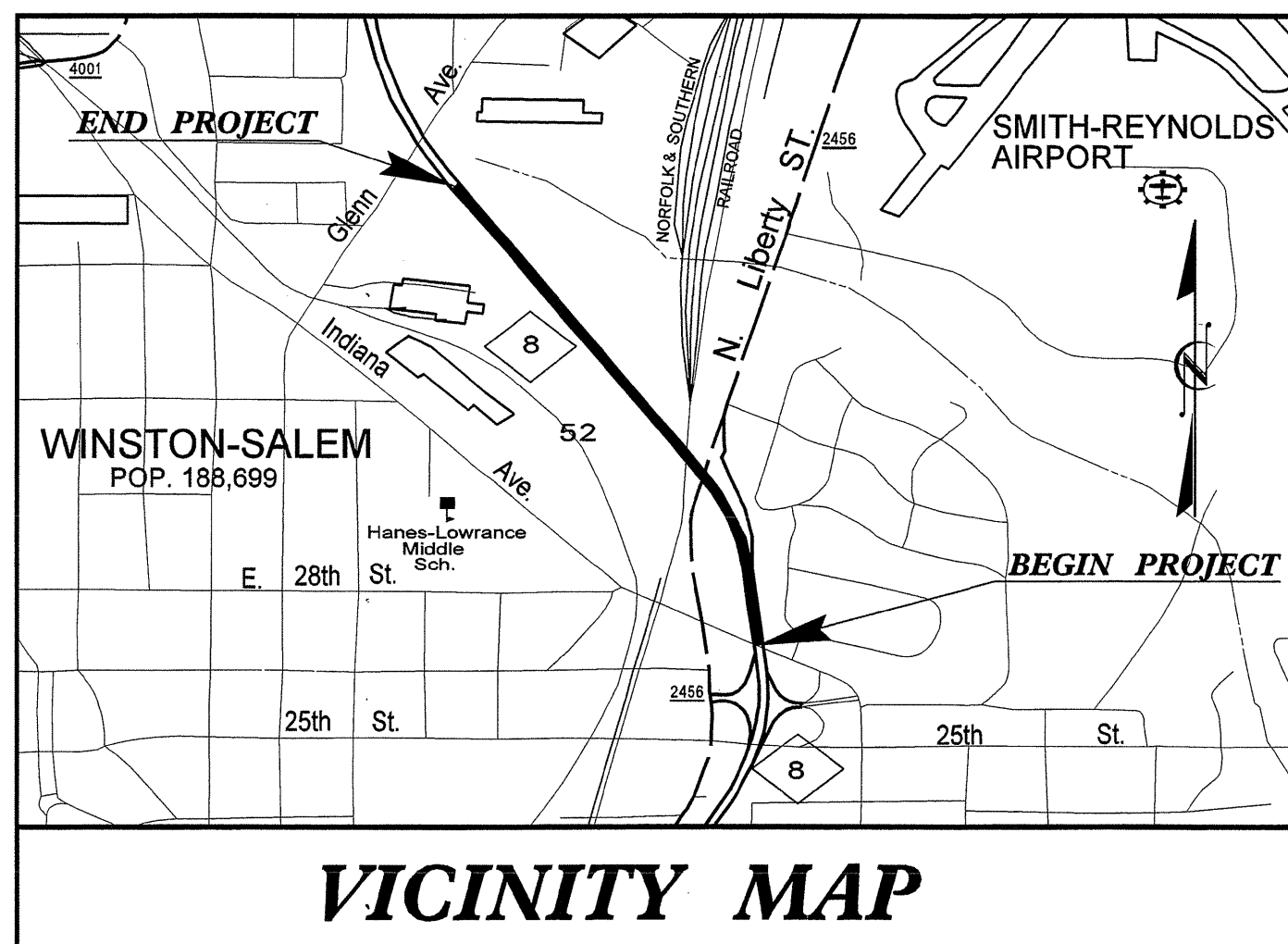


09/28/99

See Sheet 1-A For Index of Sheets  
See Sheet 1-B For Conventional Symbols

STATE OF NORTH CAROLINA  
DIVISION OF HIGHWAYS

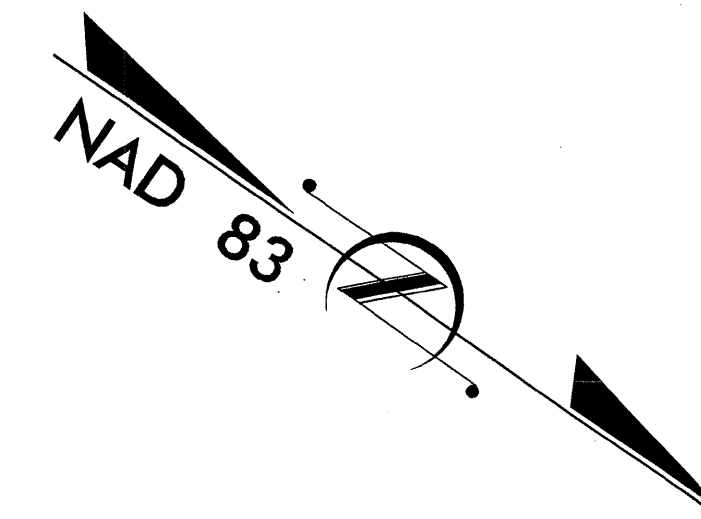
T.I.P. NO.	SHEET NO.
U-2826A	UO-1



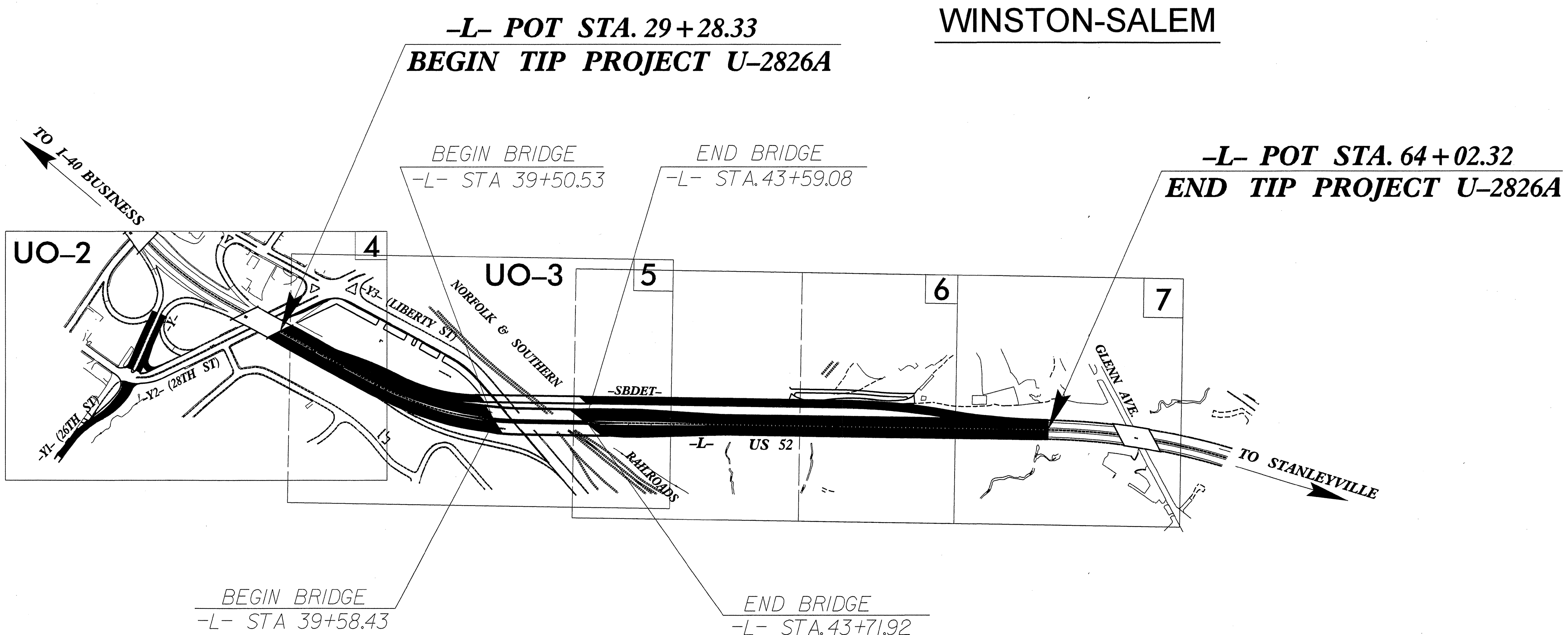
# UTILITIES BY OTHERS PLANS FORSYTH COUNTY

LOCATION: US 52 OVER THE NORFOLK SOUTHERN RAILROAD  
IN WINSTON-SALEM

TYPE OF WORK: UTILITIES BY OTHERS



TIP PROJECT: U-2826A



THIS PROJECT IS WITHIN THE MUNICIPAL BOUNDARIES OF WINSTON-SALEM

THIS IS A CONTROLLED ACCESS PROJECT WITH ACCESS BEING LIMITED TO INTERCHANGES



PREPARED IN THE OFFICE OF:  
DAVIS-MARTIN-POWELL  
AND ASSOCIATES, INC.

6415 OLD PLANK ROAD  
HIGH POINT, NC 27265  
PHONE (336) 886-4321  
FAX (336) 886-4458

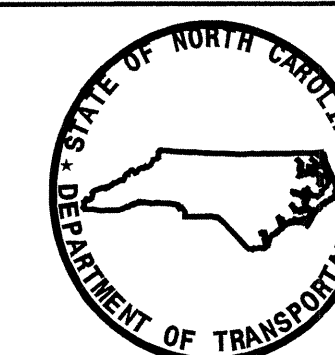
Ed Powell, P.E. UTILITIES PROJECT MANAGER  
Andy Larrick, P.E. UTILITIES PROJECT ENGINEER  
Mark Salter UTILITIES COORDINATOR

### INDEX OF SHEETS

SHEET NO.	DESCRIPTION
UO-1	TITLE SHEET
UO-2 THRU UO-3	UTILITIES BY OTHERS PLAN SHEETS

### UTILITY OWNERS ON PROJECT

- (1) DUKE ENERGY (POWER TRANSMISSION)
- (2) DUKE ENERGY (POWER DISTRIBUTION)
- (3) AT&T (TELEPHONE)
- (4) PIEDMONT NATURAL GAS (GAS)
- (5) CITY OF WINSTON-SALEM (TRAFFIC SIGNALS)
- (6) TIME WARNER CABLE (CATV)



DIVISION OF HIGHWAYS  
UTILITIES ENGINEERING SECTION

1591 MAIL SERVICES CENTER  
RALEIGH, NC 27699-1591  
PHONE (919) 250-4128  
FAX (919) 250-4119

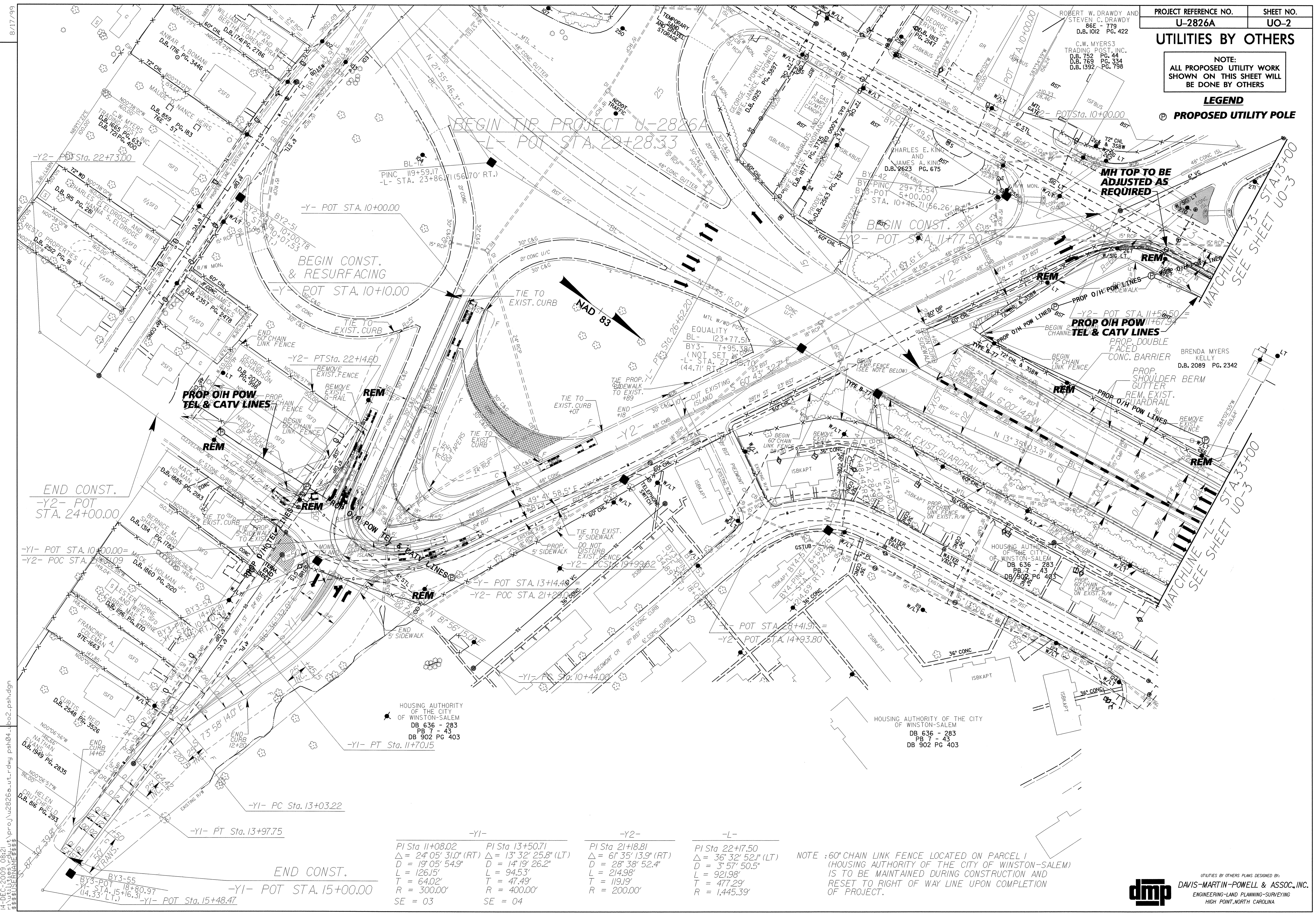
Roger Worthington, P.E. UTILITIES SECTION ENGINEER  
Ron Wilkins, P.E. UTILITIES SQUAD LEADER PROJECT ENGINEER  
John Nigro, P.E. UTILITIES PROJECT DESIGNER

\$\$\$\$\$SYTIME\$\$\$\$\$  
\$\$\$\$\$DCN\$\$\$\$\$  
\$\$\$\$\$SERNAME\$\$\$\$\$

**UTILITIES BY OTHERS**

NOTE:  
ALL PROPOSED UTILITY WORK  
SHOWN ON THIS SHEET WILL  
BE DONE BY OTHERS

**LEGEND**  
⊙ PROPOSED UTILITY POLE



REVISIONS

8/17/99  
14-DEC-2009 08:21  
C:\utilities\psh\ut\proj\2826a\ut\_r\dwy\psh04\_b02.psh.dgn  
\$\$\$\$\$USERNAME\$\$\$\$\$

-Y1-	-Y2-	-L-
PI Sta 11+08.02 Δ = 24'05" 31.0" (RT) D = 19'05" 54.9" L = 126.15' T = 64.02' R = 300.00' SE = 03	PI Sta 13+50.71 Δ = 13'32" 25.8" (LT) D = 14'19" 26.2" L = 94.53' T = 47.49' R = 400.00' SE = 04	PI Sta 21+18.81 Δ = 6'35" 13.9" (RT) D = 28'38" 52.4" L = 214.98' T = 119.19' R = 200.00'
		PI Sta 22+17.50 Δ = 36'32" 52.1" (LT) D = 3'57" 50.5" L = 921.98' T = 477.29' R = 1,445.39'

NOTE :60" CHAIN LINK FENCE LOCATED ON PARCEL 1 (HOUSING AUTHORITY OF THE CITY OF WINSTON-SALEM) IS TO BE MAINTAINED DURING CONSTRUCTION AND RESET TO RIGHT OF WAY LINE UPON COMPLETION OF PROJECT.

8/17/99

### UTILITIES BY OTHERS

NOTE:  
ALL PROPOSED UTILITY WORK  
SHOWN ON THIS SHEET WILL  
BE DONE BY OTHERS

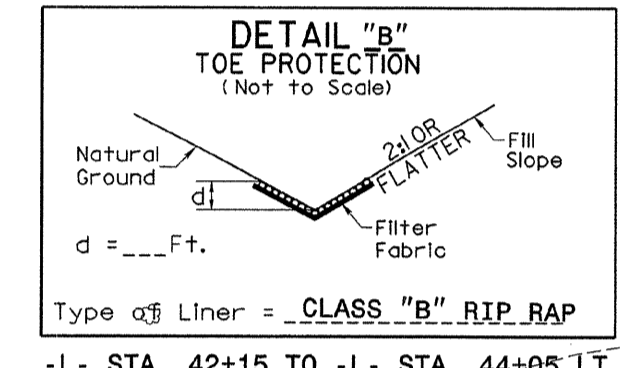
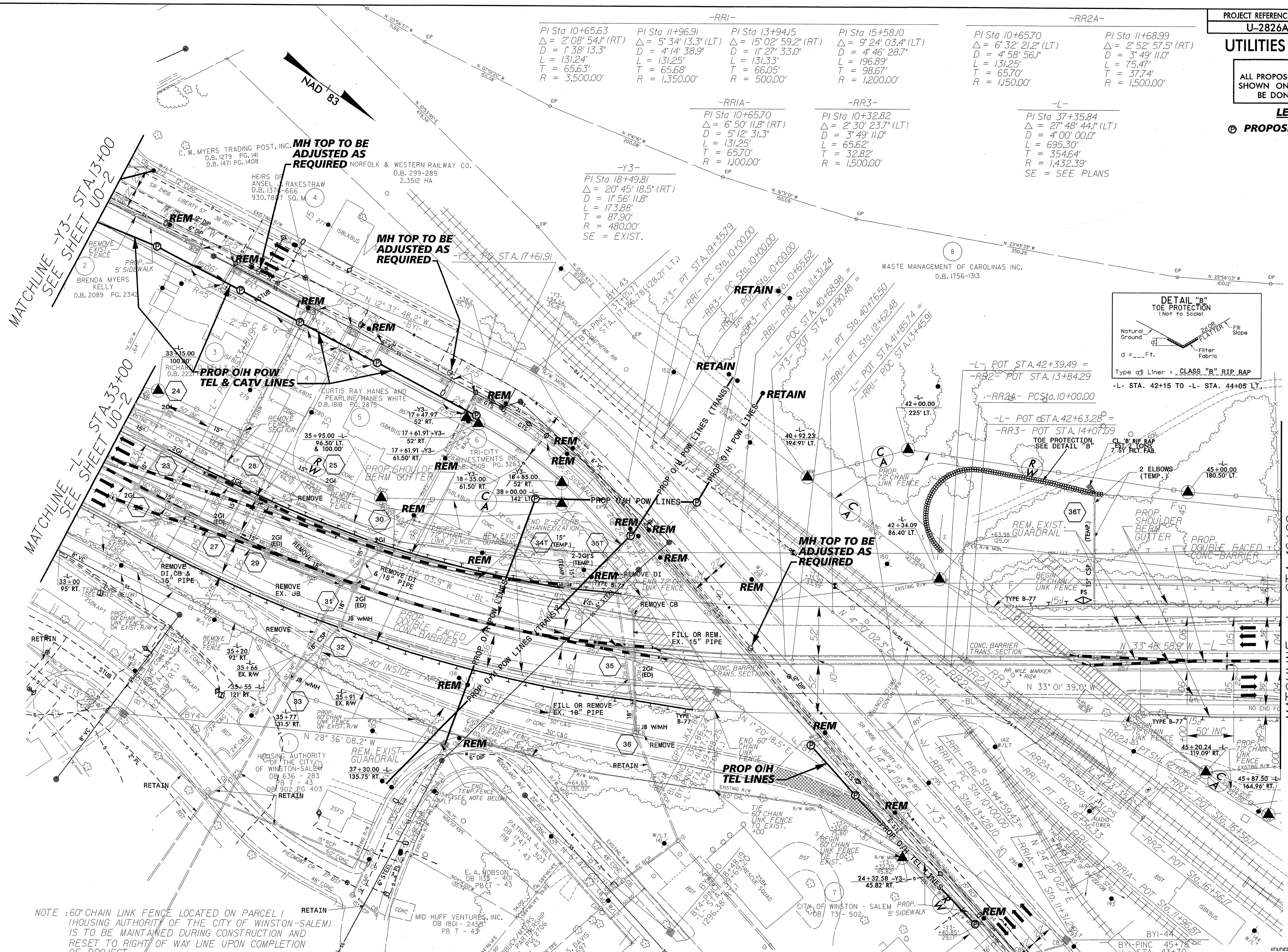
**LEGEND**  
 **PROPOSED UTILITY POLE**

-RRI- PI Sta 10+65.63 $\Delta = 2' 08" 54" (RT)$ $D = 1' 38" 13.3"$ $L = 131.24'$ $T = 65.63'$ $R = 3,500.00'$	PI Sta 11+96.91 $\Delta = 5' 34" 13.3" (LT)$ $D = 4' 14" 38.9"$ $L = 131.25'$ $T = 65.68'$ $R = 1,350.00'$	PI Sta 13+94.15 $\Delta = 15' 02" 59.2" (RT)$ $D = 11' 27" 33.0"$ $L = 131.33'$ $T = 66.05'$ $R = 500.00'$	PI Sta 15+58.10 $\Delta = 9' 24" 03.4" (LT)$ $D = 4' 46" 28.7"$ $L = 196.89'$ $T = 98.67'$ $R = 1,200.00'$	-RR2A- PI Sta 10+65.70 $\Delta = 6' 32" 21.2" (LT)$ $D = 4' 58" 56.1"$ $L = 131.25'$ $T = 65.70'$ $R = 1,150.00'$	PI Sta 11+68.99 $\Delta = 2' 52" 57.5" (RT)$ $D = 3' 49" 11.0"$ $L = 75.47'$ $T = 37.74'$ $R = 1,500.00'$
--	---	---	---	---	--

-RR1A- PI Sta 10+65.70 $\Delta = 6' 50" 11.8" (RT)$ $D = 5' 12" 31.3"$ $L = 131.25'$ $T = 65.70'$ $R = 1,100.00'$	-RR3- PI Sta 10+32.82 $\Delta = 2' 30" 23.7" (LT)$ $D = 3' 49" 11.0"$ $L = 65.62'$ $T = 32.82'$ $R = 1,500.00'$	-L- PI Sta 37+35.84 $\Delta = 27' 48" 44.1" (LT)$ $D = 4' 00" 00.0"$ $L = 695.30'$ $T = 354.64'$ $R = 1,432.39'$ SE = SEE PLANS
---	---	--

-Y3- PI Sta 18+49.81 $\Delta = 20' 45" 18.5" (RT)$ $D = 11' 56" 11.8"$ $L = 173.88'$ $T = 87.90'$ $R = 480.00'$ SE = EXIST.
--

REVISIONS



NOTE: 60" CHAIN LINK FENCE LOCATED ON PARCEL 1 (HOUSING AUTHORITY OF THE CITY OF WINSTON-SALEM) IS TO BE MAINTAINED DURING CONSTRUCTION AND RESET TO RIGHT OF WAY LINE UPON COMPLETION OF PROJECT.