

09/08/99

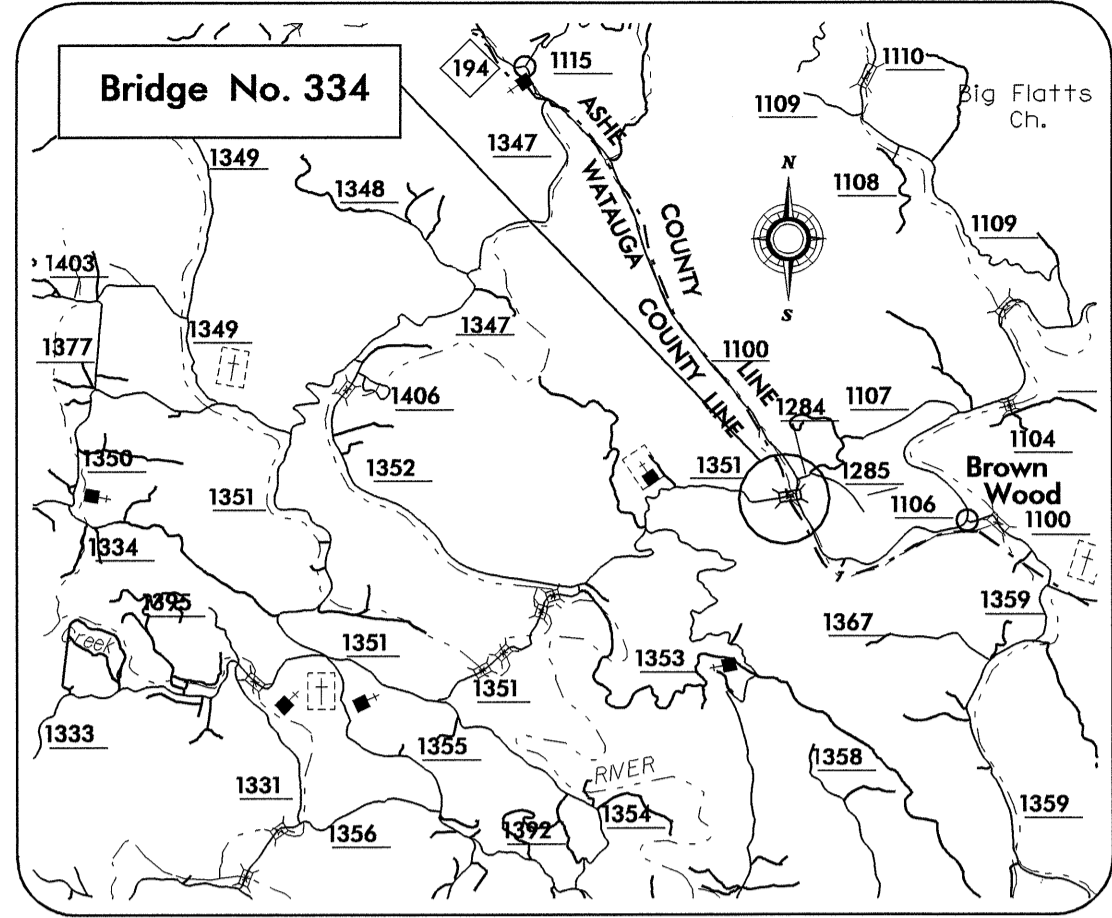
TIP PROJECT: B-3928

29-MAY-2009 10:59
F:\utilities\rdy\ut\proj\B3928_rdy_tsh.dgn
\$\$\$\$\$USERNAME\$\$\$\$\$

STATE OF NORTH CAROLINA
DIVISION OF HIGHWAYS

T.I.P. NO.	SHEET NO.
B-3928	UO-1

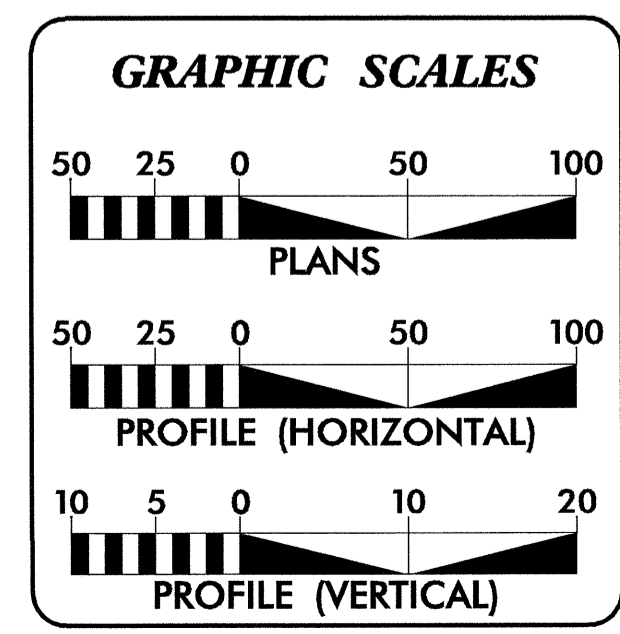
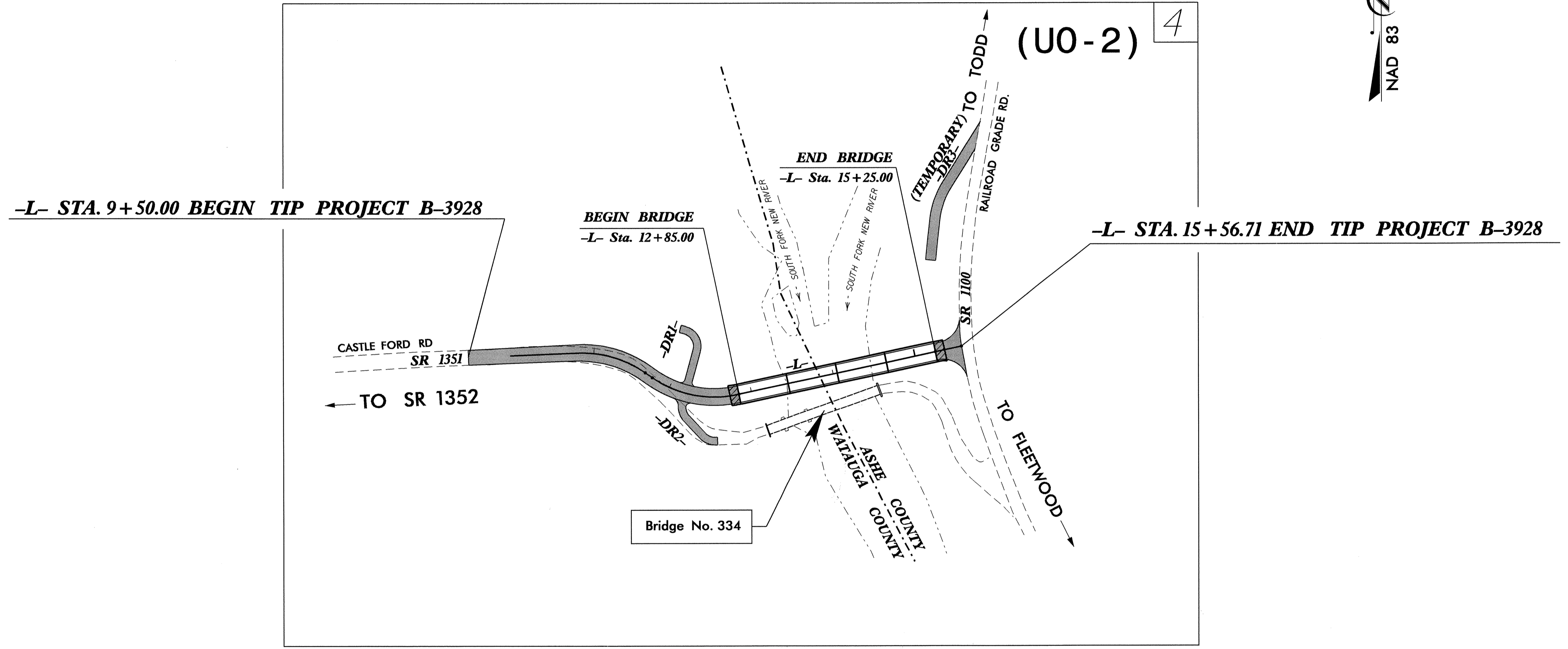
UTILITIES BY OTHERS PLANS
WATAUGA / ASHE COUNTY



VICINITY MAP

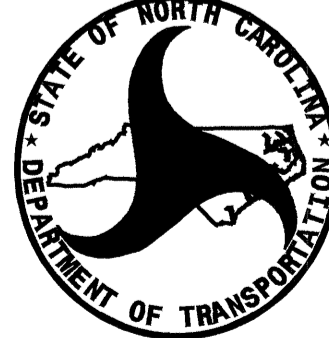
LOCATION: Bridge No. 334 over South Fork New River on SR 1351 (Castle Ford Road).

TYPE OF WORK: Utility Relocation



INDEX OF SHEETS	
SHEET NO.	DESCRIPTION
UO-1	TITLE SHEET
UO-2	UTILITY BY OTHERS PLAN SHEET

UTILITY OWNERS ON PROJECT
(1) Blue Ridge EMC - Electric Power
(2) Skyline - Telephone



PREPARED IN THE OFFICE OF:
**DIVISION OF HIGHWAYS
 UTILITIES ENGINEERING
 SECTION**

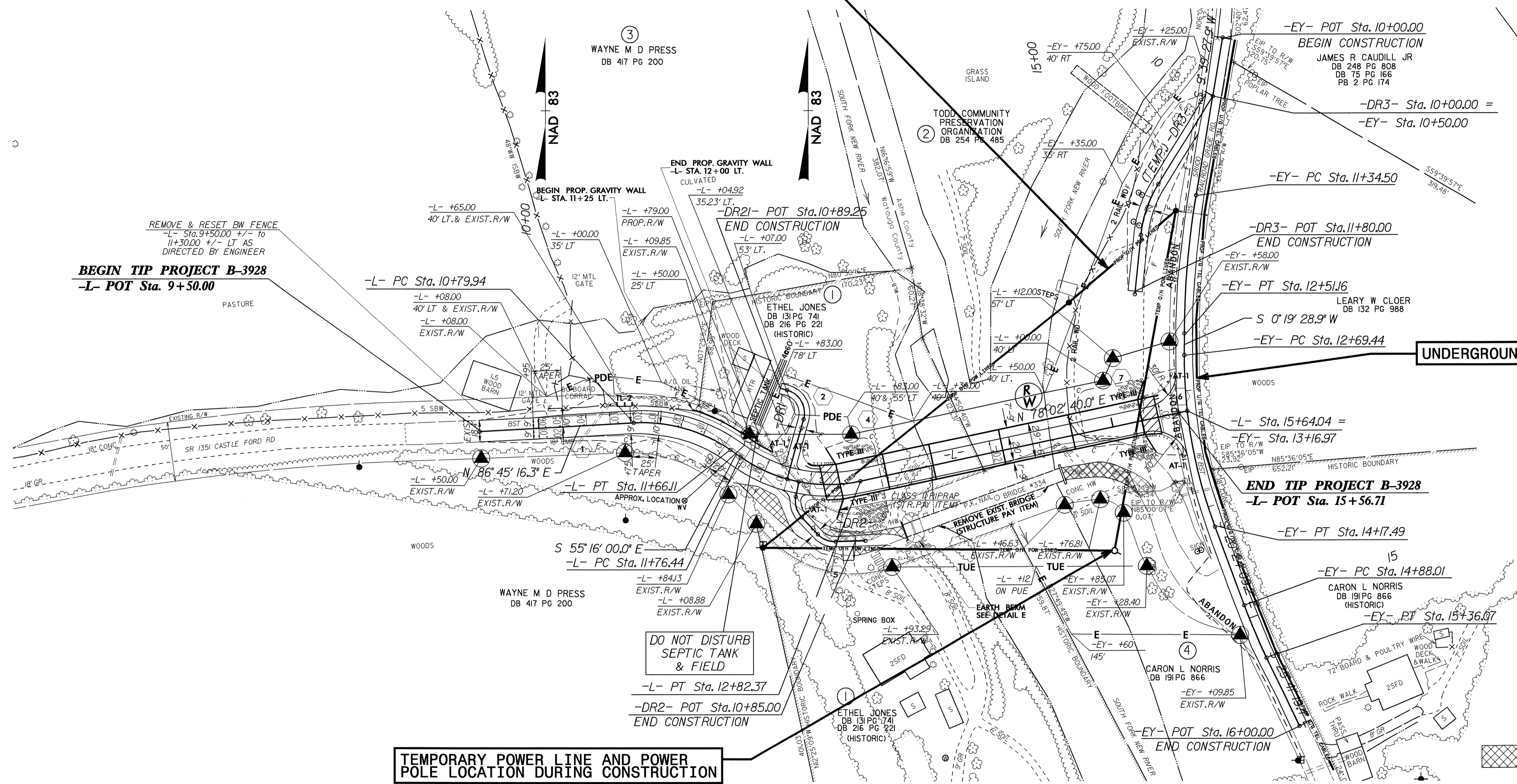
1591 MAIL SERVICES CENTER
 RALEIGH, NC 27699-1591
 PHONE (919) 250-4128
 FAX (919) 250-4119

Roger Worthington, P.E.	UTILITIES SECTION ENGINEER
Corey Bousquet, P.E.	UTILITIES SQUAD LEADER PROJECT ENGINEER
Nabil Hamdan	UTILITIES PROJECT DESIGNER

UTILITIES BY OTHERS

NOTE:
ALL PROPOSED UTILITY WORK
SHOWN ON THIS SHEET WILL
BE DONE BY OTHERS

**PERMANENT POWER LINE LOCATION
ONCE CONSTRUCTION IS COMPLETED**



BEGIN TIP PROJECT B-3928
-L- POT Sta. 9+50.00

END TIP PROJECT B-3928
-L- POT Sta. 15+56.71

**TEMPORARY POWER LINE AND POWER
POLE LOCATION DURING CONSTRUCTION**

UNDERGROUND TELEPHONE LINES

OBLITERATE

5/14/09
05-DEC-2009 16:33
b3928_ut_r.djvsh04_uo2.dgn