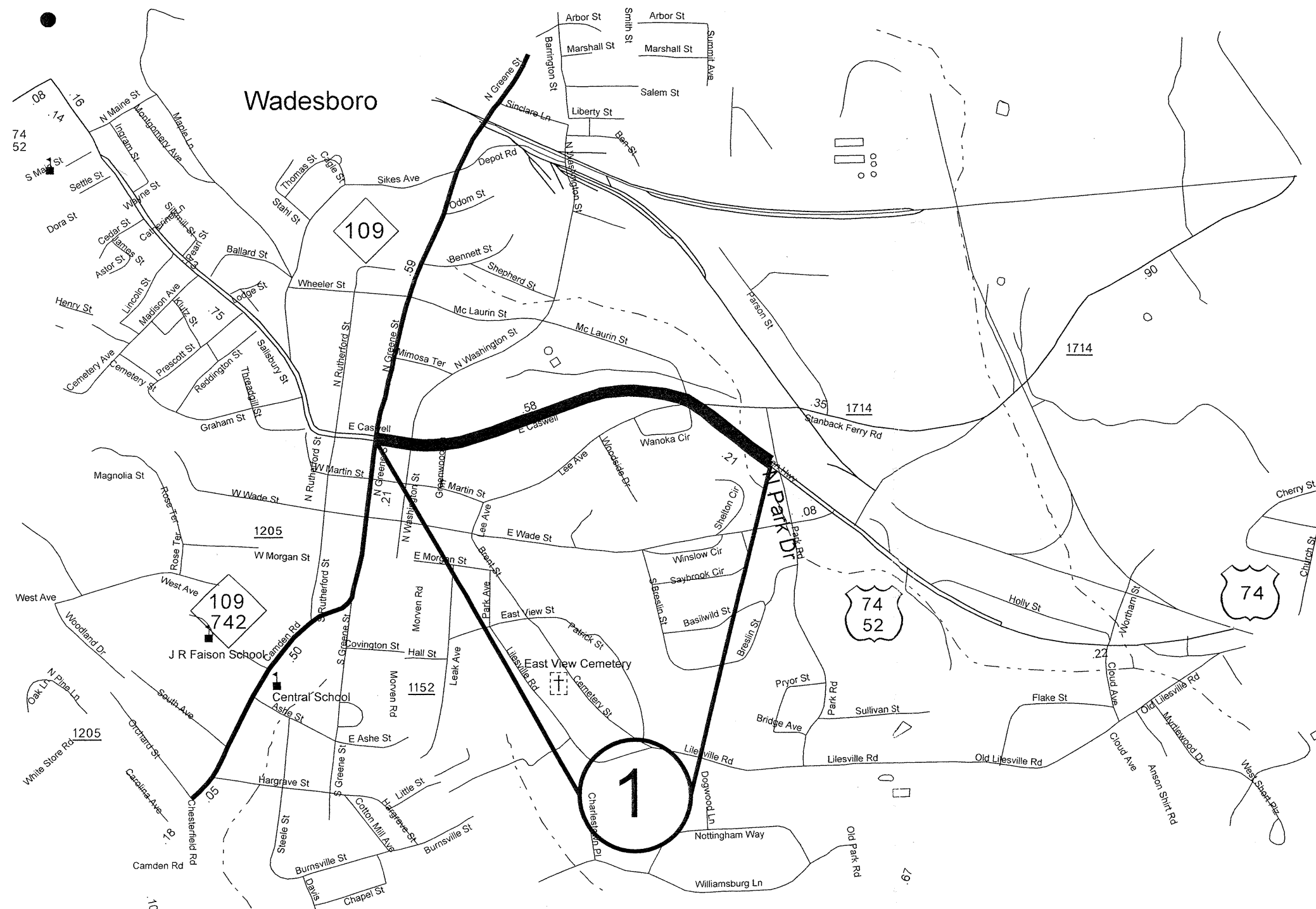
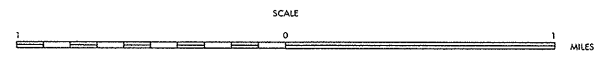


| STATE | PROJECT NO. | SHEET NO. | TOTAL SHEETS |
|------------------|-------------|-----------|--------------|
| N.C. | U-5196 | 1-3 | |
| F.A. PROJECT NO. | | | |

Wbs 45313.3.ST1

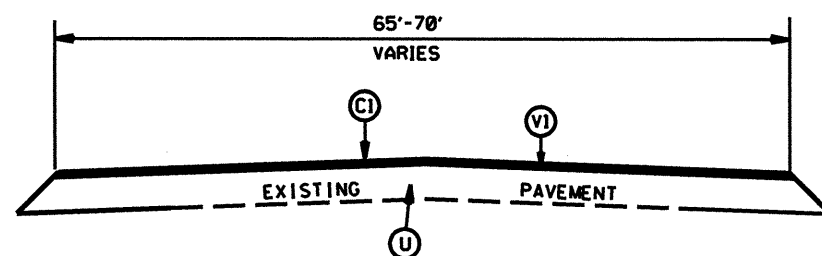


ENLARGED MUNICIPAL AND SUBURBAN AREAS
ANSON COUNTY
 NORTH CAROLINA
 PREPARED BY THE
 NORTH CAROLINA DEPARTMENT OF TRANSPORTATION
 DIVISION OF HIGHWAYS - GIS UNIT
 IN COOPERATION WITH THE
 U.S. DEPARTMENT OF TRANSPORTATION
 FEDERAL HIGHWAY ADMINISTRATION

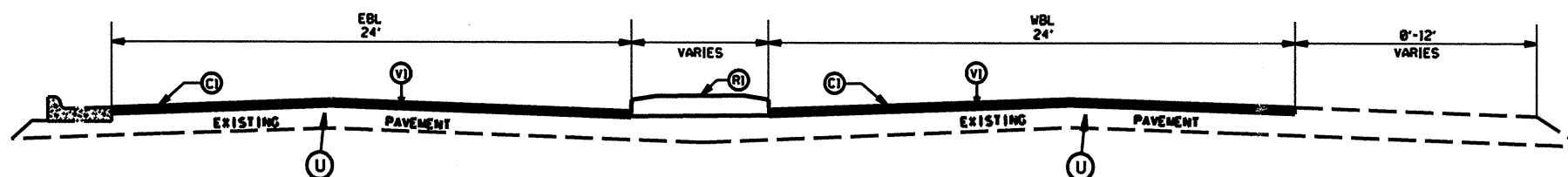
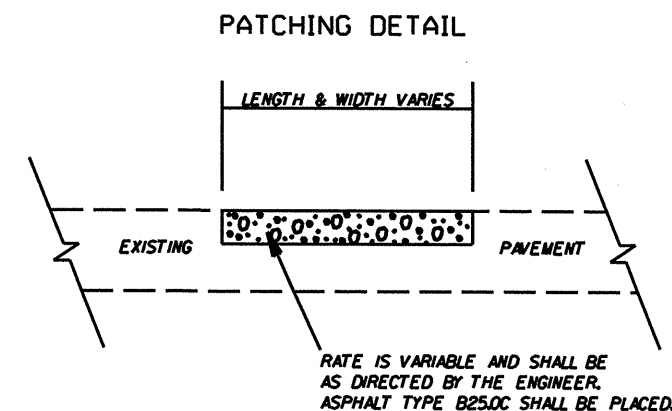


MAP #1 HWY 74 (0.74 MILES)
 FROM HWY 109 TO PVT JOINT
 APPROX. 150' WEST OF
 NORTH PARK ST.

| | | | |
|----------------|-------------|-----------|--------------|
| STATE | PROJECT NO. | SHEET NO. | TOTAL SHEETS |
| N.C. | U-5196 | 2 | |
| WBS 4533.3.5T1 | | | |

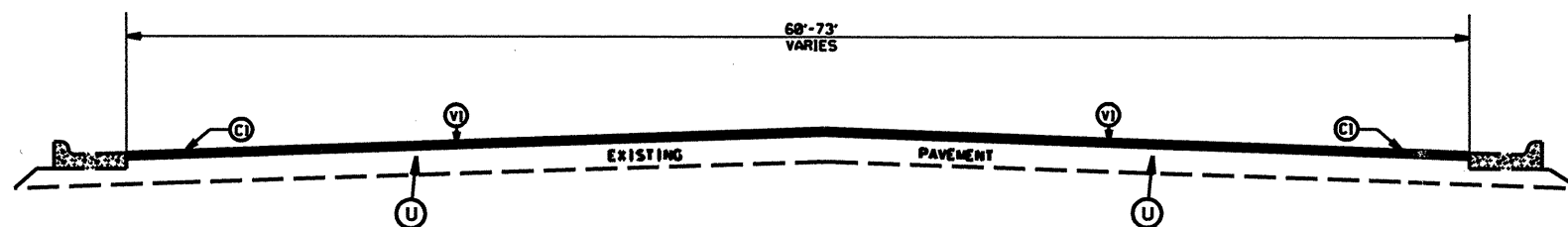


TYPICAL SECTION NO. 4
STA. 43+50 TO END -L-



TYPICAL SECTION NO. 3
RIGHT TURN LANE AT SR-1714 (STANBACK FERRY RD.)

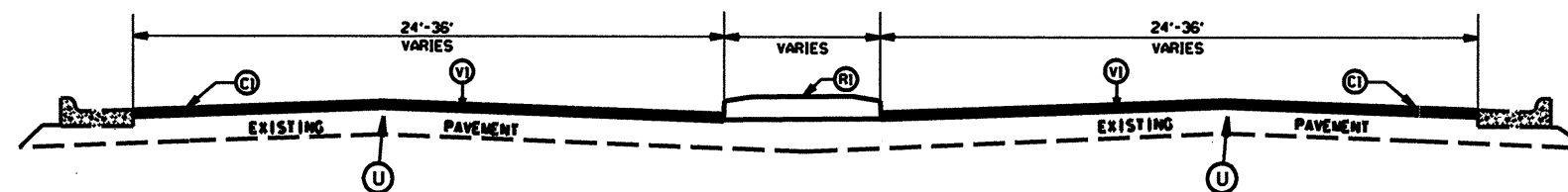
NOTES: 1: DO NOT MILL OR OVERLAY THE RIGHT TURN LANE AT SR-1714 (STANBACK FERRY RD.)



TYPICAL SECTION NO. 2
STA. 10+00 TO 14+00 -L-
STA. 16+00 TO 37+50 -L-

PAVEMENT SCHEDULE

| | |
|------|---|
| (CI) | PROP. APPROX. 1.5" ASPHALT CONC. SURFACE COURSE, TYPE S9.5C, AT AN AVERAGE RATE OF 168 LBS. PER SQ. YD. |
| (RI) | EXISTING CONCRETE ISLAND |
| (U) | EXISTING PAVEMENT |
| (VI) | MILLING EXISTING PAVEMENT, 1.5" IN DEPTH |
| | |



TYPICAL SECTION NO. 1
STA. 14+00 TO 16+00 -L-
STA. 37+50 TO 43+50 -L-

2009 ANSON COUNTY
RESURFACING

| | | | |
|-----------|------|---|-----------|
| SCALE | -NA- |  | REVISIONS |
| DATE | 8-09 | | |
| DWG. BY | JAB | | |
| DESIGN BY | JAB | | |
| APPROVED | JNU | | |

| | | |
|--------------------|-----------|-----------|
| PROJECT NO. | SHEET NO. | TOTAL NO. |
| U-5196 45313.3.ST1 | 3 | |

SUMMARY OF QUANTITIES

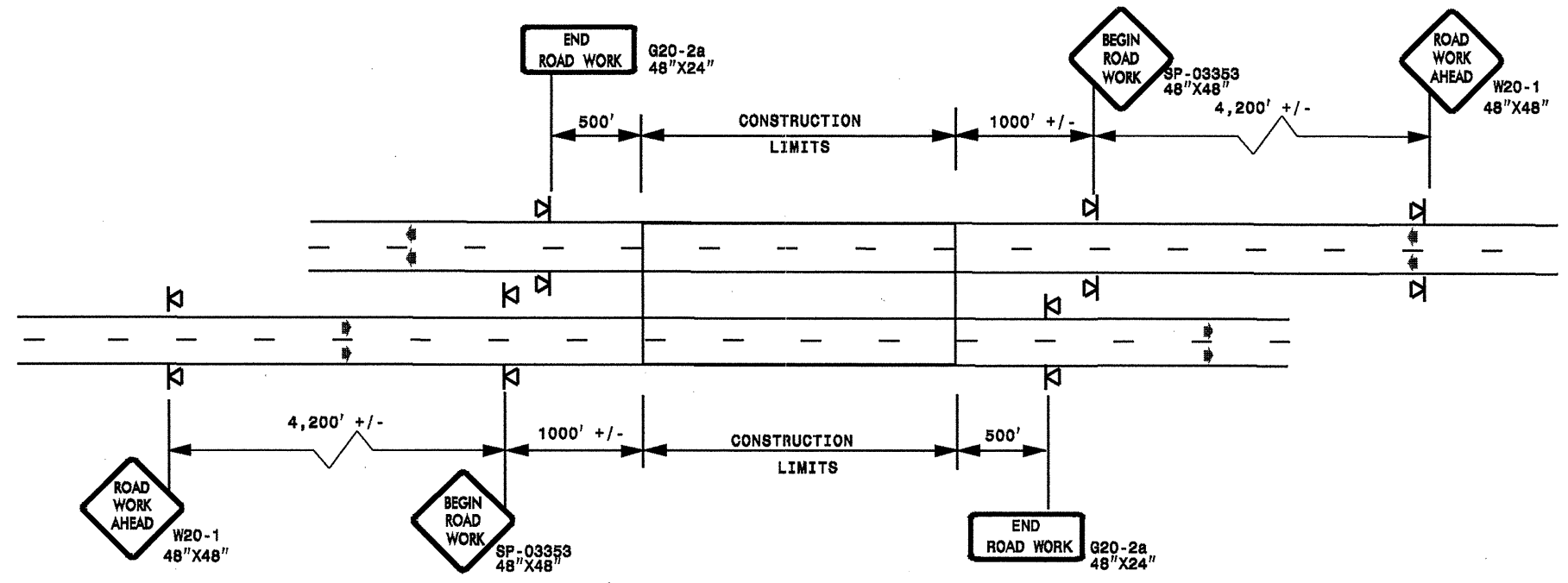
| PROJECT NO | COUNTY | MAP NO | ROUTE | DESCRIPTION | TYP | FINAL SURFACE TESTING REQUIRED | LENGTH MI | WIDTH FT | STABILIZER AGGREGATE TONS | 1 1/2" MILLING SY | SURFACE COURSE, S9.5C TONS | LEVELING COURSE, S9.5C TONS | PLANT MIX GRADE PG 70-22 TONS | PATCHING EXISTING PAVEMENT TONS |
|--------------------------------|--------|--------|-----------|---|------------|--------------------------------|-----------|----------|---------------------------|-------------------|----------------------------|-----------------------------|-------------------------------|---------------------------------|
| U-5196 45313.3.ST1 | Anson | 1 | US HWY 74 | FROM HWY 109 TO PVT JOINT APPROX. 150' WEST OF NORTH PARK ST. | 1, 2, 3, 4 | NO | 0.74 | 65 | 60 | 30893 | 2,748 | 259 | 182 | 259 |
| TOTAL FOR MAP NO. 1 | | | | | | | 0.74 | | 60 | 30893 | 2,748 | 259 | 182 | 259 |
| TOTAL FOR PROJ NO. 45313.3.ST1 | | | | | | | 0.74 | | 60 | 30893 | 2,748 | 259 | 182 | 259 |
| GRAND TOTAL | | | | | | | 0.74 | | 60 | 30893 | 2,748 | 259 | 182 | 259 |

THERMOPLASTIC AND PAINT QUANTITIES

| PROJECT NO | COUNTY | MAP NO | ROUTE | DESCRIPTION | 4589000000-N | 4686000000-E | | 4697000000-E | | 4710000000-E | 4725000000-E | | | 4810000000-E | | 4820000000-E | | 4835000000-E | 4900000000-N | 4900000000-N | |
|--------------------------------|--------|--------|-----------|---|----------------------------|----------------------------|-----------------------------|----------------------------|-----------------------------|-----------------------------|----------------|-------------------------------|-------------------------|--------------------------|-------------------|--------------------|-------------------|--------------------|--------------------|----------------------------|--------------------------|
| | | | | | GENERIC TRAFFIC CONTROL LS | 4" X 120 M WHITE THERMO LF | 4" X 120 M YELLOW THERMO LF | 8" X 120 M WHITE THERMO LF | 8" X 120 M YELLOW THERMO LF | 24" X 120 M WHITE THERMO LF | MERGE ARROW EA | THERMO STR & RT ARROW 90 M EA | THERMO LT ARROW 90 M EA | THERMO STR ARROW 90 M EA | 4" WHITE PAINT LF | 4" YELLOW PAINT LF | 8" WHITE PAINT LF | 8" YELLOW PAINT LF | 24" WHITE PAINT LF | YELLOW & YELLOW MARKERS EA | CRYSTAL & RED MARKERS EA |
| U-5196 45313.3.ST1 | Anson | 1 | US HWY 74 | FROM HWY 109 TO PVT JOINT APPROX. 150' WEST OF NORTH PARK ST. | 1 | 3,291 | 6,750 | 1,180 | 55 | 110 | 5 | 7 | 21 | 6 | 3,291 | 6,750 | 1,180 | 55 | 110 | 200 | 200 |
| TOTAL FOR MAP NO. 1 | | | | | 1 | 3,291 | 6,750 | 1,180 | 55 | 110 | 5 | 7 | 21 | 6 | 3,291 | 6,750 | 1,180 | 55 | 110 | 200 | 200 |
| TOTAL FOR PROJ NO. 45313.3.ST1 | | | | | 1 | 3,291 | 6,750 | 1,180 | 55 | 110 | 5 | 7 | 21 | 6 | 3,291 | 6,750 | 1,180 | 55 | 110 | 200 | 200 |
| GRAND TOTAL | | | | | 1 | 3,291 | 6,750 | 1,180 | 55 | 110 | 5 | 7 | 21 | 6 | 3,291 | 6,750 | 1,180 | 55 | 110 | 200 | 200 |
| | | | | | | 10,041 | | 1,235 | | | | 39 | | | 10,041 | | 1,235 | | | | 400 |

ADVANCE WORK ZONE WARNING SIGNING FOR FREEWAYS (4 LANES OR GREATER)

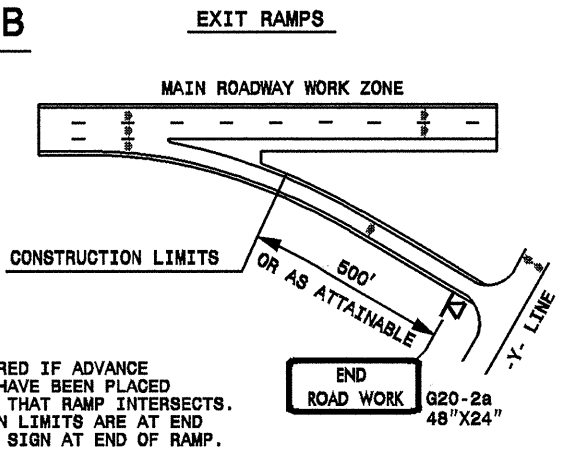
DETAIL A



STATE OF NORTH CAROLINA
DEPT. OF TRANSPORTATION
DIVISION OF HIGHWAYS
RALEIGH, N.C.

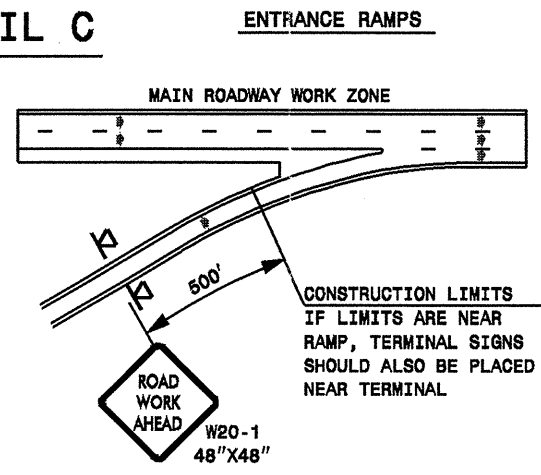
ROADWAYS INTERSECTING ALONG FREEWAY WORK ZONE (Y-LINES)

DETAIL B



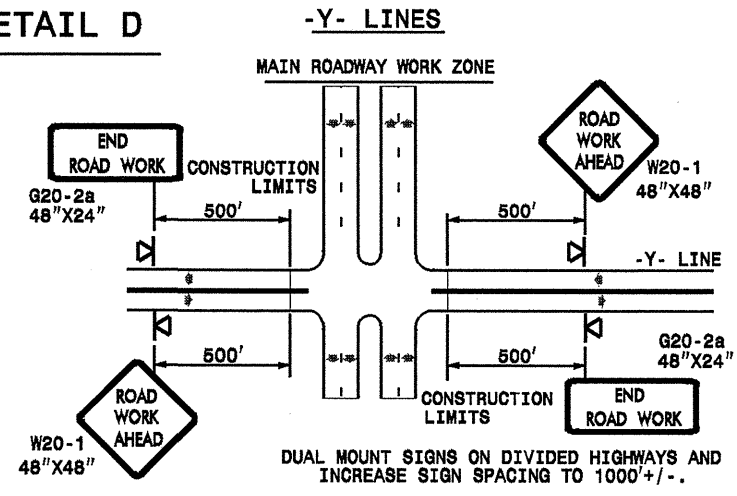
NOTE:
SIGN NOT REQUIRED IF ADVANCE WARNING SIGNS HAVE BEEN PLACED ALONG -Y- LINE THAT RAMP INTERSECTS. IF CONSTRUCTION LIMITS ARE AT END OF RAMP, PLACE SIGN AT END OF RAMP.

DETAIL C



CONSTRUCTION LIMITS IF LIMITS ARE NEAR RAMP, TERMINAL SIGNS SHOULD ALSO BE PLACED NEAR TERMINAL

DETAIL D



**DETAIL DRAWING
FOR FREEWAYS
WORK ZONE WARNING SIGNS
(SHORT-DURATION LANE CLOSURES)**

GENERAL NOTES

- USE FLUORESCENT ORANGE SHEETING (TYPE VII OR HIGHER) ON ALL ADVANCE WORK ZONE SIGNS.
- DO NOT INSTALL ADVANCE WARNING SIGNS MORE THAN 3 DAYS PRIOR TO BEGINNING OF WORK.
- ALL SIGN SPACING DIMENSIONS ARE APPROXIMATE, FIELD ADJUST AS NECESSARY OR AS DIRECTED.
- USE PORTABLE WORK ZONE SIGNS ONLY WITH PORTABLE WORK ZONE SIGN STANDS SPECIFICALLY DESIGNED FOR ONE ANOTHER. PORTABLE WORK ZONE SIGNS MAY BE ROLL UP OR APPROVED COMPOSITE.
- PROVIDE PORTABLE WORK ZONE SIGN STANDS, PORTABLE SIGNS AND SIGN SHEETING WHICH ARE LISTED ON THE NORTH CAROLINA DEPARTMENT OF TRANSPORTATION'S APPROVED PRODUCT LIST OR ACCEPTED AS TRAFFIC QUALIFIED BY THE TRAFFIC CONTROL UNIT.
- ** TWO-WAY UNDIVIDED ADVANCE WARNING SIGN CONFIGURATION MAY BE USED ON MULTI-LANE FACILITIES WHERE CONDITIONS LIMIT THE USE OF DUAL MOUNTED SIGNS AS DETERMINED BY THE ENGINEER.

LEGEND

◀ PORTABLE SIGN

➔ DIRECTION OF TRAFFIC FLOW

SHEET 1 OF 1

| | | | |
|--------------------|------------------|--|-------|
| APPROVED: _____ | DATE: _____ | DETAIL DRAWING FOR FREEWAYS WORK ZONE WARNING SIGNS | |
| SEAL | SCALE: NONE | REVISIONS | |
| | DATE: _____ | 7-98 | 10/01 |
| | DWG. BY: _____ | 10-98 | 03/04 |
| | DESIGN BY: _____ | 01/01 | 11/04 |
| REVIEWED BY: _____ | _____ | _____ | _____ |

20-NOV-2009 19:24 s:\signing\resur\facimg2010\div\0\c202524_4531331\U-5196_freelanesgreatJuly2006.por table.dgn peeymore AT WZTC237502