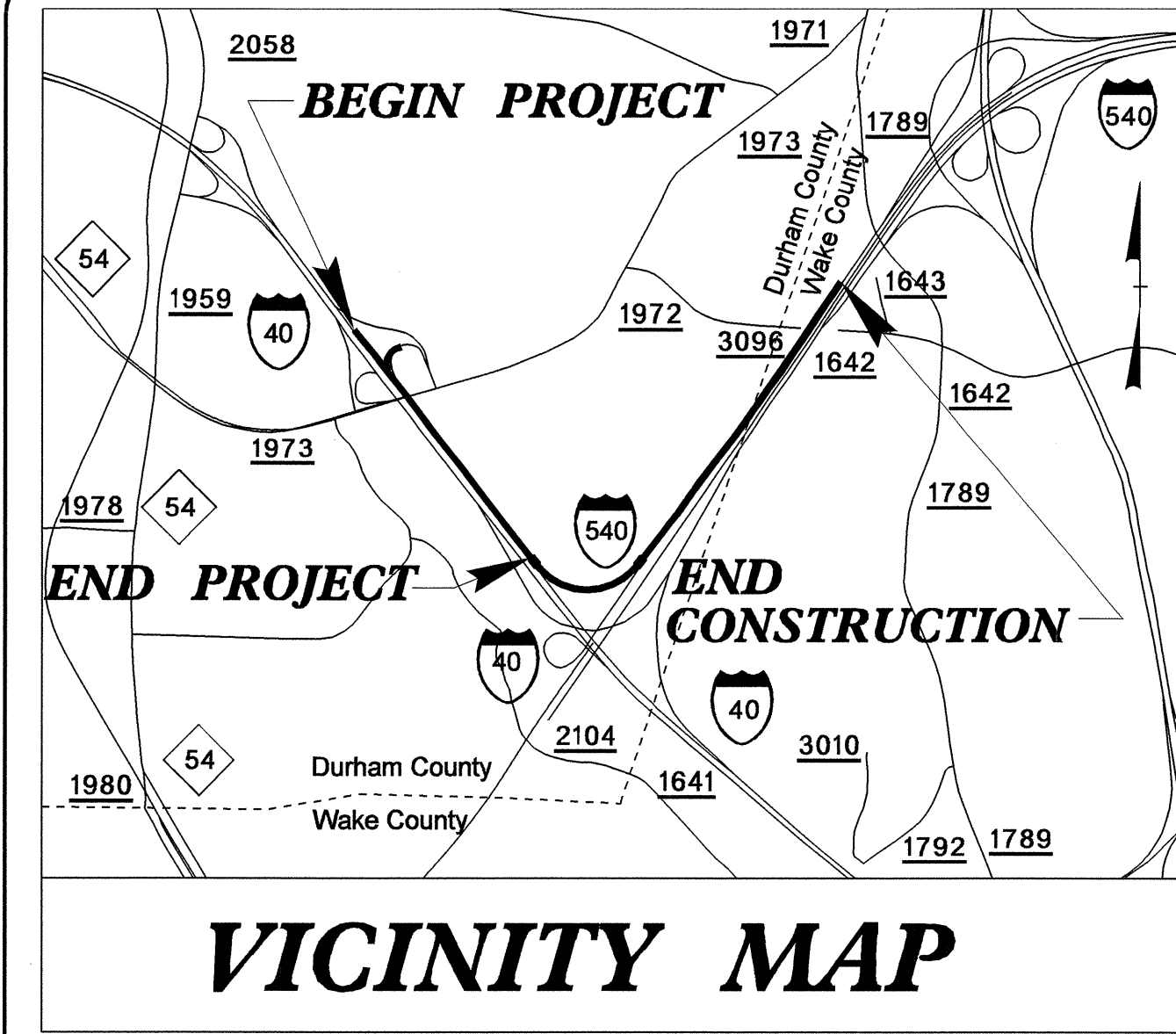


05/08/99

T.I.P. NO.	SHEET NO.
R-2000AF	UO-1

TIP PROJECT: R-2000AF



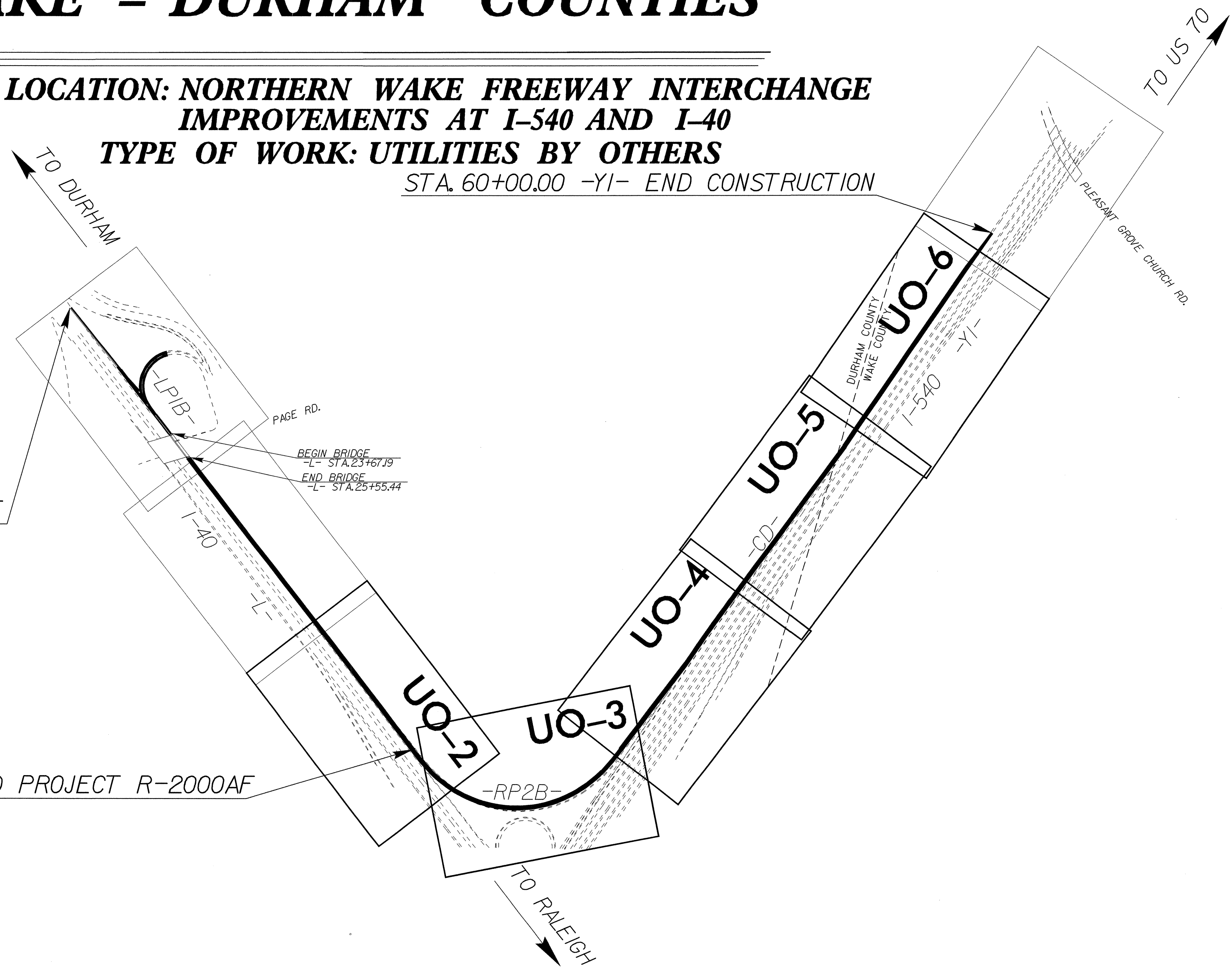
STATE OF NORTH CAROLINA
DIVISION OF HIGHWAYS

UTILITY CONSTRUCTION PLANS WAKE - DURHAM COUNTIES

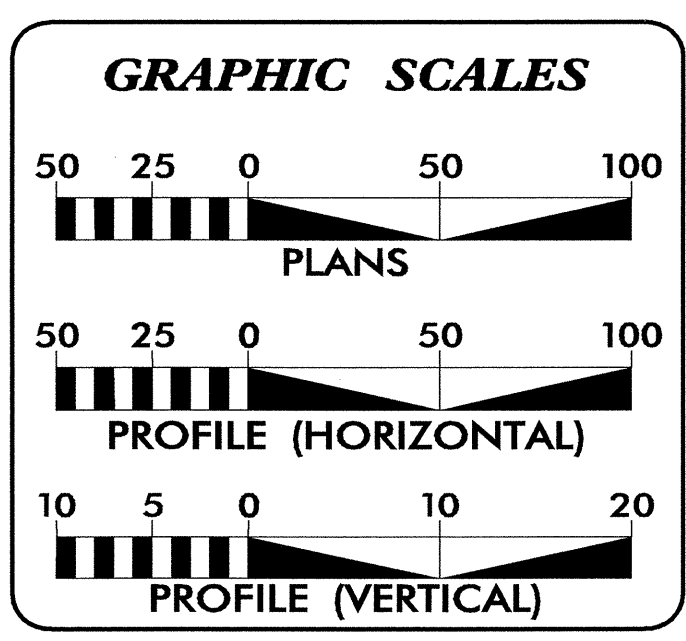
LOCATION: NORTHERN WAKE FREEWAY INTERCHANGE IMPROVEMENTS AT I-540 AND I-40
TYPE OF WORK: UTILITIES BY OTHERS
STA. 60+00.00 -YI- END CONSTRUCTION

STA. 12+50.00 -L- BEGIN TIP PROJECT R-2000AF

STA. 51+07.56 -L- END PROJECT R-2000AF



NAD 83/NSRS 2007



INDEX OF SHEETS

SHEET NO.	DESCRIPTION
UO-1	TITLE SHEET
UO-2 THRU UO-6	UTILITY BY OTHERS PLAN SHEETS

- UTILITY OWNERS ON PROJECT**
- (1) DUKE ENERGY - POWER (DISTRIBUTION)
 - (2) PROGRESS ENERGY - POWER (DISTRIBUTION)
 - (3) AT&T - TELEPHONE

PREPARED IN THE OFFICE OF:
**DIVISION OF HIGHWAYS
UTILITIES ENGINEERING SECTION**

1591 MAIL SERVICES CENTER
RALEIGH, NC 27699-1591
PHONE (919) 250-4128
FAX (919) 250-4119

Roger Worthington, P.E. UTILITIES SECTION ENGINEER
R. B. WILKINS, P.E. UTILITIES SQUAD LEADER PROJECT ENGINEER
MICHAEL R. BRIGHT UTILITIES PROJECT DESIGNER

05-AUG-2009 13:59
F:\utilities\rdy\ut\proj\vr-2000af_ut_title_uol_psh.dgn
\$\$\$\$\$USERNAME\$\$\$\$\$

5/14/99

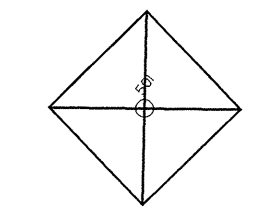
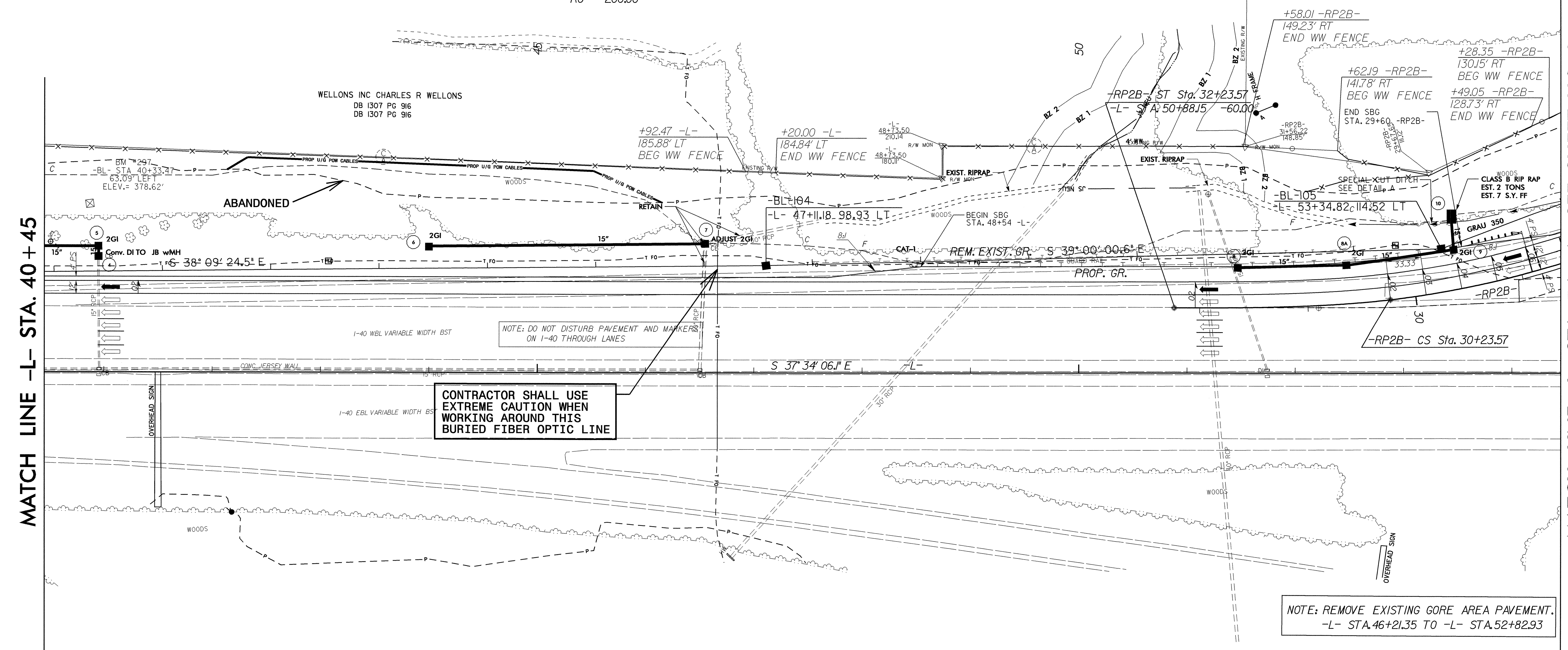
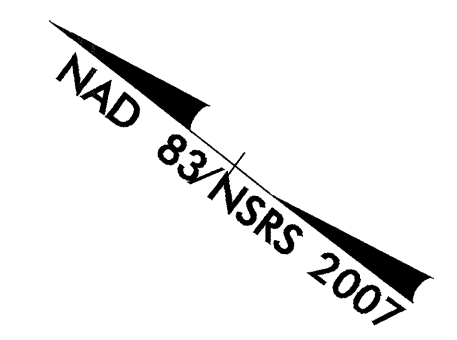
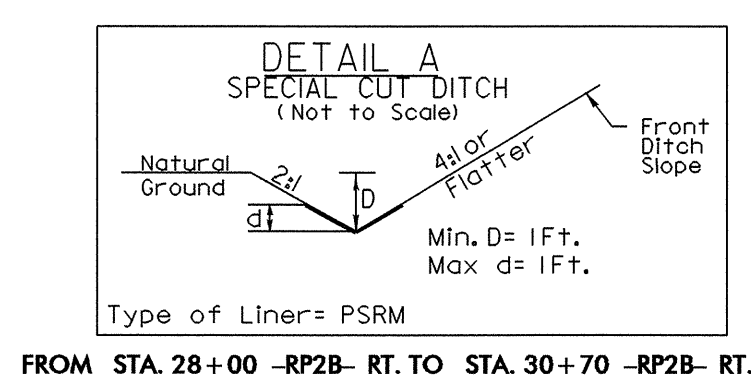
05-AUG-2009 11:45
\\p01\proj\2008\1145-2008of-ut-6-uc2.psh.dgn

UTILITIES BY OTHERS

NOTE:
ALL PROPOSED UTILITY WORK
SHOWN ON THIS SHEET WILL
BE DONE BY OTHERS

-RP2B-

PIs Sta 30+82.31	PI Sta 25+30.58
$\theta_s = 6' 44' 26.4"$	$\Delta = 9' 14' 26.9" (RT)$
$L_s = 200.00'$	$D = 6' 44' 26.4"$
$LT = 133.43'$	$L = 1,353.58'$
$ST = 66.75'$	$T = 868.6'$
$SE = 0.08$	$R = 850.00'$
	$SE = 0.08$
	$RO = 200.00'$



5/14/99

UTILITIES BY OTHERS

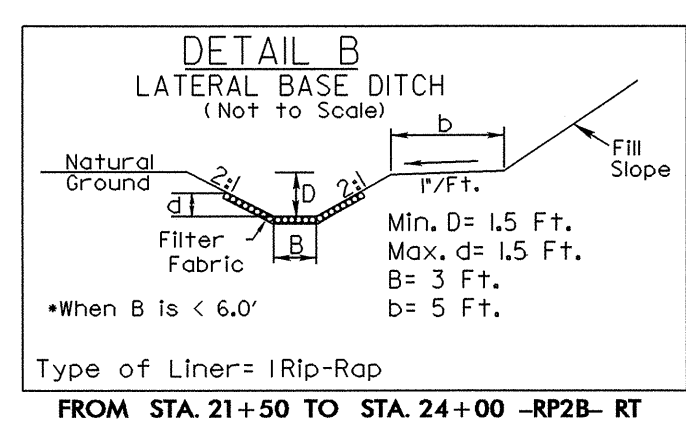
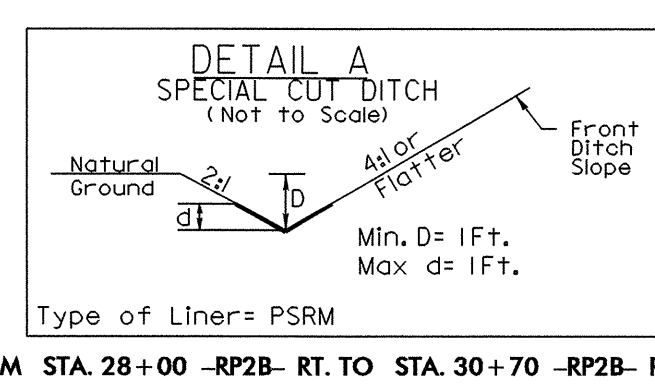
NOTE:
ALL PROPOSED UTILITY WORK
SHOWN ON THIS SHEET WILL
BE DONE BY OTHERS

NAD 83 NSRS 2007

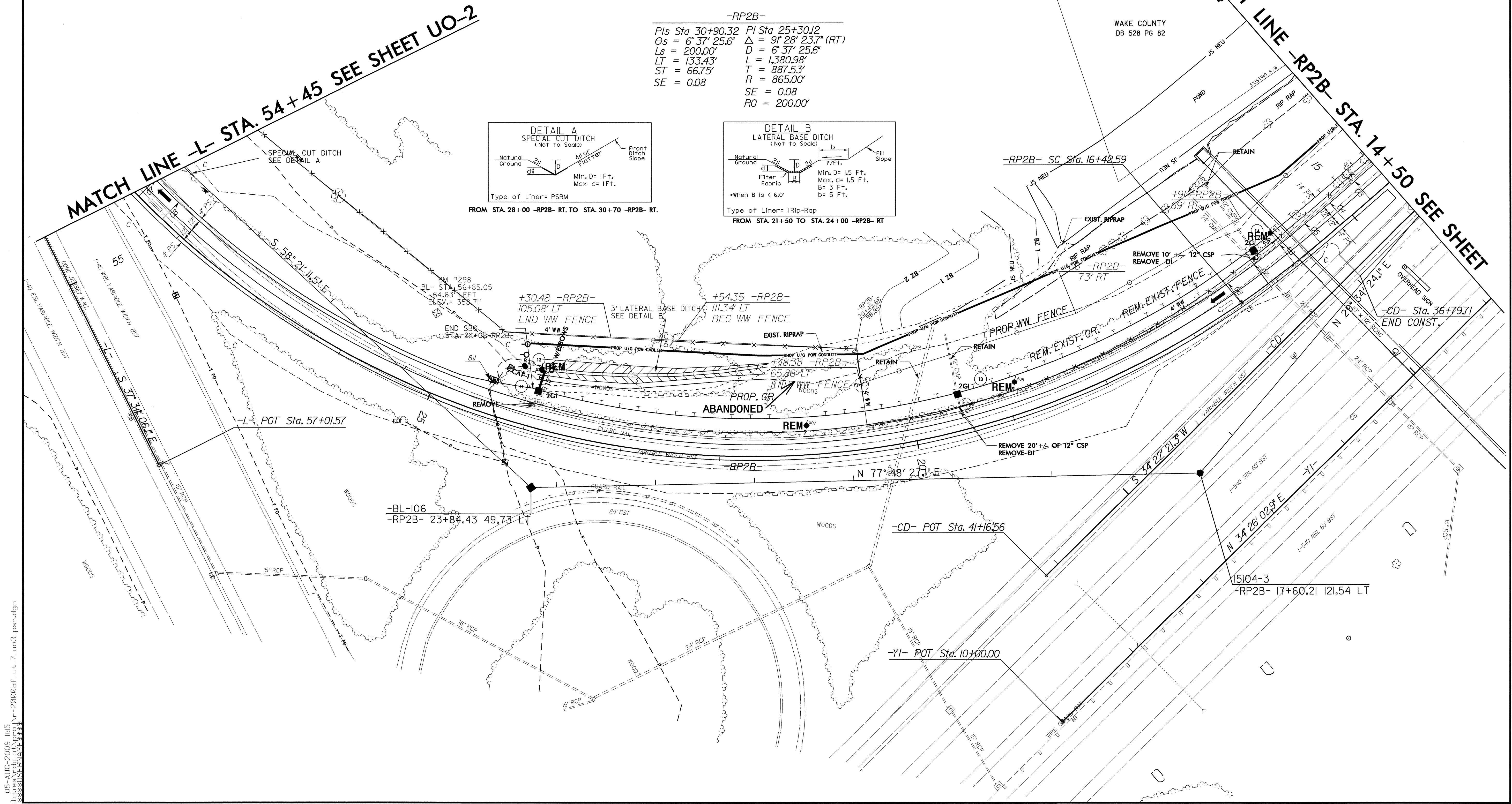
MATCH LINE -L- STA. 54+45 SEE SHEET UO-2

MATCH LINE -RP2B- STA. 14+50 SEE SHEET UO-4

-RP2B-
 PIs Sta 30+90.32 PI Sta 25+30.12
 $\Theta_s = 6^\circ 37' 25.6''$ $\Delta = 9^\circ 28' 23.7''$ (RT)
 $L_s = 200.00'$ $D = 6^\circ 37' 25.6''$
 $LT = 133.43'$ $L = 1,380.98'$
 $ST = 66.75'$ $T = 887.53'$
 $SE = 0.08$ $R = 865.00'$
 $RO = 200.00'$



WAKE COUNTY
DB 528 PG 82



05-AUG-2009 11:45
 \r-2000af_ut.7_uc3.psh.dgn

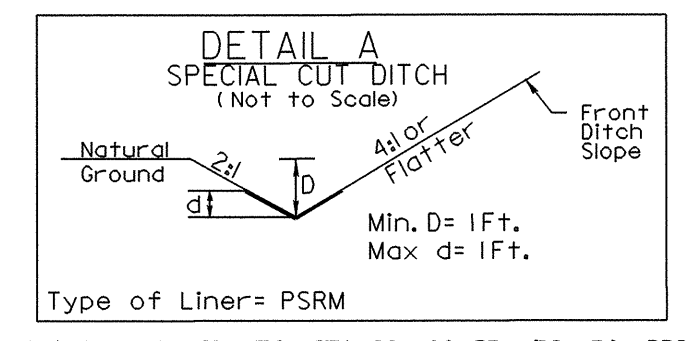
UTILITIES BY OTHERS

NOTE:
ALL PROPOSED UTILITY WORK
SHOWN ON THIS SHEET WILL
BE DONE BY OTHERS

-RP2B-
 Pls Sta 15+76.01 Pl Sta 25+30.12
 Os = 6° 37' 25.6" Δ = 9° 28' 23.7" (RT)
 Ls = 200.00' D = 6° 37' 25.6"
 LT = 133.43' L = 1,380.98'
 ST = 66.75' T = 887.53'
 SE = 0.08 R = 865.00'
 SE = 0.08
 RO = 200.00'

-CD-
 Pl Sta 25+41.52
 Δ = 2° 06' 29.0" (LT)
 D = 0° 24' 33.3"
 L = 515.10'
 T = 257.58'
 R = 14,000.00'
 SE = NC

WAKE COUNTY
DB 528 PG 82

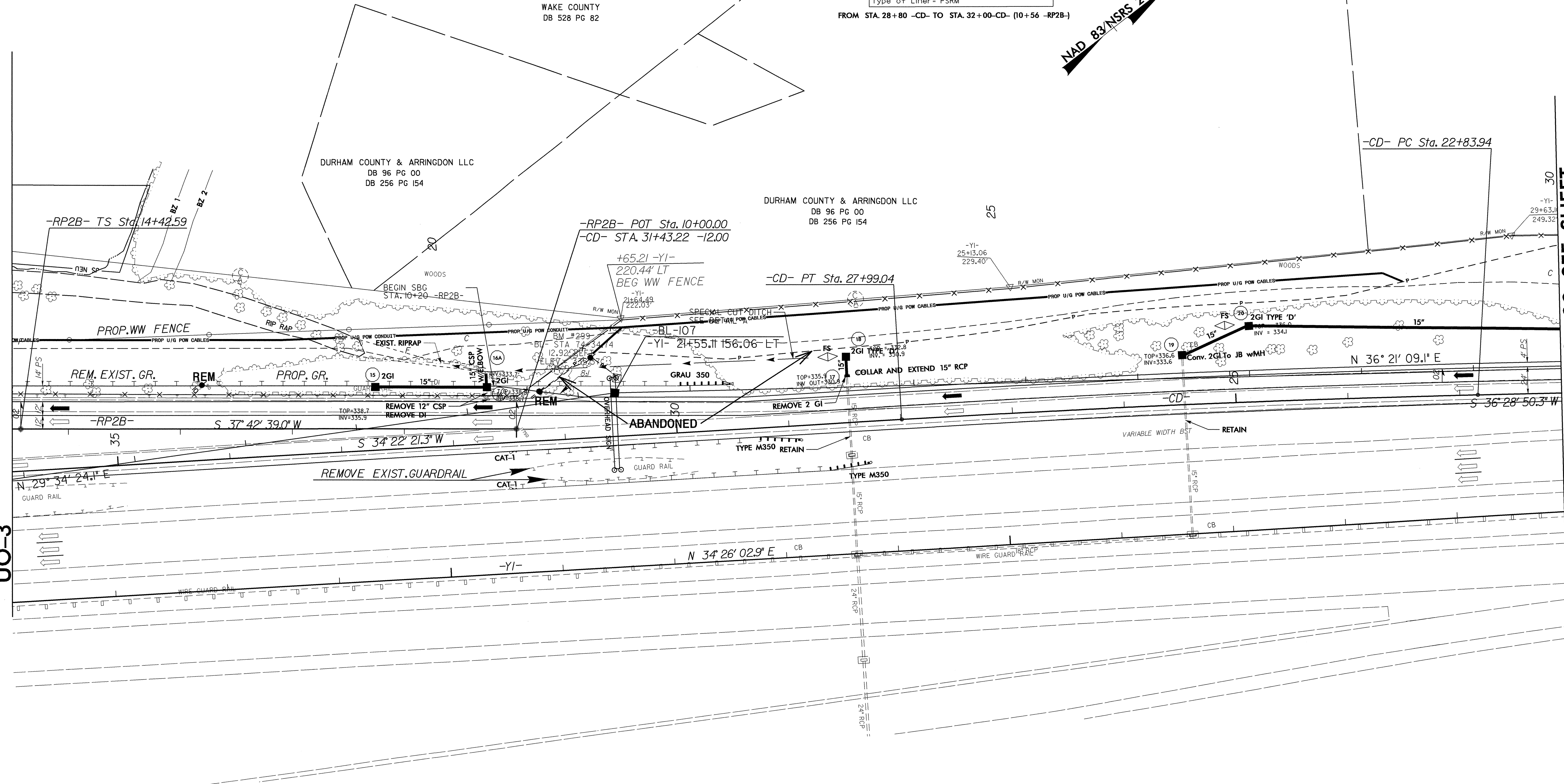


FROM STA. 28+80 -CD- TO STA. 32+00-CD- (10+56 -RP2B-)

NAD 83 MSRS 2007

MATCH LINE -RP2B- STA. 14+50 SEE SHEET UO-3

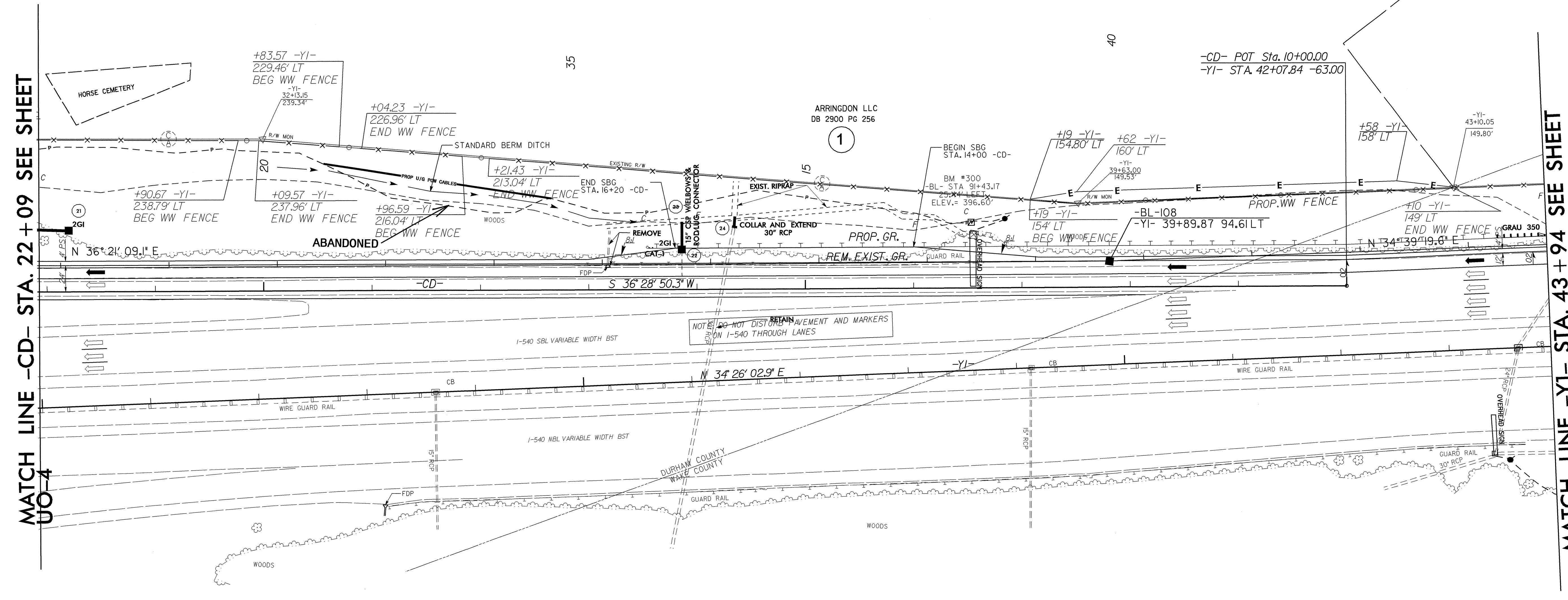
MATCH LINE -CD- STA. 22+09 SEE SHEET UO-5



5/14/99

UTILITIES BY OTHERS

NOTE:
ALL PROPOSED UTILITY WORK
SHOWN ON THIS SHEET WILL
BE DONE BY OTHERS



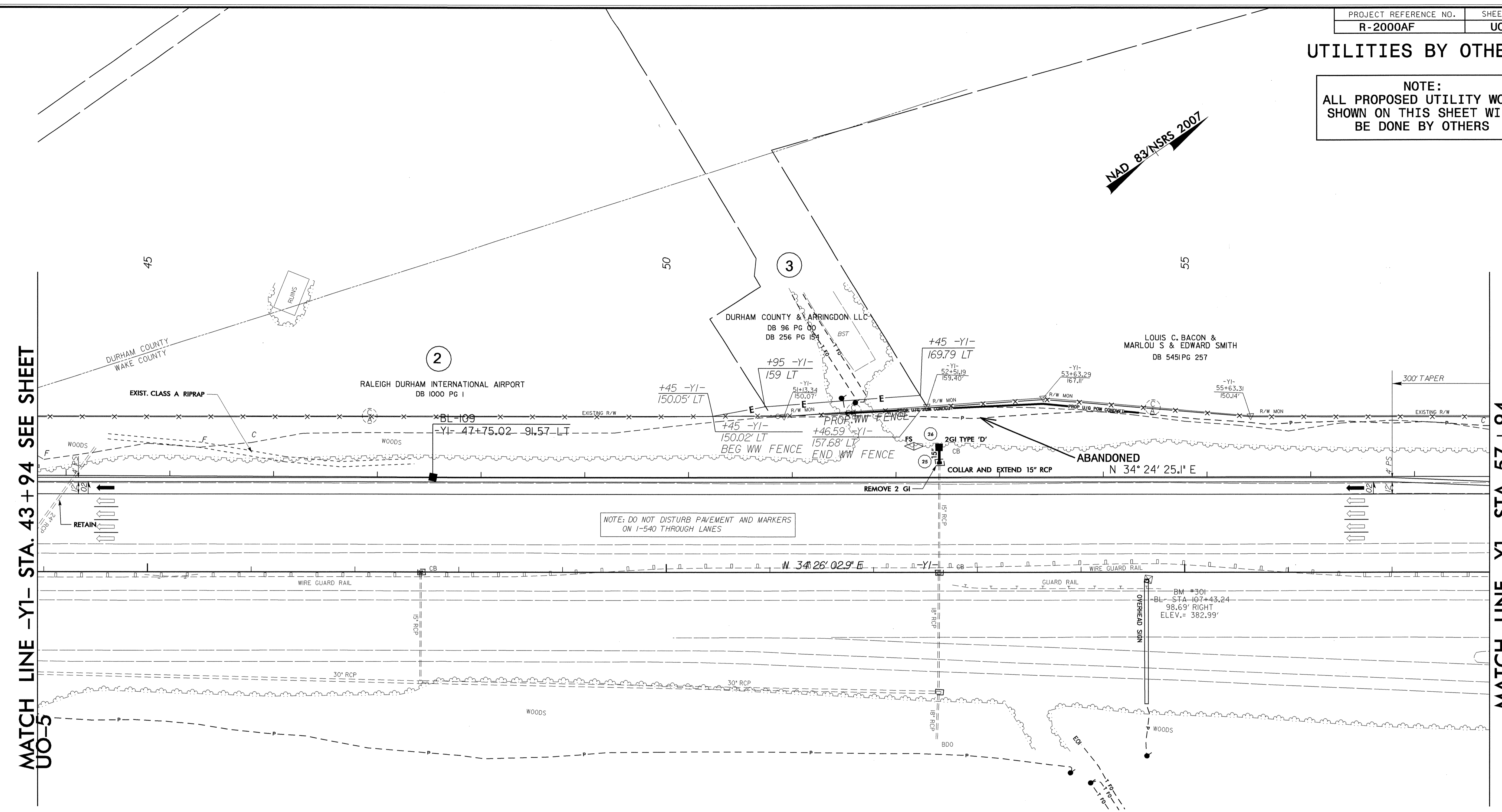
05-AUG-2009 11:16
r:\ut\1195\1195-2000af_ut_9_uo5_psh.dgn

5/14/99

PROJECT REFERENCE NO. R-2000AF	SHEET NO. UO-6
-----------------------------------	-------------------

UTILITIES BY OTHERS

NOTE:
ALL PROPOSED UTILITY WORK
SHOWN ON THIS SHEET WILL
BE DONE BY OTHERS



NAD 83/NSRS 2007

MATCH LINE -Y1- STA. 43+94 SEE SHEET UO-5

MATCH LINE -Y1- STA. 57+94