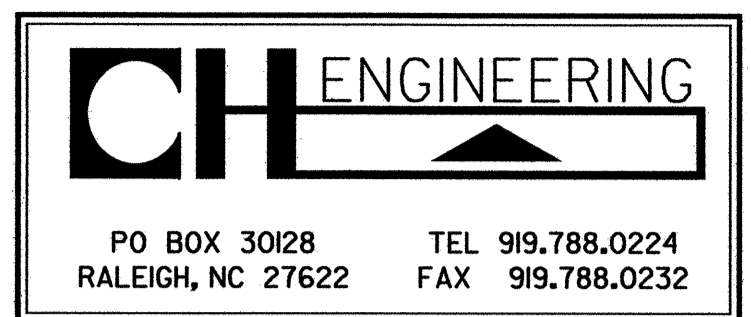


STATE OF NORTH CAROLINA
DIVISION OF HIGHWAYS

**PLAN FOR PROPOSED
TRAFFIC CONTROL**

ORANGE COUNTY

| | |
|---|--------------------|
| STATE PROJECT REFERENCE NO. U-3100B | SHEET NO. TCP-1 |
|---|--------------------|



U-3100B

ROADWAY STANDARD DRAWINGS

THE FOLLOWING ROADWAY STANDARDS AS APPEAR IN "ROADWAY STANDARD DRAWINGS"-PROJECT SERVICES UNIT-N.C. DEPARTMENT OF TRANSPORTATION-RALEIGH, N.C., DATED JULY 2006 ARE APPLICABLE TO THIS PROJECT AND BY REFERENCE HEREBY ARE CONSIDERED A PART OF THESE PLANS:

| STD. NO. | TITLE |
|----------|---|
| 1101.02 | TEMPORARY LANE CLOSURES |
| 1101.04 | TEMPORARY SHOULDER CLOSURES |
| 1101.11 | TRAFFIC CONTROL DESIGN TABLES |
| 1110.01 | STATIONARY WORK ZONE SIGNS |
| 1110.02 | PORTABLE WORK ZONE SIGNS |
| 1115.01 | FLASHING ARROW PANELS |
| 1130.01 | DRUM |
| 1135.01 | CONES |
| 1150.01 | FLAGGING DEVICES |
| 1165.01 | TRUCK MOUNTED IMPACT ATTENUATOR |
| 1180.01 | SKINNY DRUM |
| 1205.01 | PAVEMENT MARKINGS - LINE TYPES & OFFSETS |
| 1205.02 | PAVEMENT MARKINGS - 2 LANE & MULTILANE ROADWAYS |
| 1205.04 | PAVEMENT MARKINGS - INTERSECTIONS |
| 1205.05 | PAVEMENT MARKINGS - TURN LANES |
| 1205.07 | PAVEMENT MARKINGS - PEDESTRIAN CROSSWALKS |
| 1205.08 | PAVEMENT MARKINGS - SYMBOLS AND WORD MESSAGES |
| 1205.09 | PAVEMENT MARKINGS - PAINTED ISLANDS |
| 1205.10 | PAVEMENT MARKINGS - SCHOOL AREAS |

INDEX OF SHEETS

| SHEET NO. | TITLE |
|--------------|--|
| TCP-1 | LIST OF APPLICABLE ROADWAY STANDARD DRAWINGS, LEGEND AND INDEX OF SHEETS |
| TCP-1A | TEMPORARY PAVEMENT MARKING SCHEDULE |
| TCP-2 | PROJECT NOTES AND PHASING |
| TCP-3 THRU 4 | PHASE I |
| TCP-5 | DETAIL DRAWING FOR TWO-WAY UNDIVIDED & URBAN FREEWAYS ADVANCED WORK ZONE WARNING SIGNS |

LEGEND

- GENERAL**
- DIRECTION OF TRAFFIC FLOW
 - NORTH ARROW
 - PROPOSED PVMT. EXIST. PVMT.
 - WORK AREA
 - REMOVAL OF EXISTING PAVEMENT
- TRAFFIC CONTROL DEVICES**
- TYPE I BARRICADE
 - TYPE II BARRICADE
 - TYPE III BARRICADE
 - CONE
 - DRUM SKINNY DRUM
 - FLASHING ARROW PANEL (TYPE C)
 - STATIONARY SIGN
 - PORTABLE SIGN
 - STATIONARY OR PORTABLE SIGN
 - CRASH CUSHION
 - CHANGEABLE MESSAGE SIGN
 - TRUCK MOUNTED IMPACT ATTENUATOR (TMIA)
 - POLICE
 - FLAGGER
- PAVEMENT MARKINGS**
- CRYSTAL/CRYSTAL PAVEMENT MARKER
 - YELLOW/YELLOW PAVEMENT MARKER
 - CRYSTAL/RED PAVEMENT MARKER
 - PAVEMENT MARKING SYMBOLS

TIP PROJECT:

7/9/2009 1:59:01 PM \\U3100b\TrafficControl\TCP\U3100b-fc-TCP01.dgn USERNAME:

| | | |
|--|---|---|
| PLAN REVIEWED BY: N.C.D.O.T. WORK ZONE TRAFFIC CONTROL UNIT | APPROVED: <i>[Signature]</i> DATE: July 10, 2009 | PLAN PREPARED FOR NCDOT BY: |
| <u>J. S. Bourne, PE</u> TRAFFIC CONTROL ENGINEER | SEAL | <u>T. R. Hepler, PE</u> QC ENGINEER |
| <u>J. Ishak, PE</u> TRAFFIC CONTROL PROJECT ENGINEER | | <u>R. B. Early, PE</u> PROJECT ENGINEER |
| <u>J. P. Portanova, PE</u> TRAFFIC CONTROL PROJ. DESIGN ENGINEER | | <u>J. A. Phillips</u> PROJECT DESIGNER |
| TRAFFIC CONTROL DESIGN ENGINEER | | |

TEMPORARY PAVEMENT MARKING SCHEDULE

| SYMBOL | DESCRIPTION | PAY ITEM/ QUANTITY BREAKDOWN | TOTAL QUANTITY |
|--|--------------------------------|------------------------------------|-------------------|
| PAVEMENT MARKING LINES PAINT (4") | | | |
| PA | WHITE EDGELINE (2X) | 12366 LF | |
| PB | YELLOW EDGELINE (1X) | 722 LF | |
| PC | 10 FT WHITE SKIP (2X) | 681 LF | |
| PD | 2 FT WHITE MINISKIP (2X) | 326 LF | |
| PE | WHITE SOLID LANE LINE (2X) | 1934 LF | |
| PI | YELLOW DOUBLE CENTER LINE (2X) | 12436 LF | |
| | | | 28465 LF |
| PAINT (8") | | | |
| PR | WHITE GORE LINE (2X) | 1168 LF | |
| PS | WHITE DIAGONAL (2X) | 200 LF | |
| PV | YELLOW DIAGONAL (2X) | 120 LF | |
| | | | 1488 LF |
| PAINT (24") | | | |
| P4 | WHITE STOPBAR (2X) | 384 LF | |
| P5 | WHITE CROSSWALK BAR (2X) | 656 LF | |
| | | | 1040 LF |
| PAINT MARKING SYMBOLS | | | |
| QA | LEFT TURN ARROW (2X) | 36 EA | |
| QB | RIGHT TURN ARROW (2X) | 4 EA | |
| QC | STRAIGHT ARROW (2X) | 68 EA | |
| QE | STRAIGHT / RIGHT COMBO (2X) | 20 EA | |
| QJ | BICYCLE LANE (2X) | 22 EA | |
| | | | 150 EA |
| PAINT MARKING CHARACTERS | | | |
| Q1 | ALPHANUMERIC CHAR. (2X) | 12 EA | |
| | | | 12 EA |

NOTES: AS DIRECTED BY THE ENGINEER, TEMPORARY PAVEMENT MARKING (PAINT) MAY BE USED TO STRIPE FINAL TRAFFIC PATTERN ON (-L-, -Y1- AND -Y2-). TEMPORARY PAVEMENT MARKING SCHEDULE INCLUDES QUANTITIES FOR PLACING TWO APPLICATIONS ON FINAL SURFACE OF NEW ASPHALT IN PERMANENT TRAFFIC PATTERN WHICH WILL REMAIN IN PLACE UNTIL THE FINAL PAVEMENT MARKINGS ARE APPLIED.

FOR EACH PAINT PAVEMENT MARKING ITEM, 1X IMPLIES A SINGLE APPLICATION, 2X IMPLIES TWO APPLICATIONS, AND 3X IMPLIES THREE APPLICATIONS.

REVISIONS

7/9/2009 10:00:00 AM \\TrafficContr\TCP\U3100b.tc.TCP01A.dgn

CH ENGINEERING

PO BOX 30128 TELE 919.788.0224
RALEIGH, NC 27622 FAX 919.788.0232

APPROVED: *[Signature]* DATE: *July 10, 2009*

SEAL
NORTH CAROLINA
PROFESSIONAL
ENGINEER
RONDA B. EARLY

TEMPORARY PAVEMENT MARKING SCHEDULE

| | | |
|--------------|---------|-----------|
| SCALE: | | REVISIONS |
| DATE: | 6/29/09 | |
| DWG. BY: | JAP | |
| DESIGN BY: | JAP | |
| REVIEWED BY: | RBE | |

PROJECT NOTES

| | |
|---------------------|-----------|
| PROJ. REFERENCE NO. | SHEET NO. |
| U-3100B | TCP-2 |

GENERAL NOTES

CHANGES MAY BE REQUIRED WHEN PHYSICAL DIMENSIONS IN THE DETAIL DRAWINGS, STANDARD DETAILS AND ROADWAY DETAILS ARE NOT ATTAINABLE TO MEET FIELD CONDITIONS, OR RESULT IN DUPLICATE, OR UNDESIRE OVERLAPPING OF DEVICES. MODIFICATION MAY INCLUDE: MOVING, SUPPLEMENTING, COVERING OR REMOVAL OF DEVICES, AS DIRECTED BY THE ENGINEER.

THE FOLLOWING GENERAL NOTES APPLY AT ALL TIMES FOR THE DURATION OF THE CONSTRUCTION PROJECT, EXCEPT WHEN OTHERWISE NOTED IN THE PLAN, OR DIRECTED BY THE ENGINEER.

TIME RESTRICTIONS

- A) DO NOT CLOSE OR NARROW TRAVEL LANES AS FOLLOWS:
- | | |
|-----------|---------------------------|
| ROAD NAME | DAY AND TIME RESTRICTIONS |
|-----------|---------------------------|

| | |
|----------------------------|-------------------|
| -L- (OLD FAYETTEVILLE RD) | 7:00 AM - 9:00 AM |
| -Y1- (NC 54) | MONDAY-FRIDAY |
| -Y2- (OLD FAYETTEVILLE RD) | |

- B) DO NOT CONDUCT ANY HAULING OPERATIONS AGAINST THE FLOW OF TRAFFIC OF AN OPEN TRAVELWAY UNLESS THE HAULING OPERATION IS PROTECTED BY BARRIER OR GUARDRAIL OR AS DIRECTED BY THE ENGINEER.

LANE AND SHOULDER CLOSURE REQUIREMENTS

- C) REMOVE LANE CLOSURE DEVICES FROM THE LANE WHEN WORK IS NOT BEING PERFORMED BEHIND THE LANE CLOSURE OR WHEN A LANE CLOSURE IS NO LONGER NEEDED, OR AS DIRECTED BY THE ENGINEER.

- D) WHEN PERSONNEL AND/OR EQUIPMENT ARE WORKING WITHIN 15 FT OF AN AN OPEN TRAVEL LANE, CLOSE THE NEAREST OPEN SHOULDER USING ROADWAY STANDARD DRAWING NO. 1101.04 UNLESS THE WORK AREA IS PROTECTED BY BARRIER OR GUARDRAIL OR A LANE CLOSURE IS INSTALLED.

- E) WHEN PERSONNEL AND/OR EQUIPMENT ARE WORKING ON THE SHOULDER ADJACENT TO AN UNDIVIDED FACILITY AND WITHIN 5 FT OF AN OPEN TRAVEL LANE, CLOSE THE NEAREST OPEN TRAVEL LANE USING ROADWAY STANDARD DRAWING NO. 1101.02 UNLESS THE WORK AREA IS PROTECTED BY BARRIER OR GUARDRAIL.

WHEN PERSONNEL AND/OR EQUIPMENT ARE WORKING ON THE SHOULDER ADJACENT TO A DIVIDED FACILITY AND WITHIN 10 FT OF AN OPEN TRAVEL LANE, CLOSE THE NEAREST OPEN TRAVEL LANE USING ROADWAY STANDARD DRAWING NO. 1101.02 UNLESS THE WORK AREA IS PROTECTED BY BARRIER OR GUARDRAIL.

- F) WHEN PERSONNEL AND/OR EQUIPMENT ARE WORKING WITHIN A LANE OF TRAVEL OF AN UNDIVIDED OR DIVIDED FACILITY, CLOSE THE LANE ACCORDING TO THE TRAFFIC CONTROL PLANS, ROADWAY STANDARD DRAWINGS OR AS DIRECTED BY THE ENGINEER. CONDUCT THE WORK SO THAT ALL PERSONNEL AND/OR EQUIPMENT REMAIN WITHIN THE CLOSED TRAVEL LANE.

- G) DO NOT WORK SIMULTANEOUSLY WITHIN 15 FT ON BOTH SIDES OF AN OPEN TRAVELWAY, RAMP OR LOOP WITHIN THE SAME LOCATION UNLESS PROTECTED WITH GUARDRAIL OR BARRIER.

- H) PROVIDE TRAFFIC CONTROL FOR APPROPRIATE LANE CLOSURES FOR SURVEYING DONE BY DEPARTMENT.

PAVEMENT EDGE DROP OFF REQUIREMENTS

- I) BACKFILL AT A 6:1 SLOPE UP TO THE EDGE AND ELEVATION OF EXISTING PAVEMENT IN AREAS ADJACENT TO AN OPENED TRAVEL LANE THAT HAS AN EDGE OF PAVEMENT DROP-OFF AS FOLLOWS:

BACKFILL DROP-OFFS THAT EXCEED 2 INCHES ON ROADWAYS WITH POSTED SPEED LIMITS OF 45 MPH OR GREATER.

BACKFILL DROP-OFFS THAT EXCEED 3 INCHES ON ROADWAYS WITH POSTED SPEED LIMITS LESS THAN 45 MPH.

BACKFILL WITH SUITABLE COMPACTED MATERIAL, AS APPROVED BY THE ENGINEER, AT NO EXPENSE TO THE DEPARTMENT.

TRAFFIC PATTERN ALTERATIONS

- J) NOTIFY THE ENGINEER TWENTY ONE (21) CALENDAR DAYS PRIOR TO ANY TRAFFIC PATTERN ALTERATION.

SIGNING

- K) INSTALL ADVANCE WORK ZONE WARNING SIGNS WHEN WORK IS WITHIN 40 FT FROM THE EDGE OF TRAVEL LANE AND NO MORE THAN THREE (3) DAYS PRIOR TO THE BEGINNING OF CONSTRUCTION.
- L) PROVIDE PERMANENT SIGNS.
- M) ENSURE ALL NECESSARY SIGNING IS IN PLACE PRIOR TO ALTERING ANY TRAFFIC PATTERN.
- N) INSTALL BLACK ON ORANGE "DIP" SIGNS (W8-2) AND/OR "BUMP" SIGNS (W8-1) 200' IN ADVANCE OF THE UNEVEN AREA, OR AS DIRECTED BY THE ENGINEER.

TRAFFIC CONTROL DEVICES

- O) SPACE CHANNELIZING DEVICES IN WORK AREAS NO GREATER THAN TWICE THE POSTED SPEED LIMIT (MPH), EXCEPT 10 FT ON-CENTER IN RADIUS, AND 3 FT OFF THE EDGE OF AN OPEN TRAVELWAY, WHEN LANE CLOSURES ARE NOT IN EFFECT. WHEN SKINNY DRUMS ARE ALLOWED, REFER TO SECTION 1180 OF STANDARD SPECIFICATIONS FOR ROADS AND STRUCTURES OR AS SHOWN IN THE PLANS.
- P) PLACE ADDITIONAL SETS OF THREE CHANNELIZING DEVICES PERPENDICULAR TO THE EDGE OF TRAVELWAY ON 500 FT CENTERS WHEN UNOPENED LANES ARE CLOSED TO TRAFFIC.

PAVEMENT MARKINGS AND MARKERS

- Q) INSTALL TEMPORARY PAVEMENT MARKINGS ON INTERIM LAYERS OF PAVEMENT AS FOLLOWS:

| ROAD NAME | MARKING | MARKERS |
|----------------------------|---------|---------|
| -L- (OLD FAYETTEVILLE RD) | PAINT | NONE |
| -Y1- (NC 54) | PAINT | NONE |
| -Y2- (OLD FAYETTEVILLE RD) | PAINT | NONE |

- R) PLACE ONE APPLICATION OF PAINT FOR TEMPORARY TRAFFIC PATTERNS. PLACE A SECOND APPLICATION OF PAINT SIX (6) MONTHS AFTER THE INITIAL APPLICATION AND EVERY SIX MONTHS AS DIRECTED BY THE ENGINEER.
- S) TIE PROPOSED PAVEMENT MARKING LINES TO EXISTING PAVEMENT MARKING LINES.
- T) REMOVE/REPLACE ANY CONFLICTING/DAMAGED PAVEMENT MARKINGS AND MARKERS BY THE END OF EACH DAY'S OPERATION.
- U) TRACE THE EXISTING AND PROPOSED MONOLITHIC ISLAND LOCATIONS WITH PROPER COLOR PAVEMENT MARKINGS PRIOR TO REMOVAL AND INSTALLATION. PLACE DRUMS TO DELINEATE ANY EXISTING AND PROPOSED MONOLITHIC ISLANDS AFTER REMOVAL AND BEFORE INSTALLATION.

TEMPORARY / FINAL SIGNALS

- V) SHIFT AND REVISE ALL SIGNAL HEADS AS SHOWN ON THE SIGNAL PLAN.

MISCELLANEOUS

- W) POLICE MAY BE USED TO MAINTAIN TRAFFIC THROUGH THE WORK AREA AND/OR INTERSECTIONS, AS DIRECTED BY THE ENGINEER.

LOCAL NOTE

- LN-1) AS DIRECTED BY THE ENGINEER, TEMPORARY PAVEMENT MARKING (PAINT) MAY BE USED TO STRIPE FINAL TRAFFIC PATTERN ON -L-, -Y1-, AND -Y2-. TEMPORARY PAVEMENT MARKING SCHEDULE INCLUDES QUANTITIES FOR PLACING TWO APPLICATIONS OF PAINT ON FINAL SURFACE OF NEW ASPHALT WITH PERMANENT TRAFFIC PATTERN WHICH WILL REMAIN IN PLACE UNTIL THE FINAL PAVEMENT MARKINGS ARE APPLIED.

PHASING

NOTE:

USE INCIDENTAL STONE AS NECESSARY, MAINTAIN VEHICULAR ACCESS TO ALL DRIVEWAYS DURING THE LIFE OF THE CONTRACT UNLESS OTHERWISE NOTED IN THE PHASING OR DIRECTED BY THE ENGINEER.

RETURN TRAFFIC TO THE EXISTING PATTERN AT THE END OF EACH WORK DAY UNLESS OTHERWISE STATED IN THE PHASING OR DIRECTED BY THE ENGINEER.

COMPLETE ANY PROPOSED OR TEMPORARY WIDENING IN SUCH A MANNER THAT PONDING OF WATER WILL NOT OCCUR IN THE TRAVEL LANE.


PHASE I

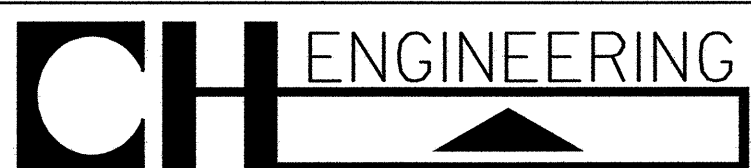
- STEP 1: PRIOR TO ANY CONSTRUCTION OPERATIONS, PLACE WORK ZONE ADVANCED WARNING SIGNS ON -L- (OLD FAYETTEVILLE ROAD) AND -Y- LINES IN ACCORDANCE WITH NCDOT DETAIL DRAWING FOR WORK ZONE SIGNS. SEE SHEET TCP-5.
- STEP 2: USING ROADWAY STANDARD DRAWING NO. 1101.02 (SHEETS 1 AND 3 OF 9), CONSTRUCT PROPOSED DRAINAGE ACCORDING TO ROADWAY PLANS AND INSTALL AND COVER PROPOSED SIGNAL HEADS.
- STEP 3: USING ROADWAY STANDARD DRAWING NO. 1101.02 (SHEETS 1 AND 3 OF 9) AND POLICE, PERFORM THE FOLLOWING:
- REMOVE EXISTING CONCRETE ISLANDS ON -L-, -Y1- AND -Y2-. PAVE AND REPAIR WHERE ISLANDS WERE REMOVED AND PROVIDE SUITABLE DRIVING SURFACE. SEE SHEET TCP-3
 - MILL AND WIDEN THE FOLLOWING UP TO BUT NOT INCLUDING THE FINAL LAYER OF SURFACE COURSE:
 - L- FROM -Y1- (WBL) TO STA 33+25.98
 - Y2- FROM -Y1 (EBL) TO STA 14+57.59

USING ROADWAY STANDARD DRAWING NO. 1101.02 (SHEET 3 OF 9) AND FLAGGERS, REMOVE EXISTING PAINTED ISLAND AND PLACE TEMPORARY PAVEMENT MARKINGS (PAINT) ON -Y1-, AS SHOWN ON SHEET TCP-3. SHIFT LEFT TURN LANE INTO NEW PATTERN AND ACTIVATE PROPOSED SIGNAL. CONSTRUCT RAISED GRASS MEDIAN AND OUTSIDE CURB AND GUTTER ON -Y1- (NC 54).

PHASE II

- STEP 1: USING ROADWAY STANDARD DRAWING NO 1101.02 (SHEETS 1 AND 3 OF 9), PLACE FINAL SURFACE COURSE ON -L- AND -Y- LINES. SEE PAVEMENT MARKING PLAN FOR FINAL PAVEMENT MARKINGS. SEE LN-1
- STEP 2: REMOVE ALL TRAFFIC CONTROL DEVICES AND OPEN ALL ROADS TO THE FINAL TRAFFIC PATTERN.

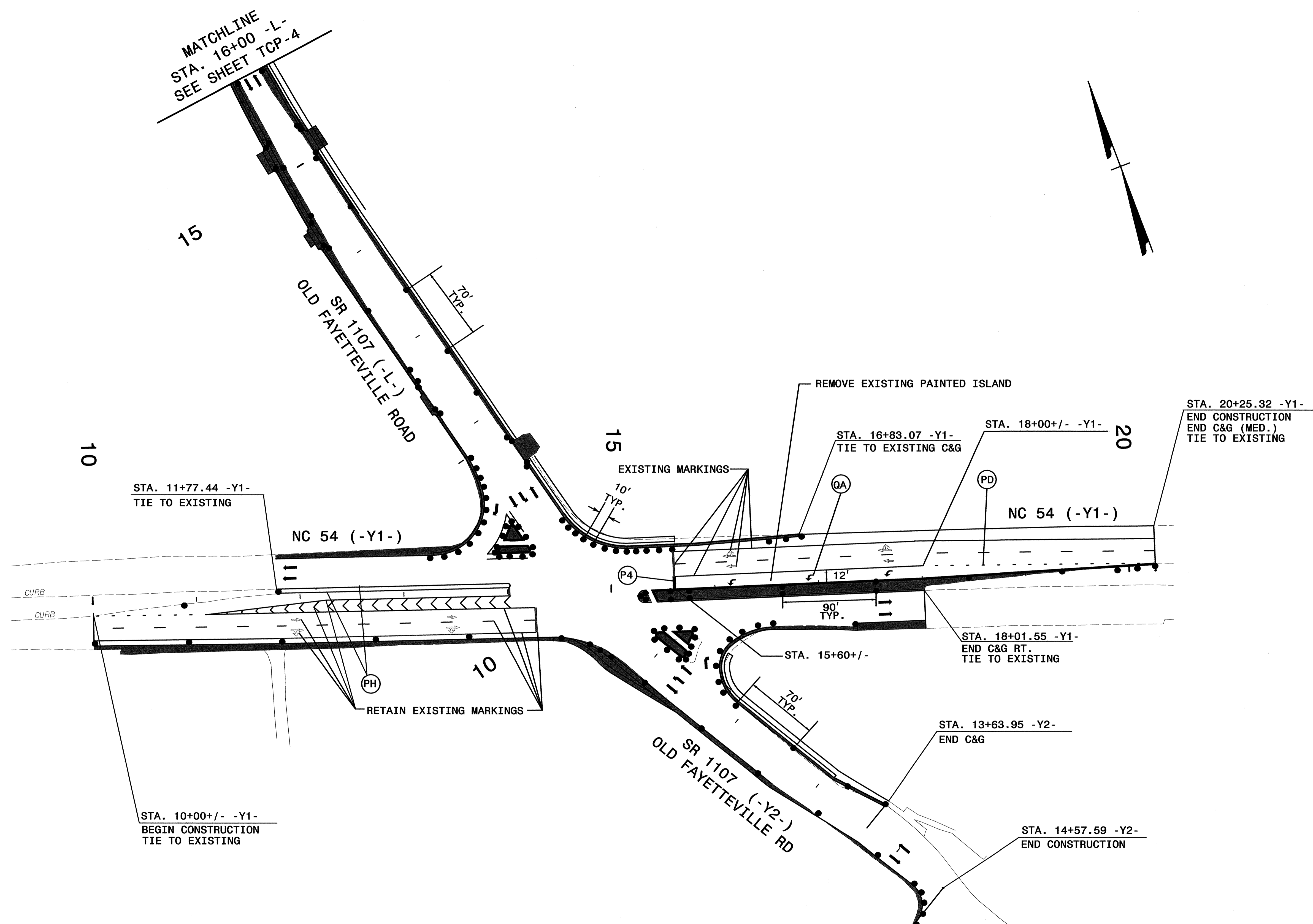
| | | | |
|--|------------------|---|-----------|
| APPROVED: <i>[Signature]</i> DATE: 7/16/09 | | PROJECT NOTES AND PHASING | |
| SCALE: NONE | DATE: 6/29/09 |  | REVISIONS |
| DESIGN BY: JAP | DESIGN BY: JAP | | |
| REVIEWED BY: RBE | REVIEWED BY: RBE | | |
| CADD FILE | CADD FILE | | |



PO BOX 30128 TELE 919.788.0224
RALEIGH, NC 27622 FAX 919.788.0232

REVISIONS

7/9/2009 11:50:00 AM U:\3100b\Traffic\TrafficControl\TCP-U3100b.tc_TCP02.dgn



REVISIONS

7/9/2009 10:00 AM U:\3100b\Traffic\TrafficControl\TCP\U3100B-fo-TCP03pl.dgn USERNAME

NOTE:
SEE SHEET TCP-1A FOR TEMPORARY PAVEMENT MARKING SCHEDULE.
(REMOVE PAINTED ISLAND ON -Y1-)

CH ENGINEERING

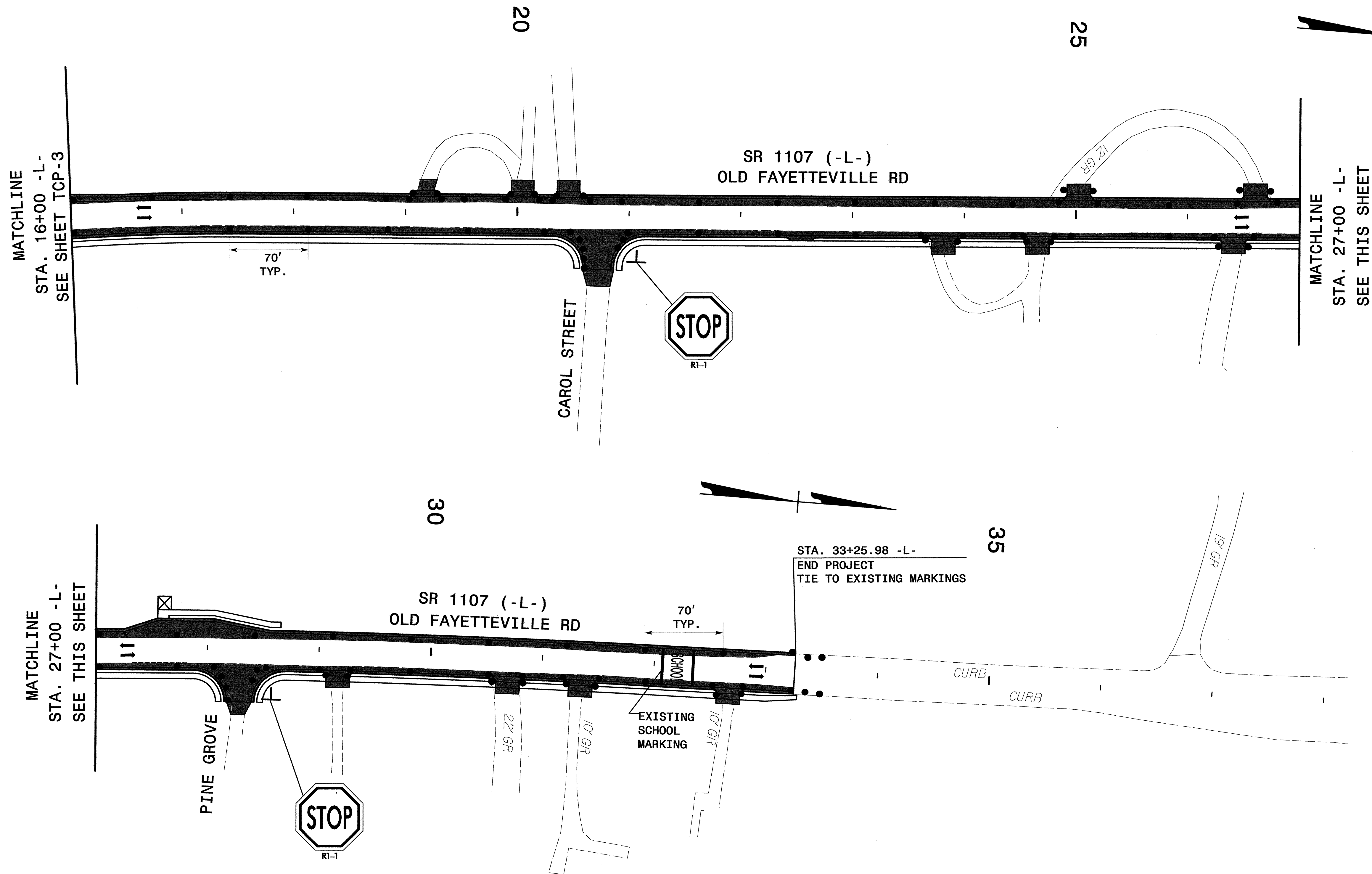
PO BOX 30128 TELE 919.788.0224
RALEIGH, NC 27622 FAX 919.788.0232

APPROVED: *[Signature]* DATE: 7-10-09

SEAL

PHASE I

| | | | |
|------------------|--|-----------|--|
| SCALE: 1" = 50' | | REVISIONS | |
| DATE: 6/29/09 | | | |
| DWG. BY: JAP | | | |
| DESIGN BY: JAP | | | |
| REVIEWED BY: RBE | | | |



REVISIONS

7/9/2009
 Y:\NG001\U3100b\Traffic\TrafficControl\TCP\U3100B.tc_TCP04pl.dgn
 USERNAME

CH ENGINEERING

PO BOX 30128 TELE 919.788.0224
 RALEIGH, NC 27622 FAX 919.788.0232

APPROVED: *Ronda B. Early* DATE: 7-10-09

SEAL

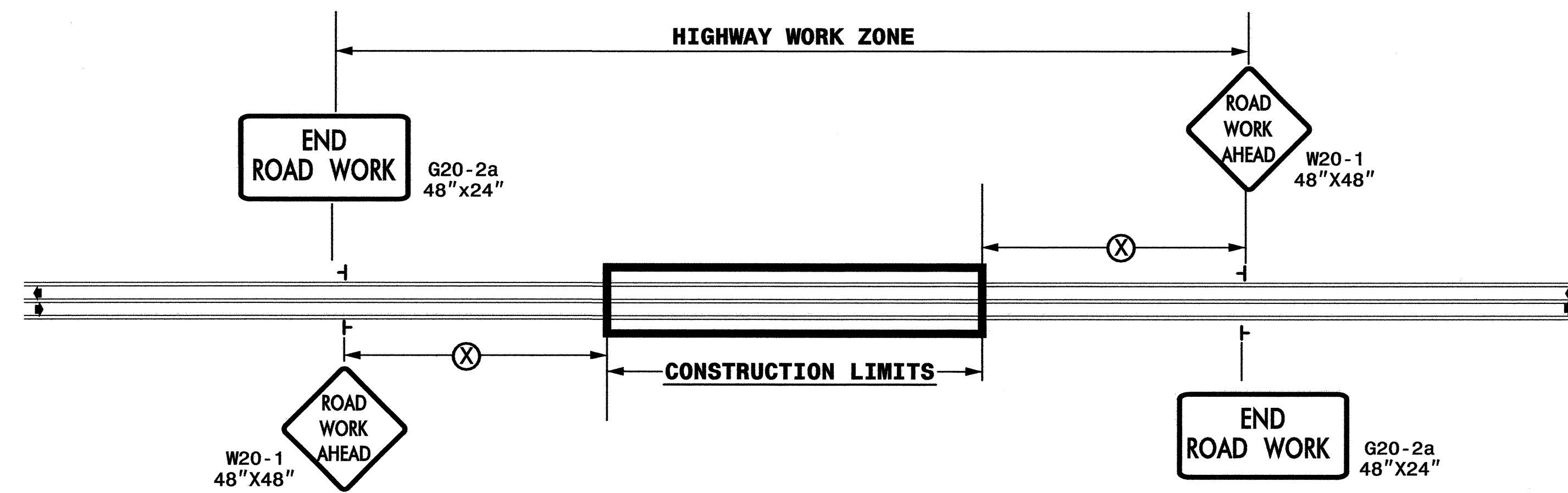
PHASE I

SCALE: 1" = 50'
 DATE: 6/29/09
 DWG. BY: JAP
 DESIGN BY: JAP
 REVIEWED BY: RBE

| REVISIONS | |
|-----------|--|
| | |
| | |
| | |

CADD FILE

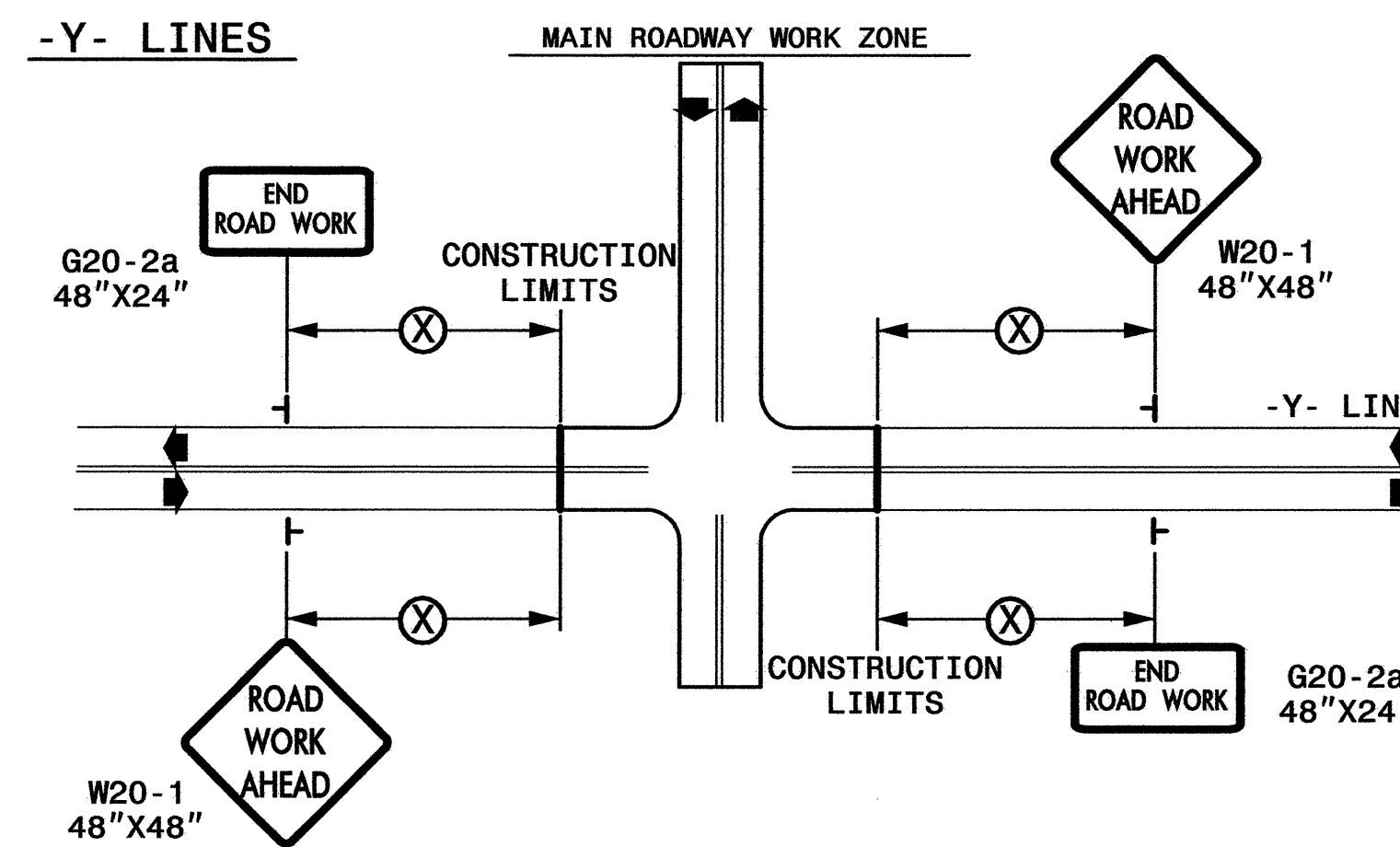
TWO-WAY UNDIVIDED ** (L-LINES)



| POSTED SPEED LIMIT (M.P.H.) | RECOMMENDED MINIMUM SIGN SPACING |
|-----------------------------|----------------------------------|
| ≤ 50 | 500' |
| ≥ 55 | 1000' |

STATE OF NORTH CAROLINA
DEPT. OF TRANSPORTATION
DIVISION OF HIGHWAYS
RALEIGH, N.C.

ROADWAYS INTERSECTING ALONG 2 WAY UNDIVIDED WORK ZONE (Y-LINES)



GENERAL NOTES

- USE FLUORESCENT ORANGE SHEETING (TYPE VII OR HIGHER) ON ALL ADVANCED WORK ZONE SIGNS.
- DO NOT INSTALL ADVANCE WARNING SIGNS MORE THAN 3 DAYS PRIOR TO BEGINNING OF WORK.
- SIGNS SHOWN ARE REQUIRED FOR WORK ZONES THAT WILL REMAIN IN EFFECT OVERNIGHT. FOR SHORT-TERM DAILY MAINTENANCE TYPE OPERATIONS, THIS SIGNING APPLICATION IS OPTIONAL; MAY USE ONLY APPLICABLE ROADWAY STANDARD DRAWINGS INSTEAD. HOWEVER, IF THIS SIGNING APPLICATION IS USED, SIGNS MAY BE PORTABLE MOUNTED.
- ALL SIGN SPACING DIMENSIONS ARE APPROXIMATE, FIELD ADJUST AS NECESSARY OR AS DIRECTED.
- USE 3LB STEEL U-CHANNEL POST OR 4" X 4" WOOD POST FOR ALL WORK ZONE SIGNS. 3LB STEEL U-CHANNEL POSTS MUST MEET THE REQUIREMENTS OF STANDARD SPECIFICATION SECTION 1094-1(B), MAY BE GALVANIZED STEEL, OR MAY BE PAINTED GREEN BY THE POST MANUFACTURER. SQUARE STEEL TUBING POSTS HAVING EQUIVALENT STRENGTH OF THE 3 LB STEEL U-CHANNEL POST ARE ALSO ACCEPTABLE FOR USE. ERECT SIGNS PER ROADWAY STANDARD DRAWING 1110.01. PAYMENT FOR WOOD POSTS, 3LB STEEL U-CHANNEL AND SQUARE STEEL TUBING POSTS WITH SIGNS WILL BE MADE ACCORDING TO STANDARD SPECIFICATION "WORK ZONE SIGNS" SECTION 1110.
- WHEN NECESSARY, USE SPLICING IN ACCORDANCE WITH ROADWAY STANDARD DRAWING NO. 1110.01. REMOVE ENTIRE POST WHEN REMOVING SIGNS WITH SPLICED POSTS.
- DO NOT BACK BRACE SIGN SUPPORTS.
- ** TWO-WAY UNDIVIDED ADVANCE WARNING SIGN CONFIGURATION MAY BE USED ON URBAN MULTI-LANE FACILITIES WHERE CONDITIONS LIMIT THE USE OF DUAL MOUNTED SIGNS AS DETERMINED BY THE ENGINEER.

LEGEND

└ STATIONARY SIGN

◀ DIRECTION OF TRAFFIC FLOW

DETAIL DRAWING FOR
TWO-WAY UNDIVIDED
WORK ZONE WARNING SIGNS

SHEET 1 OF 1

| | | | |
|--|--|--|----------------------------|
| APPROVED: <i>[Signature]</i> DATE: 7-10-09 | DETAIL DRAWING FOR TWO-WAY UNDIVIDED AND URBAN FREEWAYS ADVANCED WORK ZONE WARNING SIGNS | | |
| | SCALE: NONE | | |
| | DATE: | | REVISIONS |
| | DESIGN BY: | | 7-98 10/01 |
| | REVIEWED BY: | | 10-98 03/04 01/01 11/04 |

7/9/2009 1:00:01 PM U:\3100b\Traffic\TrafficControl\TCP\U3100B+tc_TCP05wzws.dgn USER:NAME