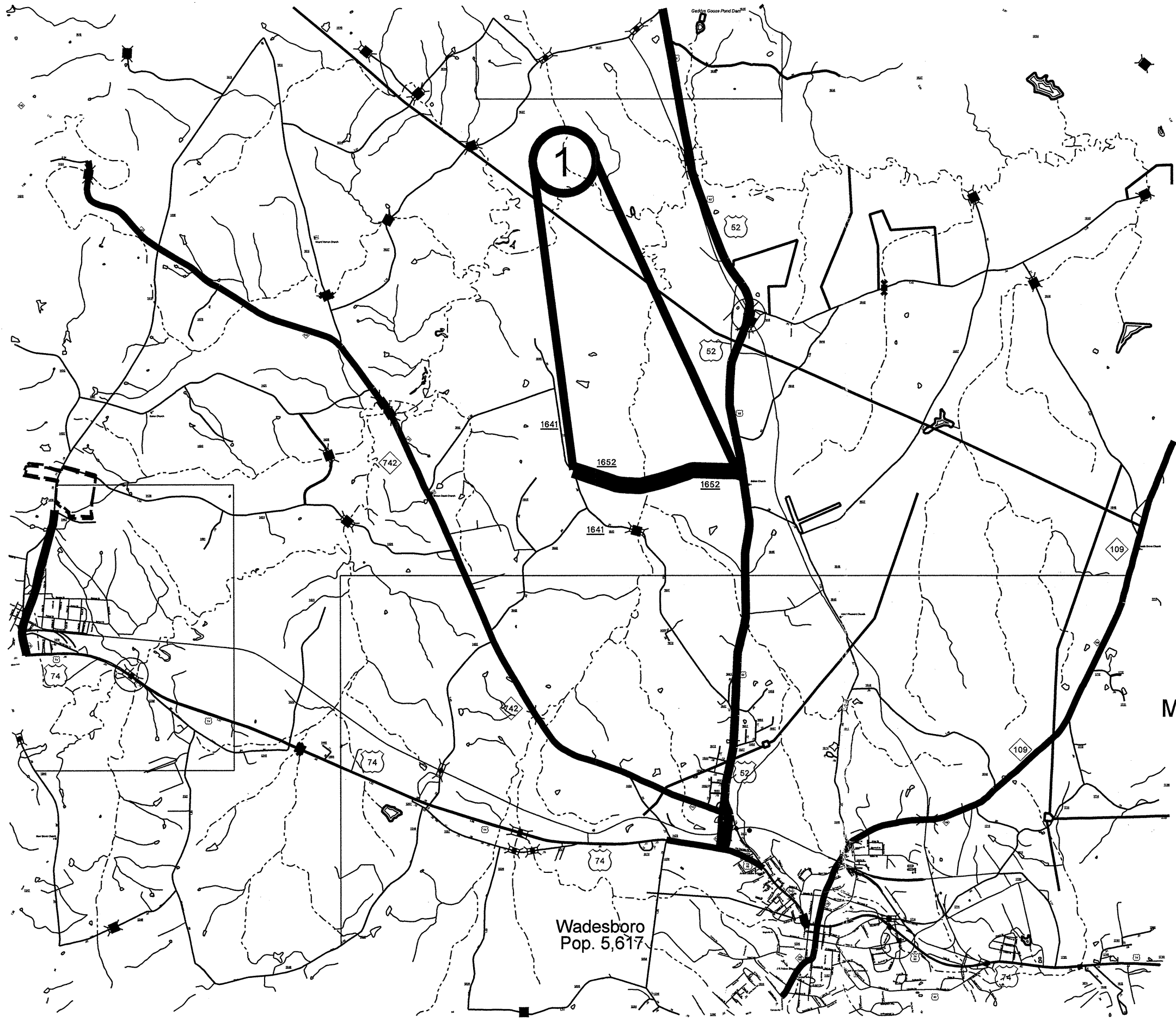
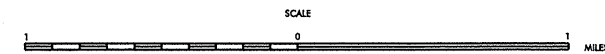


STATE	PROJECT NO.	SHEET NO.	TOTAL SHEETS
N.C.	10CR.2004.20	1	
F.A. PROJECT NO.			



ENLARGED MUNICIPAL AND SUBURBAN AREAS
ANSON COUNTY

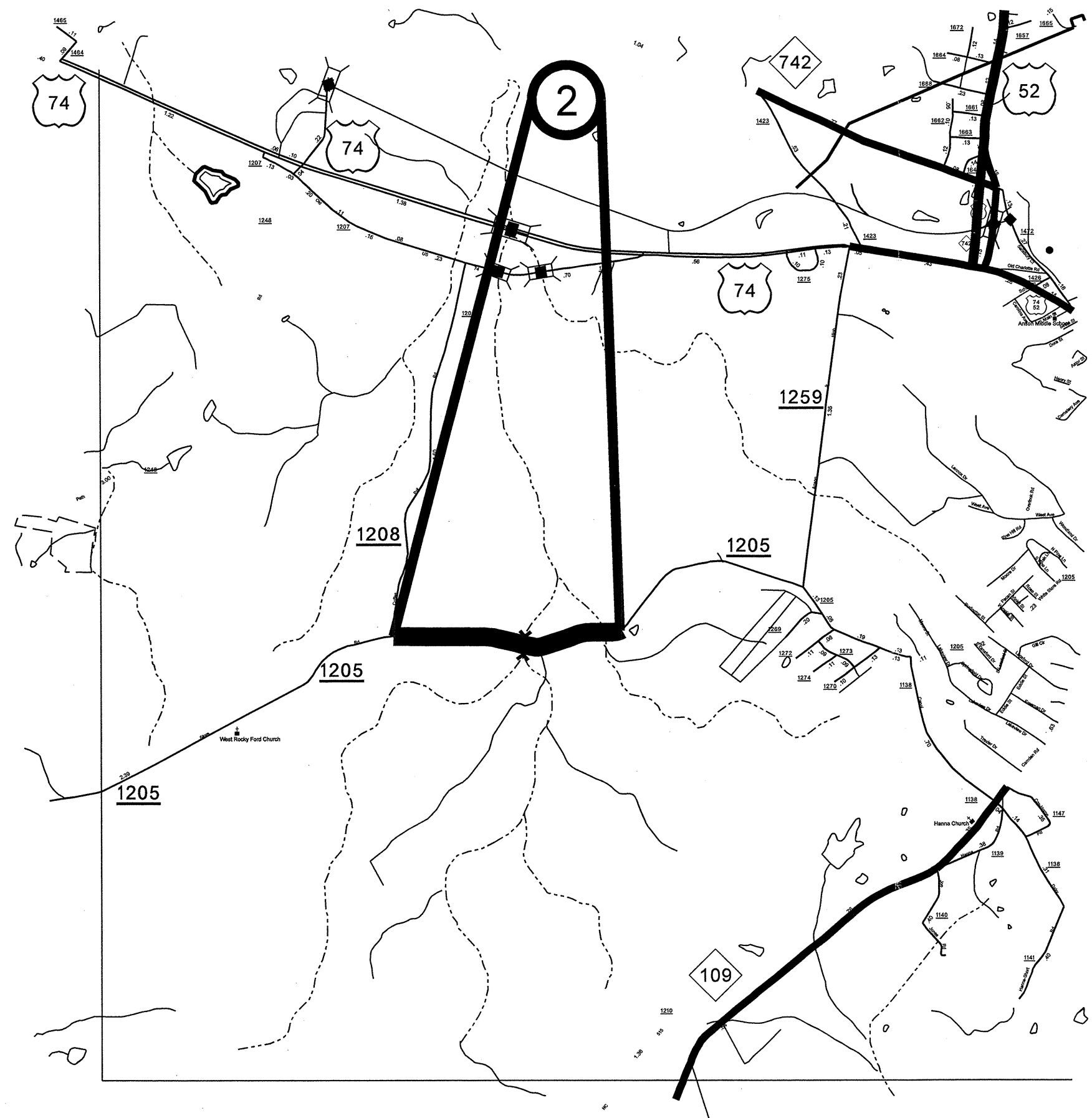
NORTH CAROLINA
 PREPARED BY THE
 NORTH CAROLINA DEPARTMENT OF TRANSPORTATION
 DIVISION OF HIGHWAYS - GIS UNIT
 IN COOPERATION WITH THE
 U.S. DEPARTMENT OF TRANSPORTATION
 FEDERAL HIGHWAY ADMINISTRATION



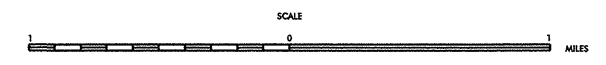
MAP #1 SR-1652 (LOCKART RD) (1.55 MILES)
FROM US 52 NORTH TO SR-1641
(BROWN CREEK CH RD)

NOTE: DO NOT RESURFACE OVER ANY BRIDGES.

STATE	PROJECT NO.	SHEET NO.	TOTAL SHEETS
N.C.		2	
F.A. PROJECT NO.			



ENLARGED MUNICIPAL AND SUBURBAN AREAS
ANSON COUNTY
 NORTH CAROLINA
PREPARED BY THE
 NORTH CAROLINA DEPARTMENT OF TRANSPORTATION
 DIVISION OF HIGHWAYS - GIS UNIT
IN COOPERATION WITH THE
 U.S. DEPARTMENT OF TRANSPORTATION
 FEDERAL HIGHWAY ADMINISTRATION



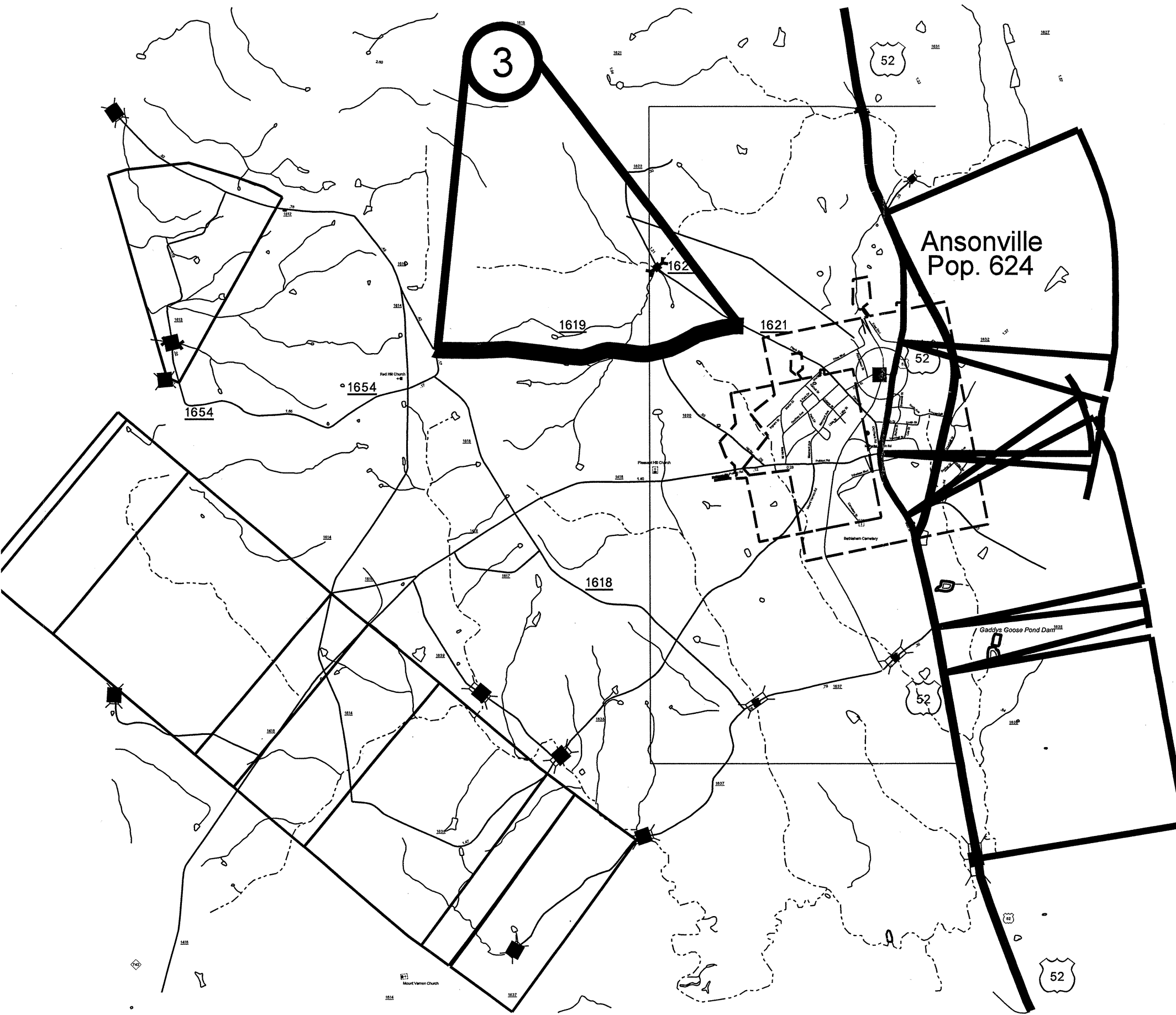
MAP #2 SR-1205 (WHITE STORE RD) (0.82 MILES)

**FROM SR-1208 (COFFEE POT RD) TO
 PAVEMENT JOINT APPROX 0.9 MILES**

WEST OF SR-1259 (ANSON HIGH SCHOOL RD)

**NOTE: DO NOT RESURFACE OVER ANY
 BRIDGES.**

STATE	PROJECT NO.	SHEET NO.	TOTAL SHEETS
N.C.		3	
F.A. PROJECT NO.			



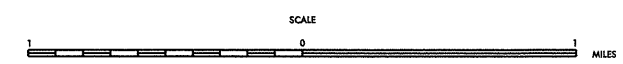
ENLARGED MUNICIPAL AND SUBURBAN AREAS

ANSON COUNTY

NORTH CAROLINA

PREPARED BY THE
NORTH CAROLINA DEPARTMENT OF TRANSPORTATION
DIVISION OF HIGHWAYS - GIS UNIT

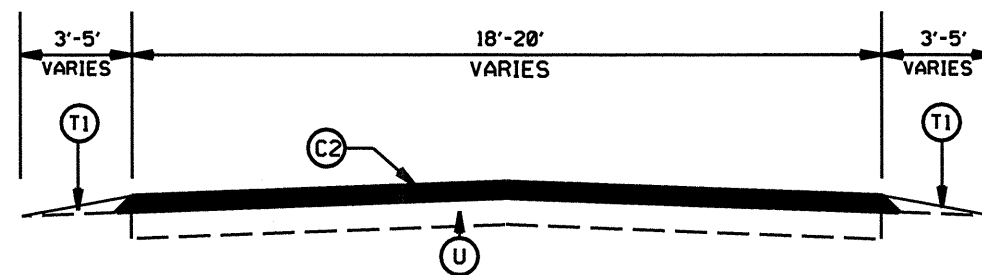
IN COOPERATION WITH THE
U.S. DEPARTMENT OF TRANSPORTATION
FEDERAL HIGHWAY ADMINISTRATION



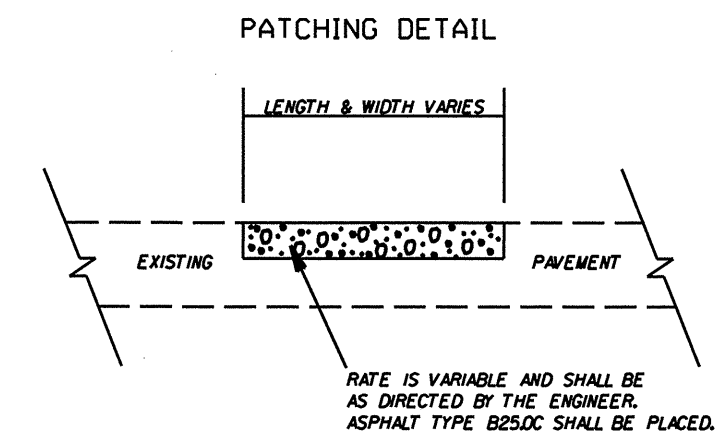
**MAP #3 SR-1619 (RANDALL RD) (1.82 MILES)
FROM SR-1621 (PLANK RD) TO SR-1654
(HOUGH RD)**

**NOTE: DO NOT RESURFACE OVER ANY
BRIDGES.**

STATE	PROJECT NO.	SHEET NO.	TOTAL SHEETS
N.C.	10CR.2004L20	4	
F.A. PROJECT NO.			



TYPICAL SECTION NO. 1




NOTES: 1: DO NOT OVERLAY OVER BRIDGE ON MAP #1 SR-1652 (LOCKART RD.)
 2: LEVELING COURSE TO BE PLACED AT LOCATIONS AS DIRECTED BY ENGINEER.

PAVEMENT SCHEDULE

(C2)	PROP. APPROX. 1.5" ASPHALT CONC. SURFACE COURSE, TYPE S9.5B, AT AN AVERAGE RATE OF 168 LBS. PER SQ. YD.
(T1)	SHOULDER RECONSTRUCTION
(U)	EXISTING PAVEMENT

2009 ANSON COUNTY
RESURFACING

SCALE	-NA-		REVISIONS	
DATE	07/09			
DWG. BY	JAB			
DESIGN BY	JAB			
APPROVED	JNU			

PROJECT NO.	SHEET NO.	TOTAL NO.
0CR.20041.20, 10CR.20041.21 10CR.20041.22,	5	

SUMMARY OF QUANTITIES

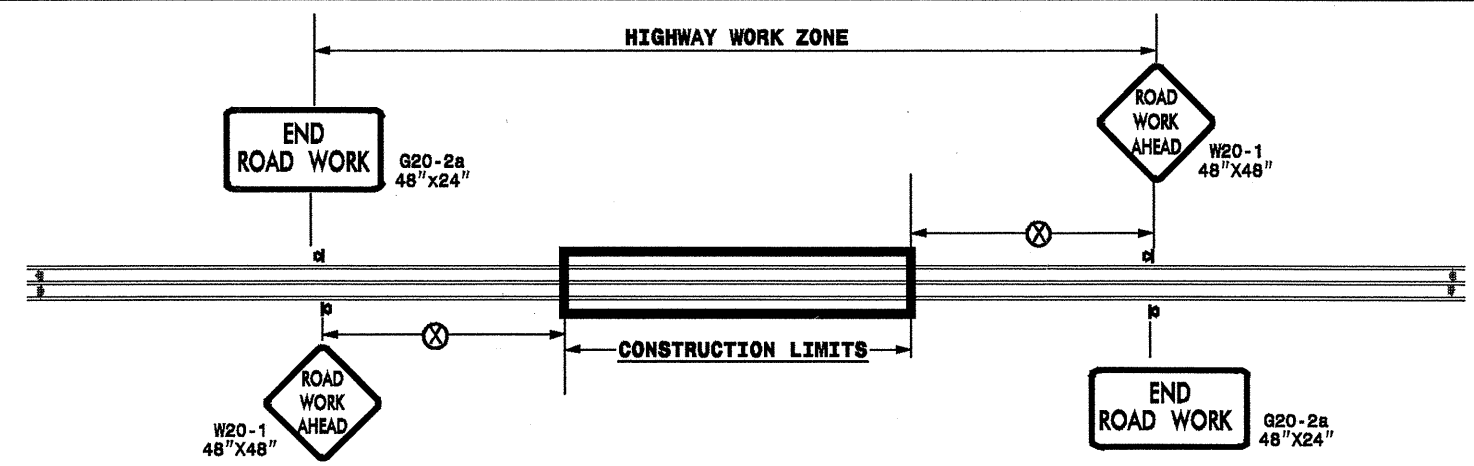
PROJECT NO	COUNTY	MAP NO	ROUTE	DESCRIPTION	TYP NO	FINAL SURFACE TESTING REQUIRED	LENGTH MI	WIDTH FT	BORROW CY	STABILIZER AGGREGATE TONS	INCIDENTAL STONE BASE TONS	SHOULDER RECONSTRUCTION SMI	DITCHING LF	INCIDENTAL MILLING SY	SURFACE COURSE, S9.5B TONS	LEVELING COURSE, S9.5B TONS	PG 64-22 PLANT MIX TONS	PATCHING EXISTING PAVEMENT TONS	TEMPORARY SILT FENCE LF	STONE FOR EROSION CONTROL, CLASS B TN	SEDIMENT CONTROL STONE TN	SEED & MULCHING AC
10CR.20041.20	Anson	1	SR-1652 (LOCKART RD)	FROM US 52 NORTH TO SR-1641 (BROWN CRK CH RD.)	1	No	1.55	20	62	135	100	3.1	233	107	1580	600	134	650	315	33	17	1.5
10CR.20041.21	Anson	2	SR-1205 (WHITE STORE RD)	FROM SR-1208 (COFFEE POT RD.) TO PAVEMENT JOINT APPROX. 0.9 MILES WEST OF SR-1259 (ANSON HIGH SCHOOL RD.)	1	No	0.82	18	33	66	55	1.64	123	50	732	290	63	330	125	17	9	0.8
10CR.20041.22	Anson	3	SR-1619 (RANDALL RD)	FROM SR-1621 (PLANK RD.) TO SR-1654 (HOUGH RD.)	1	No	1.82	18	73	146	115	3.64	273	50	1800	640	150	730	275	37	19	1.8
GRAND TOTAL							4.19		168	347	270	8.38	629	207	4112	1530	347	1710	715	87	45	4.1

PROJECT NO.	SHEET NO.	TOTAL NO.
10CR.20041.20, 10CR.20041.21 10CR.20041.22,		

THERMOPLASTIC AND PAINT QUANTITIES

PROJECT NO	COUNTY	MAP NO	ROUTE	DESCRIPTION	4685000000-E	4686000000-E	4900000000-N
					4" X 90 M WHITE THERMO LF	4" X 120 M YELLOW THERMO LF	YELLOW & YELLOW MARKERS EA
10CR.20041.20	Anson	1	SR-1652 (LOCKART RD)	FROM US 52 NORTH TO SR-1641 (BROWN CRK CH RD.)	16,500	15,200	105
10CR.20041.21	Anson	2	SR-1205 (WHITE STORE RD)	FROM SR-1208 (COFFEE POT RD.) TO PAVEMENT JOINT APPROX. 0.9 MILES WEST OF SR-1259 (ANSON HIGH SCHOOL RD.)	8,660	8,020	55
10CR.20041.22	Anson	3	SR-1619 (RANDALL RD)	FROM SR-1621 (PLANK RD.) TO SR-1654 (HOUGH RD.)	19,250	17,800	121
GRAND TOTAL					44,410	41,020	281

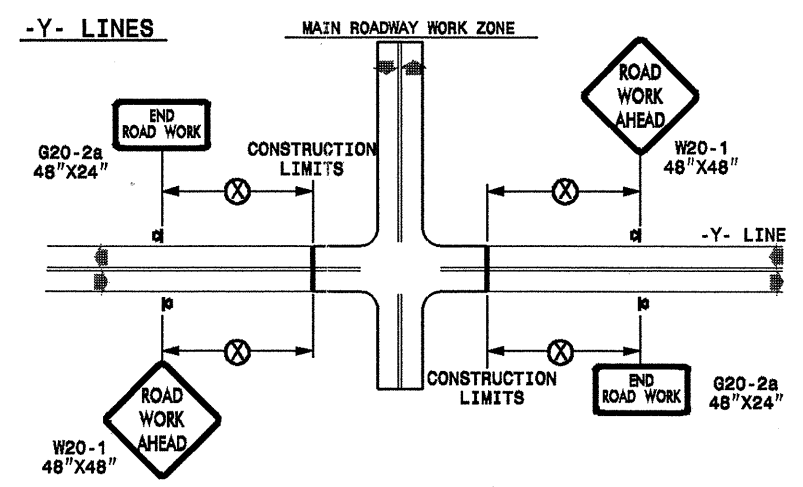
TWO-WAY UNDIVIDED ** (L-LINES)



POSTED SPEED LIMIT (M.P.H.)	RECOMMENDED MINIMUM SIGN SPACING
≤ 50	500'
≥ 55	1000'

STATE OF NORTH CAROLINA
DEPT. OF TRANSPORTATION
DIVISION OF HIGHWAYS
RALEIGH, N.C.

ROADWAYS INTERSECTING ALONG 2 WAY UNDIVIDED WORK ZONE (Y-LINES)



DETAIL DRAWING
FOR TWO-WAY UNDIVIDED
WORK ZONE WARNING SIGNS

GENERAL NOTES

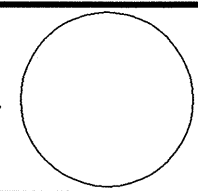

- USE FLUORESCENT ORANGE SHEETING (TYPE VII OR HIGHER) ON ALL ADVANCE WORK ZONE SIGNS.
- DO NOT INSTALL ADVANCE WARNING SIGNS MORE THAN 3 DAYS PRIOR TO BEGINNING OF WORK.
- ALL SIGN SPACING DIMENSIONS ARE APPROXIMATE, FIELD ADJUST AS NECESSARY OR AS DIRECTED.
- USE PORTABLE WORK ZONE SIGNS ONLY WITH PORTABLE WORK ZONE SIGN STANDS SPECIFICALLY DESIGNED FOR ONE ANOTHER. PORTABLE WORK ZONE SIGNS MAY BE ROLL UP OR APPROVED COMPOSITE.
- PROVIDE PORTABLE WORK ZONE SIGN STANDS, PORTABLE SIGNS AND SIGN SHEETING WHICH ARE LISTED ON THE NORTH CAROLINA DEPARTMENT OF TRANSPORTATION'S APPROVED PRODUCT LIST OR ACCEPTED AS TRAFFIC QUALIFIED BY THE TRAFFIC CONTROL UNIT.
- ** TWO-WAY UNDIVIDED ADVANCE WARNING SIGN CONFIGURATION MAY BE USED ON URBAN MULTI-LANE FACILITIES WHERE CONDITIONS LIMIT THE USE OF DUAL MOUNTED SIGNS AS DETERMINED BY THE ENGINEER.

LEGEND

◀ PORTABLE SIGN

➡ DIRECTION OF TRAFFIC FLOW

SHEET 1 OF 1

APPROVED: _____ DATE: _____	DETAIL DRAWING FOR TWO-WAY UNDIVIDED ADVANCED WORK ZONE WARNING SIGNS	
SEAL 		
SCALE: NONE		REVISIONS
DATE: _____		7-98 10/01
DWG. BY: _____		10-98 03/04
DESIGN BY: _____		01/01 11/04
REVIEWED BY: _____		

20-NOV-2008 18:29
 C:\working\ref\AT\11231502
 P:\seymor
 20-Nov-2008 18:29
 resurfacing\div10\c202527a-c-10cr2004120x3-2wayundivurbfrwys\july2006-portable.dgn