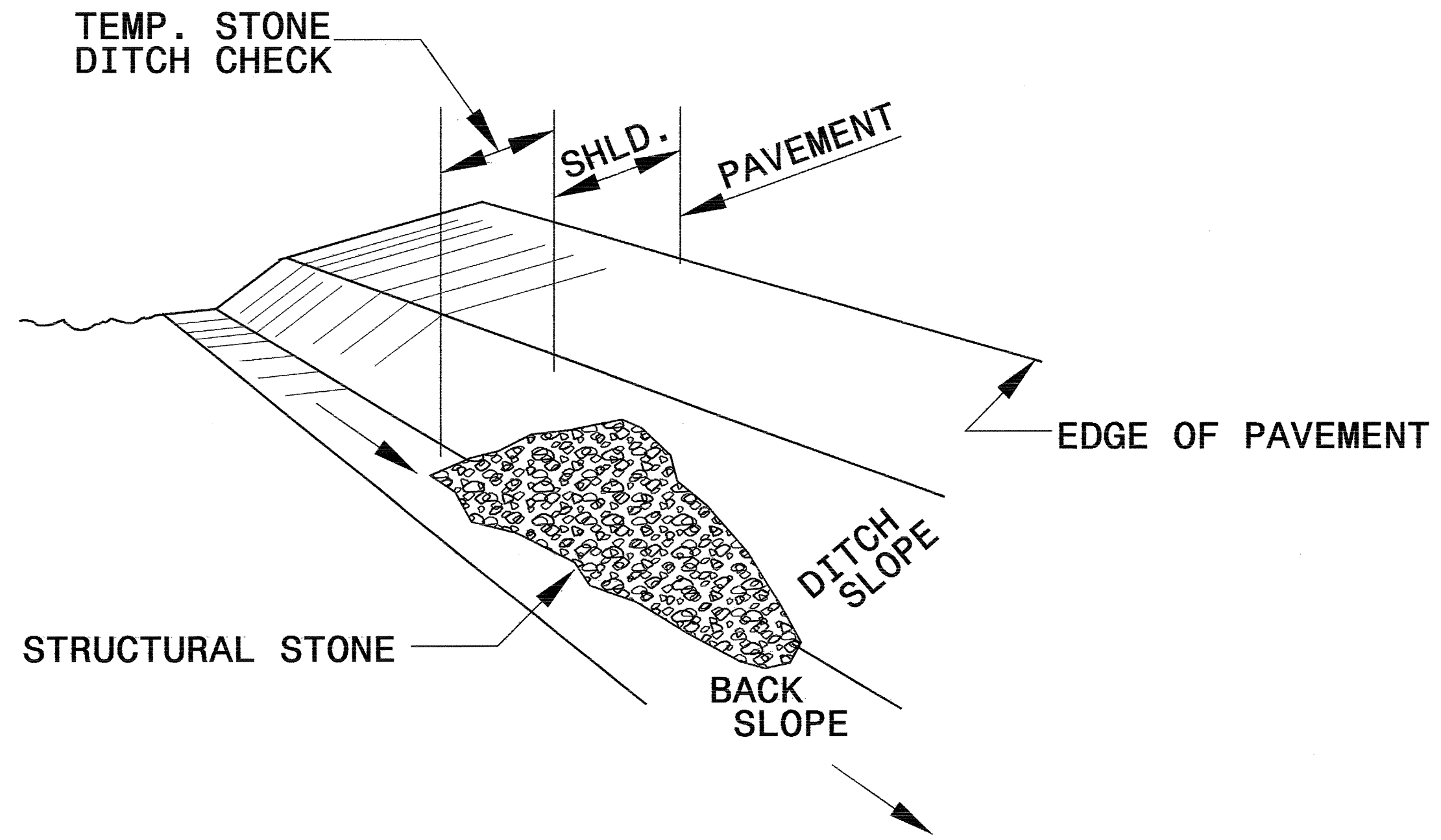


PROJECT REFERENCE NO. 30000143	SHEET NO. EC-2
RW SHEET NO.	
ROADWAY DESIGN ENGINEER	HYDRAULICS ENGINEER

TEMPORARY ROCK SILT CHECK TYPE 'B' DETAIL

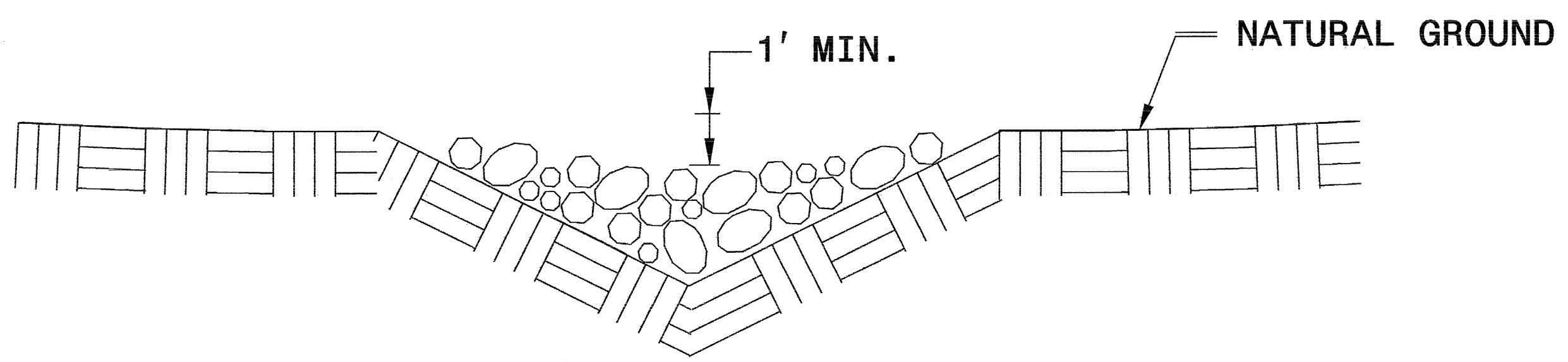


ISOMETRIC VIEW

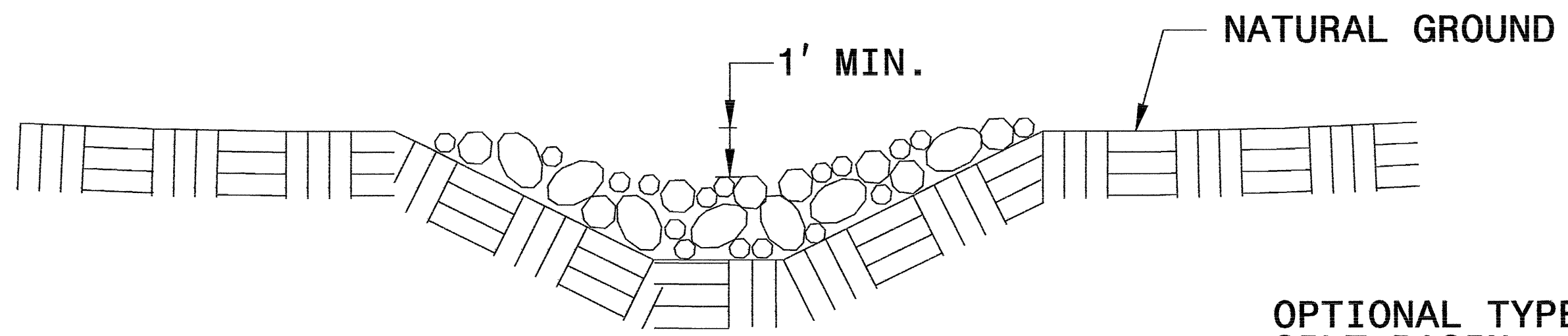
NOTES:

USE CLASS 'B' EROSION CONTROL STONE FOR STRUCTURAL STONE.

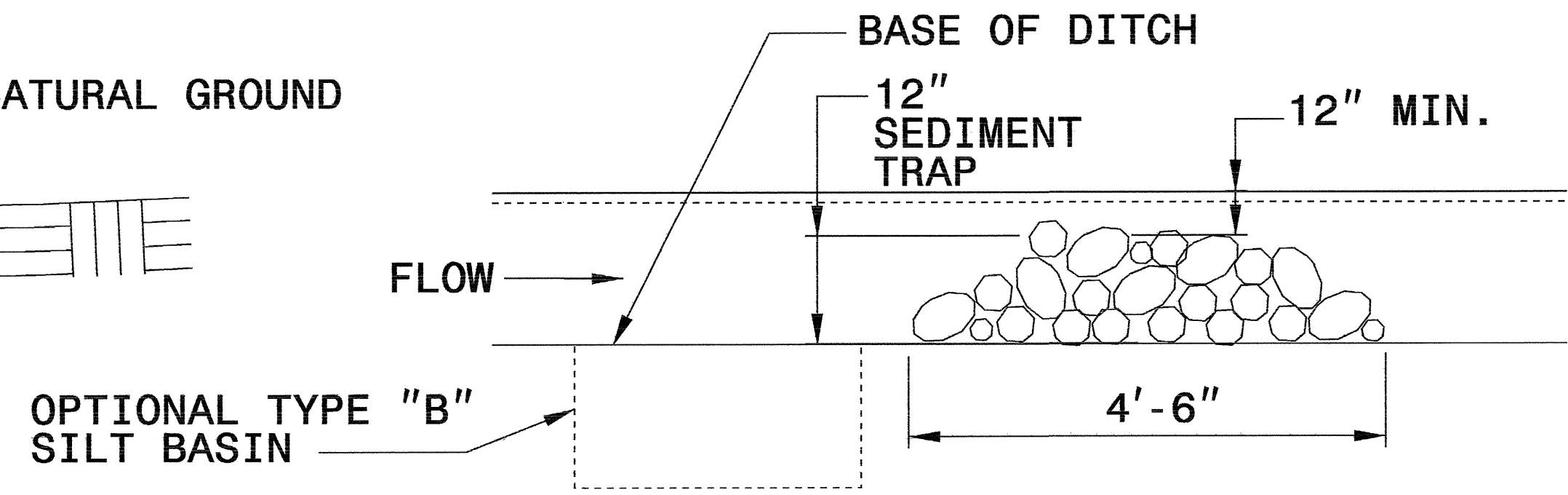
THE ENGINEER MAY DIRECT THE OPTION OF CLASS "A" STONE FOR SITES HAVING LESS THAN ONE (1) ACRE DRAINAGE AREA AND A DITCH GRADE LESS THAN 3%.



CROSS SECTION VEE DITCH



CROSS SECTION TRAPEZOIDAL DITCH

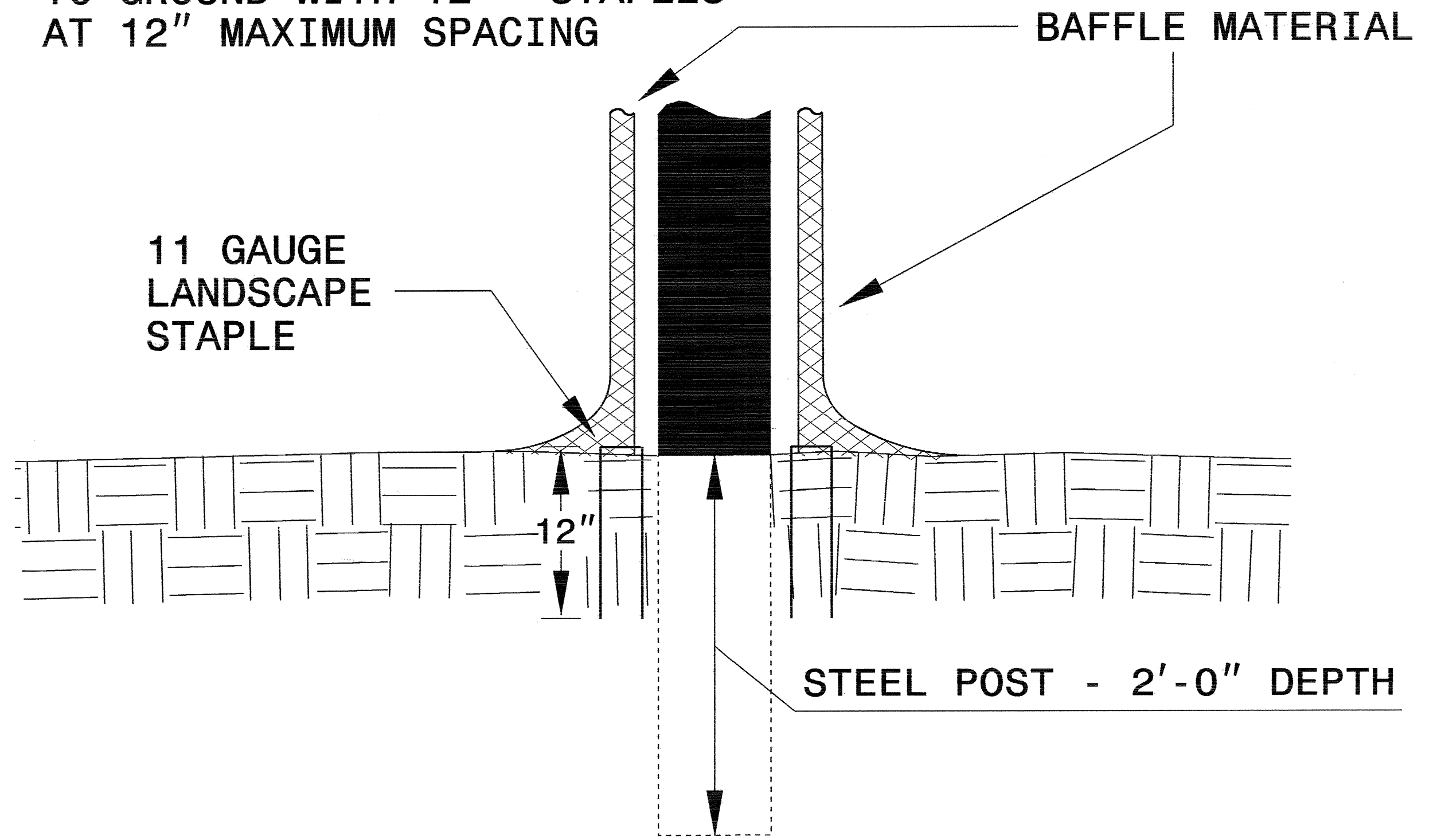
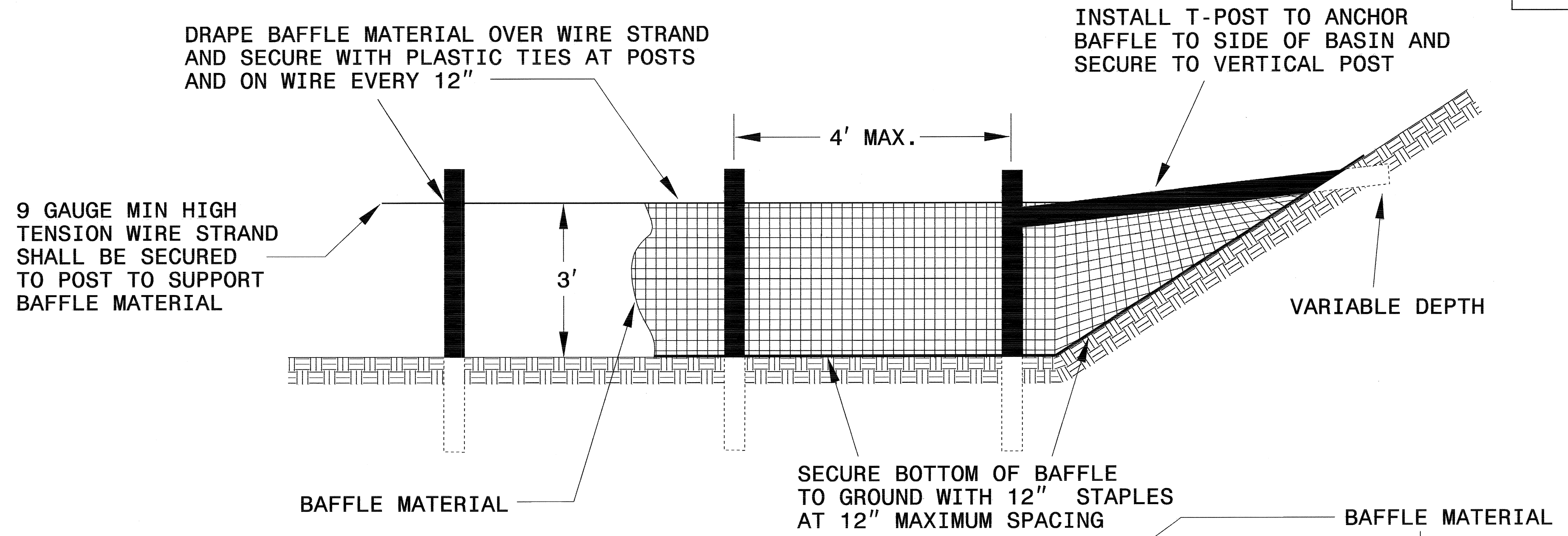


ELEVATION VIEW

OPTIONAL TYPE "B" SILT BASIN

PROJECT REFERENCE NO. 3000014.3	SHEET NO. EC-2A
RW SHEET NO.	
ROADWAY DESIGN ENGINEER	HYDRAULICS ENGINEER

COIR FIBER BAFFLE DETAIL



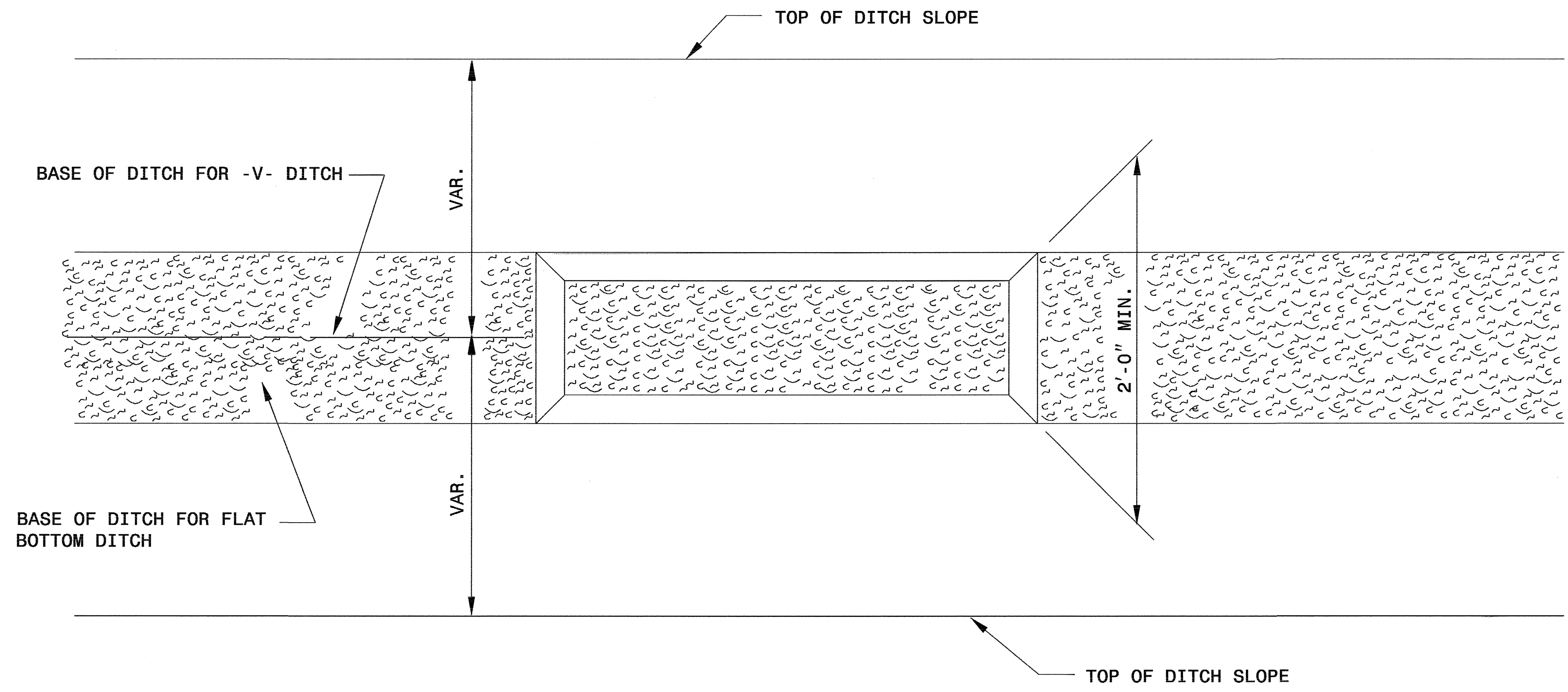
NOTES:

1. INSTALL THREE(3) COIR FIBER BAFFLES IN SILT BASINS AND SEDIMENT DAMS AT DRAINAGE OUTLETS WITH A SPACING OF $\frac{1}{4}$ THE BASIN LENGTH.
2. TWO(2) COIR FIBER BAFFLES CAN BE INSTALLED IN SILT BASINS AND DAMS LESS THAN 20 FT. IN LENGTH WITH A SPACING OF $\frac{1}{3}$ THE BASIN LENGTH.
3. TOP HEIGHT OF COIR FIBER BAFFLES SHALL NOT BE BELOW BASE OF EMERGENCY SPILLWAY ELEVATION.

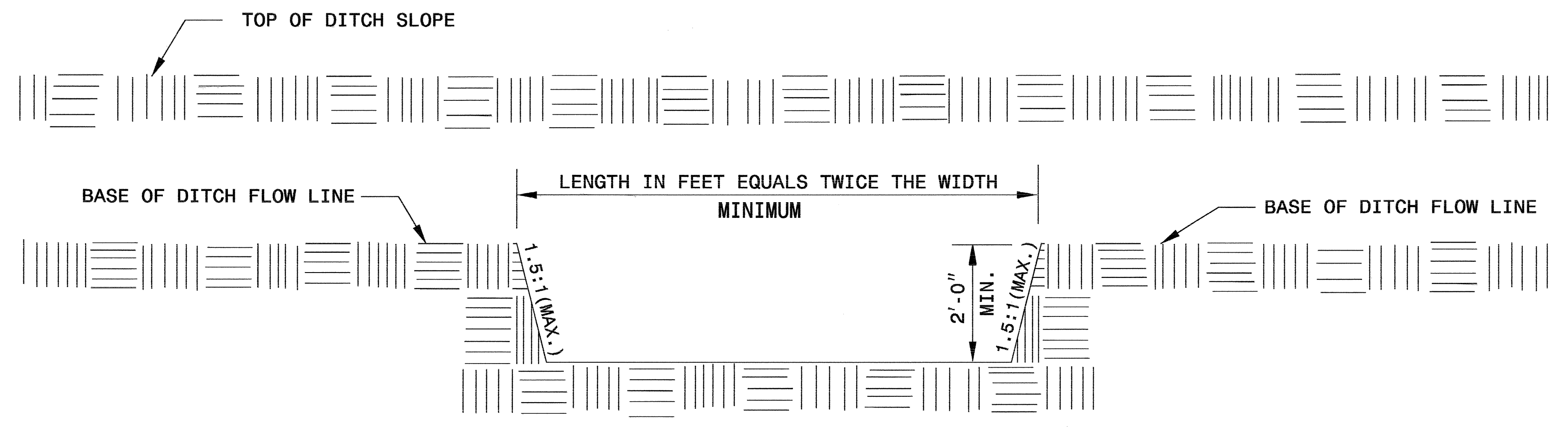
BAFFLE MATERIAL SHALL BE SECURED TO THE BOTTOM AND SIDES OF BASIN USING 12" LANDSCAPE STAPLES

PROJECT REFERENCE NO. 30000J4.3	SHEET NO. EC-2C
RW SHEET NO.	
ROADWAY DESIGN ENGINEER	HYDRAULICS ENGINEER

SILT BASIN 'B' DETAIL



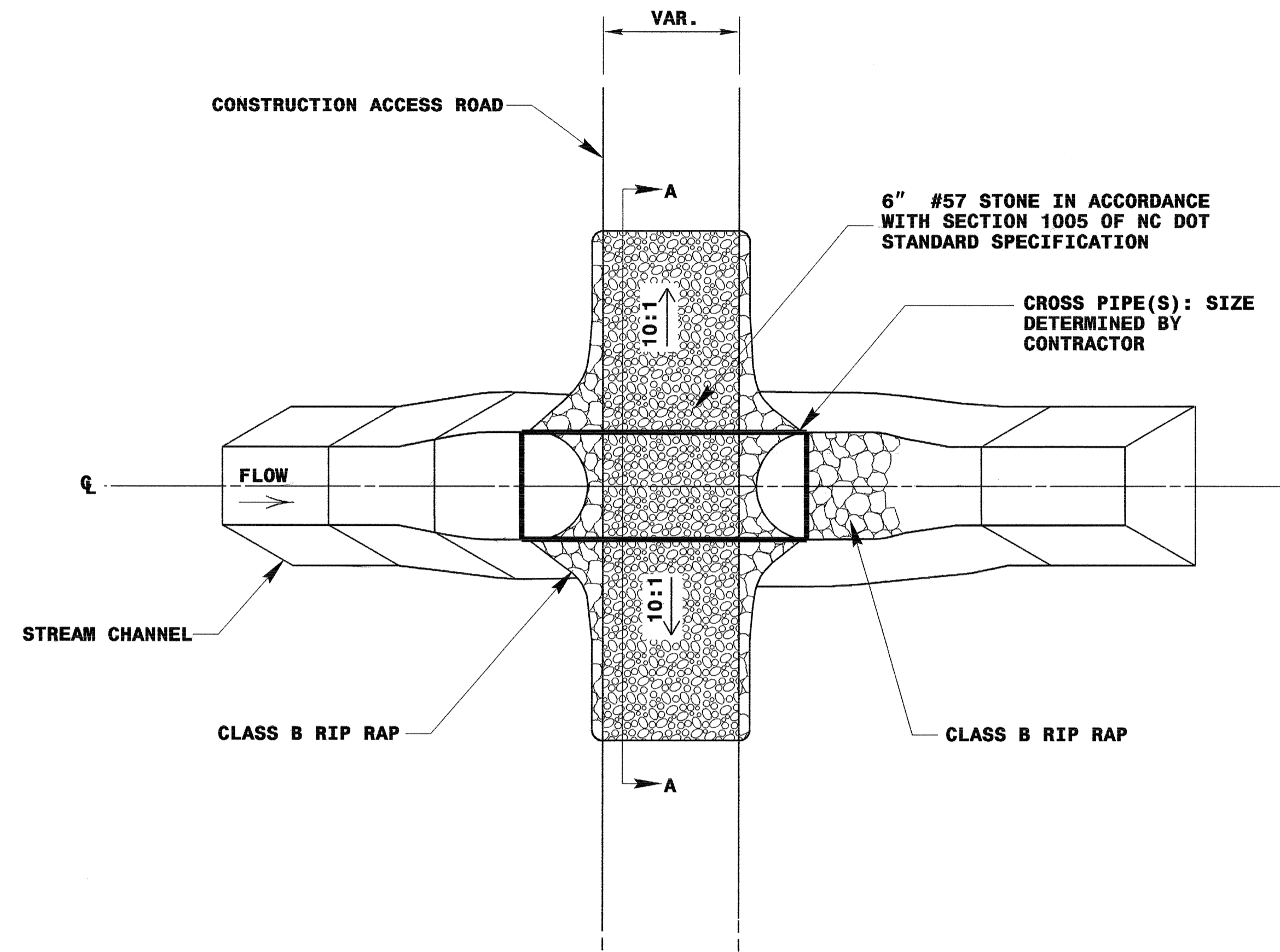
PLAN



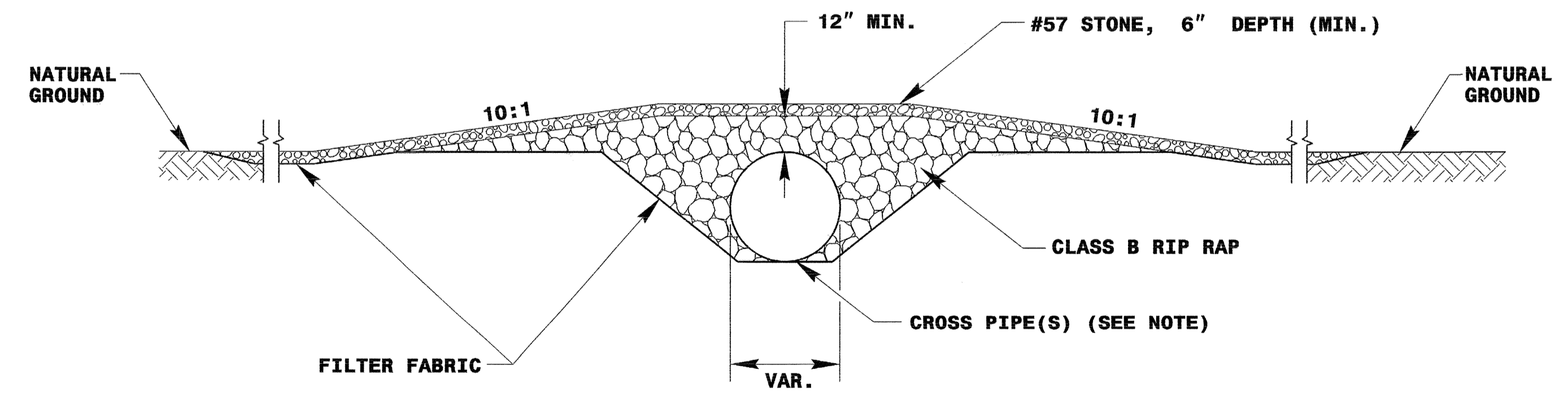
ELEVATION

PROJECT REFERENCE NO. 3000014.3	SHEET NO. EC-2D
RW SHEET NO.	
ROADWAY DESIGN ENGINEER	HYDRAULICS ENGINEER

TEMPORARY STREAM CROSSING



PLAN VIEW



SECTION A-A
NOT TO SCALE

NOTE: PIPE(S) FOR TEMPORARY STREAM CROSSING SHALL BE DESIGNED TO PASS THE PEAK OR BANKFULL FLOW, WHICHEVER IS LESS, FROM A 2-YEAR PEAK STORM, WITHOUT OVER TOPPING.

 ENVIRONMENTALLY SENSITIVE AREA
SEE PROJECT SPECIAL PROVISIONS

NOTE:
PLACE TEMPORARY ROCK SEDIMENT DAMS TYPE - B
AND TEMPORARY ROCK SILT CHECKS TYPE - A AT
DRAINAGE OUTLETS.

CLEARING AND GRUBBING
EROSION CONTROL FOR
CONSTRUCTION SHEET 4

28 x 14 x 3
1.5 inch Skimmer
with 0.5 inch
Orifice Diameter
6 ft. weir
ID 4.2(-Y-)

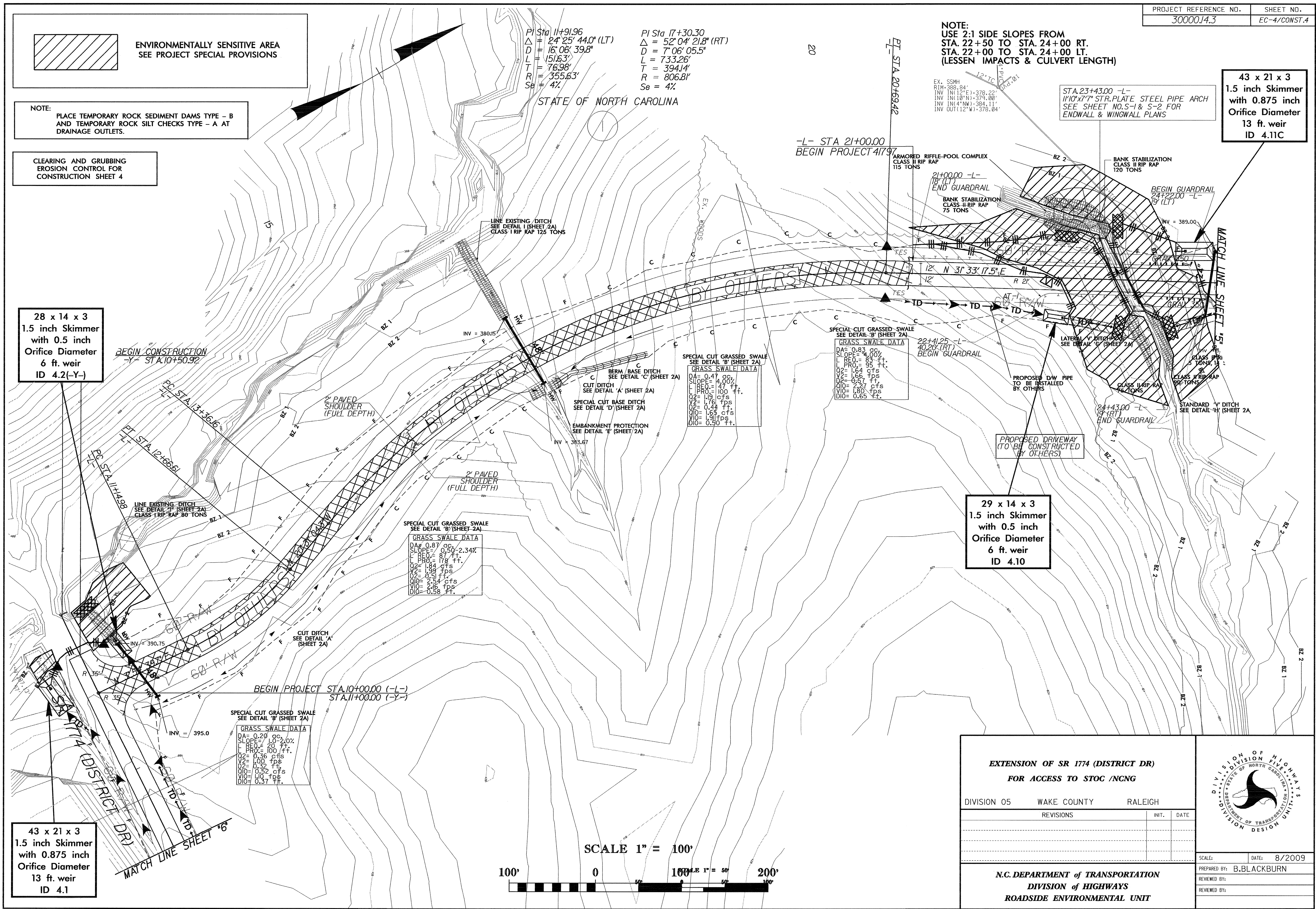
43 x 21 x 3
1.5 inch Skimmer
with 0.875 inch
Orifice Diameter
13 ft. weir
ID 4.11C

NOTE:
USE 2:1 SIDE SLOPES FROM
STA. 22+50 TO STA. 24+00 RT.
STA. 22+00 TO STA. 24+00 LT.
(LESSER IMPACTS & CULVERT LENGTH)

PI Sta 11+91.96
Δ = 24° 25' 44.0" (LT)
D = 16' 08' 39.8"
L = 151.63'
T = 76.98'
R = 355.63'
Se = 4%

PI Sta 17+30.30
Δ = 52° 04' 21.8" (RT)
D = 7' 06' 05.5"
L = 733.26'
T = 394.14'
R = 806.81'
Se = 4%

STATE OF NORTH CAROLINA



BEGIN CONSTRUCTION
-Y- STA. 10+50.92

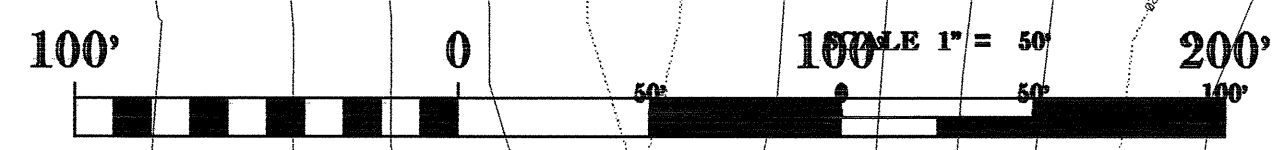
-L- STA 21+00.00
BEGIN PROJECT 41797

BEGIN PROJECT STA. 10+00.00 (-L-)
STA. 11+00.00 (-Y-)

29 x 14 x 3
1.5 inch Skimmer
with 0.5 inch
Orifice Diameter
6 ft. weir
ID 4.10

43 x 21 x 3
1.5 inch Skimmer
with 0.875 inch
Orifice Diameter
13 ft. weir
ID 4.1

SCALE 1" = 100'



EXTENSION OF SR 1774 (DISTRICT DR) FOR ACCESS TO STOC / NCNG		
DIVISION 05	WAKE COUNTY	RALEIGH
REVISIONS	INT.	DATE
N.C. DEPARTMENT of TRANSPORTATION DIVISION of HIGHWAYS ROADSIDE ENVIRONMENTAL UNIT		

DIVISION OF HIGHWAYS
STATE OF NORTH CAROLINA
DEPARTMENT OF TRANSPORTATION
ROADSIDE ENVIRONMENTAL UNIT

SCALE: DATE: 8/2009

PREPARED BY: B. BLACKBURN

REVIEWED BY:

PI Sta 25+32.50
 $\Delta = 11' 43" 09.2" (RT)$
 $D = 8' 34" 23.2"$
 $L = 136.70'$
 $T = 68.59'$
 $R = 668.32'$
 $Se = 4\%$

 ENVIRONMENTALLY SENSITIVE AREA
 SEE PROJECT SPECIAL PROVISIONS

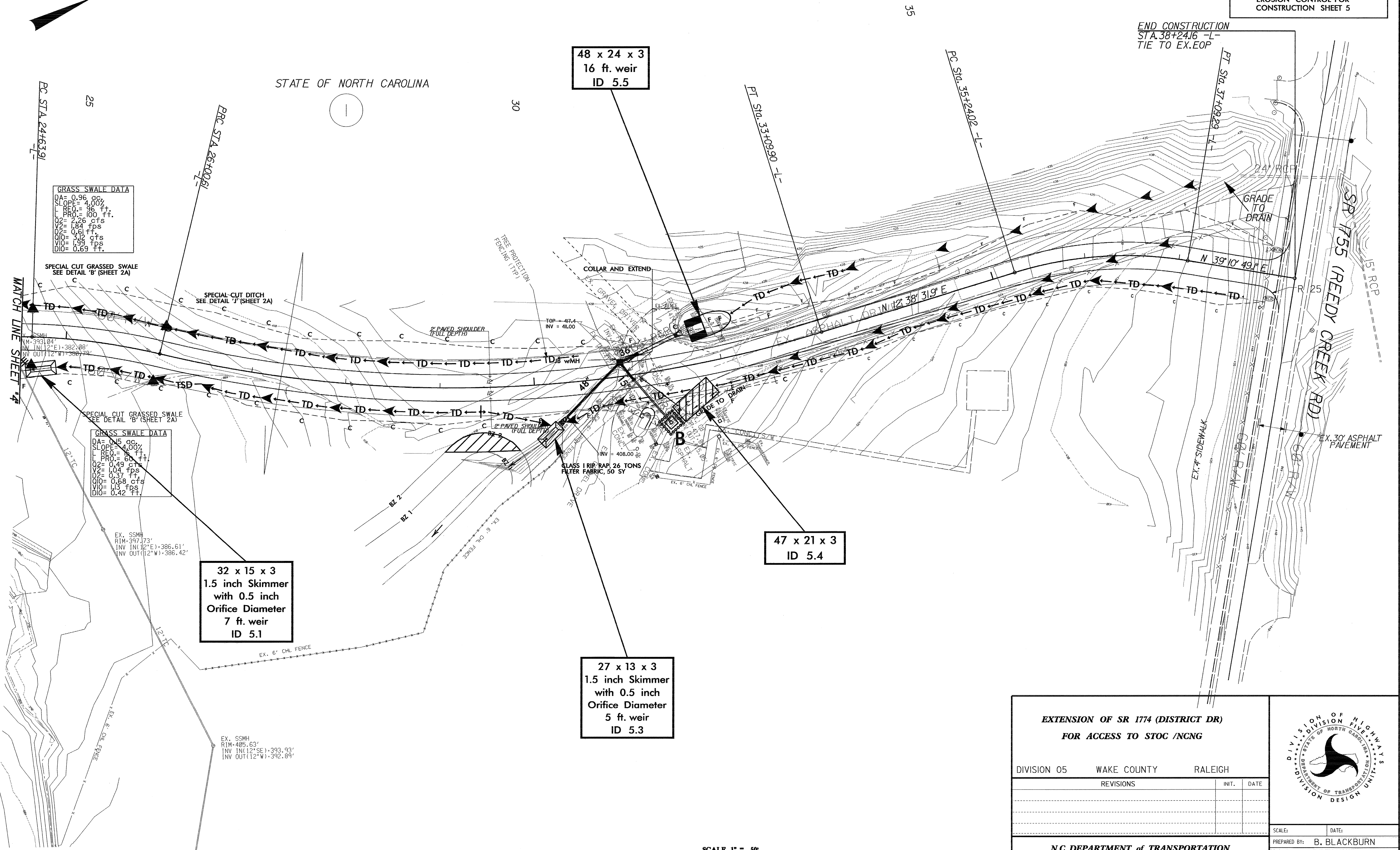
PI Sta 32+05.17
 $\Delta = 9' 03" 53.6" (LT)$
 $D = 4' 19" 07.1"$
 $L = 709.29'$
 $T = 105.17'$
 $R = 1,326.71'$
 $Se = 3\%$

PI Sta 36+18.34
 $\Delta = 26' 32" 17.3" (RT)$
 $D = 14' 19" 26.2"$
 $L = 185.27'$
 $T = 94.33'$
 $R = 400.00'$
 $Se = 4\%$

NOTE:
 PLACE TEMPORARY ROCK SEDIMENT DAMS TYPE - B
 AND TEMPORARY ROCK SILT CHECKS TYPE - A AT
 DRAINAGE OUTLETS.

CLEARING AND GRUBBING
 EROSION CONTROL FOR
 CONSTRUCTION SHEET 5

END CONSTRUCTION
 STA. 38+24.16 -L-
 TIE TO EX.EOP



GRASS SWALE DATA
 DA= 0.96 cc,
 SLOPE= 4.00%
 L PRO= 96 ft.
 L= 100 ft.
 Q2= 2.26 cfs
 Q3= 1.84 cfs
 Q4= 0.61 ft.
 Q10= 3.12 cfs
 Q100= 1.36 cfs
 D10= 0.69 ft.

SPECIAL CUT GRASSSED SWALE
 SEE DETAIL 'B' (SHEET 2A)

SPECIAL CUT DITCH
 SEE DETAIL 'J' (SHEET 2A)

GRASS SWALE DATA
 DA= 0.15 cc,
 SLOPE= 4.00%
 L PRO= 60 ft.
 L= 60 ft.
 Q2= 0.49 cfs
 Q3= 0.37 cfs
 Q4= 0.37 ft.
 Q10= 0.68 cfs
 Q100= 1.13 cfs
 D10= 0.42 ft.

EX. SSMH
 RIM= 397.173'
 INV. IN (12"E)= 386.61'
 INV. OUT (12"W)= 386.42'

32 x 15 x 3
 1.5 inch Skimmer
 with 0.5 inch
 Orifice Diameter
 7 ft. weir
 ID 5.1

27 x 13 x 3
 1.5 inch Skimmer
 with 0.5 inch
 Orifice Diameter
 5 ft. weir
 ID 5.3

47 x 21 x 3
 ID 5.4

48 x 24 x 3
 16 ft. weir
 ID 5.5

MATCH LINE SHEET 4

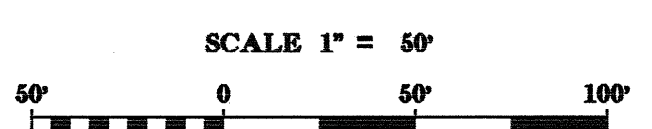
PC STA. 24+63.91

PBC STA. 26+00.61

PI STA. 33+09.90 -L-

PC STA. 35+24.02 -L-

PT STA. 37+09.29 -L-



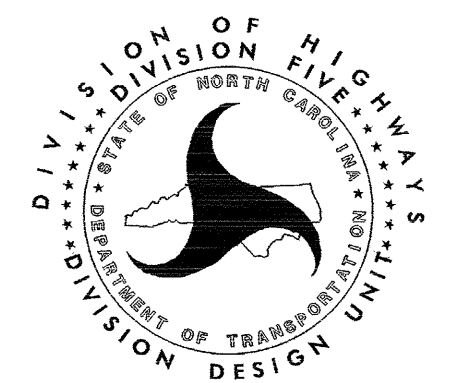
**EXTENSION OF SR 1774 (DISTRICT DR)
 FOR ACCESS TO STOC /NCNG**

DIVISION 05 WAKE COUNTY RALEIGH

REVISIONS	INIT.	DATE

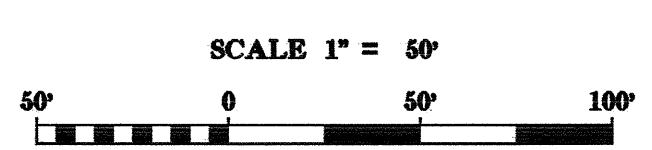
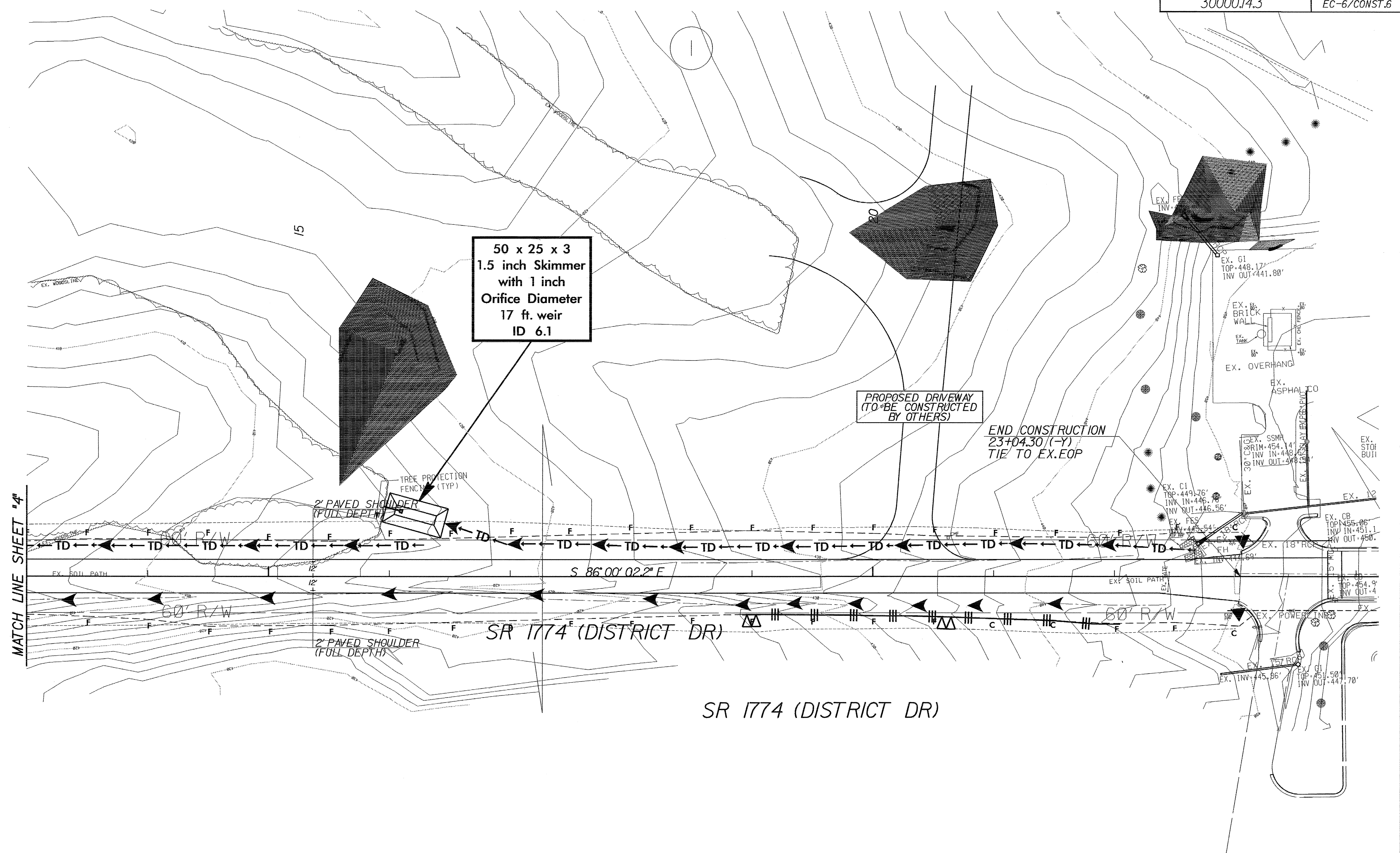
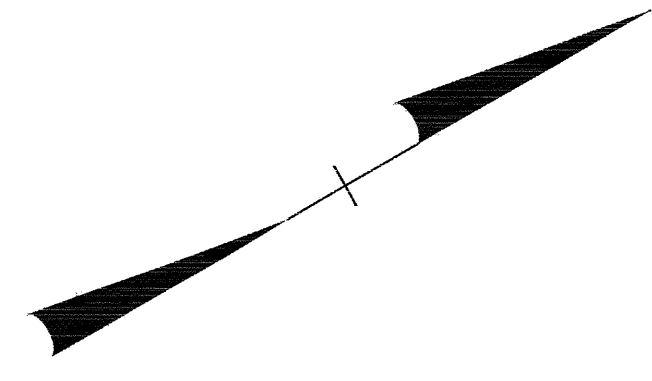
SCALE: DATE:
 PREPARED BY: B. BLACKBURN
 REVIEWED BY:
 REVIEWED BY:

N.C. DEPARTMENT of TRANSPORTATION
 DIVISION of HIGHWAYS
 ROADSIDE ENVIRONMENTAL UNIT



NOTE: PLACE TEMPORARY ROCK SEDIMENT DAMS TYPE - B AND TEMPORARY ROCK SILT CHECKS TYPE - A AT DRAINAGE OUTLETS.

CLEARING AND GRUBBING EROSION CONTROL FOR CONSTRUCTION SHEET 6

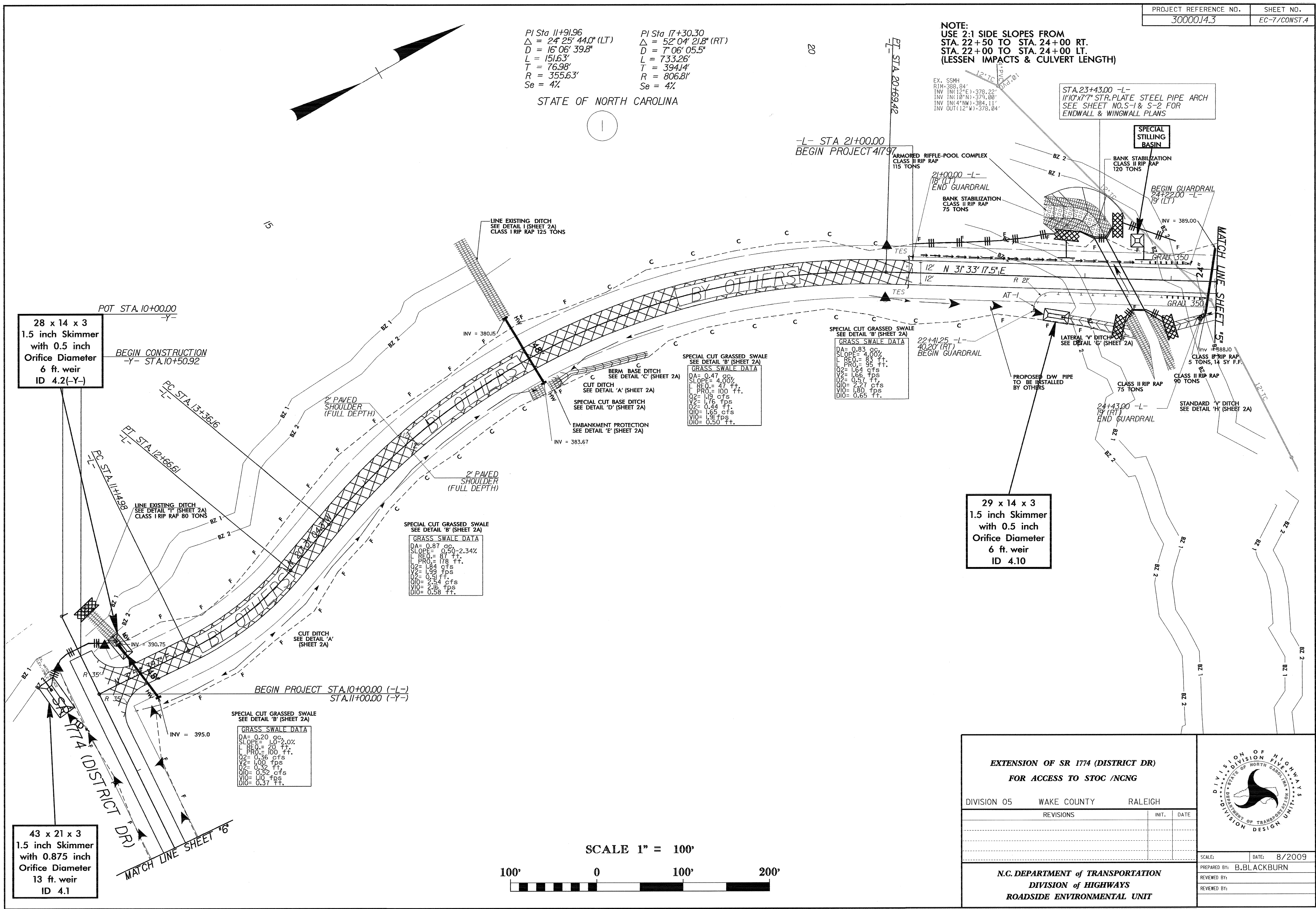


EXTENSION OF SR 1774 (DISTRICT DR) FOR ACCESS TO STOC /NCNG			
DIVISION 05	WAKE COUNTY	RALEIGH	
REVISIONS	INT.	DATE	
N.C. DEPARTMENT of TRANSPORTATION DIVISION of HIGHWAYS ROADSIDE ENVIRONMENTAL UNIT			SCALE: _____ DATE: 10/2008 PREPARED BY: B. BLACKBURN REVIEWED BY: _____ REVIEWED BY: _____

PI Sta 11+91.96 PI Sta 17+30.30
 $\Delta = 24^{\circ} 25' 44.0''$ (LT) $\Delta = 52^{\circ} 04' 21.8''$ (RT)
 $D = 16' 06'' 39.8''$ $D = 7' 06'' 05.5''$
 $L = 151.63'$ $L = 733.26'$
 $T = 76.98'$ $T = 394.14'$
 $R = 355.63'$ $R = 806.81'$
 $Se = 4\%$ $Se = 4\%$

STATE OF NORTH CAROLINA

NOTE:
USE 2:1 SIDE SLOPES FROM STA. 22+50 TO STA. 24+00 RT.
STA. 22+00 TO STA. 24+00 LT.
(LESSEN IMPACTS & CULVERT LENGTH)

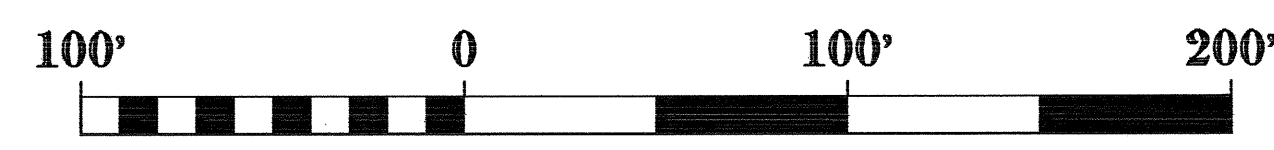


28 x 14 x 3
1.5 inch Skimmer
with 0.5 inch
Orifice Diameter
6 ft. weir
ID 4.2(-Y-)

29 x 14 x 3
1.5 inch Skimmer
with 0.5 inch
Orifice Diameter
6 ft. weir
ID 4.10

43 x 21 x 3
1.5 inch Skimmer
with 0.875 inch
Orifice Diameter
13 ft. weir
ID 4.1

SCALE 1" = 100'



EXTENSION OF SR 1774 (DISTRICT DR) FOR ACCESS TO STOC /NCNG		
DIVISION 05	WAKE COUNTY	RALEIGH
REVISIONS	INT.	DATE
N.C. DEPARTMENT of TRANSPORTATION DIVISION of HIGHWAYS ROADSIDE ENVIRONMENTAL UNIT		

SCALE: DATE: 8/2009

PREPARED BY: B. BLACKBURN

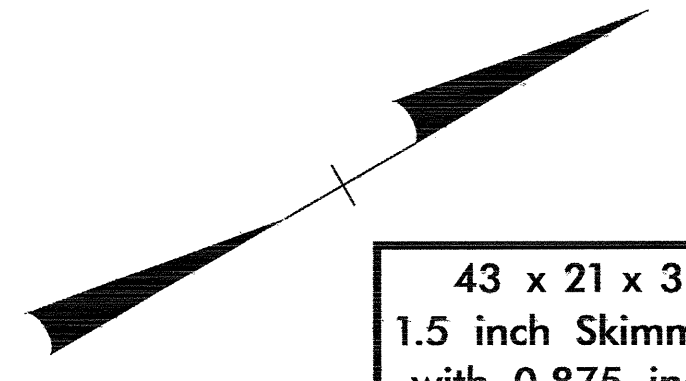
REVIEWED BY:

REVIEWED BY:

PI Sta 25+32.50
 $\Delta = 11^{\circ} 43' 09.2''$ (RT)
 D = 8' 34" 23.2"
 L = 136.70'
 T = 68.59'
 R = 668.32'
 Se = 4%

PI Sta 32+05.17
 $\Delta = 9^{\circ} 03' 53.6''$ (LT)
 D = 4' 19" 07.1"
 L = 709.29'
 T = 105.17'
 R = 1,326.71'
 Se = 3%

PI Sta 36+18.34
 $\Delta = 26^{\circ} 32' 17.3''$ (RT)
 D = 14' 19" 26.2"
 L = 185.27'
 T = 94.33'
 R = 400.00'
 Se = 4%



43 x 21 x 3
 1.5 inch Skimmer
 with 0.875 inch
 Orifice Diameter
 13 ft. weir
 ID 5.2F

48 x 24 x 3
 16 ft. weir
 ID 5.5

47 x 21 x 3
 ID 5.4

32 x 15 x 3
 1.5 inch Skimmer
 with 0.5 inch
 Orifice Diameter
 7 ft. weir
 ID 5.1

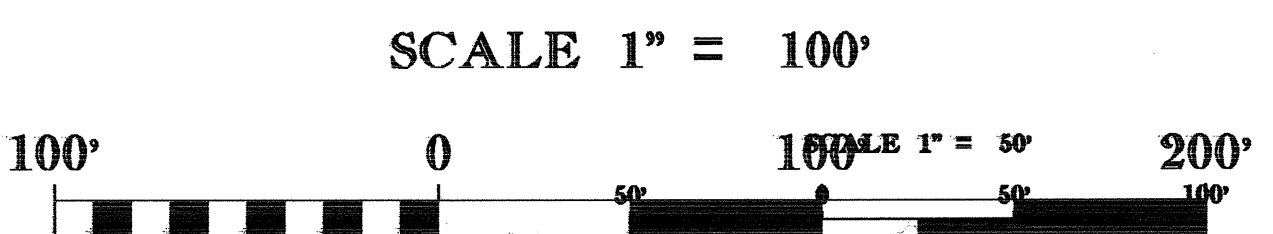
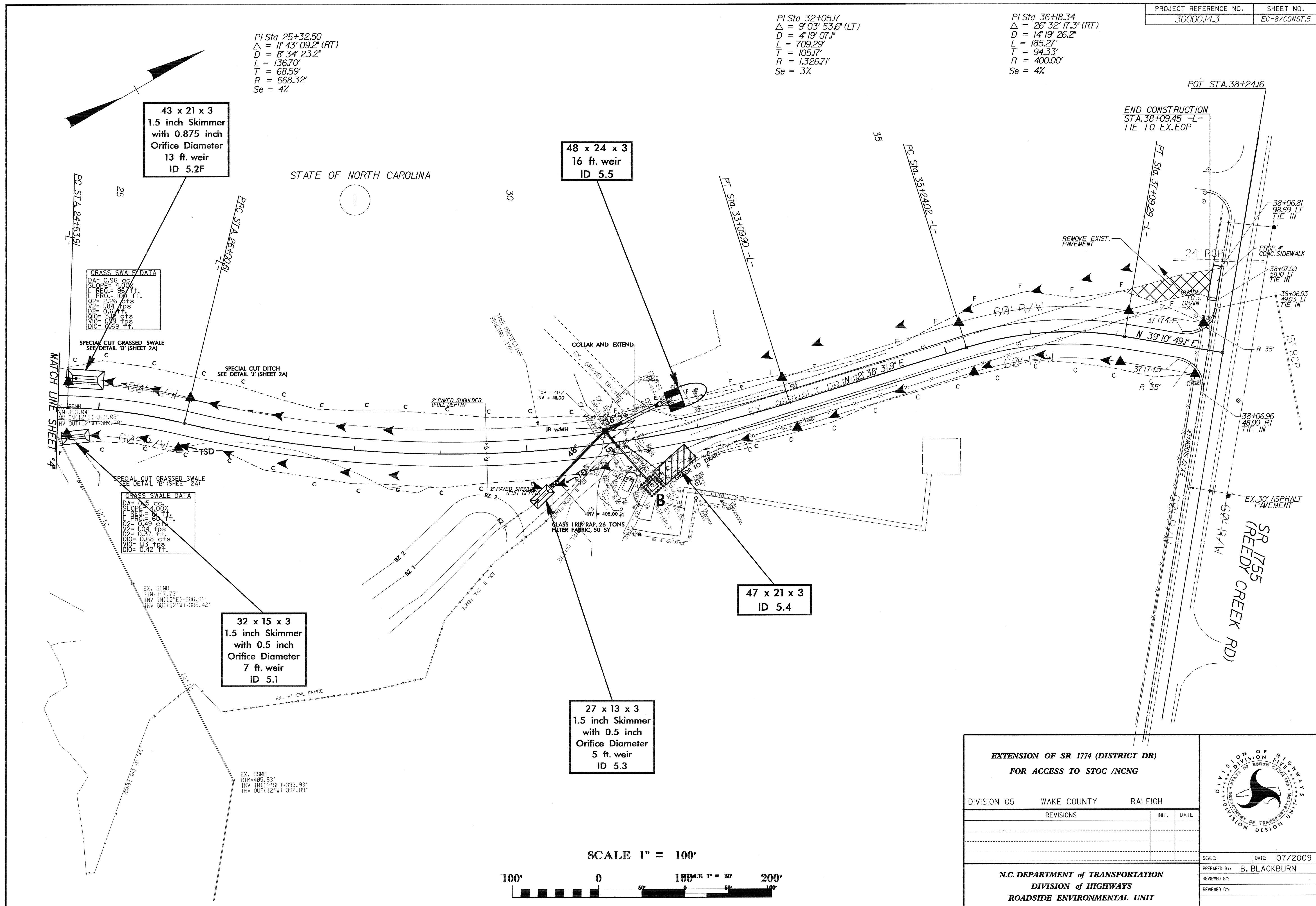
27 x 13 x 3
 1.5 inch Skimmer
 with 0.5 inch
 Orifice Diameter
 5 ft. weir
 ID 5.3

GRASS SWALE DATA
 DA = 0.96 ac
 SLOPE = 4.00%
 L REQ = 96 ft.
 PRO = 100 ft.
 Q2 = 2.26 cfs
 V2 = 1.84 fps
 Q10 = 0.67 cfs
 V10 = 3.12 cfs
 Q100 = 1.99 cfs
 D10 = 0.69 ft.

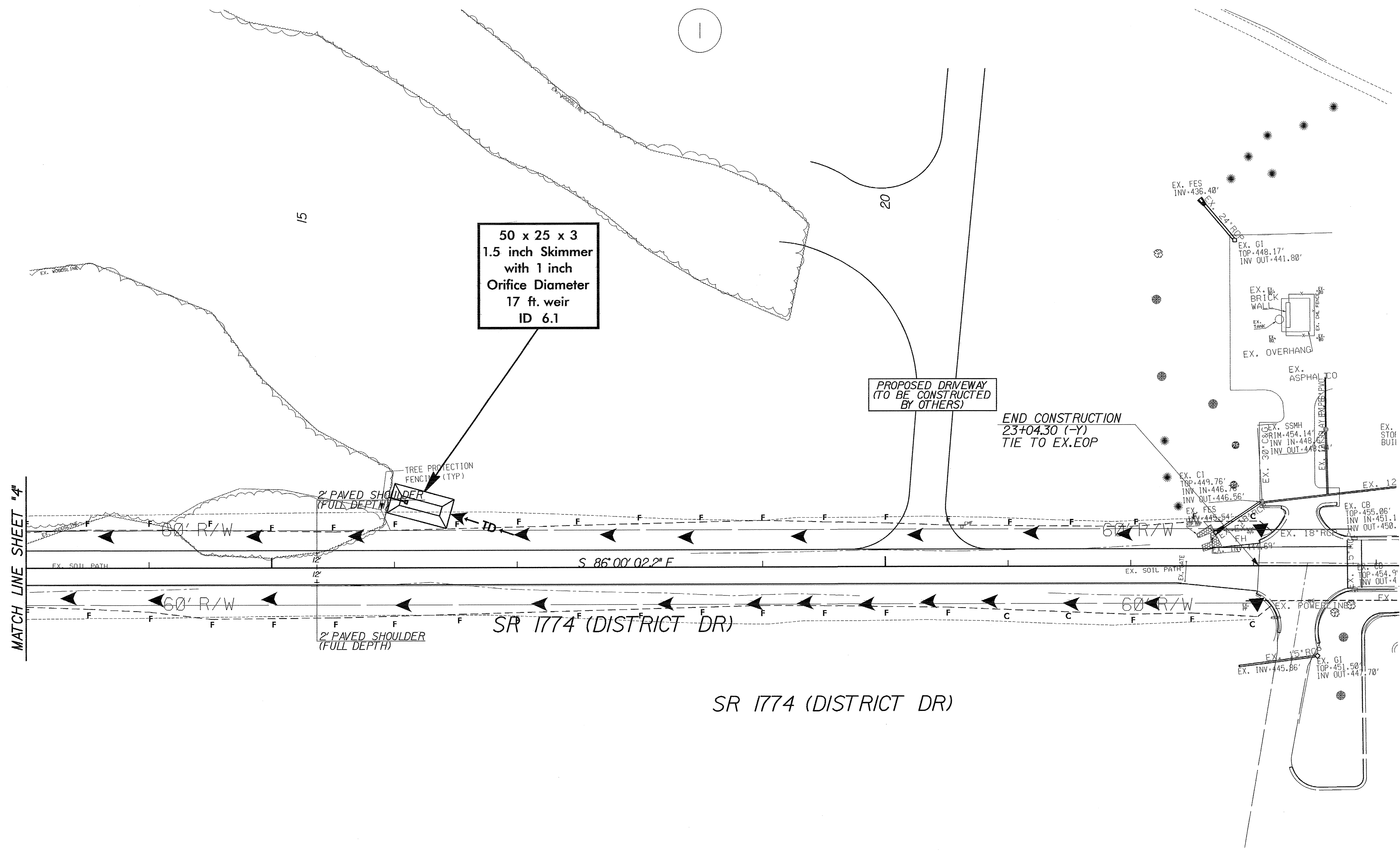
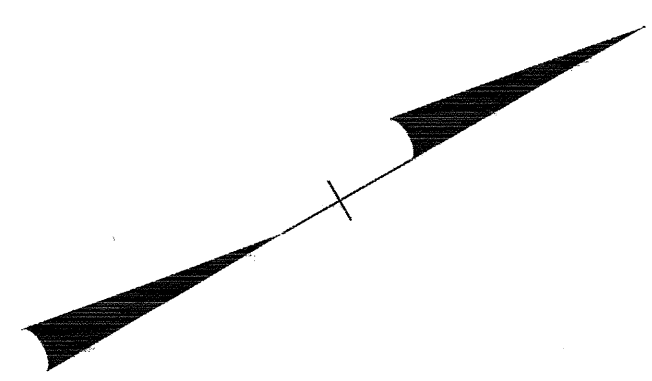
GRASS SWALE DATA
 DA = 0.15 ac
 SLOPE = 4.00%
 L REQ = 60 ft.
 PRO = 75 ft.
 Q2 = 0.49 cfs
 V2 = 1.04 fps
 Q10 = 0.37 cfs
 V10 = 1.15 cfs
 Q100 = 0.42 ft.

MATCH LINE SHEET 4

POT STA 38+24.16
 END CONSTRUCTION
 STA 38+09.45 -L-
 TIE TO EX.EOP



EXTENSION OF SR 1774 (DISTRICT DR) FOR ACCESS TO STOC /NCNG			
DIVISION 05	WAKE COUNTY	RALEIGH	
REVISIONS	INT.	DATE	SCALE: _____ DATE: 07/2009 PREPARED BY: B. BLACKBURN REVIEWED BY: _____ REVIEWED BY: _____
N.C. DEPARTMENT of TRANSPORTATION DIVISION of HIGHWAYS ROADSIDE ENVIRONMENTAL UNIT			



50 x 25 x 3
1.5 inch Skimmer
with 1 inch
Orifice Diameter
17 ft. weir
ID 6.1

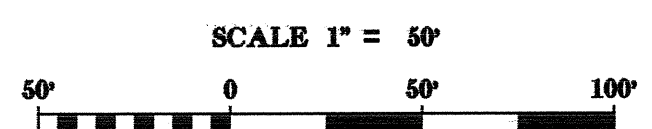
PROPOSED DRIVEWAY
(TO BE CONSTRUCTED
BY OTHERS)

END CONSTRUCTION
23+04.30 (-Y)
TIE TO EX.EOP

MATCH LINE SHEET "4"

SR 1774 (DISTRICT DR)

SR 1774 (DISTRICT DR)



EXTENSION OF SR 1774 (DISTRICT DR) FOR ACCESS TO STOC /NCNG			
DIVISION 05	WAKE COUNTY	RALEIGH	
REVISIONS	INT.	DATE	
N.C. DEPARTMENT of TRANSPORTATION DIVISION of HIGHWAYS ROADSIDE ENVIRONMENTAL UNIT			SCALE: DATE: 10/2008 PREPARED BY: B. BLACKBURN REVIEWED BY: REVIEWED BY: