

09/08/99

TIP PROJECT: B-4261

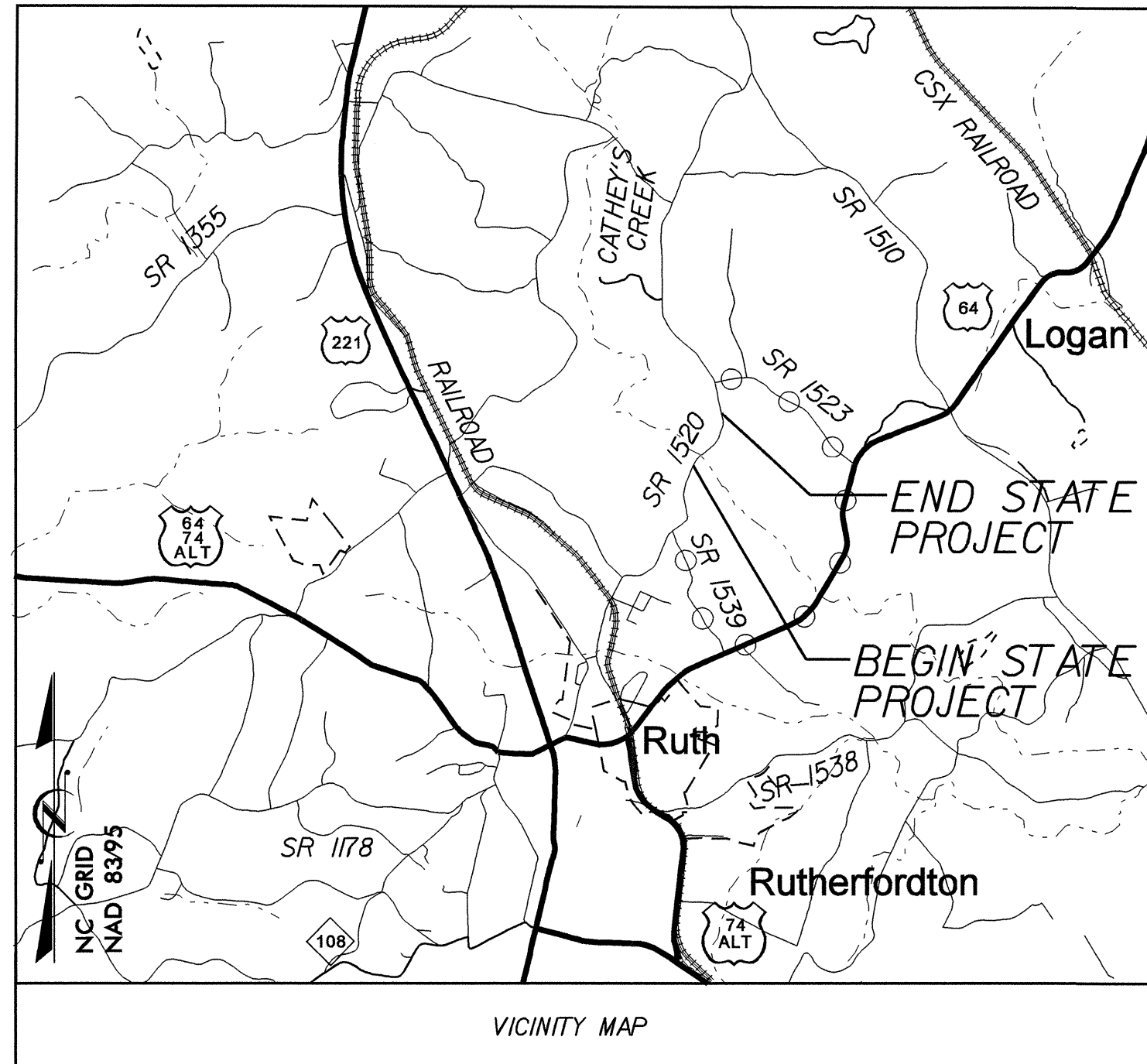
T.I.P. NO.	SHEET NO.
B-4261	UO-1

STATE OF NORTH CAROLINA  
DIVISION OF HIGHWAYS

UTILITY BY OTHERS PLANS  
RUTHERFORD COUNTY

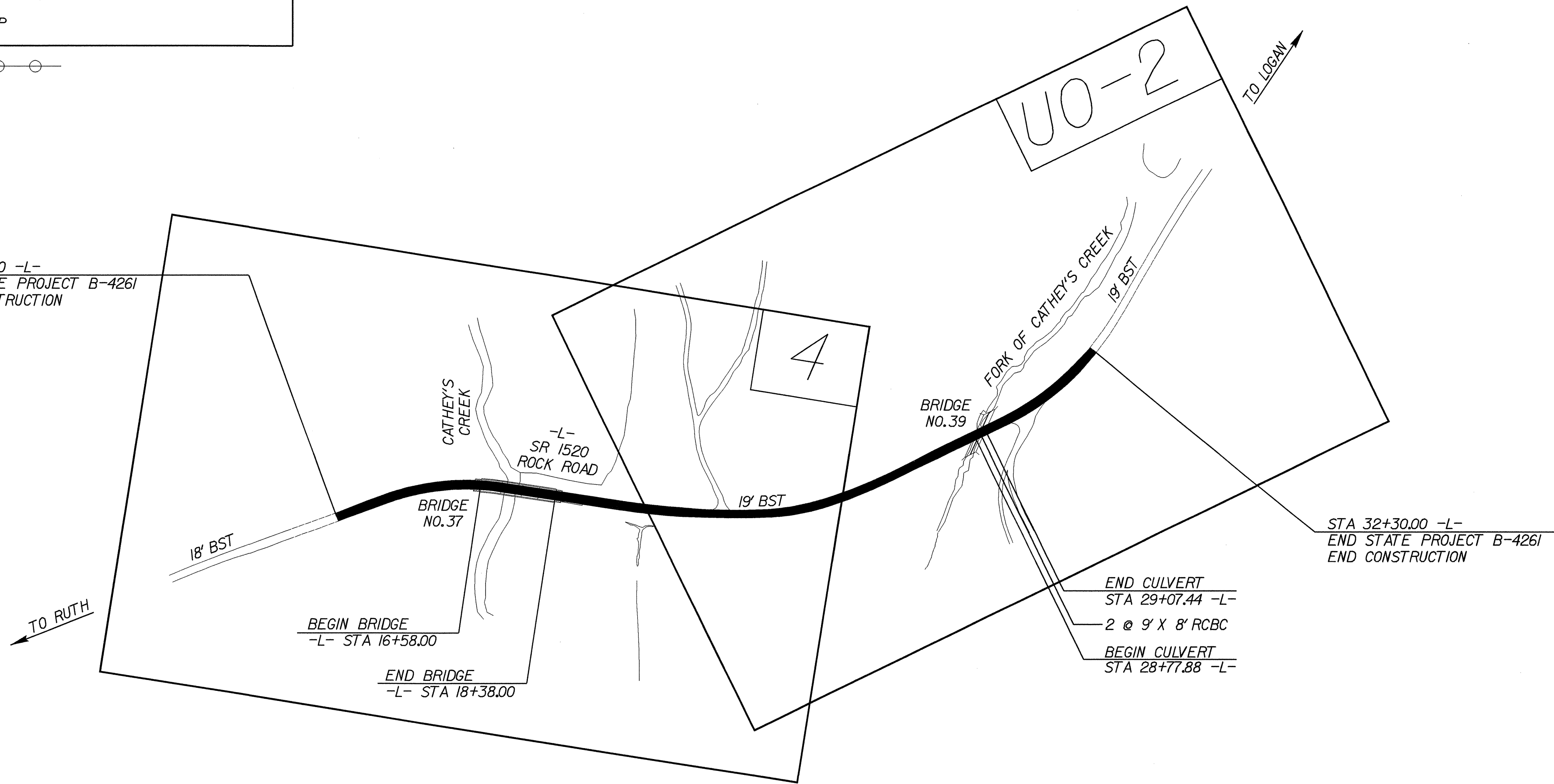
LOCATION: BRIDGE NO. 37 OVER CATHEY'S CREEK AND BRIDGE NO. 39  
OVER THE FORK OF CATHEY'S CREEK ON SR 1520

TYPE OF WORK: UTILITY BY OTHERS



OFF-SITE DETOUR ROUTE ○ ○ ○ ○

STA 13+03.00 -L-  
BEGIN STATE PROJECT B-4261  
BEGIN CONSTRUCTION

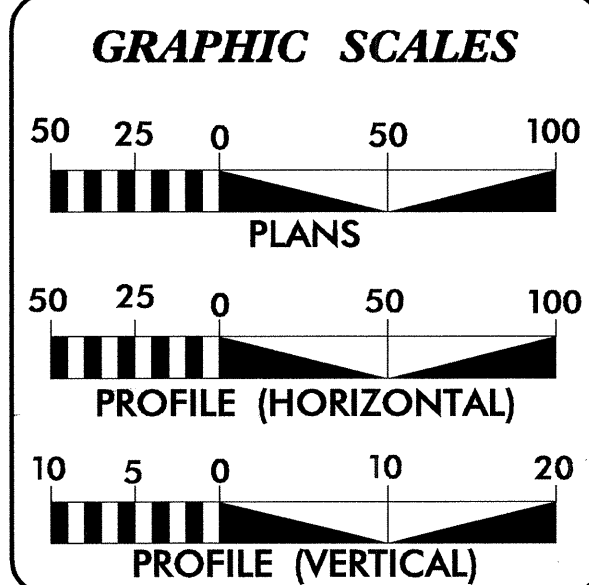


STA 32+30.00 -L-  
END STATE PROJECT B-4261  
END CONSTRUCTION

END CULVERT  
STA 29+07.44 -L-

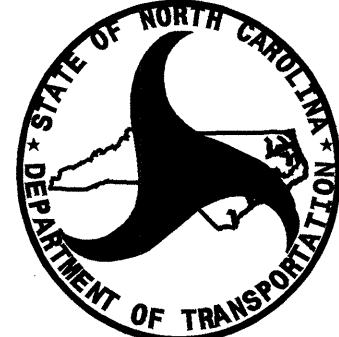
2 @ 9' X 8' RCBC

BEGIN CULVERT  
STA 28+77.88 -L-



INDEX OF SHEETS	
SHEET NO.	DESCRIPTION
UO-1	TITLE SHEET
UO-2	UTILITY BY OTHERS PLAN SHEET

UTILITY OWNERS ON PROJECT	
(1)	A T & T - TELEPHONE


 PREPARED IN THE OFFICE OF:  
**DIVISION OF HIGHWAYS**  
**UTILITY ENGINEERING SECTION**  
 1591 MAIL SERVICES CENTER  
 RALEIGH, NC 27699-1591  
 PHONE (919) 250-4128  
 FAX (919) 250-4119

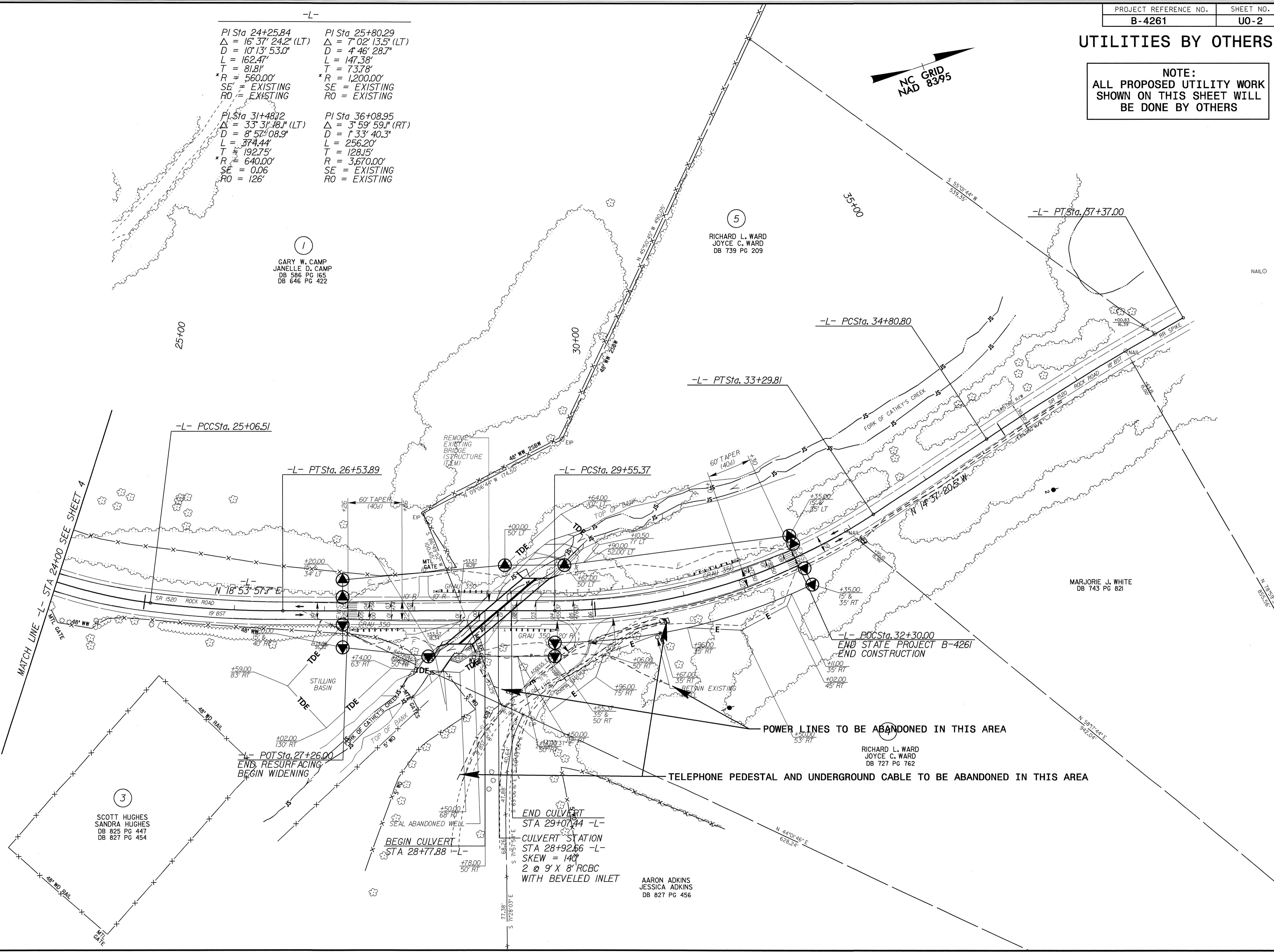
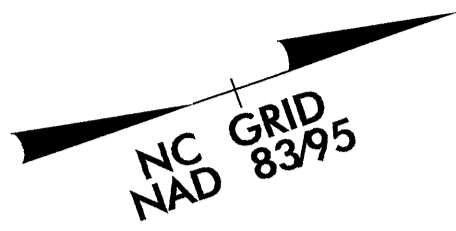
**Roger Worthington, P.E.** UTILITIES SECTION ENGINEER  
**R. B. Wilkins, P.E.** UTILITIES SQUAD LEADER PROJECT ENGINEER  
**John Nigro, P.E.** UTILITIES PROJECT DESIGNER

23-SEP-2008 07:44  
F:\Utilities\rdy\_ut\proj\b-4261\ut\_title\_uo1.psh.dgn  
\$\$\$\$\$USERNAME\$\$\$\$\$

### UTILITIES BY OTHERS

NOTE:  
ALL PROPOSED UTILITY WORK  
SHOWN ON THIS SHEET WILL  
BE DONE BY OTHERS

<p>PI Sta 24+25.84  <math>\Delta = 16^{\circ} 37' 24.2"</math> (LT)  <math>D = 10^{\circ} 13' 53.0"</math>  <math>L = 162.47'</math>  <math>T = 81.81'</math>  <math>*R = 560.00'</math>  <math>SE = \text{EXISTING}</math>  <math>RO = \text{EXISTING}</math></p>	<p>PI Sta 25+80.29  <math>\Delta = 7^{\circ} 02' 13.5"</math> (LT)  <math>D = 4^{\circ} 46' 28.7"</math>  <math>L = 147.38'</math>  <math>T = 73.78'</math>  <math>*R = 1,200.00'</math>  <math>SE = \text{EXISTING}</math>  <math>RO = \text{EXISTING}</math></p>
<p>PI Sta 31+48.72  <math>\Delta = 33^{\circ} 31' 18.1"</math> (LT)  <math>D = 8^{\circ} 57' 08.9"</math>  <math>L = 374.44'</math>  <math>T = 192.75'</math>  <math>*R = 640.00'</math>  <math>SE = 0.06'</math>  <math>RO = 126'</math></p>	<p>PI Sta 36+08.95  <math>\Delta = 3^{\circ} 59' 59.1"</math> (RT)  <math>D = 1^{\circ} 33' 40.3"</math>  <math>L = 256.20'</math>  <math>T = 128.15'</math>  <math>R = 3,670.00'</math>  <math>SE = \text{EXISTING}</math>  <math>RO = \text{EXISTING}</math></p>



(1)  
GARY W. CAMP  
JANELLE D. CAMP  
DB 586 PG 165  
DB 646 PG 422

(5)  
RICHARD L. WARD  
JOYCE C. WARD  
DB 739 PG 209

MARJORIE J. WHITE  
DB 743 PG 821

(3)  
SCOTT HUGHES  
SANDRA HUGHES  
DB 825 PG 447  
DB 827 PG 454

END CULVERT  
STA 29+07.44 -L-  
CULVERT STATION  
STA 28+92.66 -L-  
SKEW = 140°  
2 @ 9' X 8' RCBC  
WITH BEVELED INLET

AARON ADKINS  
JESSICA ADKINS  
DB 827 PG 456

POWER LINES TO BE ABANDONED IN THIS AREA

TELEPHONE PEDESTAL AND UNDERGROUND CABLE TO BE ABANDONED IN THIS AREA

5/14/99  
 04-AUG-2008 08:17  
 r:\utilities\chad\proj\B-4261.ut\_5.uo2.psh.dgn