

STATE OF NORTH CAROLINA
DIVISION OF HIGHWAYS

STATE PROJECT REFERENCE NO.	SHEET NO.
B-3654	TCP-01

**PLAN FOR PROPOSED
TRAFFIC CONTROL, MARKING & DELINEATION
HARNETT/SAMPSON COUNTY**

B-3654

ROADWAY STANDARD DRAWINGS

THE FOLLOWING ROADWAY STANDARDS AS APPEAR IN "ROADWAY STANDARD DRAWINGS"- PROJECT SERVICES UNIT-N.C. DEPARTMENT OF TRANSPORTATION-RALEIGH, N.C., DATED JULY 2006 ARE APPLICABLE TO THIS PROJECT AND BY REFERENCE HEREBY ARE CONSIDERED A PART OF THESE PLANS:

STD. NO.	TITLE
1101.02	TEMPORARY LANE CLOSURES
1101.05	WORK ZONE VEHICLE ACCESSES
1101.11	TRAFFIC CONTROL DESIGN TABLES
1110.01	STATIONARY WORK ZONE SIGNS
1110.02	PORTABLE WORK ZONE SIGNS
1130.01	DRUMS
1135.01	CONES
1145.01	BARRICADES
1150.01	FLAGGING DEVICES
1205.01	PAVEMENT MARKINGS - LINE TYPES AND OFFSETS
1205.02	PAVEMENT MARKINGS - 2 LANE & MULTILANE ROADWAYS
1205.12	PAVEMENT MARKINGS - BRIDGES
1250.01	PAVEMENT MARKER SPACING
1251.01	RAISED PAVEMENT MARKERS - (TEMPORARY AND PERMANENT)
1261.01	GUARDRAIL AND BARRIER DELINEATOR SPACING
1261.02	GUARDRAIL AND BARRIER DELINEATOR TYPES
1262.01	GUARDRAIL END DELINEATION

INDEX OF SHEETS

SHEET NO.	TITLE
TCP-01	LIST OF APPLICABLE ROADWAY STANDARD DRAWINGS, LEGEND, INDEX OF SHEETS AND TEMPORARY PAVEMENT MARKING/MARKER SCHEDULE
TCP-02	GENERAL NOTES
TCP-03	PHASING AND LOCAL NOTE
TCP-03A	SECTION VIEW - PHASE II
TCP-04	ADVANCE WORK ZONE WARNING SIGNS

LEGEND

- GENERAL**
- DIRECTION OF TRAFFIC FLOW
 - NORTH ARROW
 - PROPOSED PVMT. EXIST. PVMT.
 - WORK AREA
 - REMOVAL OF EXISTING PAVEMENT

TRAFFIC CONTROL DEVICES

- TYPE I BARRICADE
- TYPE II BARRICADE
- TYPE III BARRICADE
- CONE
- DRUM
- FLASHING ARROW PANEL (TYPE C)
- TYPE 'B' WARNING LIGHT
- STATIONARY SIGN
- PORTABLE SIGN
- STATIONARY OR PORTABLE SIGN
- CRASH CUSHION
- CHANGEABLE MESSAGE SIGN
- TRUCK MOUNTED IMPACT ATTENUATOR (TMIA)
- POLICE
- FLAGGER

PAVEMENT MARKINGS

- CRYSTAL/CRYSTAL PAVEMENT MARKER
- YELLOW/YELLOW PAVEMENT MARKER
- CRYSTAL/RED PAVEMENT MARKER
- PAVEMENT MARKING SYMBOLS

TEMPORARY PAVEMENT MARKING/MARKER SCHEDULE

DESCRIPTION	QUANTITY BREAKDOWN	TOTAL QUANTITY
	PAINT (4")	
PA WHITE EDGELINE	10300 LF	
PI YELLOW DOUBLE CENTER LINE	13860 LF	24160 LF
	TEMPORARY RAISED PAVEMENT MARKERS	
MH YELLOW & YELLOW	180 EA	180 EA

APPROVED:
DATE: September 2, 2009

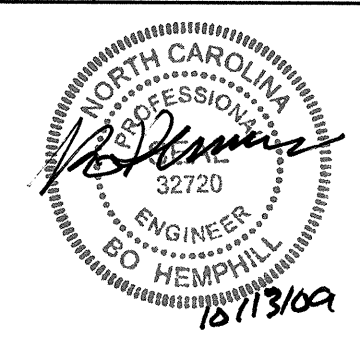
SEAL



PLAN PREPARED BY: N.C.D.O.T. WORK ZONE TRAFFIC CONTROL UNIT

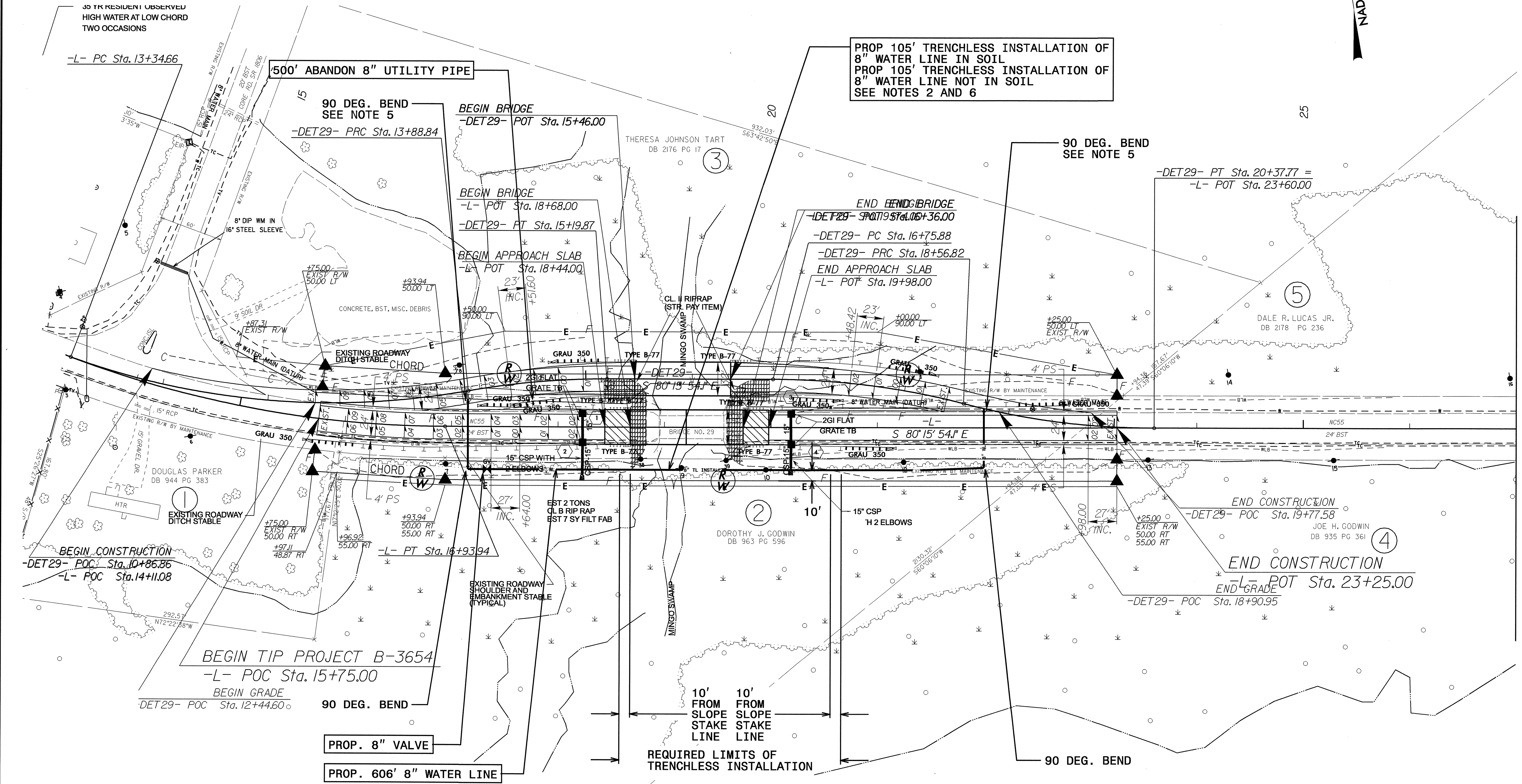
STUART BOURNE, P.E. TRAFFIC CONTROL ENGINEER
J. STEVE KITE, P.E. TRAFFIC CONTROL PROJECT ENGINEER
DON PARKER TRAFFIC CONTROL PROJECT DESIGN ENGINEER
ASHVIN PATEL, P.E. TRAFFIC CONTROL DESIGN ENGINEER / TECHNICIAN

TIP PROJECT:

PROJECT REFERENCE NO.	SHEET NO.
B-3654	UC-2
DESIGNED BY: BH	
DRAWN BY: BH	
CHECKED BY: CAB	
APPROVED BY: CAB	
REVISER:	
NORTH CAROLINA DEPARTMENT OF TRANSPORTATION	
UTILITIES ENGINEERING SEC. PHONE: (919) 250-4128 FAX: (919) 250-4119	UTILITY CONSTRUCTION PLANS ONLY

UTILITY CONSTRUCTION

NAD 83



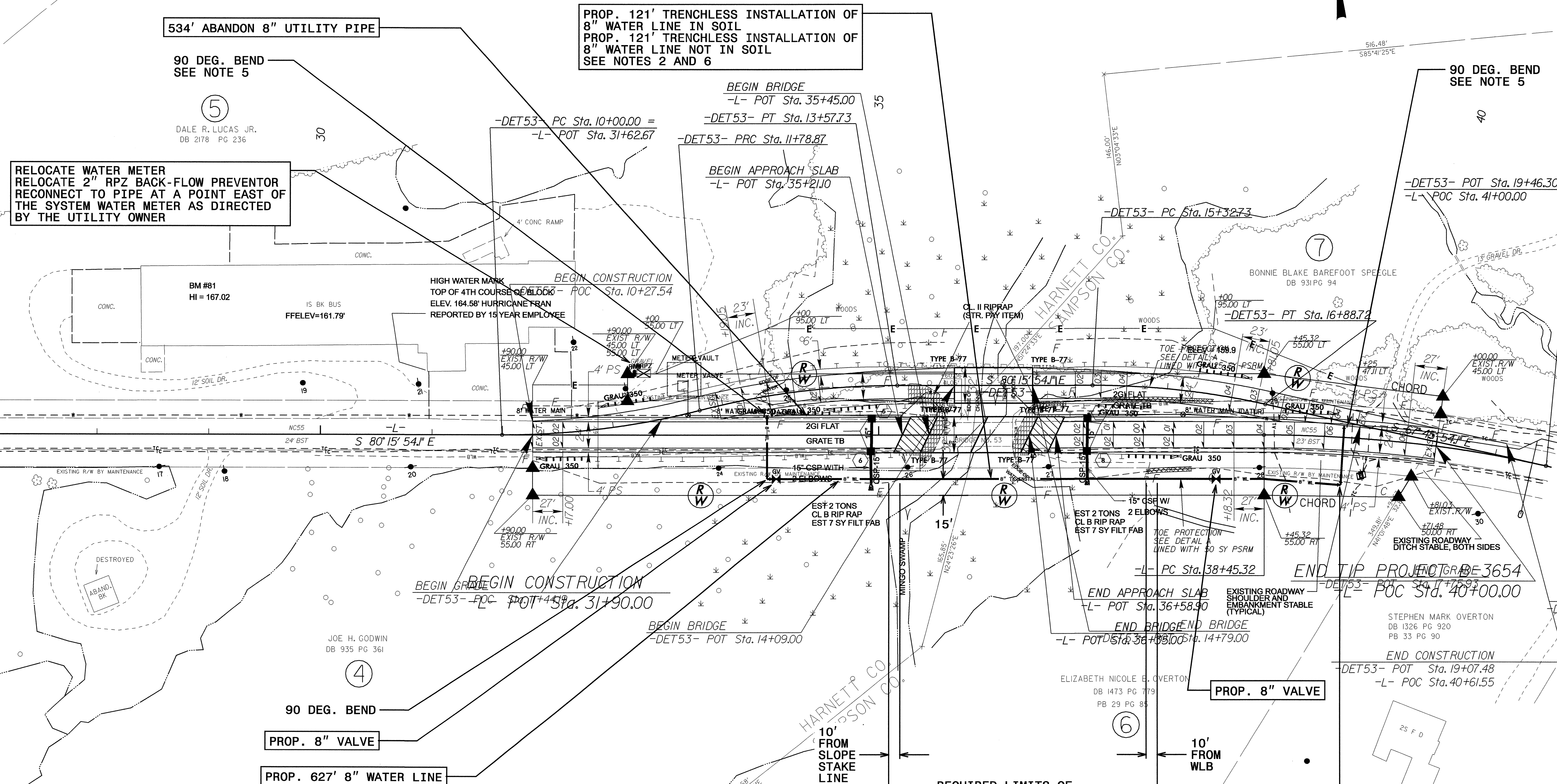
MATCHLINE -L- STA. 27+00.00 SEE SHEET UC-3

5/14/09
08-OCT-2009 16:15 Nb3654_ut_04_uc02.psh.dgn

PROJECT REFERENCE NO.	SHEET NO.
B-3654	UC-3
DESIGNED BY: BH	
DRAWN BY: BH	
CHECKED BY: CAB	
APPROVED BY: CAB	
REVISID:	
NORTH CAROLINA DEPARTMENT OF TRANSPORTATION UTILITIES ENGINEERING SEC. PHONE: (919) 250-4128 FAX: (919) 250-4119	
UTILITY CONSTRUCTION PLANS ONLY	

UTILITY CONSTRUCTION

MATCHLINE -L- STA. 27+00.00 SEE SHEET UC-2



PROP. 121' TRENCHLESS INSTALLATION OF 8" WATER LINE IN SOIL
 PROP. 121' TRENCHLESS INSTALLATION OF 8" WATER LINE NOT IN SOIL
 SEE NOTES 2 AND 6

RELOCATE WATER METER
 RELOCATE 2" RPZ BACK-FLOW PREVENTOR
 RECONNECT TO PIPE AT A POINT EAST OF THE SYSTEM WATER METER AS DIRECTED BY THE UTILITY OWNER

534' ABANDON 8" UTILITY PIPE

90 DEG. BEND
 SEE NOTE 5

DALE R. LUCAS JR.
 DB 2178 PG 236

BM #81
 HI = 167.02

HIGH WATER MARK
 TOP OF 4TH COURSE OF BLOCK
 ELEV. 164.58' HURRICANE FRAN
 REPORTED BY 15 YEAR EMPLOYEE

BEGIN CONSTRUCTION
 -L- POT Sta. 10+27.54

BEGIN BRIDGE
 -L- POT Sta. 35+45.00

BEGIN APPROACH SLAB
 -L- POT Sta. 35+21.10

-DET53- PC Sta. 10+00.00 =
 -L- POT Sta. 31+62.67

-DET53- PT Sta. 11+78.87

-DET53- PC Sta. 15+32.73

-DET53- POT Sta. 19+46.30 =
 -L- POC Sta. 41+00.00

-DET53- PT Sta. 16+88.72

BEGIN CONSTRUCTION
 -L- POT Sta. 31+90.00

BEGIN BRIDGE
 -L- POT Sta. 14+09.00

END APPROACH SLAB
 -L- POT Sta. 36+58.90

END BRIDGE
 -L- POT Sta. 38+88.00

END TIP PROJECT
 -L- POC Sta. 40+00.00

STEPHEN MARK OVERTON
 DB 1326 PG 920
 PB 33 PG 90

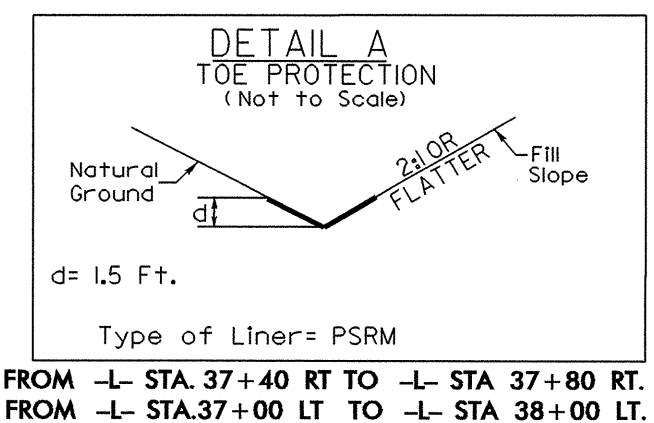
END CONSTRUCTION
 -DET53- POT Sta. 19+07.48
 -L- POC Sta. 40+61.55

PROP. 8" VALVE

PROP. 627' 8" WATER LINE

PROP. 8" VALVE

90 DEG. BEND



5/14/99

08-OCT-2009 16:15 Nb3654-ut_05.uc03-psm.dgn

5/14/99

PROJECT REFERENCE NO.	SHEET NO.
B-3654	UC-4
DESIGNED BY: BH	
DRAWN BY: BH	
CHECKED BY: CAB	
APPROVED BY: CAB	
REVISED:	
NORTH CAROLINA DEPARTMENT OF TRANSPORTATION UTILITIES ENGINEERING SEC. PHONE: (919) 250-4128 FAX: (919) 250-4119	
UTILITY CONSTRUCTION PLANS ONLY	

UTILITY CONSTRUCTION

MAXIMUM TRENCH WIDTH AT TOP OF PIPE			
NOMINAL PIPE SIZE (INCHES)	TRENCH WIDTH (INCHES)	NOMINAL PIPE SIZE (INCHES)	TRENCH WIDTH (INCHES)
4	28	20	44
6	30	24	48
8	32	30	54
10	34	36	60
12	36	42	66
14	38	48	72
16	40	54	78
18	42		

NOTES:

1. ALL WATER LINES SHOWN ARE OWNED BY SAMPSON COUNTY.
2. THE MINIMUM REQUIRED REGIONS OF TRENCHLESS INSTALLATION ARE SHOWN ON THE PLANS. ADDITIONAL LENGTH OF TRENCHLESS INSTALLATION REQUIRED FOR THE CONSTRUCTION METHOD CHOSEN BY THE CONTRACTOR WILL BE CONSIDERED INCIDENTAL TO THE TRENCHLESS INSTALLATION.
3. THE INNER DIAMETER OF PIPE USED FOR THE TRENCHLESS INSTALLATION SHALL BE AT LEAST AS LARGE AS THE INNER DIAMETER OF THE PIPE TO WHICH IT IS CONNECTED.
4. THE PIPE SHALL BE INSTALLED AT LEAST 3' BELOW THE STREAM BOTTOM. HOWEVER, THE PIPE MAY BE DEEPER AS REQUIRED FOR THE PARTICULAR METHOD OF INSTALLATION CHOSEN.
5. ALL TIE-INS TO EXISTING PIPE SHALL BE MADE USING 90 DEGREE ELBOWS.
6. THE CONTRACTOR'S ATTENTION IS DIRECTED TO SECTIONS 102 AND 1550 OF THE STANDARD SPECIFICATIONS CONCERNING THE TRENCHLESS INSTALLATION. NO DAMAGE IS ALLOWED TO THE WETLAND OR STREAM BY THE TRENCHLESS INSTALLATION. THE CONTRACTOR'S ENGINEER SHALL DESIGN THE INSTALLATION METHOD AND PROVIDE ON-SITE OVERSIGHT.

08-OCT-2009 16:14
I:\projects\leg\rd\ut\proj\b3654\ut\ut.dgn

09/28/09

TIP PROJECT: B-3654

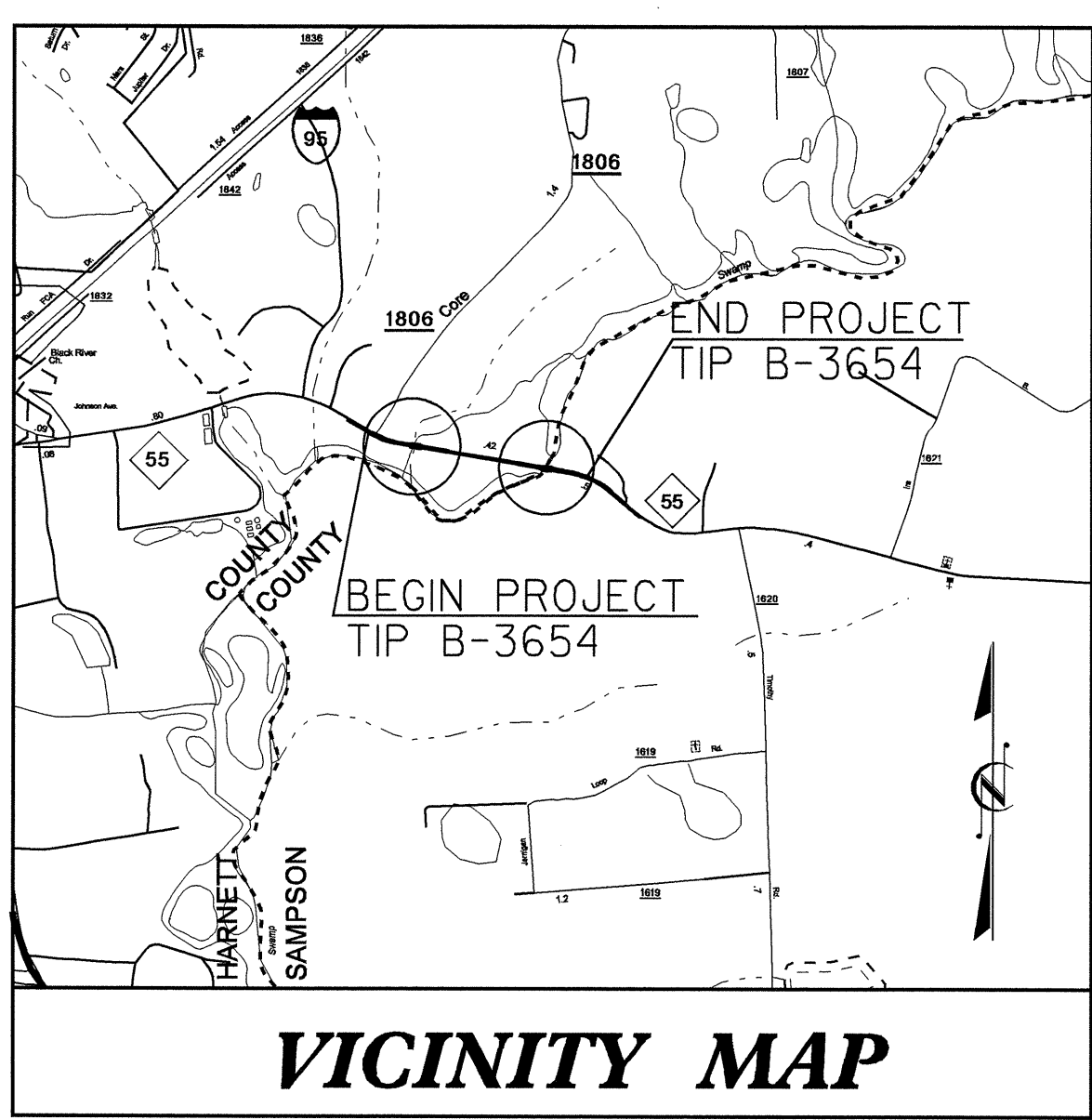
T.I.P. NO.	SHEET NO.
B-3654	UO-1

STATE OF NORTH CAROLINA
DIVISION OF HIGHWAYS

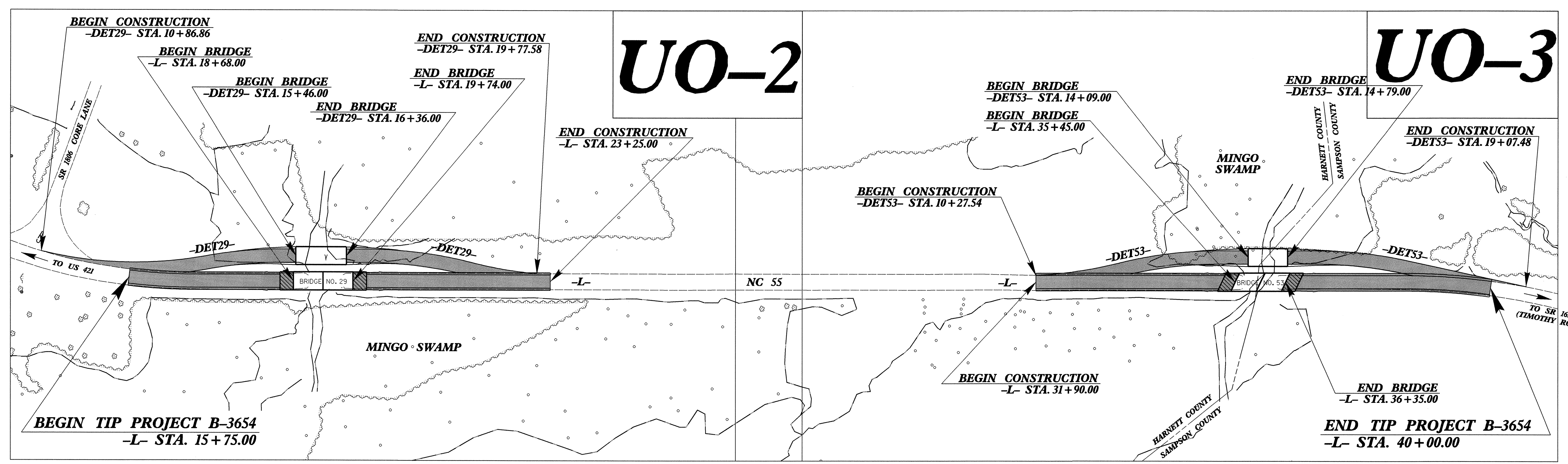
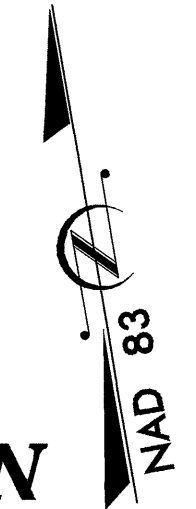
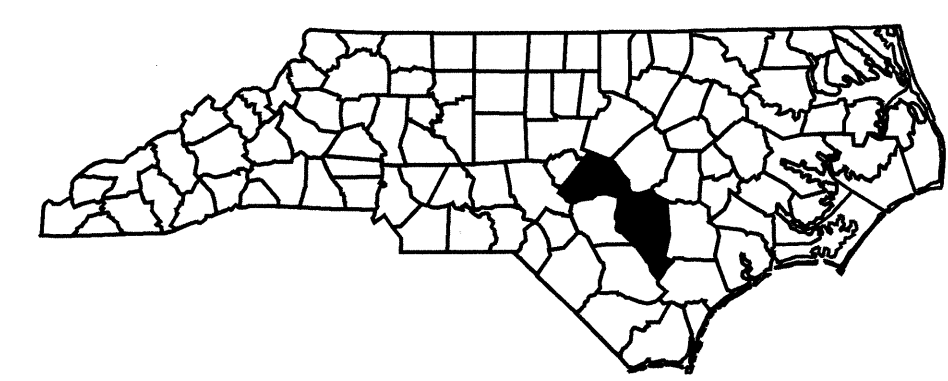
**UTILITIES BY OTHERS PLANS
HARNETT AND SAMPSON COUNTIES**

LOCATION: REPLACE BRIDGES 29 & 53 OVER MINGO SWAMP ON NC 55

TYPE OF WORK: POWER AND TELEPHONE RELOCATION

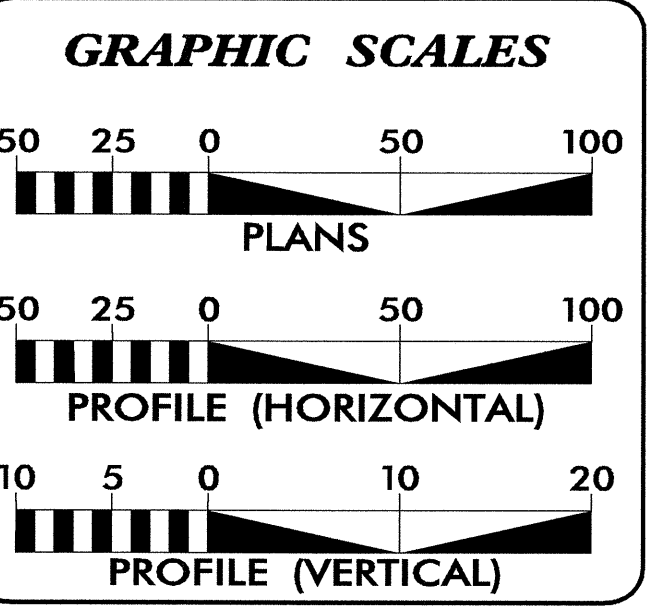


VICINITY MAP



UO-2

UO-3



INDEX OF SHEETS	
SHEET NO.	DESCRIPTION
UO-1	TITLE SHEET
UO-2 THRU UO-3	UTILITIES BY OTHERS PLAN SHEETS

UTILITY OWNERS ON PROJECT
(1) TELEPHONE - VERIZON
(2) POWER - PROGRESS ENERGY

PREPARED IN THE OFFICE OF:
**DIVISION OF HIGHWAYS
UTILITIES ENGINEERING SECTION**

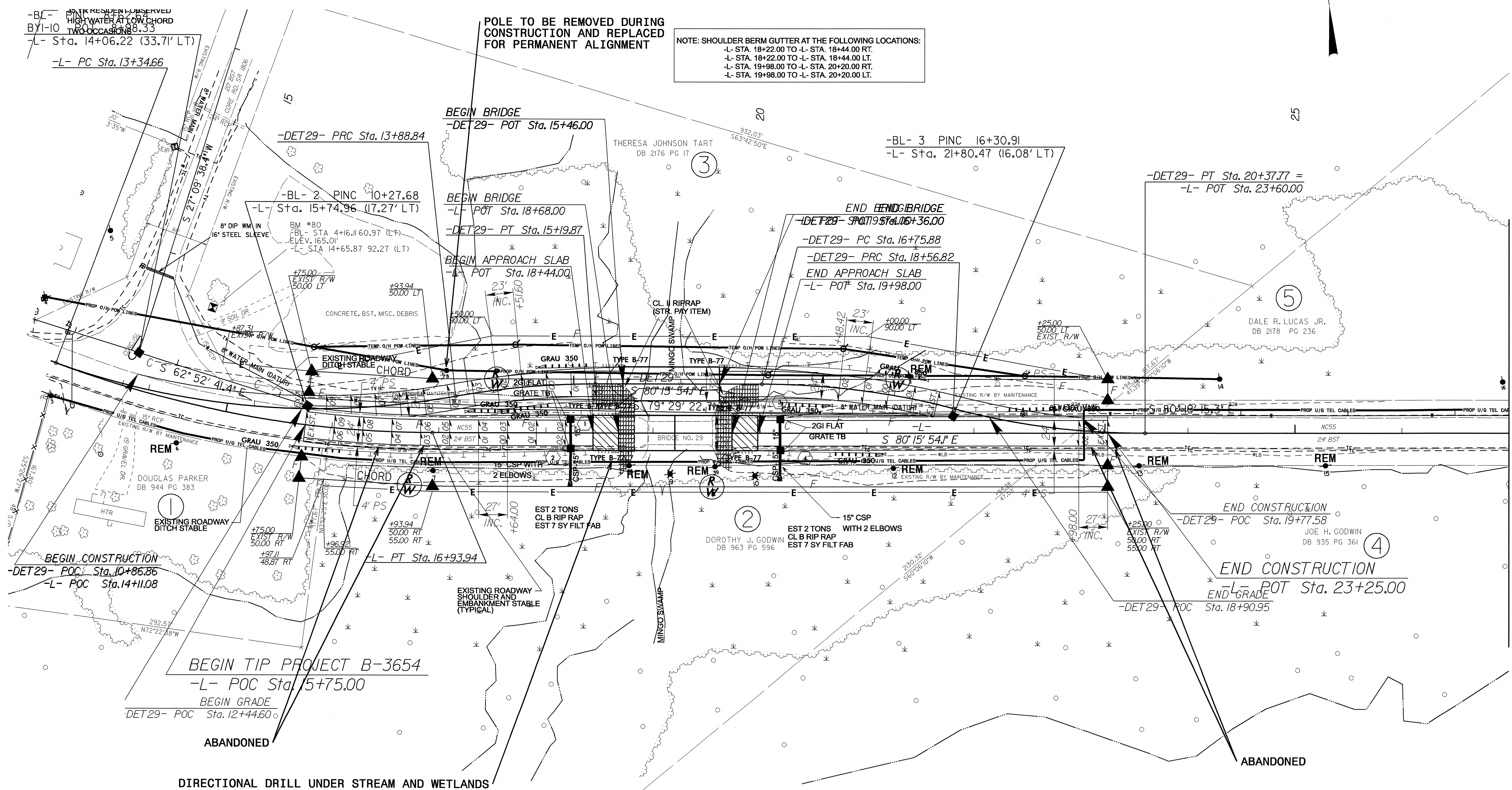
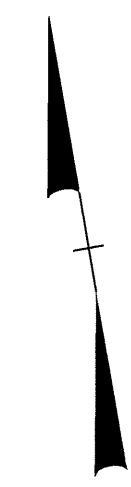
1591 MAIL SERVICES CENTER
RALEIGH, NC 27699-1591
PHONE (919) 250-4128
FAX (919) 250-4119

Roger Worthington, P.E. UTILITIES SECTION ENGINEER
Carl Barclay, P.E. UTILITIES SQUAD LEADER PROJECT ENGINEER
Bo Hemphill, P.E. UTILITIES PROJECT DESIGNER

14-OCT-2009 09:34
F:\UTIL\160\proj\proj\3654\ut_title_uol_psh.dgn
\$\$\$\$USERNAME\$\$\$\$

UTILITIES BY OTHERS

NOTE:
ALL PROPOSED UTILITY WORK
SHOWN ON THIS SHEET WILL
BE DONE BY OTHERS



NOTE: SHOULDER BERM GUTTER AT THE FOLLOWING LOCATIONS:
 -L- STA. 18+22.00 TO -L- STA. 18+44.00 RT.
 -L- STA. 18+22.00 TO -L- STA. 18+44.00 LT.
 -L- STA. 19+98.00 TO -L- STA. 20+20.00 RT.
 -L- STA. 19+98.00 TO -L- STA. 20+20.00 LT.

MATCHLINE -L- STA. 27+00.00 SEE SHEET UO-3

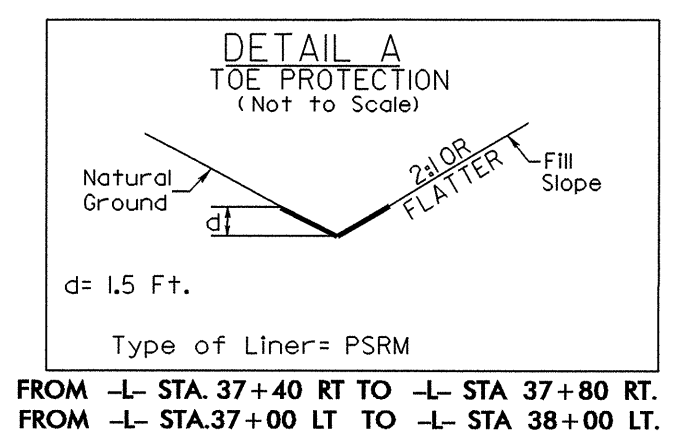
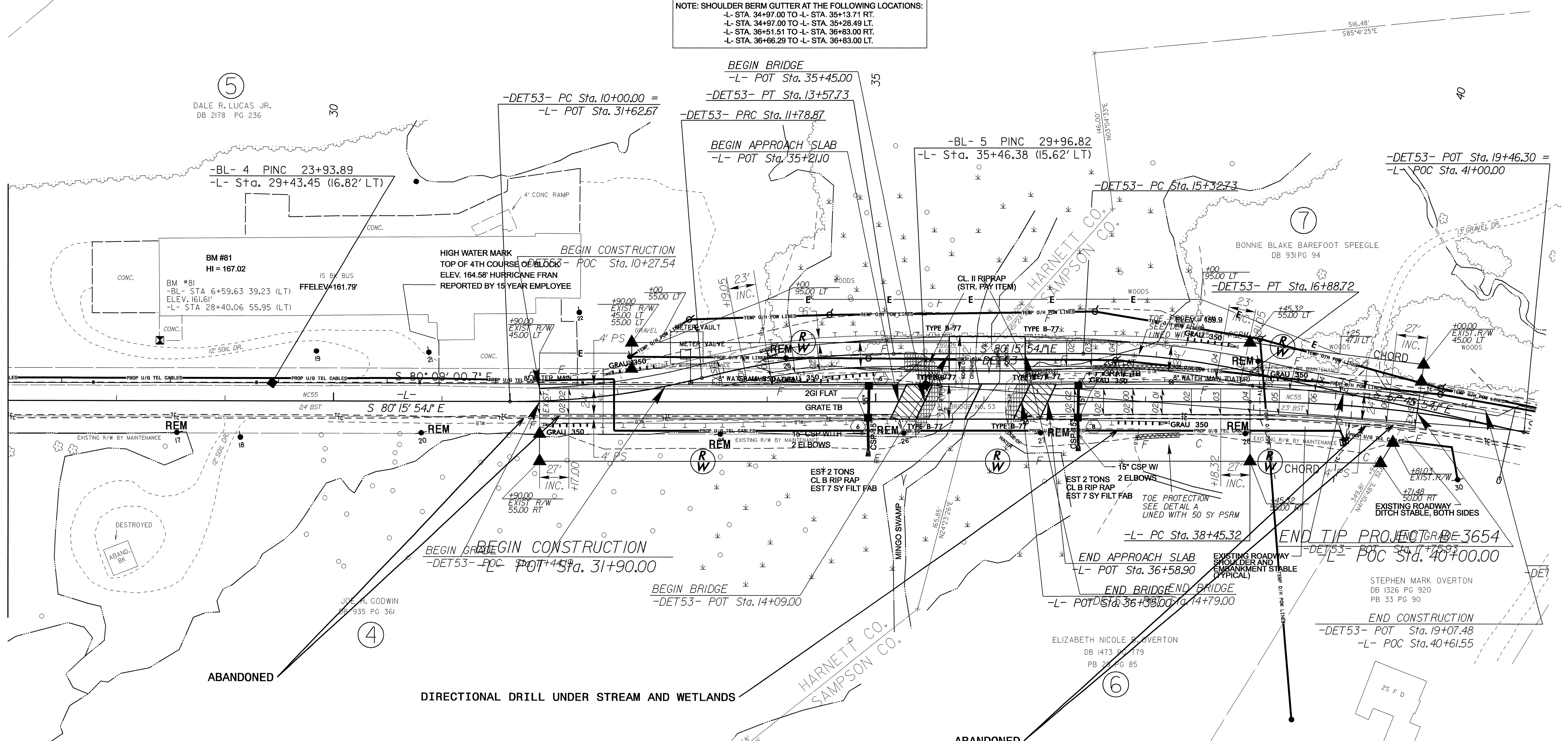
5/14/99
14-OCT-2009 09:49
\\utms\projects\p04\3654-ut_04\c02_psh.dgn

UTILITIES BY OTHERS

NOTE:
ALL PROPOSED UTILITY WORK SHOWN ON THIS SHEET WILL BE DONE BY OTHERS

NOTE: SHOULDER BERM GUTTER AT THE FOLLOWING LOCATIONS:
 -L- STA. 34+97.00 TO -L- STA. 35+13.71 RT.
 -L- STA. 34+97.00 TO -L- STA. 35+28.49 LT.
 -L- STA. 36+51.51 TO -L- STA. 36+83.00 RT.
 -L- STA. 36+66.29 TO -L- STA. 36+83.00 LT.

MATCHLINE -L- STA. 27+00.00 SEE SHEET UO-2



5/14/99
14-OCT-2009 09:23
I:\utilities\psh\proj\lb3654-ut.uo3-psh.dgn