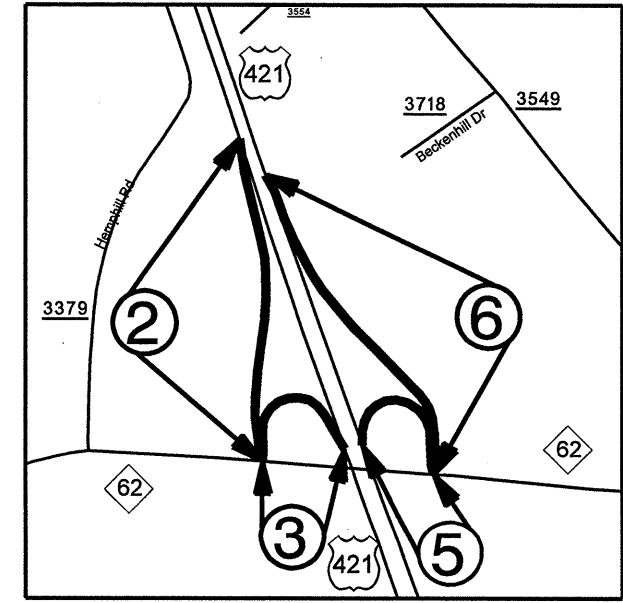
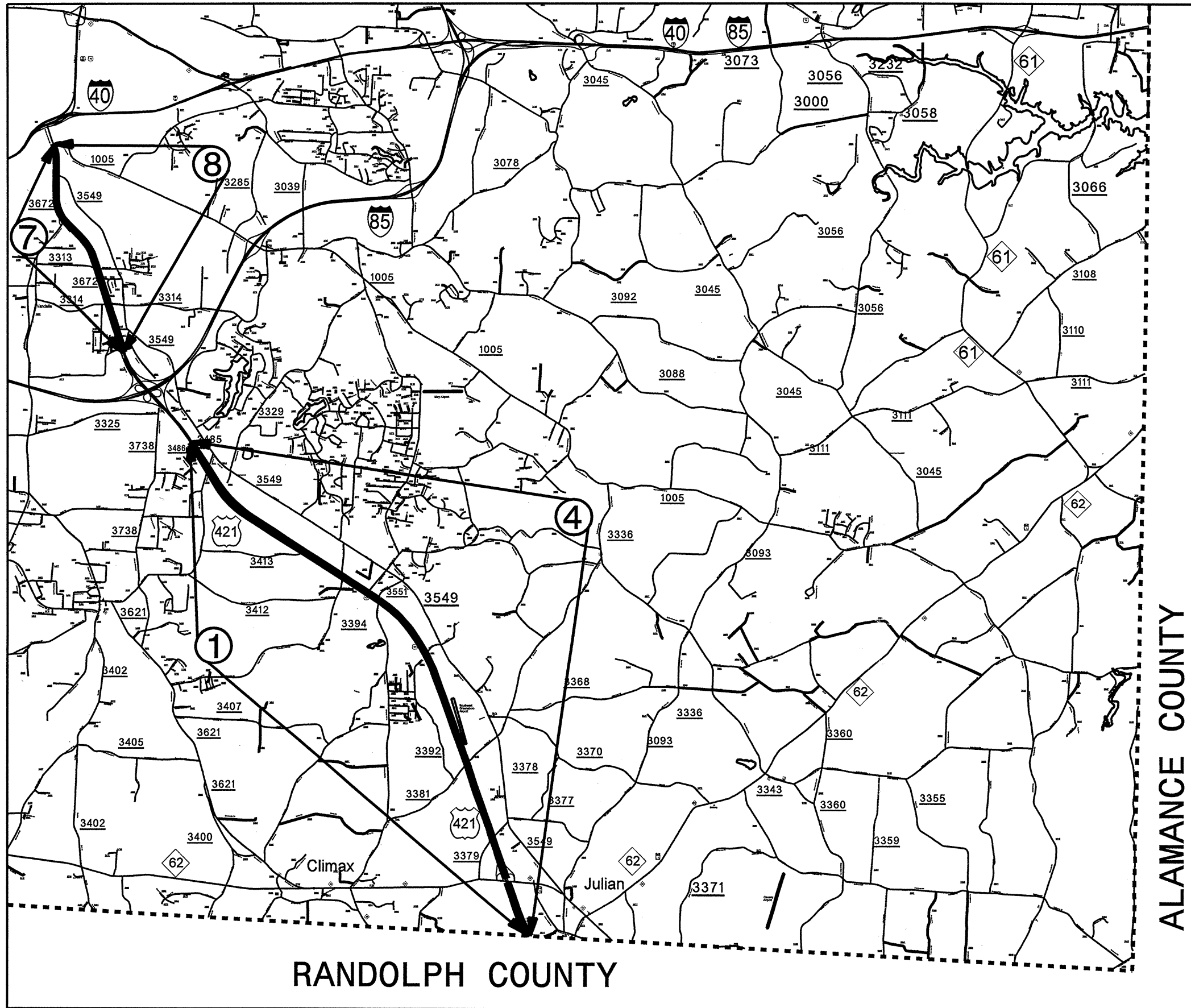


STATE	PROJECT NO.	SHEET NO.	TOTAL SHEETS
N.C.	U-5157B(45183.3.ST2)	1	7

45183.3.ST2  
7CR.20411.23

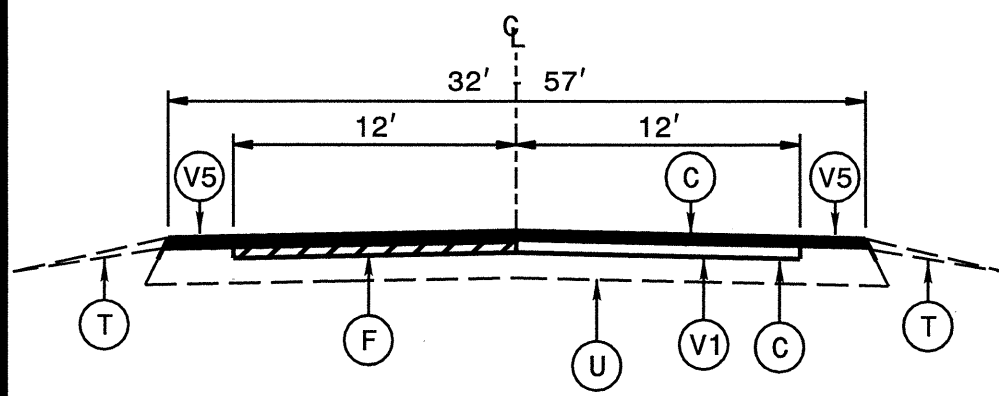


GUILFORD COUNTY

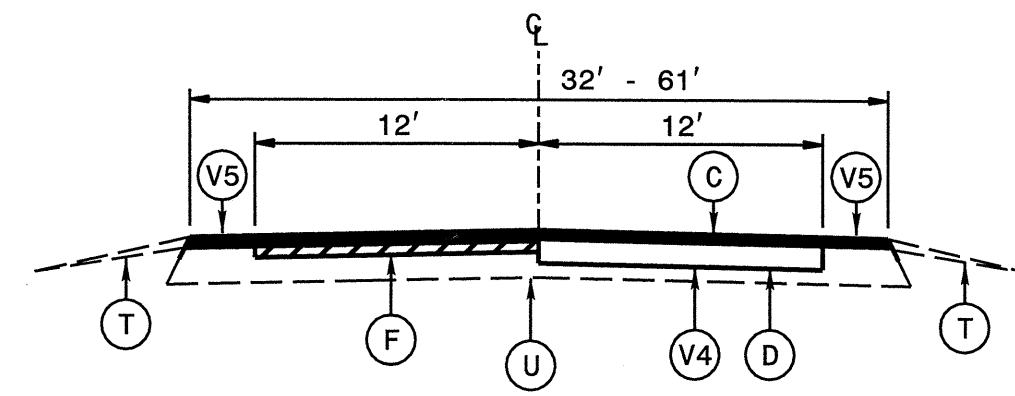


STATE	PROJECT NO.	SHEET NO.	TOTAL SHEETS
N.C.	U-5157B (45183.3.ST2), ETC.	2	7

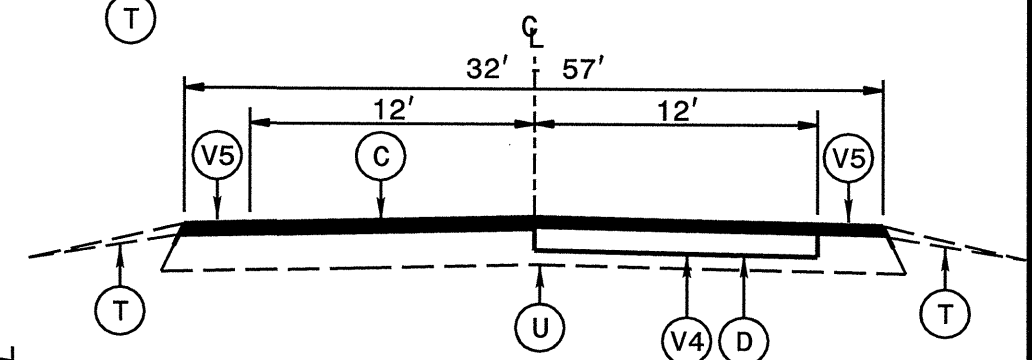
45183.3.ST2  
7CR.20411.23



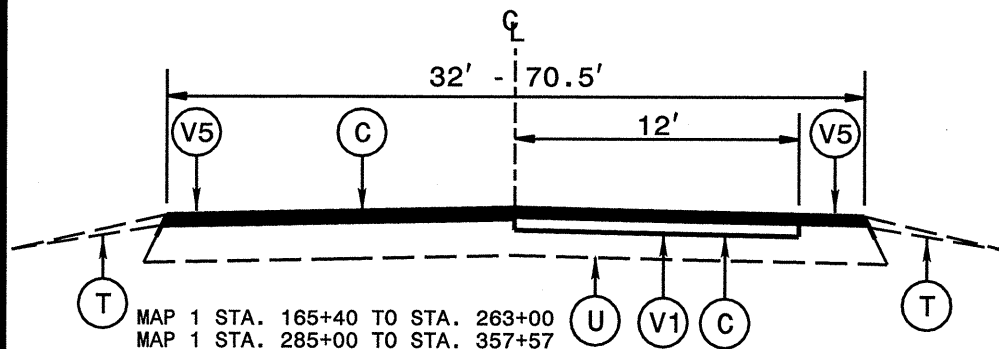
MAP 1 STA. 000+00 TO STA. 165+40  
MAP 4 STA. 131+00 TO STA. 221+16  
MAP 8 STA. 018+00 TO STA. 084+80  
**TYPICAL SECTION NO. 1**



MAP 4 STA. 000+00 TO STA. 035+80  
MAP 4 STA. 040+00 TO STA. 131+00  
MAP 7 STA. 004+16 TO STA. 080+79  
MAP 8 STA. 000+00 TO STA. 018+00  
**TYPICAL SECTION NO. 5**

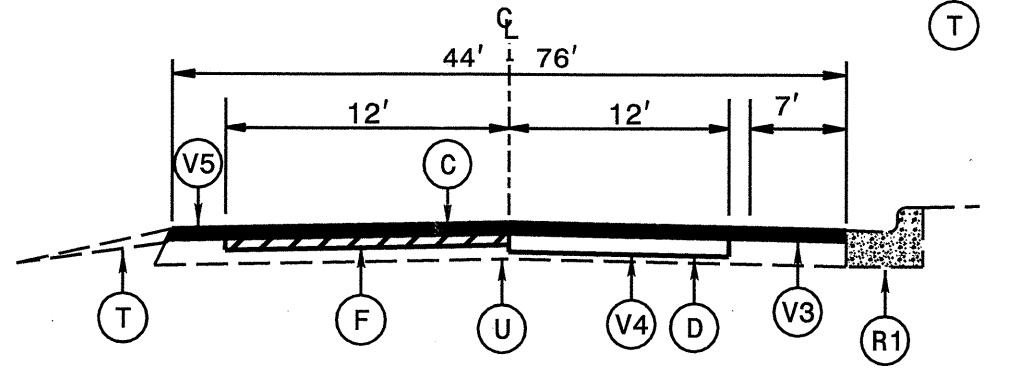


MAP 7 STA. 080+79 TO STA. 139+14  
**TYPICAL SECTION NO. 8A**

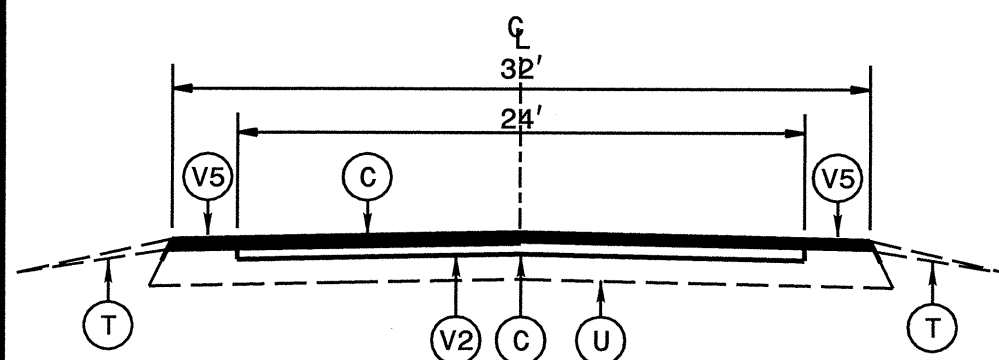


MAP 1 STA. 165+40 TO STA. 263+00  
MAP 1 STA. 285+00 TO STA. 357+57  
MAP 1 STA. 364+55 TO STA. 398+10  
MAP 4 STA. 364+00 TO STA. 398+62  
MAP 8 STA. 084+80 TO STA. 122+00

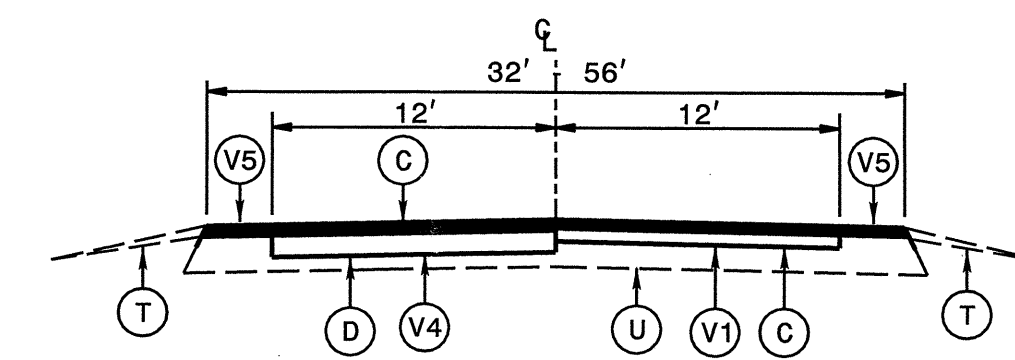
**TYPICAL SECTION NO. 2**



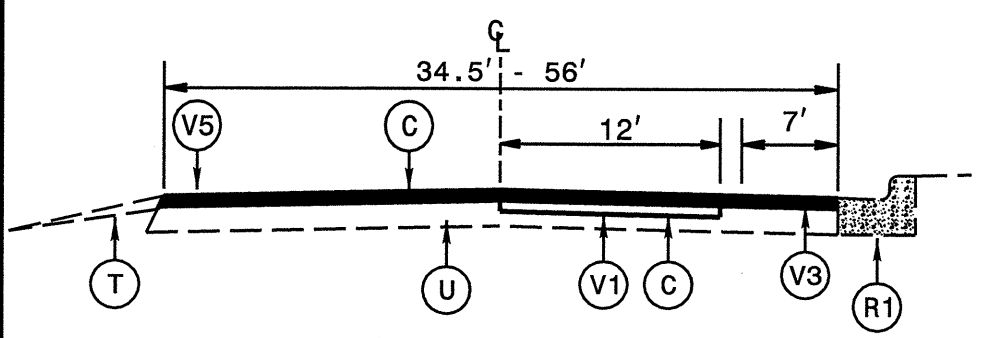
MAP 4 STA. 35+80 TO STA. 40+00  
**TYPICAL SECTION NO. 6**



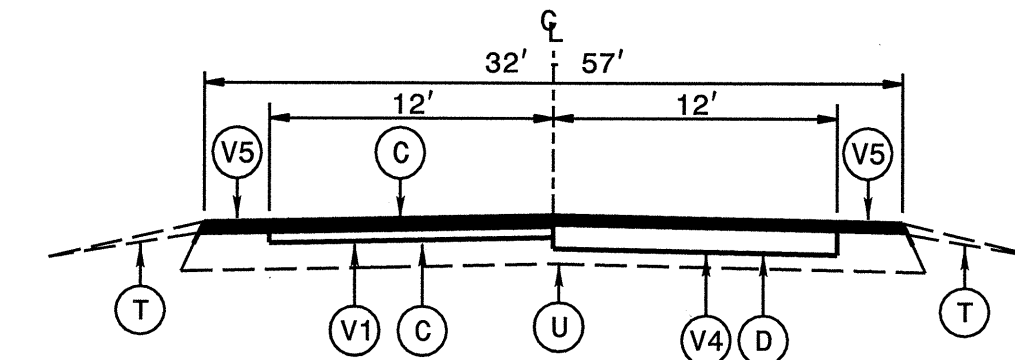
MAP 1 STA. 263+00 TO STA. 285+00  
**TYPICAL SECTION NO. 3**



MAP 4 STA. 221+16 TO STA. 255+22  
**TYPICAL SECTION NO. 7**



MAP 1 STA. 357+57 TO STA. 364+55  
MAP 8 STA. 122+00 TO STA. 134+44  
**TYPICAL SECTION NO. 4**



MAP 4 STA. 255+22 TO STA. 364+00  
**TYPICAL SECTION NO. 8**

PAVEMENT SCHEDULE	
C	PROP. APPROX. 1½" ASPHALT CONCRETE SURFACE COURSE, TYPE S9.5C, AT AN AVERAGE RATE OF 168 LBS. PER SQ. YD. AS AN OVERLAY
D	PROP. APPROX. 3" ASPHALT CONCRETE INTERMEDIATE COURSE, TYPE I19.0C, AT AN AVERAGE RATE OF 342 LBS. PER SQ. YD.
F	AST MAT COAT, 78M
R1	EXISTING CURB & GUTTER OR PAVED DITCH
R2	EXISTING CONCRETE ISLAND
T	SHOULDER RECONSTRUCTION
U	EXISTING PAVEMENT.
V1	MILL 1½" FOR 12' WIDE
V2	MILL 1½" FOR 16' TO 24' WIDE
V3	VARIABLE MILL 0" - 1½" FOR 7' WIDE
V4	MILL 3"
V5	MILLED RUMBLE STRIP

\$\$\$\$\$SYTIME\$\$\$\$\$  
\$\$\$\$\$DCN\$\$\$\$\$  
\$\$\$\$\$SERNAME\$\$\$\$\$







PROJECT NO.	SHEET NO.	TOTAL NO.
U-5157B (45183.3.ST2), 7CR.20411.24	6	7

## SUMMARY OF QUANTITIES

PROJECT NO	COUNTY	MAP NO	ROUTE	DESCRIPTION	TYP	FINAL SURFACE TESTING REQUIRED	LENGTH	WIDTH	INCIDENTAL STONE BASE	SHOULDER RECONSTRUCTION	1 1/2" MILLING	3" MILLING	0" TO 1.5" MILLING	INCIDENTAL MILLING	INTERMEDIATE COURSE, 1 1/2" COURSE	SURFACE COURSE, 1 1/2" COURSE	PG 64-22 PLANT MIX	PG 70-22 PLANT MIX	AST MAT COAT 78M	MILLED RUMBLE STRIPS	ADJ. OF MANHOLES	SEED & MULCHING	TRENCHING (UNPAVED) (1' X 2')	PULL BOX (STANDARD)	2" RISER W/ WEATHERHEAD	INDUCTIVE LOOP SAW CUT	LEAD-IN CABLE (14-2)	
NO		NO			NO		MI	FT	TONS	SMI	SY	SY	SY	SY	TONS	TONS	TONS	TONS	SY	LF	EA	AC	LF	EA	EA	LF	LF	
"	"	5	US-421 NB RAMP C	OFF RAMP TO NC 62	9	NO	0.12	24		0.12			474	133		143			9	1,478		0.04						
TOTAL FOR MAP NO. 5					13	NO	0.05	16-20			528	0	474	133	0	45			3									
"	"	6	US-421 NB RAMP D	ON RAMP FROM NC 62	12	NO	0.05	21.5-23		0.05	653					55			3			0.02						
TOTAL FOR MAP NO. 6					11	NO	0.26	24		0.52				133		309			19	3,661		0.19						
TOTAL FOR PROJ NO. U-5157B (45183.3.ST2)					11	NO	0.04	19-24		0.04		0	153			43			3	434		0.01						
TOTAL FOR PROJ NO. U-5157B (45183.3.ST2)							0.35		0	0.61	653	0	153	133	0	407			25	4,095		0.22	0	0	0	0	0	
TOTAL FOR PROJ NO. U-5157B (45183.3.ST2)							16.02		100	31.1	93,521	36,509	1,894	3,555	6,241	34,991	295	2,102	62,085	159,344		11.29	1,600	9	4	1,800	2,500	
7CR.20411.23	Guilford	7	SR 3672 (OLD US-421 SB (NORTH END))	FROM CONCRETE JOINT LOCATED JUST SOUTH OF PATTON AVE (NON SYSTEM) & SR 1005 (ALAMANCE CHURCH ROAD) TO JOINT LOCATED 0.57 MILES NORTH OF I-85	10	NO	0.03	27		0.03		215		150	37	40	2	3	211	27,828	1	0.01						
TOTAL FOR MAP NO. 7					10	NO	0.02	27-33.4		0.02		139			24	33	1	2	141				0.01					
TOTAL FOR MAP NO. 7					10	NO	0.03	33.4		0.03		201	117		37	50	2	3	211				0.01					
TOTAL FOR MAP NO. 7					5	NO	0.11	32-33.4		0.22		743			135	178	6	11	774				0.08					
TOTAL FOR MAP NO. 7					5	NO	0.04	33.4-44		0.08		280			49	77	2	5	282				0.03					
TOTAL FOR MAP NO. 7					5	NO	0.12	44-48.3		0.24		869			147	273	7	16	869				0.09					
TOTAL FOR MAP NO. 7					5	NO	0.49	32-33.5		0.98		3,463			602	795	28	48	3,463				0.36					
TOTAL FOR MAP NO. 7					5	NO	0.05	33.5-46		0.1		353			61	98	3	6	352				0.04					
TOTAL FOR MAP NO. 7					5	NO	0.06	46-52		0.12		404			74	253	3	15	422				0.04	700	5	2	750	1,500
TOTAL FOR MAP NO. 7					5	NO	0.58	32-32.5		1.16		4,105			713	927	34	56	4,083				0.42					
TOTAL FOR MAP NO. 7					8A	NO	0.02	32-37.5		0.04		141			25	34	1	2					0.01					
TOTAL FOR MAP NO. 7					8A	NO	0.04	37.5-54		0.08		273			49	91	2	5					0.03					
TOTAL FOR MAP NO. 7					8A	NO	0.04	54-57		0.08		300			49	110	2	7					0.03					
TOTAL FOR MAP NO. 7					8A	NO	1.00	35		2		7,065		178	1,229	1,731	58	104					0.73					
TOTAL FOR MAP NO. 7							2.63		0	5.18	0	18,551	117	328	3,231	4,690	151	283	10,808	27,828	1	1.89	700	5	2	750	1,500	
"	"	8	SR 3672 (OLD US-421 NB (NORTH END))	FROM JOINT LOCATED 0.57 MILES NORTH OF I-85 TO CONCRETE SECTION LOCATED JUST SOUTH OF PATTON AVE. (NON SYSTEM) & SR 1005 (ALAMANCE CHURCH ROAD)	5,1	NO	0.92	32-32.5		1.84	4,076	2,400		178	410	1,812	19	109	6,477	27,394		0.67						
TOTAL FOR MAP NO. 8					1	NO	0.05	32.5-54		0.1	336					135		8	352				0.03					
TOTAL FOR MAP NO. 8					1	NO	0.03	54		0.06	219					190		11	219				0.02					
TOTAL FOR MAP NO. 8					1	NO	0.61	32-32.7		1.21	4,276					1,337		80	4,294				0.44					
TOTAL FOR MAP NO. 8					2	NO	0.04	32.7-42		0.08	272				97		6						0.03					
TOTAL FOR MAP NO. 8					2	NO	0.01	42-47.5		0.01	104				31		2						0.03					
TOTAL FOR MAP NO. 8					2	NO	0.06	47.5-55		0.11	395					244		15					0.04	800	5	2	750	1,500
TOTAL FOR MAP NO. 8					2	NO	0.60	32-32.5		1.19	4,189					1,334		80					0.43					
TOTAL FOR MAP NO. 8					4	NO	0.03	34.5-36		0.03	179		104			67		4					0.01					
TOTAL FOR MAP NO. 8					4	NO	0.03	40.5-56		0.03	208		121			89		5					0.01					
TOTAL FOR MAP NO. 8					4	NO	0.07	40.5		0.07	513		300			183		11					0.03					
TOTAL FOR MAP NO. 8					4	NO	0.11	34-40.5		0.11	759		443			267		16					0.04					
TOTAL FOR MAP NO. 8					14	NO	0.05	31		0.1	337		309	67		105		6					0.03					
TOTAL FOR PROJ NO. 7CR.20411.23							2.61		0	4.94	15,863	2,400	1,277	245	410	5,891	19	353	11,342	27,394		1.81	800	5	2	750	1,500	
TOTAL FOR PROJ NO. 7CR.20411.23							5.24		0	10.12	15,863	20,951	1,394	573	3,641	10,581	170	636	22,150	55,222	1	3.70	1,500	10	4	1,500	3,000	
GRAND TOTAL							21.26		100	41.22	109,384	57,460	3,288	4,128	9,882	45,572	465	2,738	84,235	214,566	1	14.99	3,100	19	8	3,300	5,500	



PROJECT NO.	SHEET NO.	TOTAL NO.
U-5157B (45183.3.ST2), 7CR.20411.23	7	7

## THERMOPLASTIC AND PAINT QUANTITIES

PROJECT NO	COUNTY	MAP NO	ROUTE	DESCRIPTION	TRAFFIC CONTROL	4" X 90 M WHITE THERMO	4" X 90 M YELLOW THERMO	4" X 120 M WHITE THERMO	4" X 120 M YELLOW THERMO	6" X 120 M WHITE THERMO	8" X 90 M WHITE THERMO	24" X 120 M WHITE THERMO	THERMO MSG AHEAD 120 M	THERMO MSG SIGNAL 120 M	THERMO LT ARROW 90 M	THERMO STR ARROW 90 M	THERMO RT ARROW 90 M	THERMO MERGE LEFT ARROW 90 M	THERMO RAMP ARROW	4" WHITE PAINT	4" YELLOW PAINT	6" WHITE PAINT	PAINT STR ARROW	PAINT MERGE LEFT ARROW	SNOW PLOWABLE MARKERS	
						LF	LF	LF	LF	LF	LF	LF	EA	EA	EA	EA	EA	EA	EA	EA	EA	EA	EA	EA	EA	EA
U-5157B (45183.3.ST2)	Guilford	1	US-421 SB (SOUTH END)	BEGINNING AT JOINT 814' NORTH OF SR 3485 (HARMONT DRIVE) TO RANDOLPH COUNTY	"	39,810	39,810	11,898		411	440	90	10	12	8	24	7	3	1	51,708	2,200	411	12	3	498	
"	"	2	US-421 SB RAMP A	OFF RAMP TO NC 62	"	1,488	1,488												1							
"	"	3	US-421 SB RAMP B	ON RAMP FROM NC 62	"		657																			
"	"	4	US-421 NB (SOUTH END)	FROM RANDOLPH COUNTY TO JOINT 814' NORTH OF SR 3485 (HARMONT ROAD)	"	39,987	40,260	11,327		88	1,473	103	10	12	10	24	4	3		51,314	14,284	88	12	3	498	
"	"	5	US-421 NB RAMP C	OFF RAMP TO NC 62	"		610												1							
"	"	6	US-421 NB RAMP D	ON RAMP FROM NC 62	"		1,830				249															
<b>TOTAL FOR PROJ NO. U-5157B (45183.3.ST2)</b>						<b>81,285</b>	<b>84,655</b>	<b>23,225</b>		<b>499</b>	<b>2,162</b>	<b>193</b>	<b>20</b>	<b>24</b>	<b>18</b>	<b>48</b>	<b>11</b>	<b>6</b>	<b>3</b>	<b>103,022</b>	<b>16,484</b>	<b>499</b>	<b>24</b>	<b>6</b>	<b>996</b>	
						<b>165,940</b>		<b>23,225</b>					<b>44</b>				<b>86</b>			<b>119,506</b>			<b>30</b>			
7CR.20411.23	Guilford	7	SR 3672 (OLD US-421 SB (NORTH END))	FROM CONCRETE JOINT LOCATED JUST SOUTH OF PATTON AVE (NON SYSTEM) & SR 1005 (ALAMANCE CHURCH ROAD) TO JOINT LOCATED 0.57 MILES NORTH OF I-85	"	14,284	14,284	4,543	818	24	180	162			8	9	5			18,335	14,284		4		173	
"	"	8	SR 3672 (OLD US-421 NB (NORTH END))	FROM JOINT LOCATED 0.57 MILES NORTH OF I-85 TO CONCRETE SECTION LOCATED JUST SOUTH OF PATTON AVE. (NON SYSTEM) & SR 1005 (ALAMANCE CHURCH ROAD)	"	13,697	13,697	4,042	100	22	330	171			3	8	2	2		17,739	13,697	22	4		171	
<b>TOTAL FOR PROJ NO. 7CR.20411.24</b>						<b>27,981</b>	<b>27,981</b>	<b>8,585</b>	<b>918</b>	<b>46</b>	<b>510</b>	<b>333</b>			<b>11</b>	<b>17</b>	<b>7</b>	<b>2</b>		<b>36,074</b>	<b>27,981</b>	<b>22</b>	<b>8</b>		<b>344</b>	
						<b>55,962</b>		<b>9,503</b>									<b>37</b>			<b>64,055</b>			<b>8</b>			
<b>GRAND TOTAL</b>						<b>1</b>	<b>109,266</b>	<b>112,636</b>	<b>31,810</b>	<b>918</b>	<b>545</b>	<b>2,672</b>	<b>526</b>	<b>20</b>	<b>24</b>	<b>29</b>	<b>65</b>	<b>18</b>	<b>8</b>	<b>3</b>	<b>139,096</b>	<b>44,465</b>	<b>521</b>	<b>32</b>	<b>6</b>	<b>1,340</b>
							<b>221,902</b>		<b>32,728</b>				<b>44</b>				<b>123</b>			<b>183,561</b>			<b>38</b>			