

DALLAS
POP. 3,557

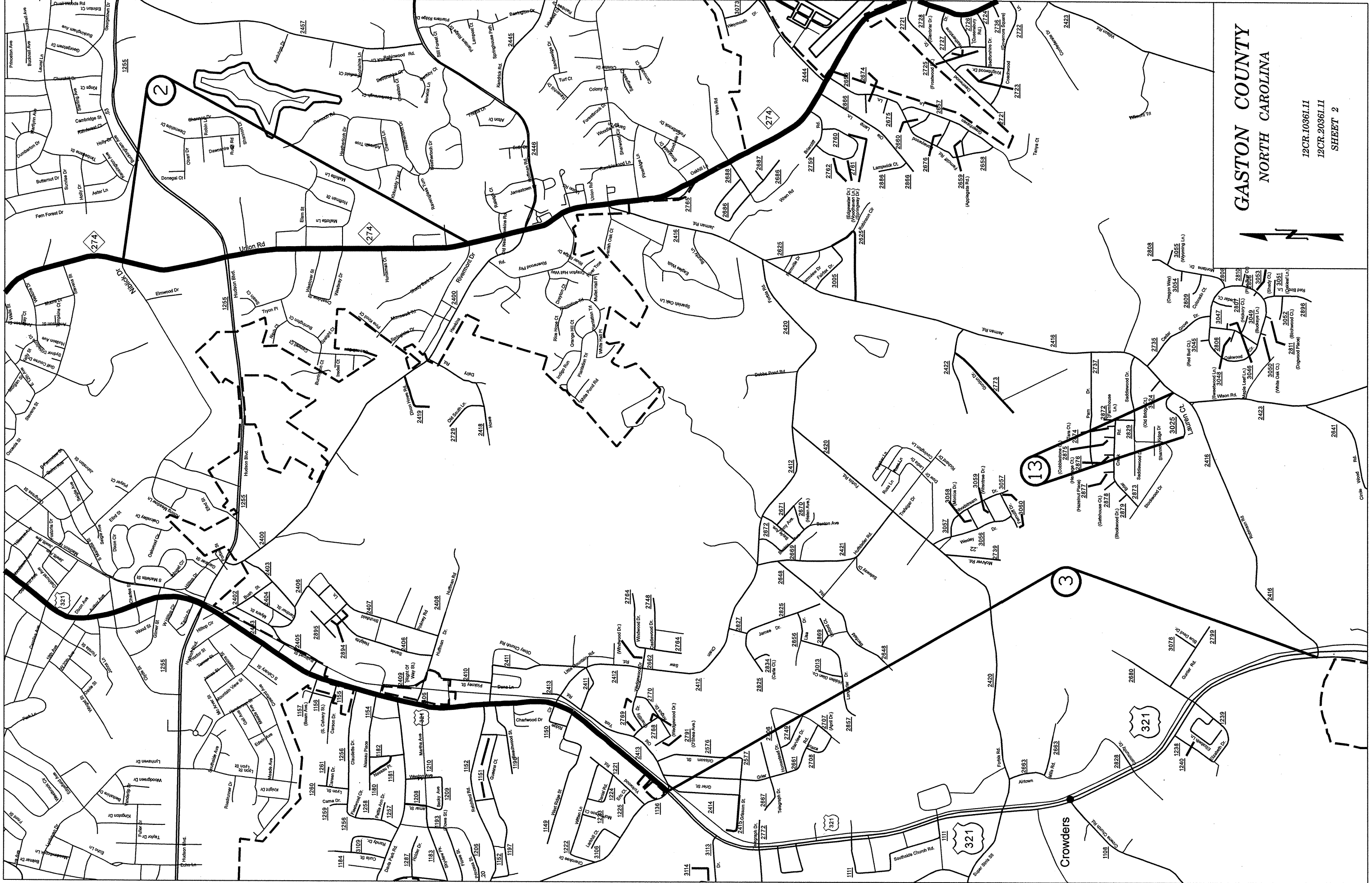
SPRINGDALE

GASTONIA

GASTON COUNTY
NORTH CAROLINA



12CR.10361.L1
12CR.20361.L1
SHEET 1



GASTON COUNTY
NORTH CAROLINA



12CR.10361.11
12CR.20361.11
SHEET 2

3

13

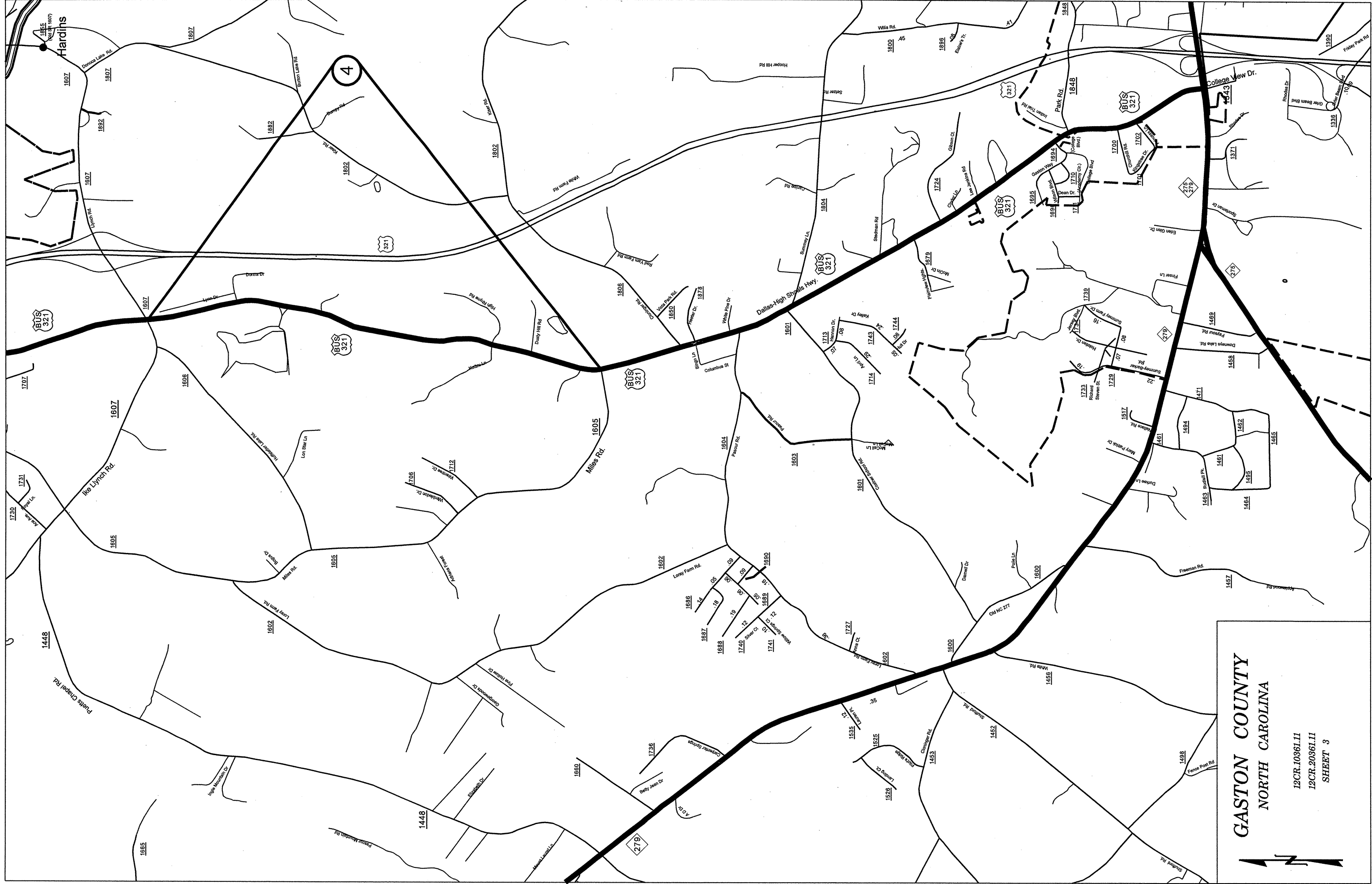
2

Crowders

321

321

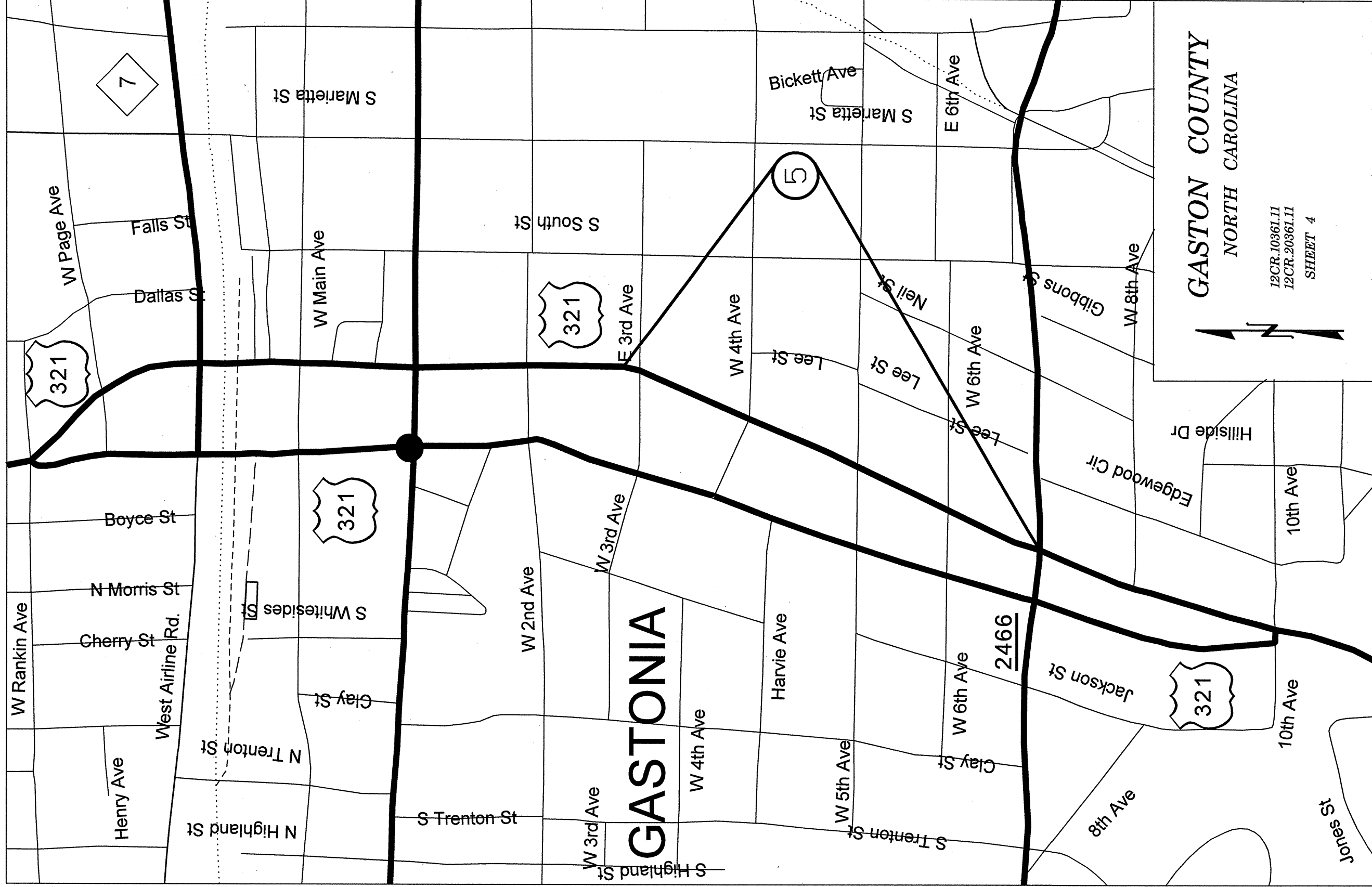
321

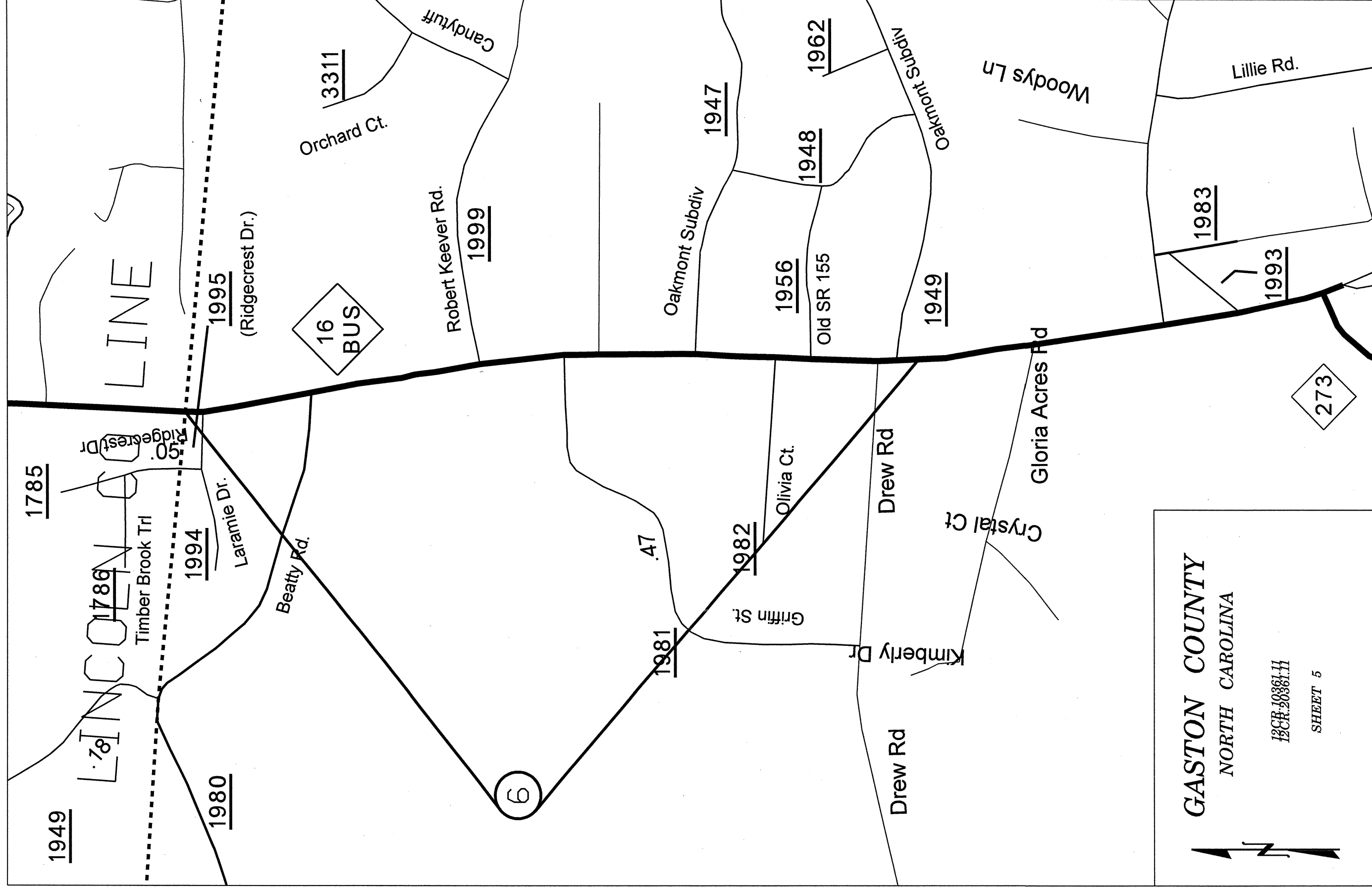



GASTON COUNTY
NORTH CAROLINA

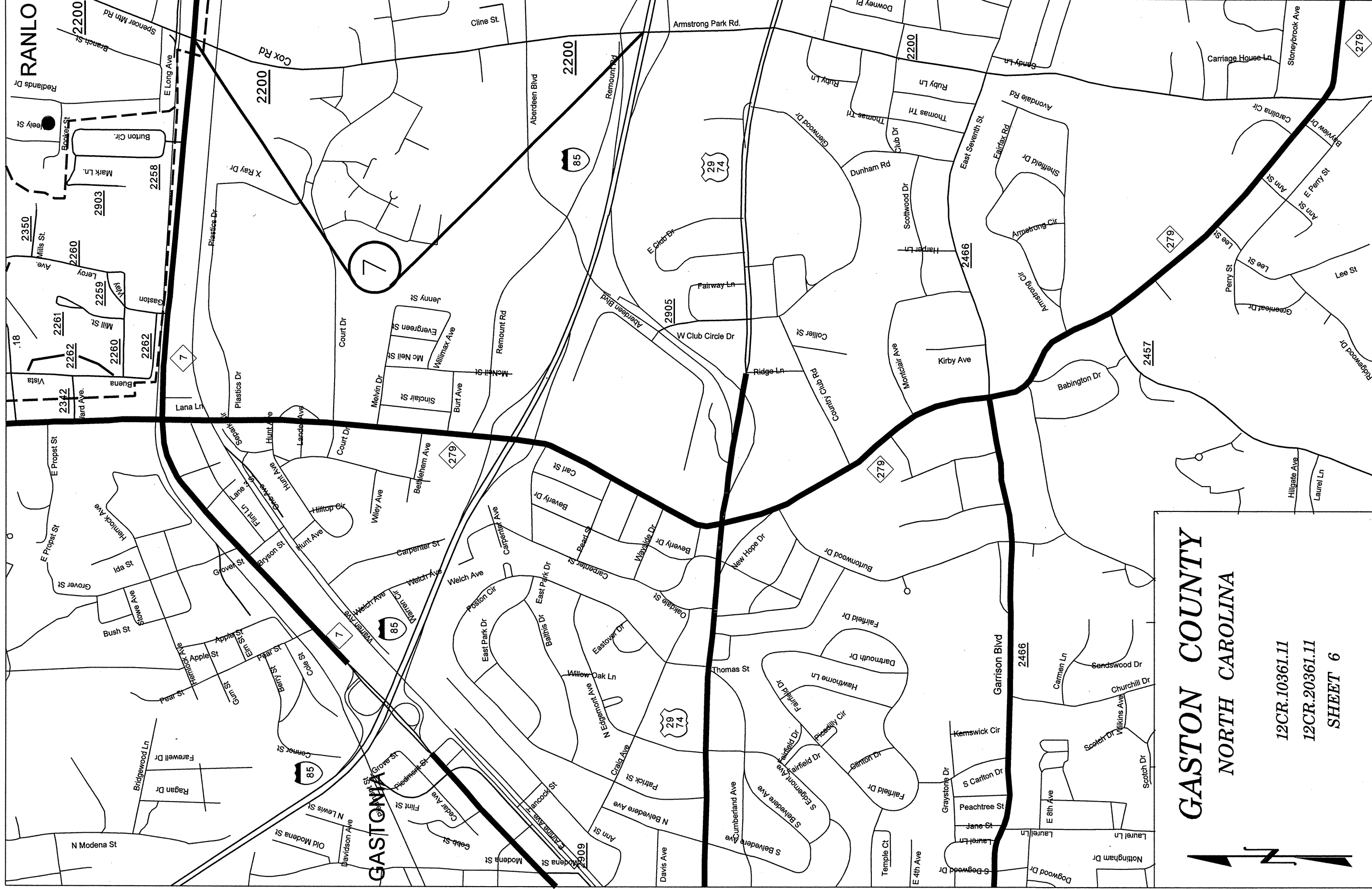
12CR.10361.11
 12CR.20361.11
 SHEET 3







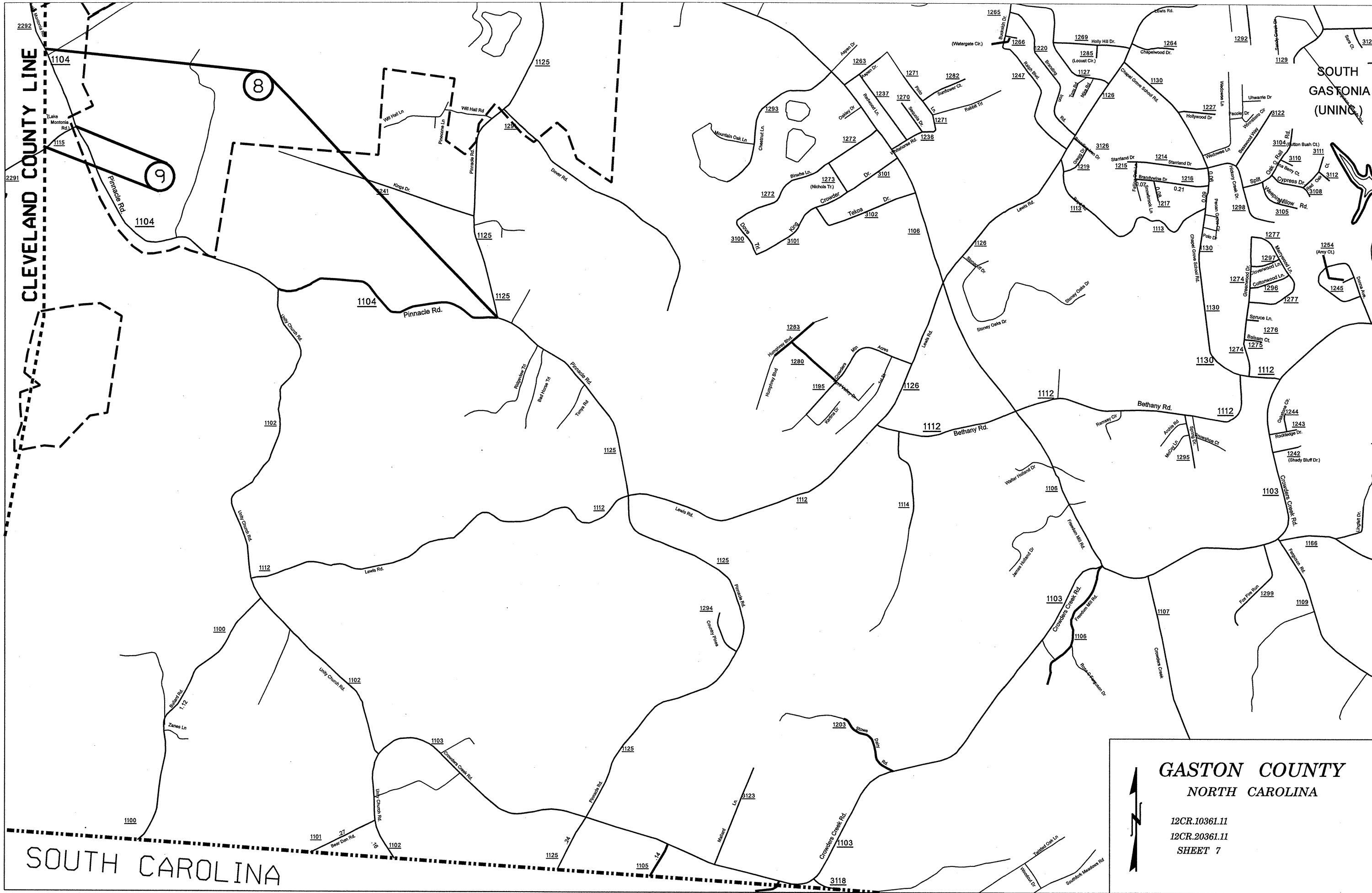

GASTON COUNTY
 NORTH CAROLINA
 BCR 10361.H
 BCR 20361.H
 SHEET 5



GASTON COUNTY
NORTH CAROLINA

12CR.10361.11
 12CR.20361.11
 SHEET 6



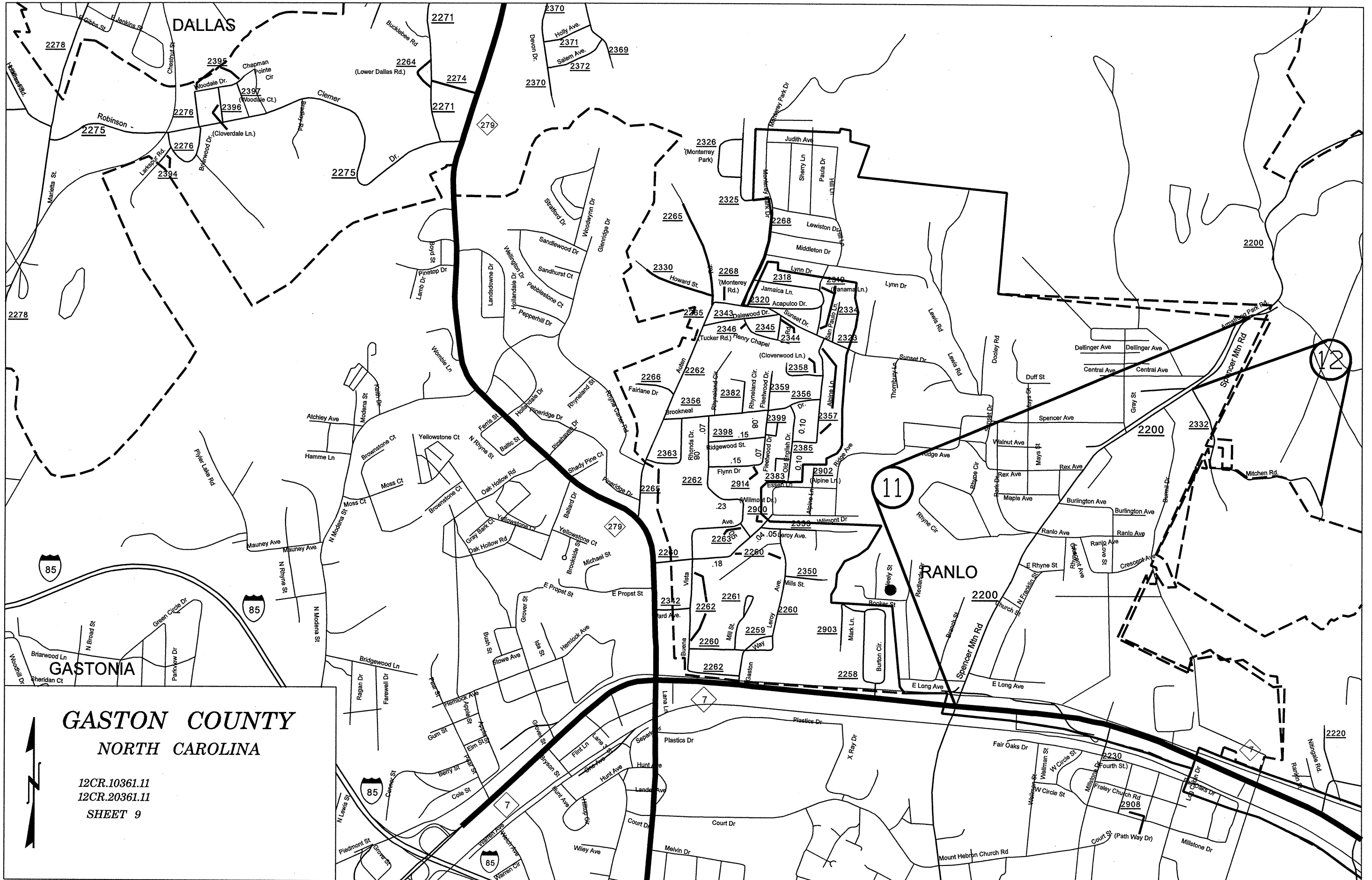




GASTON COUNTY
NORTH CAROLINA

12CR.10361.11
12CR.20361.11
SHEET 8





DALLAS

RANLO

GASTONIA

GASTON COUNTY NORTH CAROLINA

12CR.10361.11
12CR.20361.11
SHEET 9



11

12

2278

2275

2276

2395

2275

2271

2370

2371

2372

2326

2268

2268

2318

2340

2200

2200

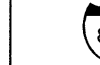
2200

2200

2200

2220

2278



7



7



7



7



7



7



7



7



7



7



7



7



7



7



7



7



7



7



7



7



7



7



7



7



7



7



7



7



7



7



7



7



7



7



7



7



7



7



7



7



7



7



7



7



7



7



7



7



7



7



7



7



7



7



7



7



7



7



7



7



7



7



7



7



7



7



7



7



7



7



7



7



7



7



7



7



7



7



7



7



7



7



7



7



7



7



7



7



7



7



7



7



7



7



7



7



7



7



7



7



7



7



7



7



7



7



7



7



7



7



7



7



7



7



7



7



7



7



7



7



7



7



7



7



7



7



7



7



7



7



7



7



7



7



7



7



7



7



7



7



7



7

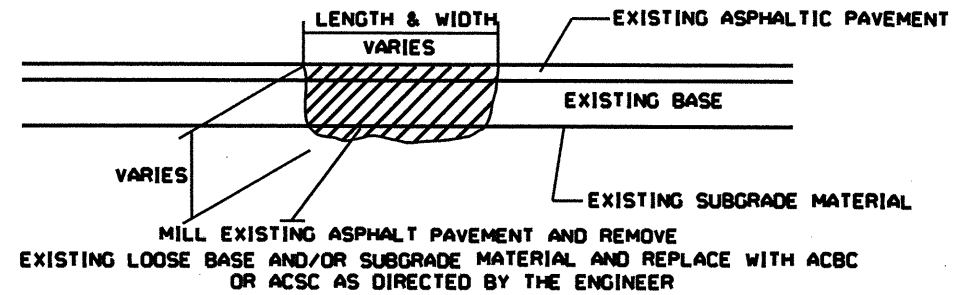


PROJ. REFERENCE NO.	SHEET NO.	TOTAL SHEETS
GASTON COUNTY 2010	10	
STATE PROJ. NO.	F.A. PROJ. NO.	DESCRIPTION
12CR.10361.11		
12CR.20361.11		

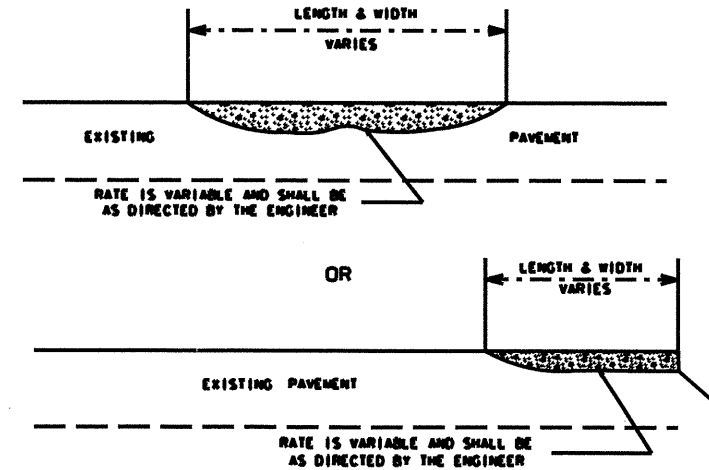
PAVEMENT SCHEDULE	
A	PROP. APPROX. 5.5" ASPHALT CONCRETE BASE COURSE, TYPE B25.0B, AT AN AVERAGE RATE OF 627 LBS. PER SQ. YD.
B	PROP. APPROX. 1½" ASPHALT CONCRETE SURFACE COURSE, TYPE S9.5B, AT AN AVERAGE RATE OF 168 LBS. PER SQ. YD.
C	PROP. APPROX. 1½" ASPHALT CONCRETE SURFACE COURSE, TYPE S9.5C, AT AN AVERAGE RATE OF 168 LBS. PER SQ. YD.
E	SHOULDER RECONSTRUCTION
F	MILL ASPHALT PAVEMENT APPROX. 1½" AS DIRECTED BY ENGINEER
G	MILL ASPHALT PAVEMENT APPROX. 3" - 4.5" AS DIRECTED BY ENGINEER
H	MILL ASPHALT PAVEMENT APPROX. 1½" - 4.5" AS DIRECTED BY ENGINEER
J	MILL ASPHALT PAVEMENT APPROX. 3" AS DIRECTED BY ENGINEER
K	MILL ASPHALT PAVEMENT APPROX. 1½" - 3" AS DIRECTED BY ENGINEER

NOTE: PAVEMENT EDGE SLOPES ARE 1:1 UNLESS SHOWN OTHERWISE.

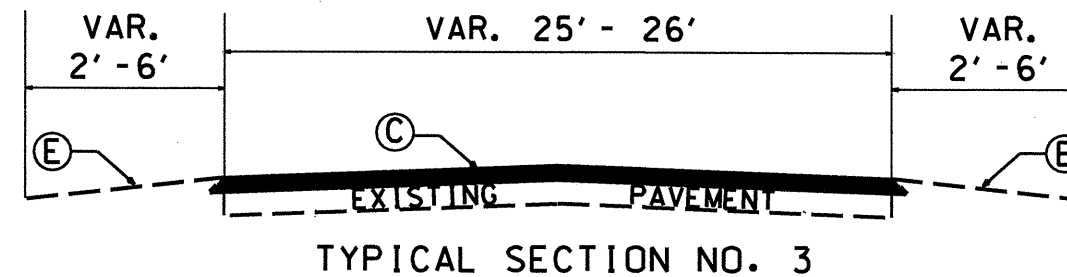
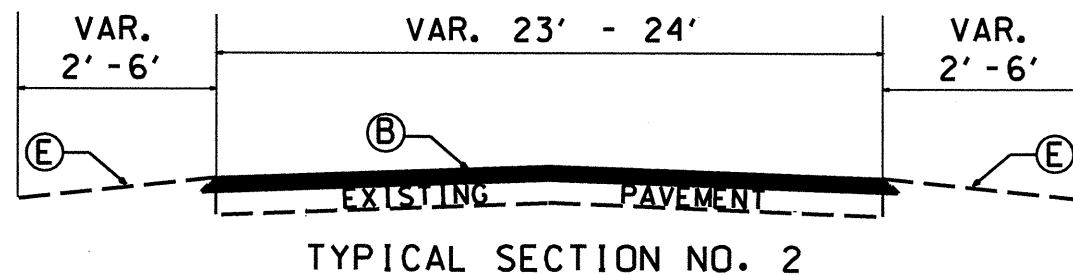
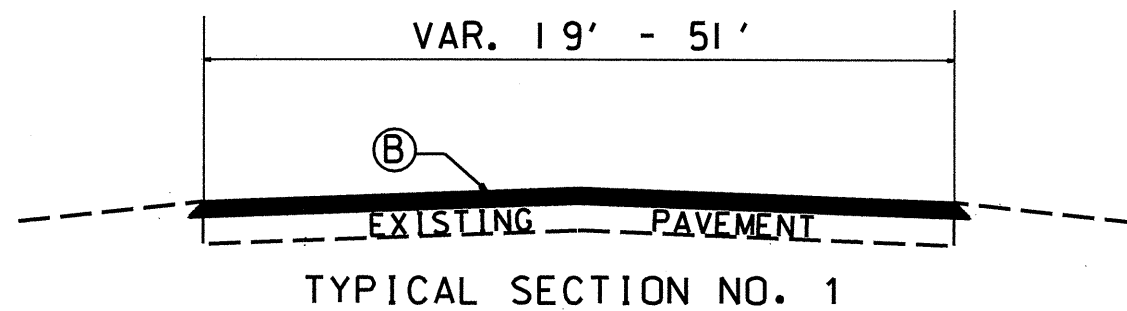
MILL BRIDGE APPROACHES 100' TO PROVIDE A SMOOTH TRANSITION AS DIRECTED.



PATCHING EXISTING PAVEMENT



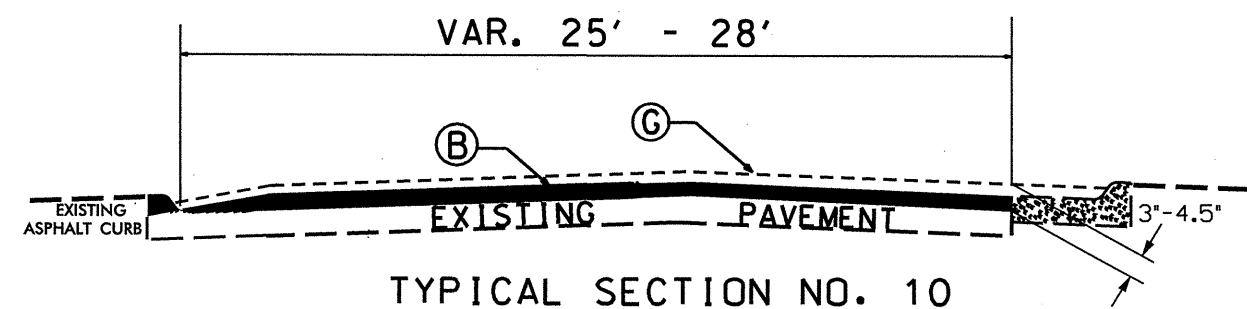
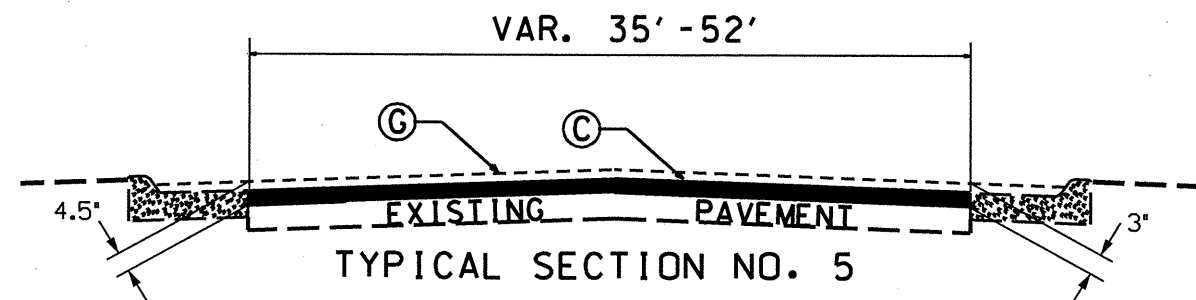
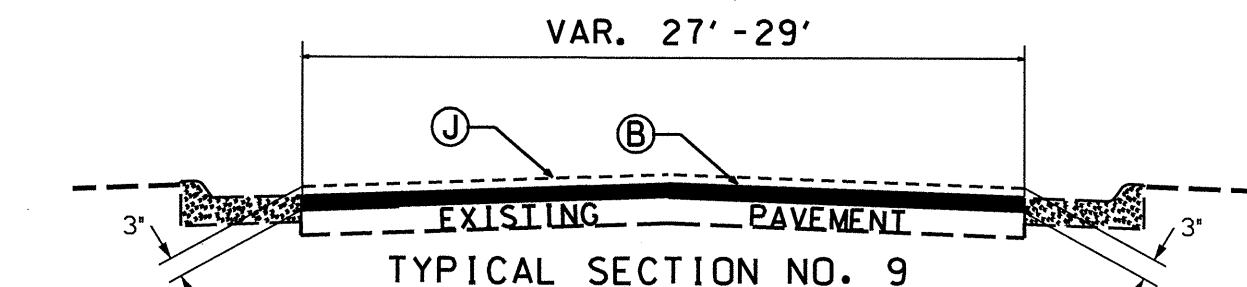
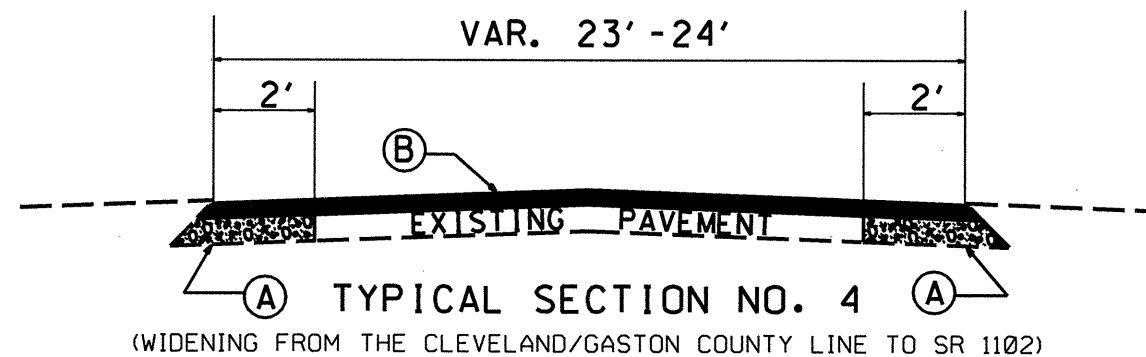
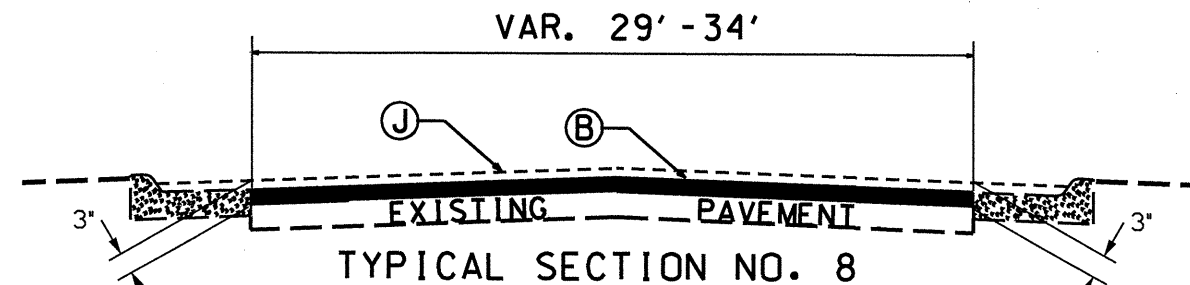
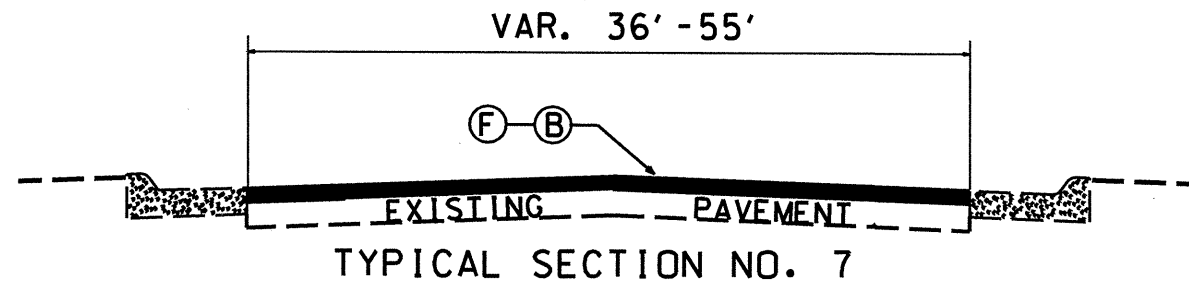
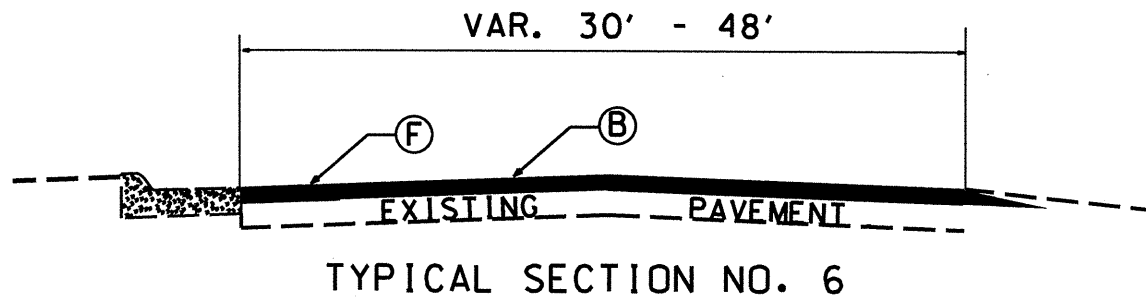
**ASPHALT CONCRETE SURFACE COURSE
TYPE S9.5B. (LEVELING COURSE)**



PROJ. REFERENCE NO.	SHEET NO.	TOTAL SHEETS
GASTON COUNTY 2010	11	
STATE PROJ. NO.	F. A. PROJ. NO.	DESCRIPTION
12CR.10361.11		
12CR.20361.11		

PAVEMENT SCHEDULE	
A	PROP. APPROX. 5.5" ASPHALT CONCRETE BASE COURSE, TYPE B25.0B, AT AN AVERAGE RATE OF 627 LBS. PER SQ. YD.
B	PROP. APPROX. 1½" ASPHALT CONCRETE SURFACE COURSE, TYPE S9.5B, AT AN AVERAGE RATE OF 168 LBS. PER SQ. YD.
C	PROP. APPROX. 1½" ASPHALT CONCRETE SURFACE COURSE, TYPE S9.5C, AT AN AVERAGE RATE OF 168 LBS. PER SQ. YD.
E	SHOULDER RECONSTRUCTION
F	MILL ASPHALT PAVEMENT APPROX. 1½" AS DIRECTED BY ENGINEER
G	MILL ASPHALT PAVEMENT APPROX. 3" - 4.5" AS DIRECTED BY ENGINEER
H	MILL ASPHALT PAVEMENT APPROX. 1½" - 4.5" AS DIRECTED BY ENGINEER
J	MILL ASPHALT PAVEMENT APPROX. 3" AS DIRECTED BY ENGINEER
K	MILL ASPHALT PAVEMENT APPROX. 1½" - 3" AS DIRECTED BY ENGINEER

NOTE: PAVEMENT EDGE SLOPES ARE 1:1 UNLESS SHOWN OTHERWISE.
MILL BRIDGE APPROACHES 100' TO PROVIDE A SMOOTH TRANSITION AS DIRECTED.

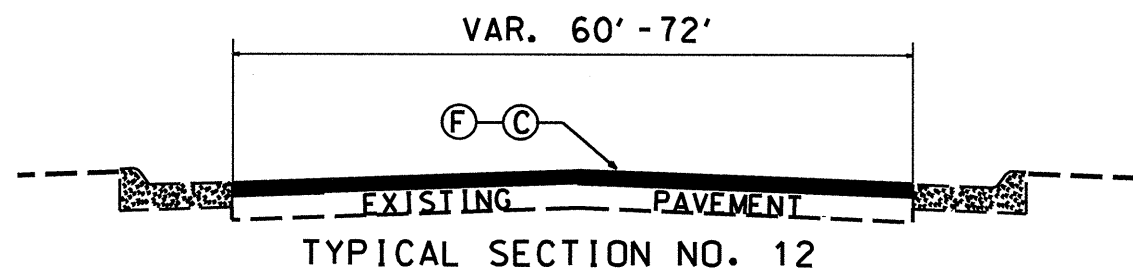
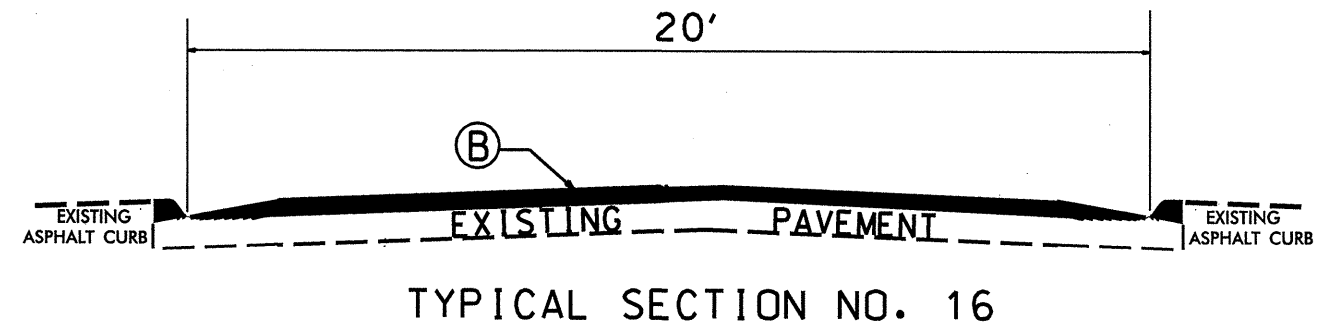
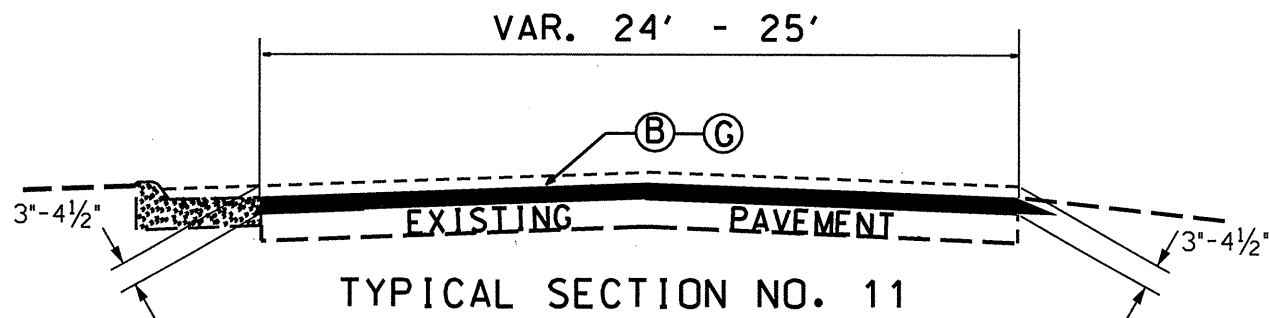
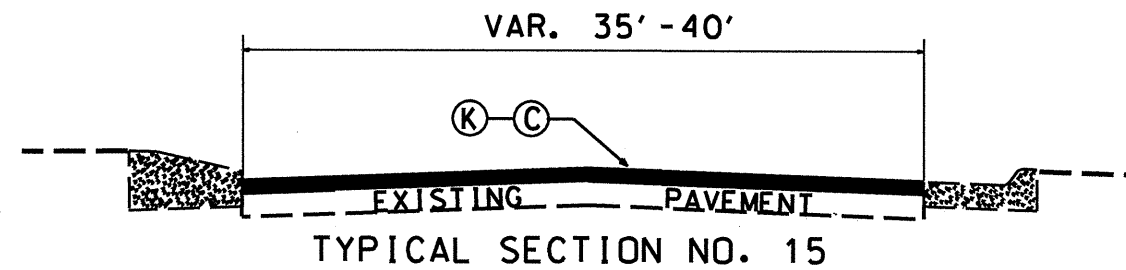
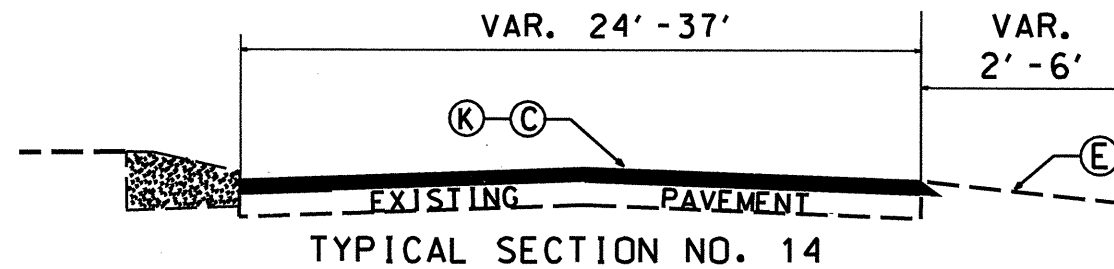
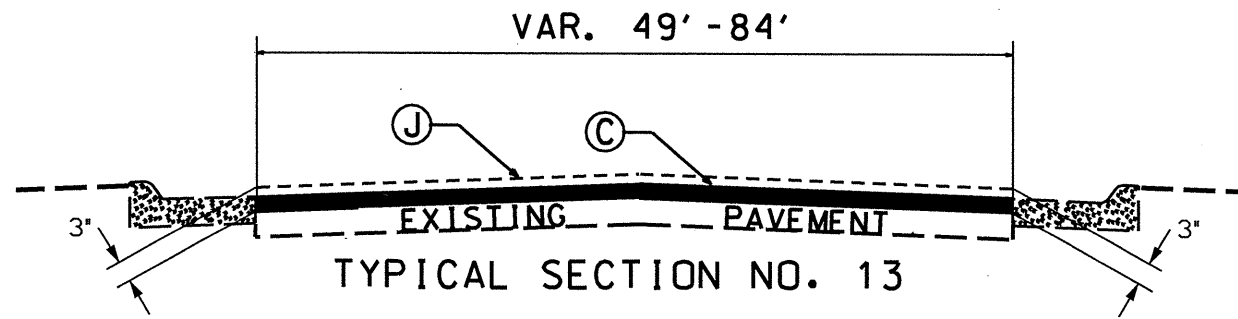


PROJ. REFERENCE NO.	SHEET NO.	TOTAL SHEETS
GASTON COUNTY 2010	12	
STATE PROJ. NO.	F. A. PROJ. NO.	DESCRIPTION
12CR.10361.11		
12CR.20361.11		

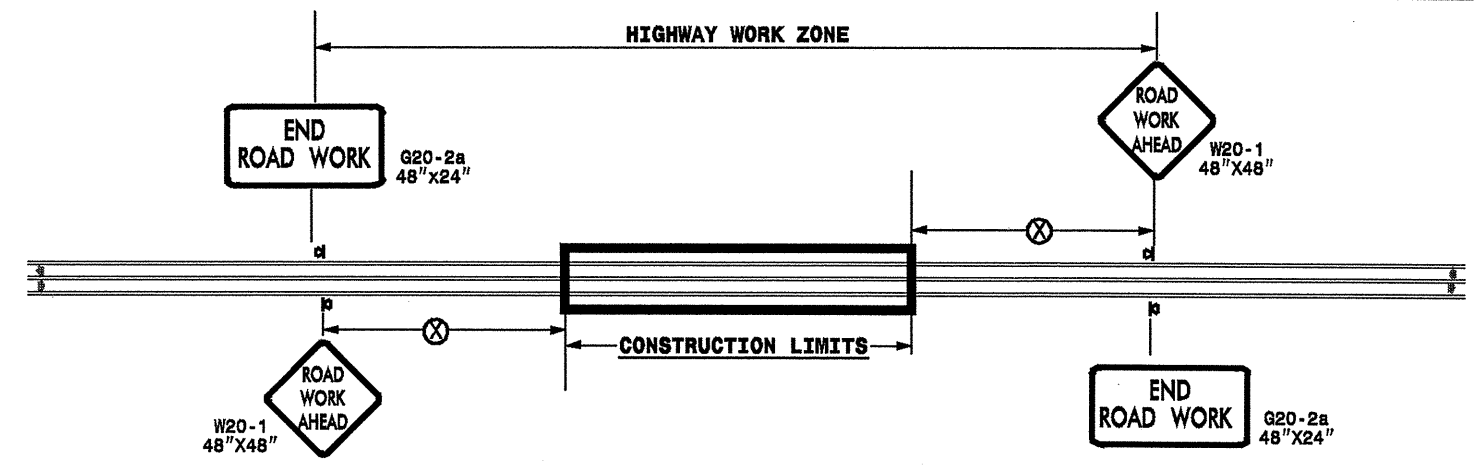
PAVEMENT SCHEDULE	
A	PROP. APPROX. 5.5" ASPHALT CONCRETE BASE COURSE, TYPE B25.0B, AT AN AVERAGE RATE OF 627 LBS. PER SQ. YD.
B	PROP. APPROX. 1½" ASPHALT CONCRETE SURFACE COURSE, TYPE S9.5B, AT AN AVERAGE RATE OF 168 LBS. PER SQ. YD.
C	PROP. APPROX. 1½" ASPHALT CONCRETE SURFACE COURSE, TYPE S9.5C, AT AN AVERAGE RATE OF 168 LBS. PER SQ. YD.
E	SHOULDER RECONSTRUCTION
F	MILL ASPHALT PAVEMENT APPROX. 1½" AS DIRECTED BY ENGINEER
G	MILL ASPHALT PAVEMENT APPROX. 3" - 4.5" AS DIRECTED BY ENGINEER
H	MILL ASPHALT PAVEMENT APPROX. 1½" - 4.5" AS DIRECTED BY ENGINEER
J	MILL ASPHALT PAVEMENT APPROX. 3" AS DIRECTED BY ENGINEER
K	MILL ASPHALT PAVEMENT APPROX. 1½" - 3" AS DIRECTED BY ENGINEER

NOTE: PAVEMENT EDGE SLOPES ARE 1:1 UNLESS SHOWN OTHERWISE.

MILL BRIDGE APPROACHES 100' TO PROVIDE A SMOOTH TRANSITION AS DIRECTED.



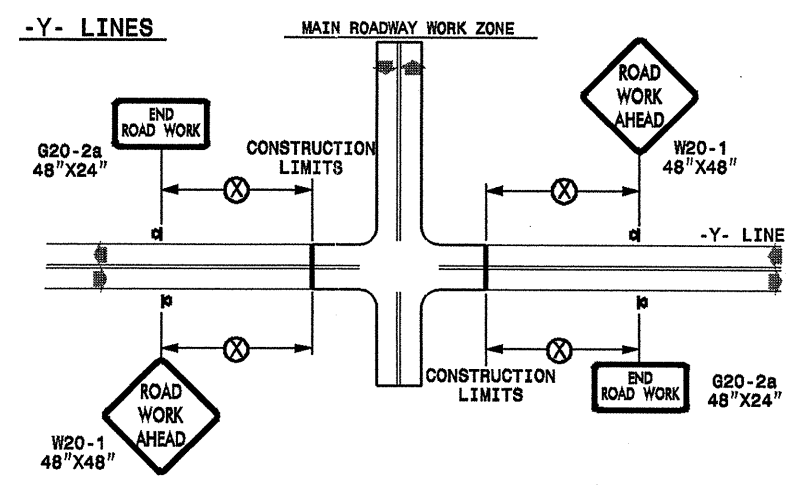
TWO-WAY UNDIVIDED ** (L-LINES)



POSTED SPEED LIMIT (M.P.H.)	RECOMMENDED MINIMUM SIGN SPACING
≤ 50	500'
≥ 55	1000'

STATE OF NORTH CAROLINA
DEPT. OF TRANSPORTATION
DIVISION OF HIGHWAYS
RALEIGH, N.C.

ROADWAYS INTERSECTING ALONG 2 WAY UNDIVIDED WORK ZONE (Y-LINES)



DETAIL DRAWING
FOR TWO-WAY UNDIVIDED
WORK ZONE WARNING SIGNS

GENERAL NOTES

- USE FLUORESCENT ORANGE SHEETING (TYPE VII OR HIGHER) ON ALL ADVANCE WORK ZONE SIGNS.
- DO NOT INSTALL ADVANCE WARNING SIGNS MORE THAN 3 DAYS PRIOR TO BEGINNING OF WORK.
- ALL SIGN SPACING DIMENSIONS ARE APPROXIMATE, FIELD ADJUST AS NECESSARY OR AS DIRECTED.
- USE PORTABLE WORK ZONE SIGNS ONLY WITH PORTABLE WORK ZONE SIGN STANDS SPECIFICALLY DESIGNED FOR ONE ANOTHER. PORTABLE WORK ZONE SIGNS MAY BE ROLL UP OR APPROVED COMPOSITE.
- PROVIDE PORTABLE WORK ZONE SIGN STANDS, PORTABLE SIGNS AND SIGN SHEETING WHICH ARE LISTED ON THE NORTH CAROLINA DEPARTMENT OF TRANSPORTATION'S APPROVED PRODUCT LIST OR ACCEPTED AS TRAFFIC QUALIFIED BY THE TRAFFIC CONTROL UNIT.
- ** TWO-WAY UNDIVIDED ADVANCE WARNING SIGN CONFIGURATION MAY BE USED ON URBAN MULTI-LANE FACILITIES WHERE CONDITIONS LIMIT THE USE OF DUAL MOUNTED SIGNS AS DETERMINED BY THE ENGINEER.

LEGEND

◀ PORTABLE SIGN

➔ DIRECTION OF TRAFFIC FLOW

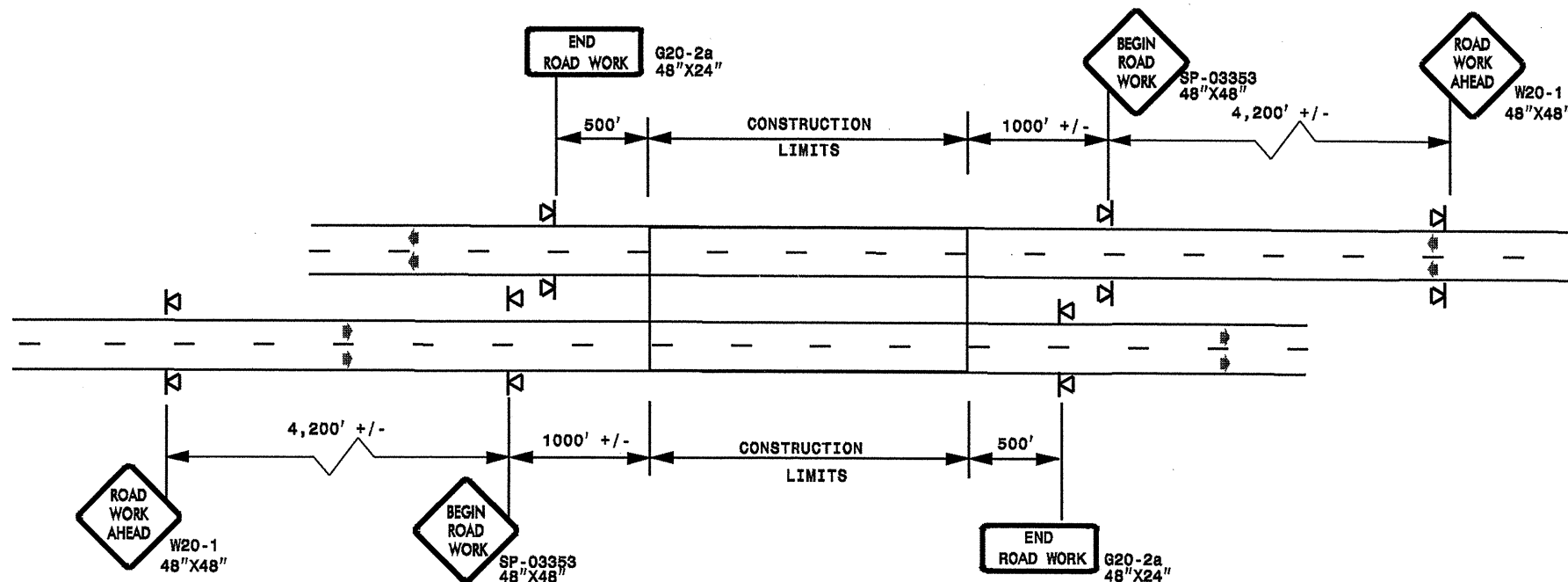
SHEET 1 OF 1

APPROVED: _____ DATE: _____	<p>DETAIL DRAWING FOR TWO-WAY UNDIVIDED ADVANCED WORK ZONE WARNING SIGNS</p>								
SEAL									
SCALE: NONE									
DATE: _____									
DESIGN BY: _____									
REVIEWED BY: _____									
	<table border="1"> <thead> <tr> <th colspan="2">REVISIONS</th> </tr> </thead> <tbody> <tr> <td>7-98</td> <td>10/01</td> </tr> <tr> <td>10-98</td> <td>03/04</td> </tr> <tr> <td>01/01</td> <td>11/04</td> </tr> </tbody> </table>	REVISIONS		7-98	10/01	10-98	03/04	01/01	11/04
REVISIONS									
7-98	10/01								
10-98	03/04								
01/01	11/04								

29-OCT-2009 11:16
 s:\signing\resur_fg\sig_030509\resur_fg\sig_030509\div2\c202494g-b-12cr10381x2-2wayundivurbfrwysjuly2006_portable.dgn
 AT WZTC237502
 psymore

ADVANCE WORK ZONE WARNING SIGNING FOR FREEWAYS (4 LANES OR GREATER)

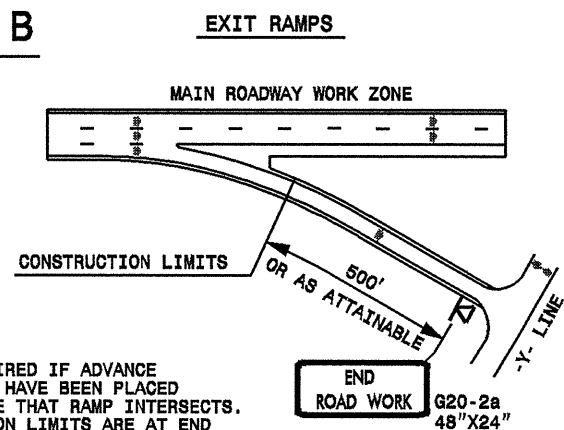
DETAIL A



STATE OF NORTH CAROLINA
DEPT. OF TRANSPORTATION
DIVISION OF HIGHWAYS
RALEIGH, N.C.

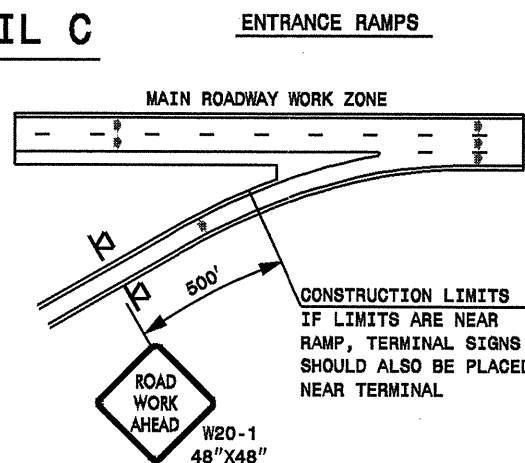
ROADWAYS INTERSECTING ALONG FREEWAY WORK ZONE (Y-LINES)

DETAIL B



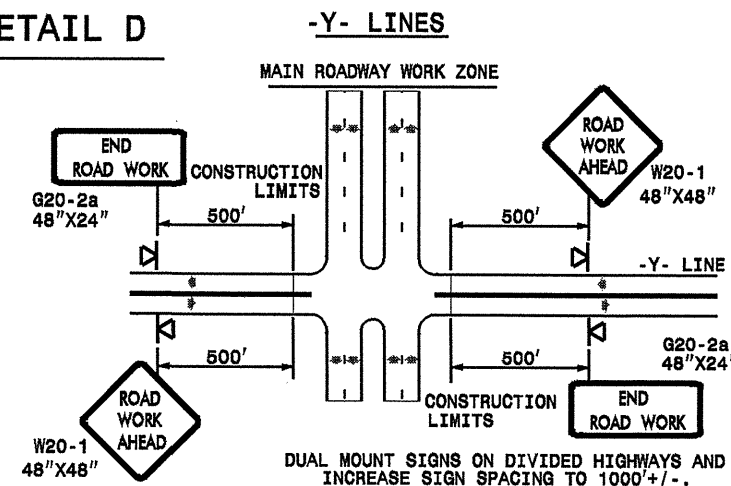
NOTE:
SIGN NOT REQUIRED IF ADVANCE WARNING SIGNS HAVE BEEN PLACED ALONG -Y- LINE THAT RAMP INTERSECTS. IF CONSTRUCTION LIMITS ARE AT END OF RAMP, PLACE SIGN AT END OF RAMP.

DETAIL C



CONSTRUCTION LIMITS IF LIMITS ARE NEAR RAMP, TERMINAL SIGNS SHOULD ALSO BE PLACED NEAR TERMINAL

DETAIL D



GENERAL NOTES

- USE FLUORESCENT ORANGE SHEETING (TYPE VII OR HIGHER) ON ALL ADVANCE WORK ZONE SIGNS.
- DO NOT INSTALL ADVANCE WARNING SIGNS MORE THAN 3 DAYS PRIOR TO BEGINNING OF WORK.
- ALL SIGN SPACING DIMENSIONS ARE APPROXIMATE, FIELD ADJUST AS NECESSARY OR AS DIRECTED.
- USE PORTABLE WORK ZONE SIGNS ONLY WITH PORTABLE WORK ZONE SIGN STANDS SPECIFICALLY DESIGNED FOR ONE ANOTHER. PORTABLE WORK ZONE SIGNS MAY BE ROLL UP OR APPROVED COMPOSITE.
- PROVIDE PORTABLE WORK ZONE SIGN STANDS, PORTABLE SIGNS AND SIGN SHEETING WHICH ARE LISTED ON THE NORTH CAROLINA DEPARTMENT OF TRANSPORTATION'S APPROVED PRODUCT LIST OR ACCEPTED AS TRAFFIC QUALIFIED BY THE TRAFFIC CONTROL UNIT.
- ** TWO-WAY UNDIVIDED ADVANCE WARNING SIGN CONFIGURATION MAY BE USED ON MULTI-LANE FACILITIES WHERE CONDITIONS LIMIT THE USE OF DUAL MOUNTED SIGNS AS DETERMINED BY THE ENGINEER.

LEGEND

▲ PORTABLE SIGN

➔ DIRECTION OF TRAFFIC FLOW

DETAIL DRAWING
FOR FREEWAYS
WORK ZONE WARNING SIGNS
(SHORT-DURATION LANE CLOSURES)

SHEET 1 OF 1

APPROVED: _____ DATE: _____	<p>DETAIL DRAWING FOR FREEWAYS WORK ZONE WARNING SIGNS</p>		REVISIONS	
SEAL			SCALE: NONE	7-98
			10-98	09/04
			01/01	11/04
			DESIGN BY: _____	
			REVIEWED BY: _____	

29-OCT-2009 11:28
 s:\signing\resur-fac\sig\030509\resur-fac\sig\030509\div2\c202494a-b.l2cr10361x2.gaston.us32m3\c202494a-b.l2cr10361x2.free4lanesgreatJuly2006.por-table.dgn
 AT WZTC237502
 pseymore