

**TIP PROJECT: B-4072**

STATE OF NORTH CAROLINA  
DIVISION OF HIGHWAYS

---

PLAN FOR PROPOSED  
HIGHWAY EROSION CONTROL

**CHEROKEE COUNTY**

**LOCATION: BRIDGE NO. 98 OVER BRASSTOWN CREEK OVERRUN  
ON SR 1564 (BRASSTOWN RD.)**

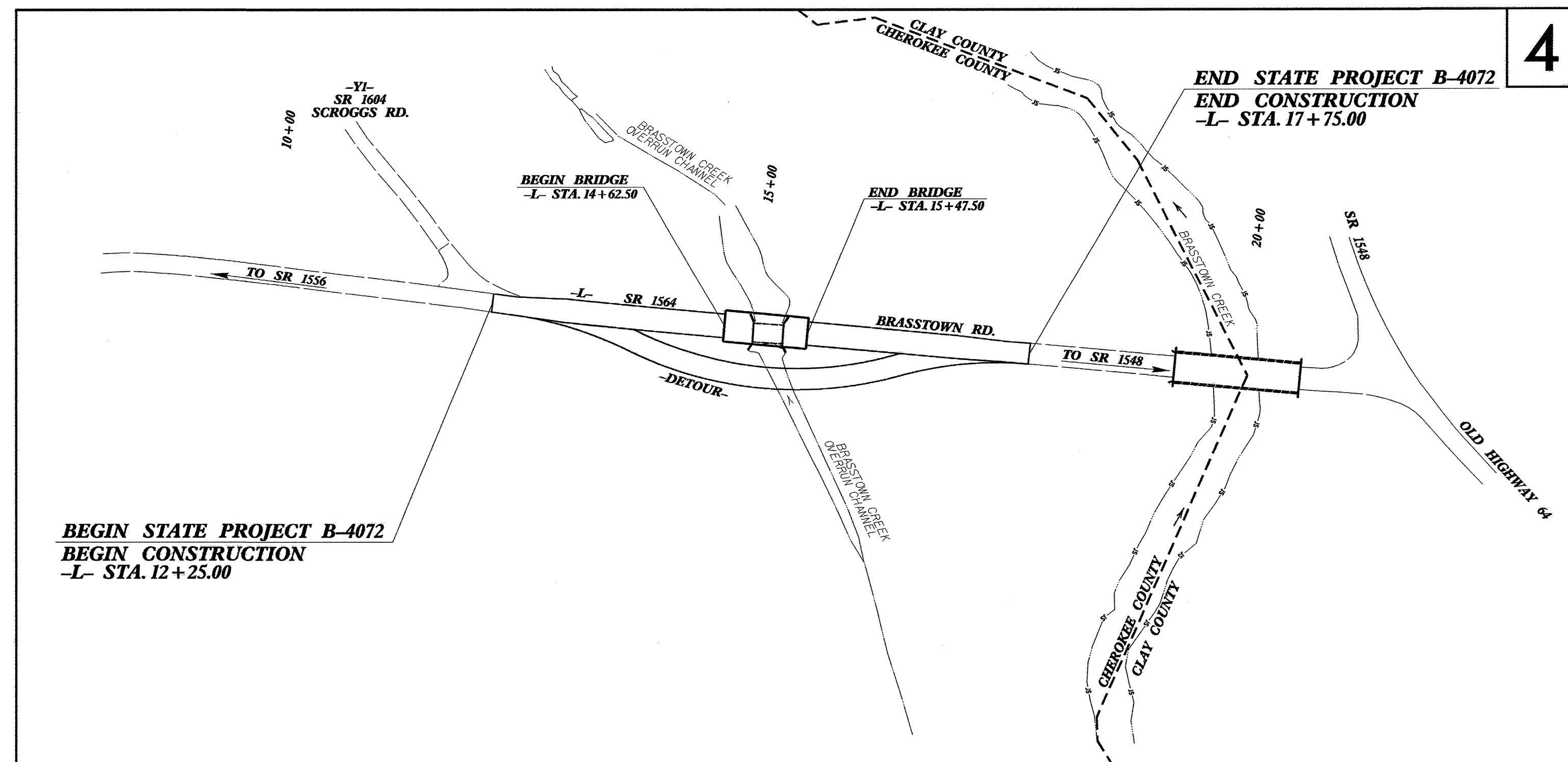
**TYPE OF WORK: GRADING, PAVING, DRAINAGE & STRUCTURE**

STATE	STATE PROJECT REFERENCE NO.	SHEET NO.	TOTAL SHEETS
N.C.	B-4072	EC-1	
STATE PROJ. NO.	F.A. PROJ. NO.	DESCRIPTION	

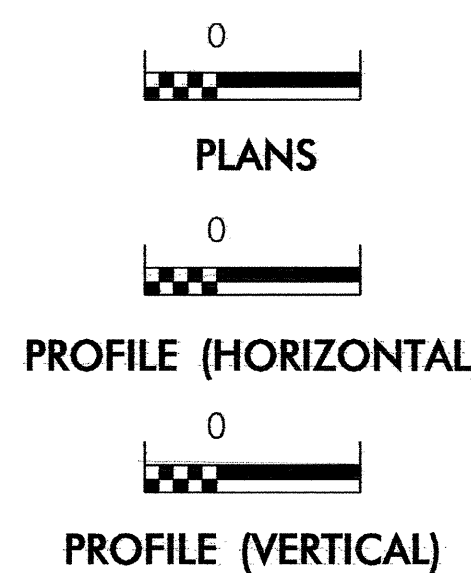
**EROSION AND SEDIMENT CONTROL MEASURES**

Std. #	Description	Symbol
1630.03	Temporary Silt Ditch	
1630.05	Temporary Diversion	
1605.01	Temporary Silt Fence	
1606.01	Special Sediment Control Fence	
1622.01	Temporary Berms and Slope Drains	
1630.01	Riser Basin	
	Silt Basin Type B	
1633.01	Temporary Rock Silt Check Type-A	
	Temporary Rock Silt Check Type-B	
	Wattle	
1634.01	Temporary Rock Sediment Dam Type-A	
1634.02	Temporary Rock Sediment Dam Type-B	
1635.01	Rock Pipe Inlet Sediment Trap Type-A	
1635.02	Rock Pipe Inlet Sediment Trap Type-B	
1630.04	Stilling Basin	
1630.06	Special Stilling Basin	
	Rock Inlet Sediment Trap:	
1632.01	Type A	
1632.02	Type B	
1632.03	Type C	
	Skimmer Basin	
	Tiered Skimmer Basin	
	Infiltration Basin	

**THIS PROJECT CONTAINS  
EROSION CONTROL PLANS  
FOR CLEARING AND  
GRUBBING PHASE OF  
CONSTRUCTION.**



**GRAPHIC SCALE**



ROADSIDE ENVIRONMENTAL UNIT  
DIVISION OF HIGHWAYS  
STATE OF NORTH CAROLINA

Prepared In the Office of:  
**ROADSIDE ENVIRONMENTAL UNIT**  
1 South Wilmington St.  
Raleigh, NC 27611  
**2006 STANDARD SPECIFICATIONS**

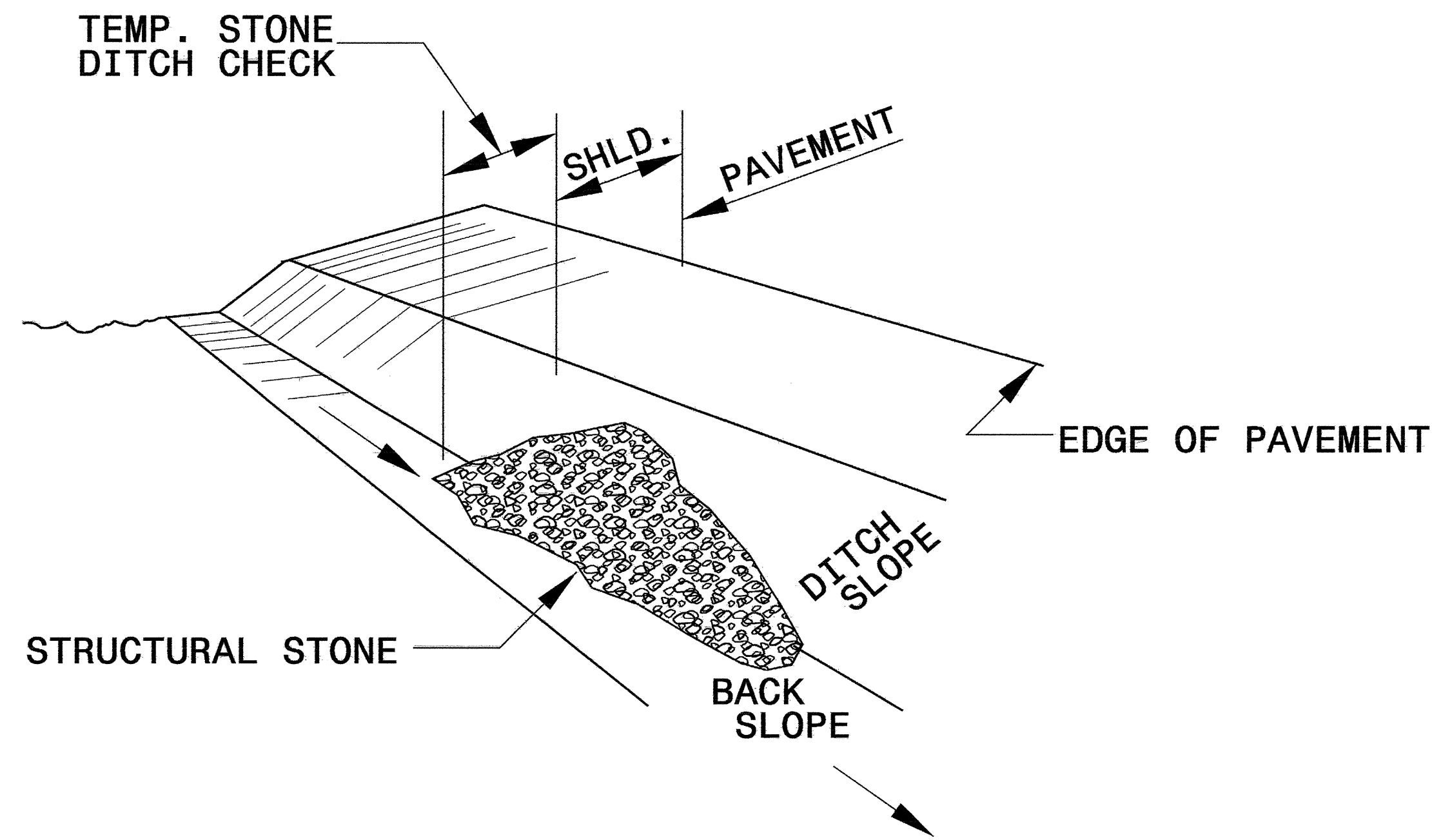
**Roadway Standard Drawings**

The following roadway english standards as appear in "Roadway Standard Drawings"- Roadway Design Unit - N. C. Department of Transportation - Raleigh, N. C., dated July 18, 2006 and the latest revision thereto are applicable to this project and by reference hereby are considered a part of these plans.

- |                                      |  |
|--------------------------------------|--|
| 1605.01 Temporary Silt Fence         | 1632.03 Rock Inlet Sediment Trap Type C  |
| 1607.01 Gravel Construction Entrance | 1633.01 Temporary Rock Silt Check Type A |
| 1630.03 Temporary Silt Ditch         |  |

PROJECT REFERENCE NO. <i>B-4072</i>	SHEET NO. <i>EC-2</i>
RW SHEET NO.	
ROADWAY DESIGN ENGINEER	HYDRAULICS ENGINEER

# TEMPORARY ROCK SILT CHECK TYPE 'B' DETAIL

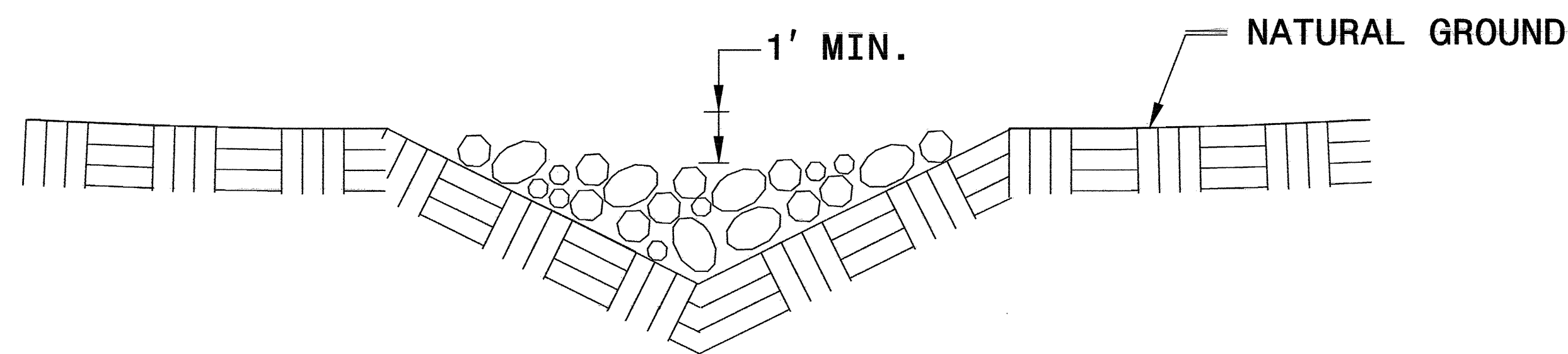


**ISOMETRIC VIEW**

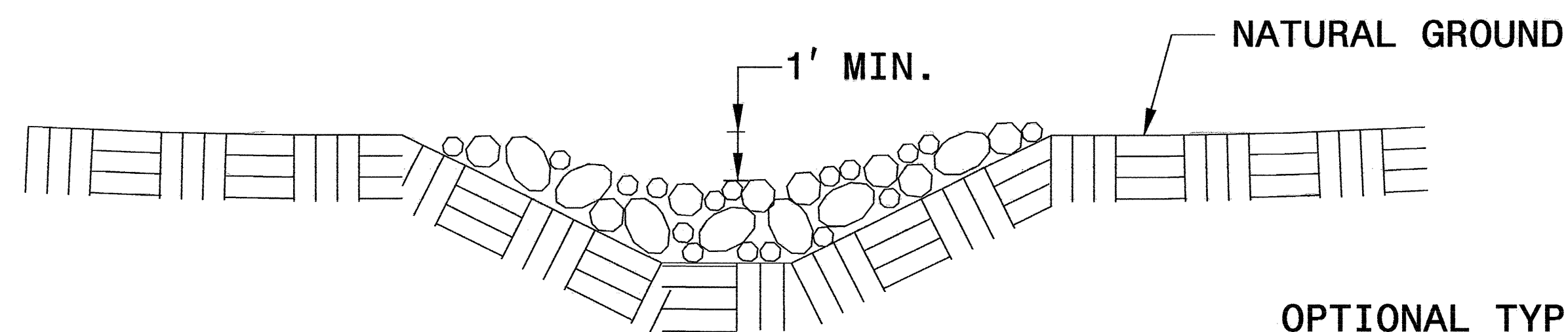
**NOTES:**

USE CLASS 'B' EROSION CONTROL STONE FOR STRUCTURAL STONE.

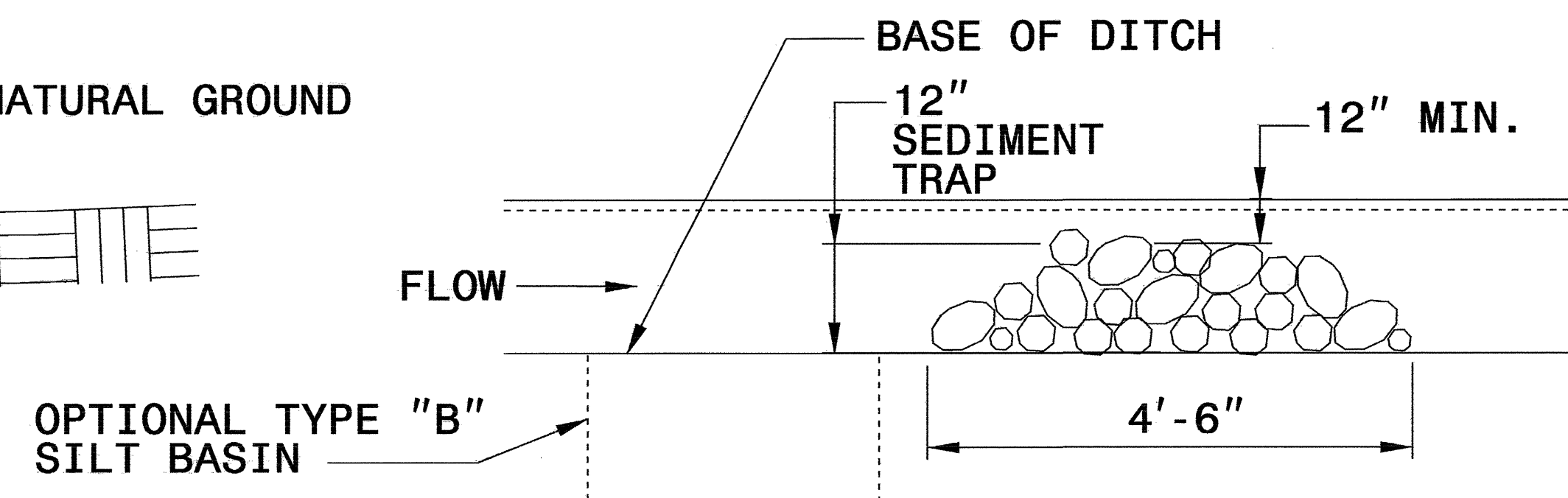
THE ENGINEER MAY DIRECT THE OPTION OF CLASS "A" STONE FOR SITES HAVING LESS THAN ONE (1) ACRE DRAINAGE AREA AND A DITCH GRADE LESS THAN 3%.



**CROSS SECTION VEE DITCH**



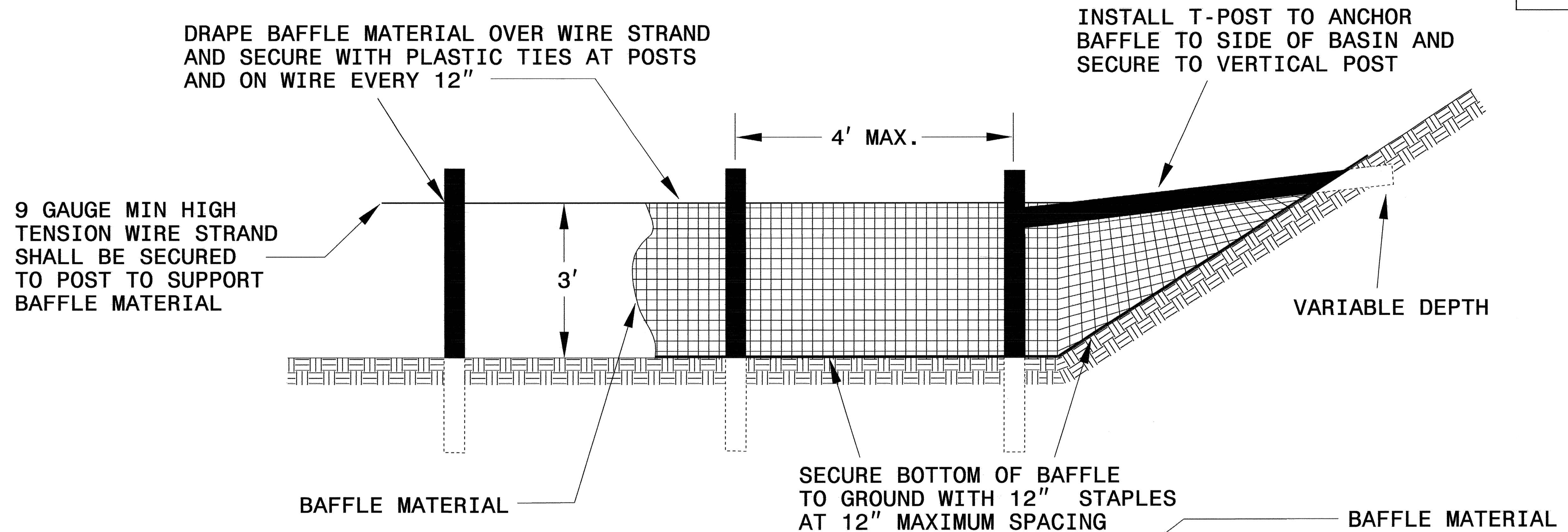
**CROSS SECTION TRAPEZOIDAL DITCH**



**ELEVATION VIEW**

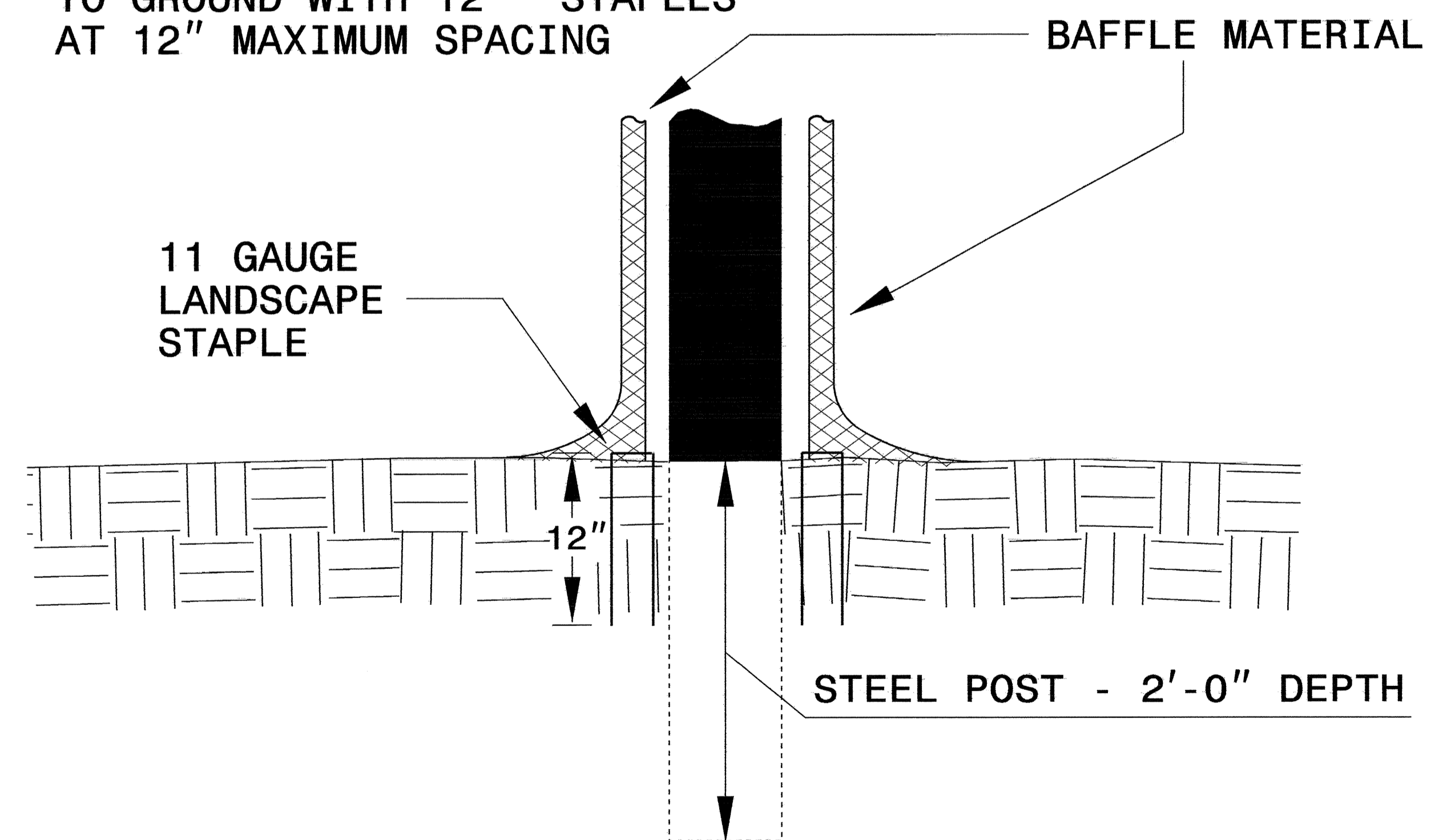
PROJECT REFERENCE NO. B-4072	SHEET NO. EC-2A
RW SHEET NO.	
ROADWAY DESIGN ENGINEER	HYDRAULICS ENGINEER

# COIR FIBER BAFFLE DETAIL



**NOTES:**

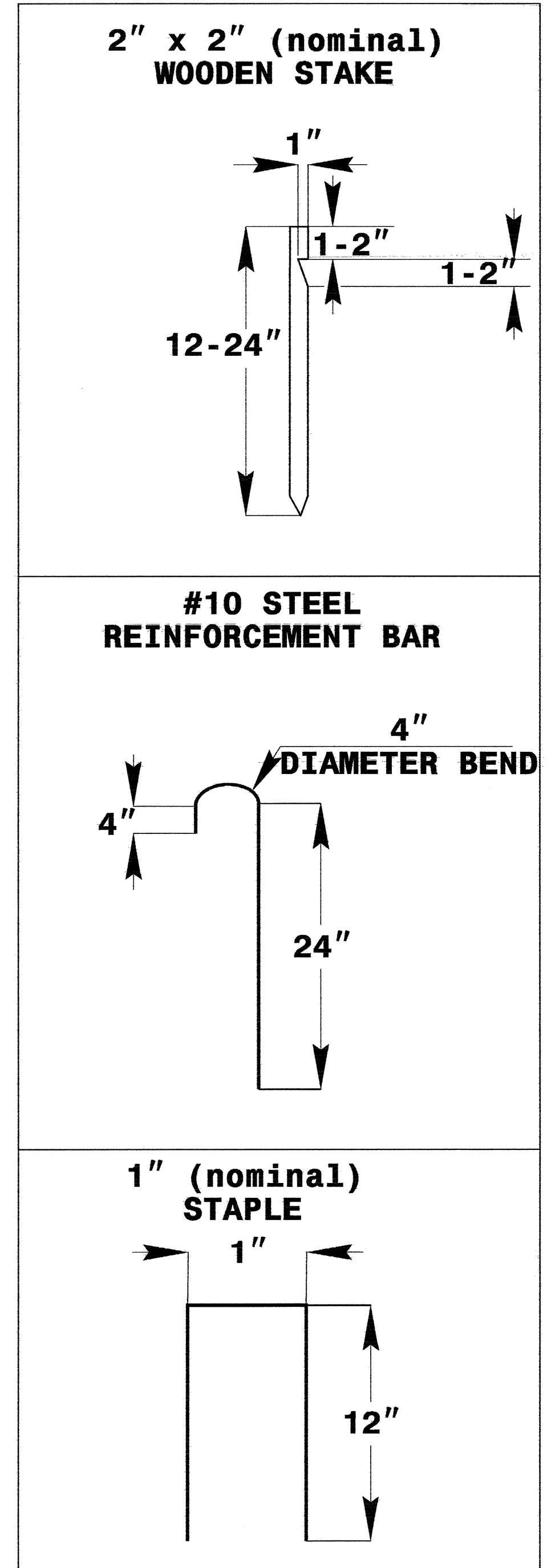
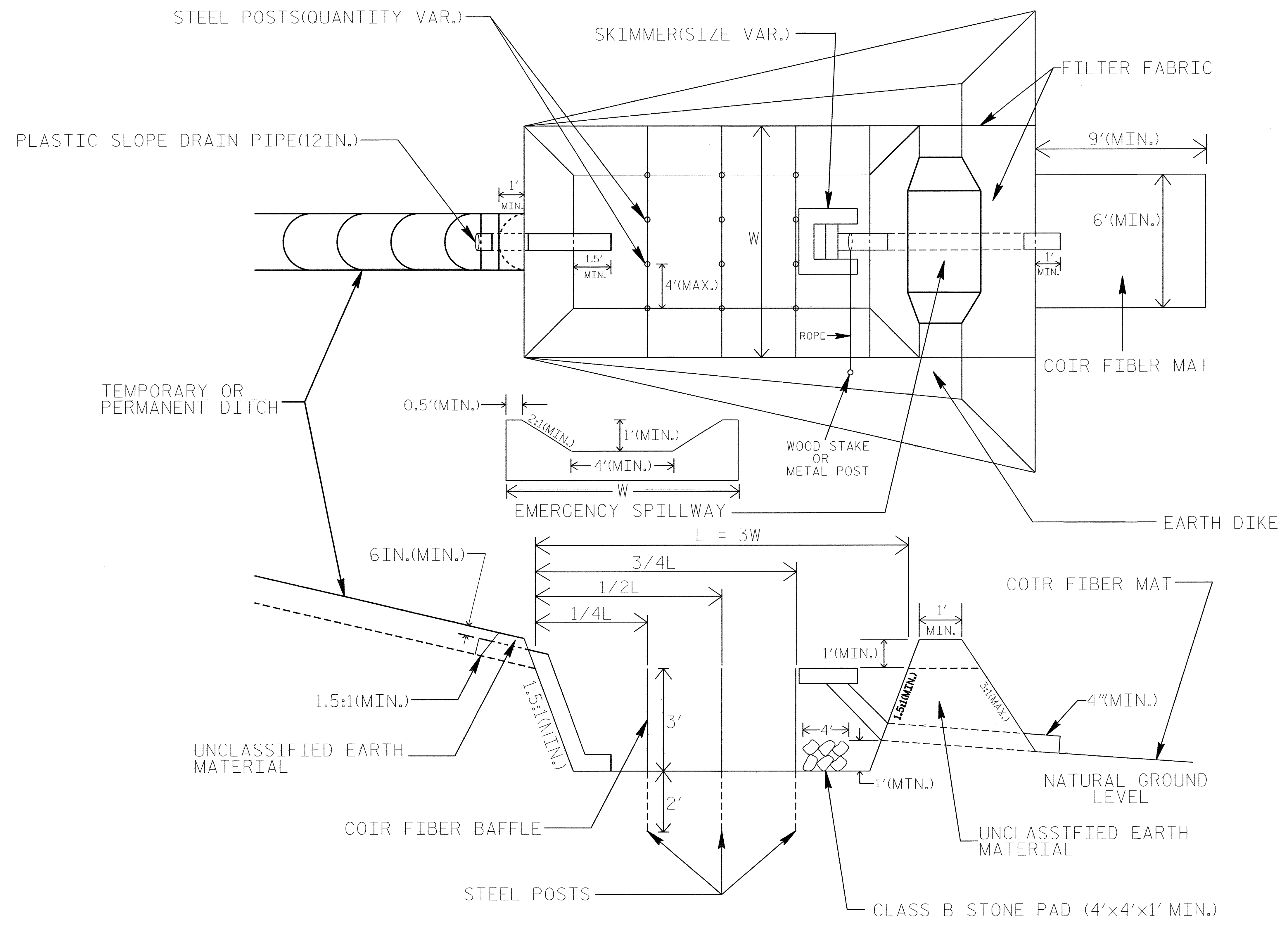
1. INSTALL THREE (3) COIR FIBER BAFFLES IN SILT BASINS AND SEDIMENT DAMS AT DRAINAGE OUTLETS WITH A SPACING OF  $\frac{1}{4}$  THE BASIN LENGTH.
2. TWO (2) COIR FIBER BAFFLES CAN BE INSTALLED IN SILT BASINS AND DAMS LESS THAN 20 FT. IN LENGTH WITH A SPACING OF  $\frac{1}{3}$  THE BASIN LENGTH.
3. TOP HEIGHT OF COIR FIBER BAFFLES SHALL NOT BE BELOW BASE OF EMERGENCY SPILLWAY ELEVATION.



BAFFLE MATERIAL SHALL BE SECURED TO THE BOTTOM AND SIDES OF BASIN USING 12" LANDSCAPE STAPLES

# SKIMMER BASIN WITH BAFFLES DETAIL

PROJECT REFERENCE NO. B-4072	SHEET NO. EC-2B
RW SHEET NO.	
ROADWAY DESIGN ENGINEER	HYDRAULICS ENGINEER



**COIR FIBER MAT ANCHOR OPTIONS**

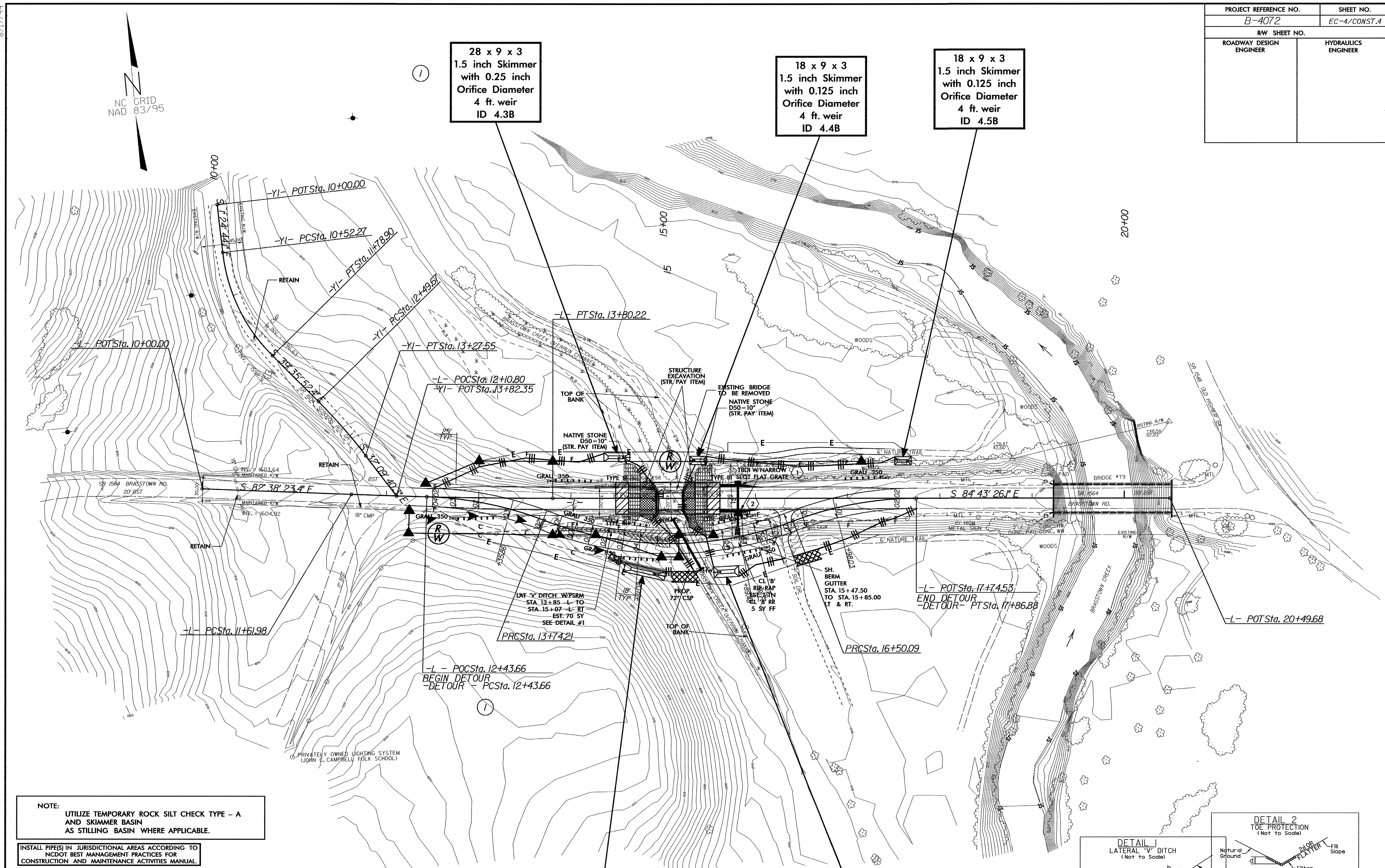
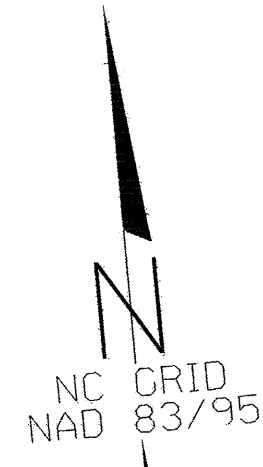
**NOTES**

1. SEED AND PLACE MATTING FOR EROSION CONTROL ON INTERIOR SIDESLOPES.
2. LIMIT EARTH DIKE HEIGHT TO 5 FT.
3. THE MINIMUM BASIN WIDTH SHALL BE 9 FT.
4. DETERMINE EMERGENCY SPILLWAY LENGTH (FT.) USING  $Q/0.8$ , WHERE Q IS FLOW RATE (CFS) INTO BASIN.

NOT TO SCALE



PROJECT REFERENCE NO. B-4072	SHEET NO. EC-4/CONST.4
RW SHEET NO.	
ROADWAY DESIGN ENGINEER	HYDRAULICS ENGINEER

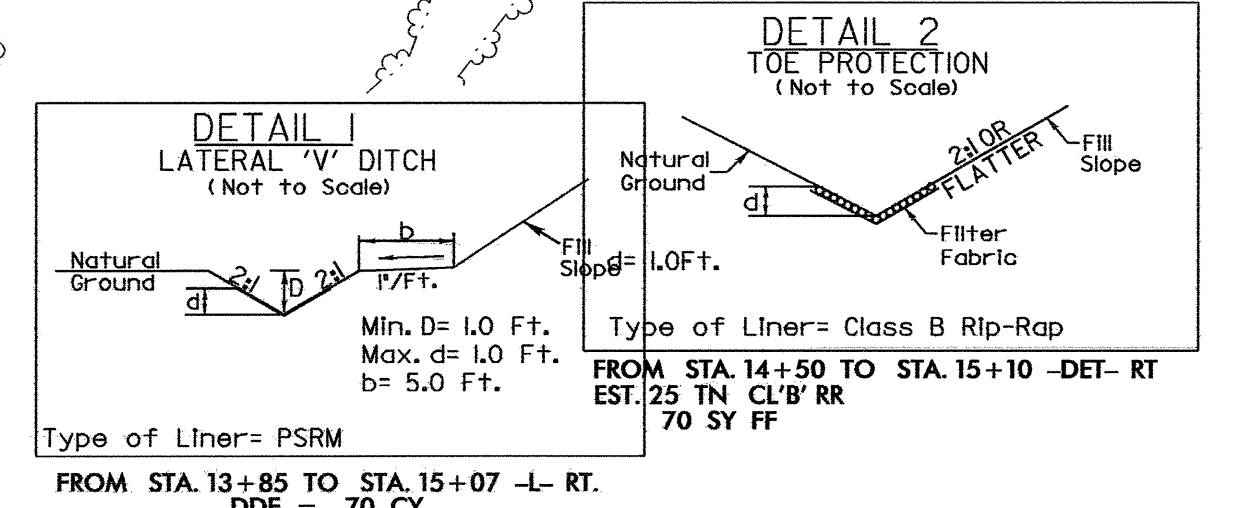


NOTE: UTILIZE TEMPORARY ROCK SILT CHECK TYPE - A AND SKIMMER BASIN AS STILLING BASIN WHERE APPLICABLE.

INSTALL PIPES IN JURISDICTIONAL AREAS ACCORDING TO NCDOT BEST MANAGEMENT PRACTICES FOR CONSTRUCTION AND MAINTENANCE ACTIVITIES MANUAL.

CLEARING AND GRUBBING EROSION CONTROL FOR CONSTRUCTION SHEET 4

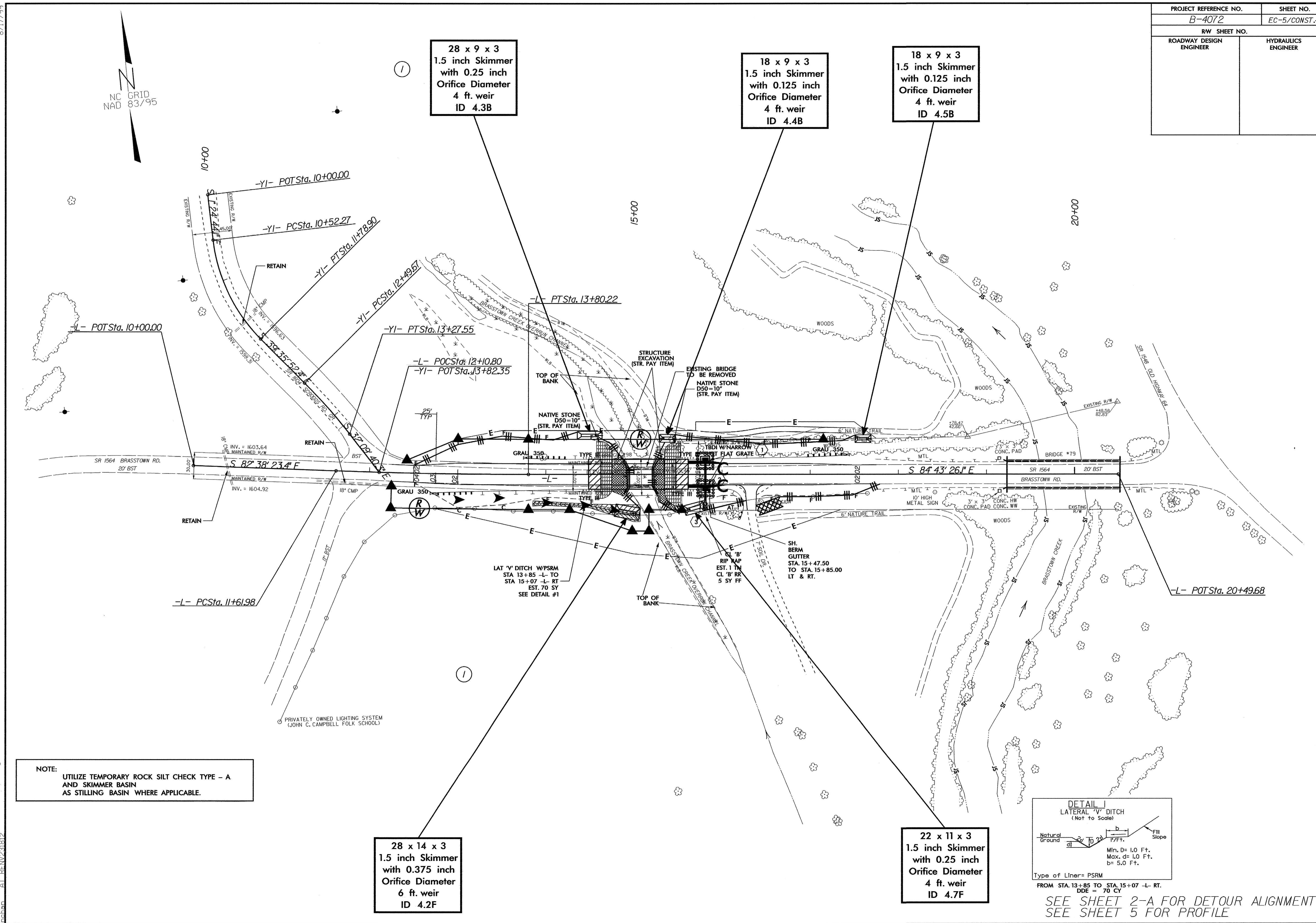
NOTE: PLACE TEMPORARY ROCK SEDIMENT DAMS TYPE - B AND TEMPORARY ROCK SILT CHECKS TYPE - A AT DRAINAGE OUTLETS.



SEE SHEET 2-A FOR DETOUR ALIGNMENT  
SEE SHEET 5 FOR PROFILE

8/17/99  
24-MAR-2009 14:11 \\design\l\4072-ec\ps\sh.dgn  
F:\envr\proj\BREV\218131\

PROJECT REFERENCE NO.	SHEET NO.
B-4072	EC-5/CONST.4
RW SHEET NO.	
ROADWAY DESIGN ENGINEER	HYDRAULICS ENGINEER



28 x 9 x 3  
1.5 inch Skimmer  
with 0.25 inch  
Orifice Diameter  
4 ft. weir  
ID 4.3B

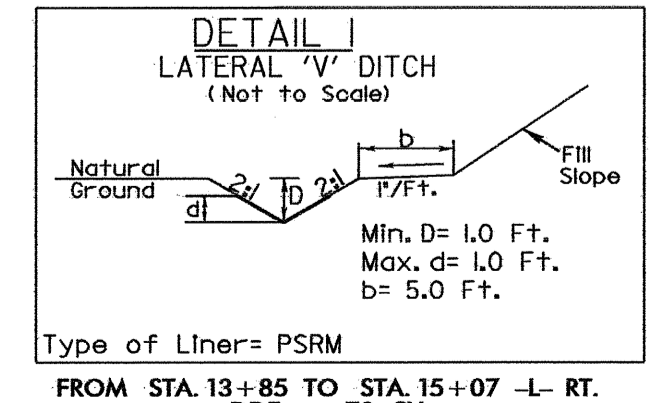
18 x 9 x 3  
1.5 inch Skimmer  
with 0.125 inch  
Orifice Diameter  
4 ft. weir  
ID 4.4B

18 x 9 x 3  
1.5 inch Skimmer  
with 0.125 inch  
Orifice Diameter  
4 ft. weir  
ID 4.5B

28 x 14 x 3  
1.5 inch Skimmer  
with 0.375 inch  
Orifice Diameter  
6 ft. weir  
ID 4.2F

22 x 11 x 3  
1.5 inch Skimmer  
with 0.25 inch  
Orifice Diameter  
4 ft. weir  
ID 4.7F

NOTE:  
UTILIZE TEMPORARY ROCK SILT CHECK TYPE - A  
AND SKIMMER BASIN  
AS STILLING BASIN WHERE APPLICABLE.



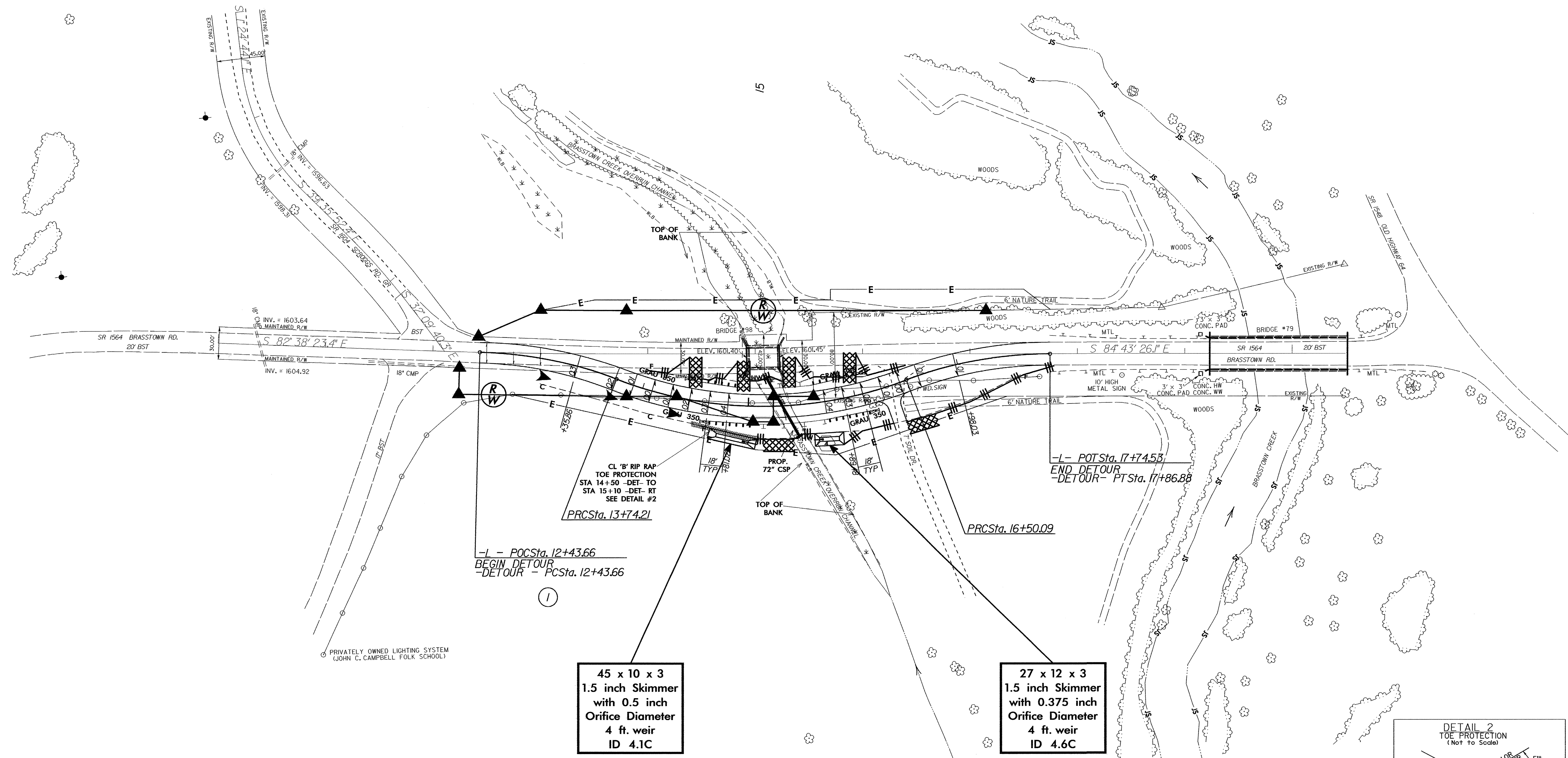
SEE SHEET 2-A FOR DETOUR ALIGNMENT  
SEE SHEET 5 FOR PROFILE

8/17/99  
24-MAR-2009 14:12  
C:\p1\work\design\4072\ec-ps-h.dgn  
C:\p1\work\design\4072\ec-ps-h.dgn  
C:\p1\work\design\4072\ec-ps-h.dgn

8/17/99

PROJECT REFERENCE NO.	SHEET NO.
B-4072	EC-6/CONST.2A
RW SHEET NO.	
ROADWAY DESIGN ENGINEER	HYDRAULICS ENGINEER

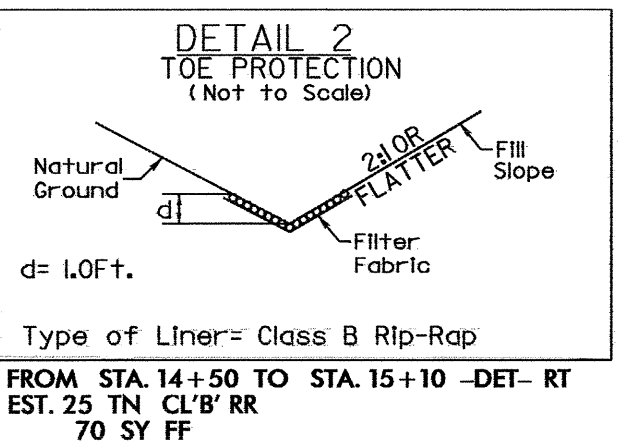
# DETOUR



INSTALL PIPE(S) IN JURISDICTIONAL AREAS ACCORDING TO NCDOT BEST MANAGEMENT PRACTICES FOR CONSTRUCTION AND MAINTENANCE ACTIVITIES MANUAL.

45 x 10 x 3  
1.5 inch Skimmer  
with 0.5 inch  
Orifice Diameter  
4 ft. weir  
ID 4.1C

27 x 12 x 3  
1.5 inch Skimmer  
with 0.375 inch  
Orifice Diameter  
4 ft. weir  
ID 4.6C



SEE SHEET 4 FOR -L- ALIGNMENT  
SEE SHEET 5 FOR PROFILE

24-MAR-2009 14:15  
C:\p1\work\2009\1415\ec-detour.pst.dgn  
1/28/09 10:28:18 AM