

09/08/09

STATE OF NORTH CAROLINA  
DIVISION OF HIGHWAYS

STATE PROJECT REFERENCE NO.	SHEET NO.	TOTAL SHEETS
I-5129	1	3

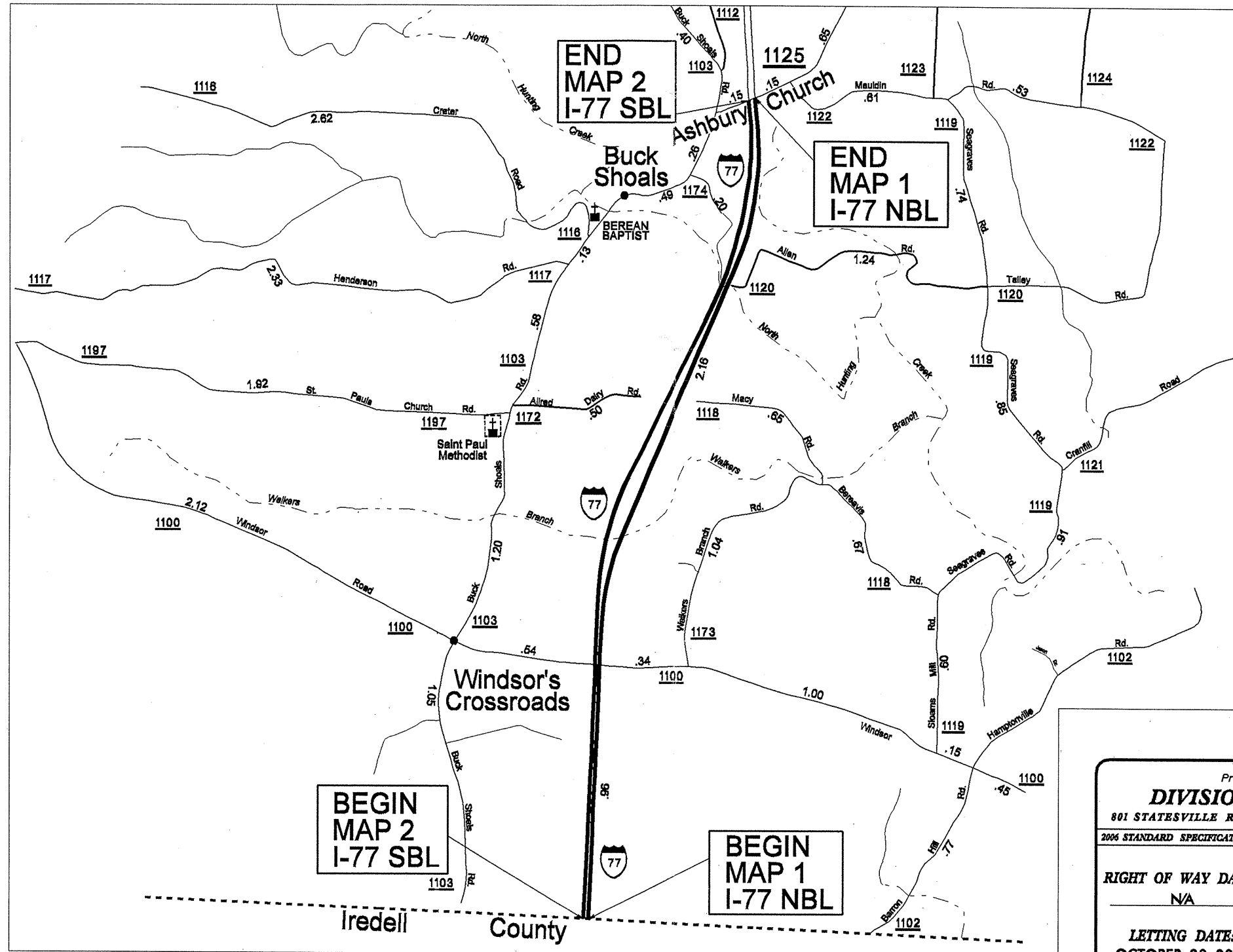
# YADKIN COUNTY

LOCATION: INTERSTATE 77 FROM IREDELL COUNTY LINE  
TO SR 1125 (ASHBURY CHURCH ROAD)

TYPE OF WORK: MILLING, RESURFACING, SHOULDER RECONSTRUCTION  
AND PAVEMENT MARKINGS

TIP PROJECT: I-5129

CONTRACT: C202394

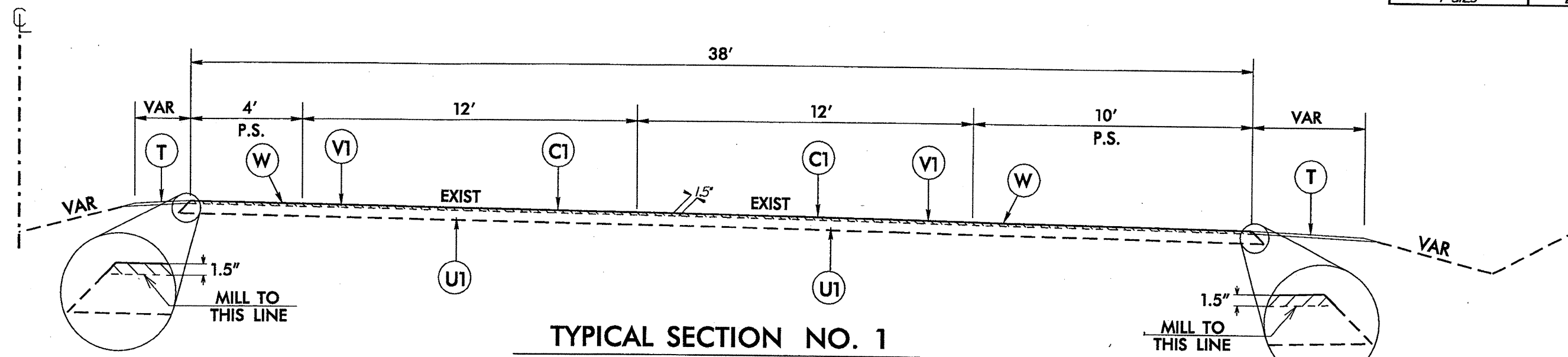


17-AUG-2009 08:38  
s:\contracts\resurfacing projects\division I\I-5129\I-5129-ddc.tsh\_072809.dgn  
\$\$\$\$\$USERNAME\$\$\$\$\$

Prepared in the Office of:  
**DIVISION OF HIGHWAYS**  
801 STATESVILLE ROAD, NORTH WILKESBORO, NC 28659  
2006 STANDARD SPECIFICATIONS

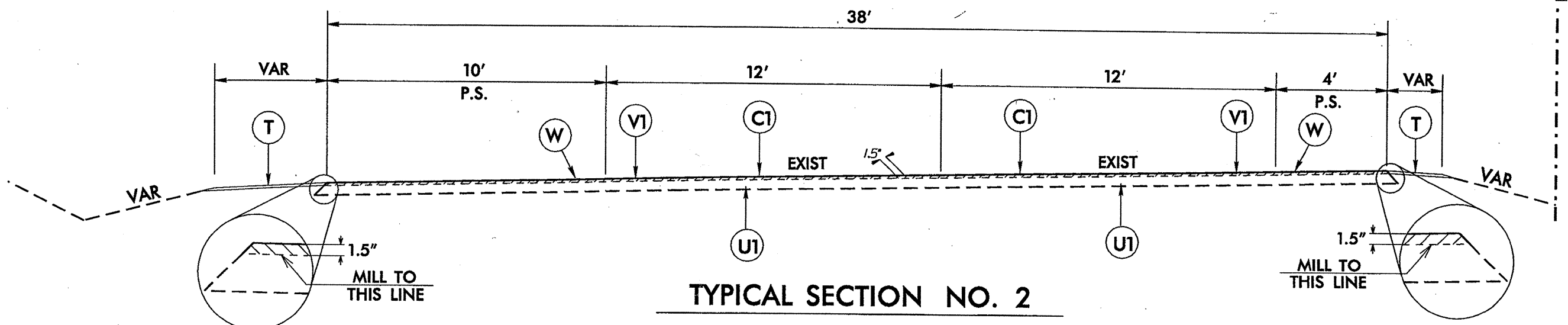
RIGHT OF WAY DATE: N/A	JOE L. LAWS, PE DIVISION PROJECT MANAGER
LETTING DATE: OCTOBER 20, 2009	MICHAEL A. PETTYJOHN, PE DIVISION ENGINEER

DIVISION OF HIGHWAYS  
STATE OF NORTH CAROLINA



**TYPICAL SECTION NO. 1**

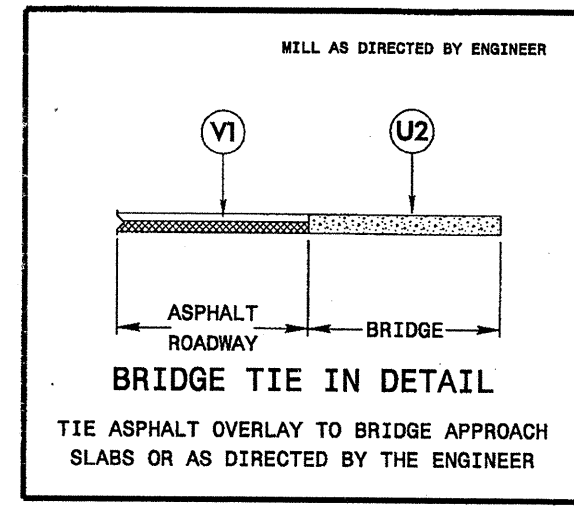
MAP #1 - I-77 NBL FROM IREDELL COUNTY LINE TO 300' SOUTH OF SR 1125 (3.12 MI)



**TYPICAL SECTION NO. 2**

MAP #2 - I-77 SBL FROM IREDELL COUNTY LINE TO 300' SOUTH OF SR 1125 (3.12 MI)

PAVEMENT SCHEDULE	
C1	1½" ASPHALT CONCRETE SURFACE COURSE, TYPE S 9.5 C, AT AN AVERAGE RATE OF 168 LBS. PER SQ. YD. (MILL AND FILL)
T	SHOULDER RECONSTRUCTION
U1	EXISTING PAVEMENT
U2	EXISTING BRIDGE DECK
V1	MILLING BITUMINOUS PAVEMENT - 1½" DEPTH
W	MILLED RUMBLE STRIPS



I-5129: I-77 FROM IREDELL COUNTY LINE TO 300' SOUTH OF SR 1125 (ASHBURY CHURCH ROAD)		
DIVISION II		YADKIN COUNTY
REVISIONS	INT.	DATE
N.C. DEPARTMENT OF TRANSPORTATION DIVISION OF HIGHWAYS DIVISION ELEVEN		



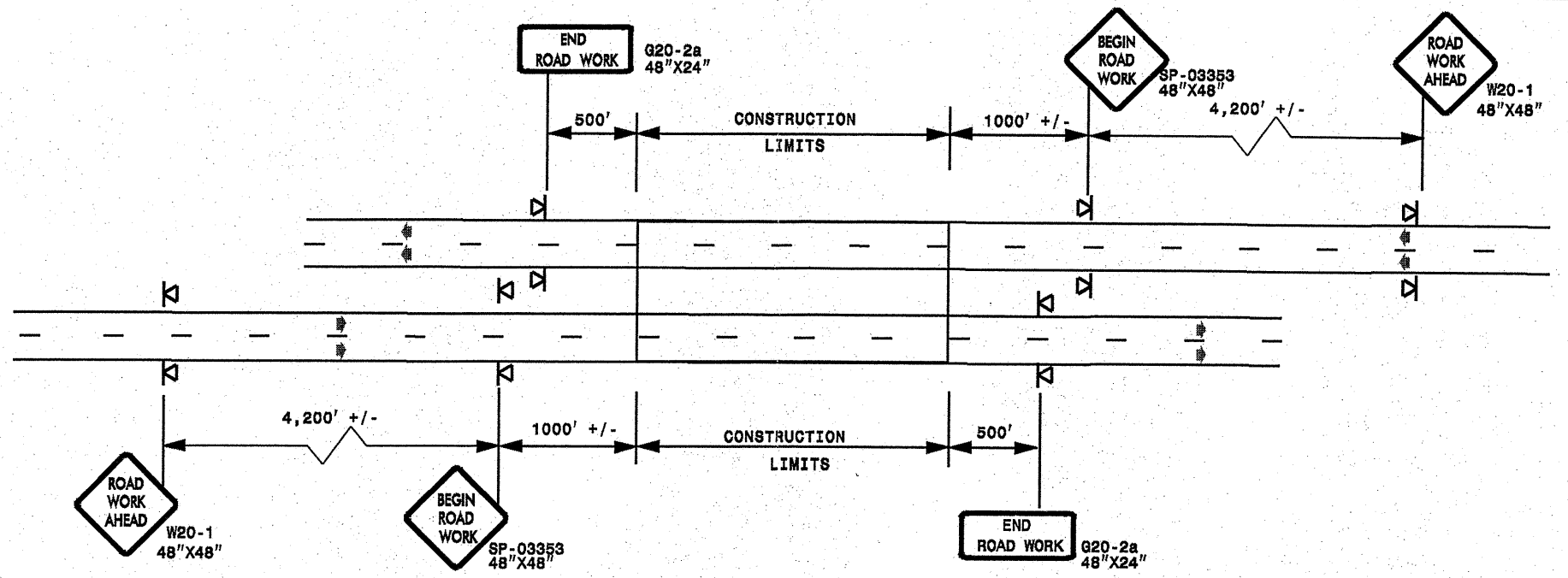
SCALE: N/A DATE: 7/2009  
 PREPARED BY: J. L. LAWS  
 REVIEWED BY:

6/2/99  
 03-AUG-2009 10:20  
 C:\my documents\manager\economic stimulus projects\1-77\yadkin-irede\11\1-5129.dde.typ-072809.dgn



**ADVANCE WORK ZONE WARNING SIGNING FOR FREEWAYS (4 LANES OR GREATER)**

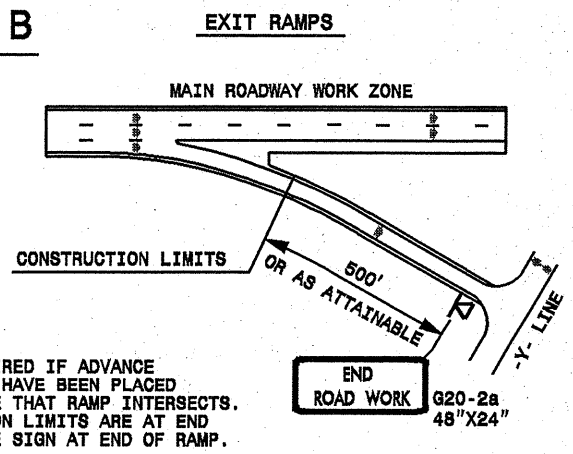
**DETAIL A**



STATE OF NORTH CAROLINA  
DEPT. OF TRANSPORTATION  
DIVISION OF HIGHWAYS  
RALEIGH, N.C.

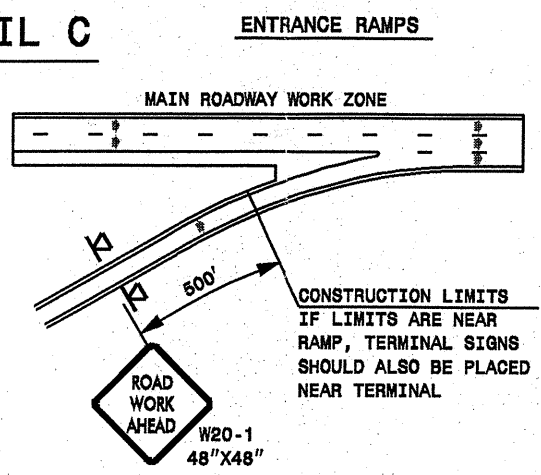
**ROADWAYS INTERSECTING ALONG FREEWAY WORK ZONE (Y-LINES)**

**DETAIL B**



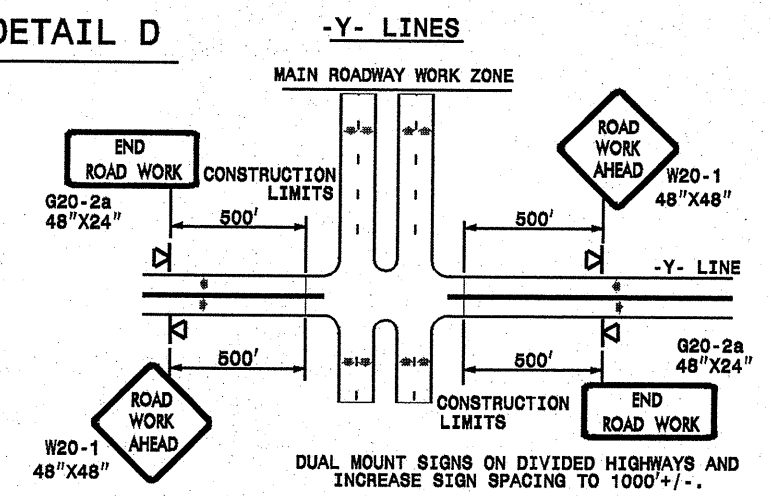
NOTE:  
SIGN NOT REQUIRED IF ADVANCE WARNING SIGNS HAVE BEEN PLACED ALONG -Y- LINE THAT RAMP INTERSECTS. IF CONSTRUCTION LIMITS ARE AT END OF RAMP, PLACE SIGN AT END OF RAMP.

**DETAIL C**



CONSTRUCTION LIMITS IF LIMITS ARE NEAR RAMP, TERMINAL SIGNS SHOULD ALSO BE PLACED NEAR TERMINAL.

**DETAIL D**



DUAL MOUNT SIGNS ON DIVIDED HIGHWAYS AND INCREASE SIGN SPACING TO 1000' +/-.

**DETAIL DRAWING  
FOR FREEWAYS  
WORK ZONE WARNING SIGNS  
(SHORT-DURATION LANE CLOSURES)**

**GENERAL NOTES**

- USE FLUORESCENT ORANGE SHEETING (TYPE VII OR HIGHER) ON ALL ADVANCE WORK ZONE SIGNS.
- DO NOT INSTALL ADVANCE WARNING SIGNS MORE THAN 3 DAYS PRIOR TO BEGINNING OF WORK.
- ALL SIGN SPACING DIMENSIONS ARE APPROXIMATE, FIELD ADJUST AS NECESSARY OR AS DIRECTED.
- USE PORTABLE WORK ZONE SIGNS ONLY WITH PORTABLE WORK ZONE SIGN STANDS SPECIFICALLY DESIGNED FOR ONE ANOTHER. PORTABLE WORK ZONE SIGNS MAY BE ROLL UP OR APPROVED COMPOSITE.
- PROVIDE PORTABLE WORK ZONE SIGN STANDS, PORTABLE SIGNS AND SIGN SHEETING WHICH ARE LISTED ON THE NORTH CAROLINA DEPARTMENT OF TRANSPORTATION'S APPROVED PRODUCT LIST OR ACCEPTED AS TRAFFIC QUALIFIED BY THE TRAFFIC CONTROL UNIT.
- \*\* TWO-WAY UNDIVIDED ADVANCE WARNING SIGN CONFIGURATION MAY BE USED ON MULTI-LANE FACILITIES WHERE CONDITIONS LIMIT THE USE OF DUAL MOUNTED SIGNS AS DETERMINED BY THE ENGINEER.

**LEGEND**

◁ PORTABLE SIGN

➡ DIRECTION OF TRAFFIC FLOW

SHEET 1 OF 1

APPROVED: _____	DATE: _____	<b>DETAIL DRAWING FOR FREEWAYS WORK ZONE WARNING SIGNS</b>	
SEAL	SCALE: NONE		REVISIONS
	DATE: _____		7-98 10/01
	DWG. BY: _____		10-98 03/04
	DESIGN BY: _____		01/01 11/04
REVIEWED BY: _____	_____	_____	_____

14-AUG-2009 16:02 s:\signing\resurfacing\030509\resurfacing\div\1\c202394\_450983.st1\_5129.yack.in.1-77\c202394\_450983.st1\_5129.free.lanesgreat.july2006.porttable.dgn