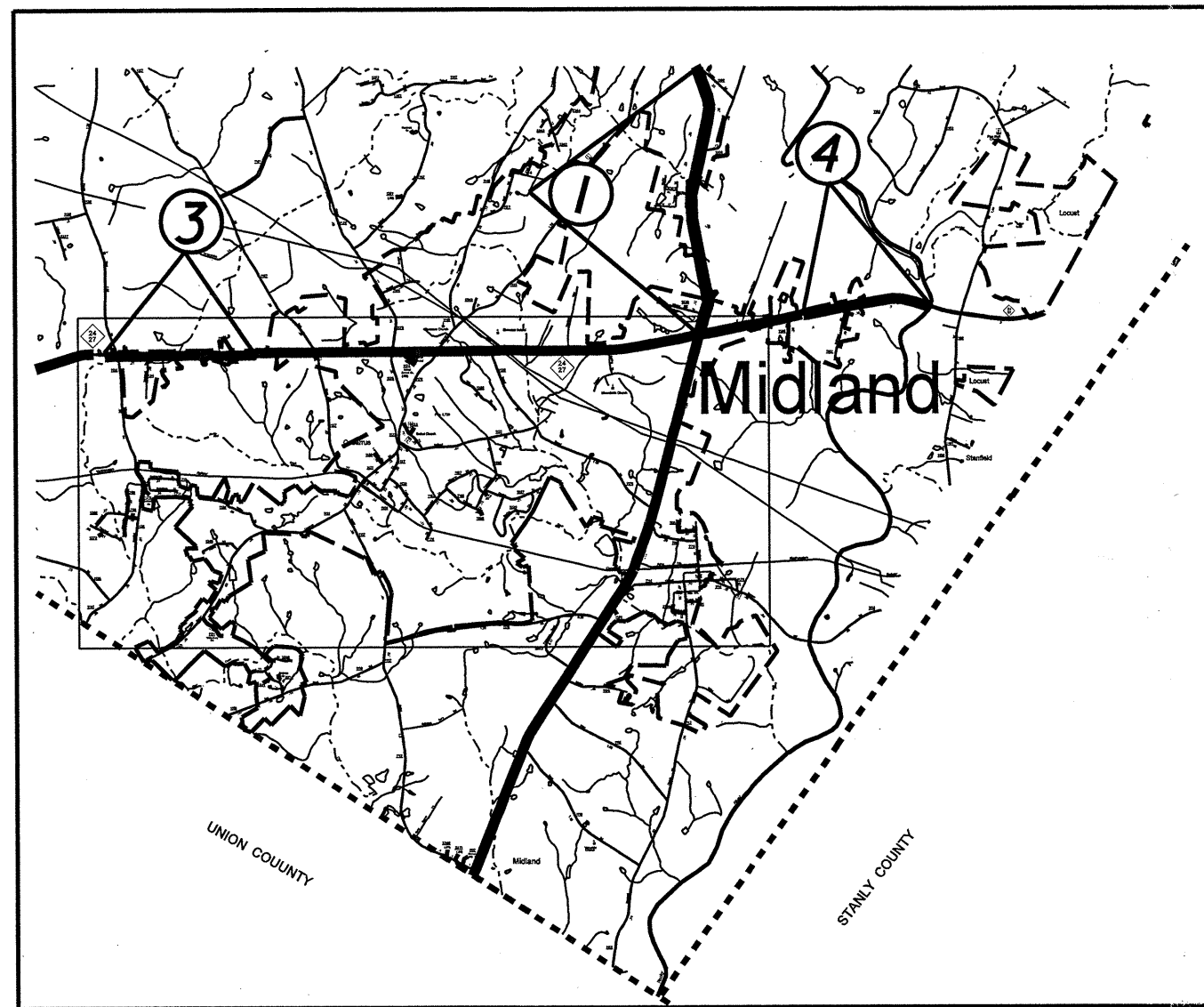


STATE	PROJECT NO.	SHEET NO.	TOTAL SHEETS
N.C.	10CR-10131.12 ETC.	1	
F.A. PROJECT NO.			



ENLARGED MUNICIPAL AND SUBURBAN AREAS

CABARRUS COUNTY

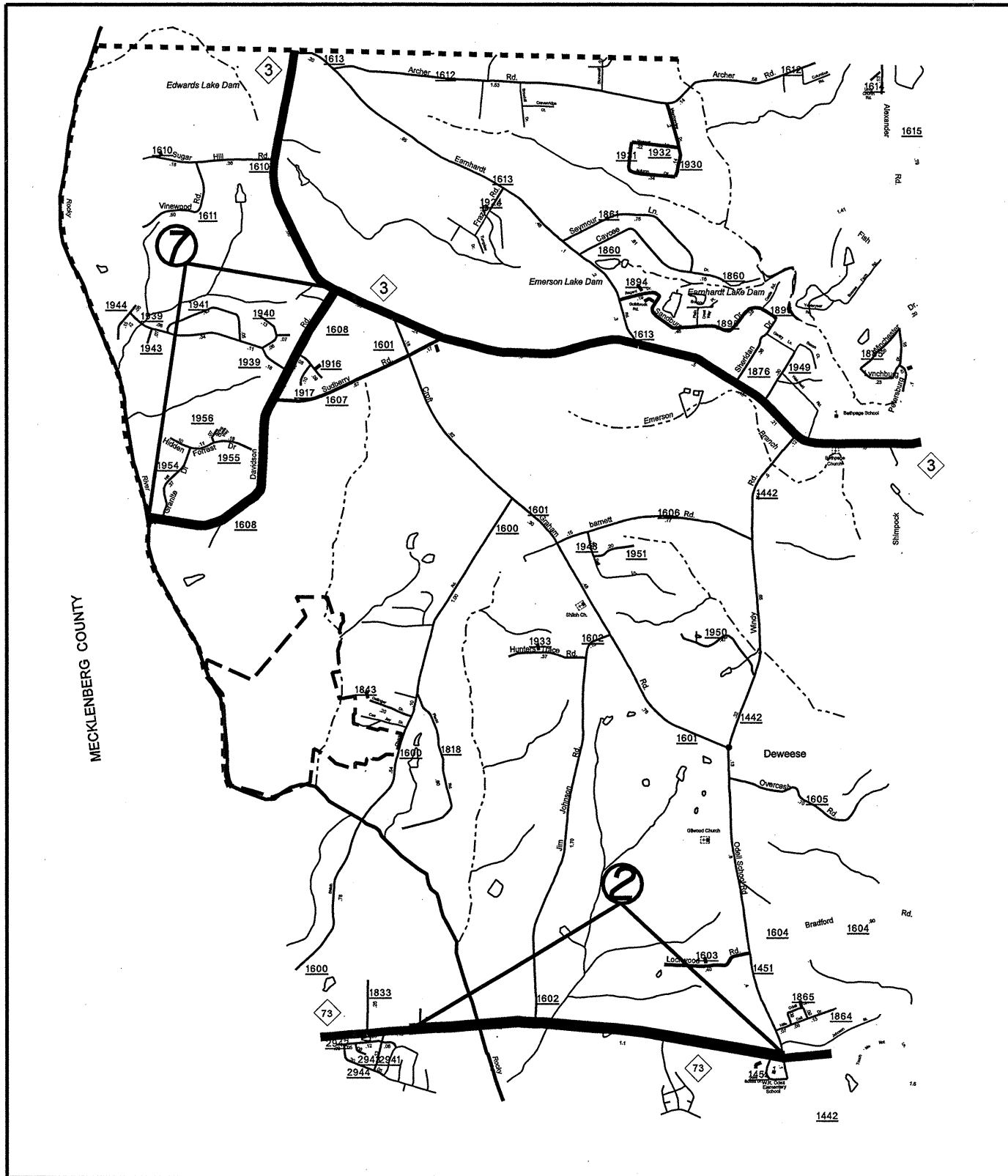
NORTH CAROLINA

PREPARED BY THE
NORTH CAROLINA DEPARTMENT OF TRANSPORTATION
DIVISION OF HIGHWAYS - GIS UNIT

IN COOPERATION WITH THE
U.S. DEPARTMENT OF TRANSPORTATION
FEDERAL HIGHWAY ADMINISTRATION

MAP #	ROUTE	DESCRIPTION
1	US 601	FROM 24/27 TO SR 1106 (CARRIKER RD)
2	NC 73	FROM SR 1451 (ODELL SCHOOL RD) TO PVT JOINT EAST OF C&G SECTION @ CABARRUS CROSSING
3	NC 24/27	FROM PAVT. JOINT WEST SR 1132 (FLOWE ST. RD) TO END DIVIDED SECTION
4	NC 24/27	FROM BRIDGE APPROACH EAST OF ROCKY RIVER TO START OF CURB & GUTTER SECTION
5	SR 2000 (JACKSON PARK RD)	FROM US 29 TO NORTH MAIN ST.
6	SR 2180 (LANE ST)	FROM I-85 TO SR 1002 (OLD SALIS/CONCORD RD)
7	SR 1608 (DAVIDSON RD)	FROM NC 3 TO MECKLENBERG COUNTY LINE
8	SR 2622 (BARRIER ST RD RD)	FROM SR 1006 (MOUNT PLEASANT RD TO SR 2617 (HAHN SCOTT RD)
9	SR 2180 (LANE ST)	FROM I-85 TO US 29

STATE	PROJECT NO.	SHEET NO.	TOTAL SHEETS
N.C.	10CR.10131.12 ETC.	2	
F.A. PROJECT NO.			



ENLARGED MUNICIPAL AND SUBURBAN AREAS

CABARRUS COUNTY

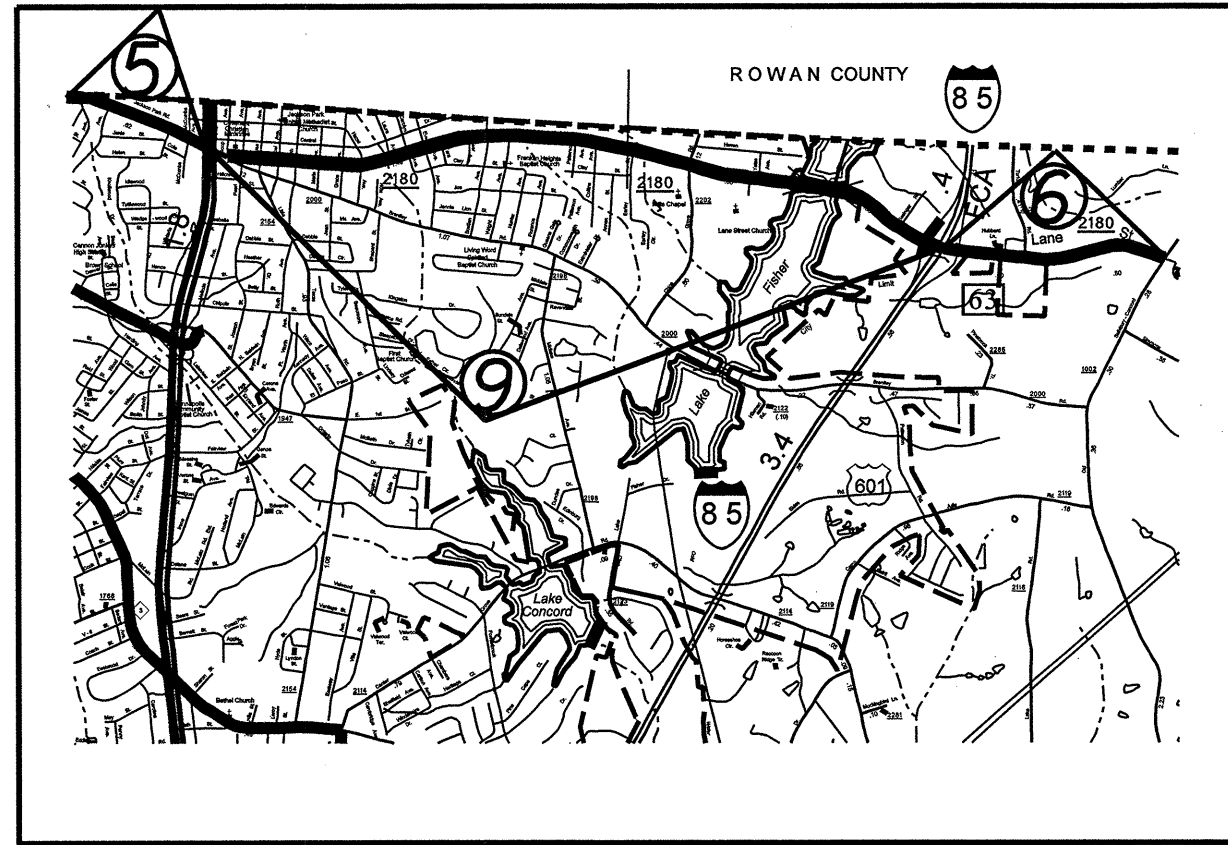
NORTH CAROLINA

PREPARED BY THE
NORTH CAROLINA DEPARTMENT OF TRANSPORTATION
DIVISION OF HIGHWAYS - GIS UNIT

IN COOPERATION WITH THE
U.S. DEPARTMENT OF TRANSPORTATION
FEDERAL HIGHWAY ADMINISTRATION

MAP #	ROUTE	DESCRIPTION
1	US 601	FROM 24/27 TO SR 1106 (CARRIKER RD)
2	NC 73	FROM SR 1451 (ODELL SCHOOL RD) TO PVT JOINT EAST OF C&G SECTION @ CABARRUS CROSSING
3	NC 24/27	FROM PAVT. JOINT WEST SR 1132 (FLOWE ST. RD) TO END DIVIDED SECTION
4	NC 24/27	FROM BRIDGE APPROACH EAST OF ROCKY RIVER TO START OF CURB & GUTTER SECTION
5	SR 2000 (JACKSON PARK RD)	FROM US 29 TO NORTH MAIN ST.
6	SR 2180 (LANE ST)	FROM I-85 TO SR 1002 (OLD SALIS/CONCORD RD)
7	SR 1608 (DAVIDSON RD)	FROM NC 3 TO MECKLENBERG COUNTY LINE
8	SR 2622 (BARRIER ST RD RD)	FROM SR 1006 (MOUNT PLEASANT RD TO SR 2617 (HAHN SCOTT RD)
9	SR 2180 (LANE ST)	FROM I-85 TO US 29

STATE	PROJECT NO.	SHEET NO.	TOTAL SHEETS
N.C.	10CR.1013.12 ETC.	3	
F.A. PROJECT NO.			



ENLARGED MUNICIPAL AND SUBURBAN AREAS
CABARRUS COUNTY
 NORTH CAROLINA
 PREPARED BY THE
 NORTH CAROLINA DEPARTMENT OF TRANSPORTATION
 DIVISION OF HIGHWAYS - GIS UNIT
 IN COOPERATION WITH THE
 U.S. DEPARTMENT OF TRANSPORTATION
 FEDERAL HIGHWAY ADMINISTRATION

MAP #	ROUTE	DESCRIPTION
1	US 601	FROM 24/27 TO SR 1106 (CARRIKER RD)
2	NC 73	FROM SR 1451 (ODELL SCHOOL RD) TO PVT JOINT EAST OF C&G SECTION @ CABARRUS CROSSING
3	NC 24/27	FROM PAVT. JOINT WEST SR 1132 (FLOWE ST. RD) TO END DIVIDED SECTION
4	NC 24/27	FROM BRIDGE APPROACH EAST OF ROCKY RIVER TO START OF CURB & GUTTER SECTION
5	SR 2000 (JACKSON PARK RD)	FROM US 29 TO NORTH MAIN ST.
6	SR 2180 (LANE ST)	FROM I-85 TO SR 1002 (OLD SALIS/CONCORD RD)
7	SR 1608 (DAVIDSON RD)	FROM NC 3 TO MECKLENBERG COUNTY LINE
8	SR 2622 (BARRIER ST RD RD)	FROM SR 1006 (MOUNT PLEASANT RD TO SR 2617 (HAHN SCOTT RD)
9	SR 2180 (LANE ST)	FROM I-85 TO US 29

STATE	PROJECT NO.	SHEET NO.	TOTAL SHEETS
N.C.	10CR.10131.12 ETC.	4	
F.A. PROJECT NO.			



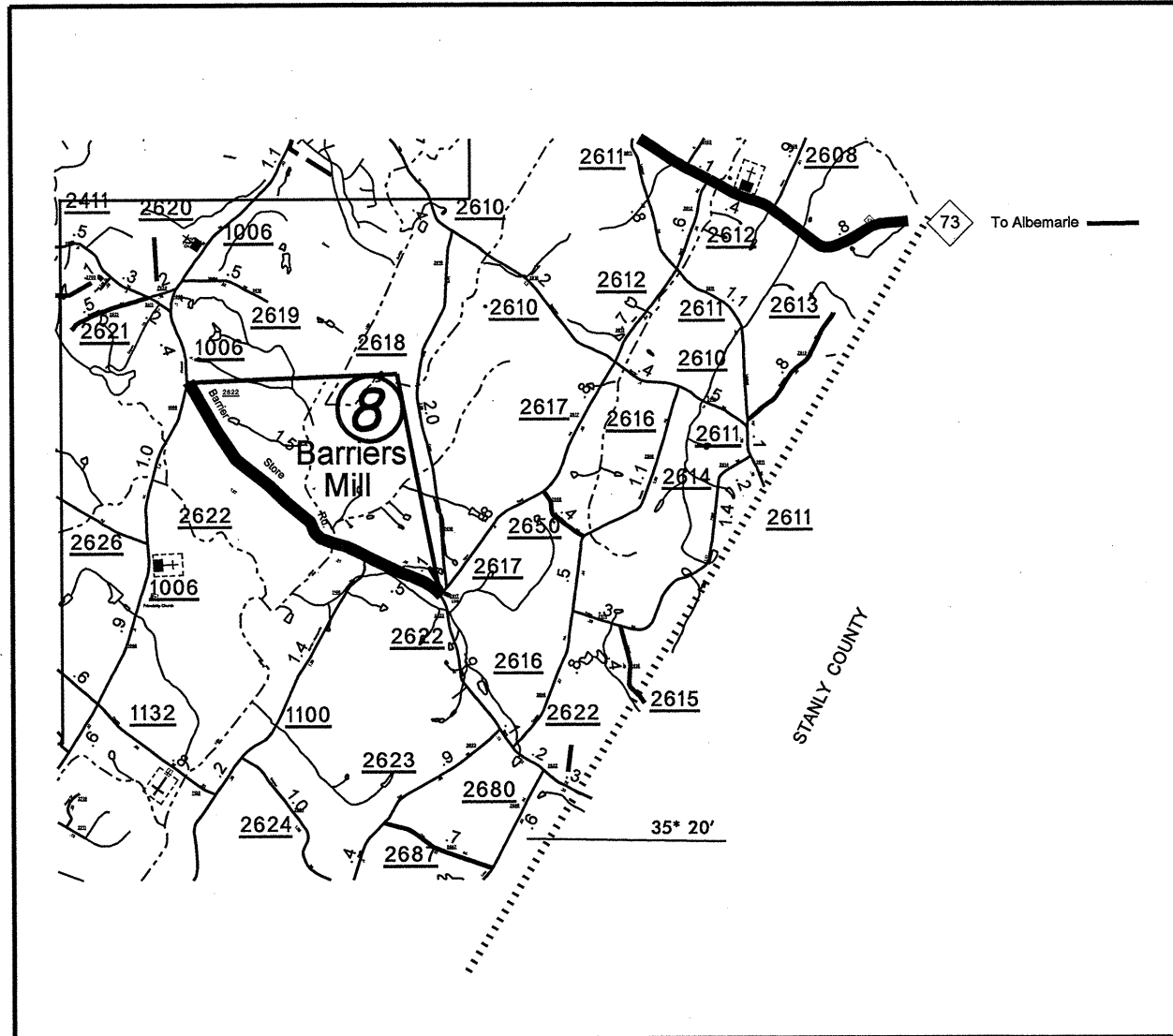
ENLARGED MUNICIPAL AND SUBURBAN AREAS

CABARRUS COUNTY

NORTH CAROLINA

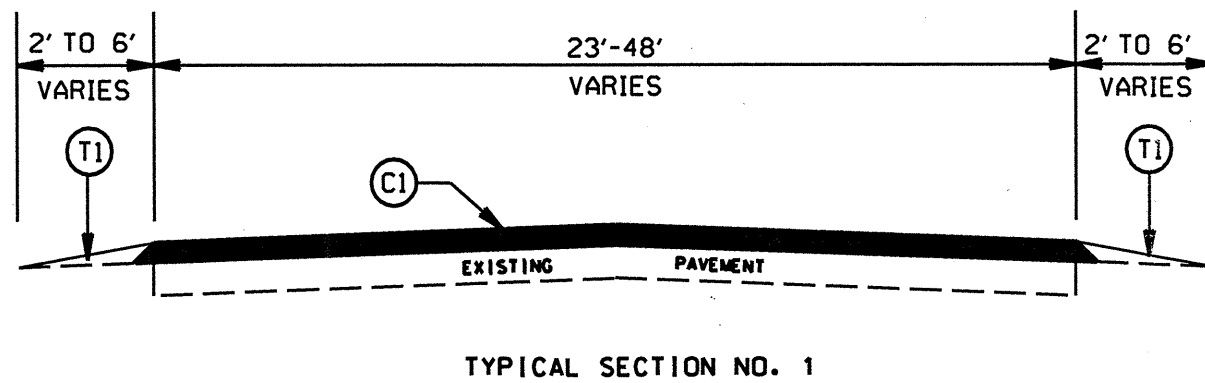
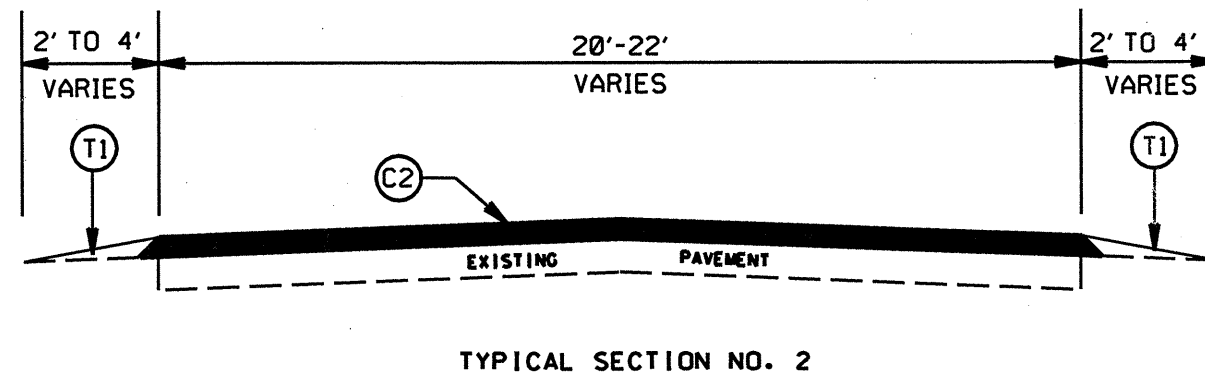
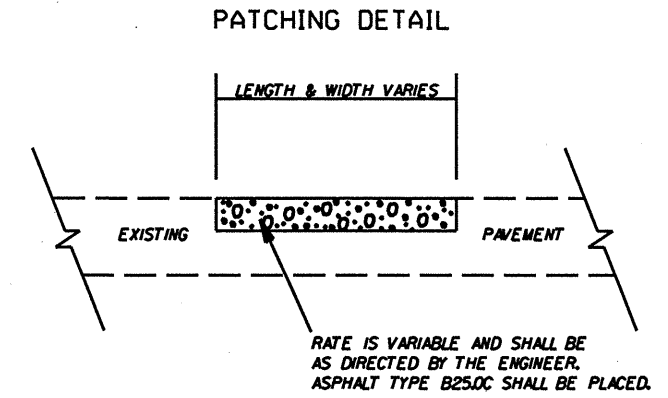
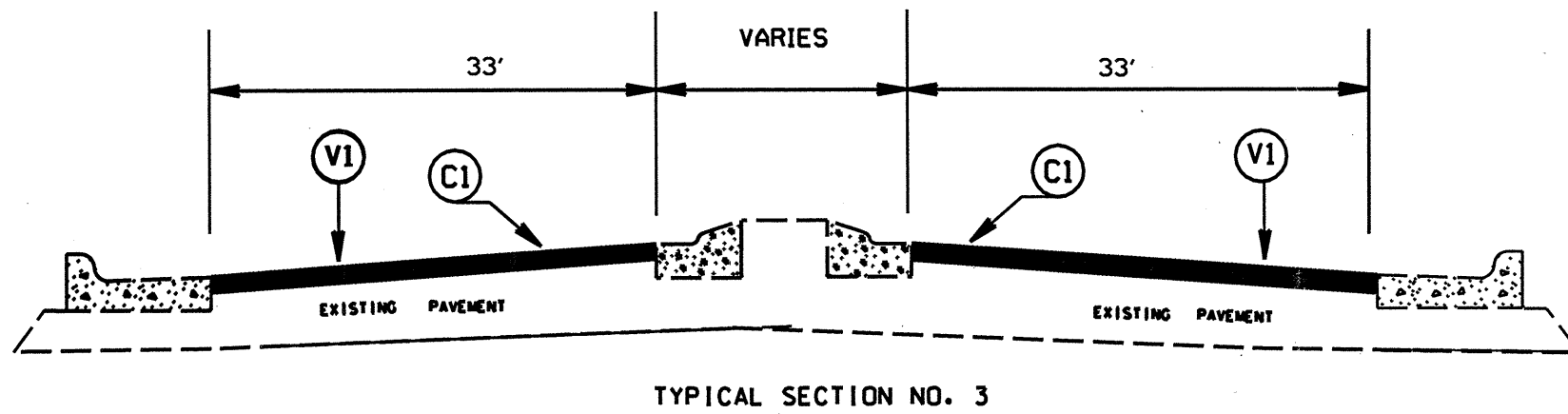
PREPARED BY THE
NORTH CAROLINA DEPARTMENT OF TRANSPORTATION
DIVISION OF HIGHWAYS - GIS UNIT

IN COOPERATION WITH THE
U.S. DEPARTMENT OF TRANSPORTATION
FEDERAL HIGHWAY ADMINISTRATION



MAP #	ROUTE	DESCRIPTION
1	US 601	FROM 24/27 TO SR 1106 (CARRIKER RD)
2	NC 73	FROM SR 1451 (ODELL SCHOOL RD) TO PVT JOINT EAST OF C&G SECTION @ CABARRUS CROSSING
3	NC 24/27	FROM PAVT. JOINT WEST SR 1132 (FLOWE ST. RD) TO END DIVIDED SECTION
4	NC 24/27	FROM BRIDGE APPROACH EAST OF ROCKY RIVER TO START OF CURB & GUTTER SECTION
5	SR 2000 (JACKSON PARK RD)	FROM US 29 TO NORTH MAIN ST.
6	SR 2180 (LANE ST)	FROM I-85 TO SR 1002 (OLD SALIS/CONCORD RD)
7	SR 1608 (DAVIDSON RD)	FROM NC 3 TO MECKLENBERG COUNTY LINE
8	SR 2622 (BARRIER ST RD RD)	FROM SR 1006 (MOUNT PLEASANT RD TO SR 2617 (HAHN SCOTT RD)
9	SR 2180 (LANE ST)	FROM I-85 TO US 29

STATE	PROJECT NO.	SHEET NO.	TOTAL SHEETS
N.C.	10CR.1013L12 ETC.	5	
F.A. PROJECT NO.			

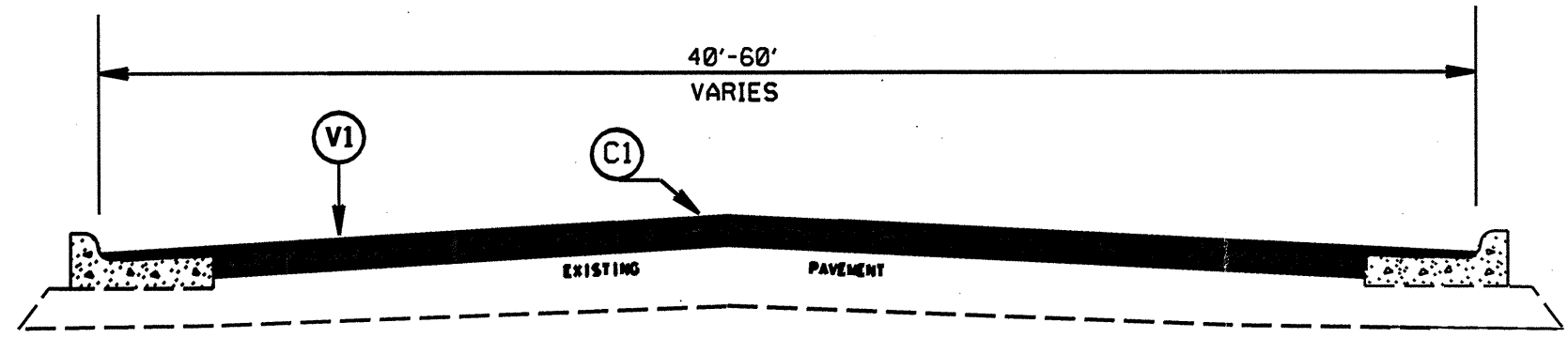


PAVEMENT SCHEDULE	
C1	PROP. APPROX. 1.5" ASPHALT CONCRETE SURFACE COURSE, TYPE S9.5C, AT AN AVERAGE RATE OF 168 LBS. PER SQ. YD.
C2	PROP. APPROX. 1.5" ASPHALT CONCRETE SURFACE COURSE, TYPE S9.5B, AT AN AVERAGE RATE OF 168 LBS. PER SQ. YD.
D1	PROP. APPROX. 2.5" ASPHALT CONCRETE INTERMEDIATE COURSE, TYPE I19.0C, AT AN AVERAGE RATE OF 285 LBS. PER SQ. YD.
T1	SHOULDER RECONSTRUCTION
V1	MILLING BITUMINOUS PAVEMENT. 1.5" DEPTH.
V2	MILLING BITUMINOUS PAVEMENT. 3.0" DEPTH.

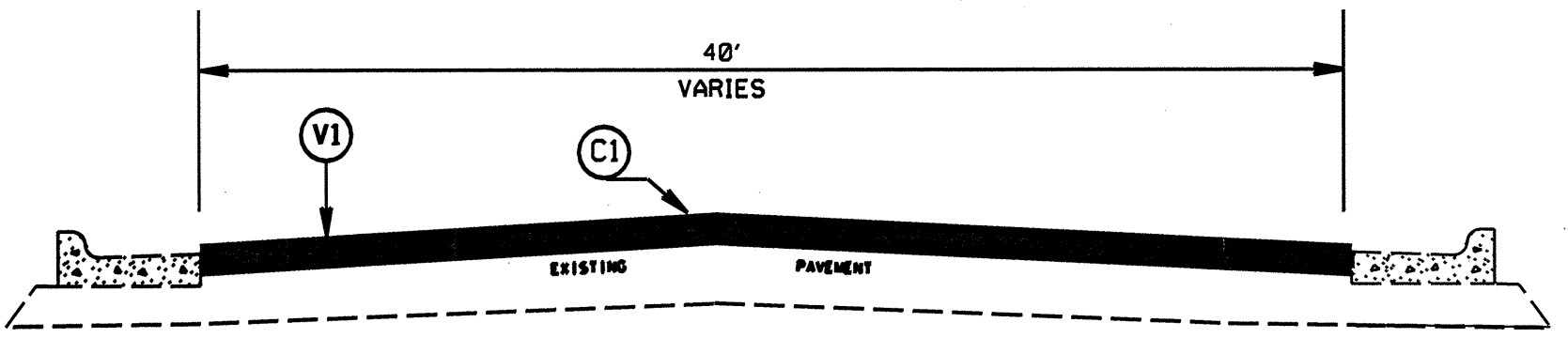
**CABARRUS COUNTY
RESURFACING 2009**

SCALE	-NA-		REVISIONS
DATE	7/09		
DWG. BY	JDA		
DESIGN BY	JDA		
APPROVED	MPM		

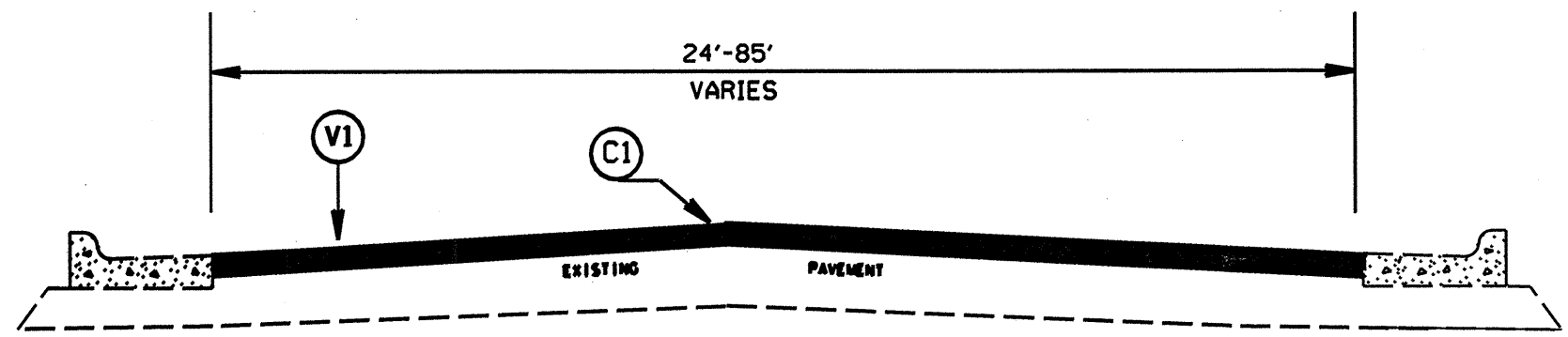
STATE	PROJECT NO.	SHEET NO.	TOTAL SHEETS
N.C.	10CR.10131.12 ETC.	6	
F.A. PROJECT NO.			



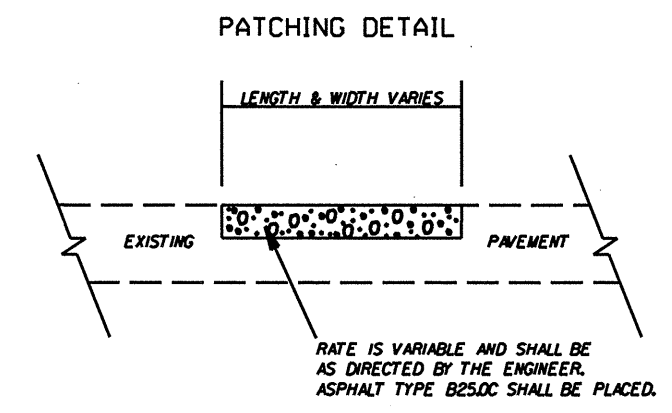
TYPICAL SECTION NO. 6



TYPICAL SECTION NO. 5



TYPICAL SECTION NO. 4

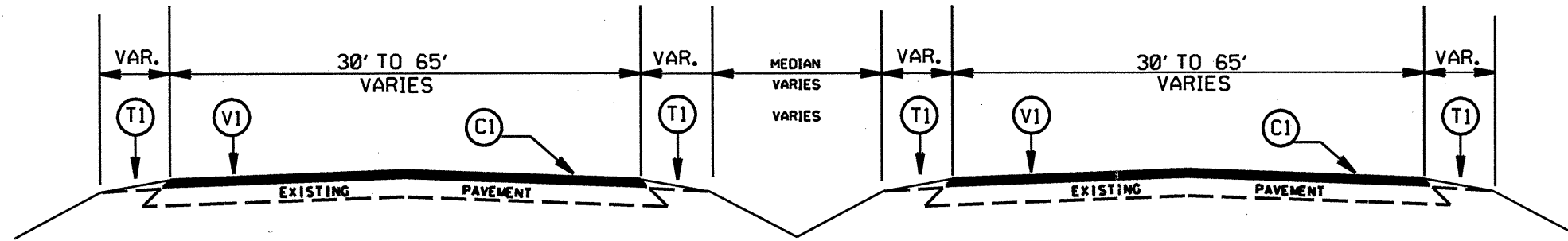


PAVEMENT SCHEDULE	
C1	PROP. APPROX. 1.5" ASPHALT CONCRETE SURFACE COURSE, TYPE S9.5C, AT AN AVERAGE RATE OF 168 LBS. PER SQ. YD.
C2	PROP. APPROX. 1.5" ASPHALT CONCRETE SURFACE COURSE, TYPE S9.5B, AT AN AVERAGE RATE OF 168 LBS. PER SQ. YD.
D1	PROP. APPROX. 2.5" ASPHALT CONCRETE INTERMEDIATE COURSE, TYPE I19.0C, AT AN AVERAGE RATE OF 285 LBS. PER SQ. YD.
T1	SHOULDER RECONSTRUCTION
V1	MILLING BITUMINOUS PAVEMENT. 1.5" DEPTH.
V2	MILLING BITUMINOUS PAVEMENT. 3.0" DEPTH.

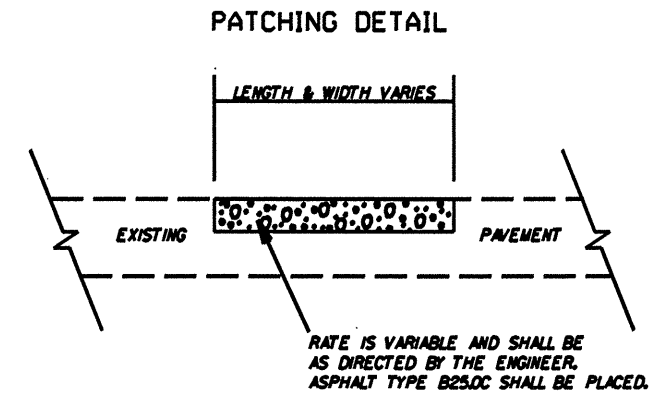
CABARRUS COUNTY
RESURFACING 2009

SCALE	-NA-		REVISIONS
DATE	7/09		
DESIGNED BY	JDA		
DESIGN BY	JDA		
APPROVED	MPH		

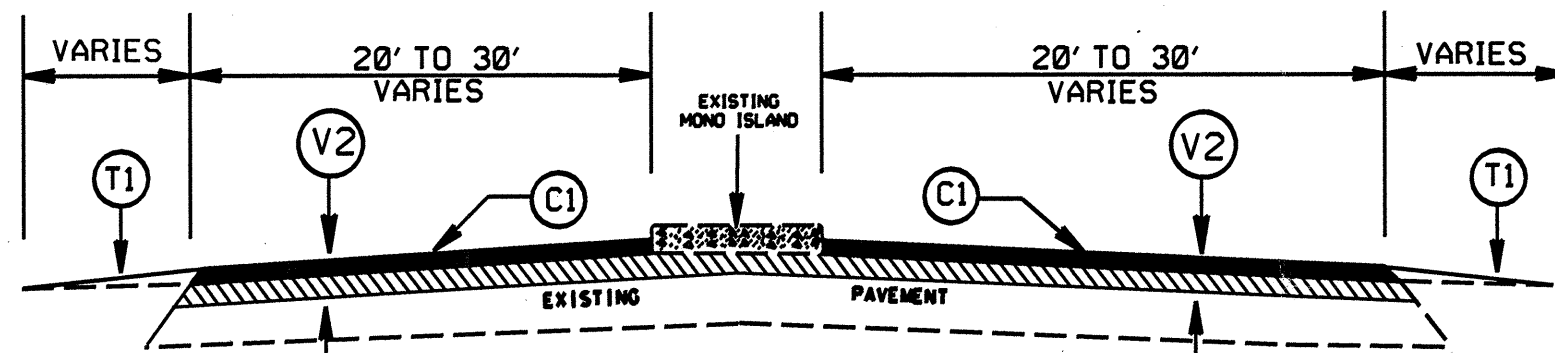
STATE	PROJECT NO.	SHEET NO.	TOTAL SHEETS
N.C.	10CR.10131J2 ETC.	7	
F.A. PROJECT NO.			



TYPICAL SECTION NO. 9

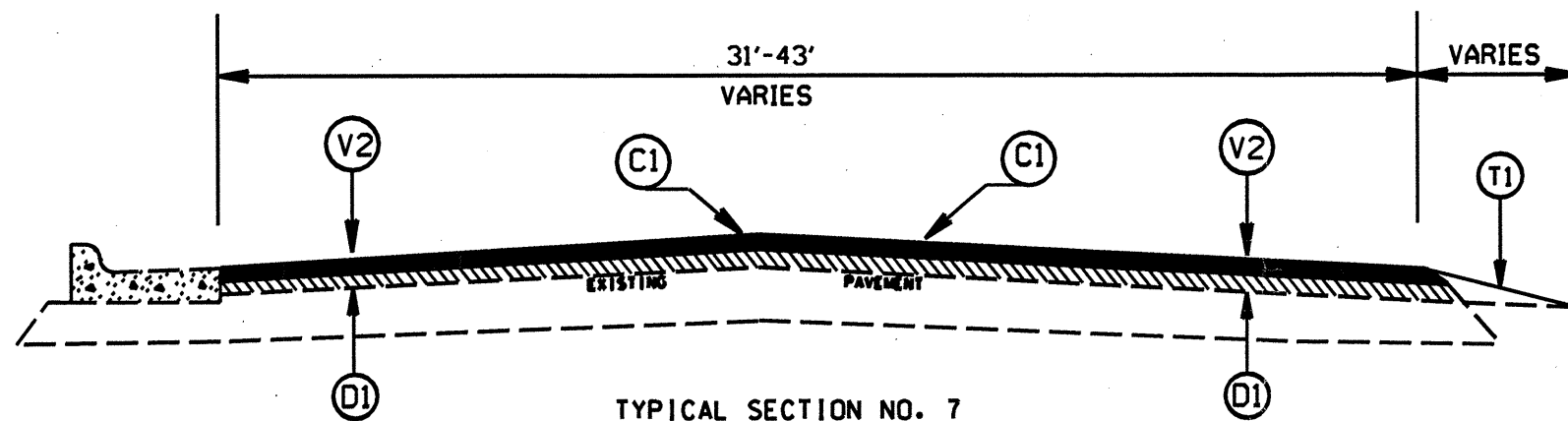


RATE IS VARIABLE AND SHALL BE AS DIRECTED BY THE ENGINEER. ASPHALT TYPE B25.0C SHALL BE PLACED.



TYPICAL SECTION NO. 8

NOTE: 3.0" MILLING FROM BRIDGE APPROACH EAST OF I-85 TO BEYOND TRUCK STOP ENTRANCE OR AS DIRECTED BY THE ENGINEER.



TYPICAL SECTION NO. 7

NOTE: 3.0" MILLING AT LOCATIONS AS DIRECTED BY THE ENGINEER

PAVEMENT SCHEDULE	
C1	PROP. APPROX. 1.5" ASPHALT CONCRETE SURFACE COURSE, TYPE S9.5C, AT AN AVERAGE RATE OF 168 LBS. PER SQ. YD.
C2	PROP. APPROX. 1.5" ASPHALT CONCRETE SURFACE COURSE, TYPE S9.5B, AT AN AVERAGE RATE OF 168 LBS. PER SQ. YD.
D1	PROP. APPROX. 2.5" ASPHALT CONCRETE INTERMEDIATE COURSE, TYPE I19.0C, AT AN AVERAGE RATE OF 285 LBS. PER SQ. YD.
T1	SHOULDER RECONSTRUCTION
V1	MILLING BITUMINOUS PAVEMENT. 1.5" DEPTH.
V2	MILLING BITUMINOUS PAVEMENT. 3.0" DEPTH.

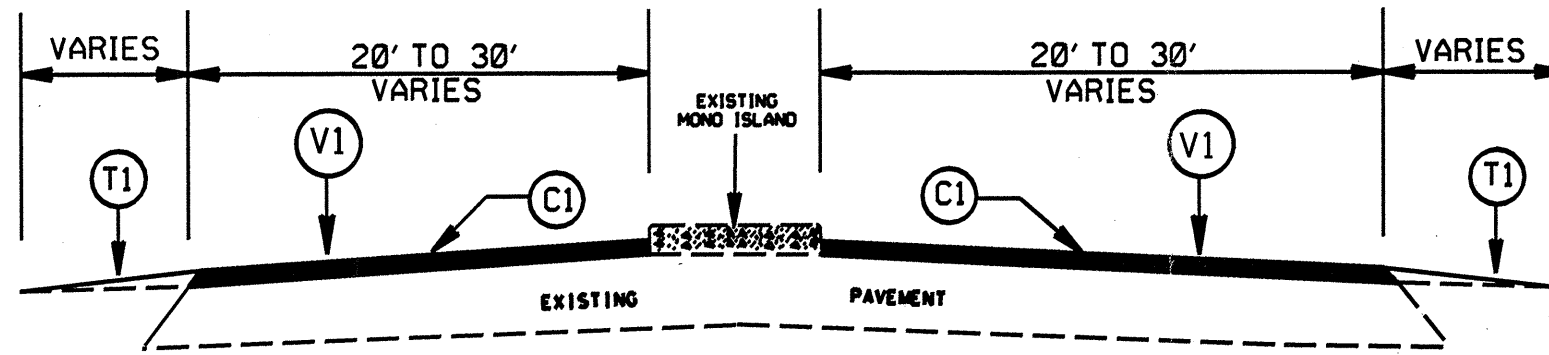
CABARRUS COUNTY
RESURFACING 2009

SCALE	-NA-
DATE	7/09
DWG. BY	JDA
DESIGN BY	JDA
APPROVED	MPW

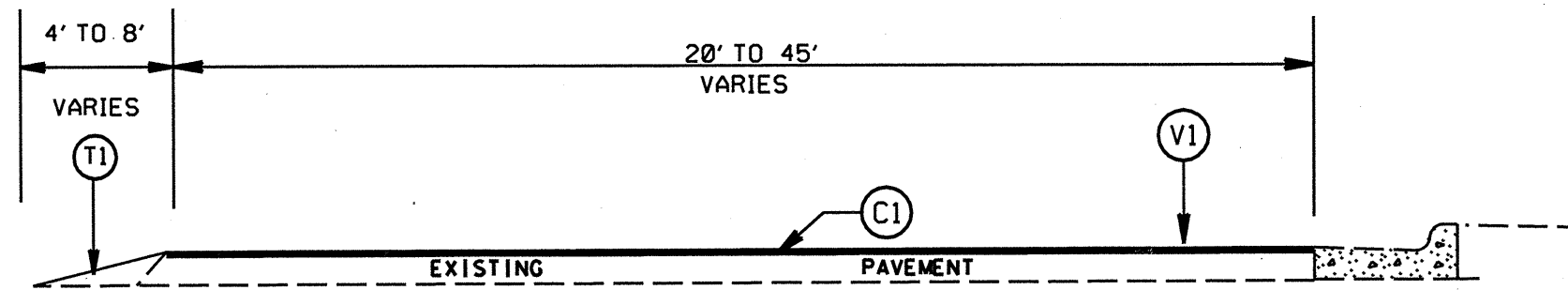


REVISIONS

STATE	PROJECT NO.	SHEET NO.	TOTAL SHEETS
N.C.	10CR.10131.12 etc.	8	
F.A. PROJECT NO.			

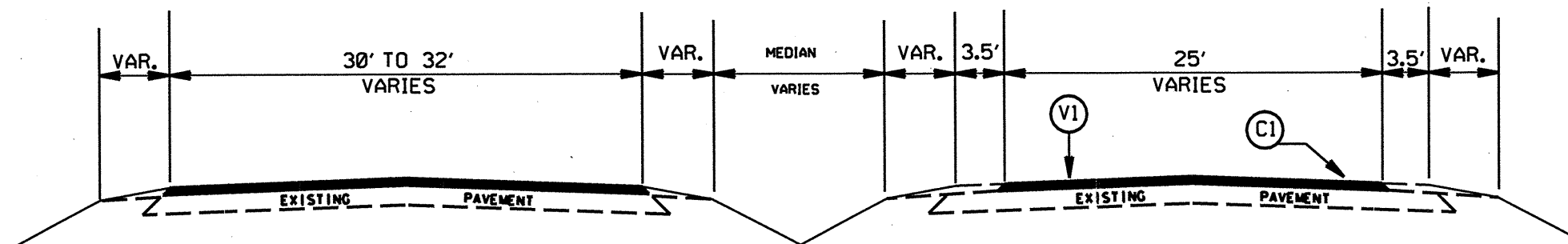


TYPICAL SECTION NO. 12



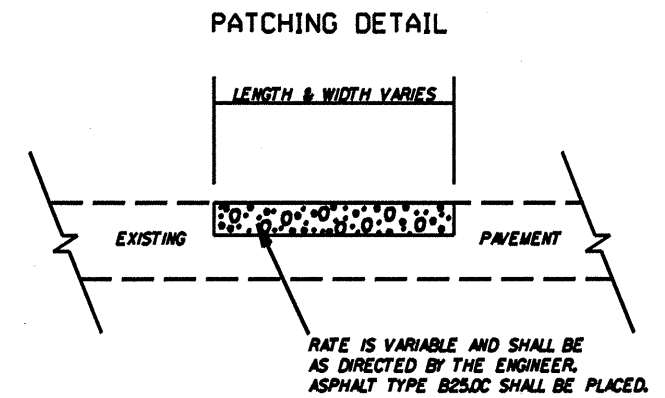
TYPICAL SECTION NO. 11

NOTE: RAMPS ON THE WEST SIDE OF I-85 WILL REQUIRE 1.5" MILLING FROM THE INTERSECTION OF LANE STREET TO BEYOND EXISTING CURB & GUTTER DOWN RAMPS



TYPICAL SECTION NO. 10

NOTE: EASTBOUND TRAVEL LANES TO BE MILLED AND FILLED ONLY ON THIS RESURFACING MAP



PAVEMENT SCHEDULE	
C1	PROP. APPROX. 1.5" ASPHALT CONCRETE SURFACE COURSE, TYPE S9.5C, AT AN AVERAGE RATE OF 168 LBS. PER SQ. YD.
C2	PROP. APPROX. 1.5" ASPHALT CONCRETE SURFACE COURSE, TYPE S9.5B, AT AN AVERAGE RATE OF 168 LBS. PER SQ. YD.
D1	PROP. APPROX. 2.5" ASPHALT CONCRETE INTERMEDIATE COURSE, TYPE I19.0C, AT AN AVERAGE RATE OF 285 LBS. PER SQ. YD.
T1	SHOULDER RECONSTRUCTION
V1	MILLING BITUMINOUS PAVEMENT. 1.5" DEPTH.
V2	MILLING BITUMINOUS PAVEMENT. 3.0" DEPTH.

CABARRUS COUNTY
RESURFACING 2009

SCALE	-NA-		REVISIONS
DATE	7/09		
DWG. BY	JDA		
DESIGN BY	JDA		
APPROVED	MPW		

REV. 01-02-07
2006 ROADWAY ENGLISH STANDARD DRAWINGS

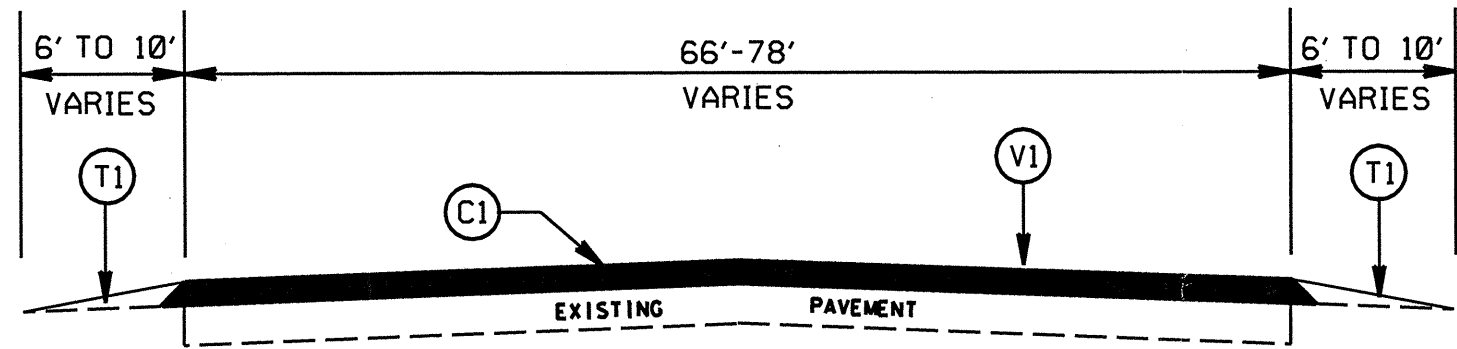
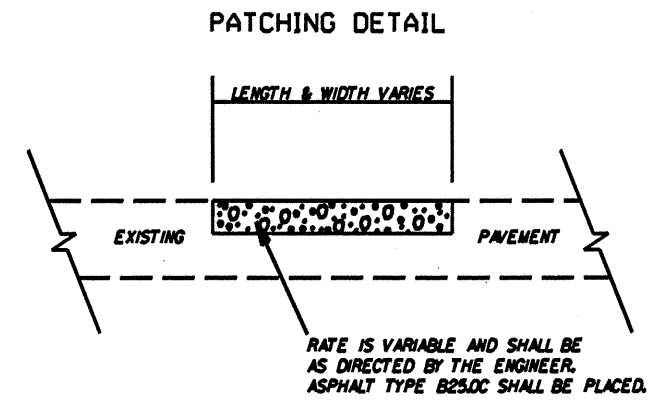
The following Roadway Standards as appear in "Roadway Standard Drawings" Highway Design Branch - N. C. Department of Transportation - Raleigh, N. C., Dated July 18, 2006 are applicable to this project and by reference hereby are considered a part of these plans:

STD.NO.	TITLE
DIVISION 8 - INCIDENTALS	
848.05	wheelchair Ramp - Curb Cut
848.06	wheelchair Ramp - Retrofitting of Existing Curb

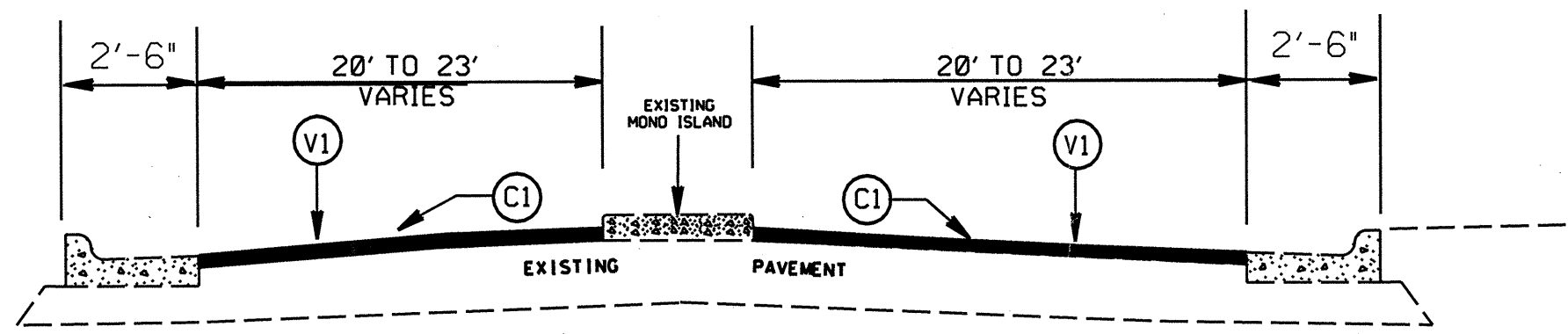
GENERAL NOTES: 2006 SPECIFICATIONS
EFFECTIVE: 07-18-06
REVISED: 07-30-08

WHEELCHAIR RAMPS:
WHEELCHAIR RAMPS ARE SHOWN ON THE PLANS AT APPROXIMATE LOCATIONS. THE CONSTRUCTION OF ALL WHEELCHAIR RAMPS SHALL BE IN ACCORDANCE WITH STD. NO. 848.05

STATE	PROJECT NO.	SHEET NO.	TOTAL SHEETS
N.C.	10CR.10131.12 ETC.	9	
F.A. PROJECT NO.			



TYPICAL SECTION NO. 14



TYPICAL SECTION NO. 13

PAVEMENT SCHEDULE	
C1	PROP. APPROX. 1.5" ASPHALT CONCRETE SURFACE COURSE, TYPE S9.5C, AT AN AVERAGE RATE OF 168 LBS. PER SQ. YD.
C2	PROP. APPROX. 1.5" ASPHALT CONCRETE SURFACE COURSE, TYPE S9.5B, AT AN AVERAGE RATE OF 168 LBS. PER SQ. YD.
D1	PROP. APPROX. 2.5" ASPHALT CONCRETE INTERMEDIATE COURSE, TYPE I19.0C, AT AN AVERAGE RATE OF 285 LBS. PER SQ. YD.
T1	SHOULDER RECONSTRUCTION
V1	MILLING BITUMINOUS PAVEMENT. 1.5" DEPTH.
V2	MILLING BITUMINOUS PAVEMENT. 3.0" DEPTH.

**CABARRUS COUNTY
RESURFACING 2009**

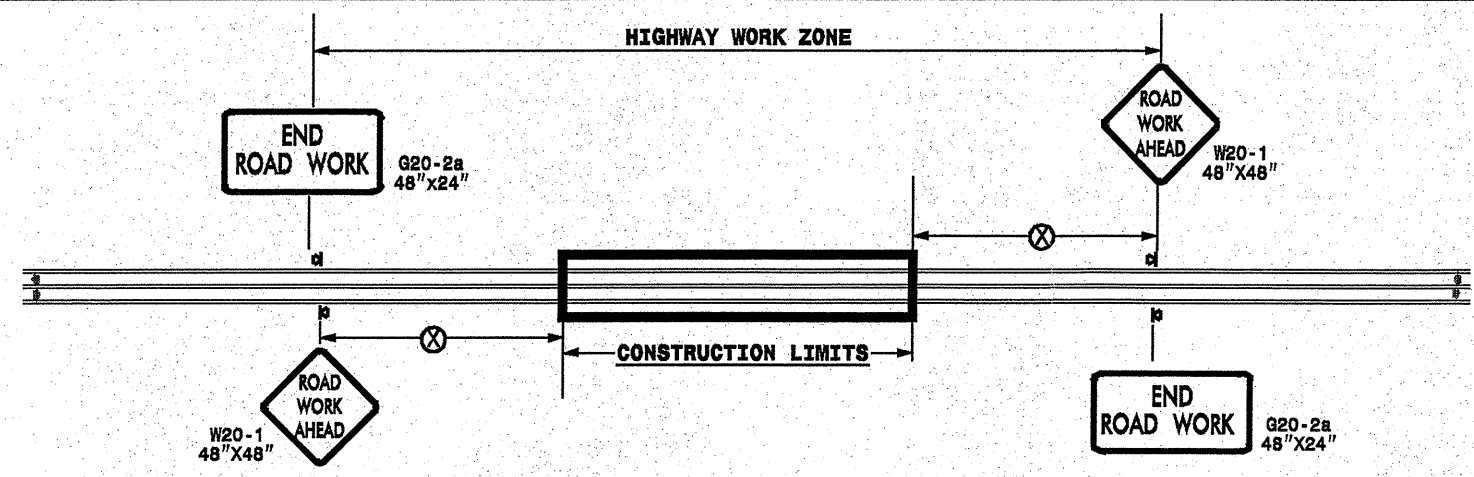
SCALE	-NA-		REVISIONS
DATE	7/09		
DES. BY	JDA		
DESIGN BY	JDA		
APPROVED	MPH		

PROJECT NO.	SHEET NO.	TOTAL NO.
10CR.10131.12, 10CR.10131.13 10CR.10131.14, ETC.	10	

SUMMARY OF QUANTITIES

PROJECT NO	COUNTY	MAP NO	ROUTE	DESCRIPTION	TYP	FINAL SURFACE TESTING REQUIRED	LENGTH MI	WIDTH FT	INCIDENTAL STONE BASE TONS	SHOULDER RECONSTRUCTION SMI	1 1/2" MILLING SY	3" MILLING SY	INCIDENTAL MILLING SY	INTERMEDIATE COURSE, I19.0C TONS	SURFACE COURSE, S9.5B TONS	LEVELING COURSE, S9.5B TONS	SURFACE COURSE, S9.5C TONS	LEVELING COURSE, S9.5C TONS	PG 64-22 PLANT MIX TONS	PG 70-22 PLANT MIX TONS	PATCHING EXISTING PAVEMENT TONS	WHEELCHAIR RAMPS EA	RETROFIT EXISTING WHEELCHAIR RAMPS EA	ADJ. OF CATCH BASIN EA	ADJ. OF MANHOLES EA	ADJ. OF METER OR VALVE BOX EA	SEED & MULCHING AC	PORTABLE LIGHTING LS					
10CR.10131.12	Cabarrus	1	US 601	FROM NC 24/27 TO SR 1106 (CARRIKER RD.)	1,4	NO	1.9	32	95	3.60	3,600						3,526	499		244	499					1	1	1	2.30				
TOTAL FOR MAP NO. 1							1.9		95	3.60	3,600						3,526	499		244	499					1	1	1	2.30				
TOTAL FOR PROJ NO. 10CR.10131.12							1.9		95	3.60	3,600							3,526	499		244	499					1	1	1	2.30			
10CR.10131.13	Cabarrus	2	NC 73	FROM SR 1451 (ODELL SCHOOL RD.) TO PVMT. JOINT EAST OF C&G SECTION @ CAB. CROSS.	1	NO	1.5	24	75	3.00			300				2,266	236		151	551						1	1	1.80				
TOTAL FOR MAP NO. 2							1.5		75	3.00			300					2,266	236		151	551						1	1	1.80			
TOTAL FOR PROJ NO. 10CR.10131.13							1.5		75	3.00			300					2,266	236		151	551						1	1	1.80			
10CR.10131.14	Cabarrus	3	NC 24/27 (EAST BOUND TRAVEL LANES ONLY)	PVMT. JOINT WEST OF SR 1132 (FLOWE STORE RD.) TO END OF DIVIDED SECTION	10	NO	1.1	25			16,940						1,430	289		105	289												
TOTAL FOR MAP NO. 3							1.1				16,940						1,430	289		105	289												
TOTAL FOR PROJ NO. 10CR.10131.14							1.1				16,940						1,430	289		105	289												
10CR.10131.15	Cabarrus	4	NC 24/27	FROM BRIDGE APPROACH EAST OF ROCKY RIVER TO C&G SECTION	9,14	NO	0.9	30-78									3,045			183	225									1.00			
TOTAL FOR MAP NO. 4							0.9				3,045						3,045			183	225											1.00	
TOTAL FOR PROJ NO. 10CR.10131.15							0.9				3,045						3,045			183	225											1.00	
10CR.20131.42	Cabarrus	5	SR 2000 (JACKSON PARK RD.)	FROM US 29 TO NORTH MAIN ST.	3,4,5,6	NO	0.68	40			24,000						2,012	50		124	250	6	9										
TOTAL FOR MAP NO. 5							0.68				24,000						2,012	50		124	250	6	9										
TOTAL FOR PROJ NO. 10CR.20131.42							0.68				24,000						2,012	50		124	250	6	9										
10CR.20131.40	Cabarrus	6	SR 2180 (LANE ST.)	FROM I-85 TO SR 1002 (OLD SALISBURY-CONCORD RD.)	1,4,7,8	NO	0.8	23	35	1.40	1,260	4,800		905			1,107	105	43	73	400					1	1	1	1.00	*			
TOTAL FOR MAP NO. 6							0.8		35	1.40	1,260	4,800		905			1,107	105	43	73	400							1	1	1	1.00	1	
TOTAL FOR PROJ NO. 10CR.20131.40							0.8		35	1.40	1,260	4,800		905			1,107	105	43	73	400							1	1	1	1.00	1	
10CR.20131.47	Cabarrus	7	SR 1608 (DAVIDSON RD.)	FROM NC 3 TO MECK. CO LINE	2	NO	1.6	20	80	3.20			150		1,771	588				144	588									1.90			
TOTAL FOR MAP NO. 7							1.6		80	3.20			150		1,771	588						144	588									1.90	
TOTAL FOR PROJ NO. 10CR.20131.47							1.6		80	3.20			150		1,771	588						144	588									1.90	
10CR.20131.48	Cabarrus	8	SR 2622 (BARRIER STORE RD.)	FROM SR 1006 (MOUNT PLEASANT RD.) TO SR 2617 (HAHN SCOTT RD.)	2	NO	1.9	22	95	3.80			120		2,175	698				176	698									2.30			
TOTAL FOR MAP NO. 8							1.9		95	3.80			120		2,175	698						176	698									2.30	
TOTAL FOR PROJ NO. 10CR.20131.48							1.9		95	3.80			120		2,175	698						176	698									2.30	
10CR.20131.49	Cabarrus	9	SR 2180 (LANE ST.) AND 150' OF ON/OFF SB RAMPS @ I-85	FROM I-85 TO US 29	4,11,12,13	NO	2.5	48	20	0.20	73,216						6,572	50		398	840								0.10	*			
TOTAL FOR MAP NO. 9							2.5		20	0.20	73,216						6,572	50		398	840										0.10	1	
TOTAL FOR PROJ NO. 10CR.20131.49							2.5		20	0.20	73,216						6,572	50		398	840										0.10	1	
GRAND TOTAL							12.88		400	18.40	151,711	4,800	570	905	3,946	1,286	19,958	1,229	363	1,278	4,340	6	9	2	3	3	10.40	1					

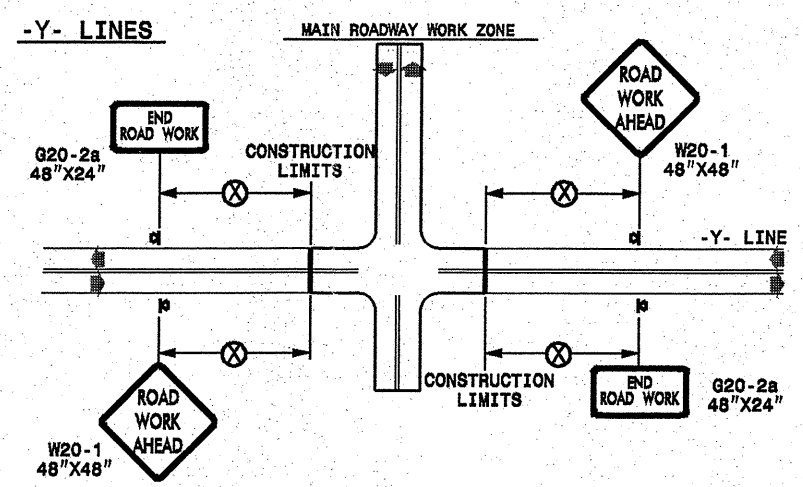
TWO-WAY UNDIVIDED ** (L-LINES)



POSTED SPEED LIMIT (M.P.H.)	RECOMMENDED MINIMUM SIGN SPACING
≤ 50	500'
≥ 55	1000'

STATE OF NORTH CAROLINA
DEPT. OF TRANSPORTATION
DIVISION OF HIGHWAYS
RALEIGH, N.C.

ROADWAYS INTERSECTING ALONG 2 WAY UNDIVIDED WORK ZONE (Y-LINES)



GENERAL NOTES

- USE FLUORESCENT ORANGE SHEETING (TYPE VII OR HIGHER) ON ALL ADVANCE WORK ZONE SIGNS.
- DO NOT INSTALL ADVANCE WARNING SIGNS MORE THAN 3 DAYS PRIOR TO BEGINNING OF WORK.
- ALL SIGN SPACING DIMENSIONS ARE APPROXIMATE, FIELD ADJUST AS NECESSARY OR AS DIRECTED.
- USE PORTABLE WORK ZONE SIGNS ONLY WITH PORTABLE WORK ZONE SIGN STANDS SPECIFICALLY DESIGNED FOR ONE ANOTHER. PORTABLE WORK ZONE SIGNS MAY BE ROLL UP OR APPROVED COMPOSITE.
- PROVIDE PORTABLE WORK ZONE SIGN STANDS, PORTABLE SIGNS AND SIGN SHEETING WHICH ARE LISTED ON THE NORTH CAROLINA DEPARTMENT OF TRANSPORTATION'S APPROVED PRODUCT LIST OR ACCEPTED AS TRAFFIC QUALIFIED BY THE TRAFFIC CONTROL UNIT.
- ** TWO-WAY UNDIVIDED ADVANCE WARNING SIGN CONFIGURATION MAY BE USED ON URBAN MULTI-LANE FACILITIES WHERE CONDITIONS LIMIT THE USE OF DUAL MOUNTED SIGNS AS DETERMINED BY THE ENGINEER.

LEGEND

◀ PORTABLE SIGN

➡ DIRECTION OF TRAFFIC FLOW

DETAIL DRAWING
FOR TWO-WAY UNDIVIDED
WORK ZONE WARNING SIGNS

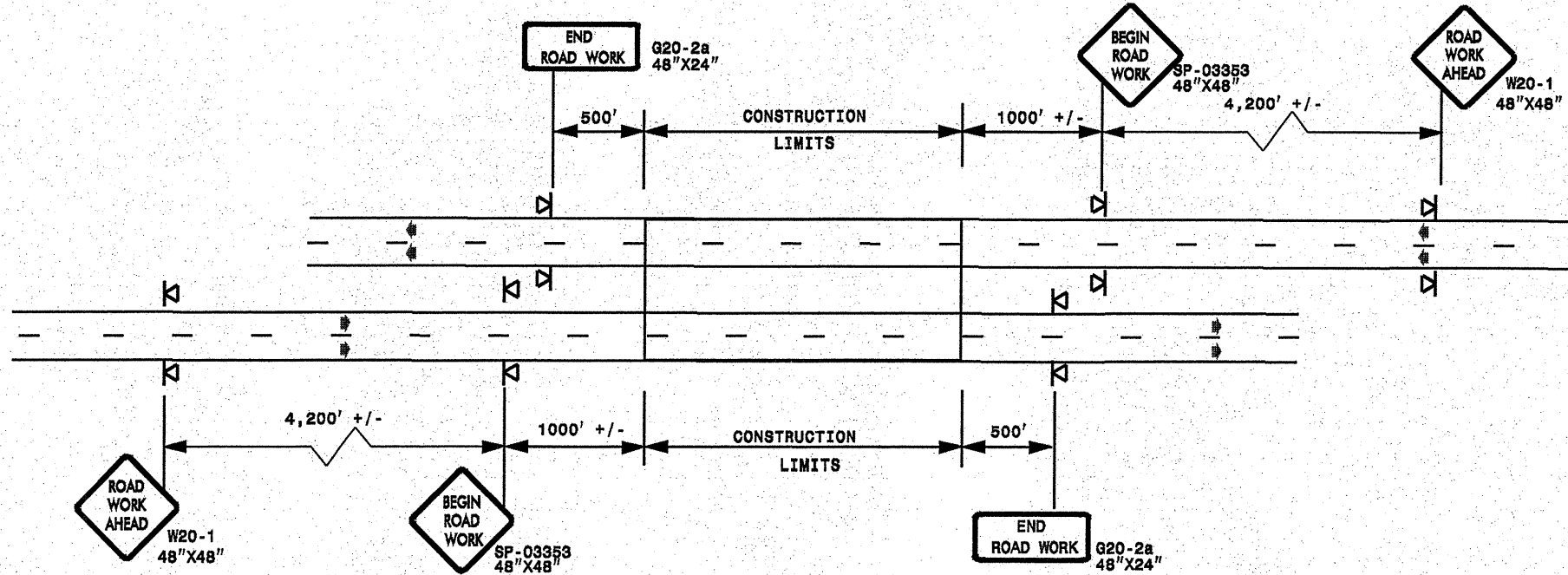
SHEET 1 OF 1

APPROVED: _____	DATE: _____	DETAIL DRAWING FOR TWO-WAY UNDIVIDED ADVANCED WORK ZONE WARNING SIGNS	
SEAL	SCALE: NONE		REVISIONS
	DATE:		7-98 10/01
	DWG. BY:		10-98 08/04
	DESIGN BY:		01/01 11/04
REVIEWED BY:			

01-SEP-2009 11:21 s:\signing\resurfacing\030509\resurfacing\030509.dwg\01\c202457a-1_10cr1013112x9_cabarrr.us.us601e1c\c202457a-1_10cr1013112x9_2wayundivurbfrwys\july2006_portable.dgn

ADVANCE WORK ZONE WARNING SIGNING FOR FREEWAYS (4 LANES OR GREATER)

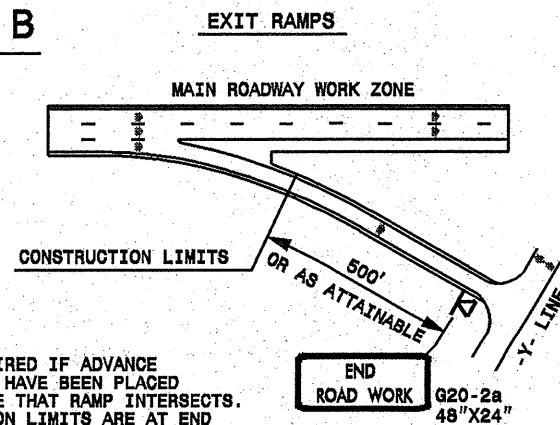
DETAIL A



STATE OF NORTH CAROLINA
DEPT. OF TRANSPORTATION
DIVISION OF HIGHWAYS
RALEIGH, N.C.

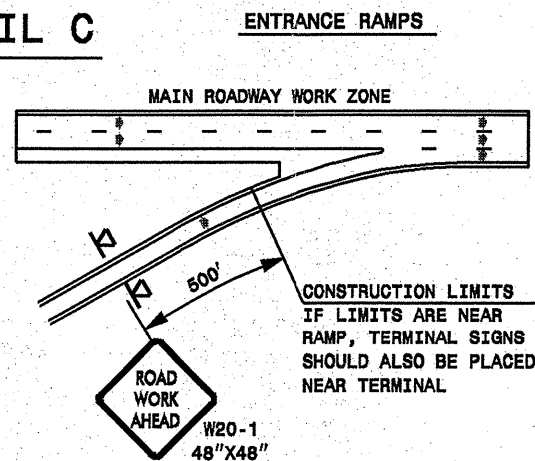
ROADWAYS INTERSECTING ALONG FREEWAY WORK ZONE (Y-LINES)

DETAIL B



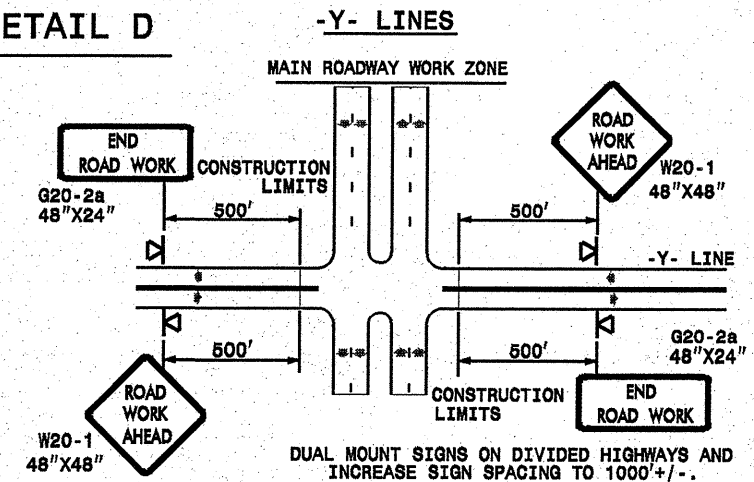
NOTE:
SIGN NOT REQUIRED IF ADVANCE WARNING SIGNS HAVE BEEN PLACED ALONG -Y- LINE THAT RAMP INTERSECTS. IF CONSTRUCTION LIMITS ARE AT END OF RAMP, PLACE SIGN AT END OF RAMP.

DETAIL C



CONSTRUCTION LIMITS IF LIMITS ARE NEAR RAMP, TERMINAL SIGNS SHOULD ALSO BE PLACED NEAR TERMINAL

DETAIL D



DETAIL DRAWING
FOR FREEWAYS
WORK ZONE WARNING SIGNS
(SHORT-DURATION LANE CLOSURES)

GENERAL NOTES

- USE FLUORESCENT ORANGE SHEETING (TYPE VII OR HIGHER) ON ALL ADVANCE WORK ZONE SIGNS.
- DO NOT INSTALL ADVANCE WARNING SIGNS MORE THAN 3 DAYS PRIOR TO BEGINNING OF WORK.
- ALL SIGN SPACING DIMENSIONS ARE APPROXIMATE, FIELD ADJUST AS NECESSARY OR AS DIRECTED.
- USE PORTABLE WORK ZONE SIGNS ONLY WITH PORTABLE WORK ZONE SIGN STANDS SPECIFICALLY DESIGNED FOR ONE ANOTHER. PORTABLE WORK ZONE SIGNS MAY BE ROLL UP OR APPROVED COMPOSITE.
- PROVIDE PORTABLE WORK ZONE SIGN STANDS, PORTABLE SIGNS AND SIGN SHEETING WHICH ARE LISTED ON THE NORTH CAROLINA DEPARTMENT OF TRANSPORTATION'S APPROVED PRODUCT LIST OR ACCEPTED AS TRAFFIC QUALIFIED BY THE TRAFFIC CONTROL UNIT.
- ** TWO-WAY UNDIVIDED ADVANCE WARNING SIGN CONFIGURATION MAY BE USED ON MULTI-LANE FACILITIES WHERE CONDITIONS LIMIT THE USE OF DUAL MOUNTED SIGNS AS DETERMINED BY THE ENGINEER.

LEGEND

- PORTABLE SIGN
- DIRECTION OF TRAFFIC FLOW

SHEET 1 OF 1

APPROVED: _____ DATE: _____	DETAIL DRAWING FOR FREEWAYS WORK ZONE WARNING SIGNS		REVISIONS	
SEAL			SCALE: NONE	7-98
	DATE: _____	10-98	09/04	
	DWG. BY: _____	01/01	11/04	
	DESIGN BY: _____			
	REVIEWED BY: _____			

01-SEP-2009 11:26 s:\signing\resur_facing\009\dwg\01\c202457a-1_10cr101312x3_cabar_rus.us60letc\c202457a-1_10cr101312x3_freelanesgreatJuly2006_portable.dgn