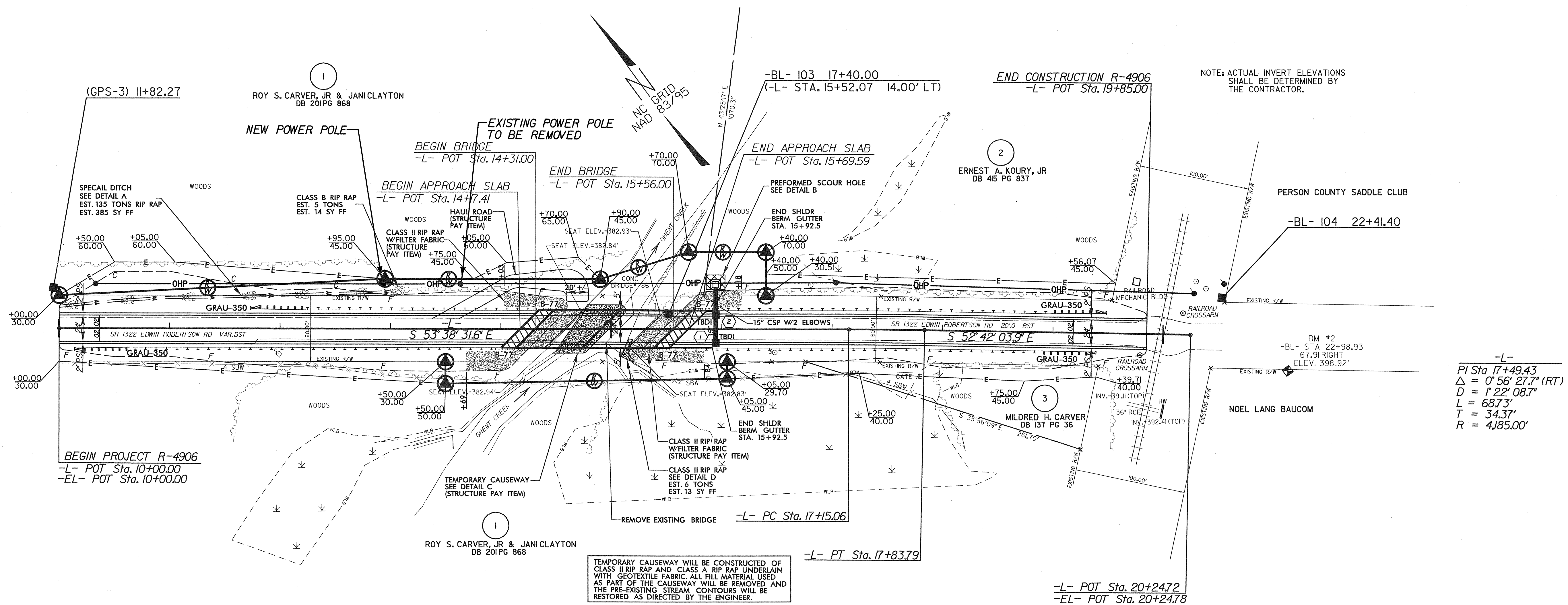
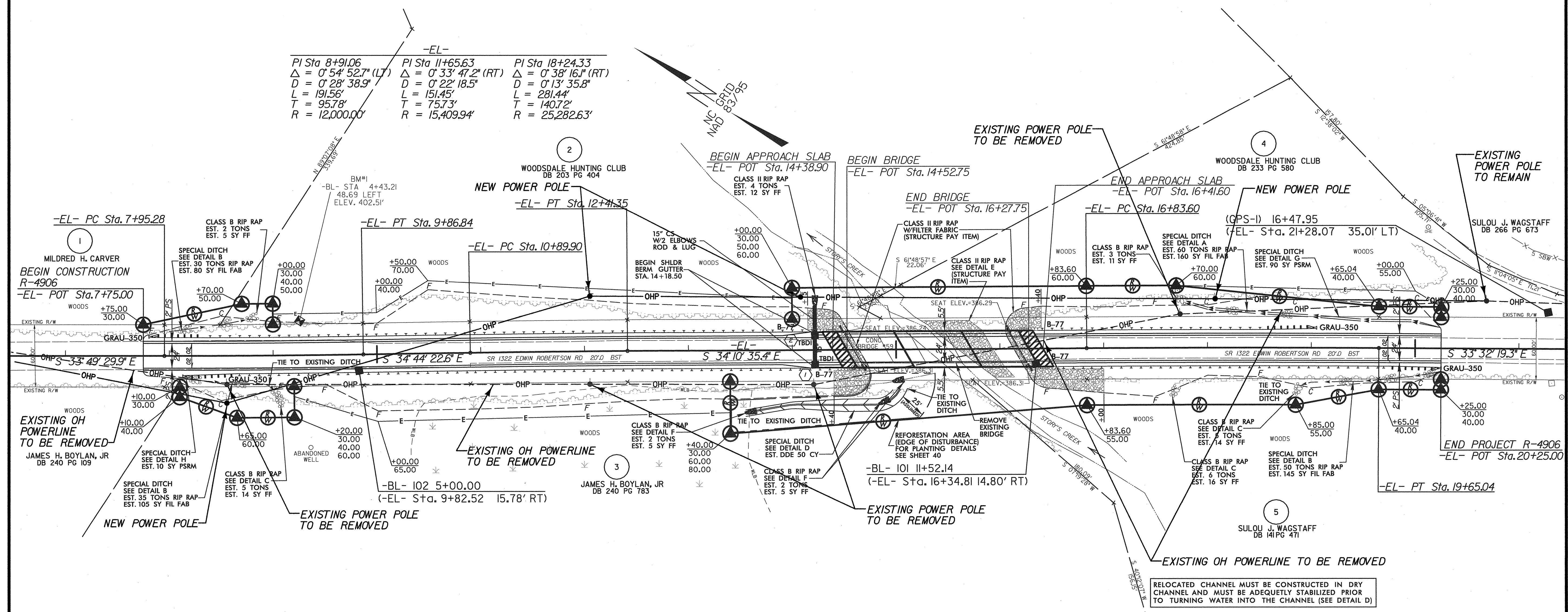


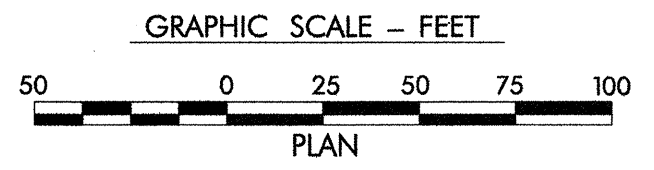
UTILITY CONFLICT PLAN



UTILITY CONFLICT PLAN



RELOCATED CHANNEL MUST BE CONSTRUCTED IN DRY CHANNEL AND MUST BE ADEQUETLY STABILIZED PRIOR TO TURNING WATER INTO THE CHANNEL (SEE DETAIL D)



LEGEND

- OHP--- DENOTES EXISTING OVERHEAD POWER LINE
- OHP— DENOTES NEW OVERHEAD POWER LINE