

STATE OF NORTH CAROLINA
DIVISION OF HIGHWAYS

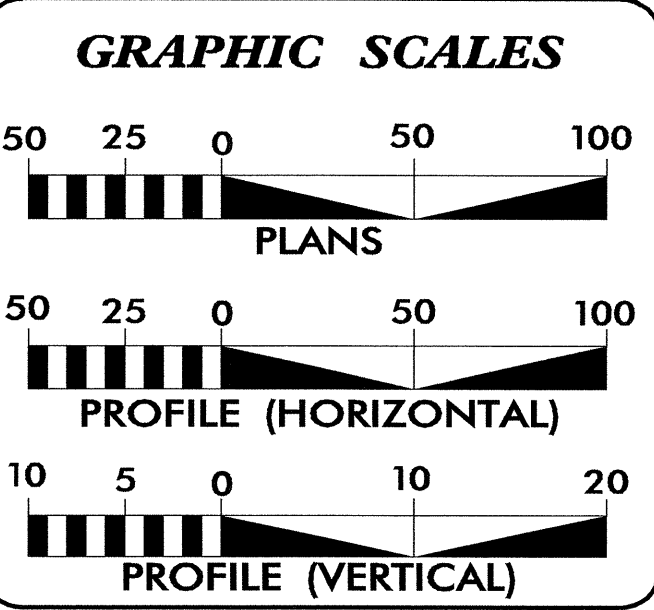
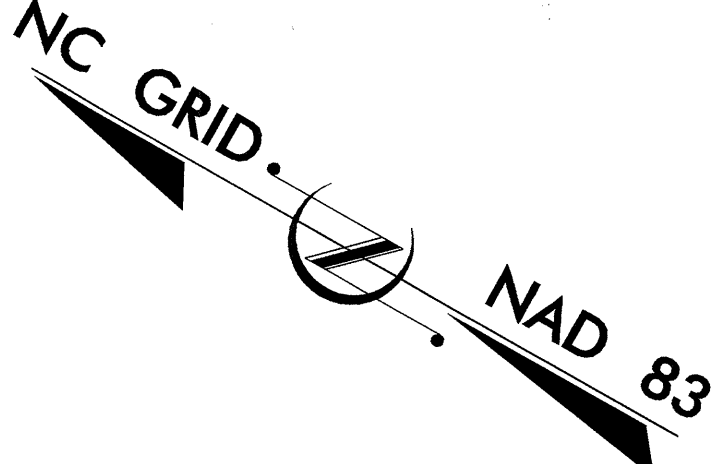
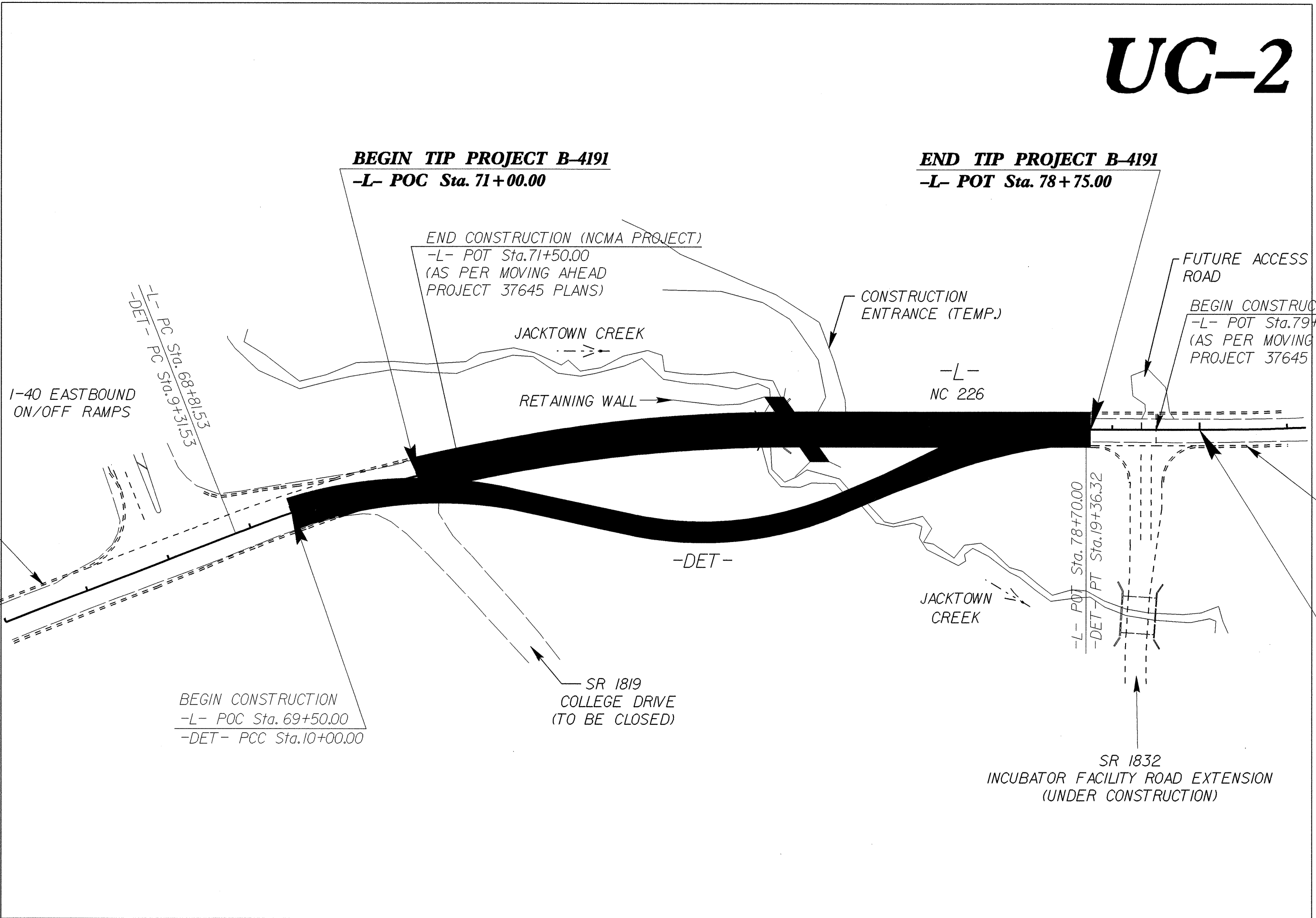
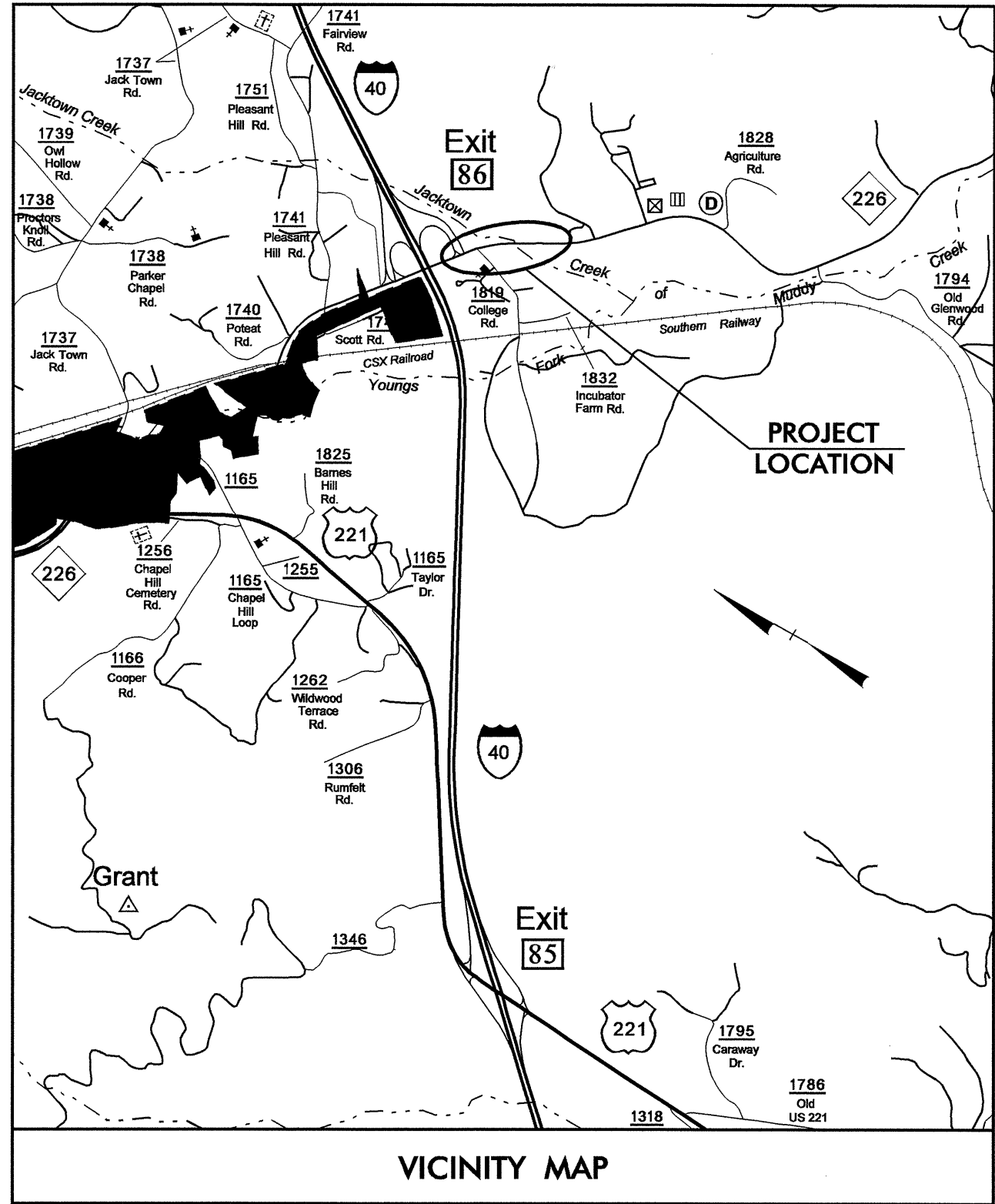
UTILITY CONSTRUCTION PLANS
McDOWELL COUNTY

LOCATION: BRIDGE NO. 82 OVER JACKTOWN CREEK ON NC 226

TYPE OF WORK: UTILITY CONSTRUCTION

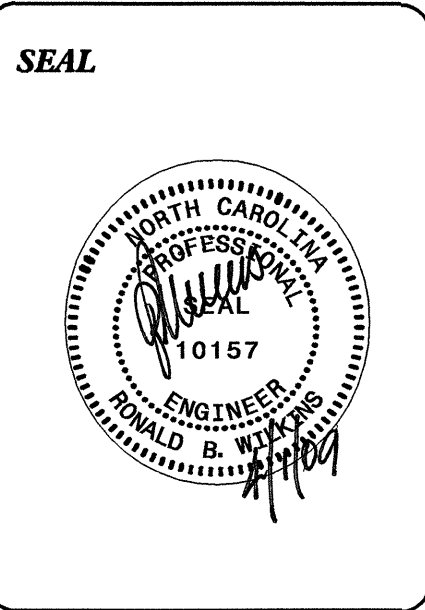
TIP PROJECT: B-4191

CONTRACT No. 202169



SHEET NO.	DESCRIPTION
UC-1	TITLE SHEET
UC-2	UTILITY CONSTRUCTION PLAN SHEET

- WATER AND SEWER OWNERS ON PROJECT**
- (1) WATER - TOWN OF MARION
 - (2) SANITARY SEWER - TOWN OF MARION



PREPARED IN THE OFFICE OF:

DIVISION OF HIGHWAYS
UTILITIES UNIT
UTILITIES ENGINEERING SECTION

1591 MAIL SERVICES CENTER
RALEIGH NC 27699-1591
PHONE (919) 250-4128
FAX (919) 250-4119

Roger Worthington, P.E. UTILITIES ENGINEERING SECTION ENGINEER
R. B. Wilkins, P.E. UTILITIES SQUAD LEADER PROJECT ENGINEER
John A. Nigro, P.E. UTILITIES PROJECT DESIGNER

01-APR-2009 14:59
F:\utilities\rdy\ut\proj\b-4191\ut_title_uc1.psh.dgn
\$\$\$\$\$USERNAME\$\$\$\$\$

'Sta 9+65.77
 = 2' 13' 31.5" (RT)
 = 3' 15' 00.0"
 = 68.47'
 = 34.24'
 = 1762.95'
 = 0.04 ft/ft
 = EXISTING
 = 35 mph

PI Sta 11+32.51
 $\Delta = 31' 10" 28.7"$ (RT)
 $D = 12' 03" 44.2"$
 $L = 258.45'$
 $T = 132.51'$
 $R = 475.00'$
 $SE = 0.06$ ft/ft
 $RO = 150'$
 $V = 35$ mph

PI Sta 15+20.16
 $\Delta = 35' 24" 56.6"$ (LT)
 $D = 14' 19" 26.2"$
 $L = 247.25'$
 $T = 127.72'$
 $R = 400.00'$
 $SE = 0.04$ ft/ft
 $RO = 100'$
 $V = 35$ mph

PI Sta 18+58.05 EMBANKMENT
 $\Delta = 23' 17" 41.1"$ (RT)
 $D = 14' 19" 26.2"$
 $L = 162.63'$
 $T = 82.45'$
 $R = 400.00'$
 $SE = 0.04$ ft/ft
 $RO = 100'$
 $V = 35$ mph

BEGIN TIP PROJECT B-4191
 -L- POT Sta. 71+00.00

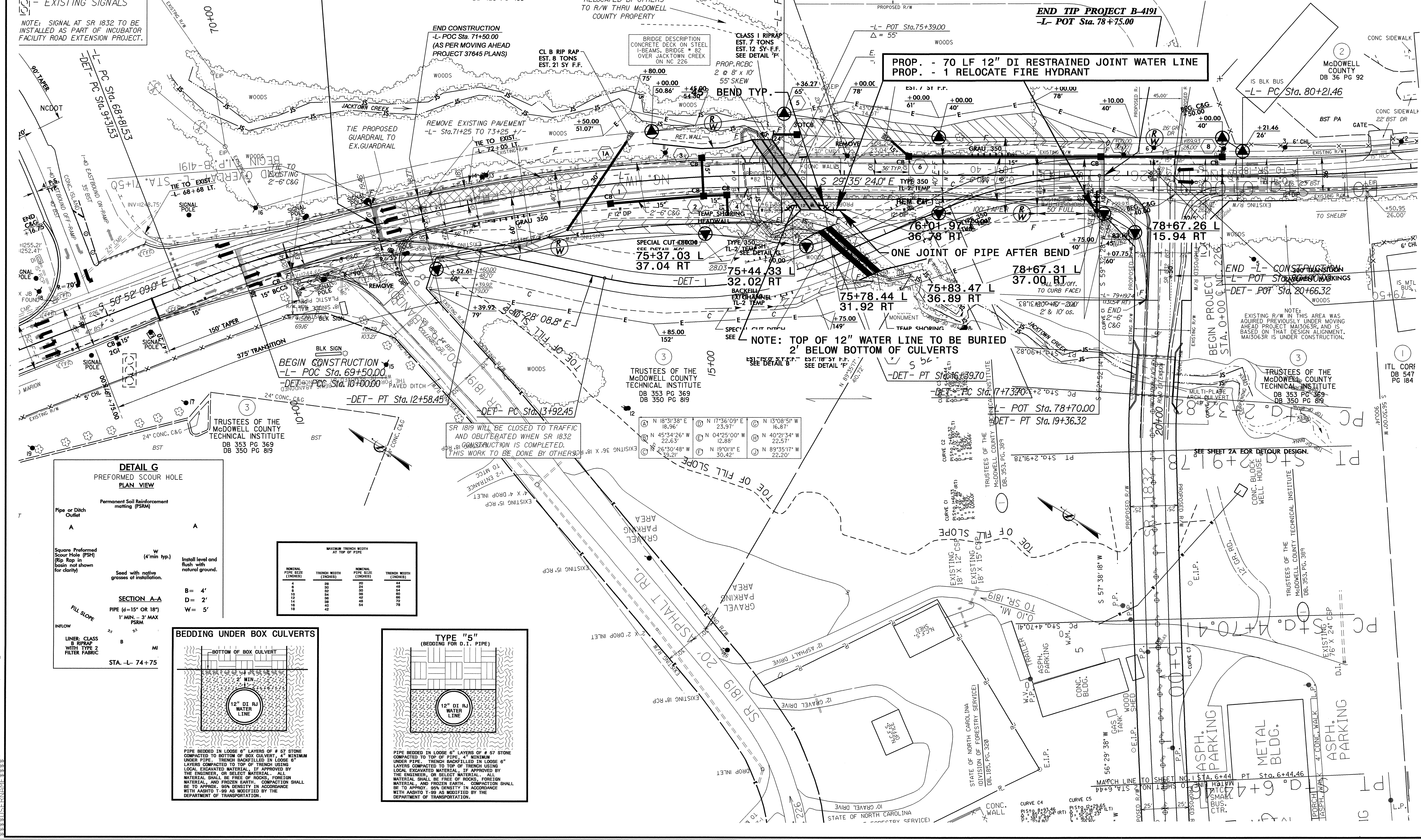
END TIP PROJECT B-4191
 -L- POT Sta. 78+75.00

UTILITY CONSTRUCTION

- EXISTING SIGNALS
 NOTE: SIGNAL AT SR 1832 TO BE INSTALLED AS PART OF INCUBATOR FACILITY ROAD EXTENSION PROJECT.

DAWN J. SMITH & LEO M. SMITH AND
 PHYLLIS J. LYNCH & LINARD P. LYNCH
 DB 420 PG 483

PROP. - 70 LF 12" DI RESTRAINED JOINT WATER LINE
 PROP. - 1 RELOCATE FIRE HYDRANT



END CONSTRUCTION
 -L- POC Sta. 71+50.00
 (AS PER MOVING AHEAD PROJECT 37645 PLANS)

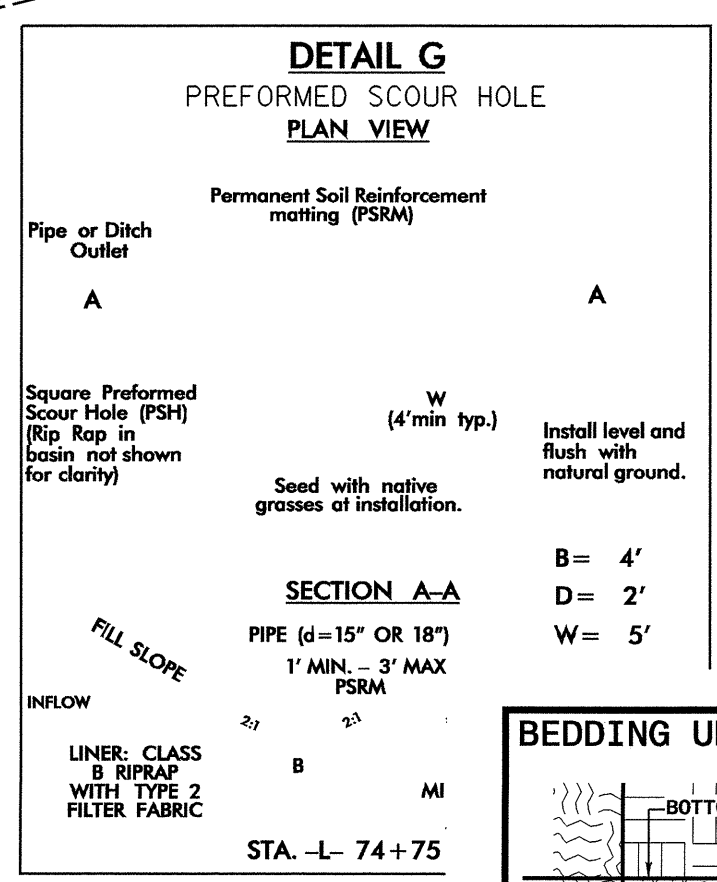
BRIDGE DESCRIPTION
 CONCRETE DECK ON STEEL
 I-BEAMS. BRIDGE # 82
 OVER JACKTOWN CREEK
 ON NC 226

SPECIAL CUT-EMBANK
 SEE DETAIL A
 75+37.03 L
 37.04 RT

ONE JOINT OF PIPE AFTER BEND
 75+78.44 L
 31.92 RT

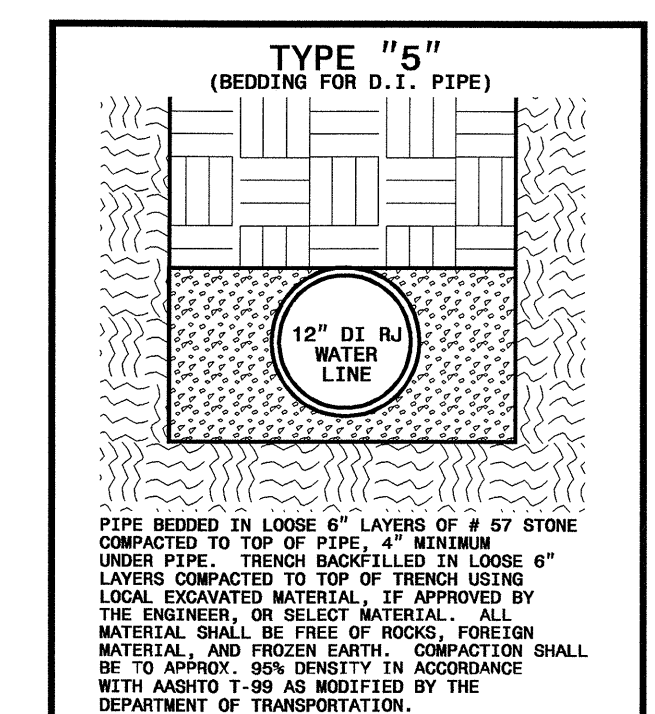
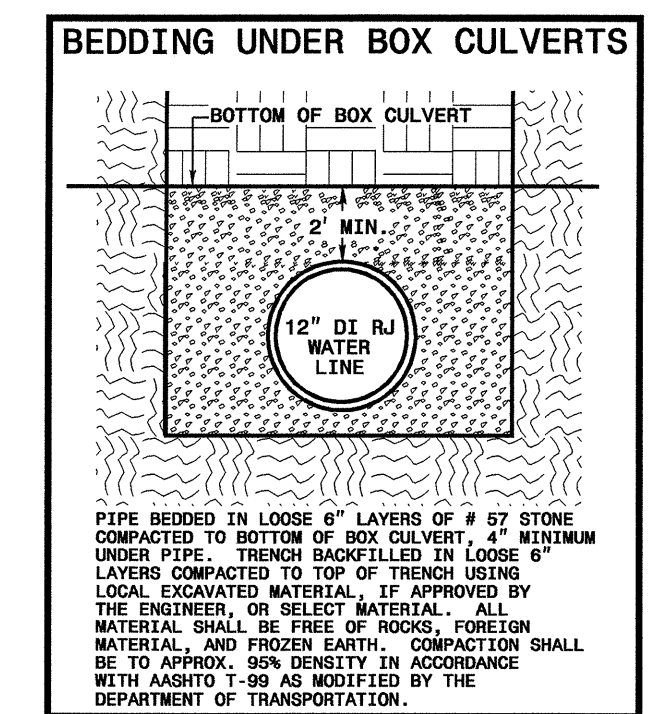
78+67.26 L
 15.94 RT

NOTE: TOP OF 12" WATER LINE TO BE BURIED 2' BELOW BOTTOM OF CULVERTS



MAXIMUM TRENCH WIDTH AT TOP OF PIPE

NOMINAL PIPE SIZE (INCHES)	TRENCH WIDTH (INCHES)	NOMINAL PIPE SIZE (INCHES)	TRENCH WIDTH (INCHES)
4	28	20	44
6	30	24	46
8	32	30	48
10	34	36	50
12	36	42	52
14	38	48	54
16	40	54	56



SR 1819 WILL BE CLOSED TO TRAFFIC AND OBLITERATED WHEN SR 1832 CONSTRUCTION IS COMPLETED.
 THIS WORK TO BE DONE BY OTHERS

A	N 18°31'38"E 18.96'	D	N 17°36'09"E 23.97'	G	N 13°08'51"W 16.87'
B	N 45°34'26"W 22.63'	E	N 04°25'00"W 12.88'	H	N 40°21'34"W 22.57'
C	N 26°30'48"W 30.42'	F	N 19°10'11"E 30.42'	I	N 89°35'17"W 22.20'

01-APR-2009 (5:01 PM) B:\Projects\11-4191\11-4191.dwg 4:uc2-ps-hd.mgn

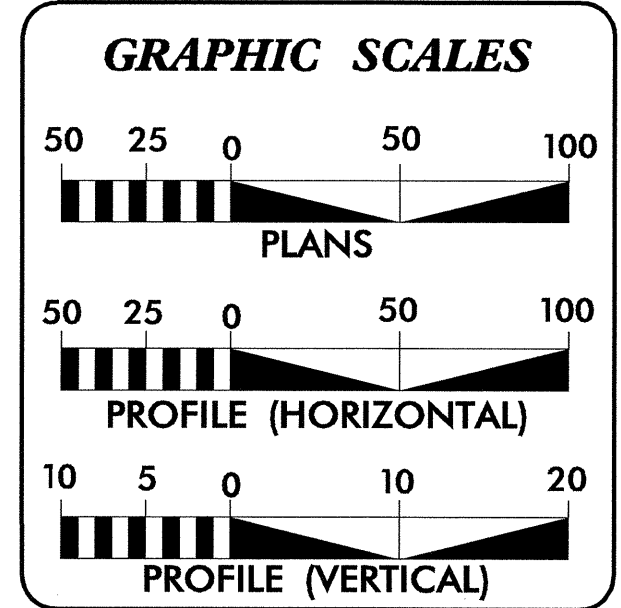
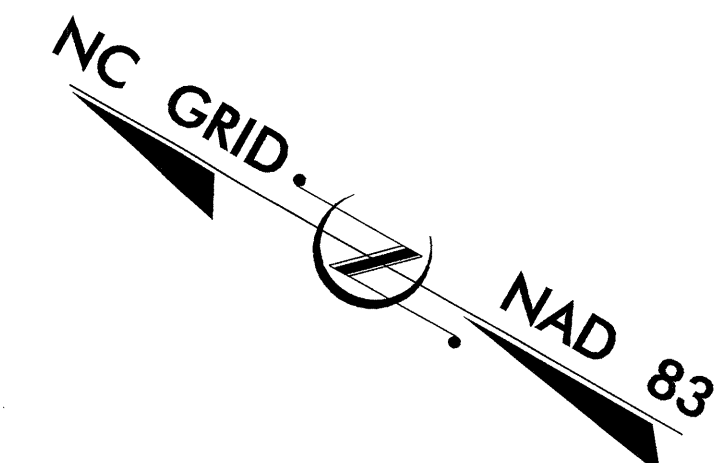
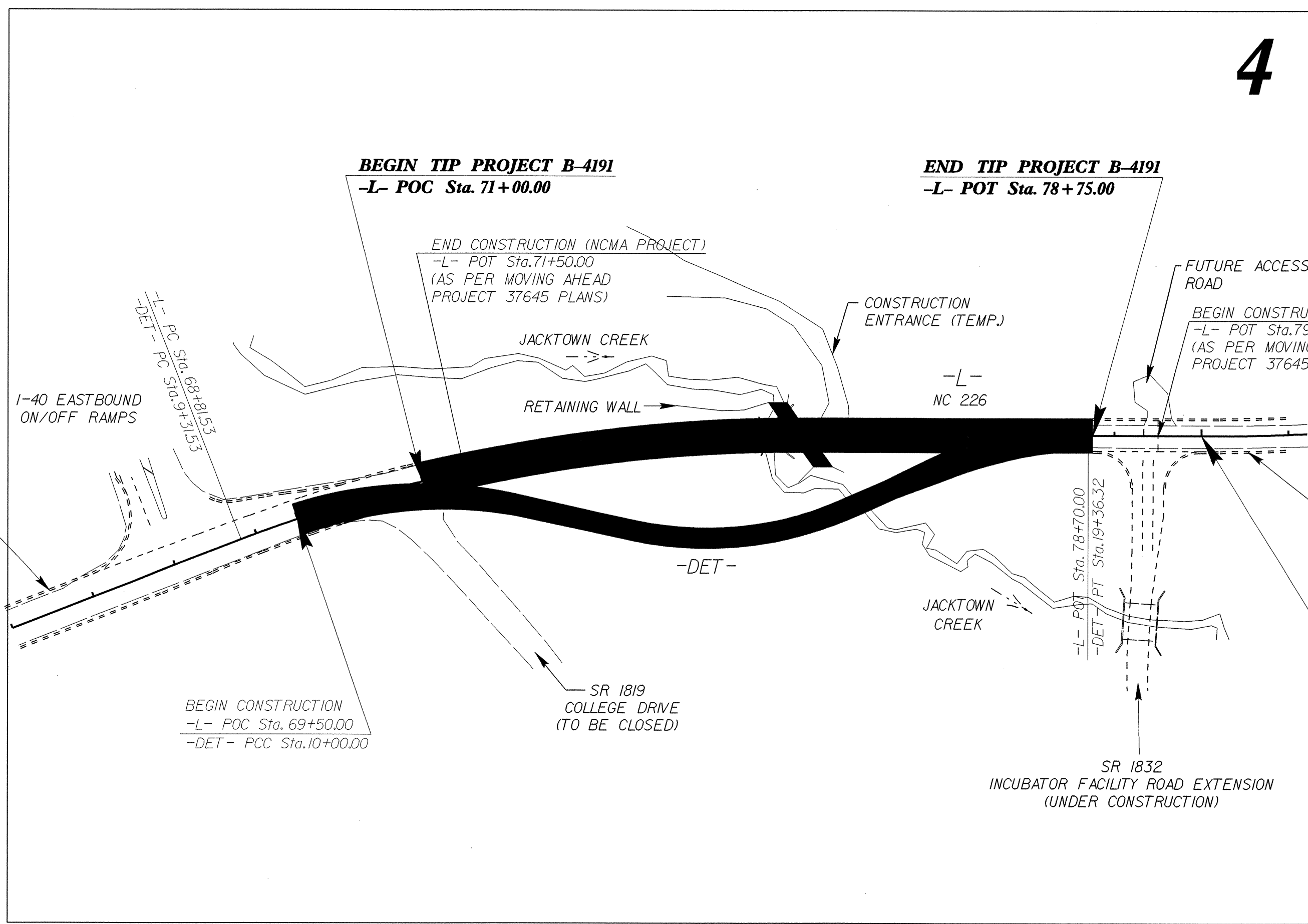
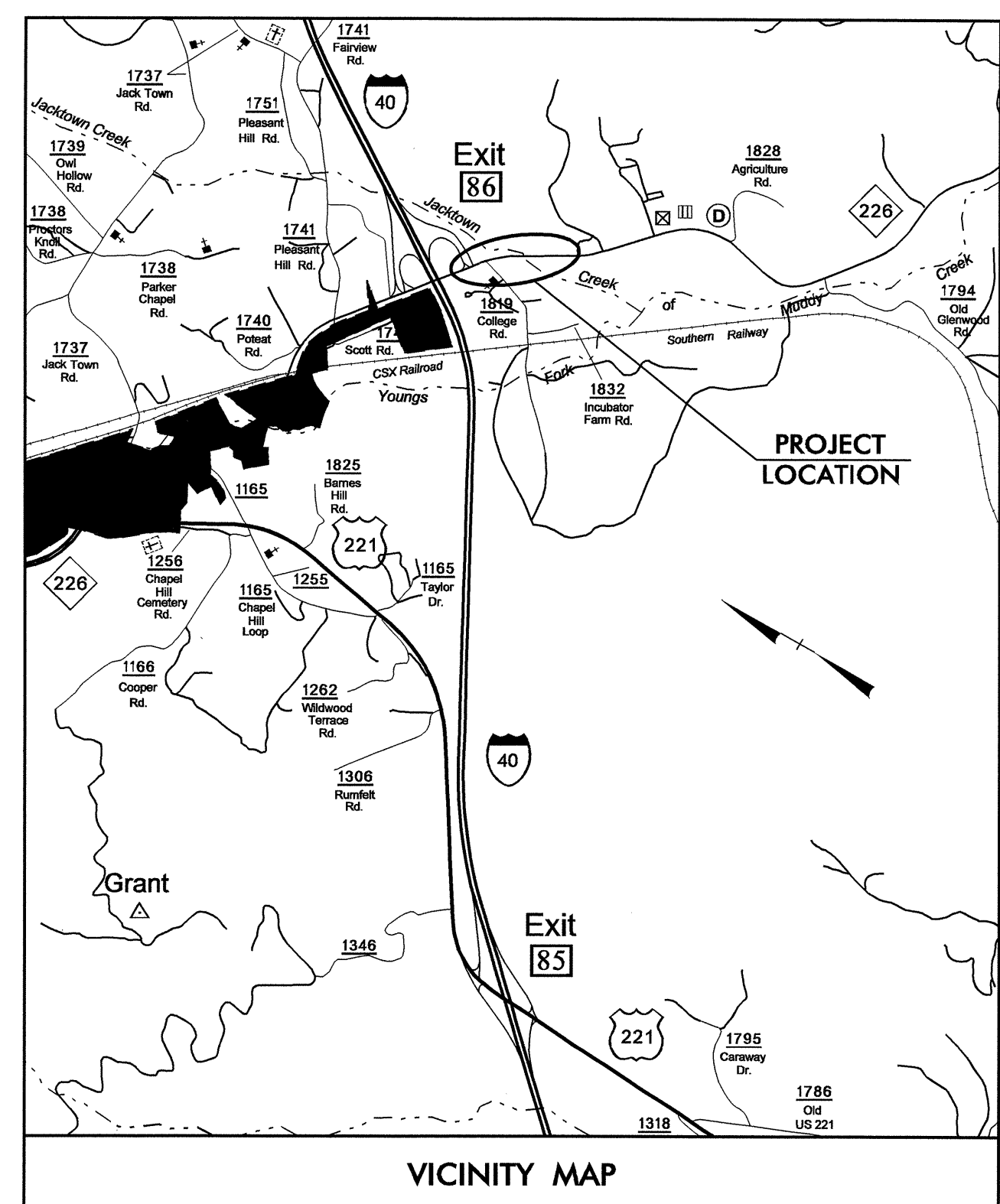
STATE OF NORTH CAROLINA
DIVISION OF HIGHWAYS

**UTILITY BY OTHERS PLANS
McDOWELL COUNTY**

LOCATION: BRIDGE NO. 82 OVER JACKTOWN CREEK ON NC 226

TYPE OF WORK: TELEPHONE AND CATV

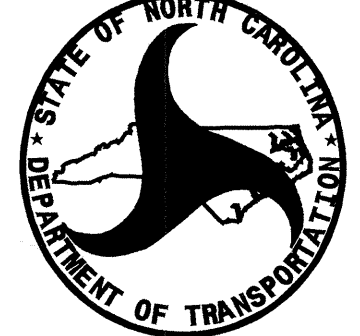
TIP PROJECT: B-4191



INDEX OF SHEETS

SHEET NO.	DESCRIPTION
UO-1	TITLE SHEET
UO-2	UTILITY BY OTHERS PLAN SHEET

- UTILITY OWNERS ON PROJECT**
- (1) POWER DISTRIBUTION DUKE ENERGY
 - (2) TELEPHONE - VERIZON
 - (3) CABLE TELEVISION - MEDIACOM



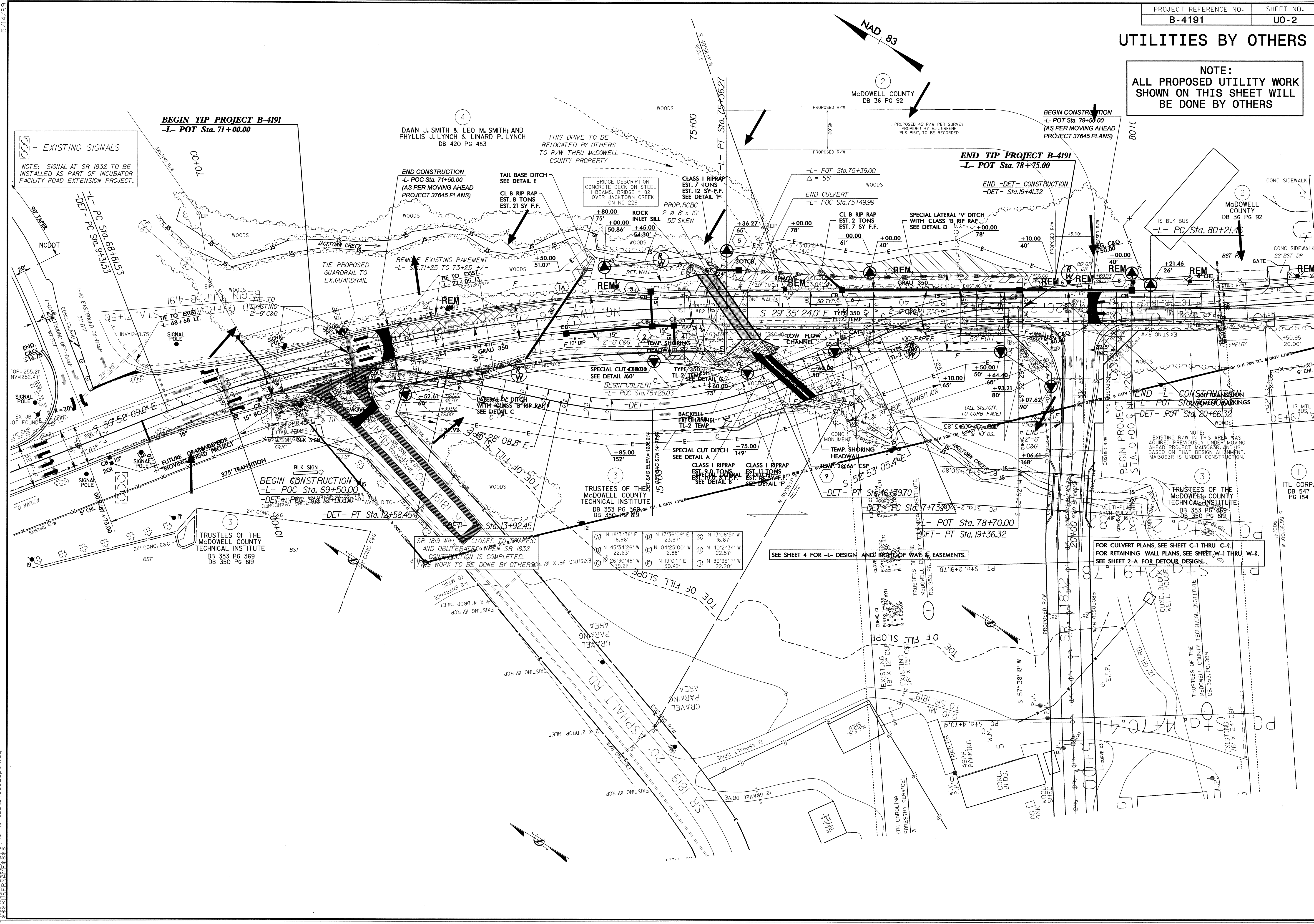
PREPARED IN THE OFFICE OF:
**DIVISION OF HIGHWAYS
UTILITY ENGINEERING
SECTION**

1591 MAIL SERVICES CENTER
RALEIGH NC 27699-1591
PHONE (919) 250-4128
FAX (919) 250-4119

Roger Worthington, P.E. UTILITIES SECTION ENGINEER
R. B. Wilkins, P.E. UTILITIES SQUAD LEADER PROJECT ENGINEER
John A. Nigro, P.E. UTILITIES PROJECT DESIGNER

UTILITIES BY OTHERS

NOTE:
ALL PROPOSED UTILITY WORK
SHOWN ON THIS SHEET WILL
BE DONE BY OTHERS



EXISTING SIGNALS
NOTE: SIGNAL AT SR 1832 TO BE INSTALLED AS PART OF INCUBATOR FACILITY ROAD EXTENSION PROJECT.

BEGIN TIP PROJECT B-4191
-L- POT Sta. 71+00.00

END TIP PROJECT B-4191
-L- POT Sta. 78+75.00

DAWN J. SMITH & LEO M. SMITH AND
PHYLIS J. LYNCH & LINARD P. LYNCH
DB 420 PG 483

THIS DRIVE TO BE
RELOCATED BY OTHERS
TO R/W THRU McDOWELL
COUNTY PROPERTY

BEGIN CONSTRUCTION
-L- POT Sta. 79+50.00
(AS PER MOVING AHEAD
PROJECT 37645 PLANS)

END CONSTRUCTION
-L- POT Sta. 71+50.00
(AS PER MOVING AHEAD
PROJECT 37645 PLANS)

END -DET- CONSTRUCTION
-DET- Sta. 19+41.32

McDOWELL COUNTY
DB 36 PG 92

BRIDGE DESCRIPTION
CONCRETE DECK ON STEEL
I-BEAMS, BRIDGE # 82
OVER JACKTOWN CREEK
ON NC 226

REMOVE EXISTING PAVEMENT
-L- STA. 71+25 TO 73+25

TAIL BASE DITCH
SEE DETAIL E

END CULVERT
-L- POT Sta. 75+39.00

END -DET- CONSTRUCTION
-DET- Sta. 19+41.32

END C&G
+16.75

BEGIN CONSTRUCTION
-L- POT Sta. 69+50.00
-DET- POT Sta. 10+00.00

TRUSTEES OF THE
McDOWELL COUNTY
TECHNICAL INSTITUTE
DB 353 PG 369
DB 350 PG 819

TRUSTEES OF THE
McDOWELL COUNTY
TECHNICAL INSTITUTE
DB 353 PG 369
DB 350 PG 819

TRUSTEES OF THE
McDOWELL COUNTY
TECHNICAL INSTITUTE
DB 353 PG 369
DB 350 PG 819

SR 1819 WILL BE CLOSED TO TRAFFIC
AND OBLITERATED WHEN SR 1832
CONSTRUCTION IS COMPLETED.
THIS WORK TO BE DONE BY OTHERS

①	N 18°31'38" E	18.96'	④	N 17°36'09" E	23.97'
②	N 45°34'26" W	22.63'	⑤	N 04°25'00" W	12.88'
③	N 26°30'48" W	39.21'	⑥	N 19°01'11" E	22.57'
⑦	N 13°08'51" W	16.87'	⑧	N 40°21'34" W	22.57'
⑨	N 19°01'11" E	30.42'	⑩	N 89°51'17" W	22.20'

SEE SHEET 4 FOR -L- DESIGN AND RIGHT-OF-WAY & EASEMENTS.

FOR CULVERT PLANS, SEE SHEET C-1 THRU C-2.
FOR RETAINING WALL PLANS, SEE SHEET W-1 THRU W-2.
SEE SHEET 2-A FOR DETOUR DESIGN.