

STATE OF NORTH CAROLINA
DIVISION OF HIGHWAYS

STATE PROJECT REFERENCE NO.	SHEET NO.
B - 4545	TCP-1

**PLAN FOR PROPOSED
TRAFFIC CONTROL, MARKING & DELINEATION
HENDERSON COUNTY**

B-4545

ROADWAY STANDARD DRAWINGS

THE FOLLOWING ROADWAY STANDARDS AS APPEAR IN "ROADWAY STANDARD DRAWINGS" - PROJECT SERVICES UNIT - N.C. DEPARTMENT OF TRANSPORTATION - RALEIGH, N.C., DATED JULY 2006 ARE APPLICABLE TO THIS PROJECT AND BY REFERENCE HEREBY ARE CONSIDERED A PART OF THESE PLANS:

STD. NO.	TITLE
1101.03	TEMPORARY ROAD CLOSURES
1110.01	STATIONARY WORK ZONE SIGNS
1110.02	PORTABLE WORK ZONE SIGNS
1145.01	BARRICADES

INDEX OF SHEETS

SHEET NO.	TITLE
TCP-1	LIST OF APPLICABLE ROADWAY STANDARD DRAWINGS, LEGEND, INDEX OF SHEETS, AND GENERAL NOTES
TCP-2	OFFSITE DETOUR SIGNING AND PHASING
SD-1	DETOUR SIGN DETAIL

GENERAL NOTES

CHANGES MAY BE REQUIRED WHEN PHYSICAL DIMENSIONS IN THE DETAIL DRAWINGS, STANDARD DETAILS AND ROADWAY DETAILS ARE NOT ATTAINABLE TO MEET FIELD CONDITIONS, OR RESULT IN DUPLICATE, OR UNDESIRED OVERLAPPING OF DEVICES. MODIFICATION MAY INCLUDE: MOVING, SUPPLEMENTING, COVERING OR REMOVAL OF DEVICES, AS DIRECTED BY THE ENGINEER.

THE FOLLOWING GENERAL NOTES APPLY AT ALL TIMES FOR THE DURATION OF THE CONSTRUCTION PROJECT, EXCEPT WHEN OTHERWISE NOTED IN THE PLAN, OR DIRECTED BY THE ENGINEER.

TRAFFIC PATTERN ALTERATIONS

A) NOTIFY THE ENGINEER TWENTY ONE (21) CALENDAR DAYS PRIOR TO ANY TRAFFIC PATTERN ALTERATION.

SIGNING

- B) PROVIDE PERMANENT SIGNING.
- C) PROVIDE DETOUR SIGNING WITHIN AND OFF THE PROJECT LIMITS.
- D) COVER OR REMOVE ALL DETOUR SIGNS WITHIN AND OFF THE PROJECT LIMITS WHEN A DETOUR IS NOT IN OPERATION.
- E) ENSURE ALL NECESSARY SIGNING IS IN PLACE PRIOR TO ALTERING ANY TRAFFIC PATTERN.
- F) PLACE TYPE III BARRICADES, ALONG WITH "ROAD CLOSED" SIGN R11-2 ATTACHED, OF SUFFICIENT LENGTH TO CLOSE ENTIRE ROADWAY.

LEGEND

GENERAL

- DIRECTION OF TRAFFIC FLOW
- NORTH ARROW
- PROPOSED PVMT. EXIST. PVMT.
- WORK AREA
- REMOVAL OF EXISTING PAVEMENT

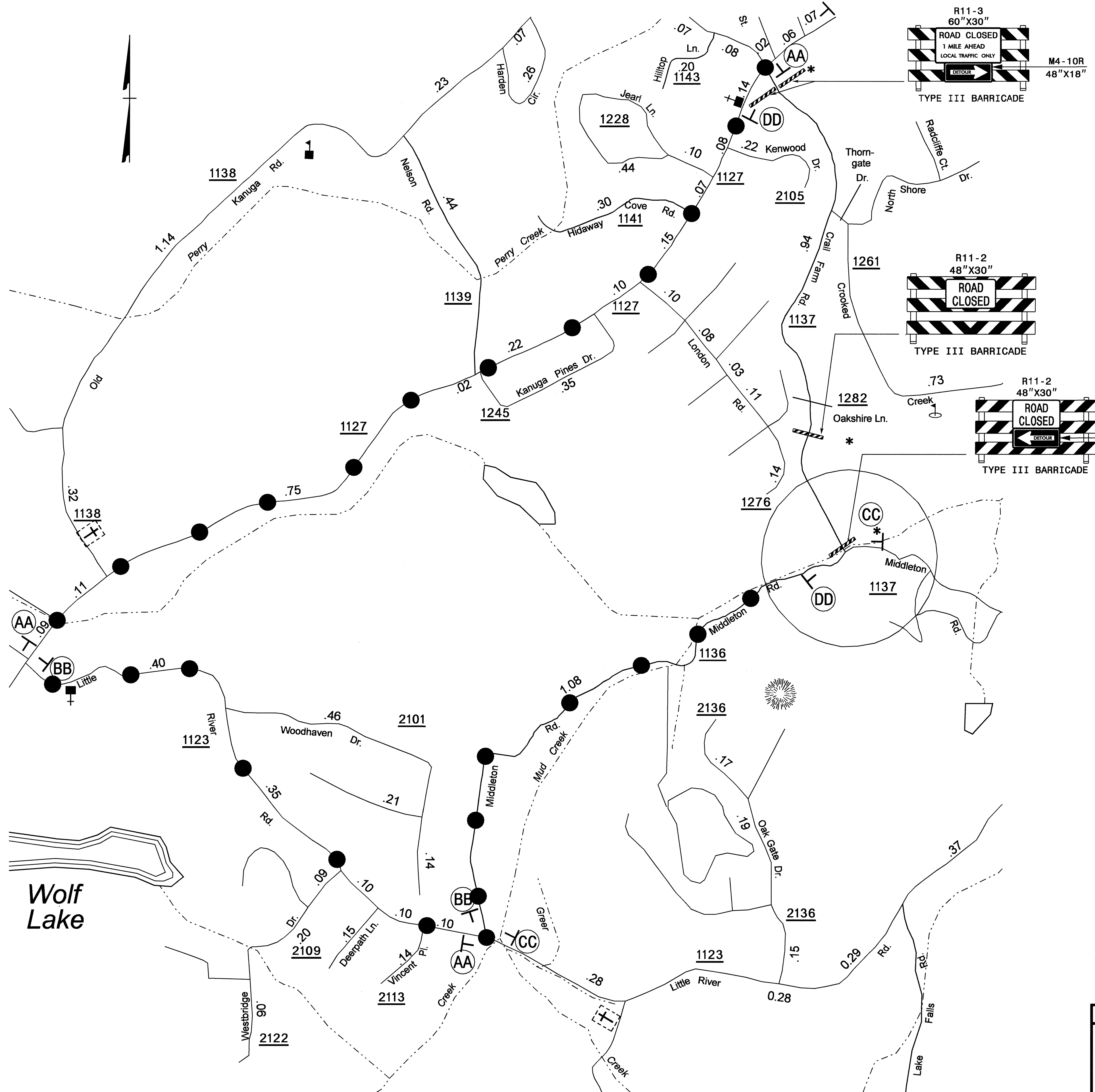
TRAFFIC CONTROL DEVICES

- TYPE I BARRICADE
- TYPE II BARRICADE
- TYPE III BARRICADE
- CONE
- DRUM SKINNY DRUM
- FLASHING ARROW PANEL (TYPE C)
- STATIONARY SIGN
- PORTABLE SIGN
- STATIONARY OR PORTABLE SIGN
- CRASH CUSHION
- CHANGEABLE MESSAGE SIGN
- TRUCK MOUNTED IMPACT ATTENUATOR (TMIA)
- POLICE
- FLAGGER

03-OCT-2008 09:44
\\DOT\DFSROOT\PROJ\proj\projects-b\4545\traffic\trafficcontrol\tcp\4545-fc-top-1.ttl.dgn
SHASSAN AT WZTC244739

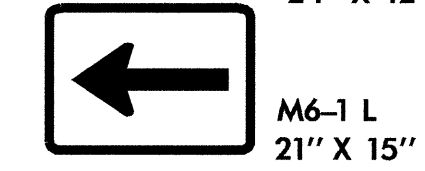
TIP PROJECT:

APPROVED:	PLAN PREPARED BY: N.C.D.O.T. WORK ZONE TRAFFIC CONTROL UNIT
DATE: 5-26-09	
SEAL	J.S. BOURNE, P.E. TRAFFIC CONTROL ENGINEER
	G.L. GETTIER, P.E. TRAFFIC CONTROL PROJECT ENGINEER
	J.W. WOOLARD JR., P.E. TRAFFIC CONTROL PROJECT DESIGN ENGINEER
	SAJID HASSAN, E.I.T. TRAFFIC CONTROL DESIGN ENGINEER / TECHNICIAN



CRAIL FARM RD **

DETOUR M4-8
24" X 12"

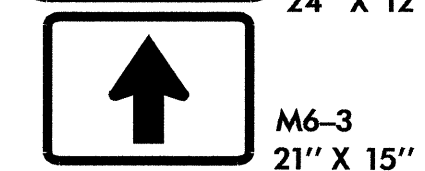


M6-1 L
21" X 15"

SIGN (AA)

CRAIL FARM RD **

DETOUR M4-8
24" X 12"

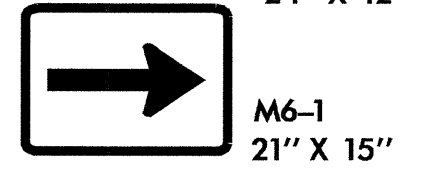


M6-3
21" X 15"

SIGN (CC)

CRAIL FARM RD **

DETOUR M4-8
24" X 12"



M6-1
21" X 15"

SIGN (BB)

CRAIL FARM RD **

END
DETOUR M4-8 A
24" X 18"

SIGN (DD)

PHASING

- STEP 1: - INSTALL OFF-SITE DETOUR ROUTE SIGN ASSEMBLIES FOR THE CLOSING OF SR 1137 (CRAIL FARM ROAD).
- USING ROADWAY STANDARD DRAWING NO. 1101.03, SHEET 1 OF 9, CLOSE SR 1137 (CRAIL FARM ROAD) TO THRU TRAFFIC SEE SHEET TCP-2.
- STEP 2: - REMOVE THE EXISTING STRUCTURE AND CONSTRUCT THE PROPOSED STRUCTURE AND ROADWAY UP TO AND INCLUDING THE FINAL LAYER OF SURFACE COURSE. SEE CONSTRUCTION PLANS.
- STEP 3: - REMOVE ALL TRAFFIC CONTROL DEVICES AND DETOUR ROUTE SIGNING.
- REOPEN SR 1137 (CRAIL FARM ROAD) TO THE FINAL TRAFFIC PATTERN.

NOTES

- ALL DETOUR SIGNS ARE BLACK ON ORANGE UNLESS OTHERWISE NOTED.
 - ALL DETOUR SIGNS ARE APPROXIMATE.
- * SEE ROADWAY STANDARD DRAWING NO. 1101.03, SHEET 1 OF 9, AND SHEET 2 OF 9, ON SR 1137 (CRAIL FARM ROAD).
- ** SEE SD-1 FOR SIGN DESIGN

APPROVED: <i>J.W. Woolard</i> DATE: 5-26-09	OFFSITE DETOUR SIGNING AND PHASING	
	SCALE: NONE	
	DATE: 08/08	
	DWG. BY: SH	
	DESIGN BY: SH	
REVIEWED BY: JWW	REVISIONS	

02-OCT-2008 12:20
 \\DOT\dfsroot\DOT\PROJ\TIP\projects-b\4545\trafficcontrol\top\b-4545-to_tcp.dtr.dgn
 shassan AT WTC24739