

**STATE OF NORTH CAROLINA  
DIVISION OF HIGHWAYS**

NOTE: EMBANKMENT COLUMN DOES NOT INCLUDE BACKFILL FOR UNDERCUT

**CROSS-SECTION SUMMARY**

Station DETOUR L	Uncl. Exc. (cu. yd.)	Embt (cu. yd.)
13+70.24	0.0	0.0
14+00.00	0.0	0.0
14+50.00	10.5	0.1
15+00.00	10.4	3.4
15+50.00	16.4	2.7
16+00.00	36.2	0.7
16+50.00	27.4	2.9
17+00.00	26.7	10.0
17+50.00	0.0	65.9
17+57.74	0.0	65.9

Station DETOUR REMOVAL	Uncl. Exc. (cu. yd.)	Embt (cu. yd.)
13+70.24	0.0	0.0
14+00.00	0.0	0.0
14+50.00	0.1	4.7
15+00.00	3.4	10.4
15+50.00	2.7	10.2
16+00.00	0.0	23.2
16+50.00	1.9	14.7
17+00.00	7.4	15.7
17+50.00	65.9	0.0
17+57.74	65.9	0.0

Station DETOUR L	Uncl. Exc. (cu. yd.)	Embt (cu. yd.)
18+17.68	17.7	78.0
18+50.00	17.7	78.0
19+00.00	7.7	95.1
19+50.00	14.5	101.8
20+00.00	4.1	75.9
20+50.00	7.4	29.7
21+00.00	7.5	7.8
21+50.00	4.4	0.0
21+98.00	0.0	0.0

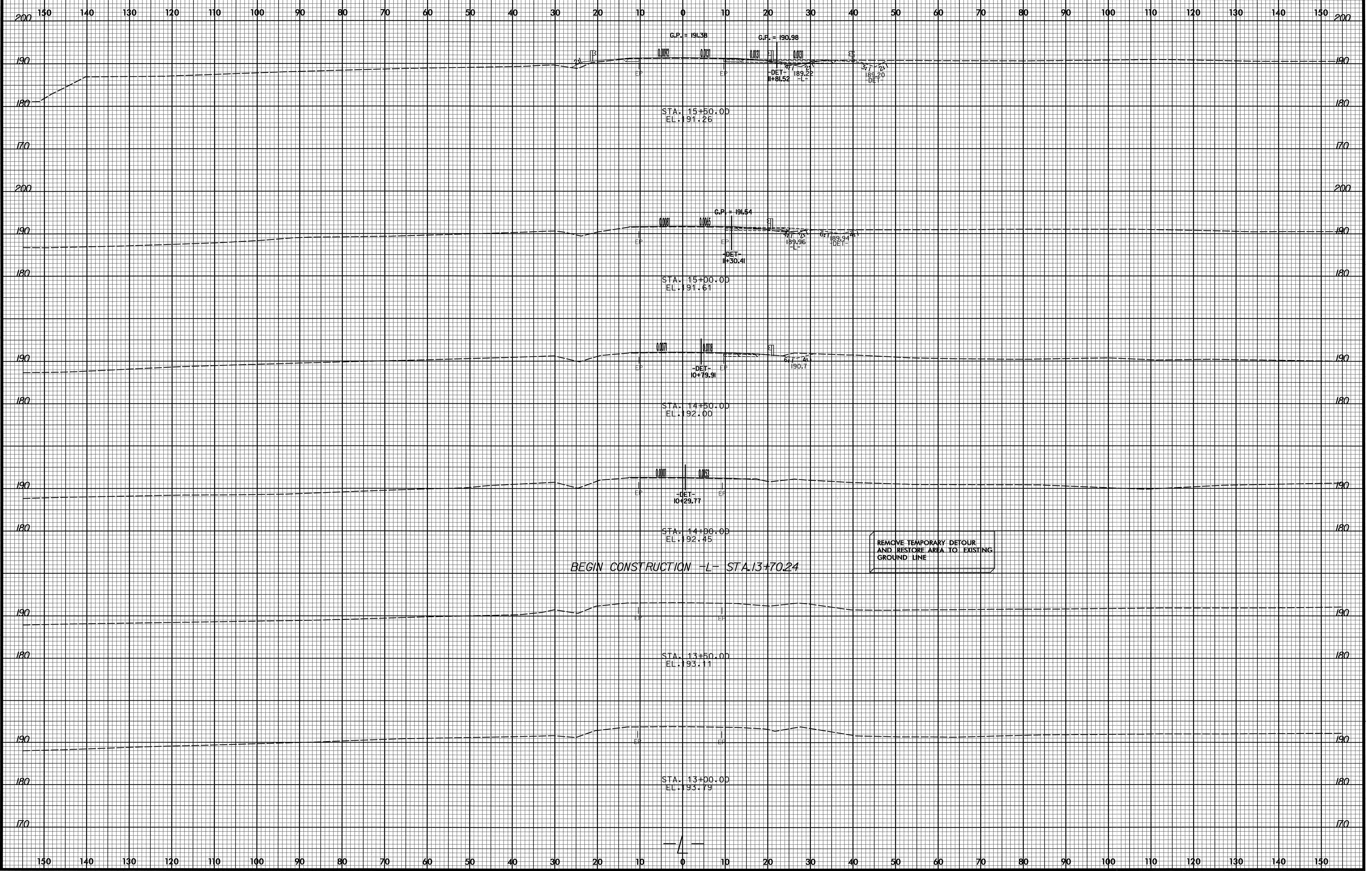
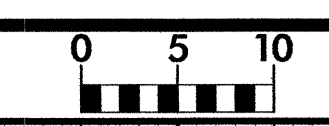
Station DETOUR REMOVAL	Uncl. Exc. (cu. yd.)	Embt (cu. yd.)
18+17.68	78.0	0.0
18+50.00	78.0	0.0
19+00.00	95.1	0.0
19+50.00	101.8	0.0
20+00.00	75.9	0.0
20+50.00	29.7	0.0
21+00.00	7.8	0.0
21+50.00	0.0	0.0
21+98.00	0.0	0.0

Station L	Uncl. Exc. (cu. yd.)	Embt (cu. yd.)
13+70.24	0.0	0.0
14+00.00	0.6	0.1
14+50.00	0.1	3.5
15+00.00	1.6	10.5
15+50.00	2.3	10.0
16+00.00	5.1	9.6
16+50.00	6.7	11.6
16+98.00	7.5	5.3

Station L	Uncl. Exc. (cu. yd.)	Embt (cu. yd.)
18+03.00	5.6	5.3
18+50.00	5.6	5.3
19+00.00	4.9	15.0
19+50.00	2.3	21.8
20+00.00	0.0	9.8
20+50.00	0.0	13.5
21+00.00	0.0	2.4
21+50.00	0.0	4.4
21+98.00	0.0	0.0

Approximate quantities only. Unclassified excavation, borrow excavation, fine grading, clearing and grubbing and removal of existing pavement will be paid for at the lump sum price for "Grading".

8/23/99

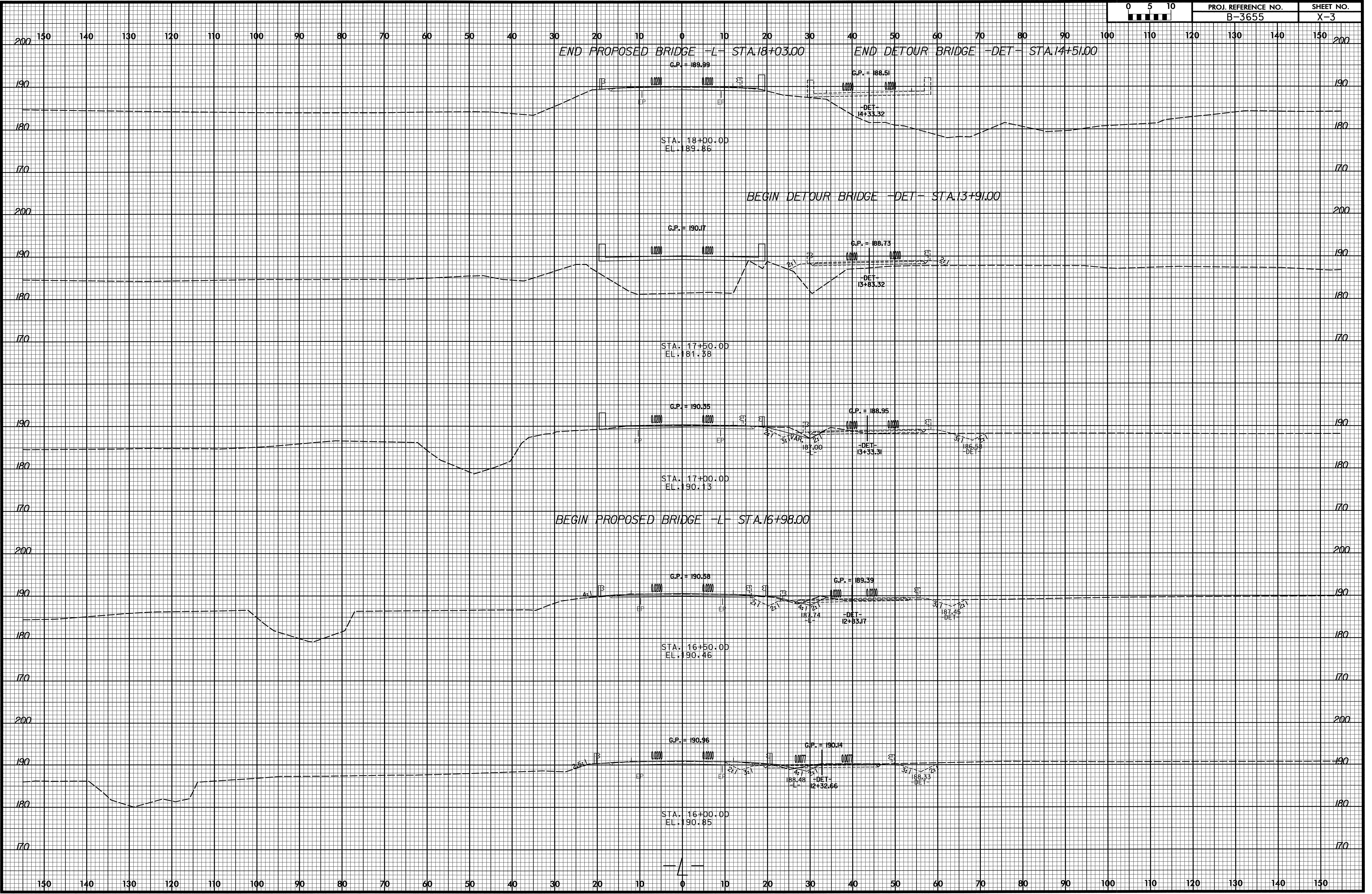


BEGIN CONSTRUCTION -L- STA.13+70.24

REMOVE TEMPORARY DETOUR  
AND RESTORE AREA TO EXISTING  
GROUND LINE

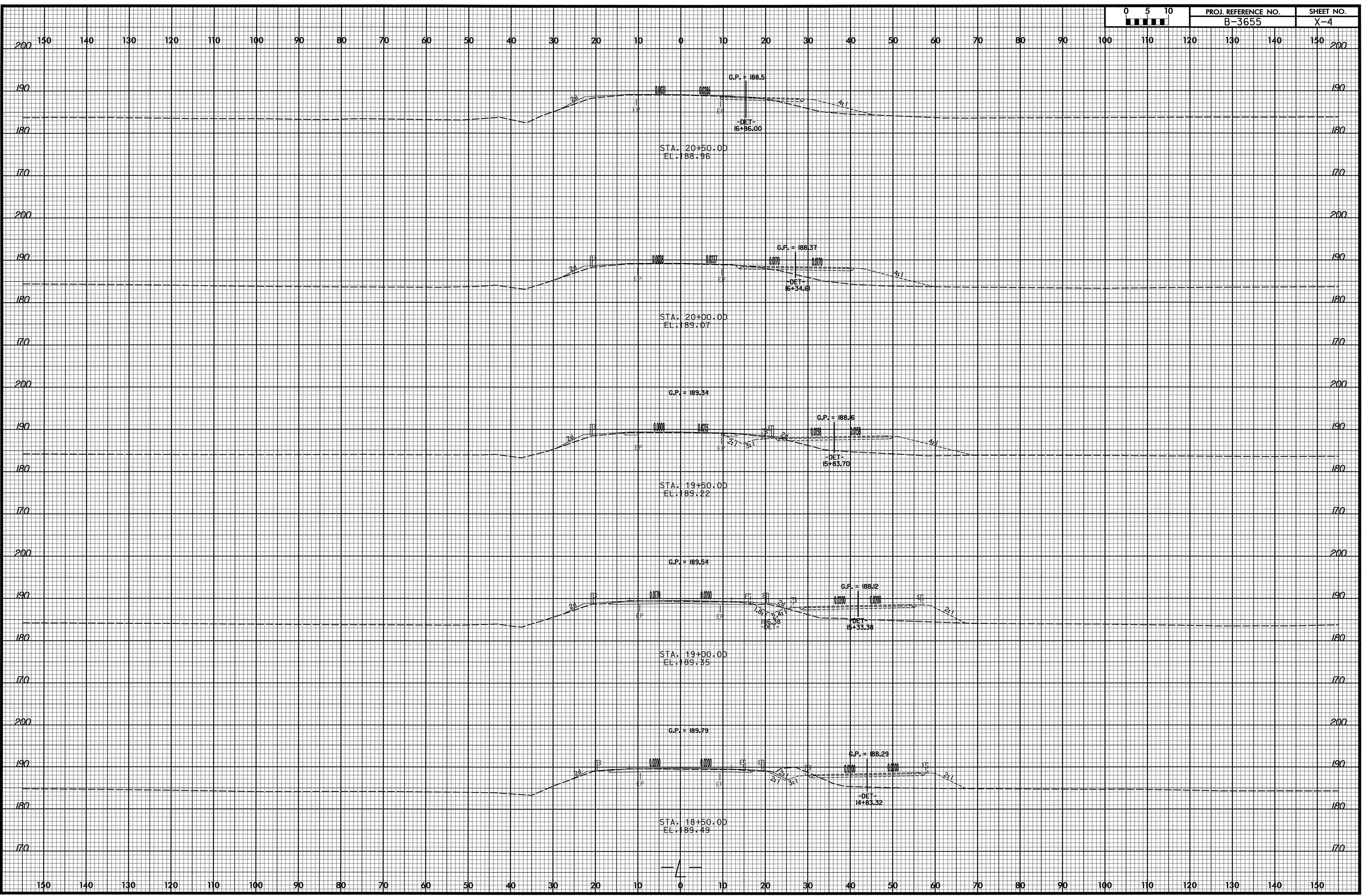
1/22/2009  
R:\Roadway\Xsec\B3655\_Rdy\_xp1.dgn  
K & Associates, P.C.

8/23/09



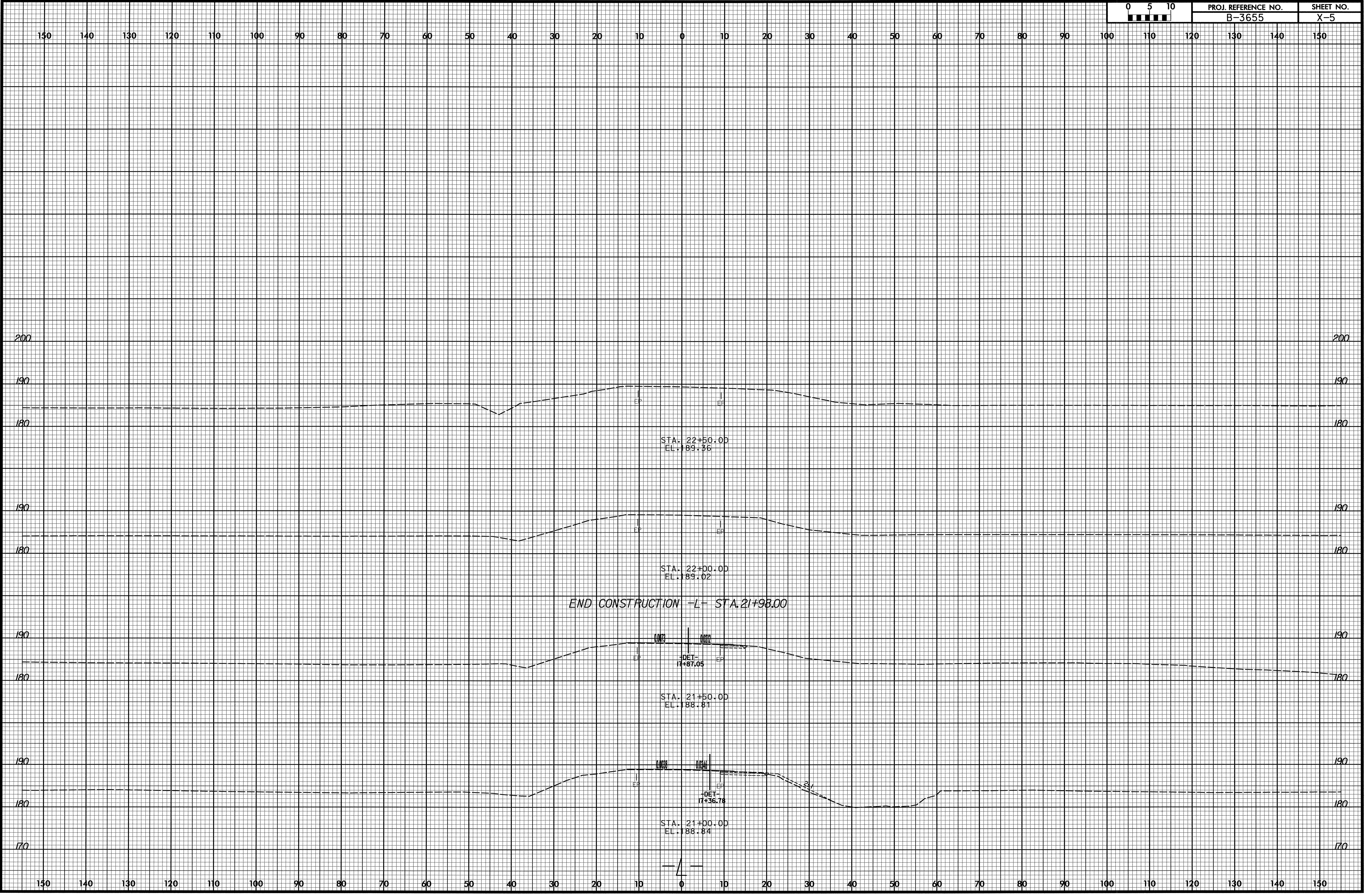
1/22/2009  
R:\Roadway\Xsec\B3655\_Rdy\_xp1.dgn  
K & Associates, P.C.

8/23/99



1/22/2009  
R:\Roadway\Xac\B3655\_Rdy\_xp1.dgn  
K & Associates, P.C.

8/23/99  
1/22/2009  
R:\Fogdkey\Xac\B3655\_Rdy\_xpl.dgn  
K & Associates, P.C.



END CONSTRUCTION -L- STA. 21+98.00

STA. 22+50.00  
EL. 189.36

STA. 22+00.00  
EL. 189.02

STA. 21+50.00  
EL. 188.81

STA. 21+00.00  
EL. 188.84

DEP-  
17+87.08

DEP-  
17+36.78

