

09/08/99

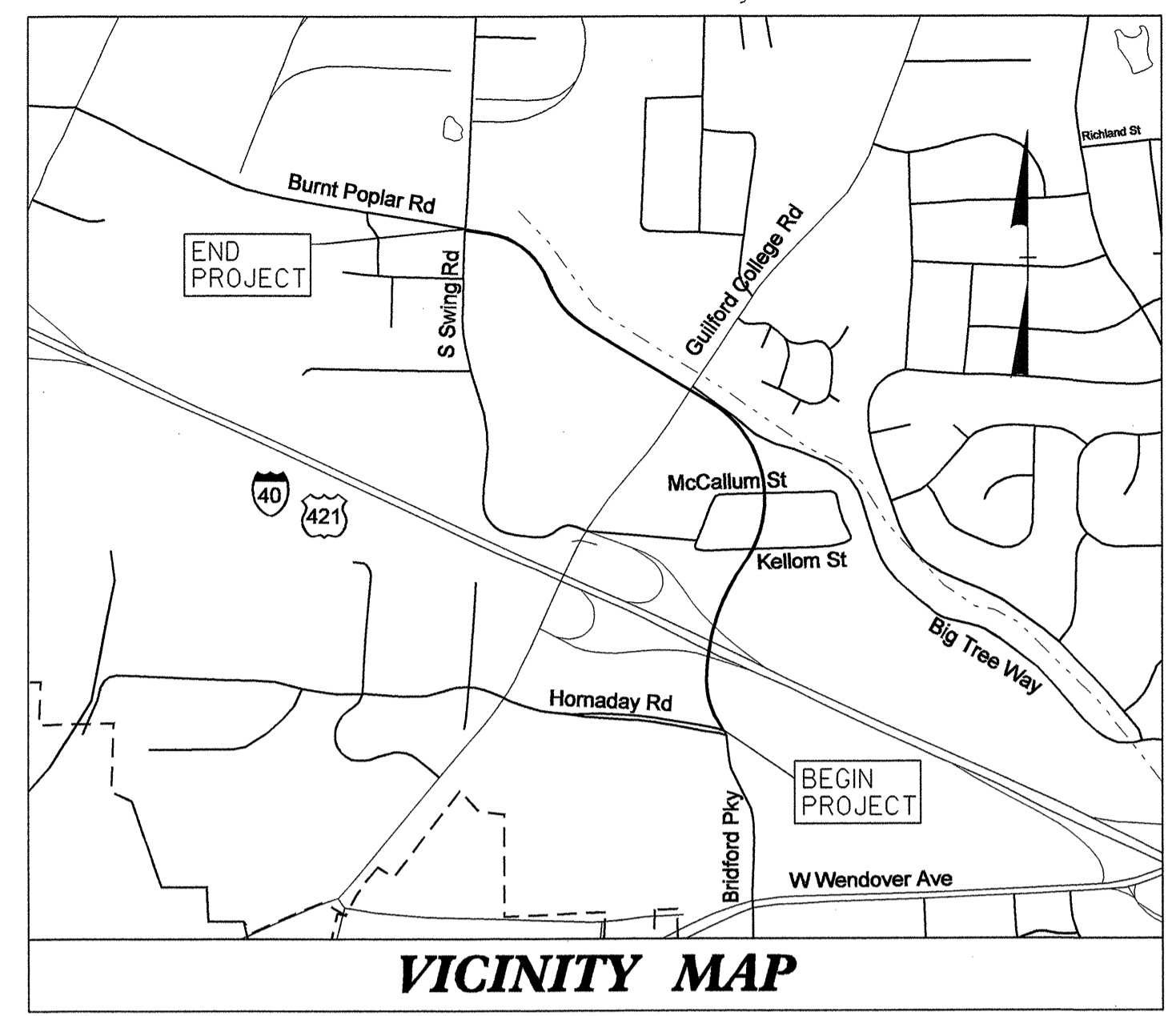
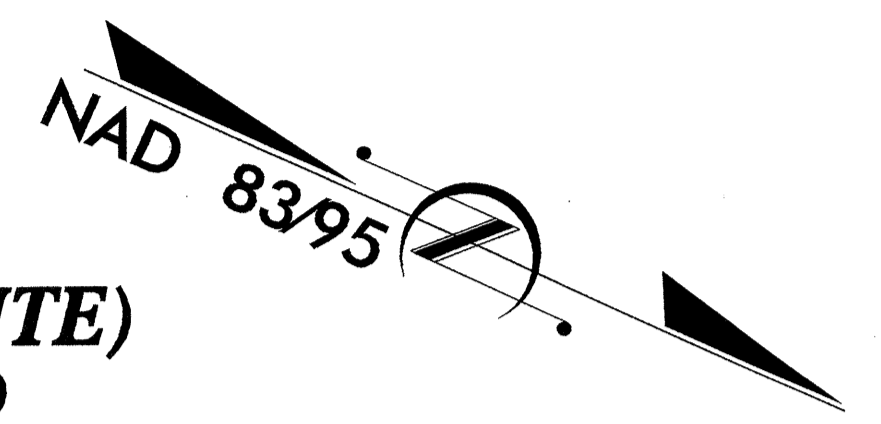
See Sheet 1-A For Index of Sheets
See Sheet 1-B For Conventional Symbols

T.I.P. NO.	SHEET NO.
U-4006	UC-1

STATE OF NORTH CAROLINA
DIVISION OF HIGHWAYS

**UTILITY CONSTRUCTION PLANS
GUILFORD COUNTY**

**LOCATION: GREENSBORO SR 4126 (BRIDFORD PARKWAY, NEW ROUTE)
FROM SR 1541 (WENDOVER AVE.) AT HORNADAY RD. TO
SR 1607 (BURNT POPLAR ROAD) AT SWING ROAD**



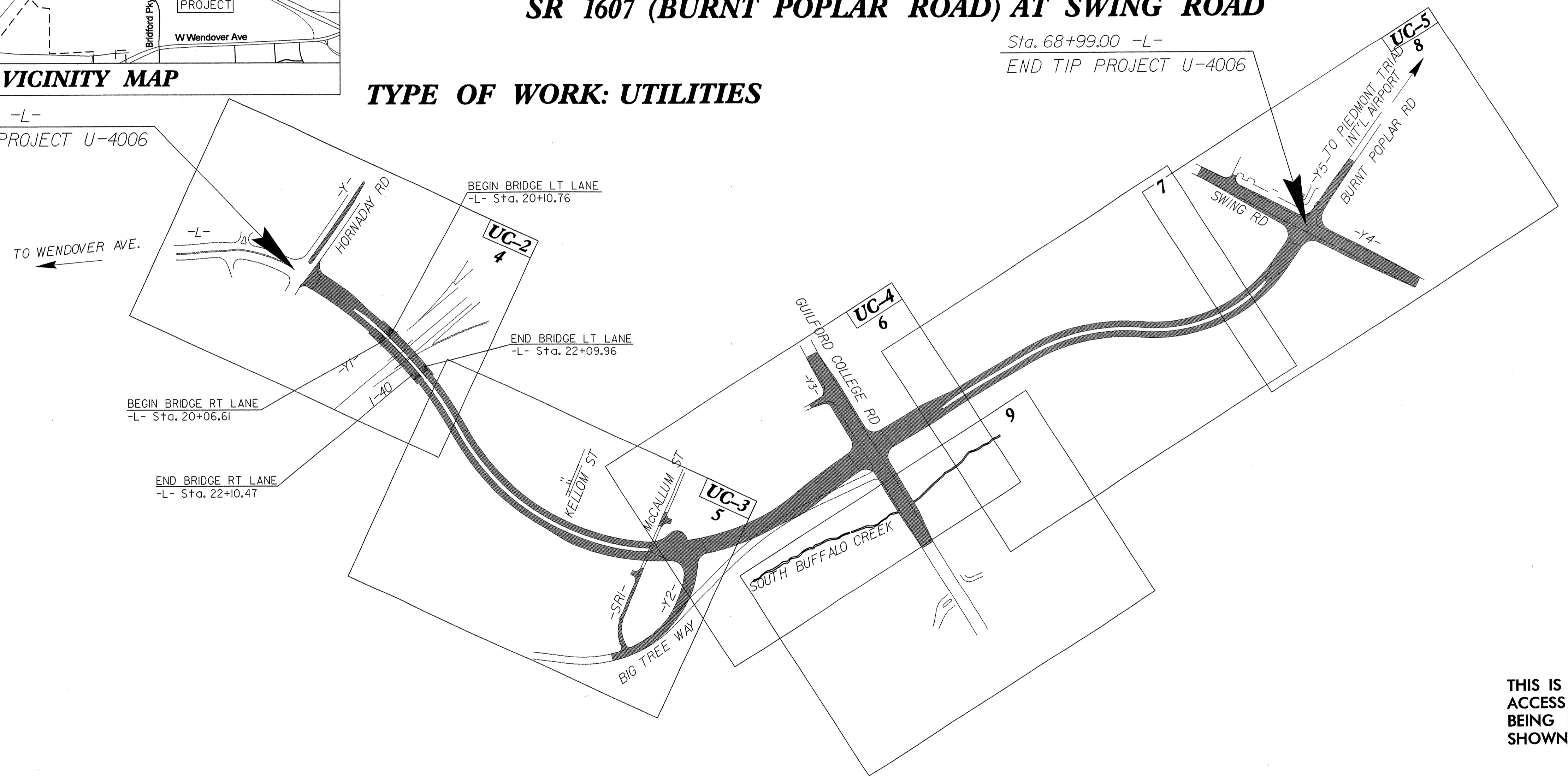
VICINITY MAP

Sta. 68+99.00 -L-
END TIP PROJECT U-4006

TYPE OF WORK: UTILITIES

Sta. 15+00.00 -L-
BEGIN TIP PROJECT U-4006

TIP U-4006

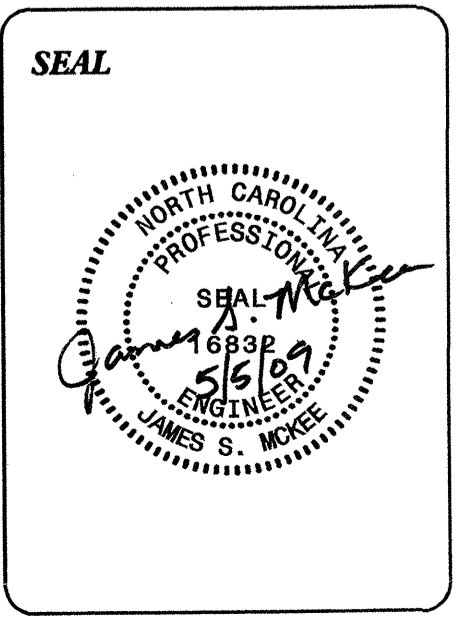


THIS IS A PARTIAL CONTROLLED ACCESS PROJECT WITH ACCESS BEING LIMITED TO POINTS AS SHOWN ON THE PLANS.

INDEX OF SHEETS	
SHEET NO.	DESCRIPTION
UC-1	TITLE SHEET
UC-2 THRU UC-5	UTILITY CONSTRUCTION PLAN SHEETS
UC-6	DETAILS SHEET

WATER AND SEWER OWNERS ON PROJECT

(1) WATER: CITY OF GREENSBORO
(2) SANITARY SEWER: CITY OF GREENSBORO



PREPARED IN THE OFFICE OF:
**DIVISION OF HIGHWAYS
UTILITIES ENGINEERING SECTION**

1591 MAIL SERVICES CENTER
RALEIGH, NC 27699-1591
PHONE (919) 250-4128
FAX (919) 250-4119

Roger Worthington, P.E. UTILITIES SECTION ENGINEER
Steve McKee, P.E. UTILITIES SQUAD LEADER PROJECT ENGINEER
Alonza Yancey UTILITIES PROJECT DESIGNER

05-MAY-2009 09:57
P:\utilities\rdy\ut\proj\4006-utl\uc1_tsh.dgn
\$\$\$\$\$USERNAME\$\$\$\$\$

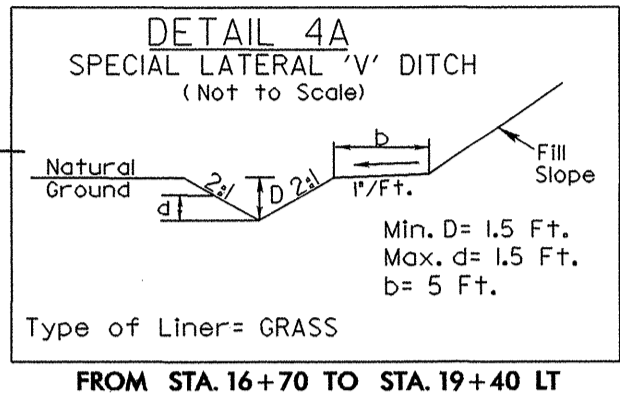
ALL WATER AND SEWER LINES ON THIS PROJECT ARE OWNED BY THE CITY OF GREENSBORO

ALL WATER LINES SHALL BE DUCTILE IRON, PC 350
ALL SEWER LINES SHALL BE DUCTILE IRON, PC 250

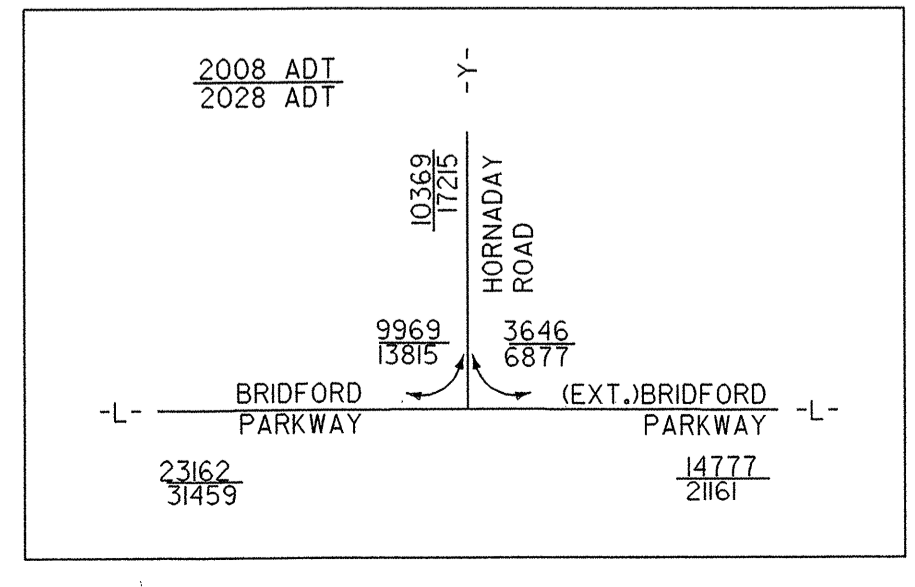
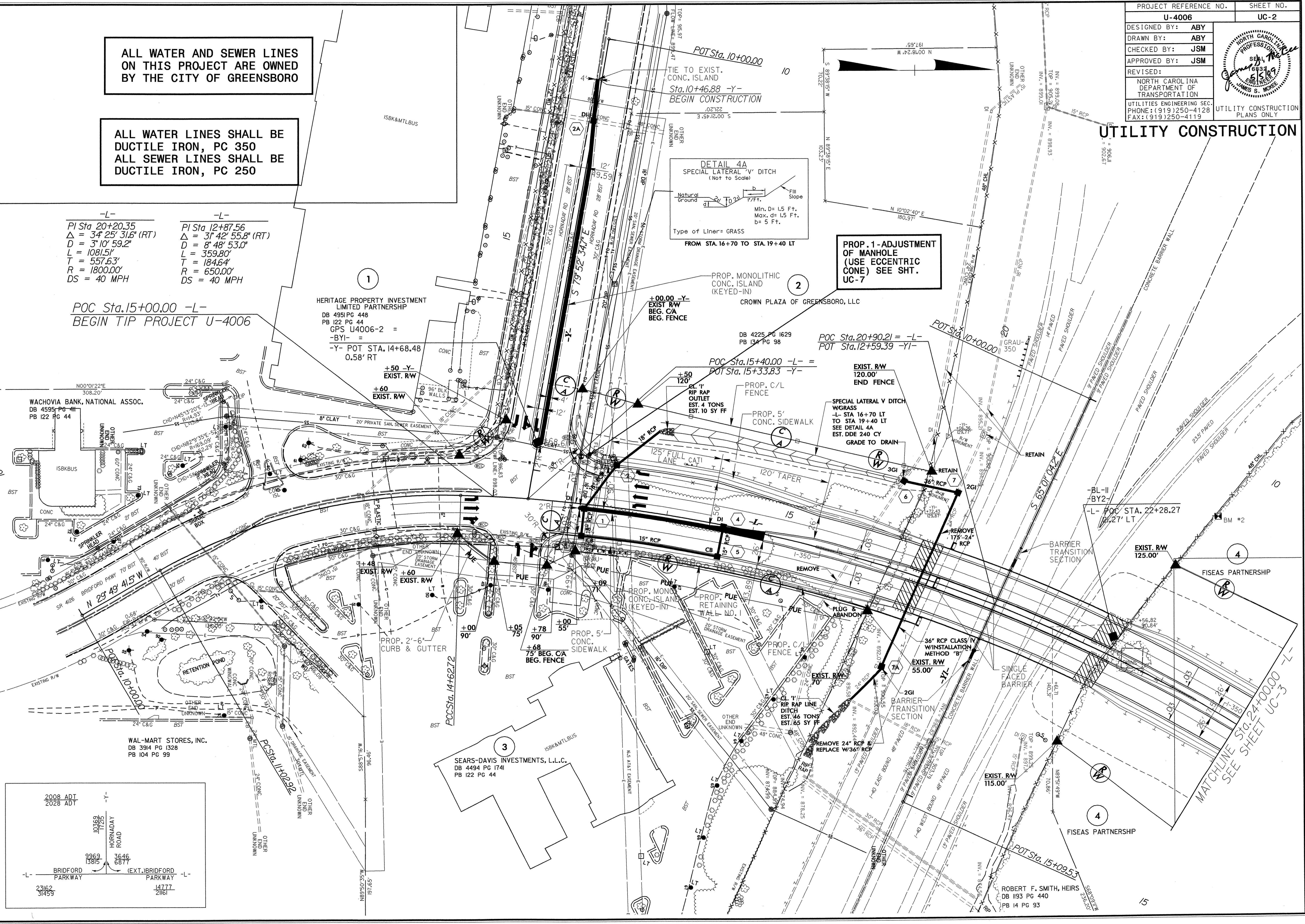
-L-
PI Sta 20+20.35
Δ = 3° 25' 31.6" (RT)
D = 3° 10' 59.2"
L = 1081.5'
T = 557.63'
R = 1800.00'
DS = 40 MPH

-L-
PI Sta 12+87.56
Δ = 3° 42' 55.8" (RT)
D = 8° 48' 53.0"
L = 359.80'
T = 184.64'
R = 650.00'
DS = 40 MPH

POC Sta. 15+00.00 -L-
BEGIN TIP PROJECT U-4006

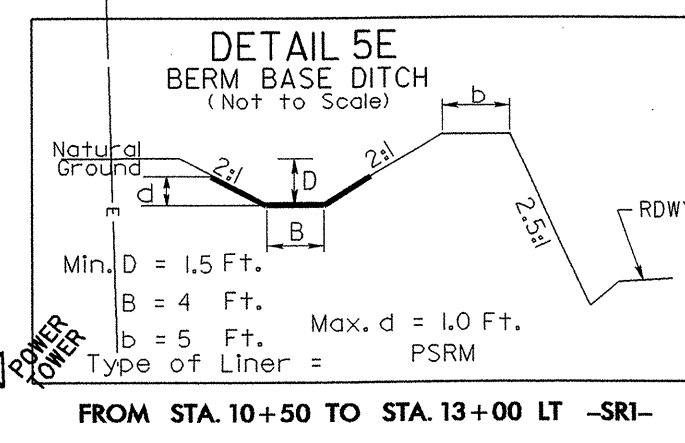
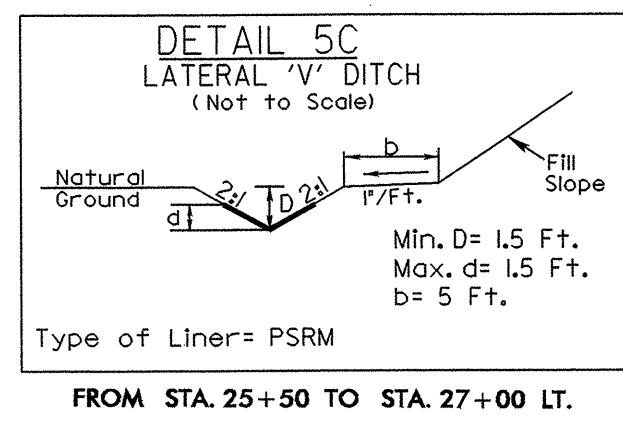
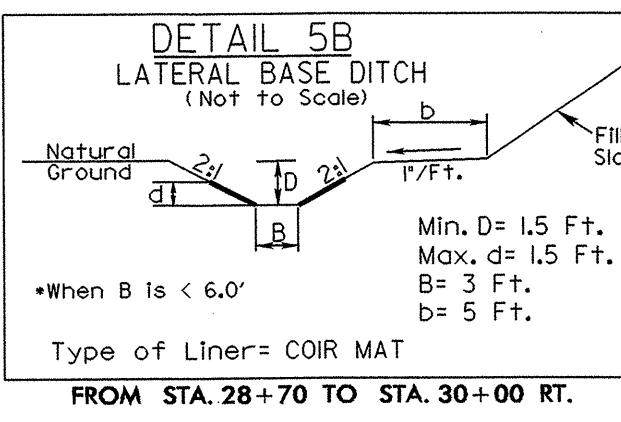
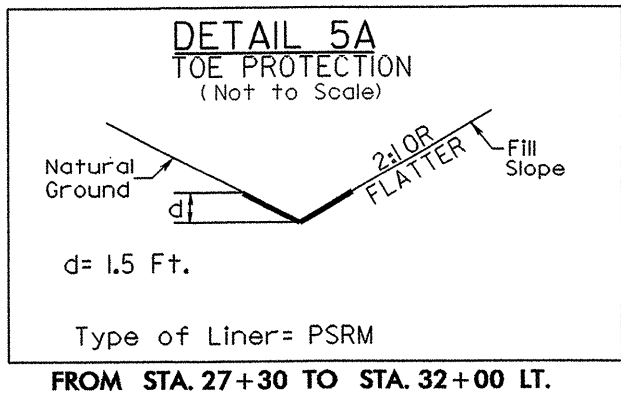
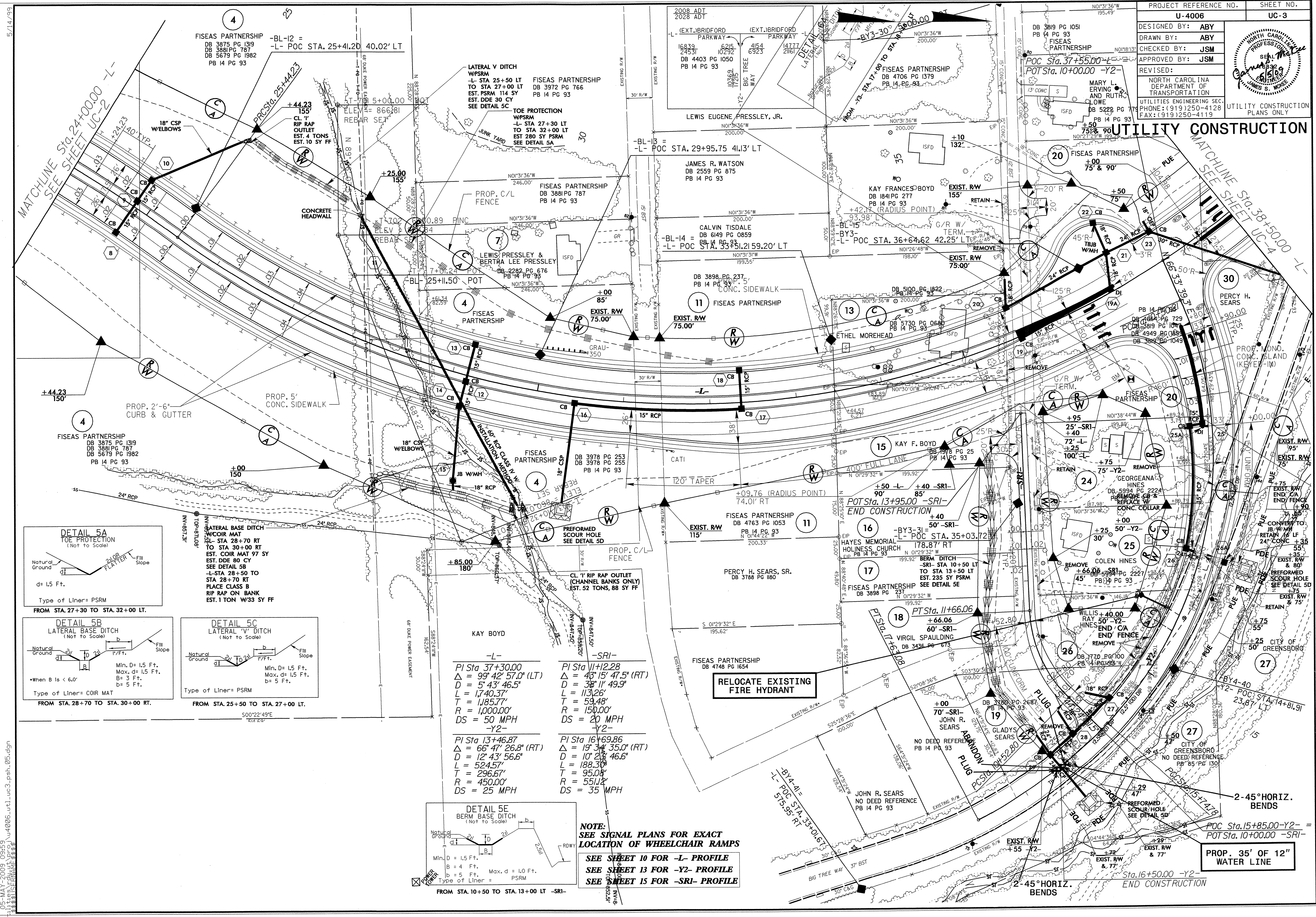
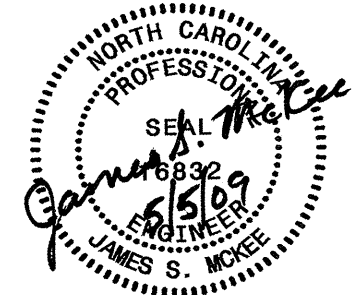


PROP. 1-ADJUSTMENT OF MANHOLE (USE ECCENTRIC CONE) SEE SHT. UC-7



MATCHLINE STG. 24+00.00
SEE SHEET UC-3

05-MAY-2009 09:58 \\utilities\csh\ut\proj\U4006.ut1.uc2.psh_04.dgn



Station	Profile	Delta	Diameter	Length	Tangent	Radius	Design Speed
PI Sta 37+30.00	-L-	99° 42' 57.0" (LT)	5' 43" 46.5"	1,740.37'	1,185.77'	1,000.00'	50 MPH
PI Sta 11+12.28	-SRI-	43° 15' 47.5" (RT)	38" 11" 49.9"	113.26'	150.00'	150.00'	35 MPH
PI Sta 13+46.87	-L-	66° 47' 26.8" (RT)	12' 43" 56.6"	524.57'	296.67'	450.00'	25 MPH
PI Sta 16+69.86	-SRI-	19° 34' 35.0" (RT)	10' 23" 46.6"	188.30'	95.00'	551.18'	35 MPH

NOTE:
 SEE SIGNAL PLANS FOR EXACT LOCATION OF WHEELCHAIR RAMPS
 SEE SHEET 10 FOR -L- PROFILE
 SEE SHEET 13 FOR -Y2- PROFILE
 SEE SHEET 15 FOR -SRI- PROFILE

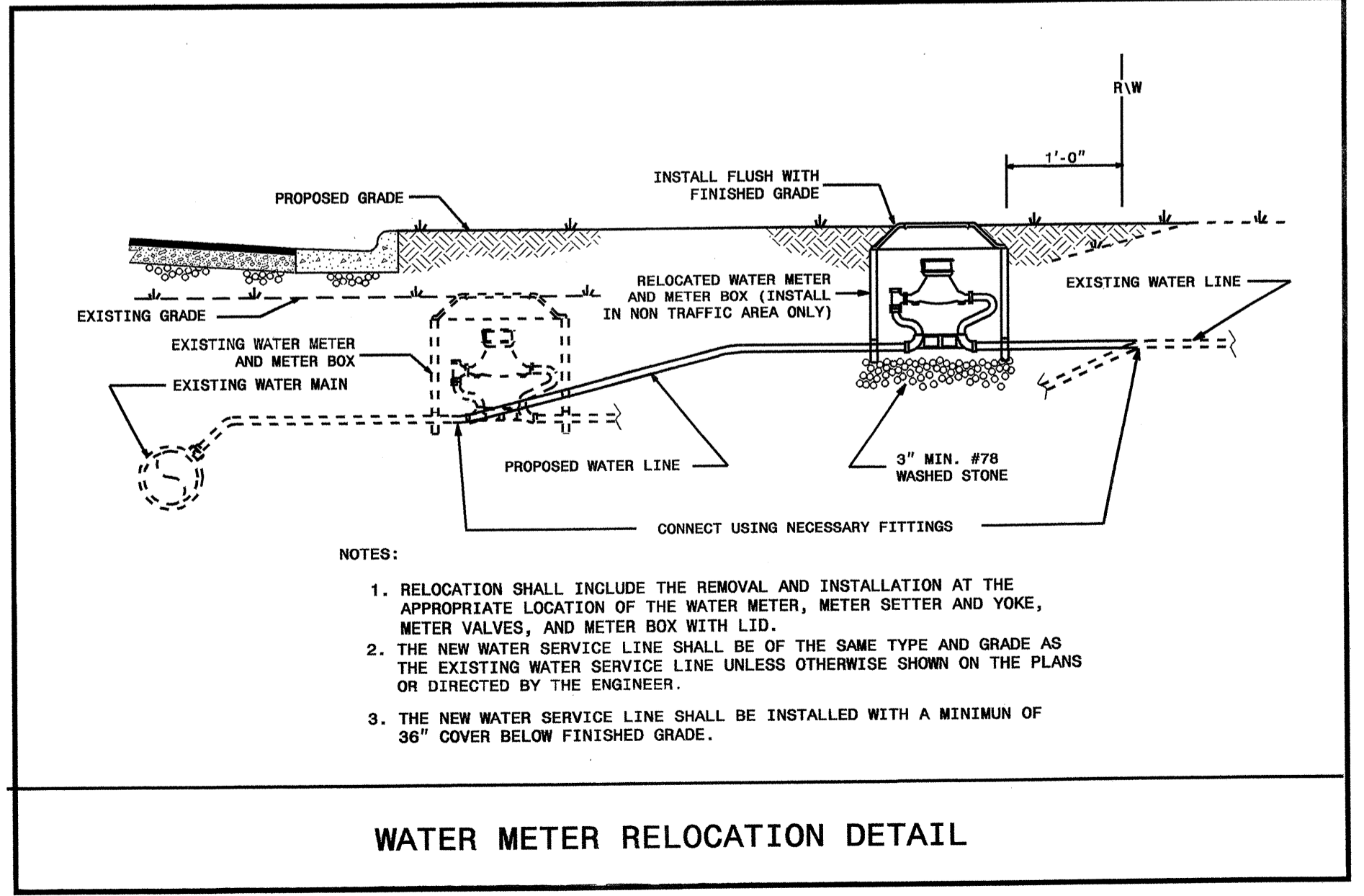
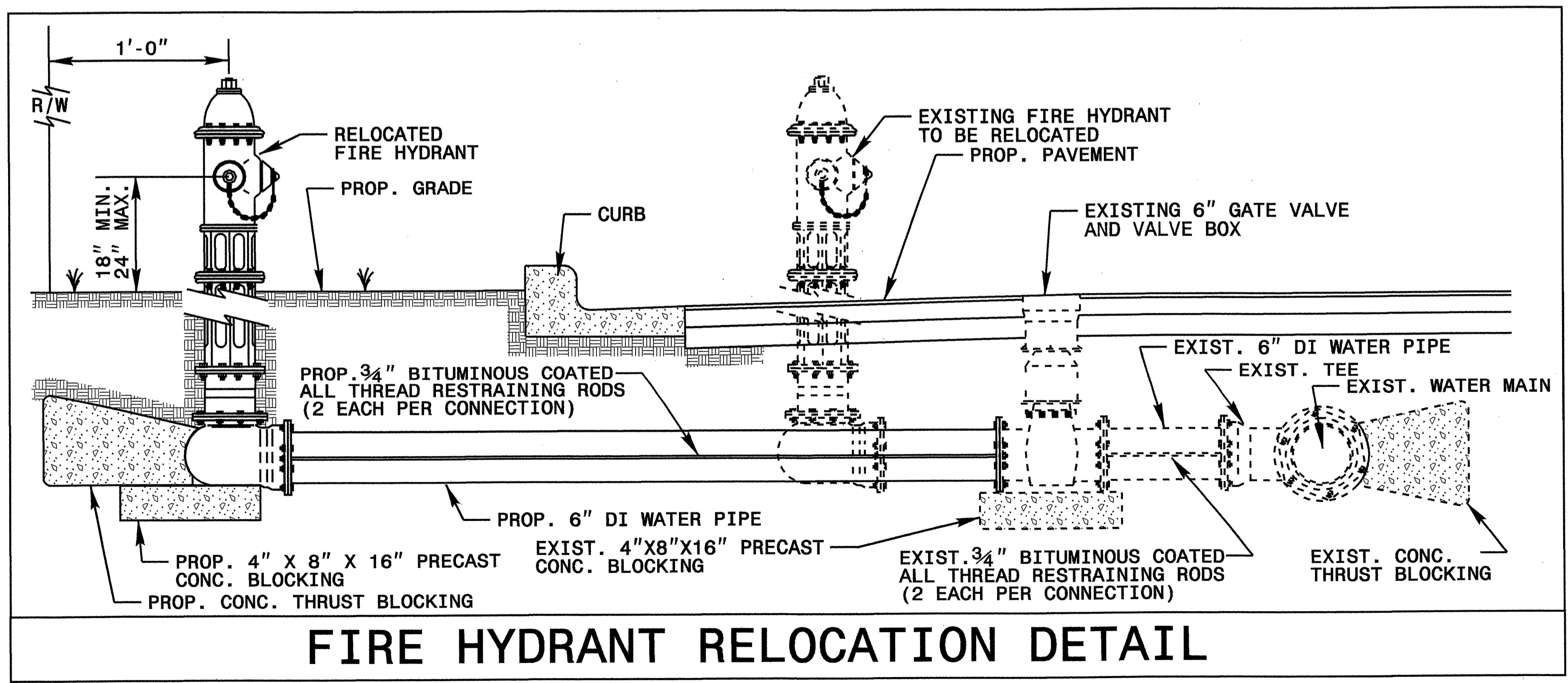
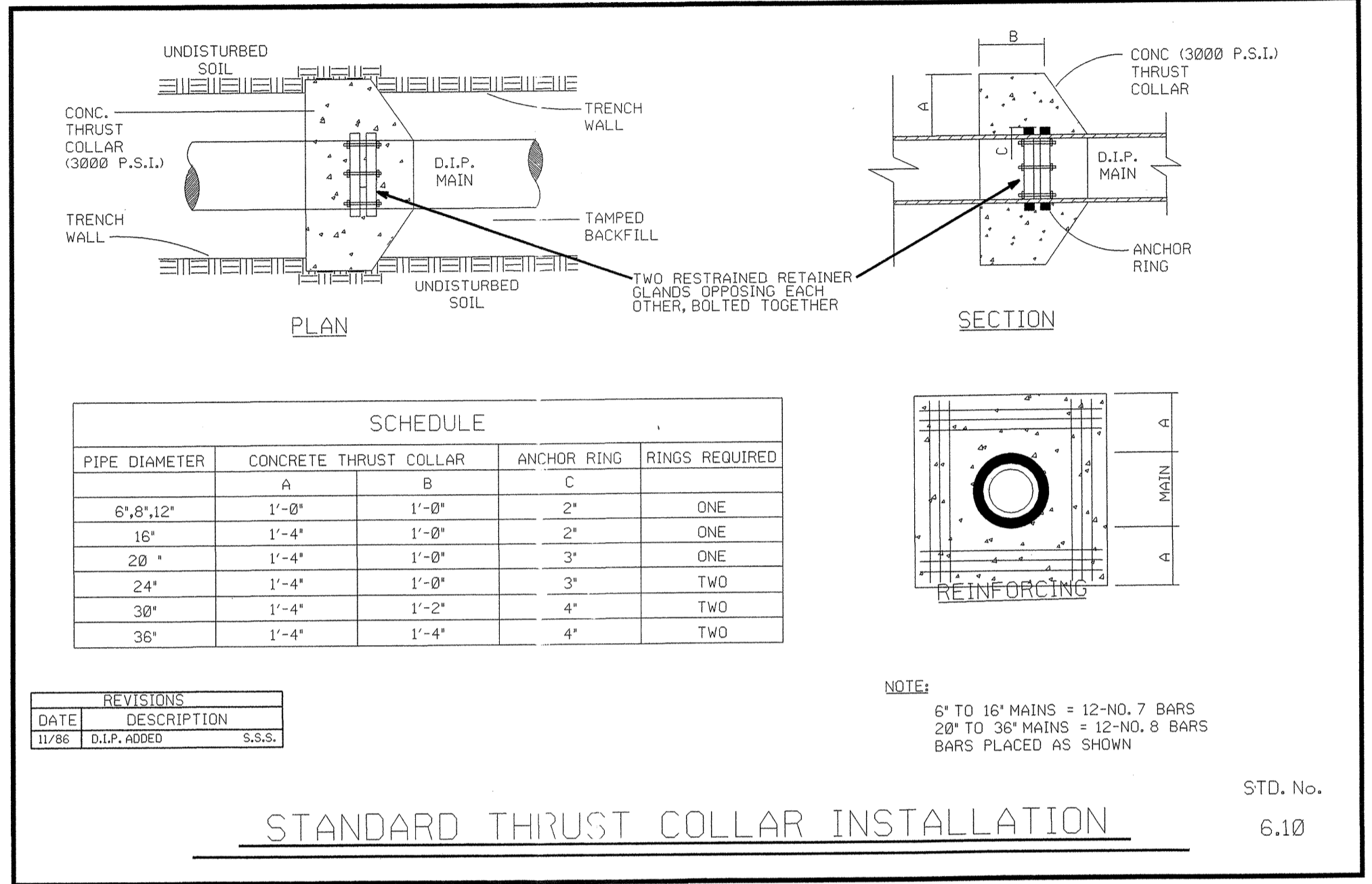
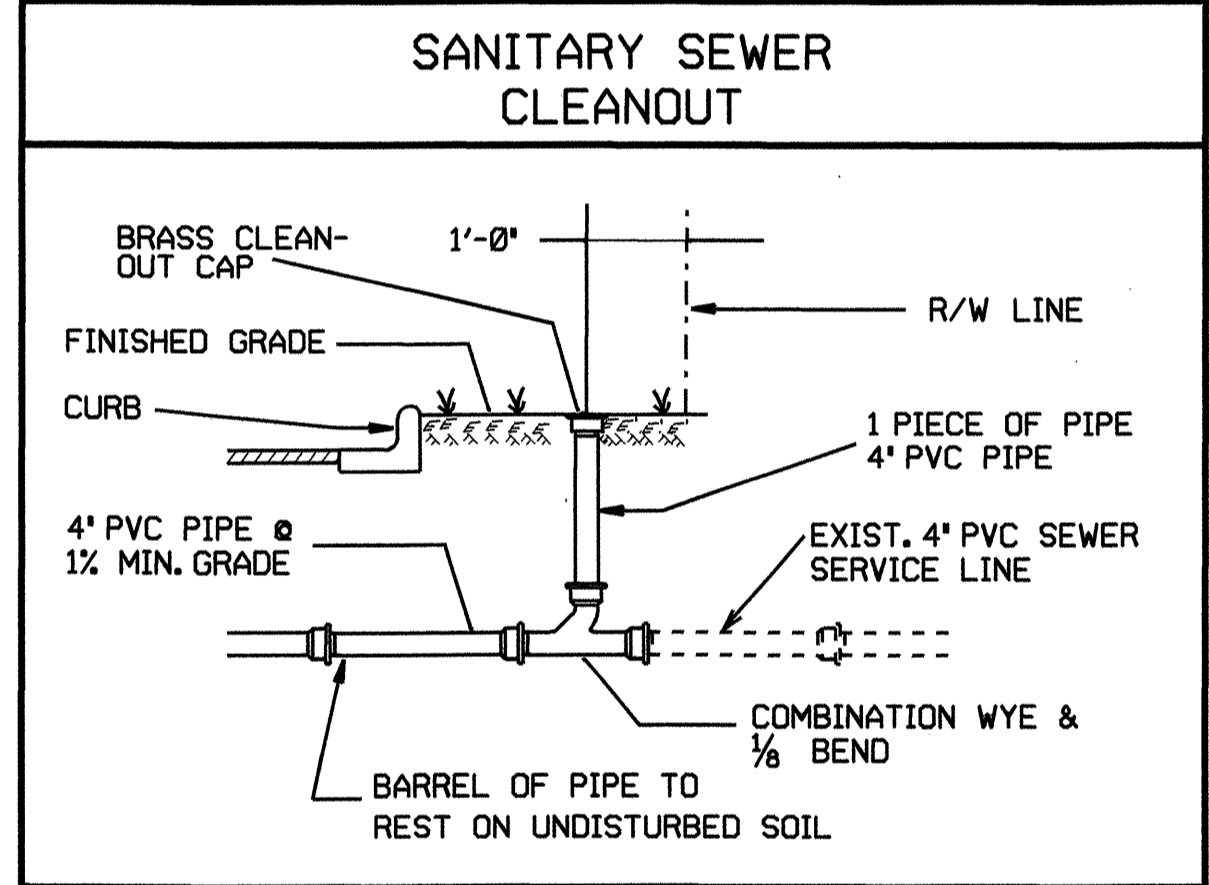
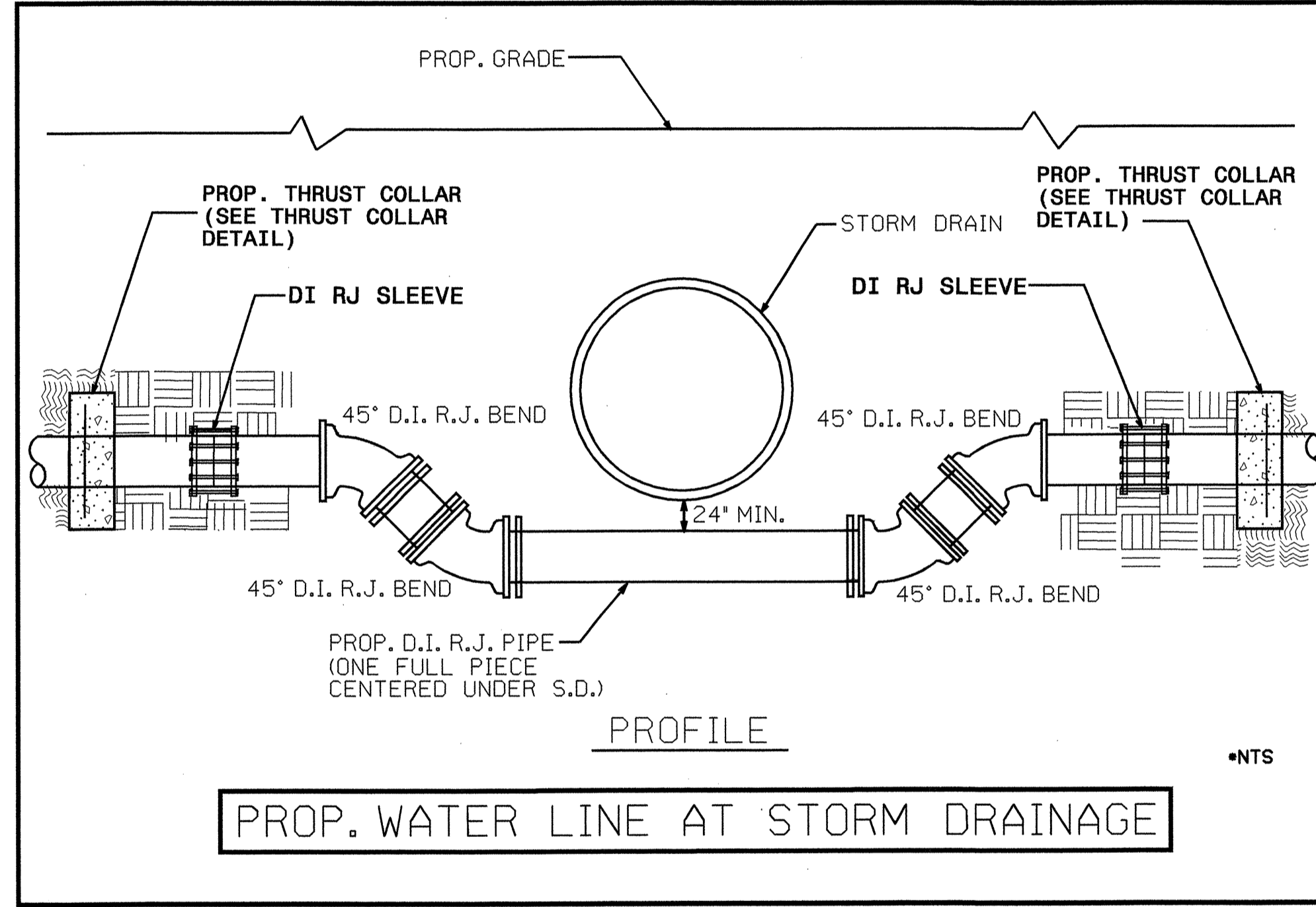
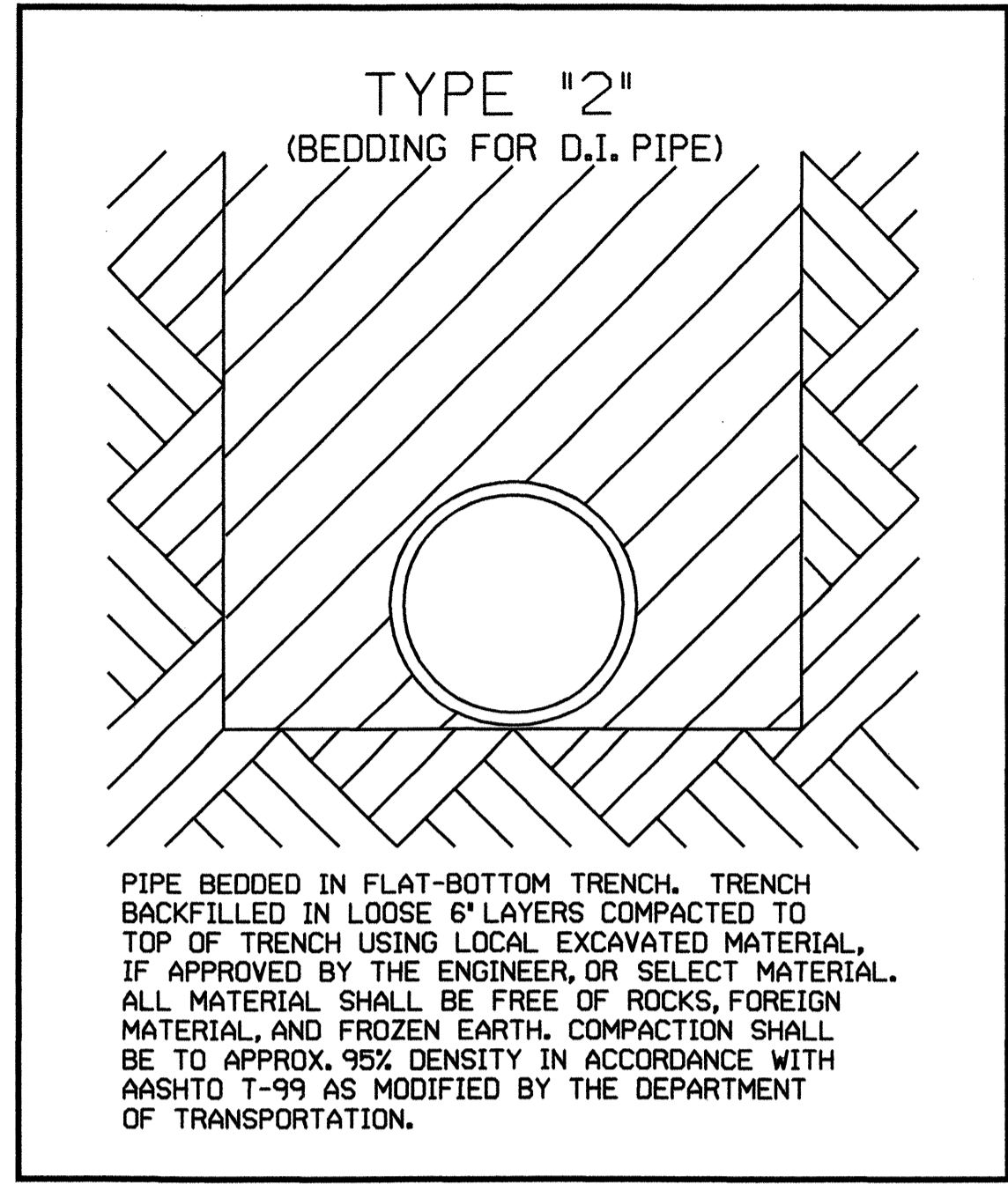
05-MAY-2009 09:59
 C:\Users\jmoore\Documents\4006_uc3_psh_05.dgn

5/14/99

UTILITY CONSTRUCTION

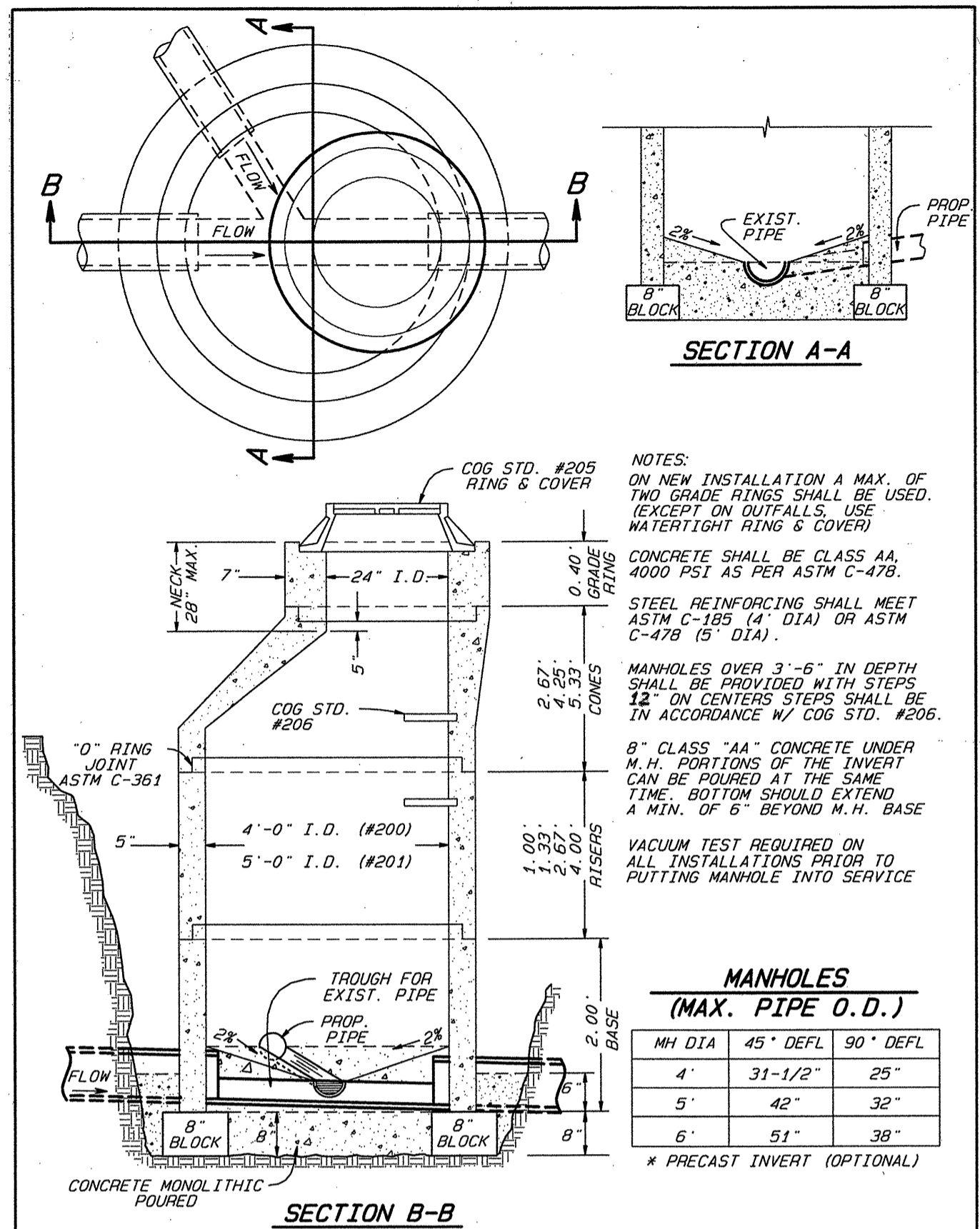
MAXIMUM TRENCH WIDTH
AT TOP OF PIPE

NOMINAL PIPE SIZE (INCHES)	TRENCH WIDTH (INCHES)	NOMINAL PIPE SIZE (INCHES)	TRENCH WIDTH (INCHES)
4	28	20	44
6	30	24	48
8	32	30	54
10	34	36	60
12	36	42	66
14	38	48	72
16	40	54	78
18	42		



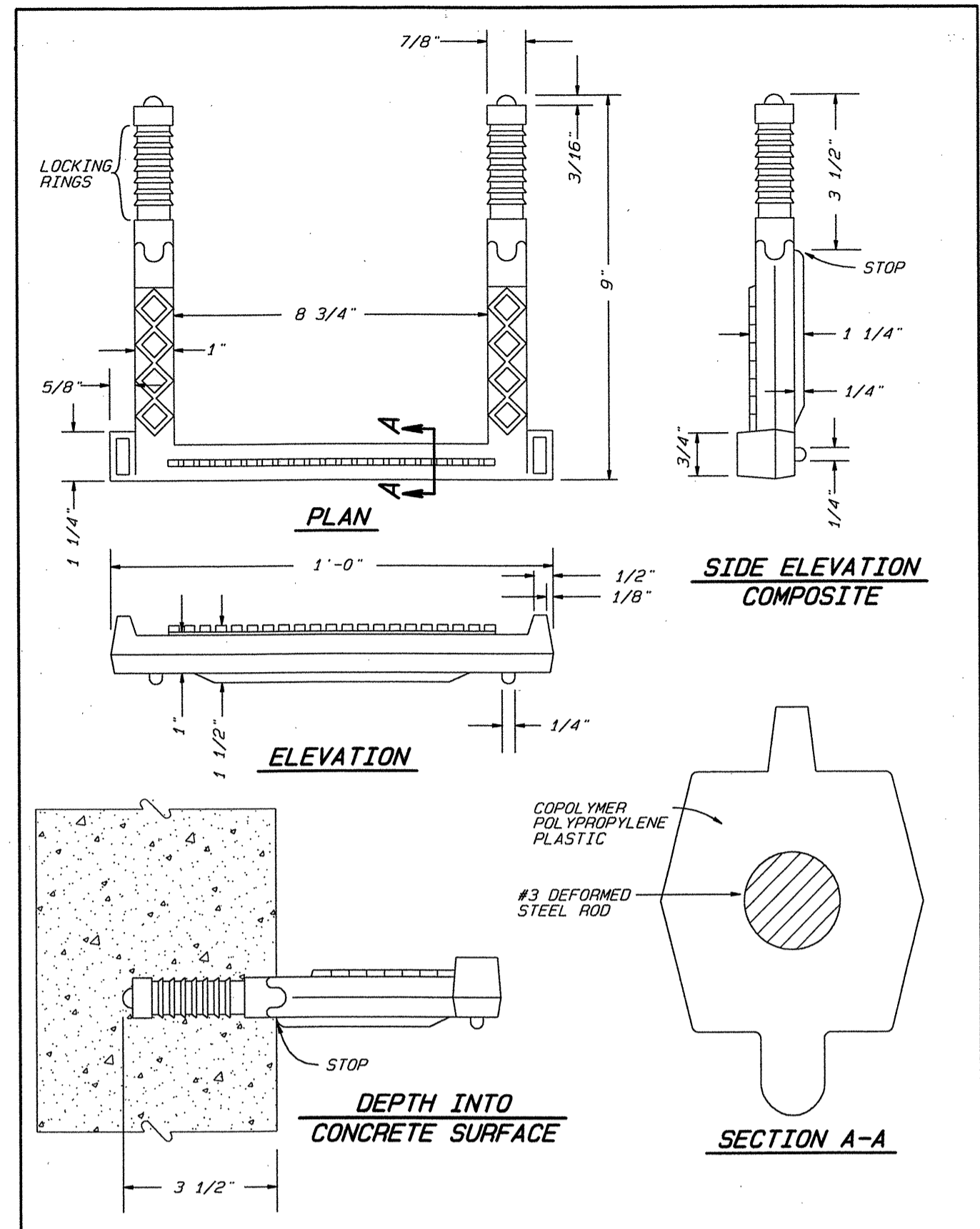
05-MAY-2009 10:01
rt:\utilities\rd\4006\uc5\psh_08.dgn
JSM

5/14/99



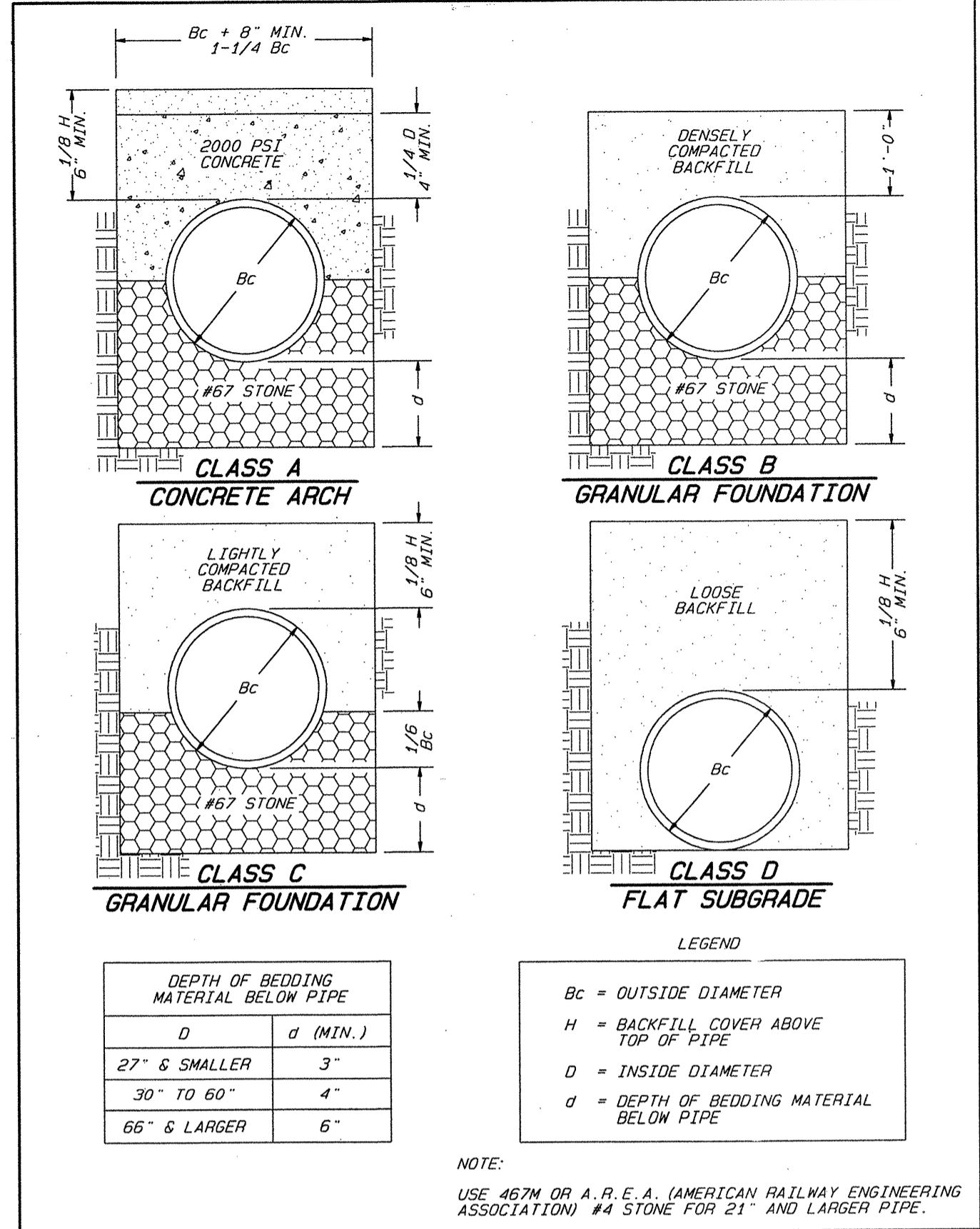
CITY OF GREENSBORO

STANDARD 4' I.D. & 5' I.D. ECCENTRIC PRECAST BOTTOMLESS MANHOLE OVER EXISTING SANITARY SEWER (DOGHOUSE MANHOLE)	STD. NO. 200A	REV. REC-05 201A
-----------------------------------------------------------------------------------------------------------------	---------------	------------------



CITY OF GREENSBORO

STANDARD MANHOLE STEP FOR PRECAST CONCRETE MANHOLE	STD. NO. 206	REV.
----------------------------------------------------	--------------	------



CITY OF GREENSBORO

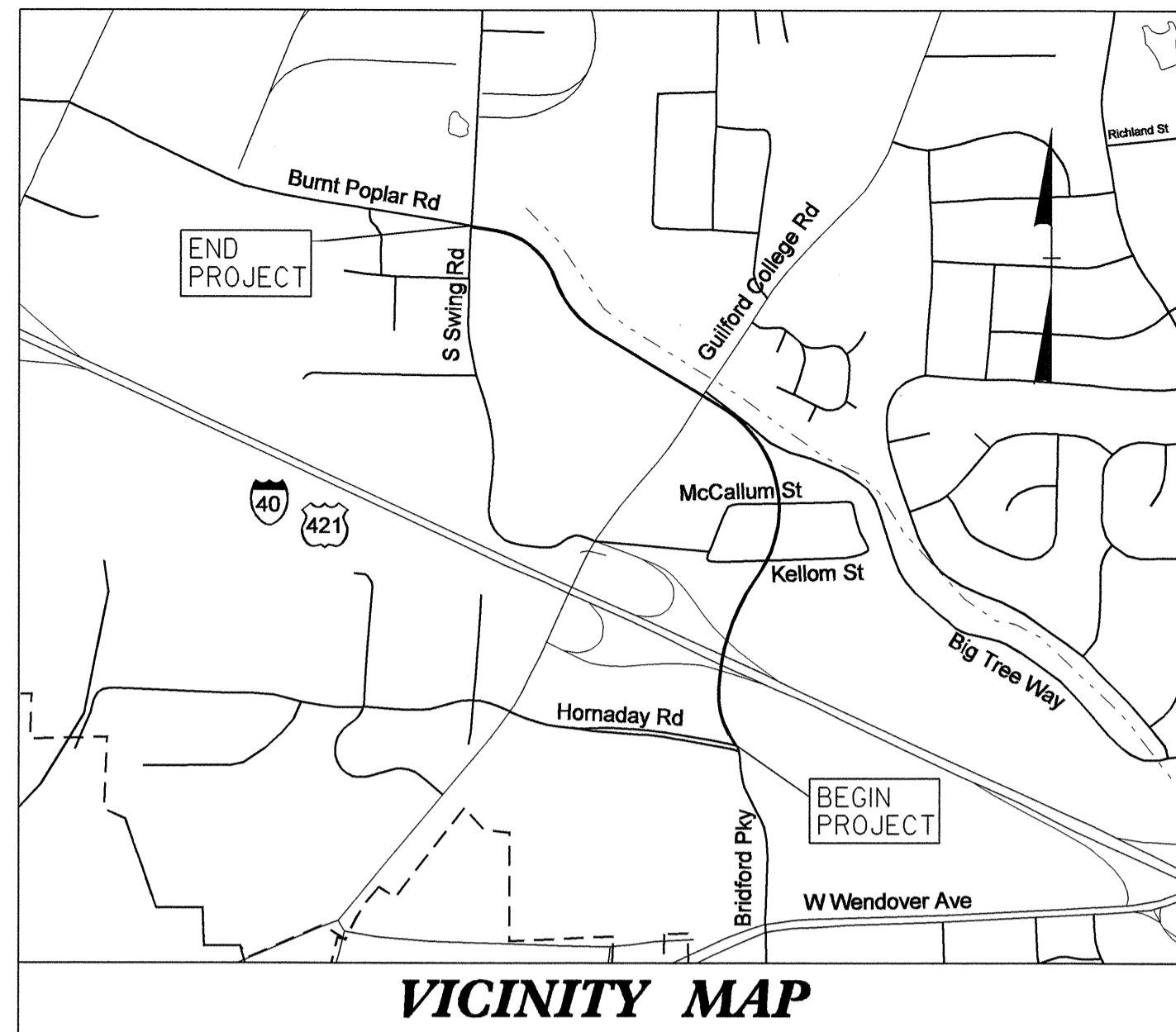
STANDARD TRENCH BEDDINGS FOR CIRCULAR PIPE	STD. NO. 207	REV. 03-97
--------------------------------------------	--------------	------------

PROJECT REFERENCE NO. U-4006	SHEET NO. UC-7
DESIGNED BY: ABY	
DRAWN BY: ABY	
CHECKED BY: JSM	
APPROVED BY: JSM	
REVISED:	
NORTH CAROLINA DEPARTMENT OF TRANSPORTATION UTILITIES ENGINEERING SEC. PHONE: (919) 250-4128 FAX: (919) 250-4119	
UTILITY CONSTRUCTION PLANS ONLY	

UTILITY CONSTRUCTION

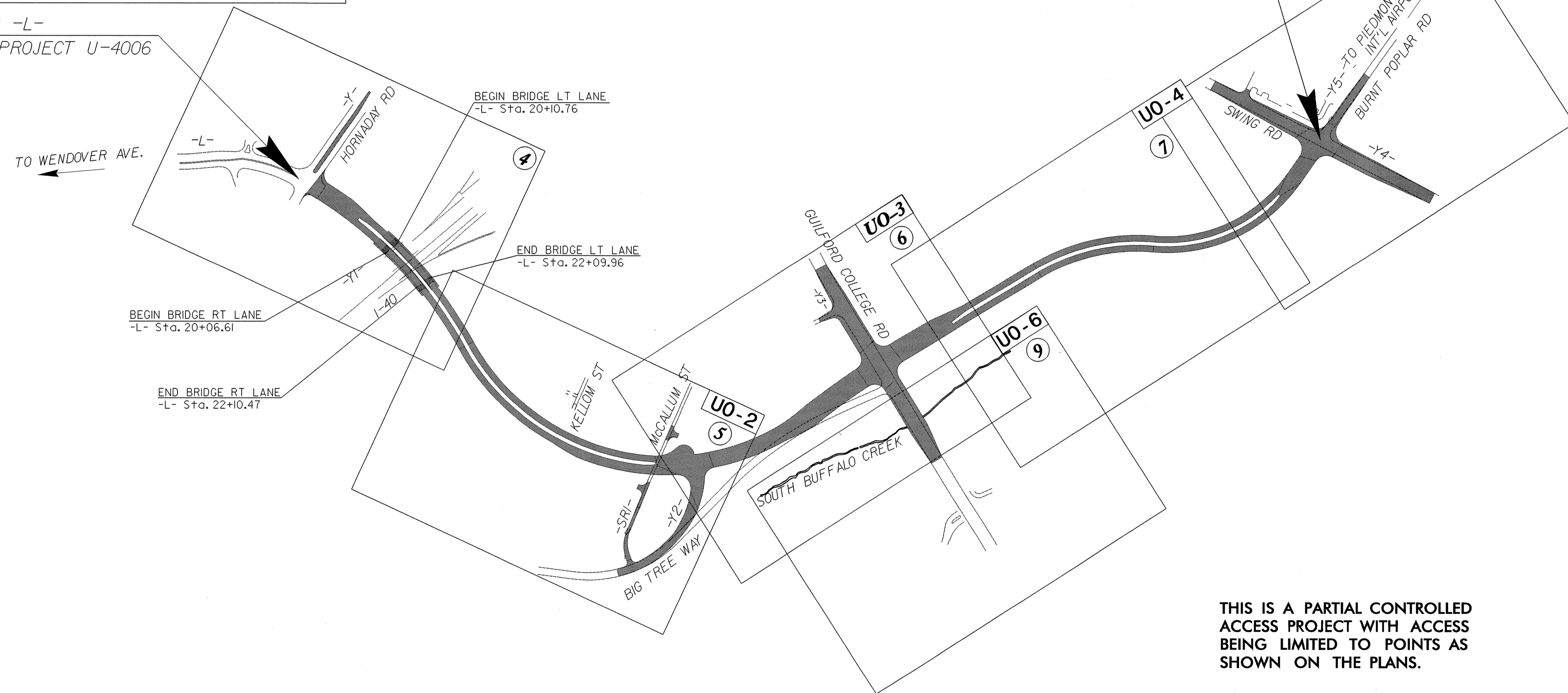
30-APR-2009 14:28
 \\utl\it\es\fr\ave\pro\44006.utl.uc5_psh_08.dgn
 \$\$\$USERNAME\$\$\$

See Sheet 1-A For Index of Sheets
See Sheet 1-B For Conventional Symbols



VICINITY MAP

Sta. 15+00.00 -L-
BEGIN TIP PROJECT U-4006



THIS IS A PARTIAL CONTROLLED ACCESS PROJECT WITH ACCESS BEING LIMITED TO POINTS AS SHOWN ON THE PLANS.

STATE OF NORTH CAROLINA
DIVISION OF HIGHWAYS

**UTILITIES BY OTHERS PLANS
GUILFORD COUNTY**

**LOCATION: GREENSBORO SR 4126 (BRIDFORD PARKWAY, NEW ROUTE)
FROM SR 1541 (WENDOVER AVE.) AT HORNADAY RD. TO
SR 1607 (BURNT POPLAR ROAD) AT SWING ROAD**

TYPE OF WORK: UTILITIES

Sta. 68+99.00 -L-
END TIP PROJECT U-4006

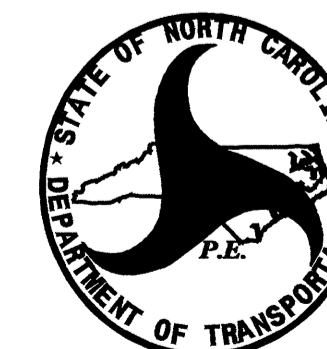
TIP U-4006

INDEX OF SHEETS

<u>SHEET NO.</u>	<u>DESCRIPTION</u>
UO-1	TITLE SHEET
UO-2 THRU UO-6	UTILITY BY OTHERS PLAN SHEETS

UTILITY OWNERS ON PROJECT

- (1) DUKE ENERGY CORPORATION
- (2) AT&T (LONG DISTANCE)
- (3) AT&T
- (4) LEVEL 3
- (5) PIEDMONT NATURAL GAS COMPANY
- (6) TIME WARNER



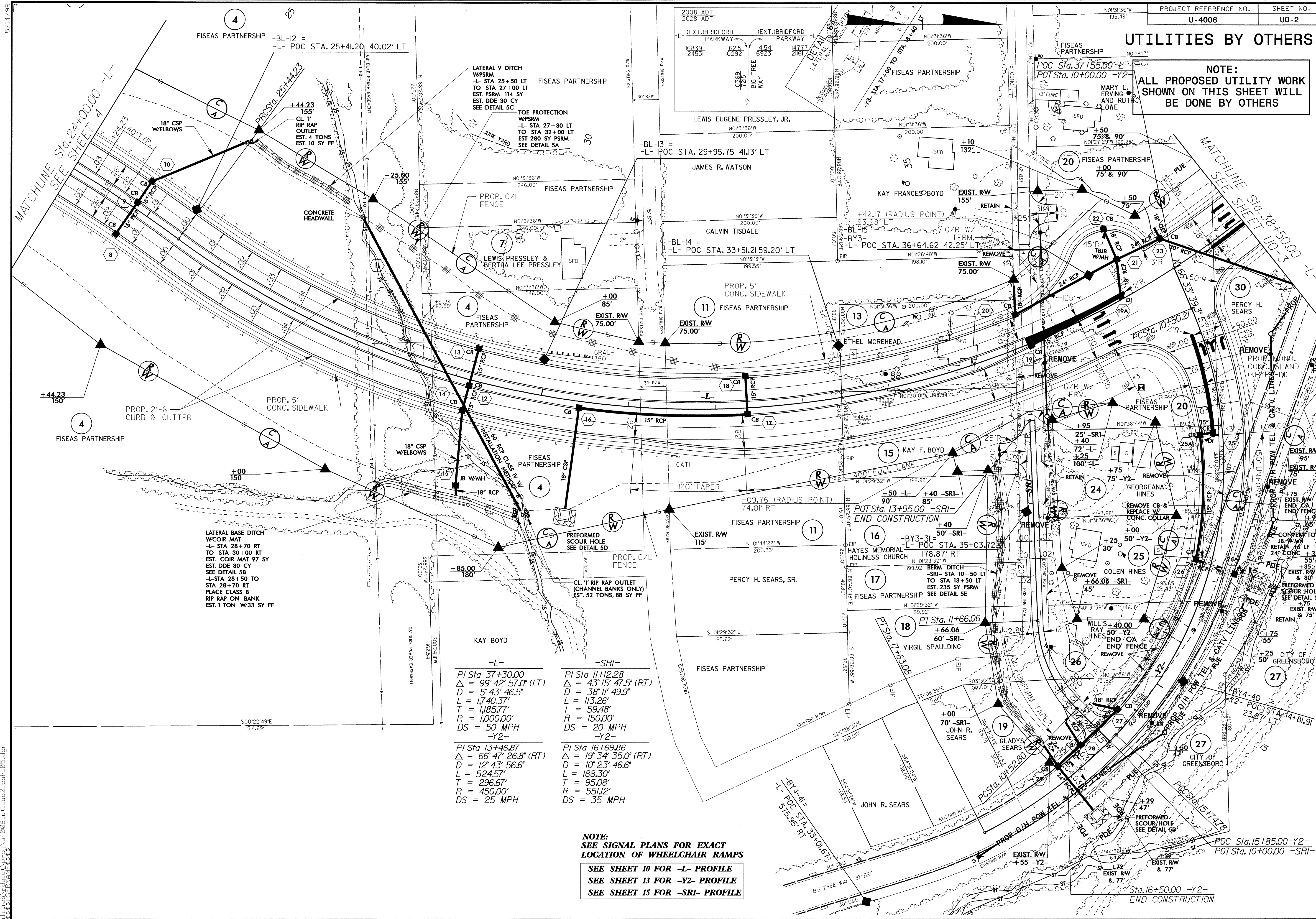
PREPARED IN THE OFFICE OF:
**DIVISION OF HIGHWAYS
UTILITIES ENGINEERING
SECTION**

1591 MAIL SERVICES CENTER
RALEIGH NC 27699-1591
PHONE (919) 250-4128
FAX (919) 250-4119

Roger Worthington, P.E. UTILITIES SECTION ENGINEER
Steve McKee, P.E. UTILITIES SQUAD LEADER PROJECT ENGINEER
Alonza Yancey UTILITIES PROJECT DESIGNER

UTILITIES BY OTHERS

NOTE:
ALL PROPOSED UTILITY WORK
SHOWN ON THIS SHEET WILL
BE DONE BY OTHERS



LATERAL BASE DITCH
WCOIR MAT
-L- STA 28+70 RT
TO STA 30+00 RT
EST. COIR MAT 97 SY
EST. DDE 90 CY
SEE DETAIL 5B
-L- STA 28+50 TO
STA 28+70 RT
PLACE CLASS B
RIP RAP ON BANK
EST. 1 TON W/33 SY FF

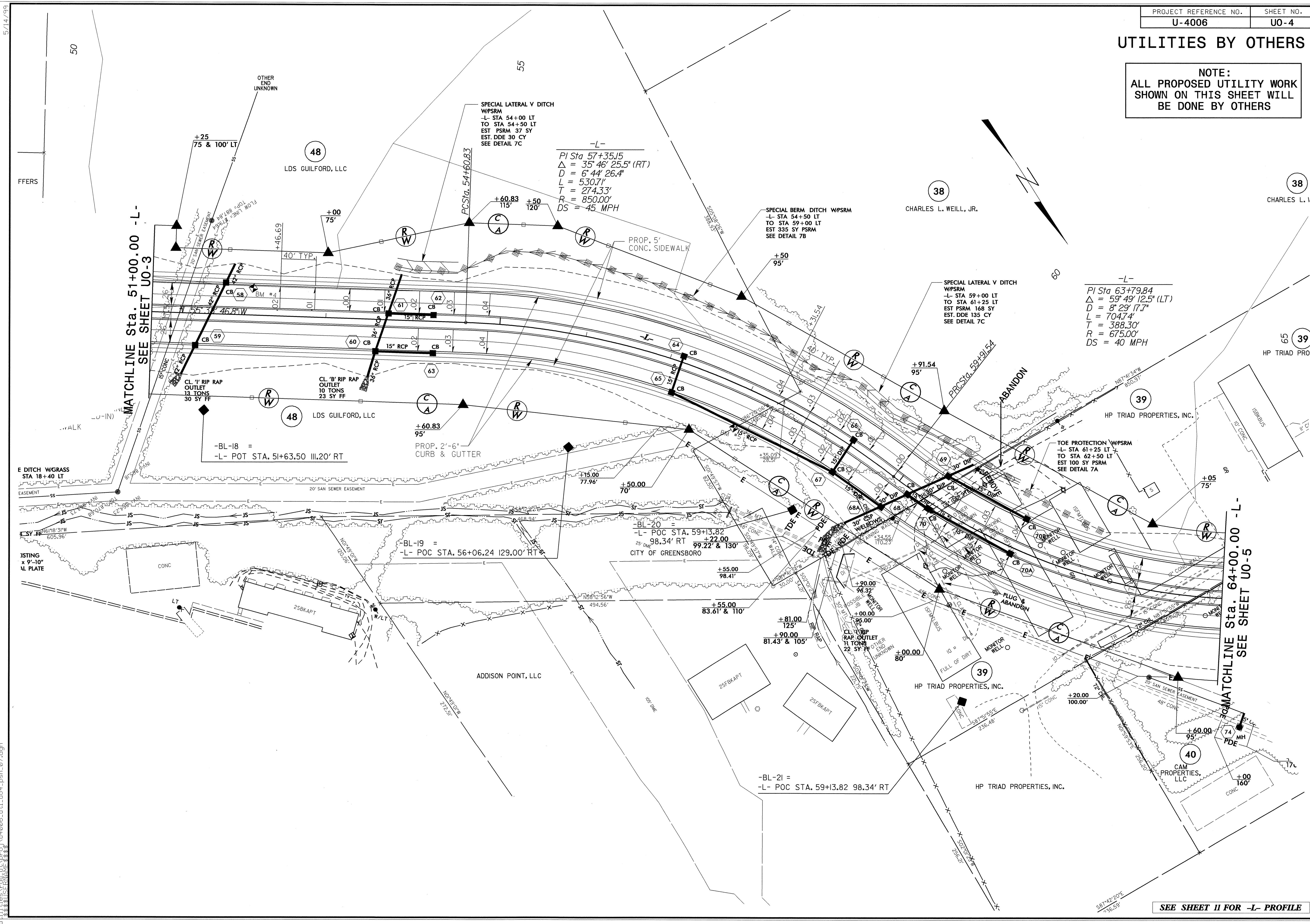
-L-	-SRI-
PI Sta 37+30.00	PI Sta 11+12.28
$\Delta = 93^\circ 42' 57.0"$ (LT)	$\Delta = 43^\circ 15' 47.5"$ (RT)
D = 5' 43' 46.5"	D = 38' 11' 49.9"
L = 1740.37'	L = 113.26'
T = 1185.77'	T = 59.48'
R = 1,000.00'	R = 150.00'
DS = 50 MPH	DS = 20 MPH
-Y2-	-Y2-
PI Sta 13+46.87	PI Sta 16+69.86
$\Delta = 66^\circ 47' 26.8"$ (RT)	$\Delta = 19^\circ 34' 35.0"$ (RT)
D = 12' 43' 56.6"	D = 10' 23' 46.6"
L = 524.57'	L = 188.30'
T = 296.67'	T = 95.08'
R = 450.00'	R = 551.12'
DS = 25 MPH	DS = 35 MPH

NOTE:
SEE SIGNAL PLANS FOR EXACT
LOCATION OF WHEELCHAIR RAMPS
SEE SHEET 10 FOR -L- PROFILE
SEE SHEET 13 FOR -Y2- PROFILE
SEE SHEET 15 FOR -SRI- PROFILE

05-MAY-2009 12:56
I:\projects\4006\proj\4006.uo2_psh_05.dgn

UTILITIES BY OTHERS

NOTE:
ALL PROPOSED UTILITY WORK
SHOWN ON THIS SHEET WILL
BE DONE BY OTHERS



SPECIAL LATERAL V DITCH
WPSRM
-L- STA 54+00 LT
TO STA 54+50 LT
EST PSRM 37 SY
EST. DDE 30' CY
SEE DETAIL 7C

-L-
PI Sta 57+35.15
 $\Delta = 35^\circ 46' 25.5" (RT)$
 $D = 6' 44" 26.4"$
 $L = 530.71'$
 $T = 274.33'$
 $R = 850.00'$
 $DS = 45 MPH$

SPECIAL LATERAL V DITCH
WPSRM
-L- STA 59+00 LT
TO STA 61+25 LT
EST PSRM 168 SY
EST. DDE 135 CY
SEE DETAIL 7C

-L-
PI Sta 63+79.84
 $\Delta = 59^\circ 49' 12.5" (LT)$
 $D = 8' 29' 17.7"$
 $L = 704.74'$
 $T = 388.30'$
 $R = 675.00'$
 $DS = 40 MPH$

MATCHLINE Sta. 51+00.00 -L-
SEE SHEET UO-3

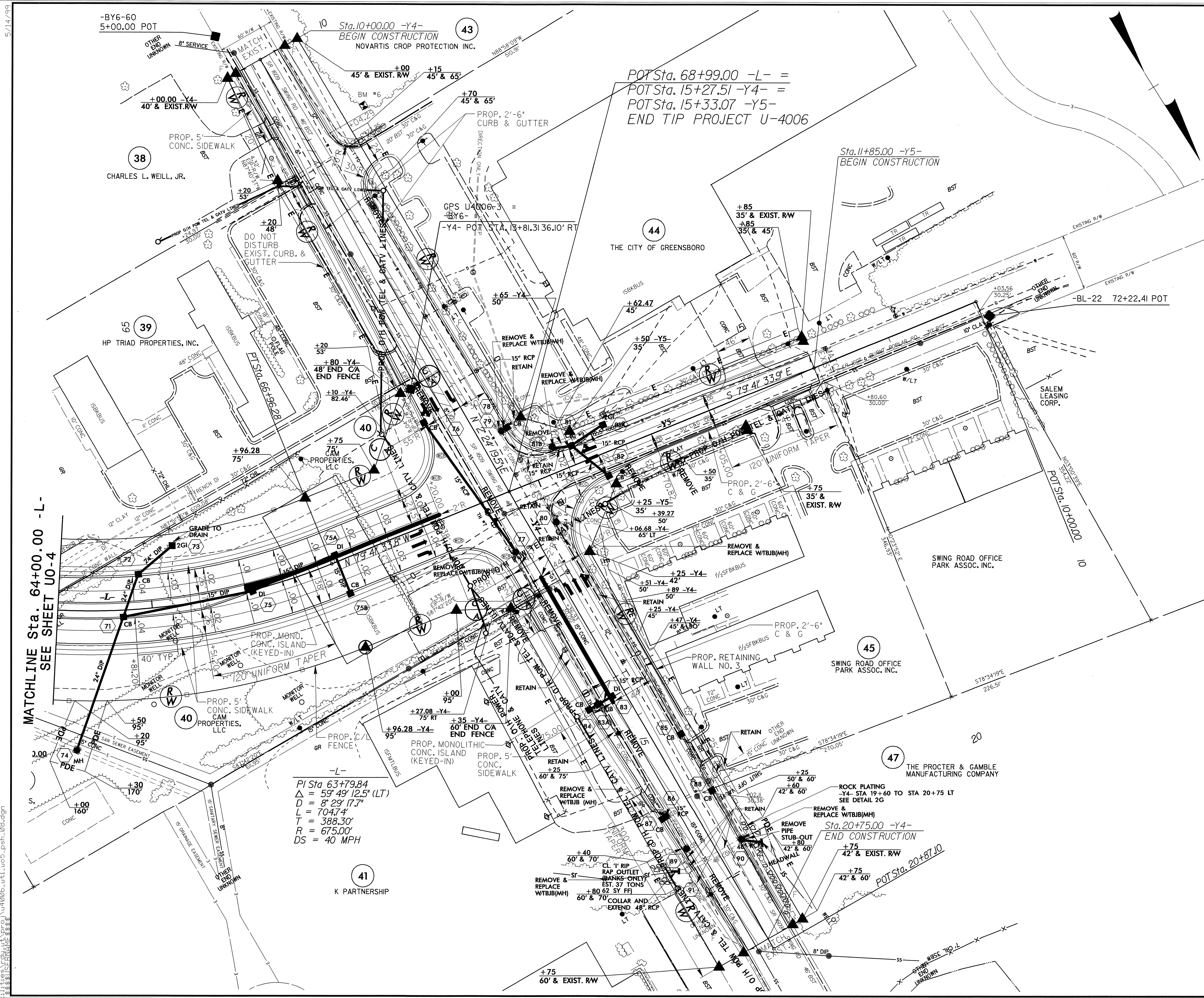
MATCHLINE Sta. 64+00.00 -L-
SEE SHEET UO-5

SEE SHEET 11 FOR -L- PROFILE

12-MAY-2009 08:05
r:\utilities\city_of_greensboro\proj\4006-uti_uo4_psh_07.dgn

UTILITIES BY OTHERS

NOTE:
ALL PROPOSED UTILITY WORK SHOWN ON THIS SHEET WILL BE DONE BY OTHERS



MATCHLINE Sta. 64+00.00 -L-
SEE SHEET U0-4

-L-
 $PI\ Sta\ 63+79.84$
 $\Delta = 59^\circ 49' 12.5" (LT)$
 $D = 8' 29' 17.7"$
 $L = 704.74'$
 $T = 388.30'$
 $R = 675.00'$
 $DS = 40\ MPH$

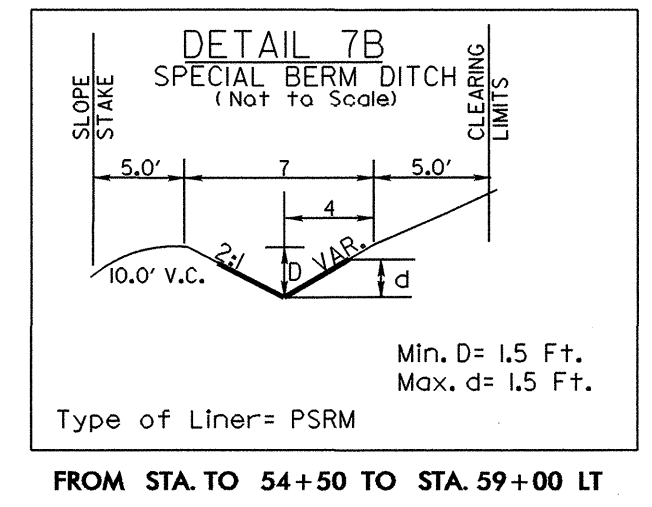
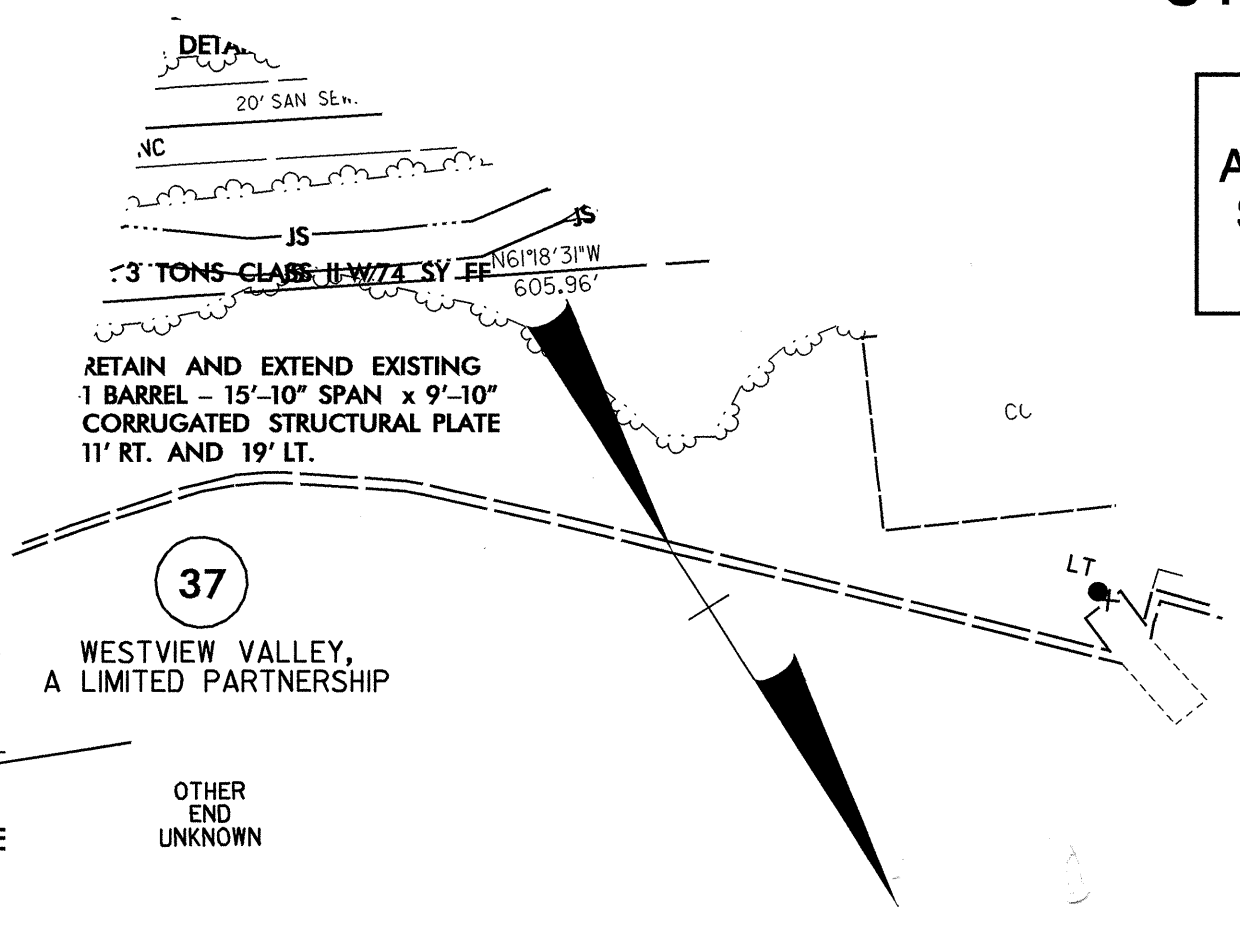
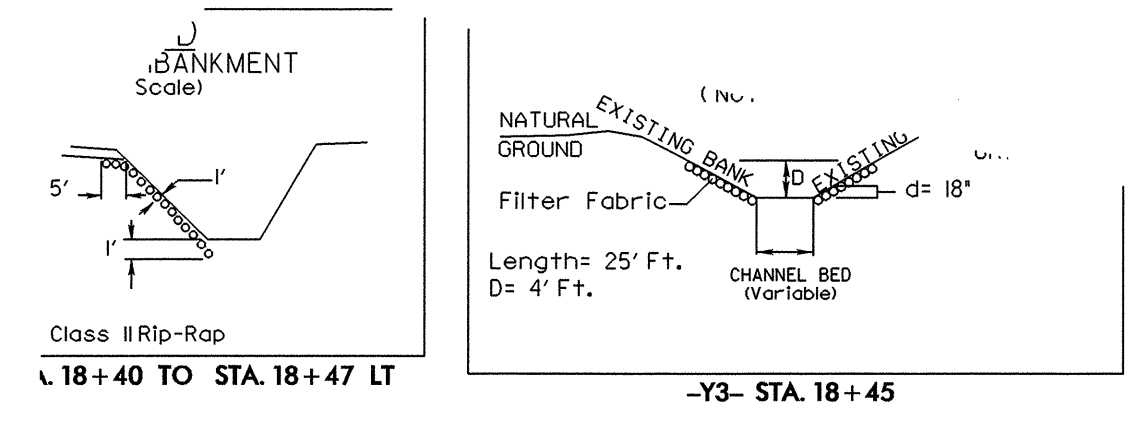
NOTES:
SEE SIGNAL PLANS FOR EXACT LOCATIONS OF WHEELCHAIR RAMPS.
SEE WALL PLANS FOR DESIGN OF RETAINING WALL.

SEE SHEET 11 FOR -L- PROFILE
 SEE SHEET 13 FOR -Y3- PROFILE
 SEE SHEET 14 FOR -Y4- PROFILE
 SEE SHEET 14 FOR -Y5- PROFILE

5/14/99
 05-MAY-2009 12:59
 C:\Users\j\Documents\4006\U0-5\psd\psd.dgn
 U:\Users\j\Documents\4006\U0-5\psd\psd.dgn

UTILITIES BY OTHERS

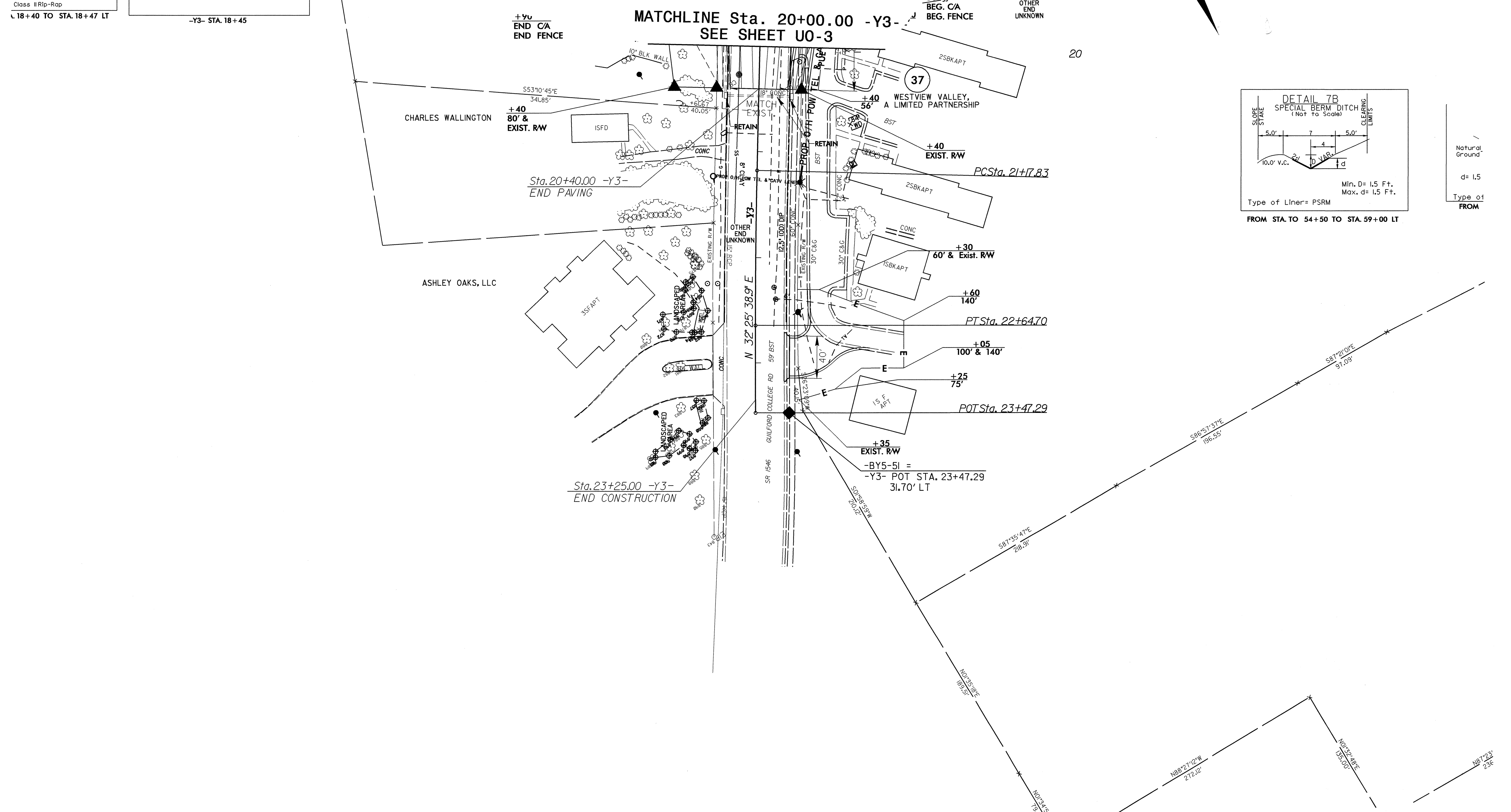
NOTE:
 ALL PROPOSED UTILITY WORK
 SHOWN ON THIS SHEET WILL
 BE DONE BY OTHERS



Natural Ground
 d= 1.5
 Type of FROM

5/14/99

05-MAY-2009 13:00
 u4006.utl.uc6.psh_09.dgn



SEE SHEET 13 FOR -Y3- PROFILE