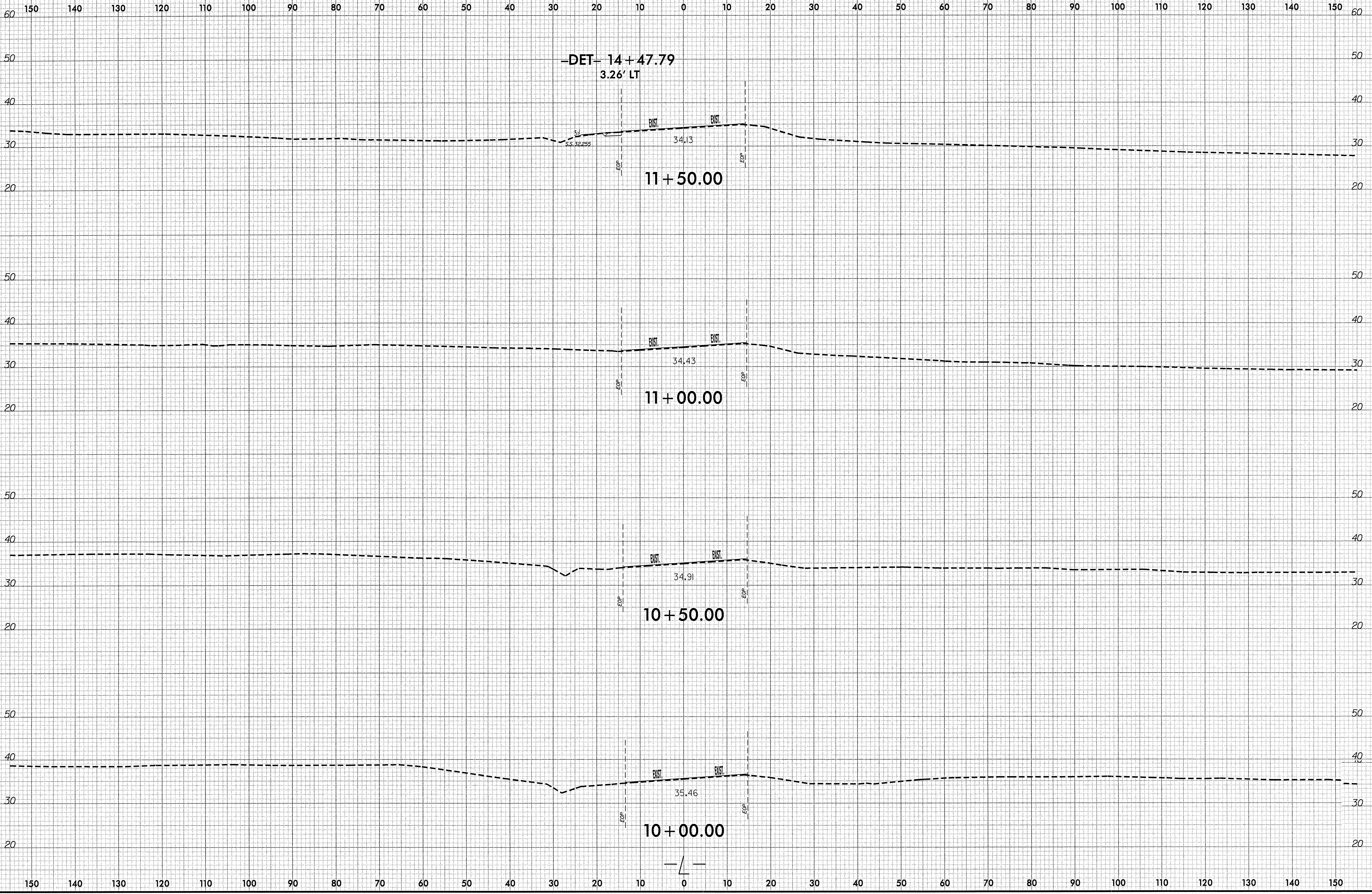
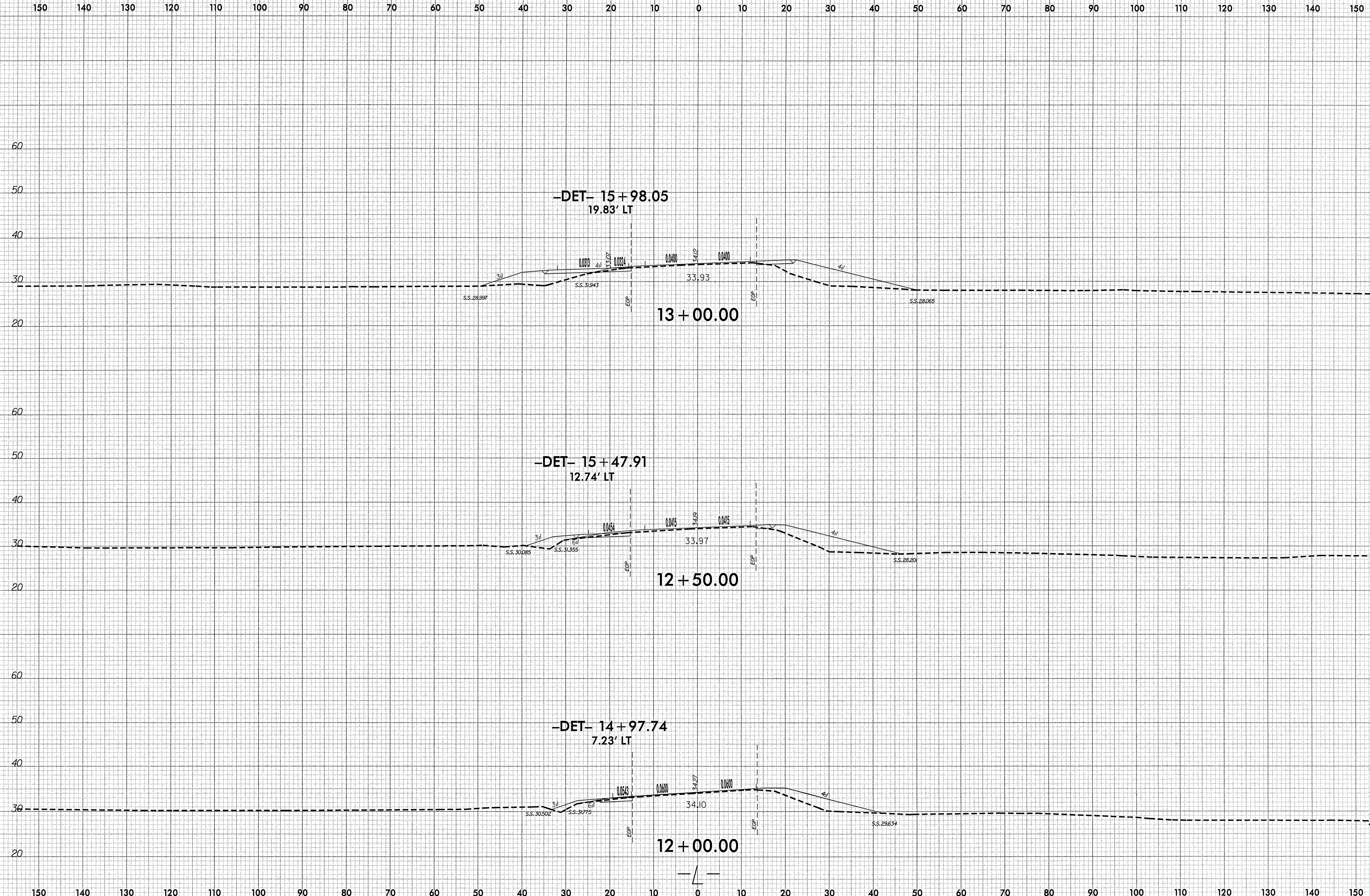


8/23/99

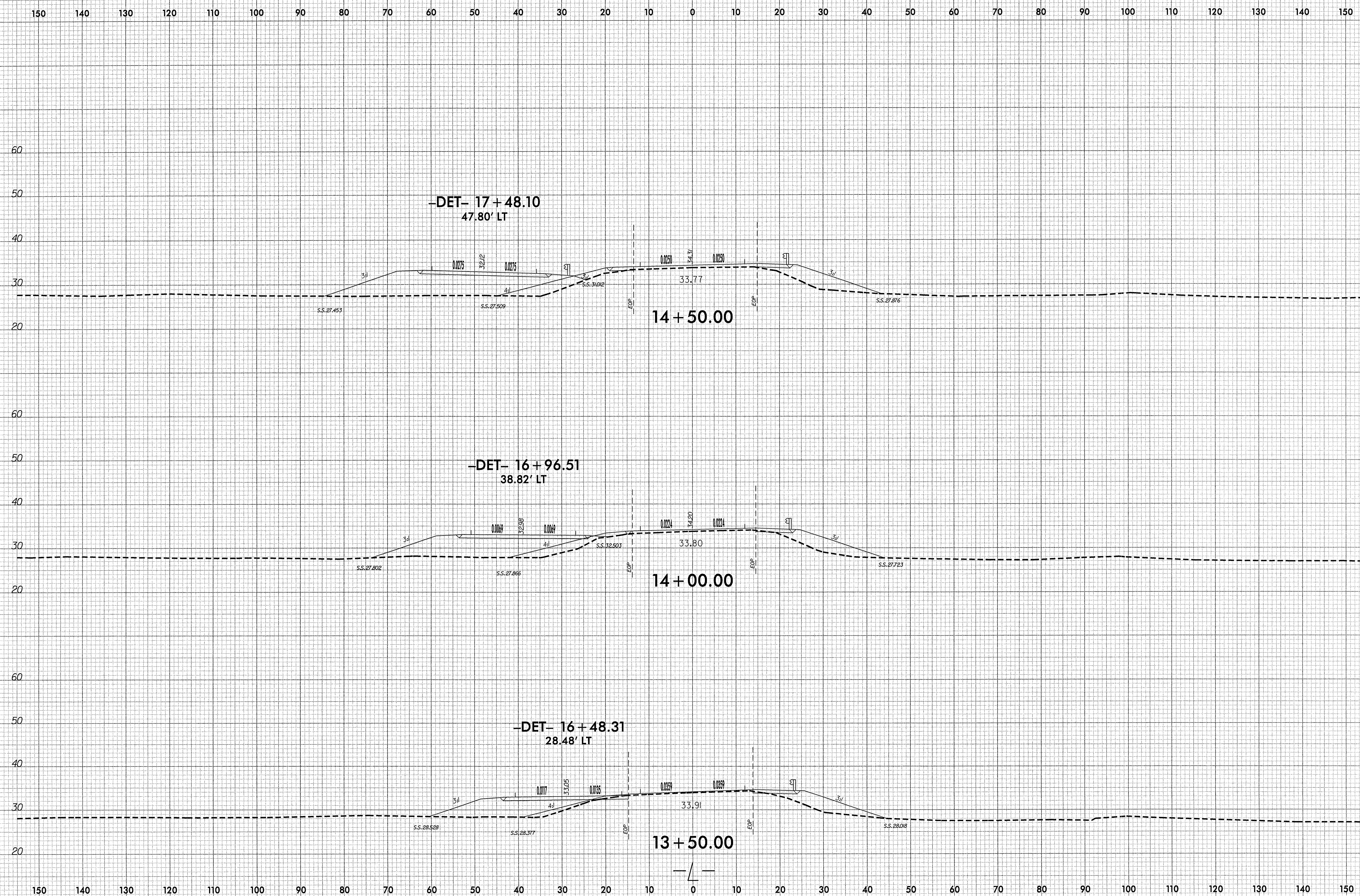


20-MAR-2009 12:18
Y:\Projects\VICDOT\Bridges\Group 46 Final Design\B4030\Roadway\Xsec\B4030_rdy_xpl.dgn
licole AT PA20625

8/23/99
20-MAR-2009 12:19
C:\Program Files\AutoCAD\Projects\B4030\Roadway\Xsc\B4030_rdy_xpl.dgn
L Cole

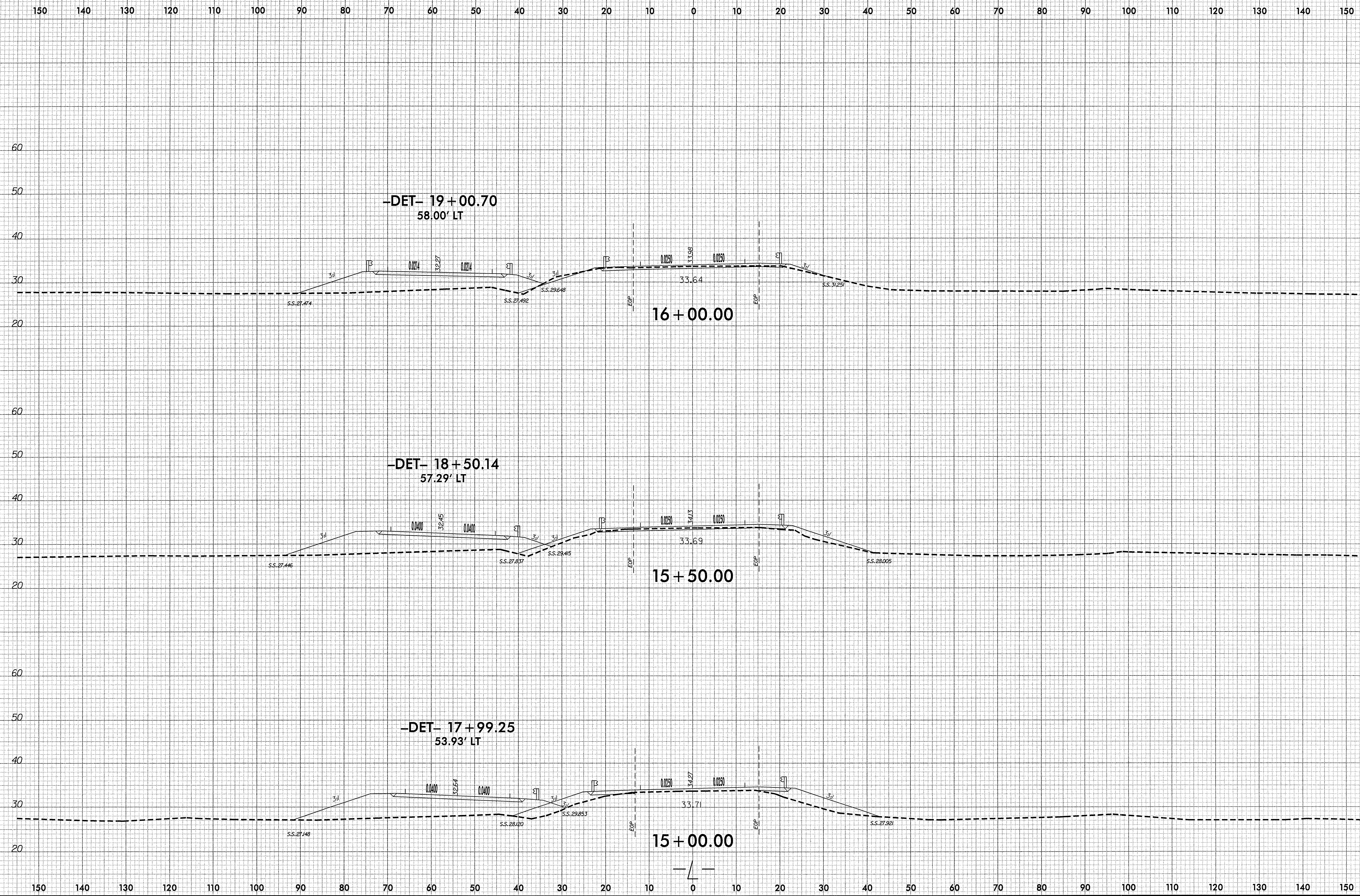


8/23/99
20-MAR-2009 12:08
Y:\Projects\NC01\Bridges\Group 46 Final Design\B4030\Roadway\Xac\B4030_rdy_xpl.dgn
L:\c01e



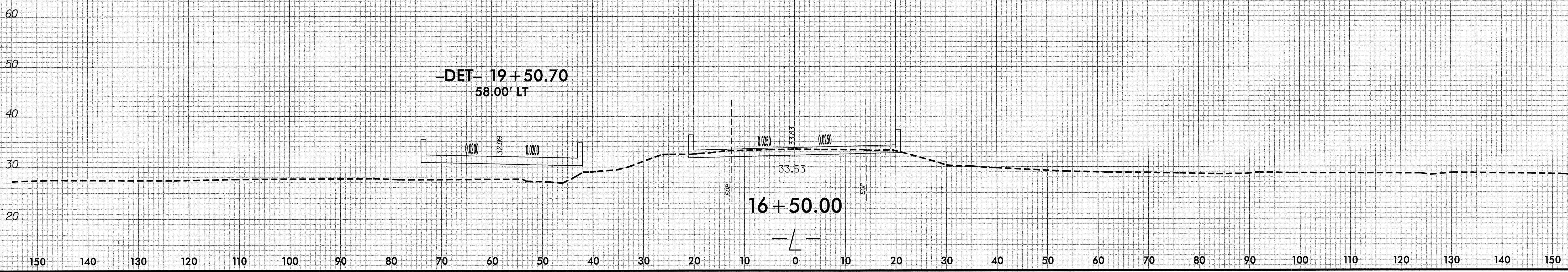
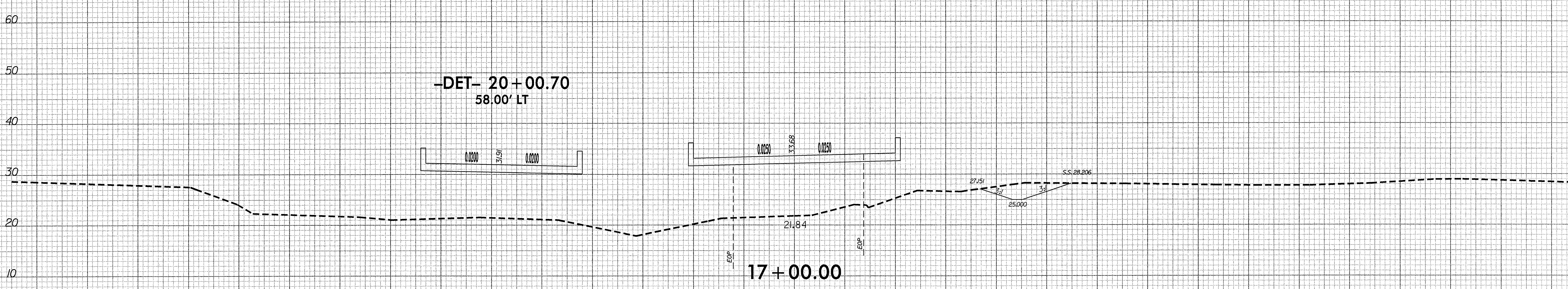
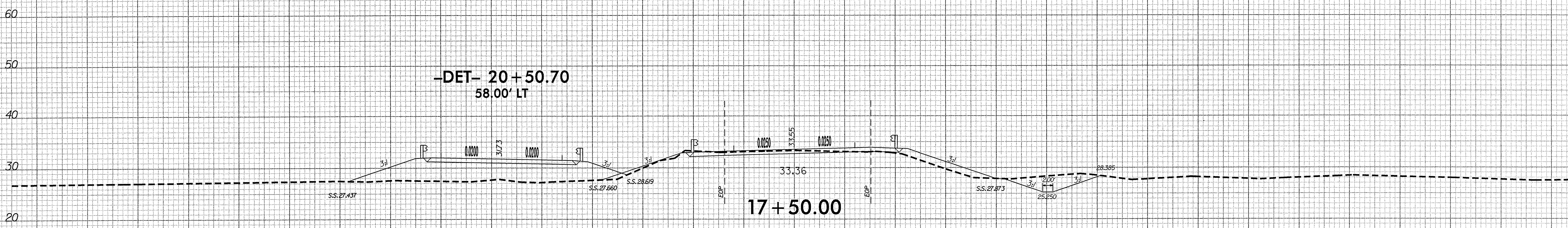
8/23/99
20-MAR-2009 12:19
Y:\Projects\NC001\Bridges\Group 46 Final Design\B4030\Roadway\sc\B4030_r.dwg_xpl.dgn
J.Cole

0 5 10	PROJ. REFERENCE NO.	SHEET NO.
	B-4030	X-4



8/23/99

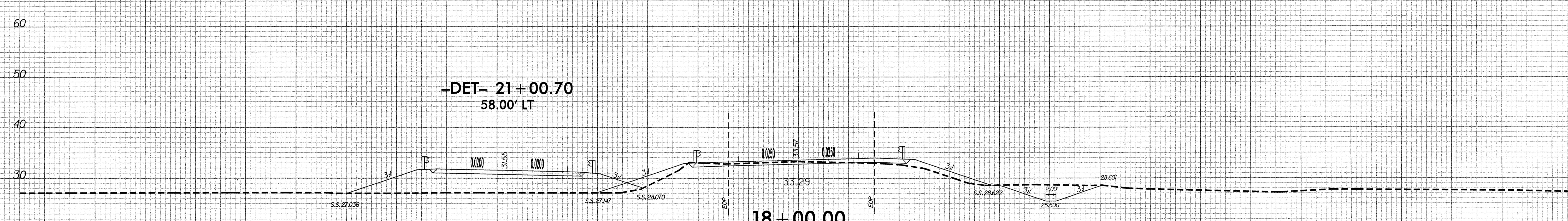
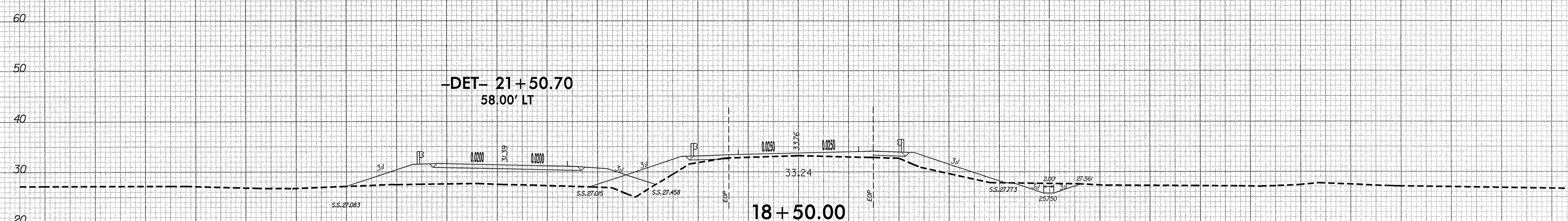
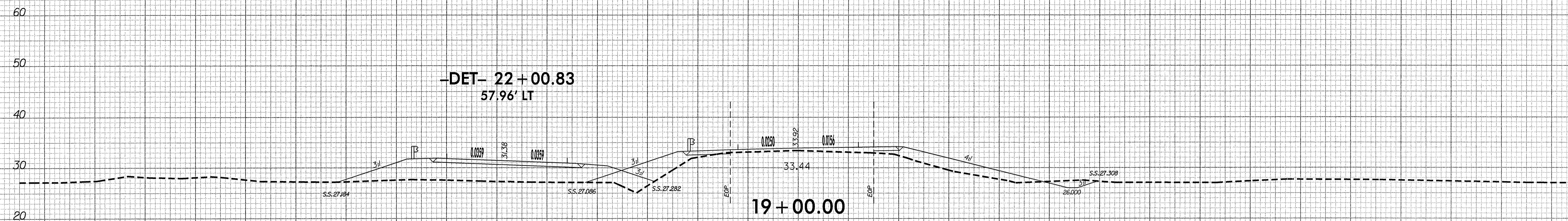
150 140 130 120 110 100 90 80 70 60 50 40 30 20 10 0 10 20 30 40 50 60 70 80 90 100 110 120 130 140 150



20-MAR-2009 12:18
 C:\Program Files\AutoCAD\AutoCAD 2004\Projects\Bridges\Group 46 Final Design\B4030\Roadway\Xsc\B4030L-rdy-xpl.dgn
 J:\Projects\Bridges\B4030\Roadway\Xsc\B4030L-rdy-xpl.dgn

8/23/99
20-MAR-2009 12:18
\\Projects\NET\Bridges\Group 46 Final Design\B4030\Roadway\Xsc\B4030_rdy_xpl.dgn
lec1e

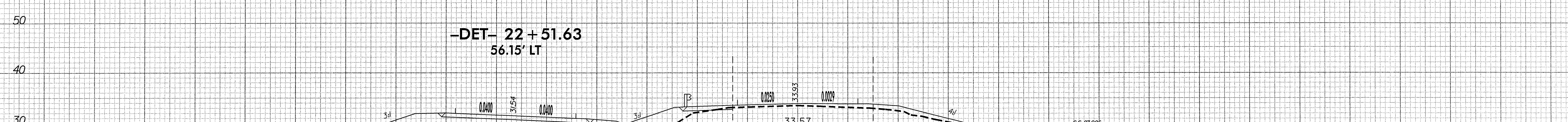
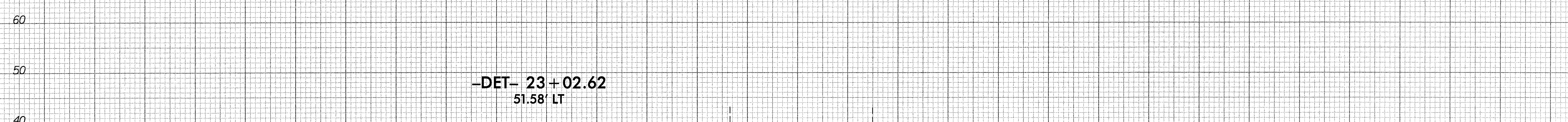
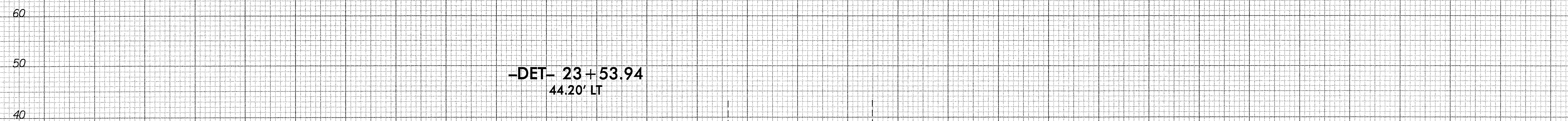
150 140 130 120 110 100 90 80 70 60 50 40 30 20 10 0 10 20 30 40 50 60 70 80 90 100 110 120 130 140 150



150 140 130 120 110 100 90 80 70 60 50 40 30 20 10 0 10 20 30 40 50 60 70 80 90 100 110 120 130 140 150

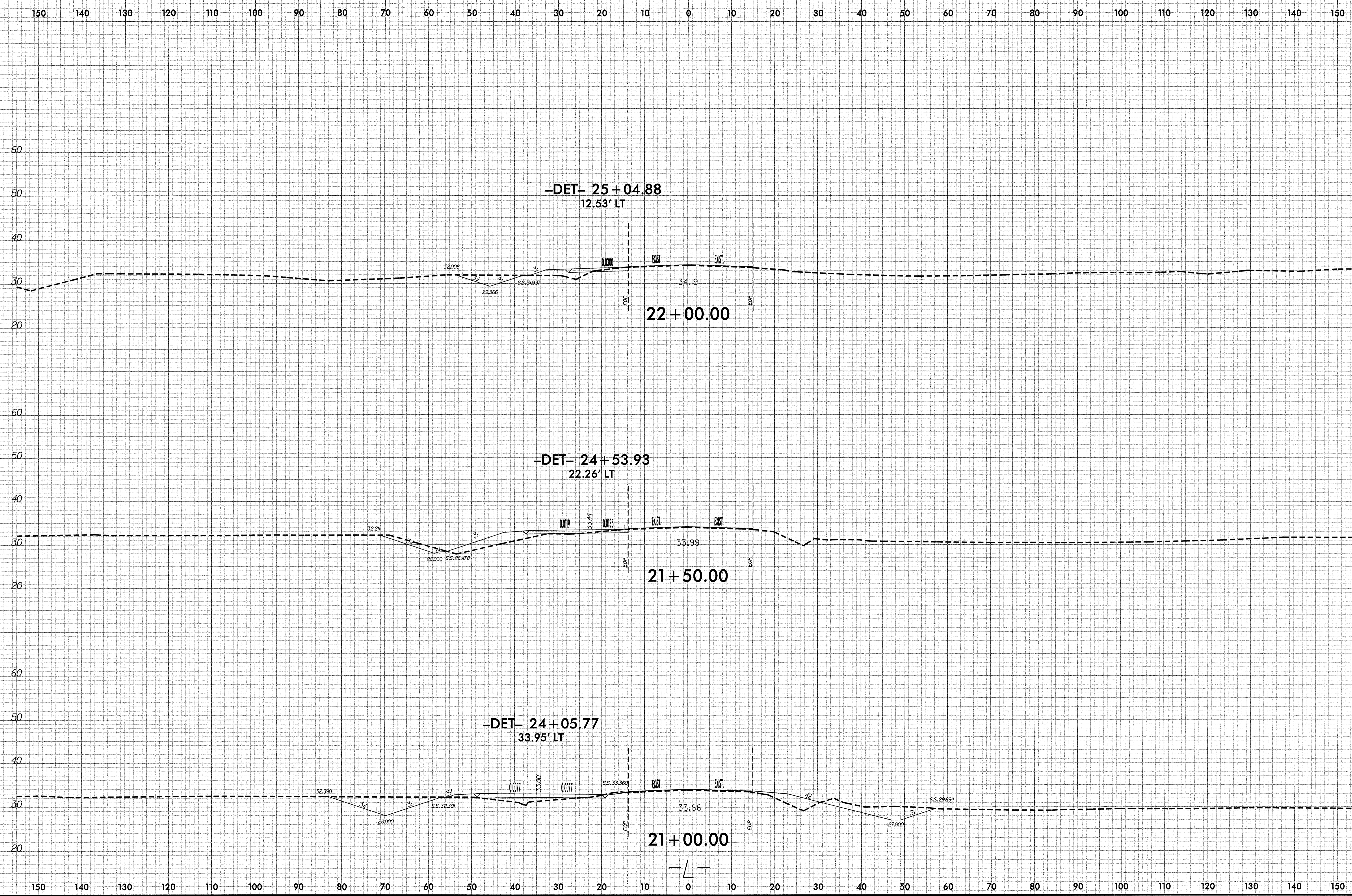
07-APR-2009 09:11
Y:\Projects\NC001\Bridges\Group 46 Final Design\B4030\Roadway\Xac\B4030L-rdy-yp1.dgn
L:\calle AT LPA2025

150 140 130 120 110 100 90 80 70 60 50 40 30 20 10 0 10 20 30 40 50 60 70 80 90 100 110 120 130 140 150

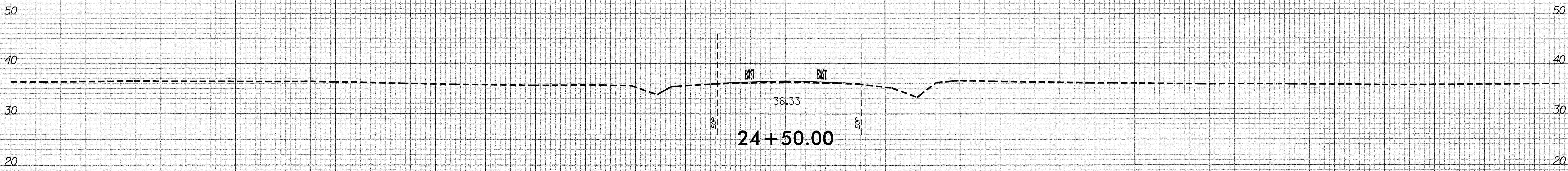


150 140 130 120 110 100 90 80 70 60 50 40 30 20 10 0 10 20 30 40 50 60 70 80 90 100 110 120 130 140 150

8/23/99
07-APR-2009 09:11
Y:\Projects\NC001\Bridges Group 46 Final Design\B4030\Roadway\Xac\B4030_rdy_xp1.dgn
I:\calle



150 140 130 120 110 100 90 80 70 60 50 40 30 20 10 0 10 20 30 40 50 60 70 80 90 100 110 120 130 140 150



150 140 130 120 110 100 90 80 70 60 50 40 30 20 10 0 10 20 30 40 50 60 70 80 90 100 110 120 130 140 150