

05/08/05

TIP PROJECT: U-5141

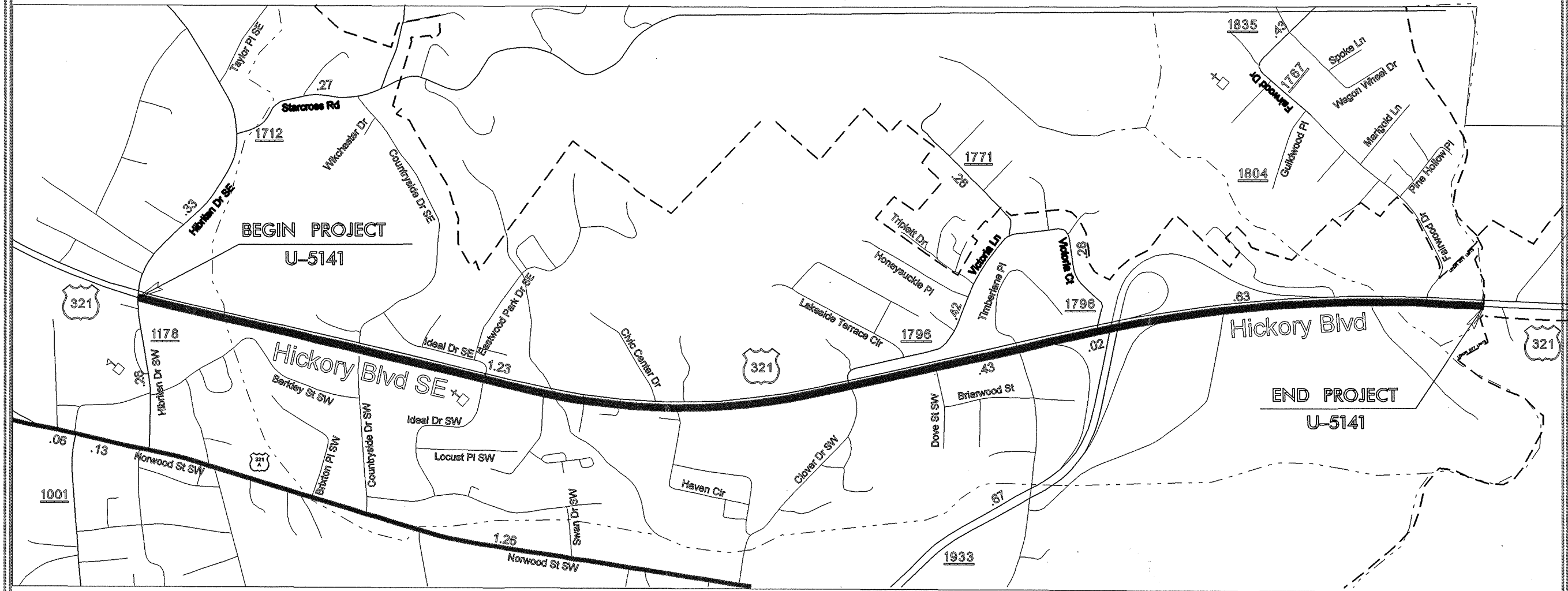
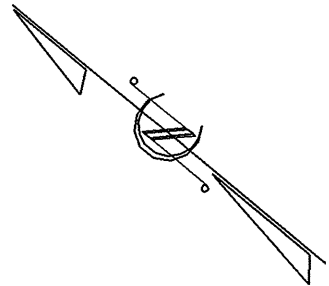
STATE OF NORTH CAROLINA
DIVISION OF HIGHWAYS

STATE PROJECT REFERENCE NO.	SHEET NO.	TOTAL SHEETS
U-5141	1	

CALDWELL COUNTY

LOCATION: US 321 SBL FROM SR 1178 (HIBRITEN DRIVE)
TO SOUTH CITY LIMITS OF LENOIR

TYPE OF WORK: MILLING, RESURFACING, SHOULDER RECONSTRUCTION
& PAVEMENT MARKINGS



MAP 1

\$\$\$\$\$SYTIME\$\$\$\$\$
\$\$\$\$\$DGN\$\$\$\$\$
\$\$\$\$\$USERNAME\$\$\$\$\$

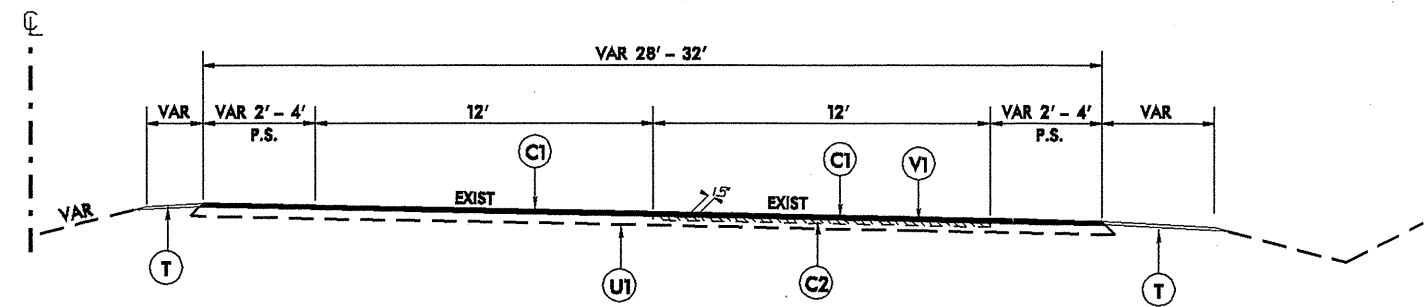
Prepared in the Office of:
DIVISION OF HIGHWAYS
801 STATESVILLE ROAD, NORTH WILKESBORO, NC 28659

2006 STANDARD SPECIFICATIONS

RIGHT OF WAY DATE: NA	JOE L. LAWS, PE DIVISION PROJECT MANAGER
LETTING DATE: JULY 21, 2009	MICHAEL A. PETTYJOHN, PE DIVISION ENGINEER

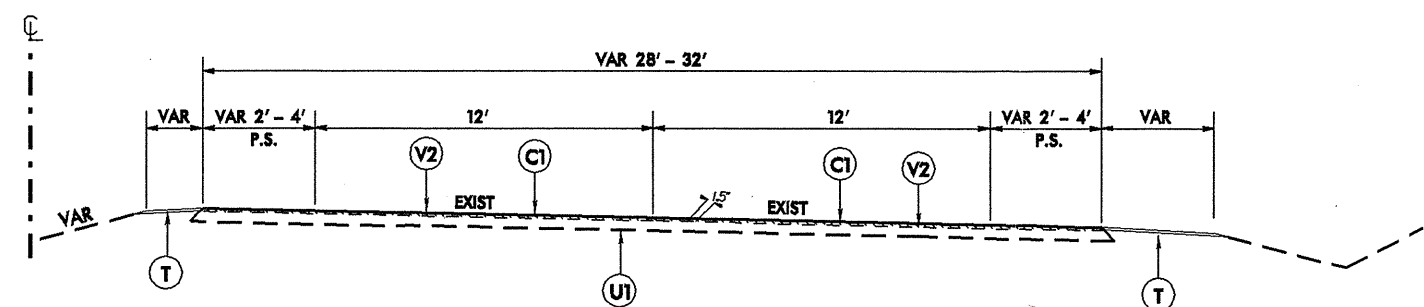
DIVISION OF HIGHWAYS
STATE OF NORTH CAROLINA

STATE HIGHWAY DESIGN ENGINEER P.R.



TYPICAL SECTION NO. 1

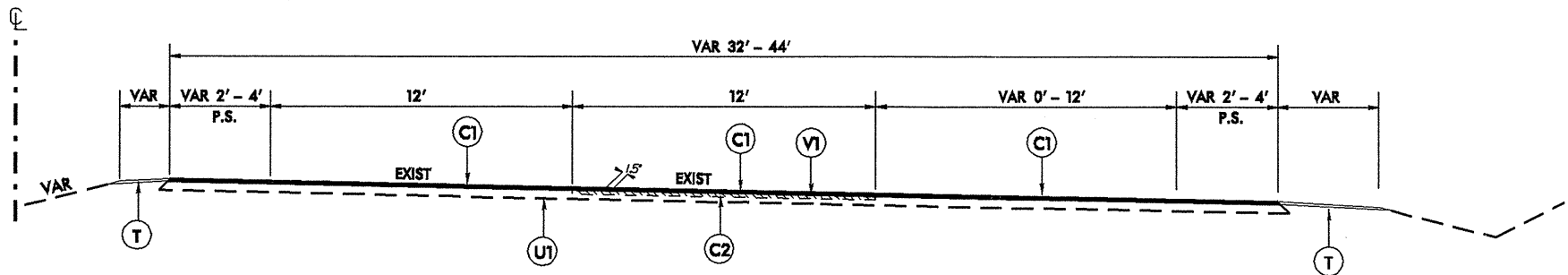
MAP #1 - US 321 SBL FROM SR 1178 (HIBRITEN DRIVE) TO SCL OF LENOIR (2.32 MI)



TYPICAL SECTION NO. 2

MAP #1 - US 321 SBL FROM 100' NORTH OF SR 1178 OVERPASS TO 100' SOUTH OF SR 1178 OVERPASS

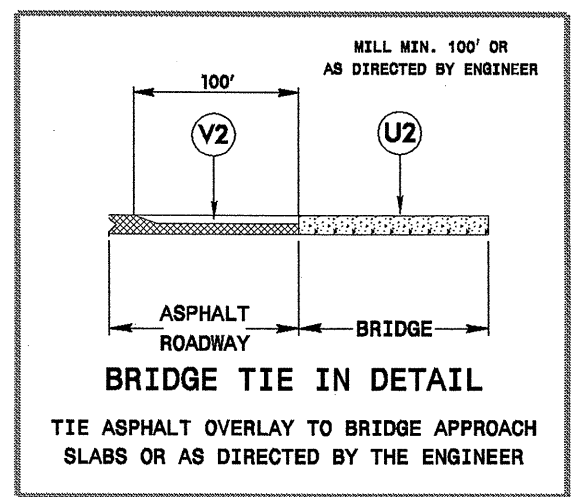
MAP #1 - US 321 SBL FROM 100' NORTH OF COUNTRYSIDE DRIVE OVERPASS TO 100' SOUTH OF COUNTRYSIDE DRIVE OVERPASS



TYPICAL SECTION NO. 3

MAP #1 - US 321 SBL FROM SR 1178 (HIBRITEN DRIVE) TO SCL OF LENOIR (2.32 MI)
RIGHT TURN LANE SECTIONS ONLY

PAVEMENT SCHEDULE	
C1	1½" ASPHALT CONCRETE SURFACE COURSE, TYPE S 9.5 C, AT AN AVERAGE RATE OF 168 LBS. PER SQ. YD. (OVERLAY)
C2	1½" ASPHALT CONCRETE SURFACE COURSE, TYPE S 9.5 C, AT AN AVERAGE RATE OF 168 LBS. PER SQ. YD. (MILL AND FILL)
T	SHOULDER RECONSTRUCTION
U1	EXISTING ASPHALT PAVEMENT
U2	EXISTING BRIDGE DECK
V1	MILLING BITUMINOUS PAVEMENT. 1½" DEPTH
V2	MILLING BITUMINOUS PAVEMENT. 0" - 1½" DEPTH



U-5141: US 321 SBL FROM SR 1178 (HIBRITEN DRIVE) TO SOUTH CITY LIMITS OF LENOIR		
DIVISION II	CALDWELL COUNTY	
REVISIONS	INIT.	DATE
N.C. DEPARTMENT of TRANSPORTATION DIVISION of HIGHWAYS DIVISION ELEVEN		SCALE: N/A DATE: 4/2009 PREPARED BY: J. L. LAWS REVIEWED BY: REVIEWED BY:

PROJECT NO.	SHEET NO.	TOTAL NO.
U-5141	3	

SUMMARY OF QUANTITIES

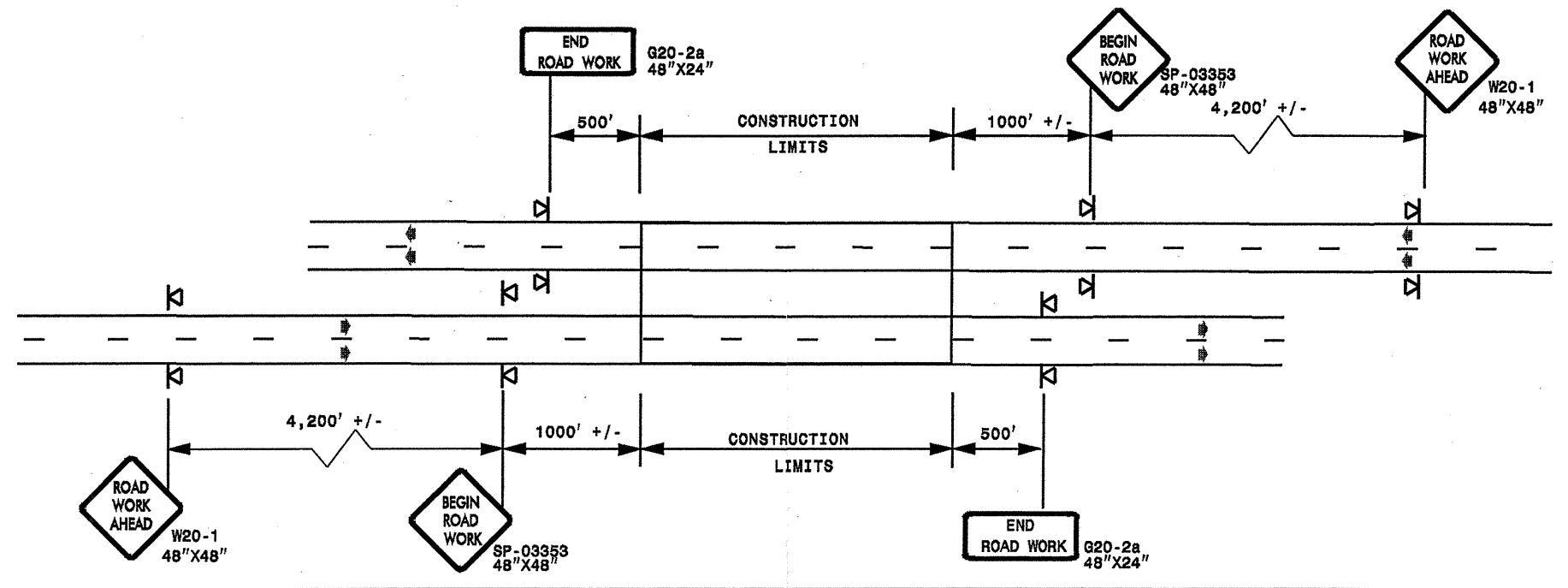
PROJECT NO	COUNTY	MAP NO	ROUTE	DESCRIPTION	TYP NO	LENGTH MI	WIDTH FT	INCIDENTAL STONE BASE TONS	SHOULDER RECONSTRUCTION \$ MI	0" - 1½" MILLING SY	1½" MILLING SY	SURFACE COURSE, \$9.5C TONS	PG 70-22 PLANT MIX TONS	PORTABLE LIGHTING LS	SEED & MULCHING AC
U-5141	Caldwell	1	US 321 SBL	FROM SR 1178 TO SCL OF LENOIR	1, 2, & 3	2.32	31	100	4.64	215	17,184	5,300	318	1	1.69
TOTAL FOR PROJ NO. U-5141						2.32		100	4.64	215	17,184	5,300	318	1	1.69
GRAND TOTAL						2.32		100	4.64	215	17,184	5,300	318	1	1.69

THERMOPLASTIC AND PAINT QUANTITIES

PROJECT NO	COUNTY	MAP NO	ROUTE	DESCRIPTION	4589000000-N	4725000000-E				4810000000-E		4847000000-E		4847110000-E	4905000000-N
					TRAFFIC CONTROL LUMP SUM LS	THERMO LT ARROW 90 M EA	THERMO STR ARROW 90 M EA	THERMO RT ARROW 90 M EA	THERMO STR & RT ARROW 90 M EA	4" WHITE PAINT LF	4" YELLOW PAINT LF	4" WHITE POLYUREA (STANDARD BEADS) LF	4" YELLOW POLYUREA (STANDARD BEADS) LF	8" WHITE POLYUREA LF	SNOW PLOWABLE MARKERS EA
U-5141	Caldwell	1	US 321 SBL	FROM SR 1178 TO SCL OF LENOIR	1.00	5	16	4	2	3,200	12,250	16,595	11,980	1,030	153
TOTAL FOR PROJ NO. U-5141					1	5	16	4	2	3,200	12,250	16,595	11,980	1,030	153
GRAND TOTAL					1	5	16	4	2	3,200	12,250	16,595	11,980	1,030	153
										15,450		28,575			

ADVANCE WORK ZONE WARNING SIGNING FOR FREEWAYS (4 LANES OR GREATER)

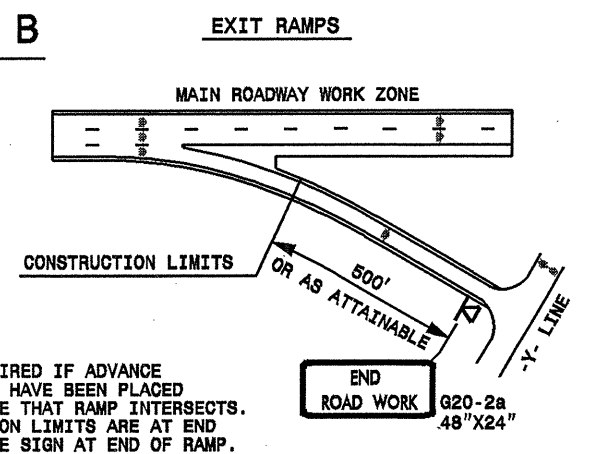
DETAIL A



STATE OF NORTH CAROLINA
DEPT. OF TRANSPORTATION
DIVISION OF HIGHWAYS
RALEIGH, N.C.

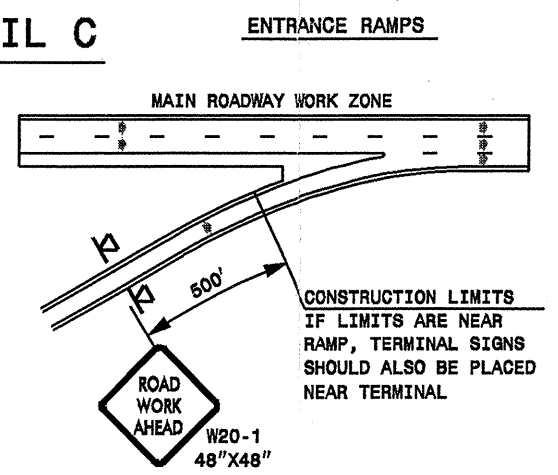
ROADWAYS INTERSECTING ALONG FREEWAY WORK ZONE (Y-LINES)

DETAIL B

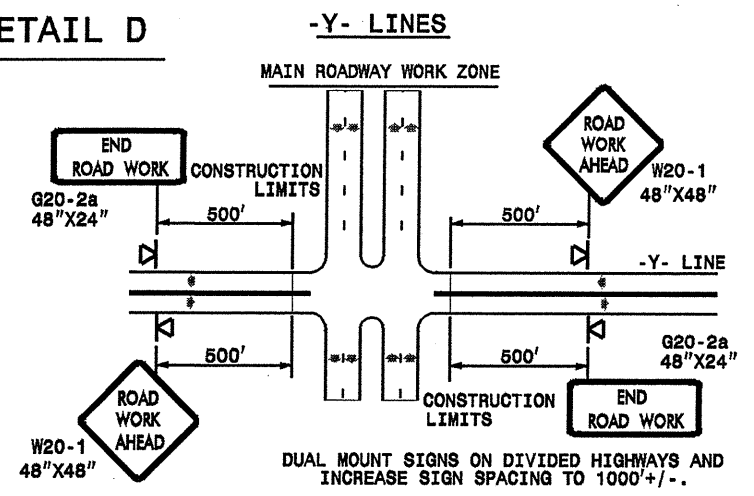


NOTE:
SIGN NOT REQUIRED IF ADVANCE WARNING SIGNS HAVE BEEN PLACED ALONG -Y- LINE THAT RAMP INTERSECTS. IF CONSTRUCTION LIMITS ARE AT END OF RAMP, PLACE SIGN AT END OF RAMP.

DETAIL C



DETAIL D



GENERAL NOTES


- USE FLUORESCENT ORANGE SHEETING (TYPE VII OR HIGHER) ON ALL ADVANCE WORK ZONE SIGNS.
- DO NOT INSTALL ADVANCE WARNING SIGNS MORE THAN 3 DAYS PRIOR TO BEGINNING OF WORK.
- ALL SIGN SPACING DIMENSIONS ARE APPROXIMATE, FIELD ADJUST AS NECESSARY OR AS DIRECTED.
- USE PORTABLE WORK ZONE SIGNS ONLY WITH PORTABLE WORK ZONE SIGN STANDS SPECIFICALLY DESIGNED FOR ONE ANOTHER. PORTABLE WORK ZONE SIGNS MAY BE ROLL UP OR APPROVED COMPOSITE.
- PROVIDE PORTABLE WORK ZONE SIGN STANDS, PORTABLE SIGNS AND SIGN SHEETING WHICH ARE LISTED ON THE NORTH CAROLINA DEPARTMENT OF TRANSPORTATION'S APPROVED PRODUCT LIST OR ACCEPTED AS TRAFFIC QUALIFIED BY THE TRAFFIC CONTROL UNIT.
- ** TWO-WAY UNDIVIDED ADVANCE WARNING SIGN CONFIGURATION MAY BE USED ON MULTI-LANE FACILITIES WHERE CONDITIONS LIMIT THE USE OF DUAL MOUNTED SIGNS AS DETERMINED BY THE ENGINEER.

LEGEND

◀ PORTABLE SIGN

➡ DIRECTION OF TRAFFIC FLOW

**DETAIL DRAWING
FOR FREEWAYS
WORK ZONE WARNING SIGNS
(SHORT-DURATION LANE CLOSURES)**

APPROVED: _____ DATE: _____	DETAIL DRAWING FOR FREEWAYS WORK ZONE WARNING SIGNS	
SEAL	SCALE: NONE	REVISIONS
	DATE: _____	7-98 10/01
	DWG. BY: _____	10-98 08/04
	DESIGN BY: _____	01/01 11/04
REVIEWED BY: _____		

20-MAY-2009 2:01:17 PM s:\signing\resurfacing\resurfacing2009\dwg\45110.3.st1.u-5141.cadd\well.us21sb\c202371.45110.3.st1.u-5141.freewayesgreat.july2006.por\table.dgn