

21-APR-2009 10:04
P:\TIPProjects-B\B4410\Trg\Signing\CADD\NMP\B-4410_Sgn_PMP_1.dgn
walter.johnson AT 1E221737


T.I.P.:B-4410

CONTRACT: C202154

STATE OF NORTH CAROLINA
DEPARTMENT OF TRANSPORTATION

PAVEMENT MARKING PLAN
ANSON COUNTY

LOCATION: BRIDGE No. 307 OVER THE WINSTON-SALEM SOUTH
BOUND RAILROAD ON SR 1627 (PINKSTON RIVER RD)

TIP NO. B-4410	SHEET NO. PMP-1
APPROVED: <i>[Signature]</i>	
DATE: 4/21/09	
SEAL 	

ROADWAY STANDARD DRAWING

THE FOLLOWING ROADWAY STANDARDS AS APPEAR IN "ROADWAY STANDARD DRAWINGS" - PROJECT SERVICES UNIT - N.C. DEPARTMENT OF TRANSPORTATION - RALEIGH, N.C., DATED JULY 2006 ARE APPLICABLE TO THIS PROJECT AND BY REFERENCE HEREBY ARE CONSIDERED A PART OF THESE PLANS:

STD. NO.	TITLE
1205.01	PAVEMENT MARKINGS - LINE TYPES AND OFFSETS
1205.02	PAVEMENT MARKINGS - 2 LANE AND MULTILANE ROADWAYS
1205.04	PAVEMENT MARKINGS - INTERSECTIONS
1205.12	PAVEMENT MARKINGS - BRIDGES
1250.01	PAVEMENT MARKER SPACING
1251.01	RAISED PAVEMENT MARKERS - TEMPORARY AND PERMANENT
1261.01	GUARDRAIL AND BARRIER DELINEATOR SPACING
1261.02	GUARDRAIL AND BARRIER DELINEATOR TYPES
1262.01	GUARDRAIL END DELINEATION

GENERAL NOTES

THE FOLLOWING GENERAL NOTES APPLY AT ALL TIMES FOR THE DURATION OF THE CONSTRUCTION PROJECT, EXCEPT WHEN OTHERWISE NOTED IN THE PLAN, OR DIRECTED BY THE ENGINEER.

A) INSTALL PAVEMENT MARKINGS AND PAVEMENT MARKERS ON THE FINAL SURFACE AS FOLLOWS:

ROAD NAME	MARKING	MARKER
SR 1627 PINKSTON RIVER RD BRIDGE	PAINT COLD APPLIED PLASTIC	PERMANENT RAISED PERMANENT RAISED

B) PLACE TWO APPLICATIONS OF PAINT PAVEMENT MARKINGS ON THE FINAL WEARING SURFACE. PLACE THE SECOND APPLICATION OF PAINT UPON SUFFICIENT DRYING TIME OF THE FIRST.

C) TIE PROPOSED PAVEMENT MARKING LINES TO EXISTING PAVEMENT MARKING LINES.

D) REMOVE/REPLACE ANY CONFLICTING/DAMAGED PAVEMENT MARKINGS AND MARKERS.

E) PASSING ZONES WILL BE DETERMINED IN THE FIELD AND MUST BE APPROVED BY THE ENGINEER.

INDEX

SHEET NO.	DESCRIPTION
PMP-1	PAVEMENT MARKING PLAN TITLE SHEET
PMP-2	FINAL PAVEMENT MARKING SCHEDULE AND PAVEMENT MARKING DETAIL

PLAN PREPARED BY: N.C.D.O.T. SIGNING AND DELINEATION UNIT

Ayman I Alqudwah, P.E. SIGNING & DELINEATION REGIONAL ENGINEER

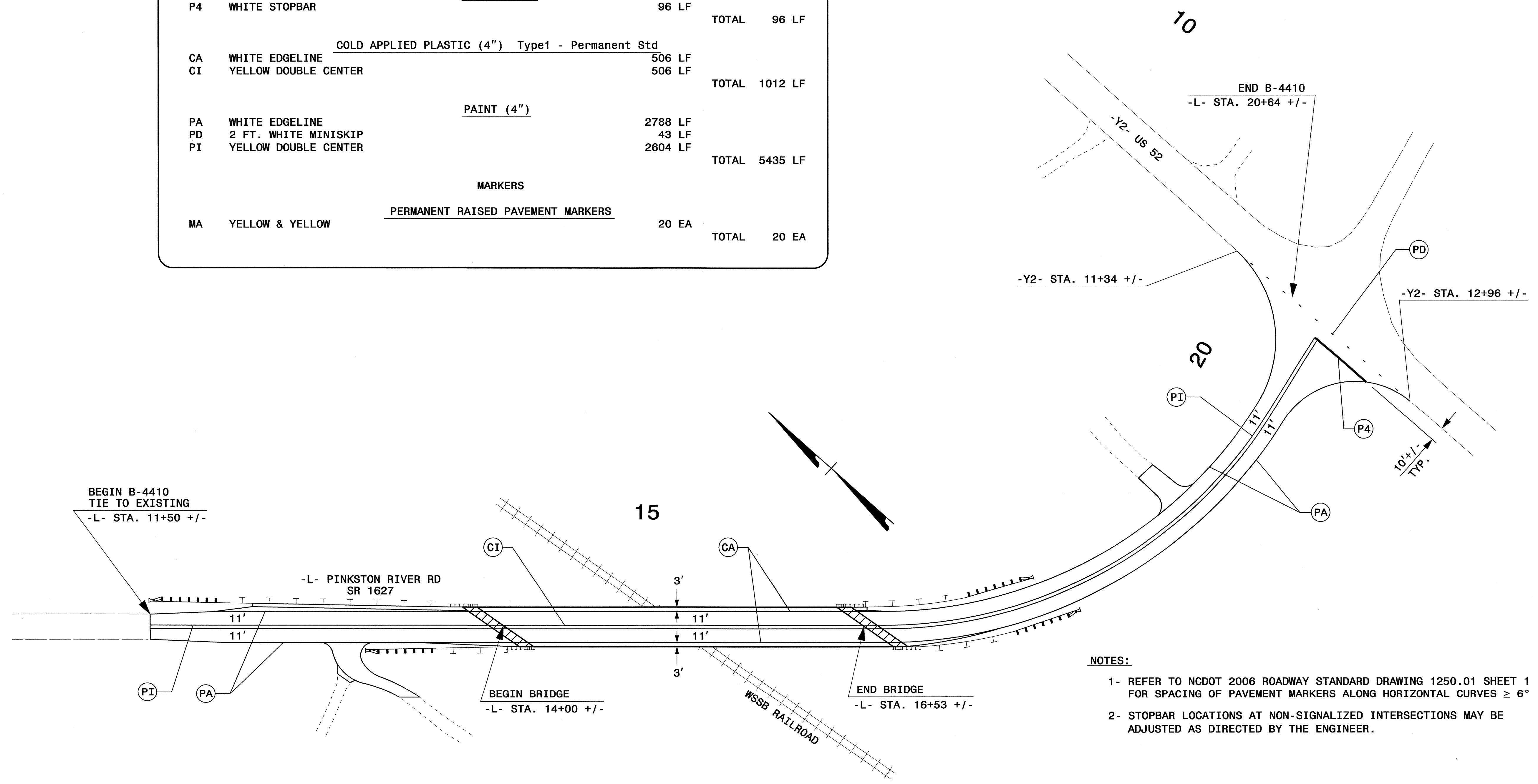
Walter Johnson SIGNING & DELINEATION PROJECT DESIGN ENGINEER/TECHNICIAN

TIP NO.	SHEET NO.
B-4410	PMP-2
APPROVED: <i>[Signature]</i>	
DATE: 4/2/09	
SEAL	



B-4410 FINAL PAVEMENT MARKING SCHEDULE

SYMBOL	DESCRIPTION	PAY ITEM	QUANTITY	TOTAL
FINAL PAVEMENT MARKINGS				
PAINT (24")				
P4	WHITE STOPBAR		96 LF	
		TOTAL		96 LF
COLD APPLIED PLASTIC (4") Type1 - Permanent Std				
CA	WHITE EDGELINE		506 LF	
CI	YELLOW DOUBLE CENTER		506 LF	
		TOTAL		1012 LF
PAINT (4")				
PA	WHITE EDGELINE		2788 LF	
PD	2 FT. WHITE MINISKIP		43 LF	
PI	YELLOW DOUBLE CENTER		2604 LF	
		TOTAL		5435 LF
MARKERS				
PERMANENT RAISED PAVEMENT MARKERS				
MA	YELLOW & YELLOW		20 EA	
		TOTAL		20 EA



- NOTES:**
- REFER TO NCDOT 2006 ROADWAY STANDARD DRAWING 1250.01 SHEET 1 FOR SPACING OF PAVEMENT MARKERS ALONG HORIZONTAL CURVES $\geq 6^\circ$
 - STOPBAR LOCATIONS AT NON-SIGNALIZED INTERSECTIONS MAY BE ADJUSTED AS DIRECTED BY THE ENGINEER.

FINAL PAVEMENT MARKING SCHEDULE AND PAVEMENT MARKING DETAIL

21-APR-2009 11:22 21:\pmp\project\B-4410\Tracing\CAADD\pmp\B-4410-Sgn_PMP-2.dgn Walter Johnson AT 1E221737