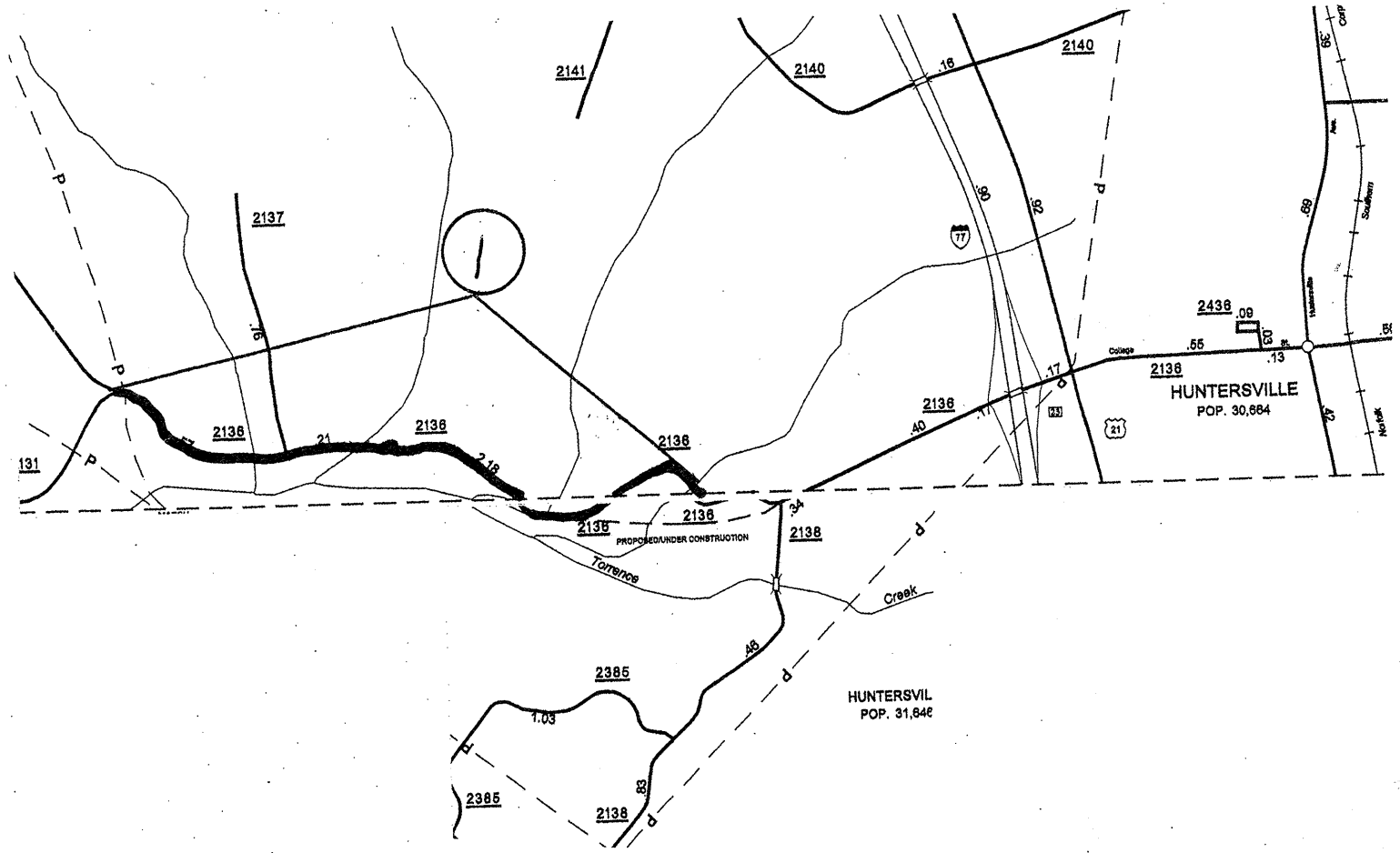


STATE	PROJECT NO.	SHEET NO.	TOTAL SHEETS
N.C.		1	
F.A. PROJECT NO.			



ENLARGED MUNICIPAL AND SUBURBAN AREAS

# MECKLENBURG COUNTY

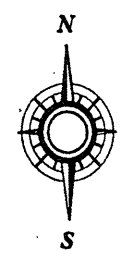
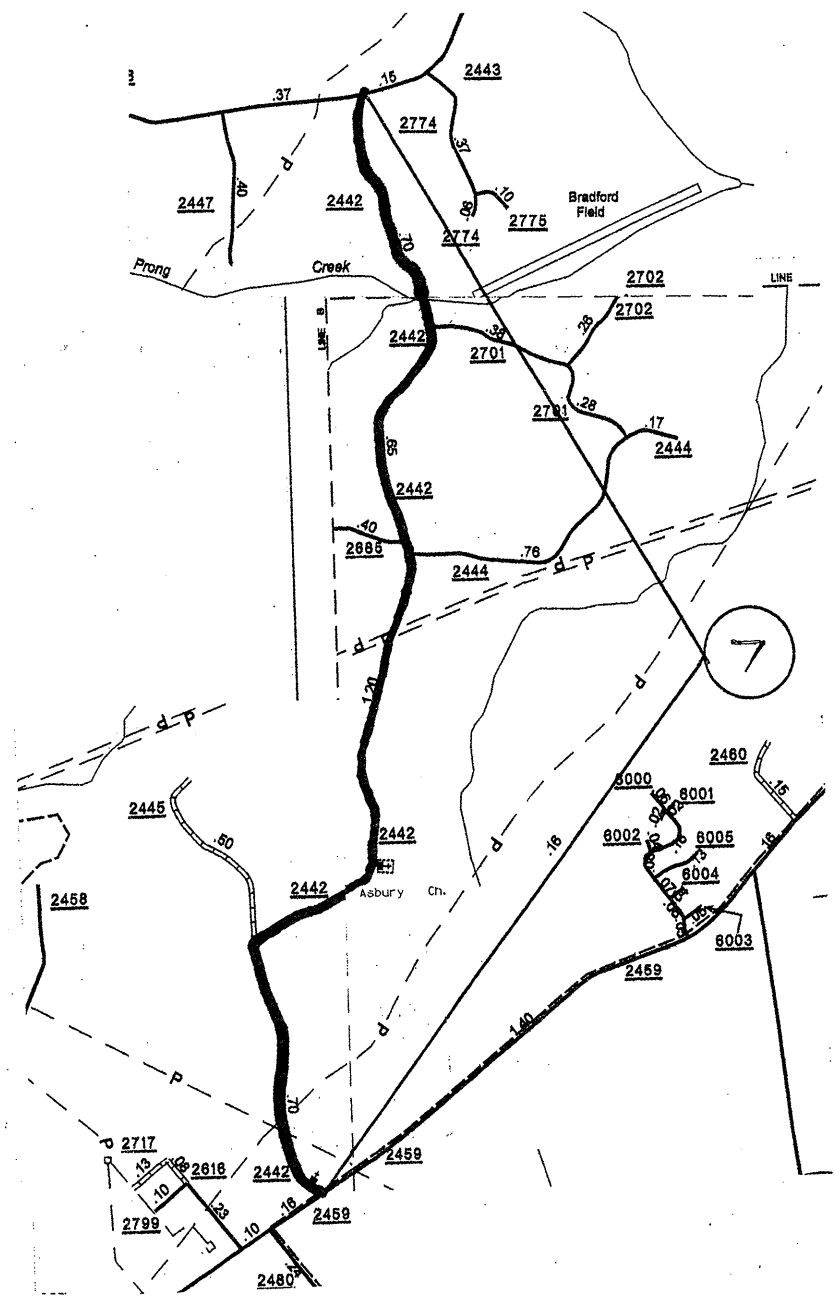
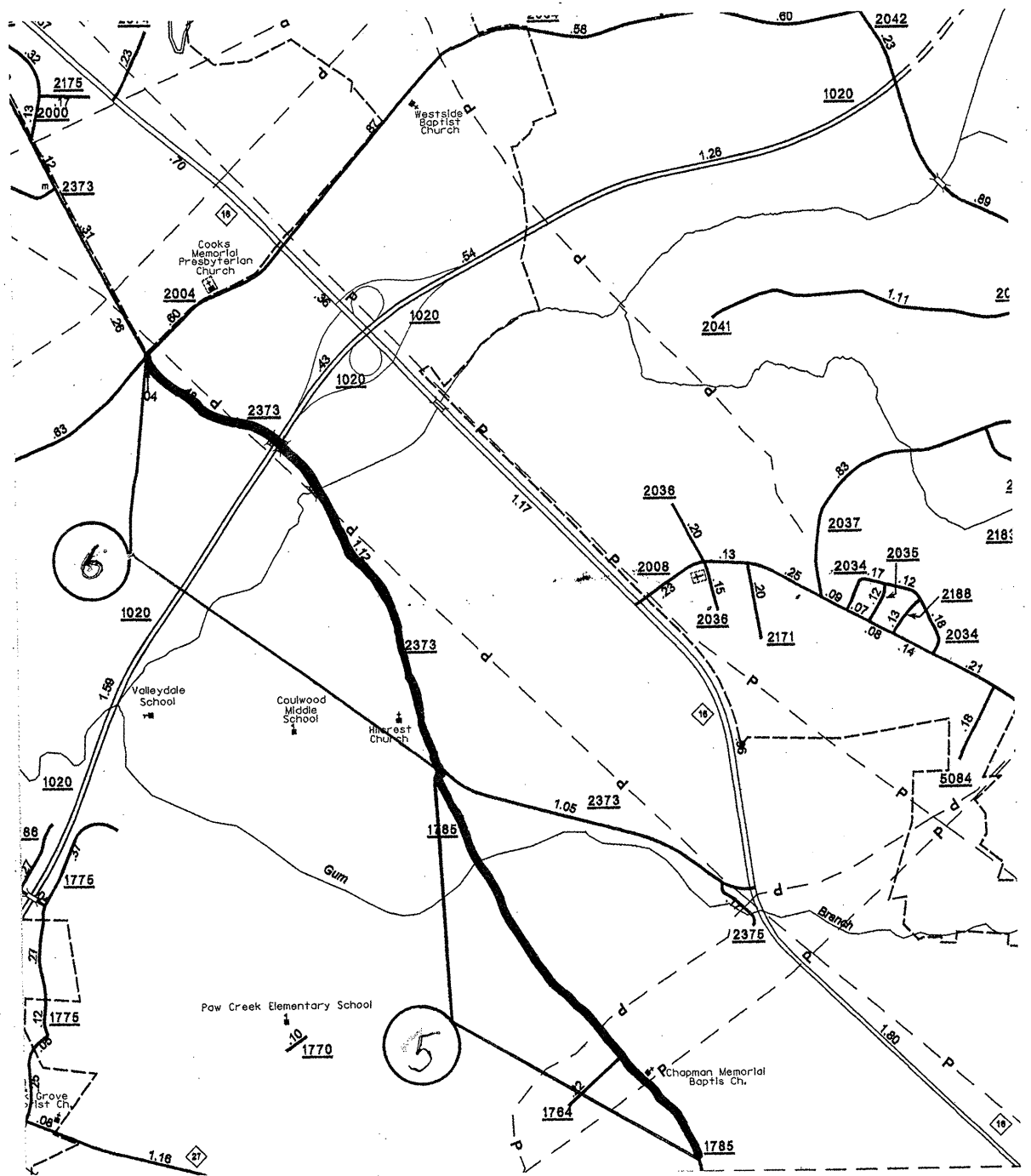
NORTH CAROLINA

PREPARED BY THE  
NORTH CAROLINA DEPARTMENT OF TRANSPORTATION  
DIVISION OF HIGHWAYS - GIS UNIT

IN COOPERATION WITH THE  
U.S. DEPARTMENT OF TRANSPORTATION  
FEDERAL HIGHWAY ADMINISTRATION

MAP #	ROUTE	DESCRIPTION
1	SR 2136 (Gilead Rd)	From Wynfield Creek Rd to Bud Henderson





ENLARGED MUNICIPAL AND SUBURBAN AREAS

# MECKLENBURG COUNTY

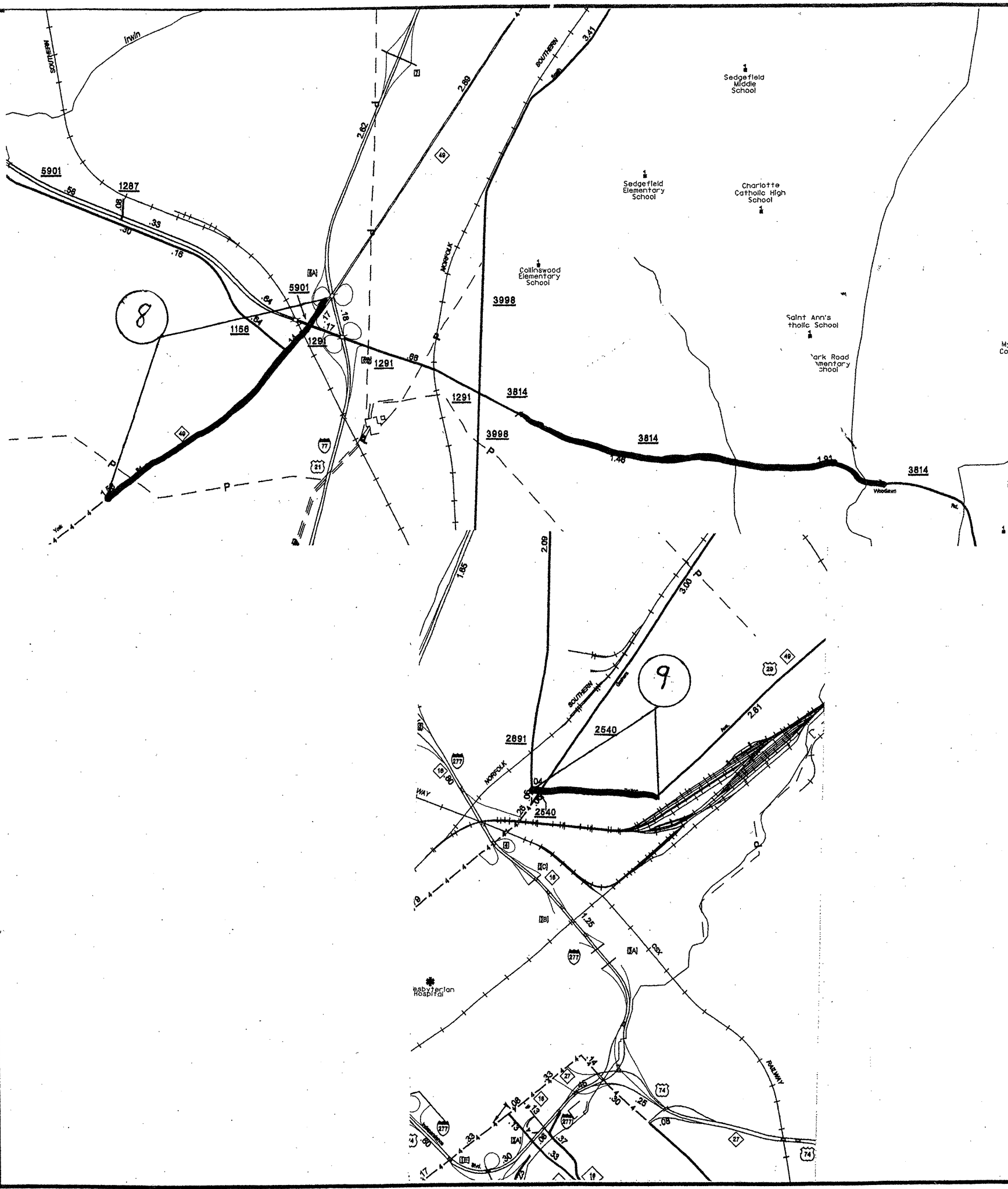
NORTH CAROLINA

PREPARED BY THE  
 NORTH CAROLINA DEPARTMENT OF TRANSPORTATION  
 DIVISION OF HIGHWAYS - GIS UNIT

IN COOPERATION WITH THE  
 U.S. DEPARTMENT OF TRANSPORTATION  
 FEDERAL HIGHWAY ADMINISTRATION

MAP #	ROUTE	DESCRIPTION
5	SR 1785 (Valleydale)	From Homestead Glenn to SR 2373 (Bellhaven Blvd)
6	SR 2373 Bellhaven Blvd	From SR 175 (Valleydale) to SR 2004 (Mt. Holly)
7	SR 2442 (Asbury Chapel)	From SR 2459 (Eastfield) to SR 2448 (Huntersville-Concord)

STATE	PROJECT NO.	SHEET NO.	TOTAL SHEETS
N.C.		4	
F.A. PROJECT NO.			



ENLARGED MUNICIPAL AND SUBURBAN AREAS

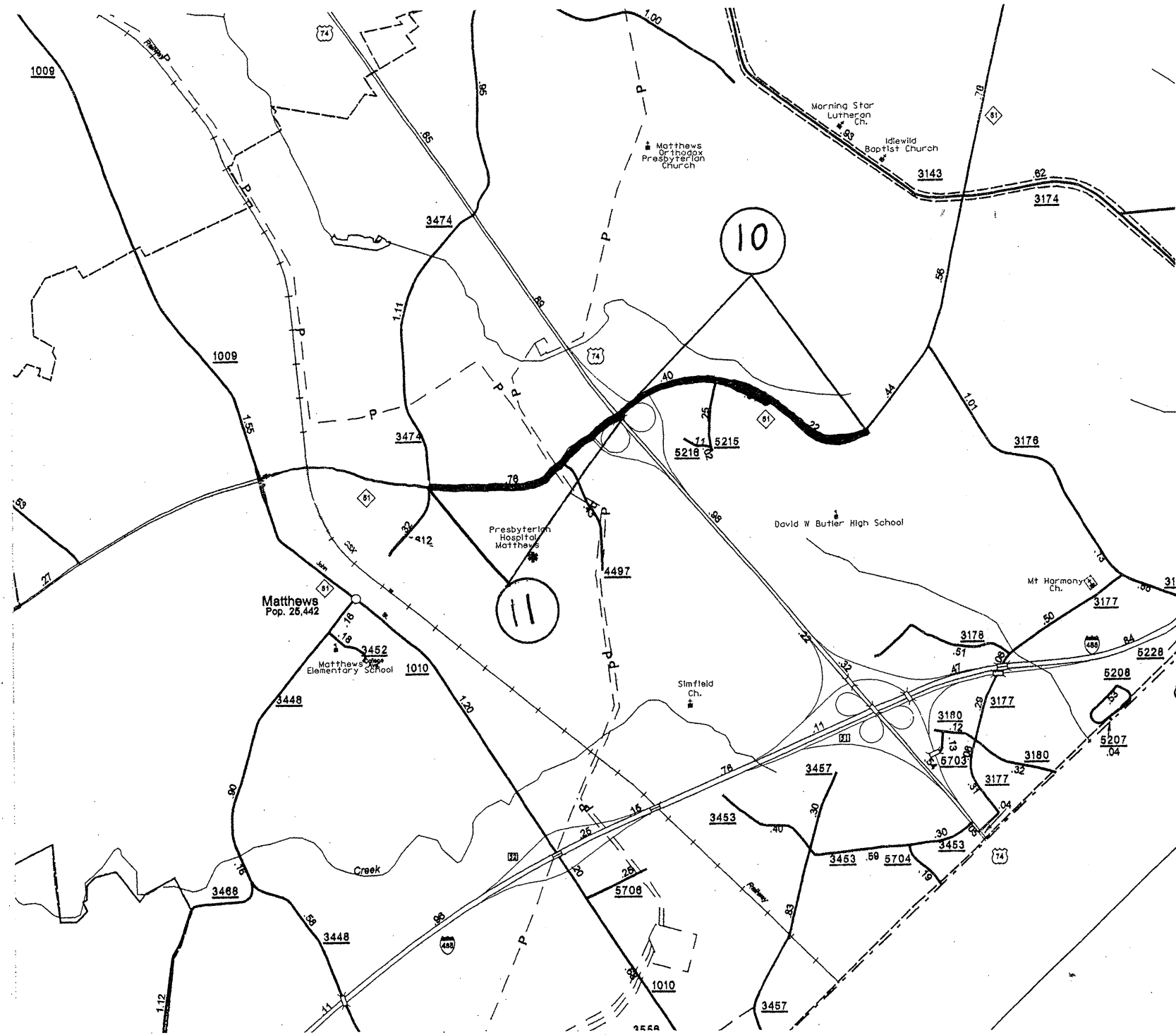
# MECKLENBURG COUNTY

NORTH CAROLINA

PREPARED BY THE  
 NORTH CAROLINA DEPARTMENT OF TRANSPORTATION  
 DIVISION OF HIGHWAYS - GIS UNIT

IN COOPERATION WITH THE  
 U.S. DEPARTMENT OF TRANSPORTATION  
 FEDERAL HIGHWAY ADMINISTRATION

MAP #	ROUTE	DESCRIPTION
8	NC 49	From I-77 Bridge to Tyvola Rd
9	US 29/49	From N. Tryon (NC 29/49) to SR 2691 (Graham St)



ENLARGED MUNICIPAL AND SUBURBAN AREAS

# MECKLENBURG COUNTY

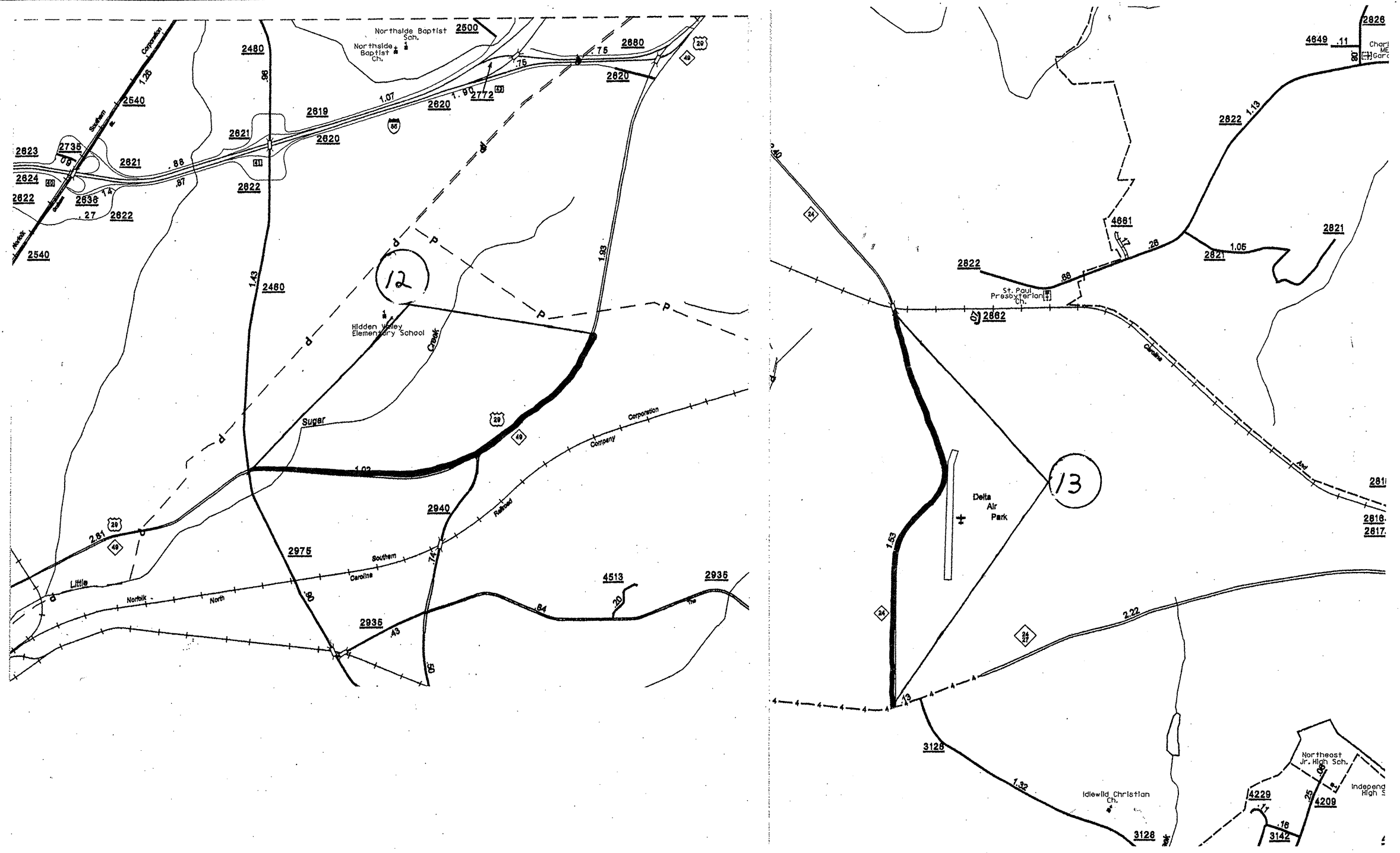
NORTH CAROLINA

PREPARED BY THE  
NORTH CAROLINA DEPARTMENT OF TRANSPORTATION  
DIVISION OF HIGHWAYS - GIS UNIT

IN COOPERATION WITH THE  
U.S. DEPARTMENT OF TRANSPORTATION  
FEDERAL HIGHWAY ADMINISTRATION

MAP #	ROUTE	DESCRIPTION
10	NC 51	From US 74 to Reid Harkey
11	NC 51	From SR 3474 Sam Newell Rd to US 74

STATE	PROJECT NO.	SHEET NO.	TOTAL SHEETS
N.C.		6	
F.A. PROJECT NO.			



ENLARGED MUNICIPAL AND SUBURBAN AREAS

# MECKLENBURG COUNTY

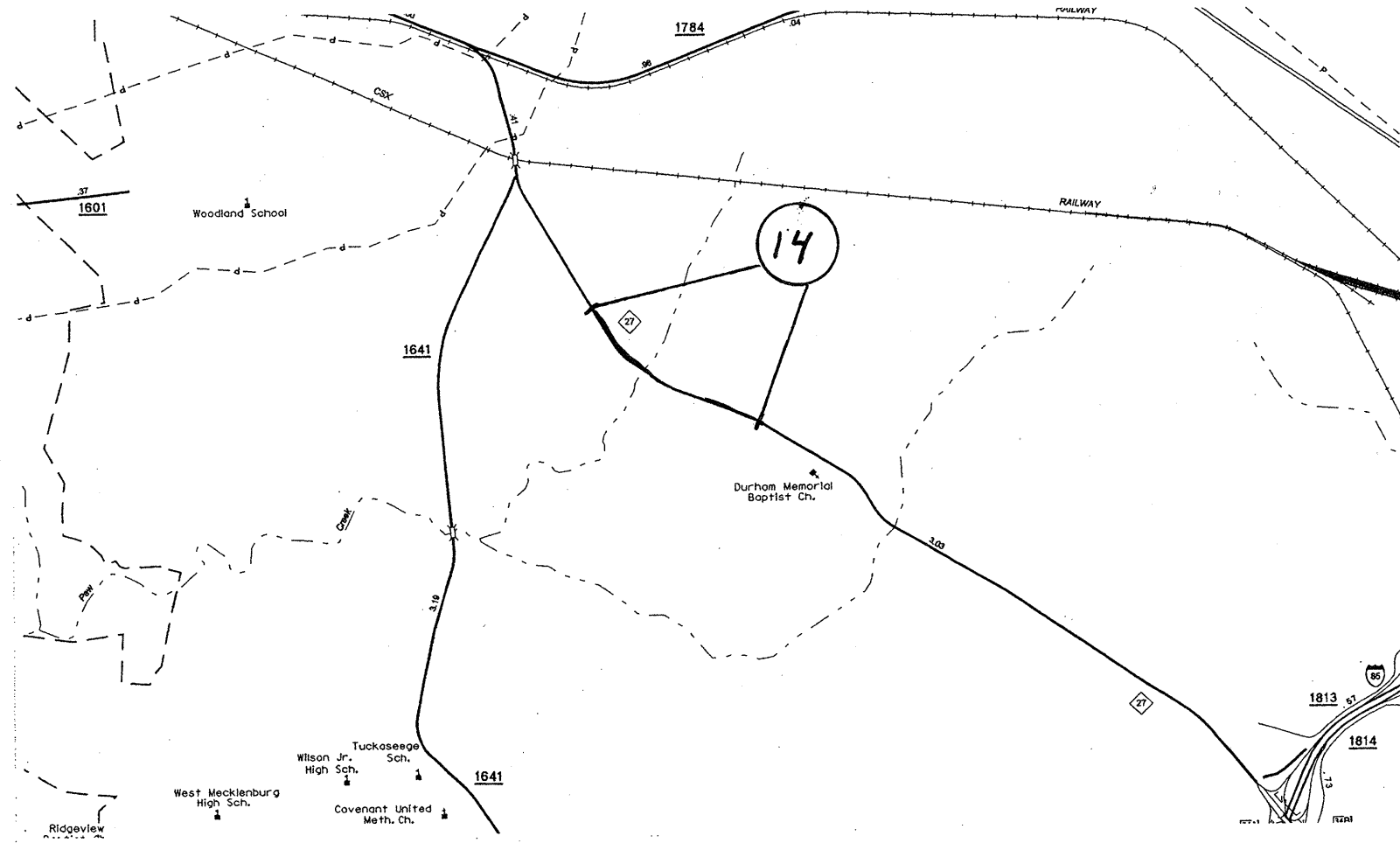
NORTH CAROLINA

PREPARED BY THE  
 NORTH CAROLINA DEPARTMENT OF TRANSPORTATION  
 DIVISION OF HIGHWAYS - GIS UNIT

IN COOPERATION WITH THE  
 U.S. DEPARTMENT OF TRANSPORTATION  
 FEDERAL HIGHWAY ADMINISTRATION

MAP #	ROUTE	DESCRIPTION
12	US 29/49	From SR 2939 (Old Concord) to SR 2480 (Sugar Creek)
13	NC 24	NC 24/27 to R/R Bridge

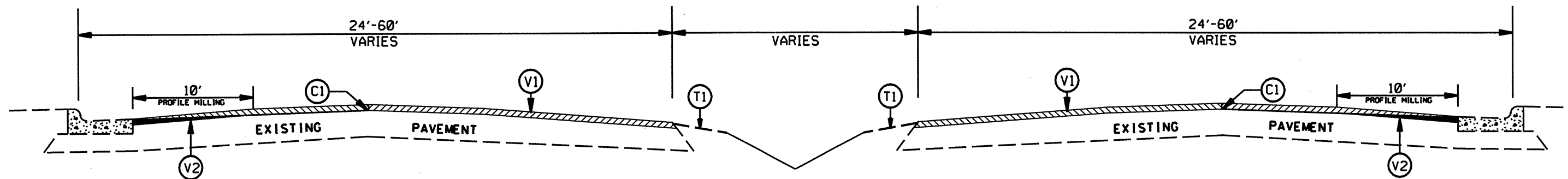
STATE	PROJECT NO.	SHEET NO.	TOTAL SHEETS
N.C.		7	
F.A. PROJECT NO.			



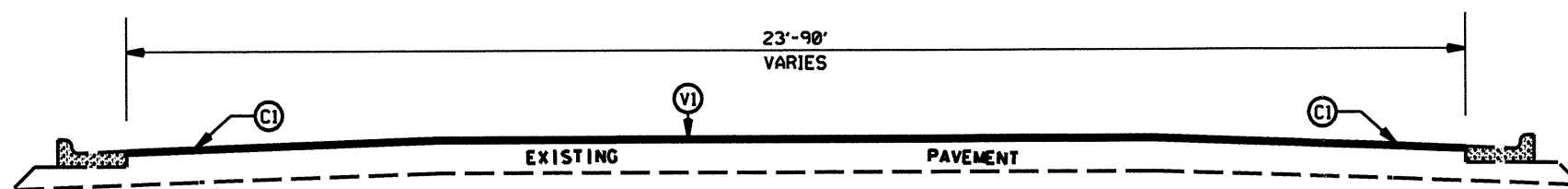
ENLARGED MUNICIPAL AND SUBURBAN AREAS  
**MECKLENBURG COUNTY**  
 NORTH CAROLINA  
 PREPARED BY THE  
 NORTH CAROLINA DEPARTMENT OF TRANSPORTATION  
 DIVISION OF HIGHWAYS - GIS UNIT  
 IN COOPERATION WITH THE  
 U.S. DEPARTMENT OF TRANSPORTATION  
 FEDERAL HIGHWAY ADMINISTRATION

MAP #	ROUTE	DESCRIPTION
14	NC 27 (Freedom Dr)	From 1100' East of Wingate Dr to Toddville Rd

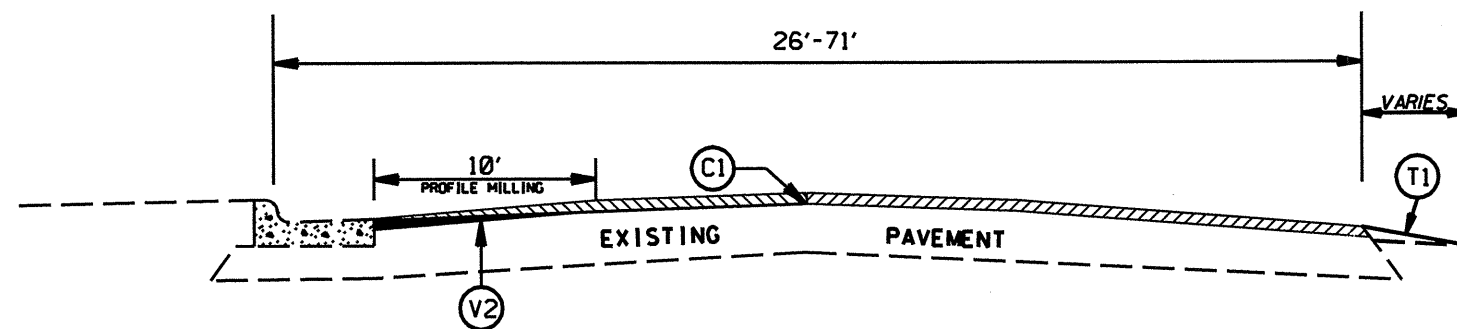
STATE	PROJECT NO.	SHEET NO.	TOTAL SHEETS
N.C.		8	
F.A. PROJECT NO.			



TYPICAL SECTION NO. 3



TYPICAL SECTION NO. 2



TYPICAL SECTION NO. 1

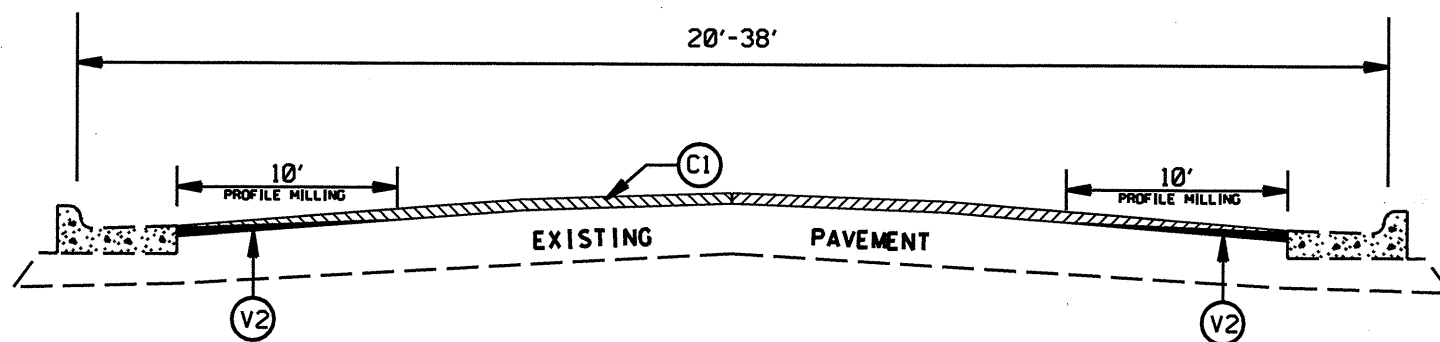
PAVEMENT SCHEDULE	
C1	PROP. APPROX. 1.5" ASPHALT CONCRETE SURFACE COURSE, TYPE S9.5C, AT AN AVERAGE RATE OF 168 LBS. PER SQ. YD.
D1	PROP. APPROX. 2.5" ASPHALT CONCRETE INTERMEDIATE COURSE, TYPE I19.0C, AT AN AVERAGE RATE OF 285 LBS. PER SQ. YD.
E1	PROP. APPROX. 5.5" ASPHALT CONCRETE BASE COURSE, TYPE B25.0C, AT AN AVERAGE RATE OF 627 LBS. PER SQ. YD. IN EACH OF TWO LAYERS
T1	SHOULDER RECONSTRUCTION, LOCATIONS AS DIRECTED BY THE ENGINEER
T2	SHOULDER CONSTRUCTION.
V1	MILLING 1.5" DEPTH
V2	PROFILE MILLING 0" TO 1.5"

2009 MECKLENBURG COUNTY  
RESURFACING

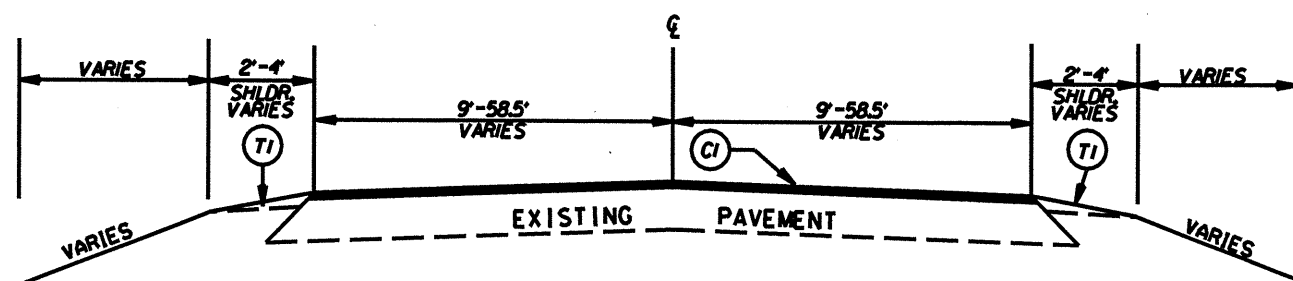
SCALE	-NA-		REVISIONS
DATE	11/08		
OWG. BY	TWB		
DESIGN BY	TWB		
APPROVED	LM		



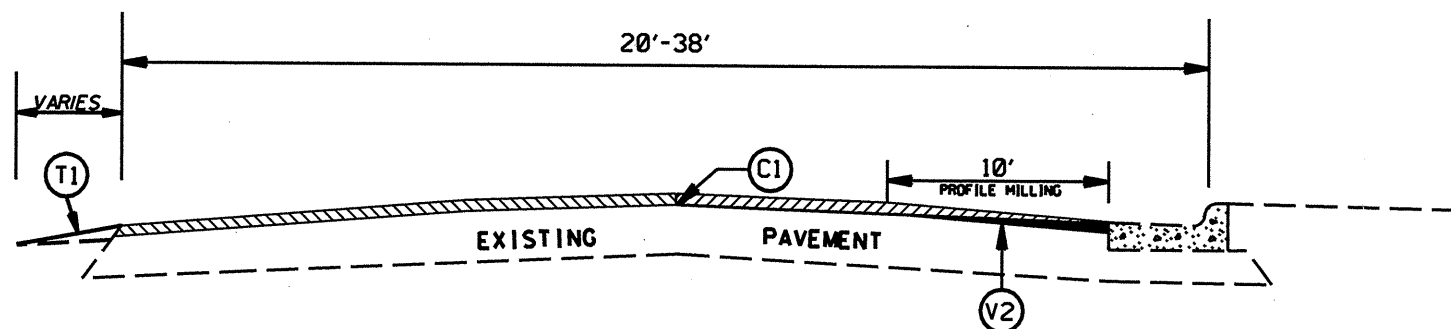
STATE	PROJECT NO.	SHEET NO.	TOTAL SHEETS
N.C.		9	
F.A. PROJECT NO.			



TYPICAL SECTION NO. 6



TYPICAL SECTION NO. 5



TYPICAL SECTION NO. 4

PAVEMENT SCHEDULE	
C1	PROP. APPROX. 1.5" ASPHALT CONCRETE SURFACE COURSE, TYPE S9.5C, AT AN AVERAGE RATE OF 168 LBS. PER SQ. YD.
D1	PROP. APPROX. 2.5" ASPHALT CONCRETE INTERMEDIATE COURSE, TYPE I19.0C, AT AN AVERAGE RATE OF 285 LBS. PER SQ. YD.
E1	PROP. APPROX. 5.5" ASPHALT CONCRETE BASE COURSE, TYPE B25.0C, AT AN AVERAGE RATE OF 627 LBS. PER SQ. YD. IN EACH OF TWO LAYERS
T1	SHOULDER RECONSTRUCTION, LOCATIONS AS DIRECTED BY THE ENGINEER
T2	SHOULDER CONSTRUCTION.
V1	MILLING 1.5" DEPTH
V2	PROFILE MILLING 0" TO 1.5"

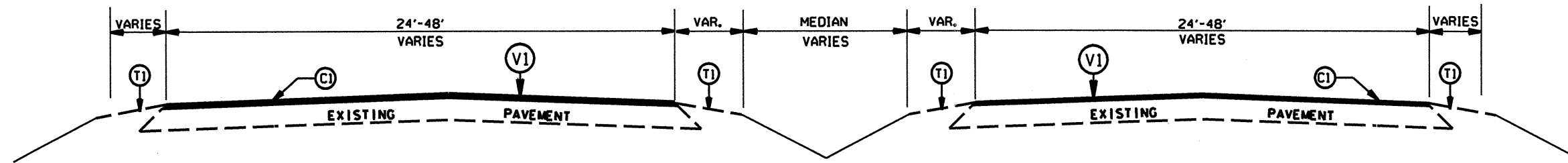
2009 MECKLENBURG COUNTY  
RESURFACING

SCALE -NA-  
DATE 11/08  
DWC. BY TWB  
DESIGN BY TWB  
APPROVED LM

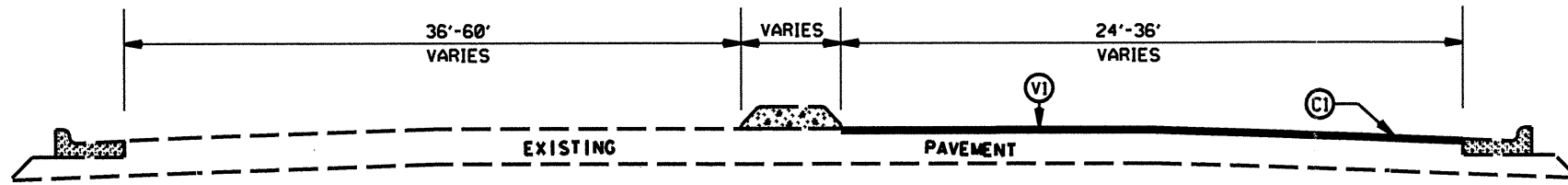


REVISIONS

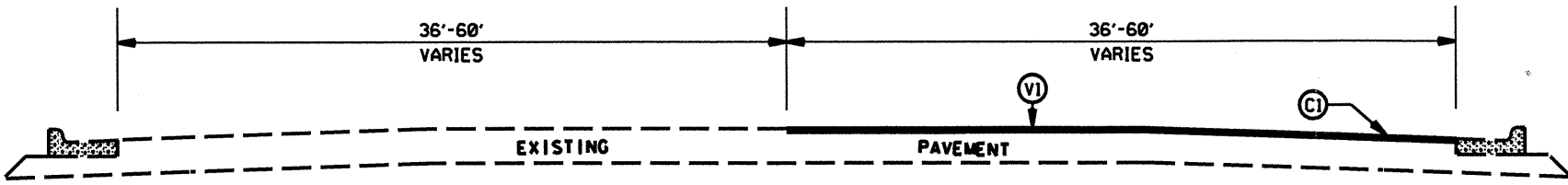

STATE	PROJECT NO.	SHEET NO.	TOTAL SHEETS
N.C.		10	
F.A. PROJECT NO.			



TYPICAL SECTION NO.10

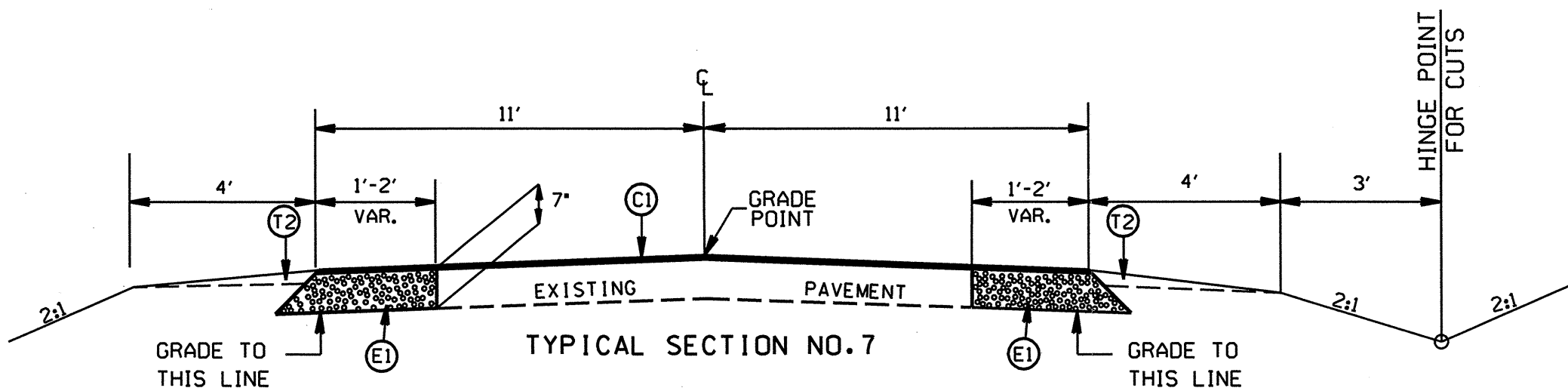


TYPICAL SECTION NO.9



TYPICAL SECTION NO.8

PAVEMENT SCHEDULE	
C1	PROP. APPROX. 1.5" ASPHALT CONCRETE SURFACE COURSE, TYPE S9.5C, AT AN AVERAGE RATE OF 168 LBS. PER SQ. YD.
D1	PROP. APPROX. 2.5" ASPHALT CONCRETE INTERMEDIATE COURSE, TYPE I19.0C, AT AN AVERAGE RATE OF 285 LBS. PER SQ. YD.
E1	PROP. APPROX. 5.5" ASPHALT CONCRETE BASE COURSE, TYPE B25.0C, AT AN AVERAGE RATE OF 627 LBS. PER SQ. YD. IN EACH OF TWO LAYERS
T1	SHOULDER RECONSTRUCTION, LOCATIONS AS DIRECTED BY THE ENGINEER
T2	SHOULDER CONSTRUCTION.
V1	MILLING 1.5" DEPTH
V2	PROFILE MILLING 0" TO 1.5"

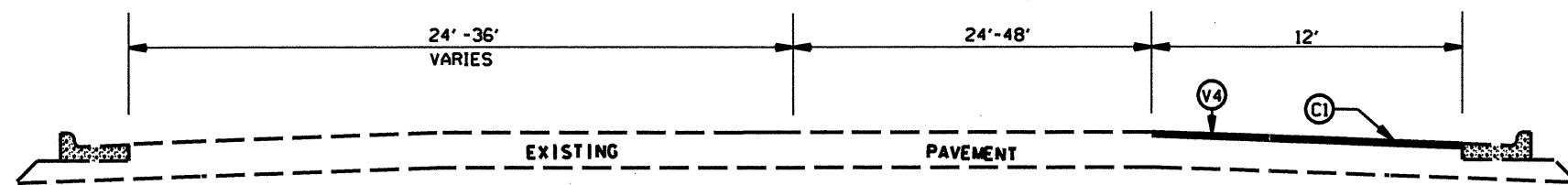


TYPICAL SECTION NO.7

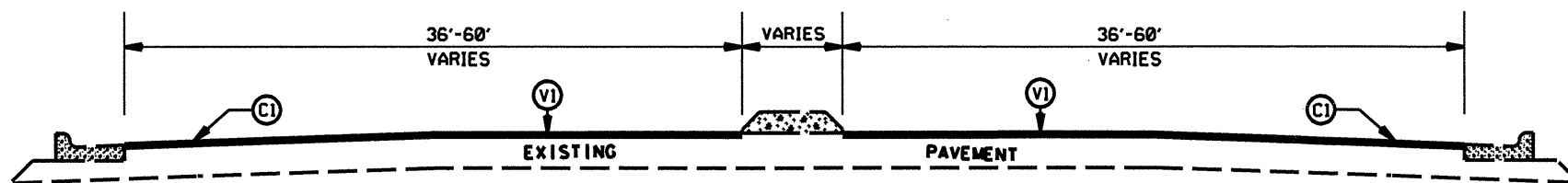
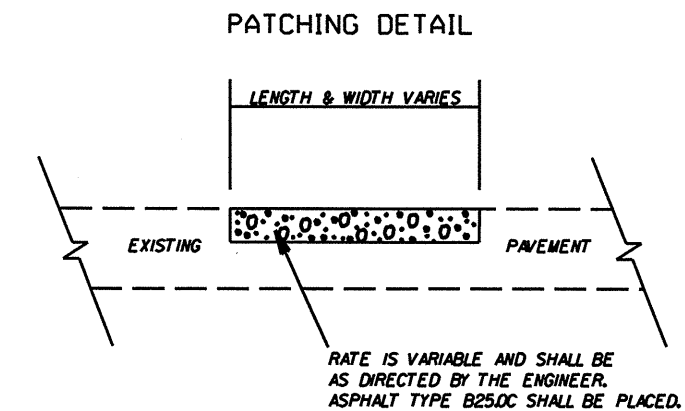
2009 MECKLENBURG COUNTY  
RESURFACING

SCALE	-NA-		REVISIONS
DATE	N/OB		
DWG. BY	TWB		
DESIGN BY	TWB		
APPROVED	LM		

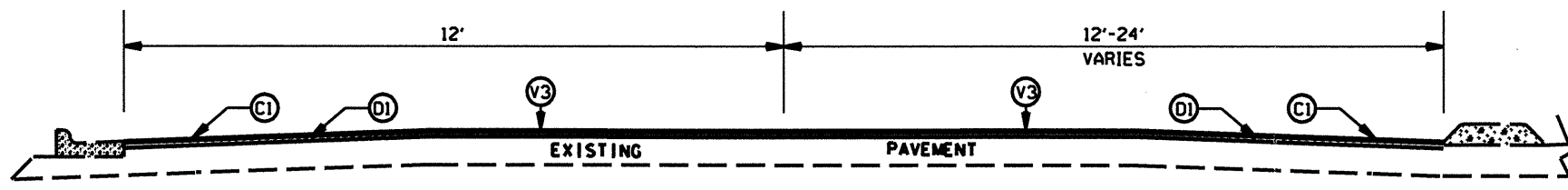
STATE	PROJECT NO.	SHEET NO.	TOTAL SHEETS
N.C.		11	
F.A. PROJECT NO.			



TYPICAL SECTION NO.13



TYPICAL SECTION NO.12



TYPICAL SECTION NO.11

PAVEMENT SCHEDULE	
C1	PROP. APPROX. 1.5" ASPHALT CONCRETE SURFACE COURSE, TYPE S9.5C, AT AN AVERAGE RATE OF 168 LBS. PER SQ. YD.
D1	PROP. APPROX. 2.5" ASPHALT CONCRETE INTERMEDIATE COURSE, TYPE I19.0C, AT AN AVERAGE RATE OF 285 LBS. PER SQ. YD.
T1	SHOULDER RECONSTRUCTION, LOCATIONS AS DIRECTED BY THE ENGINEER
V1	MILLING 1.5" DEPTH
V2	PROFILE MILLING 0" TO 1.5"
V3	MILLING 4" DEPTH
V4	MILLING 1.5" TO 4" DEPTH

2009 MECKLENBURG COUNTY  
RESURFACING

SCALE -NA-  
DATE 11/08  
DWG. BY TWB  
DESIGN BY TWB  
APPROVED LM



REVISIONS

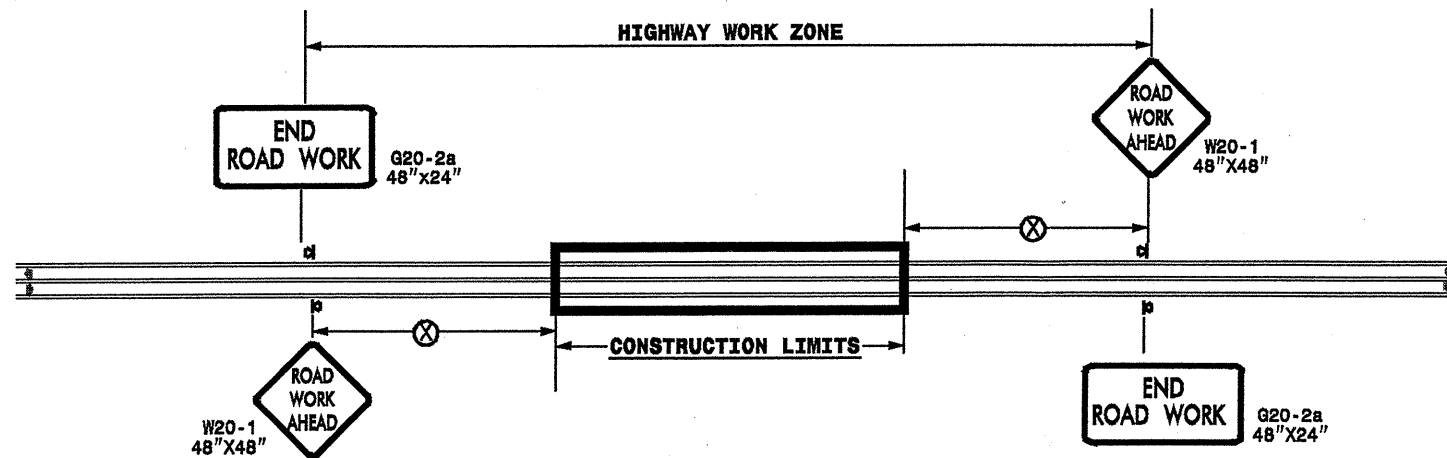

### SUMMARY OF QUANTITIES

PROJECT NO	COUNTY	MAP NO	ROUTE	DESCRIPTION	TYP	FINAL SURFACE TESTING REQUIRED	LENGTH MI	WIDTH FT	UNDER-CUT EXCAVATION CY	BORROW CY	INCIDENTAL STONE BASE TONS	SHOULDER CONSTRUCTION SMI	SHOULDER RECONSTRUCTION SMI	1 1/2" MILLING SY	4" MILLING SY	0" TO 1.5" MILLING SY	1.5" TO 4" MILLING SY	INCIDENTAL MILLING SY	BASE COURSE, B25.0C TONS	INTERMEDIATE COURSE, H19.0C TONS	SURFACE COURSE, S9.5C TONS	LEVELING COURSE, S9.5C TONS	PG 64-22 PLANT MIX TONS	PG 70-22 PLANT MIX TONS	PATCHING EXISTING PAVEMENT TONS	ADJ. OF CATCH BASIN EA	ADJ. OF MAN-HOLES EA	ADJ. OF METER OR VALVE BOX EA	PORTABLE LIGHTING LS	TEMPORARY SILT FENCE LF	SEED & MULCHING AC			
10CR.10601.27	Mecklenburg	13	NC 24 NB AND SB	FROM NC 24/27 TO RR BRIDGE	12	NO	2	55						64,533							5,433			326	1,000		17	5	*					
<b>TOTAL FOR PROJ NO. 10CR.10601.27</b>							<b>2</b>							<b>64,533</b>							<b>5,433</b>			<b>326</b>	<b>1,000</b>		<b>17</b>	<b>5</b>	<b>1</b>					
10CR.10601.23	Mecklenburg	12	US 29/49 (SOUTHBOUND)	FROM SR 2939 (OLD CONCORD RD) TO SR 2480 (SUGAR CREEK RD)	8,9	NO	1.38	45						36,432							3,222			193	840		5	5	*					
<b>TOTAL FOR PROJ NO. 10CR.10601.23</b>							<b>1.38</b>							<b>36,432</b>							<b>3,222</b>			<b>193</b>	<b>840</b>		<b>5</b>	<b>5</b>	<b>1</b>					
10CR.20601.59	Mecklenburg	5	VALLEYDALE (SR 1785)	FROM HOMESTEAD GLENN TO SR 2373 (BELLHAVEN BLVD)	1, 4, 5, 6, 7	NO	1.4	28	300	300	75	0.8	1			4,900		280	622		2,037	735	28	170	735		1	9	*	200	1.0			
<b>TOTAL FOR PROJ NO. 10CR.20601.59</b>							<b>1.4</b>		<b>300</b>	<b>300</b>	<b>75</b>	<b>0.8</b>	<b>1</b>			<b>4,900</b>		<b>280</b>	<b>622</b>		<b>2,037</b>	<b>735</b>	<b>28</b>	<b>170</b>	<b>735</b>		<b>1</b>	<b>9</b>	<b>1</b>	<b>200</b>	<b>1.0</b>			
10CR.20601.61	Mecklenburg	2	MONROE RD (SR 1009)	FROM THERMAL RD TO IDLEWILD RD	2	NO	1.57	60						55,264							4,884			293	840	4	40	15	*					
<b>TOTAL FOR PROJ NO. 10CR.20601.61</b>							<b>1.57</b>		<b>0</b>	<b>0</b>	<b>0</b>	<b>0</b>	<b>0</b>		<b>55,264</b>								<b>4,884</b>			<b>293</b>	<b>840</b>	<b>4</b>	<b>40</b>	<b>15</b>	<b>1</b>			
10CR.20601.62	Mecklenburg	1	GILEAD RD (SR 2136)	FROM WYNFIELD CREEK PKWY TO BUD HENDERSON RD (SR 2131)	4, 5, 6	NO	1.49	24			100		2.54			985		175			1,860	788		163	788				*	200	1.1			
<b>TOTAL FOR PROJ NO. 10CR.20601.62</b>							<b>1.49</b>		<b>0</b>	<b>0</b>	<b>100</b>	<b>0</b>	<b>2.54</b>			<b>985</b>		<b>175</b>					<b>1,860</b>	<b>788</b>		<b>163</b>	<b>788</b>			<b>1</b>	<b>200</b>	<b>1.1</b>		
10CR.20601.63	Mecklenburg	6	BELLHAVEN RD (SR 2373)	FROM VALLETDALE RD (SR 1785) TO MT. HOLLY-HUNTERSVILLE RD (SR 2004)	4, 5, 6	NO	1.6	30			100		2.6			3,500		230			2,494	756		199	756		1	2	*	200	1.2			
<b>TOTAL FOR PROJ NO. 10CR.20601.63</b>							<b>1.6</b>		<b>0</b>	<b>0</b>	<b>100</b>	<b>0</b>	<b>2.6</b>			<b>3,500</b>		<b>230</b>					<b>2,494</b>	<b>756</b>		<b>199</b>	<b>756</b>		<b>1</b>	<b>2</b>	<b>1</b>	<b>200</b>	<b>1.2</b>	
10CR.20601.65	Mecklenburg	4	WILGROVE MINT-HILL RD (SR 5223)	FROM NC 51 TO NC 24/27	1, 2, 5	NO	2.25	22			200		3.6	2,000		900					2,576	1,155		230	1,155		1	2	*	500	1.6			
<b>TOTAL FOR PROJ NO. 10CR.20601.65</b>							<b>2.25</b>		<b>0</b>	<b>0</b>	<b>200</b>	<b>0</b>	<b>3.6</b>	<b>2,000</b>		<b>900</b>								<b>2,576</b>	<b>1,155</b>		<b>230</b>	<b>1,155</b>		<b>1</b>	<b>2</b>	<b>1</b>	<b>500</b>	<b>1.6</b>
10CR.20601.66	Mecklenburg	7	ASBURY CHAPEL RD (SR 2442)	FROM EASTFIELD RD (SR 2459) TO HUNTERSVILLE-CONCORD RD (SR 2448)	5	NO	3.24	22			125		6.5					200			3,709	1,575		325	1,575		1		*	500	2.5			
<b>TOTAL FOR PROJ NO. 10CR.20601.66</b>							<b>3.24</b>		<b>0</b>	<b>0</b>	<b>125</b>	<b>0</b>	<b>6.5</b>							<b>200</b>				<b>3,709</b>	<b>1,575</b>		<b>325</b>	<b>1,575</b>		<b>1</b>		<b>1</b>	<b>500</b>	<b>2.5</b>
10CR.10601.22	Mecklenburg	8	NC 49	FROM I-77 BRIDGE TO TYVOLA RD	2, 12	NO	1.35	56						44,352							3,921			235	1,428		4	4	*					
<b>TOTAL FOR PROJ NO. 10CR.10601.22</b>							<b>1.35</b>		<b>0</b>	<b>0</b>	<b>0</b>	<b>0</b>	<b>0</b>		<b>44,352</b>									<b>3,921</b>			<b>235</b>	<b>1,428</b>		<b>4</b>	<b>4</b>	<b>1</b>		
10CR.10601.24	Mecklenburg	9	US 29/49 DALTON	FROM N. TRYON ST (NC49) TO GRAHAM ST (SR 2691)	2, 12	NO	0.52	50						15,253							1,349			81	263		2	2	*					
<b>TOTAL FOR PROJ NO. 10CR.10601.24</b>							<b>0.52</b>		<b>0</b>	<b>0</b>	<b>0</b>	<b>0</b>	<b>0</b>		<b>15,253</b>									<b>1,349</b>			<b>81</b>	<b>263</b>		<b>2</b>	<b>2</b>	<b>1</b>		
10CR.10601.25	Mecklenburg	10	NC 51	FROM INDEPENDENCE BLVD (US 74) TO REID HARKEY	2, 10	NO	1.18	72					0.15	49,843							4,404			264	1,050		4	3	*					
<b>TOTAL FOR PROJ NO. 10CR.10601.25</b>							<b>1.18</b>		<b>0</b>	<b>0</b>	<b>0</b>	<b>0</b>	<b>0.15</b>	<b>49,843</b>										<b>4,404</b>			<b>264</b>	<b>1,050</b>		<b>4</b>	<b>3</b>	<b>1</b>		
10CR.10601.26	Mecklenburg	11	NC 51 NORTHBOUND	FROM SAM NEWELL RD (SR 3474) TO INDEPENDENCE BLVD (US 74)	11	NO	1	25							14,667						2,213	1,300	104	78			6	5	*					
<b>TOTAL FOR PROJ NO. 10CR.10601.26</b>							<b>1</b>		<b>0</b>	<b>0</b>	<b>0</b>	<b>0</b>	<b>0</b>		<b>14,667</b>									<b>2,213</b>	<b>1,300</b>	<b>104</b>	<b>78</b>		<b>6</b>	<b>5</b>	<b>1</b>			
10CR.10601.28	Mecklenburg	3	NC 24/27 EASTBOUND	FROM .4 MILES WEST OF WILGROVE MINTHILL RD (SR 5223) TO WILGROVE MINTHILL RD (SR 5223)	9	NO	0.4	28						6,571							554			33	300		2	1	*					
<b>TOTAL FOR PROJ NO. 10CR.10601.28</b>							<b>0.4</b>		<b>0</b>	<b>0</b>	<b>0</b>	<b>0</b>	<b>0</b>		<b>6,571</b>									<b>554</b>			<b>33</b>	<b>300</b>		<b>2</b>	<b>1</b>	<b>1</b>		
10CR.10601.29	Mecklenburg	14	NC 27	FROM TODDVILLE DRIVE TO 1100' EAST OF WINGATE DRIVE	13, 5	NO	0.9	30					1.6				1,250				1,762			106	500		2	4	*					
<b>TOTAL FOR PROJ NO. 10CR.10601.29</b>							<b>0.9</b>		<b>0</b>	<b>0</b>	<b>0</b>	<b>0</b>	<b>1.6</b>				<b>1,250</b>							<b>1,762</b>			<b>106</b>	<b>500</b>		<b>2</b>	<b>4</b>	<b>1</b>		
<b>GRAND TOTAL</b>							<b>20.28</b>		<b>300</b>	<b>300</b>	<b>600</b>	<b>0.8</b>	<b>17.99</b>	<b>274,248</b>	<b>14,667</b>	<b>10,285</b>	<b>1,250</b>	<b>885</b>	<b>622</b>	<b>2,213</b>	<b>39,505</b>	<b>5,009</b>	<b>132</b>	<b>2,696</b>	<b>11,230</b>	<b>4</b>	<b>86</b>	<b>57</b>	<b>1</b>	<b>1,600</b>	<b>7.4</b>			

## THERMOPLASTIC AND PAINT QUANTITIES

PROJECT NO	COUNTY	MAP NO	ROUTE	DESCRIPTION	4589000000-N	4685000000-E		4686000000-E		4695000000-E		4697000000-E		4710000000-E	4721000000-E		4725000000-E			4810000000-E		4835000000-E		4900000000-N		4905000000-N
					TRAFFIC CONTROL	4" X 90 M YELLOW THERMO	4" X 90 M WHITE THERMO	4" X 120 M WHITE THERMO	4" X 120 M YELLOW THERMO	8" X 90 M YELLOW THERMO	8" X 90 M WHITE THERMO	8" X 120 M WHITE THERMO	8" X 120 M YELLOW THERMO	24" X 120 M WHITE THERMO	THERMO MSG SCHOOL 120 M EA	THERMO MSG ONLY 120 M EA	THERMO LT ARROW 90 M EA	THERMO RT ARROW 90 M EA	MERGE ARROW EA	THERMO STR ARROW 90 M EA	4" WHITE PAINT	4" YELLOW PAINT	24" WHITE PAINT	CYAN & RED MARKERS EA	YELLOW & YELLOW MARKERS EA	SNOW PLOWABLE MARKERS EA
NO		NO			LS	LF	LF	LF	LF	LF	LF	LF	LF	LF	EA	EA	EA	EA	EA	EA	EA	EA	EA	EA	EA	EA
10CR.10601.27	Mecklenburg	13	NC 24 NB AND SB	FROM NC 24/27 TO RR BRIDGE	*	18,550		13,000				200		190	12	8	49	5		13,000		90	100		264	
<b>TOTAL FOR PROJ NO. 10CR.10601.27</b>					1	18,550		13,000				200		190	12	8	49	5		13,000		90	100		264	
						18,550		13,000				200		190	20		54			13,000			100			
10CR.10601.23	Mecklenburg	12	US 29/49 (SOUTHBOUND)	FROM SR 2939 (OLD CONCORD RD) TO SR 2480 (SUGAR CREEK RD)	*			4,900	14,800	150		100		82			50	13	3		4,900	14,600				
<b>TOTAL FOR PROJ NO. 10CR.10601.23</b>					1			4,900	14,800	150		100		82			50	13	3		4,900	14,600				
								19,700		150		100		82			66				19,500					
10CR.20601.59	Mecklenburg	5	VALLEYDALE (SR 1785)	FROM HOMESTEAD GLENN TO SR 2373 (BELLHAVEN BLVD)	*		11,000	150	14,800					45			3				14,800	45	15	185		
<b>TOTAL FOR PROJ NO. 10CR.20601.59</b>					1		11,000	150	14,800					45			3				14,800	45	15	185		
							11,000	14,950						45			3				14,800		200			
10CR.20601.61	Mecklenburg	2	MONROE RD (SR 1009)	FROM THERMAL RD TO IDLEWILD RD	*			7,000	33,200					665	24		20	5			7,000		465	440	420	
<b>TOTAL FOR PROJ NO. 10CR.20601.61</b>					1			7,000	33,200					665	24		20	5			7,000		465	440	420	
								40,200						665	24		25				7,000		860			
10CR.20601.62	Mecklenburg	1	GILEAD RD (SR 2136)	FROM WYNFIELD CREEK PKWY TO BUD HENDERSON RD (SR 2131)	*		15,825	200	16,625	125							2				15,625		10	200		
<b>TOTAL FOR PROJ NO. 10CR.20601.62</b>					1		15,825	200	16,625	125							2				15,625		10	200		
							15,825	16,825	125								2				15,625		210			
10CR.20601.63	Mecklenburg	6	BELLHAVEN RD (SR 2373)	FROM VALLEDALE RD (SR 1785) TO MT. HOLLY-HUNTERSVILLE RD (SR 2004)	*		10,500		17,500	120		1,800		26			19				17,500		30	215		
<b>TOTAL FOR PROJ NO. 10CR.20601.63</b>					1		10,500		17,500	120		1,800		26			19				17,500		30	215		
							10,500		17,500	120		1,800		26			19				17,500		245			
10CR.20601.65	Mecklenburg	4	WILGROVE MINT-HILL RD (SR 5223)	FROM NC 51 TO NC 24/27	*		24,210		44,000	30				110			10	8		2	24,000	106	30	300		
<b>TOTAL FOR PROJ NO. 10CR.20601.65</b>					1		24,210		44,000	30				110			10	8		2	24,000	106	30	300		
							24,210		44,000	30				110			20				24,000		330			
10CR.20601.66	Mecklenburg	7	ASBURY CHAPEL RD (SR 2442)	FROM EASTFIELD RD (SR 2459) TO HUNTERSVILLE CONCORD RD (SR 2448)	*		34,900	150	34,000					24							34,000		15	430		
<b>TOTAL FOR PROJ NO. 10CR.20601.66</b>					1		34,900	150	34,000					24							34,000		15	430		
							34,900	34,150						24							34,000		445			
10CR.10601.22	Mecklenburg	8	NC 49	FROM I-77 BRIDGE TO TYVOLA RD	*	12,400		5,000				130		220			15	3			5,000		220	385		
<b>TOTAL FOR PROJ NO. 10CR.10601.22</b>					1	12,400		5,000				130		220			15	3			5,000		220	385		
						12,400		5,000				130		220			18				5,000		385			
10CR.10601.24	Mecklenburg	9	US 29/49 DALTON	FROM N. TRYON ST (NC49) TO GRAHAM ST (SR 2691)	*			1,525	7,000	50	145	300		66			6	3			1,525		140	76		
<b>TOTAL FOR PROJ NO. 10CR.10601.24</b>					1			1,525	7,000	50	145	300		66			6	3			1,525		140	76		
								8,525		195		300		66			9				1,525		216			
10CR.10601.25	Mecklenburg	10	NC51	FROM INDEPENDENCE BLVD (US 74) TO REID HARKEY	*	12,500	5,330	9,200		300				144		8	19	12	2	7	9,200		144	325		
<b>TOTAL FOR PROJ NO. 10CR.10601.25</b>					1	12,500	5,330	9,200		300				144		8	19	12	2	7	9,200		144	325		
						17,830		9,200		300				144		8	40				9,200		325			
10CR.10601.26	Mecklenburg	11	NC 51 NORTHBOUND OUTSIDE LANEATIONS	FROM SAM NEWELL RD (SR 3474) TO INDEPENDENCE BLVD (US 74)	*			2,000						48							1,320		12	135		
<b>TOTAL FOR PROJ NO. 10CR.10601.26</b>					1			2,000						48							1,320		12	135		
								2,000						48							1,320		135			
10CR.10601.28	Mecklenburg	3	NC 24/27 EASTBOUND	FROM .4 MILES WEST OF WILGROVE MINTHILL RD (SR 5223) TO WILGROVE MINTHILL RD (SR 5223)	*	2,200		600						30							600		30	60		
<b>TOTAL FOR PROJ NO. 10CR.10601.28</b>					1	2,200		600						30							600		30	60		
						2,200		600						30							600		60			
10CR.10601.29	Mecklenburg	14	NC 27	FROM TODDVILLE DRIVE TO 1100' EAST OF WINGATE DRIVE	*		7,000	1,000		2,000			19,000	72			3	3			5,000		30	120		
<b>TOTAL FOR PROJ NO. 10CR.10601.29</b>					1		7,000	1,000		2,000			19,000	72			3	3			5,000		30	120		
							7,000	1,000		2,000			19,000	72			6				5,000		150			
<b>GRAND TOTAL</b>					1	45,650	108,765	44,725	181,925	2,775	145	2,530	19,000	1,722	36	16	196	52	5	9	42,545	125,525	1,112	1,715	1,946	264
						154,415		226,650		2,920		21,530		52		262					168,070		3,661			

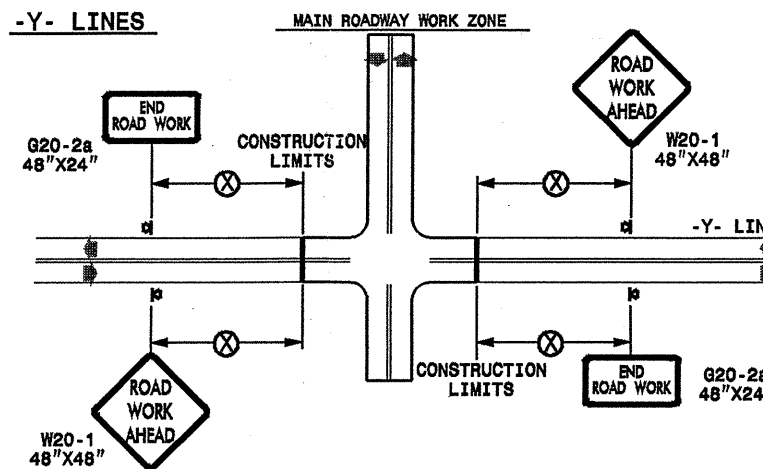
**TWO-WAY UNDIVIDED \*\* (L-LINES)**



POSTED SPEED LIMIT (M.P.H.)	RECOMMENDED MINIMUM SIGN SPACING
≤ 50	500'
≥ 55	1000'

STATE OF NORTH CAROLINA  
DEPT. OF TRANSPORTATION  
DIVISION OF HIGHWAYS  
RALEIGH, N.C.

**ROADWAYS INTERSECTING ALONG 2 WAY UNDIVIDED WORK ZONE (Y-LINES)**



**GENERAL NOTES**

- USE FLUORESCENT ORANGE SHEETING (TYPE VII OR HIGHER) ON ALL ADVANCE WORK ZONE SIGNS.
- DO NOT INSTALL ADVANCE WARNING SIGNS MORE THAN 3 DAYS PRIOR TO BEGINNING OF WORK.
- ALL SIGN SPACING DIMENSIONS ARE APPROXIMATE, FIELD ADJUST AS NECESSARY OR AS DIRECTED.
- USE PORTABLE WORK ZONE SIGNS ONLY WITH PORTABLE WORK ZONE SIGN STANDS SPECIFICALLY DESIGNED FOR ONE ANOTHER. PORTABLE WORK ZONE SIGNS MAY BE ROLL UP OR APPROVED COMPOSITE.
- PROVIDE PORTABLE WORK ZONE SIGN STANDS, PORTABLE SIGNS AND SIGN SHEETING WHICH ARE LISTED ON THE NORTH CAROLINA DEPARTMENT OF TRANSPORTATION'S APPROVED PRODUCT LIST OR ACCEPTED AS TRAFFIC QUALIFIED BY THE TRAFFIC CONTROL UNIT.
- \*\* TWO-WAY UNDIVIDED ADVANCE WARNING SIGN CONFIGURATION MAY BE USED ON URBAN MULTI-LANE FACILITIES WHERE CONDITIONS LIMIT THE USE OF DUAL MOUNTED SIGNS AS DETERMINED BY THE ENGINEER.

LEGEND	
	PORTABLE SIGN
	DIRECTION OF TRAFFIC FLOW

SHEET 1 OF 1

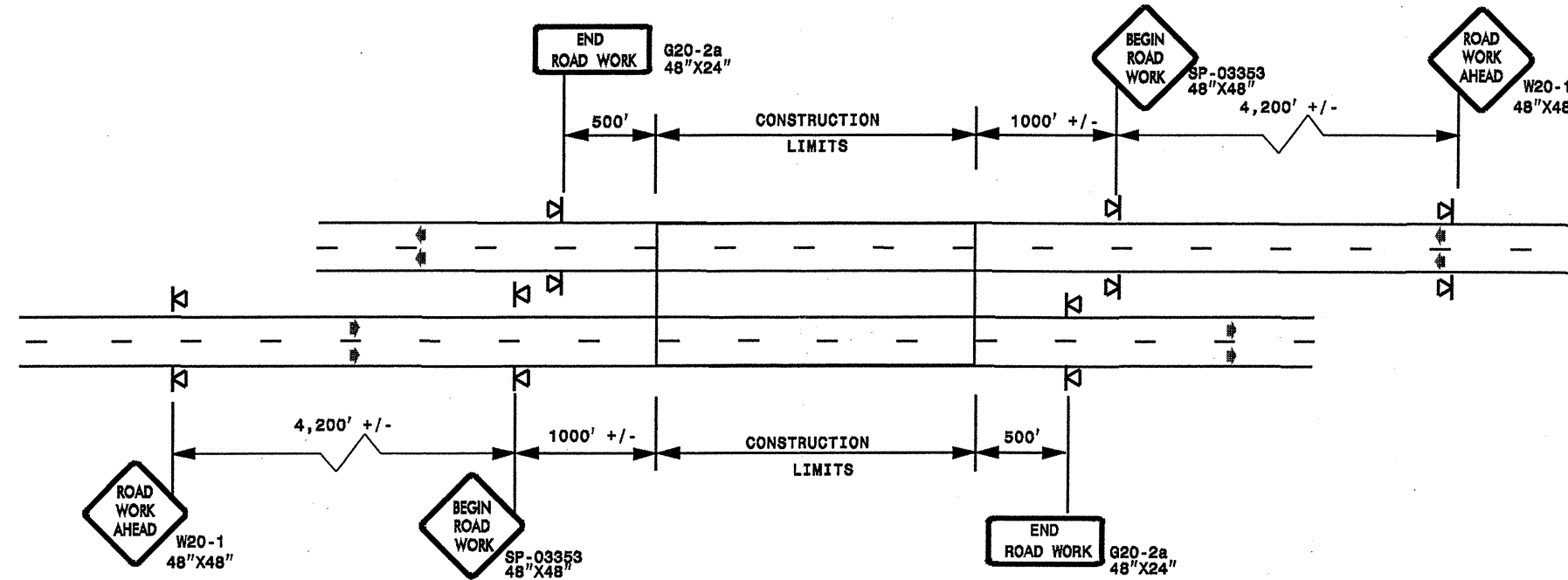
DETAIL DRAWING  
FOR TWO-WAY UNDIVIDED  
WORK ZONE WARNING SIGNS

APPROVED: _____ DATE: _____	DETAIL DRAWING FOR TWO-WAY UNDIVIDED ADVANCED WORK ZONE WARNING SIGNS		SCALE: NONE	REVISIONS
SEAL			DATE: 7-98	10/01
			DWD. BY:	10-98 03/04
			DESIGN BY:	01/01 11/04
			REVIEWED BY:	DATE:

04-MAY-2009 18:49  
 st.singh\resur\facimg\_010509\resur\facimg\_010509.dwg  
 10cr1060122x14\_mecklenbur\_q.us299etv\_c202245\_10cr1060122x14\_2wayundivurbtrwysjuly2006.por-table.dgn  
 psey@ncdot.gov

**ADVANCE WORK ZONE WARNING SIGNING FOR FREEWAYS (4 LANES OR GREATER)**

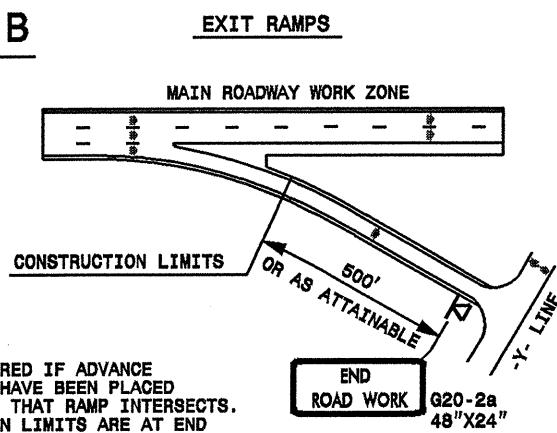
**DETAIL A**



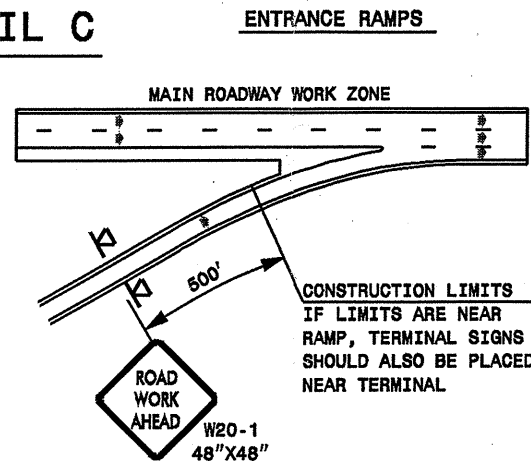
STATE OF NORTH CAROLINA  
DEPT. OF TRANSPORTATION  
DIVISION OF HIGHWAYS  
RALEIGH, N.C.

**ROADWAYS INTERSECTING ALONG FREEWAY WORK ZONE (Y-LINES)**

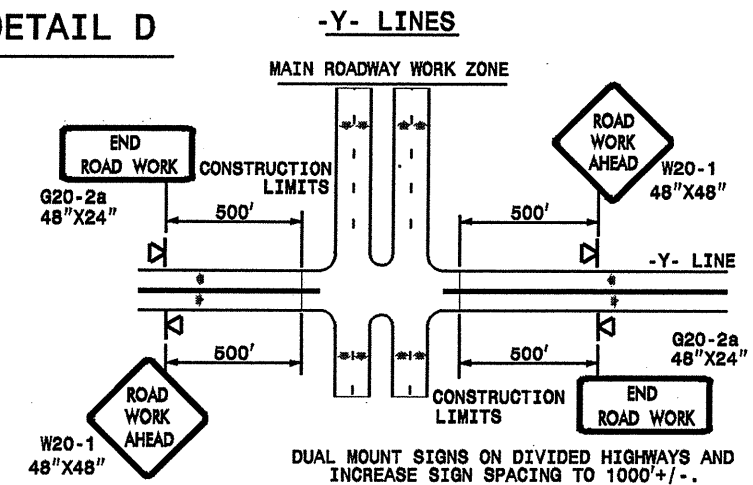
**DETAIL B**



**DETAIL C**



**DETAIL D**



**DETAIL DRAWING FOR FREEWAYS WORK ZONE WARNING SIGNS (SHORT-DURATION LANE CLOSURES)**

**GENERAL NOTES**

- USE FLUORESCENT ORANGE SHEETING (TYPE VII OR HIGHER) ON ALL ADVANCE WORK ZONE SIGNS.
- DO NOT INSTALL ADVANCE WARNING SIGNS MORE THAN 3 DAYS PRIOR TO BEGINNING OF WORK.
- ALL SIGN SPACING DIMENSIONS ARE APPROXIMATE, FIELD ADJUST AS NECESSARY OR AS DIRECTED.
- USE PORTABLE WORK ZONE SIGNS ONLY WITH PORTABLE WORK ZONE SIGN STANDS SPECIFICALLY DESIGNED FOR ONE ANOTHER. PORTABLE WORK ZONE SIGNS MAY BE ROLL UP OR APPROVED COMPOSITE.
- PROVIDE PORTABLE WORK ZONE SIGN STANDS, PORTABLE SIGNS AND SIGN SHEETING WHICH ARE LISTED ON THE NORTH CAROLINA DEPARTMENT OF TRANSPORTATION'S APPROVED PRODUCT LIST OR ACCEPTED AS TRAFFIC QUALIFIED BY THE TRAFFIC CONTROL UNIT.
- \*\* TWO-WAY UNDIVIDED ADVANCE WARNING SIGN CONFIGURATION MAY BE USED ON MULTI-LANE FACILITIES WHERE CONDITIONS LIMIT THE USE OF DUAL MOUNTED SIGNS AS DETERMINED BY THE ENGINEER.

**LEGEND**

▶ PORTABLE SIGN

◀ DIRECTION OF TRAFFIC FLOW

SHEET 1 OF 1

APPROVED: \_\_\_\_\_ DATE: \_\_\_\_\_

SEAL

**DETAIL DRAWING FOR FREEWAYS WORK ZONE WARNING SIGNS**

SCALE: NONE

DATE: \_\_\_\_\_

DWG. BY: \_\_\_\_\_

DESIGN BY: \_\_\_\_\_

REVIEWED BY: \_\_\_\_\_

REVISIONS	
7-98	10/01
10-98	03/04
01/01	11/04

04-MAY-2009 15:03 s:\signing\resur\facimg\_030509\resur\facimg2009\div0\c202245\_10cr1080122x14\_freelanesgreat\july2006\_portable.dgn