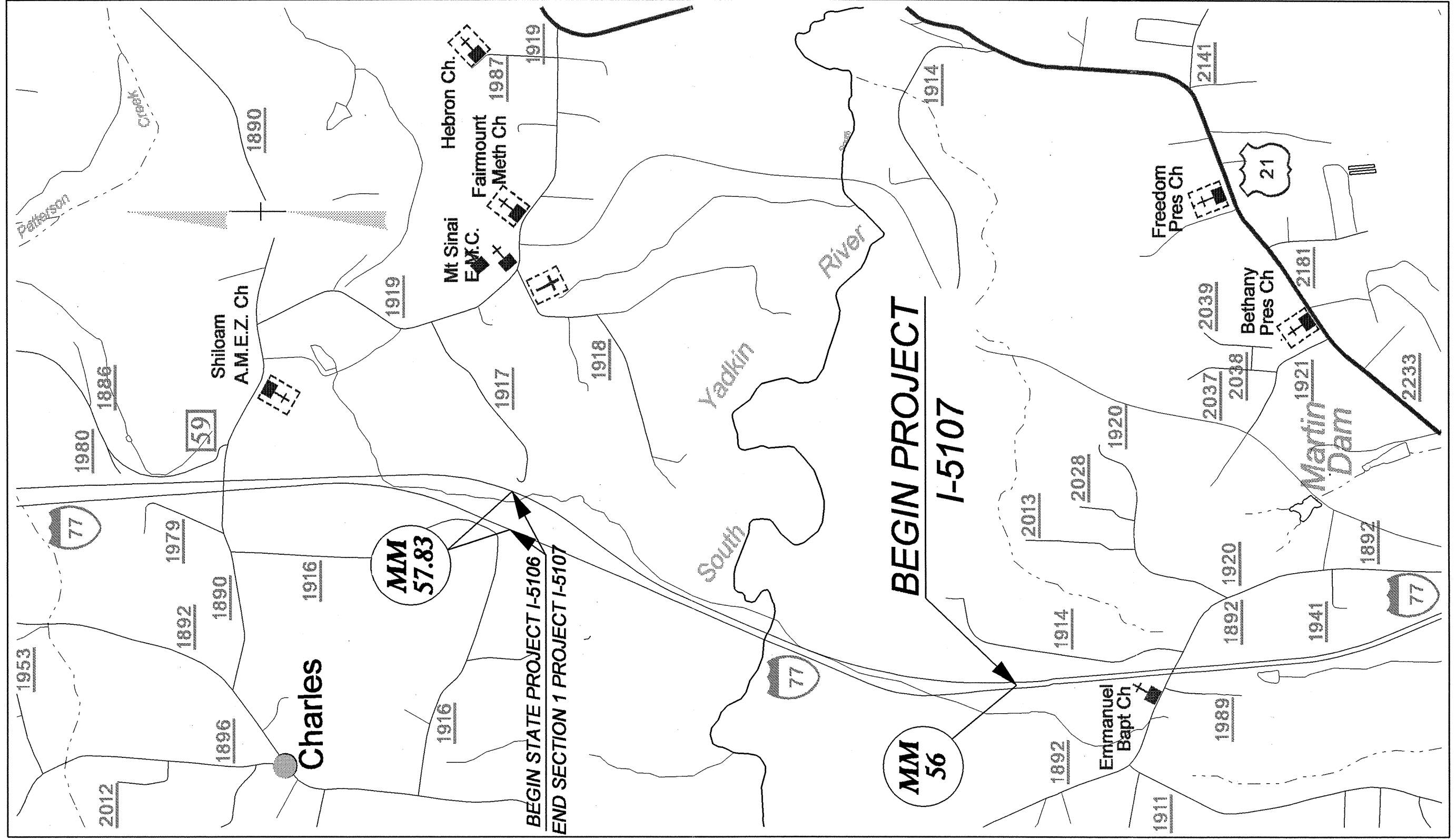


PROJECT I-5107 IREDELL COUNTY MILE MARKER 56 to MILE MARKER 57.83

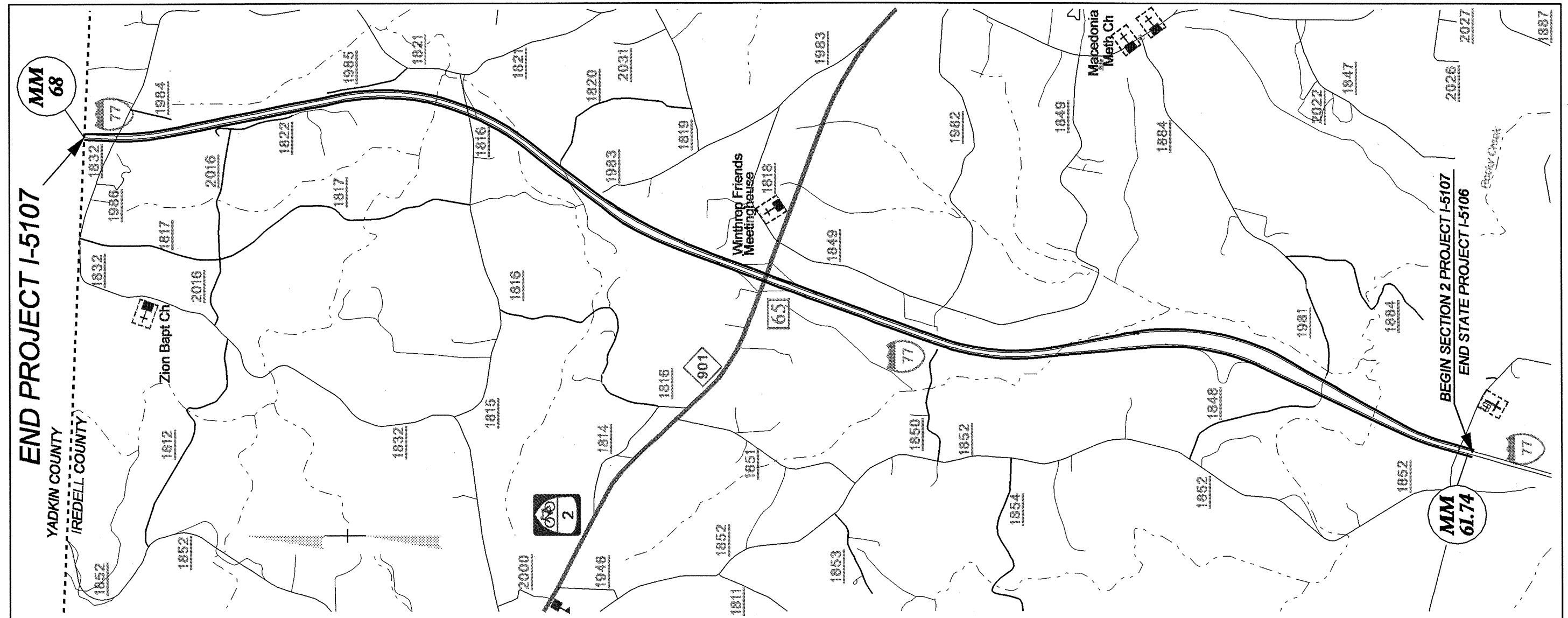
PROJECT NO.	SHEET NO.	TOTAL NO.
I-5107	1	7



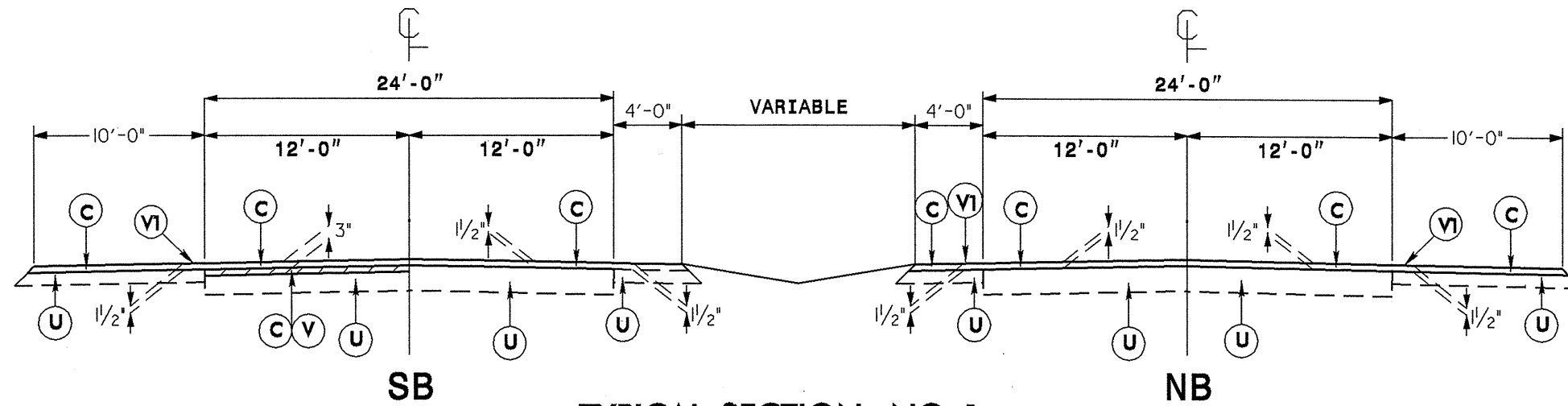
MAP 1

**PROJECT I-5107 IREDELL COUNTY
MILE MARKER 61.74 to MILE MARKER 68**

PROJECT NO.	SHEET NO.	TOTAL NO.
I-5107	2	7

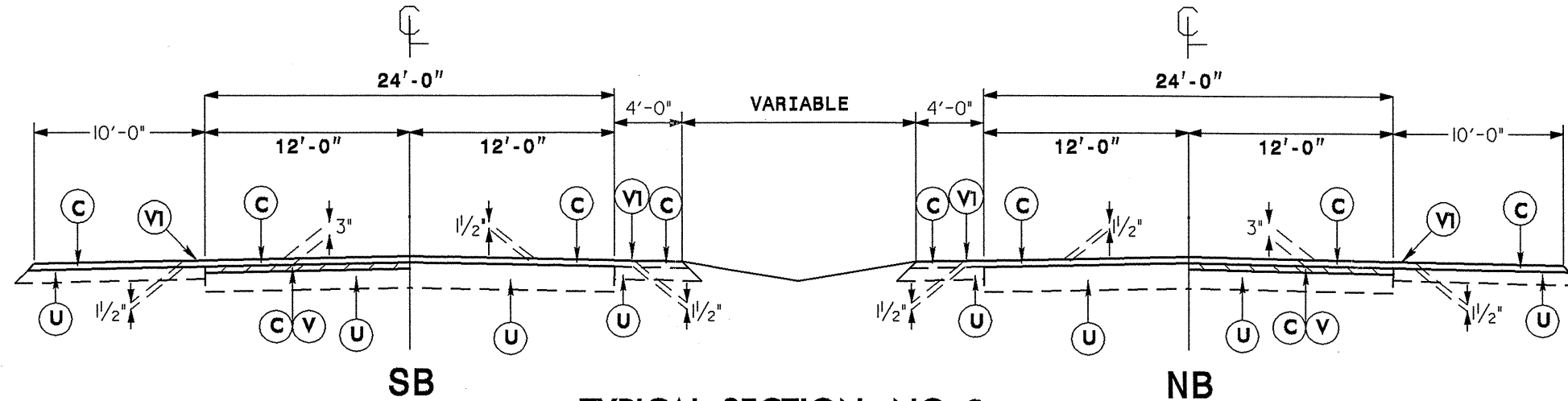


MAP 2



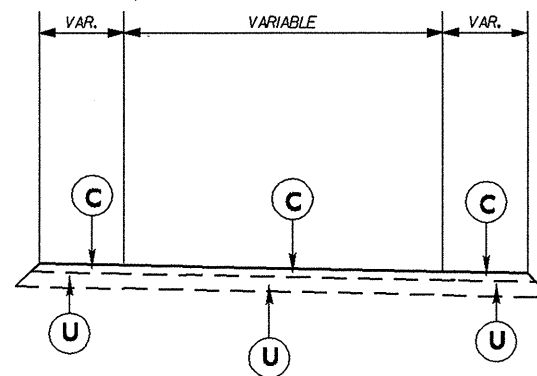
TYPICAL SECTION NO. 1

USE TYPICAL SECTION NO. 1 AS FOLLOWS
FROM MILE MARKER 56 TO MILE MARKER 57.83



TYPICAL SECTION NO. 2

USE TYPICAL SECTION NO. 2 AS FOLLOWS
FROM MILE MARKER 61.74 TO MILE MARKER 68



TYPICAL SECTION NO. 3

USE TYPICAL SECTION NO. 3 ON RAMP AND LOOPS
IN CONJUNCTION WITH TYPICAL NO. 1 & 2

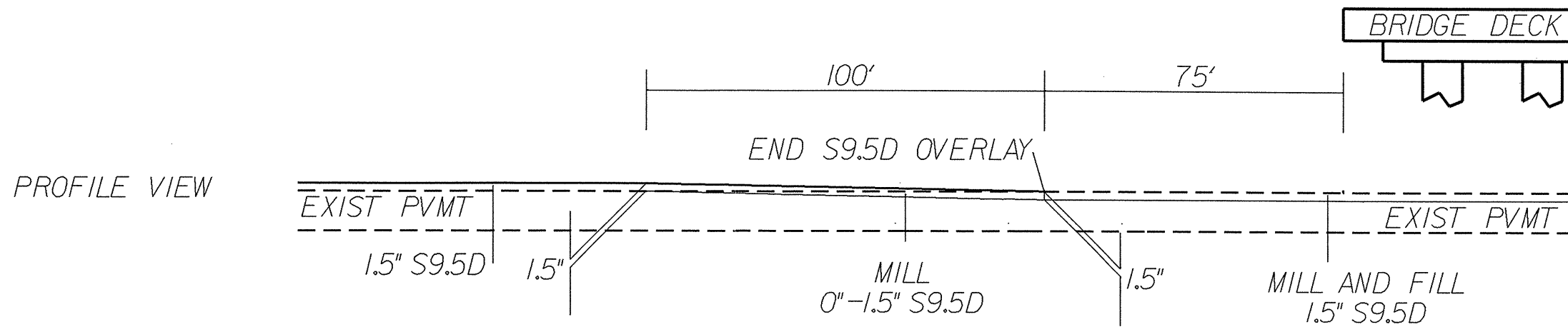
PAVEMENT SCHEDULE

C	PROP. APPROX. 1.5" ASPHALT CONCRETE SURFACE COURSE, TYPE S9.5D, AT AN AVERAGE RATE OF 168 LBS. PER SQ. YD.
U	EXISTING PAVEMENT.
V	MILLING ASPHALT PAVEMENT 1.5" DEPTH
V1	MILLED RUMBLE STRIPS

NOTE: PAVEMENT EDGE SLOPES ARE 1:1 UNLESS SHOWN OTHERWISE.

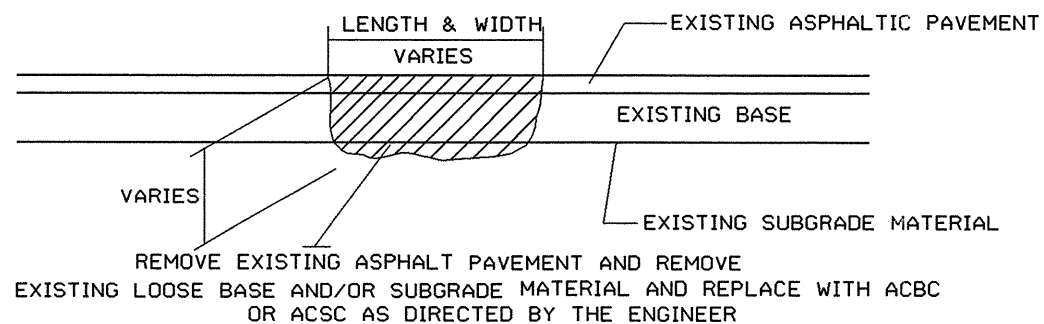
5/14/99

SYSTEMS



Bridge Approach And Departure Detail B

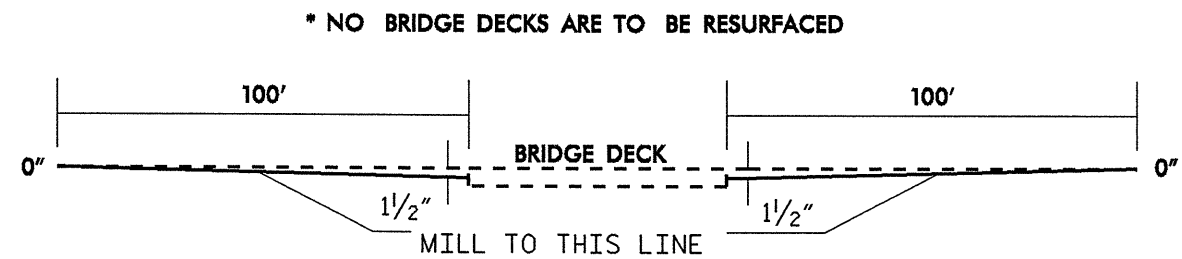
USE DETAIL AT THE FOLLOWING LOCATIONS
 I-77 SOUTH BOUND LANE UNDER BRIDGE #23 (NC 901)



REMOVE EXISTING ASPHALT PAVEMENT AND REMOVE EXISTING LOOSE BASE AND/OR SUBGRADE MATERIAL AND REPLACE WITH ACBC OR ACSC AS DIRECTED BY THE ENGINEER

PATCHING EXISTING PAVEMENT

USE WITH TYPICAL NO. 2 WHERE SHOULDER PATCHING MAY BE NECESSARY



* NO BRIDGE DECKS ARE TO BE RESURFACED

BRIDGE PROFILE

USE DETAIL FOR INCIDENTAL MILLING AT ALL BRIDGE APPROACHES AND DEPARTURES AND TO TIE INTO BEGINNING AND ENDING OF PROJECT

5/14/99

PROJECT NO.	SHEET NO.	TOTAL NO.
I-5107	5	7

SUMMARY OF QUANTITIES

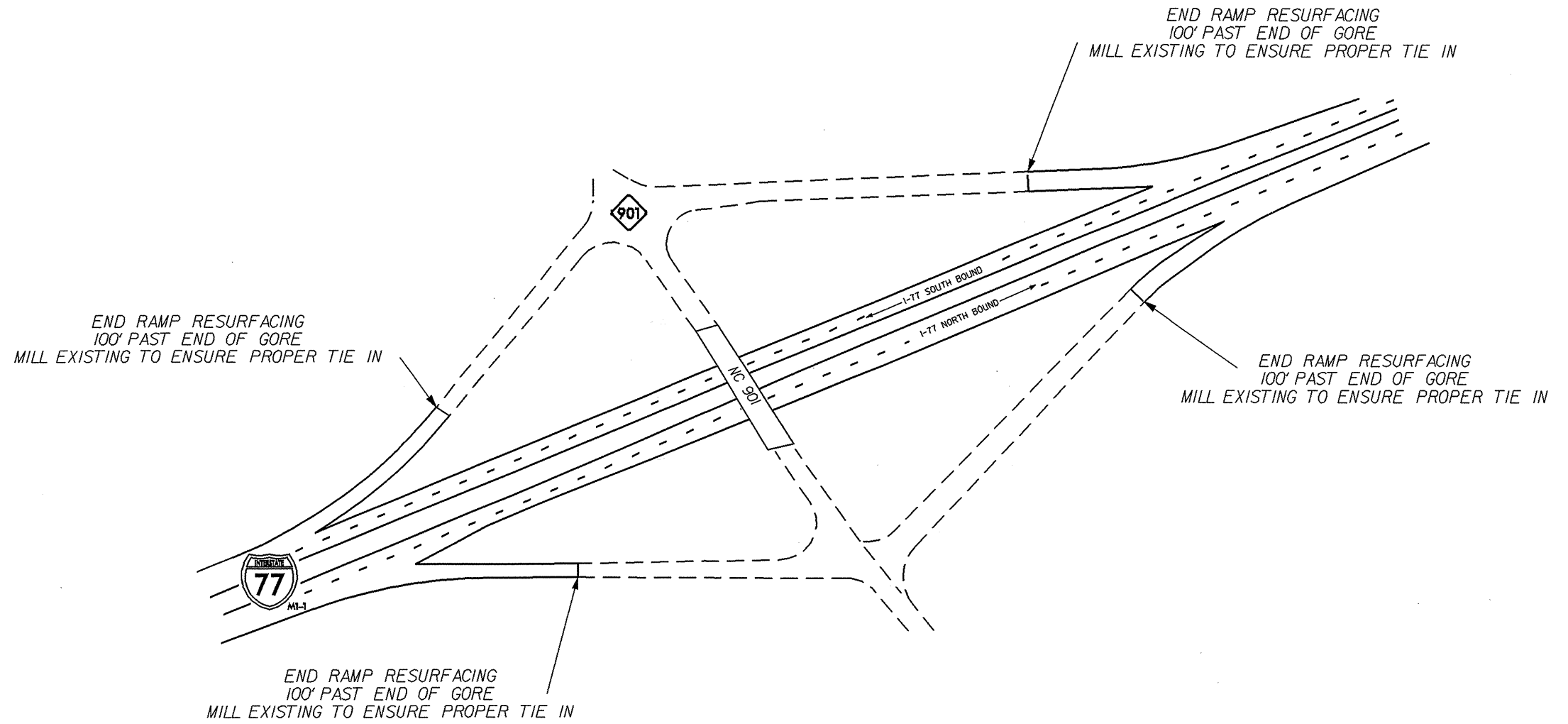
PROJECT NO	COUNTY	MAP NO	ROUTE	DESCRIPTION	TYP	FINAL SURFACE TESTING REQUIRED	LENGTH MI	WIDTH FT	1 1/2" MILLING SY	INCIDENTAL MILLING SY	SURFACE COURSE, S9.5D TONS	PG 76-22 PLANT MIX TONS	PATCHING EXISTING PAVEMENT TONS	MILLED RUMBLE STRIPS (ASPHALT CEMENT CONCRETE) LF
I-5107	Iredell	1 & 2	I-77	MM 56 TO MM 57.83 & MM 61.74 TO MM 68	1	YES	8.09	38	101026	9,300	40,120	2,207	1,500	171,000
				TOTAL FOR MAP NO. 1 & 2			8.09		101026	9,300	40,120	2,207	1,500	171,000
				TOTAL FOR PROJ NO. I-5107			8.09		101026	9,300	40,120	2,207	1,500	171,000
				GRAND TOTAL			8.09		101026	9,300	40,120	2,207	1,500	171,000

THERMOPLASTIC AND PAINT QUANTITIES

PROJECT NO	COUNTY	MAP NO	ROUTE	DESCRIPTION	4415000000-N	4420000000-N	4430000000-N	4480000000-N	4847100000-E	4847120000-E	4810000000-E	4820000000-E	4855000000-E	4865000000-E	4905000000-N
					FLASHING ARROW PANELS, TYPE C EA	CHANGEABLE MESSAGE SIGN EA	DRUMS EA	TMIA EA	6" POLYUREA (HIGHLY REFLECTIVE ELEMENTS) LF	12" POLYUREA (HIGHLY REFLECTIVE ELEMENTS) LF	4" WHITE PAINT LF	8" WHITE PAINT LF	REMOVAL OF PAVEMENT MARKING LINES (6") LF	12" LINE REMOVAL LF	SNOW PLOWABLE MARKERS EA
I-5107	Iredell	1 & 2	I-77	MM 56 TO MM 57.83 & MM 61.74 TO MM 68	1	1	600	1	195,300	4,000	344,000	8,000	15,000	4,000	1,166
				TOTAL FOR MAP NO. 1 & 2	1	1	600	1	195,300	4,000	344,000	8,000	15,000	4,000	1,166
				TOTAL FOR PROJ NO. I-5107	1	1	600	1	195,300	4,000	344,000	8,000	15,000	4,000	1,166
				GRAND TOTAL	1	1	600	1	195,300	4,000	344,000	8,000	15,000	4,000	1,166

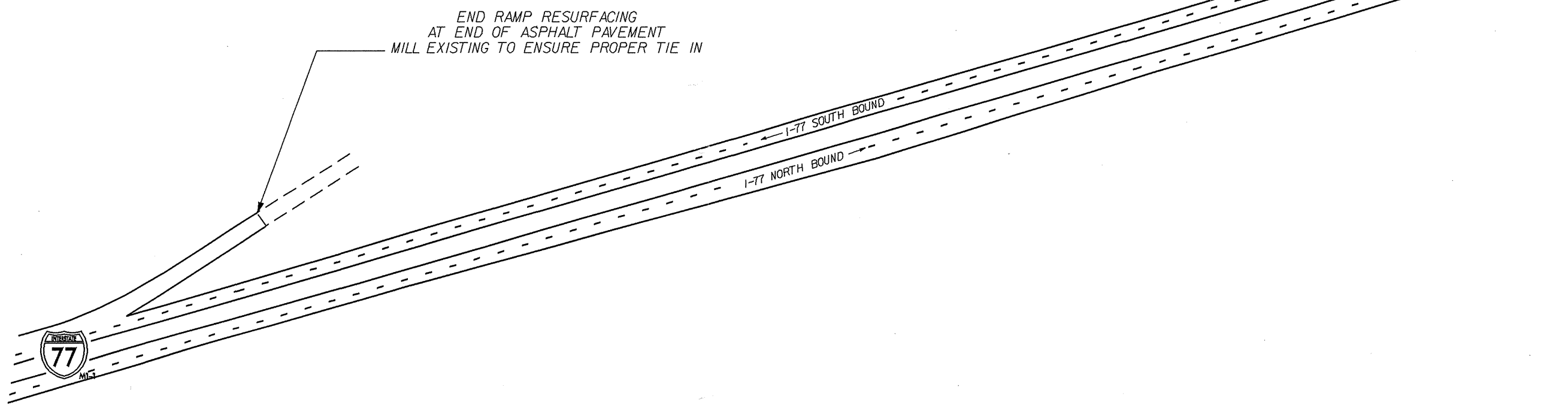
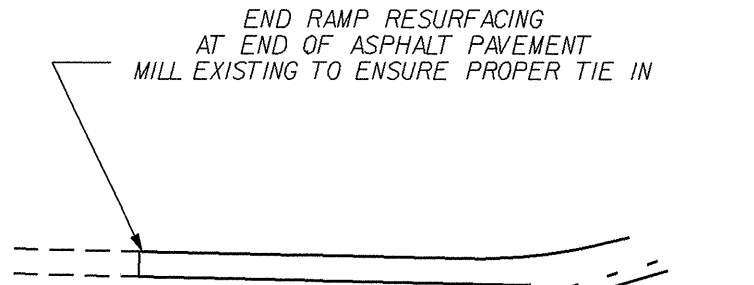
5/14/99

SYSTEMS



RAMPS AT I-77 / NC901

5/14/99

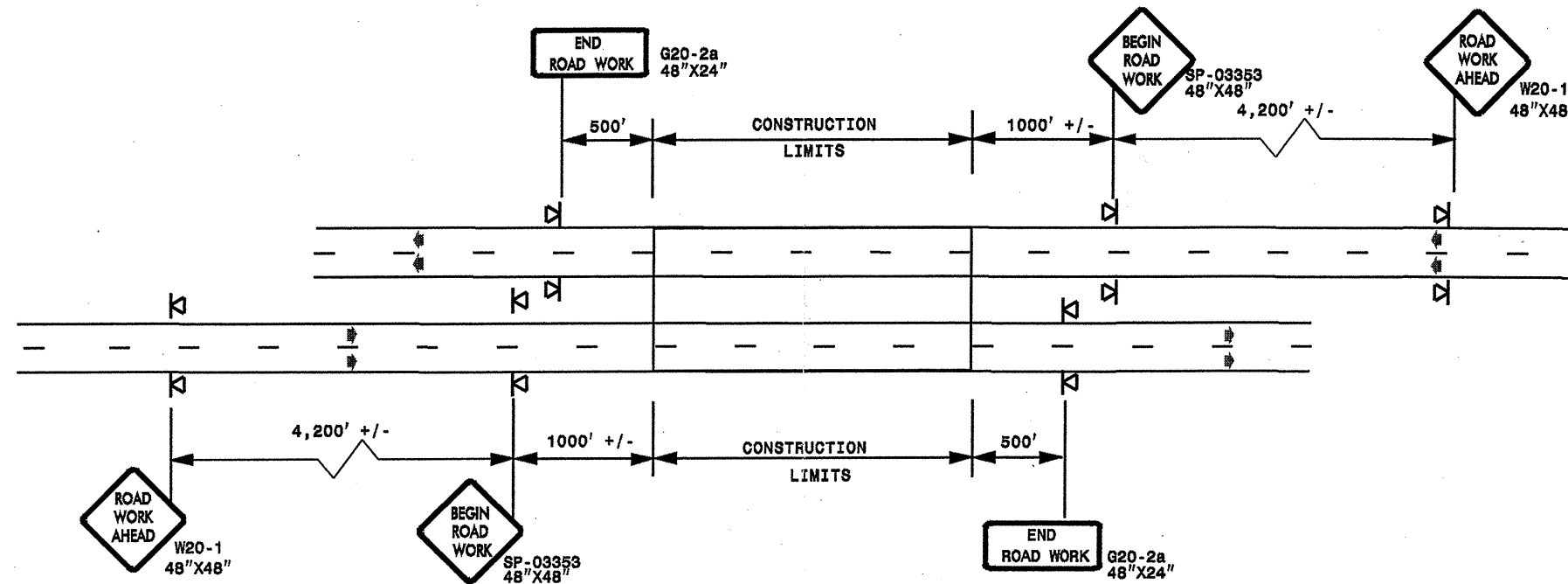


I-77 SOUTH BOUND REST AREA

CONDITIONS

ADVANCE WORK ZONE WARNING SIGNING FOR FREEWAYS (4 LANES OR GREATER)

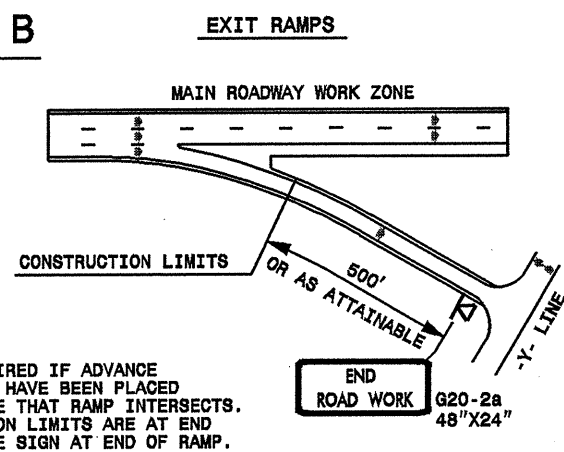
DETAIL A



STATE OF NORTH CAROLINA
DEPT. OF TRANSPORTATION
DIVISION OF HIGHWAYS
RALEIGH, N.C.

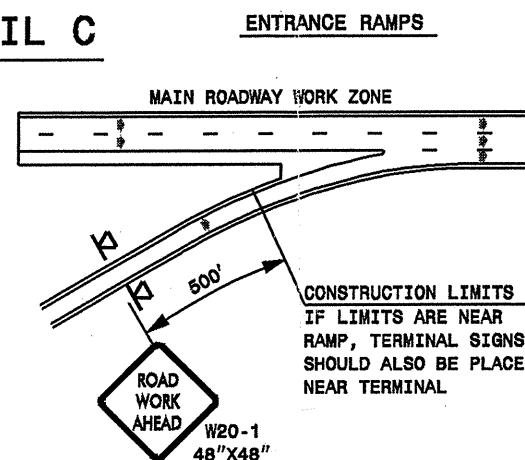
ROADWAYS INTERSECTING ALONG FREEWAY WORK ZONE (Y-LINES)

DETAIL B



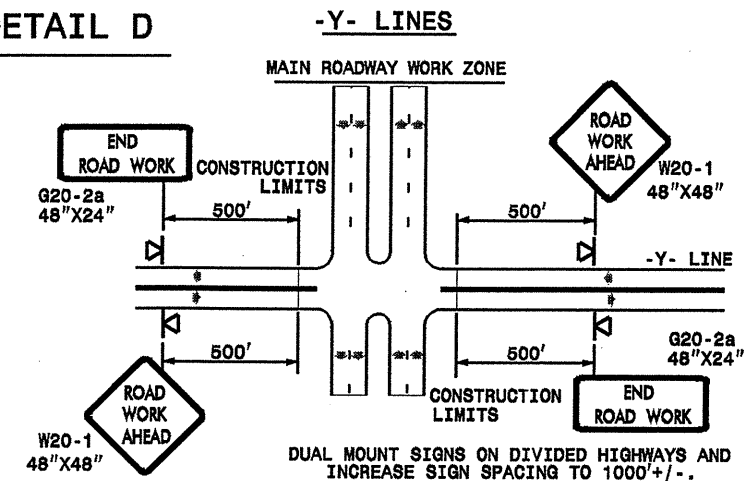
NOTE:
SIGN NOT REQUIRED IF ADVANCE
WARNING SIGNS HAVE BEEN PLACED
ALONG -Y- LINE THAT RAMP INTERSECTS.
IF CONSTRUCTION LIMITS ARE AT END
OF RAMP, PLACE SIGN AT END OF RAMP.

DETAIL C



CONSTRUCTION LIMITS
IF LIMITS ARE NEAR
RAMP, TERMINAL SIGNS
SHOULD ALSO BE PLACED
NEAR TERMINAL

DETAIL D



DUAL MOUNT SIGNS ON DIVIDED HIGHWAYS AND
INCREASE SIGN SPACING TO 1000'+/-.

GENERAL NOTES

- USE FLUORESCENT ORANGE SHEETING (TYPE VII OR HIGHER) ON ALL ADVANCE WORK ZONE SIGNS.
- DO NOT INSTALL ADVANCE WARNING SIGNS MORE THAN 3 DAYS PRIOR TO BEGINNING OF WORK.
- ALL SIGN SPACING DIMENSIONS ARE APPROXIMATE, FIELD ADJUST AS NECESSARY OR AS DIRECTED.
- USE PORTABLE WORK ZONE SIGNS ONLY WITH PORTABLE WORK ZONE SIGN STANDS SPECIFICALLY DESIGNED FOR ONE ANOTHER. PORTABLE WORK ZONE SIGNS MAY BE ROLL UP OR APPROVED COMPOSITE.
- PROVIDE PORTABLE WORK ZONE SIGN STANDS, PORTABLE SIGNS AND SIGN SHEETING WHICH ARE LISTED ON THE NORTH CAROLINA DEPARTMENT OF TRANSPORTATION'S APPROVED PRODUCT LIST OR ACCEPTED AS TRAFFIC QUALIFIED BY THE TRAFFIC CONTROL UNIT.
- ** TWO-WAY UNDIVIDED ADVANCE WARNING SIGN CONFIGURATION MAY BE USED ON MULTI-LANE FACILITIES WHERE CONDITIONS LIMIT THE USE OF DUAL MOUNTED SIGNS AS DETERMINED BY THE ENGINEER.

LEGEND

▣ PORTABLE SIGN

➔ DIRECTION OF TRAFFIC FLOW

DETAIL DRAWING
FOR FREEWAYS
WORK ZONE WARNING SIGNS
(SHORT-DURATION LANE CLOSURES)

SHEET 1 OF 1

APPROVED: _____ DATE: _____	DETAIL DRAWING FOR FREEWAYS WORK ZONE WARNING SIGNS	
SEAL	SCALE: NONE	REVISIONS
	DATE: _____	7-98 10/01
	DWG. BY: _____	10-98 03/04
	DESIGN BY: _____	01/01 11/04
REVIEWED BY: _____	DATE: _____	DATE: _____

27-APR-2009 09:43
s:\signing\resurfacing\2009\div2\c202276_418893.1\5107_freewayesgreat\july2006.dgn
pseymer AT WZTC37502