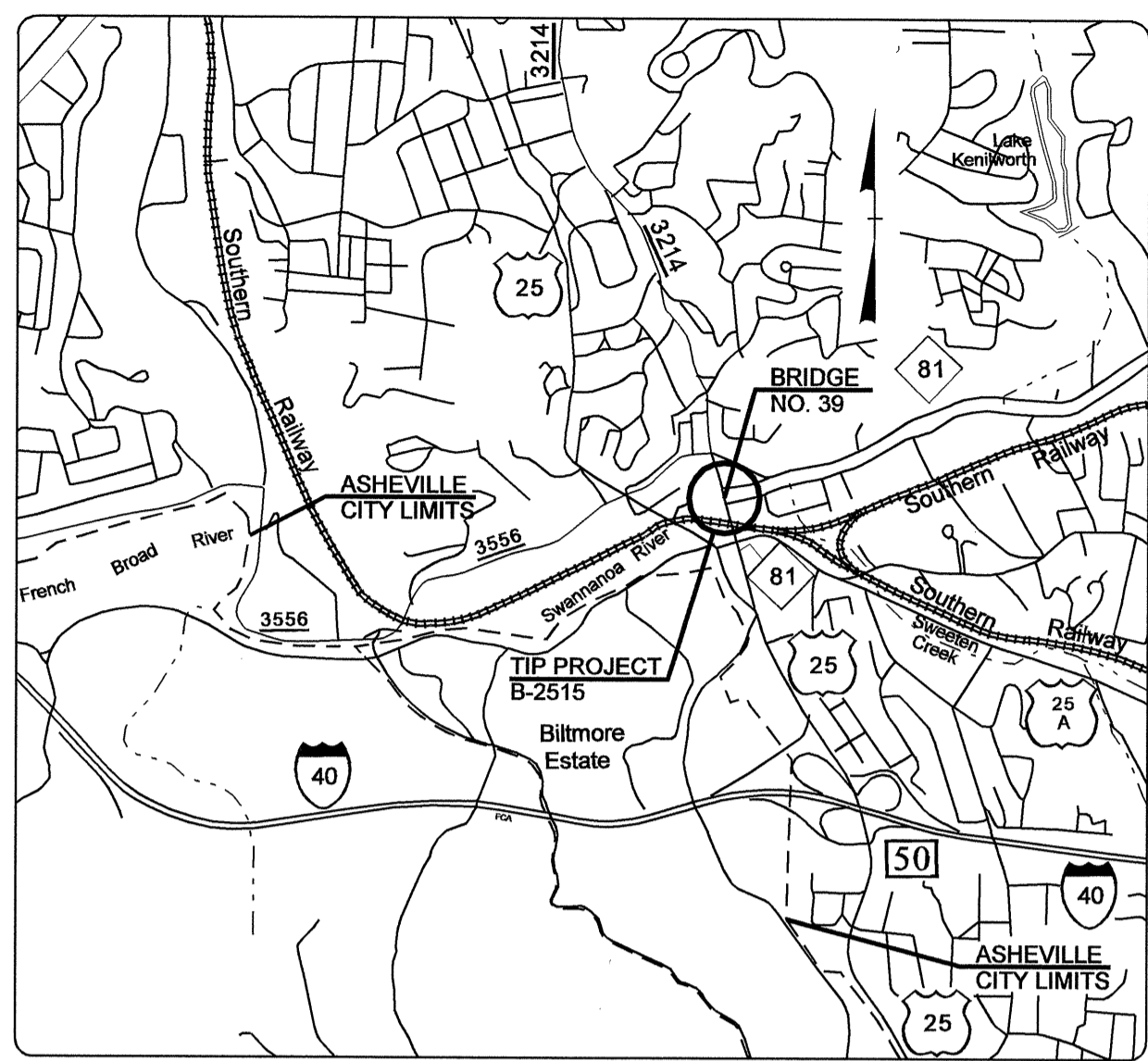


STATE OF NORTH CAROLINA
DIVISION OF HIGHWAYS

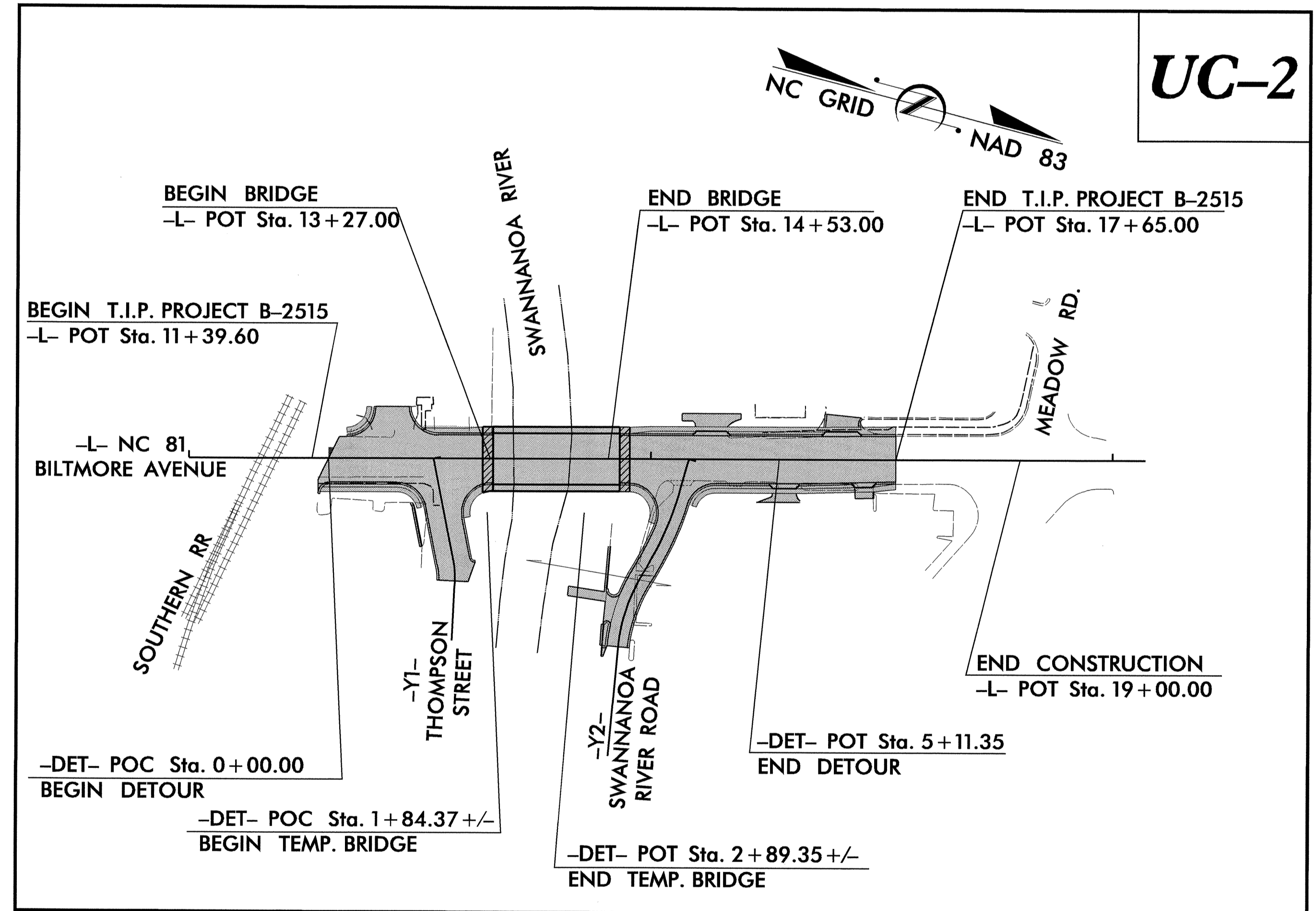
**UTILITY CONSTRUCTION PLANS
BUNCOMBE COUNTY**

LOCATION: BRIDGE NO. 39 OVER SWANNANOA RIVER ON NC 81 (BILTMORE AVENUE)
TYPE OF WORK: SEWER ABANDONMENT

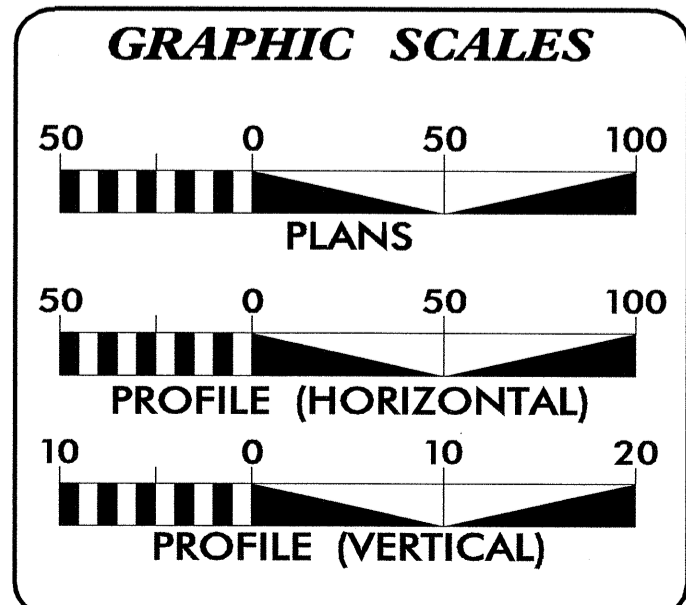
TIP PROJECT: B-2515



VICINITY MAP OF B-2515



UC-2



INDEX OF SHEETS

SHEET NO.	DESCRIPTION
UC-1	TITLE SHEET
UC-2	UTILITY CONSTRUCTION PLAN SHEET

WATER AND SEWER OWNERS ON PROJECT

(1) SANITARY SEWER-METROPOLITAN SEWERAGE DISTRICT OF BUNCOMBE COUNTY

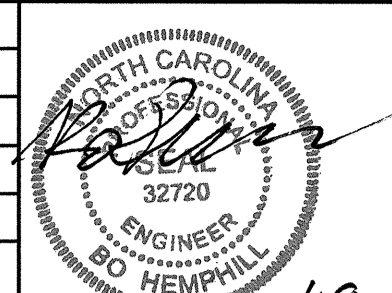
SEAL

PREPARED IN THE OFFICE OF:
**DIVISION OF HIGHWAYS
UTILITIES ENGINEERING SECTION**

1591 MAIL SERVICES CENTER
RALEIGH NC 27699-1591
PHONE (919) 256-4128
FAX (919) 256-4119

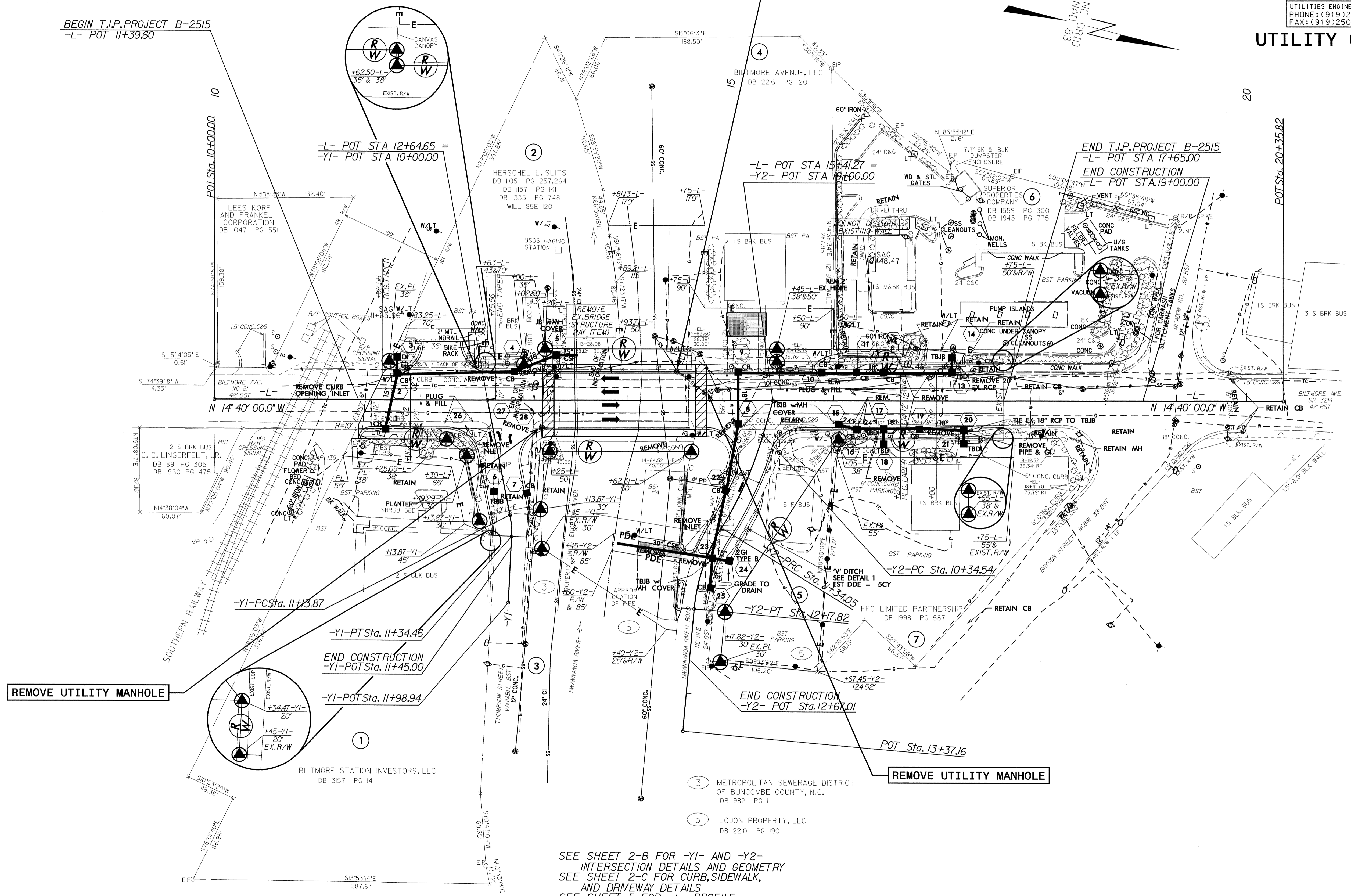
Roger Worthington, P.E. UTILITIES SECTION ENGINEER
Carl Barclay, P.E. UTILITIES SQUAD LEADER PROJECT ENGINEER
Bo Hemphill, P.E. UTILITIES PROJECT DESIGNER

16-APR-2009 17:27
r:\utilities\vdg\ut\proj\b2515_ut_title-uc1_psh.dgn
\$\$\$\$\$USERNAME\$\$\$\$\$

PROJECT REFERENCE NO.	SHEET NO.
B-2515	UC-2
DESIGNED BY: BH	
DRAWN BY: BH	
CHECKED BY: CAB	
APPROVED BY: CAB	
REVISED:	
NORTH CAROLINA DEPARTMENT OF TRANSPORTATION	
UTILITIES ENGINEERING SEC. PHONE: (919) 250-4128 FAX: (919) 250-4119	
UTILITY CONSTRUCTION PLANS ONLY	

UTILITY CONSTRUCTION

BEGIN T.J.P. PROJECT B-2515
 -L- POT 11+39.60



- 3 METROPOLITAN SEWERAGE DISTRICT OF BUNCOMBE COUNTY, N.C. DB 982 PG 1
- 5 LOJON PROPERTY, LLC DB 2210 PG 190

SEE SHEET 2-B FOR -Y1- AND -Y2- INTERSECTION DETAILS AND GEOMETRY
 SEE SHEET 2-C FOR CURB, SIDEWALK, AND DRIVEWAY DETAILS
 SEE SHEET 5 FOR -L- PROFILE
 SEE SHEET 5 FOR -Y1- PROFILE
 SEE SHEET 5 FOR -Y2- PROFILE
 SEE SHEET S-1 TO S- FOR STRUCTURE PLANS

5/14/99
 16-APR-2009 17:29
 \\b2515-ut-04-uc02_psh.dgn

09/08/99

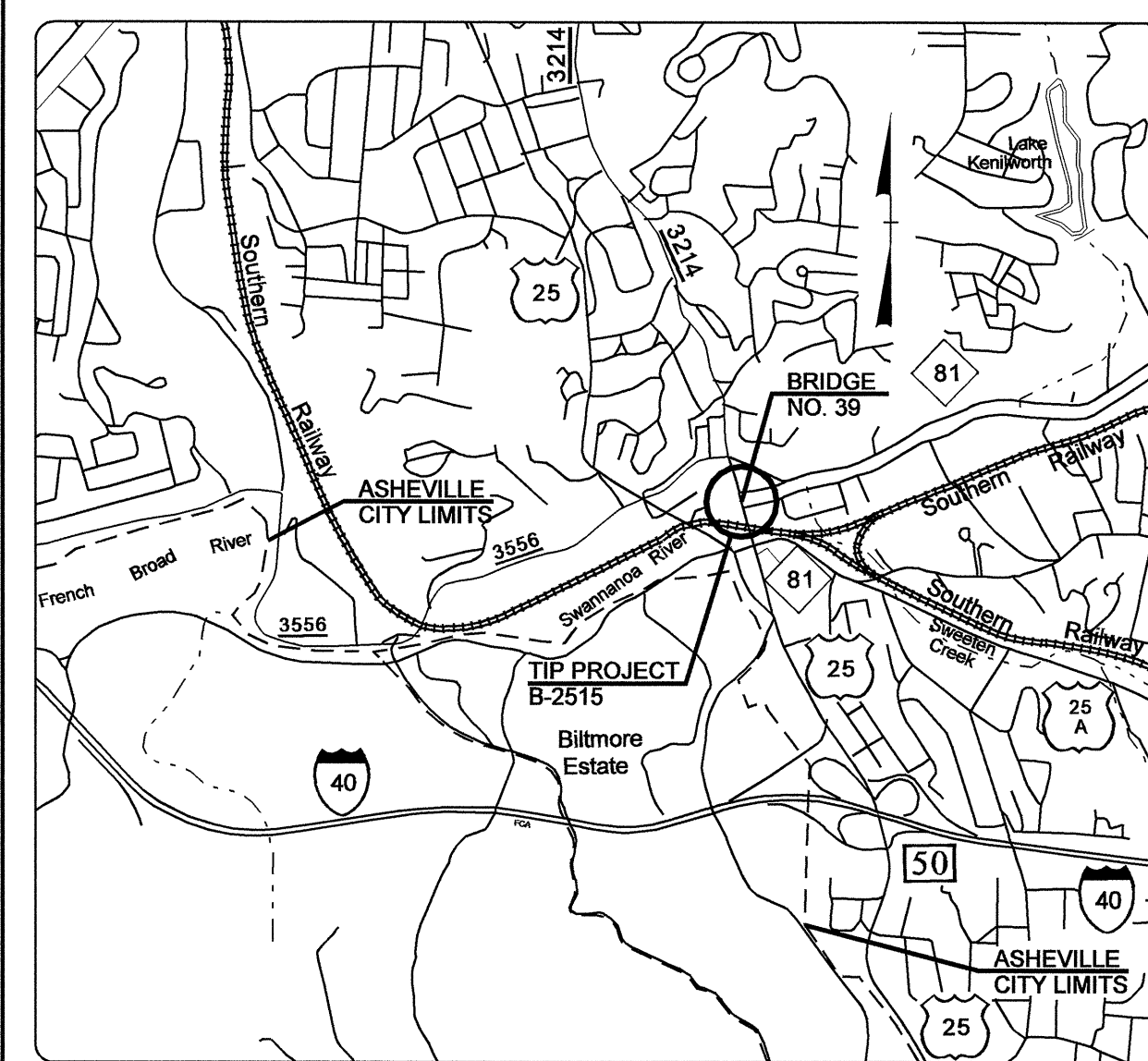
TIP PROJECT: B-2515

STATE OF NORTH CAROLINA
DIVISION OF HIGHWAYS

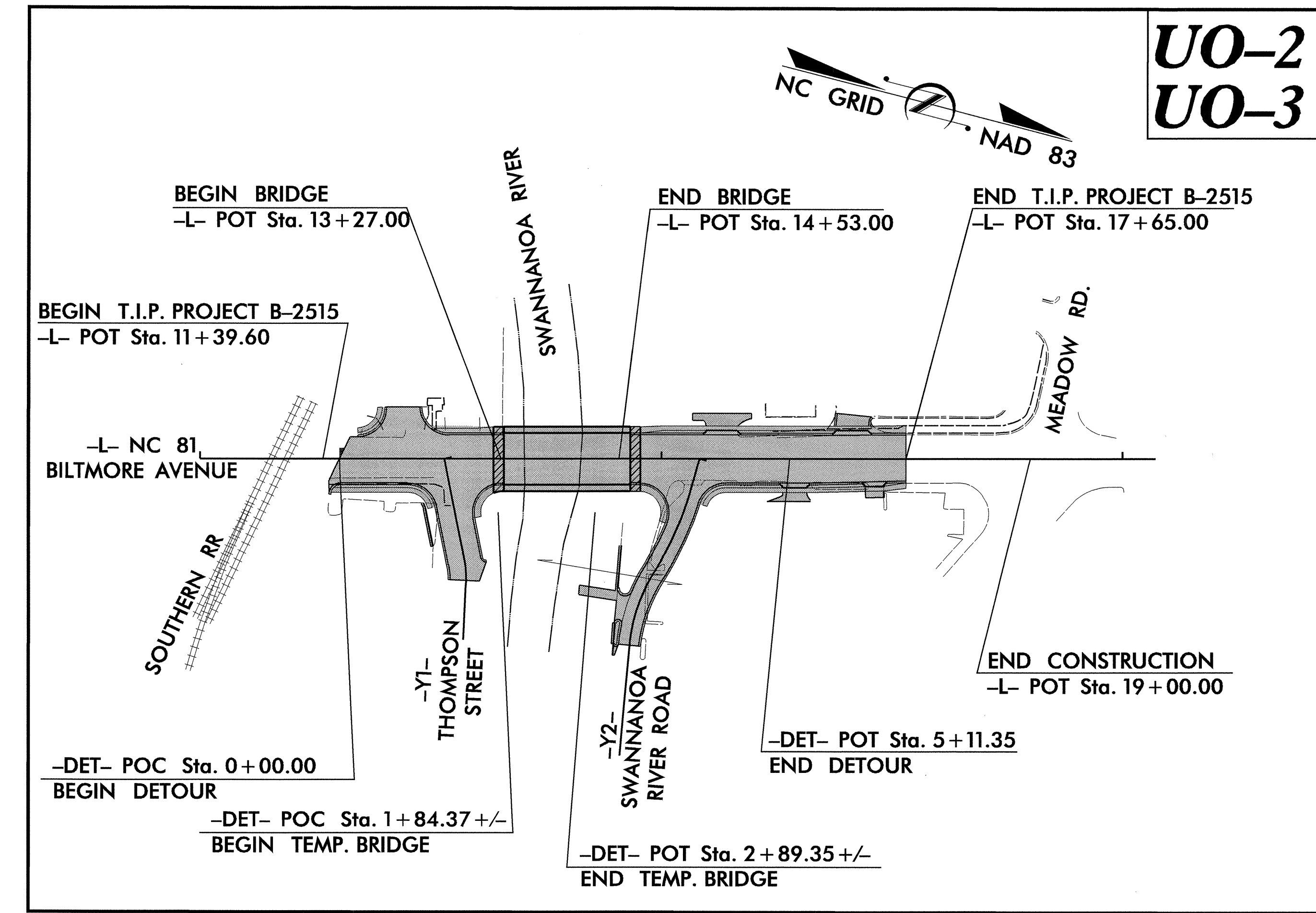
T.I.P. NO.	SHEET NO.
B-2515	UO-1

**UTILITIES BY OTHERS PLANS
BUNCOMBE COUNTY**

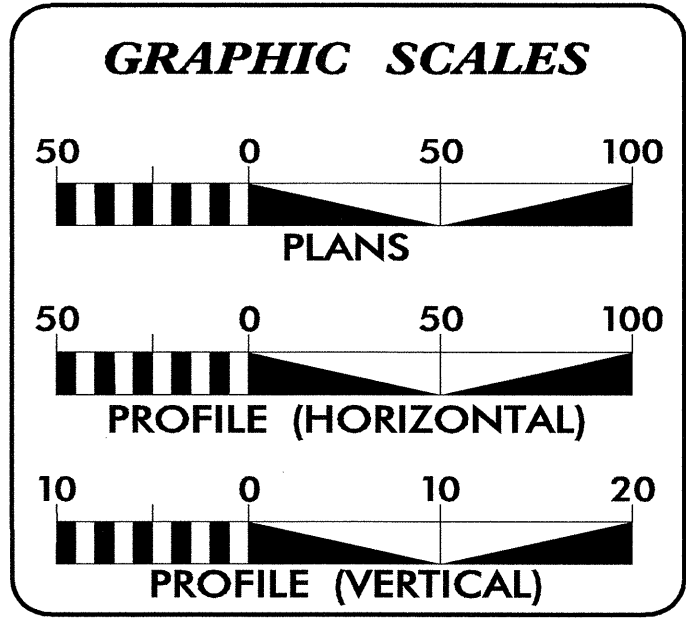
**LOCATION: BRIDGE NO. 39 OVER SWANNANOA RIVER
ON NC 81 (BILTMORE AVENUE)**
**TYPE OF WORK: TELEPHONE, POWER (TRANSMISSION AND DISTRIBUTION),
GAS, WATER AND SEWER**



VICINITY MAP OF B-2515



**UO-2
UO-3**



INDEX OF SHEETS

SHEET NO.	DESCRIPTION
UO-1	TITLE SHEET
UO-2 THROUGH UO-3	UTILITIES BY OTHERS PLAN SHEETS

UTILITY OWNERS ON PROJECT

- AT&T - TELEPHONE
- PROGRESS ENERGY - POWER
- PSNC - GAS
- WATER RES. DEPT., CITY OF ASHEVILLE - WATER
- METROPOLITAN SEWERAGE DIST. - SEWER

PREPARED IN THE OFFICE OF:
**DIVISION OF HIGHWAYS
UTILITIES ENGINEERING
SECTION**

1591 MAIL SERVICES CENTER
RALEIGH NC 27699-1591
PHONE (919) 250-4128
FAX (919) 250-4119

Roger Worthington, P.E. UTILITIES SECTION ENGINEER
Carl Barclay, P.E. UTILITIES SQUAD LEADER PROJECT ENGINEER
Bo Hemphill, P.E. UTILITIES PROJECT DESIGNER

20-APR-2009 15:23
r:\utilities\vd\proj\B2515\ut_title_uol_psh.dgn
\$\$\$\$\$USERNAME\$\$\$\$\$

