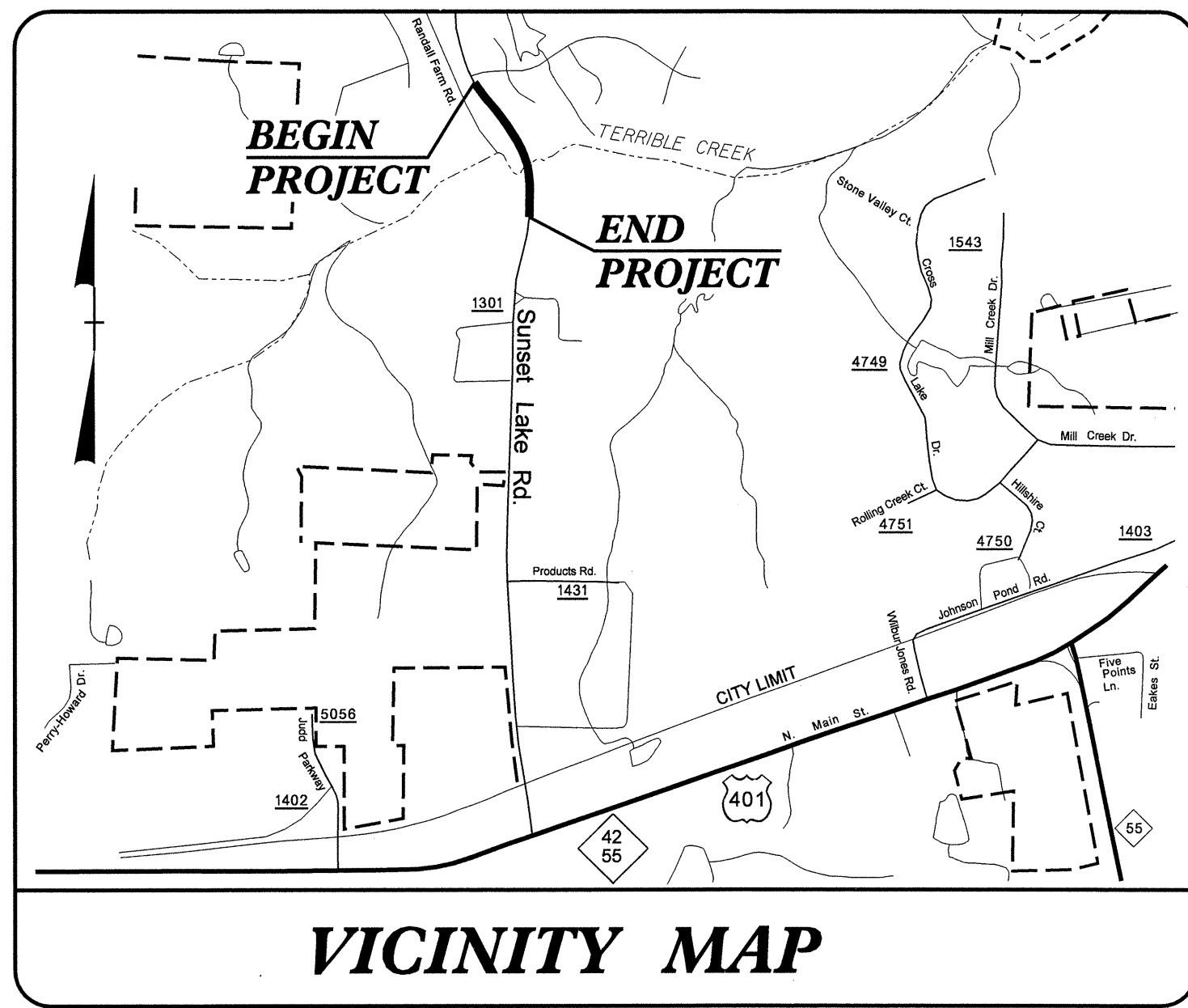


STATE	STATE PROJECT REFERENCE NO.	SHEET NO.	TOTAL SHEETS
N.C.	B-4302	UC-1	2

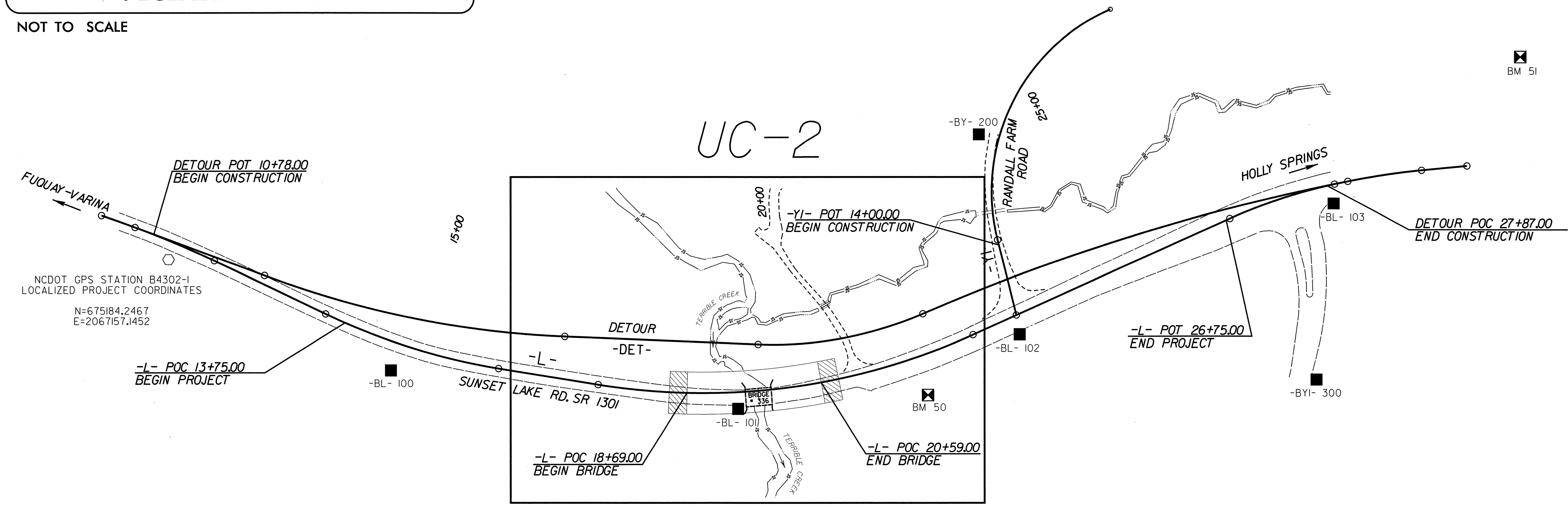
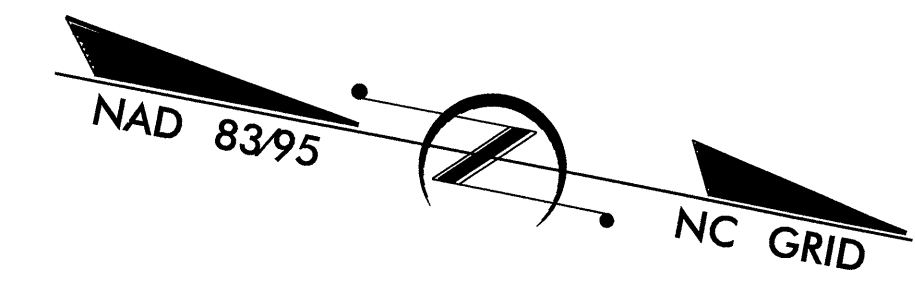
STATE OF NORTH CAROLINA
DIVISION OF HIGHWAYS

WAKE COUNTY

**LOCATION: BRIDGE NO. 336 OVER TERRIBLE CREEK
AND APPROACHES ON SR 1301 (SUNSET LAKE ROAD)**



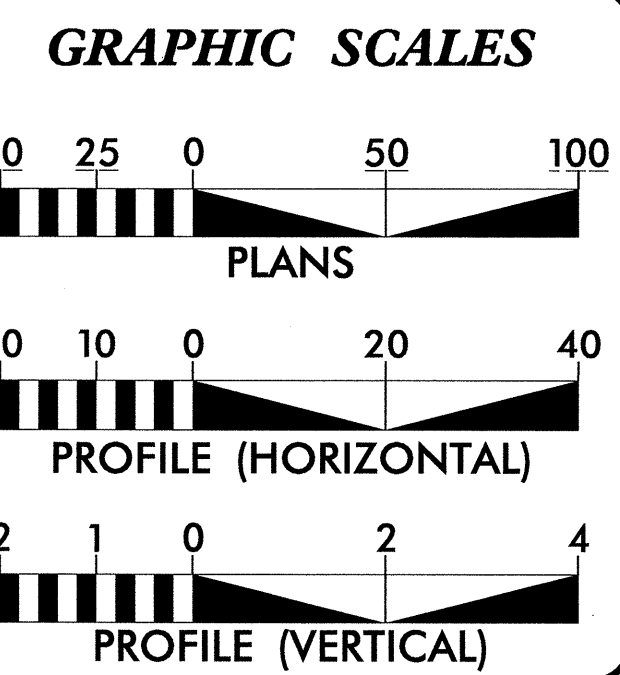
NOT TO SCALE



NOTE: DRAWING NOT TO SCALE

TIP PROJECT: B-4302

CONTRACT:



INDEX OF SHEETS

SHEET NO.	DESCRIPTION
UC-1	TITLE SHEET
UC-2	UC PLAN SHEET

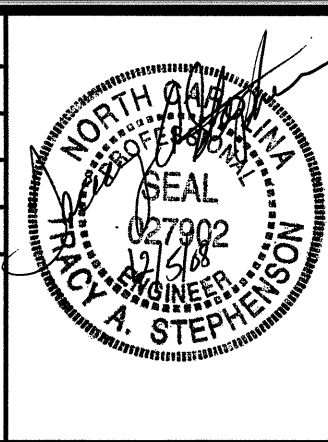
UTILITY OWNERS ON PROJECT

TOWN OF FUQUAY-VARINA	TRACY STEPHENSON, P.E. 401 OLD HONEYCUTT ROAD FUQUAY-VARINA, NC 27526 919-567-3911
-----------------------	---

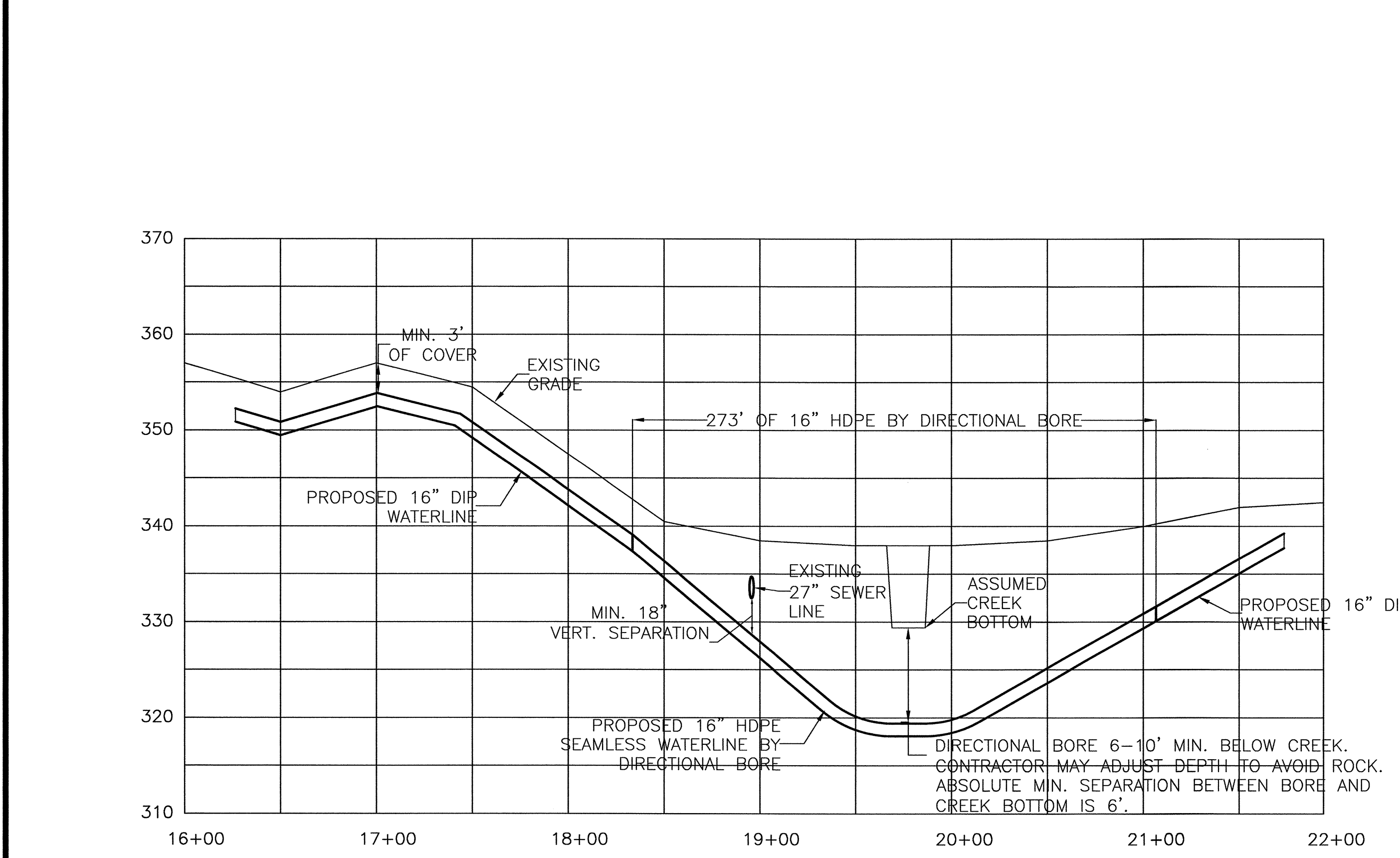
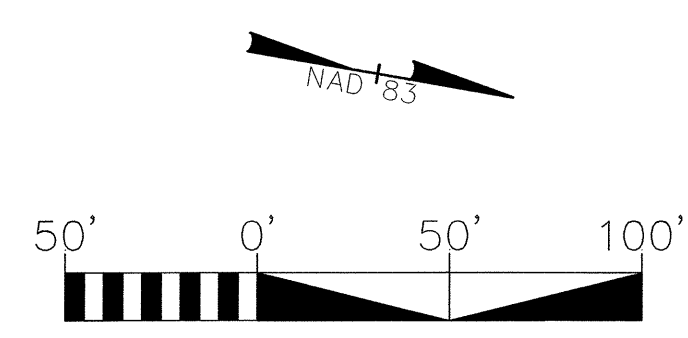
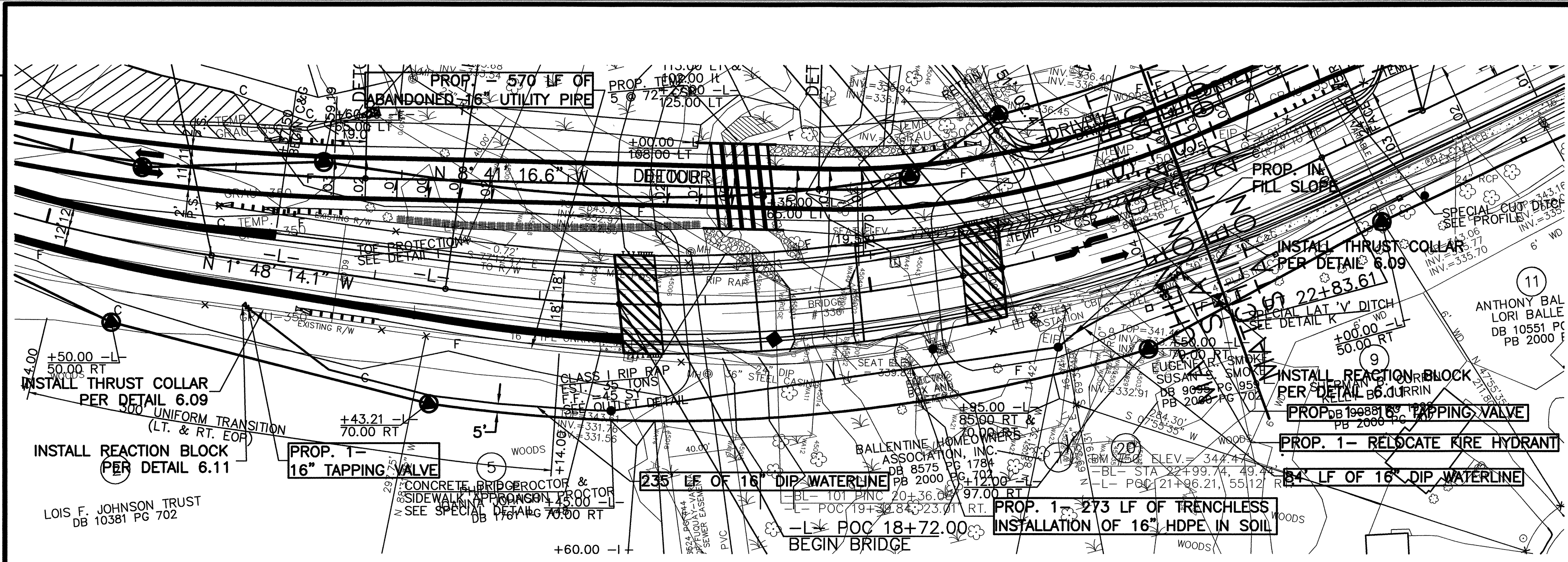
UTILITY DESIGN BY:

NCDOT PROJECT ENGINEER:
RONALD B. WILKINS, P.E.
PREPARED FOR:
NORTH CAROLINA
DEPARTMENT OF TRANSPORTATION
PROJECT SERVICES UNIT
RALEIGH, NC

DESIGNED BY: TAS
 DRAWN BY: MRL
 CHECKED BY: TAS
 APPROVED BY: TAS
 REVISED BY:

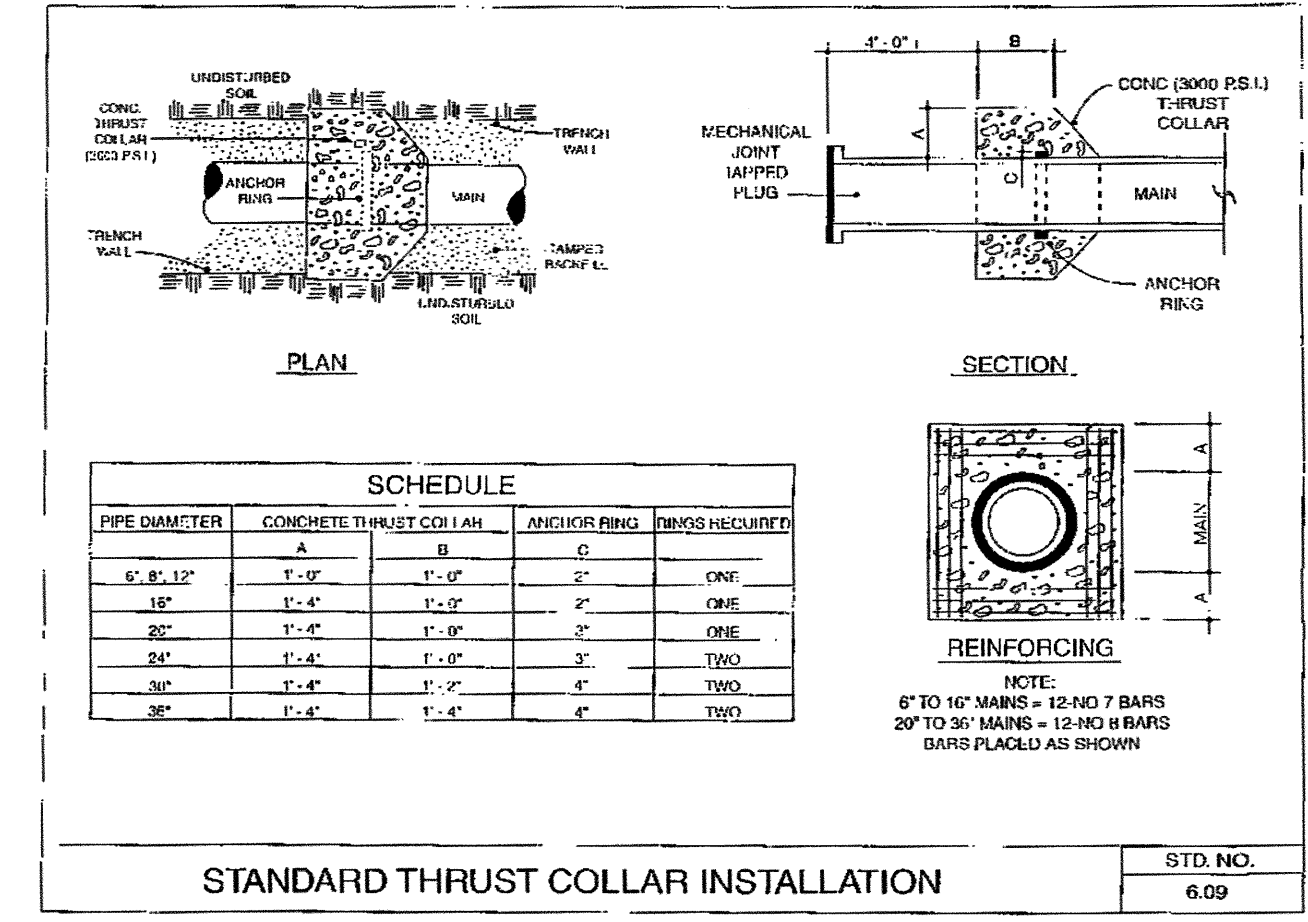
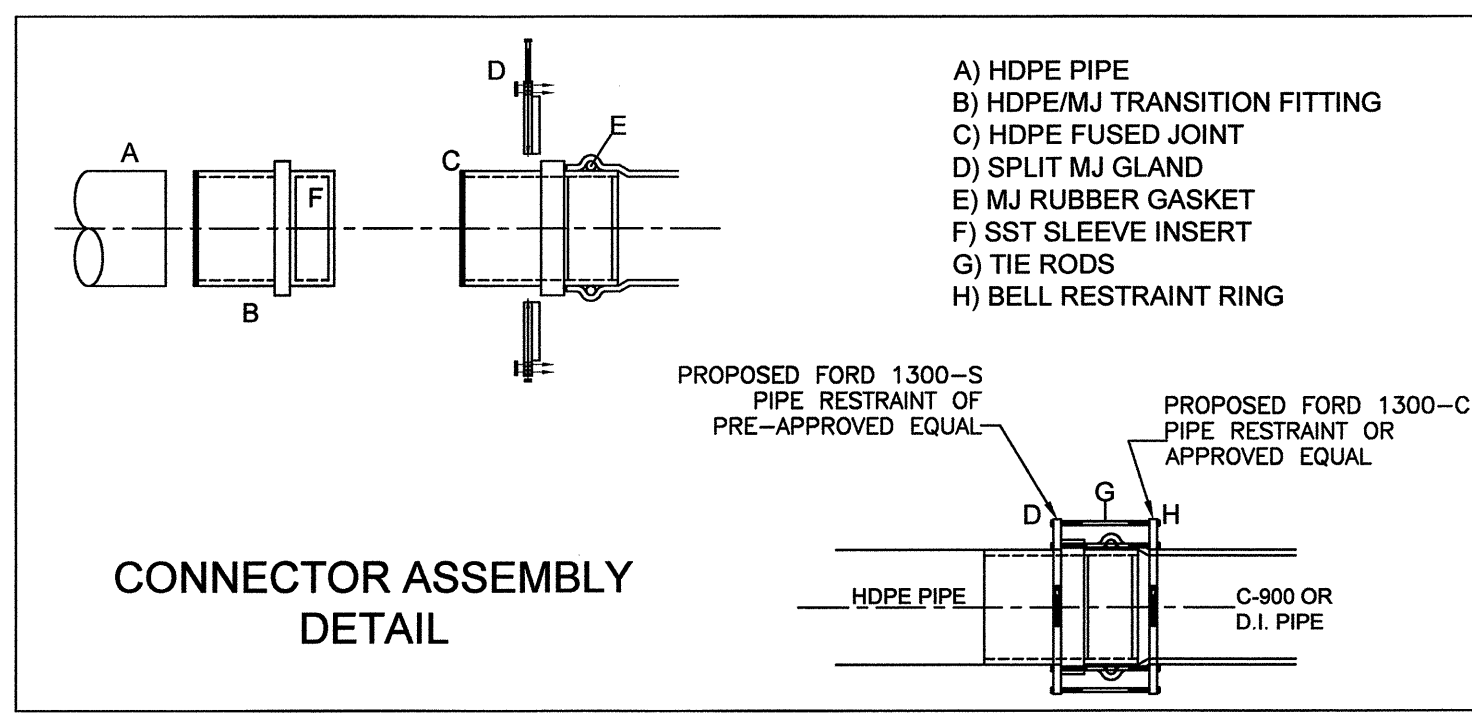


PROJECT REFERENCE NO. B-4302 SHEET NO. UC-2
 UTILITY DESIGN ENGINEER
100% UTILITY PLANS
MA Engineering CONSULTANTS, INC. 598 E. Chatham Street, Suite 137, Cary, N.C. 27511



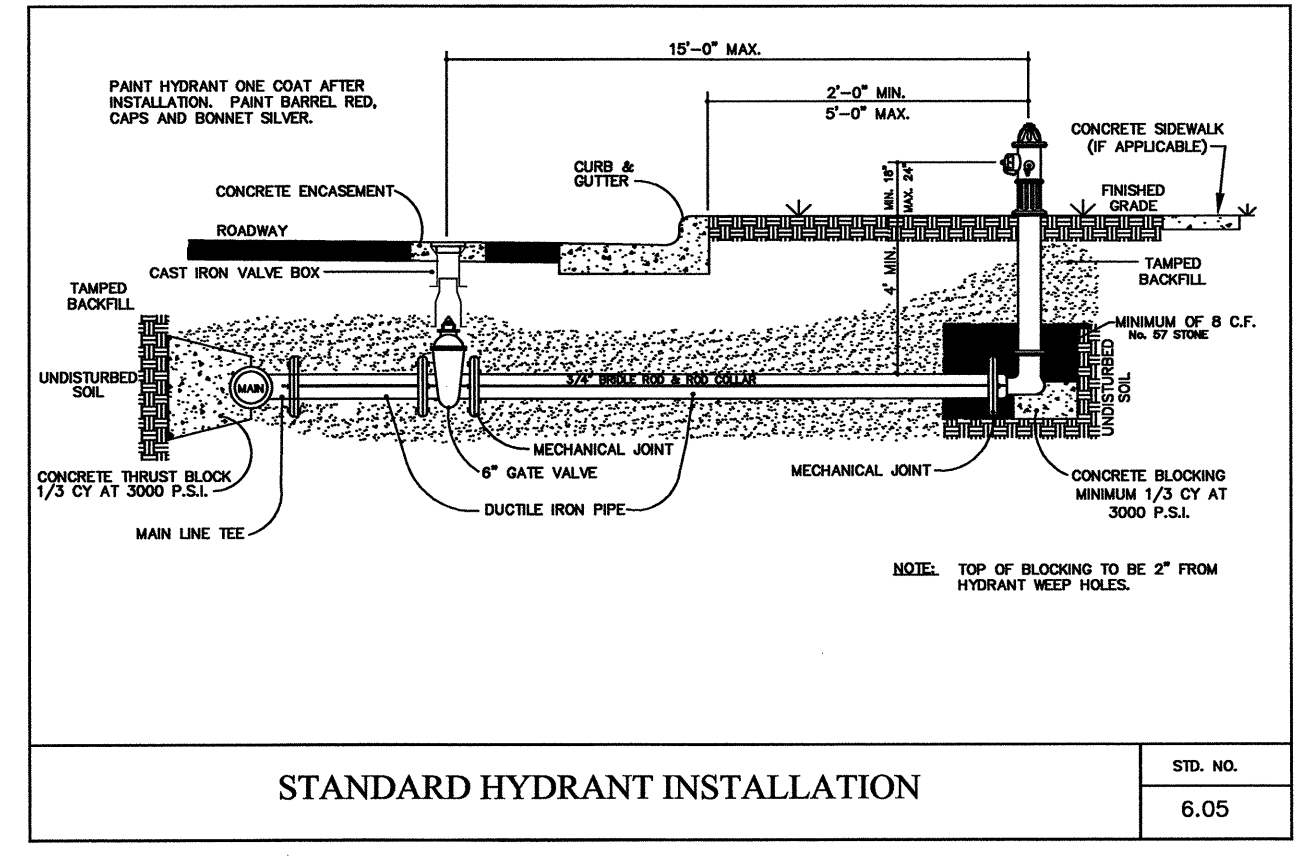
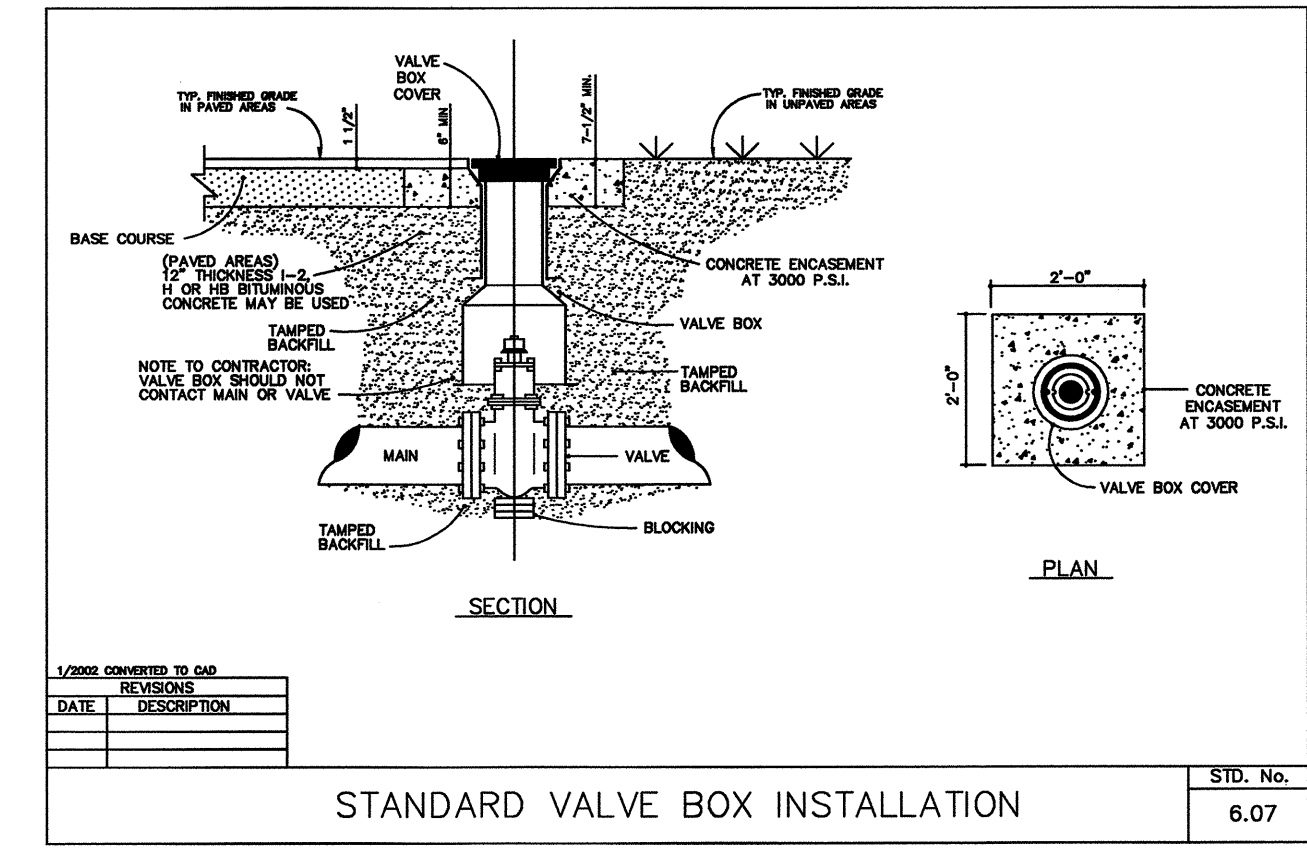
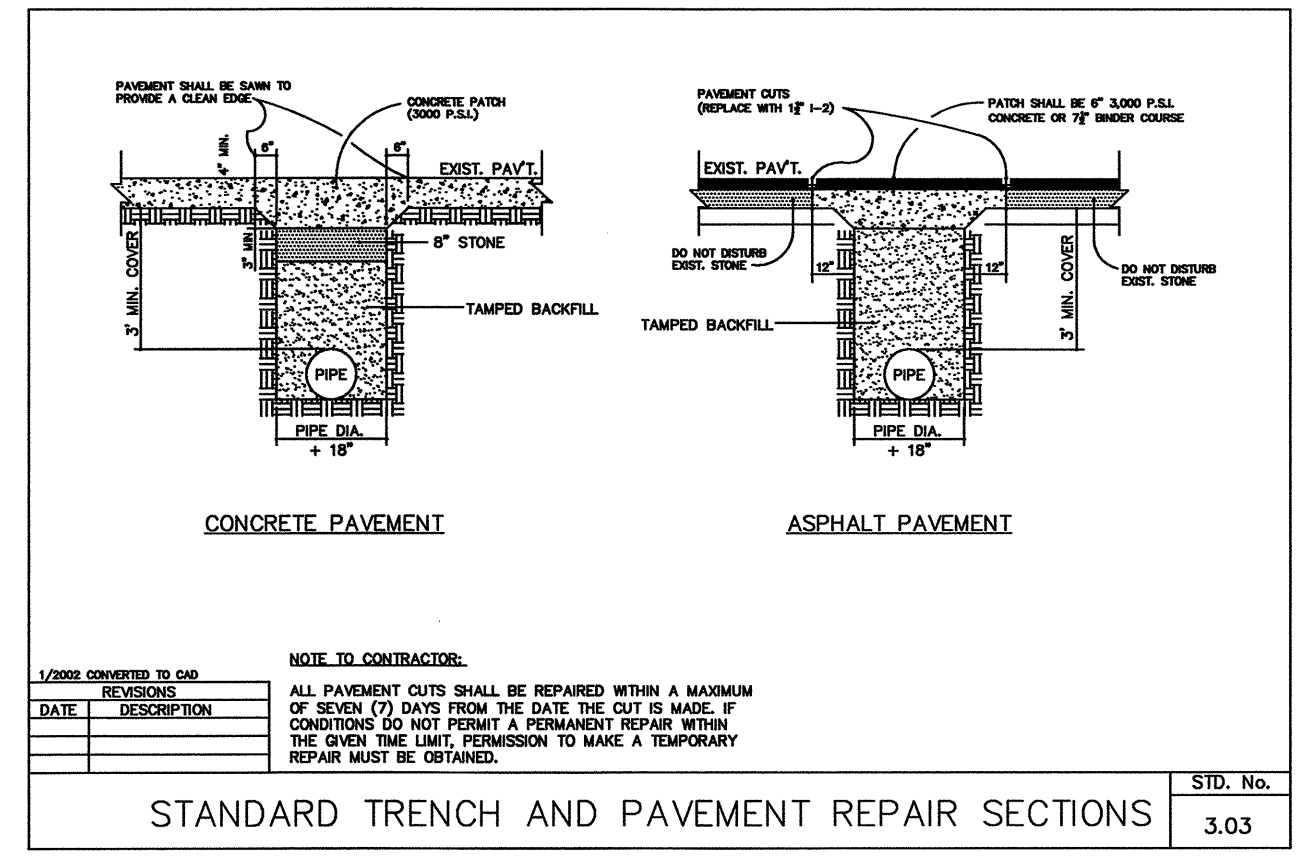
PROFILE SCALE
 HORT. 1" = 50'
 VERT. 1" = 10'

- CONSTRUCTION SEQUENCE:
1. INSTALL TAPPING VALVES, AND COMPLETE NEW WATERLINE INSTALL (INCLUDING OPEN CUT AND TRENCHLESS INSTALLATION)
 2. PRESSURE TEST, CHLORINATE, AND TAKE BACTERIOLOGICAL SAMPLES.
 3. EXPOSE EXISTING LINE AND PREPARE FOR ABANDONMENT. ALL MATERIALS, EQUIPMENT, AND SUPPLIES SHALL BE ON-SITE BEFORE ANY SHUTDOWN OF WATERLINE.
 4. ABANDON EXISTING PIPE BETWEEN 12:01 AM AND 5 AM SATURDAY.



MINIMUM CONCRETE BLOCKING (C.Y.) *					
NOM. PIPE DIA. IN.	TEES & DEAD ENDS	90° BEND	45° BEND	22-1/2° BEND	11-1/4° BEND
4	0.1	0.1	0.1	0.1	0.1
6	0.2	0.2	0.1	0.1	0.1
8	0.2	0.3	0.2	0.1	0.1
10	0.3	0.5	0.3	0.2	0.2
12	0.4	0.6	0.5	0.3	0.3
14	0.7	0.8	0.6	0.5	0.5
16	0.7	0.9	0.6	0.5	0.5
18	0.9	1.2	0.7	0.6	0.6
20	1.1	1.5	1.1	0.7	0.7
22	1.7	2.3	1.6	0.9	0.9

* CONCRETE SHALL BE 3000 P.S.I. MIN.



REVISIONS
 FILE: 8/15/18
 DATE: 8/15/18
 \$ TIMES

7/27/99

TIP PROJECT: B-4302

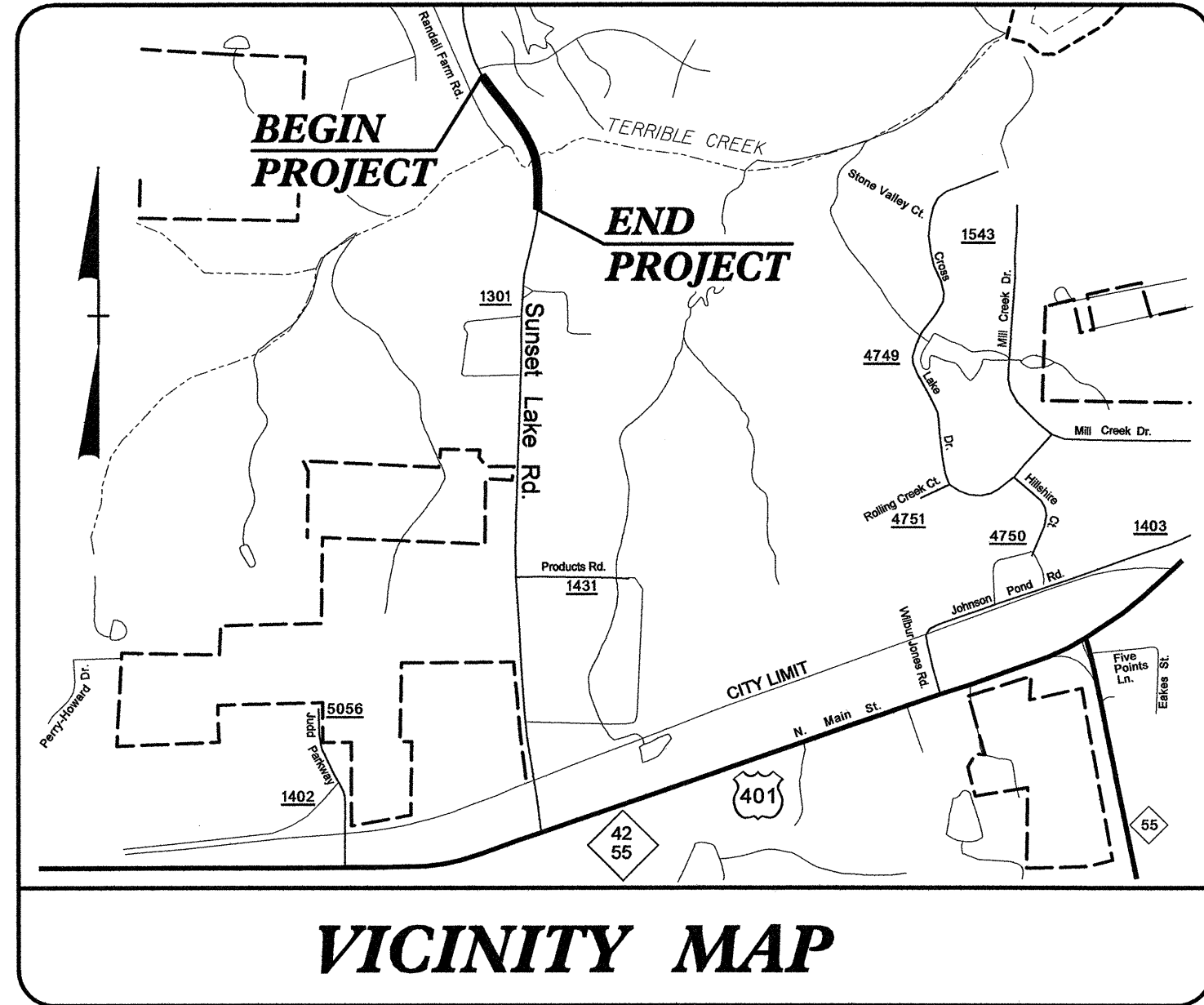
CONTRACT: C202089

STATE	STATE PROJECT REFERENCE NO.	SHEET NO.	TOTAL SHEETS
N.C.	B-4302	UO-1	3

STATE OF NORTH CAROLINA
DIVISION OF HIGHWAYS

WAKE COUNTY

LOCATION: BRIDGE NO. 336 OVER TERRIBLE CREEK
AND APPROACHES ON SR 1301 (SUNSET LAKE ROAD)

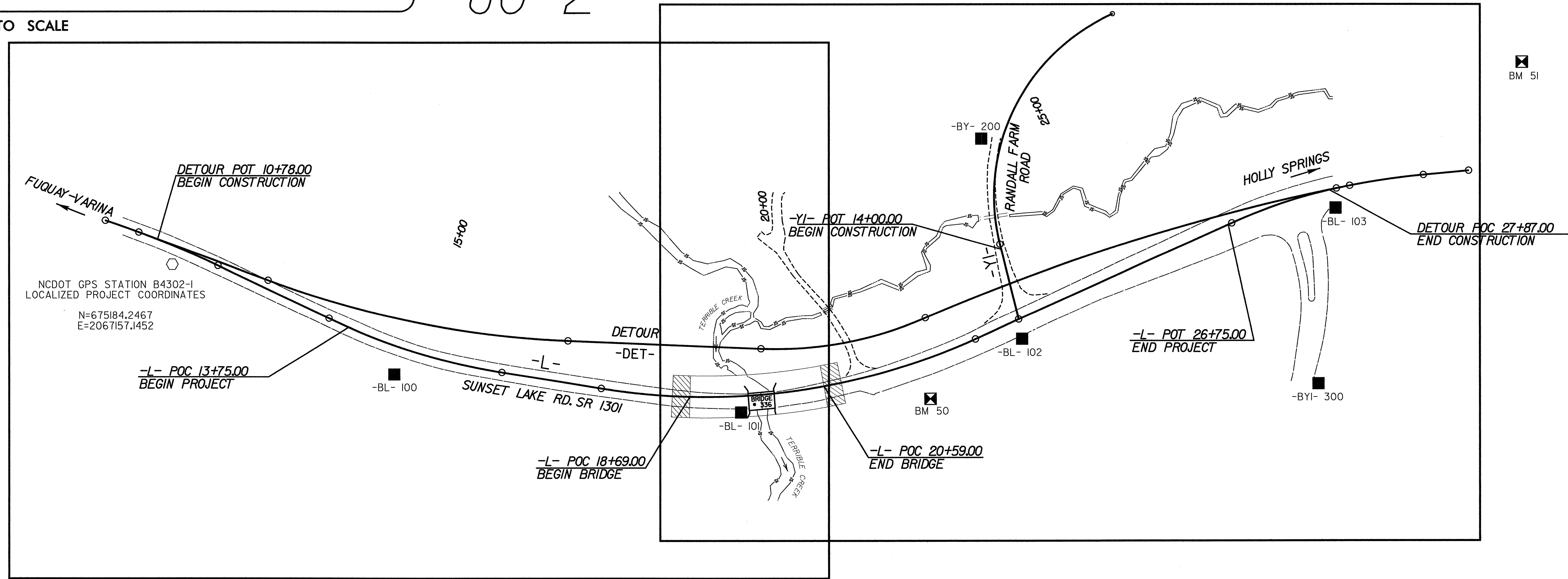
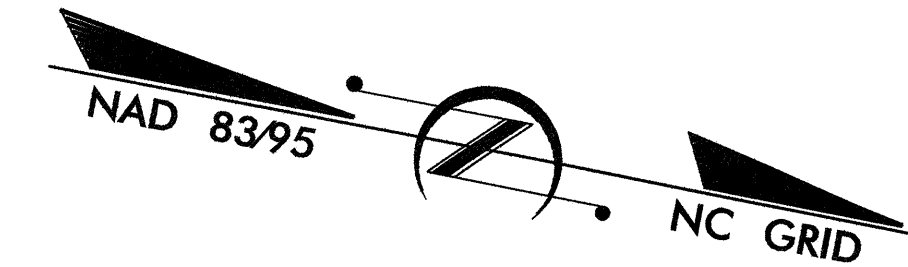


VICINITY MAP

NOT TO SCALE

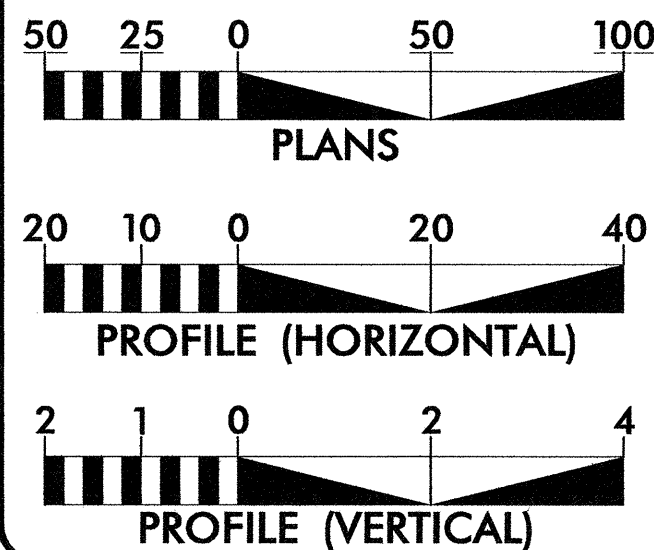
UO-2

UO-3



NOTE: DRAWING NOT TO SCALE

GRAPHIC SCALES



INDEX OF SHEETS

SHEET NO.	DESCRIPTION
UO-1	TITLE SHEET
UO-2, UO-3	UO PLAN SHEETS

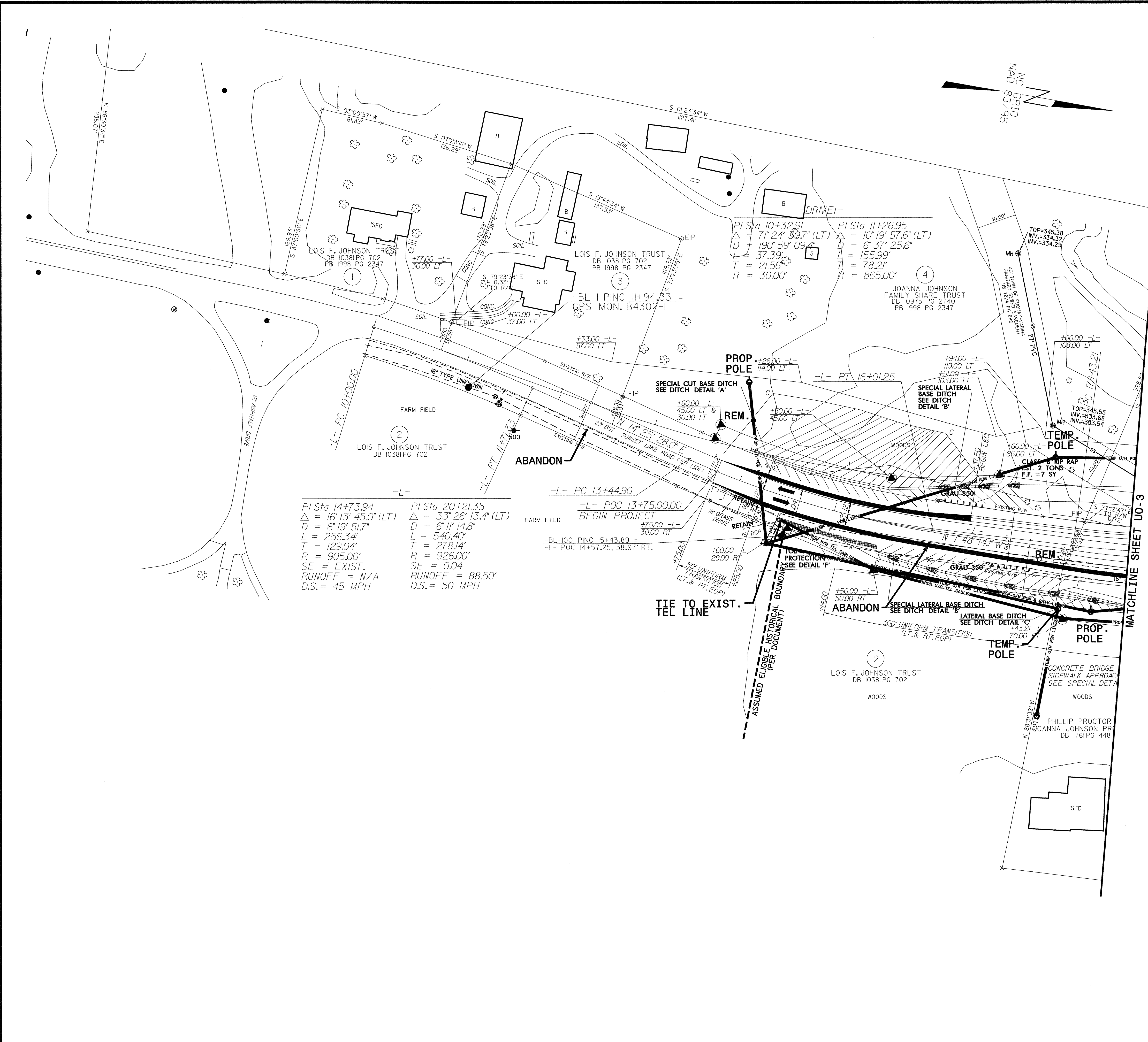
UTILITY OWNERS ON PROJECT

EMBARQ	JOSH STURTZ 531 SHAWCROFT ROAD FAYETTEVILLE, NC 28311 910-797-1695	PSNC ENERGY	FRANCES V. GRIMSLEY 2451 SCHIEFFELIN ROAD APEX, NC 27502 919-367-2714
PROGRESS ENERGY	RAY PIGOTT 1020 W. CHATHAM ST. CARY, NC 27511 919-481-6117	TIME WARNER CABLE	BOB LILLIS 1100 PERIMETER PARK, SUITE 118 MORRISVILLE, NC 27560 919-573-7018

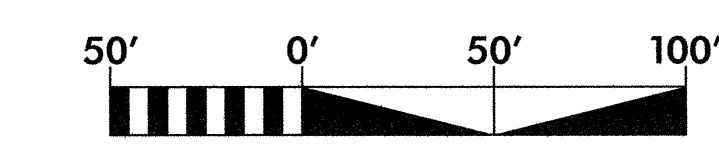
UTILITY DESIGN BY:

NCDOT PROJECT ENGINEER:
RONALD B. WILKINS, P.E.
PREPARED FOR:
NORTH CAROLINA
DEPARTMENT OF TRANSPORTATION
PROJECT SERVICES UNIT
RALEIGH, NC

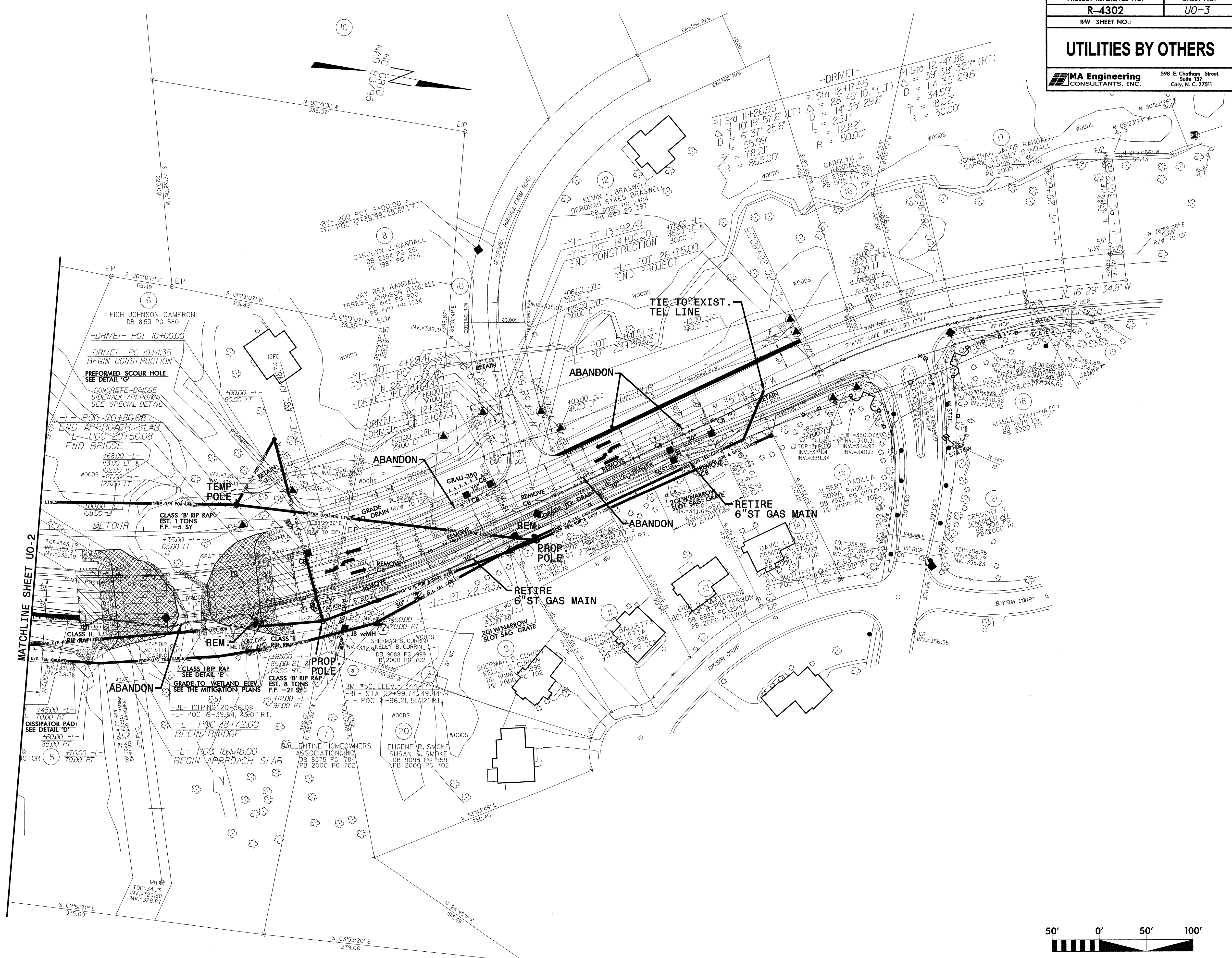
7/2/99



MATCHLINE SHEET UO-3



7/22/99



MATCHLINE SHEET UO-2

