

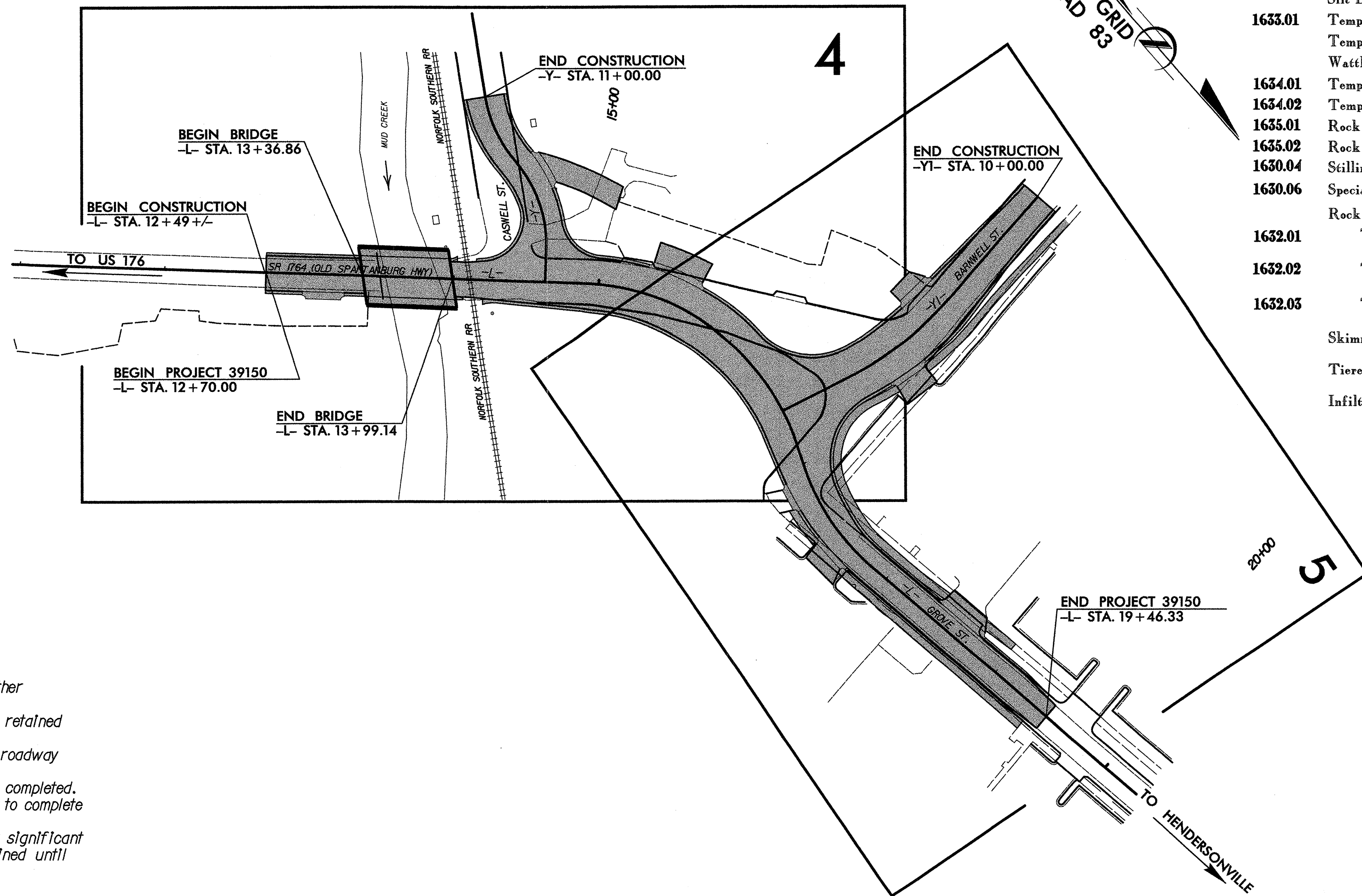
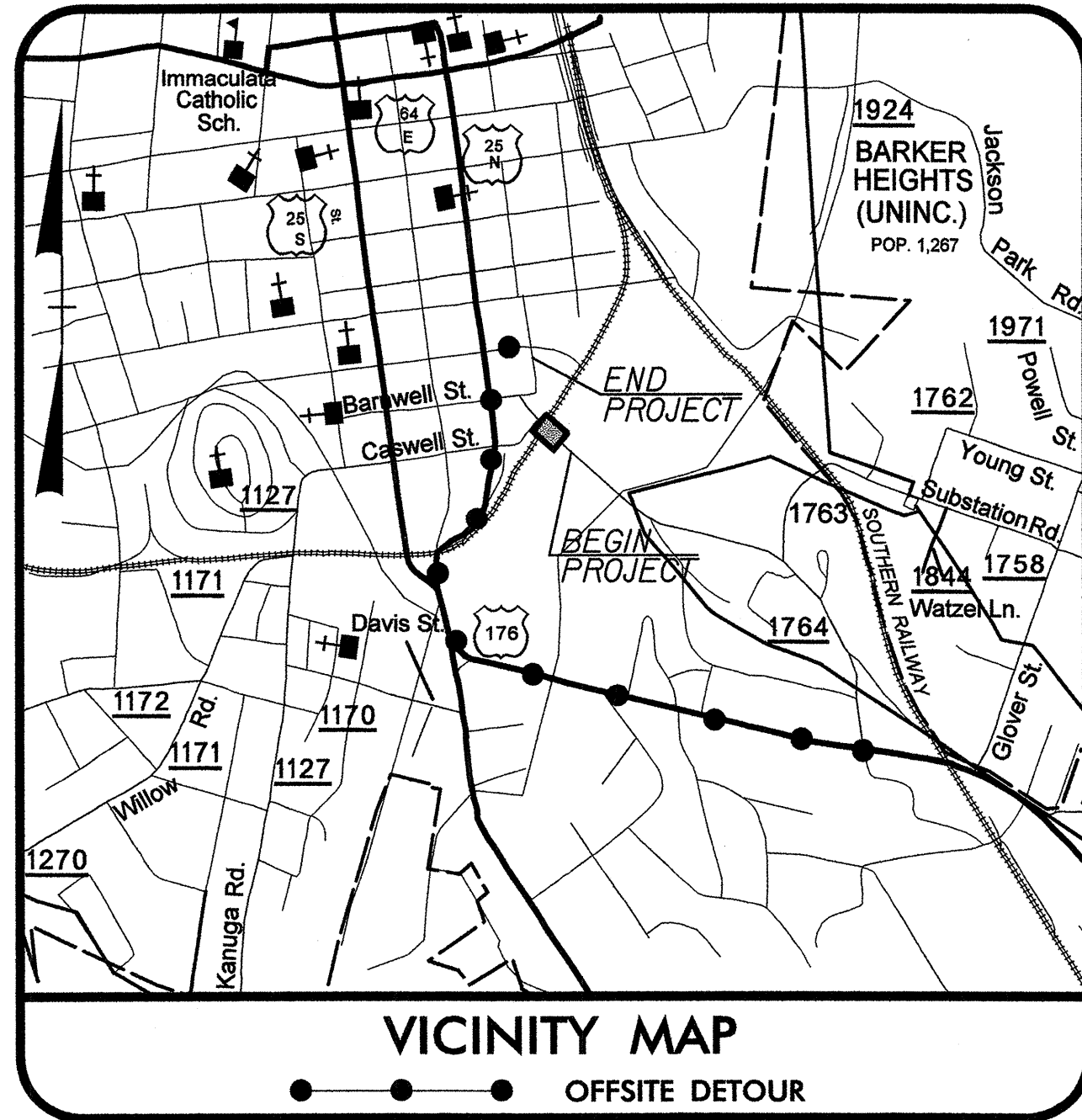
STATE	STATE PROJECT REFERENCE NO.	SHEET NO.	TOTAL SHEETS
N.C.	B-5180	EC-1	
STATE PROJ. NO.	F.A. PROJ. NO.	DESCRIPTION	
47015		PE,RW,CONST.	

STATE OF NORTH CAROLINA
DIVISION OF HIGHWAYS

PLAN FOR PROPOSED
HIGHWAY EROSION CONTROL

HENDERSON COUNTY

LOCATION: BRIDGE NO. 205 ON SR 1764 (OLD SPARTANBURG HWY) OVER MUD CREEK
TYPE OF WORK: GRADING, DRAINAGE, PAVING, & STRUCTURE



EROSION AND SEDIMENT CONTROL MEASURES

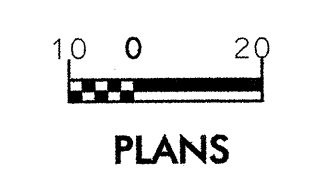
Sta. #	Description	Symbol
1630.03	Temporary Silt Ditch	TD
1630.05	Temporary Diversion	TD
1605.01	Temporary Silt Fence	
1606.01	Special Sediment Control Fence	
1622.01	Temporary Berms and Slope Drains	— T —
1630.01	Riser Basin	⊙
	Silt Basin Type B	▨
1633.01	Temporary Rock Silt Check Type-A	▨
	Temporary Rock Silt Check Type-B	▨
	Wattle	— W —
1634.01	Temporary Rock Sediment Dam Type-A	▨
1634.02	Temporary Rock Sediment Dam Type-B	▨
1635.01	Rock Pipe Inlet Sediment Trap Type-A	⊙
1635.02	Rock Pipe Inlet Sediment Trap Type-B	⊙
1630.04	Stilling Basin	▭
1630.06	Special Stilling Basin	▭
	Rock Inlet Sediment Trap:	
1632.01	Type A	A
1632.02	Type B	B
1632.03	Type C	C
	Skimmer Basin	▭
	Tiered Skimmer Basin	▭
	Infiltration Basin	▭

THIS PROJECT CONTAINS
EROSION CONTROL PLANS
FOR CLEARING AND
GRUBBING PHASE OF
CONSTRUCTION.

EROSION CONTROL SCHEDULE

Install erosion control measures according to plans in all outlets and at other discharge points after clearing but before grubbing. Clear and clean outfall ditches leaving slopes at an angle that can be retained by vegetation. These areas will require stage seeding and mulching. Begin grading of roadway ditches. Place erosion control measures along roadway ditches as grading progresses and conditions allow. Seed and mulch all disturbed areas as soon as any phase of grading is completed. (Note there are 15 working days or 30 calendar days (whichever is less) to complete seeding and mulching) Clean out and/or rework all temporary erosion control measures after any significant rainfall event (or as otherwise needed). These measures should be maintained until a permanent vegetative cover is established.

GRAPHIC SCALE



ROADSIDE ENVIRONMENTAL UNIT
DIVISION OF HIGHWAYS
STATE OF NORTH CAROLINA

Plans Prepared By:
TGS ENGINEERS
SUITE 141
975 WALNUT STREET
GARY, NC 27511
PH (919) 319-8850

Plans Prepared For:
NCDOT DIVISION 14
NCDOT Contact:
RALPH CANNADY
DIVISION PROJECT MANAGER

2006 STANDARD SPECIFICATIONS

CHARLES L. FLOWE, PE
PROJECT ENGINEER

W. T. STEPHENS, JR., PE
PROJECT DESIGN ENGINEER
LEVEL IIIA CERTIFICATION NO. 335

Roadway Standard Drawings

The following roadway english standards as appear in "Roadway Standard Drawings"— Roadway Design Unit - N. C. Department of Transportation - Raleigh, N. C., dated January 20, 2002 and the latest revision thereto are applicable to this project and by reference hereby are considered a part of these plans.

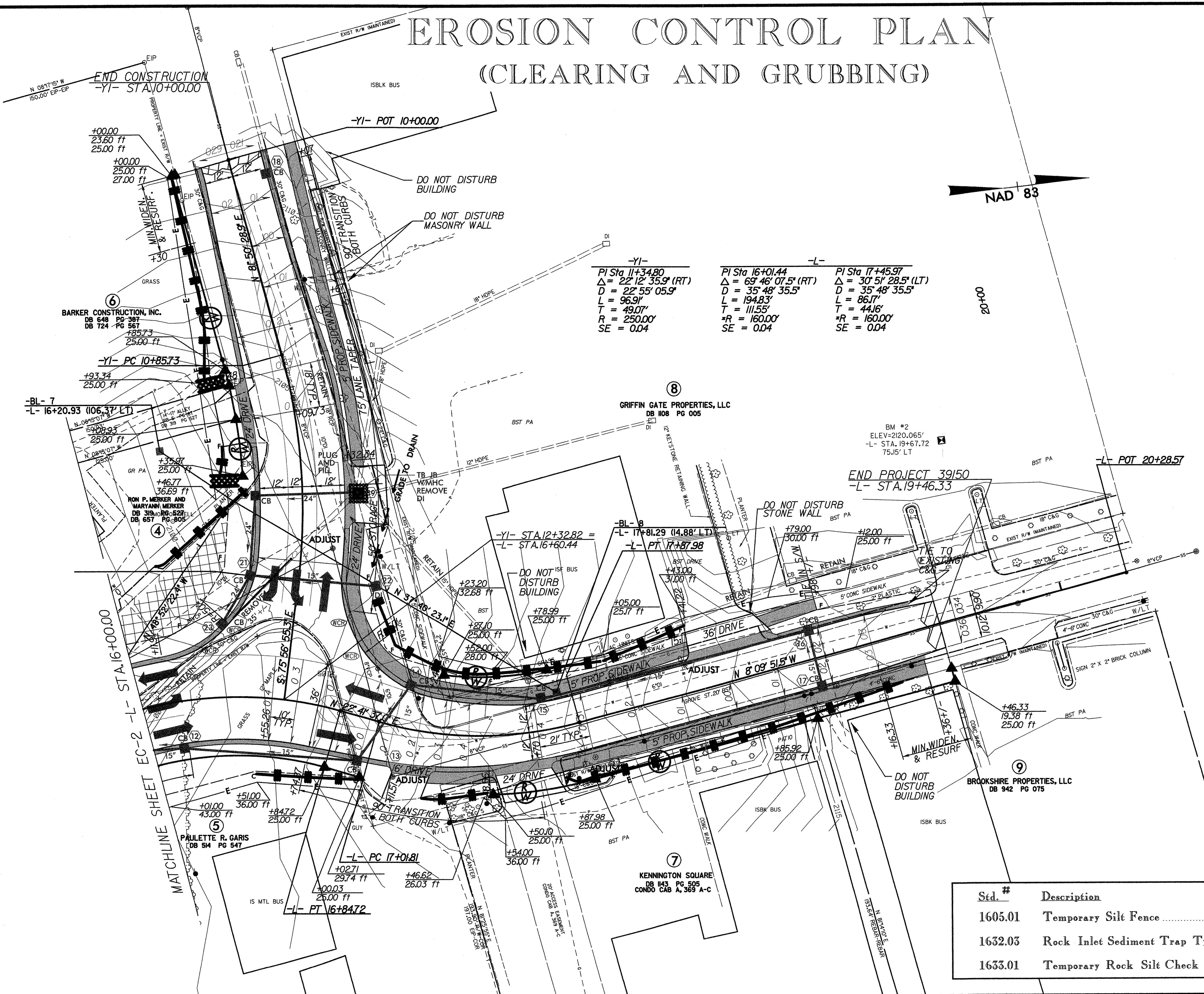
- 1605.01 Temporary Silt Fence
- 1607.01 Gravel Construction Entrance
- 1630.06 Special Stilling Basin
- 1632.03 Rock Inlet Sediment Trap Type C
- 1633.01 Temporary Rock Silt Check Type A

CONTRACT: 47015
 CONTRACT: C202141
 09/28/08
 \$\$\$ SYSTEM \$\$\$
 \$\$\$ DDGN \$\$\$
 \$\$\$ USER NAME \$\$\$

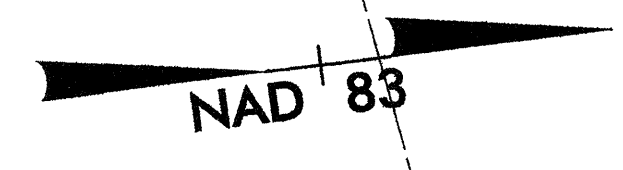
8/17/99

EROSION CONTROL PLAN (CLEARING AND GRUBBING)

PROJECT REFERENCE NO. B-5180	SHEET NO. EC-3
RW SHEET NO.	
ROADWAY DESIGN ENGINEER	HYDRAULICS ENGINEER



-YI-	-L-	-L-
PI Sta 11+34.80 Δ = 22° 12' 35.9" (RT) D = 22' 55' 05.9" L = 96.9' T = 49.07' R = 250.00' SE = 0.04	PI Sta 16+01.44 Δ = 69° 46' 07.5" (RT) D = 35' 48' 35.5" L = 194.83' T = 111.55' *R = 160.00' SE = 0.04	PI Sta 17+45.97 Δ = 30° 51' 28.5" (LT) D = 35' 48' 35.5" L = 86.17' T = 44.16' *R = 160.00' SE = 0.04



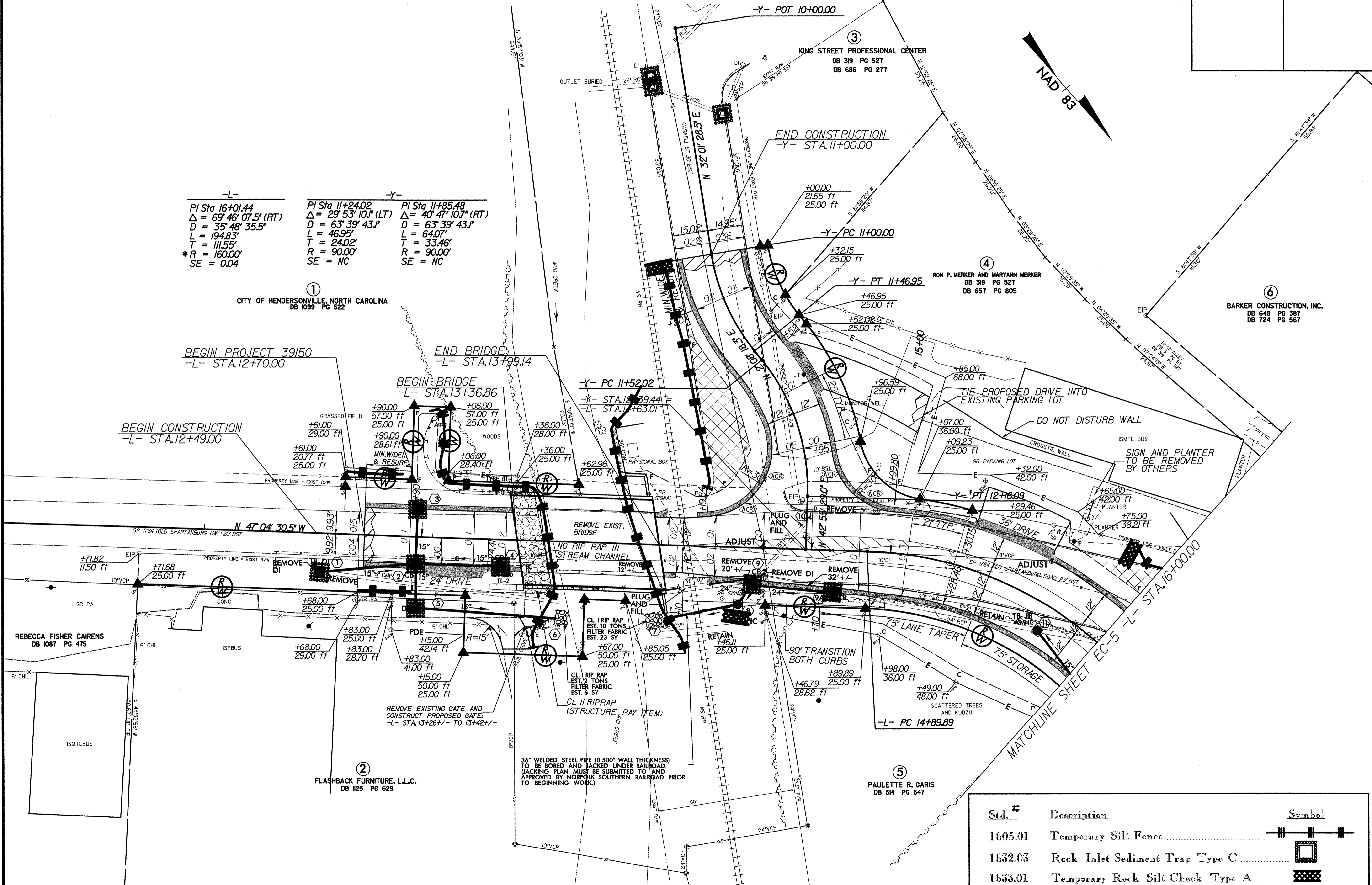
Std. #	Description	Symbol
1605.01	Temporary Silt Fence	
1632.03	Rock Inlet Sediment Trap Type C	
1633.01	Temporary Rock Silt Check Type A	

C:\PROJECTS\B-5180\EROSION\EROSION.DWG
 8/17/99 10:37:04 PM
 10/13/2008 12:37:04 PM

EROSION CONTROL PLAN

PROJECT REFERENCE NO. B-5180	SHEET NO. EC-4
RW SHEET NO.	
ROADWAY DESIGN ENGINEER	HYDRAULICS ENGINEER

-L-	-Y-	-Y-
PI Sta 16+01.44	PI Sta 11+24.02	PI Sta 11+85.48
$\Delta = 69^\circ 46' 07.5" (RT)$	$\Delta = 29^\circ 53' 10.1" (LT)$	$\Delta = 40^\circ 47' 10.7" (RT)$
D = 35' 48" 35.5"	D = 63' 39" 43.1"	D = 63' 39" 43.1"
L = 194.83'	L = 46.95'	L = 64.07'
T = 11.55'	T = 24.02'	T = 33.46'
*R = 160.00'	R = 90.00'	R = 90.00'
SE = 0.04	SE = NC	SE = NC



Std. #	Description	Symbol
1605.01	Temporary Silt Fence	
1632.03	Rock Inlet Sediment Trap Type C	
1633.01	Temporary Rock Silt Check Type A	

