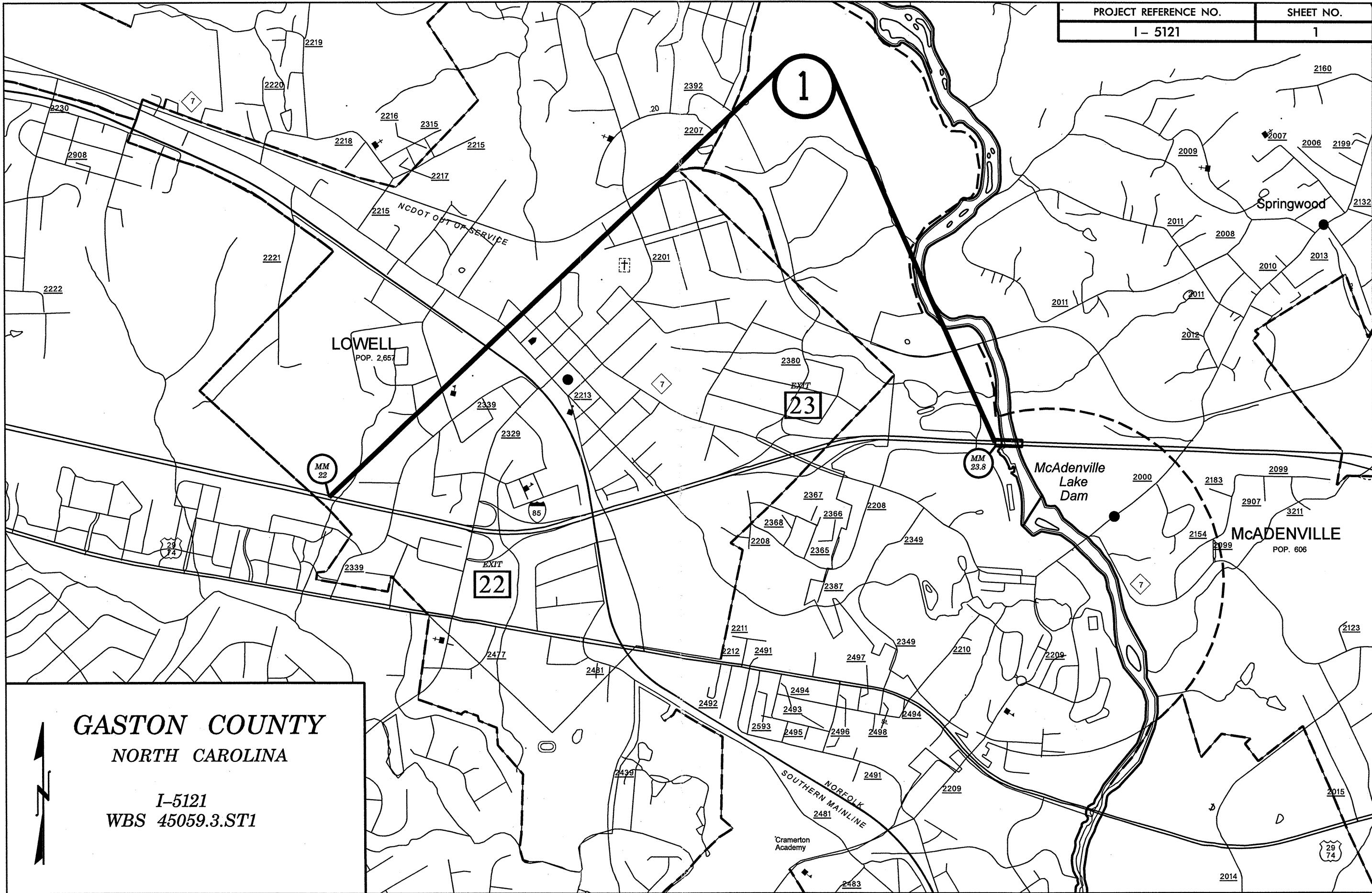


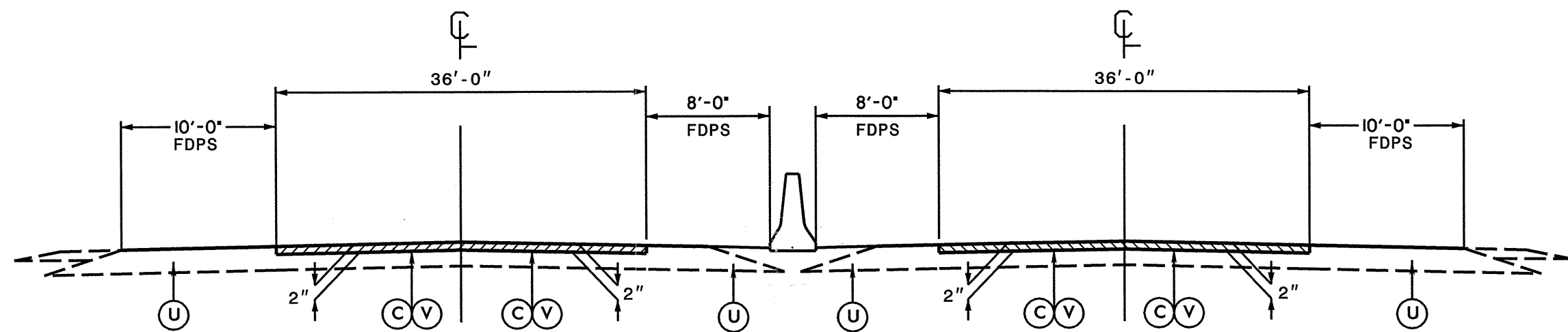
PROJECT REFERENCE NO.	SHEET NO.
I- 5121	1



GASTON COUNTY
 NORTH CAROLINA

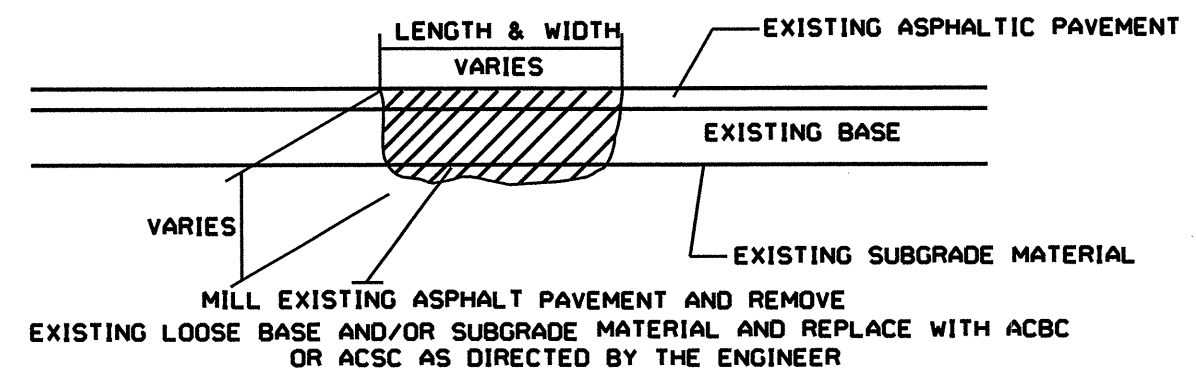
 I-5121
 WBS 45059.3.ST1





TYPICAL SECTION NO. 1

USE TYPICAL SECTION NO. 1 FROM MM 22 TO CONCRETE BRIDGES OVER THE SOUTHFORK RIVER



PATCHING EXISTING PAVEMENT

C	PROP. APPROX. 2" ASPHALT CONCRETE SURFACE COURSE, TYPE S9.5D, AT AN AVERAGE RATE OF 224 LBS. PER SQ. YD.
U	EXISTING PAVEMENT.
V	MILLING BITUMINOUS PAVEMENT. 2" DEPTH.

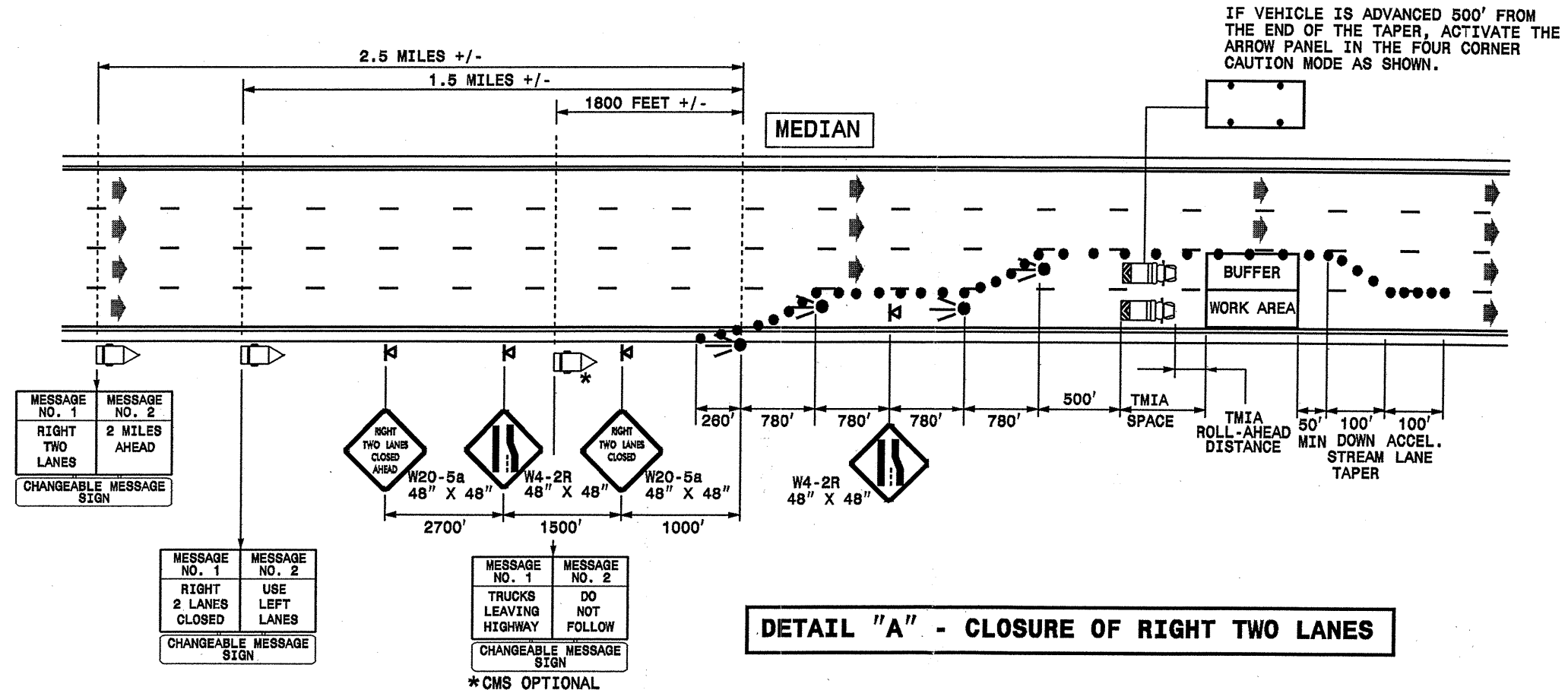
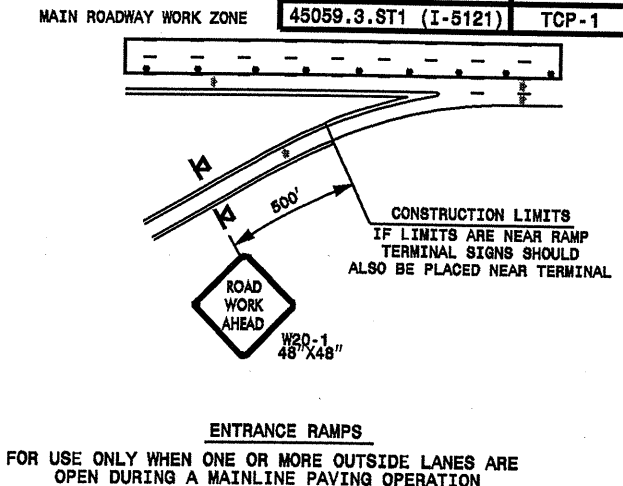
PROJECT NO.	SHEET NO.	TOTAL NO.
I - 5121	3	

SUMMARY OF QUANTITIES

PROJECT NO	COUNTY	MAP NO	ROUTE	DESCRIPTION	TYP NO	LENGTH MI	WIDTH FT	2" MILLING SY	SURFACE COURSE, S9.5D TONS	PG 76-22 PLANT MIX TONS	PATCHING EXISTING PAVEMENT TONS	PORTABLE LIGHTING LS
45059.3.ST1	Gaston	1	I-85	MILE MARKER 22 TO MILE MARKER 23.8	1	1.836	36	77,600	8,700	480	450	*
TOTAL FOR PROJ NO. 45059.3.ST1						1.836		77,600	8,700	480	450	1
GRAND TOTAL						1.836		77,600	8,700	480	450	1

THERMOPLASTIC AND PAINT QUANTITIES

PROJECT NO	COUNTY	MAP NO	ROUTE	DESCRIPTION	4415000000-N	4420000000-N	4430000000-N	4480000000-N	4688000000-E		4690000000-E	4700000000-E	4905000000-N
					FLASHING ARROW PANELS, TYPE C EA	CHANGEABLE MESSAGE SIGNS EA	DRUMS EA	TMIA EA	6" X 90 M YELLOW THERMO LF	6" X 90M WHITE THERMO LF	6" X 120M WHITE THERMO LF	12" X 90 M WHITE THERMO LF	SNOW PLOWABLE MARKERS EA
45059.3.ST1	Gaston	1	I-85	MILE MARKER 22 TO MILE MARKER 23.8	1	1	300	1	19,500	19,500	9,700	1,600	700
TOTAL FOR PROJ NO. 45059.3.ST1					1	1	300	1	19,500	19,500	9,700	1,600	700
GRAND TOTAL					1	1	300	1	19,500	19,500	9,700	1,600	700

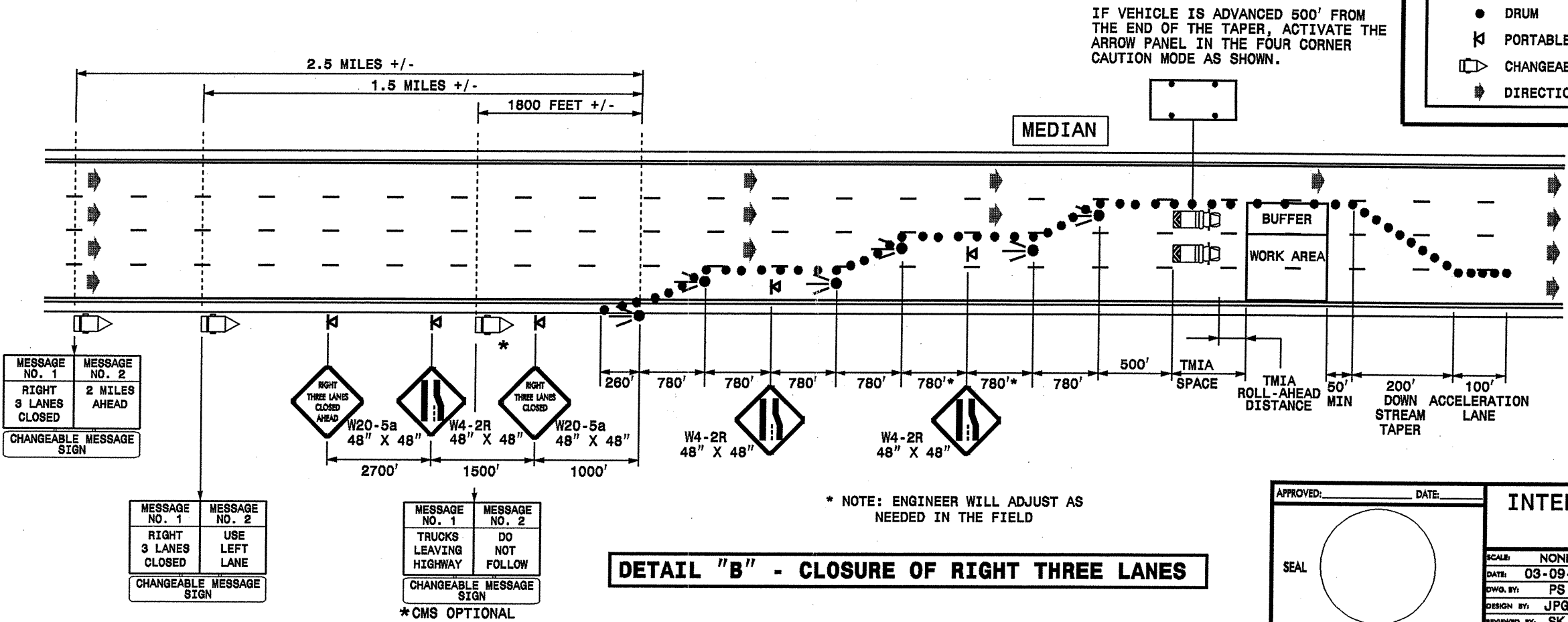


GENERAL NOTES

- 1-Refer to Notes on Rdwy Std 1101.02 Sheet 3 of 9.
- 2-Coordinate use of overhead DMSs with the Division.
- 3-Use following configuration for FAP (Flashing Arrow Panel)
- 4-Symbols shown are for Right Lane Closure, use appropriate signs, messages and arrows for Left Lane Closure. Portable CMSs to remain positioned as shown.

LEGEND

- FLASHING ARROW PANEL (TYPE C)
- TRUCK MOUNTED IMPACT ATTENUATOR (TMIA)
- DRUM
- PORTABLE SIGN
- CHANGEABLE MESSAGE SIGN (CMS)
- DIRECTION OF TRAFFIC FLOW



APPROVED: _____ DATE: _____

SEAL

INTERSTATE DUAL/TRIPLE LANE CLOSURE

SCALE: NONE
DATE: 03-09-06
DWD. BY: PS
DESIGN BY: JPG
REVIEWED BY: SK

REVISIONS
03-09

02-APR-2009 11:12
S:\signing\resur\facimg\2009\dw12\c202291_450593st1\I-5121\qaston\I-85\c202291_450593st1\I-5121_14918_top2_doublelap_no250.dgn
P:\more AT 12\1231502