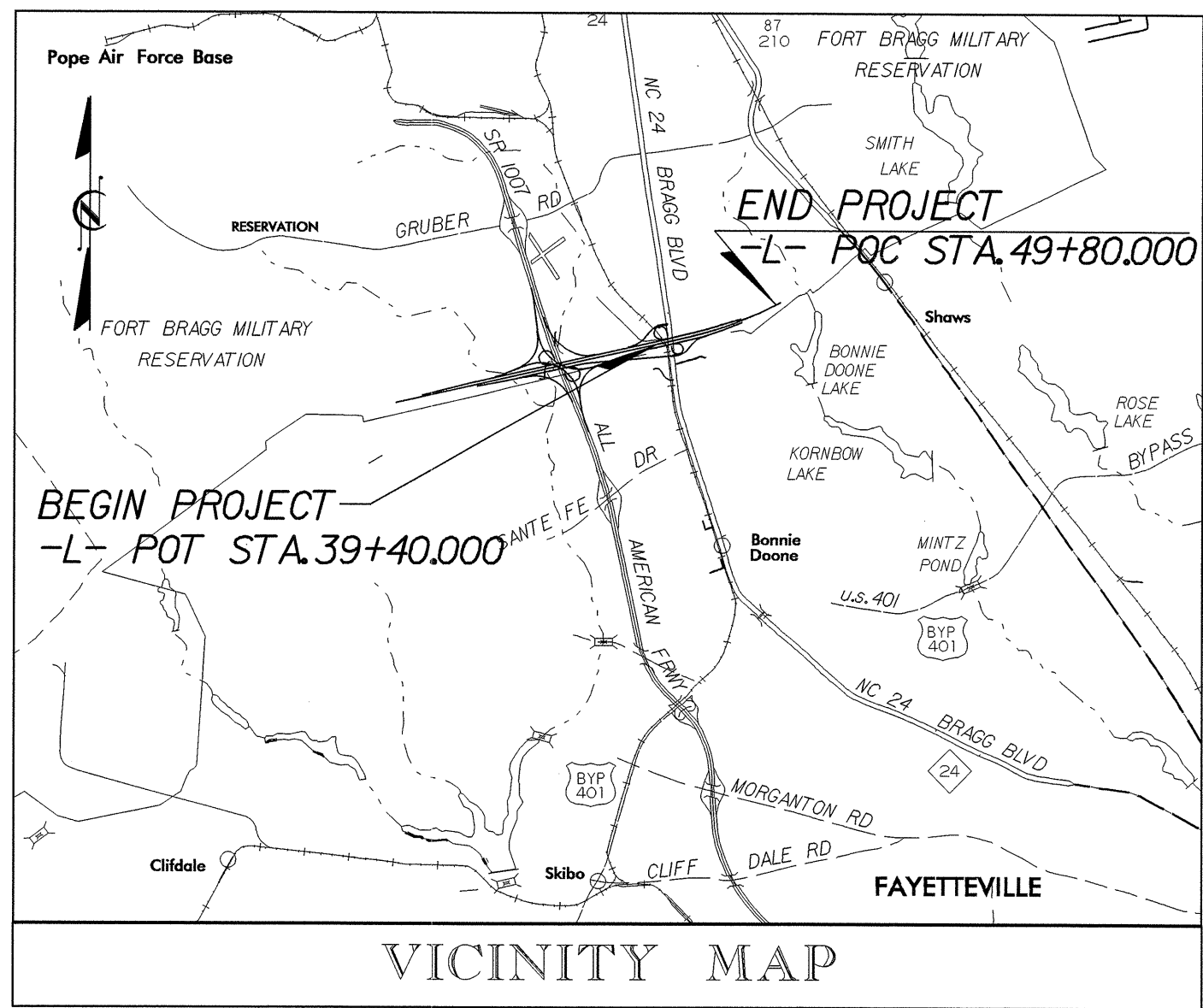


9/09/99

TIP PROJECT: U-2519E

CONTRACT: C201977

See Sheet 1-A For Index of Sheets



STATE OF NORTH CAROLINA
DIVISION OF HIGHWAYS

**UTILITY BY OTHERS PLANS
CUMBERLAND COUNTY**

**LOCATION: FAYETTEVILLE OUTER LOOP FROM WEST OF
NC 24 TO EAST OF NC 24 (BRAGG BOULEVARD)**

TYPE OF WORK: UTILITIES BY OTHERS

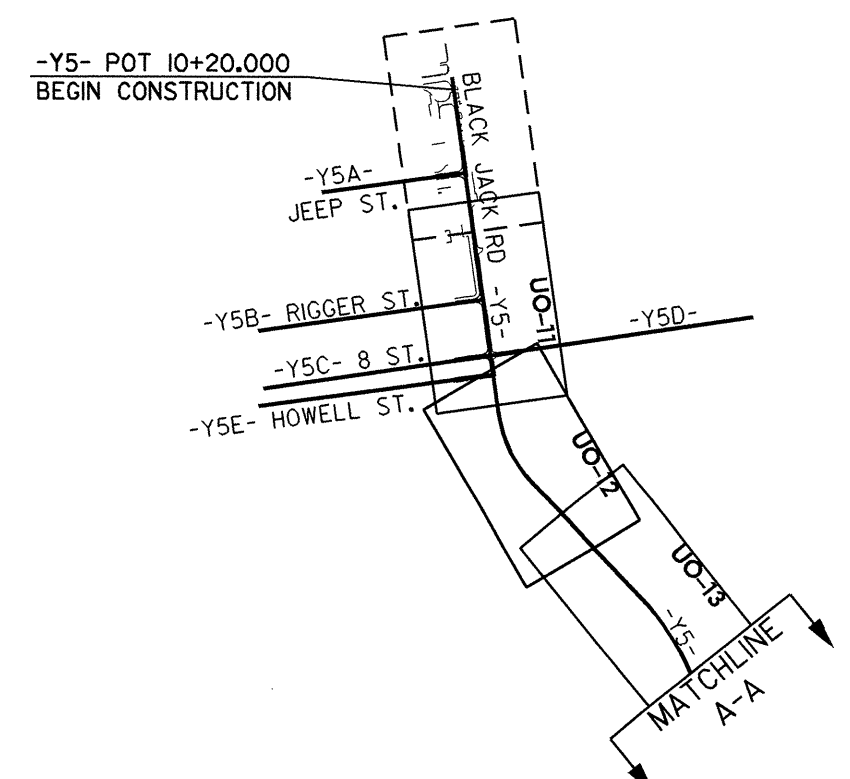
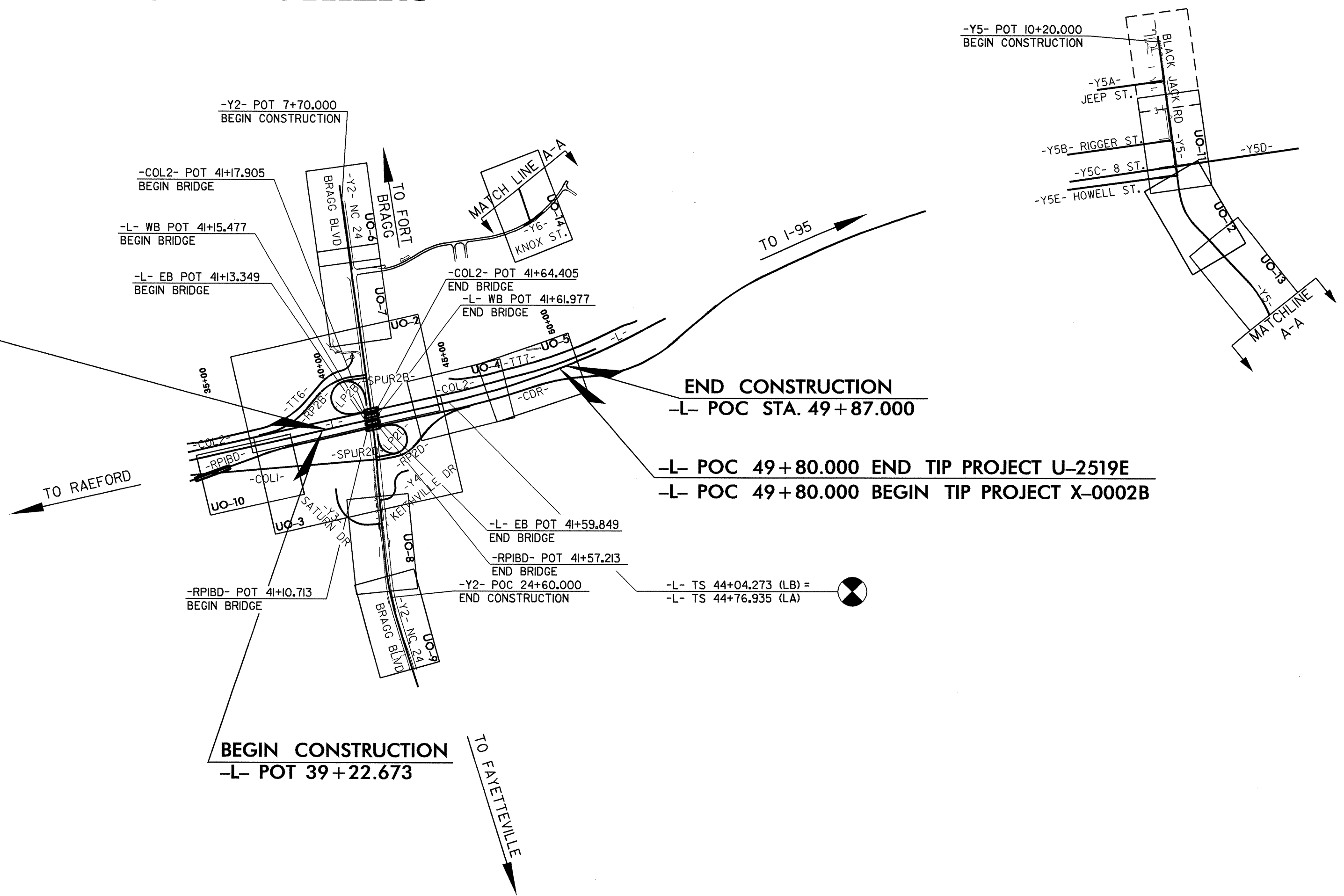
METRIC
ALL DIMENSIONS IN
THESE PLANS ARE IN METERS
AND/OR MILLIMETERS
UNLESS OTHERWISE SHOWN

T.I.P. NO.	SHEET NO.
U-2519E	UO-1

PART 1 OF 2

THIS IS A CONTROLLED ACCESS PROJECT WITH ACCESS LIMITED TO INTERCHANGES.

-L- POT 39+40.000 BEGIN TIP PROJECT U-2519E
-L- POT 39+40.000 END TIP PROJECT U-2519DA



GRAPHIC SCALES

5 0 10
PLANS

5 0 10
PROFILE (HORIZONTAL)

1 0 2
PROFILE (VERTICAL)

INDEX OF SHEETS

SHEET NO.	DESCRIPTION
UO-1	TITLE SHEET
UO-2 THRU UO-14	UTILITY BY OTHERS PLAN SHEETS

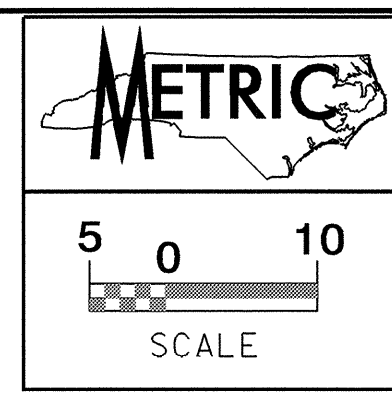
- UTILITY OWNERS ON PROJECT**
- (1) PROGRESS ENERGY - POWER DISTRIBUTION
 - (2) PROGRESS ENERGY - TRANSMISSION
 - (3) EMBARQ - TELEPHONE
 - (4) LEVEL 3 COMMUNICATIONS - TELEPHONE
 - (5) PIEDMONT NATURAL GAS COMPANY - GAS
 - (6) SANDHILL UTILITIES - POWER DISTRIBUTION FORT BRAGG
 - (7) FORT BRAGG - TELEPHONE
 - (8) FORT BRAGG - GAS
 - (9) TIME WARNER CABLE - CABLE TV
 - (10) OLD NORTH UTILITIES SERVICES, INC. - FORT BRAGG WATER AND SANITARY SEWER

PREPARED IN THE OFFICE OF:
**DIVISION OF HIGHWAYS
PROJECT SERVICES
UTILITY SECTION**

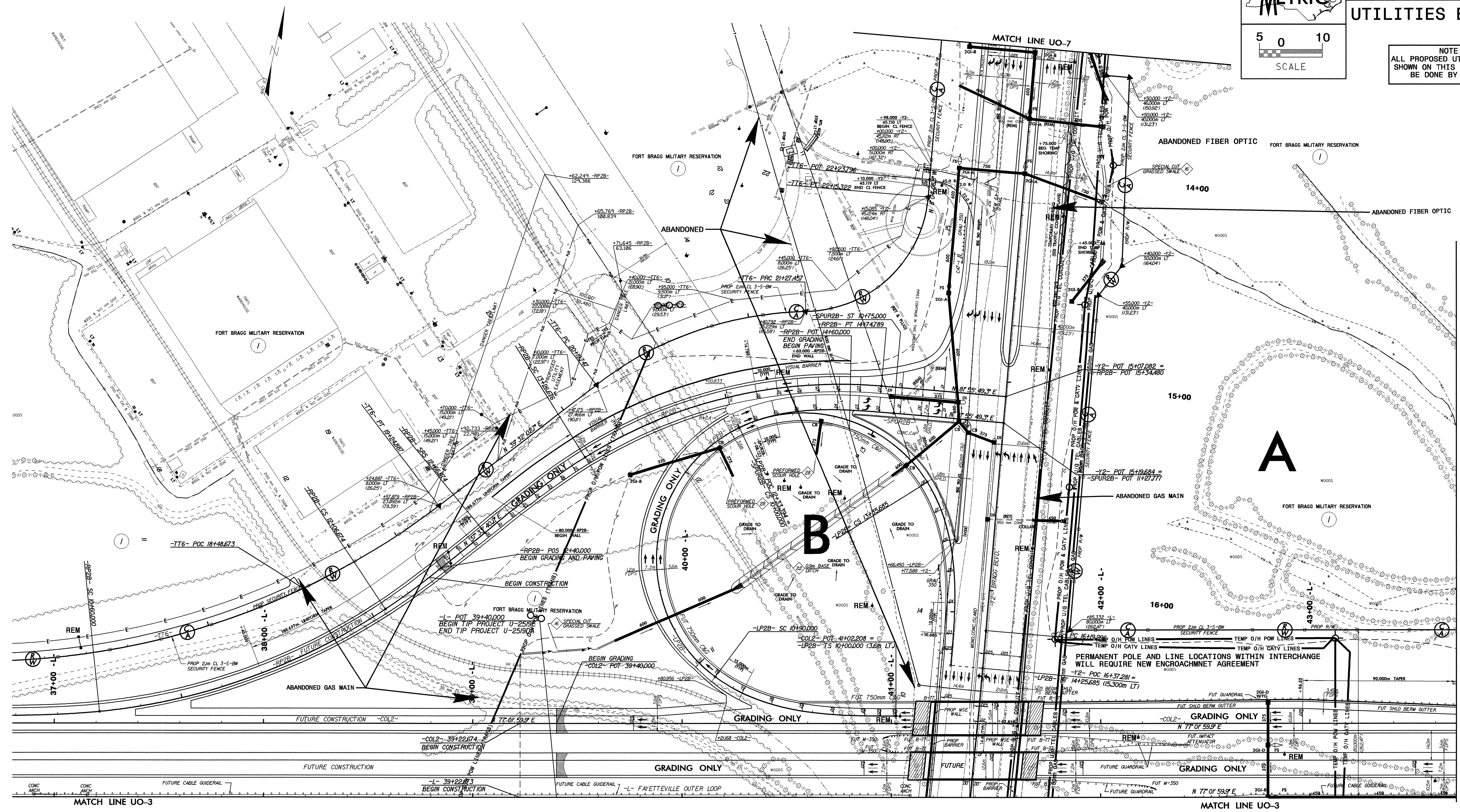
1591 MAIL SERVICES CENTER
RALEIGH NC 27699-1591
PHONE (919) 250-4128
FAX (919) 250-4119

Roger Worthington, P.E. UTILITIES SECTION ENGINEER
R. B. Wilkins, P.E. UTILITIES SQUAD LEADER PROJECT ENGINEER
John A. Nigro, P.E. UTILITIES PROJECT DESIGNER

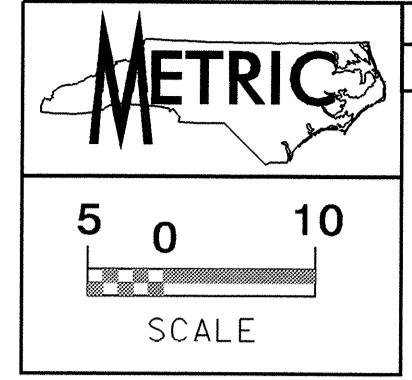
03-MAR-2009 17:30
C:\ut\1\trng\proj\U2519e-ut-ttle.uo1.psh.dgn



NOTE:
ALL PROPOSED UTILITY WORK
SHOWN ON THIS SHEET WILL
BE DONE BY OTHERS

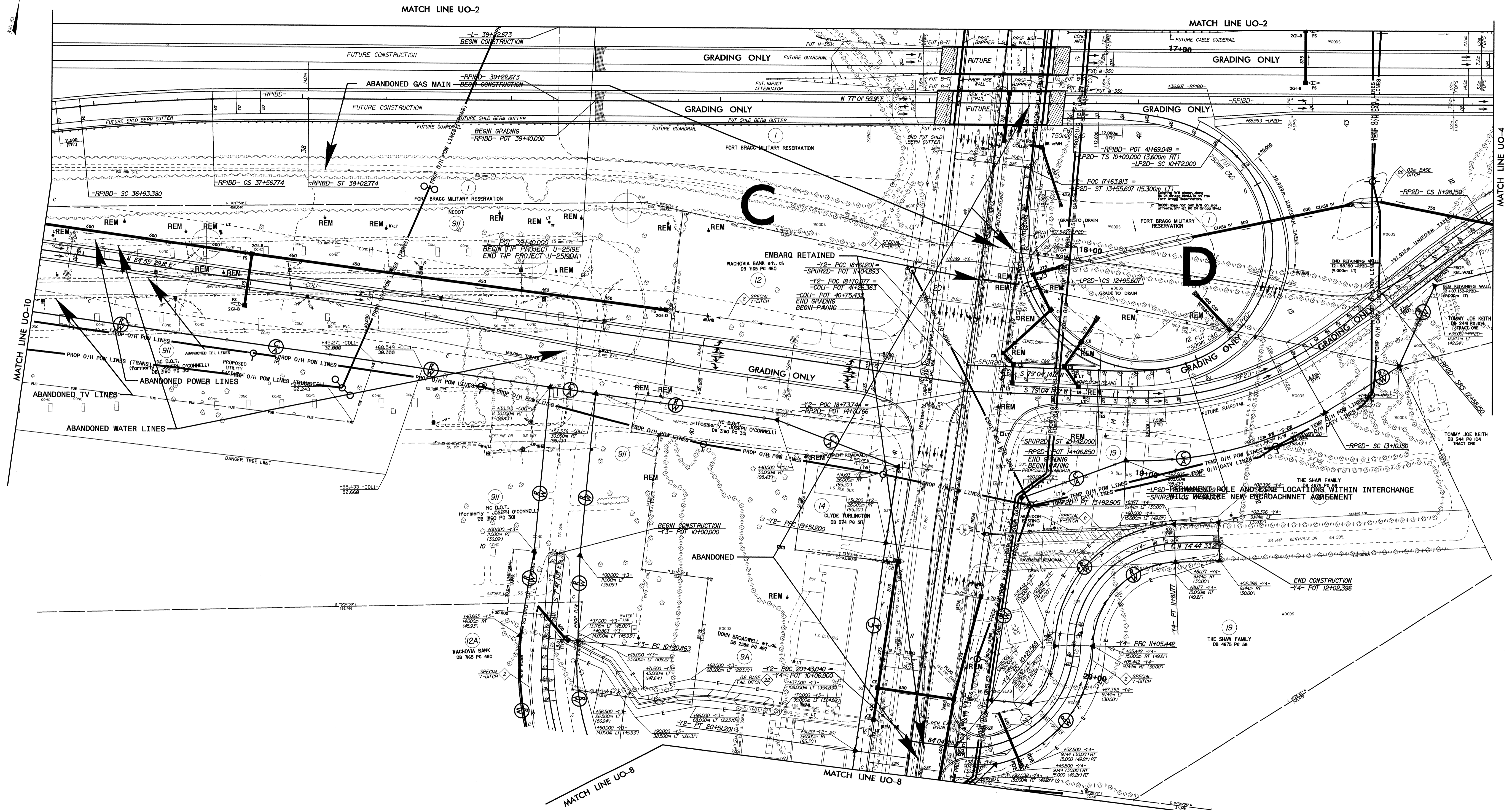


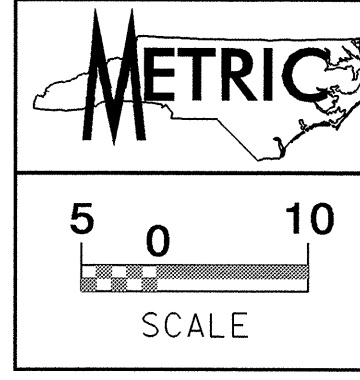
03-MAR-2009 10:02
r:\utilities\p2519e\grading and structures\p2519e_ut_4.uoc_pah.dgn
p2519e_ut_4.uoc_pah.dgn



UTILITIES BY OTHERS

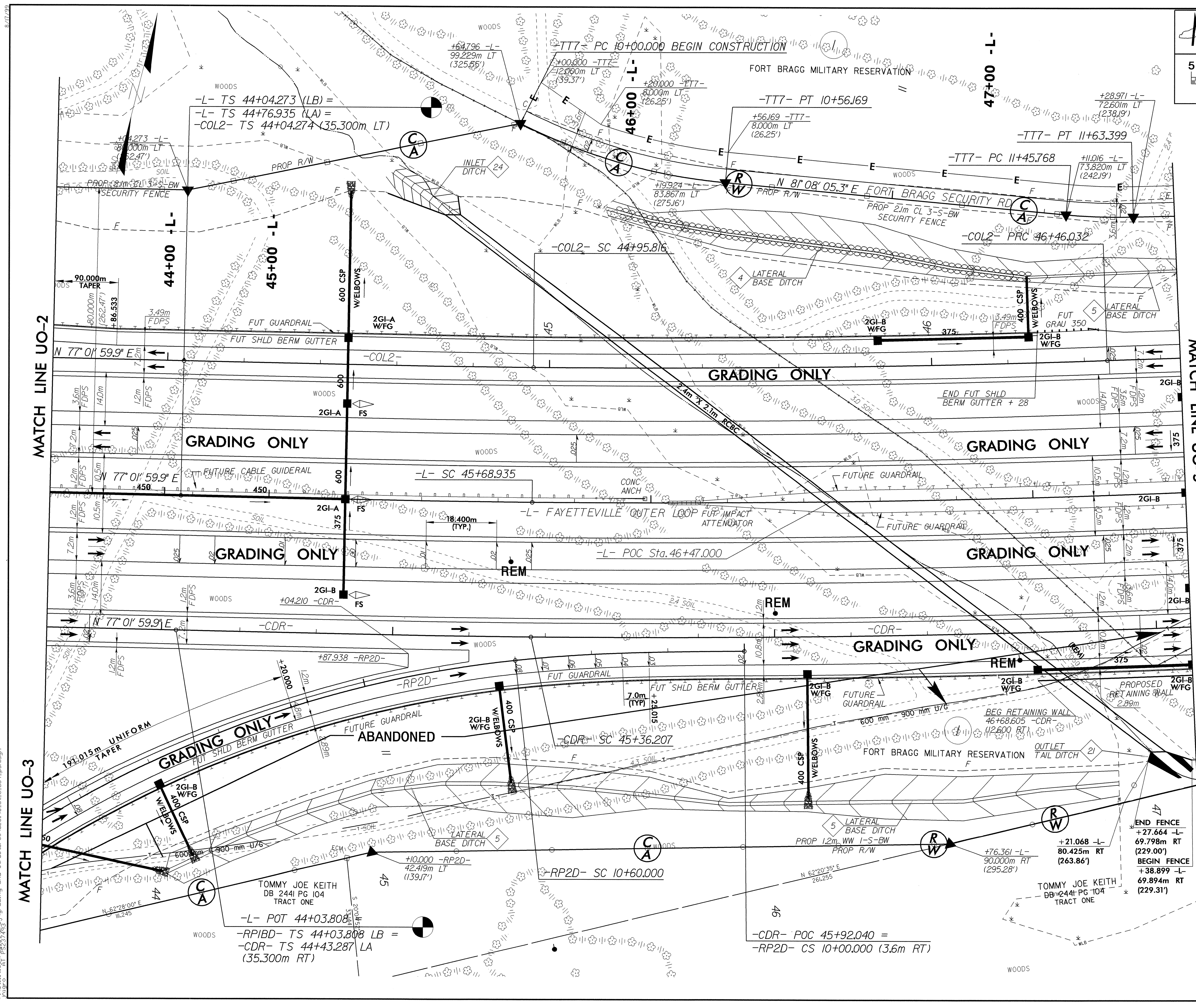
NOTE:
ALL PROPOSED UTILITY WORK
SHOWN ON THIS SHEET WILL
BE DONE BY OTHERS



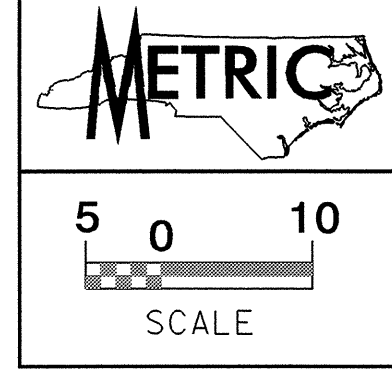


UTILITIES BY OTHERS

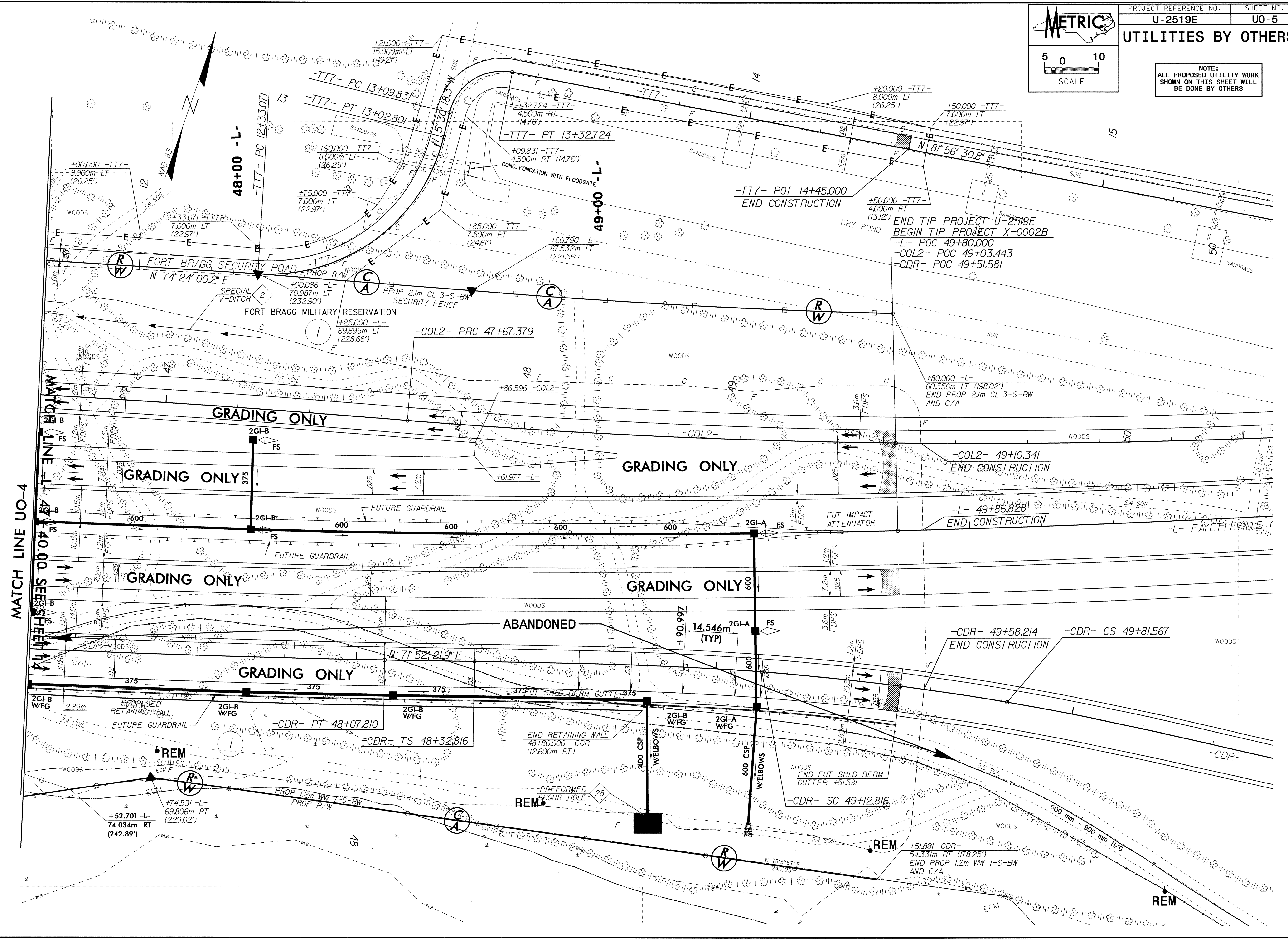
NOTE:
ALL PROPOSED UTILITY WORK
SHOWN ON THIS SHEET WILL
BE DONE BY OTHERS



01-MAR-2009 10:08
D:\Utilities\Projects\Grading and structures\U2519e-ut-6-uo4-psh.dgn

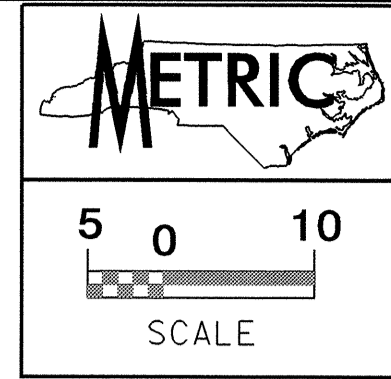


NOTE:
ALL PROPOSED UTILITY WORK
SHOWN ON THIS SHEET WILL
BE DONE BY OTHERS



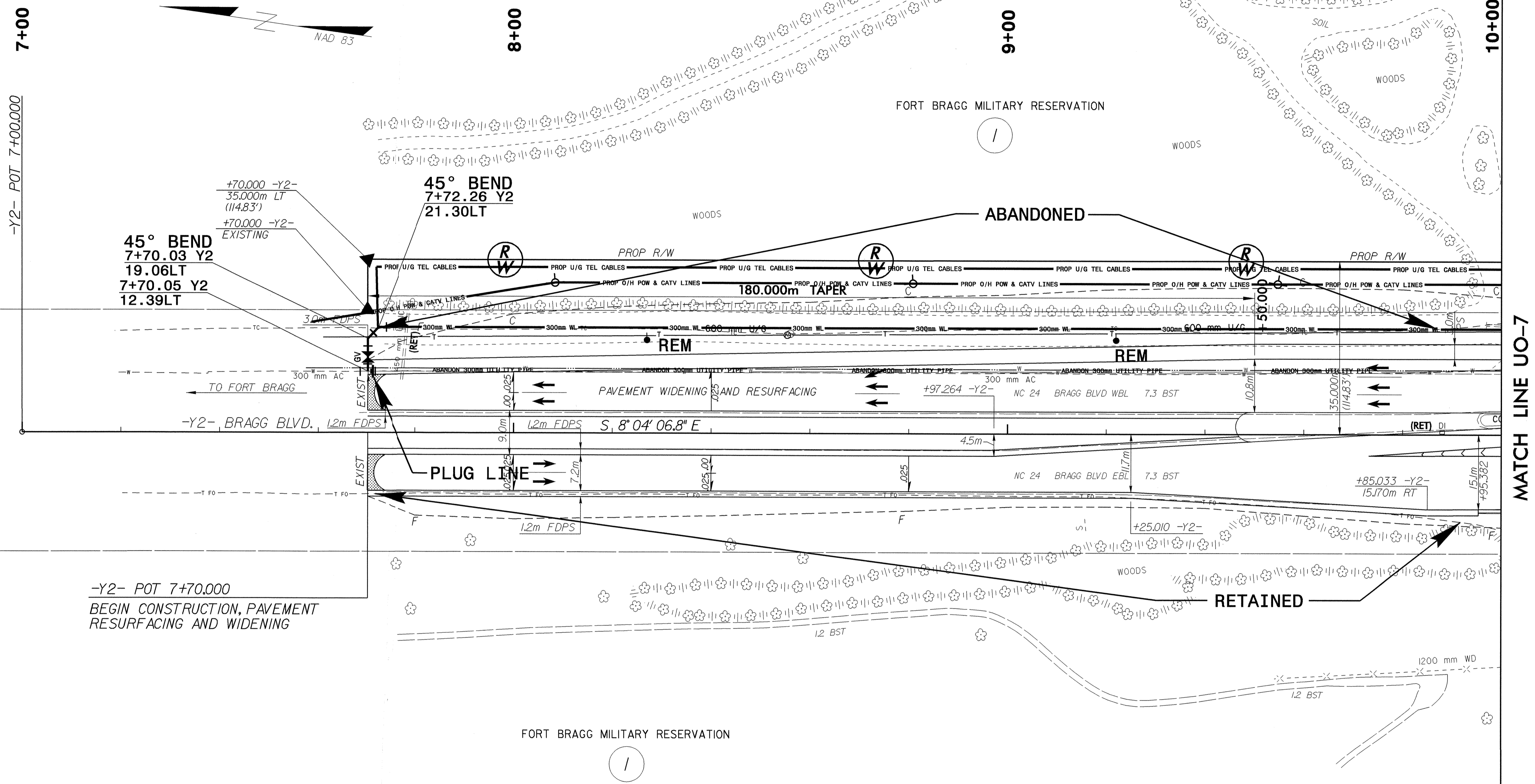
MATCH LINE UO-4
MATCH LINE UO-3

03-MAR-2009 14:2
r:\utility\tag\2519e\grading and structures\2519e_ut_7_u05_psh.dgn
plogo RT 15237485




PROJECT REFERENCE NO.	SHEET NO.
U-2519E	U0-6
UTILITIES BY OTHERS	

NOTE:
ALL PROPOSED UTILITY WORK
SHOWN ON THIS SHEET WILL
BE DONE BY OTHERS



8/17/09

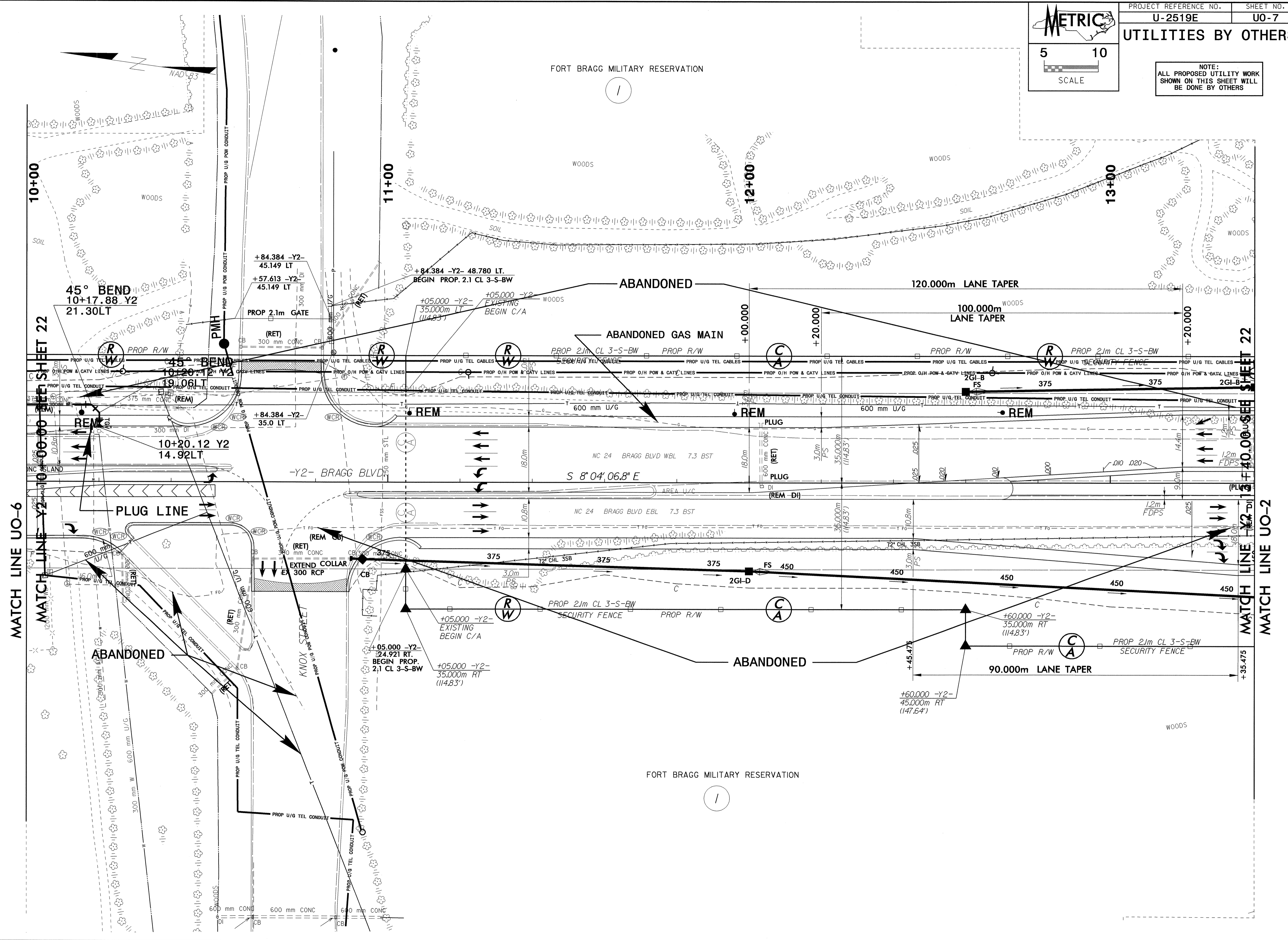
03-MAR-2009 14:20
r:\utility\2519e\grading and structures\2519e-rt-5-uo6-ph.dgn



5 10
SCALE

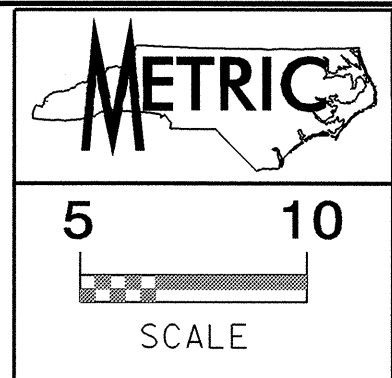
UTILITIES BY OTHERS

NOTE:
ALL PROPOSED UTILITY WORK
SHOWN ON THIS SHEET WILL
BE DONE BY OTHERS



8/17/09

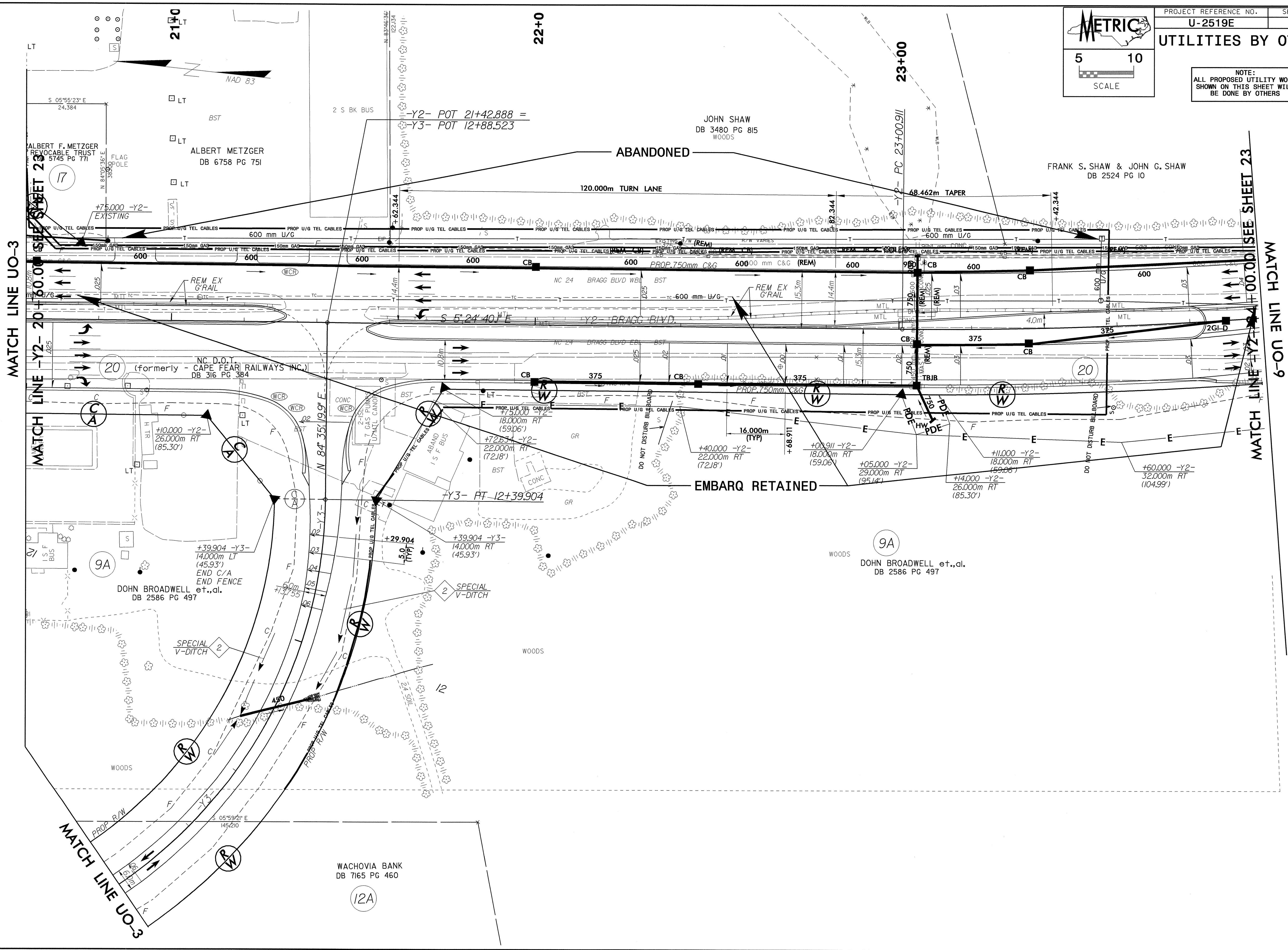
03-MAR-2009 11:23
r:\ut\l\tr\p\2519e\2519e\j\grading and structures\2519e_ut_9_uo7_psh.dgn



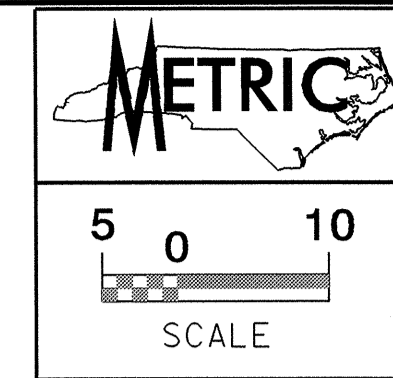
PROJECT REFERENCE NO.	SHEET NO.
U-2519E	U0-8

UTILITIES BY OTHERS

NOTE:
ALL PROPOSED UTILITY WORK
SHOWN ON THIS SHEET WILL
BE DONE BY OTHERS

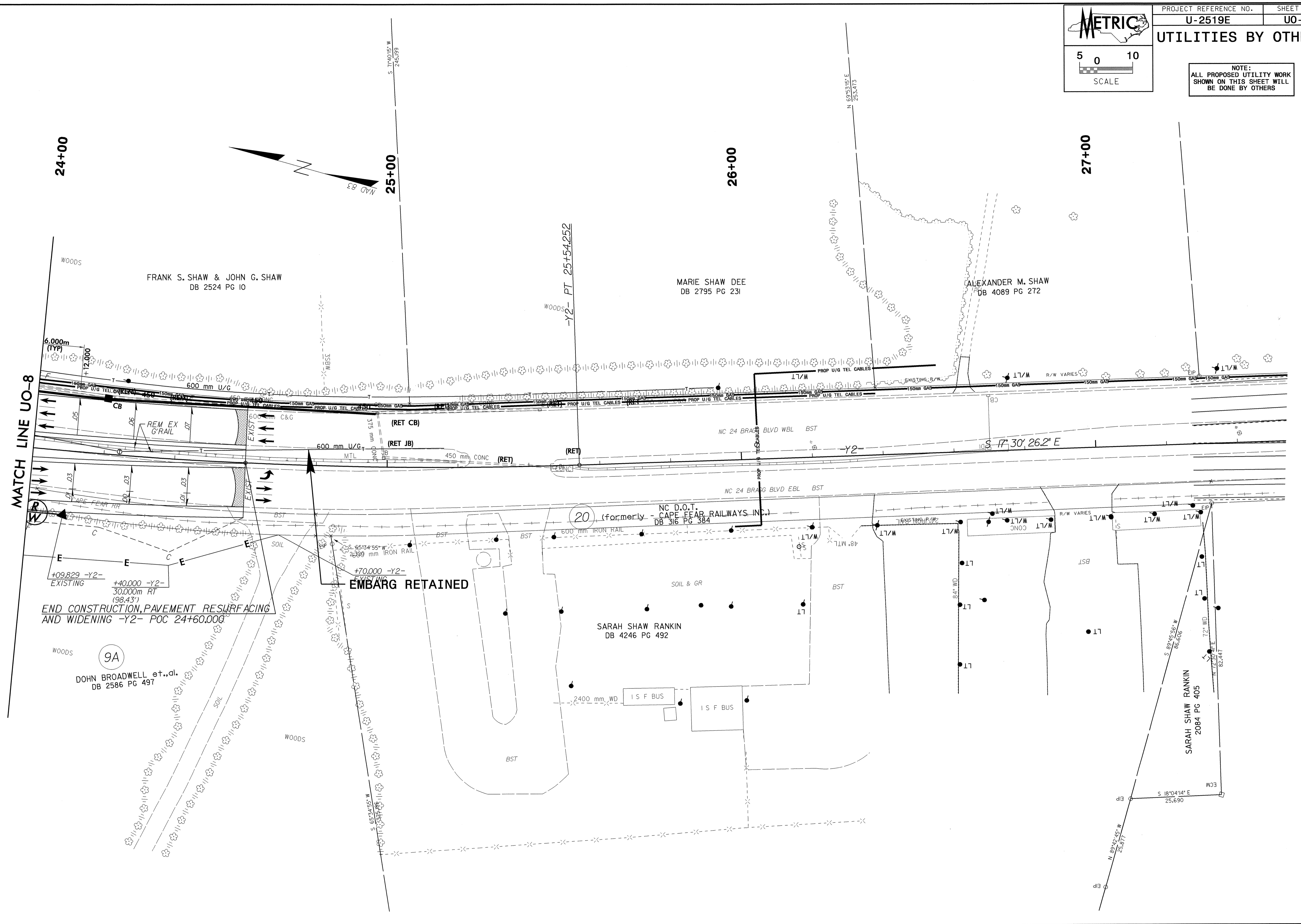


03-MAR-2009 14:27
 R:\projects\2519\grading and structures\2519e-ut_10_uob_psh.dgn
 5/17/09



UTILITIES BY OTHERS

NOTE:
ALL PROPOSED UTILITY WORK
SHOWN ON THIS SHEET WILL
BE DONE BY OTHERS

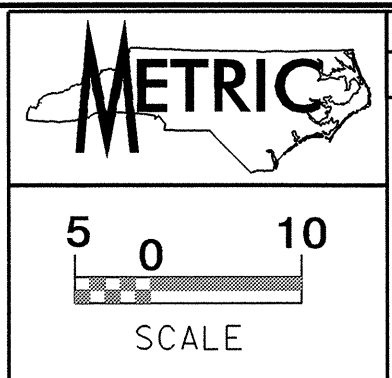


MATCH LINE UO-8

END CONSTRUCTION, PAVEMENT RESURFACING
AND WIDENING -Y2- POC 24+60.000

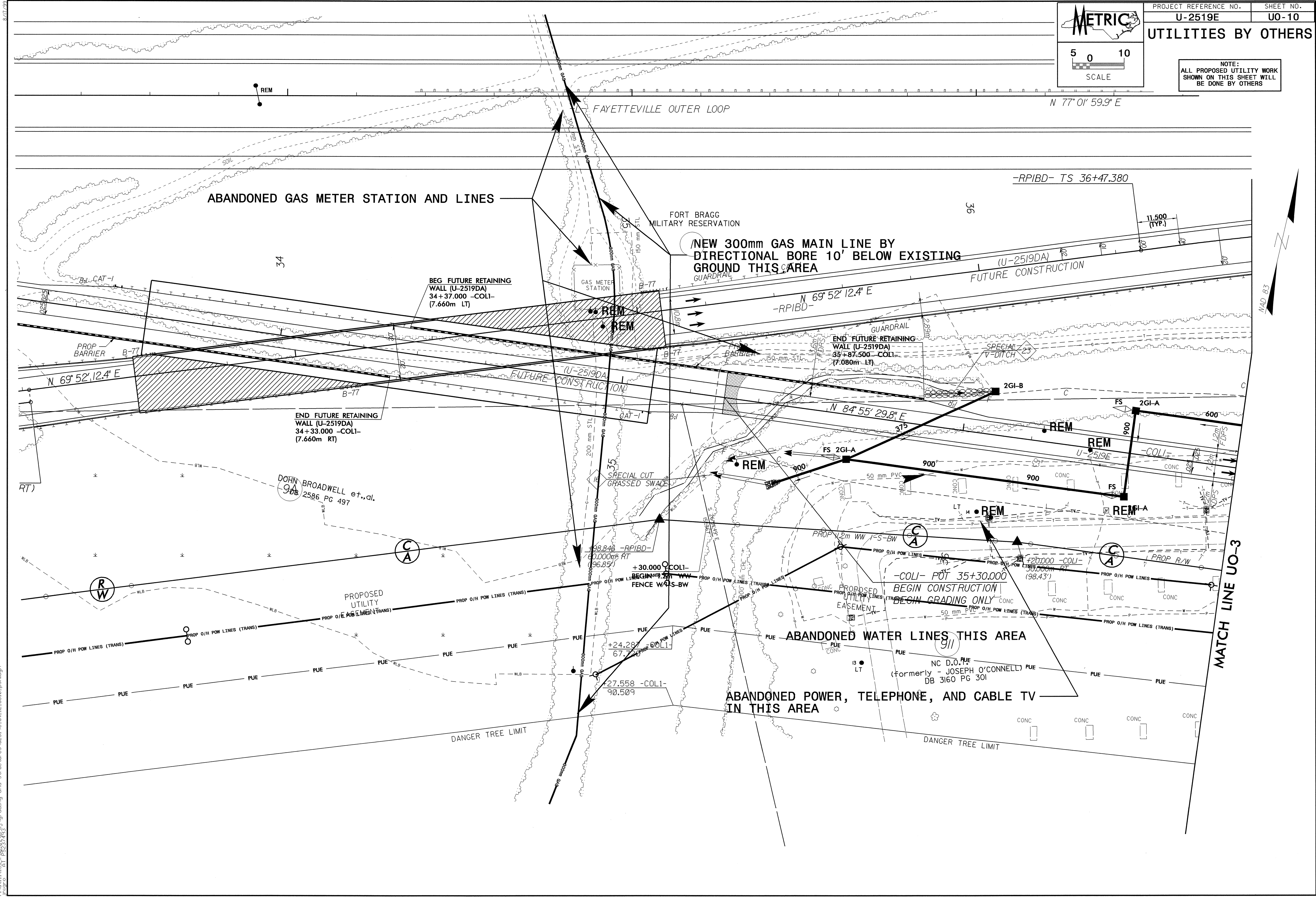
EMBARG RETAINED

03-MAR-2009 11:34
r:\ut11\trg\p\2519E\J\grading and structures\2519e_ut_11_u09_psh.dgn
8/7/99

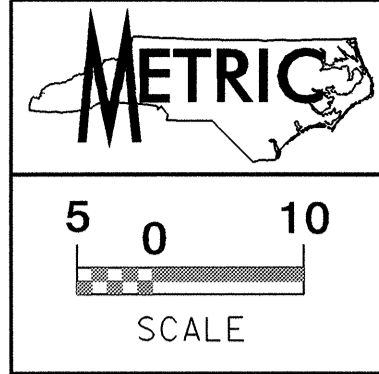


PROJECT REFERENCE NO.	SHEET NO.
U-2519E	UO-10
UTILITIES BY OTHERS	

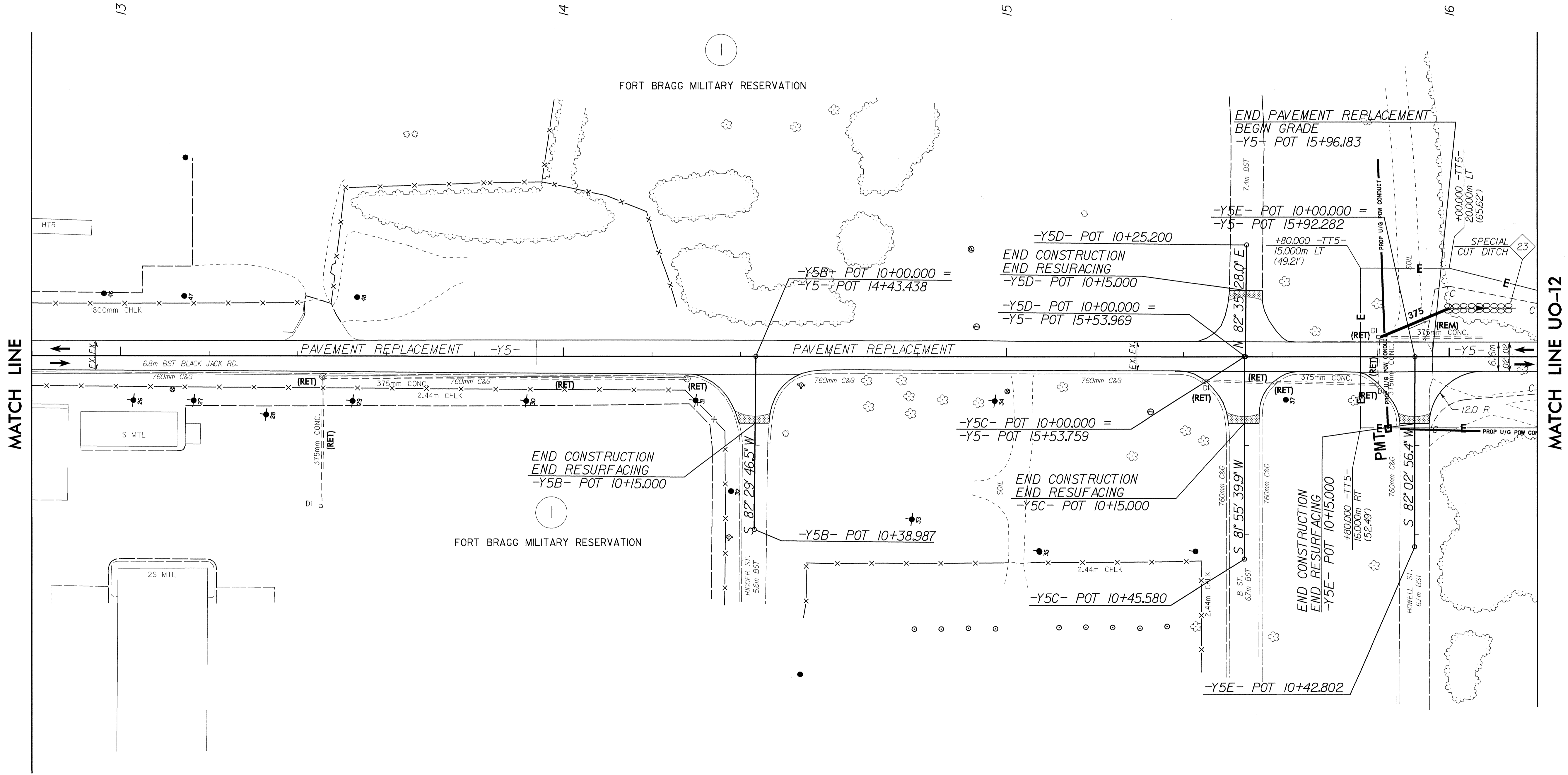
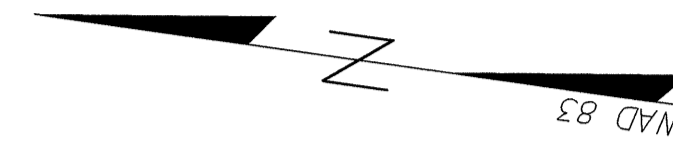
NOTE:
ALL PROPOSED UTILITY WORK
SHOWN ON THIS SHEET WILL
BE DONE BY OTHERS



03-MAR-2009 11:38
 r:\ut11\trg\p2519e\j\grading and structures\ut2519e_ut12_uo10_pah.dgn
 8/17/09



NOTE:
ALL PROPOSED UTILITY WORK
SHOWN ON THIS SHEET WILL
BE DONE BY OTHERS



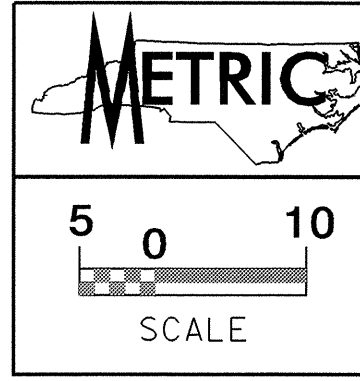
03-MAR-2009 11:41 r:\utilities\psh\j\grd\grd_structures\2519e_ut_11_u01_psh.dgn

01

01

MATCH LINE

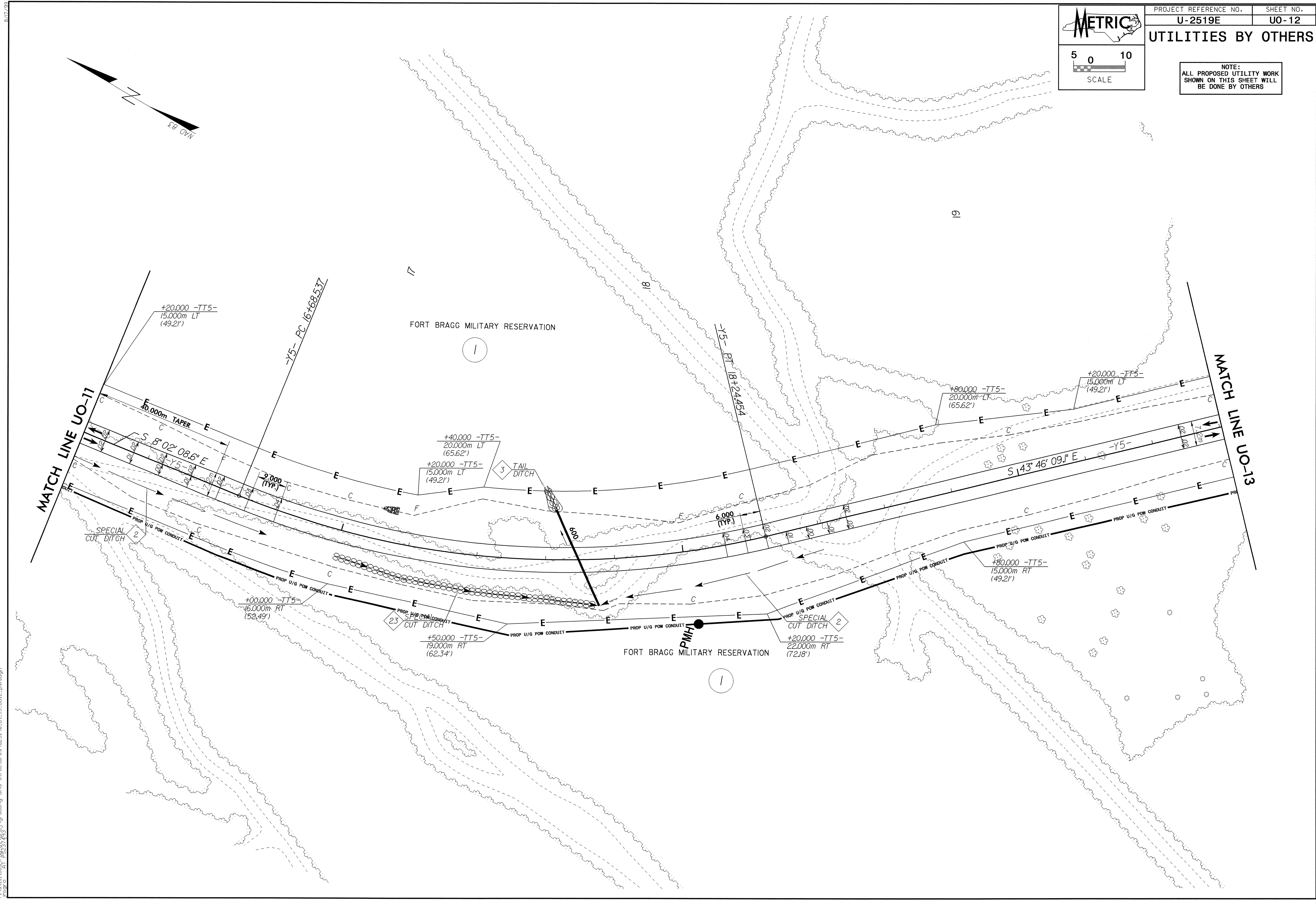
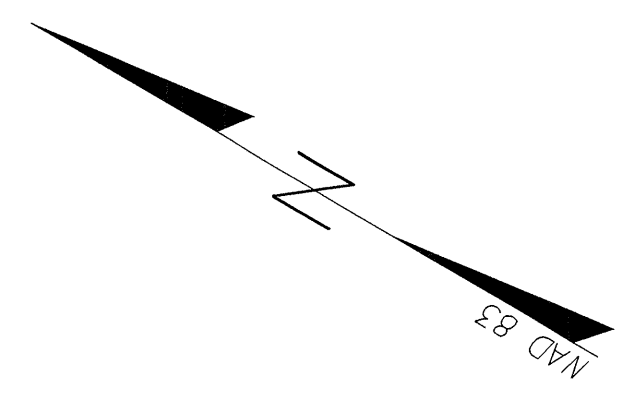
MATCH LINE UO-12



PROJECT REFERENCE NO.	SHEET NO.
U-2519E	U0-12

UTILITIES BY OTHERS

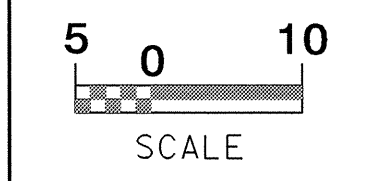
NOTE:
ALL PROPOSED UTILITY WORK
SHOWN ON THIS SHEET WILL
BE DONE BY OTHERS



03-MAR-2009 11:47
r:\util\stg\p2519e\p2519e.dwg
03-MAR-2009 11:47
r:\util\stg\p2519e\p2519e.dwg

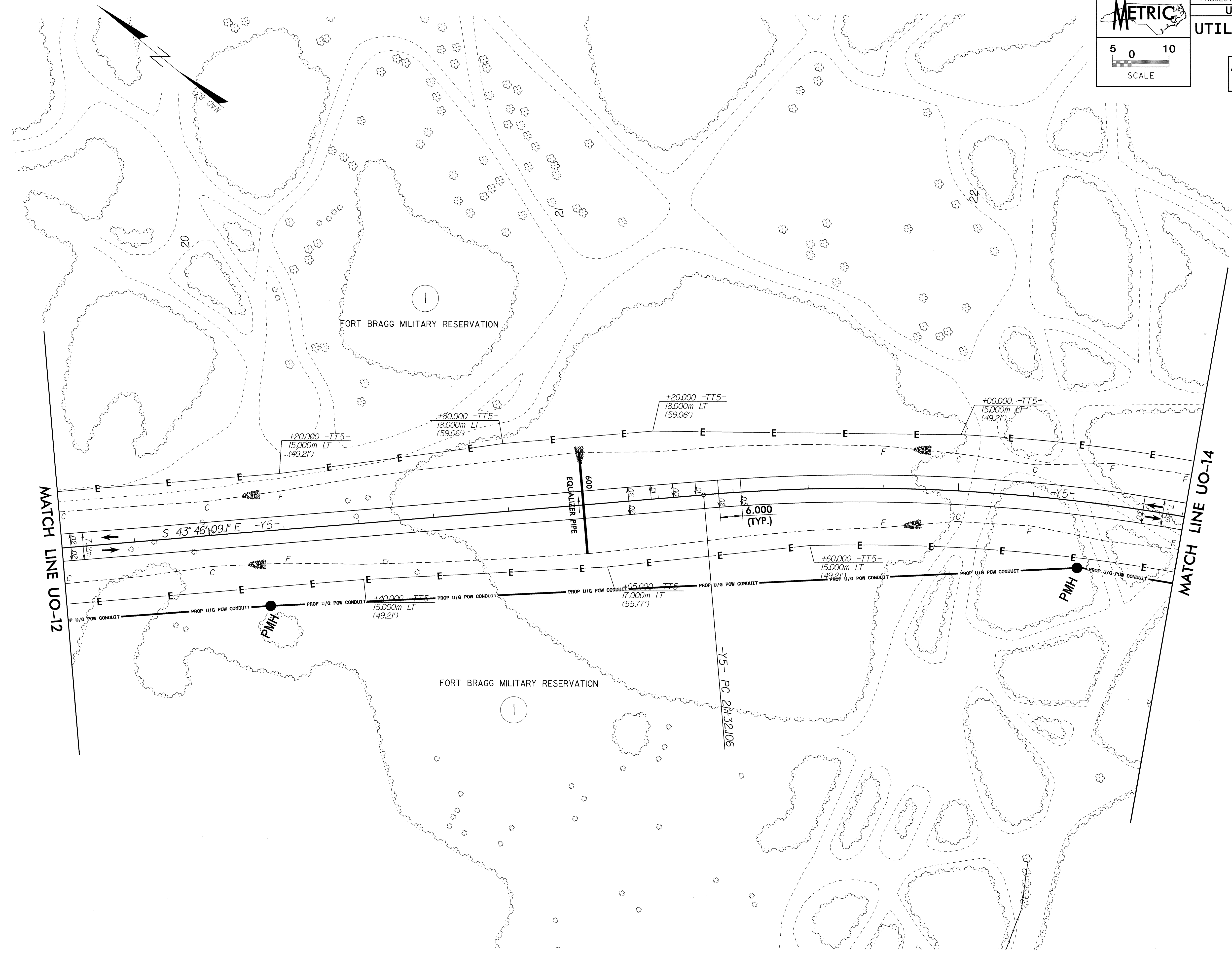


UTILITIES BY OTHERS

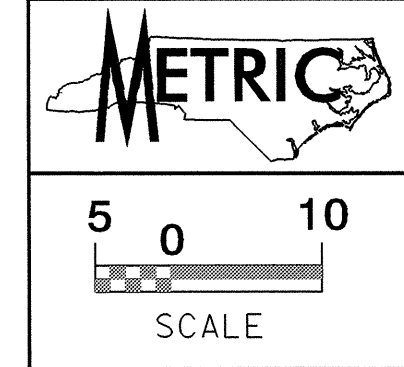


NOTE:
ALL PROPOSED UTILITY WORK
SHOWN ON THIS SHEET WILL
BE DONE BY OTHERS

03-MAR-2009 11:49
r:\utilities\p2519\grd\grading and structures\2519e_ut_16_uo13_pah.dgn



8/17/99



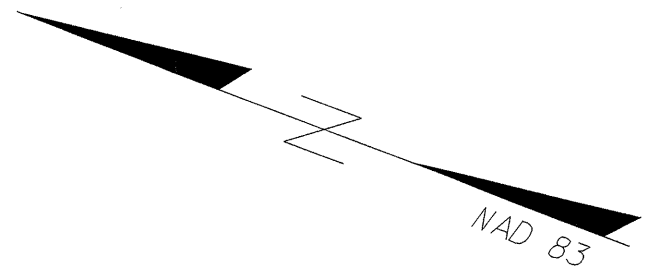
PROJECT REFERENCE NO. U-2519E
SHEET NO. UO-14

UTILITIES BY OTHERS

NOTE:
ALL PROPOSED UTILITY WORK
SHOWN ON THIS SHEET WILL
BE DONE BY OTHERS

03-MAR-2009 10:35
F:\Utilities\U-2519E\UO-14\grading and structures\U2519e-uc-17.uo14.psh.dgn

MATCH LINE UO-13



FORT BRAGG MILITARY RESERVATION

23

END CONSTRUCTION
-Y6- POC 10+62.000
+40.000 -TT5-
15,000m LT
(49.21')

6.000
(TYP.)

S 18° 41' 49.4" E

2GI-D

-Y5-

-Y5- POT Sta. 24+63.645 =
-Y6- POC Sta. 10+33.429

PROP U/G POW CONDUIT

+40.000 -TT5-
15,000m RT
(49.21')

BEGIN CONSTRUCTION
-Y6- POC 10+15.000

FORT BRAGG MILITARY RESERVATION

01

-Y6- PC 10+00.000

-Y5- PT 23+50.902

-Y6- PT 11+03.381

-Y6-

PAVEMENT REPLACEMENT ONLY

2GI-D

-Y5-

PROP U/G POW CONDUIT

(RET)

(RET)

(RET)

(RET)

(RET)

PMT

PROP U/G POW CONDUIT

PROP U/G POW CONDUIT

ANIX ST.

303

60mm CS&G

60mm CS&G

20C

300mm CONC.

30m SOIL

SOIL & GRAVEL CONC.

1200mm CONC.

1200mm CONC.

CONC.

(RET)

(RET)

315mm CONC.

(RET)

(RET)

(RET)

(RET)

(RET)

(RET)

(RET)

(RET)

(RET)

(RET)

(RET)

(RET)

(RET)