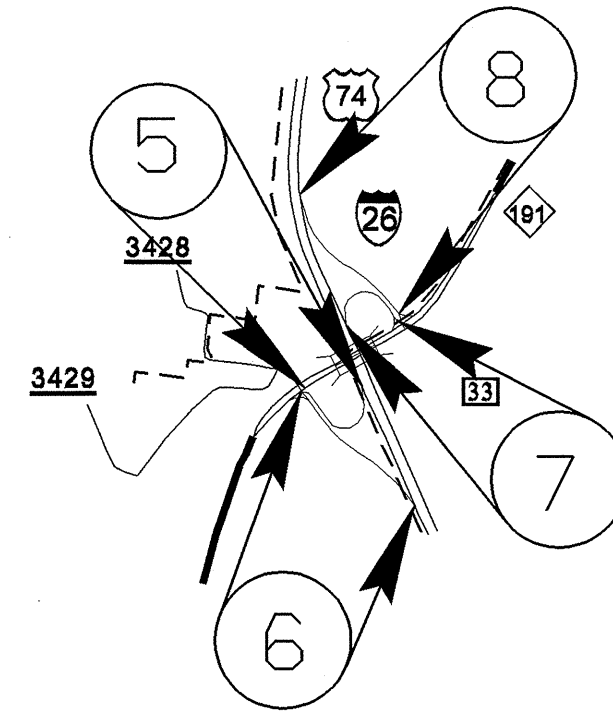
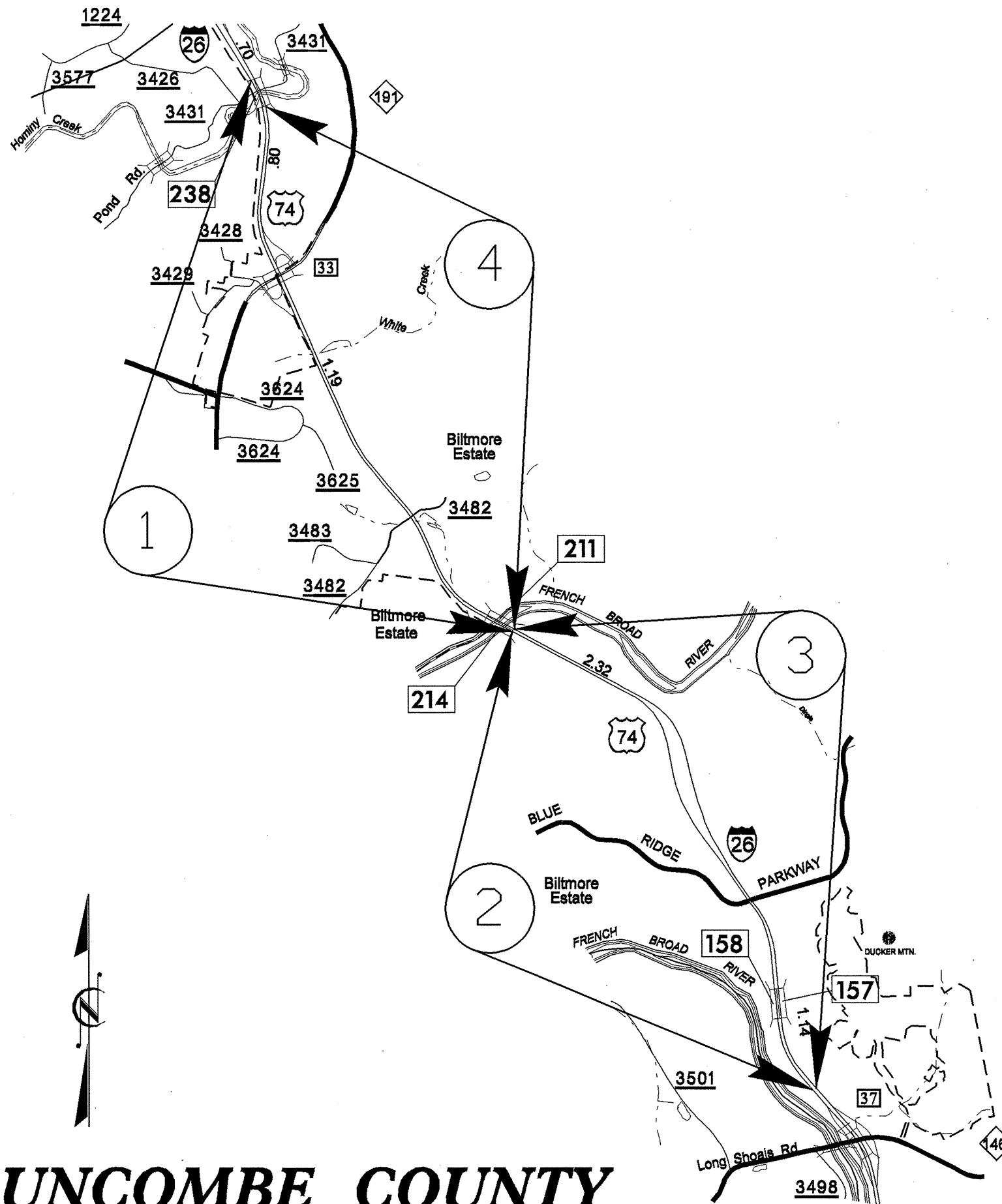


PROJECT NO.	SHEET NO.	TOTAL SHEETS
I-5122	1	9



EFF. 07-18-06

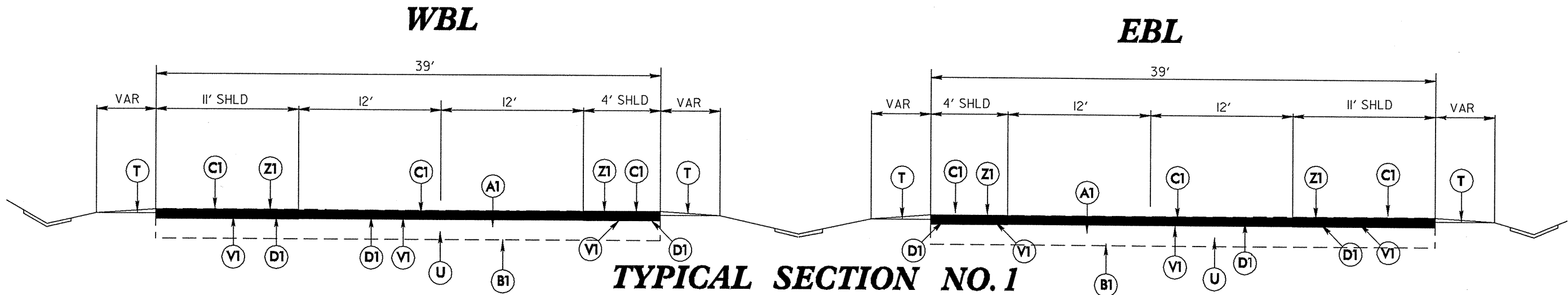
REV. 01-02-07  
2006 ROADWAY ENGLISH STANDARD DRAWINGS

The following Roadway Standards as appear in "Roadway Standard Drawings" Highway Design Branch - N. C. Department of Transportation - Raleigh, N. C., Dated July 18, 2006 are applicable to this project and by reference hereby are considered a part of these plans:

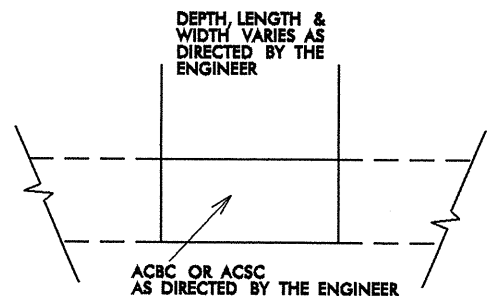
STD.NO.	TITLE
DIVISION 3 - PIPE CULVERTS	
300.02	Method of Pipe Installation - Method 'B'
DIVISION 6 - ASPHALT BASES AND PAVEMENTS	
665.01	Milled Rumble Strips - Asphalt Pavements
DIVISION 8 - INCIDENTALS	
840.00	Concrete Base Pad for Drainage Structures
840.01	Brick Catch Basin - 12" thru 54" Pipe
840.02	Concrete Catch Basin - 12" thru 54" Pipe
840.03	Frame, Grates and Hood - for Use on Standard Catch Basin
840.45	Precast Drainage Structure

**BUNCOMBE COUNTY**

<b>PROJECT NO.</b>	<b>SHEET NO.</b>	<b>TOTAL SHEETS</b>
I-5122	2	9



**CONSTRUCTION SEQUENCE  
(TYPICAL SECTION NO. 1)**

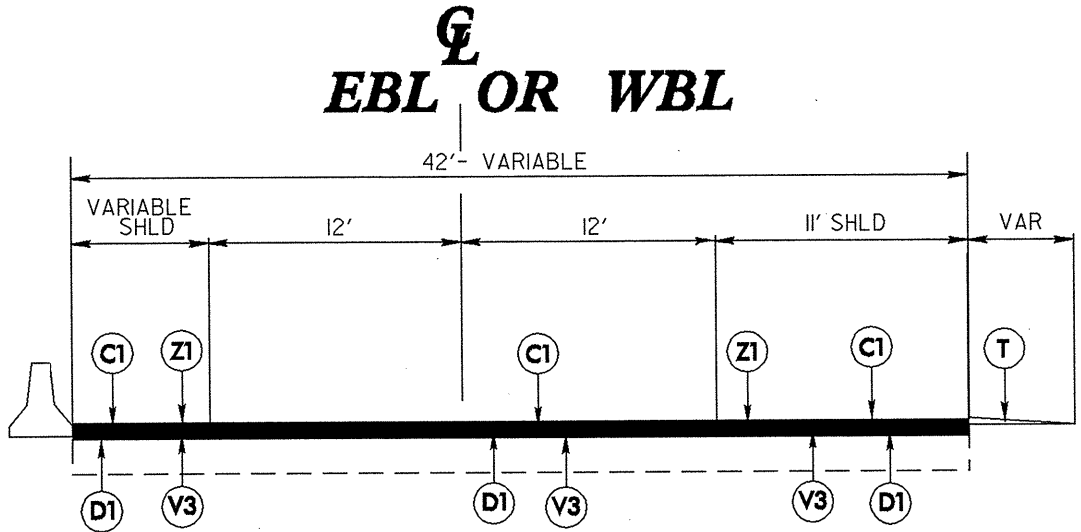
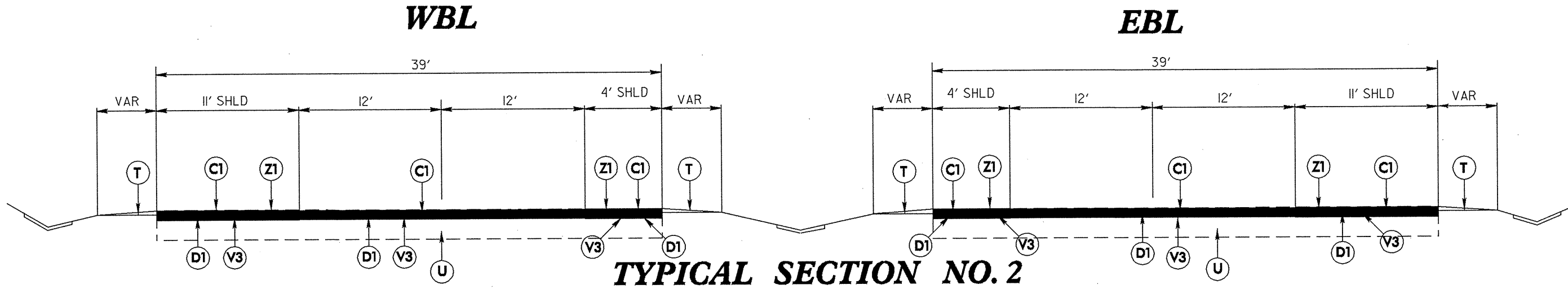


**PATCHING DETAIL**  
PATCH EXISTING ASPHALT PAVEMENT

1. MILL ENTIRE SURFACE DOWN TO EXISTING CONCRETE PAVEMENT
2. ENGINEER MARKS SLABS TO BE REPAIRED
3. REPAIR JOINTED CONCRETE PAVEMENT SLABS OR PATCH CONCRETE PAVEMENT SPALLS AS DIRECTED BY THE ENGINEER
4. RESURFACE IN ACCORDANCE WITH TYPICAL SECTION NO. 1

PAVEMENT SCHEDULE	
A1	REPAIR OF JOINTED CONCRETE PAVEMENT SLABS OR PATCHING CONCRETE PAVEMENT SPALLS, LOCATION AND WORK TYPE AS DIRECTED BY ENGINEER
B1	UNDERCUT EXCAVATION, CLASS IV SUBGRADE STABILIZATION AND FABRIC FOR SOIL STABILIZATION, LOCATION AS DIRECTED BY THE ENGINEER
C1	PROP. APPROX. 1 1/2" ASPHALT CONCRETE SURFACE COURSE, TYPE S9.5D, AT AN AVERAGE RATE OF 168 LBS. PER SQ. YD.
D1	PROP. APPROX. 2 1/2" ASPHALT CONCRETE INTERMEDIATE COURSE, TYPE I19.0D, AT AN AVERAGE RATE OF 285 LBS. PER SQ. YD.
T	SHOULDER RECONSTRUCTION USING EARTH MATERIAL, LOCATIONS AS DIRECTED BY ENGINEER
U	EXISTING PAVEMENT
V1	MILL 2 1/2" ON SHOULDERS AND MILL TO CONCRETE PAVEMENT OVER ROADWAY +/- 2 1/2"
Z1	MILLED RUMBLE STRIPS IN ACCORDANCE WITH STD. DWG. 665.01

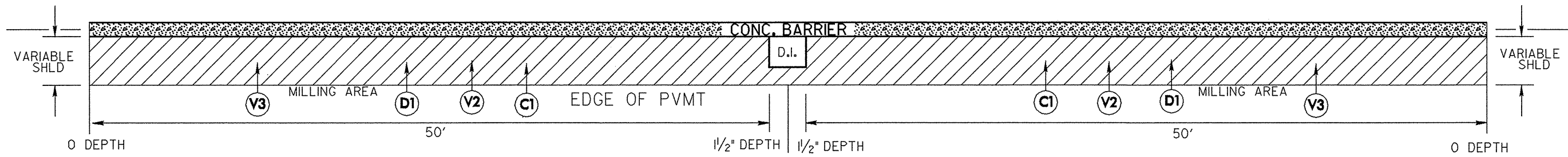
<b>PROJECT NO.</b>	<b>SHEET NO.</b>	<b>TOTAL SHEETS</b>
I-5122	3	9



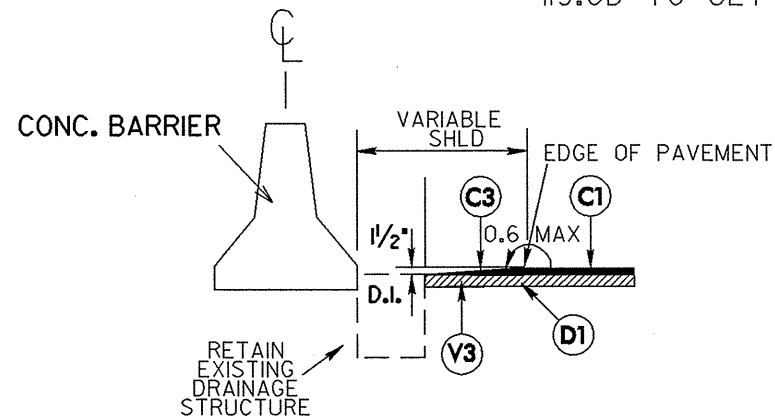
PAVEMENT SCHEDULE	
C1	PROP. APPROX. 1½" ASPHALT CONCRETE SURFACE COURSE, TYPE S9.5D, AT AN AVERAGE RATE OF 168 LBS. PER SQ. YD.
D1	PROP. APPROX. 2½" ASPHALT CONCRETE INTERMEDIATE COURSE, TYPE I19.0D, AT AN AVERAGE RATE OF 285 LBS. PER SQ. YD.
T	SHOULDER RECONSTRUCTION USING EARTH MATERIAL, LOCATIONS AS DIRECTED BY ENGINEER
U	EXISTING PAVEMENT
V3	MILL 2½", OVER ENTIRE ROADWAY AND SHOULDERS
Z1	MILLED RUMBLE STRIPS IN ACCORDANCE WITH STD. DWG. 685.01

**BUNCOMBE COUNTY**

<b>PROJECT NO.</b>	<b>SHEET NO.</b>	<b>TOTAL SHEETS</b>
I-5122	4	9



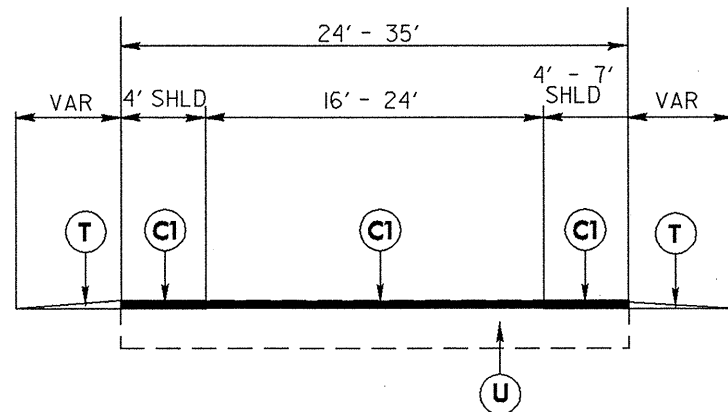
V2 MILLING AT STRUCTURES WILL BE MILLED INTO NEW I19.0D TO GET 0-1 1/2" TAPER OVER 50' LENGTH AT STRUCTURE



**MILLING DETAILS FOR EXISTING DRAINAGE STRUCTURES. FOR TYPICAL NUMBER 3**

PAVEMENT SCHEDULE	
C1	PROP. APPROX. 1 1/2" ASPHALT CONCRETE SURFACE COURSE, TYPE S9.5D, AT AN AVERAGE RATE OF 168 LBS. PER SQ. YD.
C3	PROP. VAR. DEPTH ASPHALT CONCRETE SURFACE COURSE, TYPE S9.5D, AT AN AVERAGE RATE OF 112 LBS. PER SQ. YD. PER 1" DEPTH. TO BE PLACED IN LAYERS NOT TO EXCEED 2" IN DEPTH.
D1	PROP. APPROX. 2 1/2" ASPHALT CONCRETE INTERMEDIATE COURSE, TYPE I19.0D, AT AN AVERAGE RATE OF 286 LBS. PER SQ. YD.
T	SHOULDER RECONSTRUCTION USING EARTH MATERIAL, LOCATIONS AS DIRECTED BY ENGINEER
U	EXISTING PAVEMENT
V2	MILL 0- 1 1/2" OVER 10' AT CONCRETE ISLANDS ON RAMPS, ON TYPICAL NUMBER 8 MILL 0- 1 1/2" OVER 8' AND 10' AND FOR MILLING DETAIL FOR STRUCTURES MILL 0- 1 1/2" OVER 50' SEE TYPICALS AND DETAIL
V3	MILL 2 1/2", OVER ENTIRE ROADWAY AND SHOULDERS

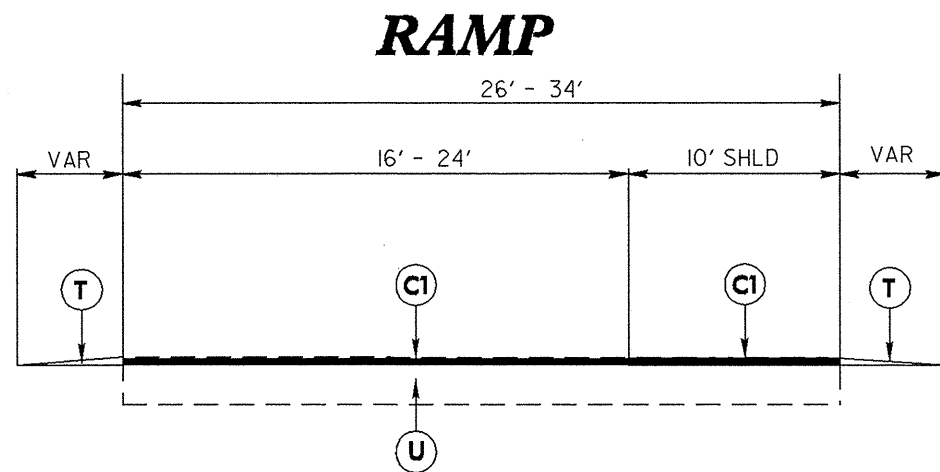
**RAMP**



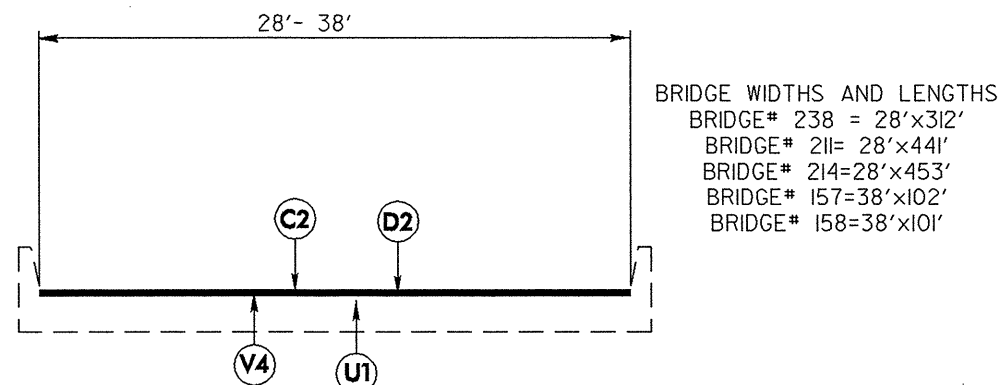
**TYPICAL SECTION NO. 4**

**BUNCOMBE COUNTY**

<b>PROJECT NO.</b>	<b>SHEET NO.</b>	<b>TOTAL SHEETS</b>
<b>I-5122</b>	<b>5</b>	<b>9</b>



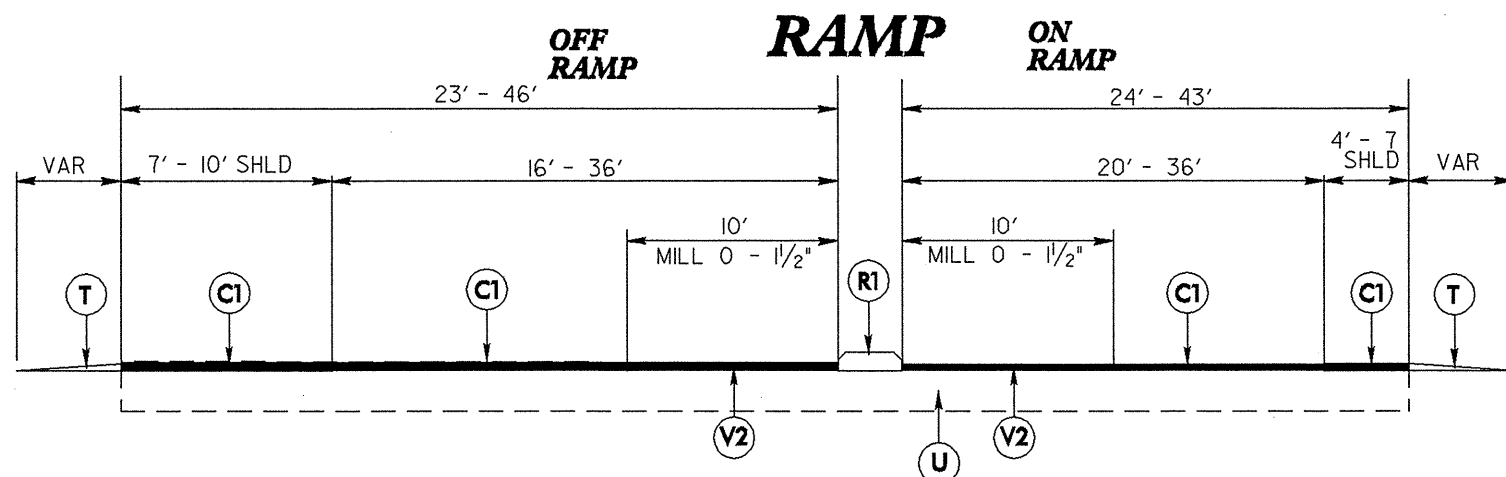
**TYPICAL SECTION NO. 5**



**BRIDGE DETAIL**

**BRIDGE NUMBERS 238, 211, 214, 157 AND 158  
 MILL PAVEMENT PATCH BRIDGE DECK AS NEEDED,  
 DO JOINT REPAIR AND RESURFACE BRIDGE DECK BACK UP TO  
 ELEVATION OF EXISTING ROAD.  
 SEE MAPS FOR LOCATION ON 238, 211, 214, 157 AND 158**

PAVEMENT SCHEDULE	
<b>C1</b>	PROP. APPROX. 1½" ASPHALT CONCRETE SURFACE COURSE, TYPE S9.5D, AT AN AVERAGE RATE OF 168 LBS. PER SQ. YD.
<b>C2</b>	PROP. VAR. DEPTH ASPHALT CONCRETE SURFACE COURSE, TYPE S9.5D, AT AN AVERAGE RATE OF 112 LBS. PER SQ. YD. PER 1" DEPTH. TO BE PLACED IN LAYERS NOT TO EXCEED 2" IN DEPTH. (AS DIRECTED BY THE ENGINEER)
<b>D2</b>	PROP. VAR. DEPTH ASPHALT CONCRETE INTERMEDIATE COURSE, TYPE I19.0D AT AN AVERAGE RATE OF 114 LBS. PER SQ. YD. PER 1" DEPTH, TO BE PLACED IN LAYERS NOT LESS THAN 2½" IN DEPTH OR GREATER THAN 4" IN DEPTH. (AS DIRECTED BY THE ENGINEER)
<b>R1</b>	EXISTING CONCRETE ISLAND
<b>T</b>	SHOULDER RECONSTRUCTION USING EARTH MATERIAL, LOCATIONS AS DIRECTED BY ENGINEER
<b>U</b>	EXISTING PAVEMENT
<b>U1</b>	EXISTING CONCRETE BRIDGE DECK
<b>V2</b>	MILL 0- 1½" OVER 10' AT CONCRETE ISLANDS ON RAMPS, ON TYPICAL NUMBER 8 MILL 0- 1½" OVER 8' AND 10' AND FOR MILLING DETAIL FOR STRUCTURES MILL 0- 1½" OVER 50' SEE TYPICALS AND DETAIL
<b>V4</b>	VARIABLE DEPTH MILLING ON BRIDGES (0" TO 5"), MILL DOWN TO CONCRETE DECK OF BRIDGE AS DIRECTED BY THE ENGINEER.

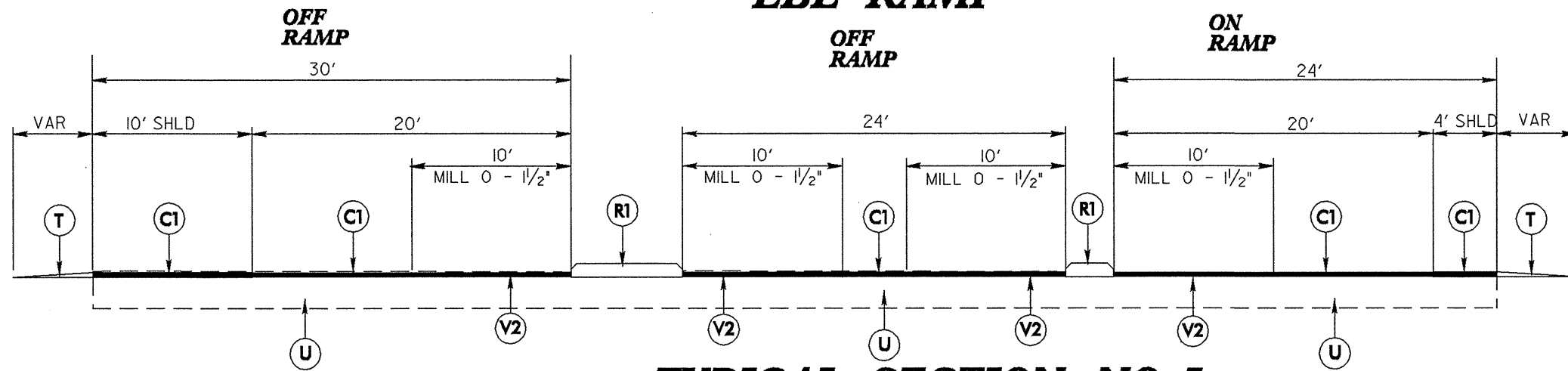


**TYPICAL SECTION NO. 6**

**BUNCOMBE  
 COUNTY**

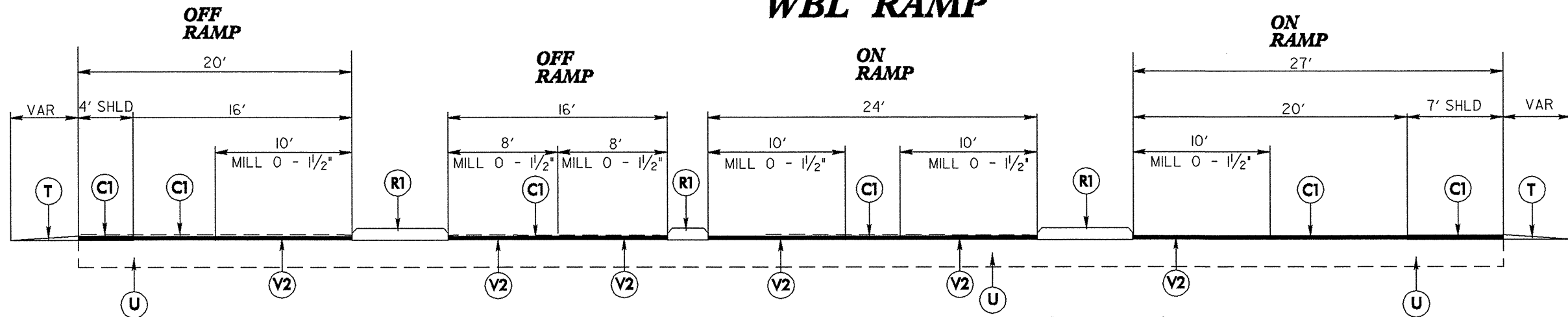
PROJECT NO.	SHEET NO.	TOTAL SHEETS
I-5122	6	9

### EBL RAMP



**TYPICAL SECTION NO. 7**

### WBL RAMP



**TYPICAL SECTION NO. 8**

NOTE: SEE SHEET 5 OF 7 FOR PAVEMENT SCHEDULE

**BUNCOMBE COUNTY**

20-APR-2009 13:37 c:\projects\special details\stds\06\stds to special details\70001\0700d01.dgn  
 \$\$\$\$\$\$USERNAME\$\$\$\$\$\$

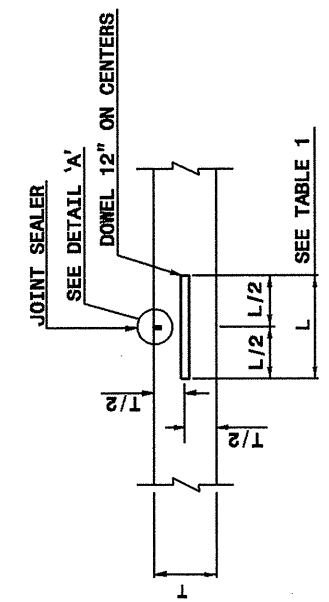
STATE OF NORTH CAROLINA DEPT. OF TRANSPORTATION DIVISION OF HIGHWAYS RALEIGH, N.C.

ENGLISH DETAIL DRAWING FOR CONSTRUCTION AND CONTRACTION JOINTS

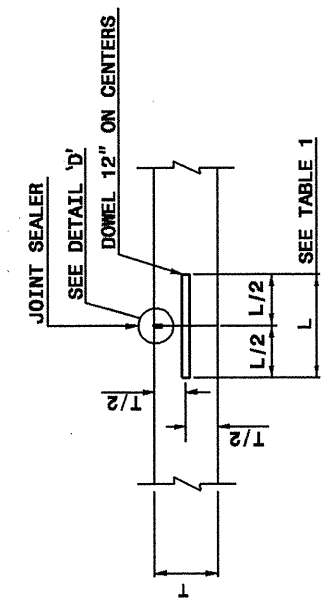
SHEET 1 OF 2  
**700D01**

**GENERAL NOTES:**

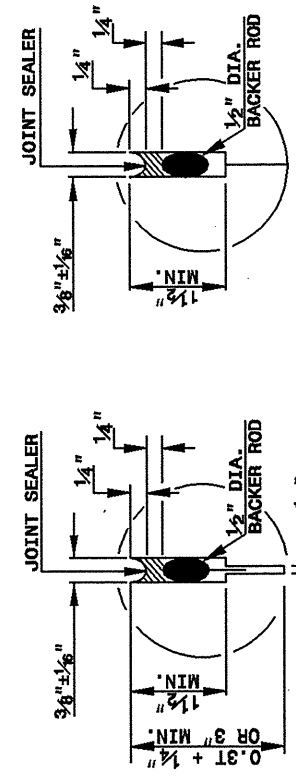
- FORM TRANSVERSE CONTRACTION JOINTS BY SAWING WITH APPROVED EQUIPMENT.
- SPACE TRANSVERSE CONTRACTION JOINTS AT INTERVALS OF 15'.
- USE A DOWEL ASSEMBLY OR OTHER APPROVED DOWEL INSERTION TECHNIQUE IN ALL TRANSVERSE CONTRACTION JOINTS.
- DOWEL ASSEMBLIES ARE COVERED IN DETAIL 700D03.
- PROVIDE SMOOTH DOWEL BARS. PROVIDE DEFORMED TIE BARS.
- WHEN UTILIZING AN EARLY ENTRY SAW, CUT THE JOINT TO A MINIMUM DEPTH OF 3".



**TRANSVERSE CONTRACTION JOINT**



**PLANNED TRANSVERSE CONSTRUCTION JOINT**



**DETAIL 'A'**

TABLE I - DOWEL BARS

SLAB THICKNESS	DOWEL BAR "D"	DOWEL BAR LENGTH "L"
8" OR LESS	1"	14"
8 1/2" TO 9 1/2"	1 1/8"	16"
10" TO 10 1/2"	1 1/4"	18"
11" AND ABOVE	1 1/2"	18"

**DETAIL 'D'**

STATE OF NORTH CAROLINA DEPT. OF TRANSPORTATION DIVISION OF HIGHWAYS RALEIGH, N.C.

ENGLISH DETAIL DRAWING FOR CONSTRUCTION AND CONTRACTION JOINTS

SHEET 1 OF 2  
**700D01**

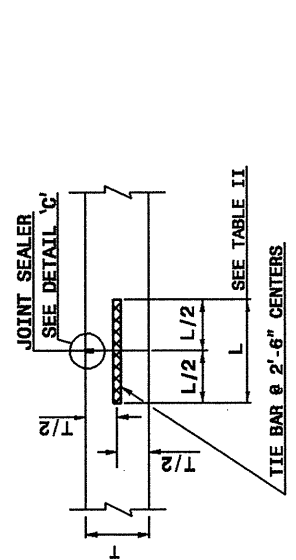
STATE OF NORTH CAROLINA DEPT. OF TRANSPORTATION DIVISION OF HIGHWAYS RALEIGH, N.C.

ENGLISH DETAIL DRAWING FOR CONSTRUCTION AND CONTRACTION JOINTS

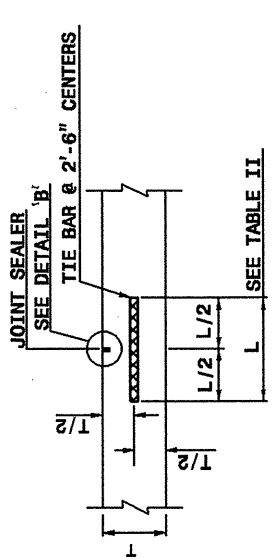
SHEET 2 OF 2  
**700D01**

**GENERAL NOTES:**

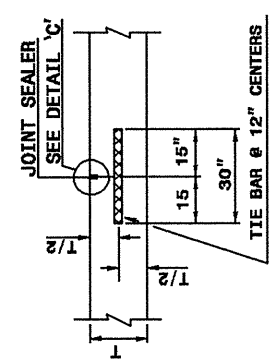
- CONSTRUCT TRANSVERSE CONTRACTION JOINTS AT THE END OF EACH DAY'S OPERATION (PLANNED JOINT) OR WHEN THE PLACING OF CONCRETE IS SUSPENDED FOR MORE THAN 30 MINUTES (EMERGENCY JOINT).
- USE AN APPROVED HEADER AT EMERGENCY JOINTS STD. DMG. 700.04 AND DESIGNED TO PERMIT THE PLACEMENT OF AND CORRECTLY HOLD IN PLACE TIE BARS.
- USE TIE BARS OF THE SAME DIAMETER AS DOWEL BARS FOR EMERGENCY TRANSVERSE CONTRACTION JOINTS.
- LOCATE PLANNED TRANSVERSE CONTRACTION JOINTS AT THE SPACING REQUIRED FOR CONTRACTION JOINTS. USE AN APPROVED METHOD OF INSTALLING DOWELS IN ALL PLANNED TRANSVERSE CONTRACTION JOINTS.
- DO NOT LOCATE EMERGENCY TRANSVERSE CONTRACTION JOINTS LESS THAN 6' FROM ANY CONTRACTION JOINT OR PLANNED CONTRACTION JOINT.
- DO NOT PLACE TIE BARS IN LONGITUDINAL JOINTS WITHIN 1'-4" OF A TRANSVERSE JOINT.
- WHEN UTILIZING AN EARLY ENTRY SAW, CUT THE JOINT TO A MINIMUM DEPTH OF 3".



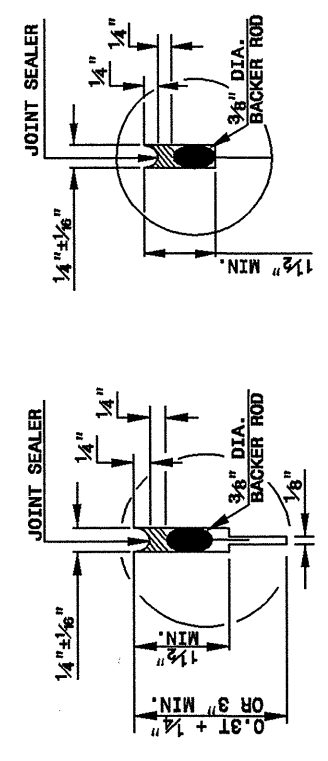
**LONGITUDINAL CONSTRUCTION JOINT**



**LONGITUDINAL JOINT**



**EMERGENCY TRANSVERSE CONSTRUCTION JOINT**



**DETAIL 'B'**

TABLE II - LONGITUDINAL TIE BARS

SLAB THICKNESS	TIE BAR DIA. "D"	TIE BAR LENGTH "L"
8 1/2" OR LESS	1/2"	30"
9" OR ABOVE	5/8"	30"

**DETAIL 'C'**

STATE OF NORTH CAROLINA DEPT. OF TRANSPORTATION DIVISION OF HIGHWAYS RALEIGH, N.C.

ENGLISH DETAIL DRAWING FOR CONSTRUCTION AND CONTRACTION JOINTS

SHEET 2 OF 2  
**700D01**



PROJECT SERVICES UNIT  
STANDARDS AND SPECIAL DESIGN  
Office 919-250-4128 FAX 919-250-4119

**SEE PLATE FOR TITLE**

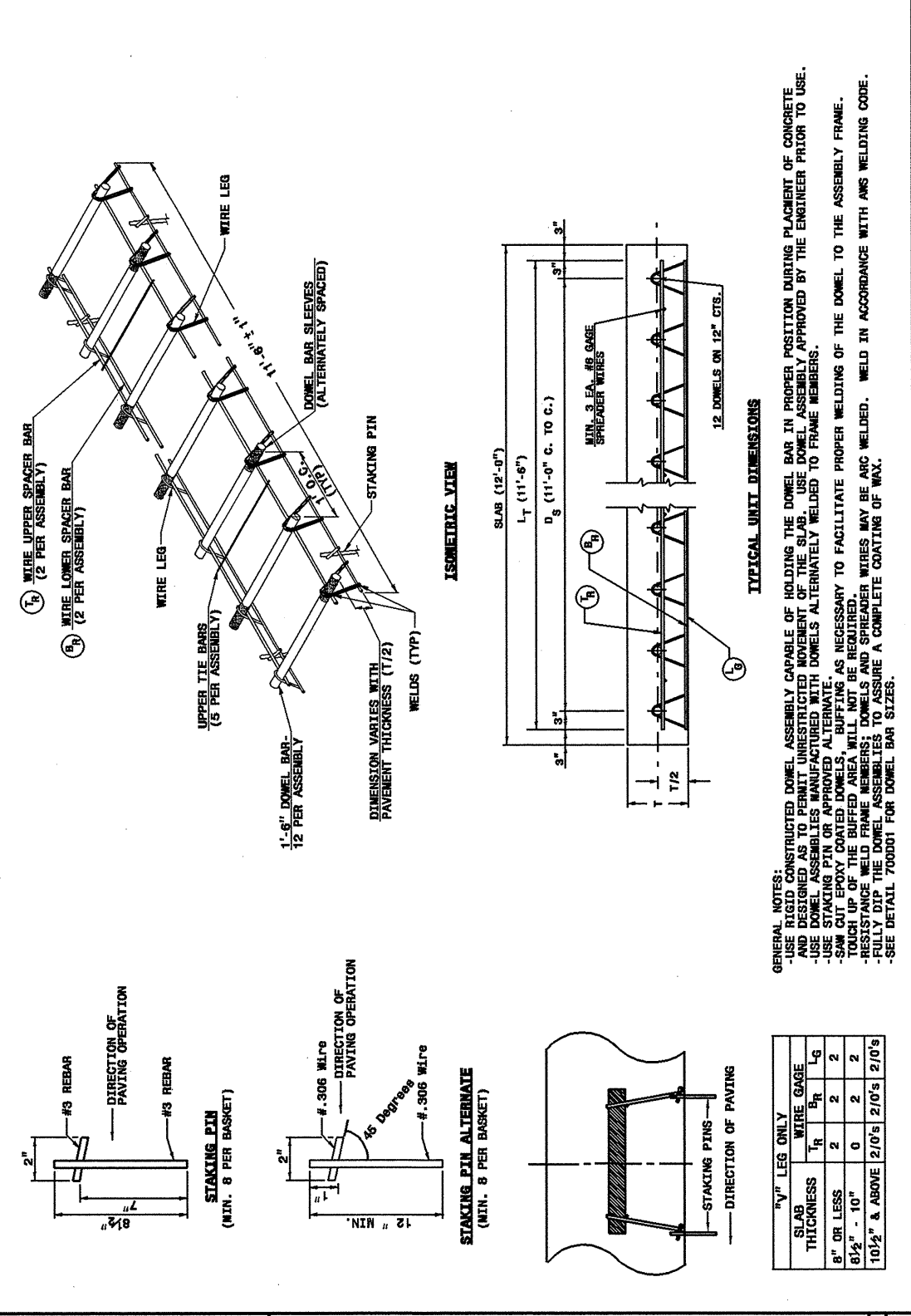
ORIGINAL BY: 2002 STANDARDS DATE: 01-15-02  
 MODIFIED BY: E.E. WARD DATE: 09-26-08  
 CHECKED BY: DATE:  
 FILE SPEC.: stds\08stdstocetalls/english\700d01.dgn

20-APR-2009 13:36 s:\contracts\special details\vertical\stds\06\stds to special details\700003\07000003.dgn \$\$\$USER\$\$\$

STATE OF NORTH CAROLINA DEPT. OF TRANSPORTATION DIVISION OF HIGHWAYS RALEIGH, N.C.

ENGLISH DETAIL DRAWING FOR DOWEL ASSEMBLY

SHEET 1 OF 2 700003



STATE OF NORTH CAROLINA DEPT. OF TRANSPORTATION DIVISION OF HIGHWAYS RALEIGH, N.C.

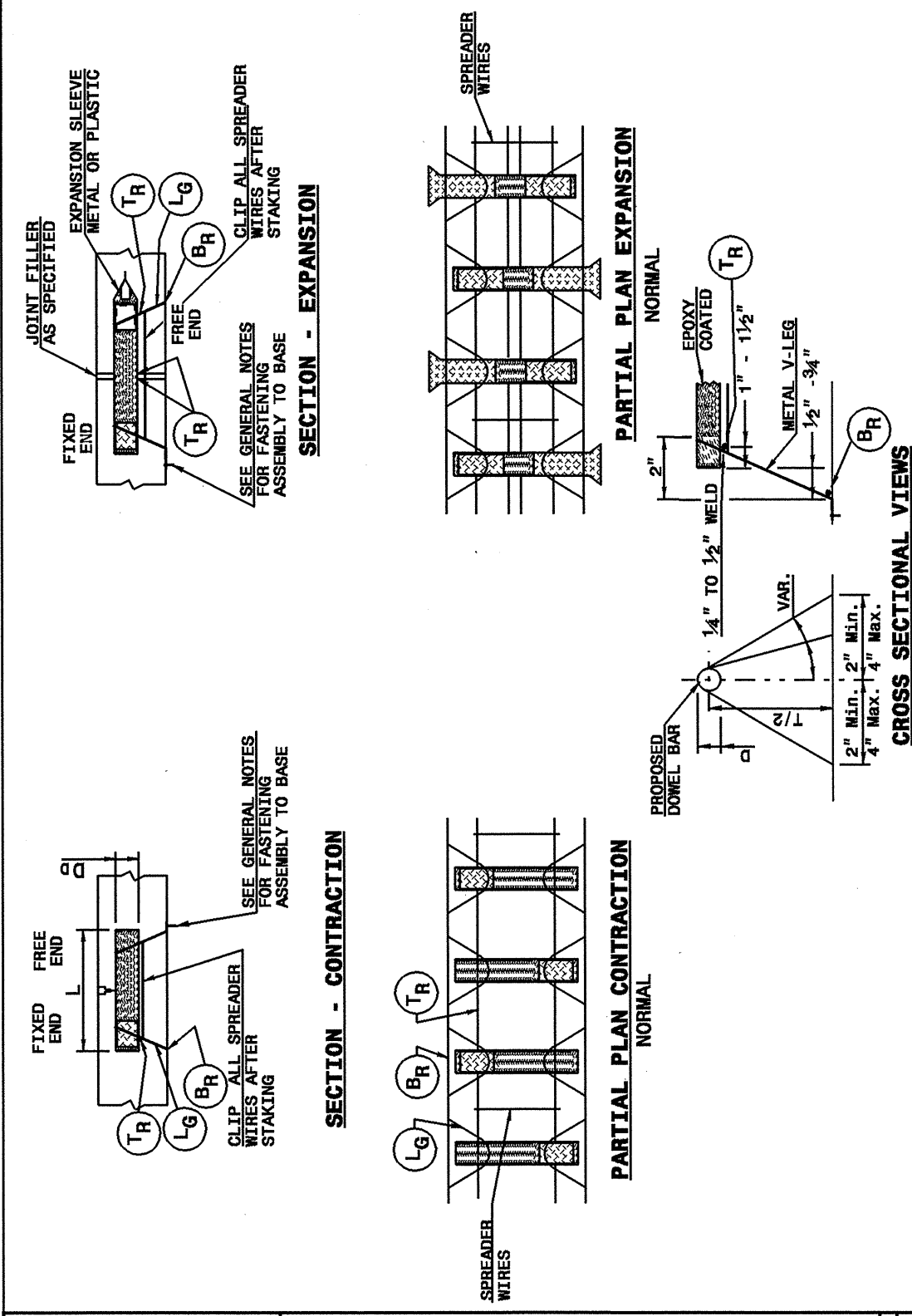
ENGLISH DETAIL DRAWING FOR DOWEL ASSEMBLY

SHEET 1 OF 2 700003

STATE OF NORTH CAROLINA DEPT. OF TRANSPORTATION DIVISION OF HIGHWAYS RALEIGH, N.C.

ENGLISH DETAIL DRAWING FOR DOWEL ASSEMBLY

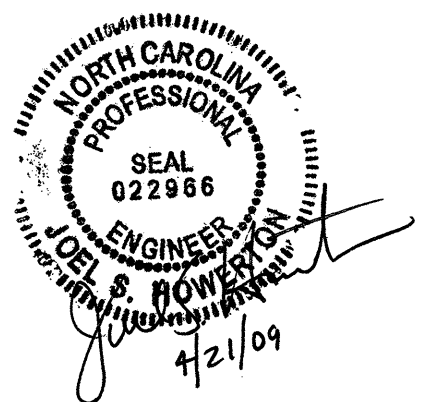
SHEET 2 OF 2 700003



STATE OF NORTH CAROLINA DEPT. OF TRANSPORTATION DIVISION OF HIGHWAYS RALEIGH, N.C.

ENGLISH DETAIL DRAWING FOR DOWEL ASSEMBLY

SHEET 2 OF 2 700003



PROJECT SERVICES UNIT  
 STANDARDS AND SPECIAL DESIGN  
 Office 919-250-4128 FAX 919-250-4119

**SEE PLATE FOR TITLE**

ORIGINAL BY: 2002 STANDARDS DATE: 01-15-02  
 MODIFIED BY: E.E. WARD DATE: 12-15-05  
 CHECKED BY: DATE:  
 FILE SPEC.: stds/02stdstocetalls/english/700001.dgn





PROJECT NO.	SHEET NO.	TOTAL NO.
I-5122	9	9

### SUMMARY OF QUANTITIES

PROJECT NO	COUNTY	MAP NO	ROUTE	DESCRIPTION	TYP	LENGTH MI	WIDTH FT	UNDERCUT EXCAVATION CY	CLASS IV SUBGRADE STABILIZATION TONS	FABRIC FOR SOIL STABILIZATION SY	18" BIT COATED CS PIPE CULVERTS, TYPE B, 0.064" THICK LF	18" BIT COATED CS PIPE ELBOWS, TYPE B, 0.064" THICK EA	SHOULDER RECONSTRUCT. SMI	2 1/2" MILLING SY	0" TO 1 1/2" MILLING SY	INTERMEDIATE COURSE, 119.0D TONS	SURFACE COURSE, S9.5D TON	PG 76-22 PLANT MIX TONS	PG 76-22 PLANT MIX TONS	PATCHING EXISTING PAVEMENT TONS	PATCHING CONCRETE PAVEMENT SPALLS SF	MILLED RUMBLE STRIPS LF	REPAIR OF JOINTED CONCRETE PAVEMENT SLABS SY	FRAME WITH GRATE & HOOD, STD 840.03, TYPE "G" EA	MASONRY DRAINAGE STRUCTURE EA	PORTABLE LIGHTING LS	SEED & MULCHING AC
45060.3.ST1	Buncombe	1	I-26 EASTBOUND	FROM NORTH SIDE OF SR 3431 BRIDGE TO SOUTH SIDE FRENCH BROAD RIVER BRIDGE	1	2.71	39	1,000	500	2,500			3.80	62,005		9,223	5,948	435	330		1,800	28,618	5,724			1.00	2.30
		2	I-26 EASTBOUND	FROM SOUTH SIDE FRENCH BROAD RIVER BRIDGE TO PROJECT R-2813B	2,3	2.42	40.26						3.39	57,130	333	8,257	5,340	390	295	125		25,555					2.05
		3	I-26 WESTBOUND	FROM PROJECT R-2813B TO SOUTH SIDE OF FRENCH BROAD RIVER BRIDGE	2,3	2.42	40.26						3.39	57,130	222	8,257	5,340	390	295	125		25,555					2.05
		4	I-26 WESTBOUND	FROM SOUTH SIDE OF FRENCH BROAD RIVER BRIDGE TO SOUTH SIDE OF SR 3431 BRIDGE	1	2.65	39	1,000	500	2,500	30	2	3.71	60,632		8,883	5,736	420	320		1,700	27,984	5,600	1	1		2.25
		5	I-26 EASTBOUND OFF RAMP	FROM I-26 TO NC 191		5.6,7	0.263						0.26		1,181		515		31								0.16
		6	I-26 EASTBOUND ON RAMP	FROM NC 191 TO I-26		4.6,7	0.418						0.42		560		456		27								0.25
		7	I-26 WESTBOUND OFF RAMP	FROM I-26 TO NC191		4.6,8	0.249						0.25		425		326		20								0.15
		8	I-26 WESTBOUND ON RAMP	FROM NC 191 TO I-26		4.6,8	0.328						0.33		425		571		34								0.20
TOTAL FOR PROJ NO. 45060.3.ST1						11.458		2,000	1,000	5,000	30	2	15.55	236,897	3,146	34,620	24,232	1,635	1,352	250	3,500	107,712	11,324	1	1	1.00	9.41
GRAND TOTAL						11.458		2,000	1,000	5,000	30	2	15.55	236,897	3,146	34,620	24,232	1,635	1,352	250	3,500	107,712	11,324	1	1	1.00	9.41

\* NOTE: Replace Existing Funnel Drain with Catch Basin (Std. 840.01 or 840.02) at Bridge number 211 (See maps for Bridge 211 location)

### SUMMARY OF QUANTITIES

PROJECT NO	COUNTY	MAP NO	ROUTE	DESCRIPTION	EVAZOTE EXPANSION JOINT REPLACEMENT LF	CONCRETE DECK REPAIR USING ELASTOMERIC CONCRETE (CLASS I) SY	CONCRETE DECK REPAIR USING ELASTOMERIC CONCRETE (CLASS II) SY	CONCRETE DECK REPAIR USING ELASTOMERIC CONCRETE (CLASS III) SY	0" TO 5" MILLING SY
45060.3.ST1	Buncombe	1	I-26 EASTBOUND	FROM NORTH SIDE OF SR 3431 BRIDGE TO SOUTH SIDE FRENCH BROAD RIVER BRIDGE	364.00	83.00	37.00	6.00	2,380
		2	I-26 EASTBOUND	FROM SOUTH SIDE FRENCH BROAD RIVER BRIDGE TO PROJECT R-2813B	152.00	4.00	2.00	1.00	430
		3	I-26 WESTBOUND	FROM PROJECT R-2813B TO SOUTH SIDE OF FRENCH BROAD RIVER BRIDGE	152.00	9.00	4.00	2.00	430
		4	I-26 WESTBOUND	FROM SOUTH SIDE OF FRENCH BROAD RIVER BRIDGE TO SOUTH SIDE OF SR 3431 BRIDGE	196.00	4.00	2.00	1.00	1,380
		5	I-26 EASTBOUND OFF RAMP	FROM I-26 TO NC 191					
		6	I-26 EASTBOUND ON RAMP	FROM NC 191 TO I-26					
		7	I-26 WESTBOUND OFF RAMP	FROM I-26 TO NC191					
		8	I-26 WESTBOUND ON RAMP	FROM NC 191 TO I-26					
TOTAL FOR PROJ NO. 45060.3.ST1					864.00	100.00	45.00	10.00	4,620
GRAND TOTAL					864.00	100.00	45.00	10.00	4,620

### THERMOPLASTIC AND PAINT QUANTITIES

PROJECT NO	COUNTY	MAP NO	ROUTE	DESCRIPTION	4405000000-E	4415000000-E	4420000000-N	4430000000-E	4480000000-N	4710000000-E	4725000000-E				4815000000-E		4825000000-E	4847100000-E		4847120000-E	4905000000-N	
					PORTABLE WORK ZONE SIGN SF	FLASHING ARROW PANELS, TYPE C EA	CHANGEABLE MESSAGE SIGN EA	DRUMS EA	TRUCK MTD. IMPACT ATTENUATOR (60 MPH) EA	24" X 120 M WHITE THERMO LF	THERMO LT ARROW 90 M EA	THERMO RT ARROW 90 M EA	THERMO STR & LT ARROW 90 M EA	THERMO STR ARROW 90 M EA	6" WHITE PAINT LF	6" YELLOW PAINT LF	12" WHITE PAINT LF	6" YELLOW POLYUREA HIGHLY REFLECTIVE FI FMPNTRS LF	6" WHITE POLYUREA HIGHLY REFLECTIVE FI FMPNTRS LF	12" WHITE POLYUREA HIGHLY REFLECTIVE FI FMPNTRS LF	SNOW PLOWABLE MARKERS EA	
45060.3.ST1	Buncombe	1	I-26 EASTBOUND	FROM NORTH SIDE OF SR 3431 BRIDGE TO SOUTH SIDE FRENCH BROAD RIVER BRIDGE	192	2	4	200	2							17,886	14,309	434	14,309	17,886	434	179
		2	I-26 EASTBOUND	FROM SOUTH SIDE FRENCH BROAD RIVER BRIDGE TO PROJECT R-2813B												15,972	12,778		12,778	15,972		160
		3	I-26 WESTBOUND	FROM PROJECT R-2813B TO SOUTH SIDE OF FRENCH BROAD RIVER BRIDGE												15,972	12,778		12,778	15,972		160
		4	I-26 WESTBOUND	FROM SOUTH SIDE OF FRENCH BROAD RIVER BRIDGE TO SOUTH SIDE OF SR 3431 BRIDGE												17,490	13,992	497	13,992	17,490	497	175
		5	I-26 EASTBOUND OFF RAMP	FROM I-26 TO NC 191						54	5	5	5			1,389	1,389	159	1,389	1,389	159	16
		6	I-26 EASTBOUND ON RAMP	FROM NC 191 TO I-26								3		3		2,207	2,207	275	2,207	2,207	275	30
		7	I-26 WESTBOUND OFF RAMP	FROM I-26 TO NC191						32	1	1		1		1,315	1,315	180	1,315	1,315	180	18
		8	I-26 WESTBOUND ON RAMP	FROM NC 191 TO I-26							7	7		7		1,732	1,732	317	1,732	1,732	317	32
TOTAL FOR PROJ NO. 45060.3.ST1					192	2	4	200	2	86	6	9	5	11		73,962	60,498	1,862	60,498	73,962	1,862	770
GRAND TOTAL					192	2	4	200	2	86	6	9	5	11		73,962	60,498	1,862	60,498	73,962	1,862	770