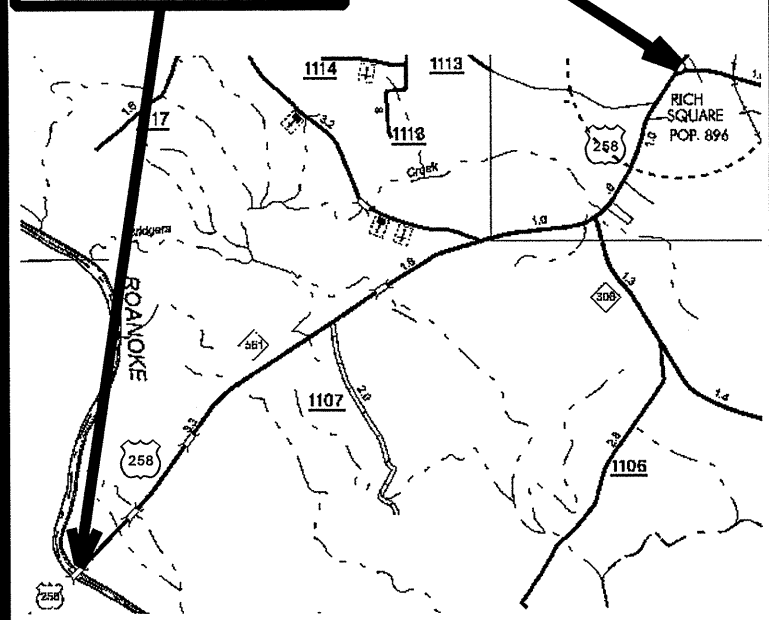


END PROJECT

BEGIN PROJECT



STATE OF NORTH CAROLINA  
DIVISION OF HIGHWAYS

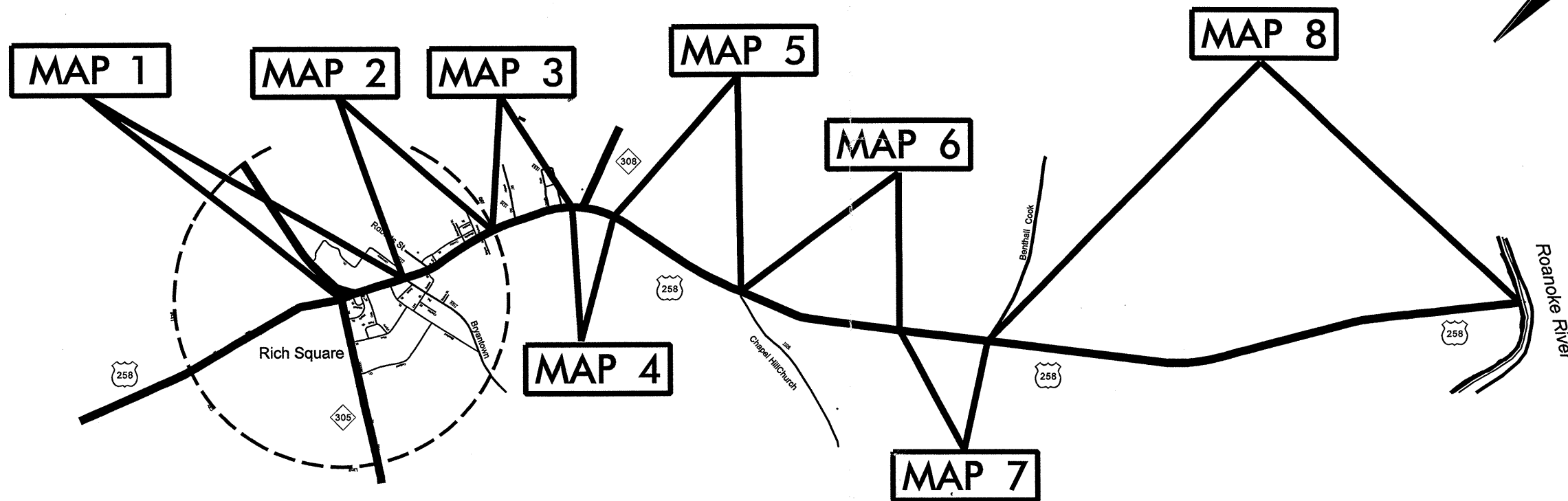
**NORTHAMPTON COUNTY**

LOCATION: US 258 - FROM NC 305 (IN RICH SQUARE, NC)  
TO ROANOKE RIVER (BRIDGE # 23)

TYPE OF WORK: MILLING, RESURFACING, UTILITY ADJUSTMENTS, CURB &  
GUTTER REPLACEMENT, AND SHOULDER RECONSTRUCTION

STATE	STATE PROJECT REFERENCE NO.	SHEET NO.	TOTAL SHEETS
N.C.	R-5122	1	
STATE PROJ. NO.	F.A. PROJ. NO.	DESCRIPTION	
45022.3.ST1	STM-0258(15)		

VICINITY MAP



CONTRACT NUMBER: C202285

**NTS**

PROJECT LENGTH

LENGTH ROADWAY STATE PROJECT = 7.45 MILES

TOTAL LENGTH STATE PROJECT = 7.45 MILES

Prepared in the Office of:  
**DIVISION OF HIGHWAYS**

113 Airport Dr., Edenton NC, 27932

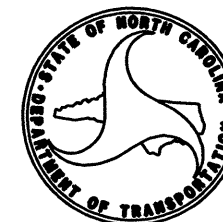
2006 STANDARD SPECIFICATIONS

LETTING DATE:  
APRIL 21, 2009

W.B. Hobbs, P.E.  
DIVISION PROJECT MANAGER

C.E. Slachta  
DIVISION PROPOSALS ENGINEER

DIVISION OF HIGHWAYS  
STATE OF NORTH CAROLINA



**TYPICAL #1 NOTES:**

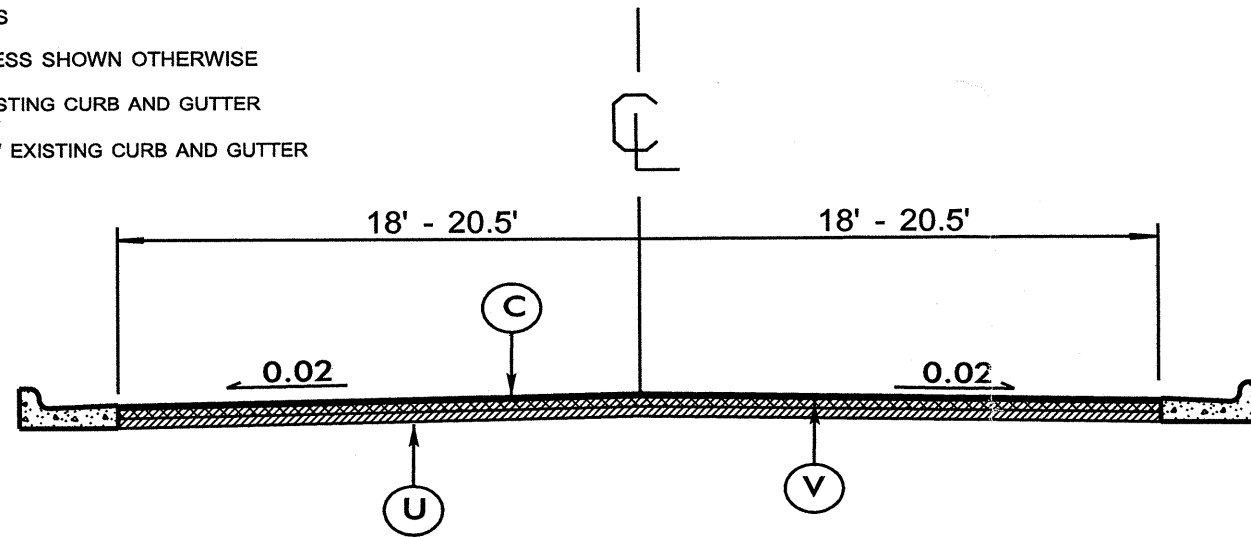
\*ALL PAVED S.R. ROADS TO BE RESURFACED TO THE ENDS OF THE RADII, OR AS DIRECTED BY THE ENGINEER

\*EDGES, PAVEMENT WIDENING, INTERSECTIONS, AND BRIDGE FLARES ARE INCLUDED IN THE TABLE OF QUANTITIES

\*PAVEMENT EDGE SLOPES ARE 1:1 UNLESS SHOWN OTHERWISE

\*ALL ASPHALT TO BE REMOVED FROM EXISTING CURB AND GUTTER

\*ALL ASPHALT TO BE MILLED 1 1/2" BELOW EXISTING CURB AND GUTTER

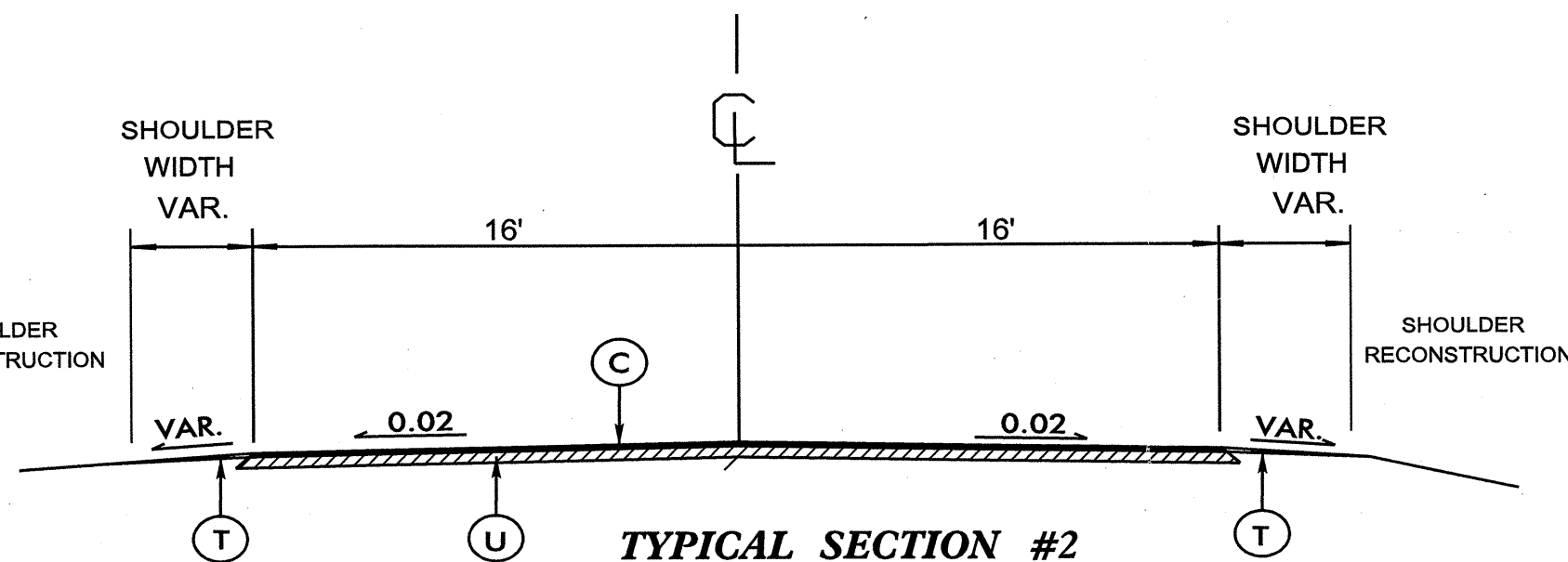


**TYPICAL SECTION #1**

USE WITH MAPS 1, 2, AND  
CURBING SECTION OF MAP 4

PROJECT REFERENCE NO.	SHEET NO.
R-5122 45022.3.ST1	2

(C)	PROP. APPROX. 1.5" ACSC TYPE S9.5B AT AN AVERAGE RATE OF 168.0 LBS. PER SQ. YD.
(T)	EARTH MATERIAL
(U)	EXISTING PAVEMENT
(V)	VARIABLE DEPTH MILLING BITUMINOUS PAVEMENT 1.5" to 3"



**TYPICAL SECTION #2**

USE WITH MAPS 3, 5-8, AND  
SHOULDER SECTION OF MAP 4

**TYPICAL #2 NOTES:**

\*ALL PAVED S.R. ROADS TO BE RESURFACED TO THE ENDS OF THE RADII, OR AS DIRECTED BY THE ENGINEER

\*EDGES, PAVEMENT WIDENING, INTERSECTIONS, AND BRIDGE FLARES ARE INCLUDED IN THE TABLE OF QUANTITIES

\*BRIDGES TO BE SURFACED AT LOCATIONS AND TO DEPTH AS DIRECTED BY ENGINEER

\*PAVEMENT EDGE SLOPES ARE 1:1 UNLESS SHOWN OTHERWISE

\*SHOULDER RECONSTRUCTION TO BE PERFORMED AS DIRECTED BY THE ENGINEER

PROJECT NO.	SHEET NO.	TOTAL NO.
R - 5122 45022.3.ST1	3	

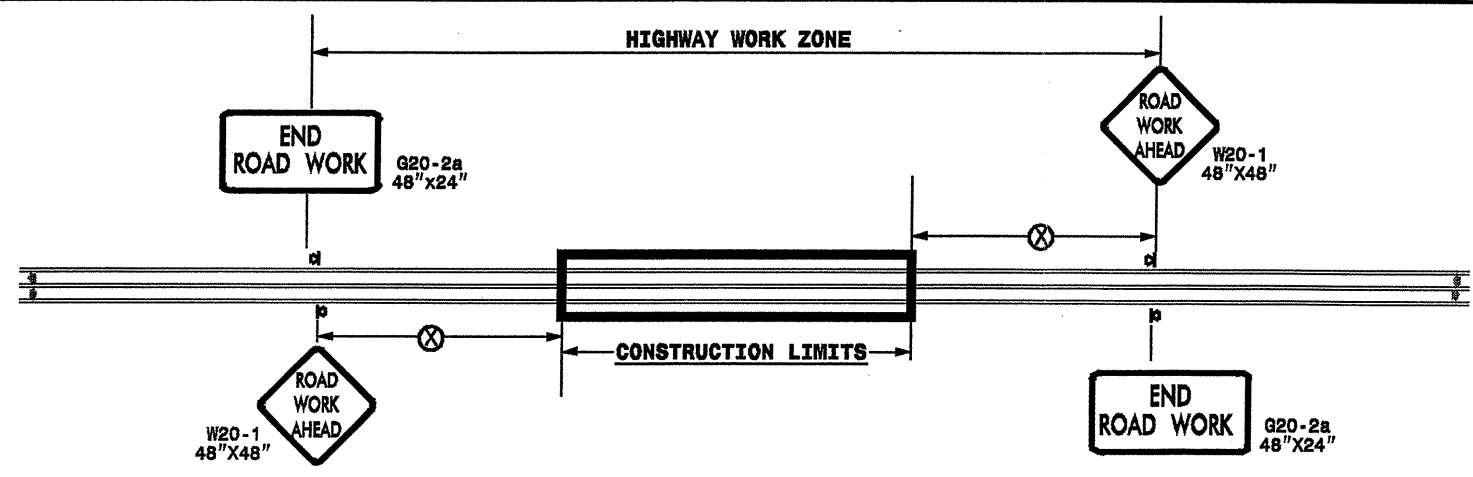
### SUMMARY OF QUANTITIES

PROJECT NO	COUNTY	MAP NO	ROUTE	DESCRIPTION	TYP NO	LENGTH MI	WIDTH FT	INCIDENTAL STONE BASE TONS	SHOULDER RECONSTRUCTION SMI	VARIABLE DEPTH MILLING 1.5" TO 3.0" SY	SURFACE COURSE, S9.5B TONS	PG 64-22 PLANT MIX TONS	PATCHING EXISTING PAVEMENT TONS	2'-6" CURB & GUTTER LF	4" CONCRETE SIDEWALK SY	WHEELCHAIR RAMPS EA	5" MONOLITHIC CONCRETE ISLAND (KEYED-IN) SY	RETROFIT EXT. WHEELCHAIR RAMPS EA	ADJ. OF MANHOLES EA	ADJ. OF METER OR VALVE BOX EA	SEED & MULCHING AC	TRAFFIC CONTROL LS		
R - 5122	Northampton	1	US 258	FROM NC 305 SR 1109	1	0.4	41			10,100	915	61			15	5		3				*		
	Northampton	2	US 258	FROM SR 1109 TO END CURB & GUTTER	1	0.61	36.5			13,000	1,165	88	150	200	15	3		2	12	5		*		
	Northampton	3	US 258	FROM END CURBING TO BEGIN NC 308 TURN LANE	2	0.45	32	65	0.9		800	53										0.66	*	
	Northampton	4	US 258	FROM BEGIN NC 308 TURN LANE TO END TURN LANE	1-2	0.21	40	50	0.12	5,625	600	43	30	75				440					0.12	*
	Northampton	5	US 258	FROM END TAPER TO SR 1108	2	1.02	32	50	2.04		1,730	115											1.53	*
	Northampton	6	US 258	FROM SR 1108 TO JOINT AT BRIDGE # 76	2	0.85	32	50	1.7		1,400	93											1.27	*
	Northampton	7	US 258	FROM JOINT AT BRIDGE # 76 TO SR 1107	2	0.41	32	15	0.82		700	47											0.61	*
	Northampton	8	US 258	FROM SR 1107 TO ROANOKE RIVER	2	3.5	32	25	7		5,750	381											5.25	*
<b>TOTAL FOR PROJ NO. 45022.3.ST1</b>						<b>7.45</b>		<b>255</b>	<b>12.58</b>	<b>28,725</b>	<b>13,060</b>	<b>881</b>	<b>180</b>	<b>275</b>	<b>30</b>	<b>8</b>	<b>440</b>	<b>5</b>	<b>12</b>	<b>5</b>	<b>9.44</b>	<b>1</b>		
<b>GRAND TOTAL</b>						<b>7.45</b>		<b>255</b>	<b>12.58</b>	<b>28,725</b>	<b>13,060</b>	<b>881</b>	<b>180</b>	<b>275</b>	<b>30</b>	<b>8</b>	<b>440</b>	<b>5</b>	<b>12</b>	<b>5</b>	<b>9.44</b>	<b>1</b>		

### THERMOPLASTIC AND PAINT QUANTITIES

PROJECT NO	COUNTY	MAP NO	ROUTE	DESCRIPTION	4" X 90 M WHITE THERMO LF	4" X 120 M YELLOW THERMO LF	8" X 120 M YELLOW THERMO LF	24" X 120 M WHITE THERMO LF	THERMO MESSAGE SCHOOL 120M EA	THERMO LT ARROW-90M EA	THERMO RT ARROW-90M EA	4" YELLOW PAINT LF	4" WHITE PAINT LF	PERMANENT RAISED YELLOW & YELLOW MARKERS EA	PERMANENT RAISED CRYSTAL & RED MARKERS EA
R - 5122	Northampton	1	US 258	FROM NC 305 SR 1109		4,200		30			1	8,400		27	10
	Northampton	2	US 258	FROM SR 1109 TO END CURB & GUTTER		8,000	100	100	12	16		14,400		81	10
	Northampton	3	US 258	FROM END CURBING TO BEGIN NC 308 TURN LANE	4,800	4,950						9,504		30	
	Northampton	4	US 258	FROM BEGIN NC 308 TURN LANE TO END TURN LANE	2,400	3,000	200			2	1	4,500	100	14	15
	Northampton	5	US 258	FROM END TAPER TO SR 1108	10,975	6,752						6,734		68	
	Northampton	6	US 258	FROM SR 1108 TO JOINT AT BRIDGE # 76	9,146	5,610						5,610		57	
	Northampton	7	US 258	FROM JOINT AT BRIDGE # 76 TO SR 1107	4,416	2,707						2,707		28	
	Northampton	8	US 258	FROM SR 1107 TO ROANOKE RIVER	37,660	23,100						23,100		231	
<b>TOTAL FOR PROJ NO. 45022.3.ST1</b>					<b>69,397</b>	<b>58,319</b>	<b>300</b>	<b>130</b>	<b>12</b>	<b>18</b>	<b>2</b>	<b>74,955</b>	<b>100</b>	<b>536</b>	<b>35</b>
<b>GRAND TOTAL</b>										<b>20</b>		<b>75,055</b>		<b>571</b>	
<b>GRAND TOTAL</b>					<b>69,397</b>	<b>58,319</b>	<b>300</b>	<b>130</b>	<b>12</b>	<b>18</b>	<b>2</b>	<b>74,955</b>	<b>100</b>	<b>536</b>	<b>35</b>
<b>GRAND TOTAL</b>										<b>20</b>		<b>75,055</b>		<b>571</b>	

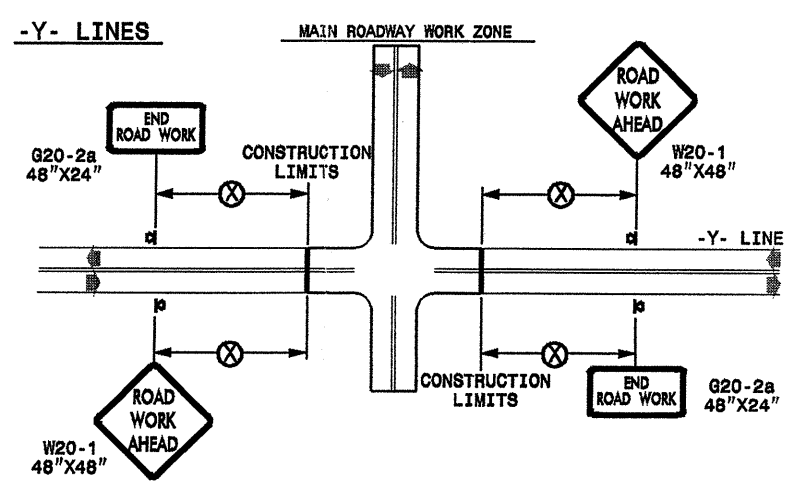
**TWO-WAY UNDIVIDED \*\* (L-LINES)**



POSTED SPEED LIMIT (M.P.H.)	RECOMMENDED MINIMUM SIGN SPACING
≤ 50	500'
≥ 55	1000'

STATE OF NORTH CAROLINA  
DEPT. OF TRANSPORTATION  
DIVISION OF HIGHWAYS  
RALEIGH, N.C.

**ROADWAYS INTERSECTING ALONG 2 WAY UNDIVIDED WORK ZONE (Y-LINES)**



DETAIL DRAWING  
FOR TWO-WAY UNDIVIDED  
WORK ZONE WARNING SIGNS

**GENERAL NOTES**

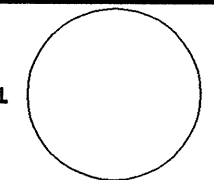
- USE FLUORESCENT ORANGE SHEETING (TYPE VII OR HIGHER) ON ALL ADVANCE WORK ZONE SIGNS.
- DO NOT INSTALL ADVANCE WARNING SIGNS MORE THAN 3 DAYS PRIOR TO BEGINNING OF WORK.
- ALL SIGN SPACING DIMENSIONS ARE APPROXIMATE, FIELD ADJUST AS NECESSARY OR AS DIRECTED.
- USE PORTABLE WORK ZONE SIGNS ONLY WITH PORTABLE WORK ZONE SIGN STANDS SPECIFICALLY DESIGNED FOR ONE ANOTHER. PORTABLE WORK ZONE SIGNS MAY BE ROLL UP OR APPROVED COMPOSITE.
- PROVIDE PORTABLE WORK ZONE SIGN STANDS, PORTABLE SIGNS AND SIGN SHEETING WHICH ARE LISTED ON THE NORTH CAROLINA DEPARTMENT OF TRANSPORTATION'S APPROVED PRODUCT LIST OR ACCEPTED AS TRAFFIC QUALIFIED BY THE TRAFFIC CONTROL UNIT.
- \*\* TWO-WAY UNDIVIDED ADVANCE WARNING SIGN CONFIGURATION MAY BE USED ON URBAN MULTI-LANE FACILITIES WHERE CONDITIONS LIMIT THE USE OF DUAL MOUNTED SIGNS AS DETERMINED BY THE ENGINEER.

**LEGEND**

☒ PORTABLE SIGN

➔ DIRECTION OF TRAFFIC FLOW

SHEET 1 OF 1

APPROVED: _____	DATE: _____
SEAL 	
DETAIL DRAWING FOR TWO-WAY UNDIVIDED ADVANCED WORK ZONE WARNING SIGNS	
SCALE: NONE	REVISIONS
DATE: _____	7-98 10/01
DWG. BY: _____	10-98 03/04
DESIGN BY: _____	01/01 11/04
REVIEWED BY: _____	SCALE: _____

21-FEB-2009 19:26  
 d:\resurfacing\0508\resurfacing\dwg\c202285.os6\_450223s1.r-5122.2woyundivurbtrfwysjuly2006.dgn  
 peymore AT WZTC237502