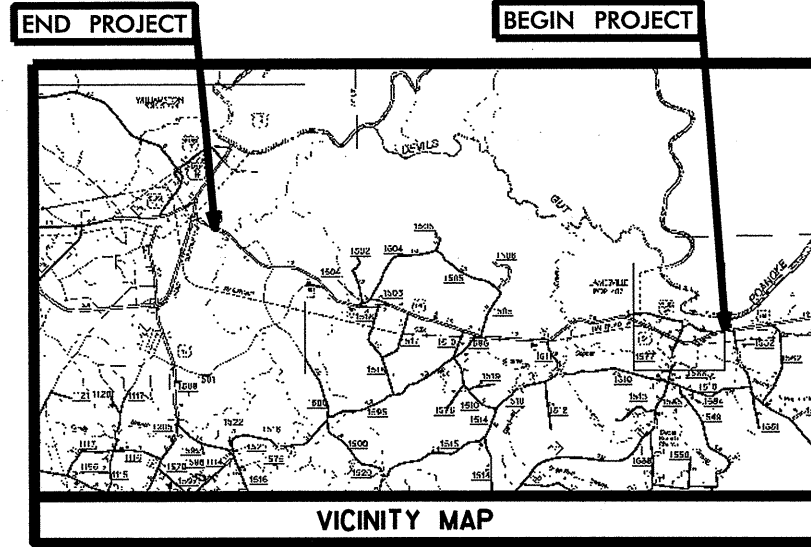


STATE OF NORTH CAROLINA
DIVISION OF HIGHWAYS

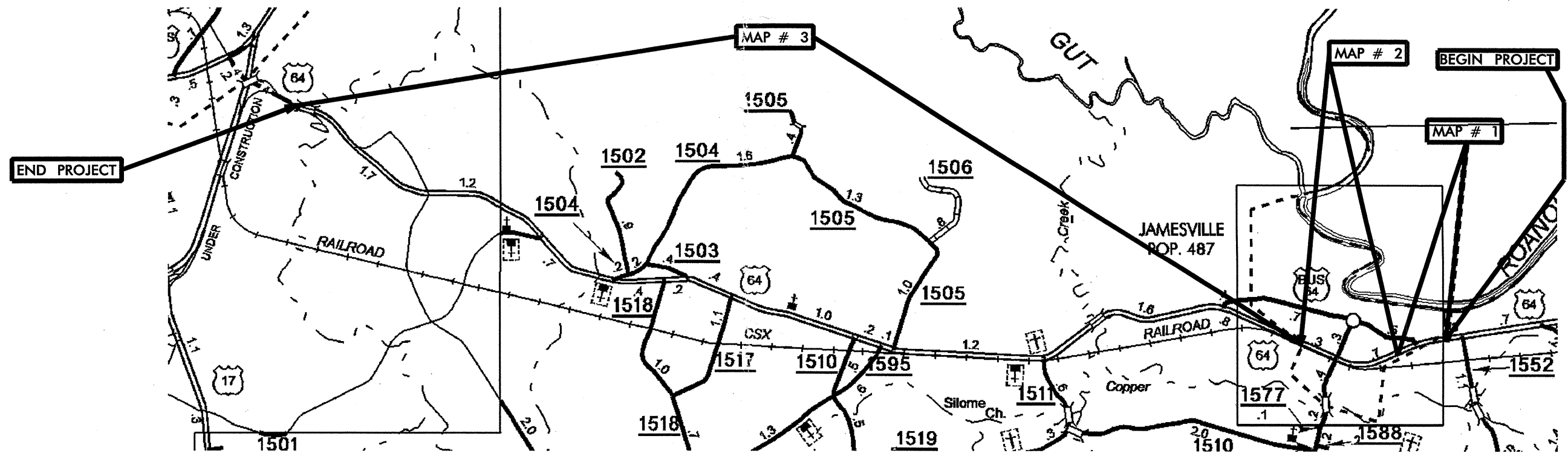
MARTIN COUNTY

| STATE | STATE PROJECT REFERENCE NO. | SHEET NO. | TOTAL SHEETS |
|---------------|-----------------------------|-------------|--------------|
| N.C. | R-5120 | 1 | |
| STATE PROGRAM | F.A. PROGRAM | DESCRIPTION | |
| 45020.3.ST1 | STM-0064(117) | | |



LOCATION: US64 (FROM EAST CITY LIMIT JAMESVILLE
TO NEW PAVEMENT WEST OF SWEETWATER CREEK)

TYPE OF WORK: MILLING, RESURFACING AND PAVEMENT MARKINGS



CONTRACT NUMBER: C202283

NTS

PROJECT LENGTH

LENGTH ROADWAY STATE PROJCT = 9.71

TOTAL LENGHT STATE PROJCT = 9.71

Prepared In the Office of:
DIVISION OF HIGHWAYS

113 Airport Dr., Suite 100 Edenton, NC 27932

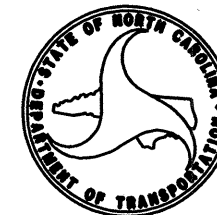
2006 STANDARD SPECIFICATIONS

LETTING DATE:
APRIL 21, 2009

W.B. Hobbs, P.E.
DIVISION PROJECT MANAGER

C.E. Slachta
DIVISION PROPOSALS ENGINEER

DIVISION OF HIGHWAYS
STATE OF NORTH CAROLINA



| PAVEMENT SCHEDULE | |
|-------------------|--|
| C | PROP. APPROX. 2 " ASPHALT CONCRETE SURFACE COURSE, TYPE S9.5C AT AN AVERAGE RATE OF 224 LBS. PER SQ. YD. |
| U | EXISTING PAVEMENT. |
| V | MILLING BITUMINOUS PAVEMENT. 2" DEPTH. |

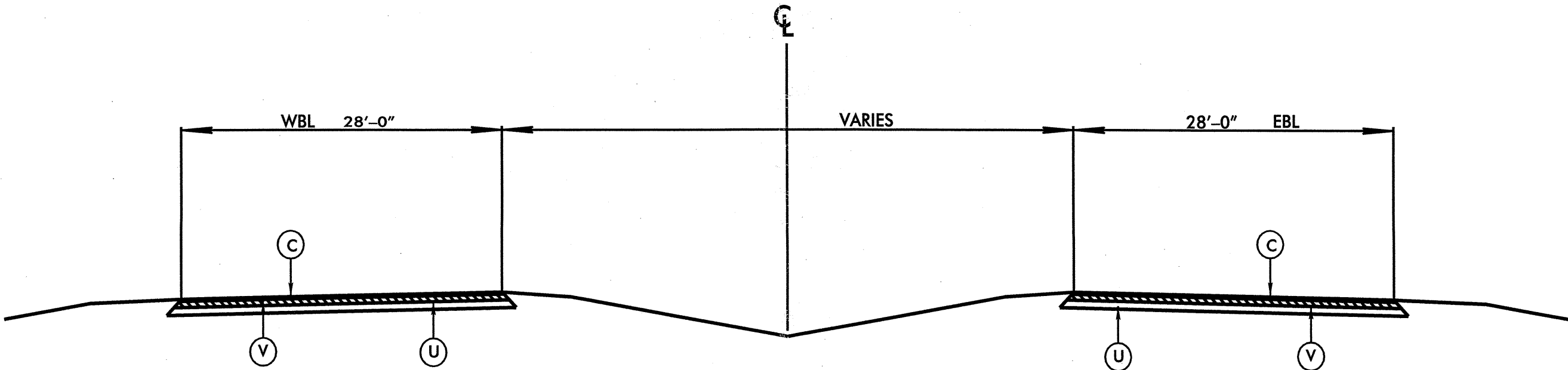
CONSTRUCTION SEQUENCE

1. PERFORM MILLING OPERATIONS AS DIRECTED BY ENGINEER
2. PLACE S9.5C AND PAVEMENT MARKINGS

NOTE: PAVEMENT EDGE SLOPES ARE 1 : 1 UNLESS SHOWN OTHERWISE.

NOTE:

ALL TURN LANES AND CROSS-OVERS WILL BE MILLED AND RESURFACED WITH S 9.5 C.



TYPICAL SECTION NO. 1

USE WITH MAPS 1 & 3

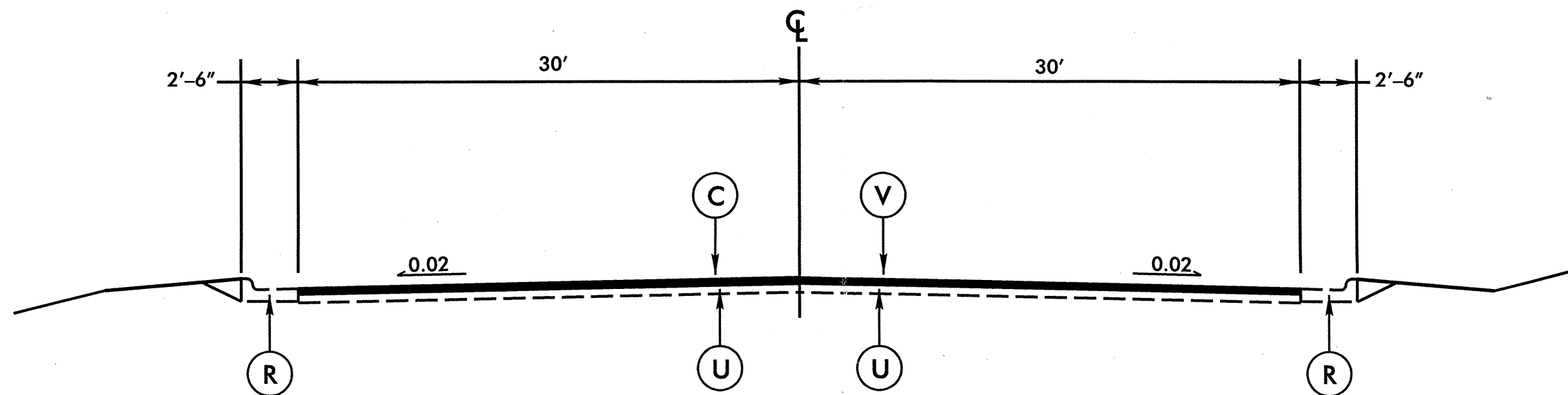
* MATCH EXISTING PAVEMENT CROSS SLOPE

| PAVEMENT SCHEDULE | |
|-------------------|---|
| C | PROP. APPROX. 2" ASPHALT CONCRETE SURFACE COURSE, TYPE S9.5C, AT AN AVERAGE RATE OF 224 LBS. PER SQUARE YARD. |
| R | EXISTING 2' 6" CURB AND GUTTER |
| U | EXISTING PAVEMENT |
| V | MILLING BITUMINOUS PAVEMENT 2" DEPTH BELOW EDGE OF EXISTING GUTTER PAN WITH 0.025 CROSS SLOPE TO CENTERLINE |

NOTE: PAVEMENT EDGE SLOPE ARE 1:1 UNLESS SHOWN OTHERWISE

CONSTRUCTION SEQUENCE

1. PERFORM MILLING OPERATIONS AS DIRECTED BY ENGINEER
2. PLACE S9.5C AND PAVEMENT MARKINGS



TYPICAL SECTION NO. 2

USE WITH MAP 2

| | | |
|--------------------|-----------|-----------|
| PROJECT NO. | SHEET NO. | TOTAL NO. |
| R-5120 45020.3.ST1 | 4 | |

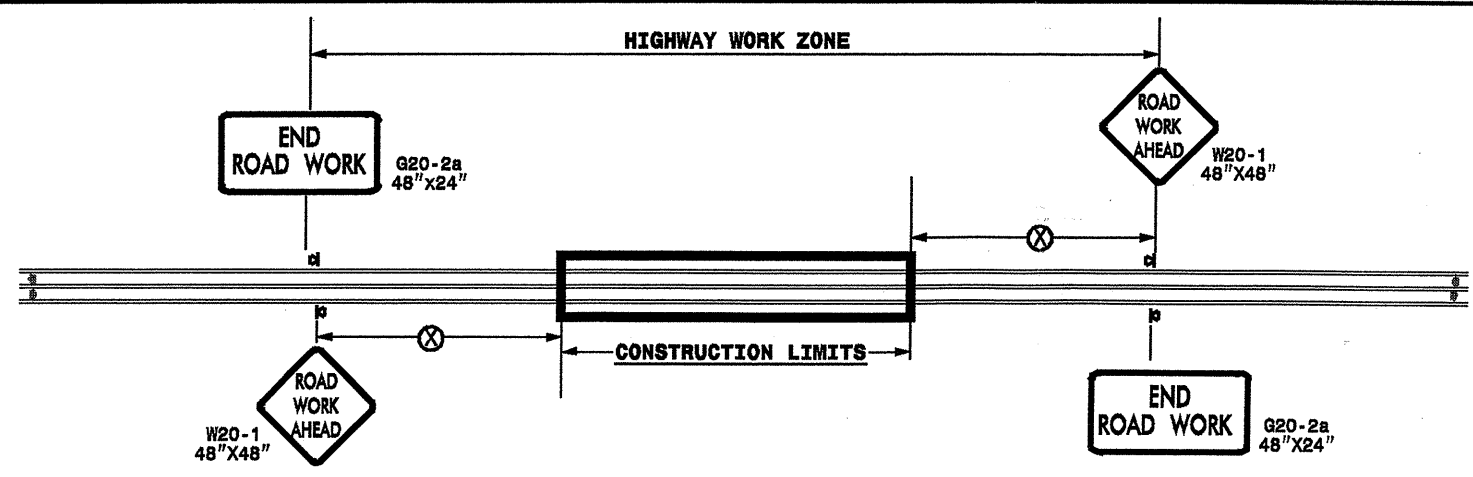
SUMMARY OF QUANTITIES

| PROJECT NO | COUNTY | MAP NO | ROUTE | DESCRIPTION | TYP NO | LENGTH MI | WIDTH FT | 2" MILLING SY | INCIDENTAL STONE TONS | SURFACE COURSE, S9.5C TONS | PG 70-22 PLANT MIX TONS | TRAFFIC CONTROL LS |
|---------------------------------------|--------|--------|---|--|--------|-------------|----------|----------------|-----------------------|----------------------------|-------------------------|--------------------|
| R-5120 | Martin | 1 | US 64 (FROM ECL JAMESVILLE TO BEGIN CURB & GUTTER) | MILLING, RESURFACING & PAVEMENT MARKINGS | 1 | 0.35 | 56 | 12,334 | | 1,531 | 92 | * |
| R-5120 | Martin | 2 | US64 (FROM BEGIN CURB & GUTTER TO END OF CURB & GUTTER) | MILLING, RESURFACING & PAVEMENT MARKINGS | 2 | 1.16 | 60 | 43,496 | | 5,044 | 303 | * |
| R-5120 | Martin | 3 | US64 (FROM END CURB & GUTTER TO NEW PAVEMENT WEST OF SWEET WATER CREEK) | MILLING, RESURFACING & PAVEMENT MARKINGS | 1 | 8.2 | 56 | 296,601 | 500 | 36,630 | 2,198 | * |
| TOTAL FOR PROJ NO. 45020.3.ST1 | | | | | | 9.71 | | 352,431 | 500 | 43,205 | 2,593 | 1 |
| GRAND TOTAL | | | | | | 9.71 | | 352,431 | 500 | 43,205 | 2,593 | 1 |

THERMOPLASTIC AND PAINT QUANTITIES

| PROJECT NO | COUNTY | MAP NO | ROUTE | DESCRIPTION | 4" X 90 M WHITE THERMO LF | 4" X 90 M YELLOW THERMO LF | 4" X 120 M WHITE THERMO LF | 4" X 120 M YELLOW THERMO LF | 16" X 120 M WHITE THERMO LF | 24" X 120 M WHITE THERMO LF | THERMO RXR 120 M EA | THERMO LT ARROW 90 M EA | THERMO STR ARROW 90 M EA | THERMO RT ARROW 90 M EA | THERMO STR & RT ARROW 90 M EA | 4" WHITE PAINT LF | 4" YELLOW PAINT LF | 16" WHITE PAINT LF | 24" WHITE PAINT LF | PAINT MSG RXR EA | PAINT STR ARROW EA | PAINT RT ARROW EA | PAINT LT ARROW EA | PAINT STR & RT ARROW EA | PERMANENT RAISED CRYSTAL & RED MARKERS EA | PERMANENT RAISED YELLOW & YELLOW MARKERS EA |
|---------------------------------------|--------|--------|---|--|---------------------------|----------------------------|----------------------------|-----------------------------|-----------------------------|-----------------------------|---------------------|-------------------------|--------------------------|-------------------------|-------------------------------|-------------------|--------------------|--------------------|--------------------|------------------|--------------------|-------------------|-------------------|-------------------------|---|---|
| R-5120 | Martin | 1 | US 64 (FROM ECL JAMESVILLE TO BEGIN CURB & GUTTER) | MILLING, RESURFACING & PAVEMENT MARKINGS | 3,836 | 4,000 | 924 | | | | | 4 | 8 | 2 | | 4,760 | 4,000 | | | | 8 | 2 | 4 | | 100 | |
| R-5120 | Martin | 2 | US64 (FROM BEGIN CURB & GUTTER TO END OF CURB & GUTTER) | MILLING, RESURFACING & PAVEMENT MARKINGS | | | 3,062 | 15,310 | 50 | 513 | 2 | 44 | 6 | | 6 | 3,062 | 15,310 | 50 | 213 | 2 | 6 | | 44 | 6 | 154 | 154 |
| R-5120 | Martin | 3 | US64 (FROM END CURB & GUTTER TO NEW PAVEMENT WEST OF SWEET WATER CREEK) | MILLING, RESURFACING & PAVEMENT MARKINGS | 108,240 | 108,240 | 24,928 | | | | | 60 | 220 | 60 | 40 | 133,168 | 108,240 | | | | 220 | 60 | 60 | 40 | 1,082 | |
| TOTAL FOR PROJ NO. 45020.3.ST1 | | | | | 112,076 | 112,240 | 28,914 | 15,310 | 50 | 513 | 2 | 108 | 234 | 62 | 46 | 140,990 | 127,550 | 50 | 213 | 2 | 234 | 62 | 108 | 46 | 1,336 | 154 |
| | | | | | 224,316 | | 44,224 | | | | | 450 | | | 268,540 | | | | | 450 | | | 1,490 | | | |
| GRAND TOTAL | | | | | 112,076 | 112,240 | 28,914 | 15,310 | | | | 108 | 234 | 62 | 46 | 140,990 | 127,550 | | | | 234 | 62 | 108 | 46 | 1,336 | 154 |
| | | | | | 224,316 | | 44,224 | | 50 | 513 | 2 | 450 | | | 268,540 | | 50 | 213 | 2 | 450 | | | 1,490 | | | |

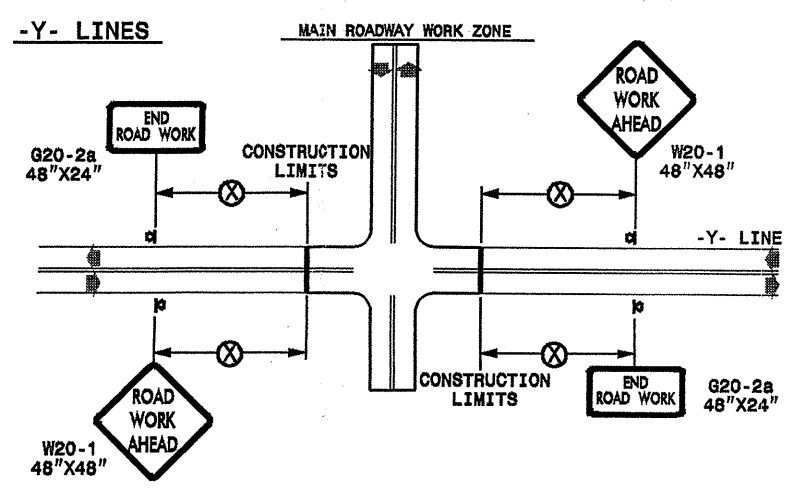
TWO-WAY UNDIVIDED ** (L-LINES)



| POSTED SPEED LIMIT (M.P.H.) | RECOMMENDED MINIMUM SIGN SPACING |
|-----------------------------|----------------------------------|
| ≤ 50 | 500' |
| ≥ 55 | 1000' |

STATE OF NORTH CAROLINA
DEPT. OF TRANSPORTATION
DIVISION OF HIGHWAYS
RALEIGH, N.C.

ROADWAYS INTERSECTING ALONG 2 WAY UNDIVIDED WORK ZONE (Y-LINES)



GENERAL NOTES

- USE FLUORESCENT ORANGE SHEETING (TYPE VII OR HIGHER) ON ALL ADVANCE WORK ZONE SIGNS.
- DO NOT INSTALL ADVANCE WARNING SIGNS MORE THAN 3 DAYS PRIOR TO BEGINNING OF WORK.
- ALL SIGN SPACING DIMENSIONS ARE APPROXIMATE, FIELD ADJUST AS NECESSARY OR AS DIRECTED.
- USE PORTABLE WORK ZONE SIGNS ONLY WITH PORTABLE WORK ZONE SIGN STANDS SPECIFICALLY DESIGNED FOR ONE ANOTHER. PORTABLE WORK ZONE SIGNS MAY BE ROLL UP OR APPROVED COMPOSITE.
- PROVIDE PORTABLE WORK ZONE SIGN STANDS, PORTABLE SIGNS AND SIGN SHEETING WHICH ARE LISTED ON THE NORTH CAROLINA DEPARTMENT OF TRANSPORTATION'S APPROVED PRODUCT LIST OR ACCEPTED AS TRAFFIC QUALIFIED BY THE TRAFFIC CONTROL UNIT.
- ** TWO-WAY UNDIVIDED ADVANCE WARNING SIGN CONFIGURATION MAY BE USED ON URBAN MULTI-LANE FACILITIES WHERE CONDITIONS LIMIT THE USE OF DUAL MOUNTED SIGNS AS DETERMINED BY THE ENGINEER.

LEGEND

⊠ PORTABLE SIGN

➔ DIRECTION OF TRAFFIC FLOW

DETAIL DRAWING
FOR TWO-WAY UNDIVIDED
WORK ZONE WARNING SIGNS

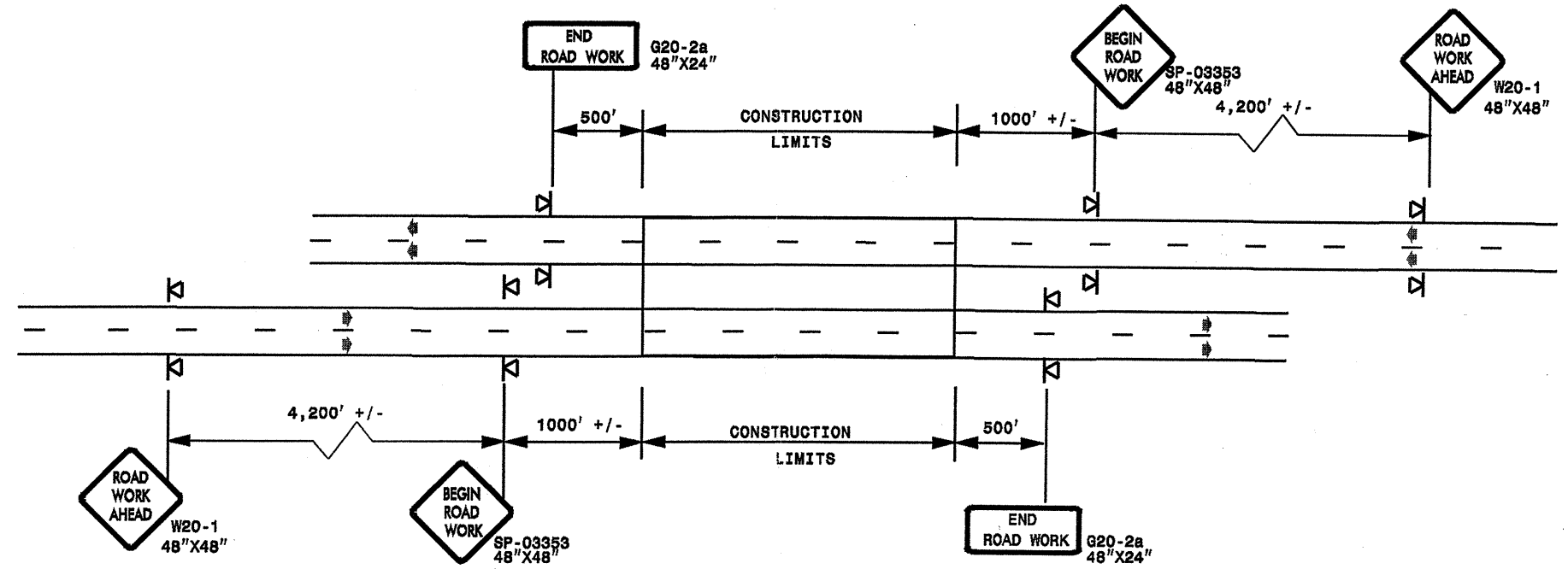
SHEET 1 OF 1

| | | | |
|-----------------|-------------|---|-------------|
| APPROVED: _____ | DATE: _____ | DETAIL DRAWING FOR TWO-WAY UNDIVIDED ADVANCED WORK ZONE WARNING SIGNS | |
| SEAL | SCALE: NONE | | REVISIONS |
| | DATE: | | 7-98 10/01 |
| | DWG. BY: | | 10-98 03/04 |
| | DESIGN BY: | | 01/01 11/04 |
| REVIEWED BY: | | | FILE |

21-FEB-2009 10:39
 d:\resurfacing\10508\resurfacing\div01\c202283.os5.450203st1.r-5120.martin.us64\c202055.mnm.martin.2woyundivurbfrwysjuly2006.dgn
 pseymore AT WZTC237502

ADVANCE WORK ZONE WARNING SIGNING FOR FREEWAYS (4 LANES OR GREATER)

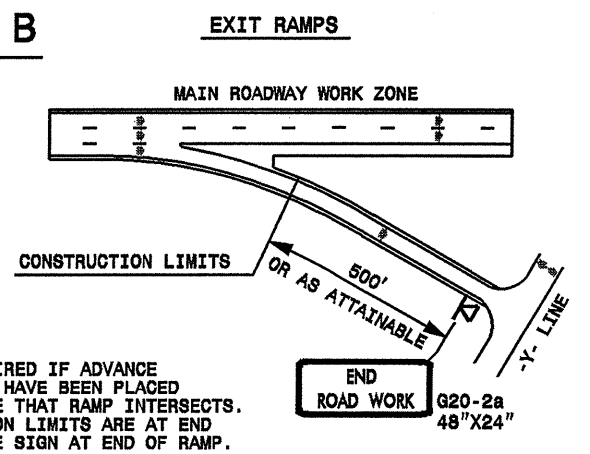
DETAIL A



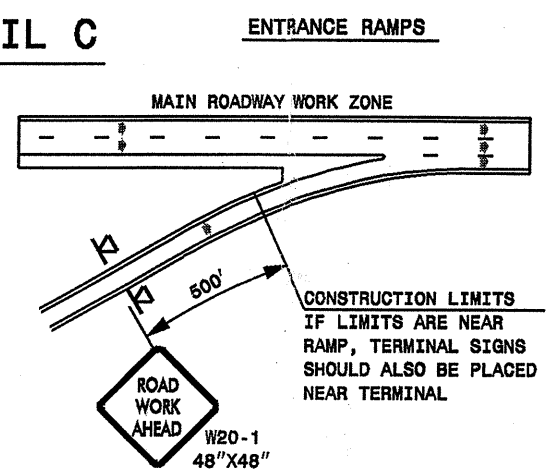
STATE OF NORTH CAROLINA
DEPT. OF TRANSPORTATION
DIVISION OF HIGHWAYS
RALEIGH, N.C.

ROADWAYS INTERSECTING ALONG FREEWAY WORK ZONE (Y-LINES)

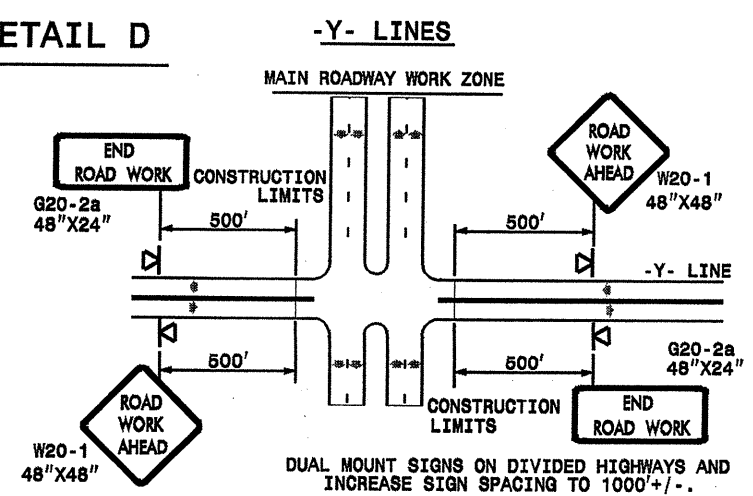
DETAIL B



DETAIL C



DETAIL D



**DETAIL DRAWING
FOR FREEWAYS
WORK ZONE WARNING SIGNS
(SHORT-DURATION LANE CLOSURES)**

GENERAL NOTES

- USE FLUORESCENT ORANGE SHEETING (TYPE VII OR HIGHER) ON ALL ADVANCE WORK ZONE SIGNS.
- DO NOT INSTALL ADVANCE WARNING SIGNS MORE THAN 3 DAYS PRIOR TO BEGINNING OF WORK.
- ALL SIGN SPACING DIMENSIONS ARE APPROXIMATE, FIELD ADJUST AS NECESSARY OR AS DIRECTED.
- USE PORTABLE WORK ZONE SIGNS ONLY WITH PORTABLE WORK ZONE SIGN STANDS SPECIFICALLY DESIGNED FOR ONE ANOTHER. PORTABLE WORK ZONE SIGNS MAY BE ROLL UP OR APPROVED COMPOSITE.
- PROVIDE PORTABLE WORK ZONE SIGN STANDS, PORTABLE SIGNS AND SIGN SHEETING WHICH ARE LISTED ON THE NORTH CAROLINA DEPARTMENT OF TRANSPORTATION'S APPROVED PRODUCT LIST OR ACCEPTED AS TRAFFIC QUALIFIED BY THE TRAFFIC CONTROL UNIT.
- ** TWO-WAY UNDIVIDED ADVANCE WARNING SIGN CONFIGURATION MAY BE USED ON MULTI-LANE FACILITIES WHERE CONDITIONS LIMIT THE USE OF DUAL MOUNTED SIGNS AS DETERMINED BY THE ENGINEER.

LEGEND

◀ PORTABLE SIGN

➡ DIRECTION OF TRAFFIC FLOW

APPROVED: _____ DATE: _____

SEAL

| | |
|---|-------------|
| DETAIL DRAWING FOR FREEWAYS WORK ZONE WARNING SIGNS | |
| SCALE: NONE | REVISIONS |
| DATE: _____ | 7-98 10/01 |
| DWG. BY: _____ | 10-98 03/04 |
| DESIGN BY: _____ | 01/01 11/04 |
| REVIEWED BY: _____ | |

21-FEB-2009 10:40 d:\resurfacing\40508\resurfacing\div\c202283.os5-450203st1.r-5120.martin.us64\c2020s5.mmm.martin.freewaysgeatJuly2006.dgn