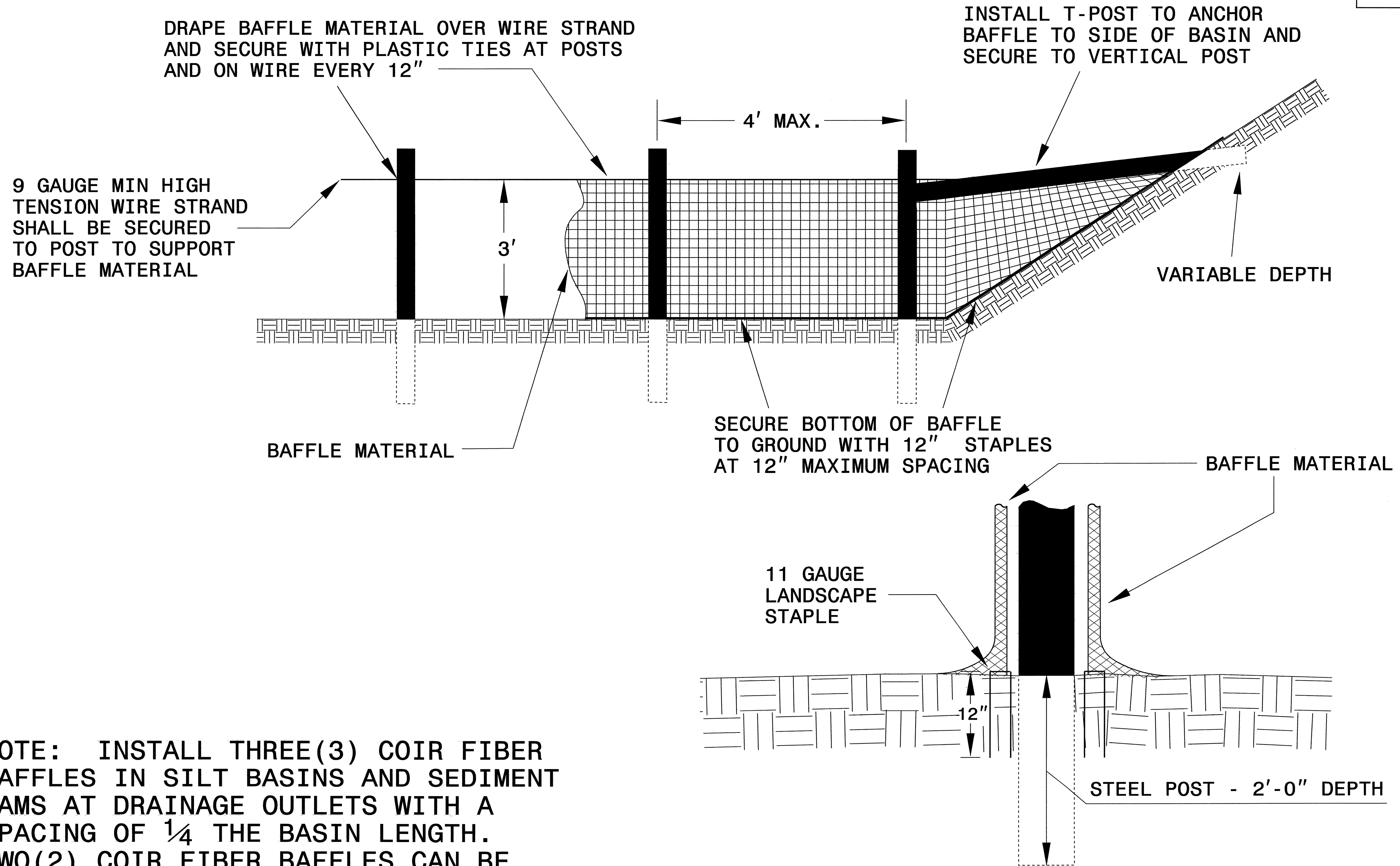


PROJECT REFERENCE NO. B-2965	SHEET NO. EC-2
RW SHEET NO.	
ROADWAY DESIGN ENGINEER	HYDRAULICS ENGINEER

COIR FIBER BAFFLE DETAIL

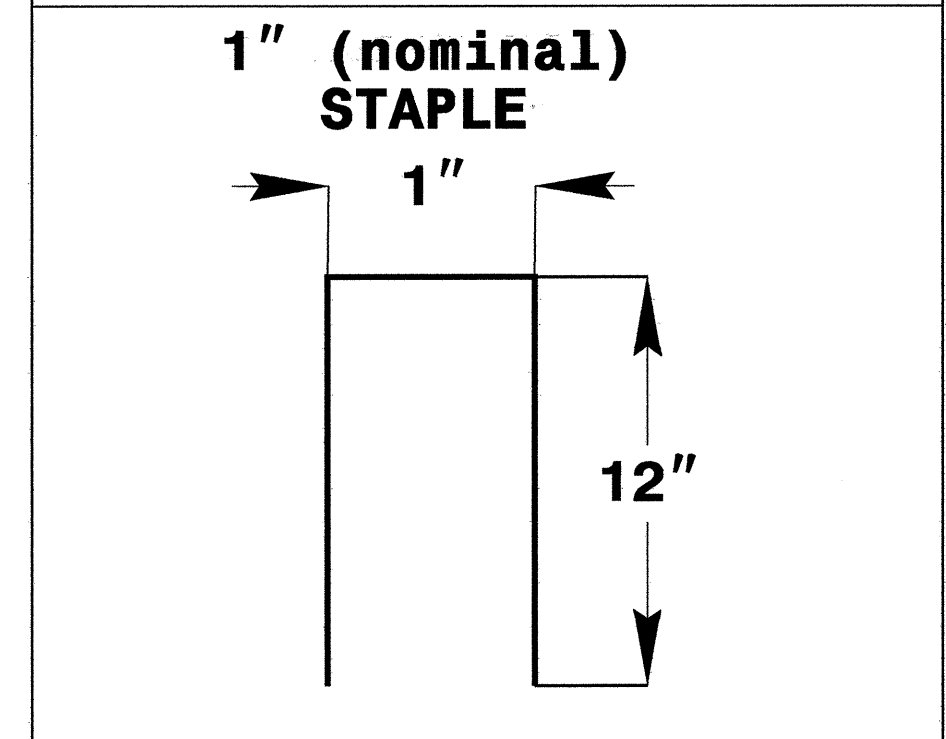
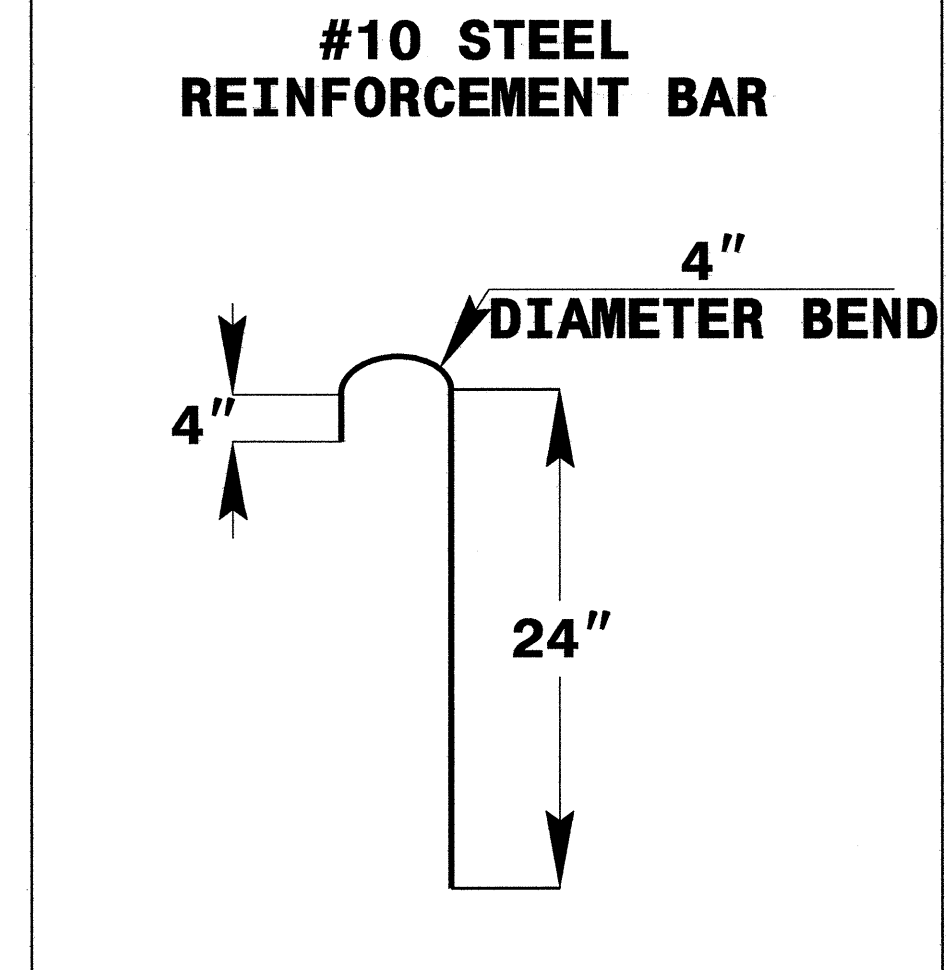
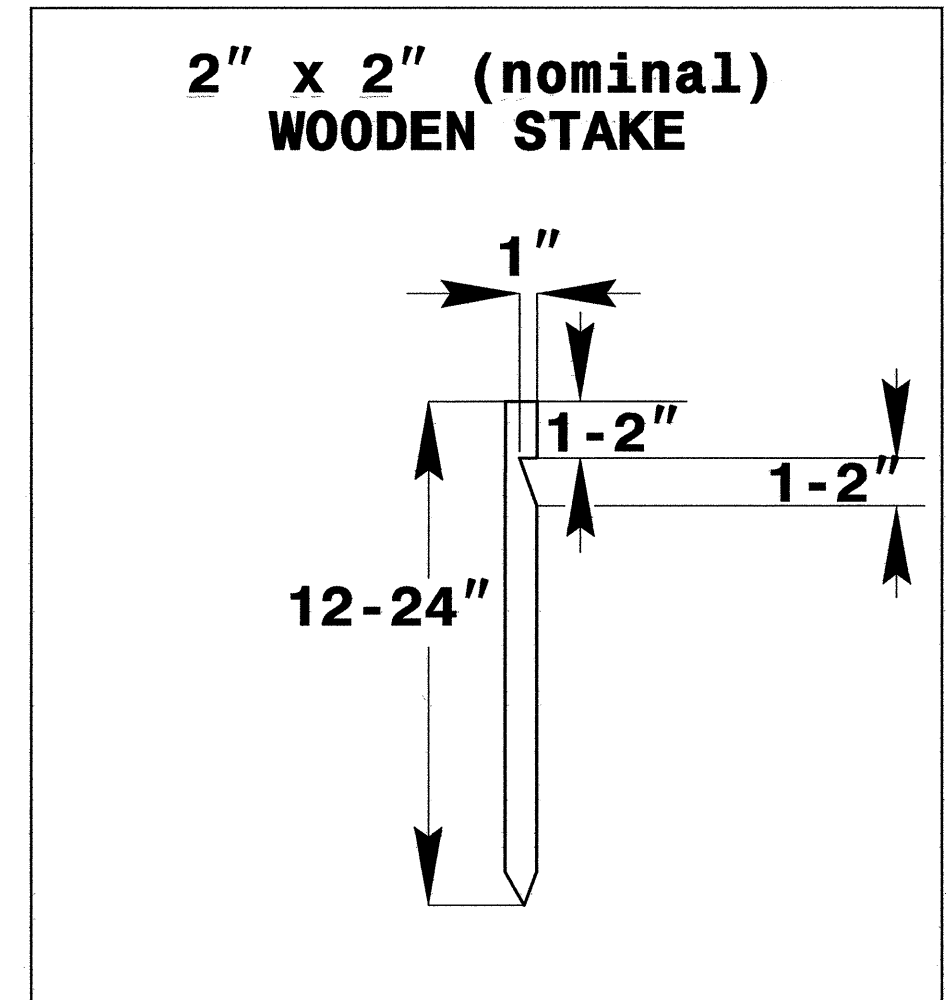
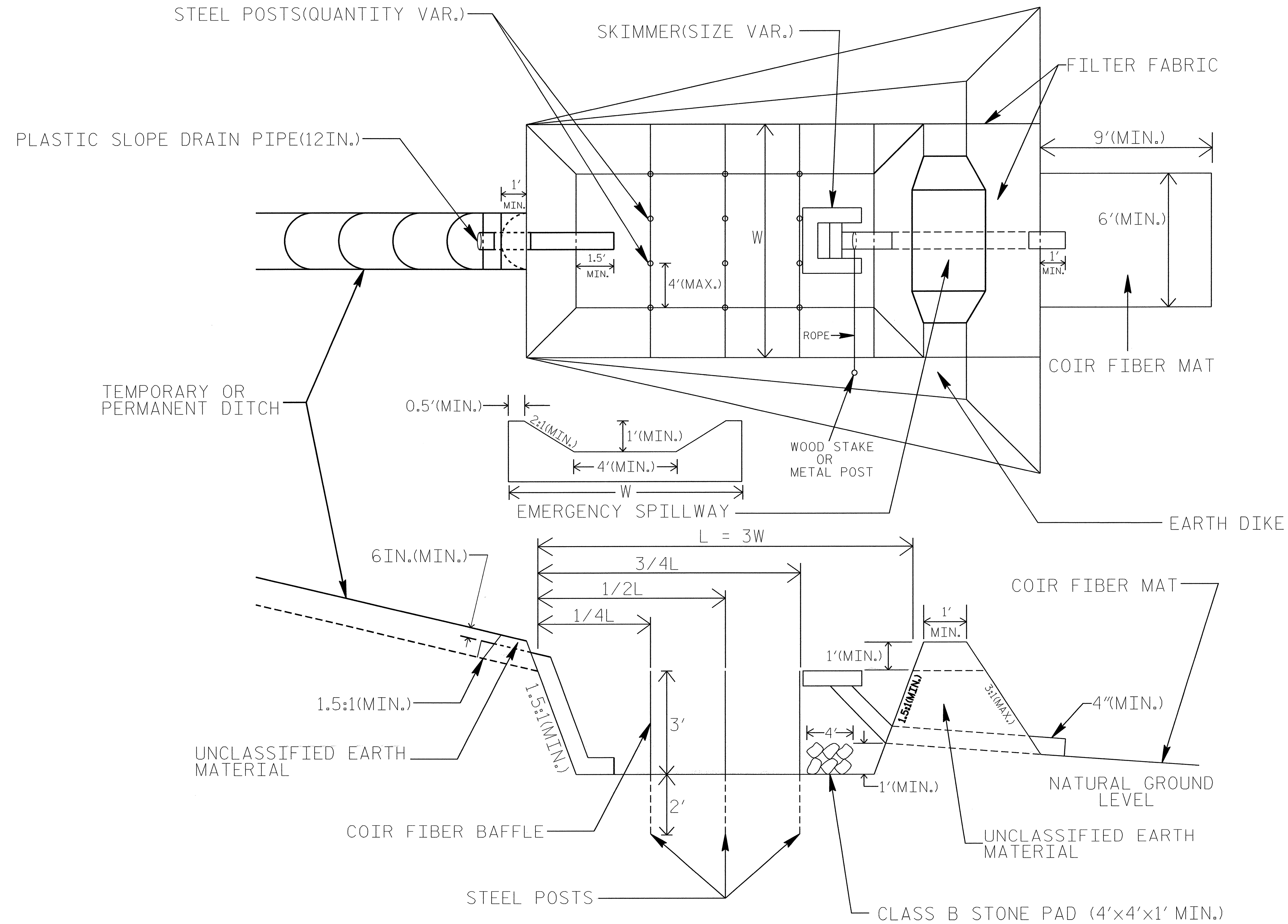


NOTE: INSTALL THREE (3) COIR FIBER BAFFLES IN SILT BASINS AND SEDIMENT DAMS AT DRAINAGE OUTLETS WITH A SPACING OF $\frac{1}{4}$ THE BASIN LENGTH. TWO (2) COIR FIBER BAFFLES CAN BE INSTALLED IN SILT BASINS AND DAMS LESS THAN 20 FT. IN LENGTH WITH A SPACING OF $\frac{1}{3}$ THE BASIN LENGTH.

BAFFLE MATERIAL SHALL BE SECURED TO THE BOTTOM AND SIDES OF BASIN USING 12" LANDSCAPE STAPLES

SKIMMER BASIN WITH BAFFLES DETAIL

PROJECT REFERENCE NO. B-2965	SHEET NO. EC-2A
RW SHEET NO.	
ROADWAY DESIGN ENGINEER	HYDRAULICS ENGINEER



COIR FIBER MAT ANCHOR OPTIONS

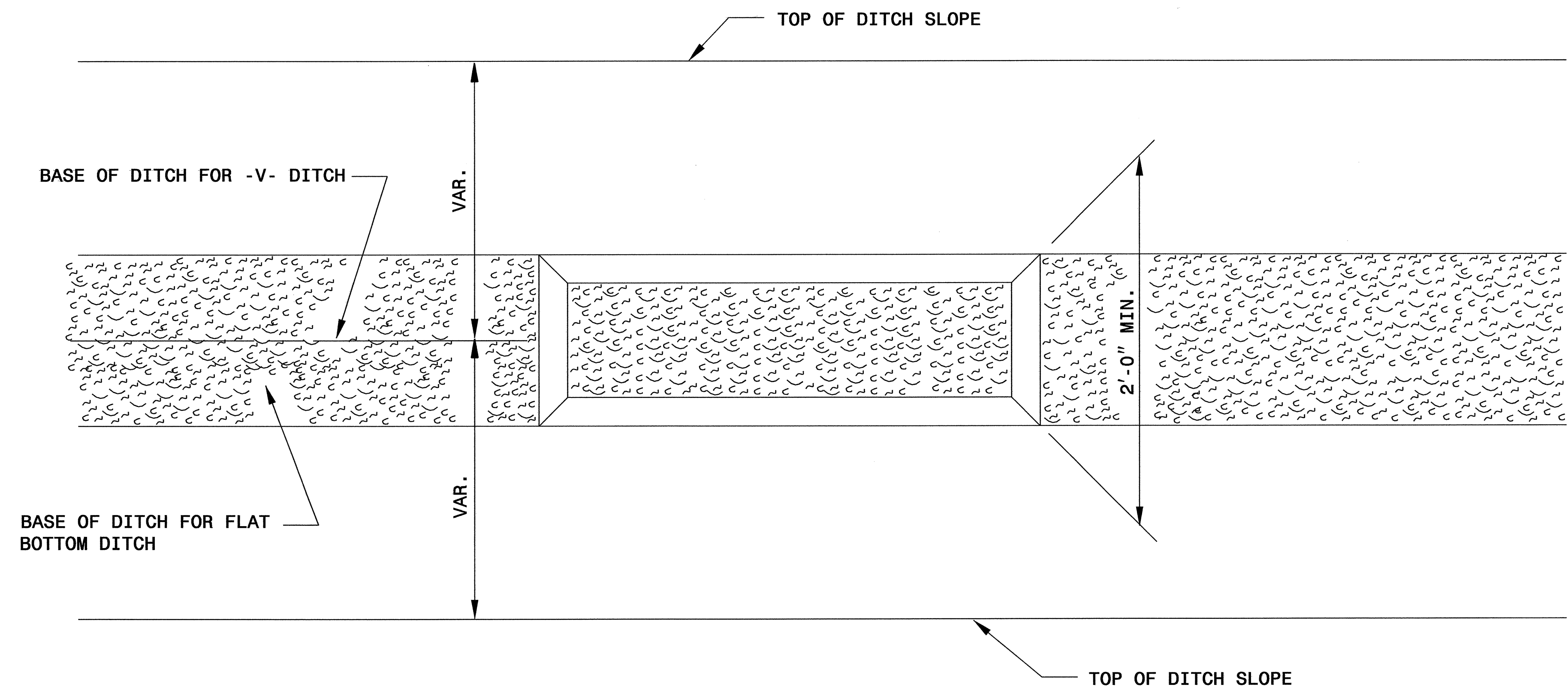
NOTES

1. SEED AND PLACE MATTING FOR EROSION CONTROL ON INTERIOR SIDESLOPES.
2. LIMIT EARTH DIKE HEIGHT TO 5 FT.
3. THE MINIMUM BASIN WIDTH SHALL BE 9 FT.
4. DETERMINE EMERGENCY SPILLWAY LENGTH (FT.) USING $Q/0.8$, WHERE Q IS FLOW RATE (CFS) INTO BASIN.

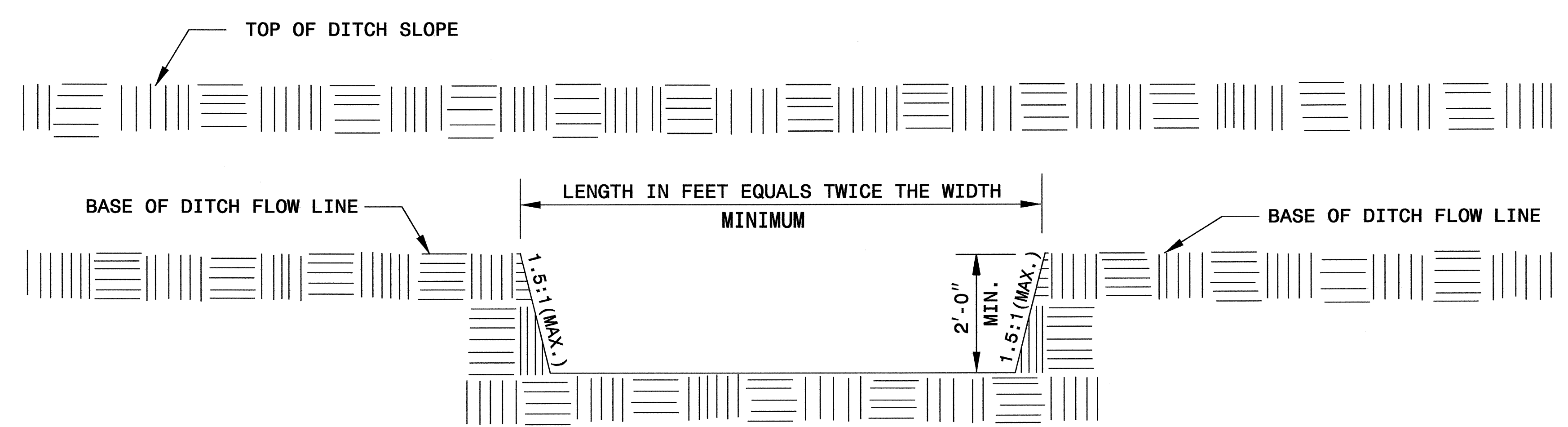
NOT TO SCALE

PROJECT REFERENCE NO. <i>B-2965</i>	SHEET NO. <i>EC-2B</i>
RW SHEET NO.	
ROADWAY DESIGN ENGINEER	HYDRAULICS ENGINEER

SILT BASIN 'B' DETAIL



PLAN



ELEVATION

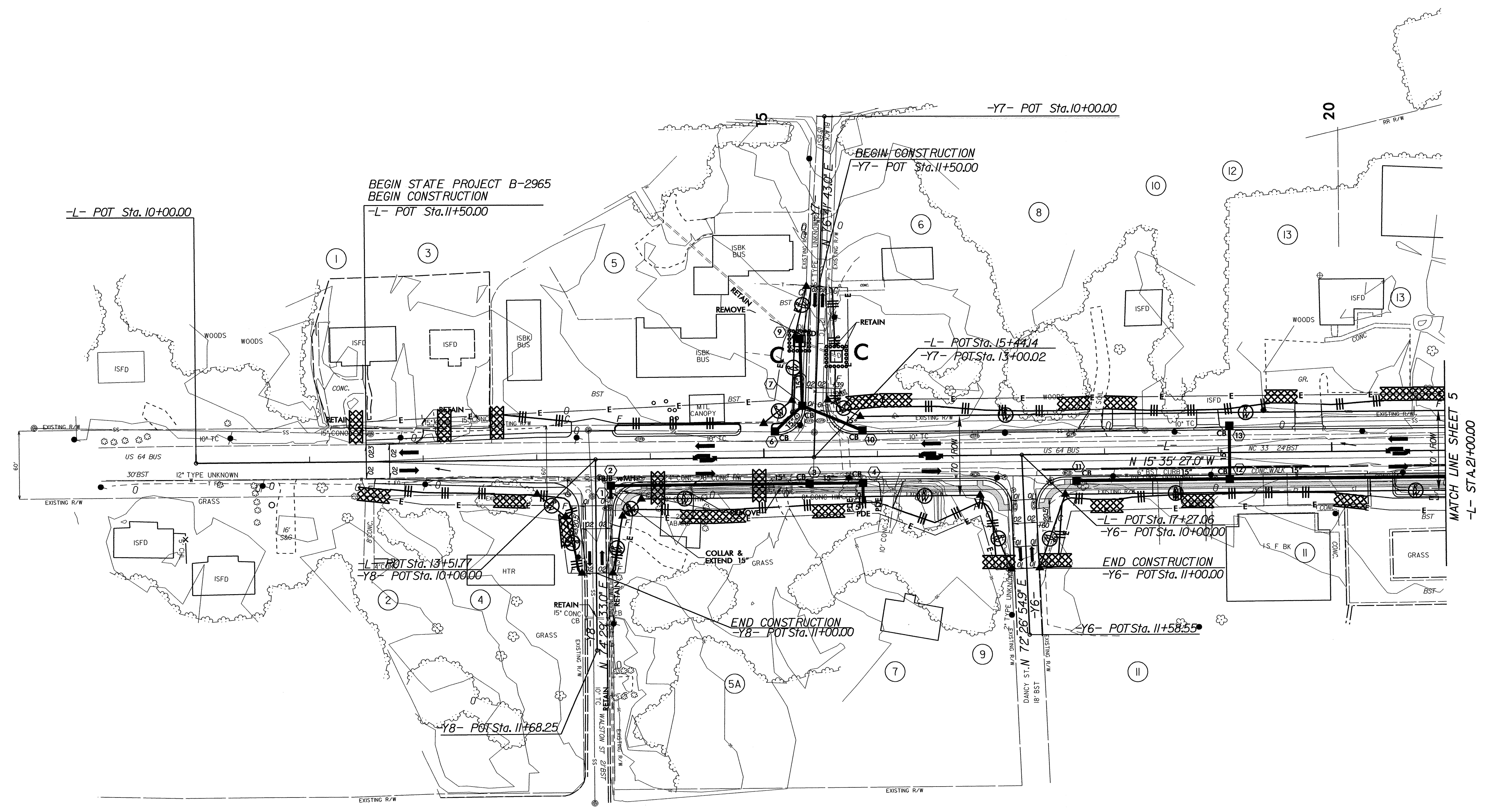
PROJECT REFERENCE NO. B-2965	SHEET NO. EC-3/CONST.4
RW SHEET NO.	
ROADWAY DESIGN ENGINEER	HYDRAULICS ENGINEER

CLEARING AND GRUBBING
EROSION CONTROL FOR
CONSTRUCTION SHEET 4

NOTE:
PLACE TEMPORARY ROCK SEDIMENT DAMS TYPE - B
AND TEMPORARY ROCK SILT CHECKS TYPE - A AT
DRAINAGE OUTLETS.



FOR -L- PROFILE SEE SHEET 8
FOR -Y6- PROFILE SEE SHEET 11
FOR -Y7- PROFILE SEE SHEET 11
FOR -Y8- PROFILE SEE SHEET 11



8/17/99
 02-SEP-2008 14:44
 91:\tippr\o\ec\ec-3-b\2965\environmental\design\b2965_ec_psh04.dgn
 richard AT PENN231812

PROJECT REFERENCE NO. B-2965	SHEET NO. EC-4/CONST.5
RW SHEET NO.	
ROADWAY DESIGN ENGINEER	HYDRAULICS ENGINEER

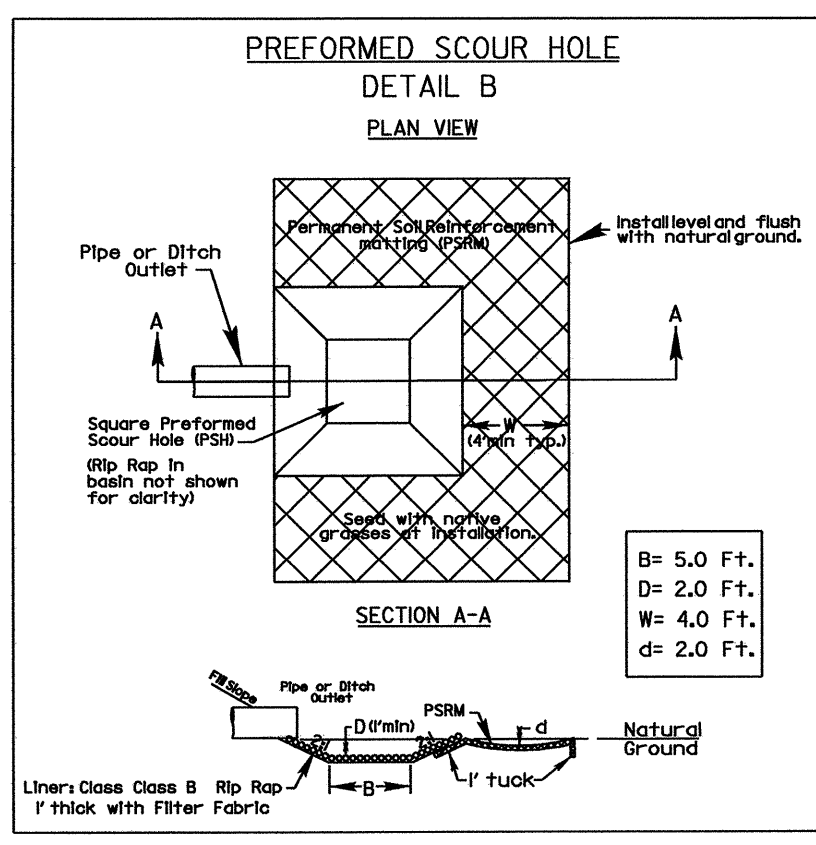
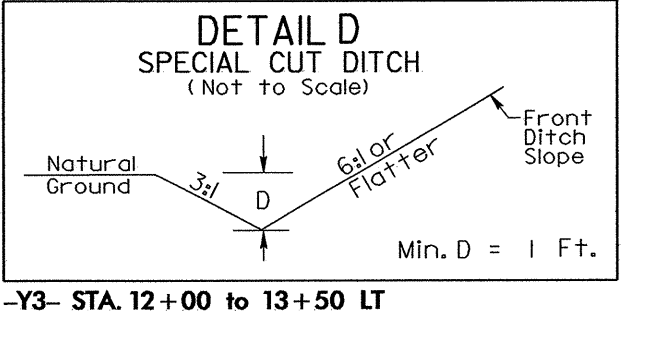
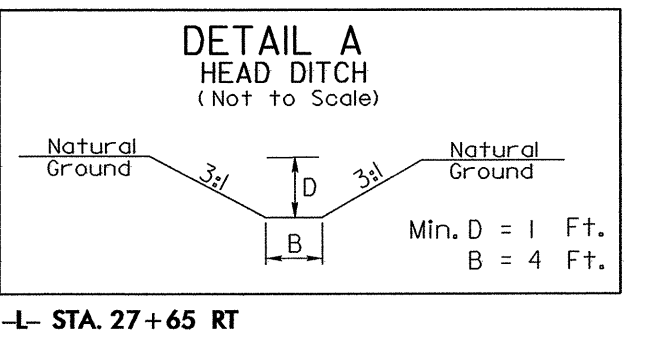
CLEARING AND GRUBBING
EROSION CONTROL FOR
CONSTRUCTION SHEET 5

NOTE:
PLACE TEMPORARY ROCK SEDIMENT DAMS TYPE - B
AND TEMPORARY ROCK SILT CHECKS TYPE - A AT
DRAINAGE OUTLETS.

FOR -L- PROFILE SEE SHEET 8
FOR -Y3- PROFILE SEE SHEET 10
FOR -Y4- PROFILE SEE SHEET 10

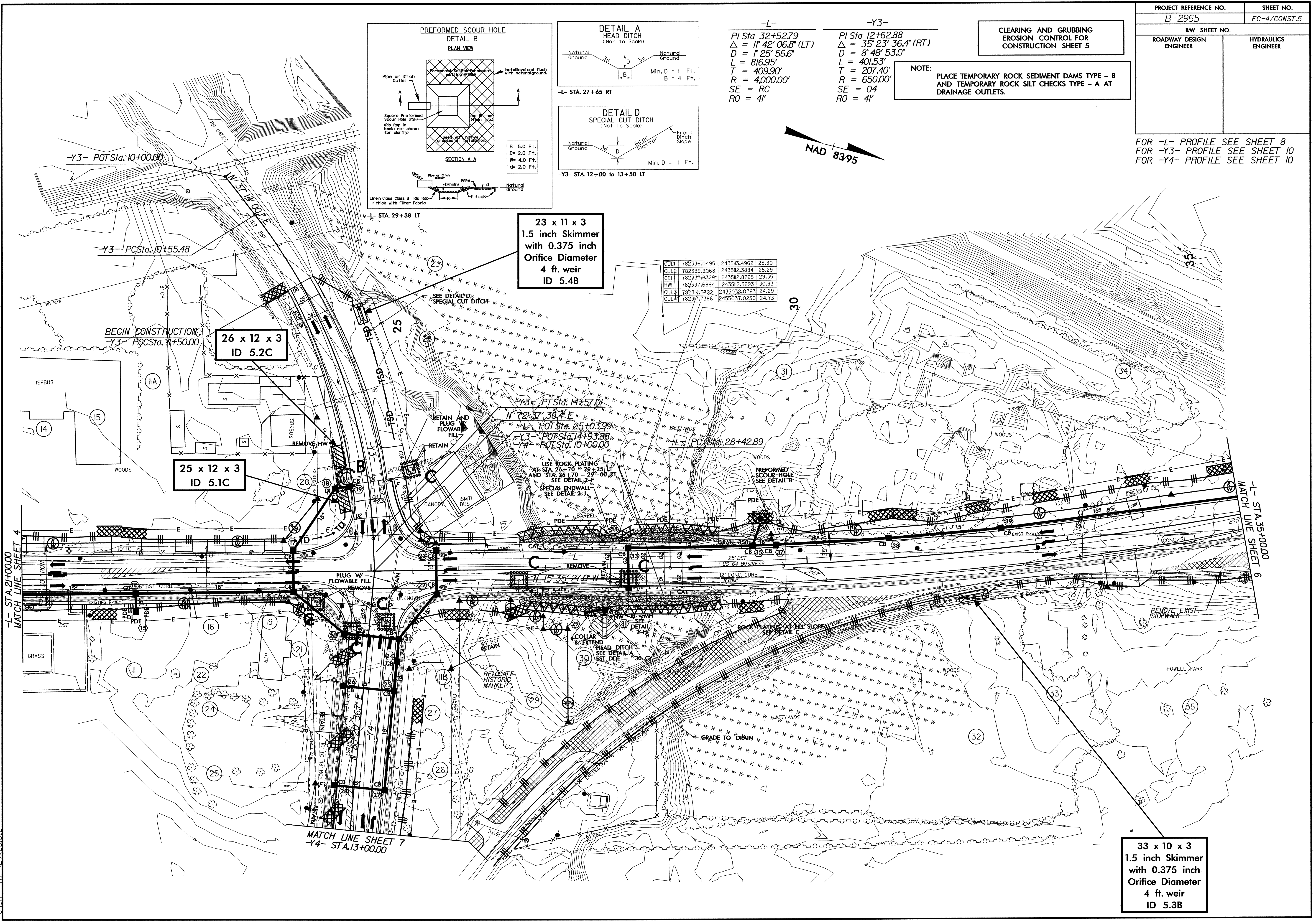
-L-
PI Sta 32+52.79
 $\Delta = 11' 42" 06.8" (LT)$
D = 1' 25' 56.6"
L = 816.95'
T = 409.90'
R = 4,000.00'
SE = RC
RO = 4'

-Y3-
PI Sta 12+62.88
 $\Delta = 35' 23" 36.4" (RT)$
D = 8' 48' 53.0"
L = 401.53'
T = 207.40'
R = 650.00'
SE = 04
RO = 4'



CUL1	782336.0495	243503.4962	25.30
CUL2	782339.9068	243502.3884	25.29
CE1	782337.8329	243502.8765	23.35
HWI	782337.6994	243502.5993	30.93
CUL3	782314.5332	243503.0163	24.69
CUL4	782317.1386	243503.10250	24.73

8/17/99
02-SEP-2008 14:45
g:\tippro\ec-4\B-2965\environmental\design\b2965_ec_psh05.dgn
richard



23 x 11 x 3
1.5 inch Skimmer
with 0.375 inch
Orifice Diameter
4 ft. weir
ID 5.4B

26 x 12 x 3
ID 5.2C

25 x 12 x 3
ID 5.1C

33 x 10 x 3
1.5 inch Skimmer
with 0.375 inch
Orifice Diameter
4 ft. weir
ID 5.3B



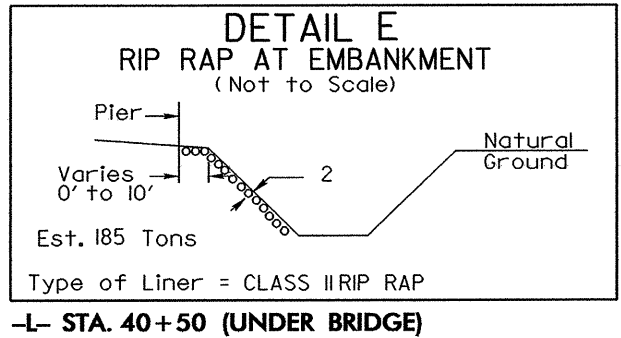
PROJECT REFERENCE NO. B-2965	SHEET NO. EC-5/CONST.6
RW SHEET NO.	
ROADWAY DESIGN ENGINEER	HYDRAULICS ENGINEER

FOR -L-, -R- ROUNDABOUT DETAIL SEE DETAIL SHEET 2-E
 FOR -L- PROFILE SEE SHEET 9
 FOR -Y1- PROFILE SEE SHEET 10
 FOR -Y2- PROFILE SEE SHEET 10
 FOR -R- PROFILE SEE SHEET 9
 FOR -DRIVE- PROFILE SEE SHEET 9

CLEARING AND GRUBBING
 EROSION CONTROL FOR
 CONSTRUCTION SHEET 6

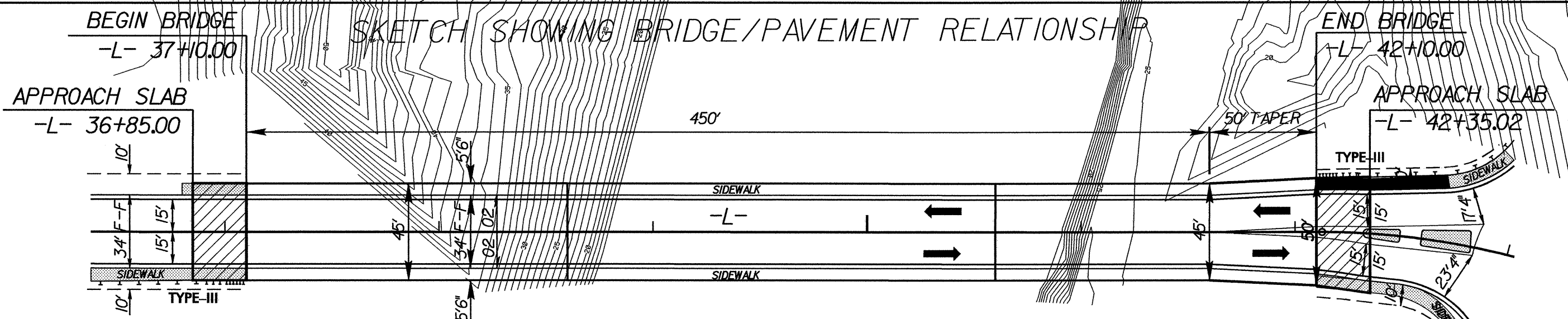
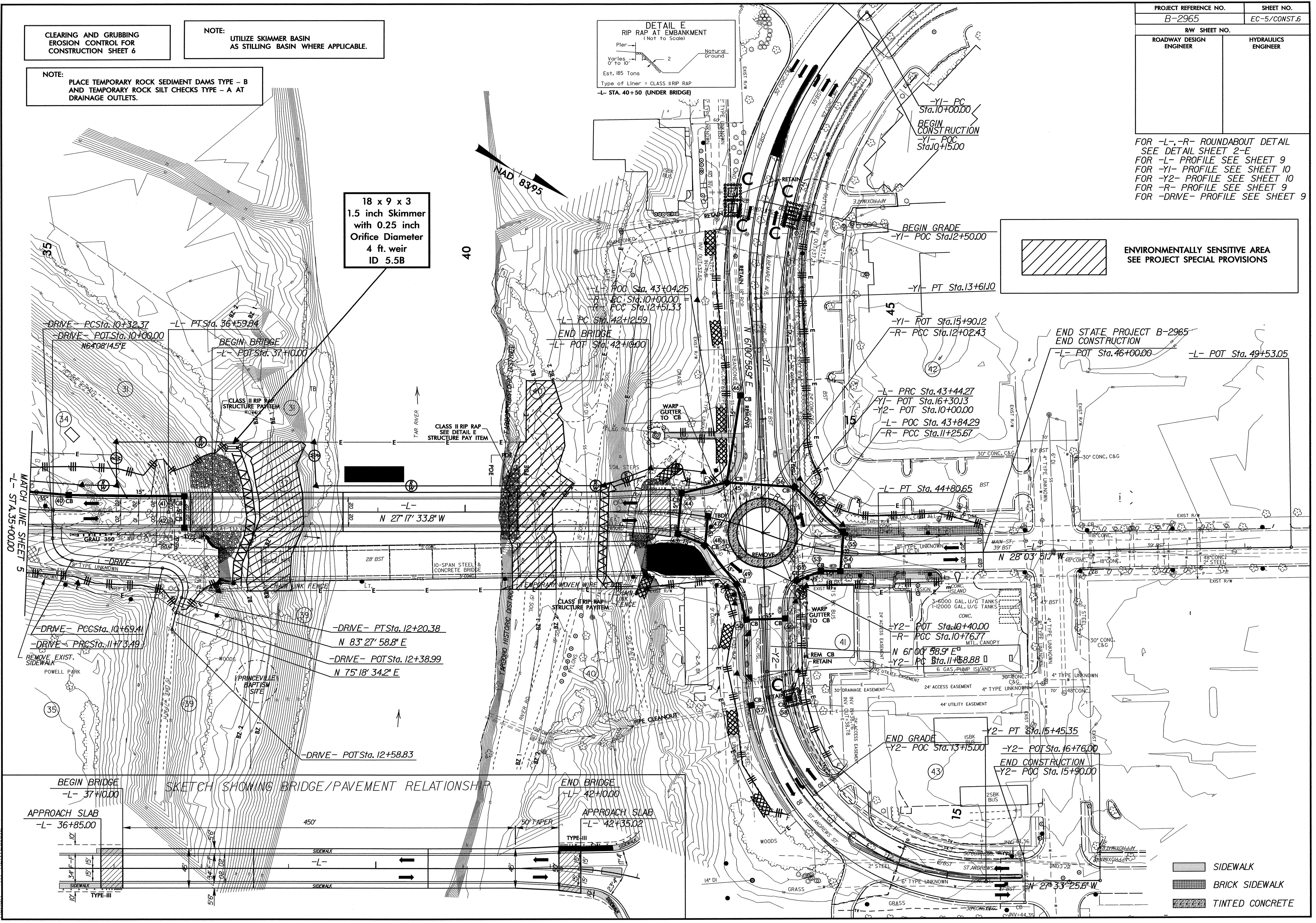
NOTE:
 UTILIZE SKIMMER BASIN
 AS STILLING BASIN WHERE APPLICABLE.

NOTE:
 PLACE TEMPORARY ROCK SEDIMENT DAMS TYPE - B
 AND TEMPORARY ROCK SILT CHECKS TYPE - A AT
 DRAINAGE OUTLETS.



18 x 9 x 3
 1.5 inch Skimmer
 with 0.25 inch
 Orifice Diameter
 4 ft. weir
 ID 5.5B

ENVIRONMENTALLY SENSITIVE AREA
 SEE PROJECT SPECIAL PROVISIONS



- SIDEWALK
- BRICK SIDEWALK
- TINTED CONCRETE

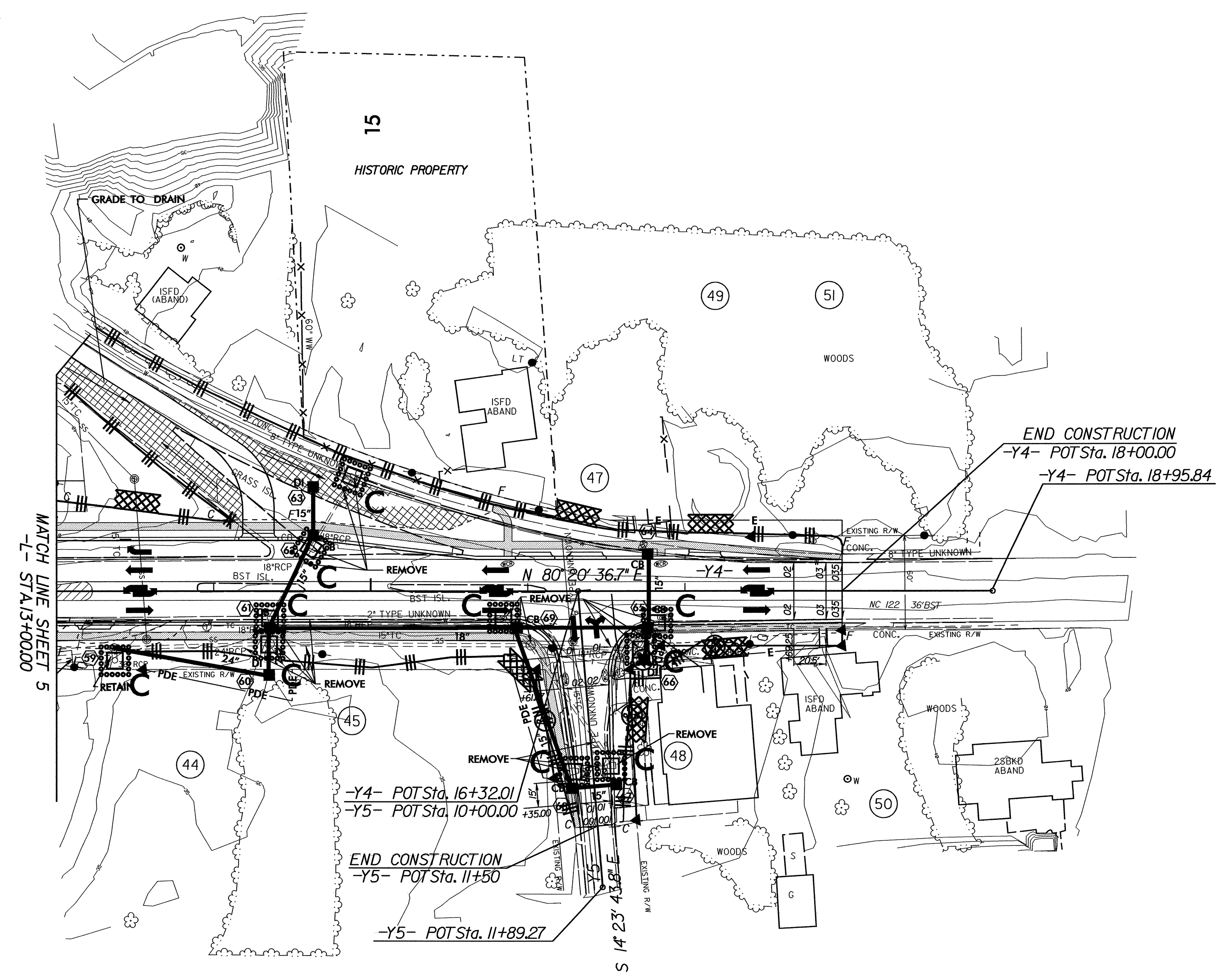
02-SEP-2008 14h5
 9f:\tpr-o\ec\sb-b\2965\environmental\design\b2965_ec_psh06.dgn
 8/17/99
 10
 1
 MATCH LINE SHEET 5
 -L- STA. 35+00.00
 MATCH LINE SHEET 6
 -L- STA. 42+00.00

PROJECT REFERENCE NO. B-2965	SHEET NO. EC-6/CONST.7
RW SHEET NO.	
ROADWAY DESIGN ENGINEER	HYDRAULICS ENGINEER

FOR -Y4- PROFILE SEE SHEET 10
FOR -Y5- PROFILE SEE SHEET 11

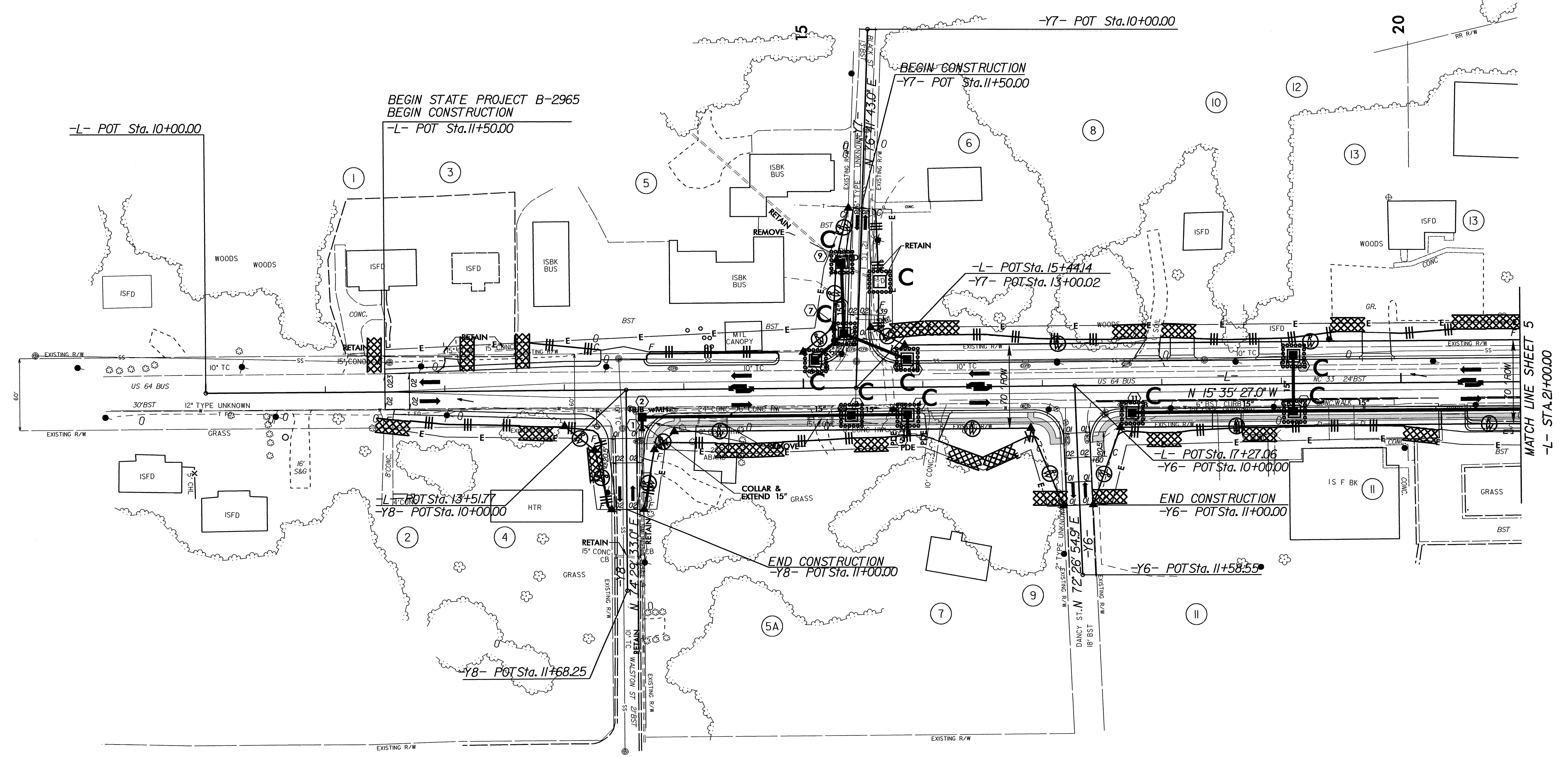
CLEARING AND GRUBBING
EROSION CONTROL FOR
CONSTRUCTION SHEET 7

NOTE:
PLACE TEMPORARY ROCK SEDIMENT DAMS TYPE - B
AND TEMPORARY ROCK SILT CHECKS TYPE - A AT
DRAINAGE OUTLETS.



PROJECT REFERENCE NO. B-2965	SHEET NO. EC-7/CONST.4
R/W SHEET NO.	
ROADWAY DESIGN ENGINEER	HYDRAULICS ENGINEER

FOR -L- PROFILE SEE SHEET 8
 FOR -Y6- PROFILE SEE SHEET 11
 FOR -Y7- PROFILE SEE SHEET 11
 FOR -Y8- PROFILE SEE SHEET 11

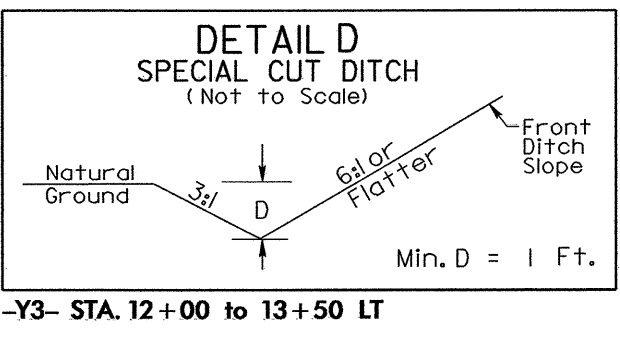
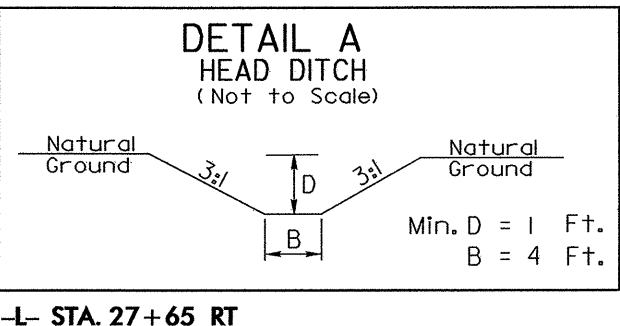
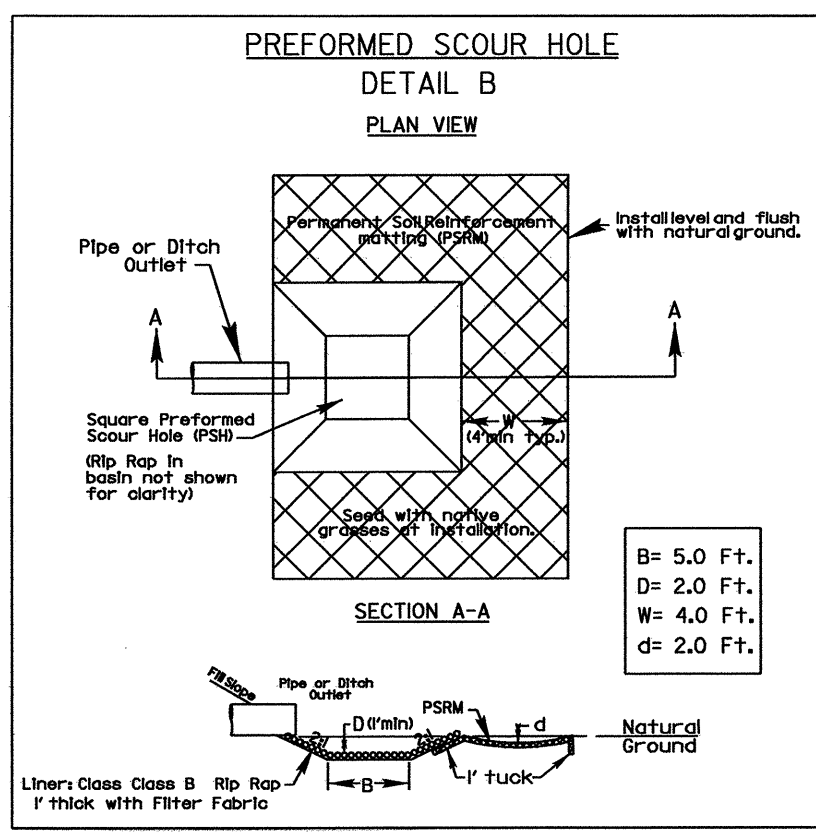


PROJECT REFERENCE NO. B-2965	SHEET NO. EC-8/CONST.5
RW SHEET NO.	
ROADWAY DESIGN ENGINEER	HYDRAULICS ENGINEER

FOR -L- PROFILE SEE SHEET 8
FOR -Y3- PROFILE SEE SHEET 10
FOR -Y4- PROFILE SEE SHEET 10

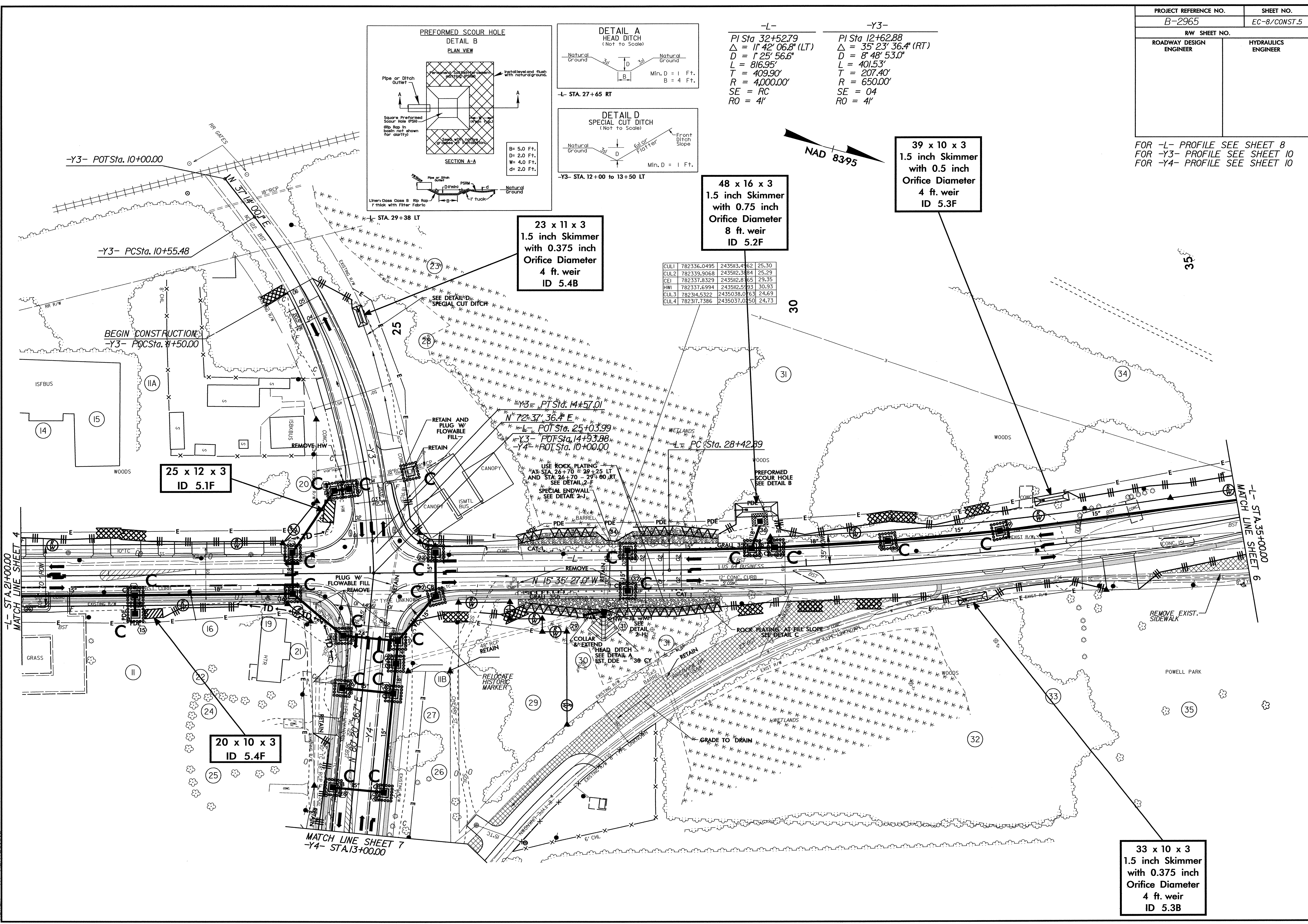
-L-
 PI Sta 32+52.79
 $\Delta = 11' 42" 06.8" (LT)$
 $D = 1' 25" 56.6"$
 $L = 816.95'$
 $T = 409.90'$
 $R = 4,000.00'$
 $SE = RC$
 $RO = 4'$

-Y3-
 PI Sta 12+62.88
 $\Delta = 35' 23" 36.4" (RT)$
 $D = 8' 48" 53.0"$
 $L = 401.53'$
 $T = 207.40'$
 $R = 650.00'$
 $SE = 04$
 $RO = 4'$



CUL1	782336.0495	243511.4462	25.30
CUL2	782339.9068	243512.3484	25.29
CEI	782337.8329	243512.8165	29.35
HWI	782337.6994	243512.5933	30.93
CUL3	782314.5322	2435038.0163	24.69
CUL4	782317.7386	2435037.0150	24.73

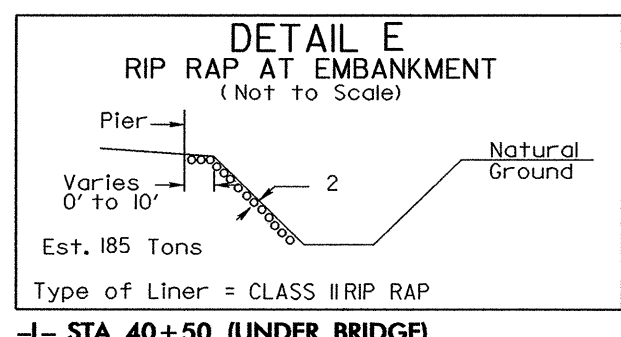
8/17/99
02-SEP-2008 14:15
91:tippr\c\ec-8-b\2965\environmental\design\2965_ec_psh05.dgn
Richard At RNN231812



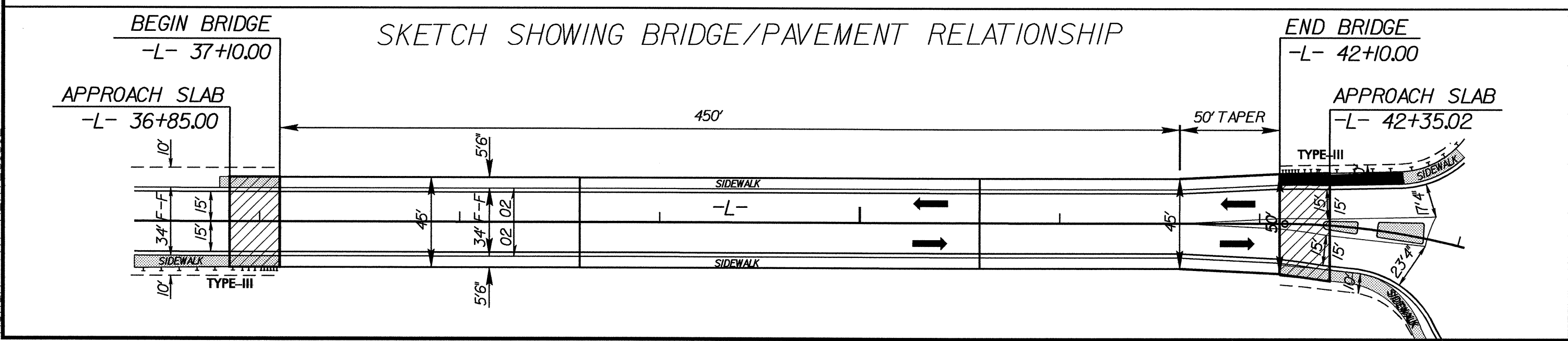
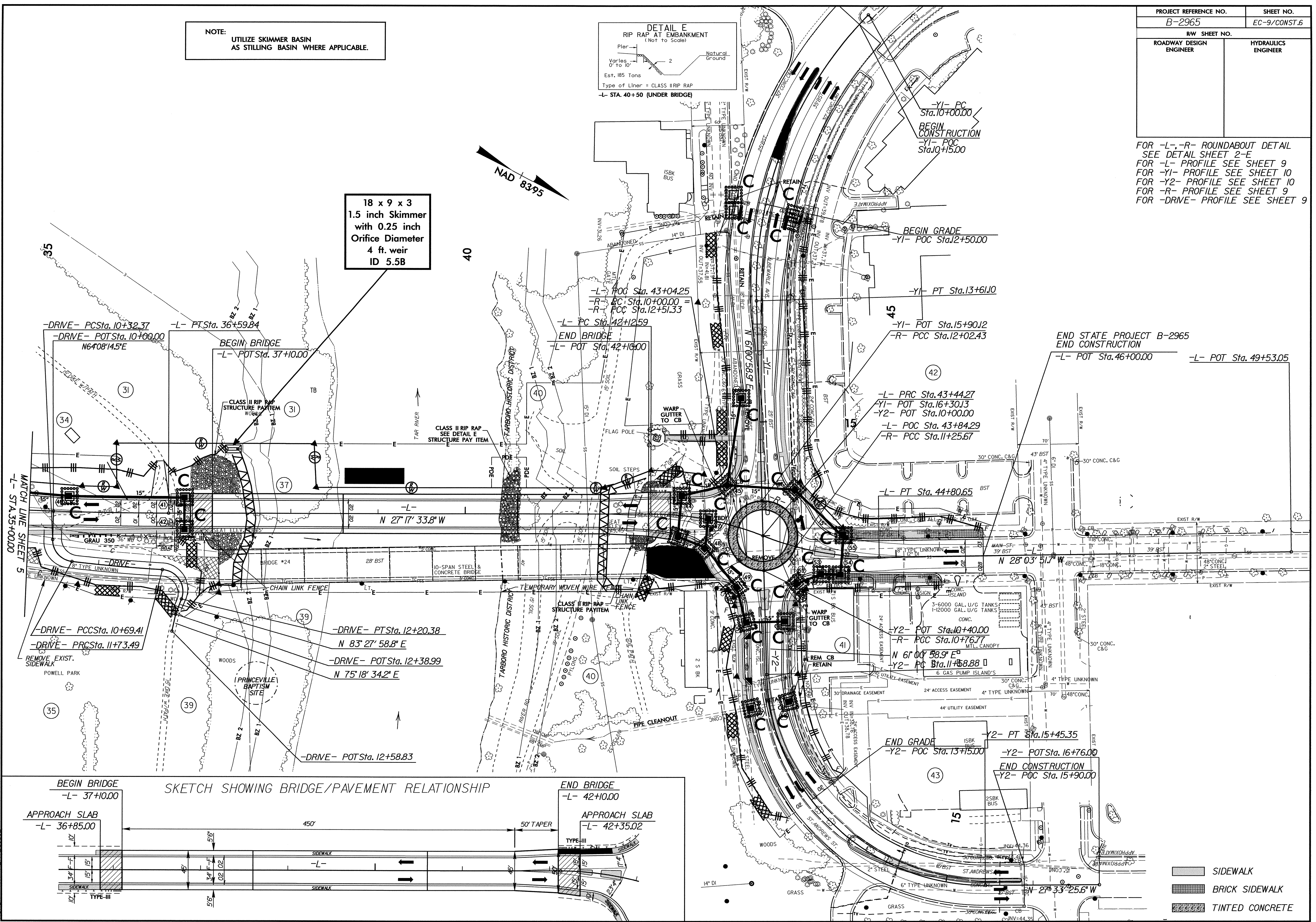
PROJECT REFERENCE NO.	SHEET NO.
B-2965	EC-9/CONST.6
RW SHEET NO.	
ROADWAY DESIGN ENGINEER	HYDRAULICS ENGINEER

FOR -L-, -R- ROUNDABOUT DETAIL SEE DETAIL SHEET 2-E
 FOR -L- PROFILE SEE SHEET 9
 FOR -Y1- PROFILE SEE SHEET 10
 FOR -Y2- PROFILE SEE SHEET 9
 FOR -DRIVE- PROFILE SEE SHEET 9

NOTE:
 UTILIZE SKIMMER BASIN AS STILLING BASIN WHERE APPLICABLE.



18 x 9 x 3
 1.5 inch Skimmer
 with 0.25 inch
 Orifice Diameter
 4 ft. weir
 ID 5.5B



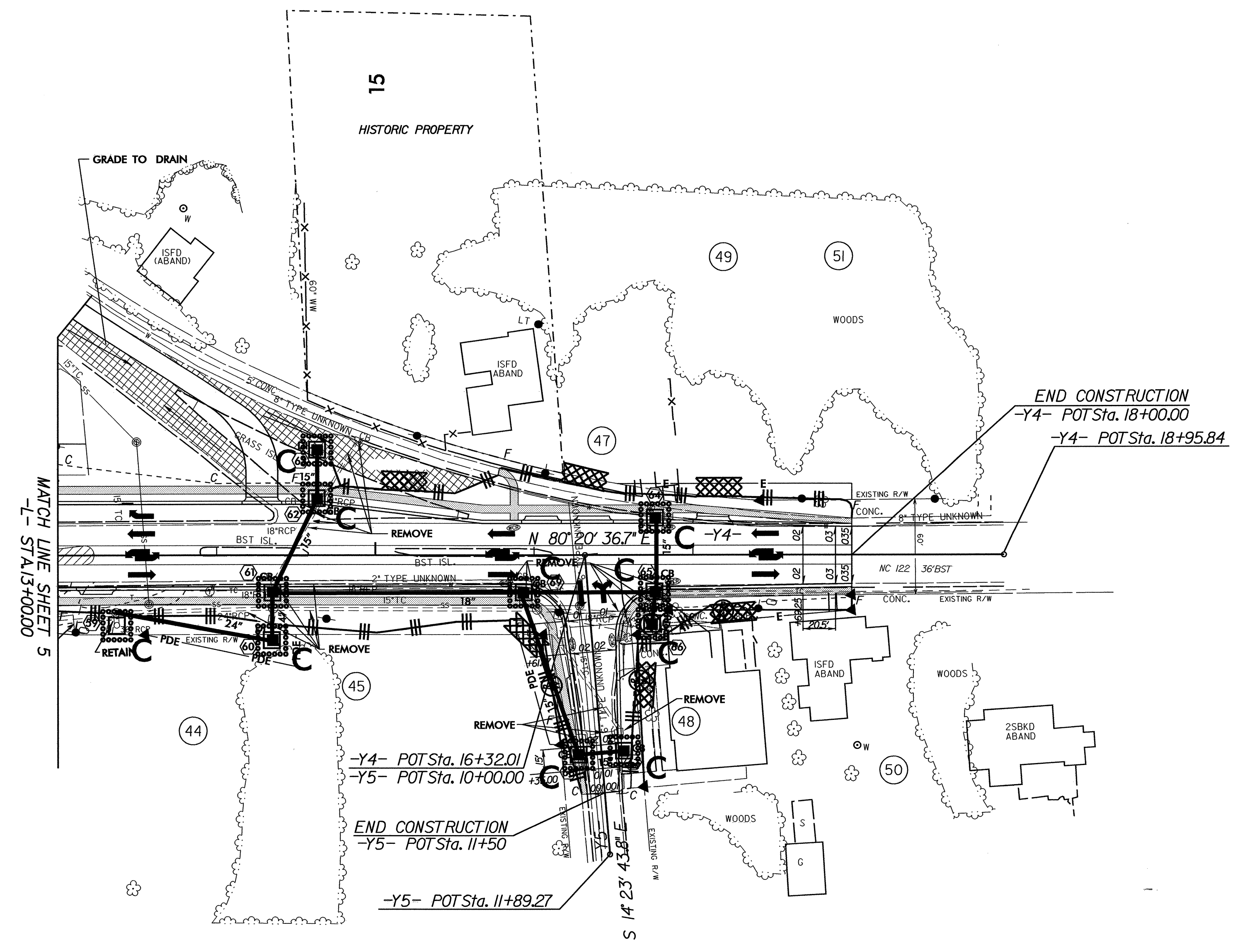
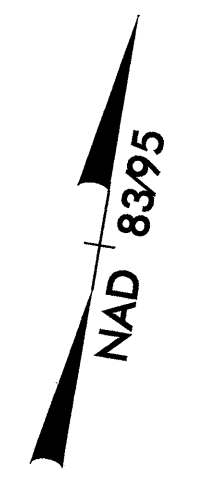
- SIDEWALK
- BRICK SIDEWALK
- TINTED CONCRETE

02-SEP-2008 14:16
 g:\tipp\p\ec\ec-b\2965\environmental\design\b2965_ec_psh06.dgn
 created at 11/23/12

8/17/99

PROJECT REFERENCE NO. B-2965	SHEET NO. EC-10/CONST.7
RW SHEET NO.	
ROADWAY DESIGN ENGINEER	HYDRAULICS ENGINEER

FOR -Y4- PROFILE SEE SHEET 10
FOR -Y5- PROFILE SEE SHEET 11



02-SEP-2008 14:17
 G:\tippro\ec\ss-b\2965\environmental\design\2965_ec_psh07.dgn
 pchao AT PENN231812