

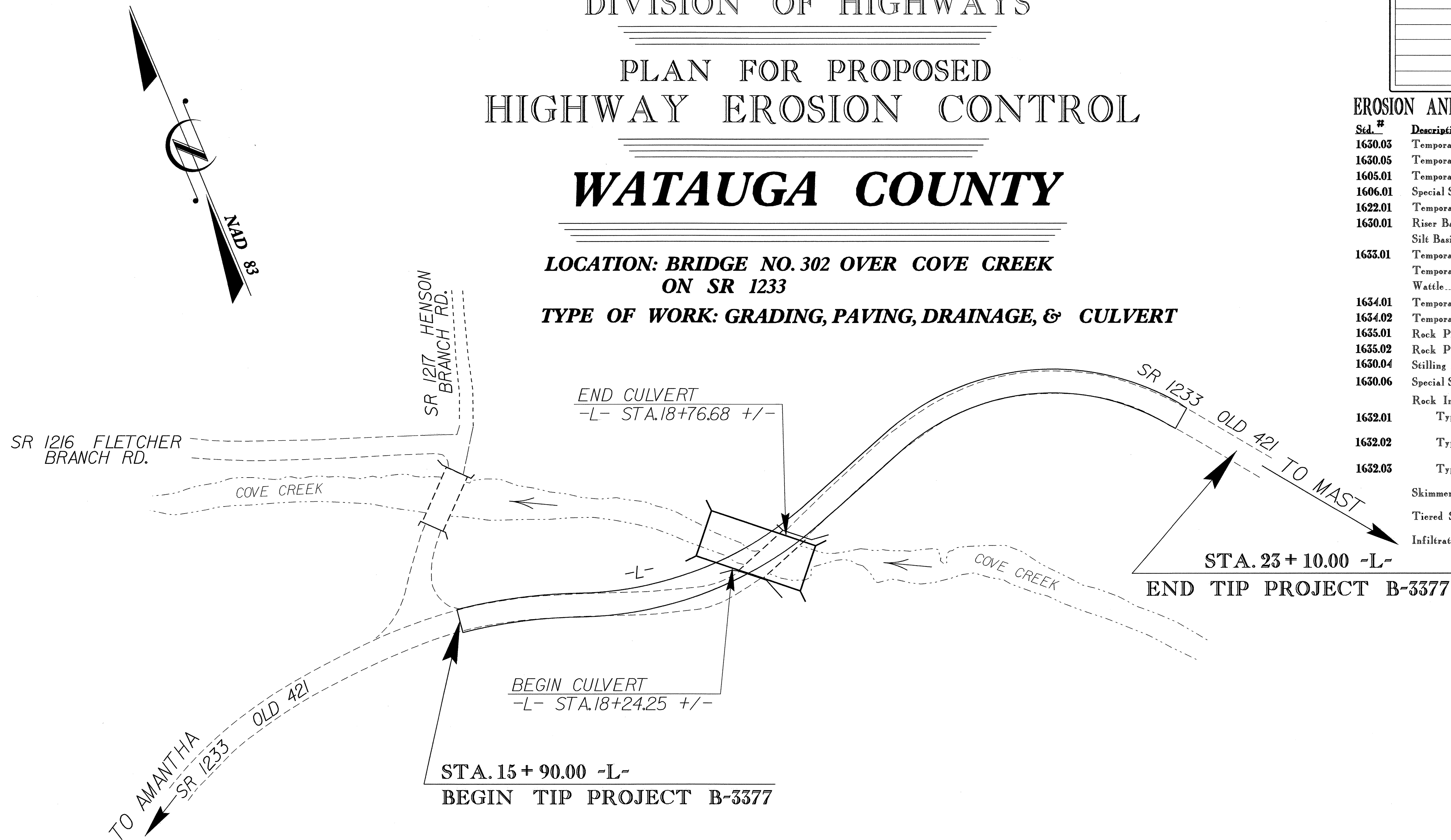
**TIP PROJECT: B-3377**

STATE OF NORTH CAROLINA  
DIVISION OF HIGHWAYS  
PLAN FOR PROPOSED  
HIGHWAY EROSION CONTROL

**WATAUGA COUNTY**

**LOCATION: BRIDGE NO. 302 OVER COVE CREEK  
ON SR 1233**

**TYPE OF WORK: GRADING, PAVING, DRAINAGE, & CULVERT**



STATE	STATE PROJECT REFERENCE NO.	SHEET NO.	TOTAL SHEETS
N.C.	B-3377	EC-1	
STATE PROJ. NO.	F.A. PROJ. NO.	DESCRIPTION	

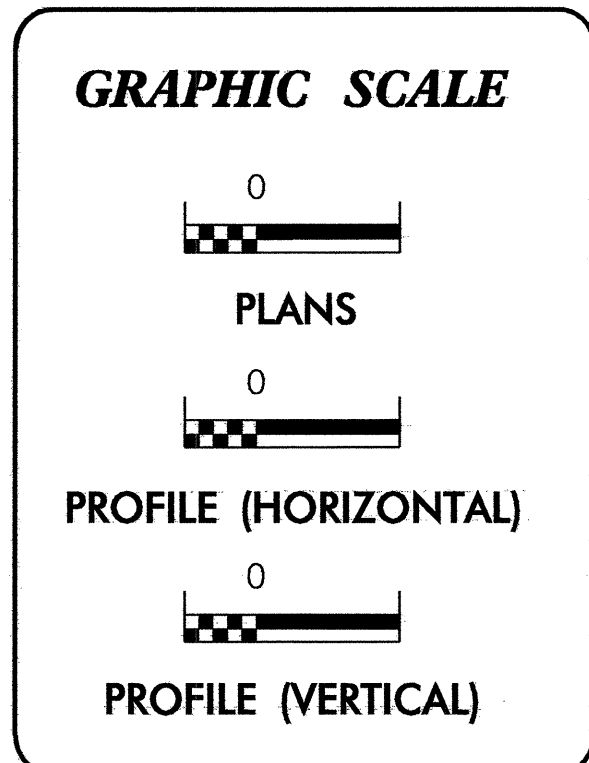
**EROSION AND SEDIMENT CONTROL MEASURES**

Std. #	Description	Symbol
1630.03	Temporary Silt Ditch.....	TD
1630.05	Temporary Diversion.....	TD
1605.01	Temporary Silt Fence.....	III III III
1606.01	Special Sediment Control Fence.....	III III III
1622.01	Temporary Berms and Slope Drains.....	III III III
1630.01	Riser Basin.....	III III III
	Silt Basin Type B.....	III III III
1633.01	Temporary Rock Silt Check Type-A.....	III III III
	Temporary Rock Silt Check Type-B.....	III III III
	Wattle.....	III III III
1634.01	Temporary Rock Sediment Dam Type-A.....	III III III
1634.02	Temporary Rock Sediment Dam Type-B.....	III III III
1635.01	Rock Pipe Inlet Sediment Trap Type-A.....	III III III
1635.02	Rock Pipe Inlet Sediment Trap Type-B.....	III III III
1630.04	Stilling Basin.....	III III III
1630.06	Special Stilling Basin.....	III III III
	Rock Inlet Sediment Trap:	III III III
1632.01	Type A.....	A
1632.02	Type B.....	B
1632.03	Type C.....	C
	Skimmer Basin.....	III III III
	Tiered Skimmer Basin.....	III III III
	Infiltration Basin.....	III III III

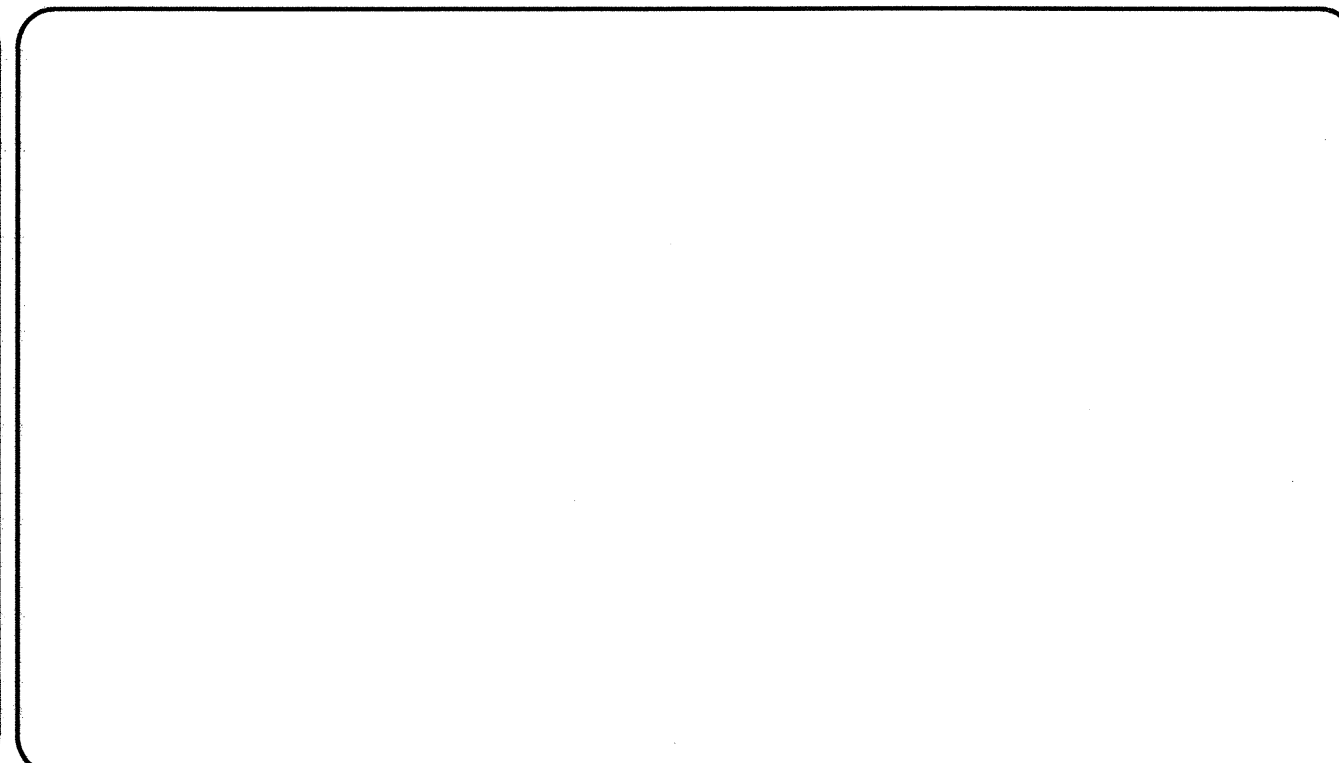
**THIS PROJECT CONTAINS  
EROSION CONTROL PLANS  
FOR CLEARING AND  
GRUBBING PHASE OF  
CONSTRUCTION.**

**ENVIRONMENTALLY  
SENSITIVE AREA(S) EXIST  
ON THIS PROJECT**  
*Refer To E. C. Special Provisions  
for Special Considerations.*

**THIS PROJECT HAS  
BEEN DESIGNED TO  
SENSITIVE WATERSHED  
STANDARDS.**



ROADSIDE ENVIRONMENTAL UNIT  
DIVISION OF HIGHWAYS  
STATE OF NORTH CAROLINA



Prepared In the Office of:  
**ROADSIDE ENVIRONMENTAL UNIT**  
1 South Wilmington St.  
Raleigh, NC 27611  
**2006 STANDARD SPECIFICATIONS**

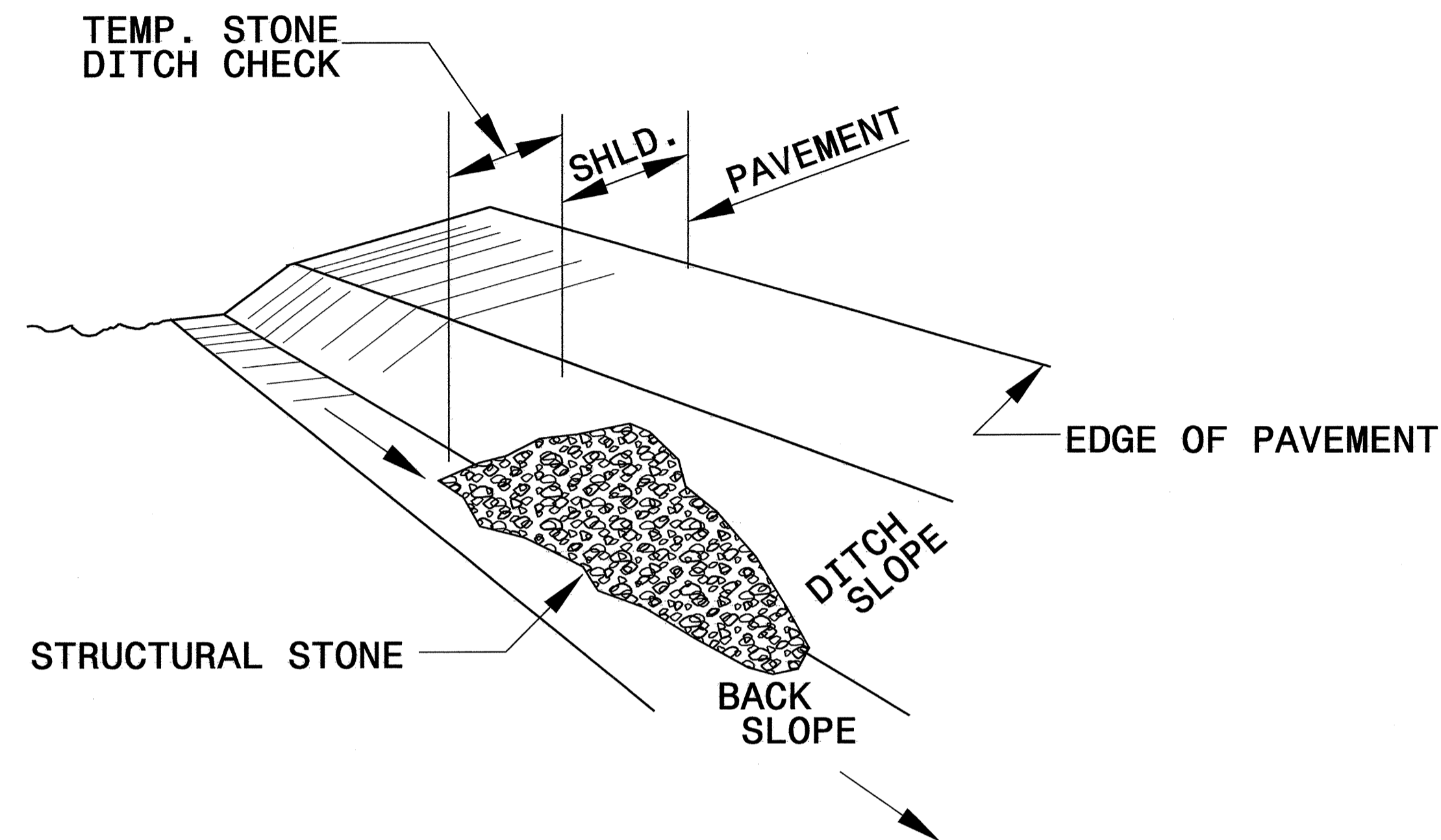
Roadway Standard Drawings

The following roadway english standards as appear in "Roadway Standard Drawings"- Roadway Design Unit - N. C. Department of Transportation - Raleigh, N. C., dated July 18, 2006 and the latest revision thereto are applicable to this project and by reference hereby are considered a part of these plans.

1605.01 Temporary Silt Fence	1630.05 Temporary Diversion
1606.01 Special Sediment Control Fence	1630.06 Special Stilling Basin
1607.01 Gravel Construction Entrance	1632.03 Rock Inlet Sediment Trap Type C
1622.01 Temporary Berms and Slope Drains	1633.01 Temporary Rock Silt Check Type A
1630.03 Temporary Silt Ditch	1635.02 Rock Pipe Inlet Sediment Trap Type B

PROJECT REFERENCE NO. B-3377	SHEET NO. EC-2
RW SHEET NO.	
ROADWAY DESIGN ENGINEER	HYDRAULICS ENGINEER

# TEMPORARY ROCK SILT CHECK TYPE 'B' DETAIL

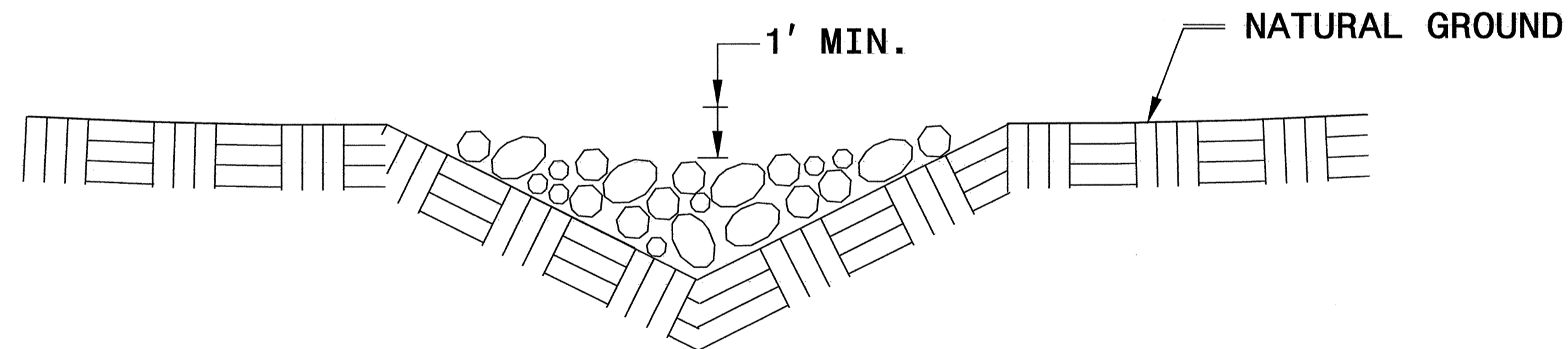


**ISOMETRIC VIEW**

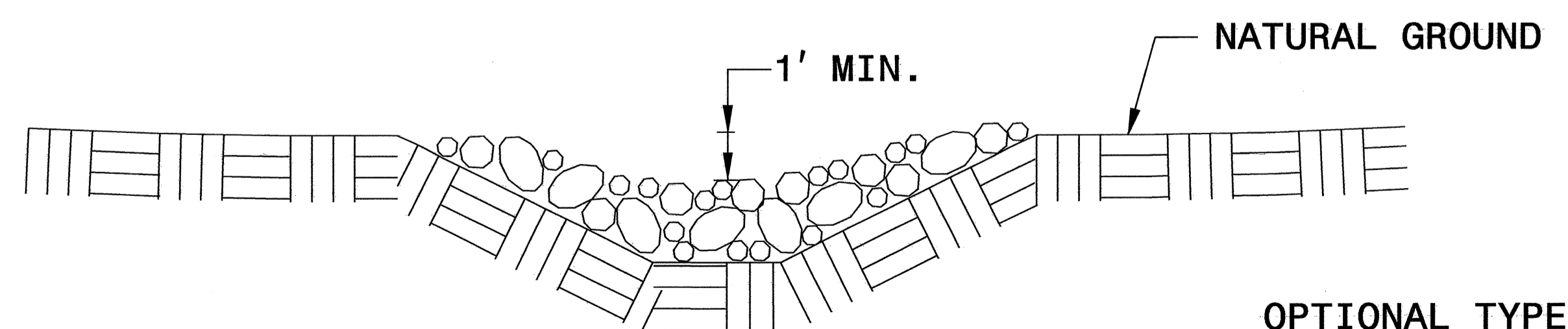
**NOTES:**

USE CLASS 'B' EROSION CONTROL STONE FOR STRUCTURAL STONE.

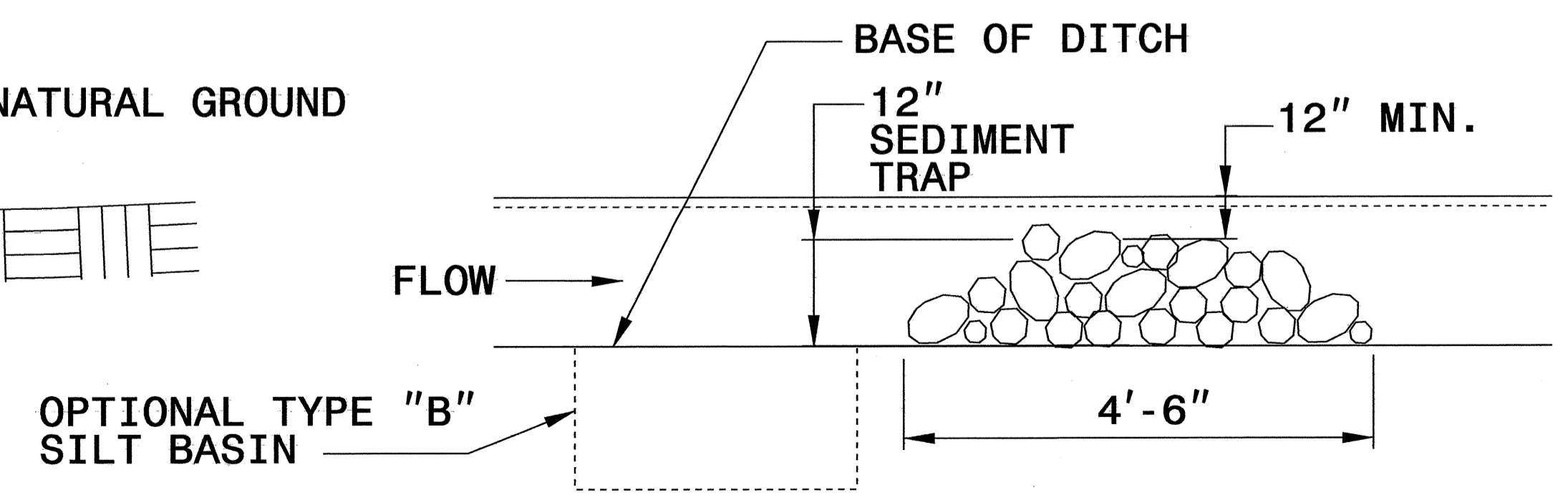
THE ENGINEER MAY DIRECT THE OPTION OF CLASS "A" STONE FOR SITES HAVING LESS THAN ONE (1) ACRE DRAINAGE AREA AND A DITCH GRADE LESS THAN 3%.



**CROSS SECTION VEE DITCH**



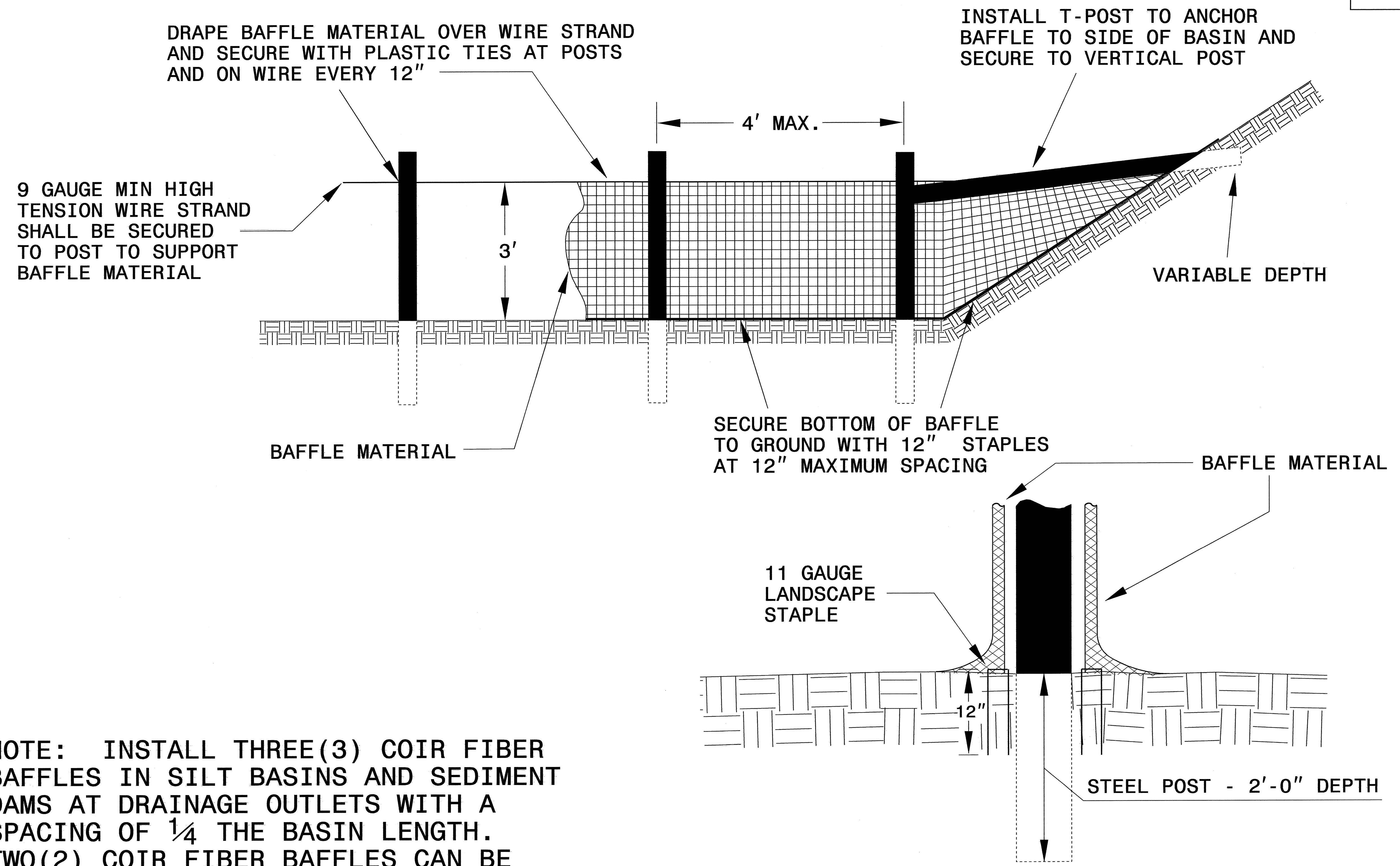
**CROSS SECTION TRAPEZOIDAL DITCH**



**ELEVATION VIEW**

PROJECT REFERENCE NO. B-3377	SHEET NO. EC-2A
RW SHEET NO.	
ROADWAY DESIGN ENGINEER	HYDRAULICS ENGINEER

# COIR FIBER BAFFLE DETAIL

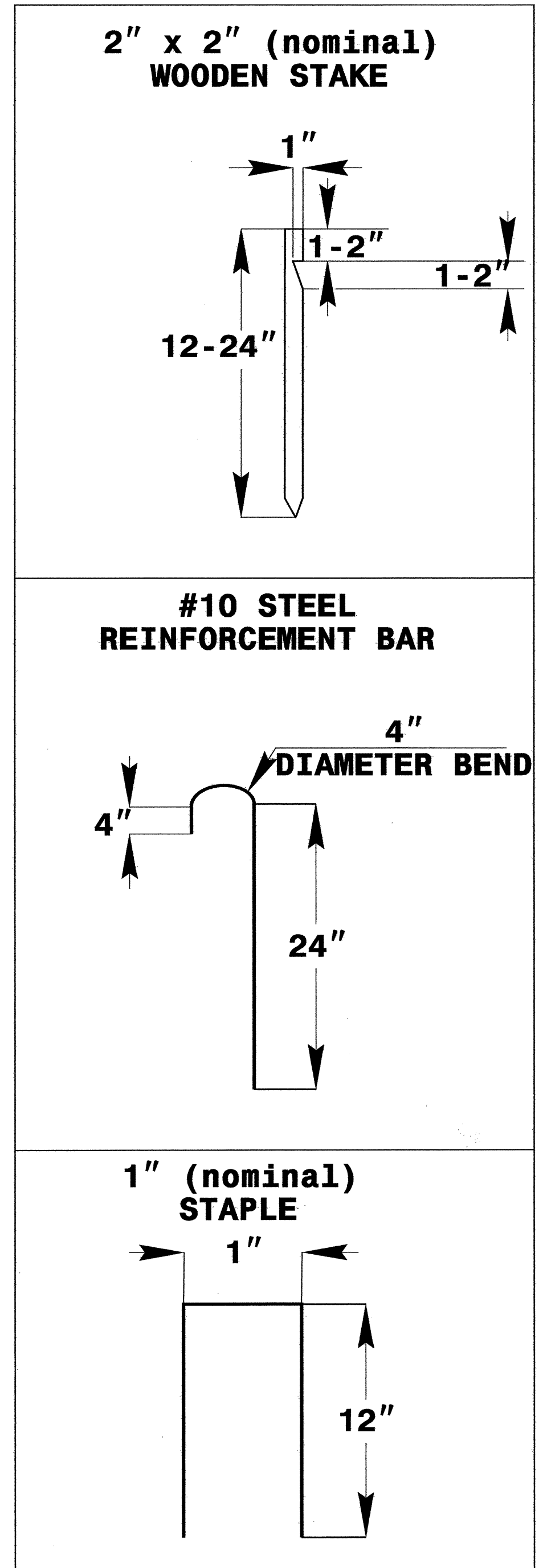
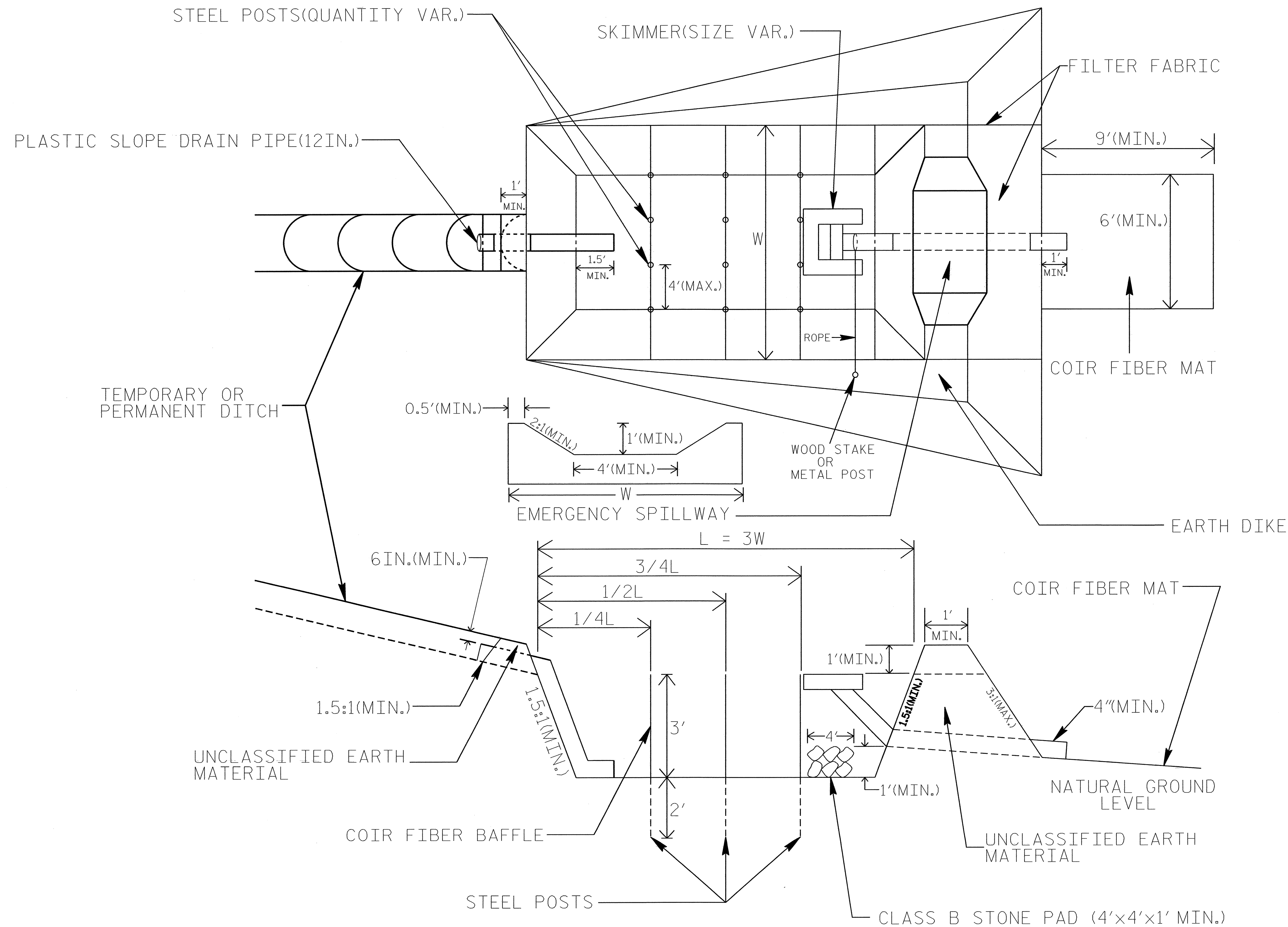


NOTE: INSTALL THREE(3) COIR FIBER BAFFLES IN SILT BASINS AND SEDIMENT DAMS AT DRAINAGE OUTLETS WITH A SPACING OF  $\frac{1}{4}$  THE BASIN LENGTH. TWO(2) COIR FIBER BAFFLES CAN BE INSTALLED IN SILT BASINS AND DAMS LESS THAN 20 FT. IN LENGTH WITH A SPACING OF  $\frac{1}{3}$  THE BASIN LENGTH.

BAFFLE MATERIAL SHALL BE SECURED TO THE BOTTOM AND SIDES OF BASIN USING 12" LANDSCAPE STAPLES

# SKIMMER BASIN WITH BAFFLES DETAIL

PROJECT REFERENCE NO. B-3377	SHEET NO. EC-2B
RW SHEET NO.	
ROADWAY DESIGN ENGINEER	HYDRAULICS ENGINEER



## COIR FIBER MAT ANCHOR OPTIONS

### NOTES

1. SEED AND PLACE MATTING FOR EROSION CONTROL ON INTERIOR SIDESLOPES.
2. LIMIT EARTH DIKE HEIGHT TO 5 FT.
3. THE MINIMUM BASIN WIDTH SHALL BE 9 FT.
4. DETERMINE EMERGENCY SPILLWAY LENGTH (FT.) USING  $Q/0.8$ , WHERE Q IS FLOW RATE (CFS) INTO BASIN.

NOT TO SCALE



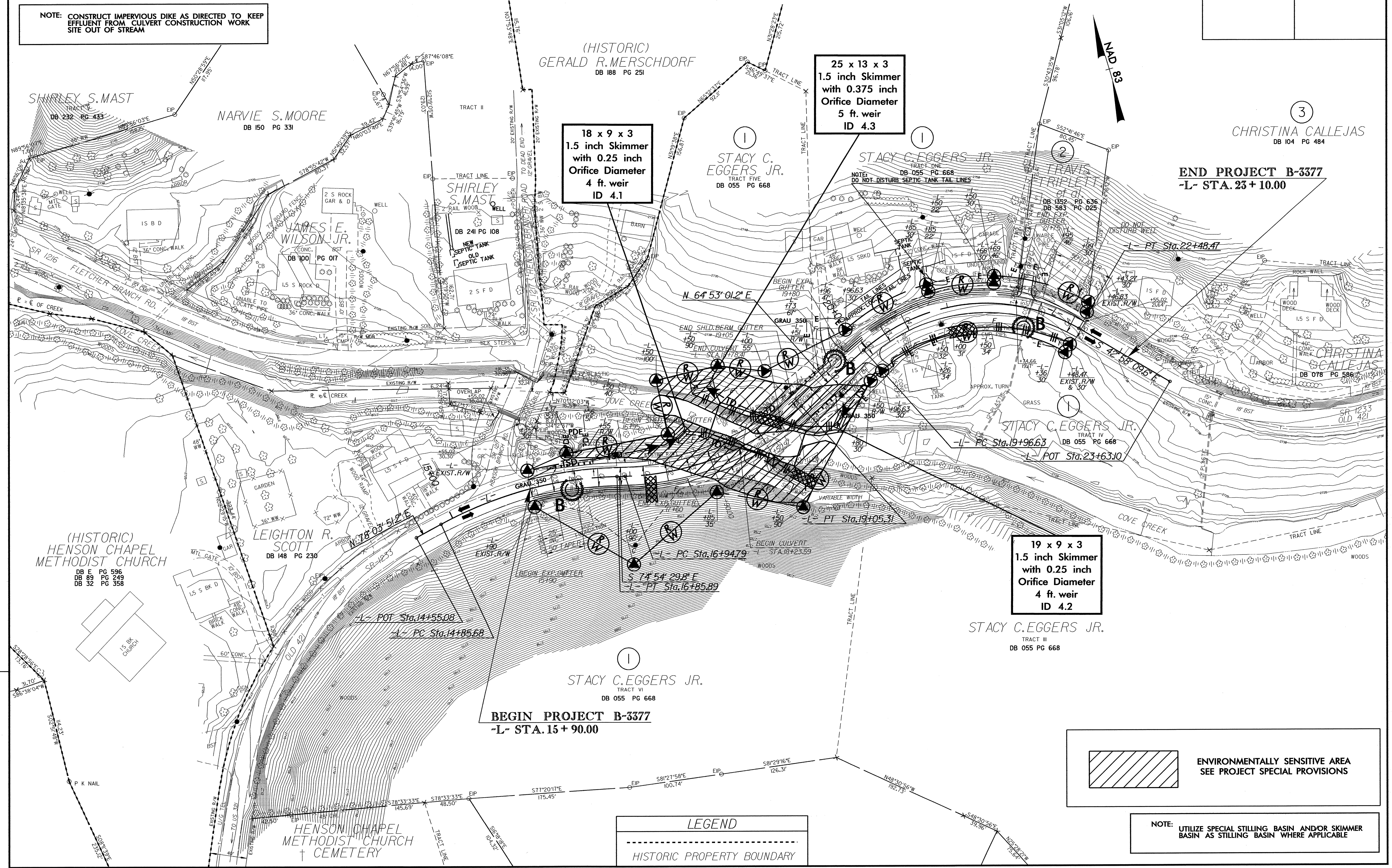
CLEARING AND GRUBBING  
EROSION CONTROL FOR  
CONSTRUCTION SHEET 4

NOTE:  
PLACE TEMPORARY ROCK SEDIMENT DAMS TYPE - B  
AND TEMPORARY ROCK SILT CHECKS TYPE - A AT  
DRAINAGE OUTLETS.

NOTE: CONSTRUCT IMPERVIOUS DIKE AS DIRECTED TO KEEP  
EFFLUENT FROM CULVERT CONSTRUCTION WORK  
SITE OUT OF STREAM

PROJECT REFERENCE NO. B-3377	SHEET NO. EC-4/CONST. 4
ROADWAY DESIGN ENGINEER	HYDRAULICS ENGINEER

REVISIONS



(HISTORIC)  
GERALD R. MERSCHDORF  
DB 188 PG 251

18 x 9 x 3  
1.5 inch Skimmer  
with 0.25 inch  
Orifice Diameter  
4 ft. weir  
ID 4.1

25 x 13 x 3  
1.5 inch Skimmer  
with 0.375 inch  
Orifice Diameter  
5 ft. weir  
ID 4.3

19 x 9 x 3  
1.5 inch Skimmer  
with 0.25 inch  
Orifice Diameter  
4 ft. weir  
ID 4.2

END PROJECT B-3377  
-L- STA. 23 + 10.00

(HISTORIC)  
HENSON CHAPEL  
METHODIST CHURCH  
DB E PG 596  
DB 89 PG 249  
DB 32 PG 358

LEIGHTON R.  
SCOTT  
DB 148 PG 230

STACY C. EGGERS JR.  
TRACT VI  
DB 055 PG 668

STACY C. EGGERS JR.  
TRACT III  
DB 055 PG 668

3  
CHRISTINA CALLEJAS  
DB 104 PG 484

BEGIN PROJECT B-3377  
-L- STA. 15 + 90.00

LEGEND

	HISTORIC PROPERTY BOUNDARY
--	----------------------------

ENVIRONMENTALLY SENSITIVE AREA  
SEE PROJECT SPECIAL PROVISIONS

NOTE: UTILIZE SPECIAL STILLING BASIN AND/OR SKIMMER  
BASIN AS STILLING BASIN WHERE APPLICABLE

PROJECT REFERENCE NO.	SHEET NO.
B-3377	EC-5/CONST. 4
RW SHEET NO.	
ROADWAY DESIGN ENGINEER	HYDRAULICS ENGINEER

NOTE: CONSTRUCT IMPERVIOUS DIKE AS DIRECTED TO KEEP EFFLUENT FROM CULVERT CONSTRUCTION WORK SITE OUT OF STREAM

25 x 13 x 3  
1.5 inch Skimmer  
with 0.375 inch  
Orifice Diameter  
5 ft. weir  
ID 4.3

18 x 9 x 3  
1.5 inch Skimmer  
with 0.25 inch  
Orifice Diameter  
4 ft. weir  
ID 4.1

19 x 9 x 3  
1.5 inch Skimmer  
with 0.25 inch  
Orifice Diameter  
4 ft. weir  
ID 4.2

END PROJECT B-3377  
-L- STA. 23 + 10.00

BEGIN PROJECT B-3377  
-L- STA. 15 + 90.00

NOTE: UTILIZE SPECIAL STILLING BASIN AND/OR SKIMMER BASIN AS STILLING BASIN WHERE APPLICABLE

LEGEND  
-----  
HISTORIC PROPERTY BOUNDARY

REVISIONS

