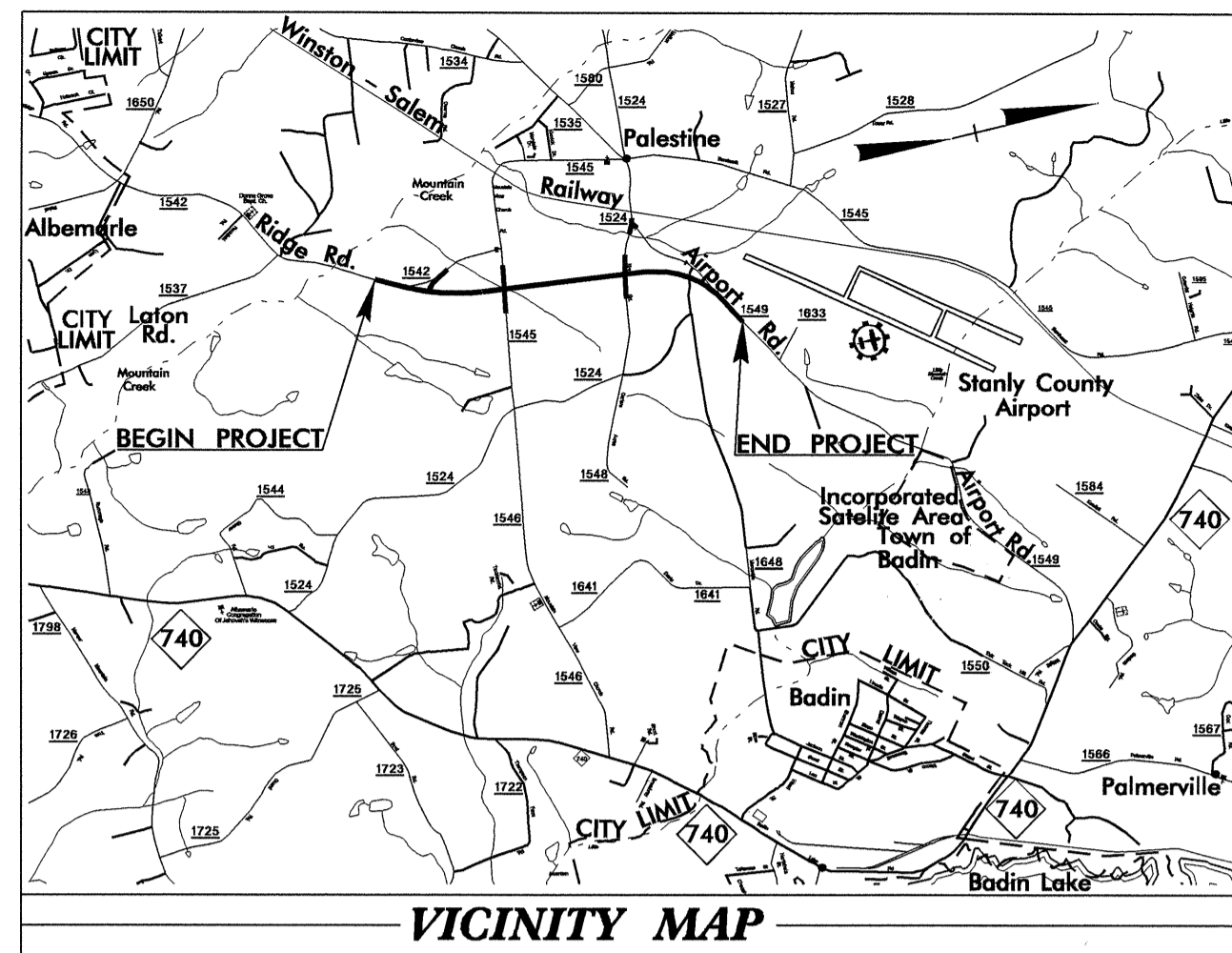


TIP PROJECT: U-3300B

CONTRACT: 202065



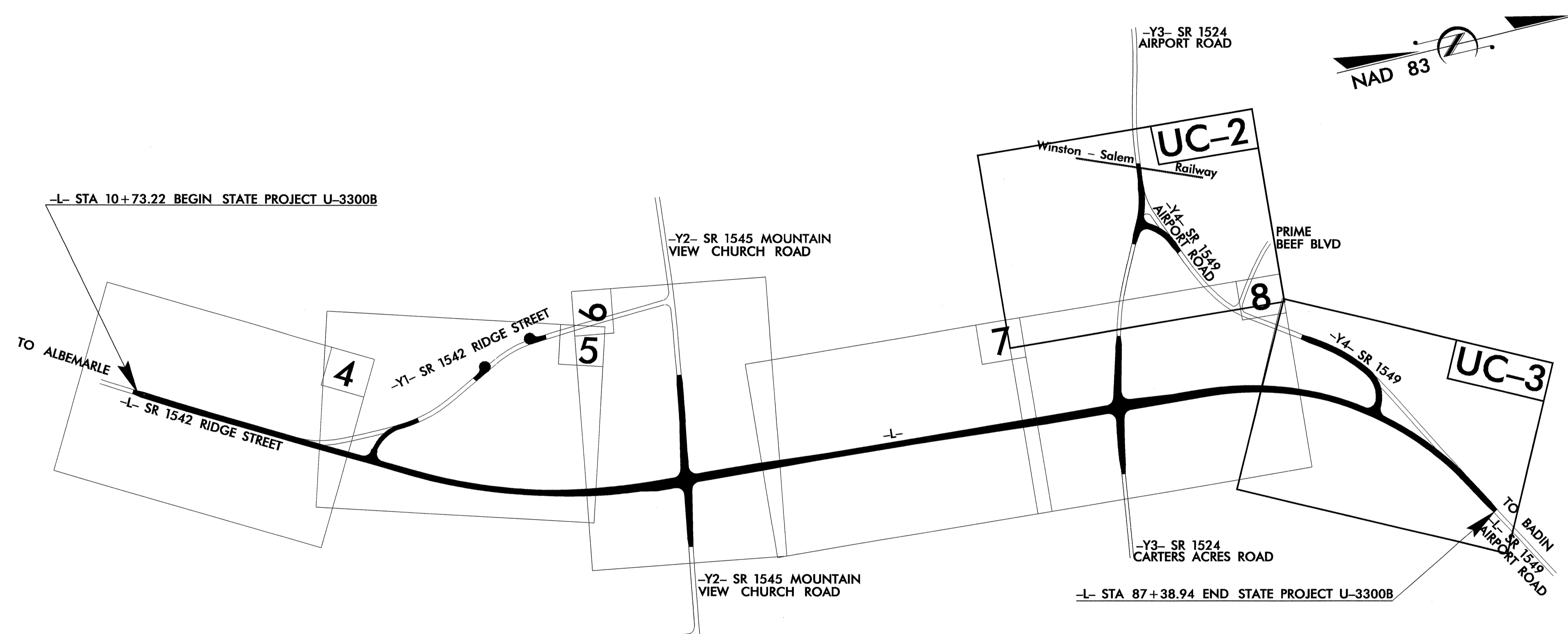
STATE OF NORTH CAROLINA
DIVISION OF HIGHWAYS

**UTILITY CONSTRUCTION PLANS
STANLY COUNTY**

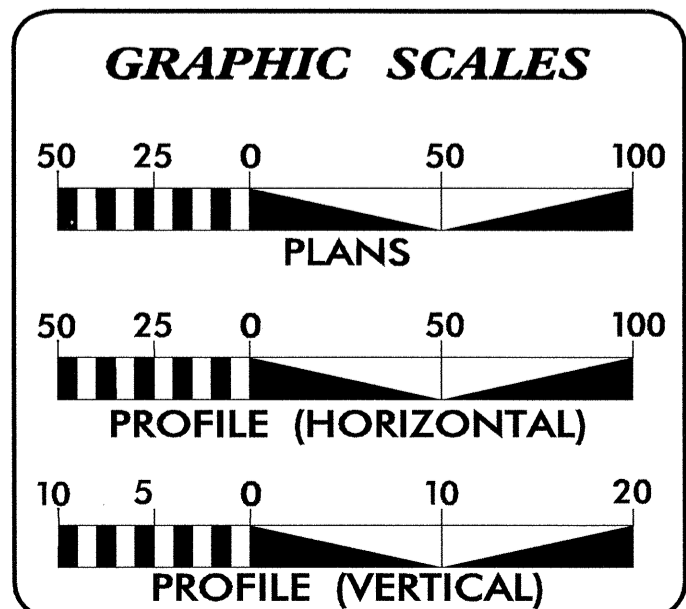
**LOCATION: ALBEMARLE-SR 1542 (RIDGE STREET EXTENSION)
FROM EXISTING RIDGE STREET TO AIRPORT ROAD**

TYPE OF WORK: UTILITY CONSTRUCTION

T.I.P. NO.	SHEET NO.
U-3300B	UC-1



THERE IS NO CONTROL OF ACCESS ON THIS PROJECT
NOTE: THIS PROJECT IS NOT WITHIN ANY MUNICIPAL BOUNDARIES
CLEARING ON THIS PROJECT SHALL BE PERFORMED TO THE LIMITS ESTABLISHED BY METHOD III



SHEET NO.	DESCRIPTION
UC-1	TITLE SHEET
UC-2, UC-3	UTILITY CONSTRUCTION PLAN SHEETS
UC-4	PROFILE SHEET
UC-5	DETAILS SHEET

WATER AND SEWER OWNERS ON PROJECT

(1) WATER - STANLY COUNTY
(2) SANITARY SEWER - STANLY COUNTY



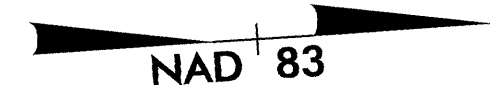
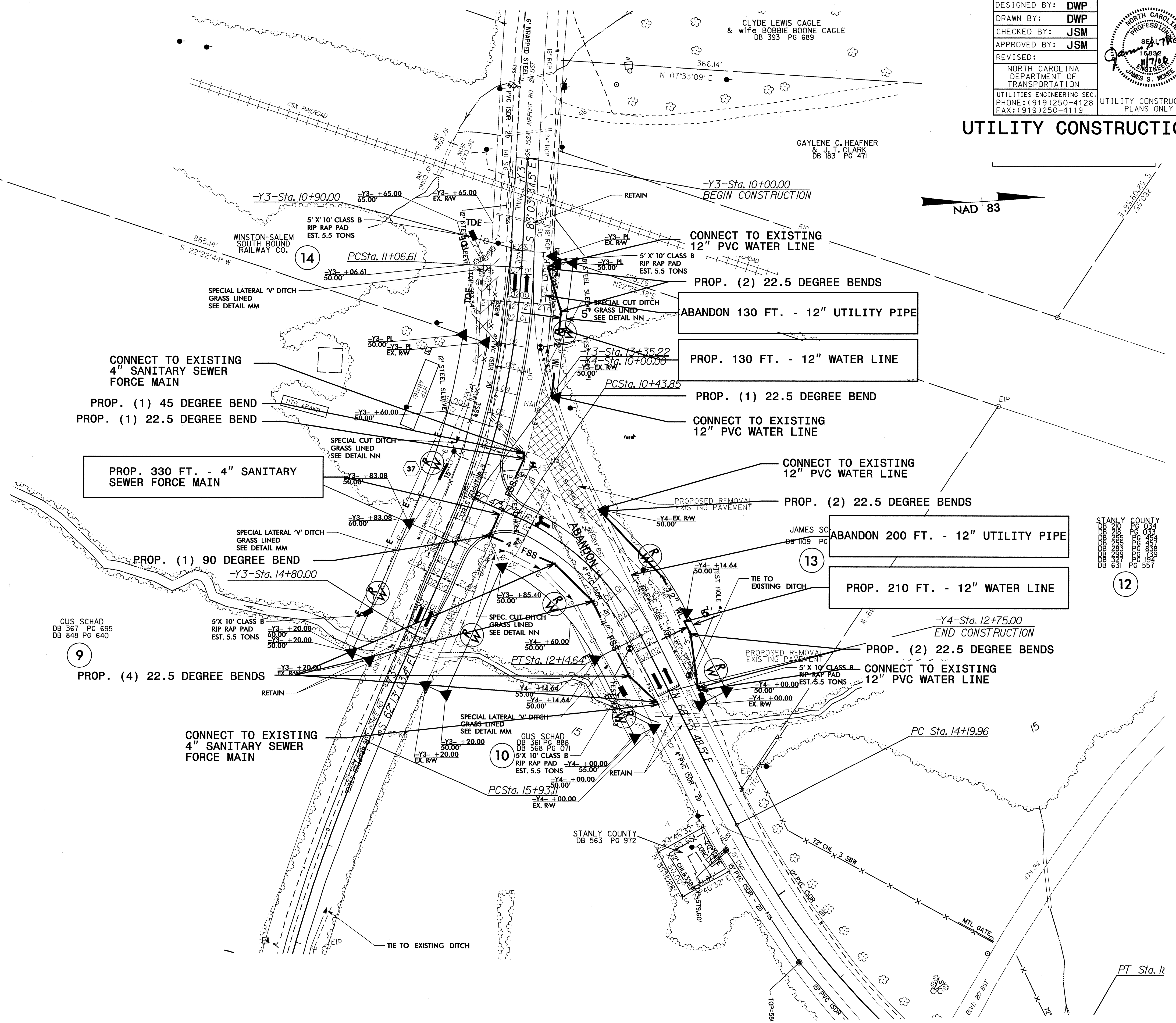
PREPARED IN THE OFFICE OF:
**DIVISION OF HIGHWAYS
UTILITIES ENGINEERING
SECTION**

1591 MAIL SERVICES CENTER
RALEIGH NC 27699-1591
PHONE (919) 250-4128
FAX (919) 250-4119

Roger Worthington, P.E. UTILITIES SECTION ENGINEER
Steve McKee, P.E. UTILITIES SQUAD LEADER PROJECT ENGINEER
Donald Proper UTILITIES PROJECT DESIGNER

PROJECT REFERENCE NO.	SHEET NO.
U-3300B	UC-2
DESIGNED BY: DWP	
DRAWN BY: DWP	
CHECKED BY: JSM	
APPROVED BY: JSM	
REVISED:	
NORTH CAROLINA DEPARTMENT OF TRANSPORTATION	
UTILITIES ENGINEERING SEC. PHONE: (919) 250-4128 FAX: (919) 250-4119	
UTILITY CONSTRUCTION PLANS ONLY	

UTILITY CONSTRUCTION



STANLY COUNTY
 DB 563 PG 972
 DB 567 PG 695
 DB 568 PG 695
 DB 569 PG 695
 DB 570 PG 695
 DB 571 PG 695
 DB 572 PG 695
 DB 573 PG 695
 DB 574 PG 695
 DB 575 PG 695
 DB 576 PG 695
 DB 577 PG 695
 DB 578 PG 695
 DB 579 PG 695
 DB 580 PG 695
 DB 581 PG 695
 DB 582 PG 695
 DB 583 PG 695
 DB 584 PG 695
 DB 585 PG 695
 DB 586 PG 695
 DB 587 PG 695
 DB 588 PG 695
 DB 589 PG 695
 DB 590 PG 695
 DB 591 PG 695
 DB 592 PG 695
 DB 593 PG 695
 DB 594 PG 695
 DB 595 PG 695
 DB 596 PG 695
 DB 597 PG 695
 DB 598 PG 695
 DB 599 PG 695
 DB 600 PG 695

12

GUS SCHAD
 DB 367 PG 695
 DB 648 PG 640

9

GUS SCHAD
 DB 367 PG 695
 DB 648 PG 640

10

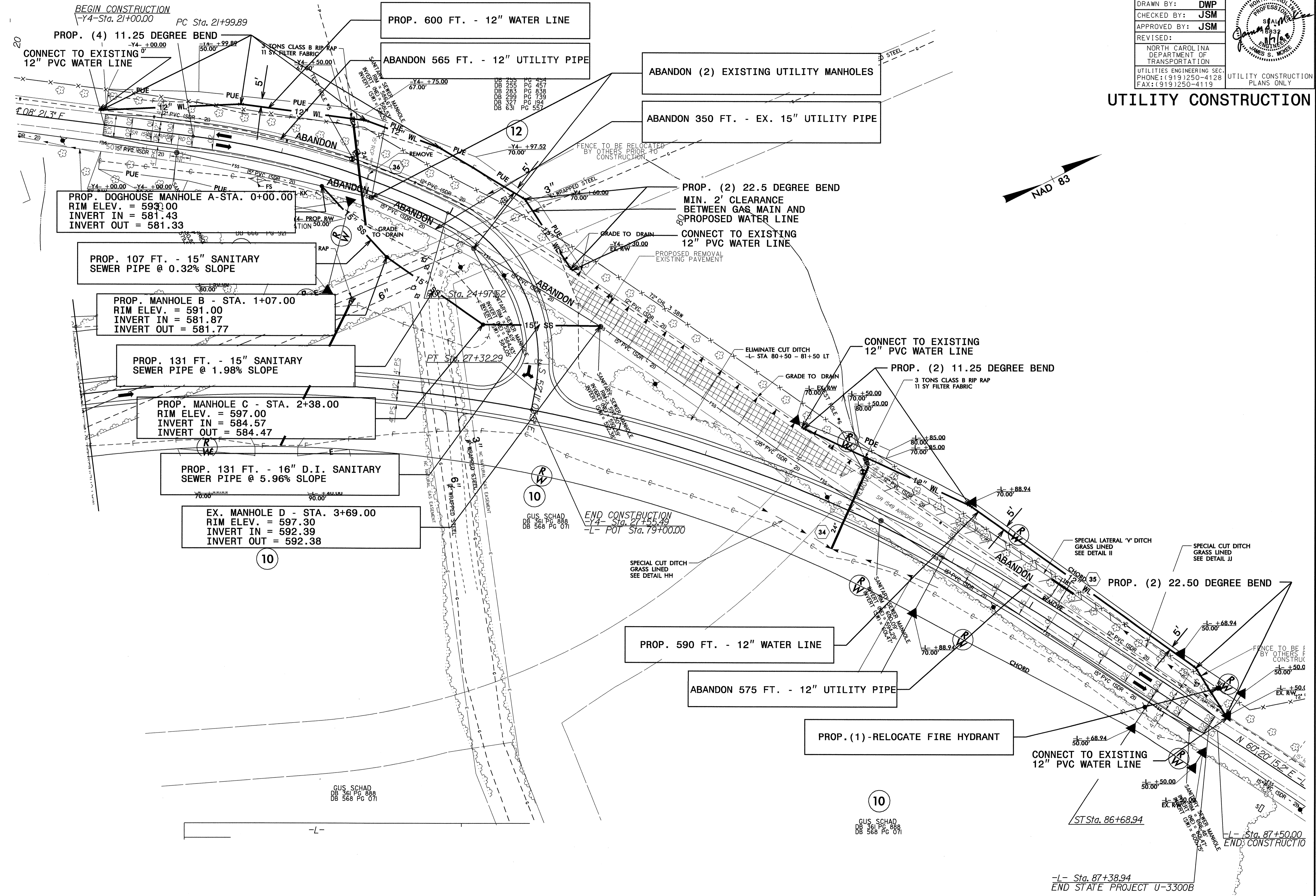
JAMES SC
 DB 109 PG

13

PT Sta. 11

PROJECT REFERENCE NO.	SHEET NO.
U-3300B	UC-3
DESIGNED BY: DWP	
DRAWN BY: DWP	
CHECKED BY: JSM	
APPROVED BY: JSM	
REVISED:	
NORTH CAROLINA DEPARTMENT OF TRANSPORTATION UTILITIES ENGINEERING SEC. PHONE: (919) 250-4128 FAX: (919) 250-4119	
UTILITY CONSTRUCTION PLANS ONLY	

UTILITY CONSTRUCTION



PROJECT REFERENCE NO.	SHEET NO.
U-3300B	UC-4
DESIGNED BY: DWP	
DRAWN BY: DWP	
CHECKED BY: JSM	
APPROVED BY: JSM	
REVISED:	
NORTH CAROLINA DEPARTMENT OF TRANSPORTATION	
UTILITIES ENGINEERING SEC. PHONE: (919) 250-4128 FAX: (919) 250-4119	
UTILITY CONSTRUCTION PLANS ONLY	

UTILITY CONSTRUCTION

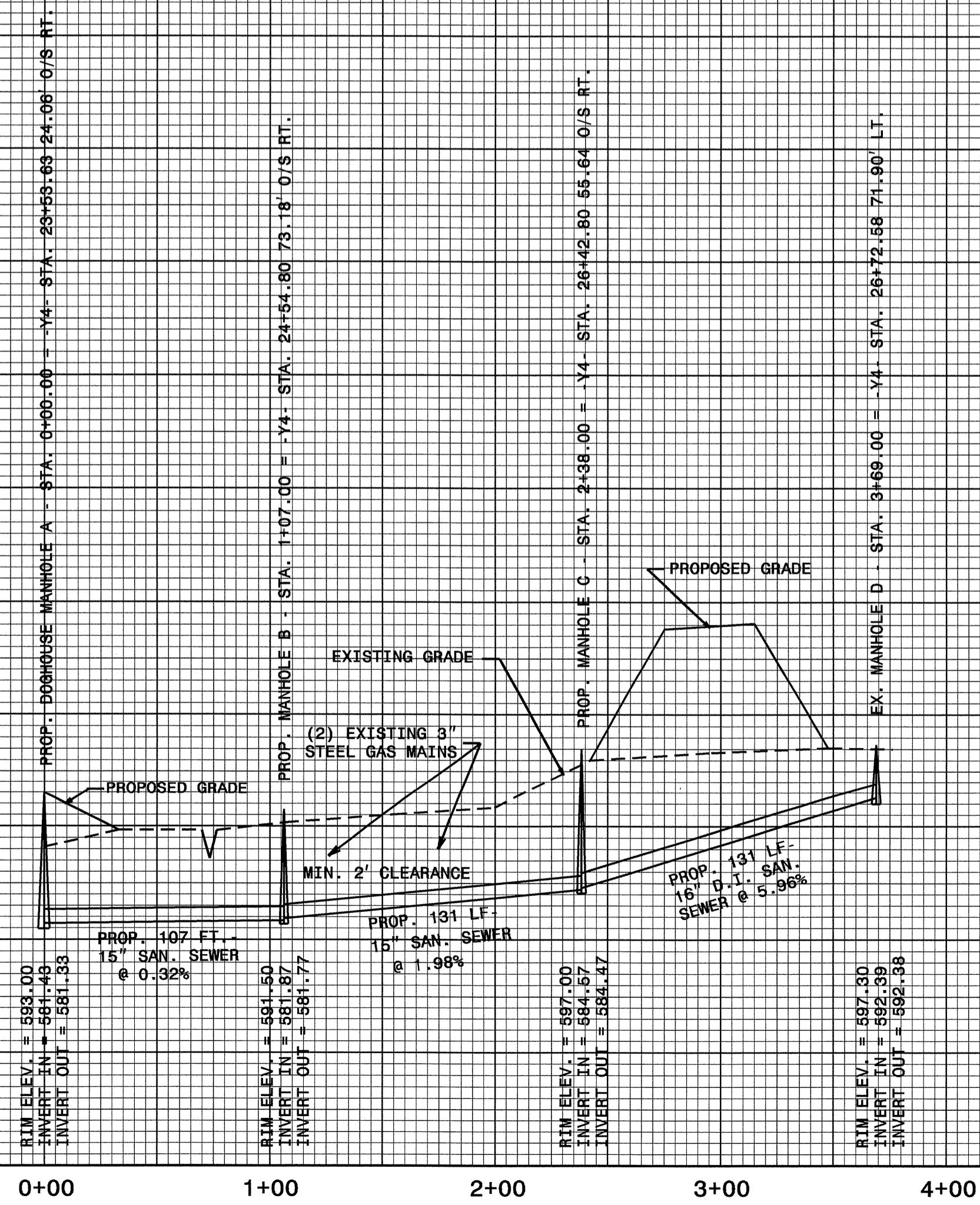
9

600

590

580

570

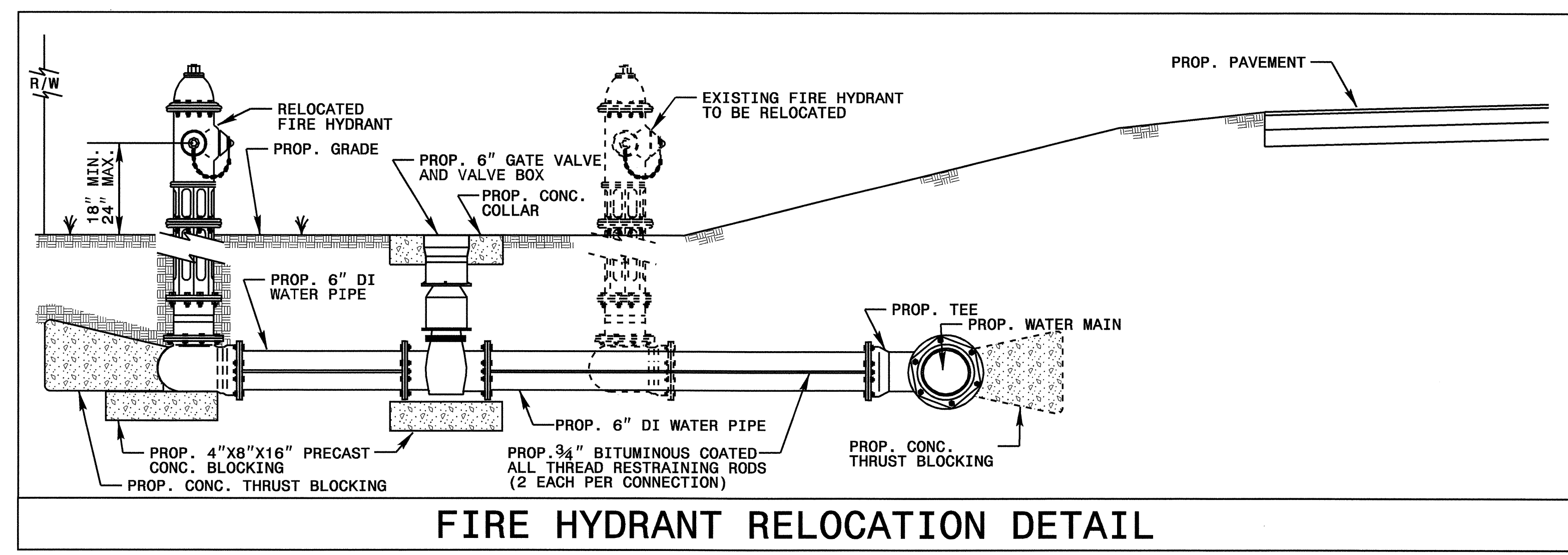
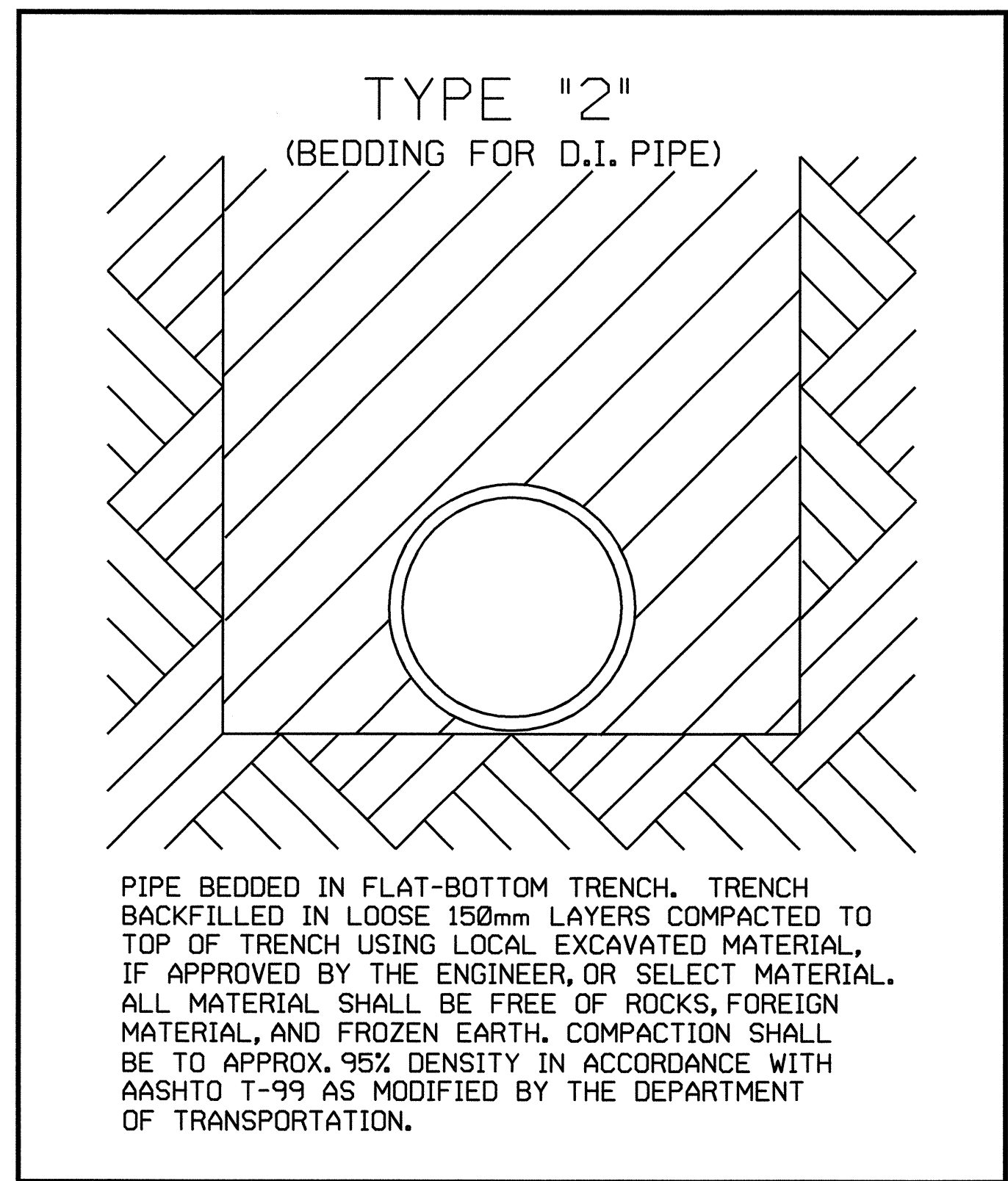
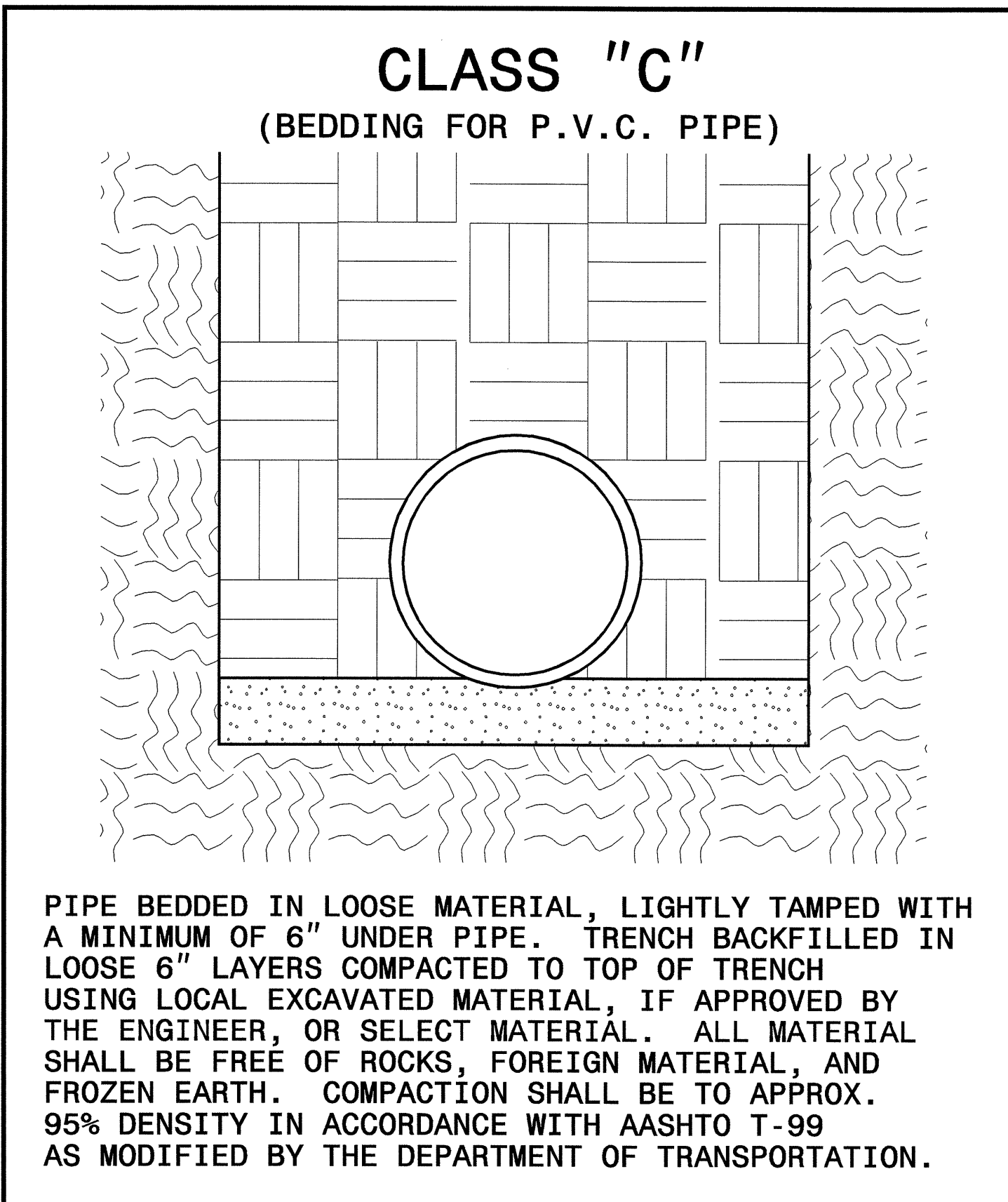


5/14/99

07-NOV-2008 11:50
 \\snp\share\cadd\11\11033008_psh.dtl_05.dgn

PROJECT REFERENCE NO.	SHEET NO.
U-3300B	UC-5
DESIGNED BY: DWP	
DRAWN BY: DWP	
CHECKED BY: JSM	
APPROVED BY: JSM	
REVISED:	
NORTH CAROLINA DEPARTMENT OF TRANSPORTATION	
UTILITIES ENGINEERING SEC. PHONE: (919) 250-4128 FAX: (919) 250-4119	

UTILITY CONSTRUCTION

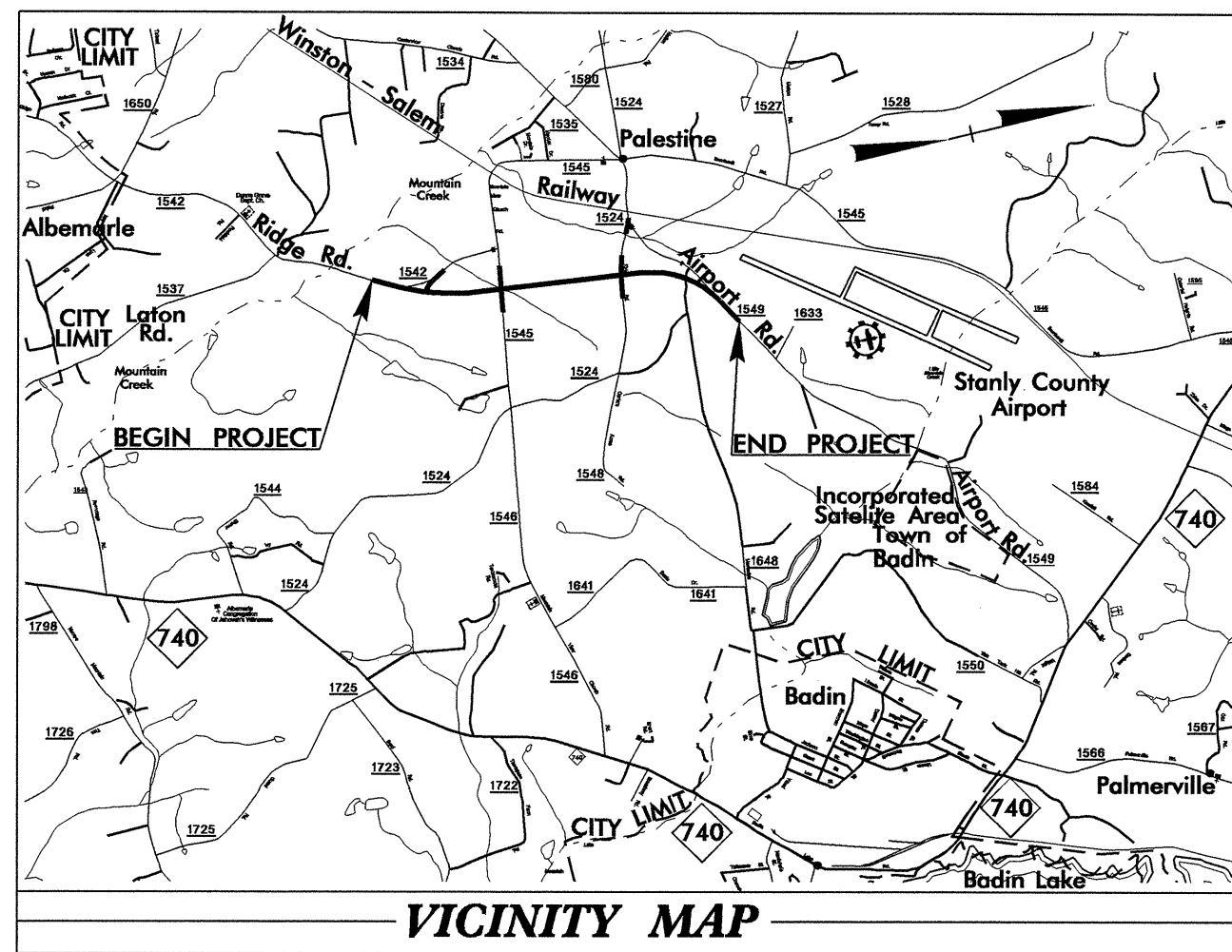


MAXIMUM TRENCH WIDTH AT TOP OF PIPE

NOMINAL PIPE SIZE (INCHES)	TRENCH WIDTH (INCHES)	NOMINAL PIPE SIZE (INCHES)	TRENCH WIDTH (INCHES)
4	28	20	44
6	30	24	48
8	32	30	54
10	34	36	60
12	36	42	66
14	38	48	72
16	40	54	78
18	42		

TIP PROJECT: U-3300B

CONTRACT: 202065



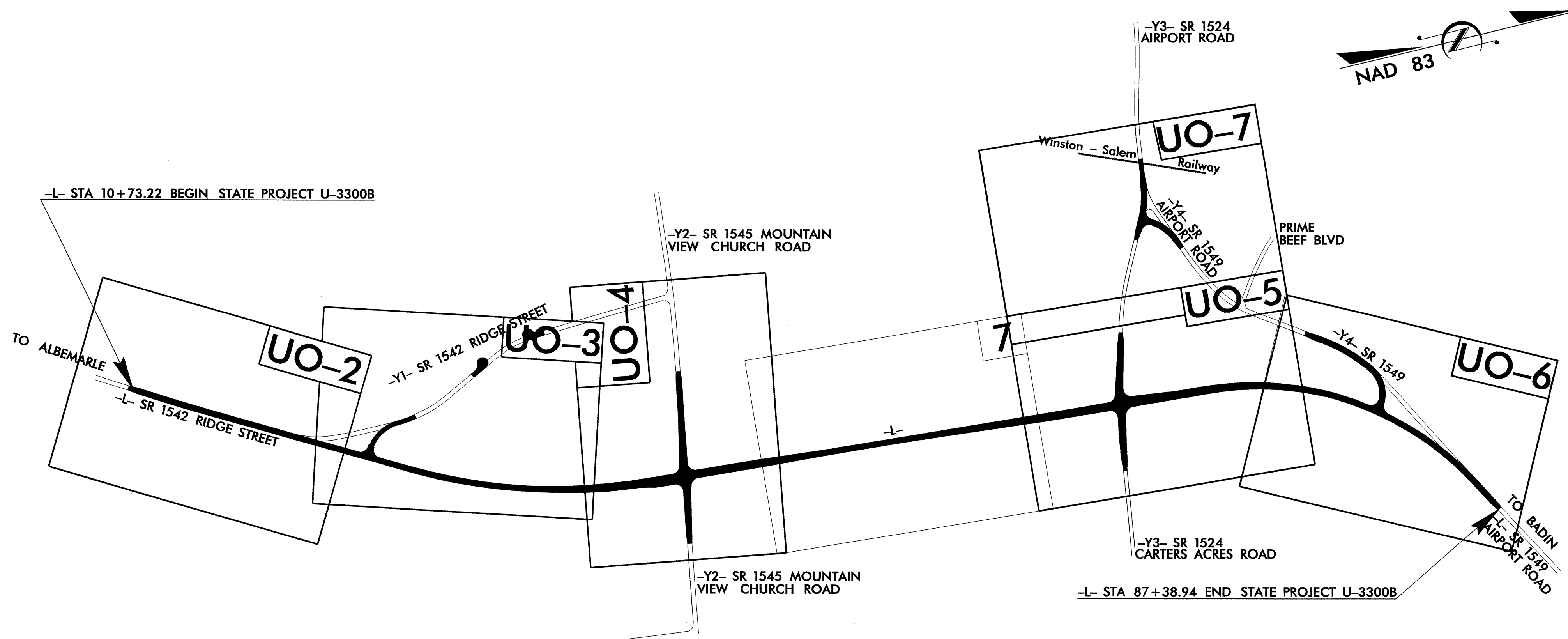
STATE OF NORTH CAROLINA
DIVISION OF HIGHWAYS

**UTILITIES BY OTHERS PLANS
STANLY COUNTY**

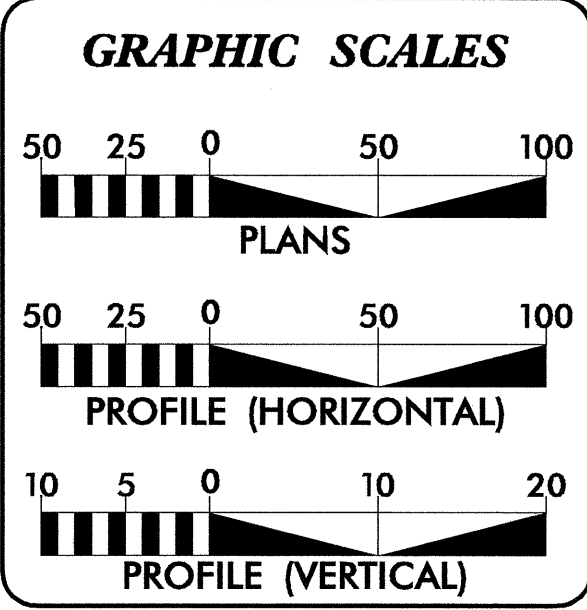
LOCATION: ALBEMARLE-SR 1542 (RIDGE STREET EXTENSION)
FROM EXISTING RIDGE STREET TO AIRPORT ROAD

TYPE OF WORK: UTILITY CONSTRUCTION

T.I.P. NO.	SHEET NO.
U-3300B	UO-1



THERE IS NO CONTROL OF ACCESS ON THIS PROJECT
NOTE: THIS PROJECT IS NOT WITHIN ANY MUNICIPAL BOUNDARIES
CLEARING ON THIS PROJECT SHALL BE PERFORMED TO THE LIMITS ESTABLISHED BY METHOD III



INDEX OF SHEETS

SHEET NO.	DESCRIPTION
UO-1	TITLE SHEET
UO-2 THRU UO-7	UTILITY BY OTHERS PLAN SHEETS

- UTILITY OWNERS ON PROJECT
- (1) CITY OF ALBEMARLE - POWER
 - (2) WINDSTREAM - TELEPHONE
 - (3) TIME WARNER - CABLE TELEVISION
 - (4) PIEDMONT NATURAL GAS COMPANY - GAS

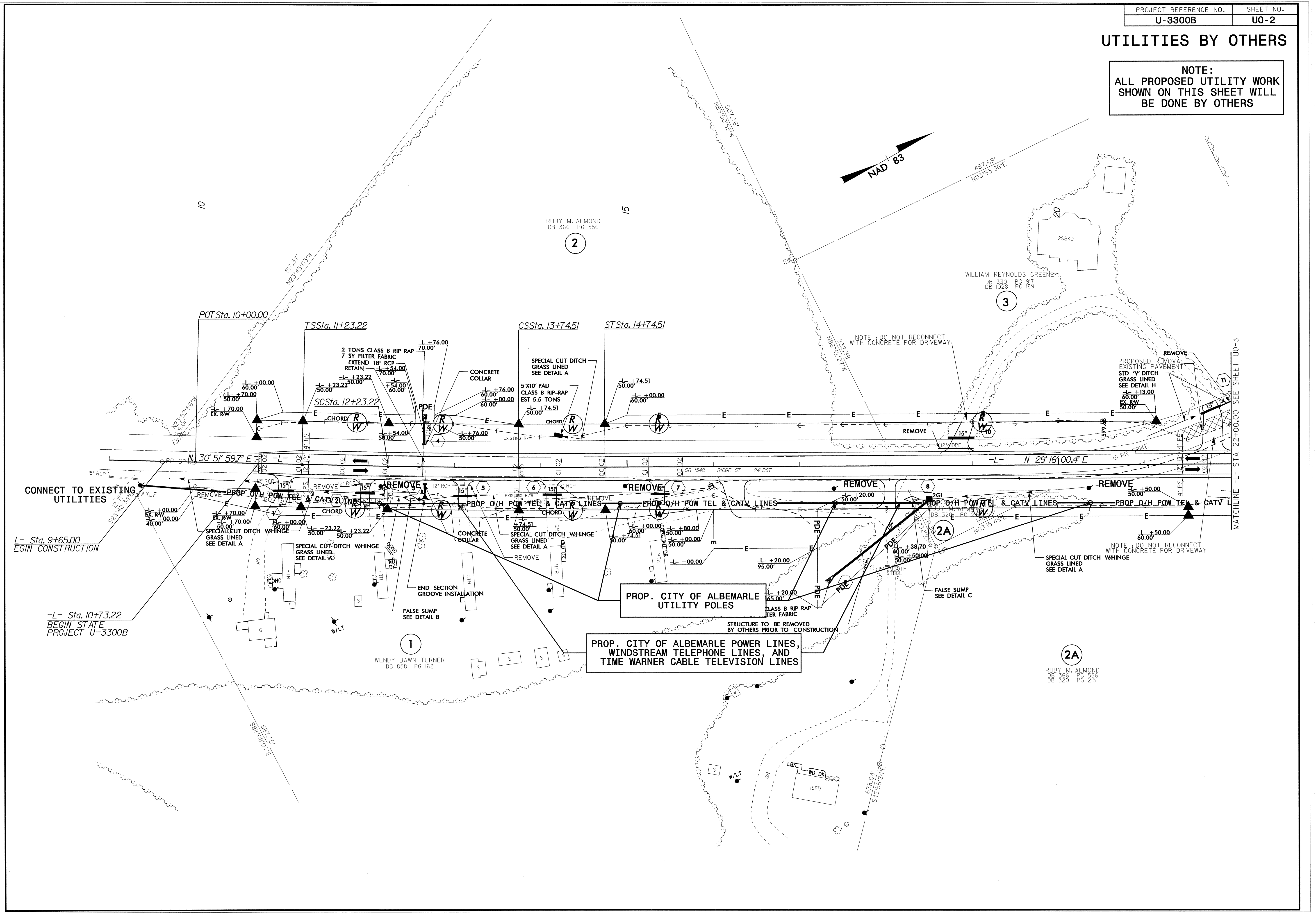
PREPARED IN THE OFFICE OF:
DIVISION OF HIGHWAYS
UTILITIES ENGINEERING SECTION

1591 MAIL SERVICES CENTER
RALEIGH NC 27699-1591
PHONE (919) 250-4128
FAX (919) 250-4119

Roger Worthington, P.E. UTILITIES SECTION ENGINEER
Steve McKee, P.E. UTILITIES SQUAD LEADER PROJECT ENGINEER
Donald Proper UTILITIES PROJECT DESIGNER

UTILITIES BY OTHERS

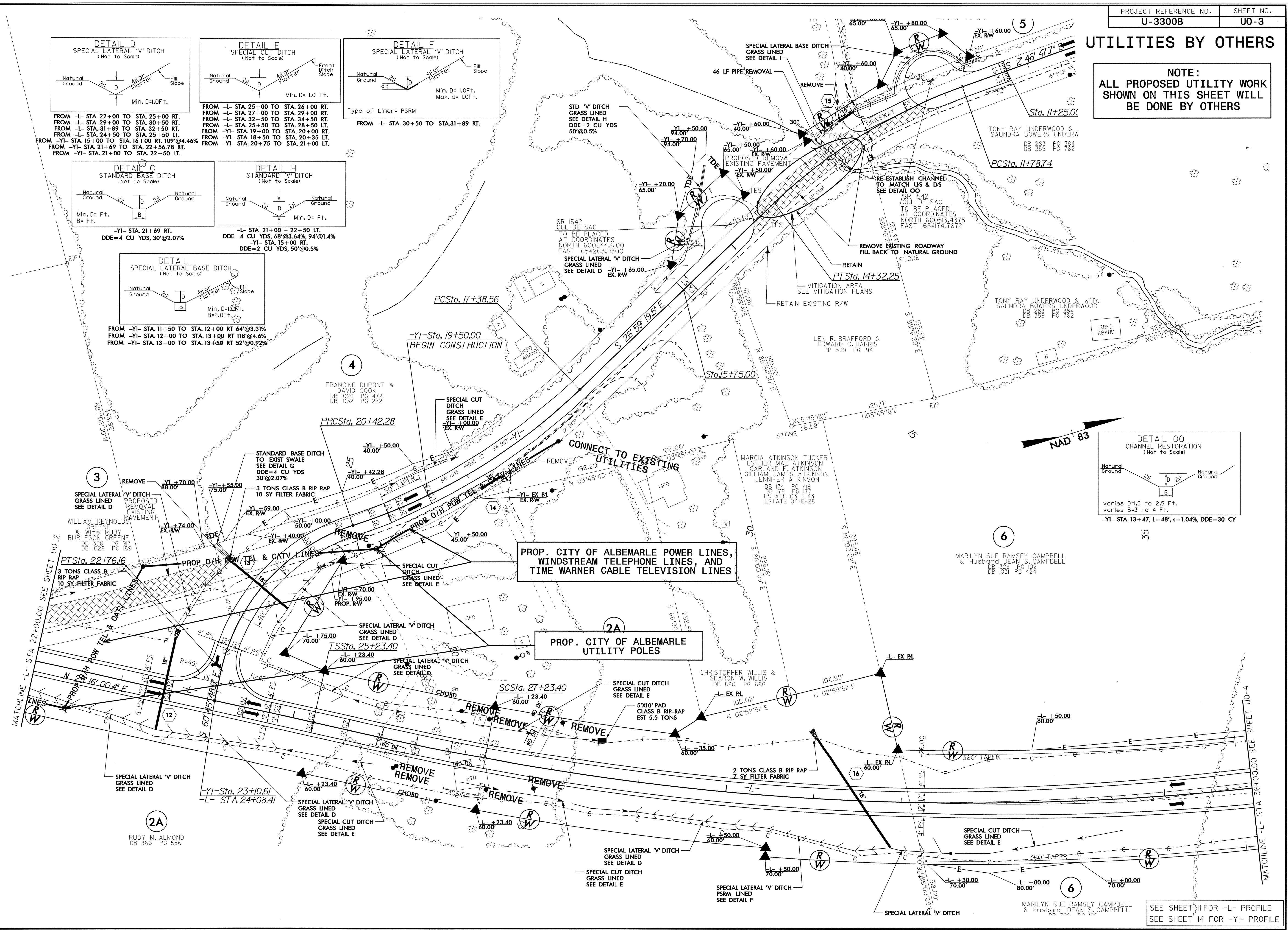
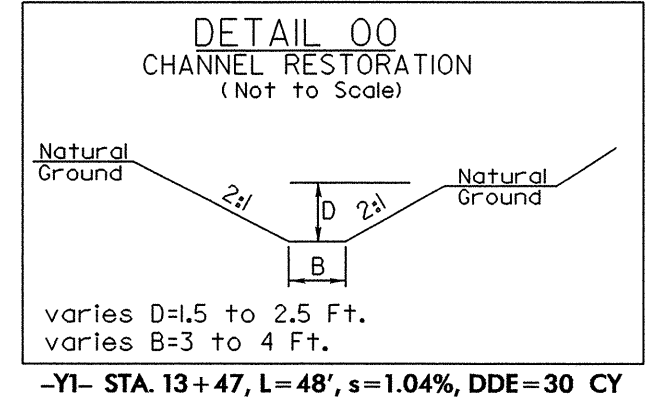
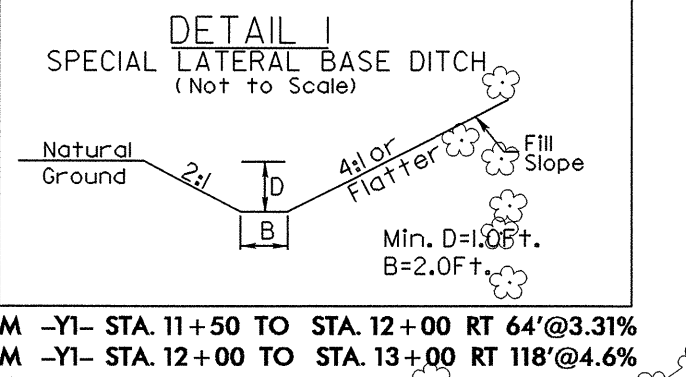
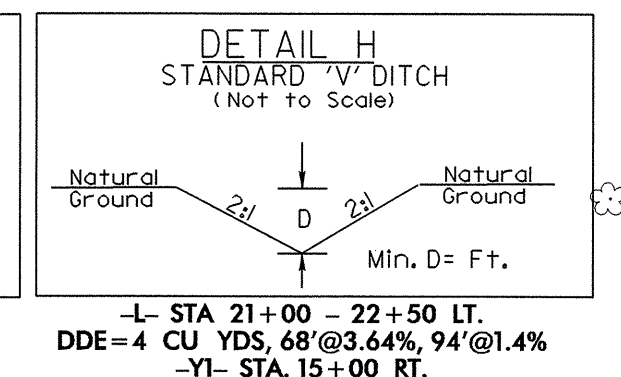
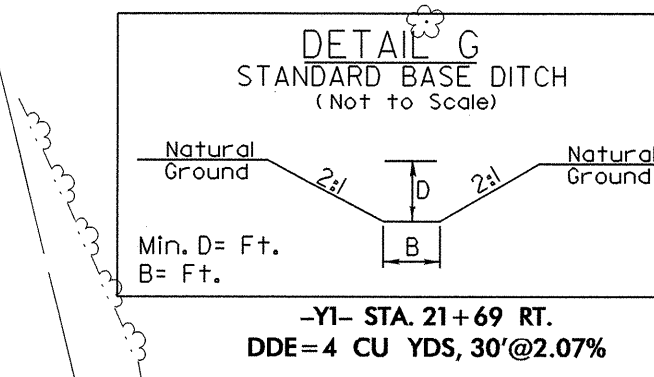
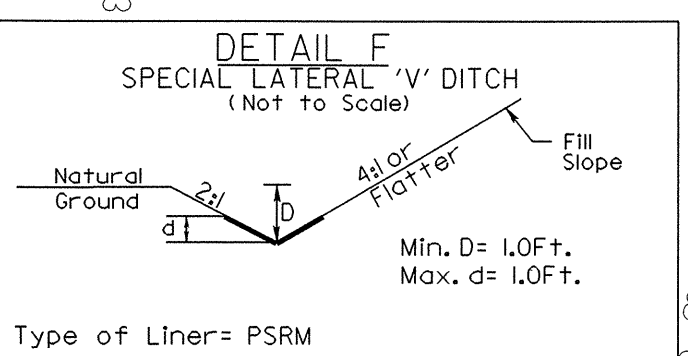
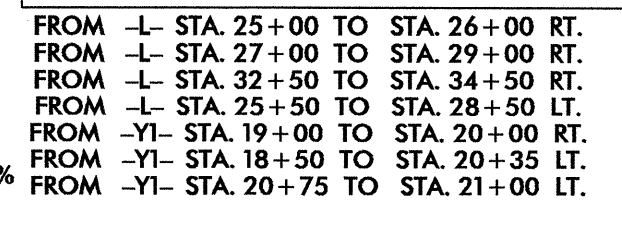
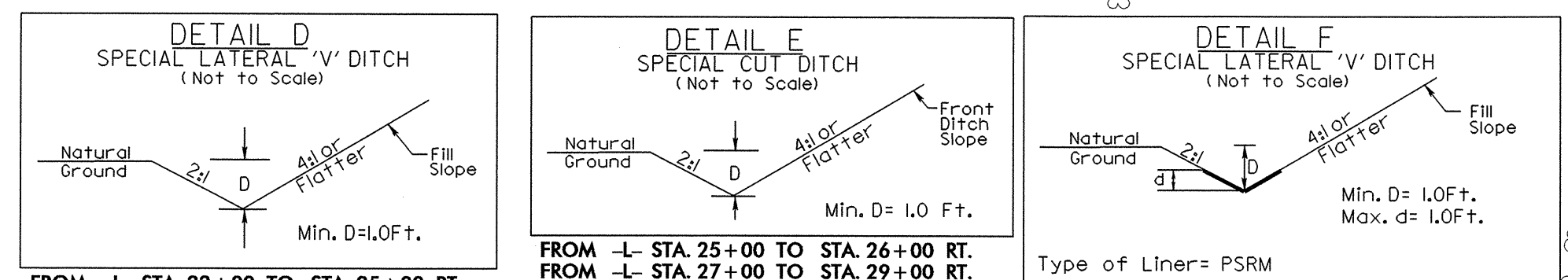
NOTE:
ALL PROPOSED UTILITY WORK
SHOWN ON THIS SHEET WILL
BE DONE BY OTHERS



2A
RUBY M. ALMOND
DB 366 PG 556
DB 326 PG 215

UTILITIES BY OTHERS

NOTE:
ALL PROPOSED UTILITY WORK SHOWN ON THIS SHEET WILL BE DONE BY OTHERS

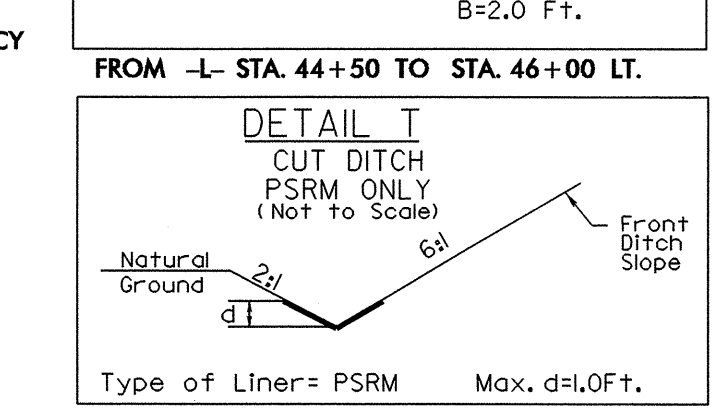
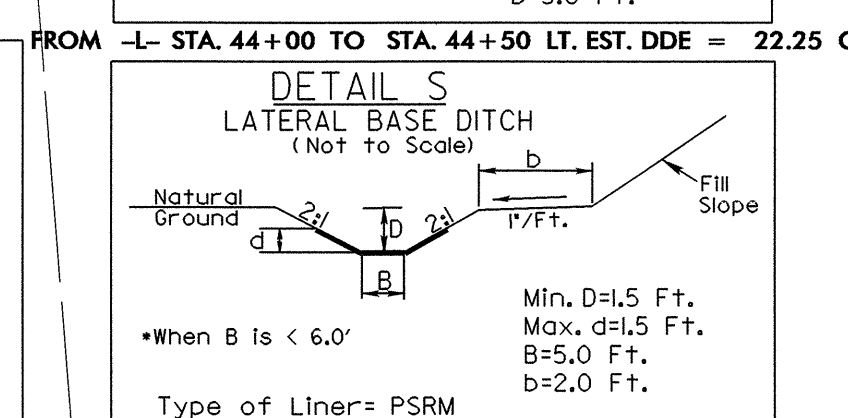
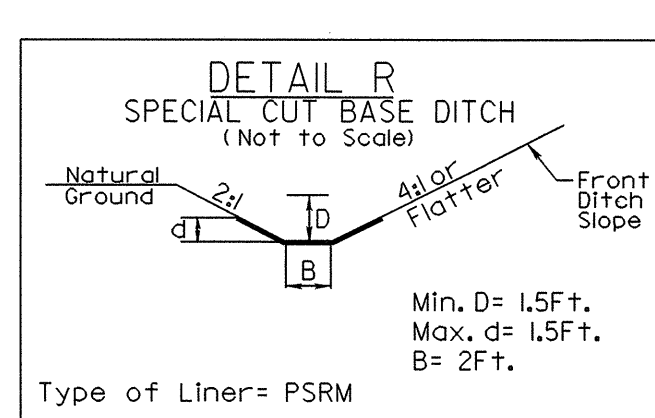
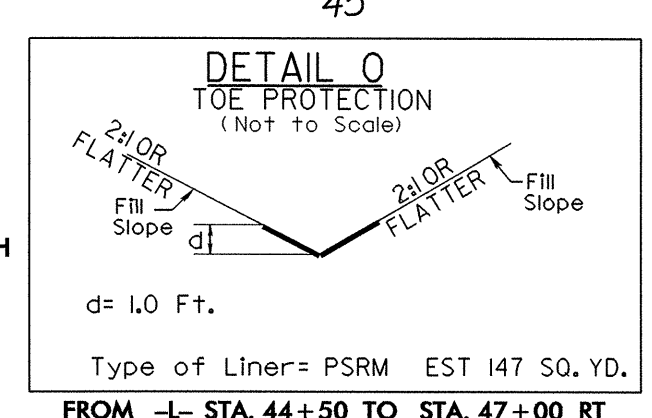
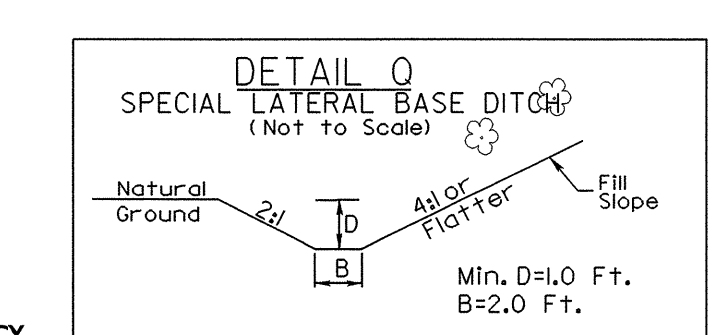
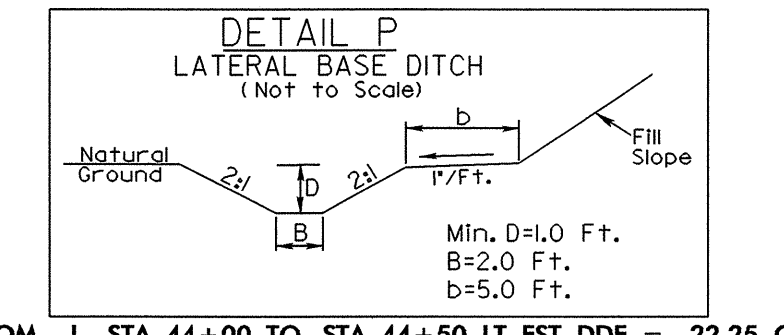
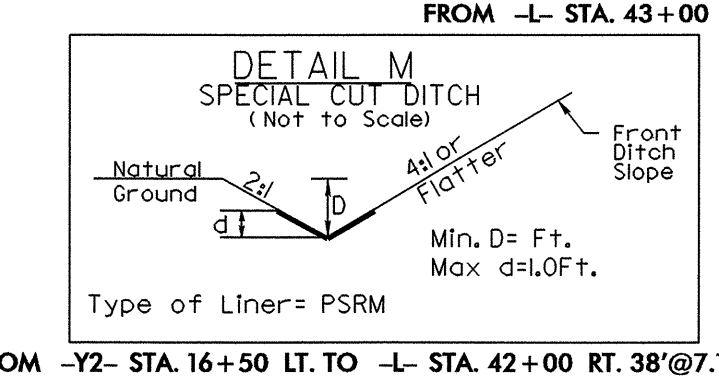
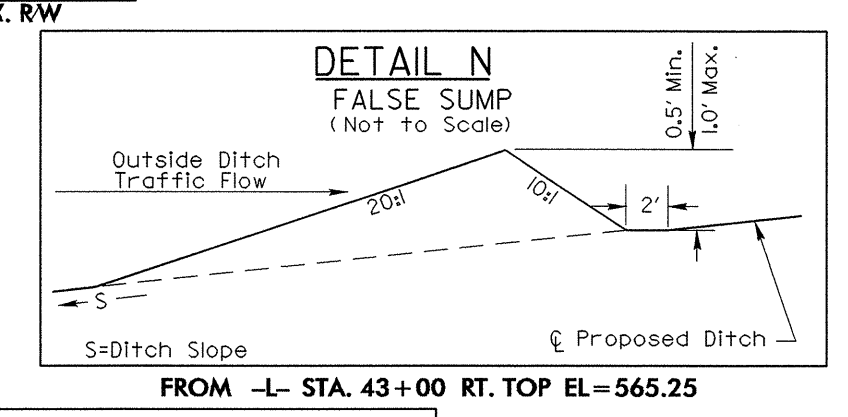
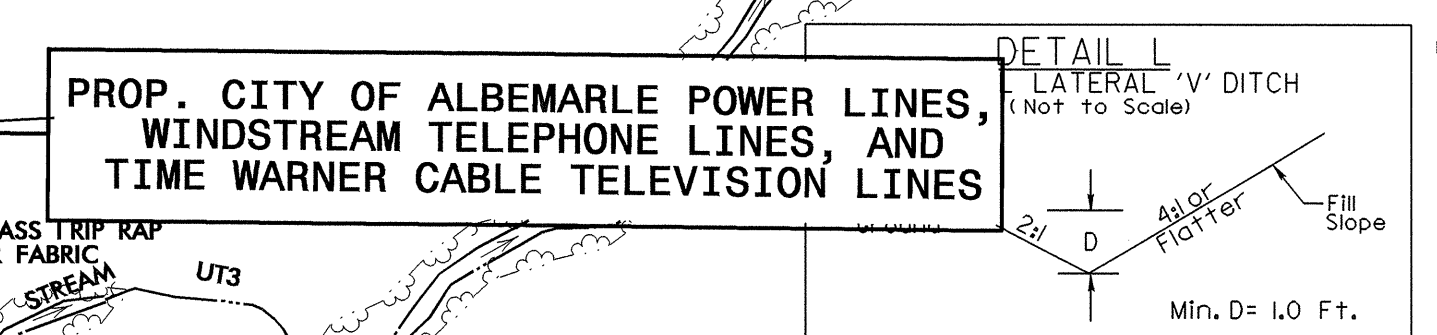
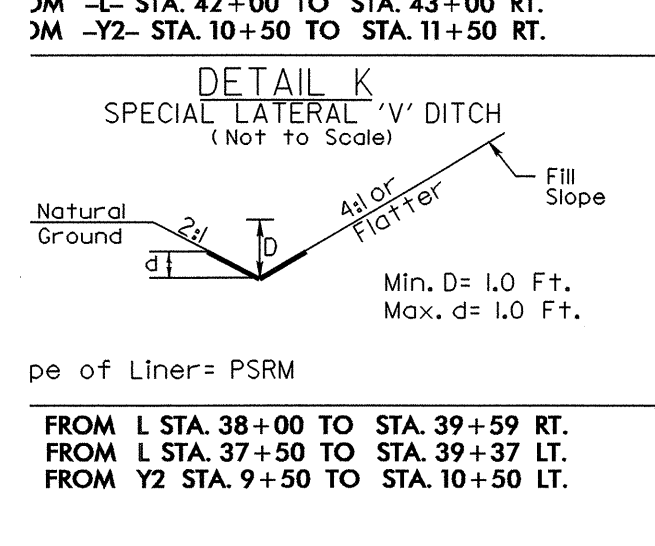
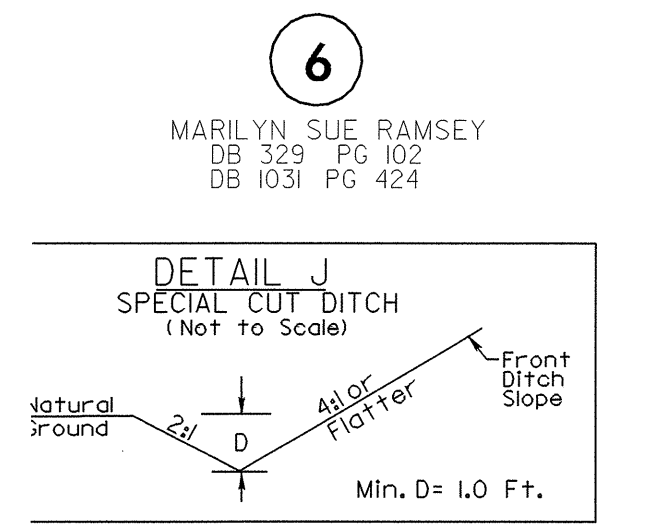
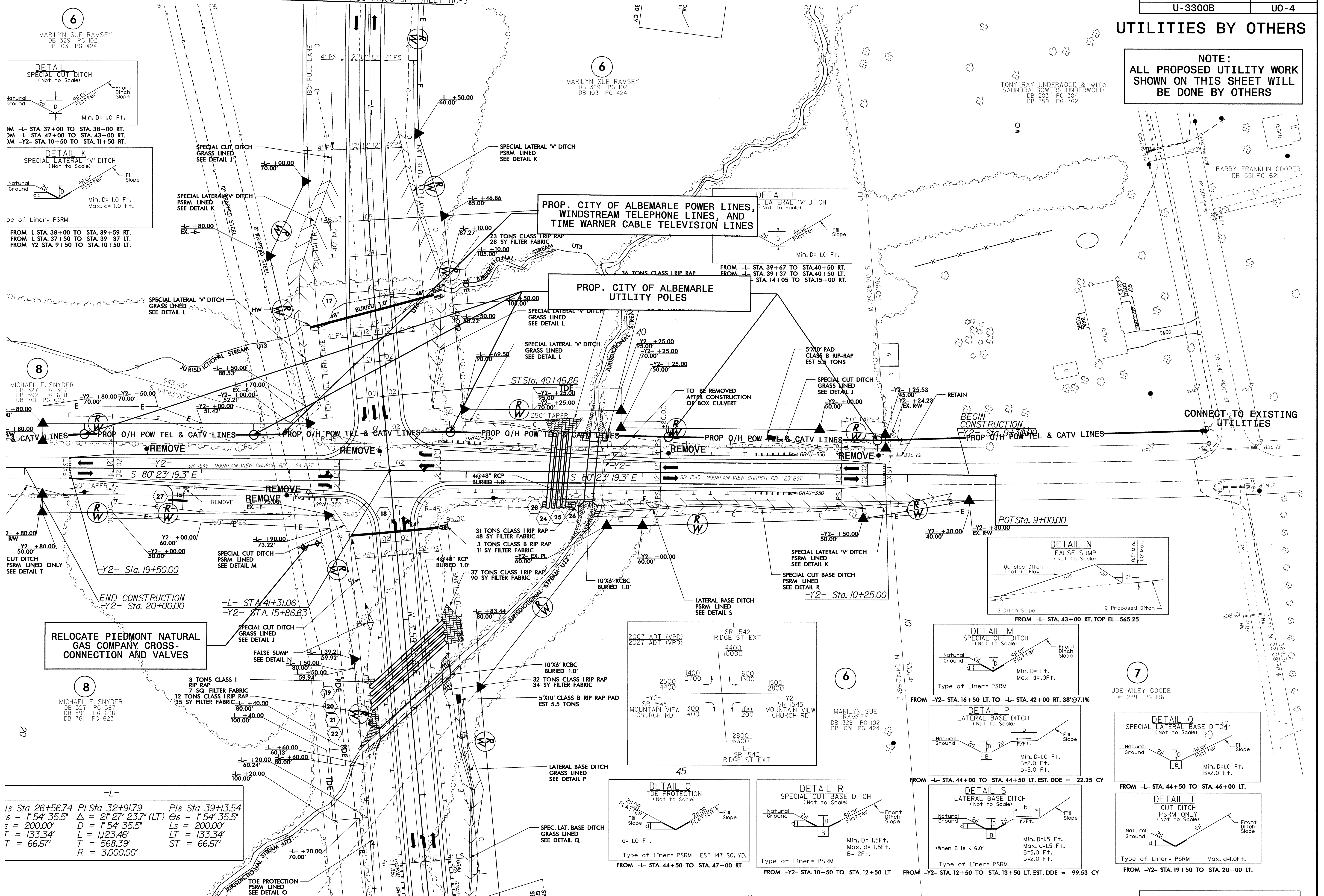


07-NOV-2008 07:31
C:\projects\3300b\psh_uo03.dgn

SEE SHEET 11 FOR -L- PROFILE
SEE SHEET 14 FOR -YI- PROFILE

UTILITIES BY OTHERS

NOTE:
ALL PROPOSED UTILITY WORK SHOWN ON THIS SHEET WILL BE DONE BY OTHERS



RELOCATE PIEDMONT NATURAL GAS COMPANY CROSS-CONNECTION AND VALVES

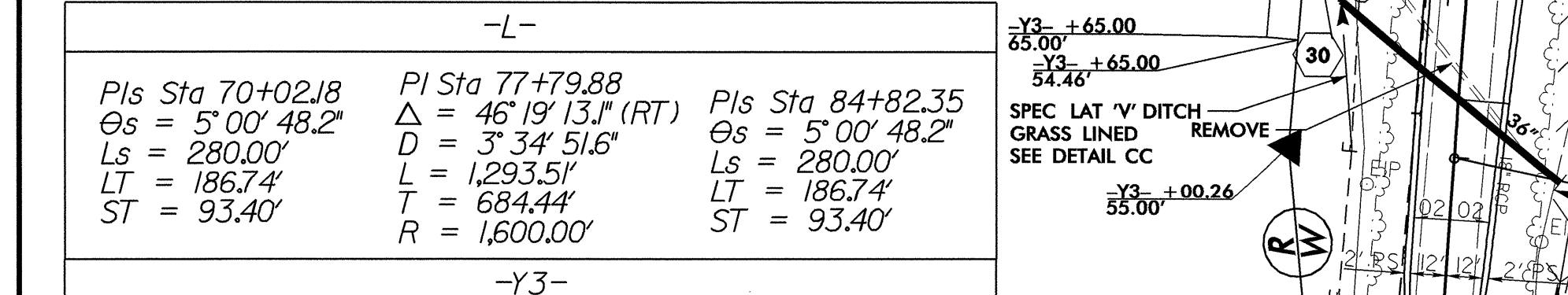
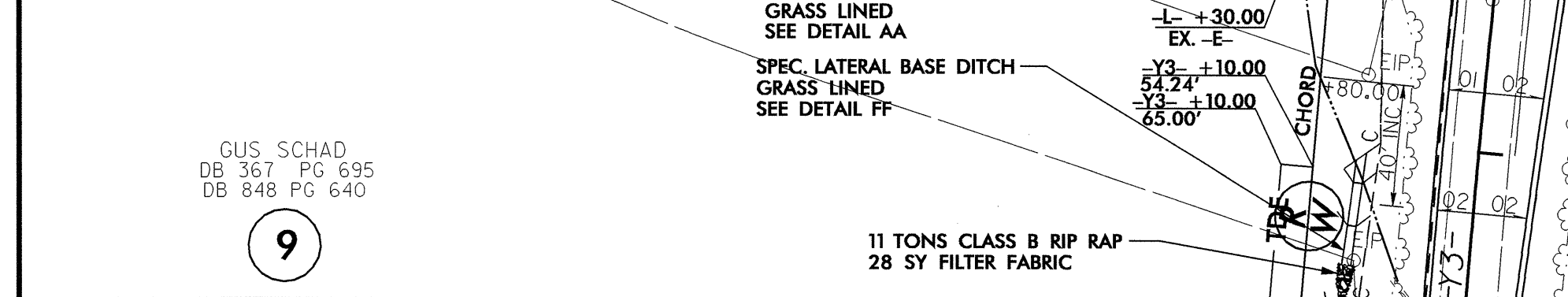
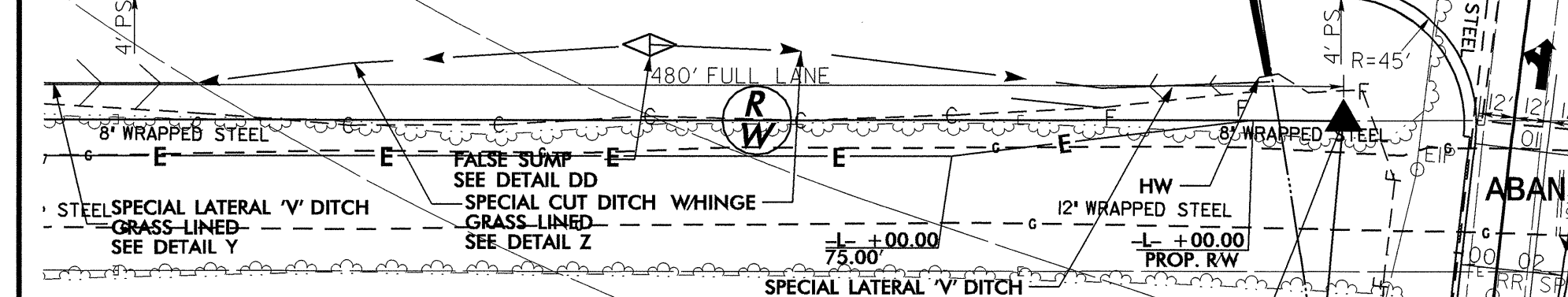
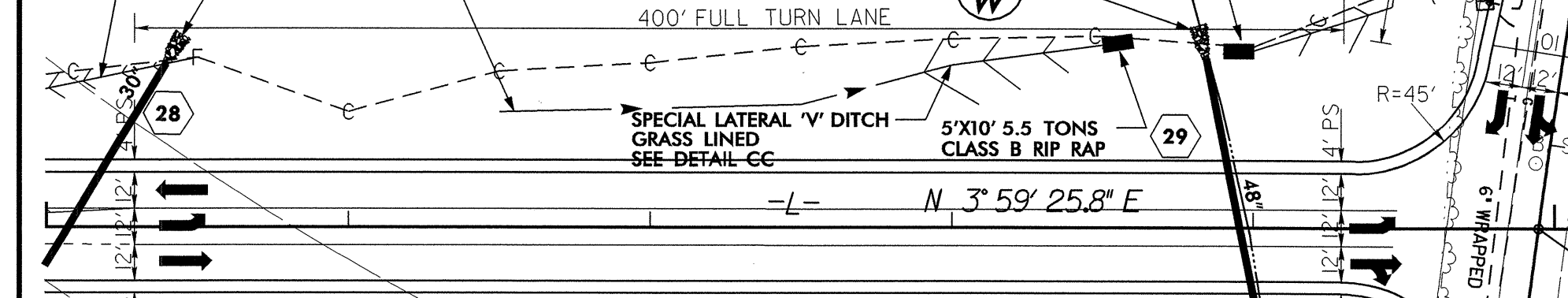
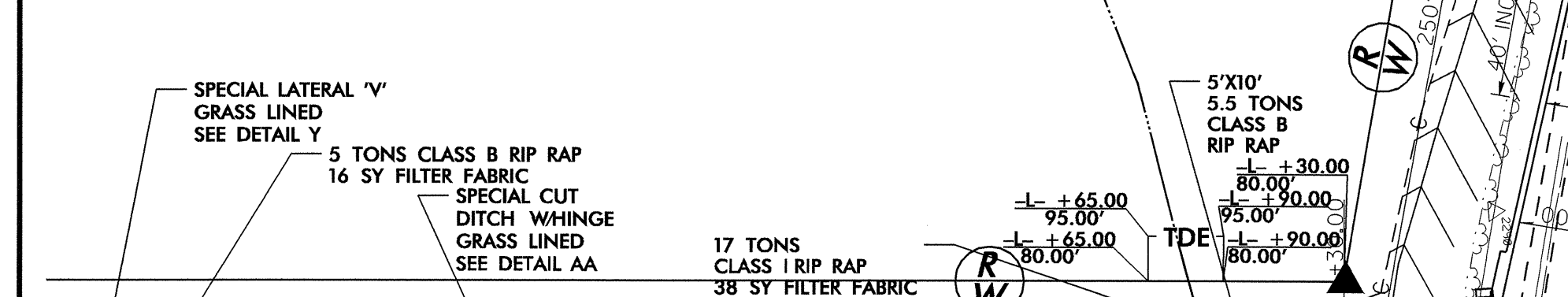
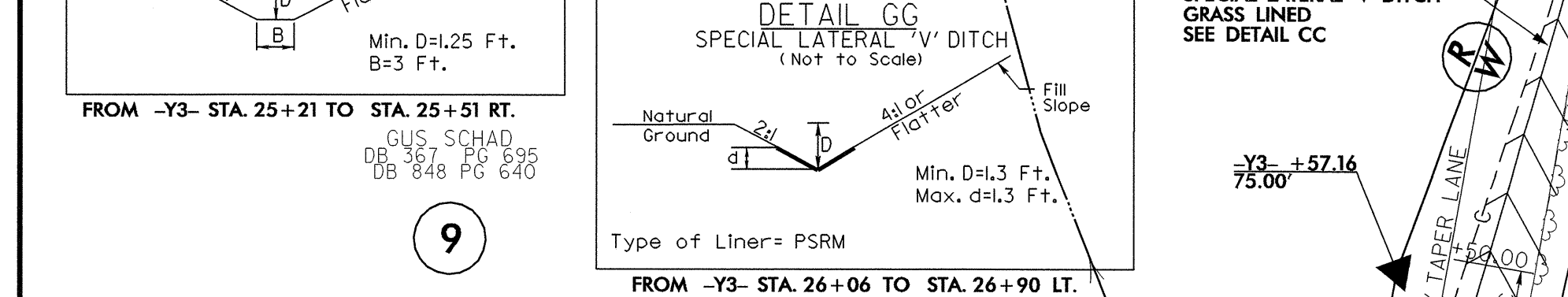
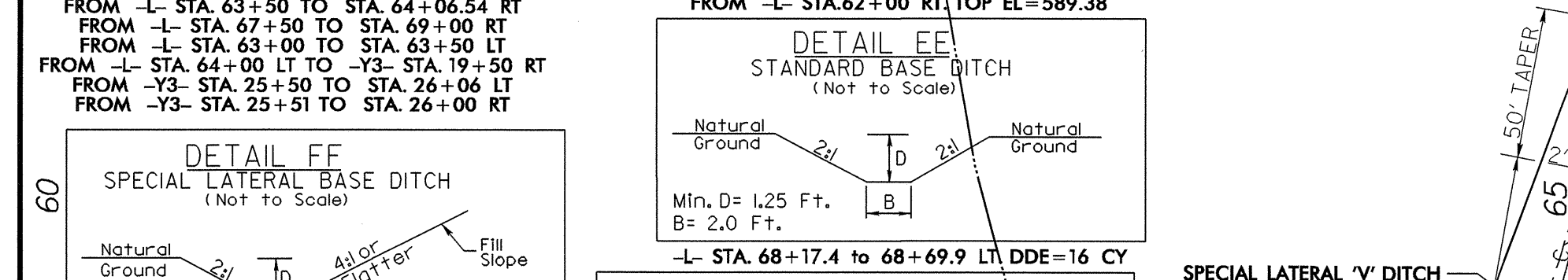
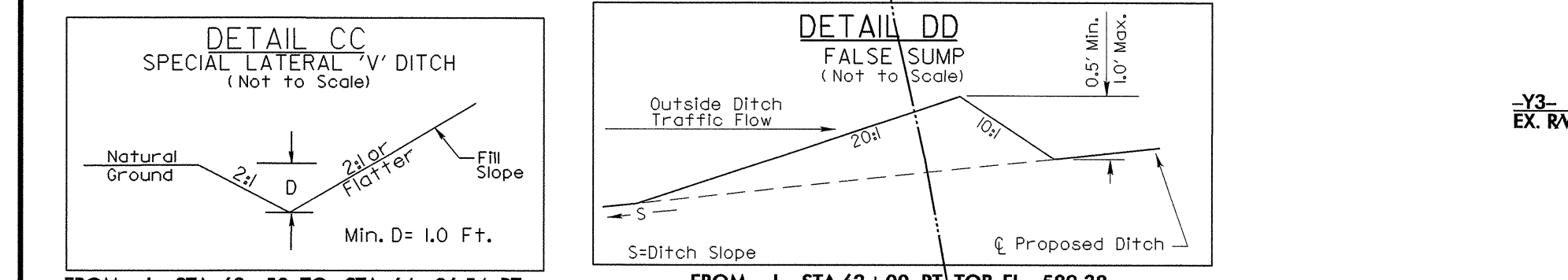
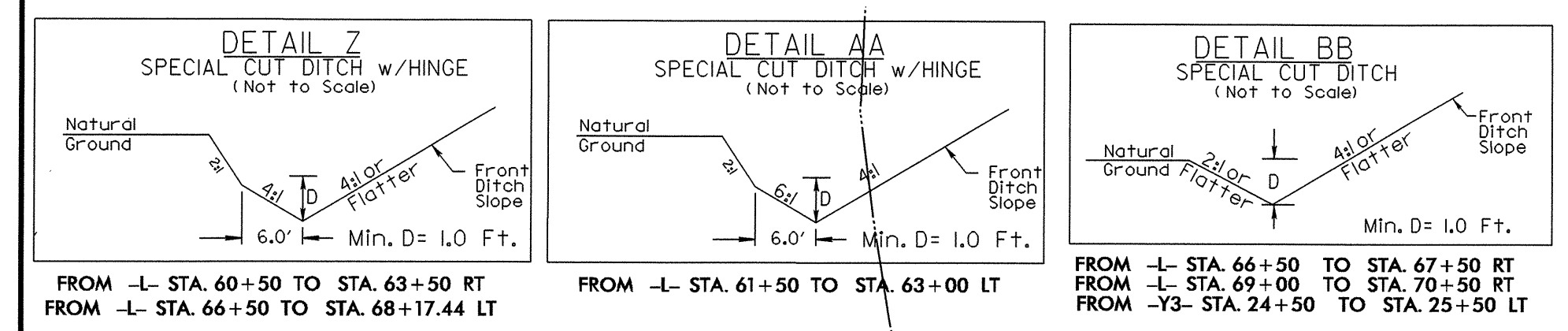
8
MICHAEL E. SNYDER
DB 327 PG 367
DB 592 PG 638
DB 761 PG 623

-L-
Is Sta 26+56.74 Pl Sta 32+91.79
s = 1' 54" 35.5" Δ = 2' 27" 23.7" (LT) Os = 1' 54" 35.5"
s = 200.00' D = 1' 54" 35.5" Ls = 200.00'
T = 133.34' L = 123.46' LT = 133.34'
T = 66.67' T = 568.39' ST = 66.67'
R = 3,000.00'

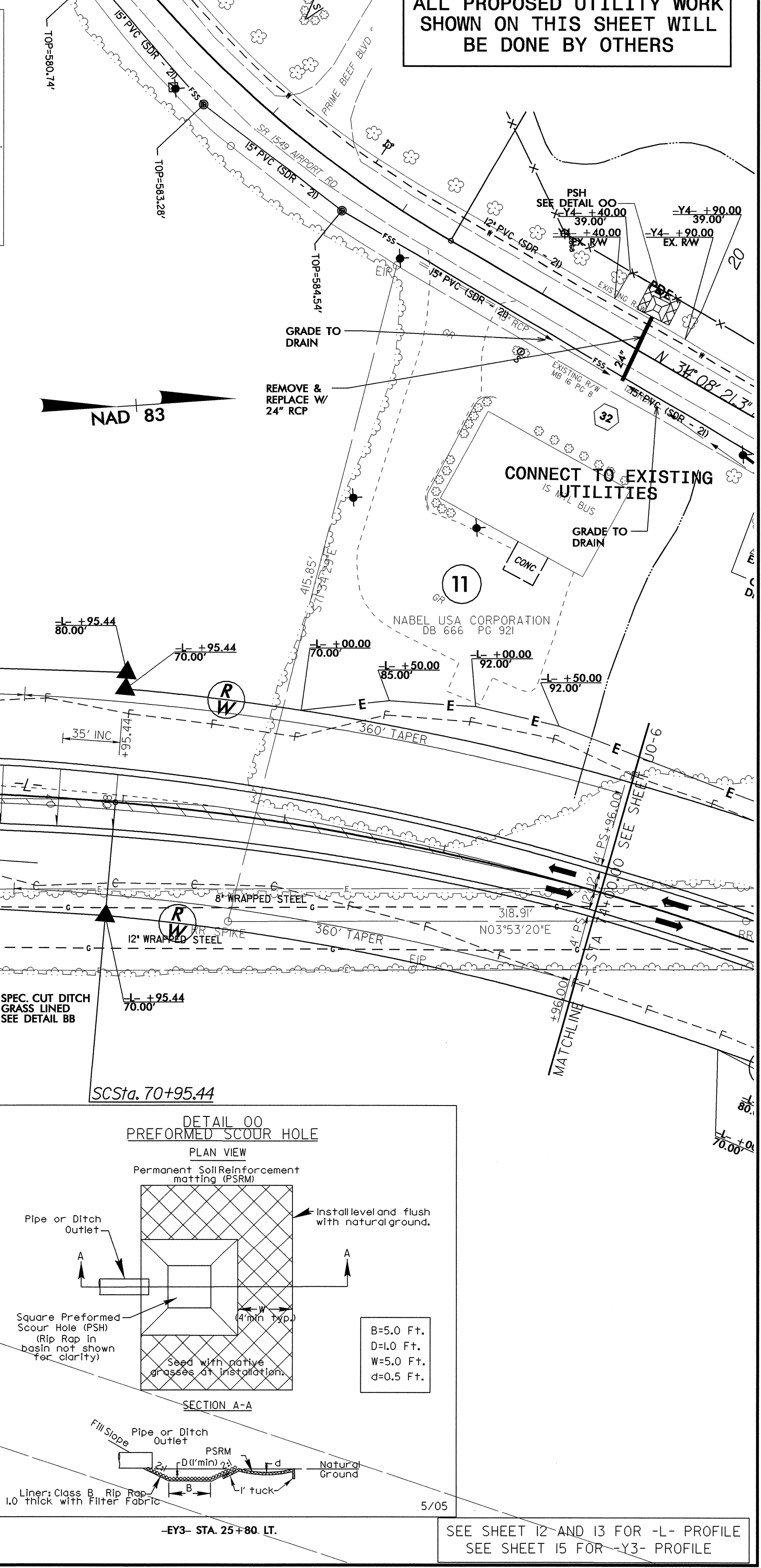
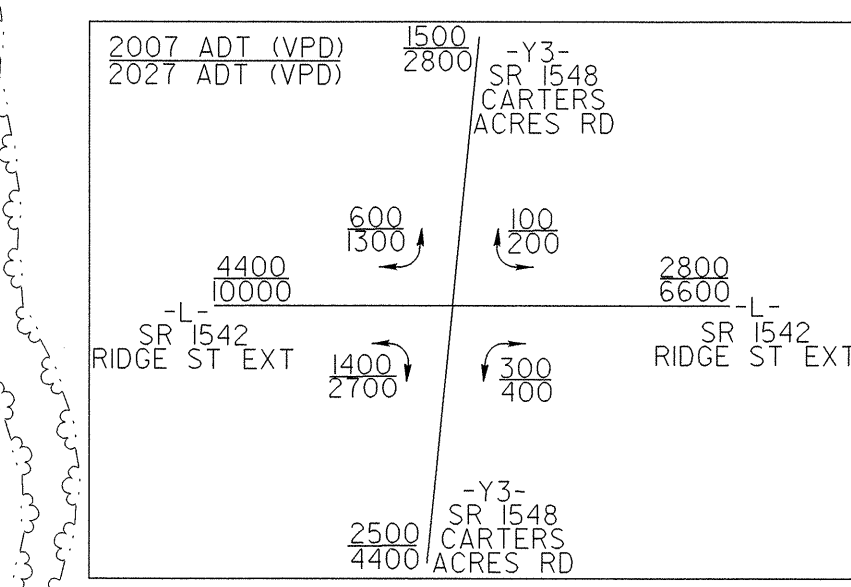
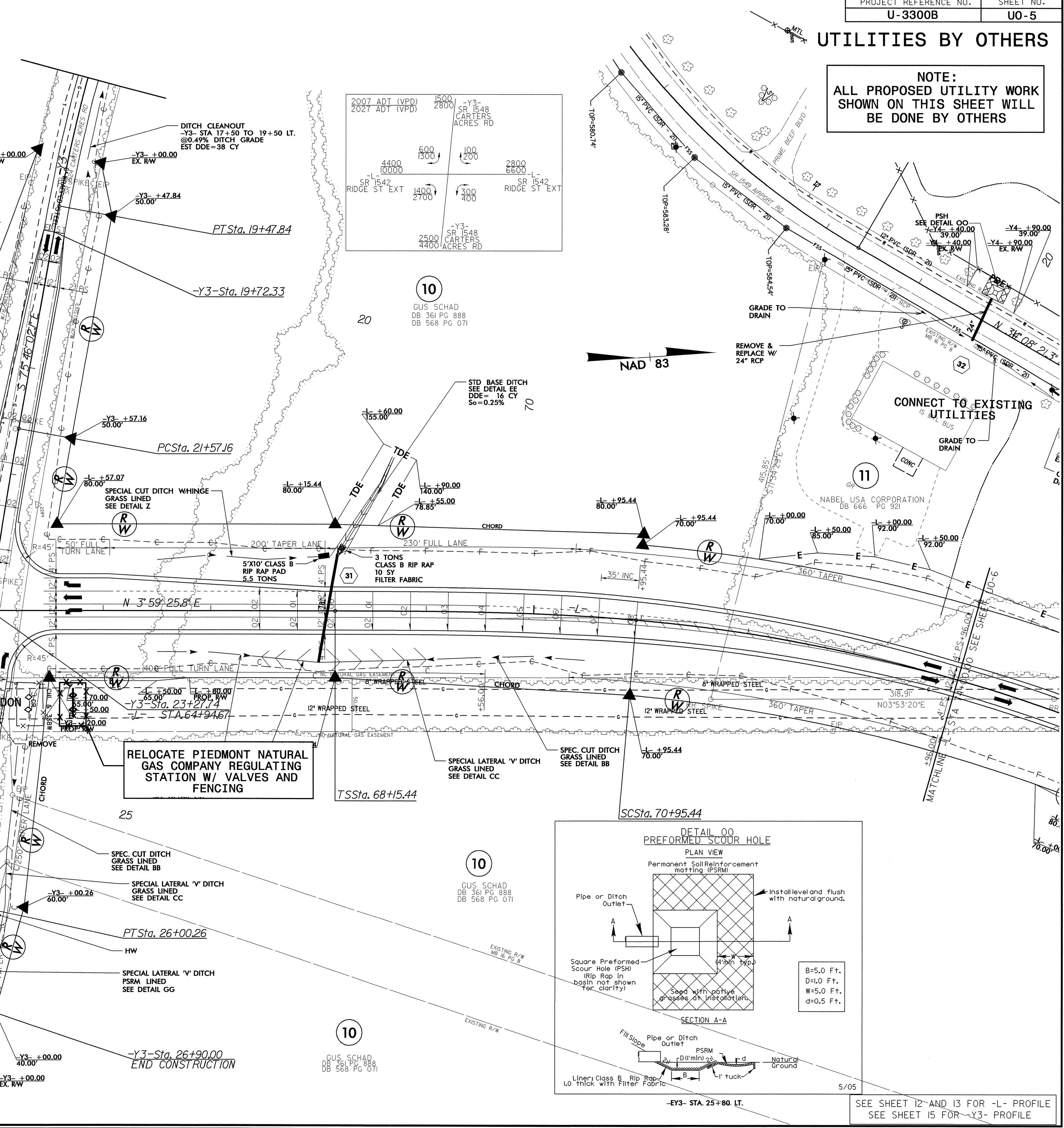
SEE SHEET 11 AND 12 FOR -L- PROFILE
SEE SHEET 14 FOR -Y2- PROFILE

UTILITIES BY OTHERS

NOTE:
ALL PROPOSED UTILITY WORK SHOWN ON THIS SHEET WILL BE DONE BY OTHERS



-L-		
Pls Sta 70+02.18 $\Theta_s = 5^\circ 00' 48.2''$ $L_s = 280.00'$ $LT = 186.74'$ $ST = 93.40'$	Pls Sta 77+79.88 $\Delta = 46^\circ 19' 13.1'' (RT)$ $D = 3^\circ 34' 51.6''$ $L = 1,293.51'$ $T = 684.44'$ $R = 1,600.00'$	Pls Sta 84+82.35 $\Theta_s = 5^\circ 00' 48.2''$ $L_s = 280.00'$ $LT = 186.74'$ $ST = 93.40'$
-Y3-		
Pls Sta 12+46.39 $\Delta = 20^\circ 50' 34.0'' (RT)$ $D = 7^\circ 32' 20.1''$ $L = 276.47'$ $T = 139.78'$ $R = 760.00'$	Pls Sta 17+71.30 $\Delta = 13^\circ 32' 58.7'' (LT)$ $D = 3^\circ 49' 11.0''$ $L = 354.73'$ $T = 178.20'$ $R = 1,500.00'$	Pls Sta 23+78.93 $\Delta = 6^\circ 20' 48.8'' (LT)$ $D = 1^\circ 25' 56.6''$ $L = 443.10'$ $T = 221.77'$ $R = 4,000.00'$



MICHAEL E. SNYDER
DB 327 PG 367
DB 592 PG 638
DB 761 PG 623

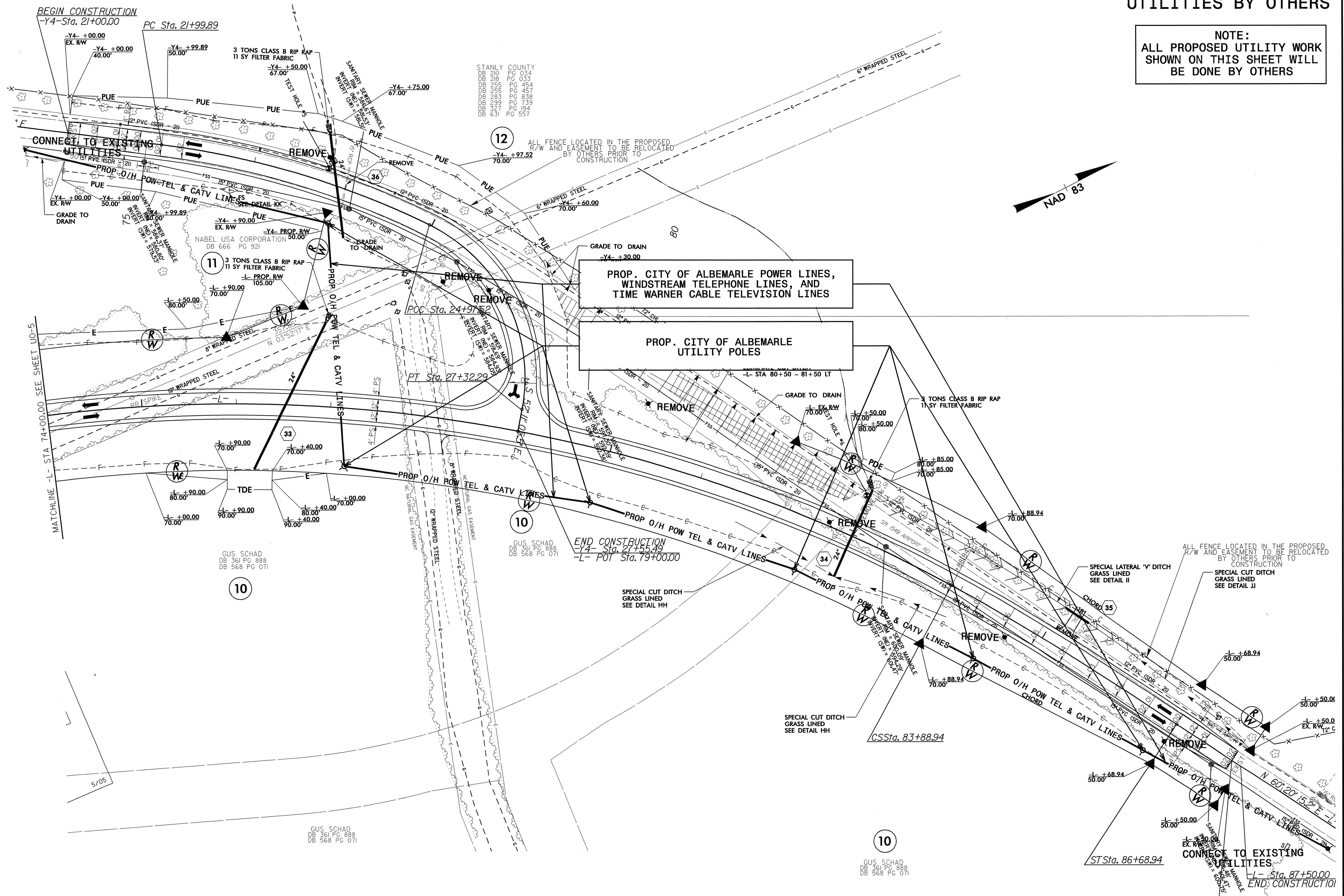
GUS SCHAD
DB 361 PG 888
DB 568 PG 071

GUS SCHAD
DB 361 PG 888
DB 568 PG 071

SEE SHEET 12 AND 13 FOR -L- PROFILE
SEE SHEET 15 FOR -Y3- PROFILE

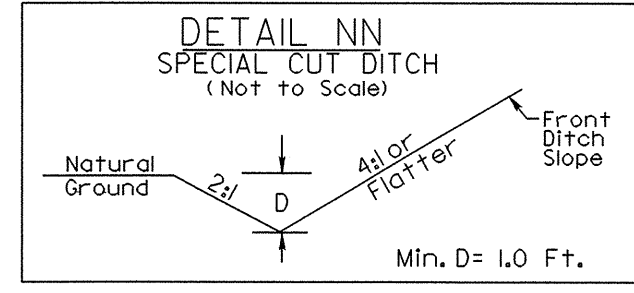
UTILITIES BY OTHERS

NOTE:
ALL PROPOSED UTILITY WORK SHOWN ON THIS SHEET WILL BE DONE BY OTHERS

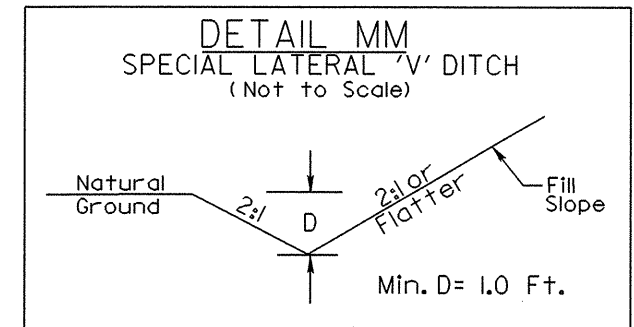


UTILITIES BY OTHERS

NOTE:
ALL PROPOSED UTILITY WORK SHOWN ON THIS SHEET WILL BE DONE BY OTHERS



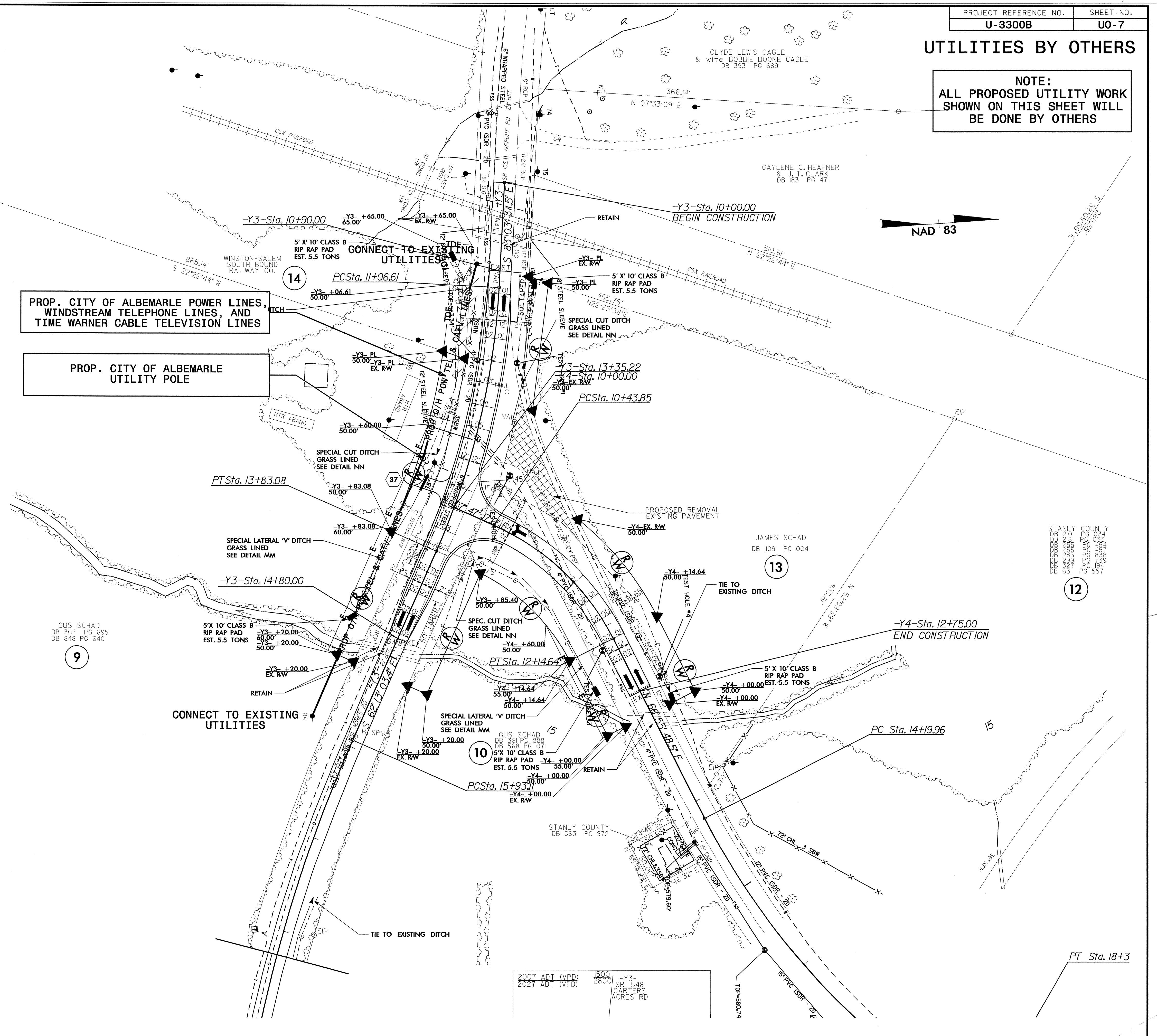
FROM -Y3- STA. 11+00 TO STA. 12+50 LT.
FROM -Y3- STA. 14+00 LT. TO -Y4- STA. 11+50 RT.
FROM -Y3- STA. 12+50 TO STA. 13+50 RT.



FROM -Y3- STA. 10+76 TO STA. 12+00 RT.
FROM -Y3- STA. 13+50 TO STA. 14+74 RT.
FROM -Y4- STA. 11+50 TO STA. 12+50 RT.

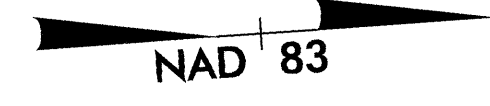
-Y3-	
PI Sta 12+46.39	PI Sta 17+71.30
$\Delta = 20^{\circ} 50' 34.0''$ (RT)	$\Delta = 13^{\circ} 32' 58.7''$ (LT)
D = 7' 32' 20.1"	D = 3' 49' 11.0"
L = 276.47'	L = 354.73'
T = 139.78'	T = 178.20'
R = 760.00'	R = 1,500.00'

-Y3-	-Y4-
PI Sta 23+78.93	PI Sta 11+32.73
$\Delta = 6^{\circ} 20' 48.8''$ (LT)	$\Delta = 39^{\circ} 08' 31.5''$ (RT)
D = 1' 25' 56.6"	D = 22' 55' 05.9"
L = 443.10'	L = 170.79'
T = 221.77'	T = 88.88'
R = 4,000.00'	R = 250.00'



PROP. CITY OF ALBEMARLE POWER LINES, WINDSTREAM TELEPHONE LINES, AND TIME WARNER CABLE TELEVISION LINES

PROP. CITY OF ALBEMARLE UTILITY POLE



STANLY COUNTY
PLAT 1000
DB 563 PG 972

2007 ADT (VPD) 1500
2027 ADT (VPD) 2800
-Y3-
SR 1548
CARTERS
ACRES RD