

GENERAL NOTES

CHANGES MAY BE REQUIRED WHEN PHYSICAL DIMENSIONS IN THE DETAIL DRAWINGS, STANDARD DETAILS AND ROADWAY DETAILS ARE NOT ATTAINABLE TO MEET FIELD CONDITIONS, OR RESULT IN DUPLICATE, OR UNDESIRE OVERLAPPING OF DEVICES. MODIFICATION MAY INCLUDE: MOVING, SUPPLEMENTING, COVERING OR REMOVAL OF DEVICES, AS DIRECTED BY THE ENGINEER.

THE FOLLOWING GENERAL NOTES APPLY AT ALL TIMES FOR THE DURATION OF THE CONSTRUCTION PROJECT, EXCEPT WHEN OTHERWISE NOTED IN THE PLAN, OR DIRECTED BY THE ENGINEER.

TRAFFIC PATTERN ALTERATIONS

- A) NOTIFY THE ENGINEER TWENTY ONE (21) CALENDAR DAYS PRIOR TO ANY TRAFFIC PATTERN ALTERATION.

SIGNING

- B) PROVIDE PERMANENT SIGNING.
- C) PROVIDE DETOUR SIGNING WITHIN AND OFF THE PROJECT LIMITS.
- D) COVER OR REMOVE ALL DETOUR SIGNS WITHIN AND OFF THE PROJECT LIMITS WHEN A DETOUR IS NOT IN OPERATION.
- E) ENSURE ALL NECESSARY SIGNING IS IN PLACE PRIOR TO ALTERING ANY TRAFFIC PATTERN.

TRAFFIC CONTROL DEVICES

- F) PLACE TYPE III BARRICADES, WITH "ROAD CLOSED" SIGN R11-2 ATTACHED, OF SUFFICIENT LENGTH TO CLOSE ENTIRE ROADWAY.

PAVEMENT MARKINGS AND MARKERS

- G) INSTALL PAVEMENT MARKINGS ON THE FINAL SURFACE AS FOLLOWS:

ROAD NAME	MARKING	MARKER
SR 1321 (CAPEL MILL RD)	THERMO	PERMANENT RAISED

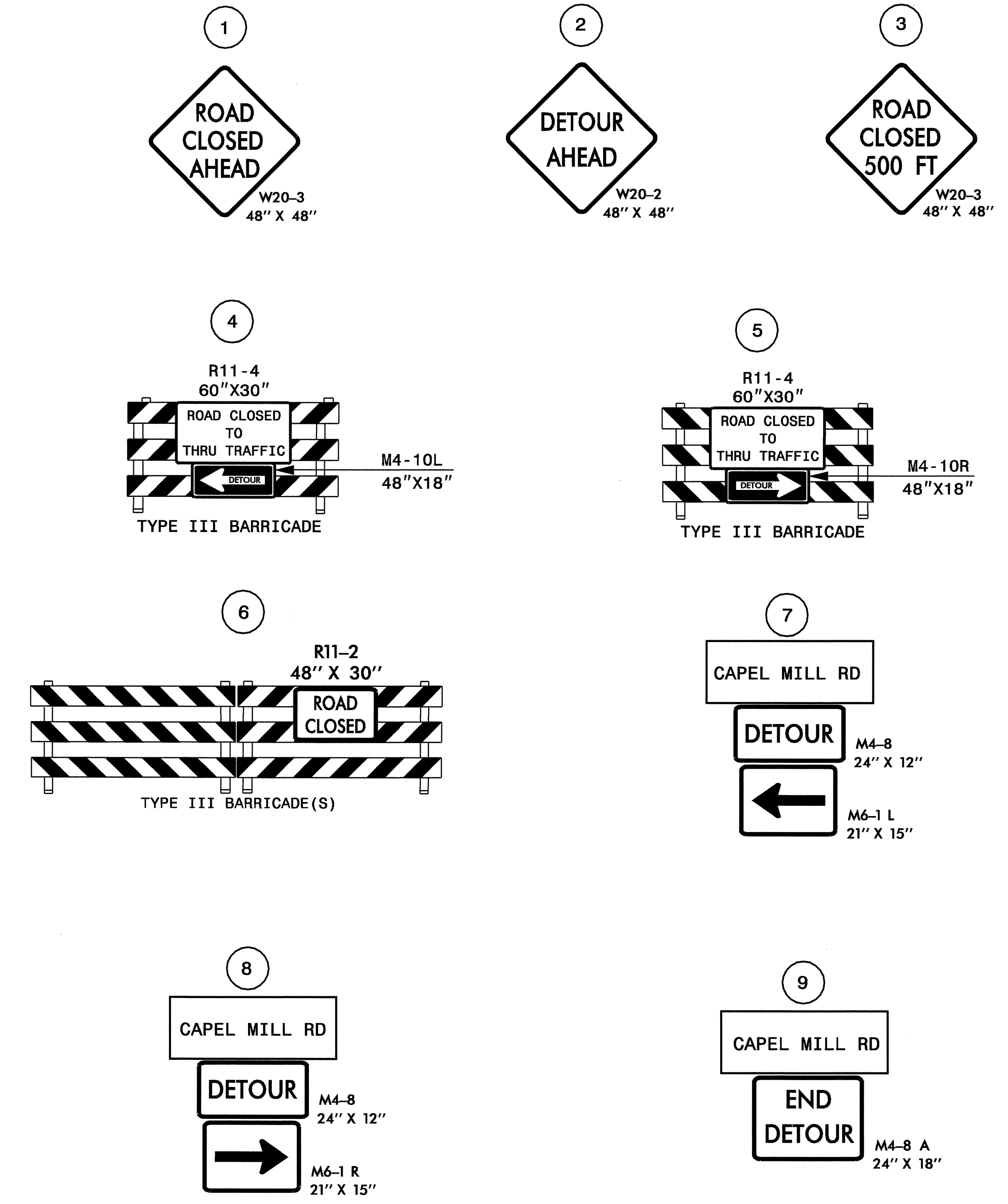
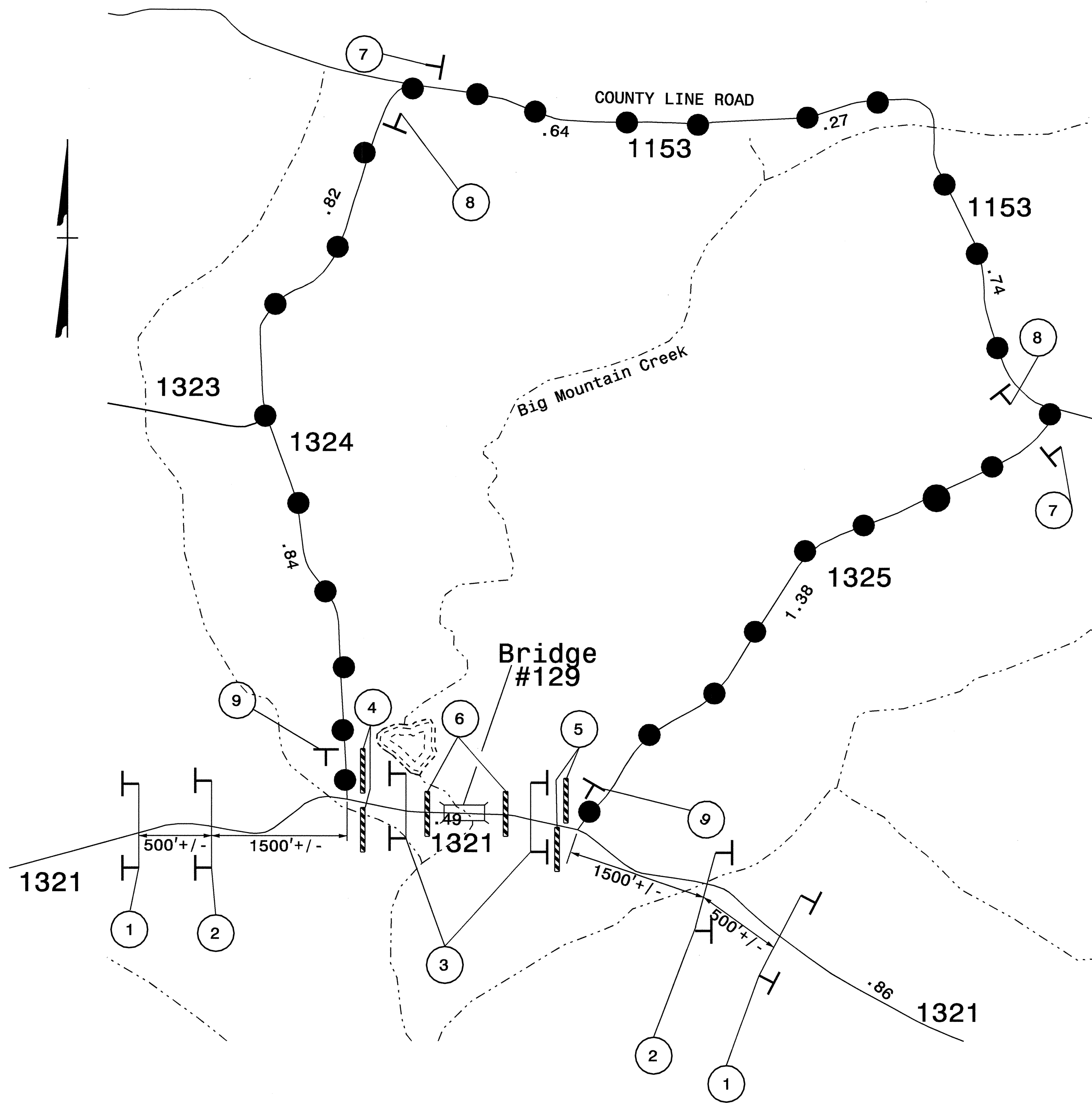
- H) TIE PROPOSED PAVEMENT MARKING LINES TO EXISTING PAVEMENT MARKING LINES.

PHASING

- STEP 1: USING RSD 1101.03, SHEET 1 OF 9, AND SHEETS TCP-3 AND SD-1, CLOSE SR 1321 (CAPEL MILL ROAD) AND DETOUR TRAFFIC TO OFFSITE DETOUR.
- STEP 2: AWAY FROM TRAFFIC, PERFORM THE FOLLOWING:
 1. REMOVE EXISTING STRUCTURE. SEE ROADWAY PLANS.
 2. CONSTRUCT PROPOSED STRUCTURE AND APPROACHES UP TO AND INCLUDING FINAL LAYER OF SURFACE COURSE FROM -L- STA.12+50 +/- TO -L- STA. 20+50 +/- . SEE ROADWAY PLANS.
 3. PLACE FINAL PAVEMENT MARKING (THERMOPLASTIC) AND FINAL PAVEMENT MARKERS (PERMANENT RAISED) FROM -L- STA. 12+50 +/- TO -L- STA. 20+50 +/-, AND TIE TO EXISTING PAVEMENT MARKING.
- STEP 3: REMOVE ALL TEMPORARY WORK ZONE TRAFFIC CONTROL DEVICES AND ALL DETOUR SIGNING. OPEN SR 1321 (CAPEL MILL RD.) TO TWO-LANE, TWO-WAY TRAFFIC PATTERN.

20-NOV-2008 08:17
 \\dot\dfsroot\proj\ppr\projects-b\4247\traffic\trafficcontrol\top\b-4247-rc-top_02.dgn
 anpar\ker2 AT WZTC24741

APPROVED: _____	DATE: _____	GENERAL NOTES AND PHASING	
	SCALE: NTS		REVISIONS
	DATE: MAY 08		
	DWG. BY: JLF		
	DESIGN BY: JLF		
REVIEWED BY: JLP			



NOTE: OMIT 2ND SET OF "ROAD CLOSED AHEAD" SIGNS AND "ROAD CLOSED 1000 FT" SIGNS LOCATED BETWEEN DETOUR POINT AND PROJECT LIMITS (SHOWN IN ROADWAY STANDARD DRAWING 1101.03, SHEET 1 OF 9), FOR BOTH ENDS OF ROAD CLOSURE.

ALL SIGNS AND BARRICADES ARE CONTRACTOR INSTALLED.

20-NOV-2008 08:18
\\dot\dfsroot\proj\proj\projects-b\4247\traffic\trafficcontrol\top\top-3_top-03.dgn
amarker2 AT WZTC24474

●●●● OFF-SITE DETOUR

APPROVED: _____ DATE: _____	DETOUR ROUTE AND BARRICADE PLACEMENT										
	SCALE: NONE										
	DATE: MAY 08		<table border="1"> <tr> <th colspan="2">REVISIONS</th> </tr> <tr> <td> </td> <td> </td> </tr> <tr> <td> </td> <td> </td> </tr> <tr> <td> </td> <td> </td> </tr> </table>	REVISIONS							
	REVISIONS										
DWG. BY: JLF	<table border="1"> <tr> <td>CADD FILE</td> </tr> </table>	CADD FILE									
CADD FILE											
DESIGN BY: JLF											
REVIEWED BY: JLP											