

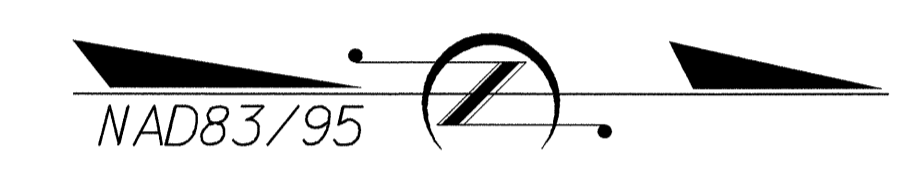
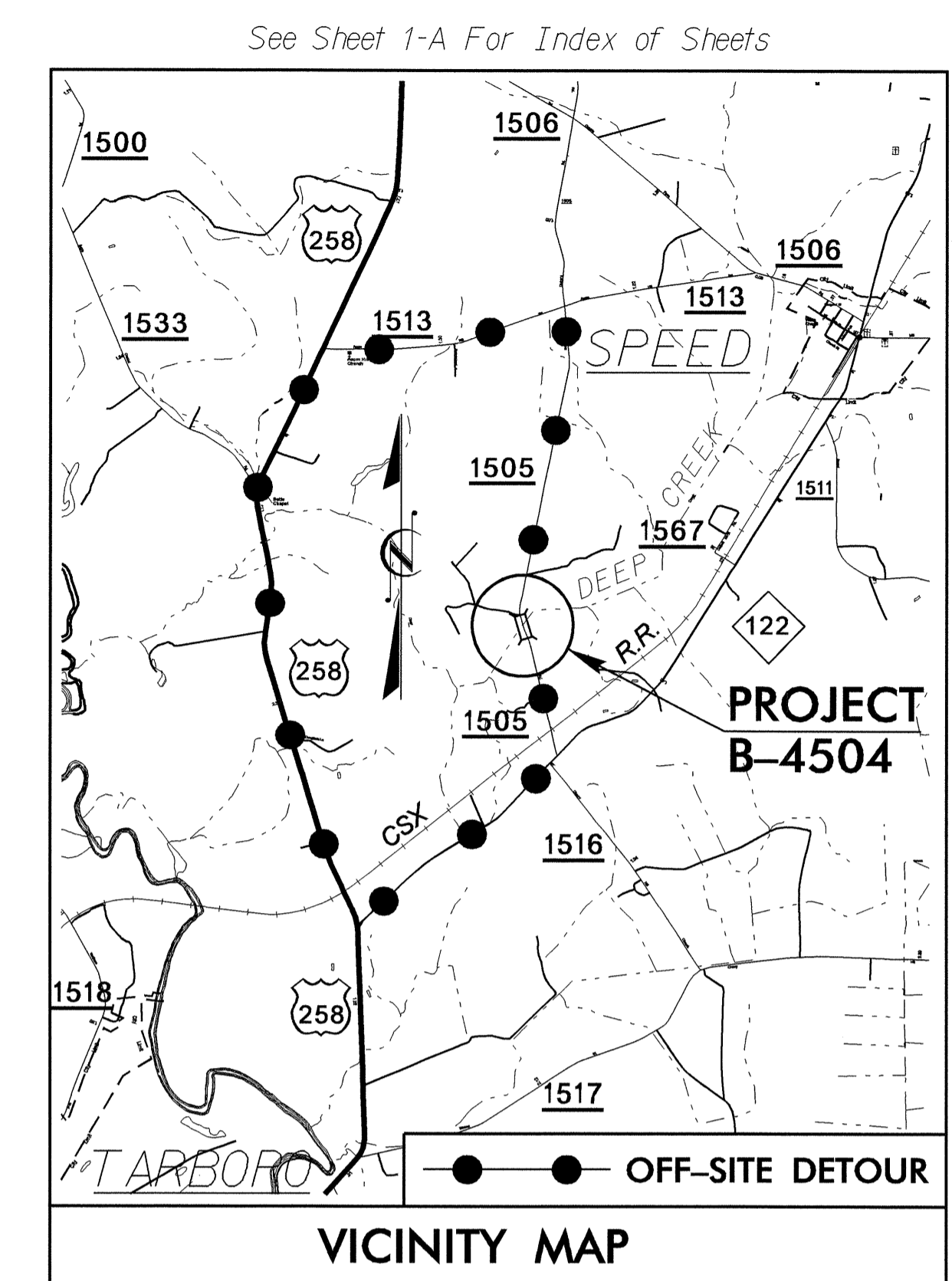
T.I.P. NO.	SHEET NO.
B-4504	UO-1

STATE OF NORTH CAROLINA
DIVISION OF HIGHWAYS

**UTILITIES BY OTHERS PLANS
EDGEcombe COUNTY**

**LOCATION: BRIDGE NO. 52 OVER DEEP CREEK AND
APPROACHES ON SR 1505 (DICKENS ROAD)**

TYPE OF WORK: UTILITIES

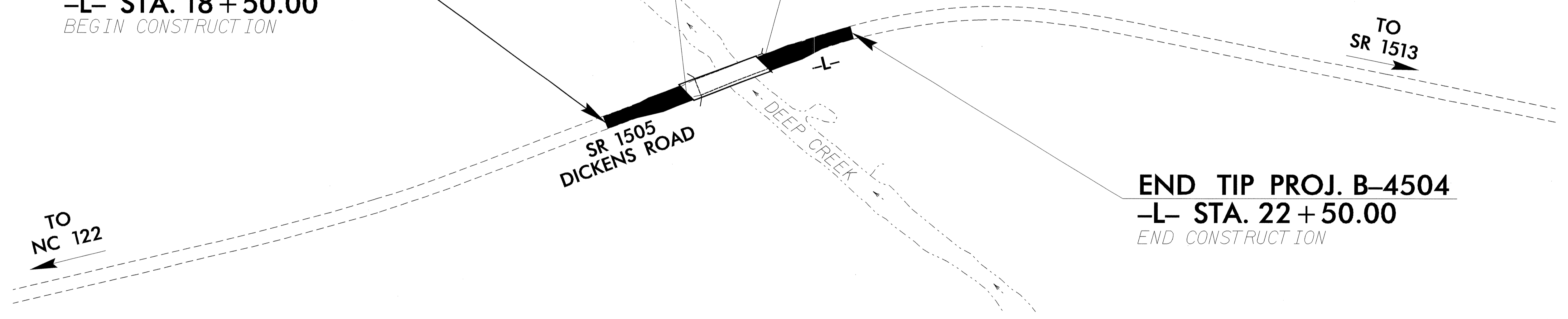


TIP B-4504

BEGIN TIP PROJ. B-4504
-L- STA. 18+50.00
BEGIN CONSTRUCTION

BEGIN BRIDGE
-L- STA. 19+86.50

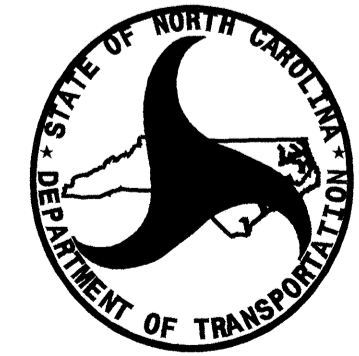
END BRIDGE
-L- STA. 21+06.50



END TIP PROJ. B-4504
-L- STA. 22+50.00
END CONSTRUCTION

INDEX OF SHEETS	
SHEET NO.	DESCRIPTION
UO-1	TITLE SHEET
UO-2	UTILITY BY OTHERS PLAN SHEETS

UTILITY OWNERS ON PROJECT
(1) EMBARQ (TELEPHONE)



PREPARED IN THE OFFICE OF:
**DIVISION OF HIGHWAYS
UTILITIES ENGINEERING
SECTION**

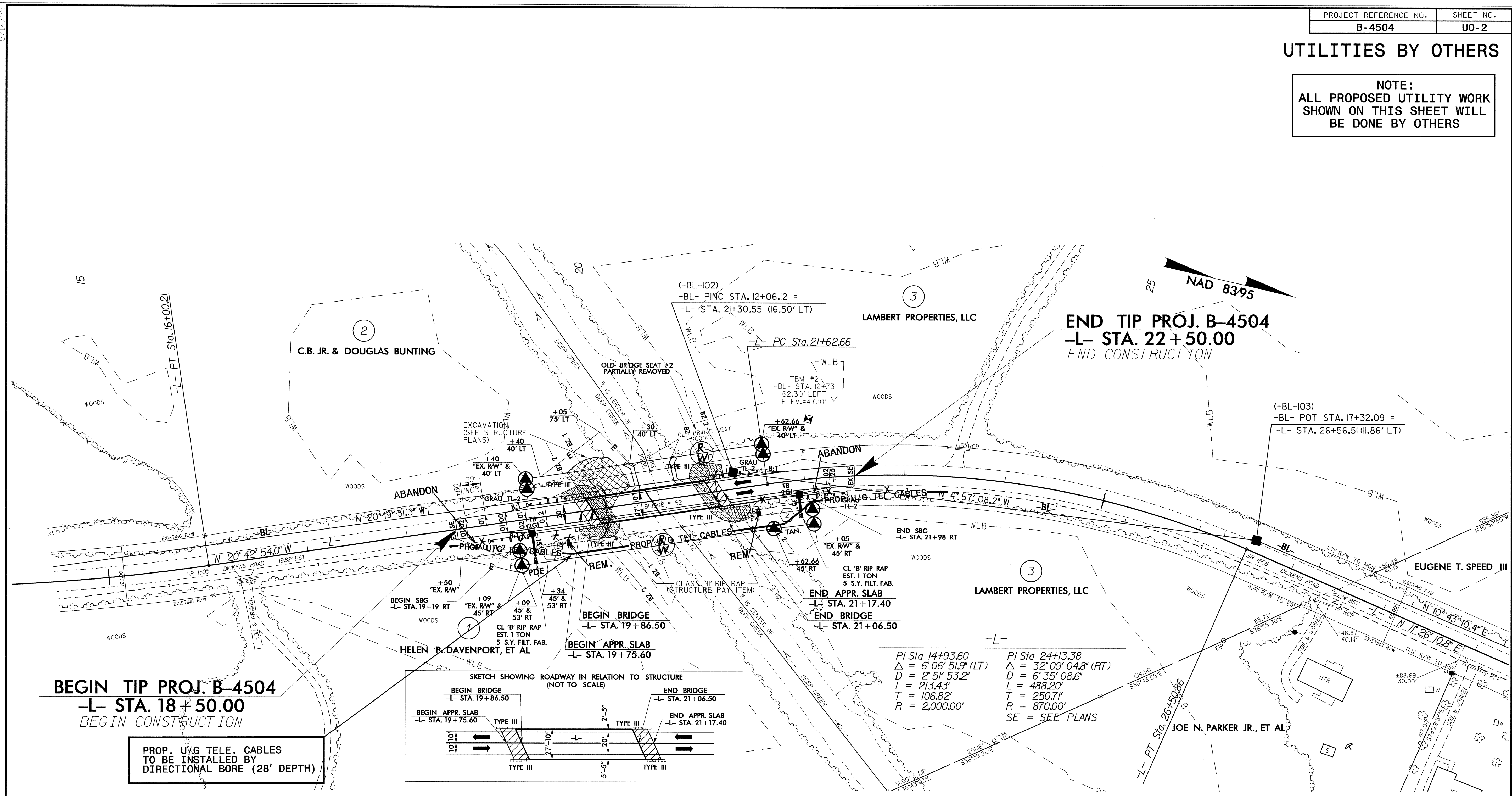
1591 MAIL SERVICES CENTER
RALEIGH, NC 27699-1591
PHONE (919) 250-4128
FAX (919) 250-4119

<u>Roger Worthington, P.E.</u>	UTILITIES SECTION ENGINEER
<u>Steve McKee, P.E.</u>	UTILITIES SQUAD LEADER PROJECT ENGINEER
<u>Alonza Yancey</u>	UTILITIES PROJECT DESIGNER

19: NOV-2008 09:49 I:\North\14485\14485.ctb\proj\b-4504-ut_title_uol_psh.dgn \$\$\$USERNAME\$\$\$

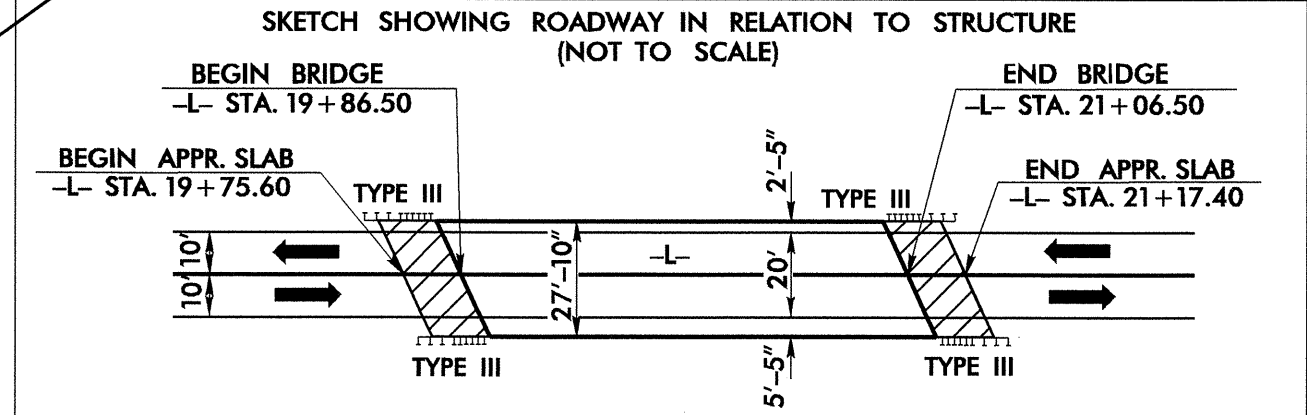
UTILITIES BY OTHERS

NOTE:
ALL PROPOSED UTILITY WORK
SHOWN ON THIS SHEET WILL
BE DONE BY OTHERS



BEGIN TIP PROJ. B-4504
-L- STA. 18+50.00
BEGIN CONSTRUCTION

PROP. U/G TELE. CABLES
TO BE INSTALLED BY
DIRECTIONAL BORE (28' DEPTH)



END TIP PROJ. B-4504
-L- STA. 22+50.00
END CONSTRUCTION

(-BL-I03)
-BL- POT STA. 17+32.09 =
-L- STA. 26+56.51 (11.86' LT)

5/14/99
21-NOV-2008 08:49
P:\PROJECTS\1504\1504.dwg
sh41_uo01 by others sh41_uo01