

TIP PROJECT: B-4097

STATE OF NORTH CAROLINA
 DIVISION OF HIGHWAYS
 PLAN FOR PROPOSED
 HIGHWAY EROSION CONTROL
DAVIDSON COUNTY

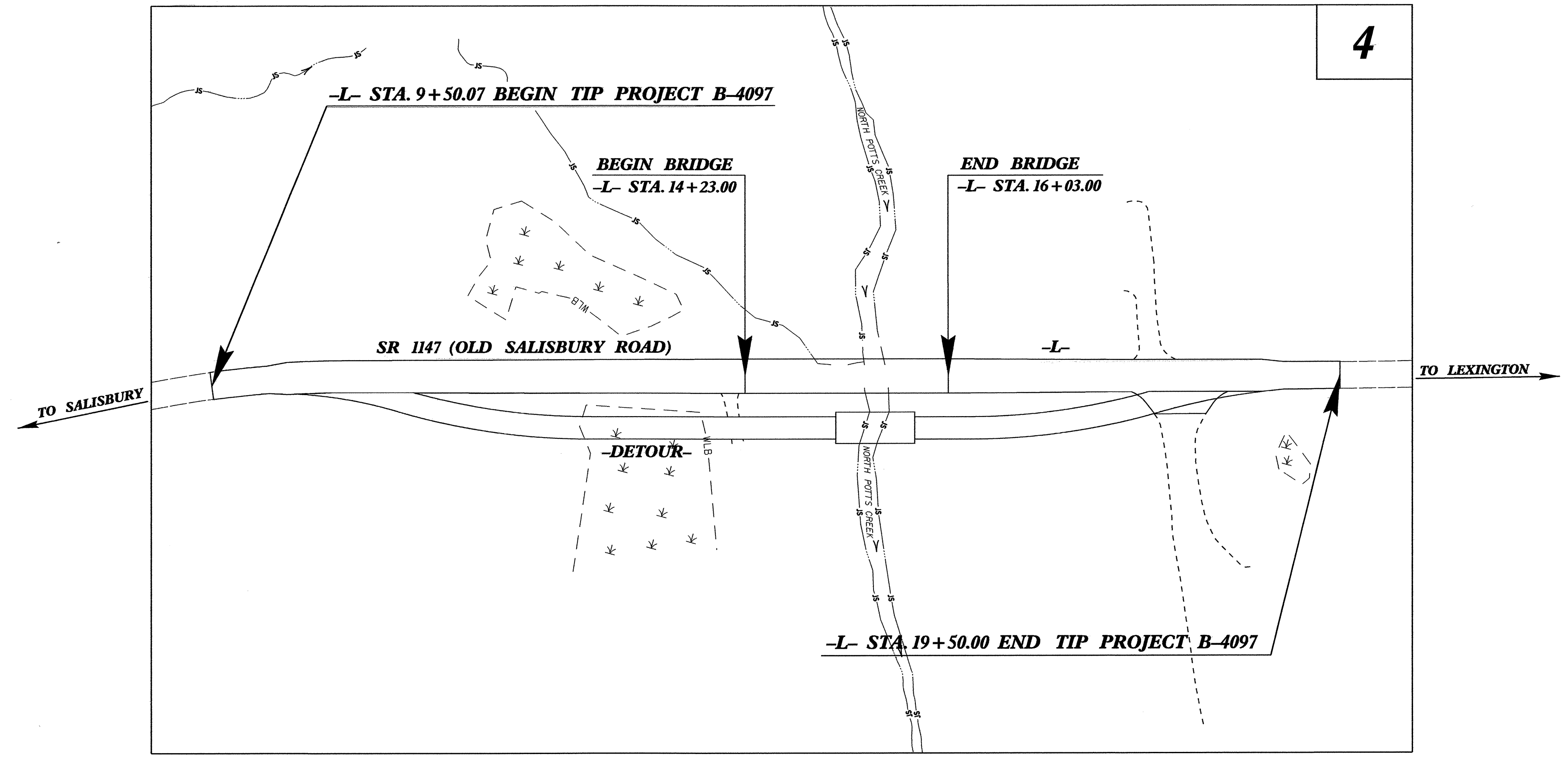
**LOCATION: BRIDGE NO. 405 OVER NORTH POTTS CREEK AND
 APPROACHES ON SR 1147 (OLD SALISBURY ROAD)
 TYPE OF WORK: GRADING, PAVING, DRAINAGE, AND STRUCTURE**

STATE	STATE PROJECT REFERENCE NO.	SHEET NO.	TOTAL SHEETS
N.C.	B-4097	EC-1	
STATE PROJ. NO.	F.A. PROJ. NO.	DESCRIPTION	

EROSION AND SEDIMENT CONTROL MEASURES

Std. #	Description	Symbol
1630.03	Temporary Silt Ditch	TD
1630.05	Temporary Diversion	TD
1605.01	Temporary Silt Fence	III III III
1606.01	Special Sediment Control Fence	△△△△△△△△
1622.01	Temporary Berms and Slope Drains	—▲—▲—▲—▲—
1630.01	Riser Basin	○
	Silt Basin Type B	▨
1633.01	Temporary Rock Silt Check Type-A	▨
	Temporary Rock Silt Check Type-B	▶
	Wattle	—○—
1634.01	Temporary Rock Sediment Dam Type-A	▨
1634.02	Temporary Rock Sediment Dam Type-B	▨
1635.01	Rock Pipe Inlet Sediment Trap Type-A	⊂
1635.02	Rock Pipe Inlet Sediment Trap Type-B	⊂
1630.04	Stilling Basin	▭
1630.06	Special Stilling Basin	▭
Rock Inlet Sediment Trap:		
1632.01	Type A	A
1632.02	Type B	B
1632.03	Type C	C
	Skimmer Basin	▭
	Tiered Skimmer Basin	▭
	Infiltration Basin	▭

**THIS PROJECT CONTAINS
 EROSION CONTROL PLANS
 FOR CLEARING AND
 GRUBBING PHASE OF
 CONSTRUCTION.**



GRAPHIC SCALE

0

 PLANS

0

 PROFILE (HORIZONTAL)

0

 PROFILE (VERTICAL)

ROADSIDE ENVIRONMENTAL UNIT
 DIVISION OF HIGHWAYS
 STATE OF NORTH CAROLINA

Prepared In the Office of:
ROADSIDE ENVIRONMENTAL UNIT
 1 South Wilmington St.
 Raleigh, NC 27611
2006 STANDARD SPECIFICATIONS

Roadway Standard Drawings

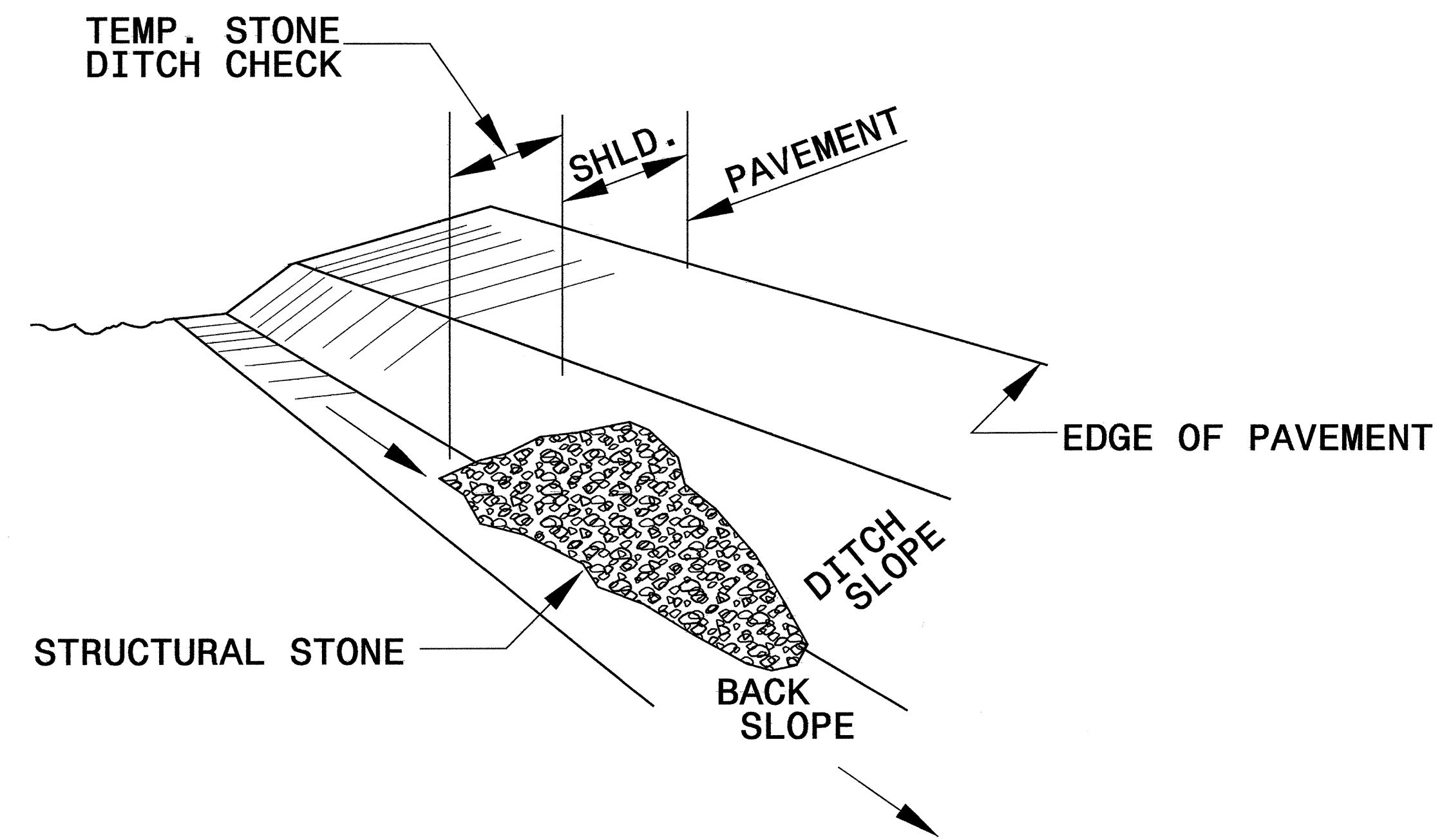
The following roadway english standards as appear in "Roadway Standard Drawings"- Roadway Design Unit - N. C. Department of Transportation - Raleigh, N. C., dated July 18, 2006 and the latest revision thereto are applicable to this project and by reference hereby are considered a part of these plans.

1605.01 Temporary Silt Fence	1630.05 Temporary Diversion
1606.01 Special Sediment Control Fence	1632.03 Rock Inlet Sediment Trap Type C
1607.01 Gravel Construction Entrance	1633.01 Temporary Rock Silt Check Type A
1622.01 Temporary Berms and Slope Drains	

20-NOV-2008 11:25 AM P:\PROJECTS\B-4097.ec.tsh.dgn

PROJECT REFERENCE NO. <i>B-4097</i>	SHEET NO. <i>EC-2</i>
RW SHEET NO.	
ROADWAY DESIGN ENGINEER	HYDRAULICS ENGINEER

TEMPORARY ROCK SILT CHECK TYPE 'B' DETAIL

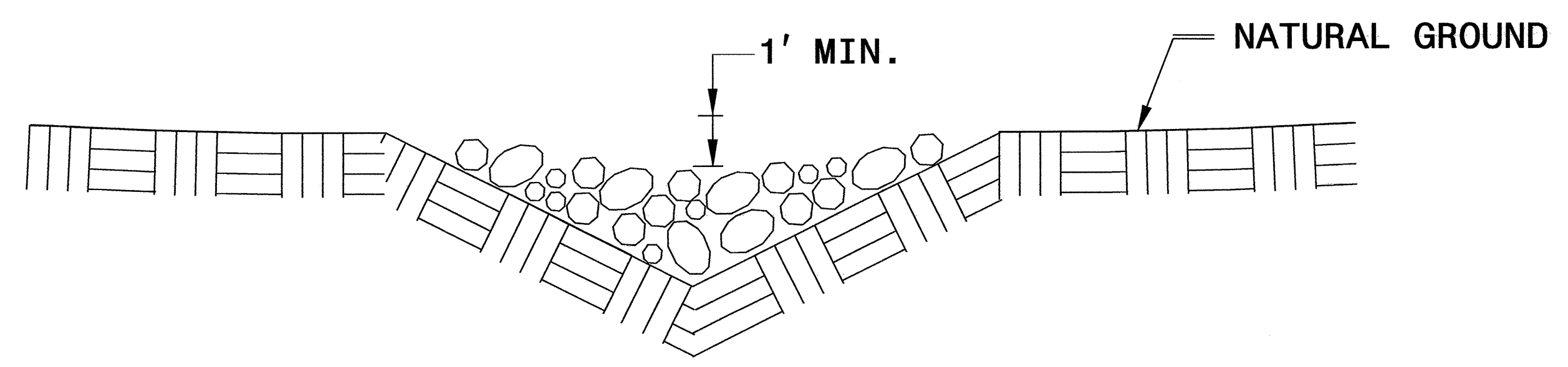


ISOMETRIC VIEW

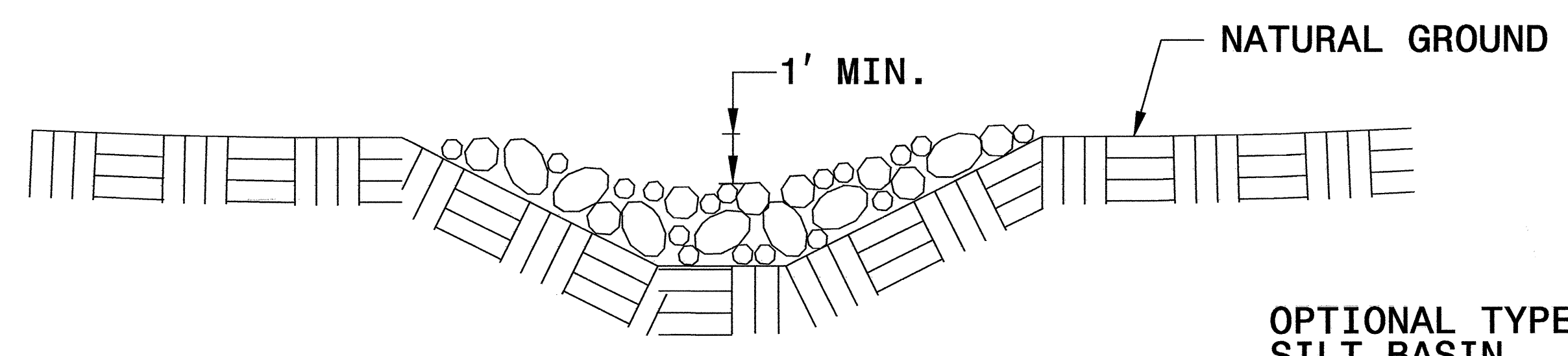
NOTES:

USE CLASS 'B' EROSION CONTROL STONE FOR STRUCTURAL STONE.

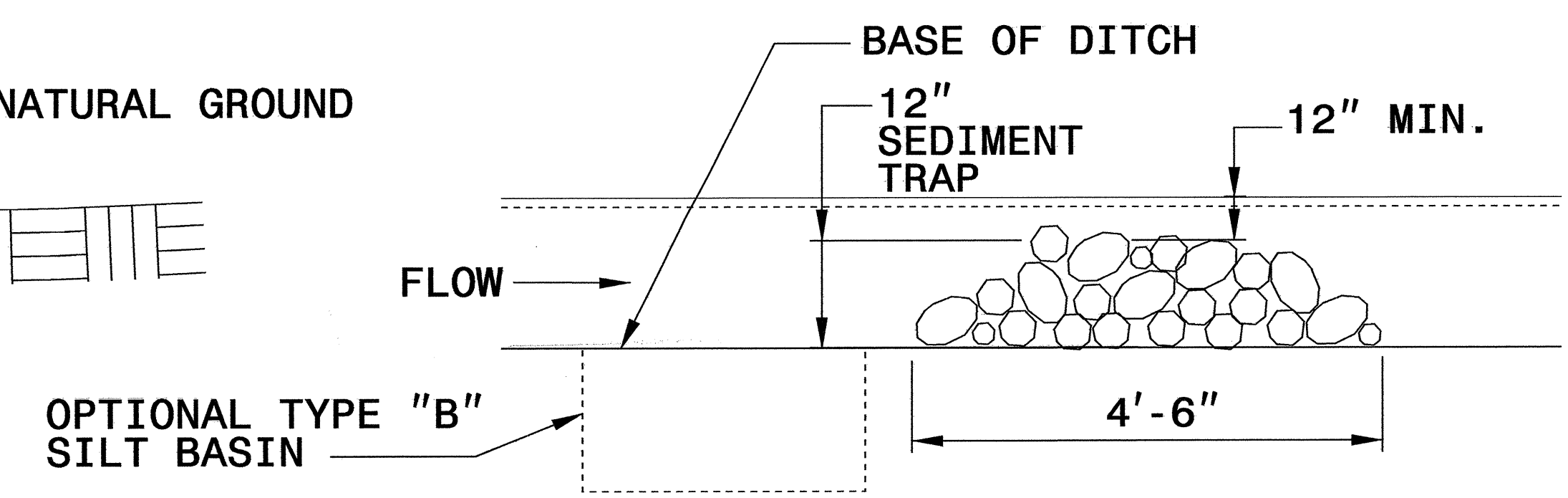
THE ENGINEER MAY DIRECT THE OPTION OF CLASS "A" STONE FOR SITES HAVING LESS THAN ONE (1) ACRE DRAINAGE AREA AND A DITCH GRADE LESS THAN 3%.



CROSS SECTION VEE DITCH



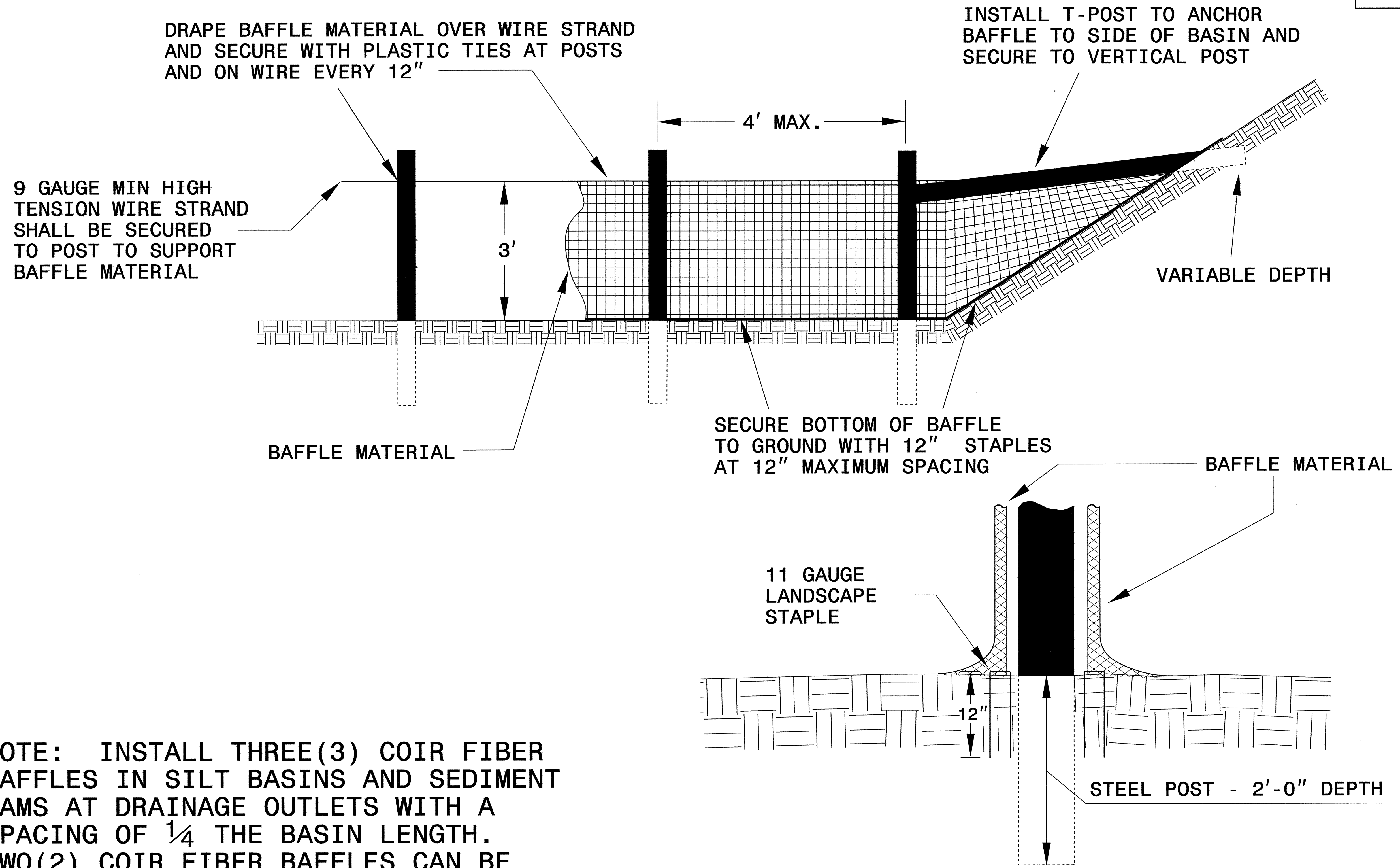
CROSS SECTION TRAPEZOIDAL DITCH



ELEVATION VIEW

PROJECT REFERENCE NO.	SHEET NO.
B-4097	EC-2A
RW SHEET NO.	
ROADWAY DESIGN ENGINEER	HYDRAULICS ENGINEER

COIR FIBER BAFFLE DETAIL

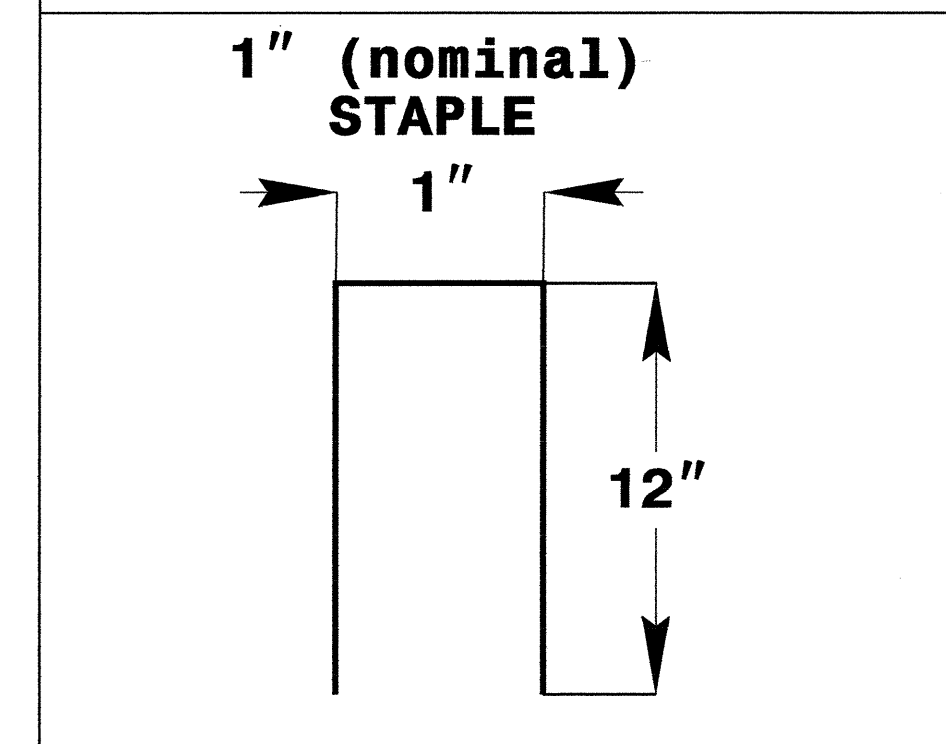
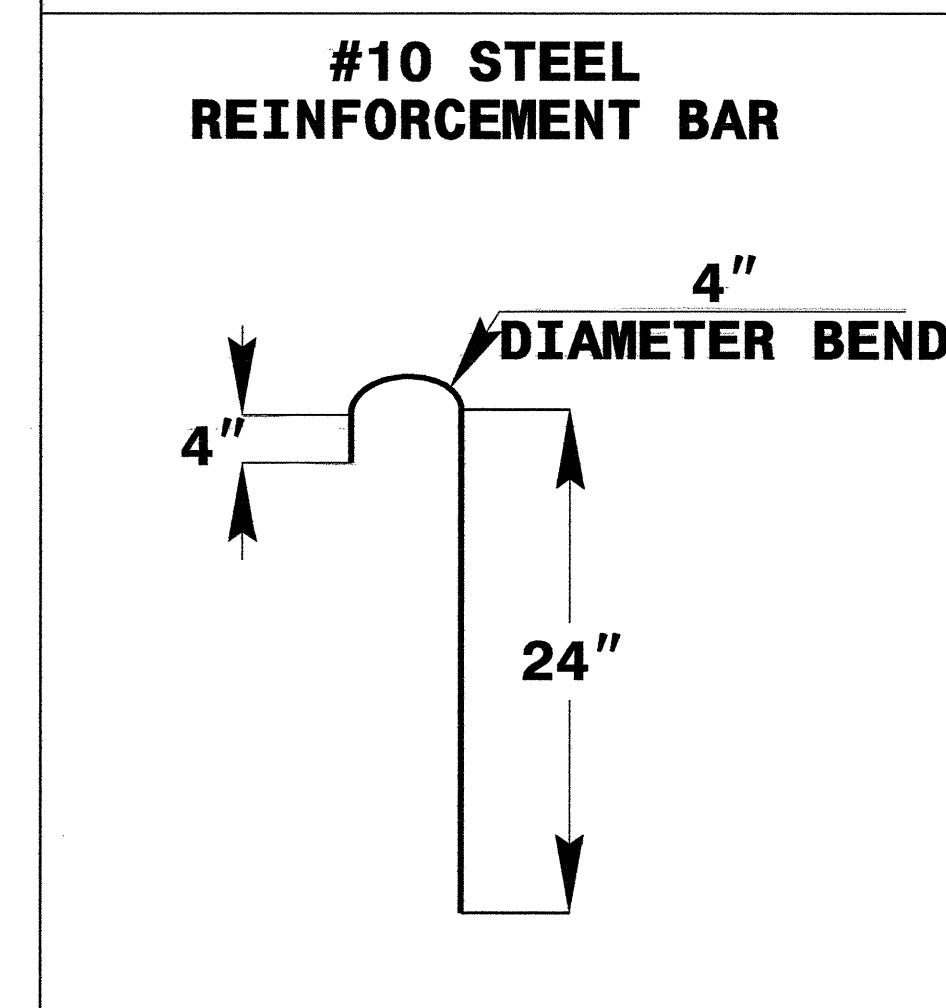
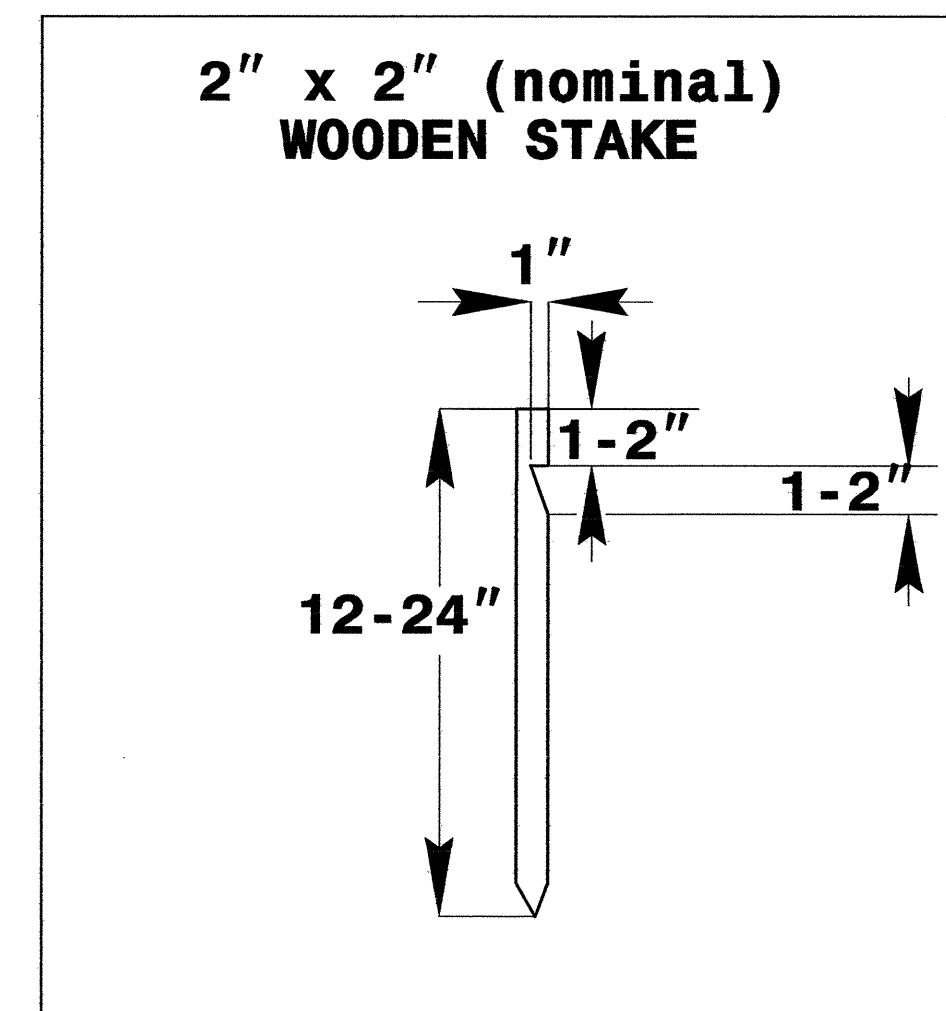
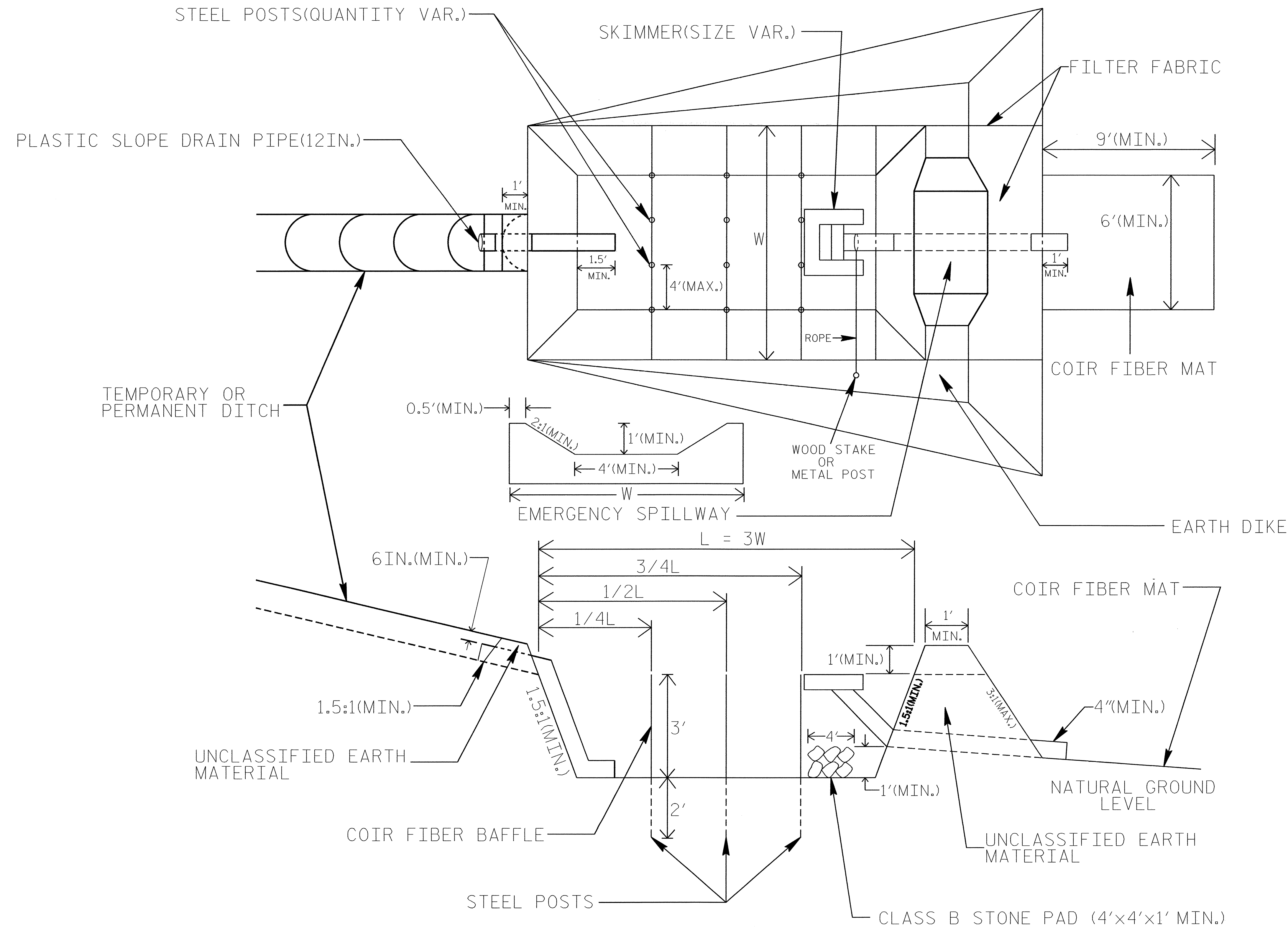


NOTE: INSTALL THREE(3) COIR FIBER BAFFLES IN SILT BASINS AND SEDIMENT DAMS AT DRAINAGE OUTLETS WITH A SPACING OF $\frac{1}{4}$ THE BASIN LENGTH. TWO(2) COIR FIBER BAFFLES CAN BE INSTALLED IN SILT BASINS AND DAMS LESS THAN 20 FT. IN LENGTH WITH A SPACING OF $\frac{1}{3}$ THE BASIN LENGTH.

BAFFLE MATERIAL SHALL BE SECURED TO THE BOTTOM AND SIDES OF BASIN USING 12" LANDSCAPE STAPLES

SKIMMER BASIN WITH BAFFLES DETAIL

PROJECT REFERENCE NO. B-4097	SHEET NO. EC-2B
RW SHEET NO.	
ROADWAY DESIGN ENGINEER	HYDRAULICS ENGINEER



COIR FIBER MAT ANCHOR OPTIONS

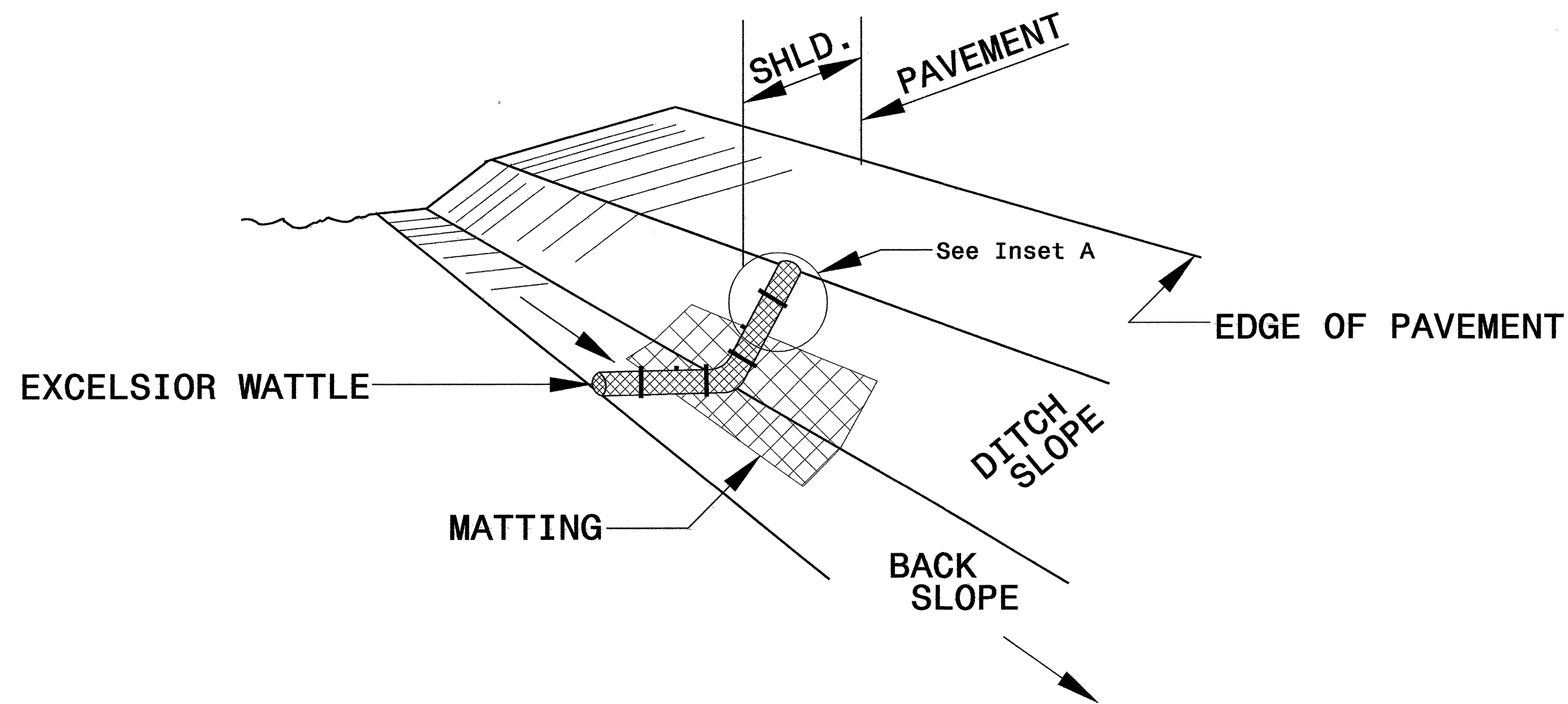
NOTES

1. SEED AND PLACE MATTING FOR EROSION CONTROL ON INTERIOR SIDESLOPES.
2. LIMIT EARTH DIKE HEIGHT TO 5 FT.
3. THE MINIMUM BASIN WIDTH SHALL BE 9 FT.
4. DETERMINE EMERGENCY SPILLWAY LENGTH (FT.) USING $Q/0.8$, WHERE Q IS FLOW RATE (CFS) INTO BASIN.

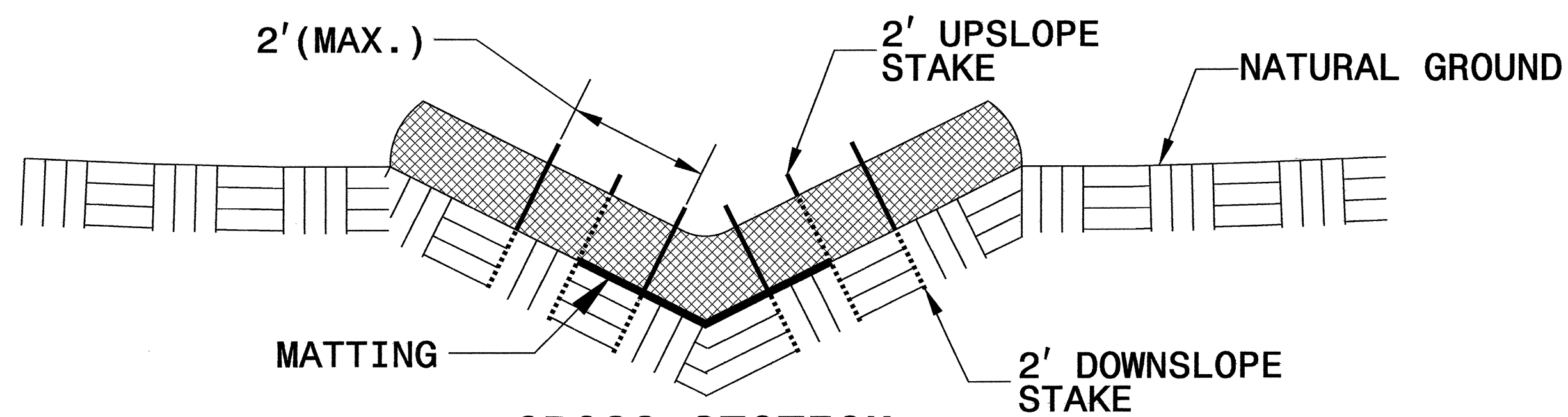
NOT TO SCALE

PROJECT REFERENCE NO. B-4097	SHEET NO. EC-2C
RW SHEET NO.	
ROADWAY DESIGN ENGINEER	HYDRAULICS ENGINEER

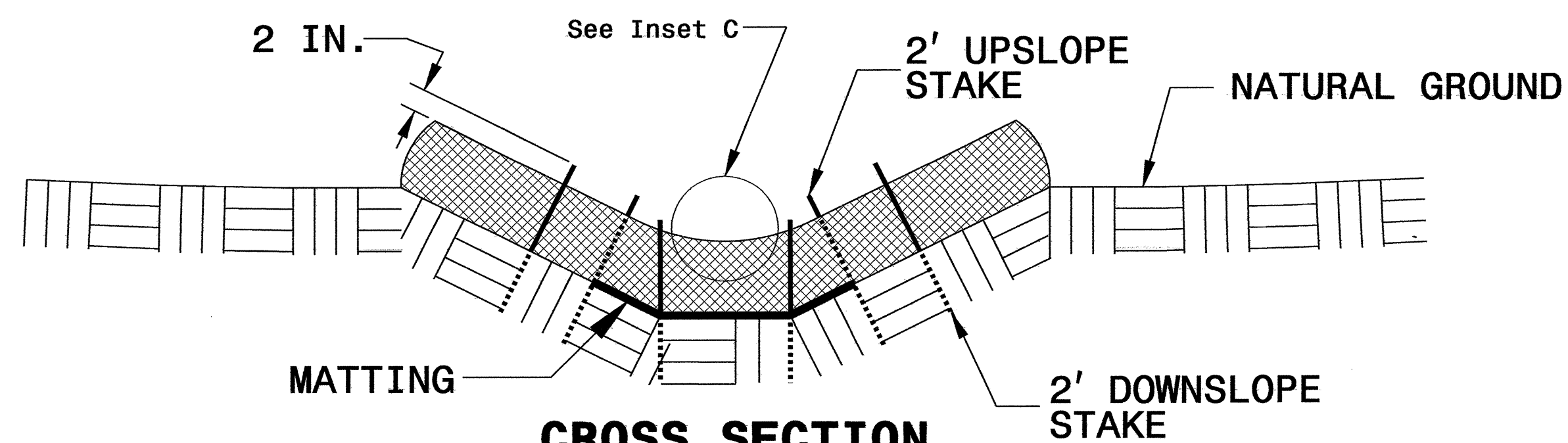
WATTLE WITH POLYACRYLAMIDE DETAIL



ISOMETRIC VIEW



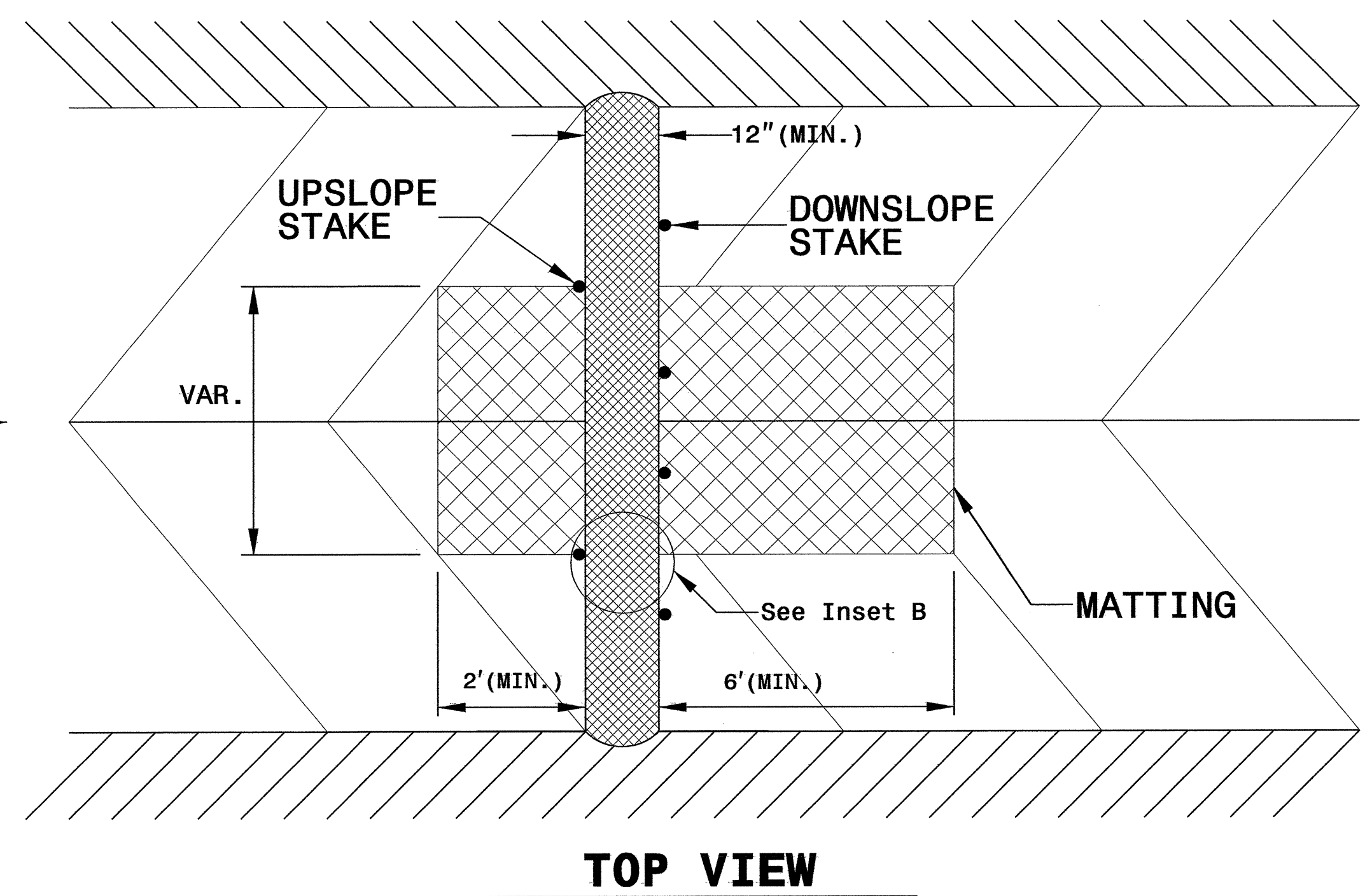
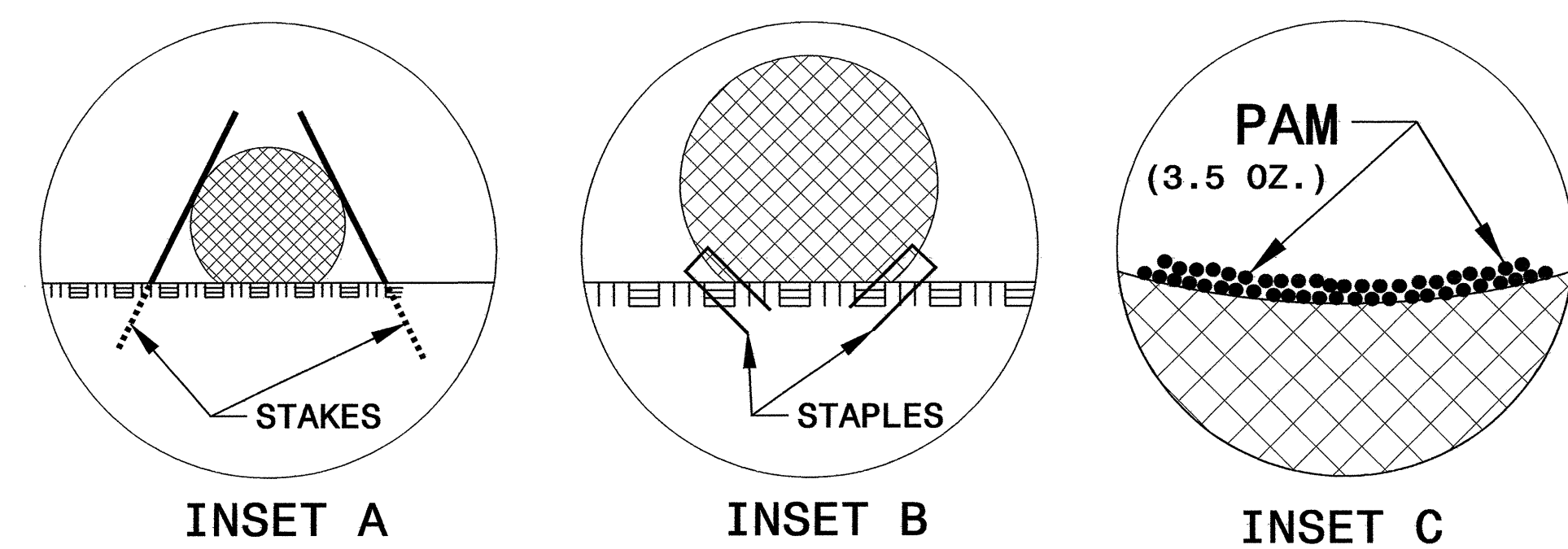
CROSS SECTION VEE DITCH



CROSS SECTION TRAPEZOIDAL DITCH

NOTES:

- USE MINIMUM 12 IN. DIAMETER EXCELSIOR WATTLE.
- USE 2 FT. WOODEN STAKES WITH A 2 IN. BY 2 IN. CROSS SECTION.
- INSTALL A MINIMUM OF 2 UPSLOPE STAKES AND 4 DOWNSLOPE STAKES AT AN ANGLE TO WEDGE WATTLE TO BOTTOM OF DITCH.
- PROVIDE STAPLES MADE OF 0.125 IN. DIAMETER STEEL WIRE FORMED INTO A U SHAPE NOT LESS THAN 12" IN LENGTH.
- INSTALL STAPLES APPROXIMATELY EVERY 1 LINEAR FOOT ON BOTH SIDES OF WATTLE AND AT EACH END TO SECURE IT TO THE SOIL.
- INSTALL MATTING IN ACCORDANCE WITH SECTION 1631 OF THE STANDARD SPECIFICATIONS.
- INITIALLY APPLY 3.5 OUNCES OF ANIONIC OR NEUTRALLY CHARGED POLYACRYLAMIDE (PAM) OVER WATTLE WHERE WATER WILL FLOW AND AFTER EVERY RAINFALL EVENT THAT IS EQUAL TO OR EXCEEDS 0.25 IN.



TOP VIEW

8/17/99

NOTE:
UTILIZE TEMPORARY ROCK SILT CHECK TYPE - A
AS STILLING BASIN WHERE APPLICABLE.

NOTE:
PLACE TEMPORARY ROCK SEDIMENT DAMS TYPE - B
AND TEMPORARY ROCK SILT CHECKS TYPE - A AT
DRAINAGE OUTLETS.

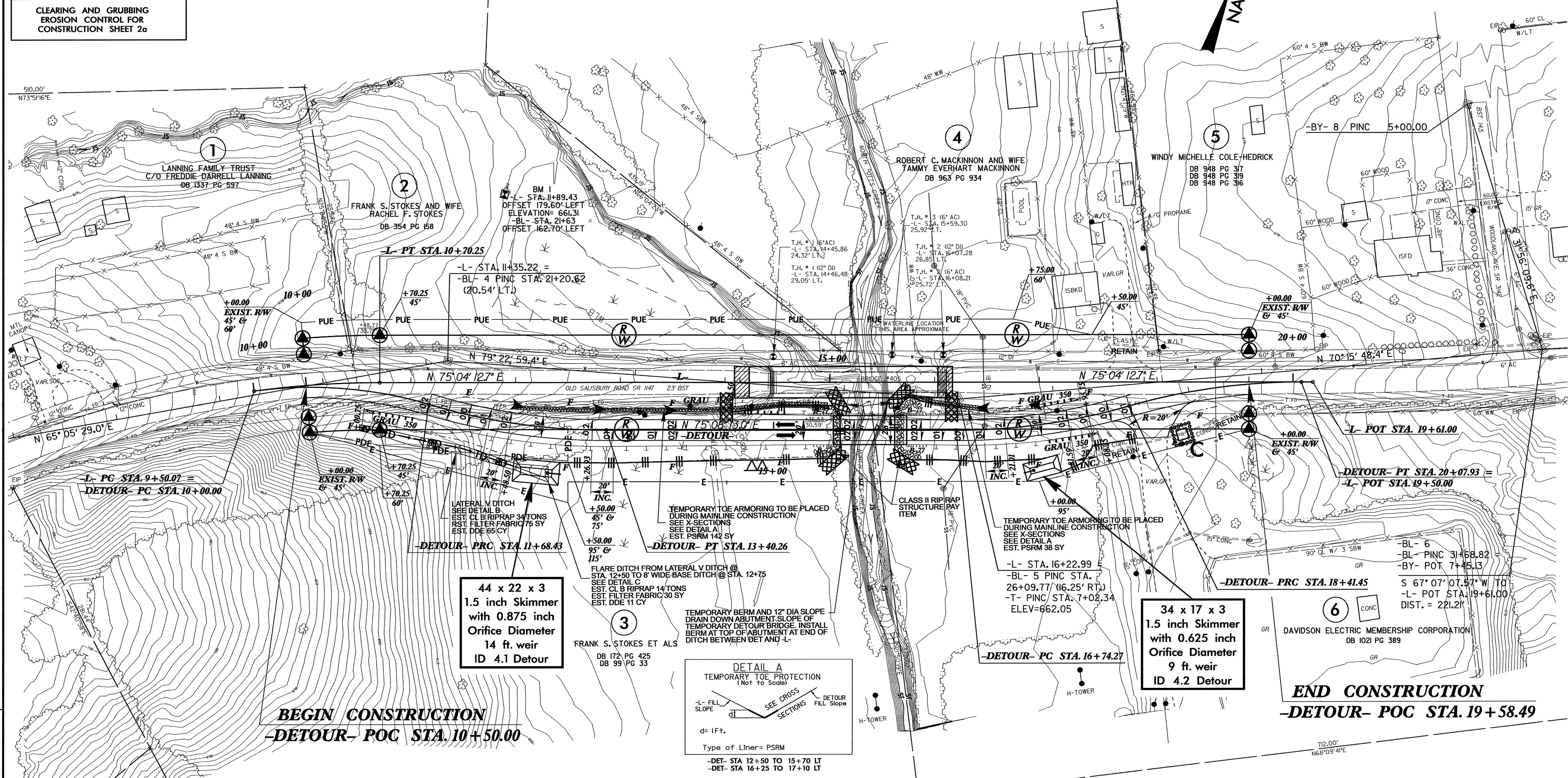
CLEARING AND GRUBBING
EROSION CONTROL FOR
CONSTRUCTION SHEET 2a

PROJECT REFERENCE NO.	SHEET NO.
B-4097	EC-3/CONST.2a
RW SHEET NO.	
ROADWAY DESIGN ENGINEER	HYDRAULICS ENGINEER

DETOUR

NAD 8395

REVISIONS

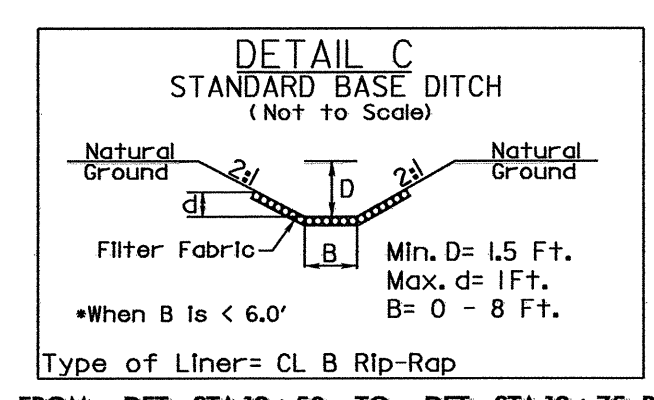
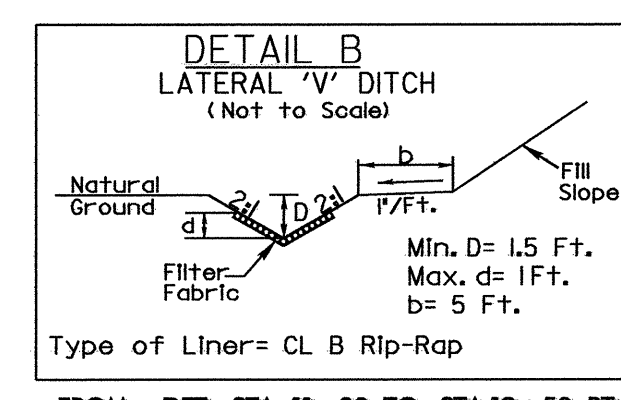
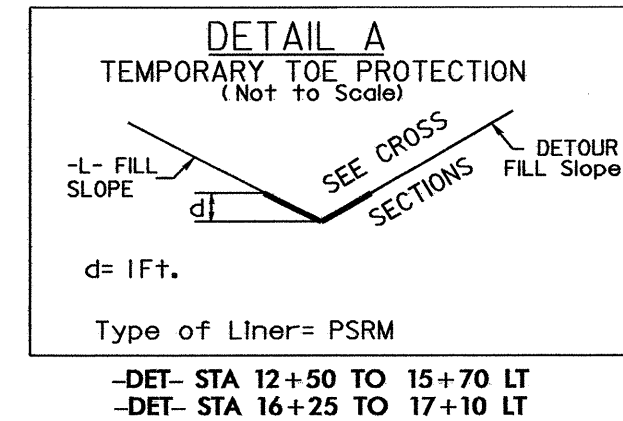


L
 PI STA 10+0.25
 N 67° 25' 08.3" E (BAC)
 Δ = 7' 39" 04.3" (RT)
 D = 6' 21" 58.3"
 L = 120.18'
 T = 60.18'
 R = 900.00'
 SE = SEE PLANS
 RO = SEE PLANS

BEGIN CONSTRUCTION
-DETOUR- POC STA. 10+50.00

44 x 22 x 3
 1.5 inch Skimmer
 with 0.875 inch
 Orifice Diameter
 14 ft. weir
 ID 4.1 Detour

3
 FRANK S. STOKES ET ALS
 DB 172 PG 425
 DB 99 PG 33



34 x 17 x 3
 1.5 inch Skimmer
 with 0.625 inch
 Orifice Diameter
 9 ft. weir
 ID 4.2 Detour

6
 DAVIDSON ELECTRIC MEMBERSHIP CORPORATION
 DB 1021 PG 389

END CONSTRUCTION
-DETOUR- POC STA. 19+58.49

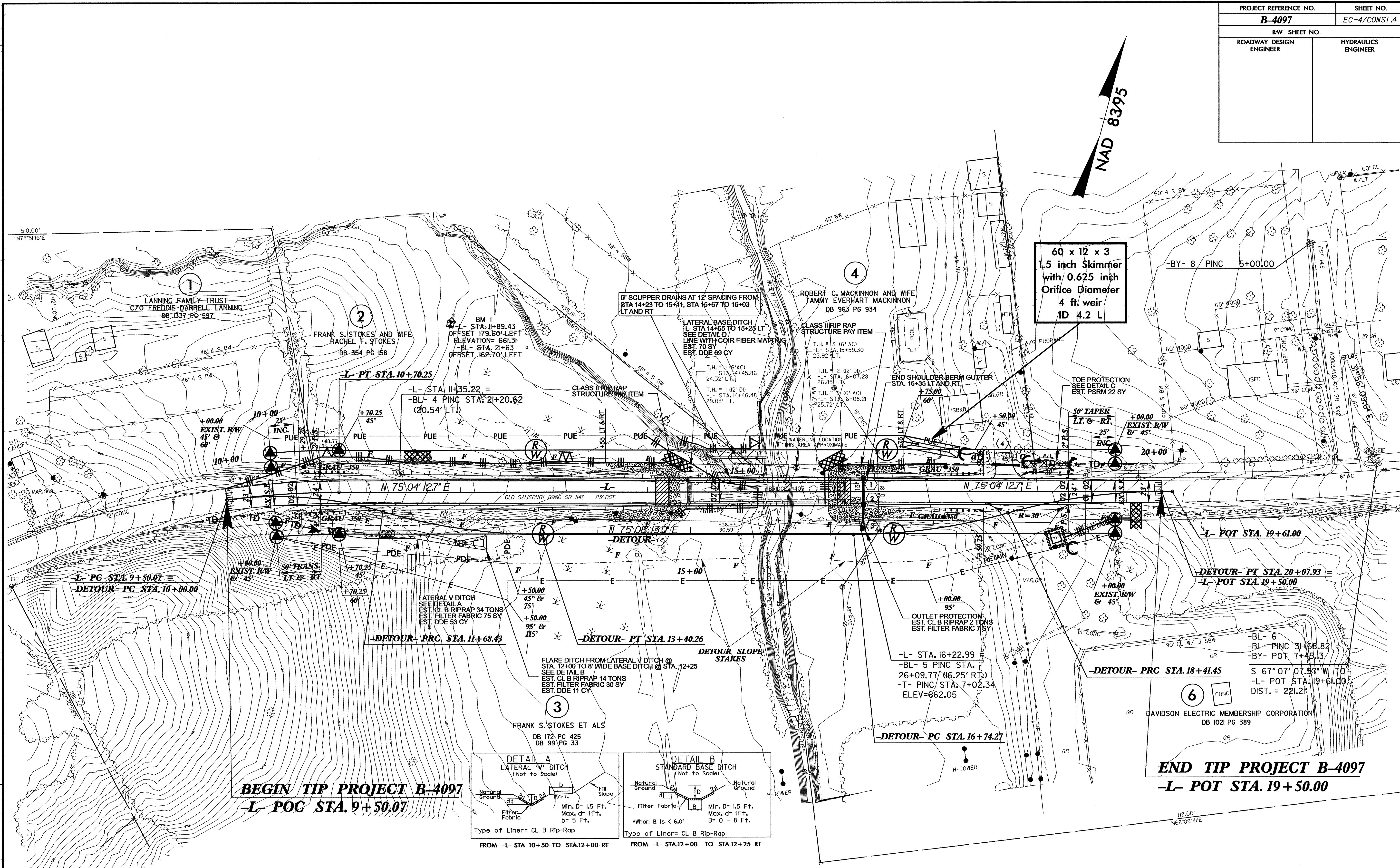
20-NOV-2008 11:32
 P:\environmental\Design\B4097_EC_psh02a.dgn
 AT REVISION 2/18/13

PROJECT REFERENCE NO. B-4097	SHEET NO. EC-4/CONST.4
RW SHEET NO.	
ROADWAY DESIGN ENGINEER	HYDRAULICS ENGINEER

**60 x 12 x 3
1.5 inch Skimmer
with 0.625 inch
Orifice Diameter
4 ft weir
ID 4.2 L**

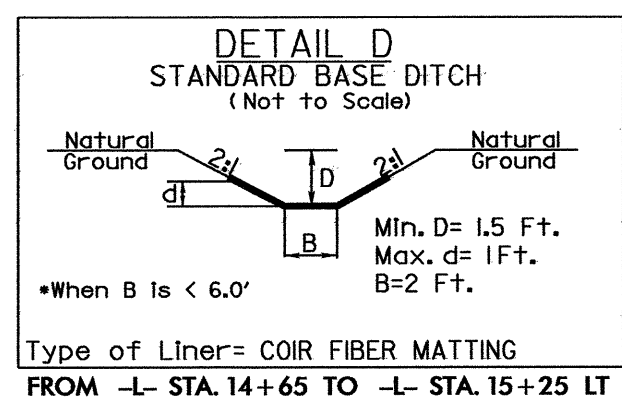
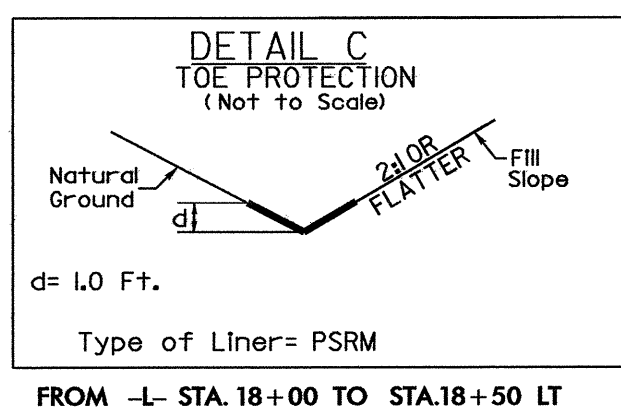
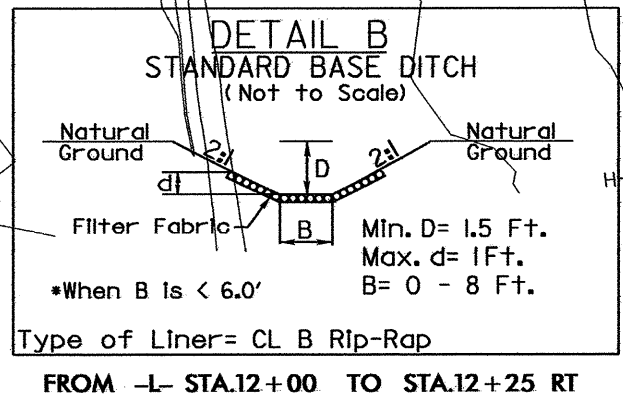
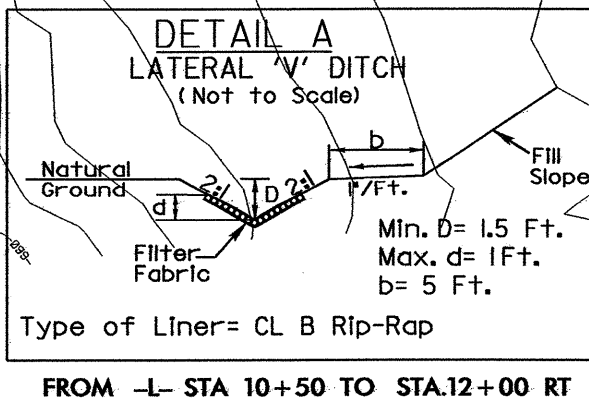
NAD 8395

REVISIONS



BEGIN TIP PROJECT B-4097
-L- POC STA. 9+50.07

END TIP PROJECT B-4097
-L- POT STA. 19+50.00



NOTE:
UTILIZE TEMPORARY ROCK SILT CHECK TYPE - A AS STILLING BASIN WHERE APPLICABLE.

NOTE:
PLACE TEMPORARY ROCK SEDIMENT DAMS TYPE - B AND TEMPORARY ROCK SILT CHECKS TYPE - A AT DRAINAGE OUTLETS.

**CLEARING AND GRUBBING
EROSION CONTROL FOR
CONSTRUCTION SHEET 4**

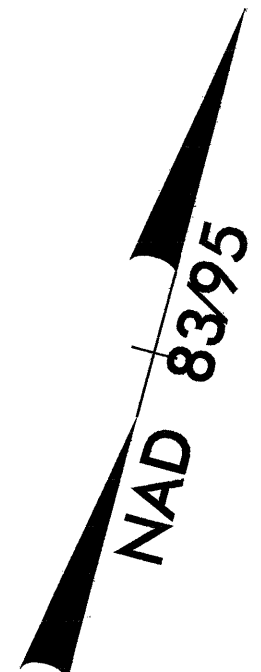
8/17/99
 20-NOV-2008 11:36
 F:\environmental\Design\B4097_EC-ps104.dgn
 AT REVISED

PROJECT REFERENCE NO.	SHEET NO.
B-4097	EC-5/CONST.2a
RW SHEET NO.	HYDRAULICS ENGINEER
ROADWAY DESIGN ENGINEER	

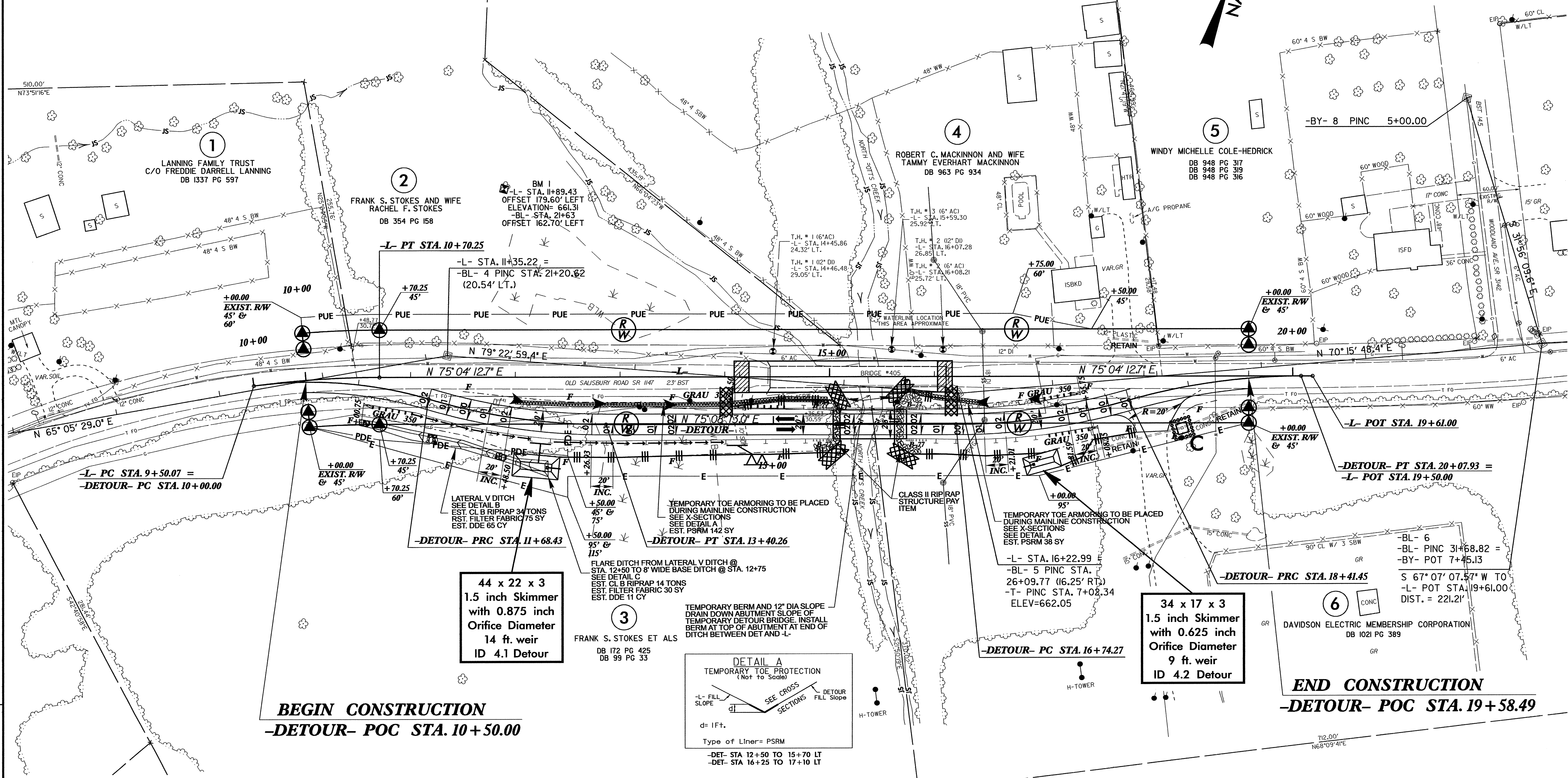
DETOUR

NOTE: UTILIZE TEMPORARY ROCK SILT CHECK TYPE - A AS STILLING BASIN WHERE APPLICABLE.

Place Matting for Erosion Control on Slopes Adjacent to Permitted Wetlands as Work Allows.



REVISIONS



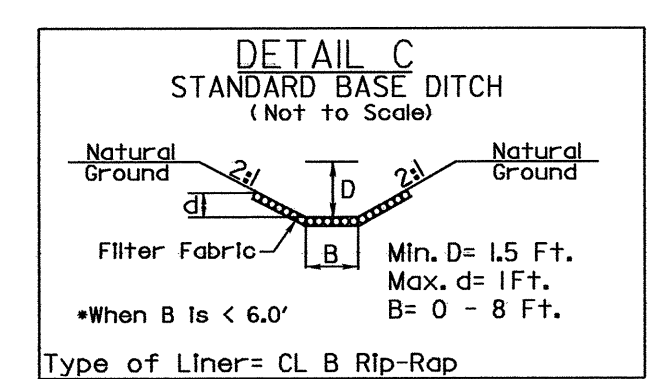
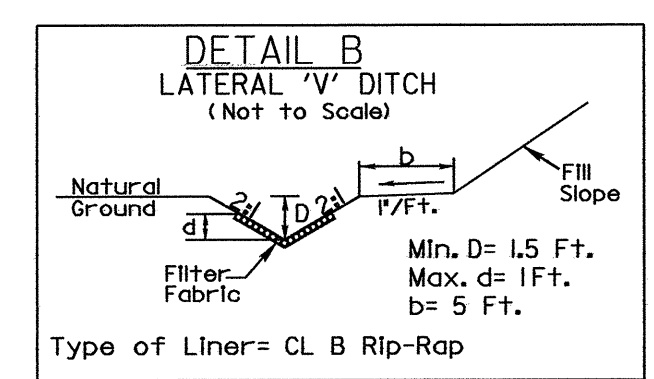
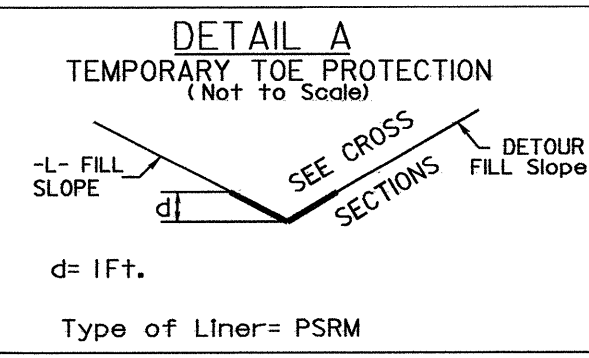
-L-
 PI STA. 10+0.25
 N 67° 25' 08.3" E (BAC)
 Δ = 7° 39' 04.3" (RT)
 D = 6' 21' 58.3"
 L = 120.18'
 T = 60.18'
 R = 900.00'
 SE = SEE PLANS
 RO = SEE PLANS

BEGIN CONSTRUCTION
 -DETOUR- POC STA. 10+50.00

END CONSTRUCTION
 -DETOUR- POC STA. 19+58.49

44 x 22 x 3
 1.5 inch Skimmer
 with 0.875 inch
 Orifice Diameter
 14 ft. weir
 ID 4.1 Detour

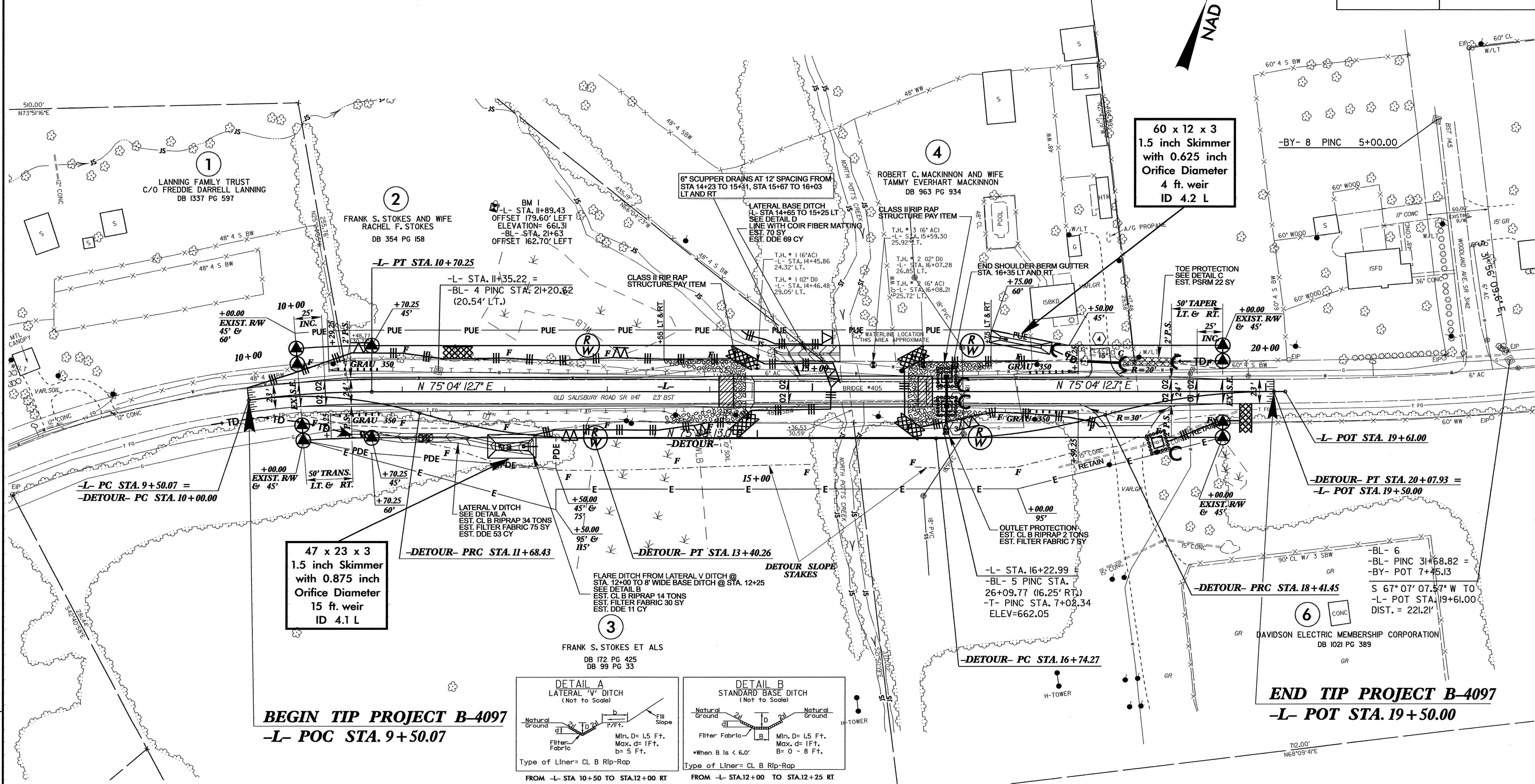
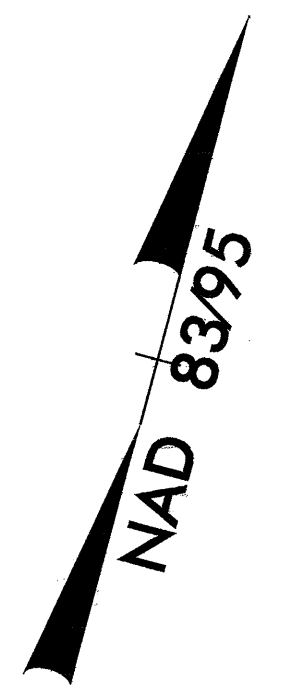
34 x 17 x 3
 1.5 inch Skimmer
 with 0.625 inch
 Orifice Diameter
 9 ft. weir
 ID 4.2 Detour



8/17/99

20-NOV-2008 11:32
 F:\envi\comp\mental\Design\B4097_EC.psh02a.dgn
 P:\envi\comp\mental\Design\B4097_EC.psh02a.dgn

PROJECT REFERENCE NO. B-4097	SHEET NO. EC-6/CONST.4
RW SHEET NO.	
ROADWAY DESIGN ENGINEER	HYDRAULICS ENGINEER

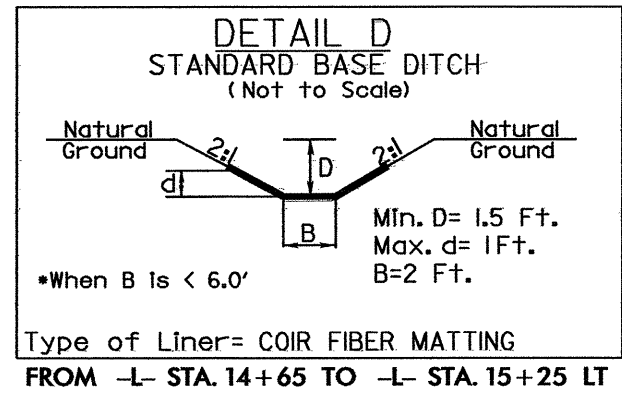
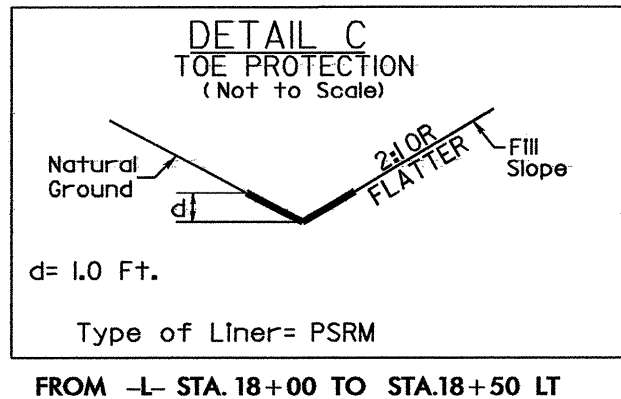
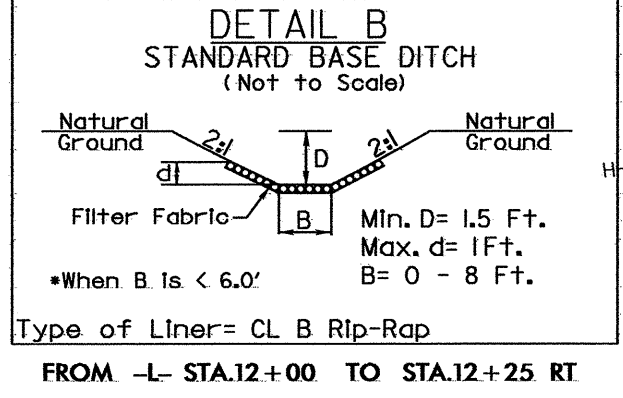
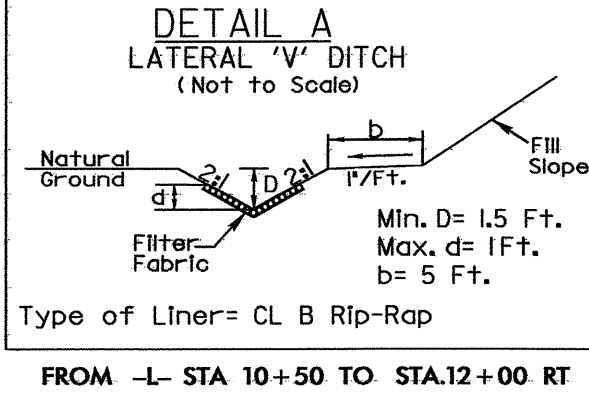


60 x 12 x 3
1.5 inch Skimmer
with 0.625 inch
Orifice Diameter
4 ft. weir
ID 4.2 L

47 x 23 x 3
1.5 inch Skimmer
with 0.875 inch
Orifice Diameter
15 ft. weir
ID 4.1 L

BEGIN TIP PROJECT B-4097
-L- POC STA. 9+50.07

END TIP PROJECT B-4097
-L- POT STA. 19+50.00



Place Matting for Erosion Control
on Slopes Adjacent to Permitted
Wetlands as Work Allows.

NOTE:
UTILIZE TEMPORARY ROCK SILT CHECK TYPE - A
AS STILLING BASIN WHERE APPLICABLE.

REVISIONS

20-NOV-2008 11:34
 F:\environmental\Design\B4097_EC_psh04.dgn
 PLOT AT BENV231817