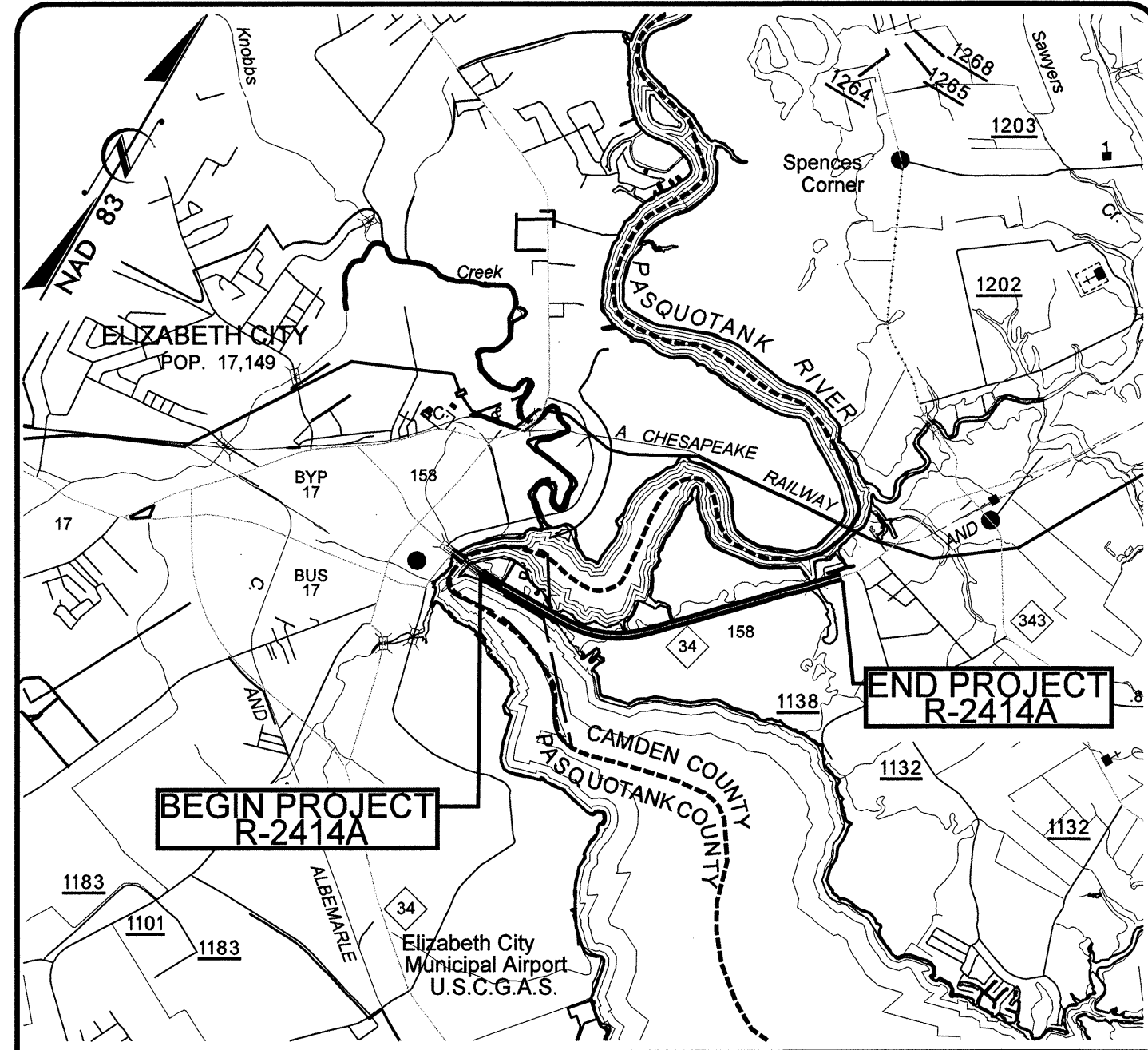


TIP PROJECT: R-2414A

09/05/99

See Sheet 1-A For Index of Sheets
See Sheet 1-B For Symbolology



VICINITY MAP

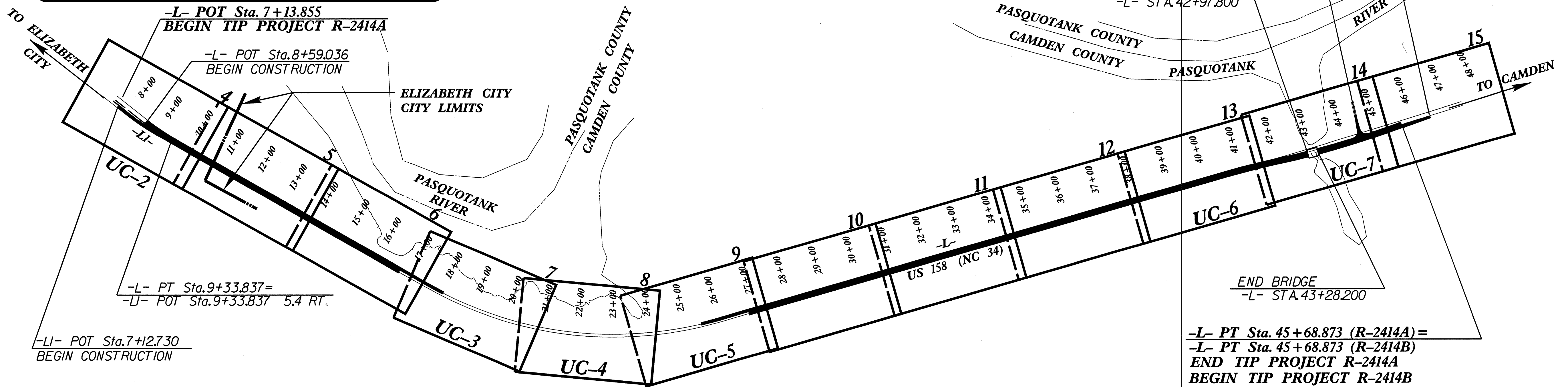
STATE OF NORTH CAROLINA
DIVISION OF HIGHWAYS

**UTILITY CONSTRUCTION
CAMDEN COUNTY**

LOCATION: US 158 / NC 34 FROM EAST OF PASQUOTANK RIVER TO NORTH OF SR 1257 (HAVENWOOD DR.) BETWEEN ELIZABETH CITY AND CAMDEN
TYPE OF WORK: UTILITY CONSTRUCTION

METRIC
ALL DIMENSIONS IN THESE PLANS ARE IN METERS AND/OR MILLIMETERS UNLESS OTHERWISE SHOWN

| | |
|----------------|-------------|
| T.I.P. NO. | SHEET NO. |
| R-2414A | UC-1 |



A PORTION OF THIS PROJECT IS WITHIN MUNICIPAL BOUNDARIES OF ELIZABETH CITY

PREPARED IN THE OFFICE OF:
dmp
DAVIS-MARTIN-POWELL AND ASSOCIATES, INC.
6415 OLD PLANK ROAD
HIGH POINT, NC 27265
PHONE (336) 886-4821
FAX (336) 886-4458

Randy McNeill, P.E. UTILITIES PROJECT MANAGER
Andy Larrick, P.E. UTILITIES PROJECT ENGINEER
Andy Larrick, P.E. UTILITIES PROJECT DESIGNER

| SHEET NO. | DESCRIPTION |
|----------------|----------------------------------|
| UC-1 | TITLE SHEET |
| UC-2 THRU UC-7 | UTILITY CONSTRUCTION PLAN SHEETS |
| UC-8 | PROFILE SHEET |
| UC-9 | DETAILS SHEET |

WATER AND SEWER OWNERS ON PROJECT

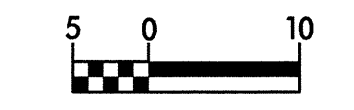
WATER - CITY OF ELIZABETH CITY AND CAMDEN COUNTY

SEWER - CITY OF ELIZABETH CITY

SEAL
NORTH CAROLINA PROFESSIONAL ENGINEER
ANDREW P. LARRICK
26457
10-16-08

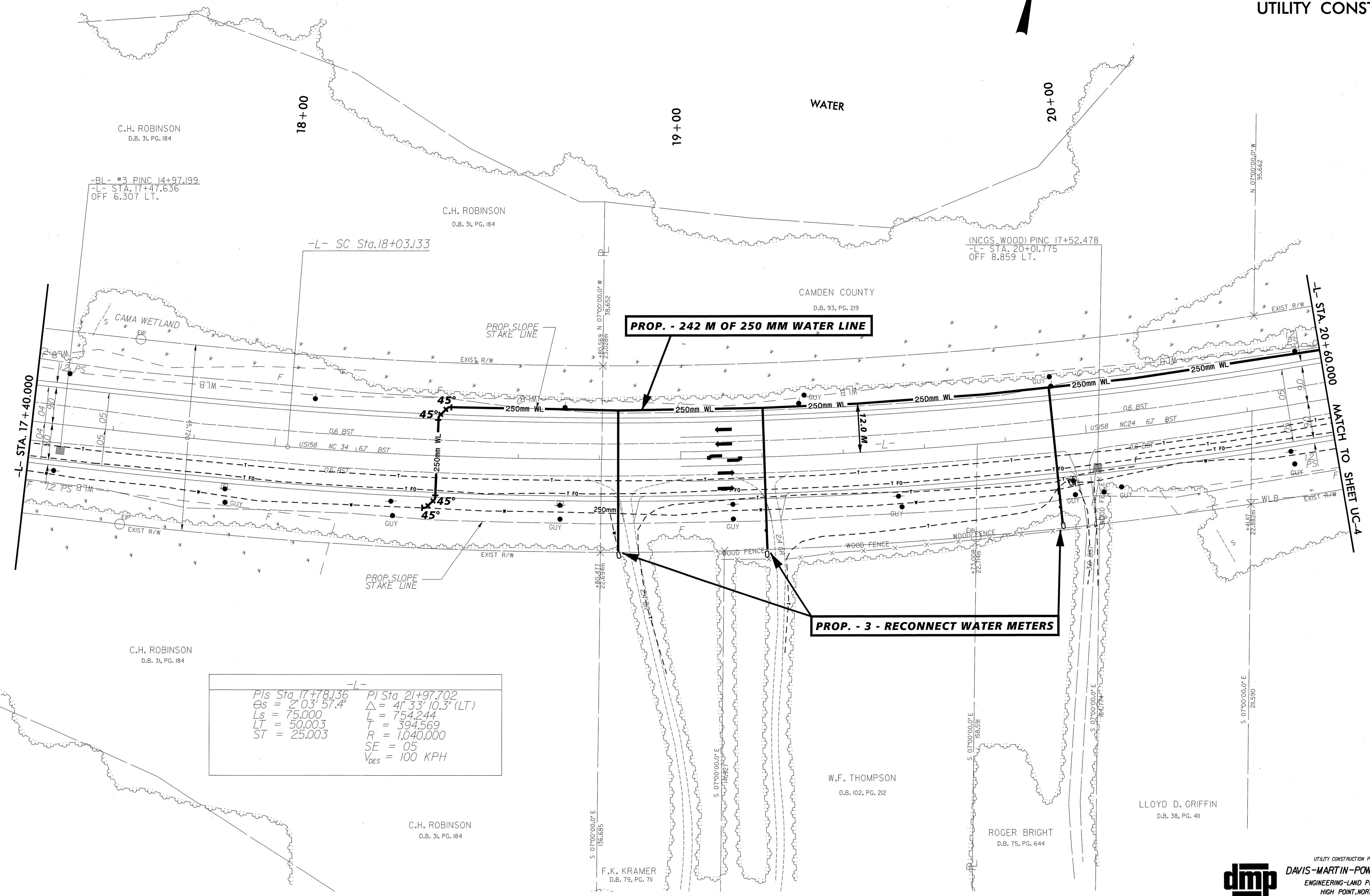
DEPARTMENT OF TRANSPORTATION
DIVISION OF HIGHWAYS
PROJECT SERVICES
UTILITY SECTION
1591 MAIL SERVICES CENTER
RALEIGH NC 27699-1591
PHONE (919) 250-4128
FAX (919) 250-4119

Roger Worthington, P.E. UTILITIES SECTION ENGINEER
Corey Bousquet, P.E. UTILITIES SQUAD LEADER PROJECT ENGINEER
Kifah Kamil UTILITIES PROJECT DESIGNER



| | |
|---|---|
| PROJECT REFERENCE NO. R-2414A | SHEET NO. UC-3 |
| DESIGNED BY: DMP | |
| DRAWN BY: DMP | |
| CHECKED BY: DMP | |
| APPROVED BY: | |
| REVISOR: | NORTH CAROLINA DEPARTMENT OF TRANSPORTATION |
| PROJECT SERVICES UNIT PHONE: (919) 250-4128 FAX: (919) 250-4119 | UTILITY CONSTRUCTION PLANS ONLY |

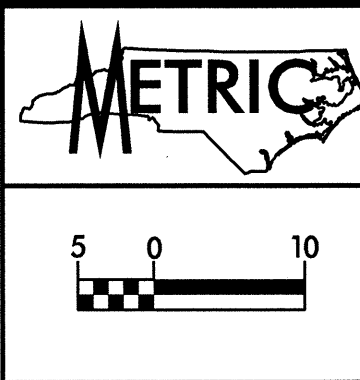
UTILITY CONSTRUCTION



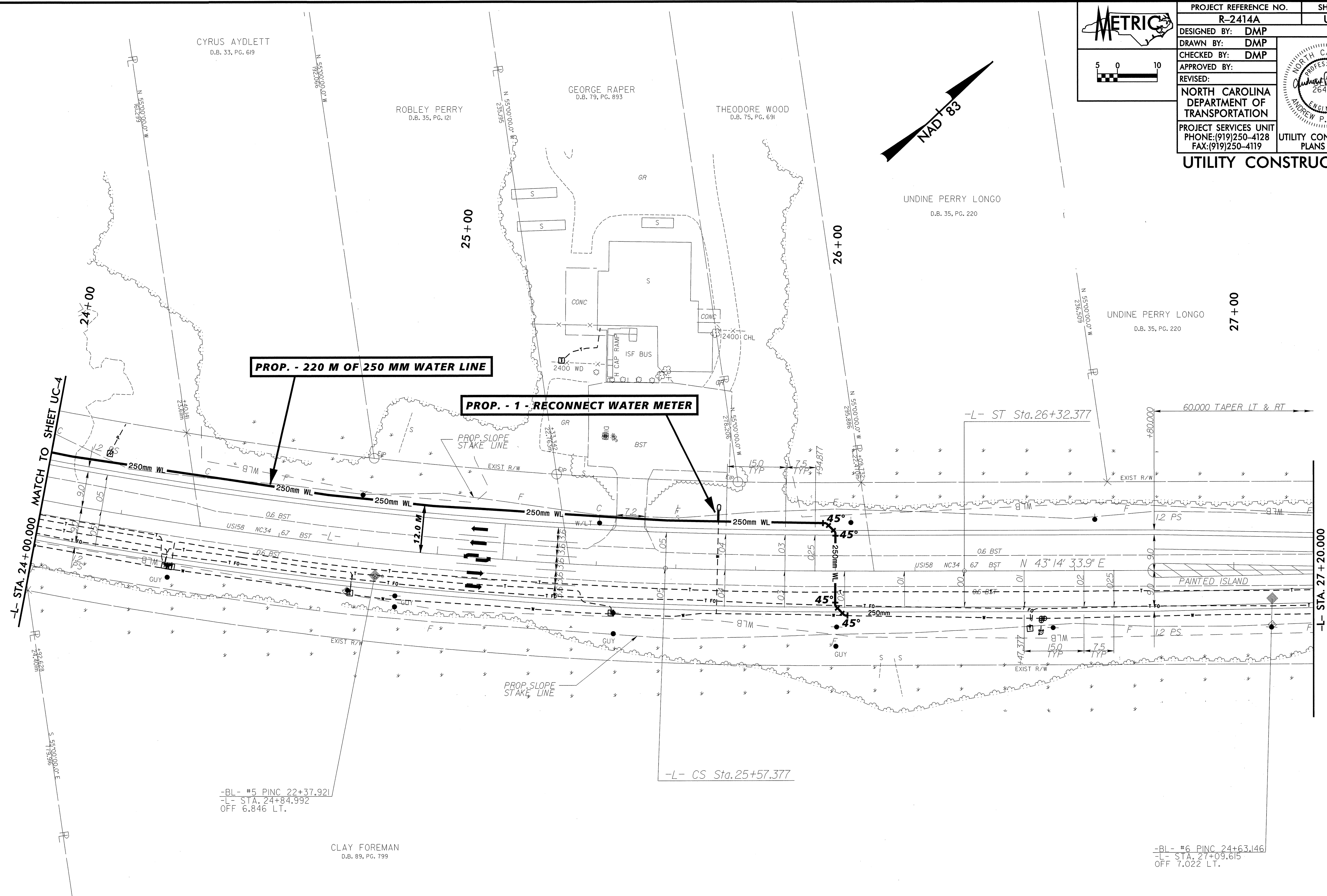
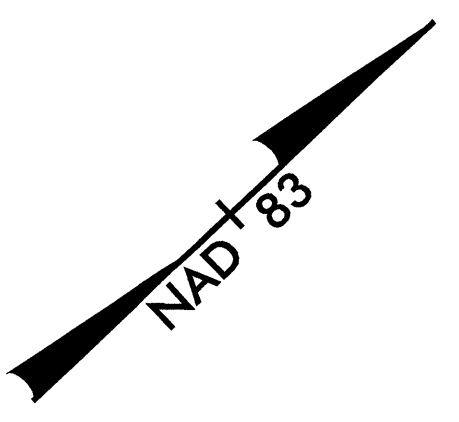
| | |
|--|---|
| -L- PIs Sta 17+78.136 Os = 2° 03' 57.4" Ls = 75.000 LT = 50.003 ST = 25.003 | -L- PI Sta 21+97.702 Δ = 41° 33' 10.3" (LT) L = 754.244 T = 394.569 R = 1,040.000 SE = 05 V _{DES} = 100 KPH |
|--|---|

REVISIONS

8/17/2008
SYSTEMS
DRAWING
DATE



| | |
|---|-------------------|
| PROJECT REFERENCE NO. R-2414A | SHEET NO. UC-5 |
| DESIGNED BY: DMP | |
| DRAWN BY: DMP | |
| CHECKED BY: DMP | |
| APPROVED BY: | |
| REVISD: | |
| NORTH CAROLINA DEPARTMENT OF TRANSPORTATION | |
| PROJECT SERVICES UNIT PHONE: (919) 250-4128 FAX: (919) 250-4119 | |
| UTILITY CONSTRUCTION PLANS ONLY | |



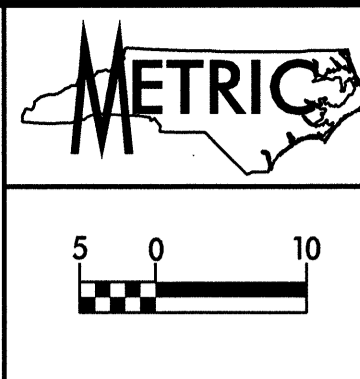
REVISIONS

| | |
|---------------------------------------|-----------------------------------|
| -L- | |
| PI Sta 21+97.702 | PIs Sta 25+82.380 |
| $\Delta = 41^{\circ} 33' 10.3''$ (LT) | $\Theta_s = 2^{\circ} 03' 57.4''$ |
| L = 754.244 | Ls = 75.000 |
| T = 394.569 | LT = 50.003 |
| R = 1,040.000 | ST = 25.003 |
| SE = 05 | |
| V _{DES} = 100 KPH | |

8/17/09

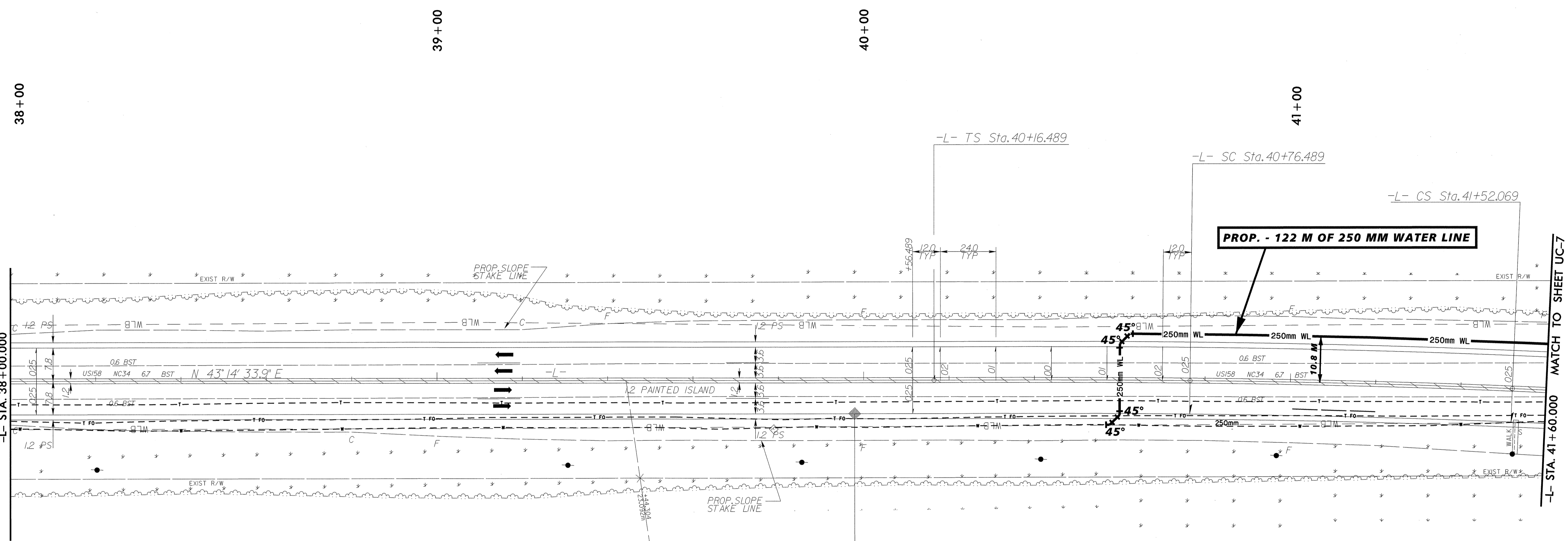
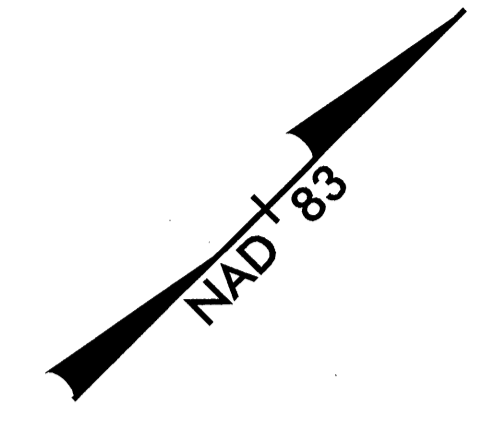
-BL- #6 PINC 24+63.146
 -L- STA. 27+09.615
 OFF 7.022 LT.

CLAY FOREMAN
 D.B. 89, PG. 799



| | |
|--|-------------------|
| PROJECT REFERENCE NO. R-2414A | SHEET NO. UC-6 |
| DESIGNED BY: DMP | |
| DRAWN BY: DMP | |
| CHECKED BY: DMP | |
| APPROVED BY: | |
| REVISED: | |
| NORTH CAROLINA DEPARTMENT OF TRANSPORTATION PROJECT SERVICES UNIT PHONE: (919) 250-4128 FAX: (919) 250-4119 | |
| UTILITY CONSTRUCTION PLANS ONLY | |

COLLEGE OF THE ALBEMARLE
D.B. 80, PG. 362



PROP. - 122 M OF 250 MM WATER LINE

REVISIONS

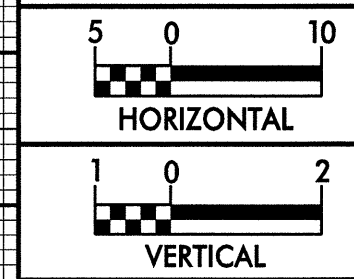
MATCH TO SHEET UC-7

ROBERT LUTHER
D.B. 86, PG. 843

-BL- #1 PINC 37+51.417
-L- STA. 39+97.881
OFF 7.776 LT.

03
PECAN FARMS, LLC
D.B. 237, PG. 728

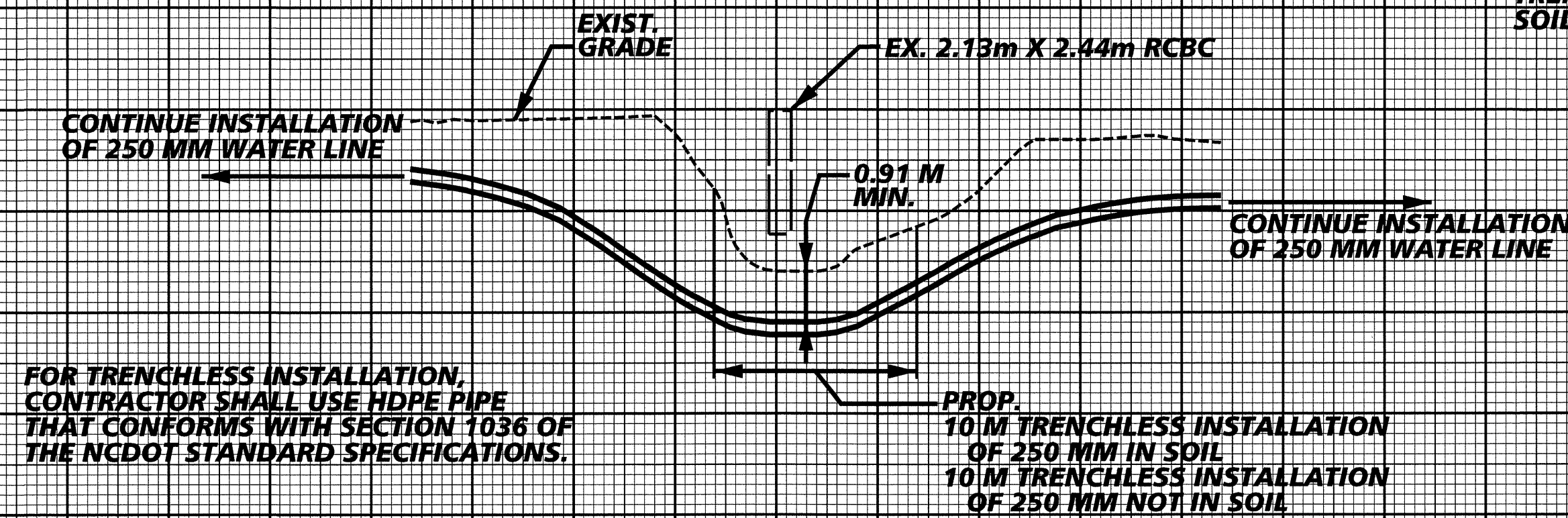
| | | |
|--|--|--|
| PIs Sta 40+56.489 $\Theta_s = 0^\circ 41' 15.2''$ $L_s = 60.000$ $LT = 40.000$ $ST = 20.000$ | -L- PI Sta 41+14.282 $\Delta = 1^\circ 43' 55.8'' (RT)$ $L = 75.580$ $T = 37.793$ $R = 2,500.000$ $SE = RC$ $V_{DES} = 100 KPH$ | PIs Sta 41+72.069 $\Theta_s = 0^\circ 41' 15.2''$ $L_s = 60.000$ $LT = 40.000$ $ST = 20.000$ |
|--|--|--|



| | |
|---|---|
| PROJECT REFERENCE NO. R-2414A | SHEET NO. UC-8 |
| DESIGNED BY: DMP | |
| DRAWN BY: DMP | |
| CHECKED BY: DMP | |
| APPROVED BY: | |
| REVISED: | NORTH CAROLINA DEPARTMENT OF TRANSPORTATION |
| PROJECT SERVICES UNIT PHONE: (919) 250-4128 FAX: (919) 250-4119 | |
| UTILITY CONSTRUCTION PLANS ONLY | |

NOTES:
 1) THE CONTRACTOR'S ATTENTION IS DIRECTED TO SECTIONS 1550, 102 AND 107 OF THE STANDARD SPECIFICATIONS CONCERNING THE TRENCHLESS INSTALLATION. NO DAMAGE IS ALLOWED TO THE WETLAND OR STREAM BY THE TRENCHLESS INSTALLATION. THE CONTRACTOR'S ENGINEER SHALL DESIGN THE INSTALLATION METHOD AND PROVIDE ON-SITE OVERSIGHT.

2) THIS PROFILE IS INTENDED TO SERVE AS A GENERAL GUIDE ONLY. ACTUAL DEPTH AND GRADE OF TRENCHLESS INSTALLATION MAY VARY BASED ON SOIL CONDITIONS.



**TRENCHLESS WATER MAIN INSTALLATION
NEAR PROPOSED BRIDGE AT -L- STA 43+00**

42 +20 +40 +60 +80 43 +20 +40 +60 +80 44

METRIC

PROJECT REFERENCE NO. R-2414A SHEET NO. UC-9

DESIGNED BY: DMP
 DRAWN BY: DMP
 CHECKED BY: DMP
 APPROVED BY: [Signature]
 REVISED: [Signature]

NORTH CAROLINA DEPARTMENT OF TRANSPORTATION
 PROJECT SERVICES UNIT
 PHONE: (919)250-4128
 FAX: (919)250-4119

UTILITY CONSTRUCTION PLANS ONLY

BASED ON TEST PRESSURE OF 200 P.S.I. (1.38 MPa)

| HORIZONTAL RESTRAINT | | | | | | | | | | VERTICAL RESTRAINT | | | | | | | | | | | | | | | |
|--|----------------|----------------|------------------------|------|------|------|------|------|------|---|------|------|-----------|-------------|----------------|------|------|------|------|------|------|------|------|------|------|
| BEARING AREAS GIVEN ARE IN SQUARE FEET (S.F.) AND SQUARE METERS (S.M.) | | | | | | | | | | VOLUMES GIVEN ARE IN CUBIC YARDS (C.Y.) AND CUBIC METERS (C.M.)** | | | | | | | | | | | | | | | |
| PIPE SIZE | DEGREE OF BEND | STATIC THRUST* | ALLOWABLE SOIL BEARING | | | | | | | | | | PIPE SIZE | RESTR. RODS | DEGREE OF BEND | | | | | | | | | | |
| | | | 1000 | 48 | 1000 | 48 | 1000 | 48 | 1000 | 48 | 1000 | 48 | | | 1000 | 48 | 1000 | 48 | 1000 | 48 | 1000 | 48 | 1000 | 48 | |
| | | LBS. | KG | S.F. | S.M. | S.F. | S.M. | S.F. | S.M. | S.F. | S.M. | S.F. | S.M. | S.F. | S.M. | C.Y. | C.M. | C.Y. | C.M. | C.Y. | C.M. | | | | |
| 4" (100 MM) | 11/4° | 616 | 279 | 1 | 0.09 | 1 | 0.09 | 1 | 0.09 | 1 | 0.09 | 1 | 0.09 | 1 | 0.09 | 2 | 1/2" | 13 | 0.25 | 0.19 | 0.50 | 0.38 | 0.75 | 0.57 | |
| | 22 1/2° | 1,226 | 556 | 2 | 0.09 | 2 | 0.09 | 2 | 0.09 | 2 | 0.09 | 2 | 0.09 | 2 | 0.09 | 2 | 1/2" | 13 | 0.25 | 0.19 | 0.50 | 0.38 | 0.75 | 0.57 | |
| | 45° | 2,405 | 1,091 | 4 | 0.37 | 4 | 0.37 | 4 | 0.37 | 4 | 0.37 | 4 | 0.37 | 4 | 0.37 | 2 | 5/8" | 16 | 0.75 | 0.57 | 1.50 | 1.15 | 3.0 | 2.29 | |
| | TEE/PLUG | 3,143 | 1,426 | 3 | 0.28 | 2 | 0.18 | 1 | 0.09 | 1 | 0.09 | 1 | 0.09 | 1 | 0.09 | 1 | 0.09 | 2 | 5/8" | 16 | 0.75 | 0.57 | 1.50 | 1.15 | 3.0 |
| 6" (150 MM) | 11/4° | 1,395 | 628 | 2 | 0.18 | 1 | 0.09 | 1 | 0.09 | 1 | 0.09 | 1 | 0.09 | 1 | 0.09 | 2 | 3/4" | 19 | 1.25 | 0.96 | 2.25 | 1.72 | 4.50 | 3.44 | |
| | 22 1/2° | 2,758 | 1,251 | 4 | 0.37 | 4 | 0.37 | 4 | 0.37 | 4 | 0.37 | 4 | 0.37 | 4 | 0.37 | 2 | 3/4" | 19 | 1.25 | 0.96 | 2.25 | 1.72 | 4.50 | 3.44 | |
| | 45° | 5,409 | 2,453 | 8 | 0.46 | 6 | 0.28 | 2 | 0.18 | 1 | 0.09 | 1 | 0.09 | 1 | 0.09 | 2 | 7/8" | 22 | 1.75 | 1.34 | 3.25 | 2.48 | 6.50 | 4.97 | |
| | TEE/PLUG | 7,068 | 3,206 | 7 | 0.65 | 4 | 0.37 | 2 | 0.18 | 1 | 0.09 | 1 | 0.09 | 1 | 0.09 | 1 | 0.09 | 2 | 7/8" | 22 | 1.75 | 1.34 | 3.25 | 2.48 | 6.50 |
| 8" (200 MM) | 11/4° | 2,424 | 1,100 | 3 | 0.28 | 2 | 0.18 | 1 | 0.09 | 1 | 0.09 | 1 | 0.09 | 1 | 0.09 | 4 | 5/8" | 16 | 2.25 | 1.72 | 4.50 | 3.44 | 8.75 | 6.69 | |
| | 22 1/2° | 4,904 | 2,224 | 5 | 0.46 | 3 | 0.28 | 2 | 0.18 | 1 | 0.09 | 1 | 0.09 | 1 | 0.09 | 4 | 5/8" | 16 | 2.25 | 1.72 | 4.50 | 3.44 | 8.75 | 6.69 | |
| | 45° | 9,619 | 4,363 | 10 | 0.59 | 6 | 0.46 | 3 | 0.28 | 2 | 0.18 | 1 | 0.09 | 1 | 0.09 | 4 | 5/8" | 16 | 2.25 | 1.72 | 4.50 | 3.44 | 8.75 | 6.69 | |
| | TEE/PLUG | 12,568 | 5,701 | 13 | 1.21 | 6 | 0.56 | 3 | 0.28 | 2 | 0.18 | 1 | 0.09 | 1 | 0.09 | 4 | 5/8" | 16 | 2.25 | 1.72 | 4.50 | 3.44 | 8.75 | 6.69 | |
| 10" (250 MM) | 11/4° | 3,956 | 1,785 | 4 | 0.37 | 2 | 0.18 | 1 | 0.09 | 1 | 0.09 | 1 | 0.09 | 1 | 0.09 | 4 | 5/8" | 16 | 2.25 | 1.72 | 4.50 | 3.44 | 8.75 | 6.69 | |
| | 22 1/2° | 7,661 | 3,475 | 8 | 0.74 | 4 | 0.37 | 2 | 0.18 | 1 | 0.09 | 1 | 0.09 | 1 | 0.09 | 4 | 5/8" | 16 | 2.25 | 1.72 | 4.50 | 3.44 | 8.75 | 6.69 | |
| | 45° | 15,028 | 6,817 | 15 | 1.39 | 8 | 0.74 | 4 | 0.37 | 2 | 0.18 | 1 | 0.09 | 1 | 0.09 | 4 | 5/8" | 16 | 2.25 | 1.72 | 4.50 | 3.44 | 8.75 | 6.69 | |
| | TEE/PLUG | 19,535 | 8,905 | 20 | 1.86 | 10 | 0.93 | 5 | 0.46 | 2 | 0.18 | 1 | 0.09 | 1 | 0.09 | 4 | 5/8" | 16 | 2.25 | 1.72 | 4.50 | 3.44 | 8.75 | 6.69 | |
| 12" (300 MM) | 11/4° | 5,543 | 2,514 | 6 | 0.56 | 3 | 0.28 | 2 | 0.18 | 1 | 0.09 | 1 | 0.09 | 1 | 0.09 | 4 | 5/8" | 16 | 2.25 | 1.72 | 4.50 | 3.44 | 8.75 | 6.69 | |
| | 22 1/2° | 11,032 | 5,004 | 11 | 1.02 | 6 | 0.56 | 3 | 0.28 | 2 | 0.18 | 1 | 0.09 | 1 | 0.09 | 4 | 5/8" | 16 | 2.25 | 1.72 | 4.50 | 3.44 | 8.75 | 6.69 | |
| | 45° | 21,641 | 9,816 | 22 | 2.04 | 11 | 1.02 | 6 | 0.56 | 3 | 0.28 | 2 | 0.18 | 1 | 0.09 | 4 | 5/8" | 16 | 2.25 | 1.72 | 4.50 | 3.44 | 8.75 | 6.69 | |
| | TEE/PLUG | 28,274 | 12,825 | 28 | 2.60 | 14 | 1.30 | 7 | 0.65 | 3 | 0.28 | 2 | 0.18 | 1 | 0.09 | 4 | 5/8" | 16 | 2.25 | 1.72 | 4.50 | 3.44 | 8.75 | 6.69 | |
| 14" (350 MM) | 11/4° | 7,544 | 3,422 | 8 | 0.74 | 4 | 0.37 | 2 | 0.18 | 1 | 0.09 | 1 | 0.09 | 1 | 0.09 | 4 | 5/8" | 16 | 2.25 | 1.72 | 4.50 | 3.44 | 8.75 | 6.69 | |
| | 22 1/2° | 15,016 | 6,811 | 15 | 1.39 | 8 | 0.74 | 4 | 0.37 | 2 | 0.18 | 1 | 0.09 | 1 | 0.09 | 4 | 5/8" | 16 | 2.25 | 1.72 | 4.50 | 3.44 | 8.75 | 6.69 | |
| | 45° | 29,458 | 13,361 | 29 | 2.69 | 15 | 1.39 | 8 | 0.74 | 4 | 0.37 | 2 | 0.18 | 1 | 0.09 | 4 | 5/8" | 16 | 2.25 | 1.72 | 4.50 | 3.44 | 8.75 | 6.69 | |
| | TEE/PLUG | 38,485 | 17,456 | 38 | 3.53 | 19 | 1.76 | 9 | 0.93 | 5 | 0.46 | 2 | 0.18 | 1 | 0.09 | 4 | 5/8" | 16 | 2.25 | 1.72 | 4.50 | 3.44 | 8.75 | 6.69 | |
| 16" (400 MM) | 11/4° | 9,854 | 4,470 | 10 | 0.93 | 5 | 0.46 | 2 | 0.18 | 1 | 0.09 | 1 | 0.09 | 1 | 0.09 | 4 | 5/8" | 16 | 2.25 | 1.72 | 4.50 | 3.44 | 8.75 | 6.69 | |
| | 22 1/2° | 19,612 | 8,936 | 20 | 1.86 | 10 | 0.93 | 5 | 0.46 | 2 | 0.18 | 1 | 0.09 | 1 | 0.09 | 4 | 5/8" | 16 | 2.25 | 1.72 | 4.50 | 3.44 | 8.75 | 6.69 | |
| | 45° | 38,471 | 17,450 | 38 | 3.53 | 19 | 1.76 | 9 | 0.93 | 5 | 0.46 | 2 | 0.18 | 1 | 0.09 | 4 | 5/8" | 16 | 2.25 | 1.72 | 4.50 | 3.44 | 8.75 | 6.69 | |
| | TEE/PLUG | 50,265 | 22,800 | 50 | 4.64 | 25 | 2.32 | 12 | 1.18 | 6 | 0.56 | 3 | 0.28 | 2 | 0.18 | 4 | 5/8" | 16 | 2.25 | 1.72 | 4.50 | 3.44 | 8.75 | 6.69 | |

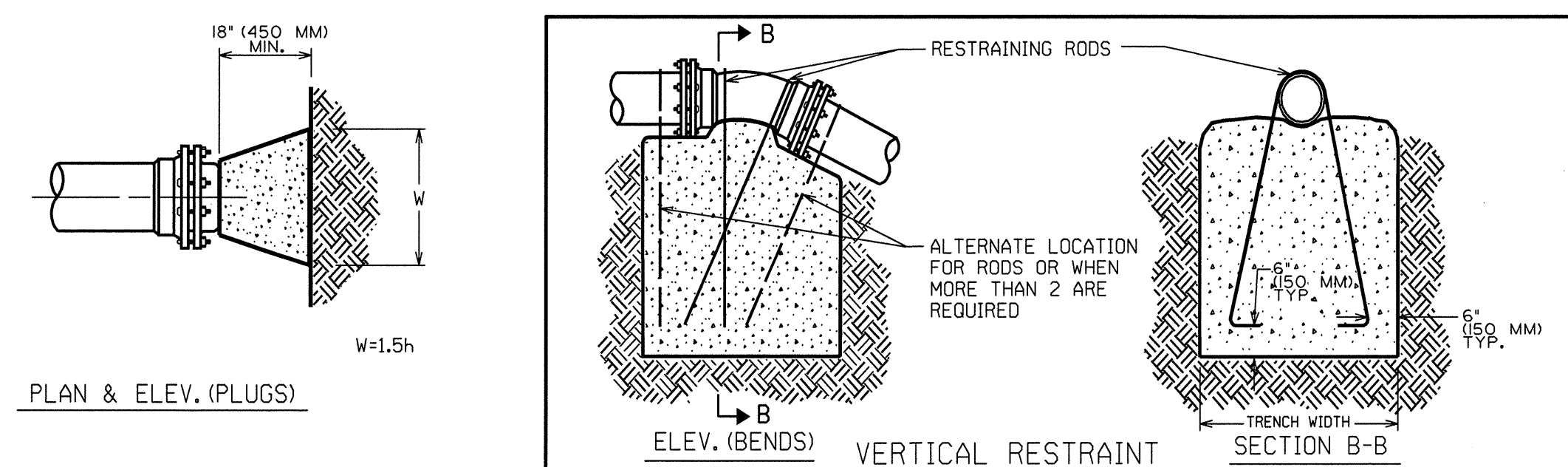
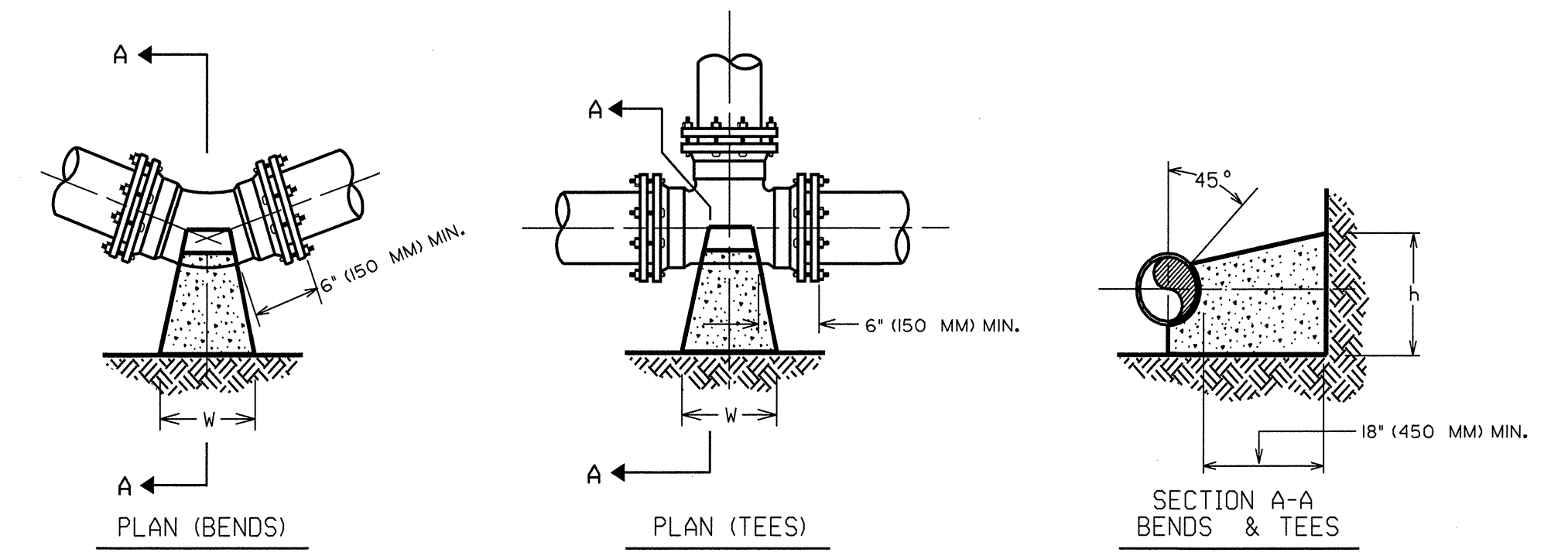
* INCLUDES 1.25 SAFETY FACTOR

GENERAL NOTES:
 1. CONCRETE SHALL BE CLASS "B".
 2. CONCRETE SHALL NOT CONTACT BOLTS ENDS OF MECHANICAL JOINT FITTINGS.
 3. CONSULT WITH ENGINEER FOR CONCRETE REQUIREMENTS ON MAINS LARGER THAN 16" (400 MM). (FOR VERTICAL & HORIZONTAL BENDS)
 4. ALLOWABLE SOIL BEARING SHALL BE DETERMINED BY THE ENGINEER.

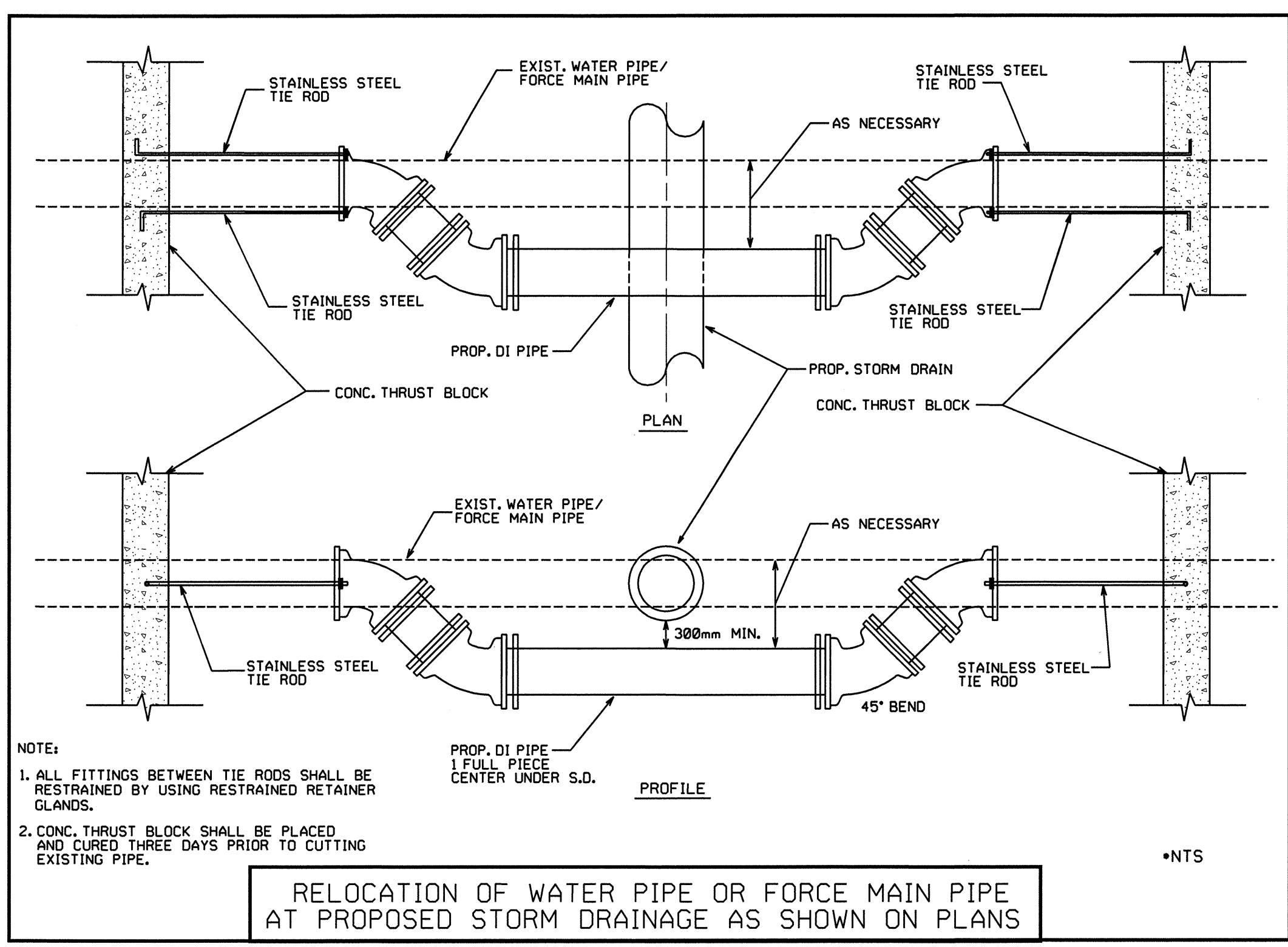
| REVISIONS | |
|-----------|-------------|
| NO. | DESCRIPTION |
| | |
| | |

THRUST RESTRAINT FOR PIPE LINES

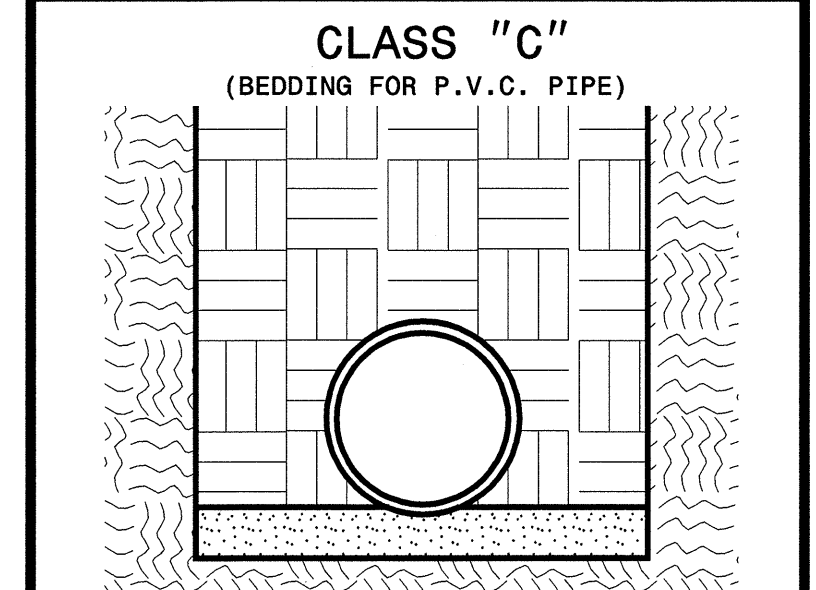
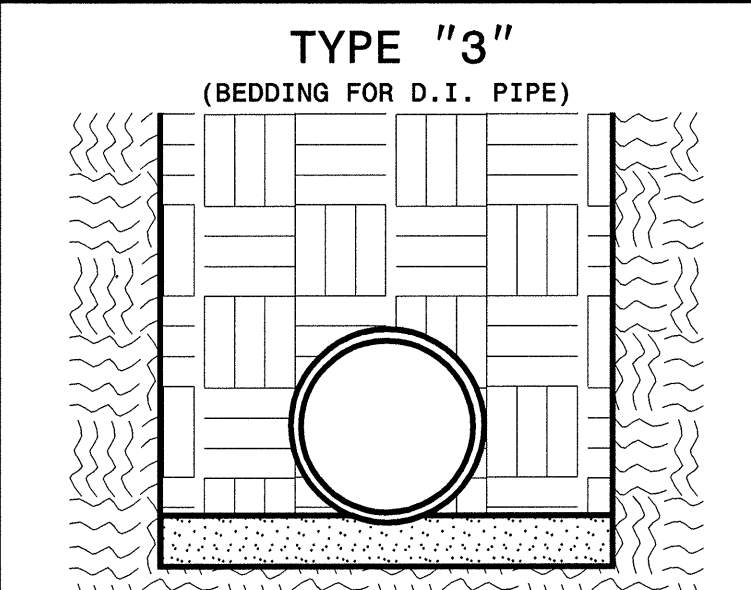
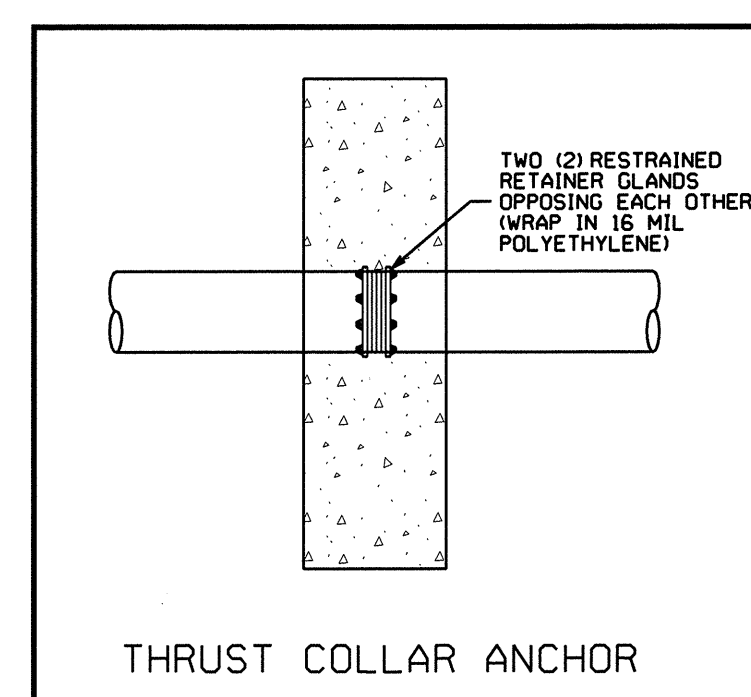
STATE OF NORTH CAROLINA
 DIVISION OF HIGHWAYS
 RALEIGH, N.C.



THRUST RESTRAINT FOR PIPE LINES

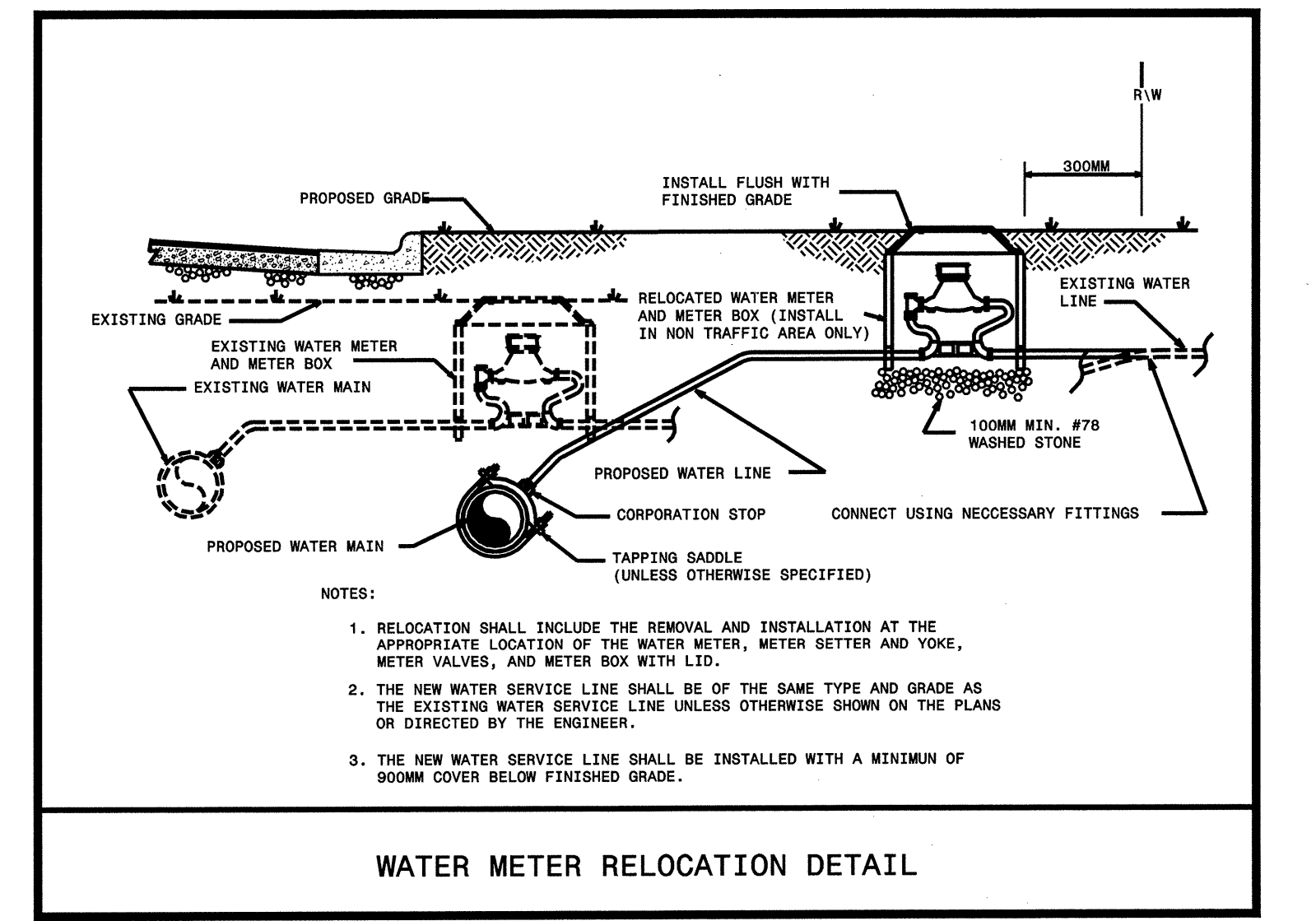
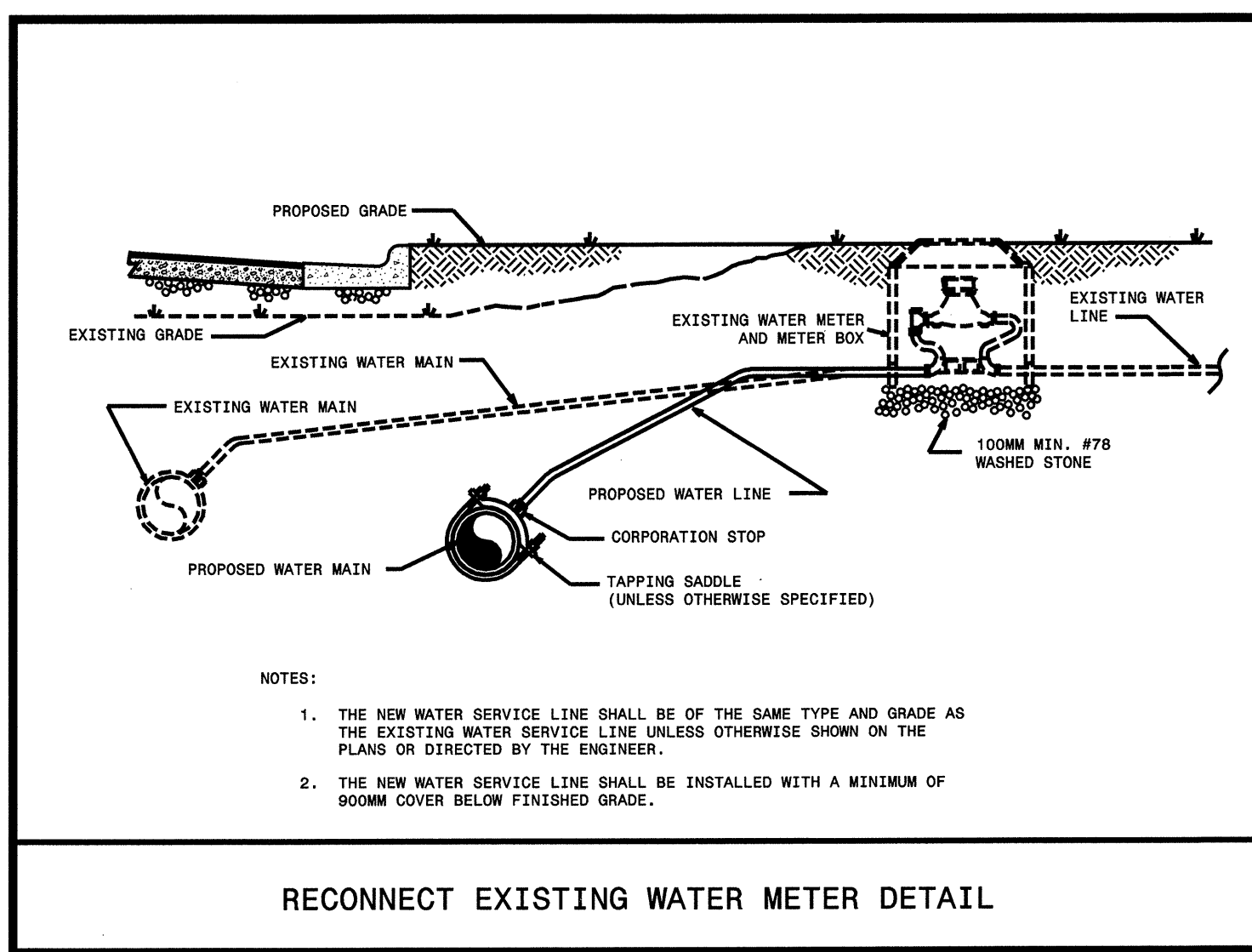


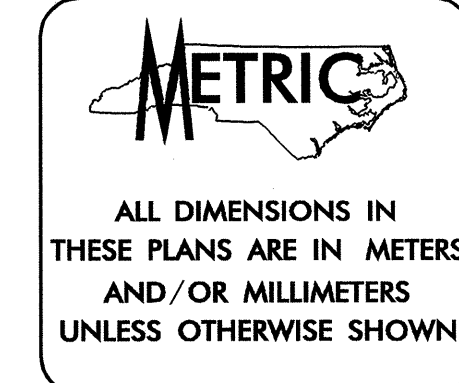
RELOCATION OF WATER PIPE OR FORCE MAIN PIPE AT PROPOSED STORM DRAINAGE AS SHOWN ON PLANS



PIPE BEDDED IN 100mm MINIMUM LOOSE SOIL. TRENCH BACKFILLED IN LOOSE 150mm LAYERS COMPACTED TO TOP OF TRENCH USING LOCAL EXCAVATED MATERIAL. IF APPROVED BY THE ENGINEER, OR SELECT MATERIAL. ALL MATERIAL SHALL BE FREE OF ROCKS, FOREIGN MATERIAL, AND FROZEN EARTH. COMPACTION SHALL BE TO APPROX. 95% DENSITY IN ACCORDANCE WITH AASHTO T-99 AS MODIFIED BY THE DEPARTMENT OF TRANSPORTATION.

PIPE BEDDED IN LOOSE MATERIAL, LIGHTLY TAMPED WITH A MINIMUM OF 150mm UNDER PIPE. TRENCH BACKFILLED IN LOOSE 150mm LAYERS COMPACTED TO TOP OF TRENCH USING LOCAL EXCAVATED MATERIAL, IF APPROVED BY THE ENGINEER, OR SELECT MATERIAL. ALL MATERIAL SHALL BE FREE OF ROCKS, FOREIGN MATERIAL, AND FROZEN EARTH. COMPACTION SHALL BE TO APPROX. 95% DENSITY IN ACCORDANCE WITH AASHTO T-99 AS MODIFIED BY THE DEPARTMENT OF TRANSPORTATION.





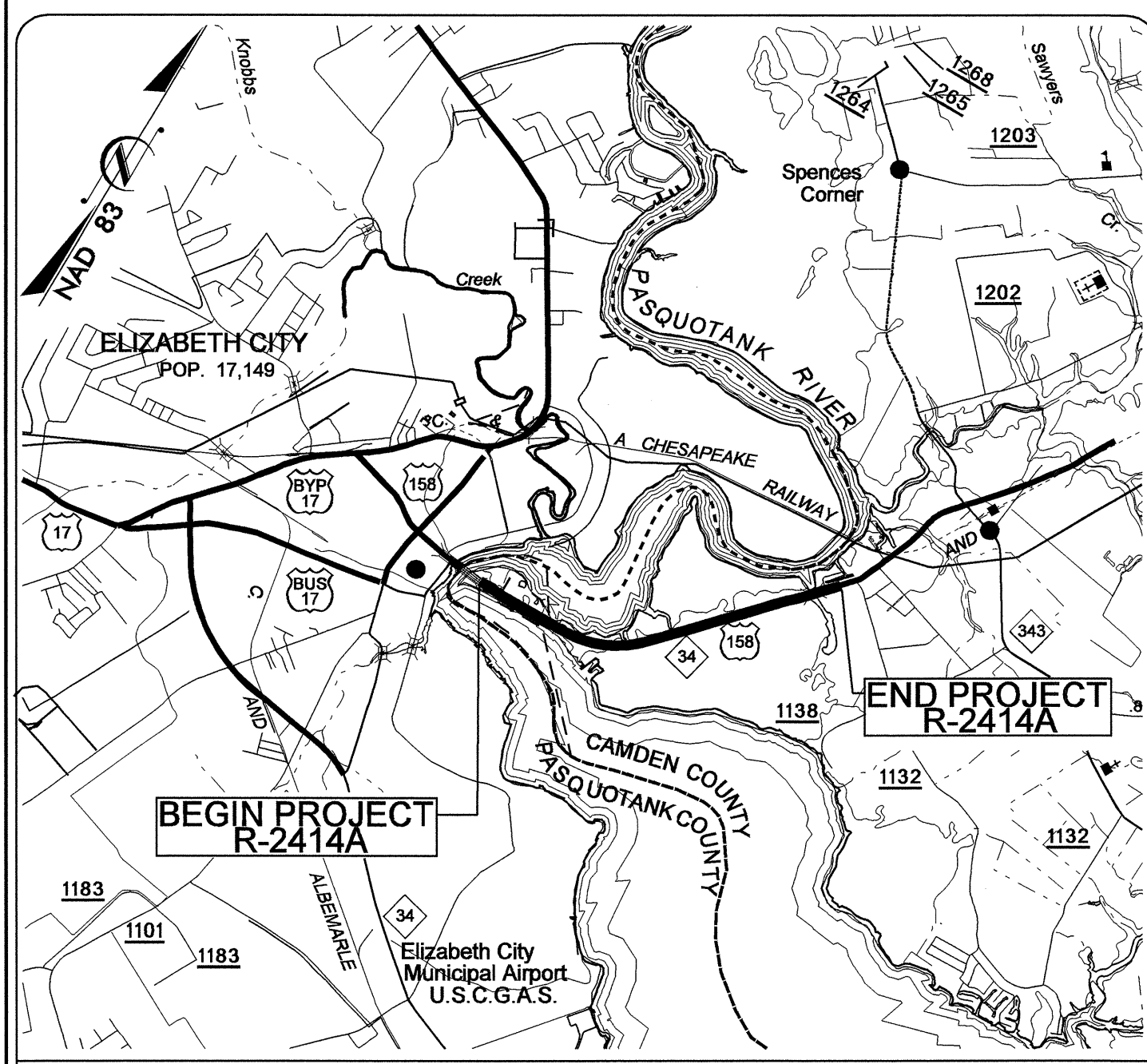
| | |
|------------|-----------|
| T.I.P. NO. | SHEET NO. |
| R-2414A | UO-1 |

STATE OF NORTH CAROLINA
DIVISION OF HIGHWAYS

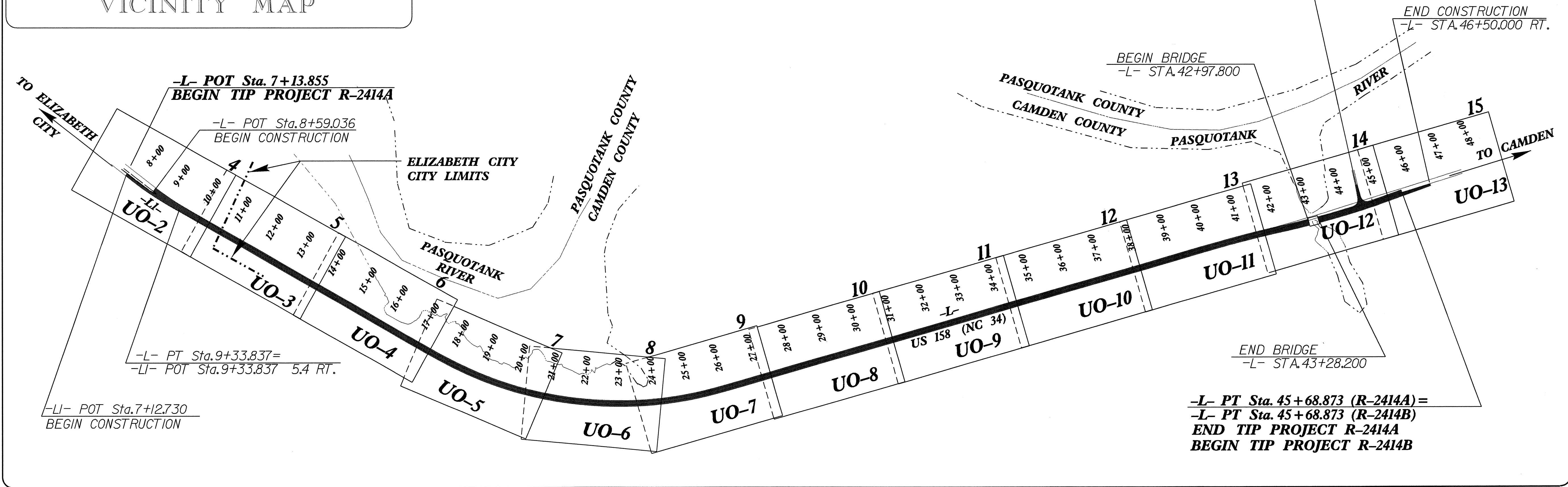
**UTILITY BY OTHERS PLANS
CAMDEN COUNTY**

LOCATION: US 158 / NC 34 FROM EAST OF PASQUOTANK RIVER TO NORTH OF SR 1257 (HAVENWOOD DR.) BETWEEN ELIZABETH CITY AND CAMDEN

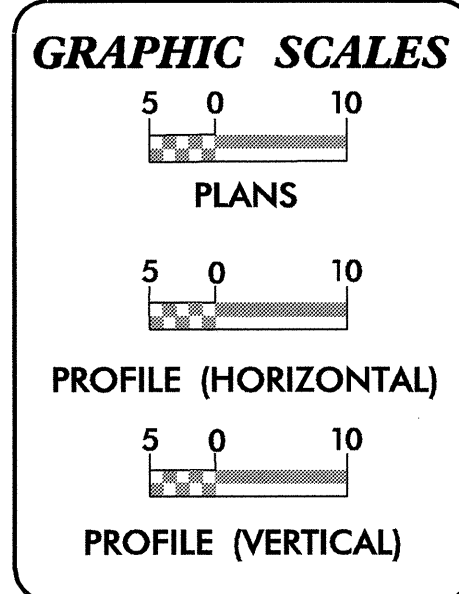
TYPE OF WORK: RELOCATION OF POWER LINES, TELEPHONE LINES & CATV LINES



VICINITY MAP



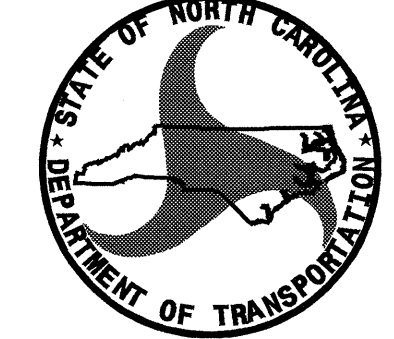
PROJECT: R-2414A



1

| INDEX OF SHEETS | |
|-----------------|-------------------------------|
| SHEET NO. | DESCRIPTION |
| UO-1 | TITLE SHEET |
| UO-2 THRU UO-13 | UTILITY BY OTHERS PLAN SHEETS |

- UTILITY OWNERS ON PROJECT**
- DOMINION N.C. POWER
 - PIEDMONT NATURAL GAS
 - EMBARQ TELEPHONE
 - CITY OF ELIZABETH CITY POWER
 - MEDIACOM CATV
 - TIME WARNER CATV
 - CHARTER CATV

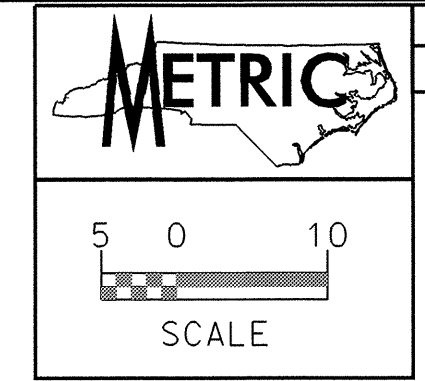


PREPARED IN THE OFFICE OF:
**DIVISION OF HIGHWAYS
DESIGN SERVICES
UTILITY SECTION**

1591 MAIL SERVICES CENTER
RALEIGH NC 27699-1591
PHONE (919) 256-4128
FAX (919) 256-4119

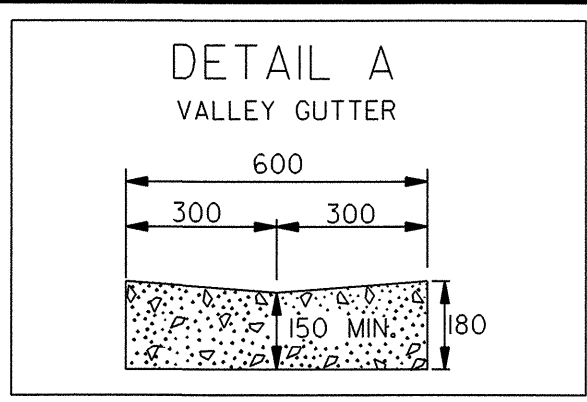
Roger Worthington, P.E. UTILITIES SECTION ENGINEER
Corey Bousquet, P.E. UTILITIES SQUAD LEADER PROJECT ENGINEER
Kifah Kamil UTILITIES PROJECT DESIGNER

05-NOV-2008 08:08 2414a\utilities\rdj\ut\proj\N-2414a_ut_uo1.tsh.dgn



UTILITIES BY OTHERS

NOTE:
ALL PROPOSED UTILITY WORK SHOWN ON THIS SHEET WILL BE DONE BY OTHERS



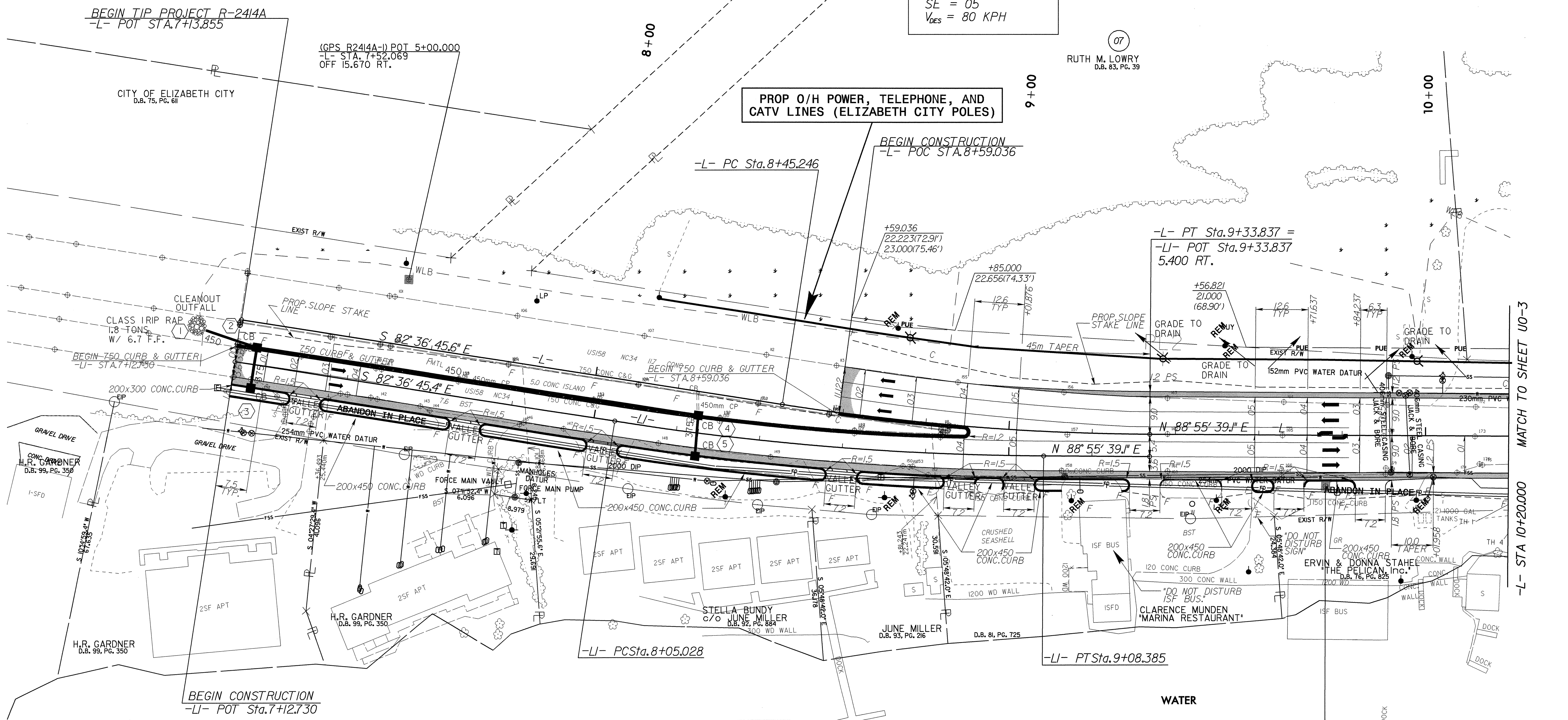
- LI- RT 7+25.6 TO 7+35.9
- LI- RT 7+64.5 TO 7+74.7
- LI- RT 7+97.8 TO 8+08.0
- LI- RT 8+55.3 TO 8+65.4
- LI- RT 8+83.3 TO 8+93.5
- LI- RT 8+97.6 TO 9+07.7

-L-
PI Sta. 8+89.622
 $\Delta = 8^{\circ} 27' 35.5'' (LT)$
L = 88.591
T = 44.376
R = 600.000
SE = 05
V_{DES} = 80 KPH

8+00

9+00

10+00



-LI-
PI Sta. 8+56.800
 $\Delta = 8^{\circ} 27' 35.5'' (LT)$
L = 103.357
T = 51.772
R = 700.000
SE = 05
V_{DES} = 80 KPH

-BL- #1PINC 7+25.554
-L- STA. 9+76.098
OFF 12.260 LT.

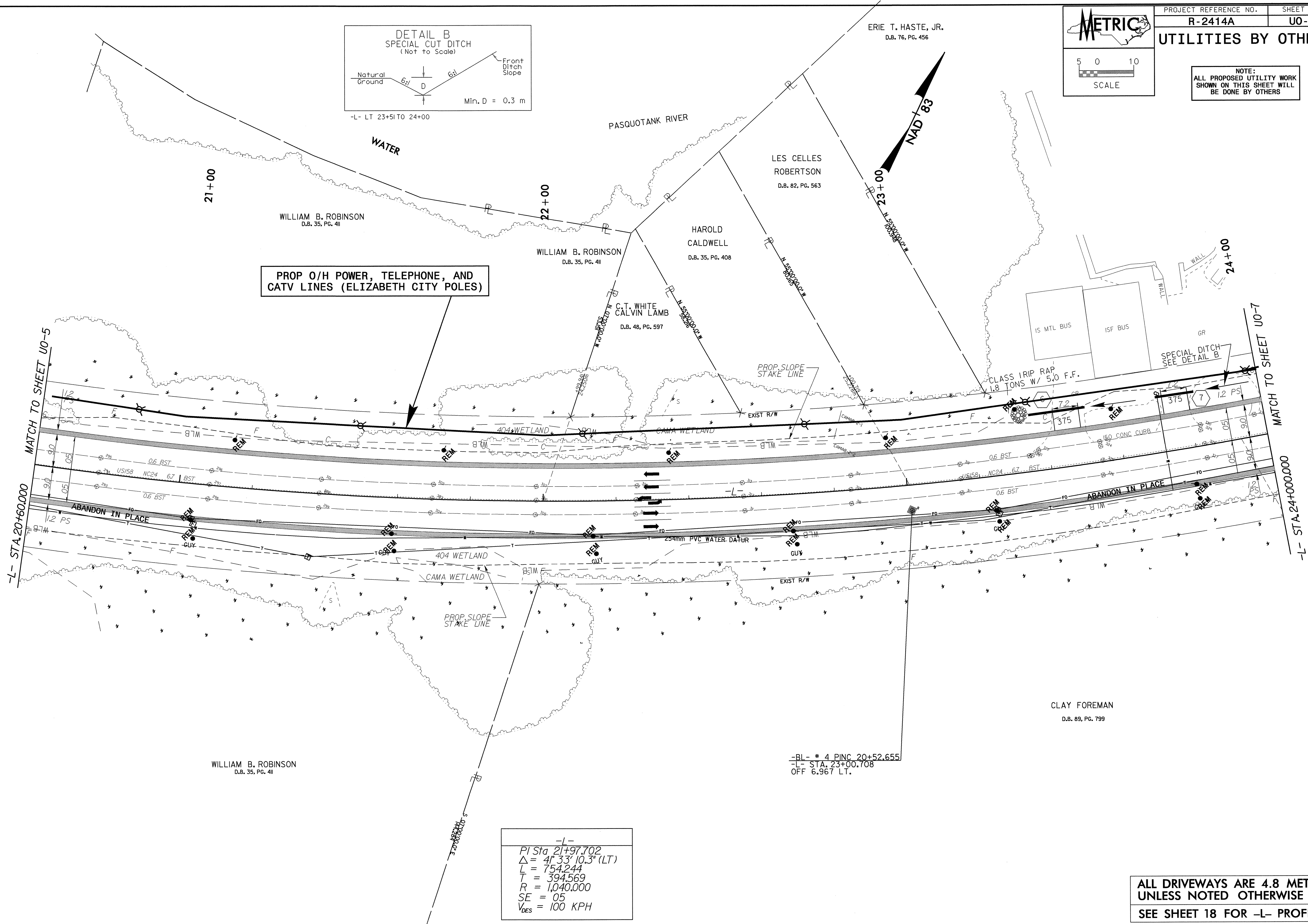
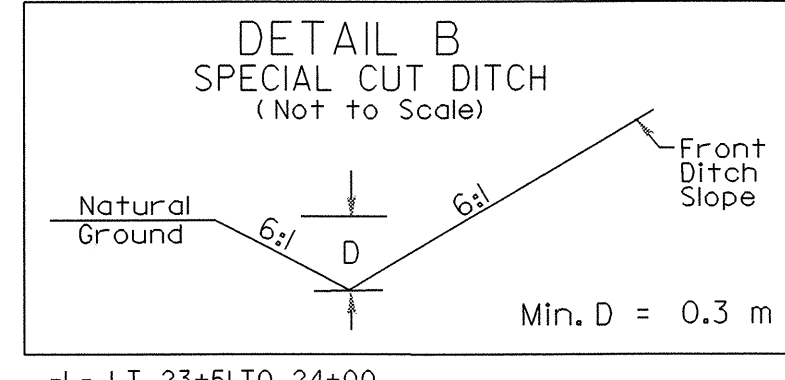
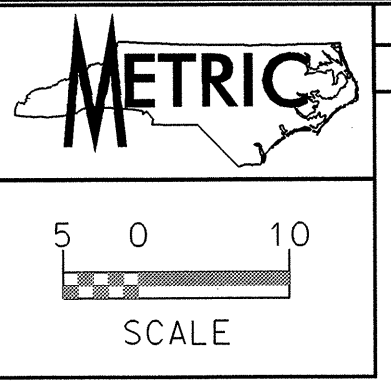
ALL DRIVEWAYS ARE 4.8 METERS UNLESS NOTED OTHERWISE
SEE SHEET 16 FOR -LI- PROFILE
SEE SHEET 16 FOR -L- PROFILE

MATCH TO SHEET U0-3
-L- STA 10+20.000

05-NOV-2008 08:07
25:\super\p\proj\2414a\ut\ut-2414a-ut-uo2.psd.dgn
11/11/08 11:11:11 AM

UTILITIES BY OTHERS

NOTE:
ALL PROPOSED UTILITY WORK
SHOWN ON THIS SHEET WILL
BE DONE BY OTHERS



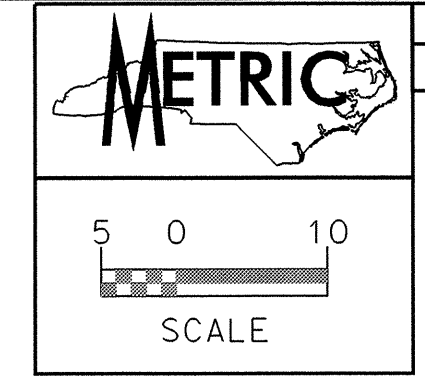
PROP O/H POWER, TELEPHONE, AND CATV LINES (ELIZABETH CITY POLES)

| |
|---------------------------------------|
| -L- |
| PI Sta 21+97.702 |
| $\Delta = 41^{\circ} 33' 10.3''$ (LT) |
| $L = 754.244$ |
| $T = 394.569$ |
| $R = 1,040.000$ |
| SE = 05 |
| $V_{DES} = 100$ KPH |

-BL- # 4 PINC 20+52.655
-L- STA. 23+00.708
OFF 6.967 LT.

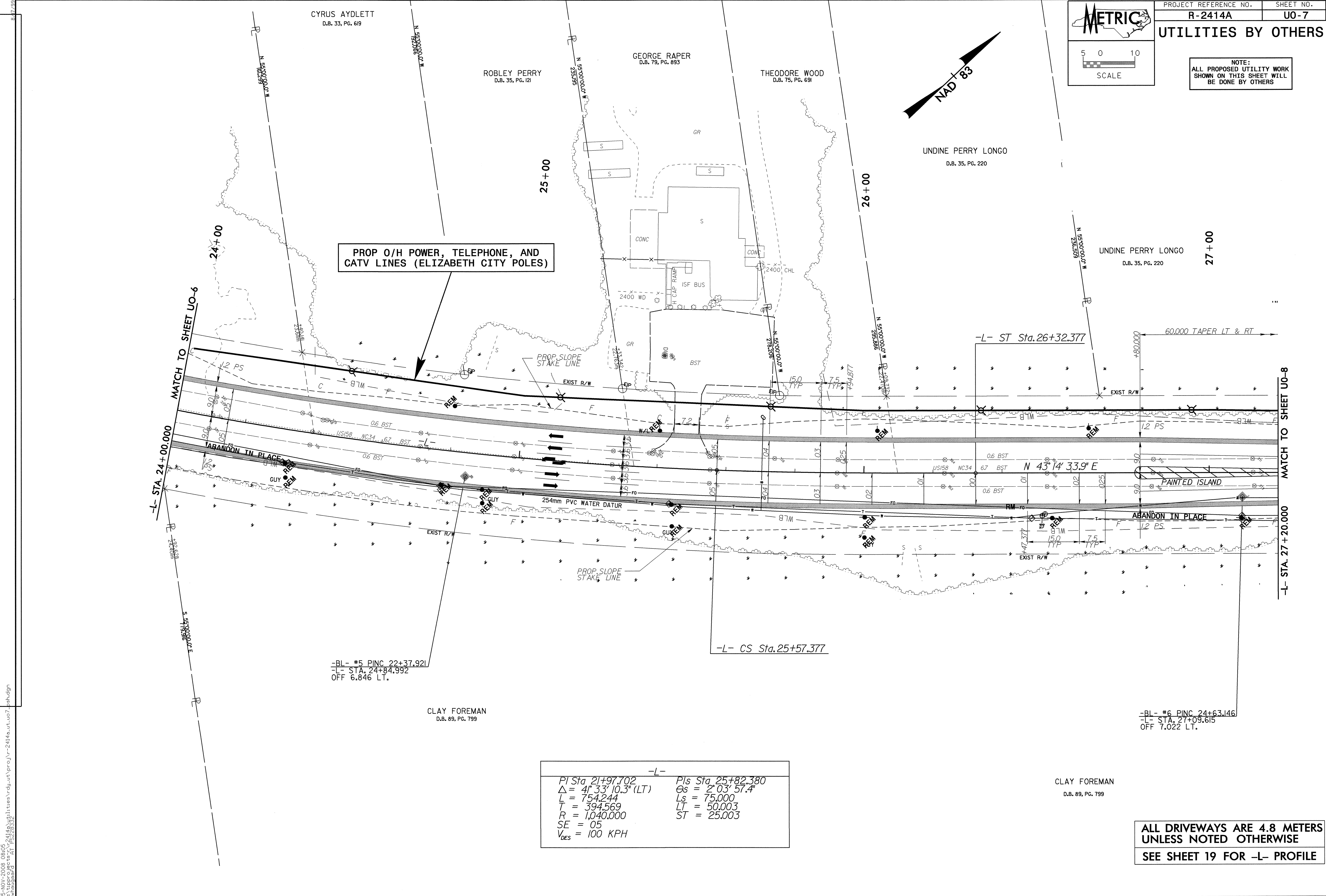
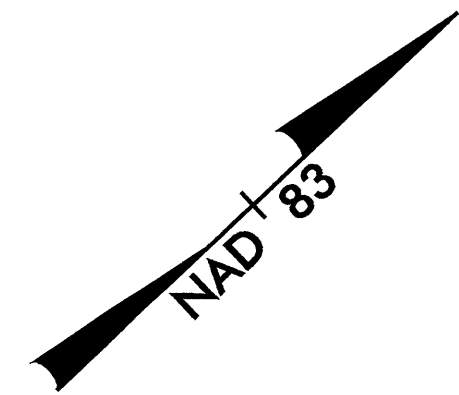
ALL DRIVEWAYS ARE 4.8 METERS
UNLESS NOTED OTHERWISE
SEE SHEET 18 FOR -L- PROFILE

06-NOV-2008 08:05
 z:\supercg\projects\2414a\utilities\rdy\ut\proj\N-2414a_ut_uo6_psh.dgn
 15252032



UTILITIES BY OTHERS

NOTE:
ALL PROPOSED UTILITY WORK
SHOWN ON THIS SHEET WILL
BE DONE BY OTHERS



PROP O/H POWER, TELEPHONE, AND
CATV LINES (ELIZABETH CITY POLES)

-L- ST Sta.26+32.377

-L- CS Sta.25+57.377

-BL- #5 PINC 22+37.921
-L- STA. 24+84.992
OFF 6.846 LT.

-BL- #6 PINC 24+63.146
-L- STA. 27+09.615
OFF 7.022 LT.

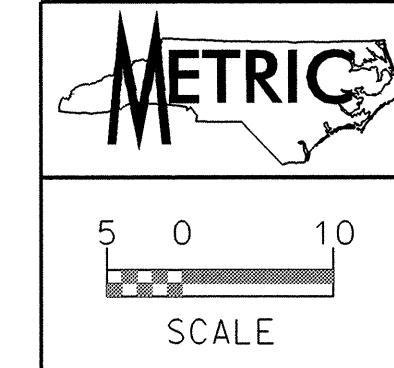
| | |
|--------------------------------------|-----------------------------------|
| -L- | |
| PI Sta 21+97.702 | PIs Sta 25+82.380 |
| $\Delta = 4^{\circ} 33' 10.3''$ (LT) | $\Theta_s = 2^{\circ} 03' 57.4''$ |
| L = 754.244 | Ls = 75.000 |
| T = 394.569 | LT = 50.003 |
| R = 1,040.000 | ST = 25.003 |
| SE = 05 | |
| V _{DES} = 100 KPH | |

CLAY FOREMAN
D.B. 89, PG. 799

ALL DRIVEWAYS ARE 4.8 METERS
UNLESS NOTED OTHERWISE
SEE SHEET 19 FOR -L- PROFILE

REVISIONS

05-NOV-2008 08:05
Z:\projects\2414a\utilities\rdy-ut\proj\2414a-ut-u07_bsh.dgn
shd\shd

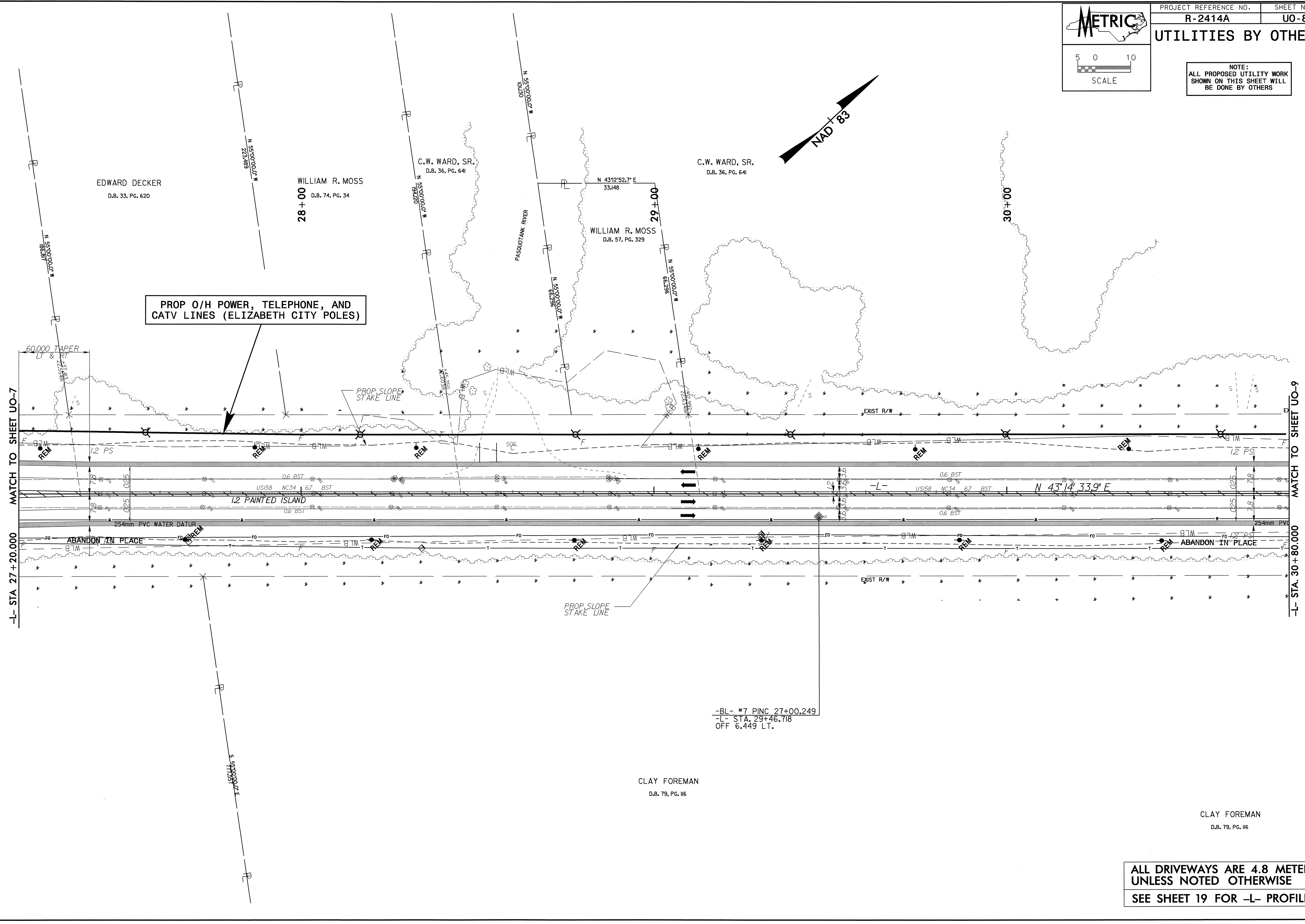


UTILITIES BY OTHERS

NOTE:
ALL PROPOSED UTILITY WORK
SHOWN ON THIS SHEET WILL
BE DONE BY OTHERS

05-NOV-2008 08:05 z:\supersite\proj\2414a\dwg\util\util.dwg 2414a-ut-uo8_psh.dgn

REVISIONS



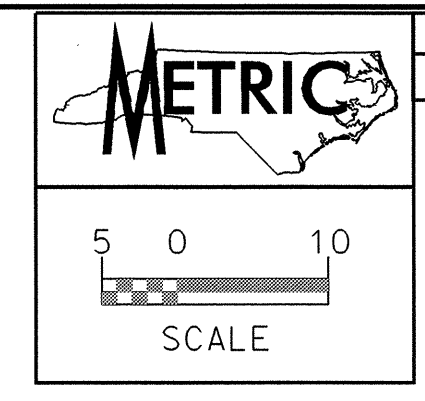
-BL- #7 PINC 27+00.249
-L- STA. 29+46.718
OFF 6,449 LT.

CLAY FOREMAN
D.B. 79, PG. 116

CLAY FOREMAN
D.B. 79, PG. 116

ALL DRIVEWAYS ARE 4.8 METERS
UNLESS NOTED OTHERWISE
SEE SHEET 19 FOR -L- PROFILE

05-NOV-2008 08:04
 23: \\prc09\projects\11\trees\rdj\ut\proj\N-2414a\ut\uo10_psh.dgn
 11/23/08 11:25:33 AM

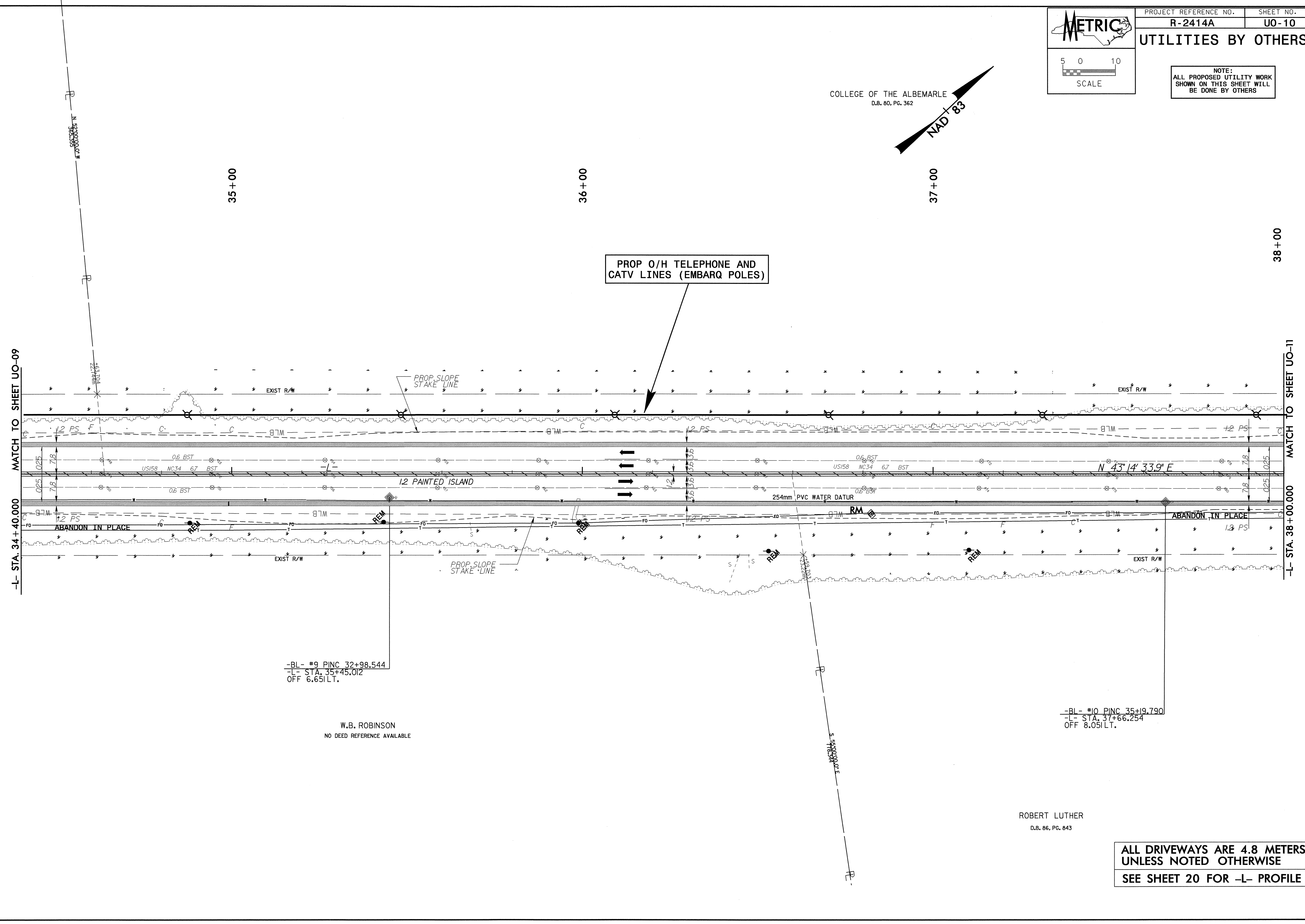
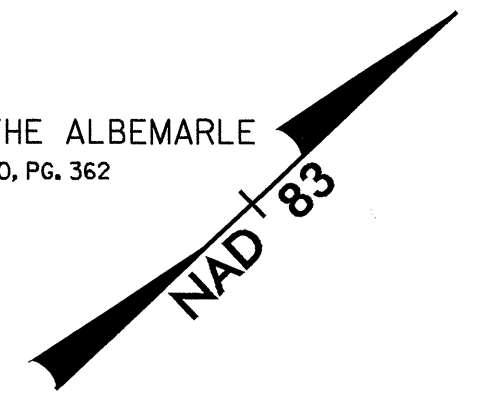


| | |
|----------------------------------|--------------------|
| PROJECT REFERENCE NO. R-2414A | SHEET NO. UO-10 |
|----------------------------------|--------------------|

UTILITIES BY OTHERS

NOTE:
 ALL PROPOSED UTILITY WORK
 SHOWN ON THIS SHEET WILL
 BE DONE BY OTHERS

COLLEGE OF THE ALBEMARLE
 D.B. 80, PG. 362



MATCH TO SHEET UO-09
 -L- STA. 34+40.000

MATCH TO SHEET UO-11
 -L- STA. 38+00.000

REVISIONS

-BL- #9 PINC 32+98.544
 -L- STA. 35+45.012
 OFF 6.651LT.

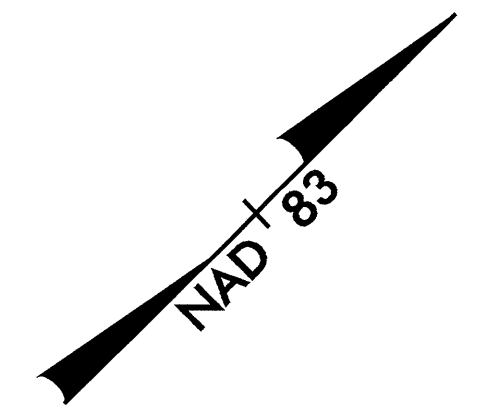
-BL- #10 PINC 35+19.790
 -L- STA. 37+66.254
 OFF 8.051LT.

W.B. ROBINSON
 NO DEED REFERENCE AVAILABLE

ROBERT LUTHER
 D.B. 86, PG. 643

**ALL DRIVEWAYS ARE 4.8 METERS
 UNLESS NOTED OTHERWISE**
SEE SHEET 20 FOR -L- PROFILE

COLLEGE OF THE ALBEMARLE
D.B. 80, PG. 362

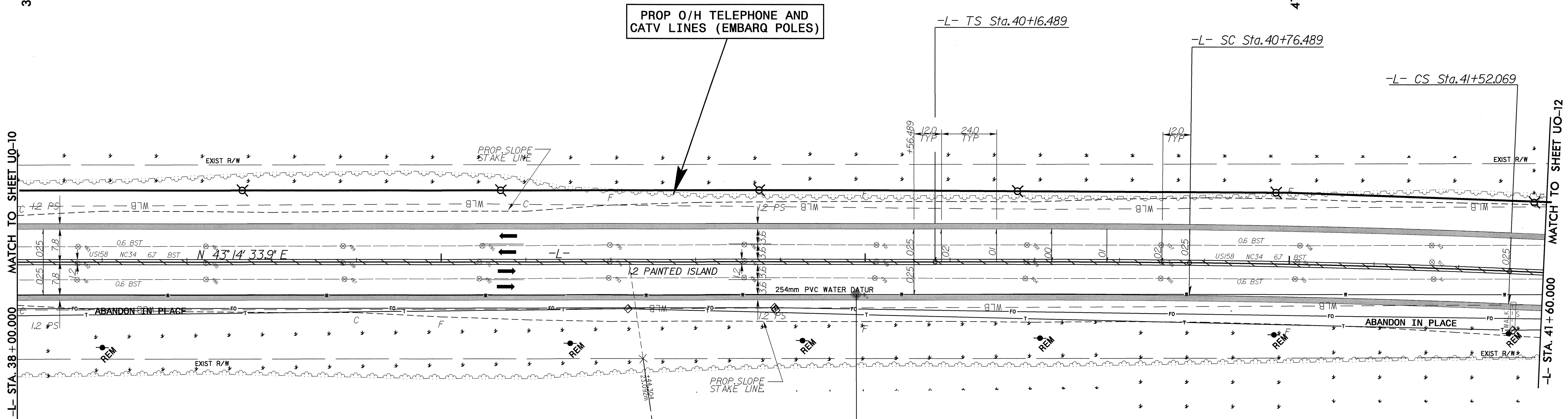


38+00

39+00

40+00

41+00



MATCH TO SHEET UO-10

-L- STA. 38+00.000

MATCH TO SHEET UO-12

-L- STA. 41+60.000

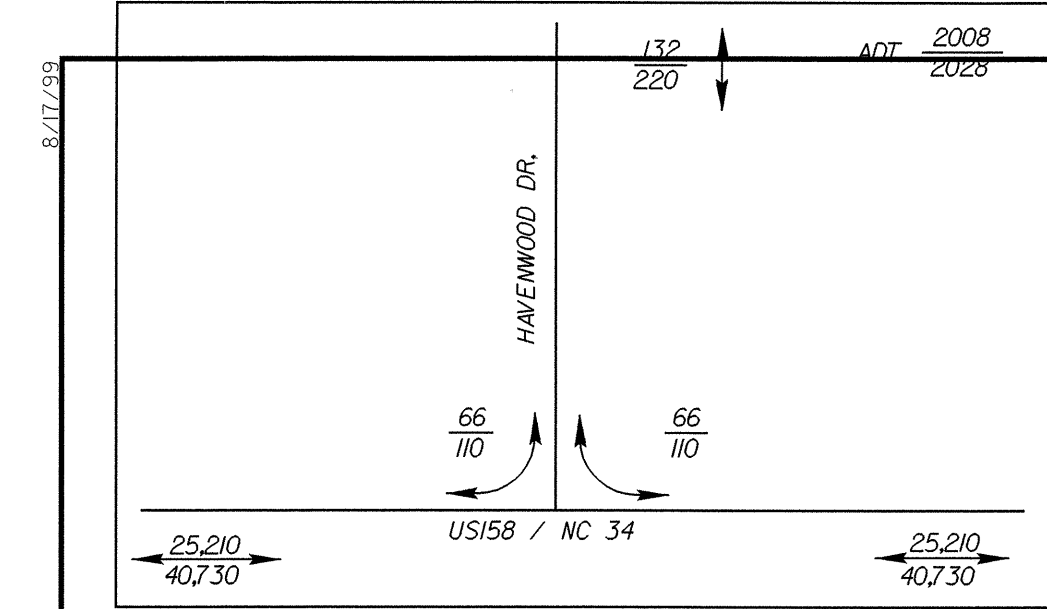
ROBERT LUTHER
D.B. 86, PG. 843

| | | |
|-----------------------------------|--------------------------------------|-----------------------------------|
| <i>Pls Sta.</i> 40+56.489 | <i>PI Sta.</i> 41+14.282 | <i>Pls Sta.</i> 41+72.069 |
| $\Theta_s = 0^{\circ} 41' 15.2''$ | $\Delta = 1^{\circ} 43' 55.8'' (RT)$ | $\Theta_s = 0^{\circ} 41' 15.2''$ |
| $L_s = 60.000$ | $L = 75.580$ | $L_s = 60.000$ |
| $LT = 40.000$ | $T = 37.793$ | $LT = 40.000$ |
| $ST = 20.000$ | $R = 2,500.000$ | $ST = 20.000$ |
| | $SE = RC$ | |
| | $V_{DES} = 100 KPH$ | |

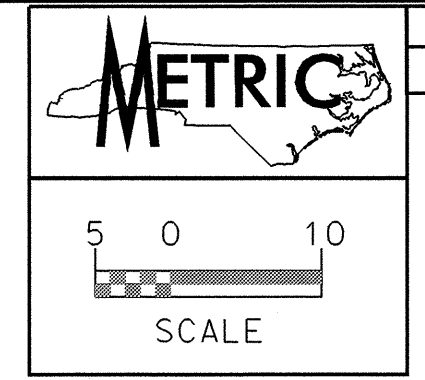
03
PECAN FARMS, LLC
D.B. 237, PG. 728

ALL DRIVEWAYS ARE 4.8 METERS UNLESS NOTED OTHERWISE
SEE SHEET 21 FOR -L- PROFILE

05-NOV-2008 08:03
 z:\bpr\p\ge-1571...
 2414a_utoo1_psh.dgn
 8:17:08



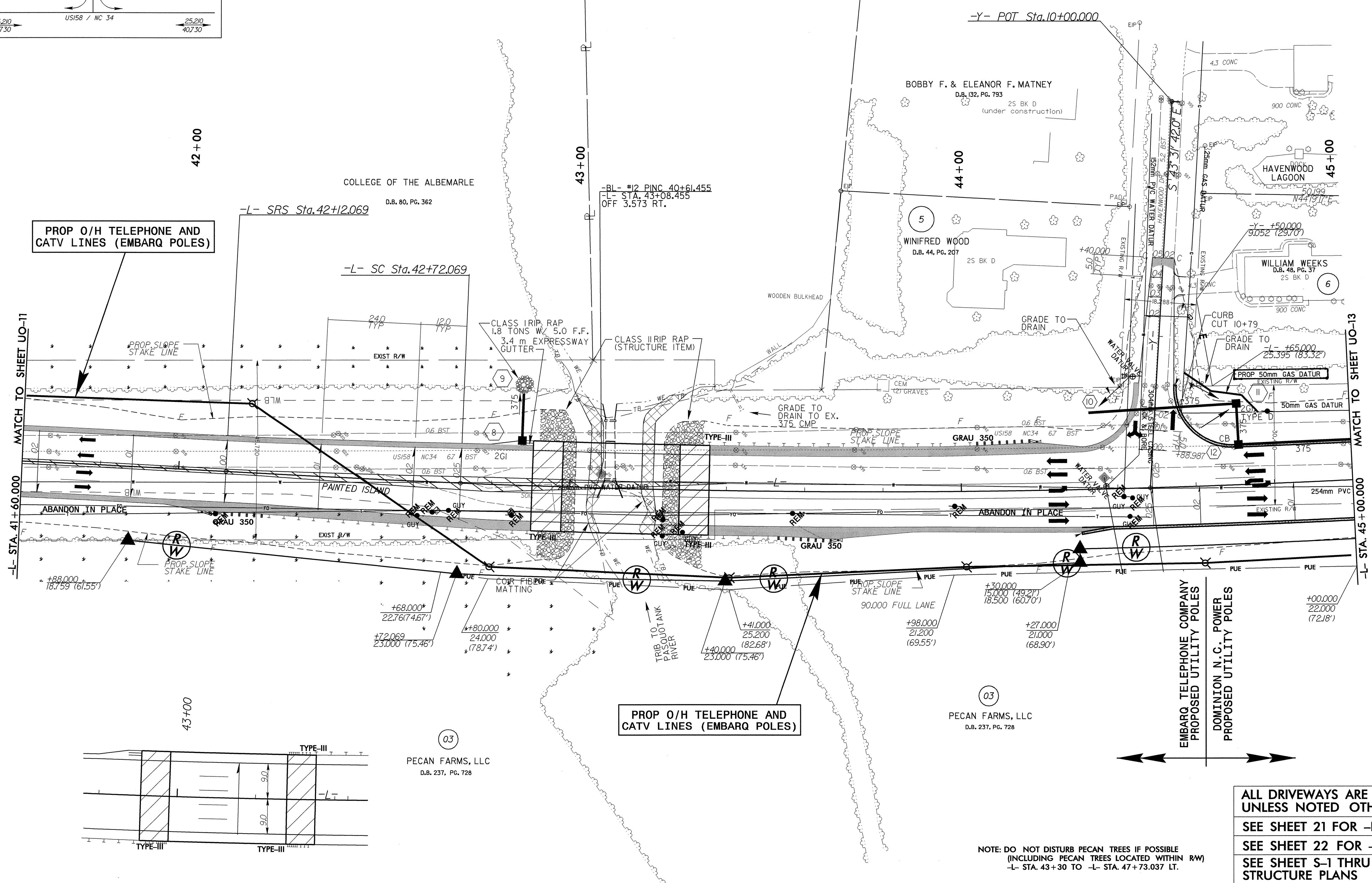
| | | |
|--|--|--|
| PIs Sta. 41+72.069 Os = 0° 41' 15.2" Ls = 60.000 LT = 40.000 ST = 20.000 | PIs Sta. 42+52.069 Os = 0° 41' 15.2" Ls = 60.000 LT = 40.000 ST = 20.000 | PI Sta. 44+20.646 Δ = 6° 48' 08.1" (LT) L = 296.804 T = 148.577 R = 2,500.000 SE = RC V _{DES} = 100 KPH |
|--|--|--|



PROJECT REFERENCE NO. R-2414A
SHEET NO. U0-12

UTILITIES BY OTHERS

NOTE:
ALL PROPOSED UTILITY WORK
SHOWN ON THIS SHEET WILL
BE DONE BY OTHERS

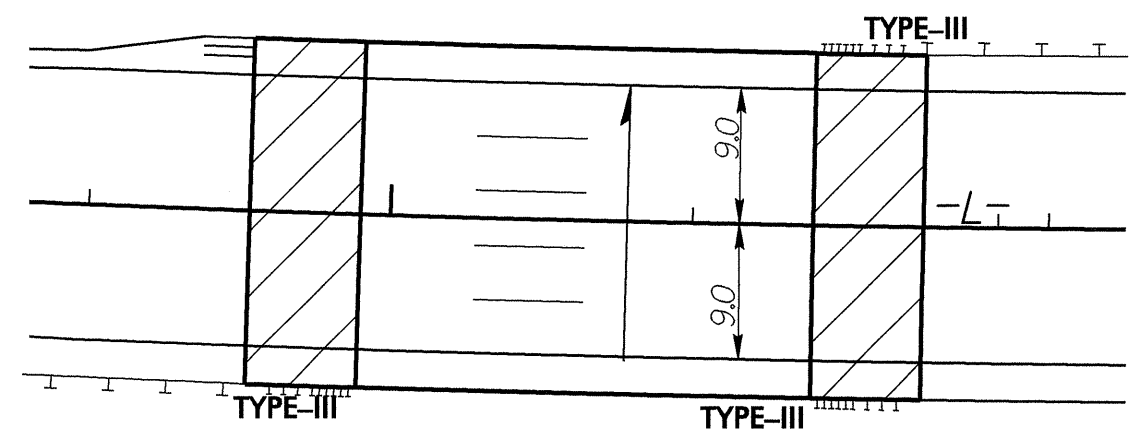


PROP O/H TELEPHONE AND CATV LINES (EMBARQ POLES)

PROP O/H TELEPHONE AND CATV LINES (EMBARQ POLES)

EMBARQ TELEPHONE COMPANY
PROPOSED UTILITY POLES

DOMINION N.C. POWER
PROPOSED UTILITY POLES



ALL DRIVEWAYS ARE 4.8 METERS UNLESS NOTED OTHERWISE

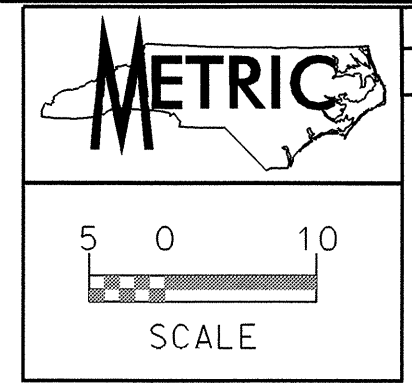
SEE SHEET 21 FOR -L- PROFILE

SEE SHEET 22 FOR -Y- PROFILE

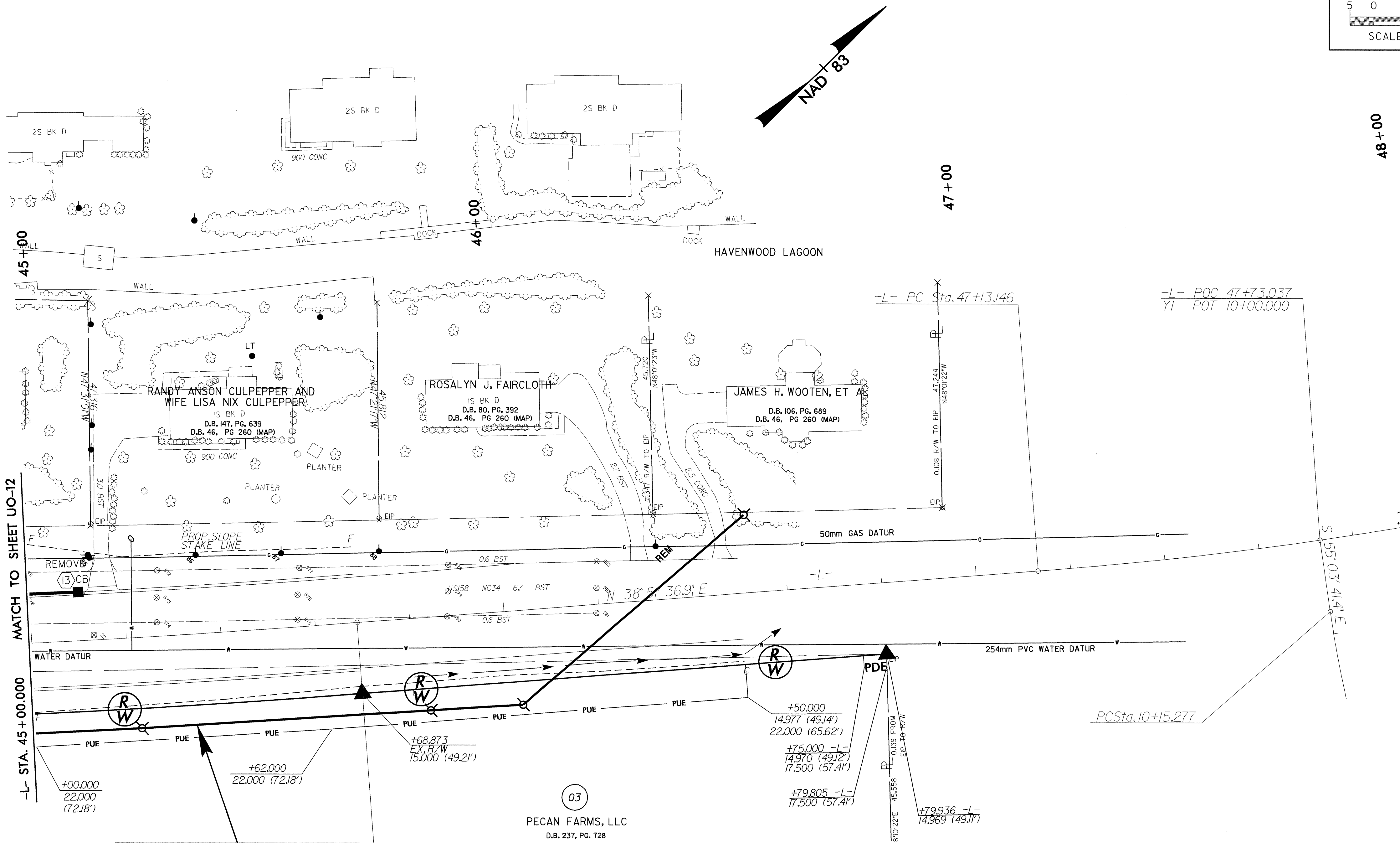
SEE SHEET S-1 THRU S-__ FOR STRUCTURE PLANS

NOTE: DO NOT DISTURB PECAN TREES IF POSSIBLE (INCLUDING PECAN TREES LOCATED WITHIN R/W)
-L- STA. 43+30 TO -L- STA. 47+73.037 LT.

05-NOV-2008 08:03 2414a.dwg \\s1\proj\2414a\ut\2414a_ut_u012.psh.dgn



NOTE:
 ALL PROPOSED UTILITY WORK
 SHOWN ON THIS SHEET WILL
 BE DONE BY OTHERS



MATCH TO SHEET UO-12

-L- STA. 45+00.000

+00.000
22.000 (72.18')

+62.000
22.000 (72.18')

+68.873
EX. R/W
15.000 (49.21')

+50.000
14.977 (49.14')
22.000 (65.62')

+75.000 -L-
14.970 (49.12')
17.500 (57.41')

+79.805 -L-
17.500 (57.41')

+79.936 -L-
14.969 (49.11')

PROP O/H TELEPHONE AND CATV LINES (DOMINION N.C. POLES)

-L- PT STA. 45+68.873 (R-2414A) L.B. =
 -L- POT STA. 45+68.873 (R-2414B) L.A.
 N 288,267.5799 E 862835.4768
 BEGIN STATE PROJECT R-2414B
 END STATE PROJECT R-2414A

PECAN FARMS, LLC
 D.B. 237, PG. 728

R-2414B
 PI Sta 48+39.173
 $\Delta = 16' 23' 31.2''$ (LT)
 L = 250.333
 T = 126.027
 R = 875.000

-L-
 PI Sta 44+20.646
 $\Delta = 6' 48' 08.1''$ (LT)
 L = 296.804
 T = 148.577
 R = 2,500.000
 SE = RC
 $V_{DES} = 100$ KPH

-YI-
 PI Sta 10+37.521 PI Sta 10+85.741 PI Sta 11+5.669
 $\Delta = 10' 10' 10.1''$ (LT) $\Delta = 2' 32' 38.4''$ (RT) $\Delta = 11' 00' 32.5''$ (RT)
 L = 44.373 L = 21.313 L = 38.429
 T = 22.245 T = 10.658 T = 19.274
 R = 250.000 R = 480.000 R = 200.000

05 NOV 2008 08:02
 C:\Users\jg\Documents\Projects\R-2414A\ut_uo13_psh.dgn
 2414A\Utilities\Y-dj\ut_uo13_psh.dgn
 AT: P5228332