

STATE OF NORTH CAROLINA
DIVISION OF HIGHWAYS

STATE PROJECT REFERENCE NO.	SHEET NO.
B-4148	TCP-1

**PLAN FOR PROPOSED
TRAFFIC CONTROL, MARKING & DELINEATION
HENDERSON COUNTY**

ROADWAY STANDARD DRAWINGS

THE FOLLOWING ROADWAY STANDARDS AS APPEAR IN "ROADWAY STANDARD DRAWINGS"-PROJECT SERVICES UNIT-N.C. DEPARTMENT OF TRANSPORTATION-RALEIGH, N.C., DATED JULY 2006 ARE APPLICABLE TO THIS PROJECT AND BY REFERENCE HEREBY ARE CONSIDERED A PART OF THESE PLANS:

STD. NO.	TITLE
1101.03	TEMPORARY ROAD CLOSURES
1101.05	WORK ZONE VEHICLE ACCESSES
1101.11	TRAFFIC CONTROL DESIGN TABLES
1110.01	STATIONARY WORK ZONE SIGNS
1145.01	BARRICADES
1205.01	PAVEMENT MARKINGS - LINE TYPES & OFFSETS
1205.02	PAVEMENT MARKINGS - 2 LANE & MULTILANE ROADWAYS
1205.12	PAVEMENT MARKINGS - BRIDGES
1250.01	PAVEMENT MARKER SPACING
1251.01	RAISED PAVEMENT MARKERS (TEMPORARY & PERMANENT)
1261.01	GUARDRAIL & BARRIER DELINEATOR SPACING
1261.02	GUARDRAIL & BARRIER DELINEATOR TYPES
1262.01	GUARDRAIL END DELINEATION

INDEX OF SHEETS

SHEET NO.	TITLE
TCP-1	LIST OF APPLICABLE ROADWAY STANDARD DRAWING, LEGEND, INDEX OF SHEETS, GENERAL NOTES, AND PHASING
TCP-2	OFFSITE DETOUR
SD-1	SPECIAL SIGN DESIGN

LEGEND

- GENERAL**
- ← NORTH ARROW
 - TRAFFIC CONTROL DEVICES**
 - ▬ TYPE III BARRICADE
 - ⊥ STATIONARY SIGN

PHASING

- STEP 1) INSTALL ALL OFFSITE DETOUR SIGNING AND COVER.
- STEP 2) UNCOVER SIGNING (REFER TO GENERAL NOTE 'B'), USE TYPE III BARRICADES TO CLOSE -L- (SR 1329 WARLICK RD.), AND DETOUR TRAFFIC OFFSITE (SEE TCP-2). CONSTRUCT -L- UP TO AND INCLUDING THE FINAL LIFT OF SURFACE COURSE AND FINAL PAVEMENT MARKINGS.
- STEP 3) REMOVE TYPE III BARRICADES, OPEN -L- TO TRAFFIC, AND REMOVE OFFSITE DETOUR SIGNING.

GENERAL NOTES

CHANGES MAY BE REQUIRED WHEN PHYSICAL DIMENSIONS IN THE DETAIL DRAWINGS, STANDARD DETAILS AND ROADWAY DETAILS ARE NOT ATTAINABLE TO MEET FIELD CONDITIONS, OR RESULT IN DUPLICATE, OR UNDESIRED OVERLAPPING OF DEVICES. MODIFICATION MAY INCLUDE: MOVING, SUPPLEMENTING, COVERING OR REMOVAL OF DEVICES, AS DIRECTED BY THE ENGINEER.

THE FOLLOWING GENERAL NOTES APPLY AT ALL TIMES FOR THE DURATION OF THE CONSTRUCTION PROJECT, EXCEPT WHEN OTHERWISE NOTED IN THE PLAN, OR DIRECTED BY THE ENGINEER.

PAVEMENT EDGE DROP OFF REQUIREMENTS

- A) BACKFILL AT A 6:1 SLOPE UP TO THE EDGE AND ELEVATION OF EXISTING PAVEMENT IN AREAS ADJACENT TO AN OPENED TRAVEL LANE THAT HAS A DROP-OFF AS FOLLOWS:

BACKFILL DROP-OFFS THAT EXCEED 2 INCHES ON ROADWAYS WITH POSTED SPEED LIMITS OF 45 MPH OR GREATER.

BACKFILL DROP-OFFS THAT EXCEED 3 INCHES ON ROADWAYS WITH POSTED SPEED LIMITS LESS THAN 45 MPH.

BACKFILL WITH SUITABLE COMPACTED MATERIAL, AS APPROVED BY THE ENGINEER, AT NO EXPENSE TO THE DEPARTMENT.

TRAFFIC PATTERN ALTERATIONS

- B) NOTIFY THE ENGINEER TWENTY ONE (21) CALENDAR DAYS PRIOR TO ANY TRAFFIC PATTERN ALTERATION.

SIGNING

- C) STATE FORCES WILL BE RESPONSIBLE FOR PERMANENT SIGNING.
- D) PROVIDE DETOUR SIGNING OFF THE PROJECT LIMITS.
- E) THE CONTRACTOR WILL COVER OR REMOVE ALL DETOUR SIGNS OFF THE PROJECT LIMITS WHEN A DETOUR IS NOT IN OPERATION.
- F) ENSURE ALL NECESSARY SIGNING IS IN PLACE PRIOR TO ALTERING ANY TRAFFIC PATTERN.

TRAFFIC CONTROL DEVICES

- G) PLACE TYPE III BARRICADES, WITH "ROAD CLOSED" SIGN R11-2 ATTACHED, OF SUFFICIENT LENGTH TO CLOSE ENTIRE ROADWAY.

PAVEMENT MARKINGS AND MARKERS

- H) INSTALL PAVEMENT MARKINGS AND PAVEMENT MARKERS ON THE FINAL SURFACE AS FOLLOWS:

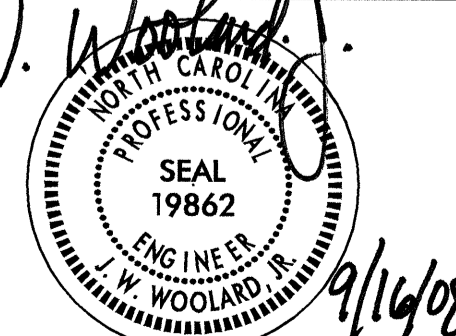
ROAD NAME	MARKING	MARKER
1. -L- (SR 1329 WARLICK RD)	PAINT	NONE

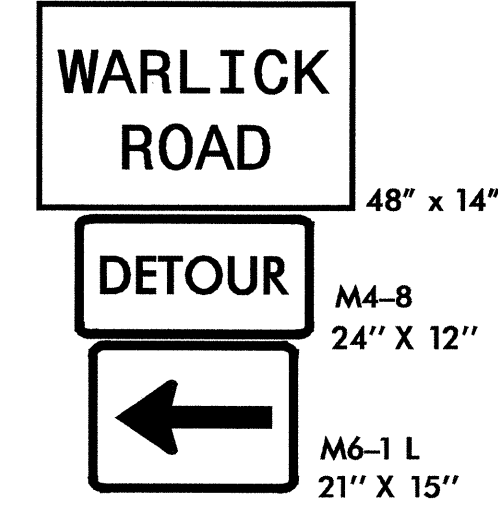
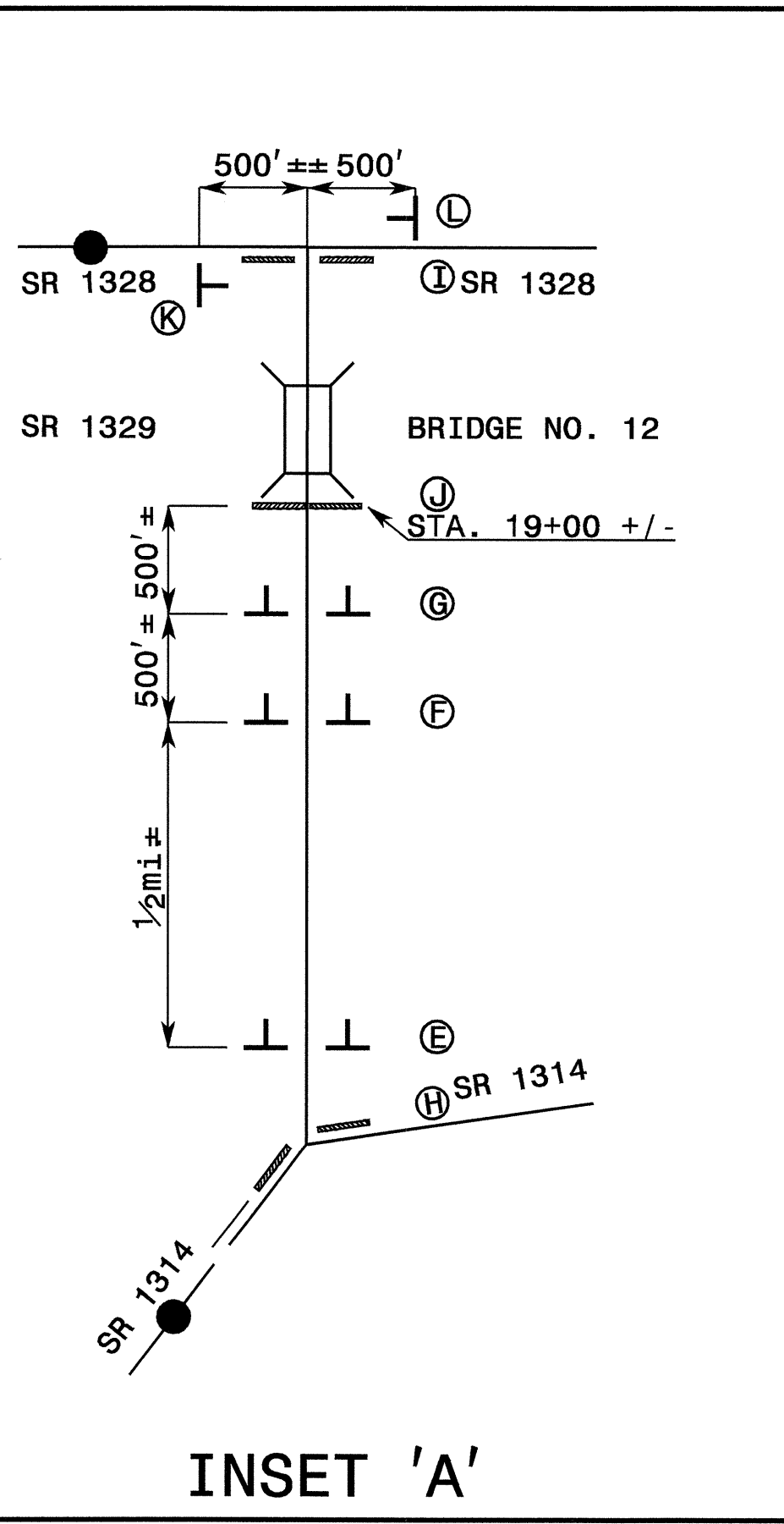
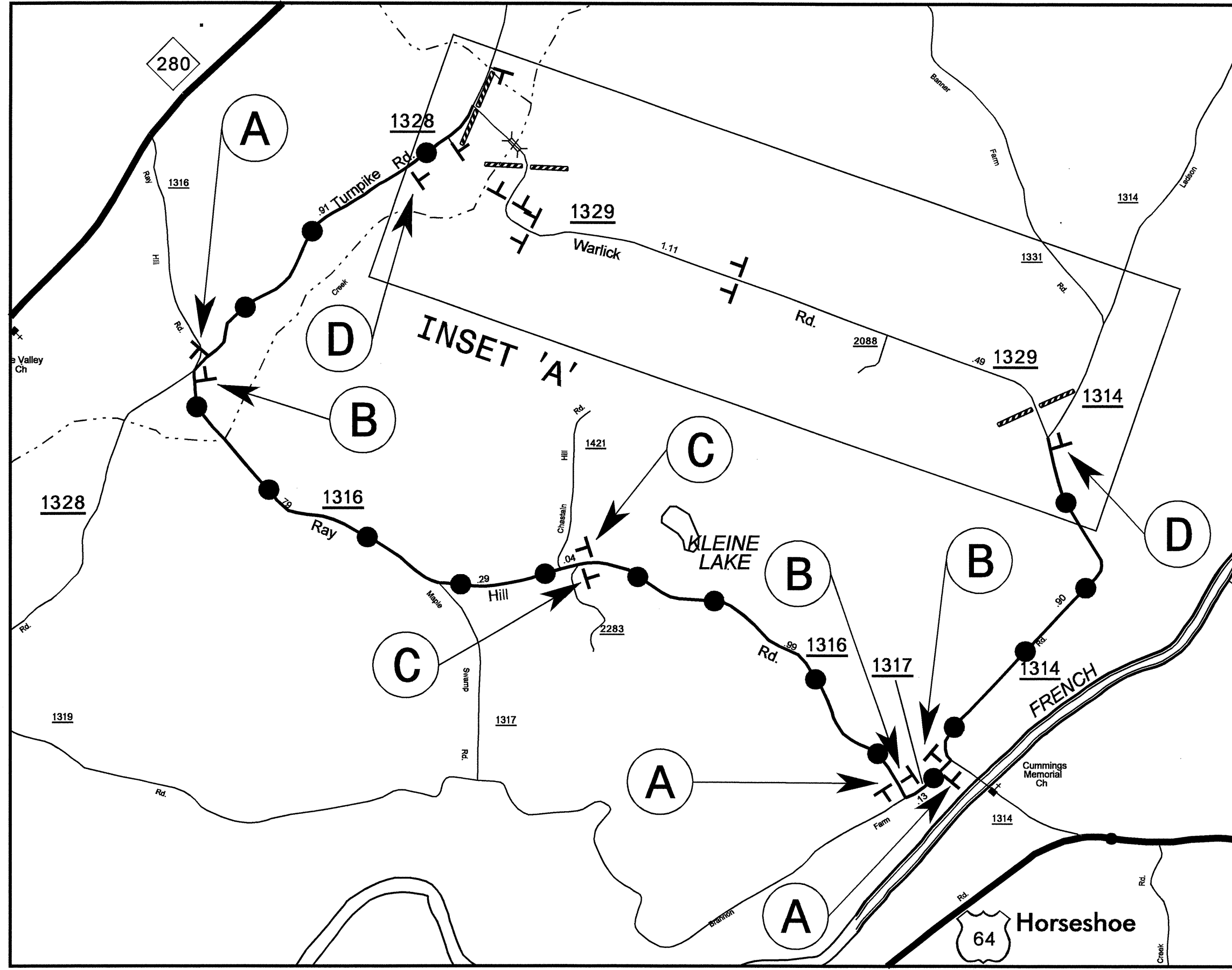
- I) PLACE TWO APPLICATIONS OF PAINT PAVEMENT MARKINGS ON THE FINAL WEARING SURFACE. PLACE THE SECOND APPLICATION OF PAINT UPON SUFFICIENT DRYING TIME OF THE FIRST.
- J) TIE PROPOSED PAVEMENT MARKING LINES TO EXISTING PAVEMENT MARKING LINES.

B-4148

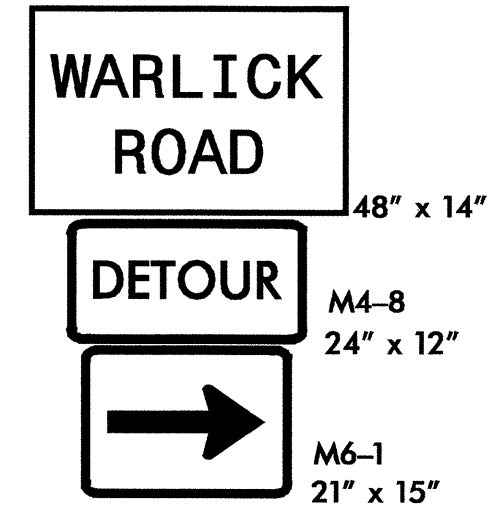
TIP PROJECT:

16-SEP-2008 07:47
\\dot-vsp0\projects\10\Proj\TIP\projects-b\4148\trafficcontrol\tcp\b-4148.tc.tcp_01.tiff.dgn
ahayes AT WZTC244738

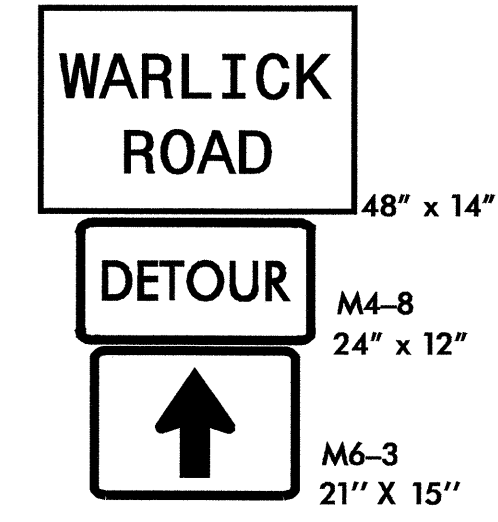
APPROVED: DATE: <i>J. W. Woolard</i>	PLAN PREPARED BY: N.C.D.O.T. WORK ZONE TRAFFIC CONTROL UNIT
SEAL 	J. S. BOURNE, P.E. TRAFFIC CONTROL ENGINEER
	G. L. GETTIER, P.E. TRAFFIC CONTROL PROJECT ENGINEER
	J. W. WOOLARD, P.E. TRAFFIC CONTROL PROJECT DESIGN ENGINEER
	D. A. HAYES, E.I. TRAFFIC CONTROL DESIGN ENGINEER / TECHNICIAN



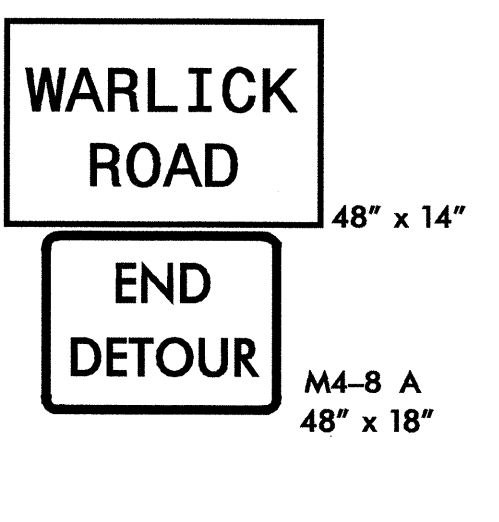
A



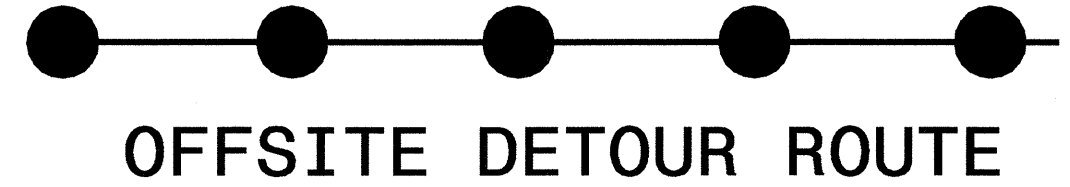
B



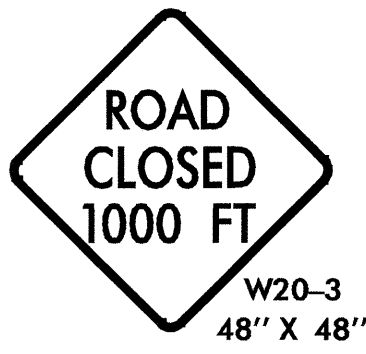
C



D



E



F



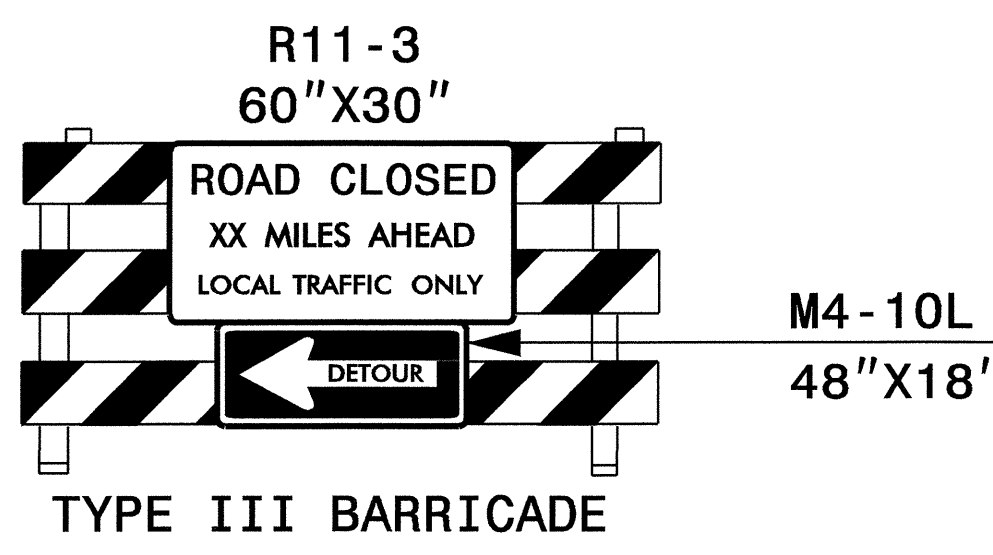
G



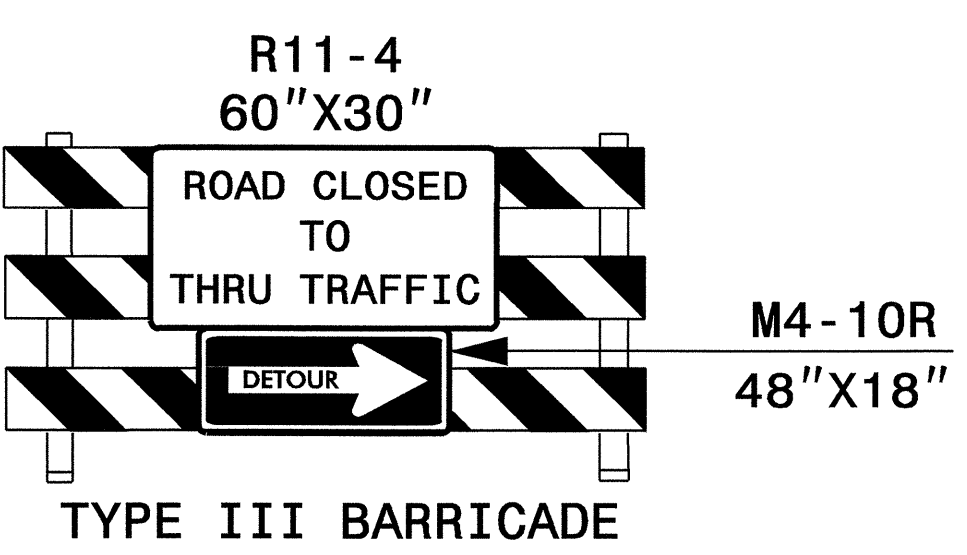
K



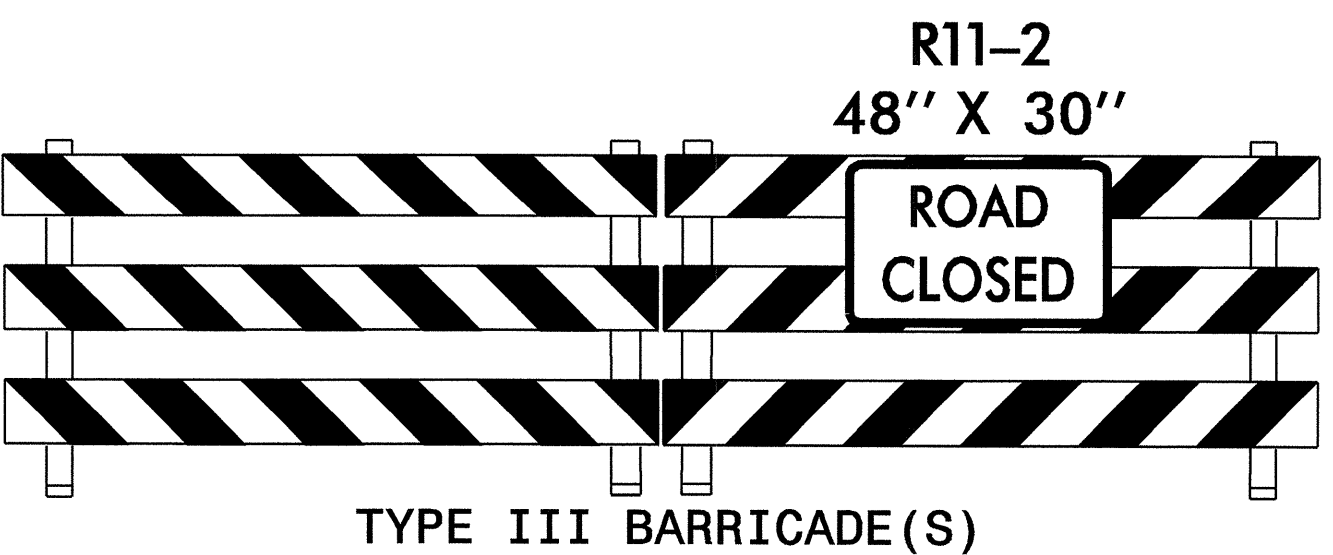
L



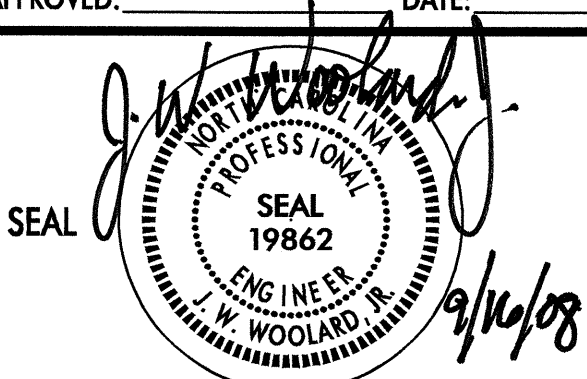
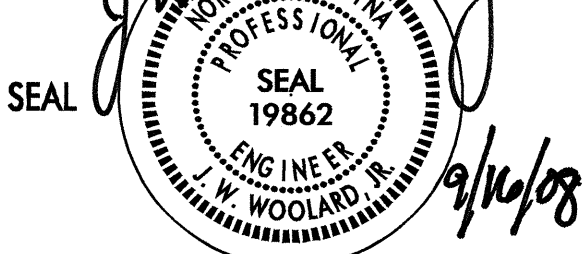
H



I



J

APPROVED: 	DATE: 9/16/08	OFFSITE DETOUR	
SEAL 			
SCALE: NONE	REVISIONS		
DATE: 09/08			
DWG. BY: DAH			
DESIGN BY: DAH			
REVIEWED BY: JWW			

16-SEP-2008 07:48
 \\dot-vsp\projects\16-SEP-2008\16-SEP-2008\Traffic\TrafficControl\Top\B-4148_TC_TCP_02_GenNotes.dgn
 AT: WZTC24738