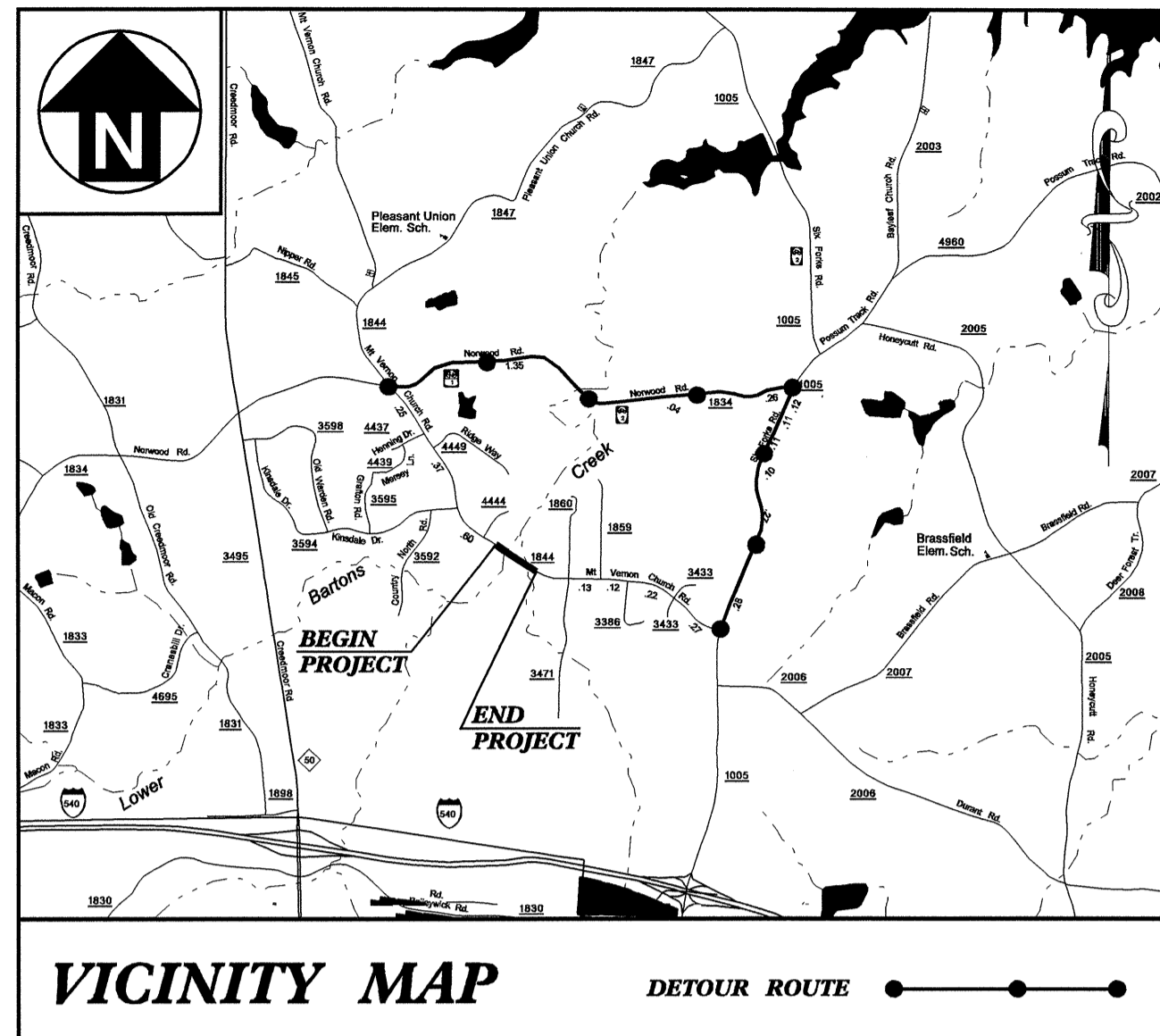


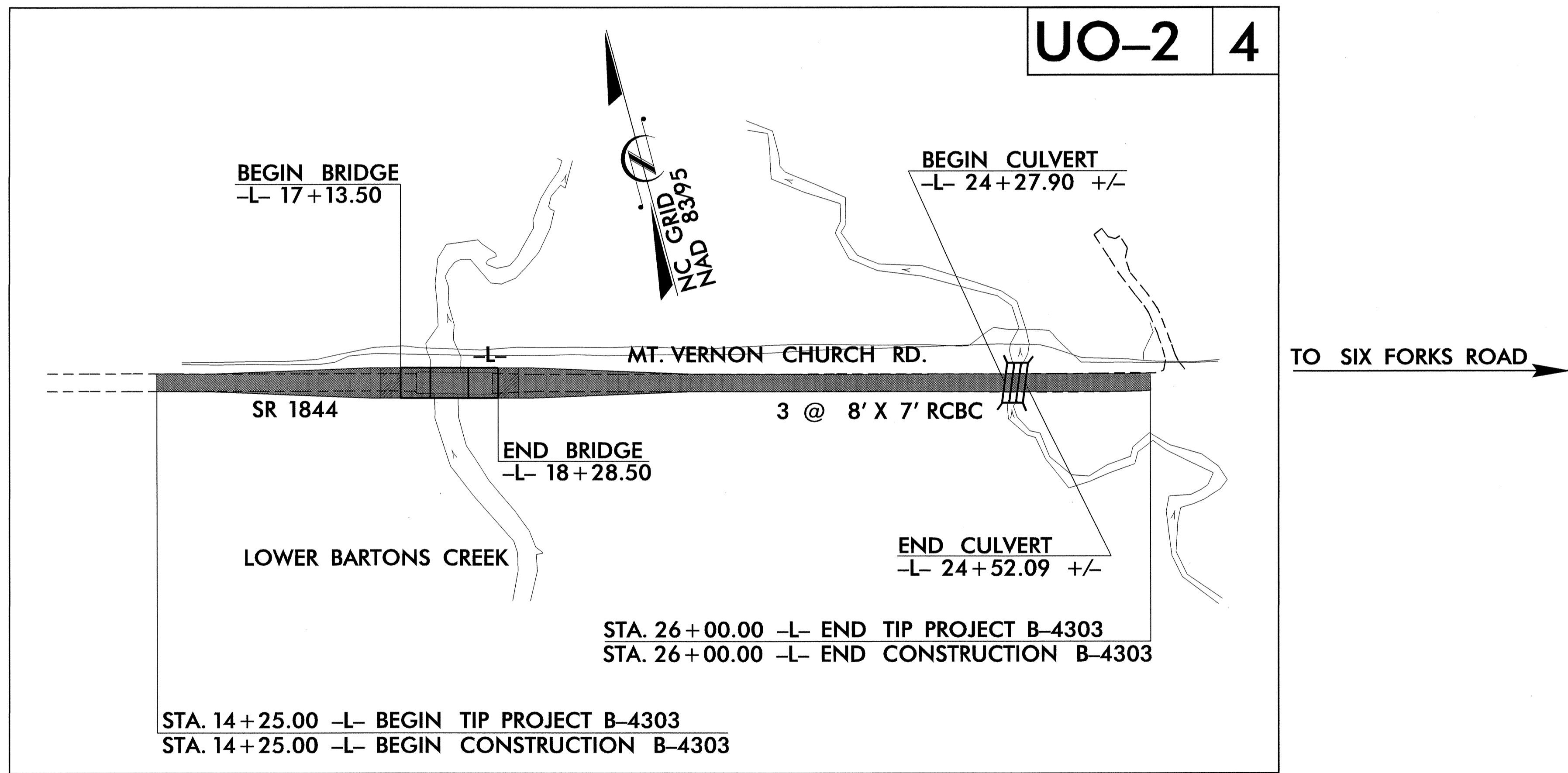
STATE OF NORTH CAROLINA
DIVISION OF HIGHWAYS

**UTILITIES BY OTHERS PLANS
WAKE COUNTY**

LOCATION: BRIDGE NO. 102 OVER LOWER BARTONS CREEK ON SR 1844
TYPE OF WORK: UTILITIES

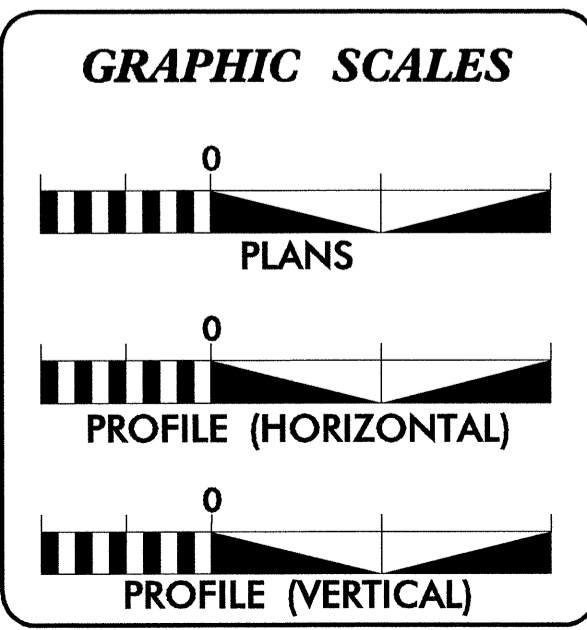


TIP PROJECT: B-4303



MULKEY
ENGINEERS & CONSULTANTS
PO BOX 33127
RALEIGH, N.C. 27636
(919) 851-1912
(919) 851-1918 (FAX)
WWW.MULKEYINC.COM

THIS PROJECT IS NOT WITHIN ANY MUNICIPAL BOUNDARIES.
CLEARING ON THIS PROJECT SHOULD BE PERFORMED TO THE LIMITS ESTABLISHED BY METHOD III.



INDEX OF SHEETS

SHEET NO.	DESCRIPTION
UO-1	TITLE SHEET
UO-2	UTILITIES BY OTHERS PLAN SHEETS

- UTILITY OWNERS ON PROJECT**
- (1) PROGRESS ENERGY - POWER
 - (2) CITY OF RALEIGH - FORCE MAIN SEWER
 - (3) PSNC ENERGY - GAS
 - (4) AT&T - TELEPHONE
 - (5) TIME WARNER - TV CABLE
 - (6) MCI - TFO

PREPARED IN THE OFFICE OF:
**DIVISION OF HIGHWAYS
DESIGN SERVICES
UTILITY SECTION**

1591 MAIL SERVICES CENTER
RALEIGH, NC 27699-1591
PHONE (919) 258-4128
FAX (919) 238-4119

Roger Worthington, P.E. UTILITIES SECTION ENGINEER
Steve McKee, P.E. UTILITIES SQUAD LEADER PROJECT ENGINEER
Jamshid Hafshejani UTILITIES PROJECT DESIGNER

I7-SEP-2008 09:40 R:\Utilities\Proj\B4303_UO1_rdy_1.tsh.dgn \$\$\$USERNAME\$\$\$



UTILITIES BY OTHERS

NOTE:

1. THE POWER LINE OWNED BY PROGRESS ENERGY.
2. THE TEL. LINE OWNED BY AT&T.
3. THE TFO. LINE OWNED BY MCI.
4. THE TVC. LINE OWNED BY TIME WARNER.
5. THE GAS LINE OWNED BY PSNC ENERGY.

NOTES:

1. THE SEWER LINE ON THIS PROJECT IS OWNED BY THE CITY OF RALEIGH.
2. THE CONTRACTOR MUST COORDINATE WITH CITY OF RALEIGH ONE WEEK BEFORE ANY EXCAVATION ON THE TOP OF EXISTING SEWER LINE.
3. THE GAS LINE ON THIS PROJECT IS OWNED BY THE PSNC ENERGY.
4. THE CONTRACTOR MUST COORDINATE WITH PSNC ENERGY ONE WEEK BEFORE ANY EXCAVATION ON THE TOP OF EXISTING GAS LINE.

NOTE:
ALL PROPOSED UTILITY WORK SHOWN ON THIS SHEET WILL BE DONE BY OTHERS

Note:
Subaqueous lines (trenchless) must be replaced at a depth of seven feet (7') minimum below the lowest depth of creek and three feet (3') minimum below the wet land and in the other areas.

TOP ELEVATION = 283.41
DEPTH = 2.36
TOP ELEVATION = 285.31
DEPTH = 1.50

JACK R. CARROLL
NANCY T. CARROLL
DB 9824 PG 887
BM 2001 PG 358

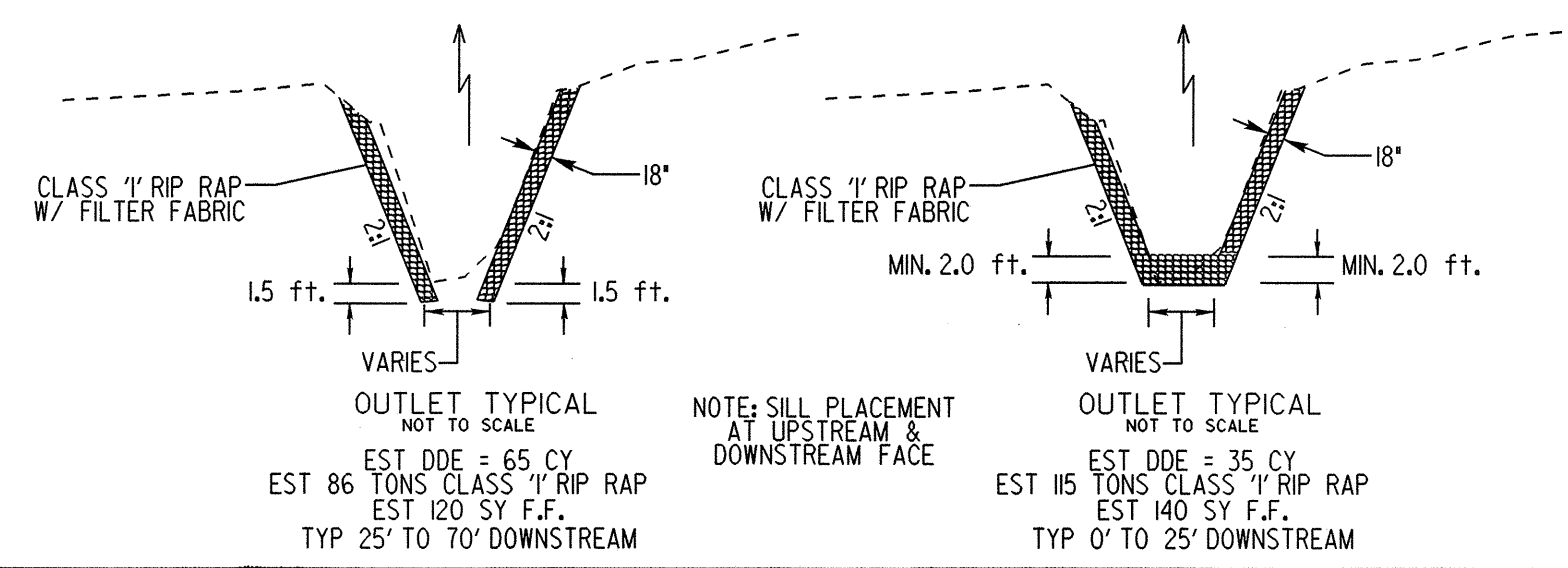
TOP ELEVATION = 279.06
DEPTH = 3.80'
TOP ELEVATION = 278.57
DEPTH = 3.59'

TOP ELEVATION = 282.48
DEPTH = 4.05'
TOP ELEVATION = 279.03
DEPTH = 4.35'

TOP ELEVATION = 282.56
DEPTH = 3.55'
TOP ELEVATION = 284.51
DEPTH = 2.83'

PROP. TEMPORARY O/H POWER & CATV LINES TO BE USED DURING CONSTRUCTION.

Note:
The Utility company's Contractor's attention is directed to Section 1550, 102 and 107 of the Standard Specifications concerning the trenchless installation. No damage is allowed to the wetlands or stream by the trenchless installation. The Contractor's Engineer shall design the installation method and provide on-site oversight.



5/14/09
27-AUG-2008 09:48
R:\Utilities\Tech\U\Pr\o\B4303\UO2_psh04.dgn