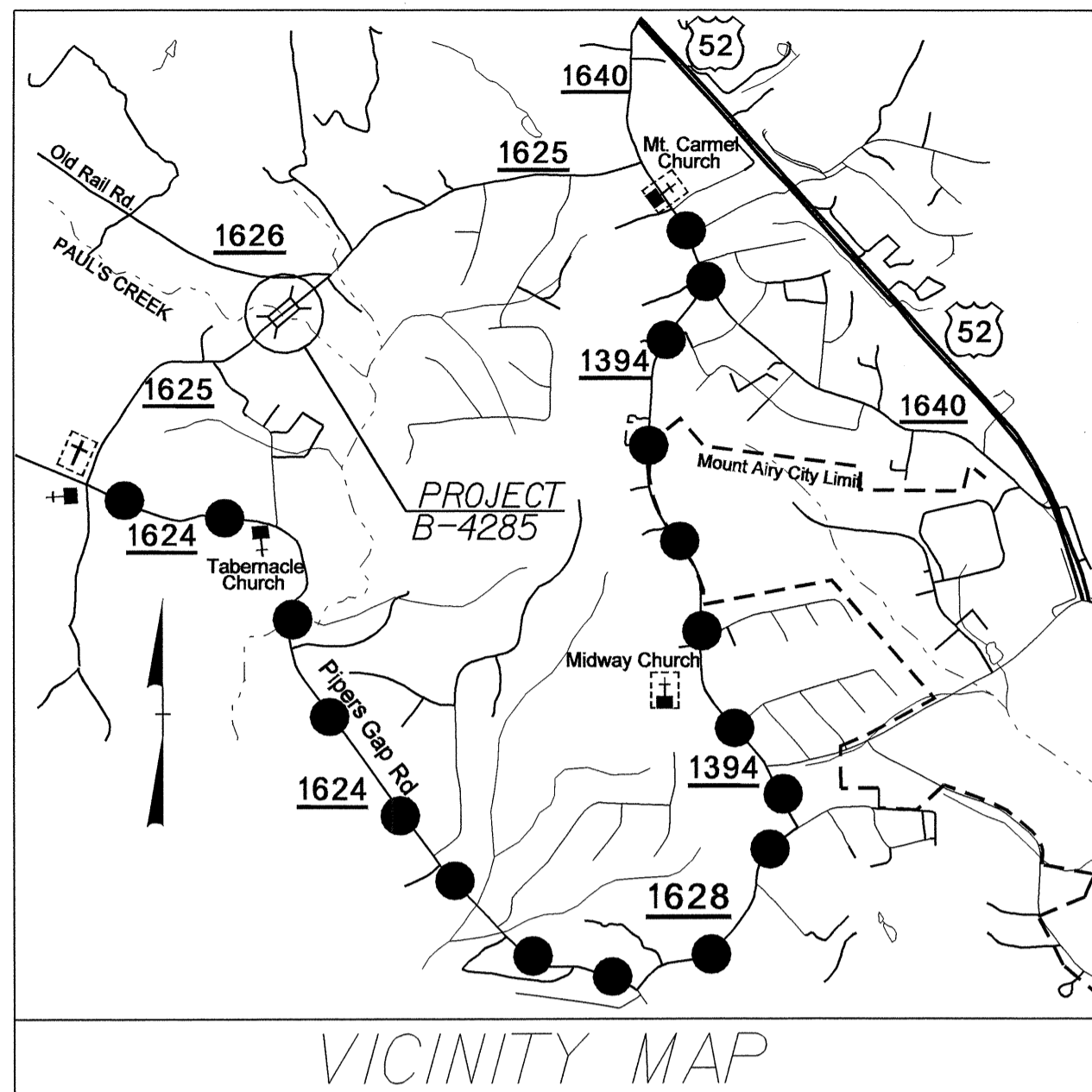


TIP PROJECT: B-4285

T.I.P. NO.	SHEET NO.
B-4285	UO-1



VICINITY MAP

THIS PROJECT IS NOT WITHIN ANY MUNICIPAL BOUNDARIES.

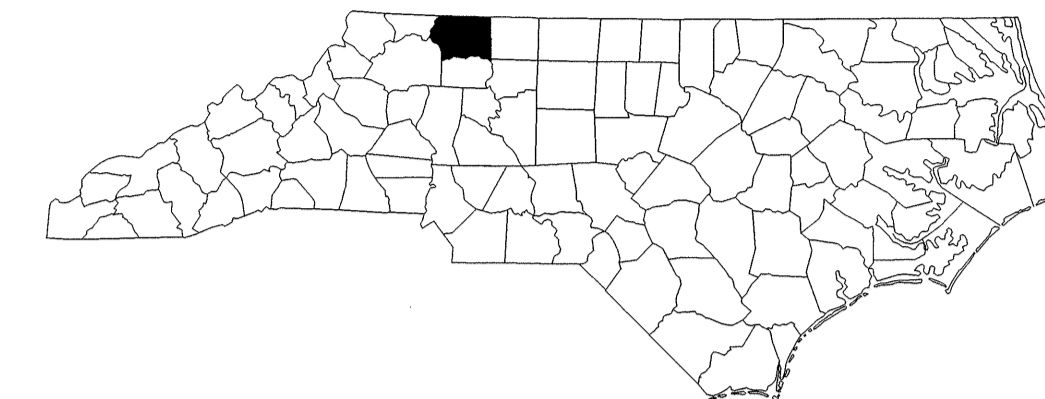
OFFSITE DETOUR ●●●●●●●●●●

STATE OF NORTH CAROLINA DIVISION OF HIGHWAYS

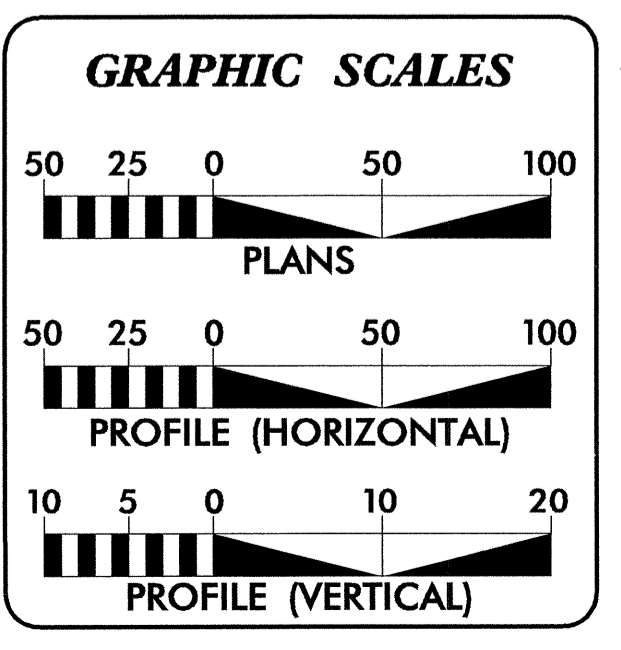
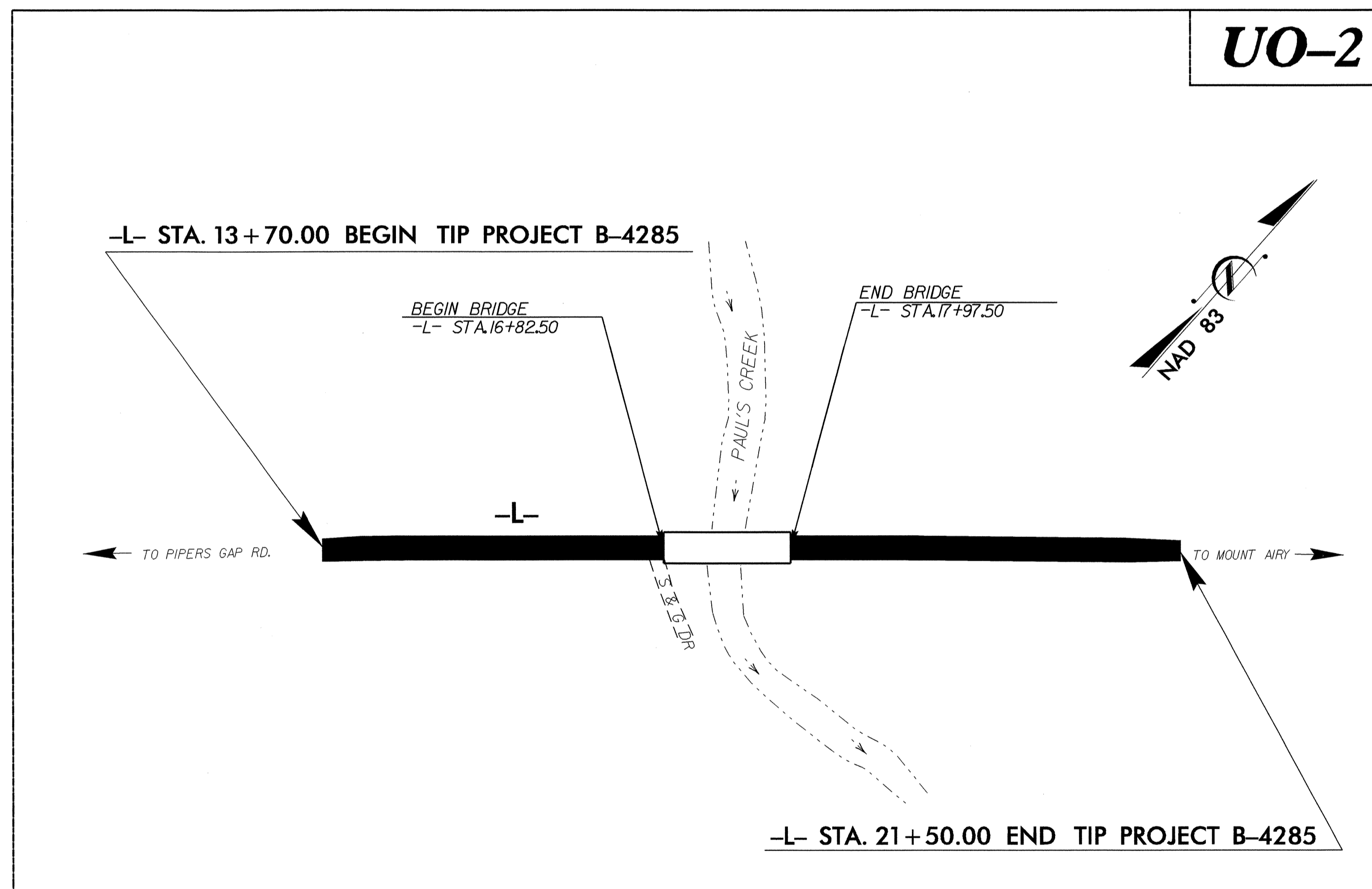
UTILITY BY OTHERS PLANS SURRY COUNTY

LOCATION: BRIDGE NO. 221 OVER PAUL'S CREEK ON
SR 1625

TYPE OF WORK: UTILITY RELOCATION



UO-2

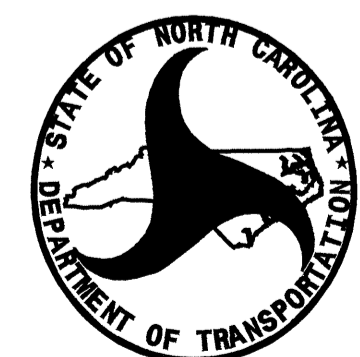


INDEX OF SHEETS

SHEET NO.	DESCRIPTION
UO-1	TITLE SHEET
UO-2	UTILITY BY OTHERS PLAN SHEET

UTILITY OWNERS ON PROJECT

- (1) SURRY YADKIN POWER (Power)
- (2) EMBARQ (Telephone)

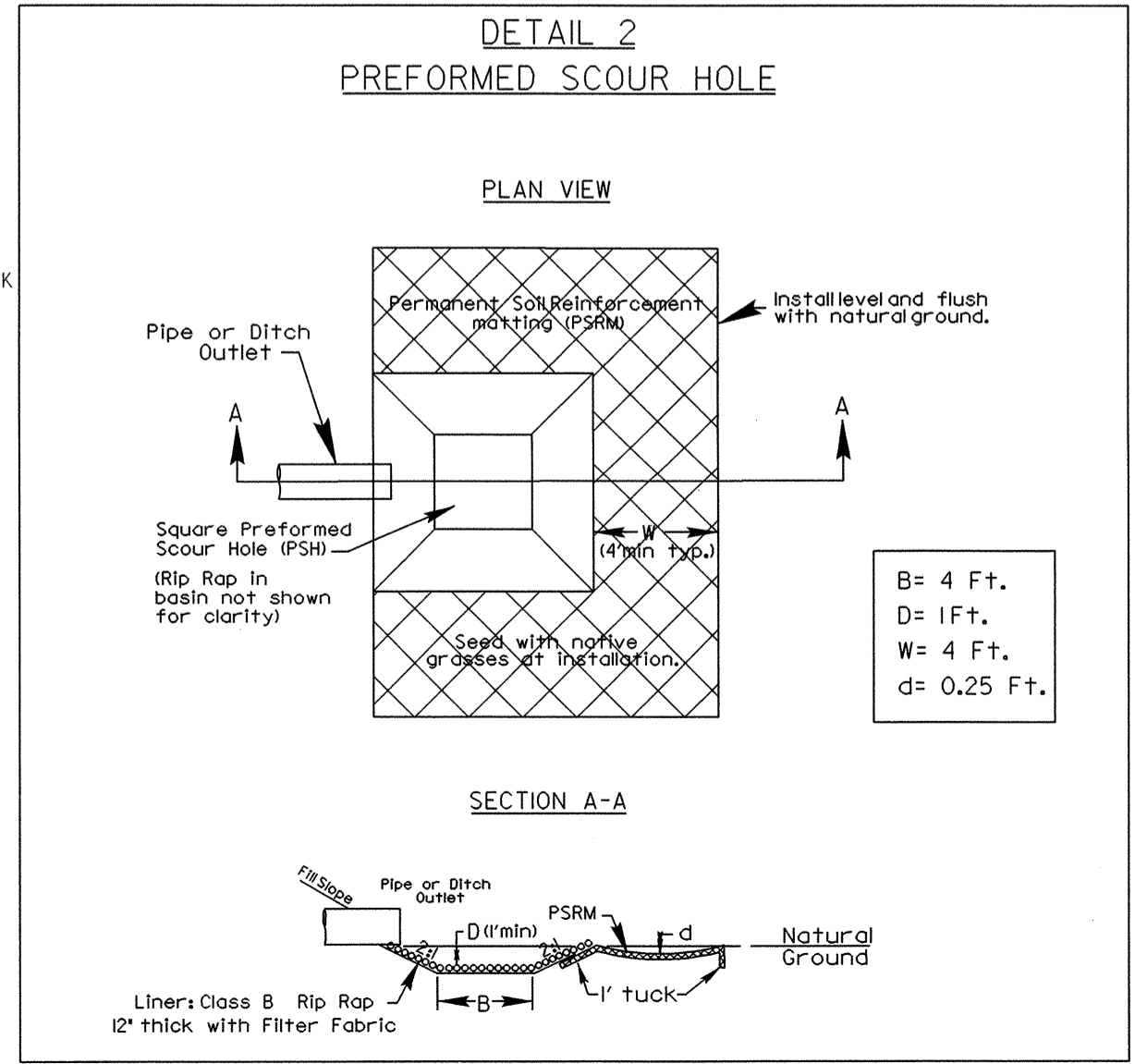
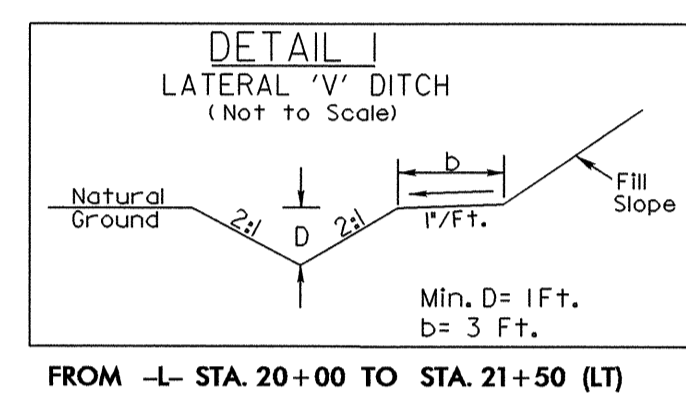
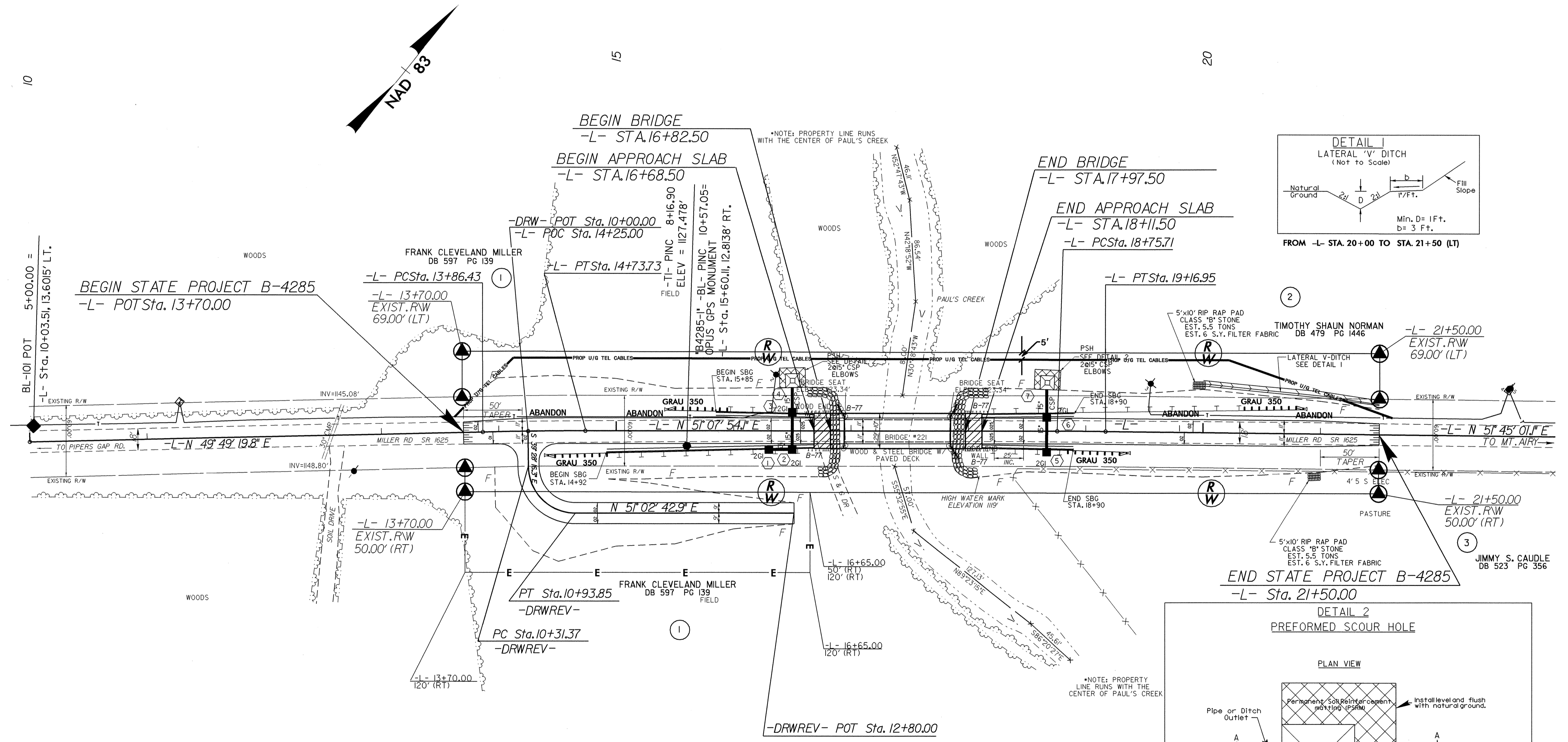
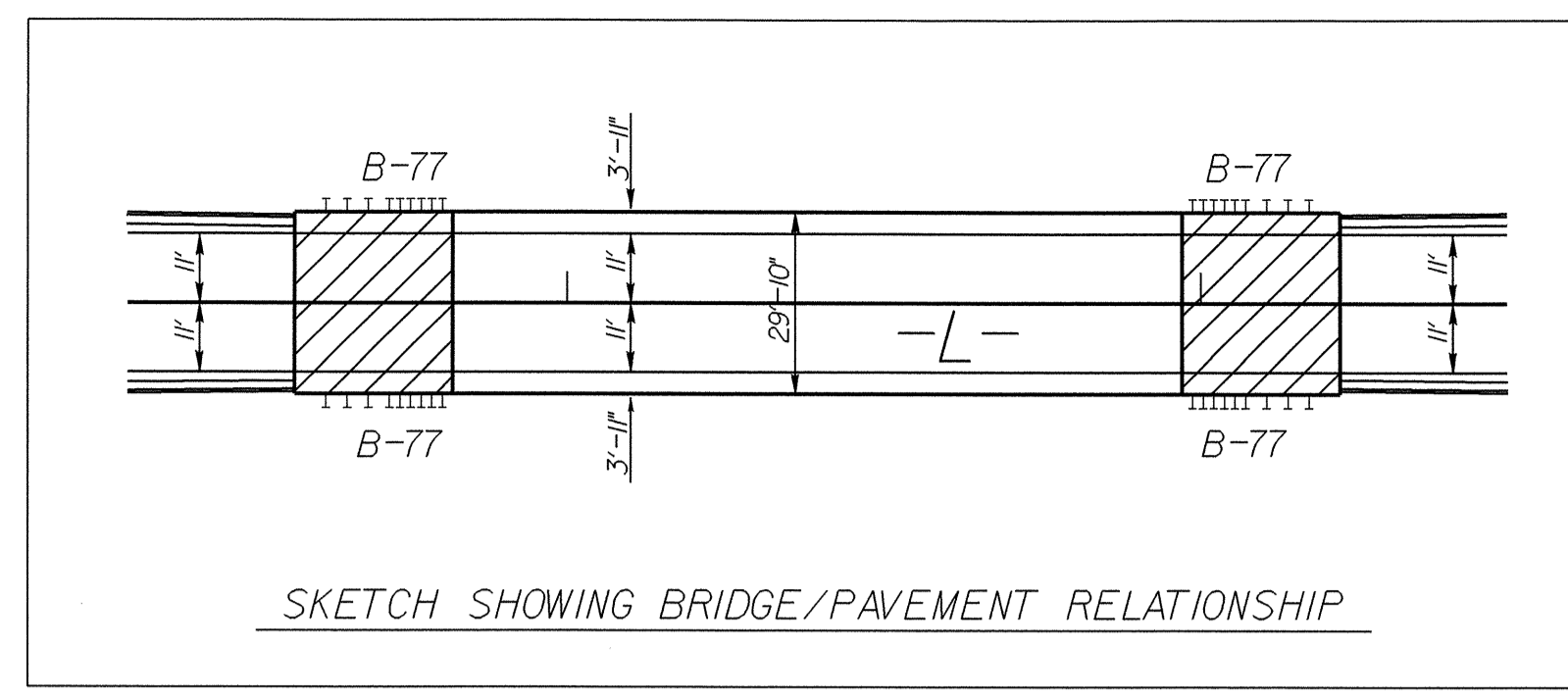


PREPARED IN THE OFFICE OF:
DIVISION OF HIGHWAYS
DESIGN SERVICES
UTILITY SECTION
 1591 MAIL SERVICES CENTER
 RALEIGH NC 27699-1591
 PHONE (919) 250-4128
 FAX (919) 250-4119

Roger Worthington, P.E. UTILITIES SECTION ENGINEER
Corey Bousquet, P.E. UTILITIES SQUAD LEADER PROJECT ENGINEER
Nabil Hamdan UTILITIES PROJECT DESIGNER

UTILITIES BY OTHERS

NOTE:
 ALL PROPOSED UTILITY WORK
 SHOWN ON THIS SHEET WILL
 BE DONE BY OTHERS



-DRWREV-	-L-	-L-
PI Sta 10+71.02	PI Sta 14+30.08	PI Sta 18+96.33
$\Delta = 89^\circ 29' 00.8''$ (LT)	$\Delta = 1^\circ 18' 34.3''$ (RT)	$\Delta = 0^\circ 37' 07.0''$ (RT)
$D = 143^\circ 14' 22.0''$	$D = 1^\circ 30' 00.0''$	$D = 1^\circ 30' 00.0''$
$L = 62.47'$	$L = 87.30'$	$L = 41.24'$
$T = 39.64'$	$T = 43.65'$	$T = 20.62'$
$R = 40.00'$	$R = 3,819.72'$	$R = 3,819.72'$
SE = NC	SE = NC	SE = NC

-L- STA. 16+50 (LT.)
 -L- STA. 18+67 (LT.)

5/14/95
 10
 18-DEC-2007 09:23
 h:\b\tees\cdu\proj\4285_rdy_psh4_uo2.dgn
 \$\$\$\$
 \$\$\$\$
 \$\$\$\$