

**TIP PROJECT: B-4285**

STATE OF NORTH CAROLINA  
DIVISION OF HIGHWAYS

---

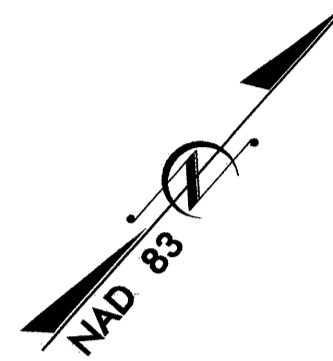
PLAN FOR PROPOSED  
HIGHWAY EROSION CONTROL

---

**SURRY COUNTY**

**LOCATION: BRIDGE NO. 221 OVER PAUL'S CREEK ON  
SR 1625**

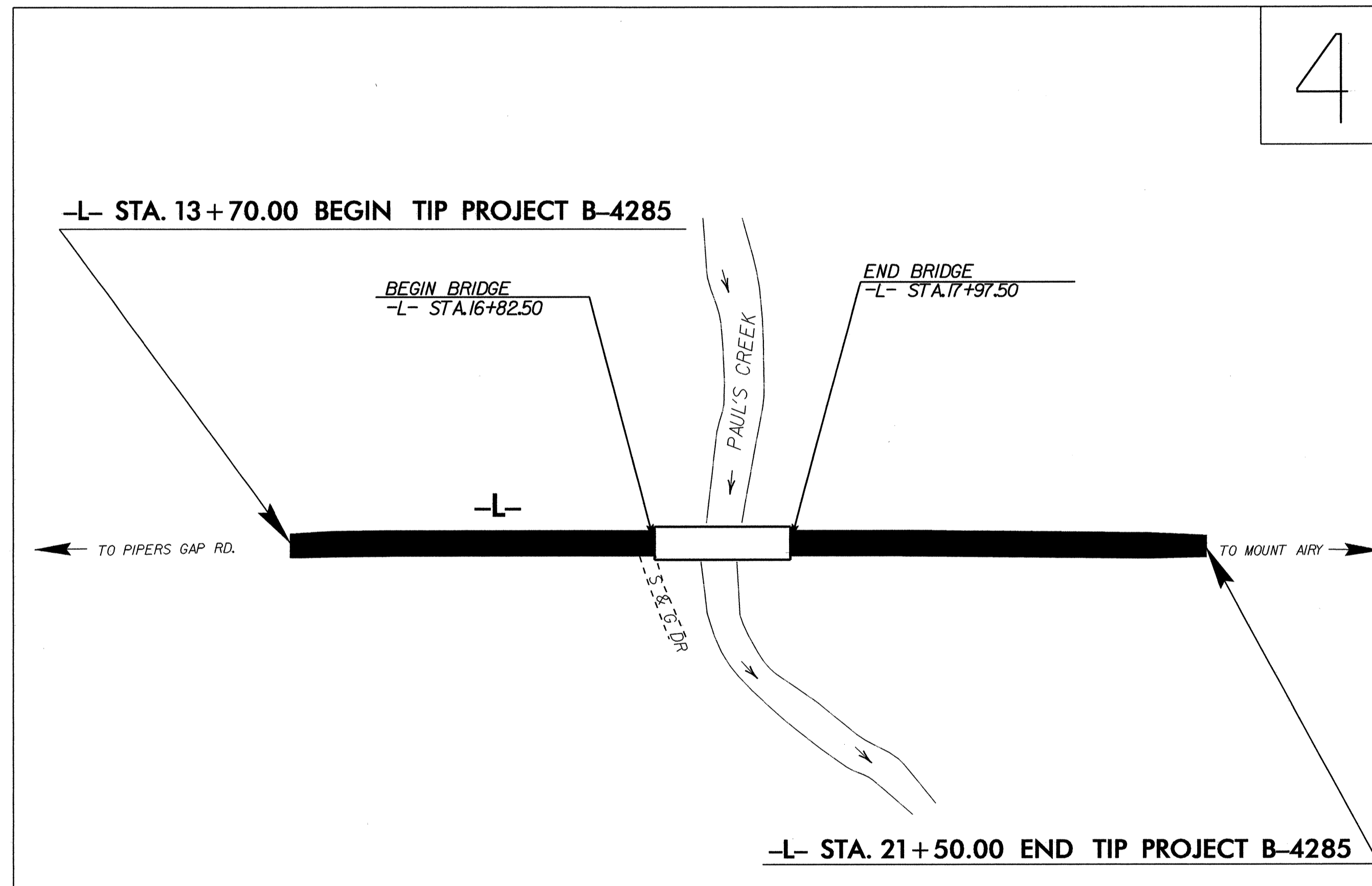
**TYPE OF WORK: GRADING, PAVING, DRAINAGE AND STRUCTURE**



STATE	STATE PROJECT REFERENCE NO.	SHEET NO.	TOTAL SHEETS
N.C.	B-4285	EC-1	
STATE PROJ. NO.	F.A. PROJ. NO.	DESCRIPTION	

**EROSION AND SEDIMENT CONTROL MEASURES**

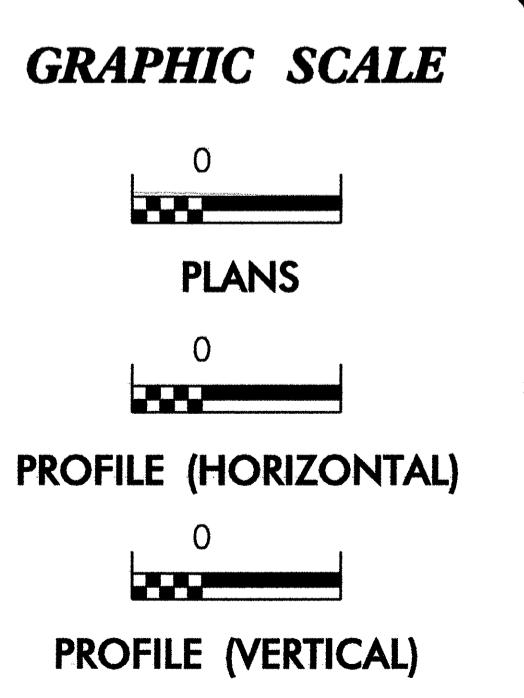
Std. #	Description	Symbol
	Streambank Reforestation	
1630.05	Temporary Silt Ditch	
1630.05	Temporary Diversion	
1605.01	Temporary Silt Fence	
1606.01	Special Sediment Control Fence	
1622.01	Temporary Berms and Slope Drains	
1630.01	Riser Basin	
1630.02	Silt Basin Type B	
1633.01	Temporary Rock Silt Check Type-A	
	Temporary Rock Silt Check Type-B	
1634.01	Temporary Rock Sediment Dam Type-A	
1634.02	Temporary Rock Sediment Dam Type-B	
1635.01	Rock Pipe Inlet Sediment Trap Type-A	
1635.02	Rock Pipe Inlet Sediment Trap Type-B	
1630.04	Stilling Basin	
	Rock Inlet Sediment Trap:	
1632.01	Type A	
1632.02	Type B	
1632.03	Type C	
	Skimmer Basin	
	Tiered Skimmer Basin	
	Infiltration Basin	



**THIS PROJECT CONTAINS  
EROSION CONTROL PLANS  
FOR CLEARING AND  
GRUBBING PHASE OF  
CONSTRUCTION.**

**ENVIRONMENTALLY  
SENSITIVE AREA(S) EXIST  
ON THIS PROJECT**  
*Refer To E. C. Special Provisions  
for Special Considerations.*

**THIS PROJECT HAS  
BEEN DESIGNED TO  
SENSITIVE WATERSHED  
STANDARDS.**



ROADSIDE ENVIRONMENTAL UNIT  
DIVISION OF HIGHWAYS  
STATE OF NORTH CAROLINA

Prepared In the Office of:  
**ROADSIDE ENVIRONMENTAL UNIT**  
1 South Wilmington St.  
Raleigh, NC 27611  
**2006 STANDARD SPECIFICATIONS**

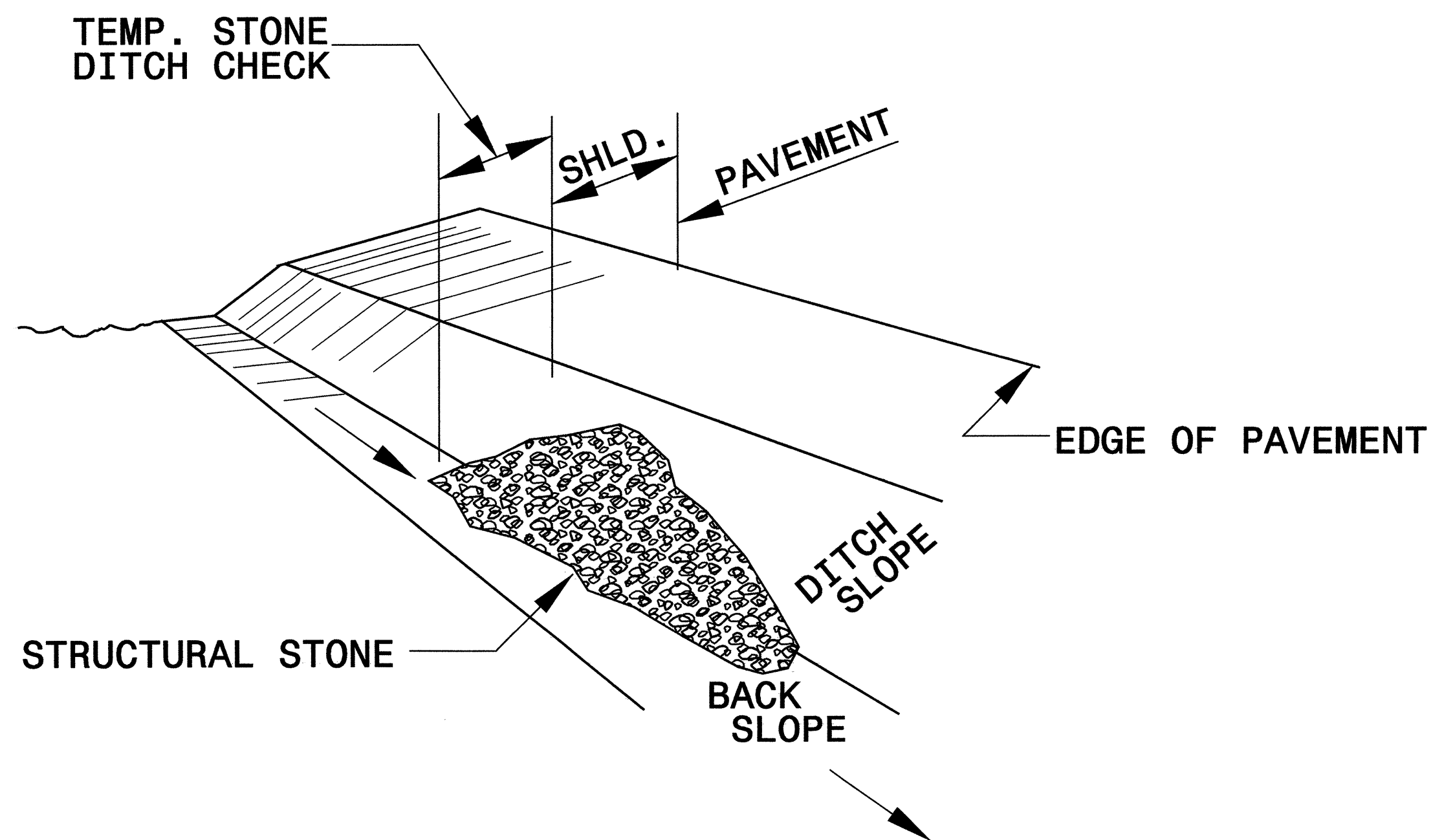
Roadway Standard Drawings

The following roadway english standards as appear in "Roadway Standard Drawings"- Roadway Design Unit - N. C. Department of Transportation - Raleigh, N. C., dated July 18, 2006 and the latest revision thereto are applicable to this project and by reference hereby are considered a part of these plans.

- 1605.01 Temporary Silt Fence
- 1607.01 Gravel Construction Entrance
- 1622.01 Temporary Berms and Slope Drains
- 1630.03 Temporary Silt Ditch
- 1630.05 Temporary Diversion
- 1630.06 Special Stilling Basin
- 1632.03 Rock Inlet Sediment Trap Type C
- 1633.01 Temporary Rock Silt Check Type A

PROJECT REFERENCE NO. B-4285	SHEET NO. EC-2
RW SHEET NO.	
ROADWAY DESIGN ENGINEER	HYDRAULICS ENGINEER

# TEMPORARY ROCK SILT CHECK TYPE 'B' DETAIL

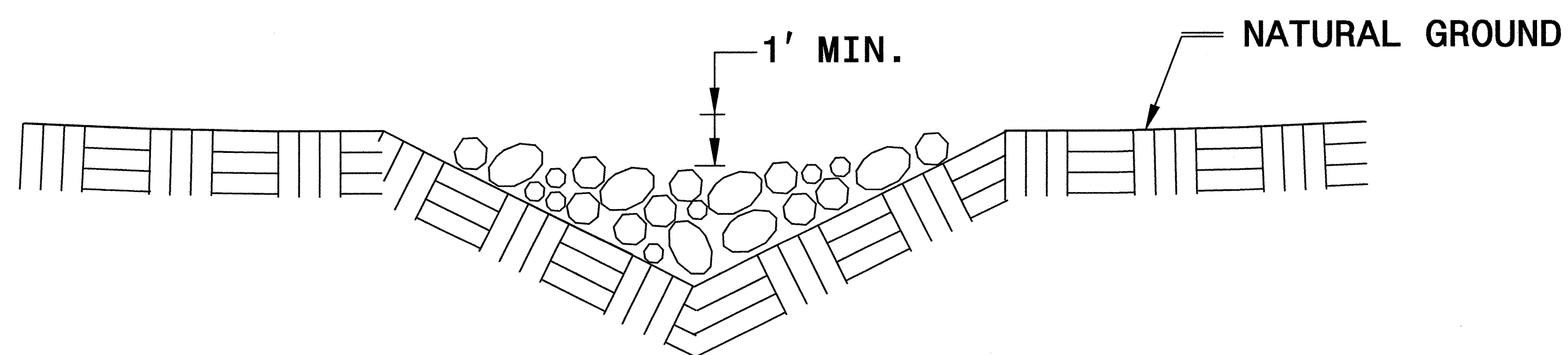


**ISOMETRIC VIEW**

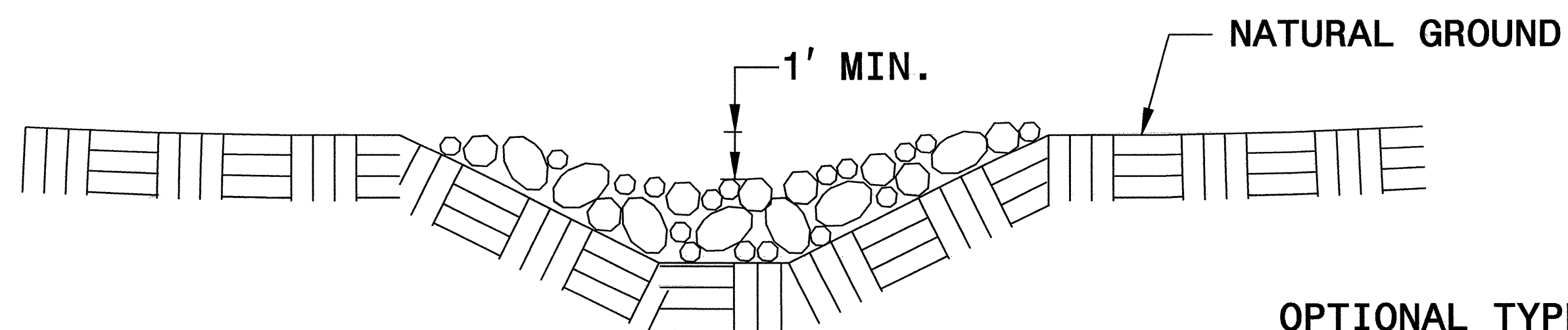
**NOTES:**

USE CLASS 'B' EROSION CONTROL STONE FOR STRUCTURAL STONE.

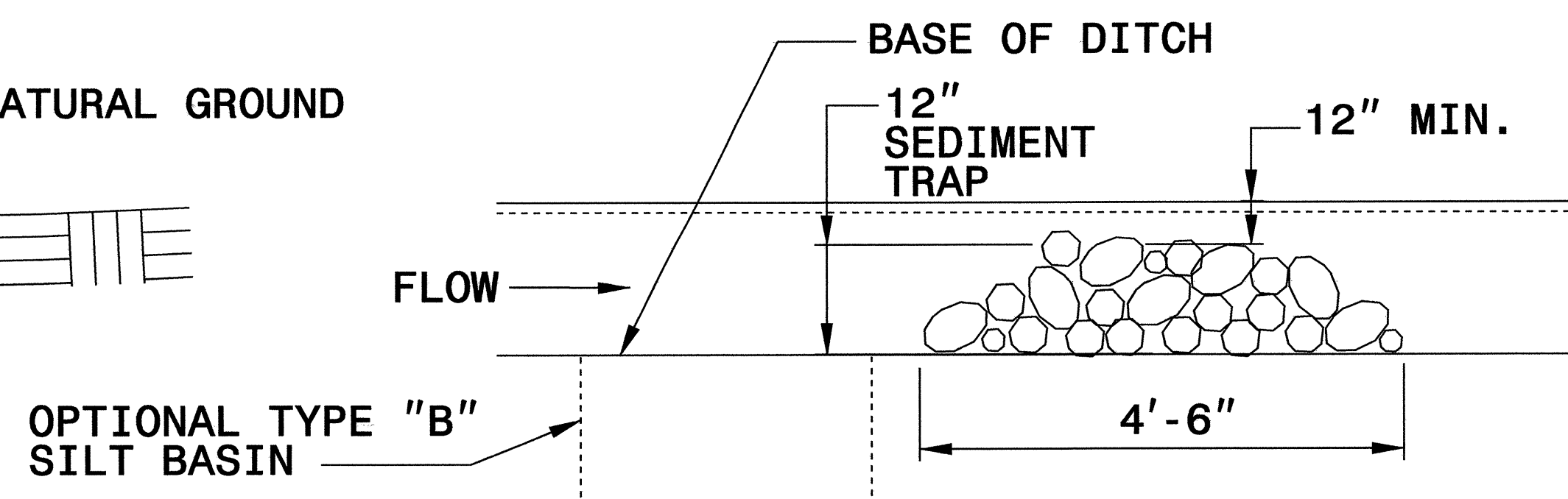
THE ENGINEER MAY DIRECT THE OPTION OF CLASS "A" STONE FOR SITES HAVING LESS THAN ONE (1) ACRE DRAINAGE AREA AND A DITCH GRADE LESS THAN 3%.



**CROSS SECTION  
VEE DITCH**



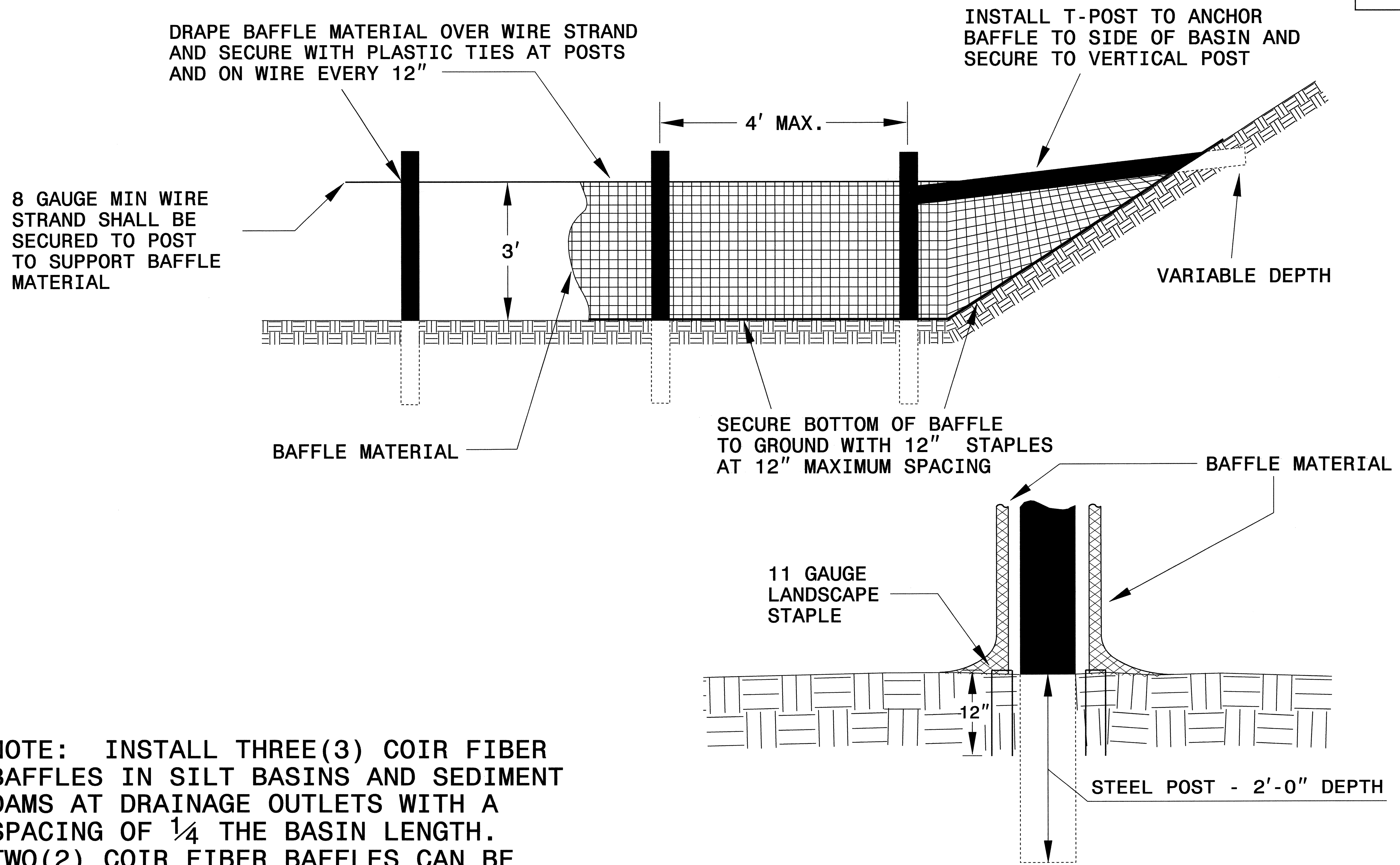
**CROSS SECTION  
TRAPEZOIDAL DITCH**



**ELEVATION VIEW**

PROJECT REFERENCE NO. B-4285	SHEET NO. EC-2A
RW SHEET NO.	
ROADWAY DESIGN ENGINEER	HYDRAULICS ENGINEER

# COIR FIBER BAFFLE DETAIL

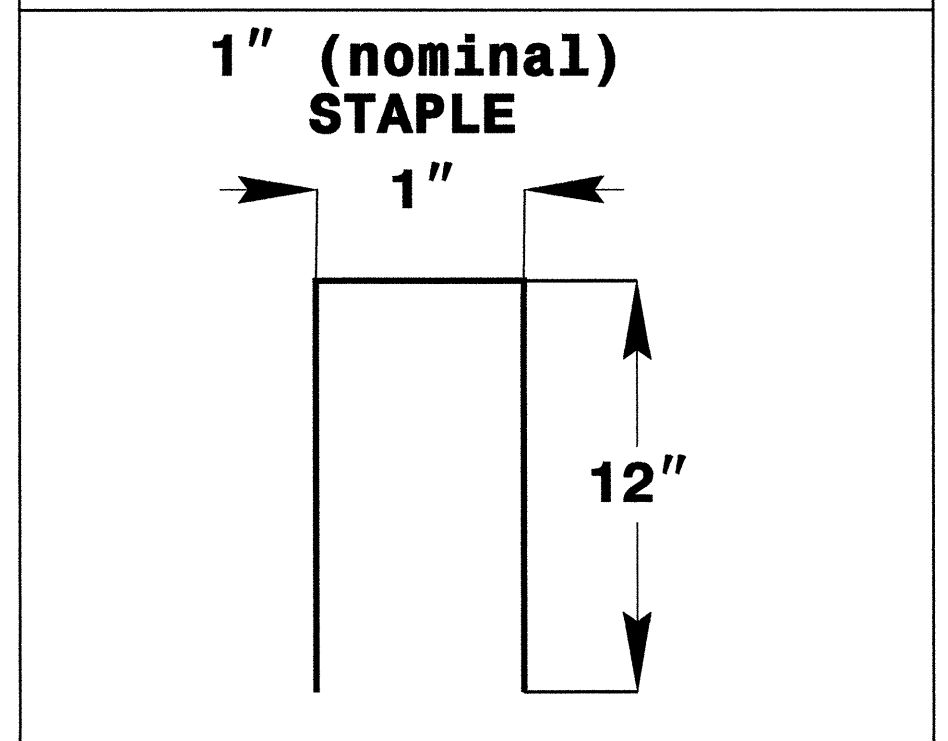
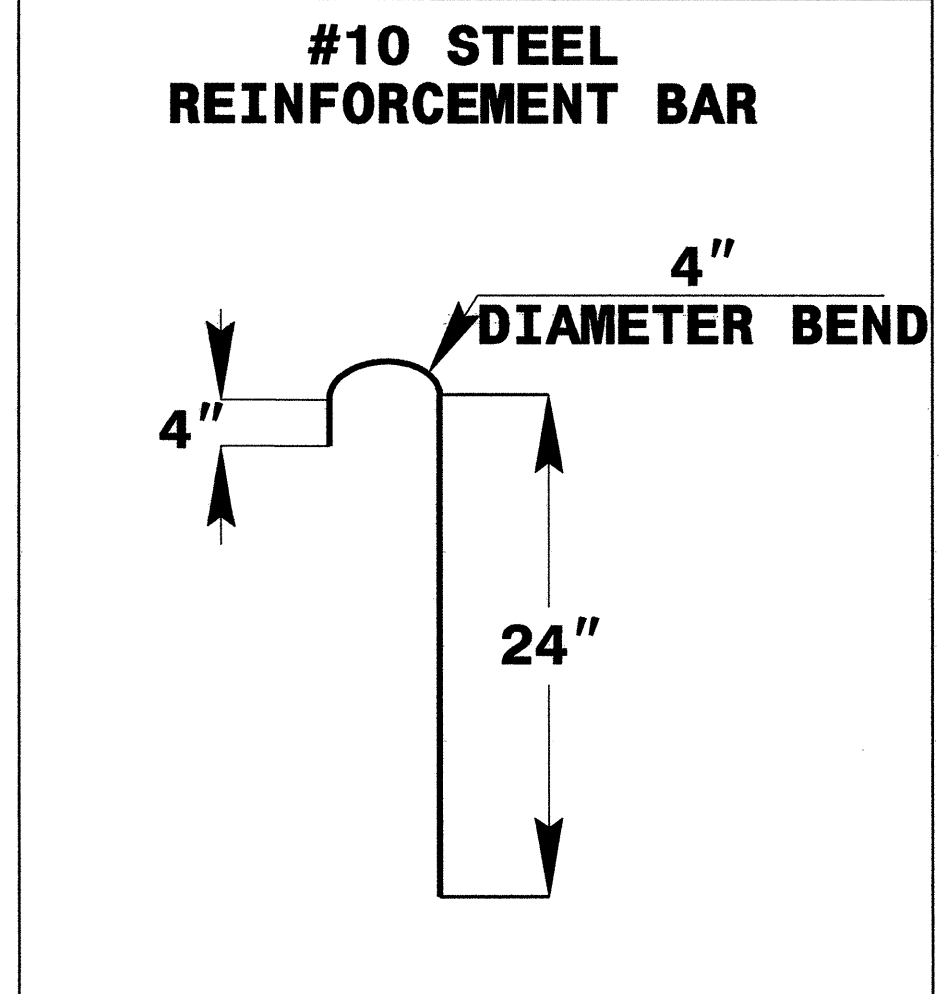
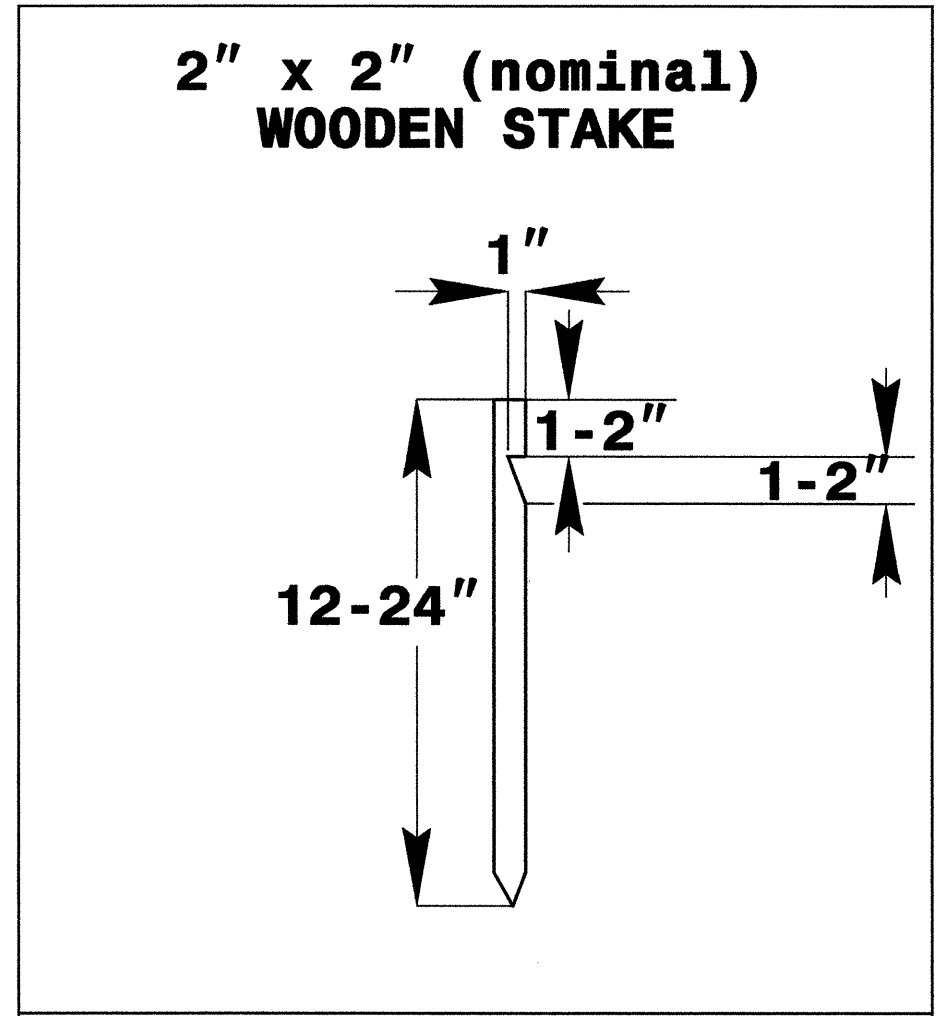
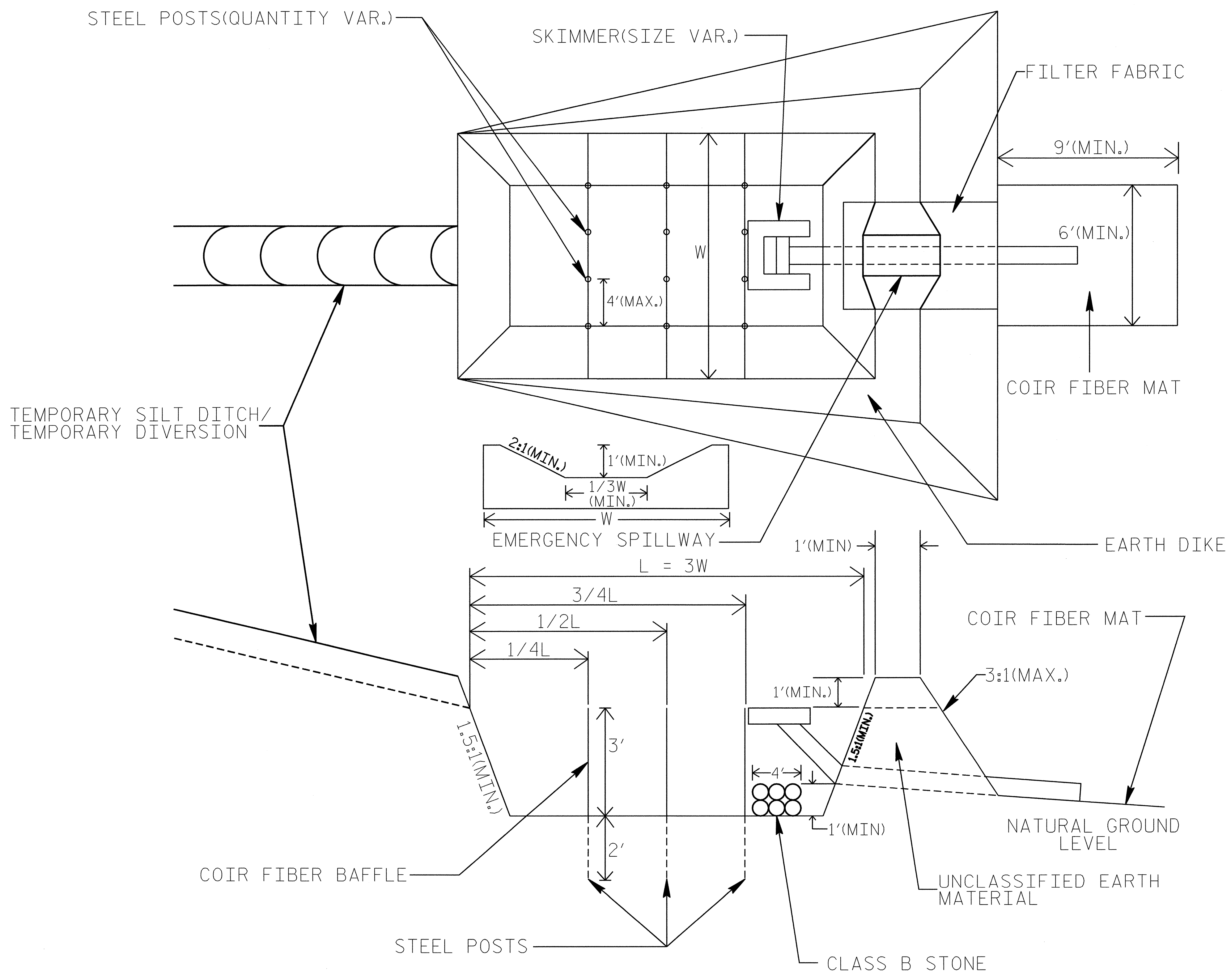


NOTE: INSTALL THREE(3) COIR FIBER BAFFLES IN SILT BASINS AND SEDIMENT DAMS AT DRAINAGE OUTLETS WITH A SPACING OF  $\frac{1}{4}$  THE BASIN LENGTH. TWO(2) COIR FIBER BAFFLES CAN BE INSTALLED IN SILT BASINS AND DAMS LESS THAN 20 FT. IN LENGTH WITH A SPACING OF  $\frac{1}{3}$  THE BASIN LENGTH.

BAFFLE MATERIAL SHALL BE SECURED TO THE BOTTOM AND SIDES OF BASIN USING 12" LANDSCAPE STAPLES

# SKIMMER BASIN WITH BAFFLES DETAIL

PROJECT REFERENCE NO. B-4285	SHEET NO. EC-2B
RW SHEET NO.	
ROADWAY DESIGN ENGINEER	HYDRAULICS ENGINEER



**COIR FIBER MAT ANCHOR OPTIONS**

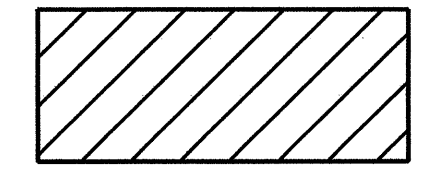
- NOTES:**
1. SEED AND PLACE MATTING FOR EROSION CONTROL ON SIDESLOPES.
  2. LIMIT EARTH DIKE HEIGHT TO 5 FT.



NOTE:  
UTILIZE SPECIAL STILLING BASIN OR SKIMMER  
BASIN AS STILLING BASIN WHERE APPLICABLE.

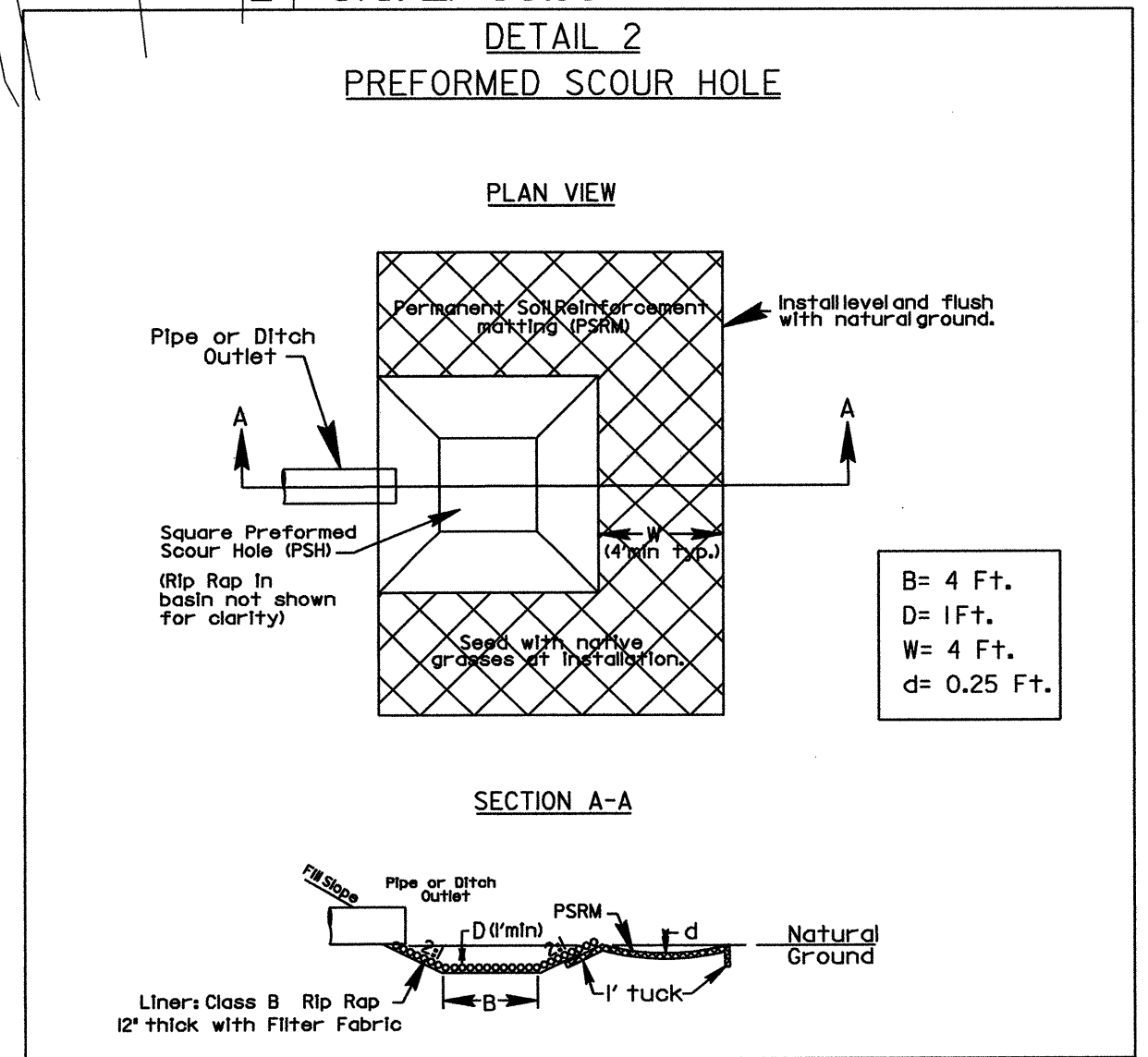
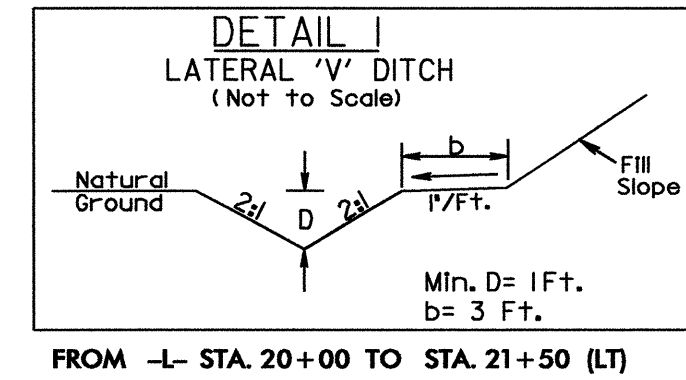
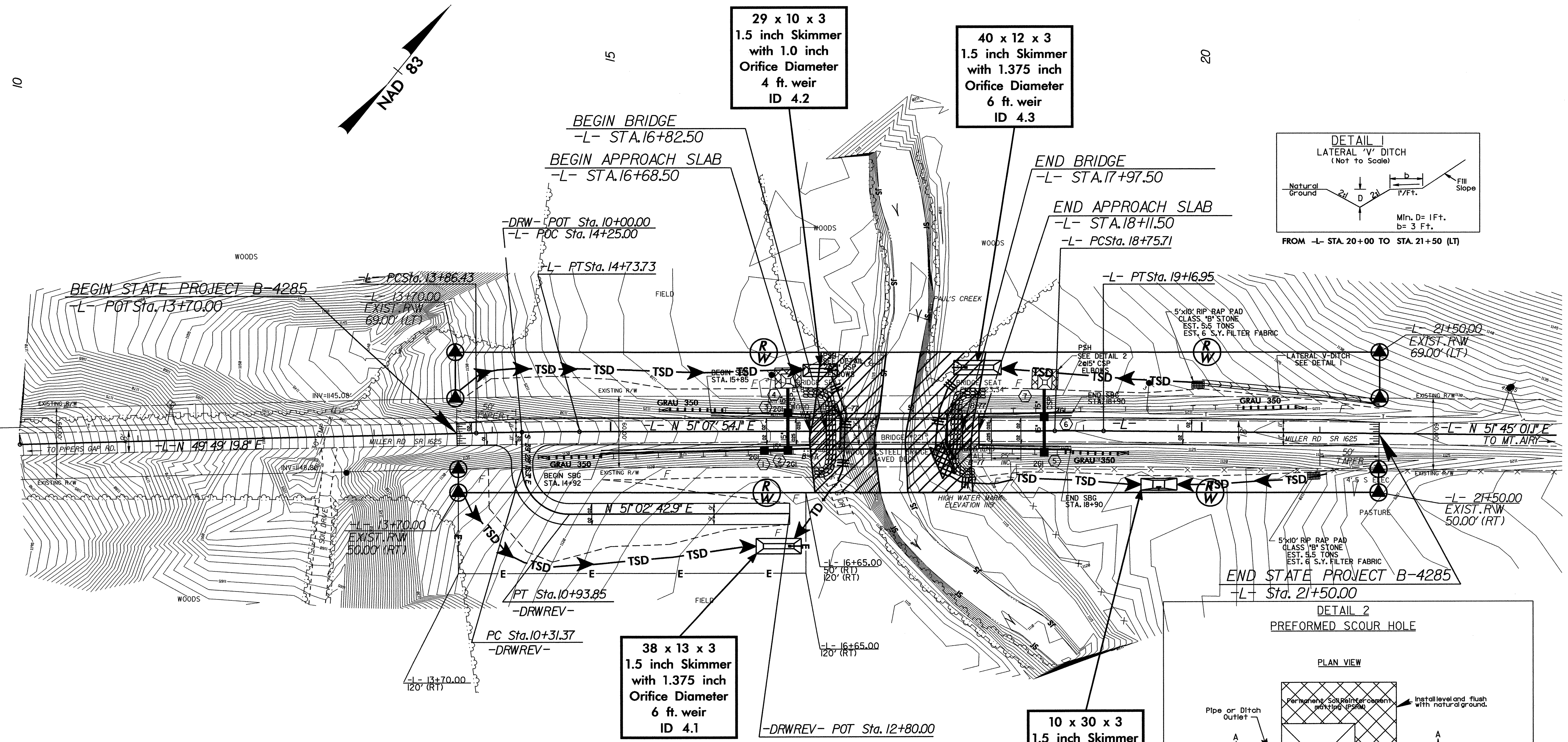
NOTE:  
PLACE TEMPORARY ROCK SEDIMENT DAMS TYPE - B  
AND TEMPORARY ROCK SILT CHECKS TYPE - A AT  
DRAINAGE OUTLETS.

CLEARING AND GRUBBING  
EROSION CONTROL FOR  
CONSTRUCTION SHEET 04



ENVIRONMENTALLY SENSITIVE AREA  
SEE PROJECT SPECIAL PROVISIONS

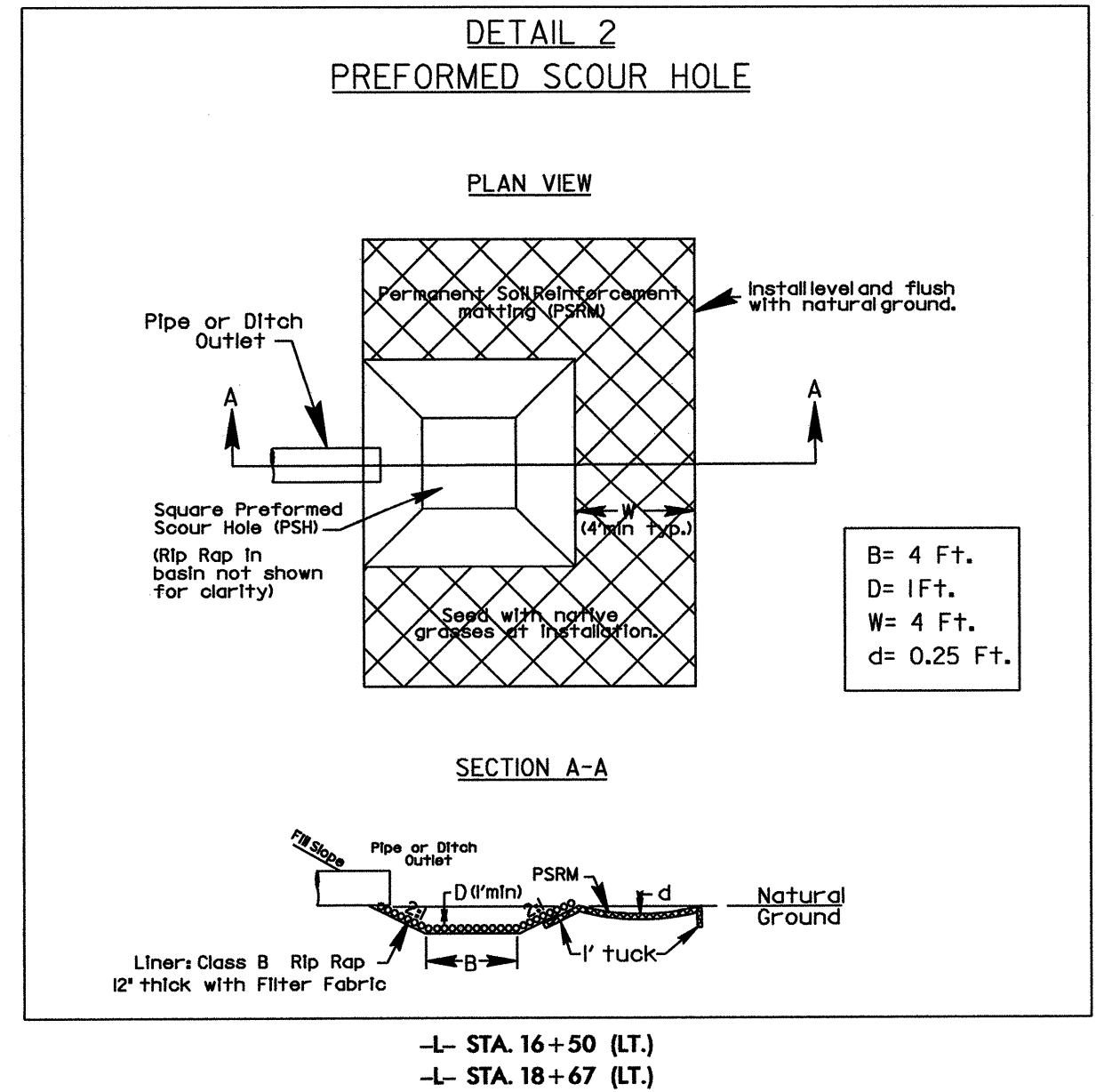
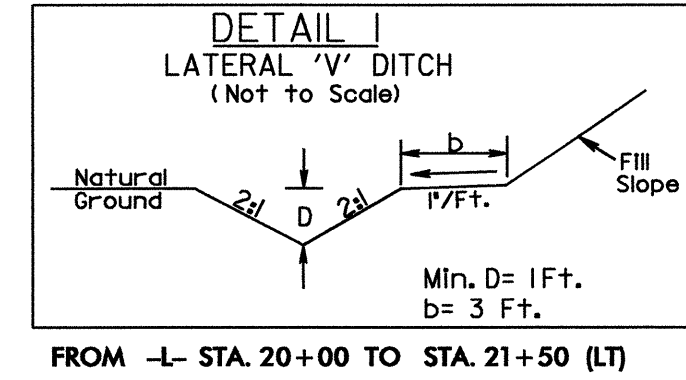
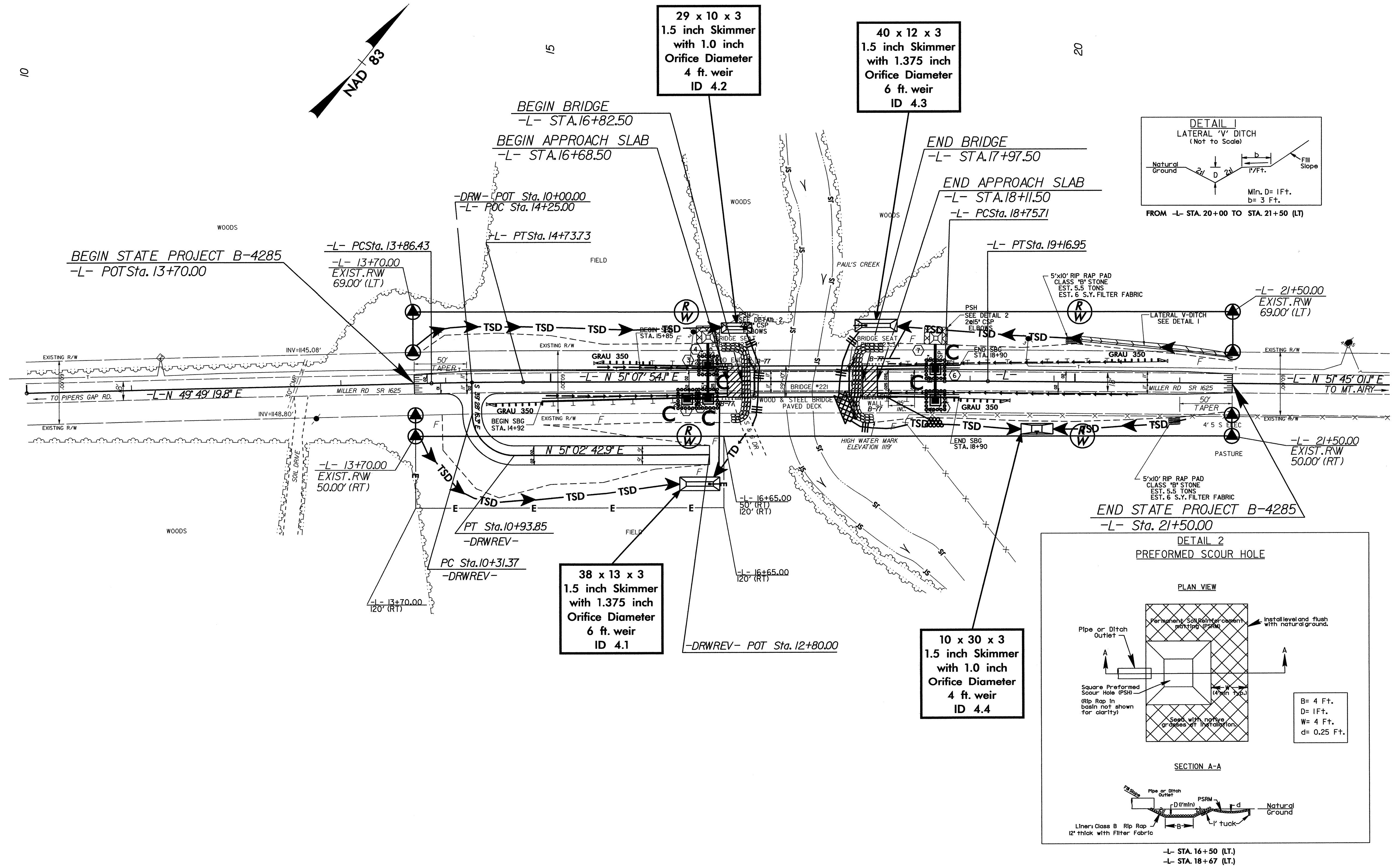
PROJECT REFERENCE NO. B-4285	SHEET NO. EC-04/CONST.04
RW SHEET NO.	
ROADWAY DESIGN ENGINEER	HYDRAULICS ENGINEER



-L- STA. 16+50 (LT.)  
-L- STA. 18+67 (LT.)

NOTE:  
UTILIZE SPECIAL STILLING BASIN OR SKIMMER  
BASIN AS STILLING BASIN WHERE APPLICABLE.

PROJECT REFERENCE NO. B-4285	SHEET NO. EC-05/CONST.04
RW SHEET NO.	
ROADWAY DESIGN ENGINEER	HYDRAULICS ENGINEER



-L- STA. 16+50 (LT.)  
-L- STA. 18+67 (LT.)