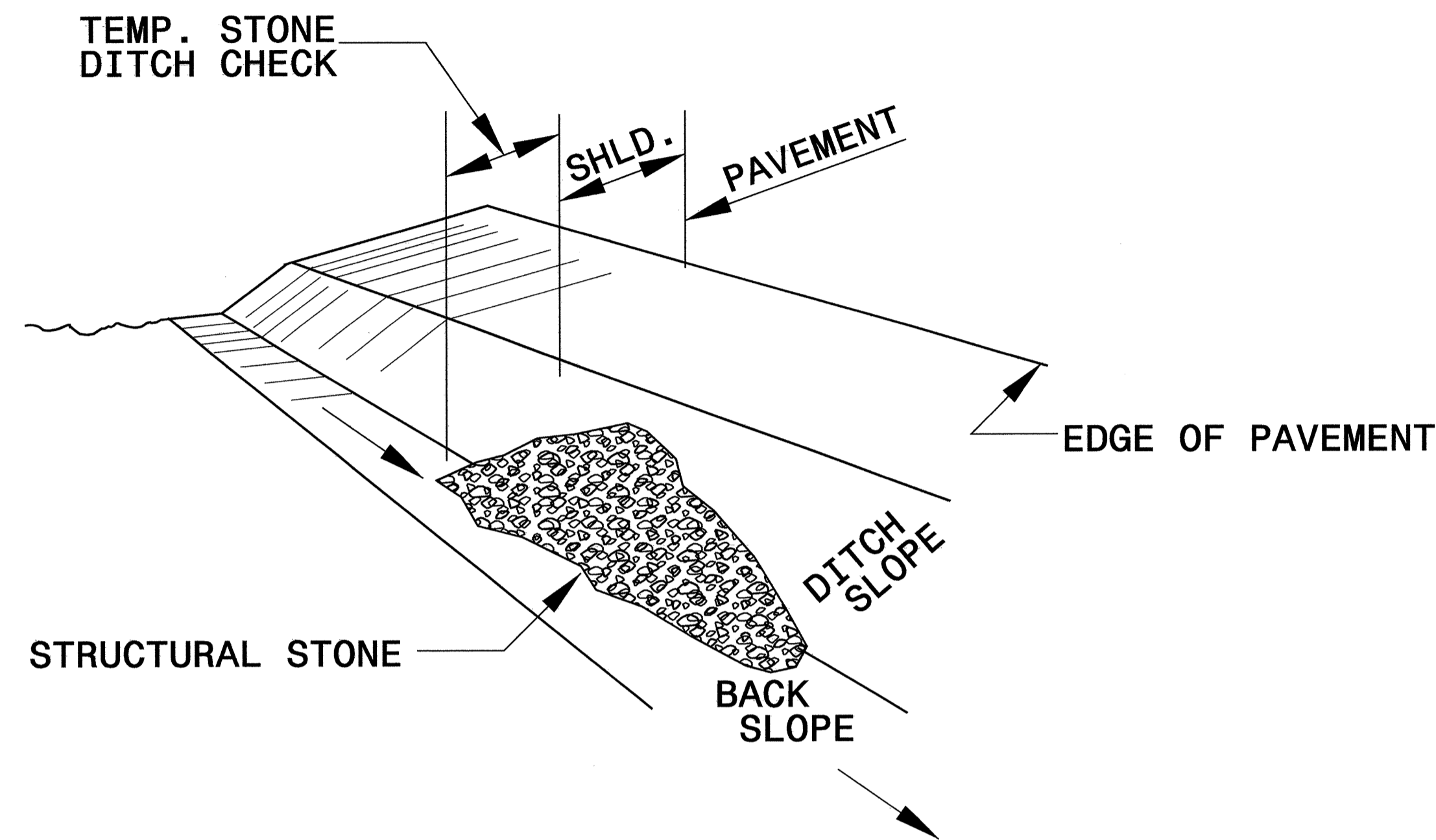


PROJECT REFERENCE NO. B-4015	SHEET NO. EC-2
RW SHEET NO.	
ROADWAY DESIGN ENGINEER	HYDRAULICS ENGINEER

TEMPORARY ROCK SILT CHECK TYPE 'B' DETAIL

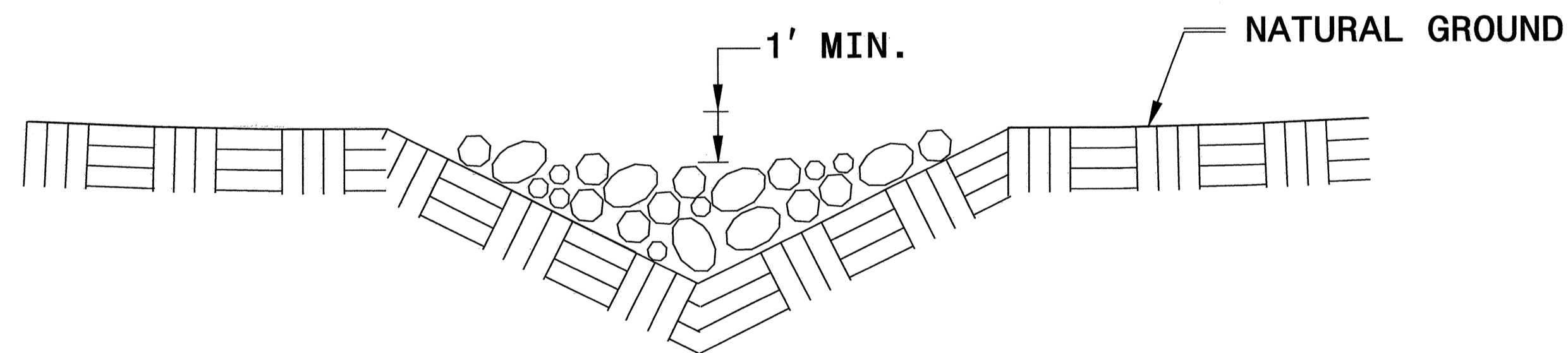


ISOMETRIC VIEW

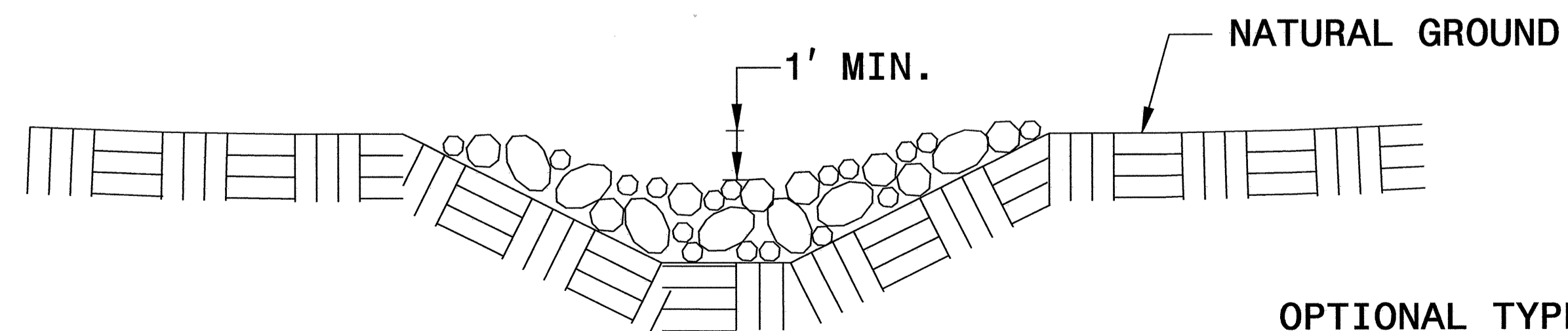
NOTES:

USE CLASS 'B' EROSION CONTROL STONE FOR STRUCTURAL STONE.

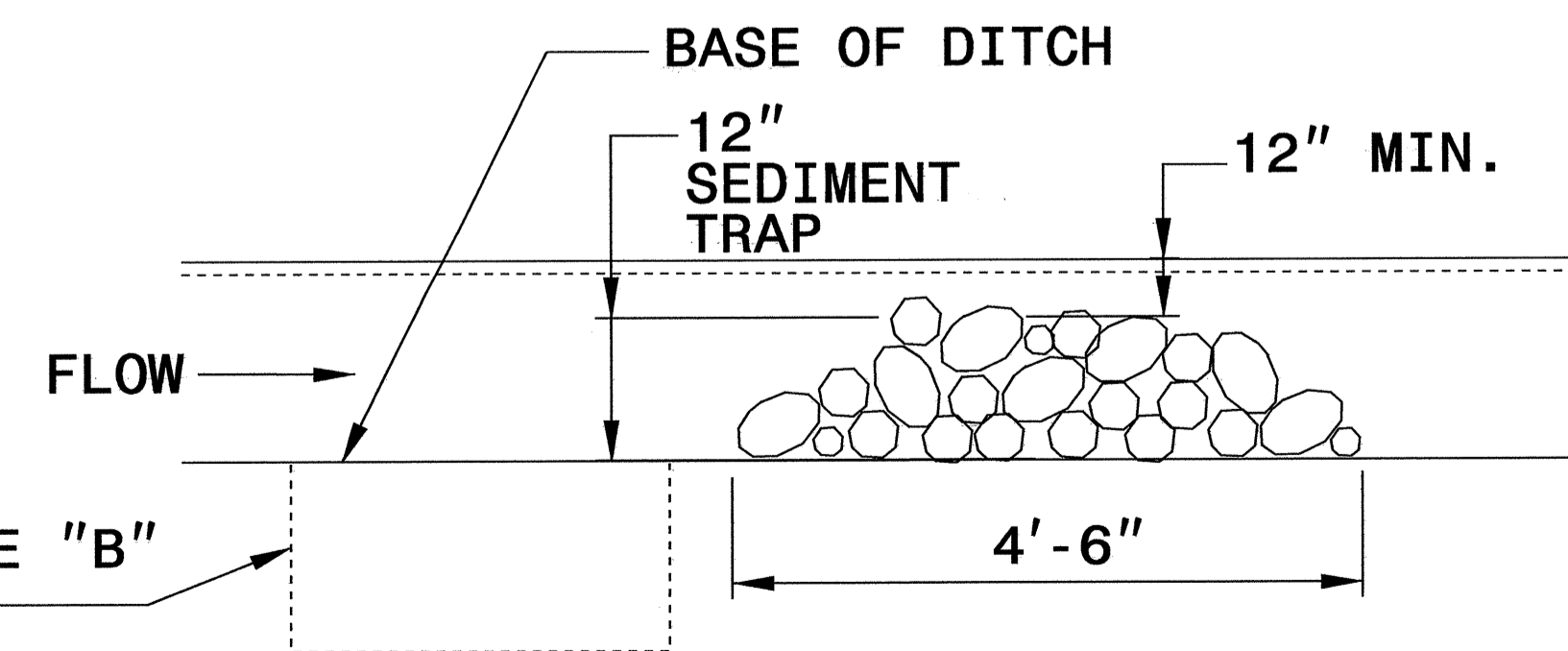
THE ENGINEER MAY DIRECT THE OPTION OF CLASS "A" STONE FOR SITES HAVING LESS THAN ONE (1) ACRE DRAINAGE AREA AND A DITCH GRADE LESS THAN 3%.



CROSS SECTION VEE DITCH



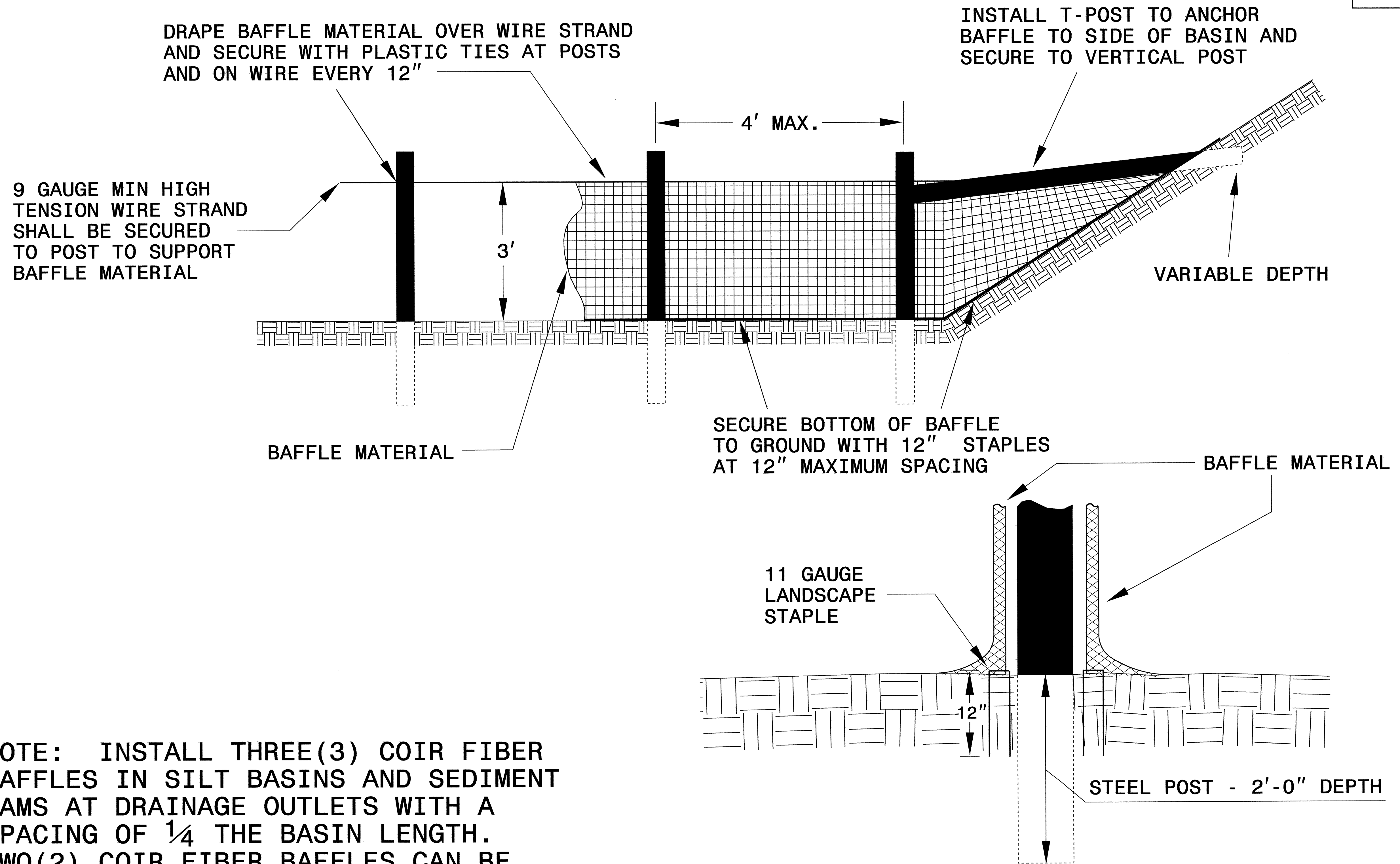
CROSS SECTION TRAPEZOIDAL DITCH



ELEVATION VIEW

PROJECT REFERENCE NO. B-4015	SHEET NO. EC-2A
RW SHEET NO.	
ROADWAY DESIGN ENGINEER	HYDRAULICS ENGINEER

COIR FIBER BAFFLE DETAIL

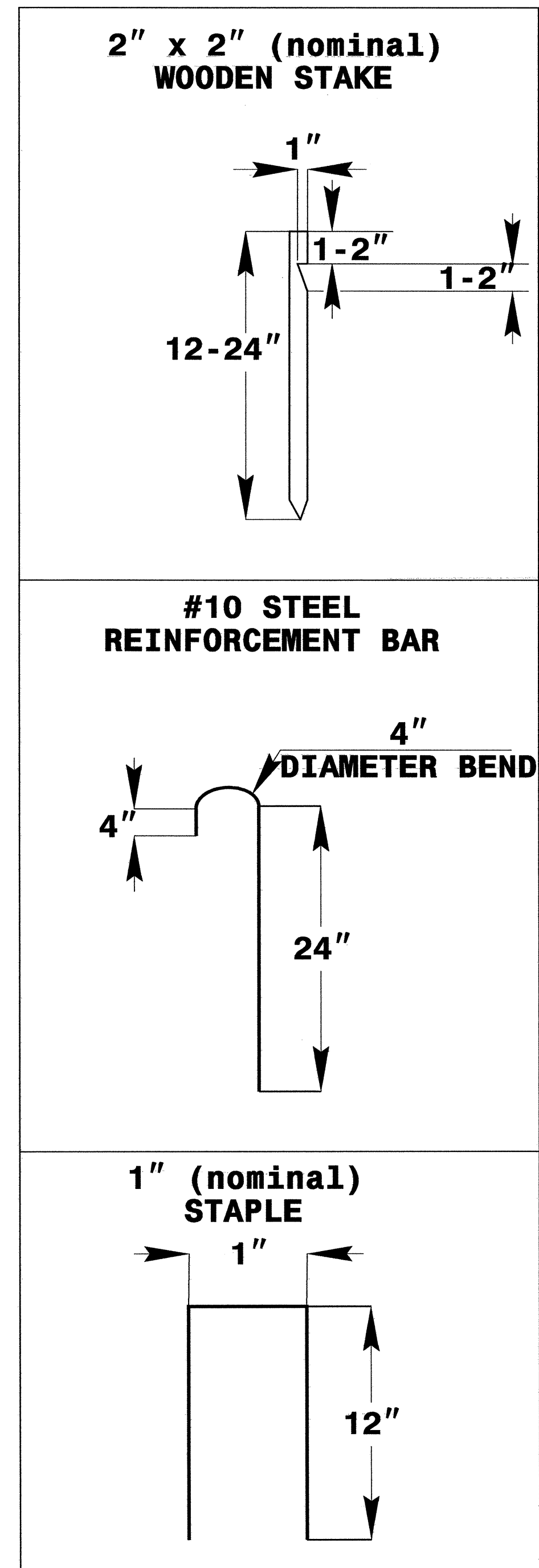
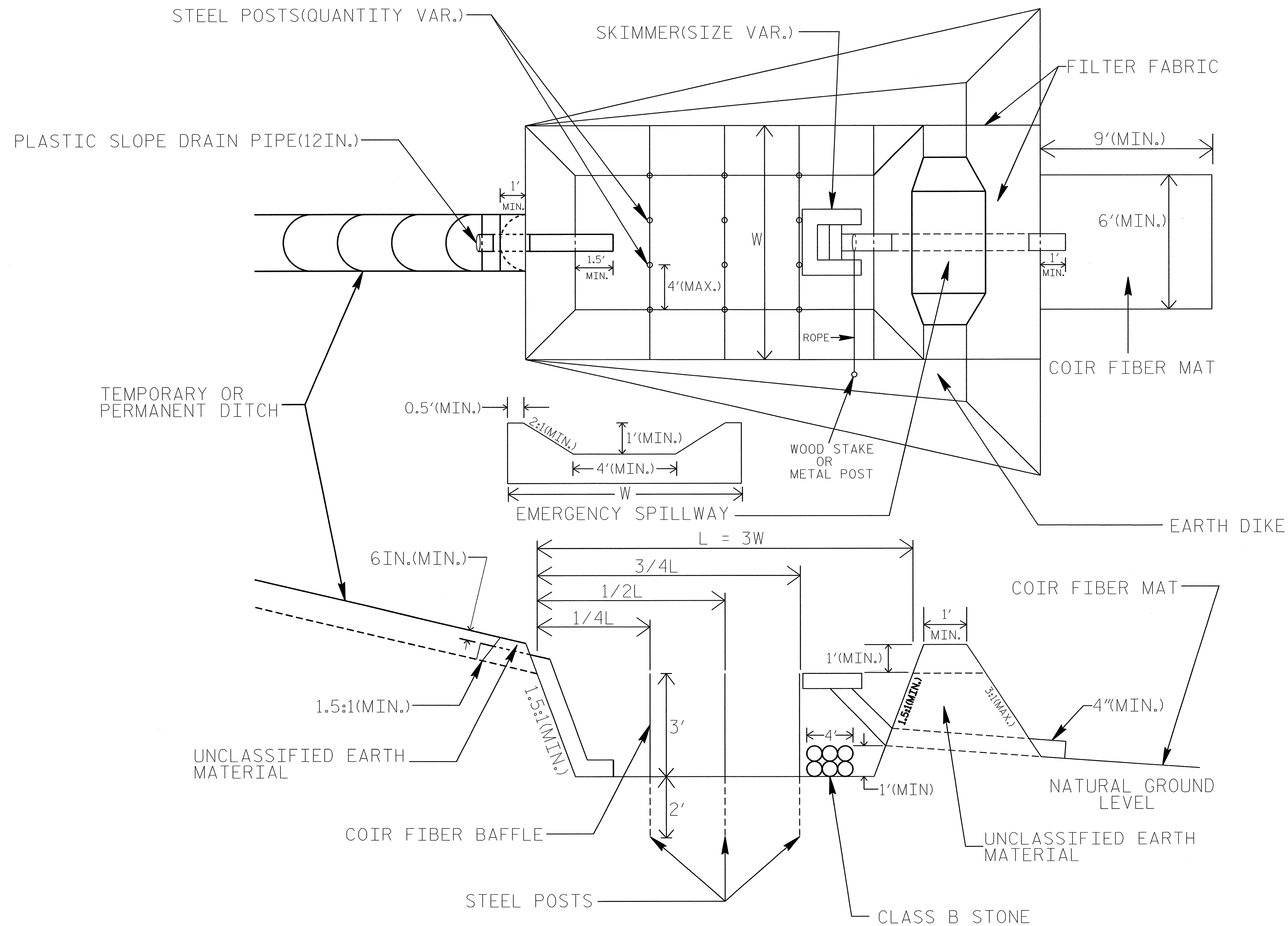


NOTE: INSTALL THREE(3) COIR FIBER BAFFLES IN SILT BASINS AND SEDIMENT DAMS AT DRAINAGE OUTLETS WITH A SPACING OF $\frac{1}{4}$ THE BASIN LENGTH. TWO(2) COIR FIBER BAFFLES CAN BE INSTALLED IN SILT BASINS AND DAMS LESS THAN 20 FT. IN LENGTH WITH A SPACING OF $\frac{1}{3}$ THE BASIN LENGTH.

BAFFLE MATERIAL SHALL BE SECURED TO THE BOTTOM AND SIDES OF BASIN USING 12" LANDSCAPE STAPLES

SKIMMER BASIN WITH BAFFLES DETAIL

PROJECT REFERENCE NO. B-4015	SHEET NO. EC-2B
RW SHEET NO.	
ROADWAY DESIGN ENGINEER	HYDRAULICS ENGINEER



COIR FIBER MAT ANCHOR OPTIONS

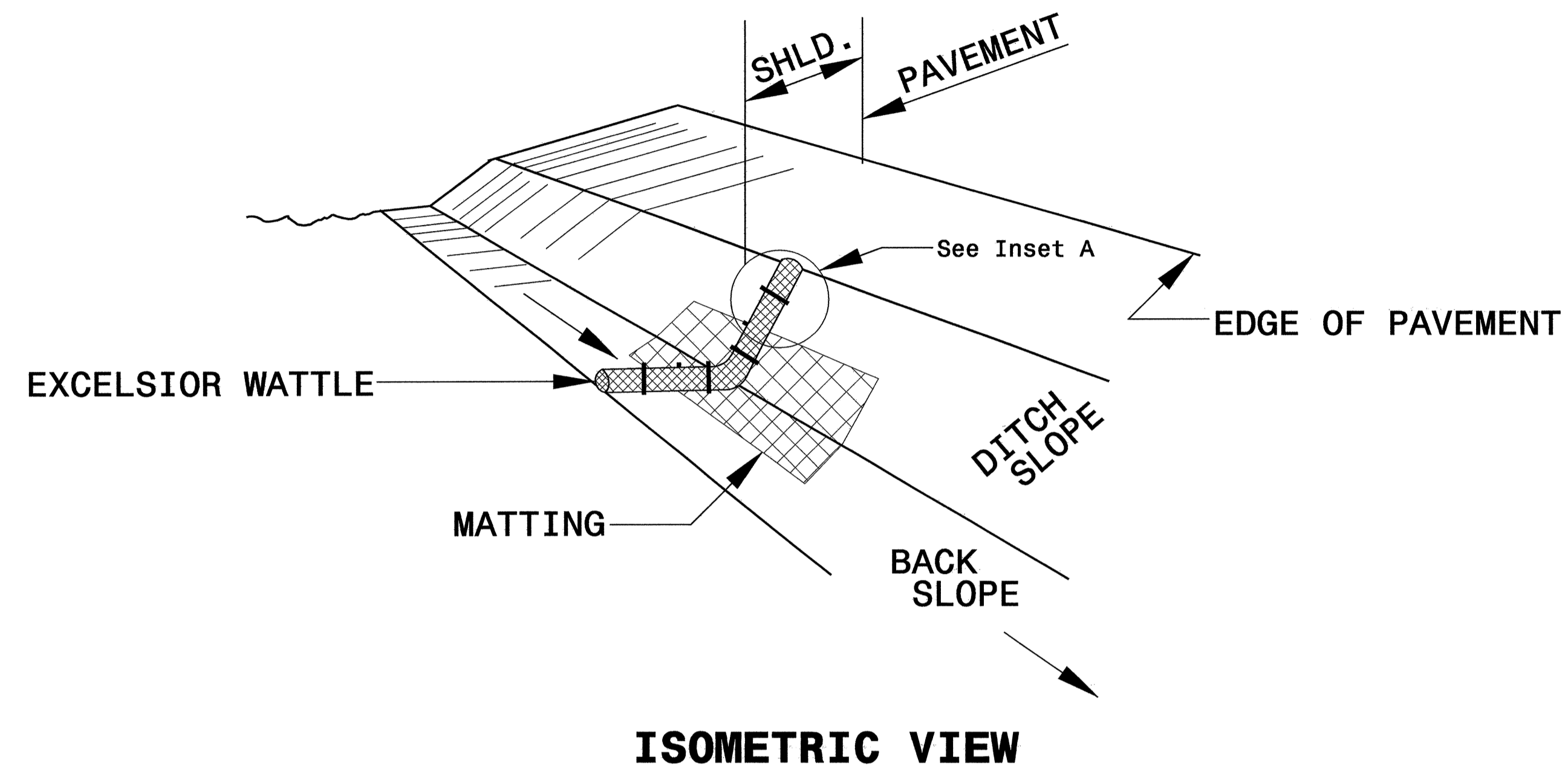
NOTES

1. SEED AND PLACE MATTING FOR EROSION CONTROL ON INTERIOR SIDESLOPES.
2. LIMIT EARTH DIKE HEIGHT TO 5 FT.
3. THE MINIMUM BASIN WIDTH SHALL BE 9 FT.
4. DETERMINE EMERGENCY SPILLWAY LENGTH (FT.) USING $Q/0.8$, WHERE Q IS FLOW RATE (CFS) INTO BASIN.

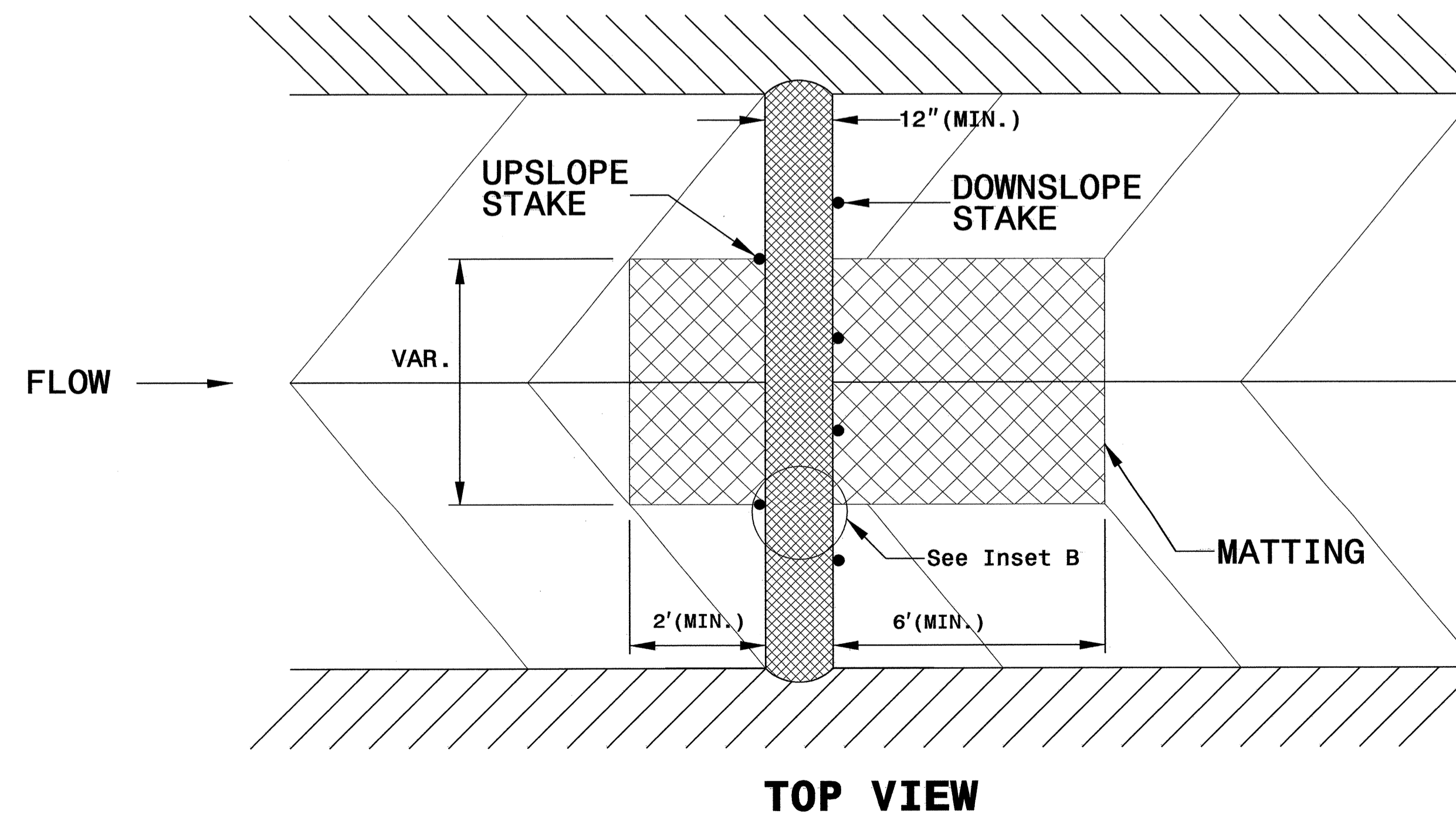
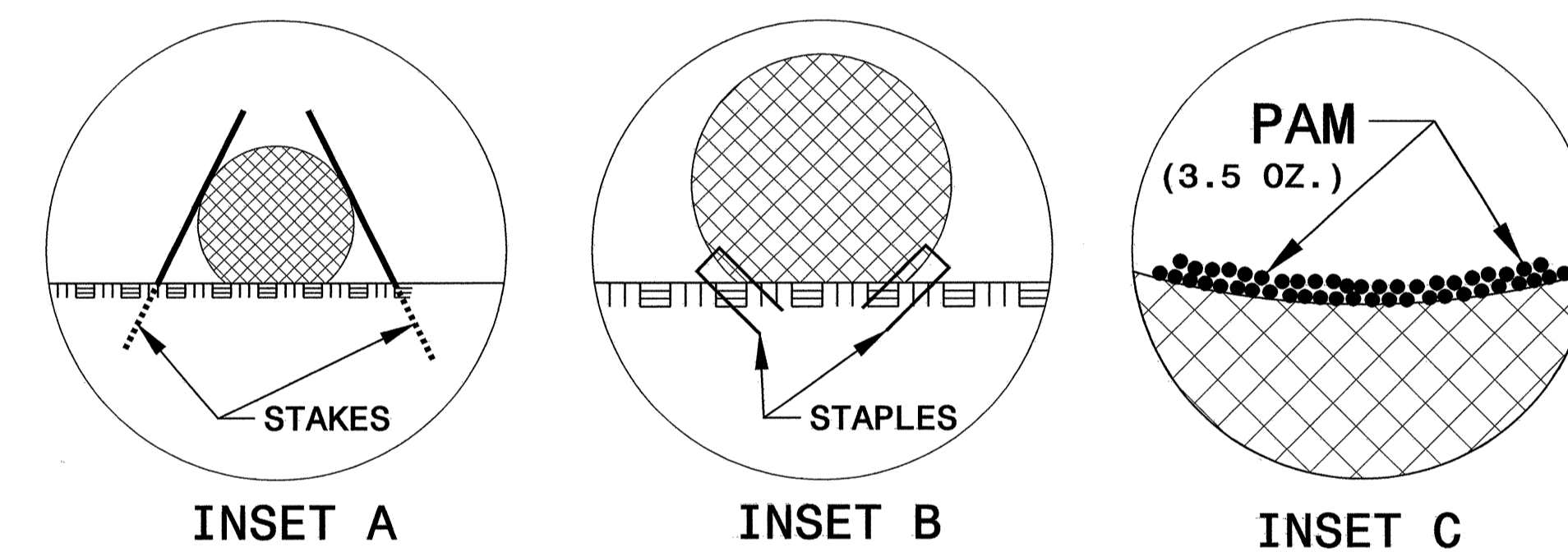
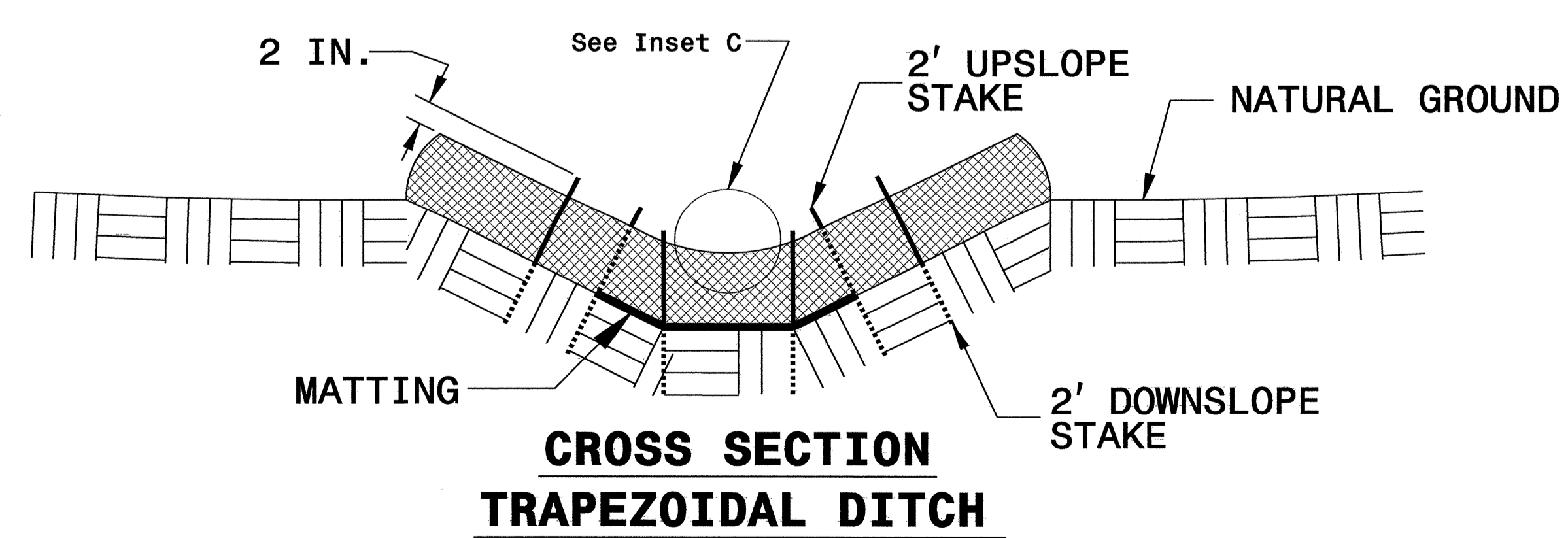
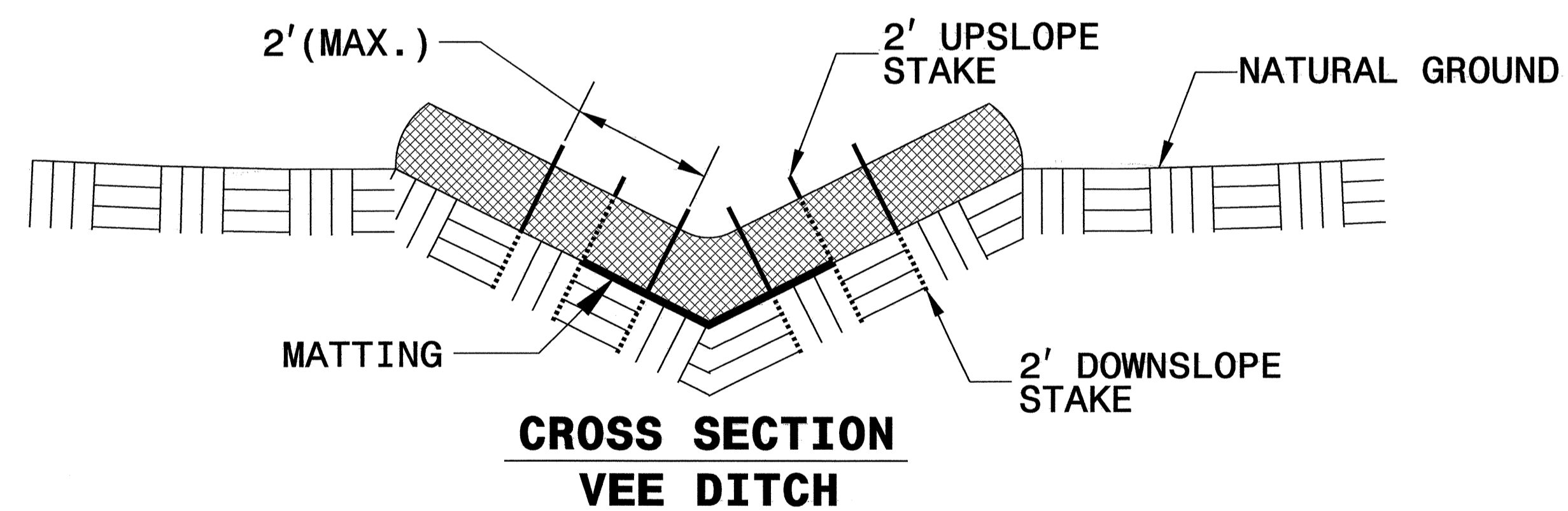
NOT TO SCALE

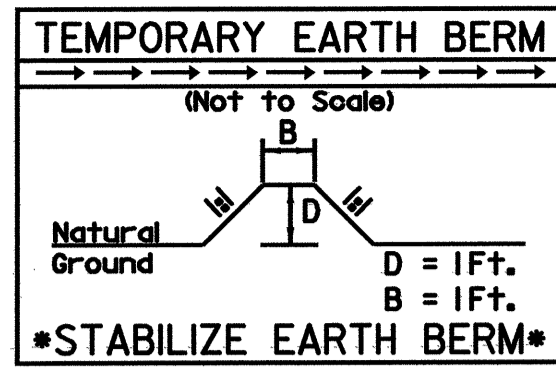
PROJECT REFERENCE NO. B-4015	SHEET NO. EC-2C
RW SHEET NO.	
ROADWAY DESIGN ENGINEER	HYDRAULICS ENGINEER

WATTLE WITH POLYACRYLAMIDE DETAIL



- NOTES:
- USE MINIMUM 12 IN. DIAMETER EXCELSIOR WATTLE.
 - USE 2 FT. WOODEN STAKES WITH A 2 IN. BY 2 IN. CROSS SECTION.
 - INSTALL A MINIMUM OF 2 UPSLOPE STAKES AND 4 DOWNSLOPE STAKES AT AN ANGLE TO WEDGE WATTLE TO BOTTOM OF DITCH.
 - PROVIDE STAPLES MADE OF 0.125 IN. DIAMETER STEEL WIRE FORMED INTO A U SHAPE NOT LESS THAN 12" IN LENGTH.
 - INSTALL STAPLES APPROXIMATELY EVERY 1 LINEAR FOOT ON BOTH SIDES OF WATTLE AND AT EACH END TO SECURE IT TO THE SOIL.
 - INSTALL MATTING IN ACCORDANCE WITH SECTION 1631 OF THE STANDARD SPECIFICATIONS.
 - INITIALLY APPLY 3.5 OUNCES OF ANIONIC OR NEUTRALLY CHARGED POLYACRYLAMIDE (PAM) OVER WATTLE WHERE WATER WILL FLOW AND AFTER EVERY RAINFALL EVENT THAT IS EQUAL TO OR EXCEEDS 0.25 IN.



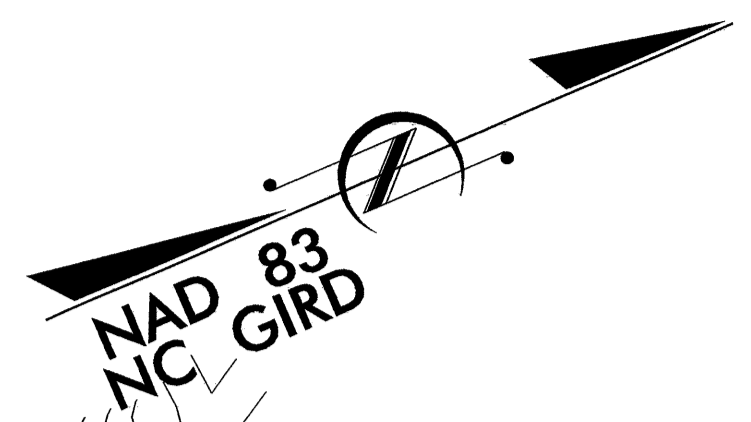


DB 176 PG 1690
TRACT TWO

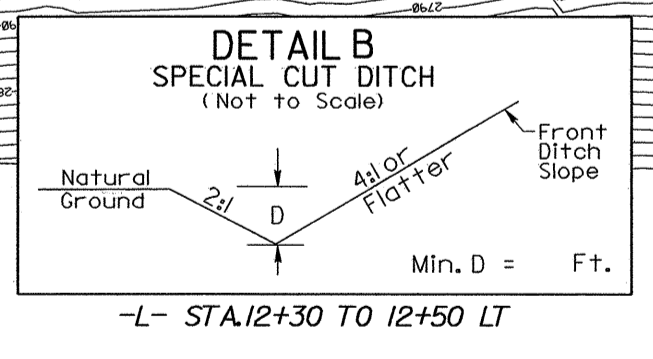
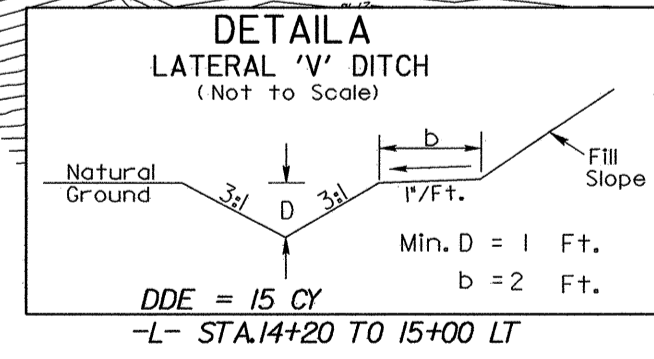
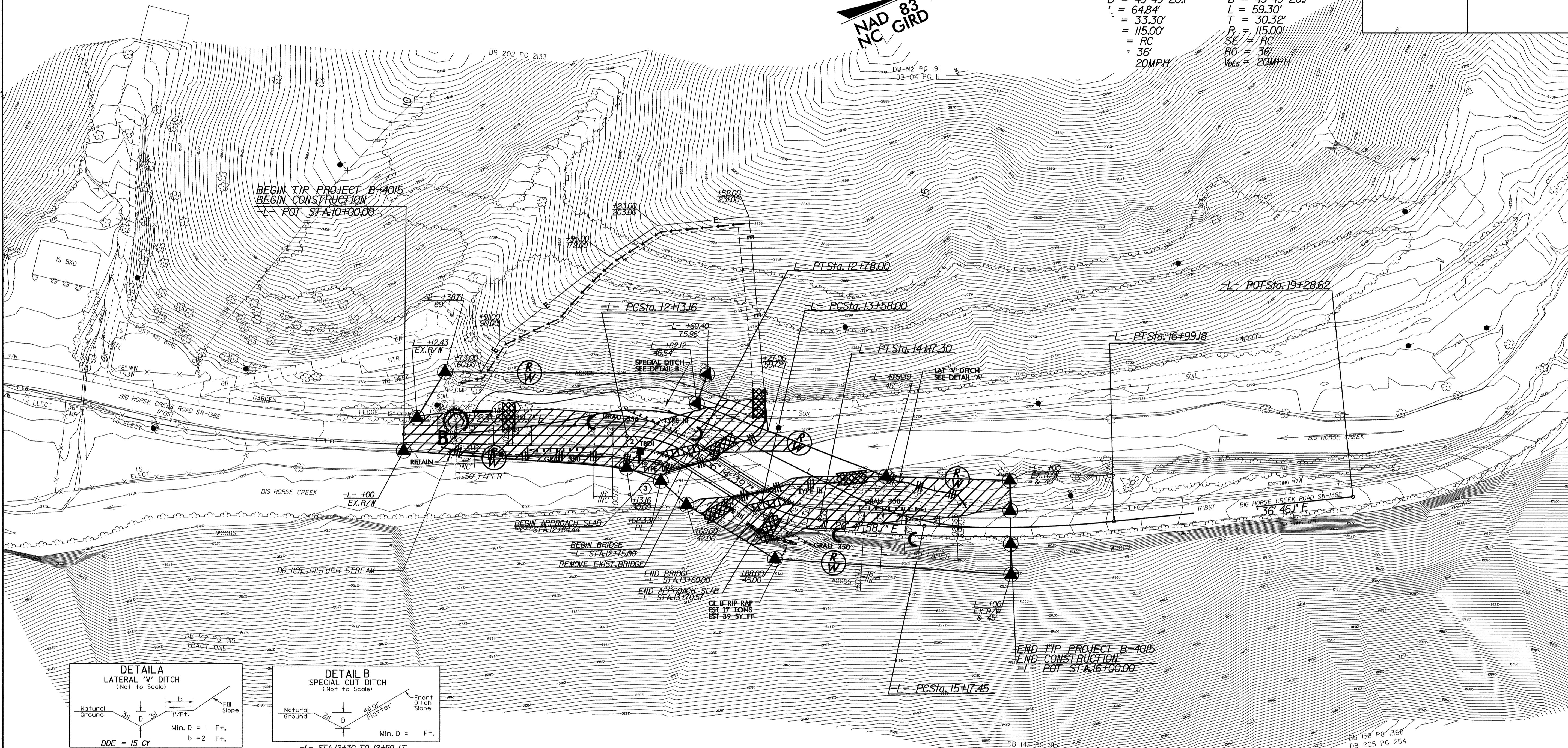
PROJECT REFERENCE NO.	SHEET NO.
B-4015	EC-04/CONST.04
RW SHEET NO.	
ROADWAY DESIGN ENGINEER	HYDRAULICS ENGINEER

-L-

PI Sta 12+46.46	PI Sta 13+88.32
$\Delta = 32' 18" 10.0" (RT)$	$\Delta = 29' 32" 41.0" (LT)$
$D = 49' 49" 20.7"$	$D = 49' 49" 20.7"$
$L = 64.84'$	$L = 59.30'$
$T = 33.30'$	$T = 30.32'$
$R = 115.00'$	$R = 115.00'$
$SE = RC$	$SE = RC$
$RO = 36'$	$RO = 36'$
$20MPH$	$20MPH$



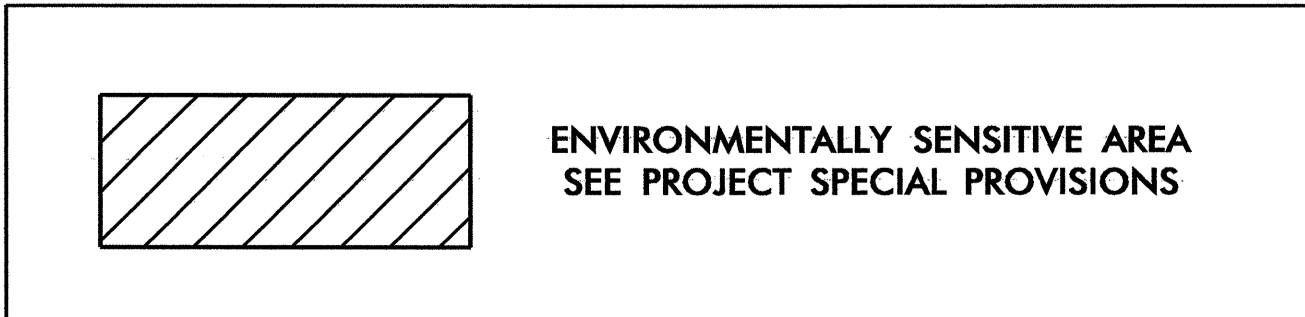
REVISIONS



CLEARING AND GRUBBING
EROSION CONTROL FOR
CONSTRUCTION SHEET 04

NOTE:
PLACE TEMPORARY ROCK SEDIMENT DAMS TYPE - B
AND TEMPORARY ROCK SILT CHECKS TYPE - A AT
DRAINAGE OUTLETS.

NOTE:
UTILIZE SPECIAL STILLING BASIN AS STILLING BASIN
WHERE APPLICABLE.

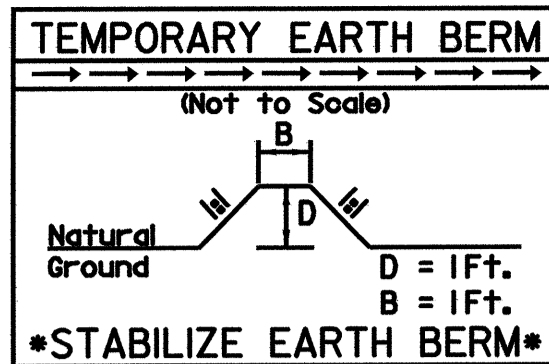


DB Y5 PG 129

DB 139 PG 1526
DB-218 PG 2208

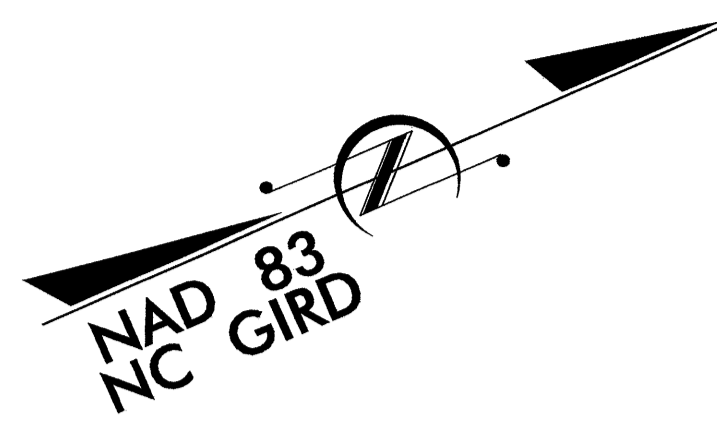
DB 158 PG 1368
DB 205 PG 254

PROJECT REFERENCE NO.	SHEET NO.
B-4015	EC-06/CONST.04
RW SHEET NO.	
ROADWAY DESIGN ENGINEER	HYDRAULICS ENGINEER



DB 176 PG 1690
TRACT TWO

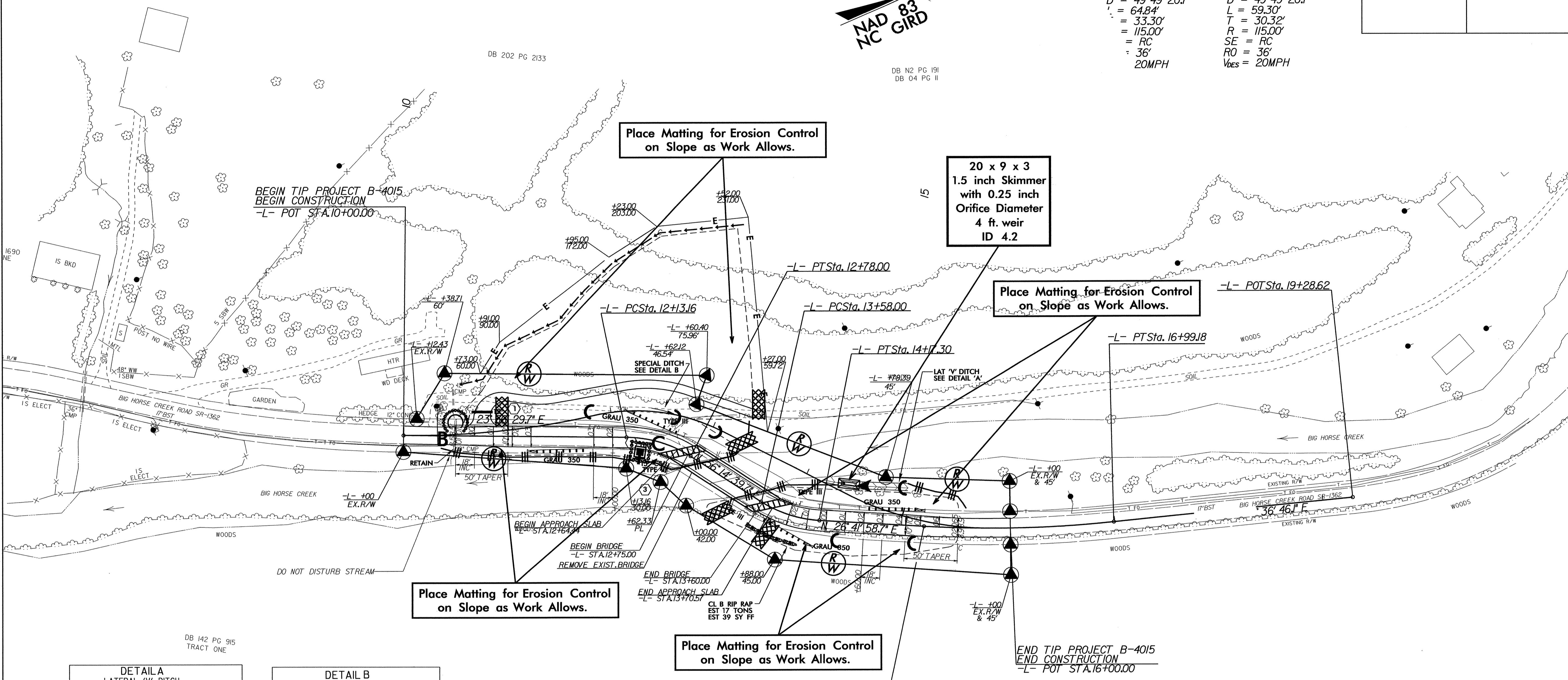
DB 202 PG 2133



DB N2 PG 191
DB 04 PG II

PI Sta 12+46.46 Δ = 32° 18' 10.0" (RT) D = 49° 49' 20.7" L = 64.84' T = 33.30' R = 115.00' SE = RC RO = 36' Voes = 20MPH	-L-	PI Sta 13+88.32 Δ = 29° 32' 41.0" (LT) D = 49° 49' 20.7" L = 59.30' T = 30.32' R = 115.00' SE = RC RO = 36' Voes = 20MPH
--	-----	--

REVISIONS



BEGIN TIP PROJECT B-4015
BEGIN CONSTRUCTION
-L- POT STA. 10+00.00

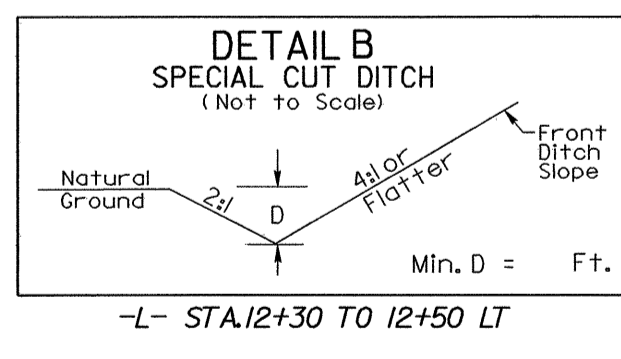
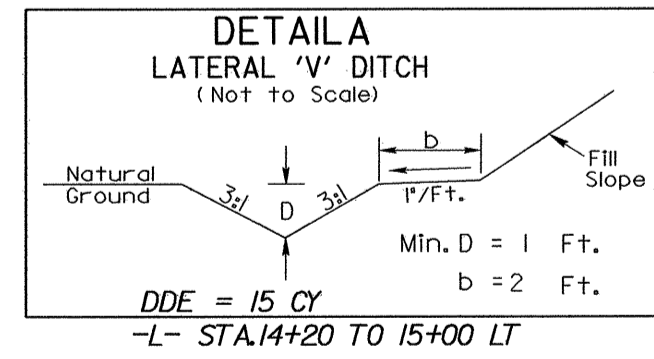
-L- POT Sta. 19+28.62

Place Matting for Erosion Control
on Slope as Work Allows.

Place Matting for Erosion Control
on Slope as Work Allows.

Place Matting for Erosion Control
on Slope as Work Allows.

END TIP PROJECT B-4015
END CONSTRUCTION
-L- POT STA. 16+00.00



NOTE:
UTILIZE SPECIAL STILLING BASIN AS STILLING BASIN
WHERE APPLICABLE.

DB Y5 PG 129

DB 139 PG 1526
DB-218 PG 2208

DB 142 PG 915
TRACT TWO

DB 158 PG 1368
DB 205 PG 254