

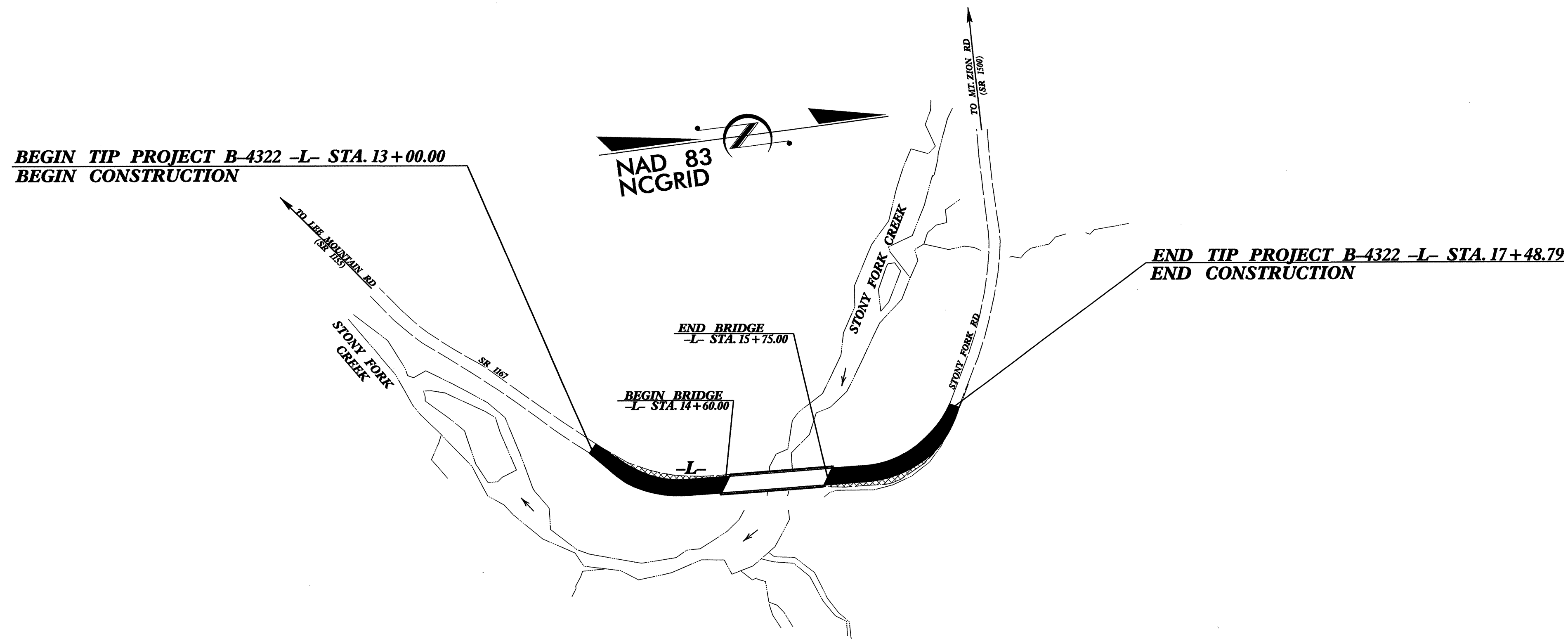
TIP PROJECT: B-4322

STATE OF NORTH CAROLINA
 DIVISION OF HIGHWAYS
 PLAN FOR PROPOSED
 HIGHWAY EROSION CONTROL

WILKES COUNTY

**LOCATION: BRIDGE NO. 71 OVER STONY FORK CREEK
 ON SR 1167 (STONY FORK RD.)**

TYPE OF WORK: GRADING, DRAINAGE, PAVING & STRUCTURE



STATE	STATE PROJECT REFERENCE NO.	SHEET NO.	TOTAL SHEETS
N.C.	B-4322	EC-1	
STATE PROJ. NO.	F.A. PROJ. NO.	DESCRIPTION	

EROSION AND SEDIMENT CONTROL MEASURES

Std. #	Description	Symbol
1630.03	Temporary Silt Ditch	TD
1630.05	Temporary Diversion	TD
1605.01	Temporary Silt Fence	III III III
1606.01	Special Sediment Control Fence	III III III
1622.01	Temporary Berms and Slope Drains	—
1630.01	Riser Basin	⊖
	Silt Basin Type B	⊖
1633.01	Temporary Rock Silt Check Type-A	⊖
	Temporary Rock Silt Check Type-B	⊖
	Wattle	⊖
1634.01	Temporary Rock Sediment Dam Type-A	⊖
1634.02	Temporary Rock Sediment Dam Type-B	⊖
1635.01	Rock Pipe Inlet Sediment Trap Type-A	⊖
1635.02	Rock Pipe Inlet Sediment Trap Type-B	⊖
1630.04	Stilling Basin	⊖
1630.06	Special Stilling Basin	⊖
	Rock Inlet Sediment Trap:	
1632.01	Type A	A
1632.02	Type B	B
1632.03	Type C	C
	Skimmer Basin	⊖
	Tiered Skimmer Basin	⊖
	Infiltration Basin	⊖

**THIS PROJECT CONTAINS
 EROSION CONTROL PLANS
 FOR CLEARING AND
 GRUBBING PHASE OF
 CONSTRUCTION.**

**THIS PROJECT HAS
 BEEN DESIGNED TO
 SENSITIVE WATERSHED
 STANDARDS.**

**ENVIRONMENTALLY
 SENSITIVE AREA(S) EXIST
 ON THIS PROJECT**
*Refer To E. C. Special Provisions
 for Special Considerations.*

GRAPHIC SCALE

0

PLANS

0

PROFILE (HORIZONTAL)

0

PROFILE (VERTICAL)

ROADSIDE ENVIRONMENTAL UNIT
 DIVISION OF HIGHWAYS
 STATE OF NORTH CAROLINA

Prepared In the Office of:
ROADSIDE ENVIRONMENTAL UNIT
 1 South Wilmington St.
 Raleigh, NC 27611
2006 STANDARD SPECIFICATIONS

Roadway Standard Drawings

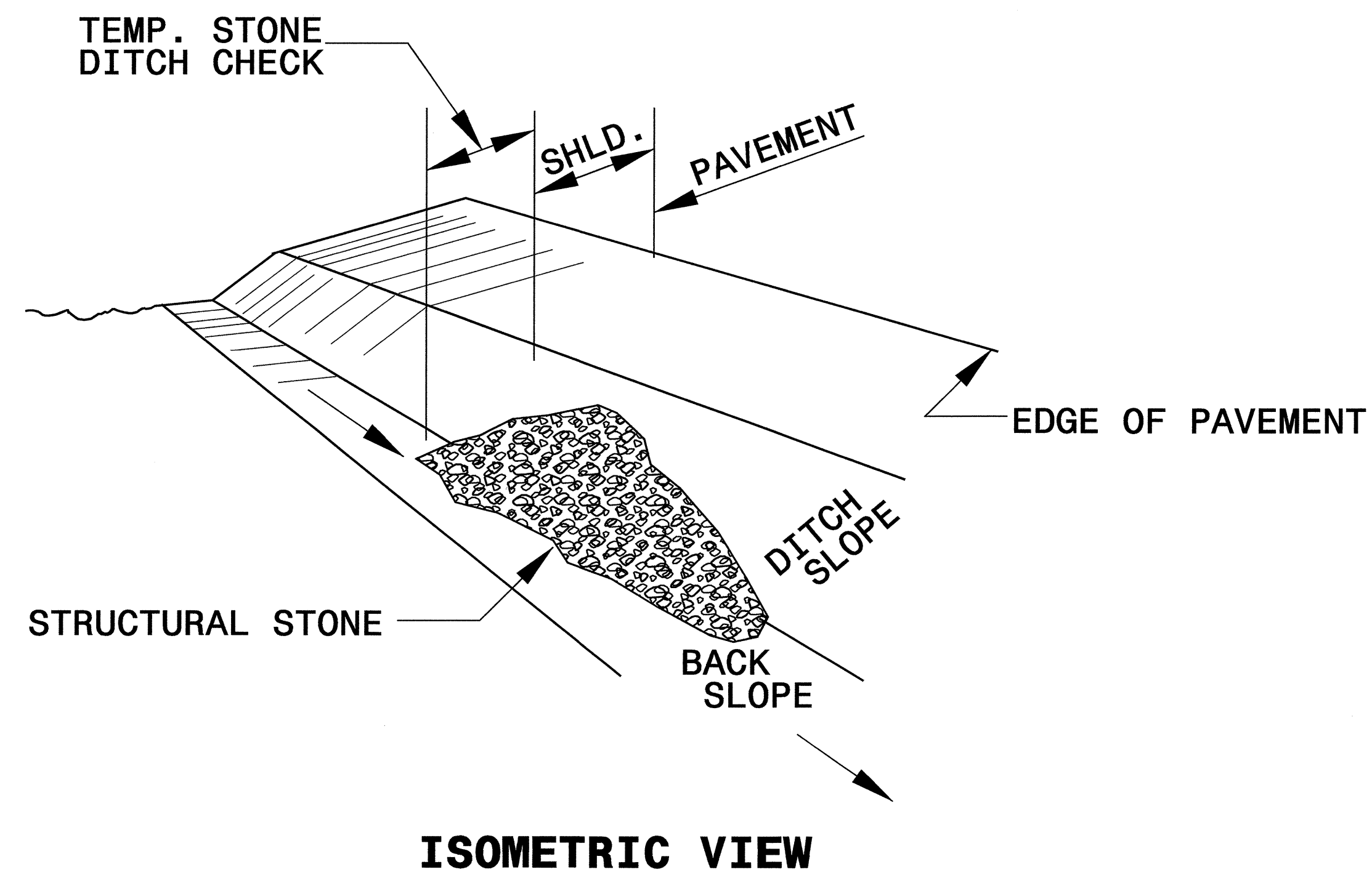
The following roadway english standards as appear in "Roadway Standard Drawings"- Roadway Design Unit - N. C. Department of Transportation - Raleigh, N. C., dated July 18, 2006 and the latest revision thereto are applicable to this project and by reference hereby are considered a part of these plans.

1605.01 Temporary Silt Fence	1630.06 Special Stilling Basin
1607.01 Gravel Construction Entrance	1632.01 Rock Inlet Sediment Trap Type A
1630.03 Temporary Silt Ditch	1635.02 Rock Pipe Inlet Sediment Trap Type B
1630.05 Temporary Diversion	

O:\LIC-2008-1405
 Projects\B-4322\REN222.dgn
 REN222.dwg
 cd-tan
 11/11/08 10:45 AM

PROJECT REFERENCE NO. B-4322	SHEET NO. EC-2
RW SHEET NO.	
ROADWAY DESIGN ENGINEER	HYDRAULICS ENGINEER

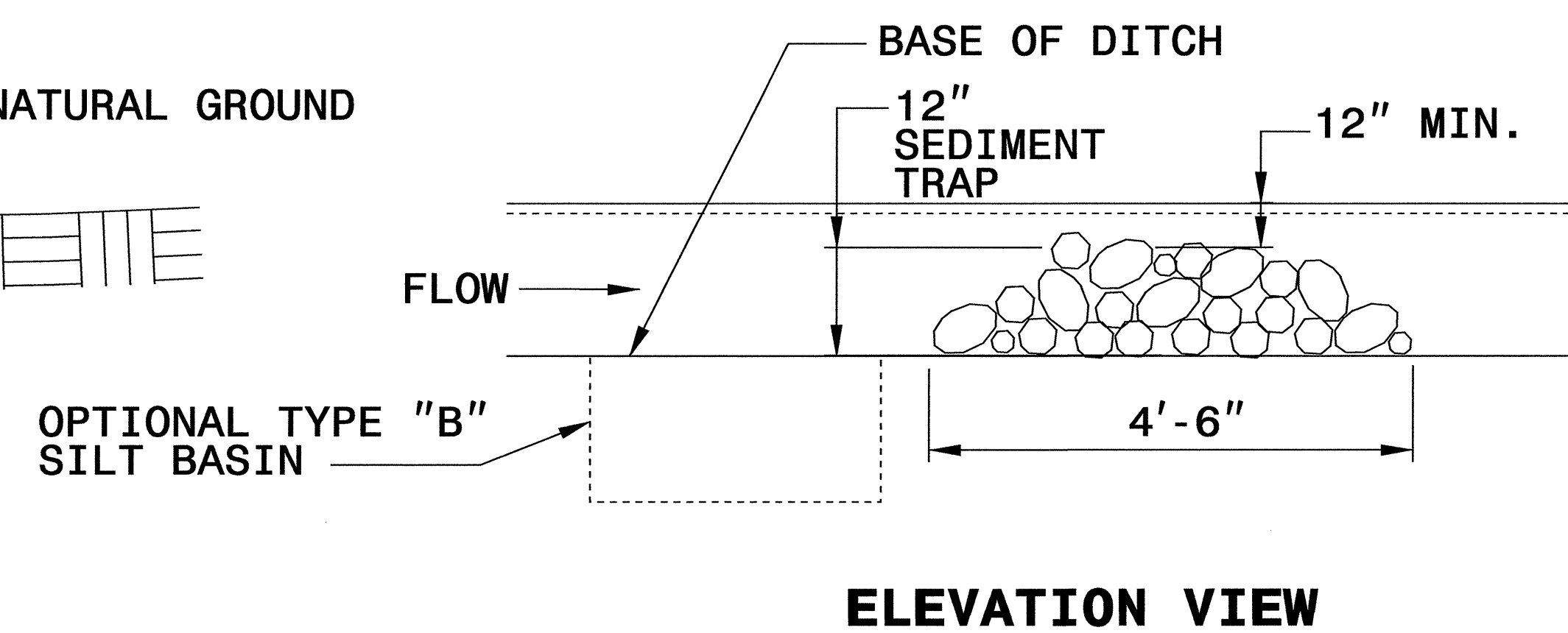
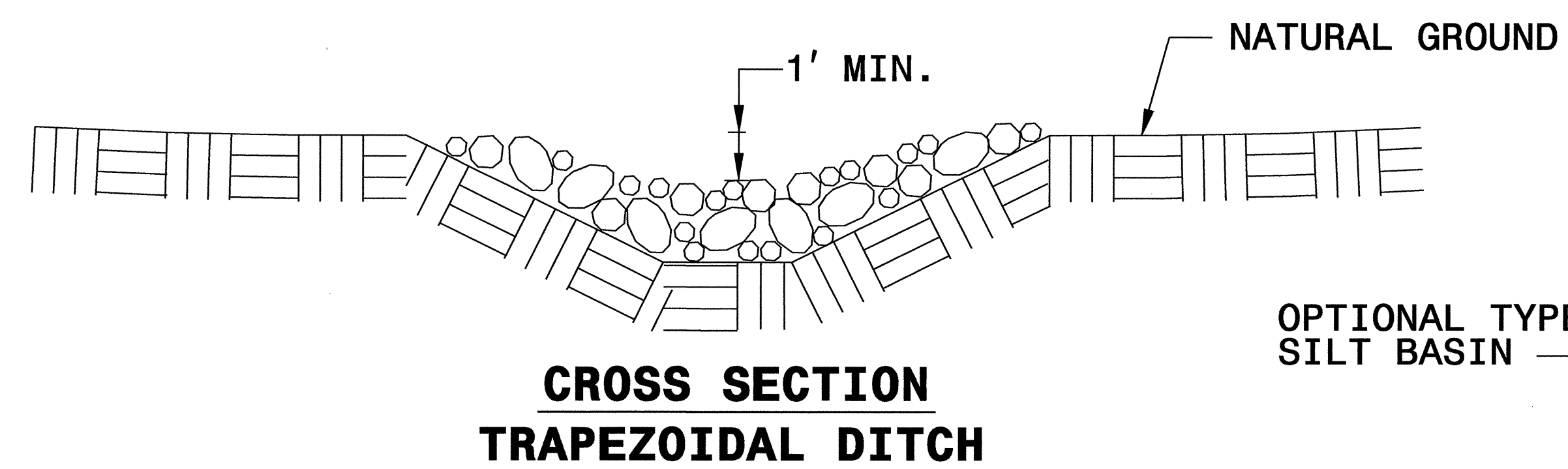
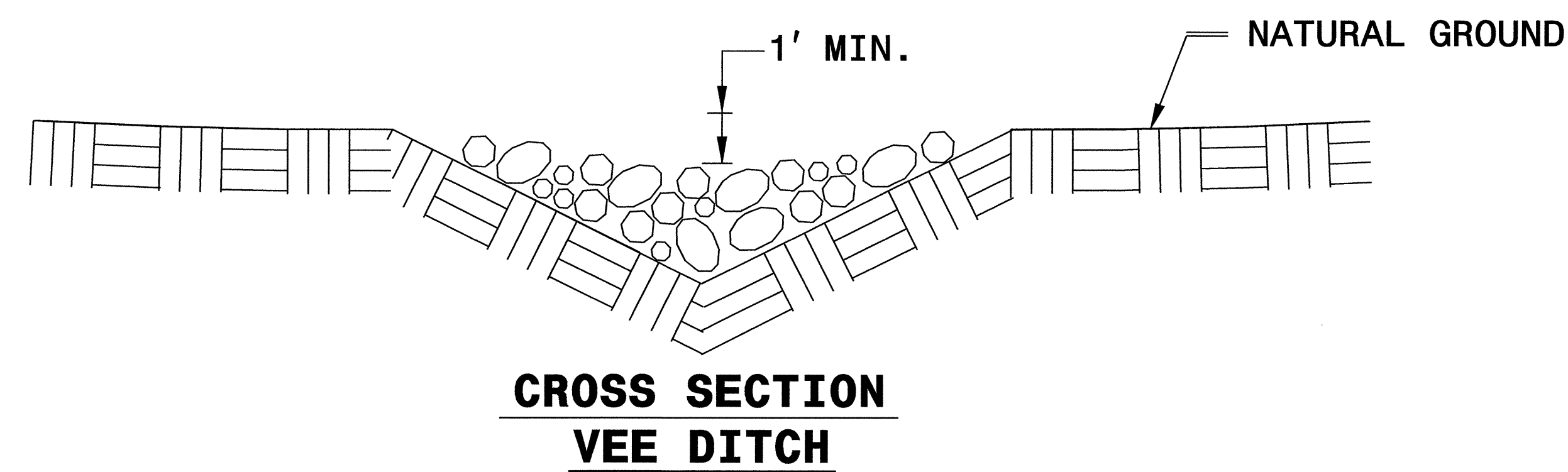
TEMPORARY ROCK SILT CHECK TYPE 'B' DETAIL



NOTES:

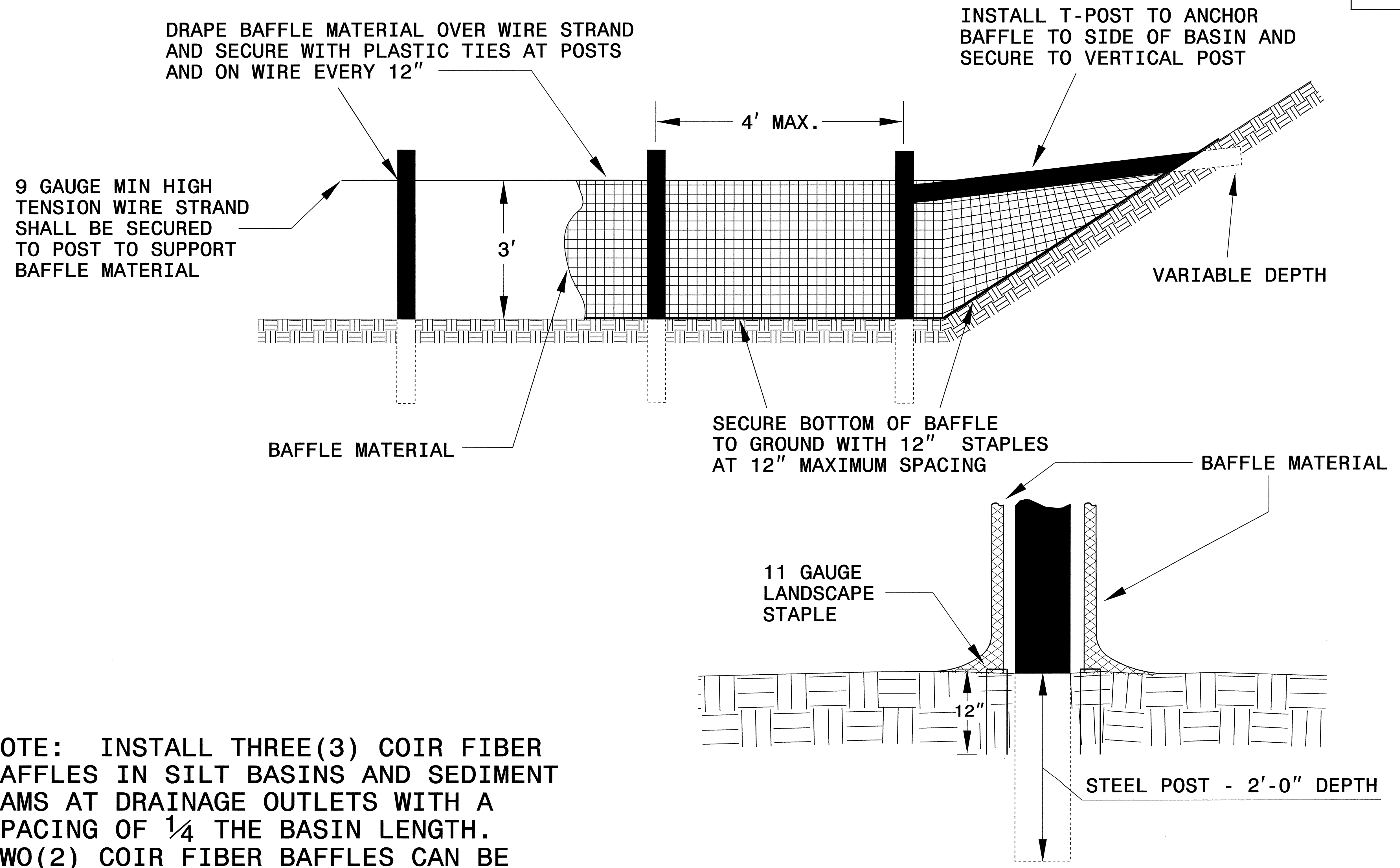
USE CLASS 'B' EROSION CONTROL STONE FOR STRUCTURAL STONE.

THE ENGINEER MAY DIRECT THE OPTION OF CLASS "A" STONE FOR SITES HAVING LESS THAN ONE (1) ACRE DRAINAGE AREA AND A DITCH GRADE LESS THAN 3%.



PROJECT REFERENCE NO. B-4322	SHEET NO. EC-2A
RW SHEET NO.	
ROADWAY DESIGN ENGINEER	HYDRAULICS ENGINEER

COIR FIBER BAFFLE DETAIL

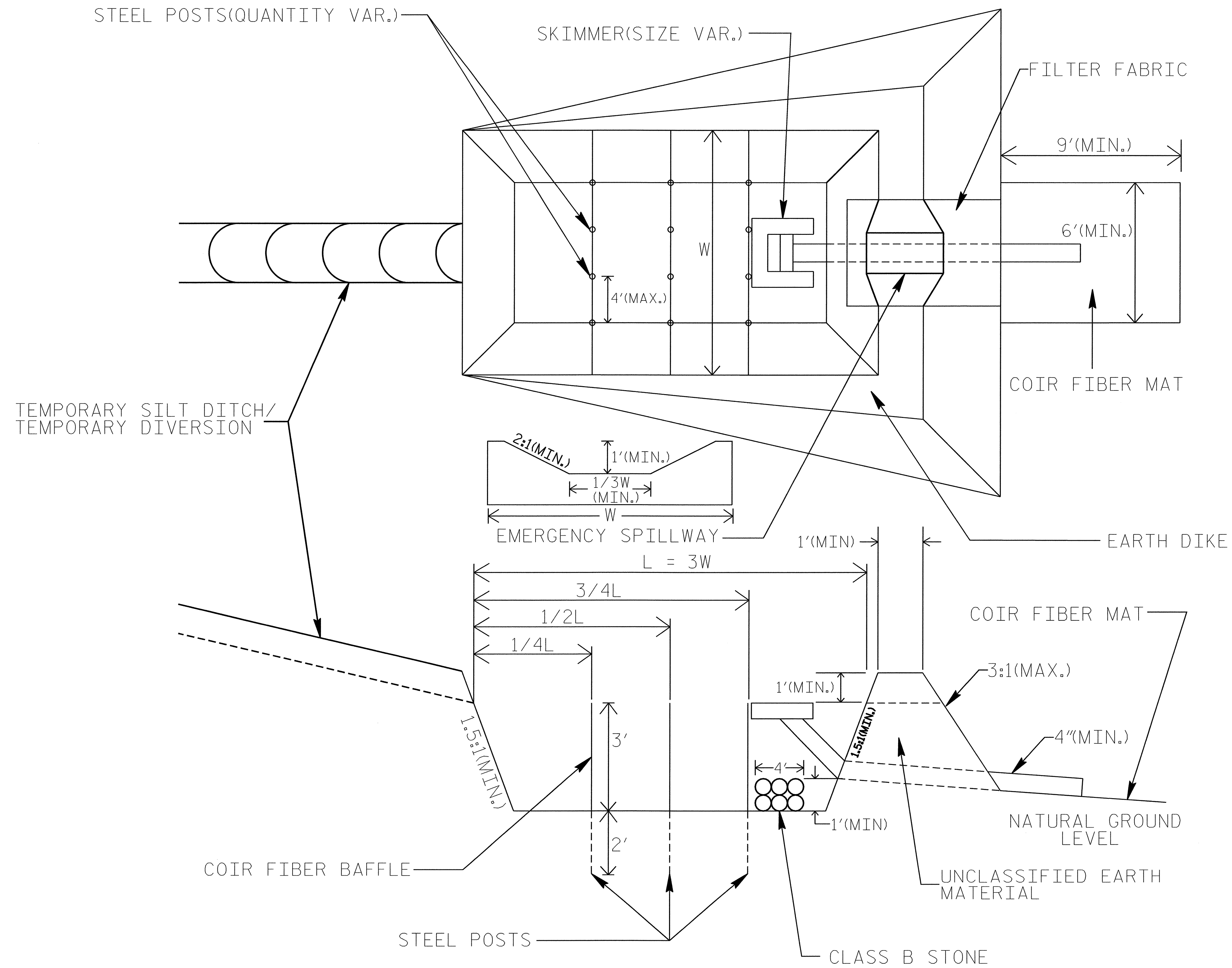


NOTE: INSTALL THREE(3) COIR FIBER BAFFLES IN SILT BASINS AND SEDIMENT DAMS AT DRAINAGE OUTLETS WITH A SPACING OF $\frac{1}{4}$ THE BASIN LENGTH. TWO(2) COIR FIBER BAFFLES CAN BE INSTALLED IN SILT BASINS AND DAMS LESS THAN 20 FT. IN LENGTH WITH A SPACING OF $\frac{1}{3}$ THE BASIN LENGTH.

BAFFLE MATERIAL SHALL BE SECURED TO THE BOTTOM AND SIDES OF BASIN USING 12" LANDSCAPE STAPLES

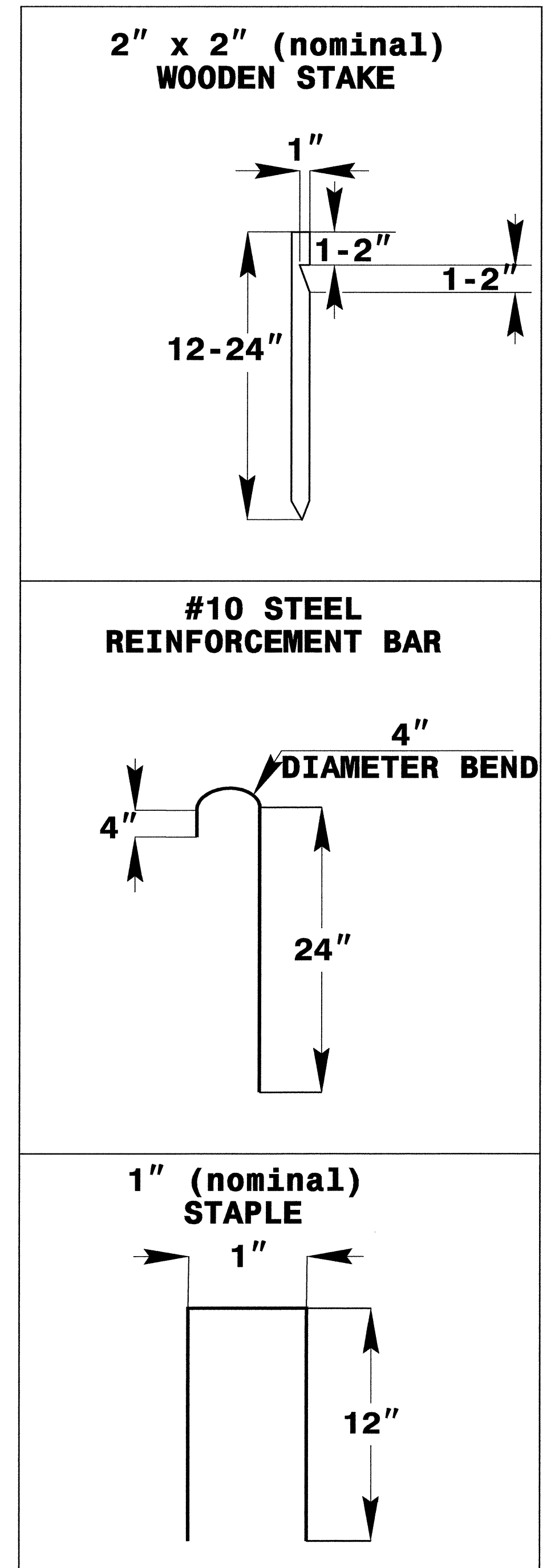
SKIMMER BASIN WITH BAFFLES DETAIL

PROJECT REFERENCE NO. B-4322	SHEET NO. EC-2B
RW SHEET NO.	
ROADWAY DESIGN ENGINEER	HYDRAULICS ENGINEER



NOTES:

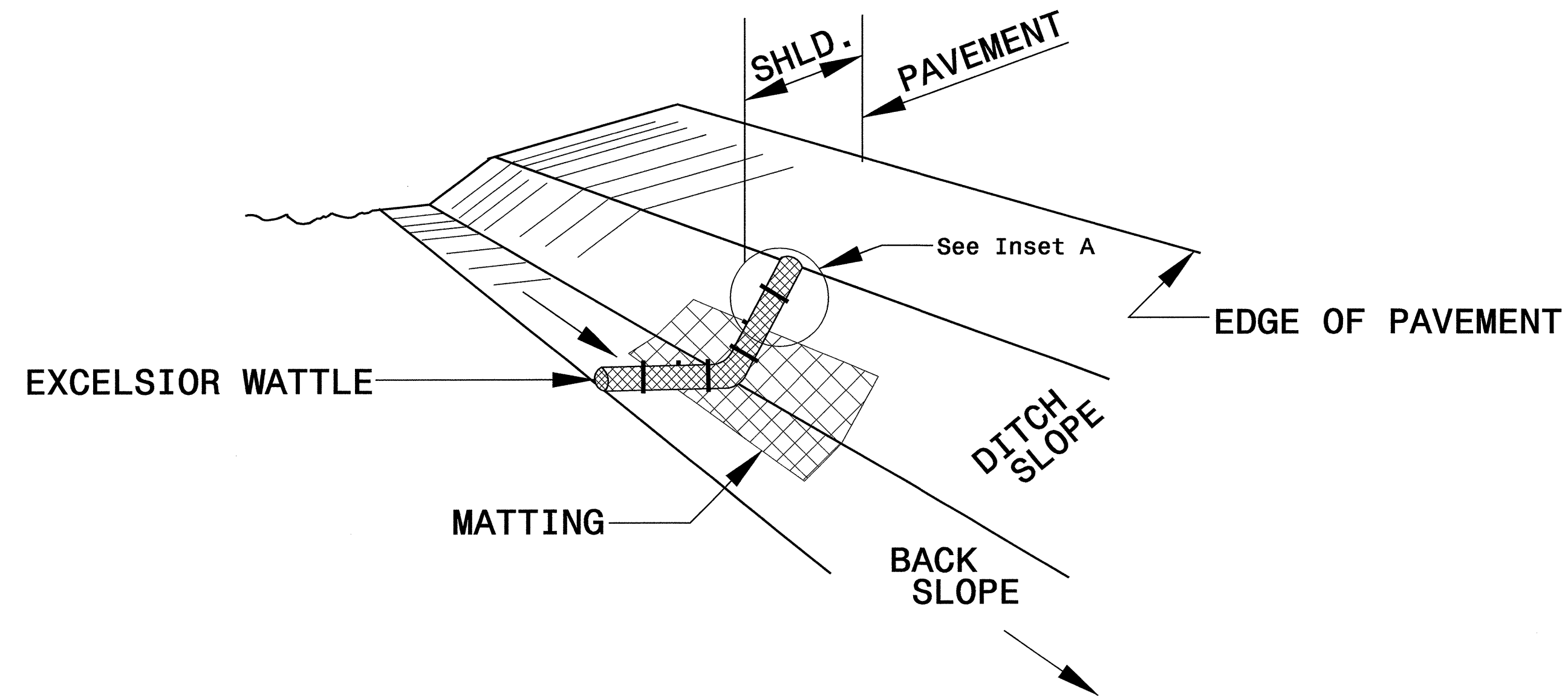
1. SEED AND PLACE MATTING FOR EROSION CONTROL ON SIDESLOPES.
2. LIMIT EARTH DIKE HEIGHT TO 5 FT.



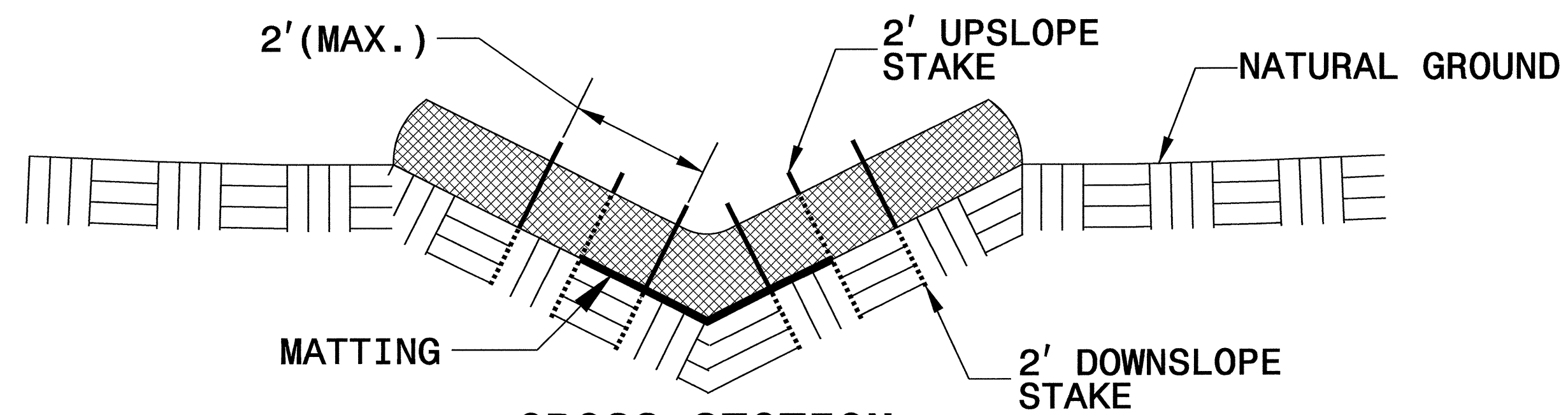
COIR FIBER MAT ANCHOR OPTIONS

PROJECT REFERENCE NO. B-4322	SHEET NO. EC-2C
R/W SHEET NO.	
ROADWAY DESIGN ENGINEER	HYDRAULICS ENGINEER

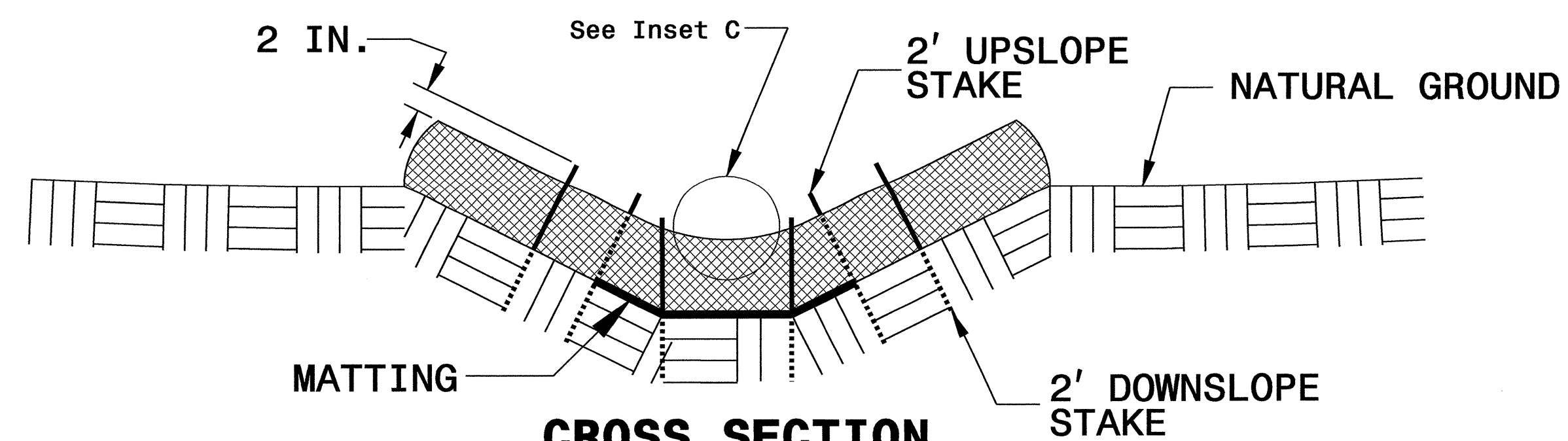
WATTLE WITH POLYACRYLAMIDE DETAIL



ISOMETRIC VIEW



**CROSS SECTION
VEE DITCH**



**CROSS SECTION
TRAPEZOIDAL DITCH**

NOTES:

USE MINIMUM 12 IN. DIAMETER EXCELSIOR WATTLE.

USE 2 FT. WOODEN STAKES WITH A 2 IN. BY 2 IN. CROSS SECTION.

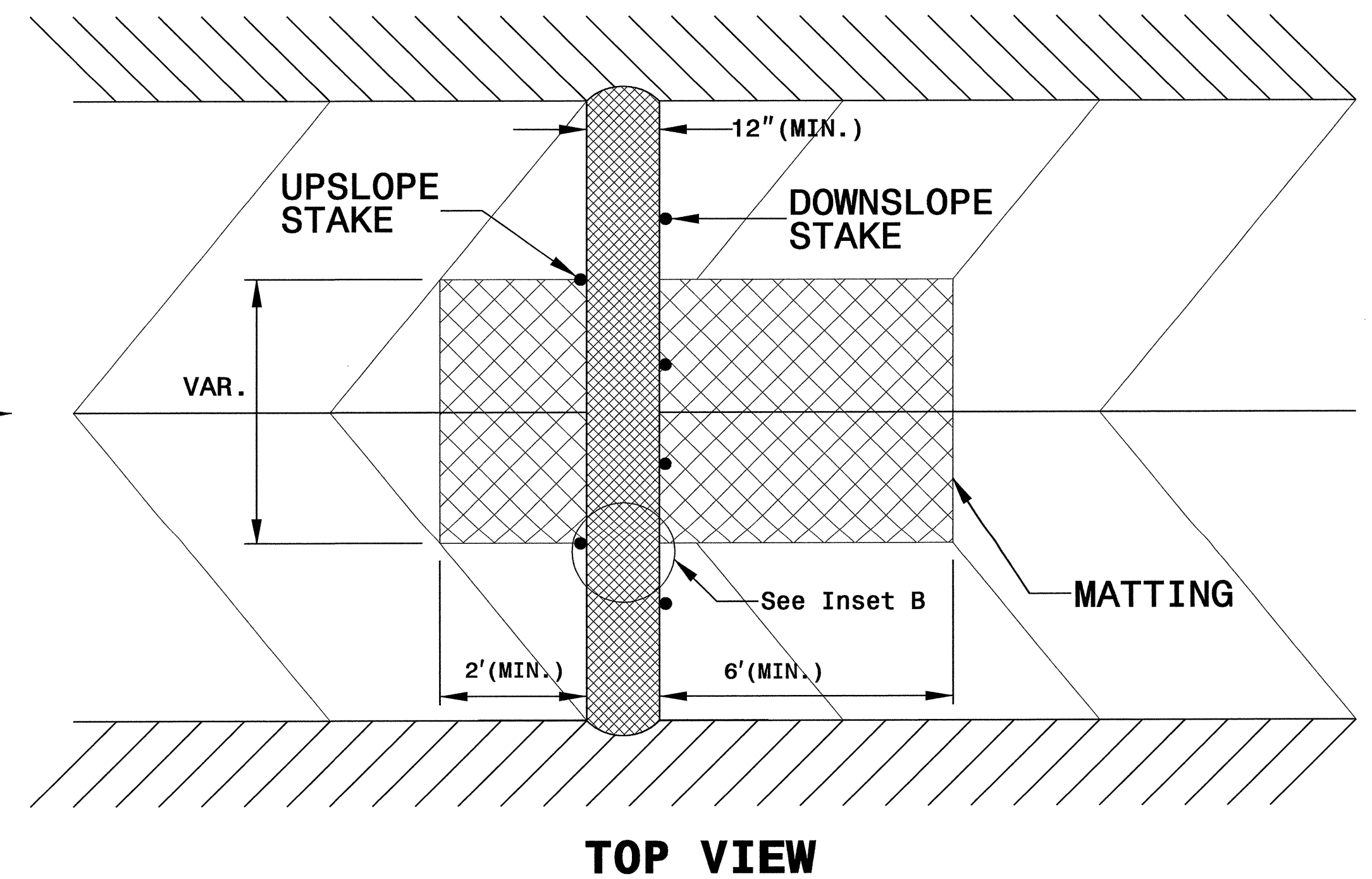
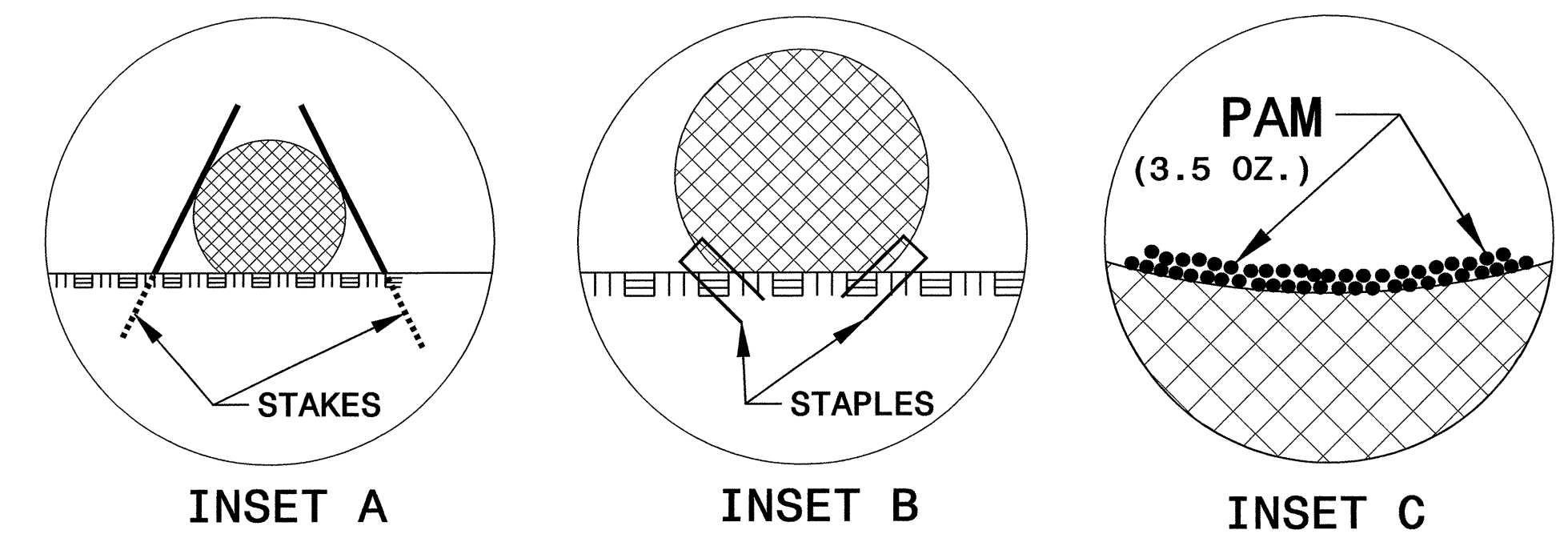
INSTALL A MINIMUM OF 2 UPSLOPE STAKES AND 4 DOWNSLOPE STAKES AT AN ANGLE TO WEDGE WATTLE TO BOTTOM OF DITCH.

PROVIDE STAPLES MADE OF 0.125 IN. DIAMETER STEEL WIRE FORMED INTO A U SHAPE NOT LESS THAN 12" IN LENGTH.

INSTALL STAPLES APPROXIMATELY EVERY 1 LINEAR FOOT ON BOTH SIDES OF WATTLE AND AT EACH END TO SECURE IT TO THE SOIL.

INSTALL MATTING IN ACCORDANCE WITH SECTION 1631 OF THE STANDARD SPECIFICATIONS.

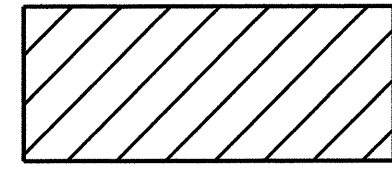
INITIALLY APPLY 3.5 OUNCES OF ANIONIC OR NEUTRALLY CHARGED POLYACRYLAMIDE (PAM) OVER WATTLE WHERE WATER WILL FLOW AND AFTER EVERY RAINFALL EVENT THAT IS EQUAL TO OR EXCEEDS 0.25 IN.



TOP VIEW

CLEARING AND GRUBBING
EROSION CONTROL FOR
CONSTRUCTION SHEET 04

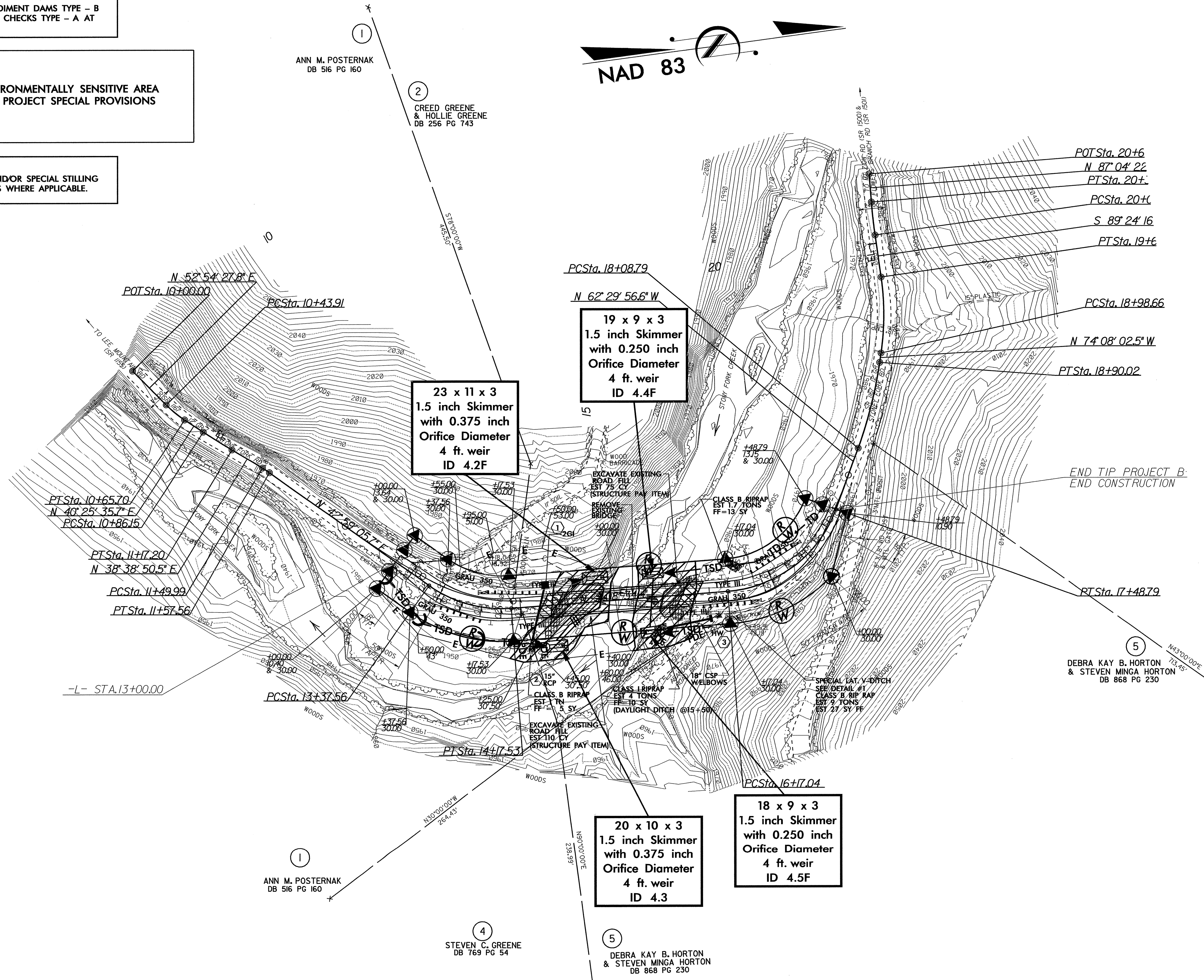
NOTE:
PLACE TEMPORARY ROCK SEDIMENT DAMS TYPE - B
AND TEMPORARY ROCK SILT CHECKS TYPE - A AT
DRAINAGE OUTLETS.



ENVIRONMENTALLY SENSITIVE AREA
SEE PROJECT SPECIAL PROVISIONS

NOTE:
UTILIZE SKIMMER BASINS AND/OR SPECIAL STILLING
BASINS AS STILLING BASINS WHERE APPLICABLE.

PROJECT REFERENCE NO.	SHEET NO.
B-4322	EC-04/CONST.04
RW SHEET NO.	
ROADWAY DESIGN ENGINEER	HYDRAULICS ENGINEER



23 x 11 x 3
1.5 inch Skimmer
with 0.375 inch
Orifice Diameter
4 ft. weir
ID 4.2F

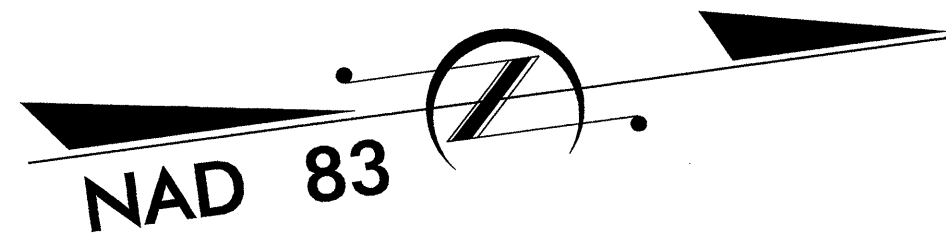
19 x 9 x 3
1.5 inch Skimmer
with 0.250 inch
Orifice Diameter
4 ft. weir
ID 4.4F

20 x 10 x 3
1.5 inch Skimmer
with 0.375 inch
Orifice Diameter
4 ft. weir
ID 4.3

18 x 9 x 3
1.5 inch Skimmer
with 0.250 inch
Orifice Diameter
4 ft. weir
ID 4.5F

1 ANN M. POSTERNAK
DB 516 PG 160

2 CREED GREENE
& HOLLIE GREENE
DB 256 PG 743



END TIP PROJECT B.
END CONSTRUCTION

5 DEBRA KAY B. HORTON
& STEVEN MINGA HORTON
DB 868 PG 230

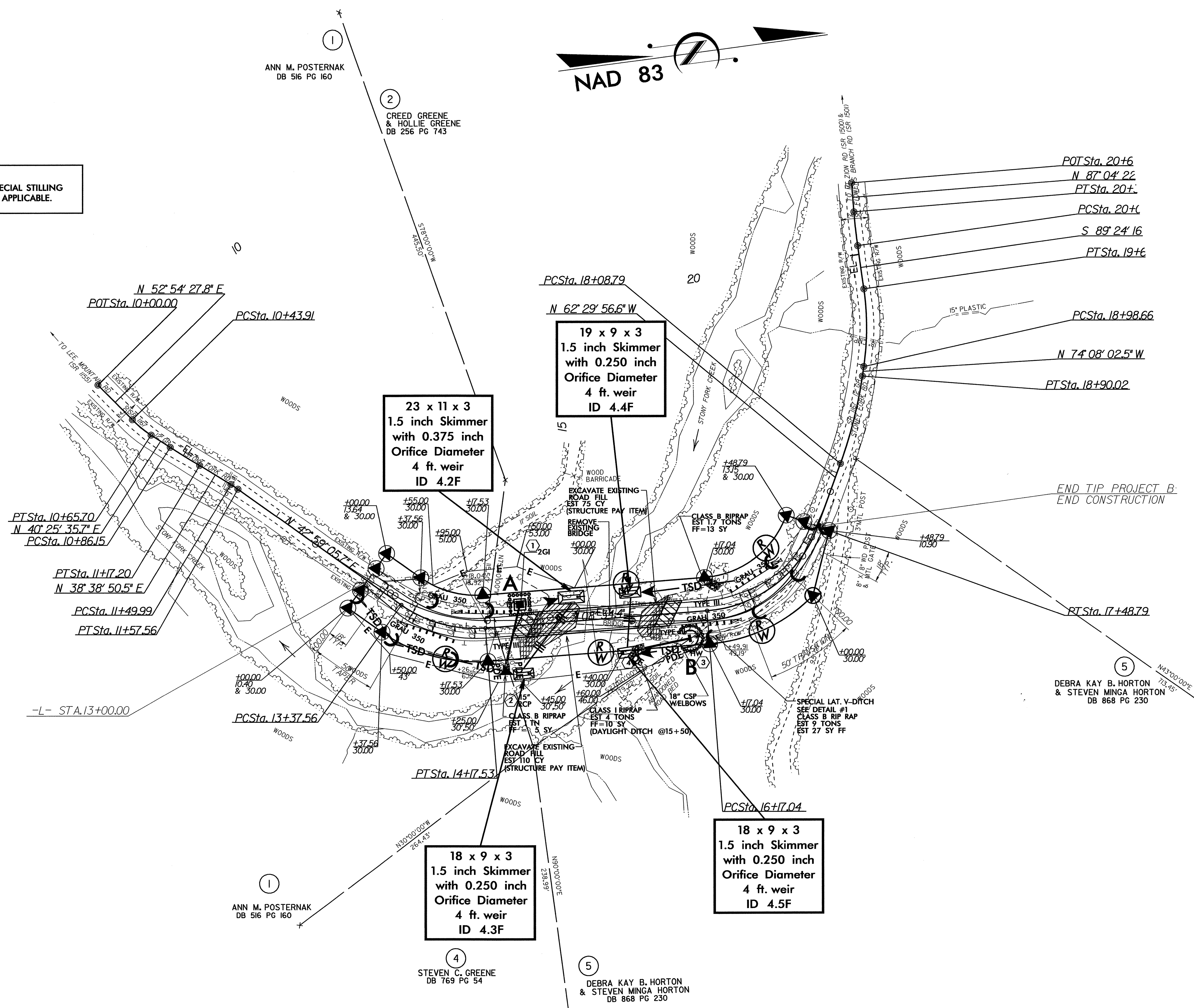
1 ANN M. POSTERNAK
DB 516 PG 160

4 STEVEN C. GREENE
DB 769 PG 54

5 DEBRA KAY B. HORTON
& STEVEN MINGA HORTON
DB 868 PG 230

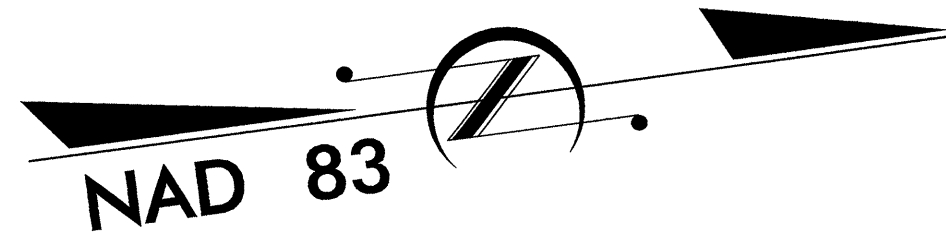
PROJECT REFERENCE NO.	SHEET NO.
B-4322	EC-05/CONST.04
RW SHEET NO.	
ROADWAY DESIGN ENGINEER	HYDRAULICS ENGINEER

NOTE:
UTILIZE SKIMMER BASINS AND/OR SPECIAL STILLING BASINS AS STILLING BASINS WHERE APPLICABLE.



1
ANN M. POSTERNAK
DB 516 PG 160

2
CREED GREENE
& HOLLIE GREENE
DB 256 PG 743



POTSta. 20+6
N 87° 04' 22"
PTSta. 20+
PCSta. 20+
S 89° 24' 16"
PTSta. 19+
PCSta. 18+98.66
N 74° 08' 02.5" W
PTSta. 18+90.02

23 x 11 x 3
1.5 inch Skimmer
with 0.375 inch
Orifice Diameter
4 ft. weir
ID 4.2F

19 x 9 x 3
1.5 inch Skimmer
with 0.250 inch
Orifice Diameter
4 ft. weir
ID 4.4F

18 x 9 x 3
1.5 inch Skimmer
with 0.250 inch
Orifice Diameter
4 ft. weir
ID 4.3F

18 x 9 x 3
1.5 inch Skimmer
with 0.250 inch
Orifice Diameter
4 ft. weir
ID 4.5F

END TIP PROJECT B
END CONSTRUCTION

5
DEBRA KAY B. HORTON
& STEVEN MINGA HORTON
DB 868 PG 230

1
ANN M. POSTERNAK
DB 516 PG 160

4
STEVEN C. GREENE
DB 769 PG 54

5
DEBRA KAY B. HORTON
& STEVEN MINGA HORTON
DB 868 PG 230