

UTILITIES BY OTHERS

NOTE:
ALL PROPOSED UTILITY WORK SHOWN ON THIS SHEET WILL BE DONE BY OTHERS

BEGIN TIP PROJECT B-4525
Sta. 11+80.00 -L-

TELEPHONE BELONGS TO EMBARQ

NAD 8395

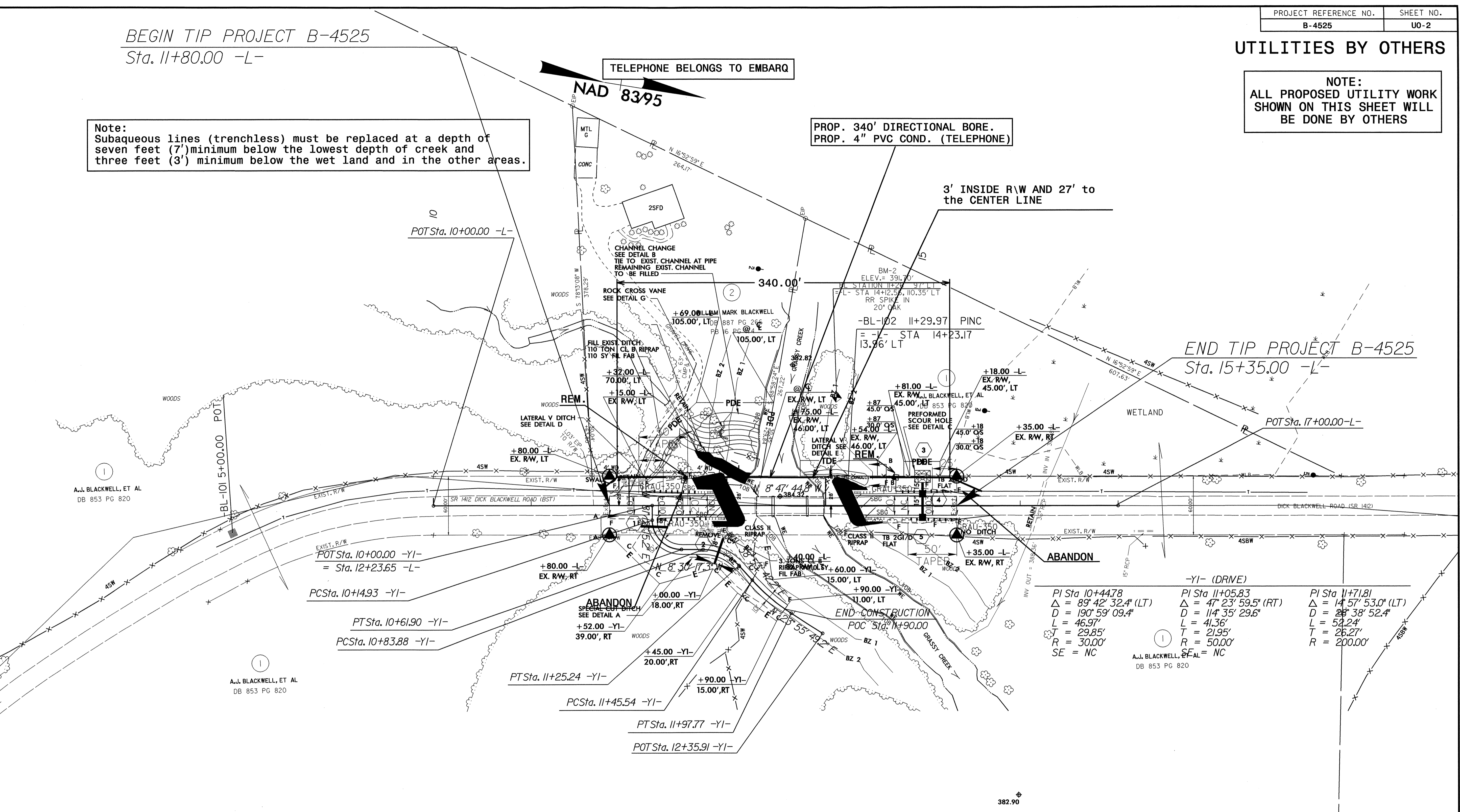
Note:
Subaqueous lines (trenchless) must be replaced at a depth of seven feet (7') minimum below the lowest depth of creek and three feet (3') minimum below the wet land and in the other areas.

PROP. 340' DIRECTIONAL BORE.
PROP. 4" PVC COND. (TELEPHONE)

3' INSIDE R/W AND 27' to the CENTER LINE

END TIP PROJECT B-4525
Sta. 15+35.00 -L-

REVISIONS



-YI- (DRIVE)		
PI Sta 10+44.78	PI Sta 11+05.83	PI Sta 11+71.81
$\Delta = 89^\circ 42' 32.4"$ (LT)	$\Delta = 47^\circ 23' 59.5"$ (RT)	$\Delta = 14^\circ 57' 53.0"$ (LT)
D = 190' 59' 09.4"	D = 114' 35' 29.6"	D = 28' 38' 52.4"
L = 46.97'	L = 41.36'	L = 52.24'
T = 29.85'	T = 21.95'	T = 26.27'
R = 30.00'	R = 50.00'	R = 200.00'
SE = NC	SE = NC	

Note:
The Utility company's Contractor's attention is directed to Section 1550, 102 and 107 of the Standard Specifications concerning the trenchless installation. No damage is allowed to the wetlands or stream by the trenchless installation. The Contractor's Engineer shall design the installation method and provide on-site oversight.

5/14/99
A.J. BLACKWELL, ET AL DB 853 PG 820
A.J. BLACKWELL, ET AL DB 853 PG 820
28-JUL-2008 10:41
U:\Utilities\Tech\UJ\Proj\B4525_uB02.rdy_psh04.dgn

N 82°22'59" E
735.24'