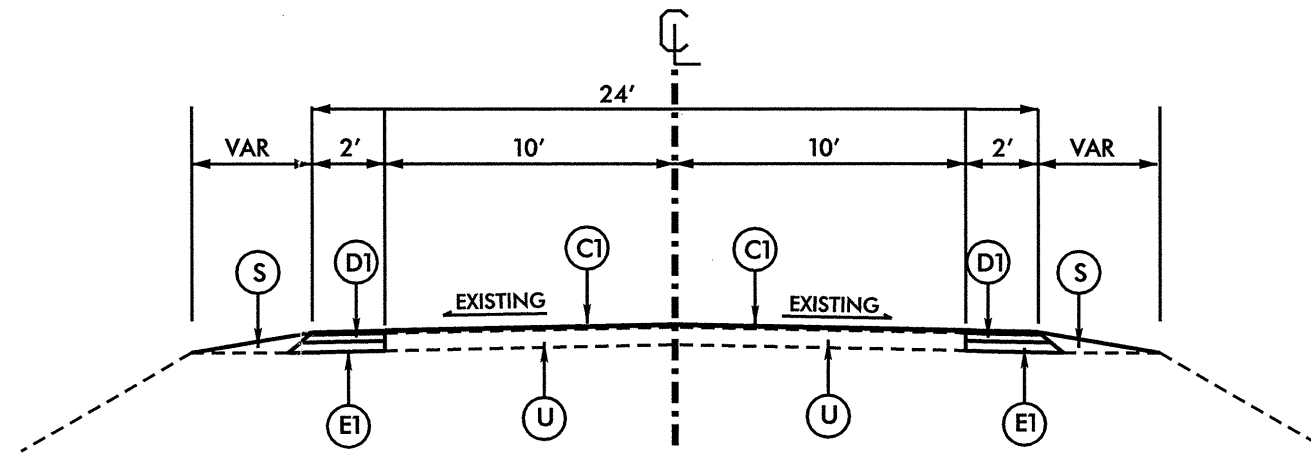


WBS 2CR 10251.8
 WIDEN AND RESURFACE NC 55 IN CRAVEN COUNTY FROM
 0.3 MILES EAST OF SR 1475 TO SR 1480.

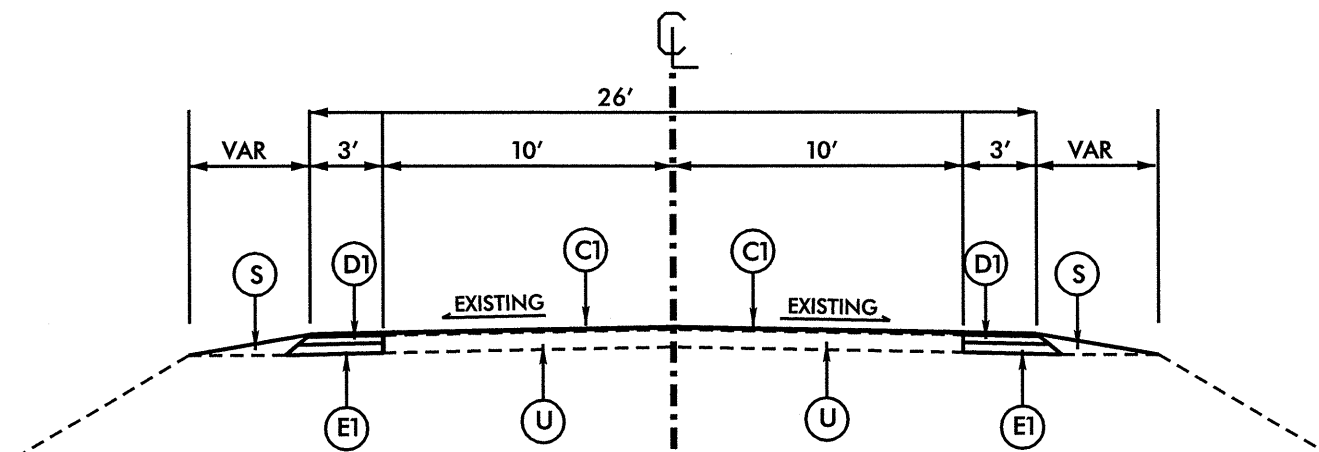
10/26/98

PROJECT REFERENCE NO. 2CR10251.8	SHEET NO. 2
ROADWAY DESIGN ENGINEER	PAVEMENT DESIGN ENGINEER

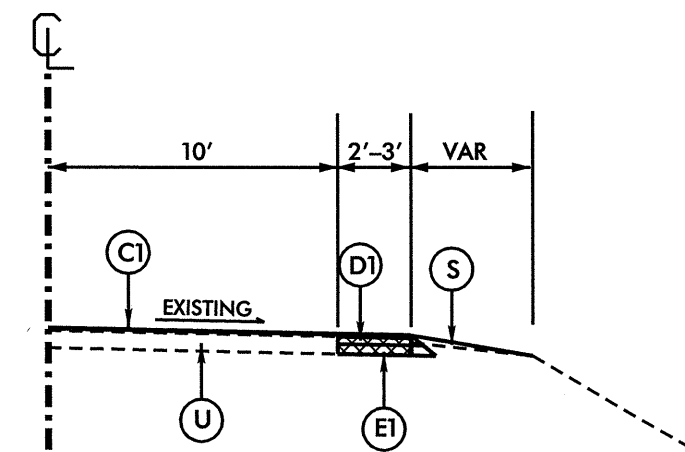
PAVEMENT SCHEDULE	
C1	PROP. APPROX. 1½" ASPHALT CONC. SURFACE COURSE, TYPE S9.5B, AT AN AVERAGE RATE OF 168 LBS. PER SQ. YD.
D1	PROP. APPROX. 3" ASPHALT CONC. INTERMEDIATE COURSE, TYPE I19.0B, AT AN AVERAGE RATE OF 342 LB. PER SQ.YD.
E1	PROP. APPROX. 5 " ASPHALT CONC. BASE COURSE, TYPE B25.0B, AT AN AVERAGE RATE OF 570 LB. PER SQ.YD.
S	SHOULDER RECONSTRUCTION
U	EXISTING PAVEMENT



USE TYPICAL SECTION #1
MAP 1



USE TYPICAL SECTION #2
MAP 2



PAVEMENT REMOVAL TYPICAL
"AT LOCATIONS AS DIRECTED BY THE ENGINEER"

EXISTING
PAVEMENT

PROJECT NO.	SHEET NO.	TOTAL NO.
2CR.10251.8	3	

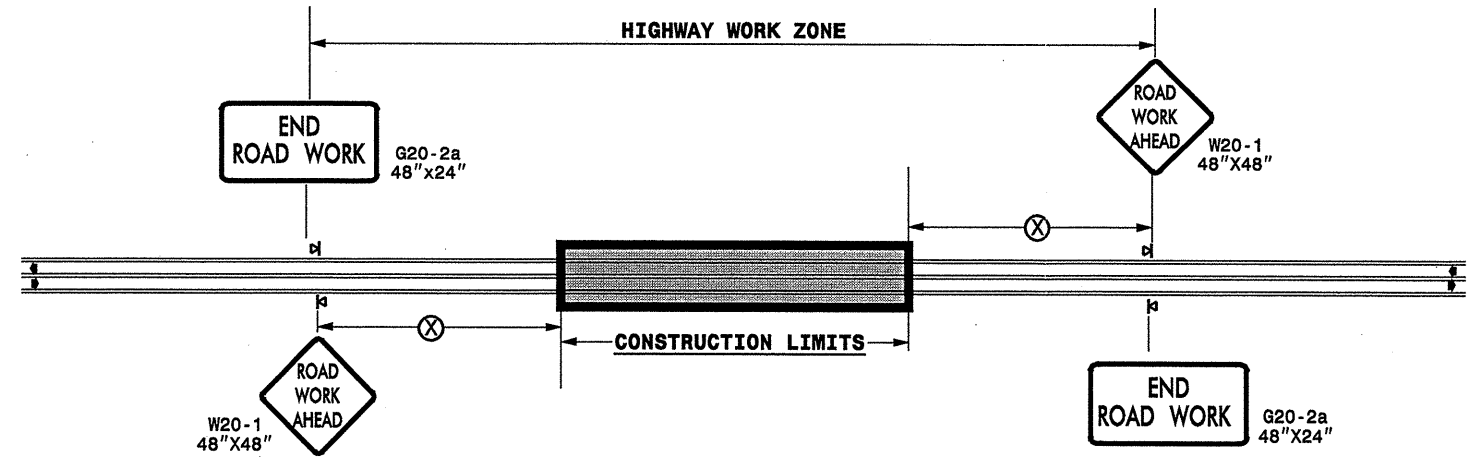
SUMMARY OF QUANTITIES

PROJECT NO	COUNTY	MAP NO	ROUTE	DESCRIPTION	TYP NO	LENGTH MI	WIDTH FT	PAVEMENT REMOVAL SY	SHOULDER RECONSTRUCTION SMI	BASE COURSE, B25.0B TONS	INTERMEDIATE COURSE, I19.0B TONS	SURFACE COURSE, S9.5B TONS	PG 64-22 PLANT MIX TONS	SEED & MULCHING AC
2CR.10251.8	Craven	1	NC 55	FROM 0.3 MILES EAST OF SR 1475 TO 1471	1	5.3	24	1000	10.6	4,305	2,486	6,931	718	13.00
		2	NC 55	FROM SR 1471 TO SR 1480	2	5.1	26	1000	10.2	6,019	3,517	7,223	857	13.00
TOTAL FOR PROJ NO. 2CR.10251.8						10.4		2000	20.8	10,324	6,003	14,154	1,575	26.00
GRAND TOTAL						10.4		2000	20.8	10,324	6,003	14,154	1,575	26.00

THERMOPLASTIC AND PAINT QUANTITIES

PROJECT NO	COUNTY	MAP NO	ROUTE	DESCRIPTION	4685000000-E	4686000000-E	4710000000-E
					4" X 90 M WHITE THERMO LF	4" X 120 M YELLOW THERMO LF	24" X 120 M WHITE THERMO LF
2CR.10251.8	Craven	1	NC 55	FROM 0.3 MILES EAST OF SR 1475 TO 1471	57,028	34,980	500
		2	NC 55	FROM SR 1471 TO SR 1480	54,876	33,660	500
TOTAL FOR PROJ NO. 2CR.10251.8					111,904	68,640	1,000
GRAND TOTAL					111,904	68,640	1,000

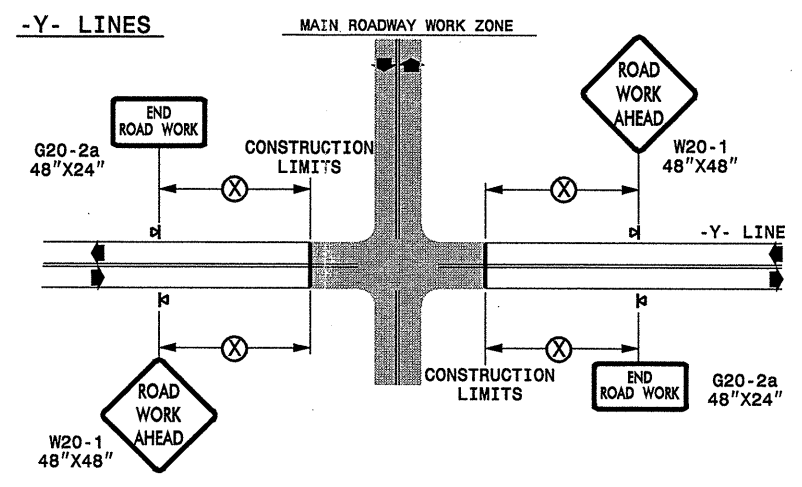
TWO-WAY UNDIVIDED ** (L-LINES)



POSTED SPEED LIMIT (M.P.H.)	RECOMMENDED MINIMUM SIGN SPACING
≤ 50	500'
≥ 55	1000'

STATE OF NORTH CAROLINA
DEPT. OF TRANSPORTATION
DIVISION OF HIGHWAYS
RALEIGH, N.C.

ROADWAYS INTERSECTING ALONG 2 WAY UNDIVIDED WORK ZONE (Y-LINES)



GENERAL NOTES

- USE FLUORESCENT ORANGE SHEETING (TYPE VII OR HIGHER) ON ALL ADVANCE WORK ZONE SIGNS.
- DO NOT INSTALL ADVANCE WARNING SIGNS MORE THAN 3 DAYS PRIOR TO BEGINNING OF WORK.
- ALL SIGN SPACING DIMENSIONS ARE APPROXIMATE, FIELD ADJUST AS NECESSARY OR AS DIRECTED.
- USE PORTABLE WORK ZONE SIGNS ONLY WITH PORTABLE WORK ZONE SIGN STANDS SPECIFICALLY DESIGNED FOR ONE ANOTHER. PORTABLE WORK ZONE SIGNS MAY BE ROLL UP OR APPROVED COMPOSITE.
- PROVIDE PORTABLE WORK ZONE SIGN STANDS, PORTABLE SIGNS AND SIGN SHEETING WHICH ARE LISTED ON THE NORTH CAROLINA DEPARTMENT OF TRANSPORTATION'S APPROVED PRODUCT LIST OR ACCEPTED AS TRAFFIC QUALIFIED BY THE TRAFFIC CONTROL UNIT.
- ** TWO-WAY UNDIVIDED ADVANCE WARNING SIGN CONFIGURATION MAY BE USED ON URBAN MULTI-LANE FACILITIES WHERE CONDITIONS LIMIT THE USE OF DUAL MOUNTED SIGNS AS DETERMINED BY THE ENGINEER.

LEGEND

◀ PORTABLE SIGN

◀ DIRECTION OF TRAFFIC FLOW

**DETAIL DRAWING
FOR TWO-WAY UNDIVIDED
WORK ZONE WARNING SIGNS**

SHEET 1 OF 1

APPROVED: _____	DATE: _____	DETAIL DRAWING FOR TWO-WAY UNDIVIDED ADVANCED WORK ZONE WARNING SIGNS	SCALE: NONE DATE: _____ DWG. BY: _____ DESIGN BY: _____ REVIEWED BY: _____		REVISIONS 7-98 10/01 10-98 03/04 01/01 11/04
SEAL					

15-SEP-2008 20:24
 \\DOT\DF\SR00101\GROUPS-WZTCCC\designgroup\resurfacing\resurfacing2008\div02_c202140_2cr102518etc-craven_nc55\c202140_2cr102518etc_2wayundivurbtrwysjuly2006.dgn
 psevmore AT WZTCCC237502