

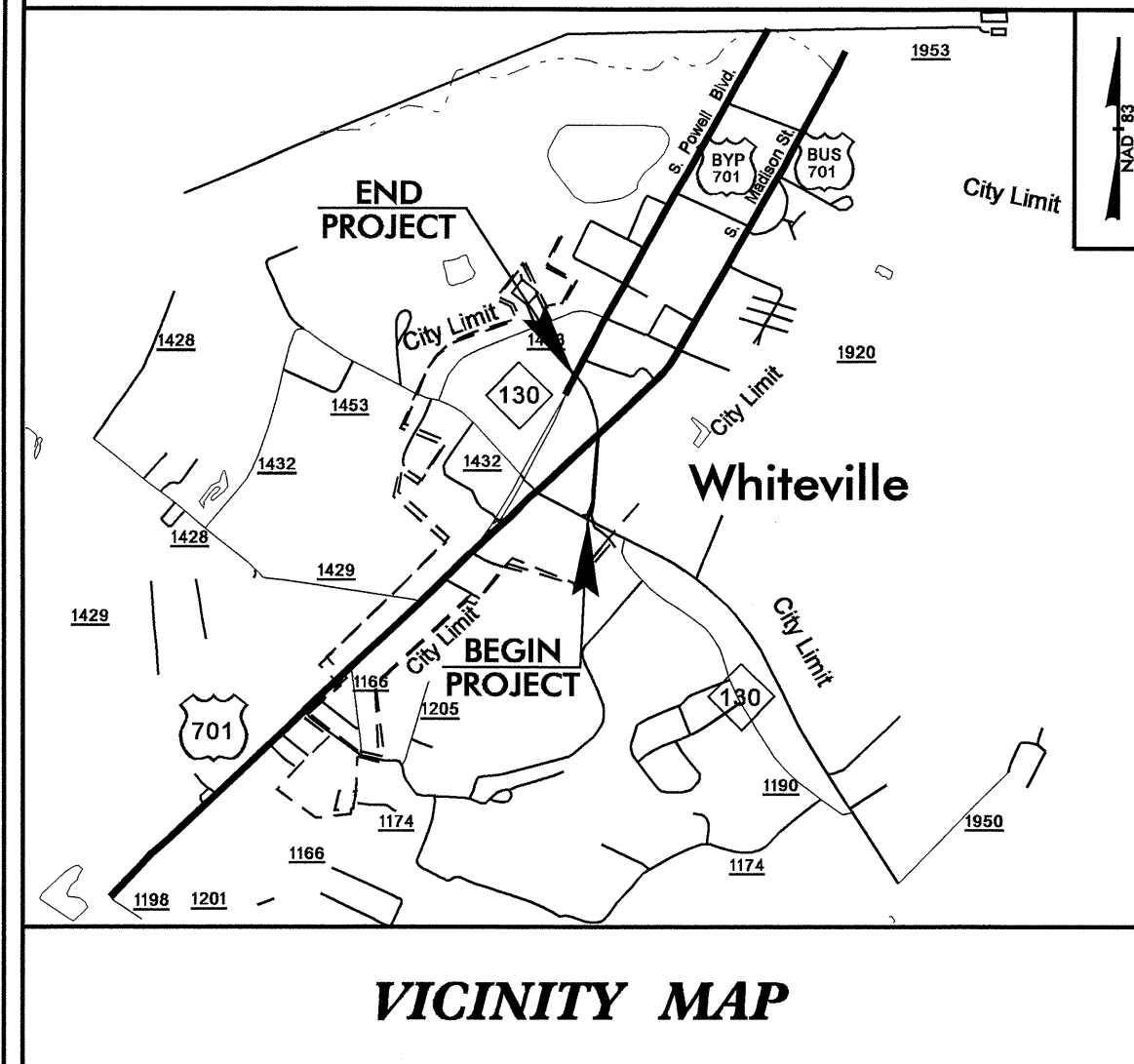
T.I.P. NO.	SHEET NO.
37972	UC-1

STATE OF NORTH CAROLINA  
DIVISION OF HIGHWAYS

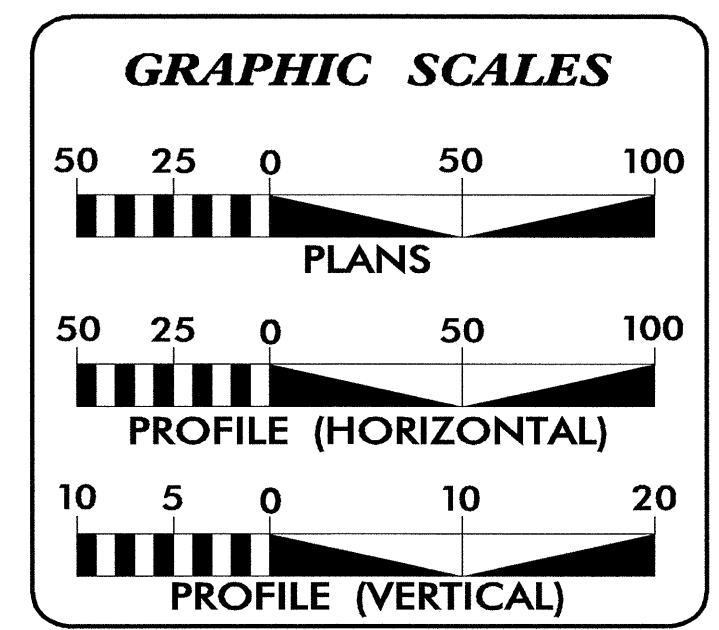
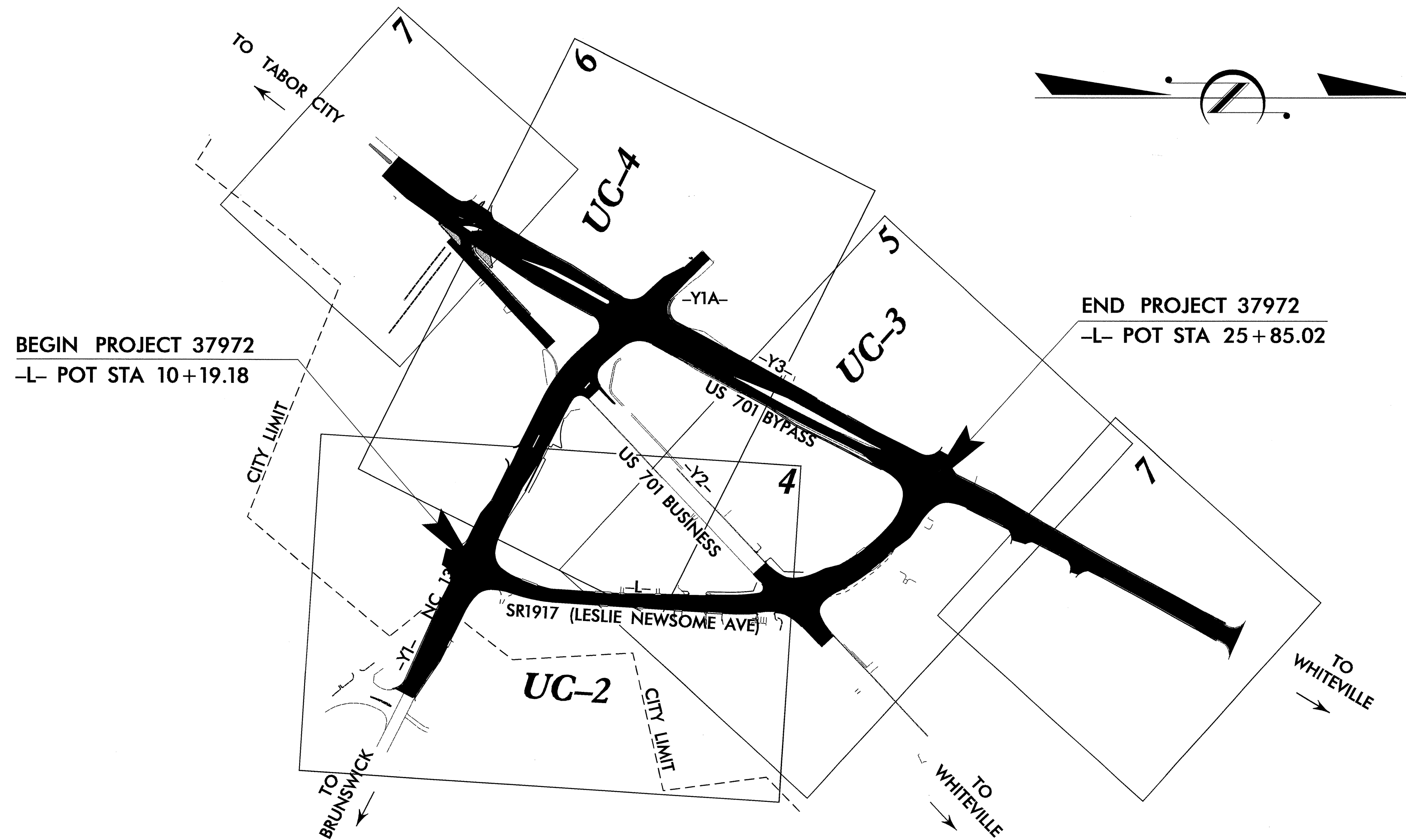
**UTILITY CONSTRUCTION PLANS  
COLUMBUS COUNTY**

**LOCATION: SR 1917 FROM NC HIGHWAY 130 TO US 701 BYPASS, NC 130 FROM JUST EAST OF SR 1917 TO US 701 BYPASS, AND US 701 BYPASS FROM SOUTH OF NC 130 TO JUST NORTH OF SR 1917 EXTENSION.**

**TYPE OF WORK: WATER AND SEWER UTILITY CONSTRUCTION**



**PROJECT: 37972**

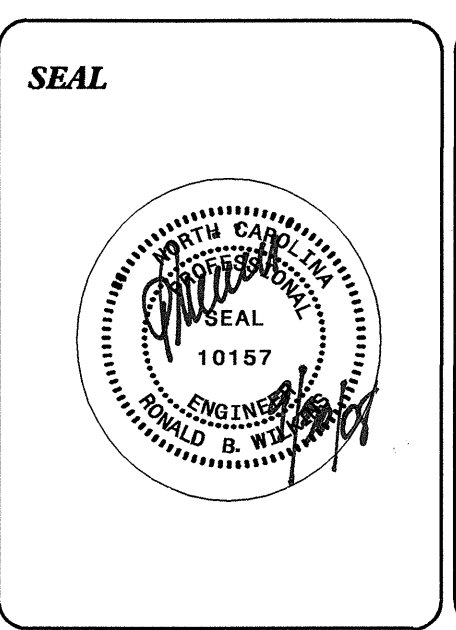


**INDEX OF SHEETS**

SHEET NO.	DESCRIPTION
UC-1	TITLE SHEET
UC-2 THRU UC-4	UTILITY CONSTRUCTION PLAN SHEETS
UC-5	DETAIL SHEET

**WATER AND SEWER OWNERS ON PROJECT**

(1) WATER - CITY OF WHITEVILLE  
(2) SANITARY SEWER - CITY OF WHITEVILLE



PREPARED IN THE OFFICE OF:  
**DIVISION OF HIGHWAYS**

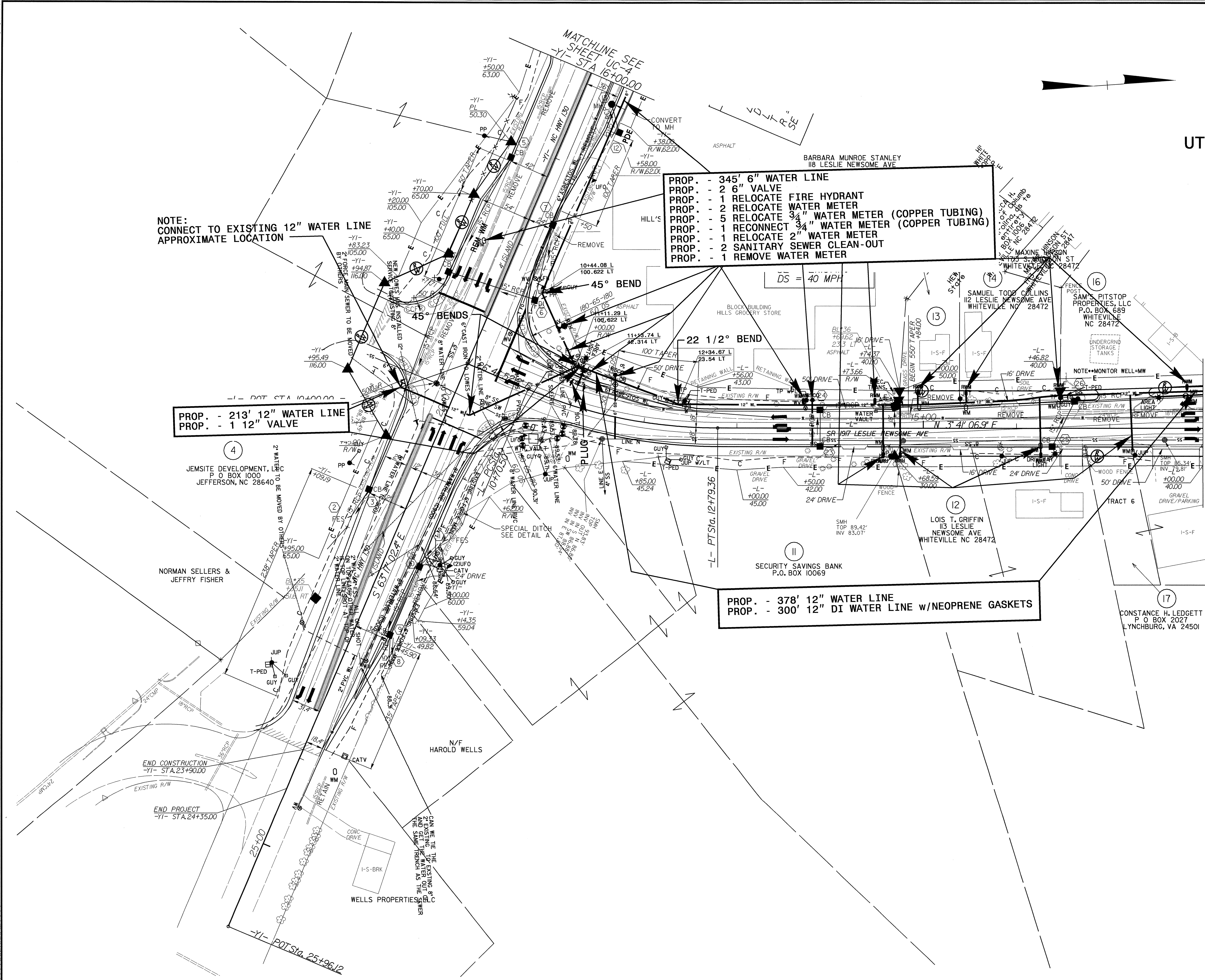
**UTILITIES ENGINEERING SECTION**

1591 MAIL SERVICES CENTER  
RALEIGH NC 27699-1591  
PHONE (919) 250-4128  
FAX (919) 250-4119

**Roger Worthington, P.E.** UTILITIES SECTION ENGINEER  
**R. B. Wilkins, P.E.** UTILITIES SQUAD LEADER PROJECT ENGINEER  
**John A. Nigro, P.E.** UTILITIES PROJECT DESIGNER

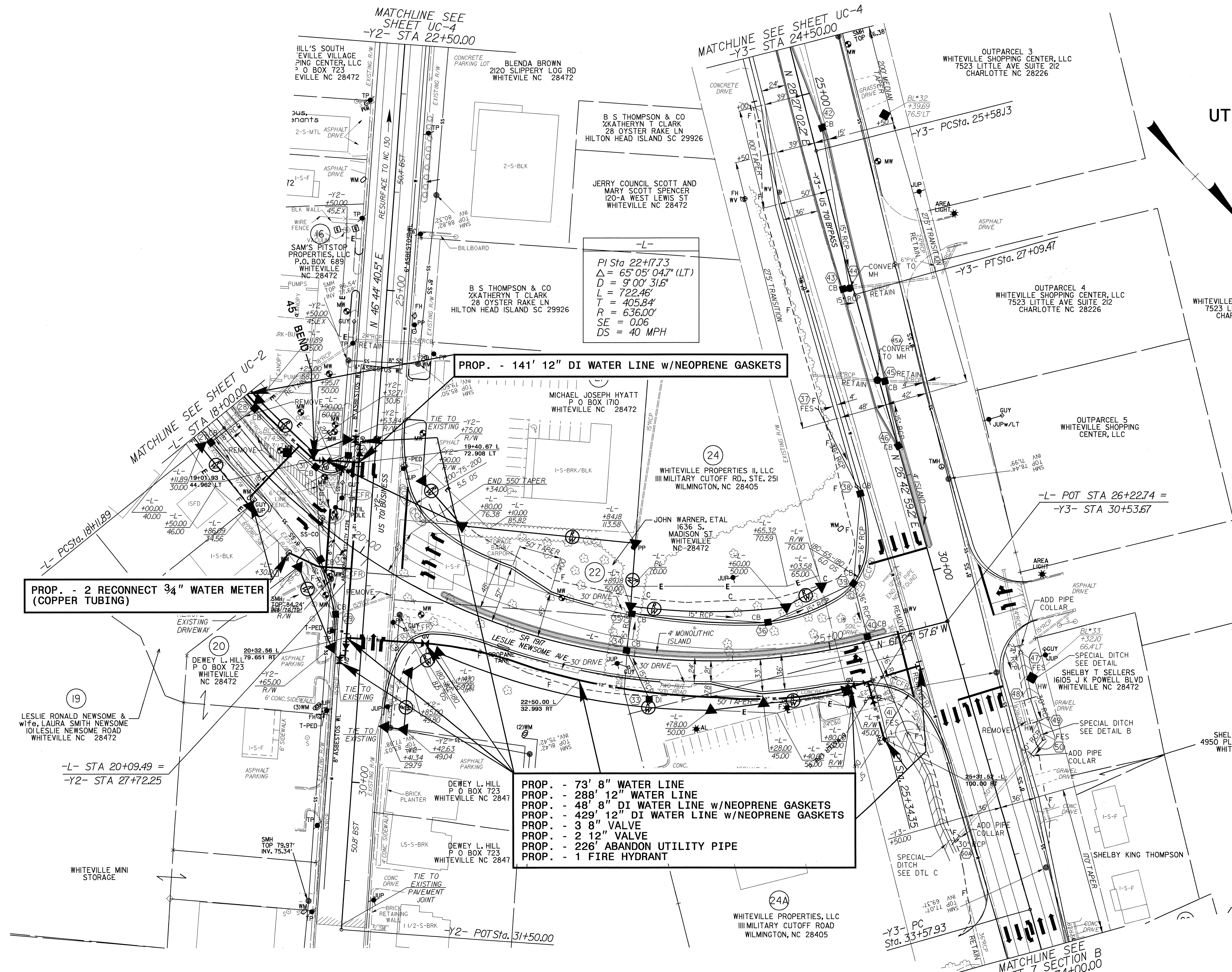
24-SEP-2008 08:36  
c:\37972\_design\37972\utilities\rdy\_ut\proj\37972\_ut\_title.ucl\_psh.dgn  
\$\$\$\$\$USERNAME\$\$\$\$\$

**UTILITY CONSTRUCTION**



5/14/09  
 Q1-OCI-2008 1519  
 J:\proj\37972\utilities\rdj\ut\proj\37972\ut\_4.uc2.psh.dgn  
 \$\$\$\$BUSINESS PLAN\$\$\$\$

# UTILITY CONSTRUCTION



PROP. - 141' 12" DI WATER LINE W/NEOPRENE GASKETS

PROP. - 2 RECONNECT 3/4" WATER METER (COPPER TUBING)

PROP. - 73' 8" WATER LINE  
 PROP. - 288' 12" WATER LINE  
 PROP. - 48' 8" DI WATER LINE W/NEOPRENE GASKETS  
 PROP. - 429' 12" DI WATER LINE W/NEOPRENE GASKETS  
 PROP. - 3' 8" VALVE  
 PROP. - 2' 12" VALVE  
 PROP. - 226' ABANDON UTILITY PIPE  
 PROP. - 1 FIRE HYDRANT

-Y3-  
 PI Sta 26+33.80  
 $\Delta = 1' 44' 03.0''$  (LT)  
 $D = 1' 08' 45.3''$   
 $L = 151.34'$   
 $T = 75.67'$   
 $R = 5,000.00'$   
 $SE = EXISTING$

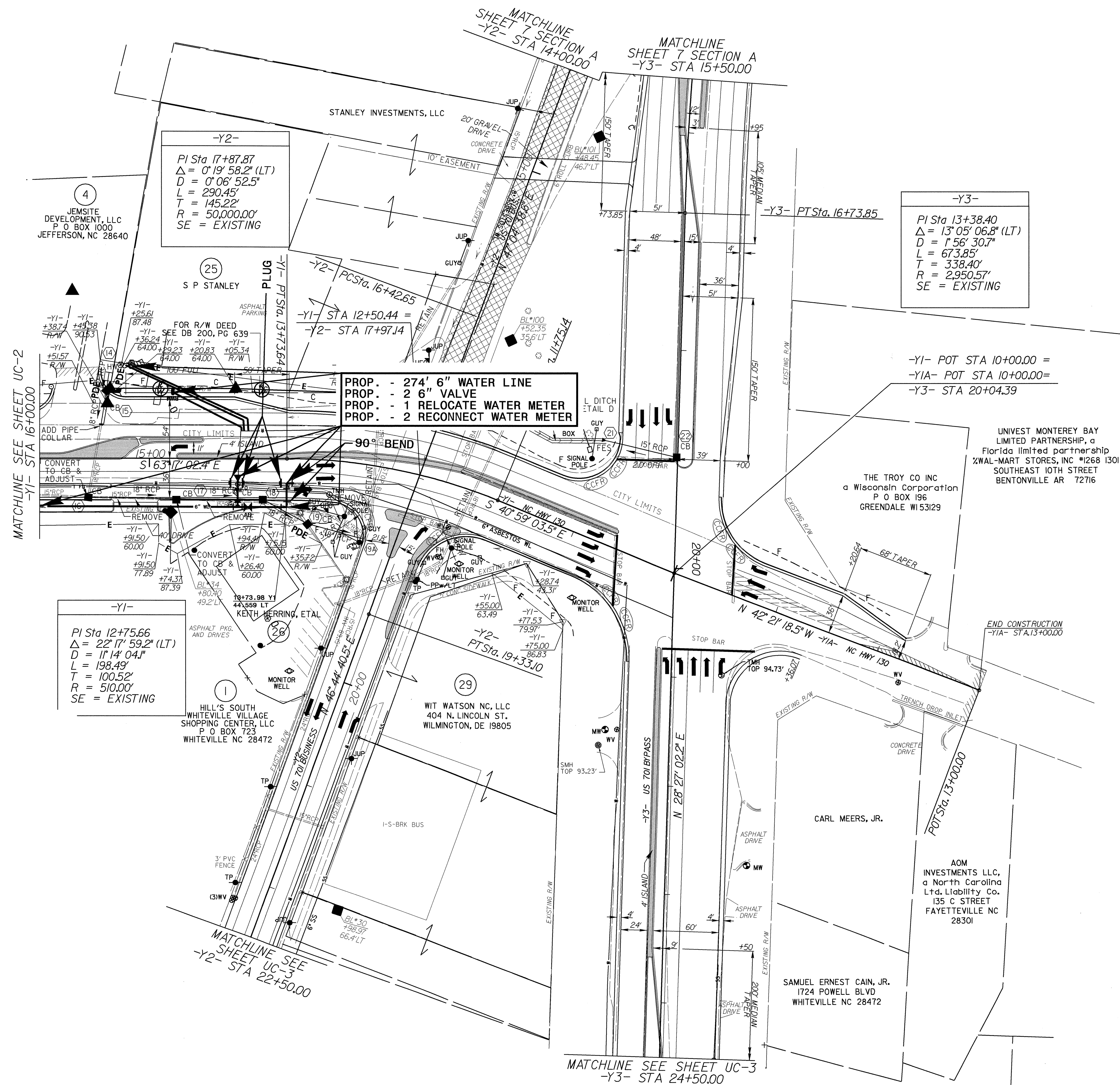
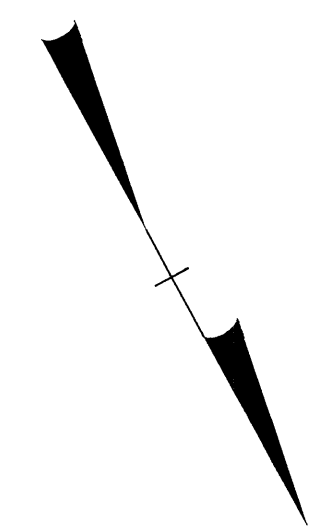
-L- POT STA 26+22.74 =  
 -Y3- STA 30+53.67

MATCHLINE SEE SHEET 7 SECTION B  
 -Y3- STA 34+00.00

5/14/99  
 30-SEP-2008 15:49  
 J:\proj\37972\utility\rdy\ut\pro\37972-ut-5-uc3-ps.h.dgn  
 USER:RBM

PROJECT REFERENCE NO.	SHEET NO.
37972	UC-4
DESIGNED BY: JAN	
DRAWN BY: JAN	
CHECKED BY: RBW	
APPROVED BY: RBW	
REVISED:	
NORTH CAROLINA DEPARTMENT OF TRANSPORTATION	
UTILITY CONSTRUCTION PLANS ONLY	

UTILITY CONSTRUCTION



-Y2-  
 PI Sta 17+87.87  
 $\Delta = 0^{\circ} 19' 58.2''$  (LT)  
 $D = 0^{\circ} 06' 52.5''$   
 $L = 290.45'$   
 $T = 145.22'$   
 $R = 50,000.00'$   
 SE = EXISTING

-Y3-  
 PI Sta 13+38.40  
 $\Delta = 13^{\circ} 05' 06.8''$  (LT)  
 $D = 1^{\circ} 56' 30.7''$   
 $L = 673.85'$   
 $T = 338.40'$   
 $R = 2,950.57'$   
 SE = EXISTING

PROP. - 274 1/2" WATER LINE  
 PROP. - 2 6" VALVE  
 PROP. - 1 RELOCATE WATER METER  
 PROP. - 2 RECONNECT WATER METER

-Y1-  
 PI Sta 12+75.66  
 $\Delta = 22^{\circ} 17' 59.2''$  (LT)  
 $D = 1^{\circ} 14' 04.1''$   
 $L = 198.49'$   
 $T = 100.52'$   
 $R = 510.00'$   
 SE = EXISTING

MATCHLINE SEE SHEET UC-2  
-Y1- STA 16+00.00

MATCHLINE SEE SHEET UC-3  
-Y2- STA 22+50.00

MATCHLINE SEE SHEET UC-3  
-Y3- STA 24+50.00

4  
 JEMSITE  
 DEVELOPMENT, LLC  
 P O BOX 1000  
 JEFFERSON, NC 28640

25  
 S P STANLEY

1  
 HILL'S SOUTH  
 WHITEVILLE VILLAGE  
 SHOPPING CENTER, LLC  
 P O BOX 723  
 WHITEVILLE NC 28472

29  
 WIT WATSON NC, LLC  
 404 N. LINCOLN ST.  
 WILMINGTON, DE 19805

THE TROY CO INC  
 a Wisconsin Corporation  
 P O BOX 196  
 GREENDALE WI 53129

UNIVEST MONTEREY BAY  
 LIMITED PARTNERSHIP, a  
 Florida limited partnership  
 WAL-MART STORES, INC #1268 1301  
 SOUTHEAST 10TH STREET  
 BENTONVILLE AR 72716

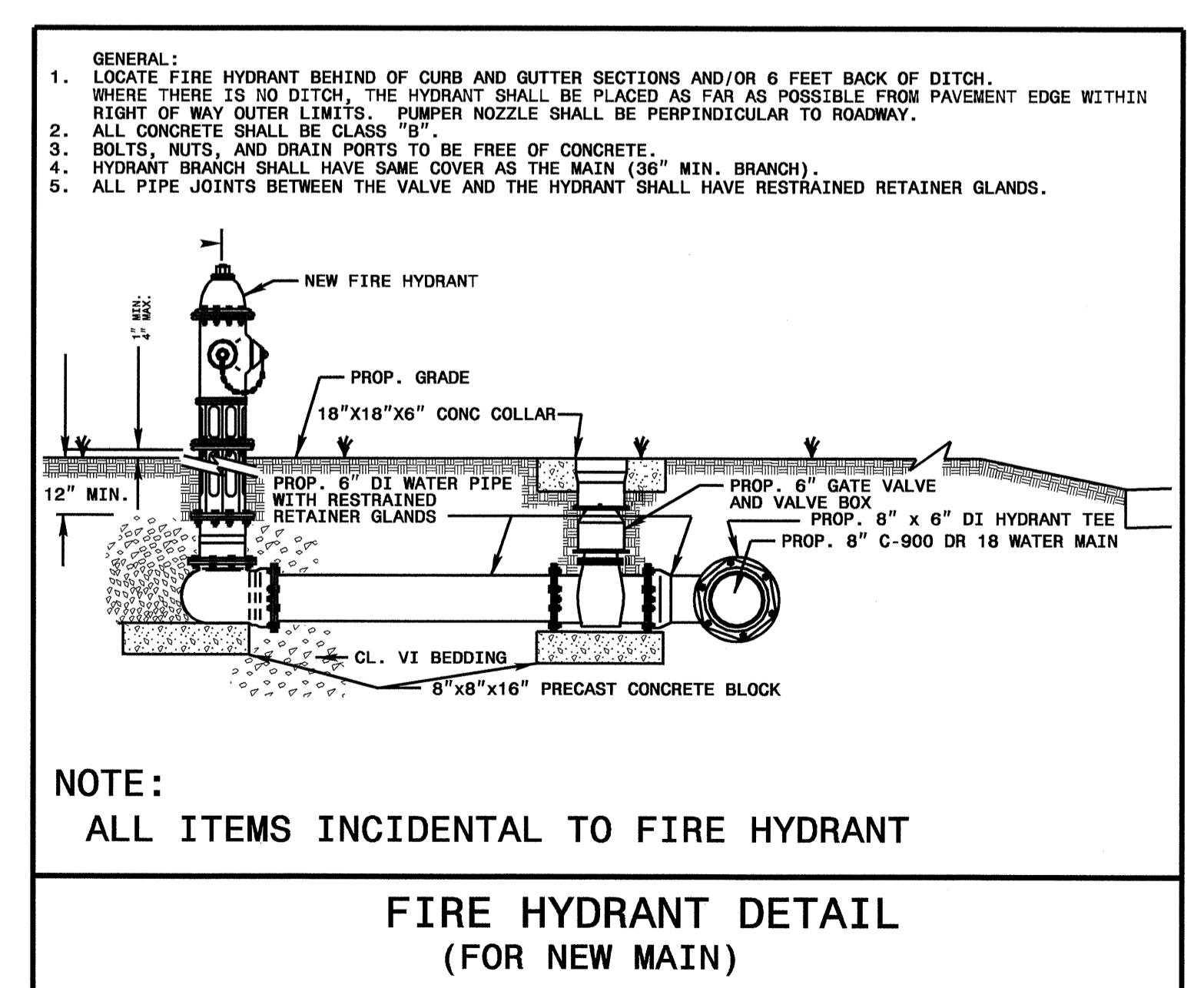
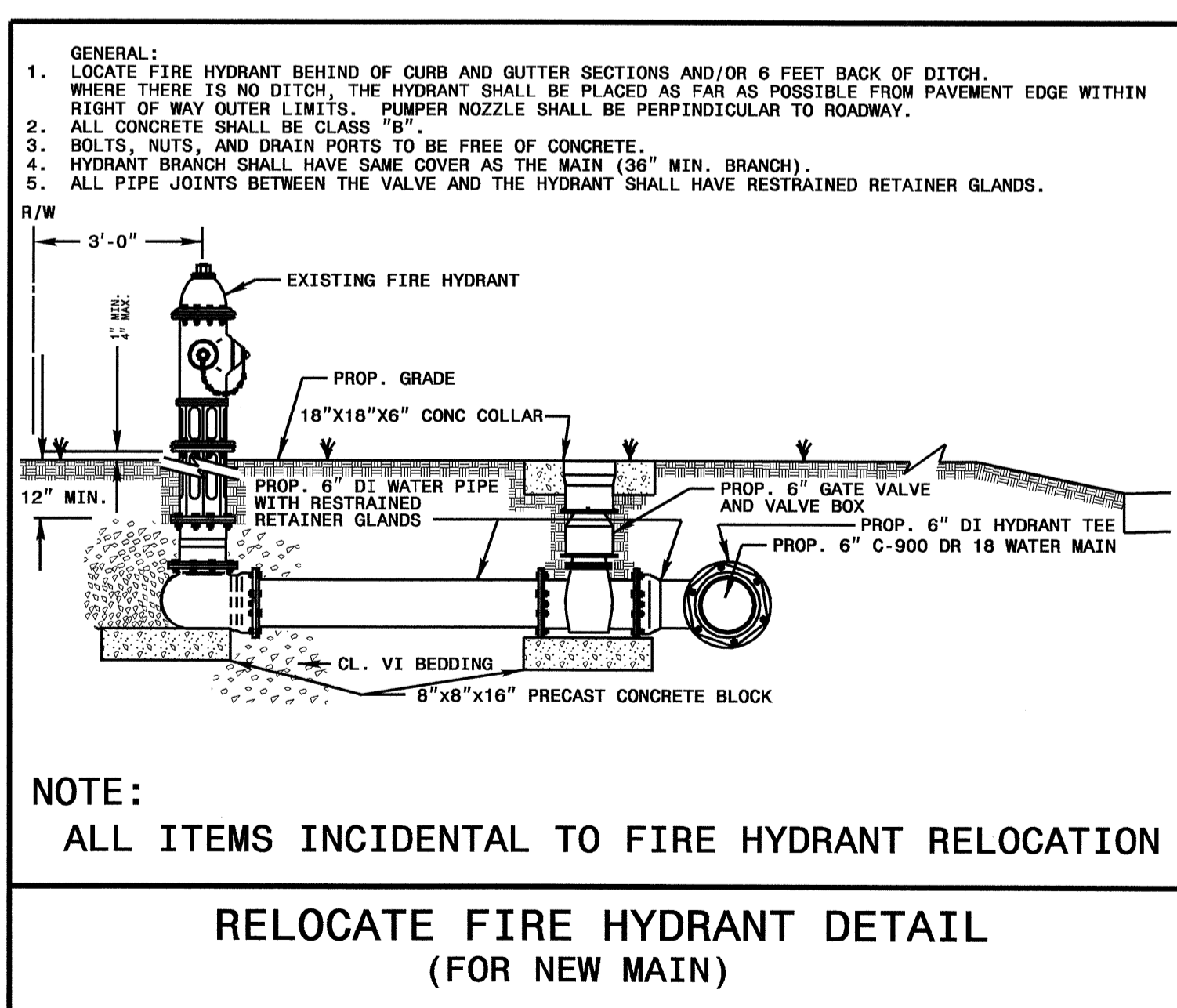
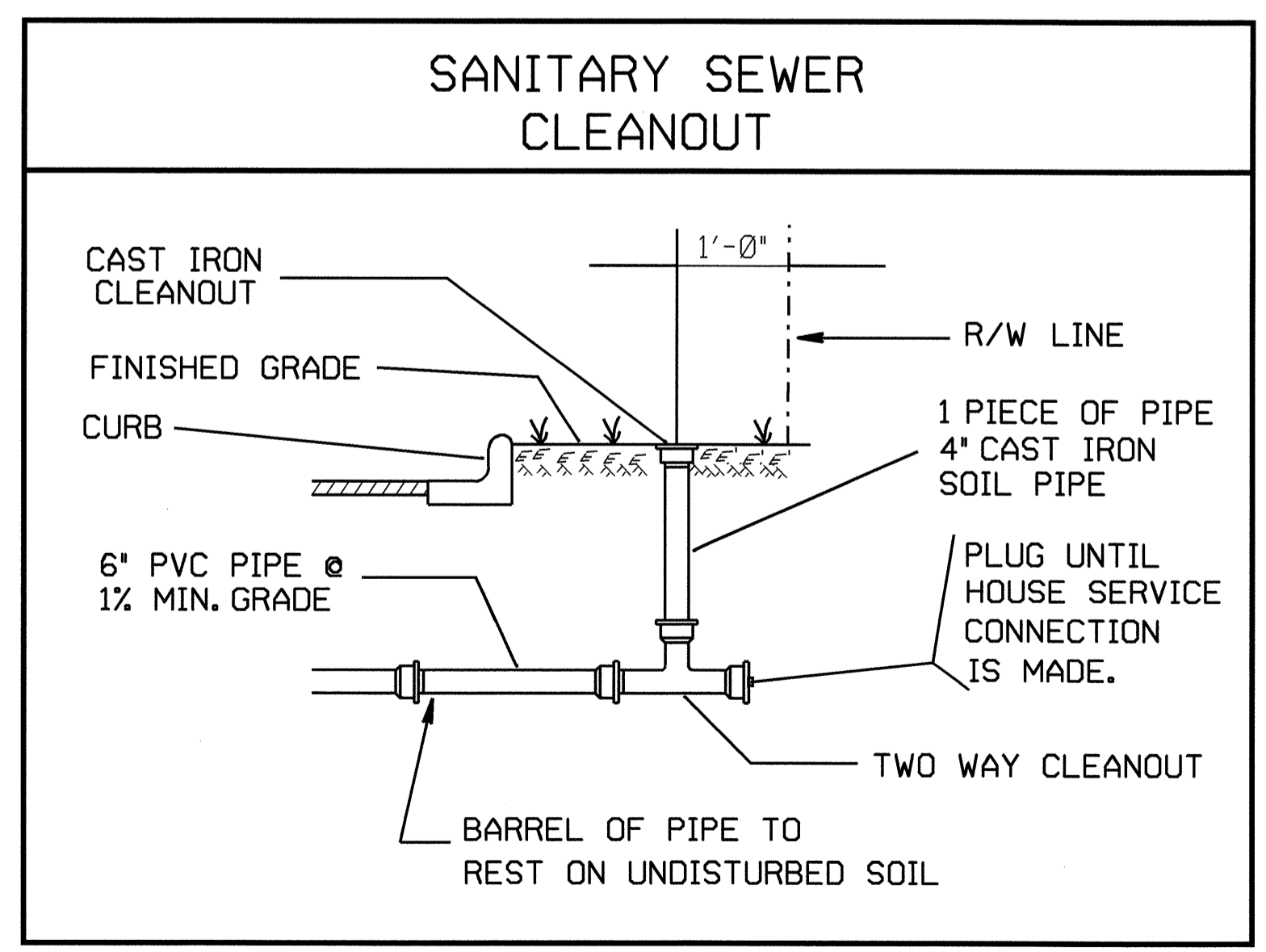
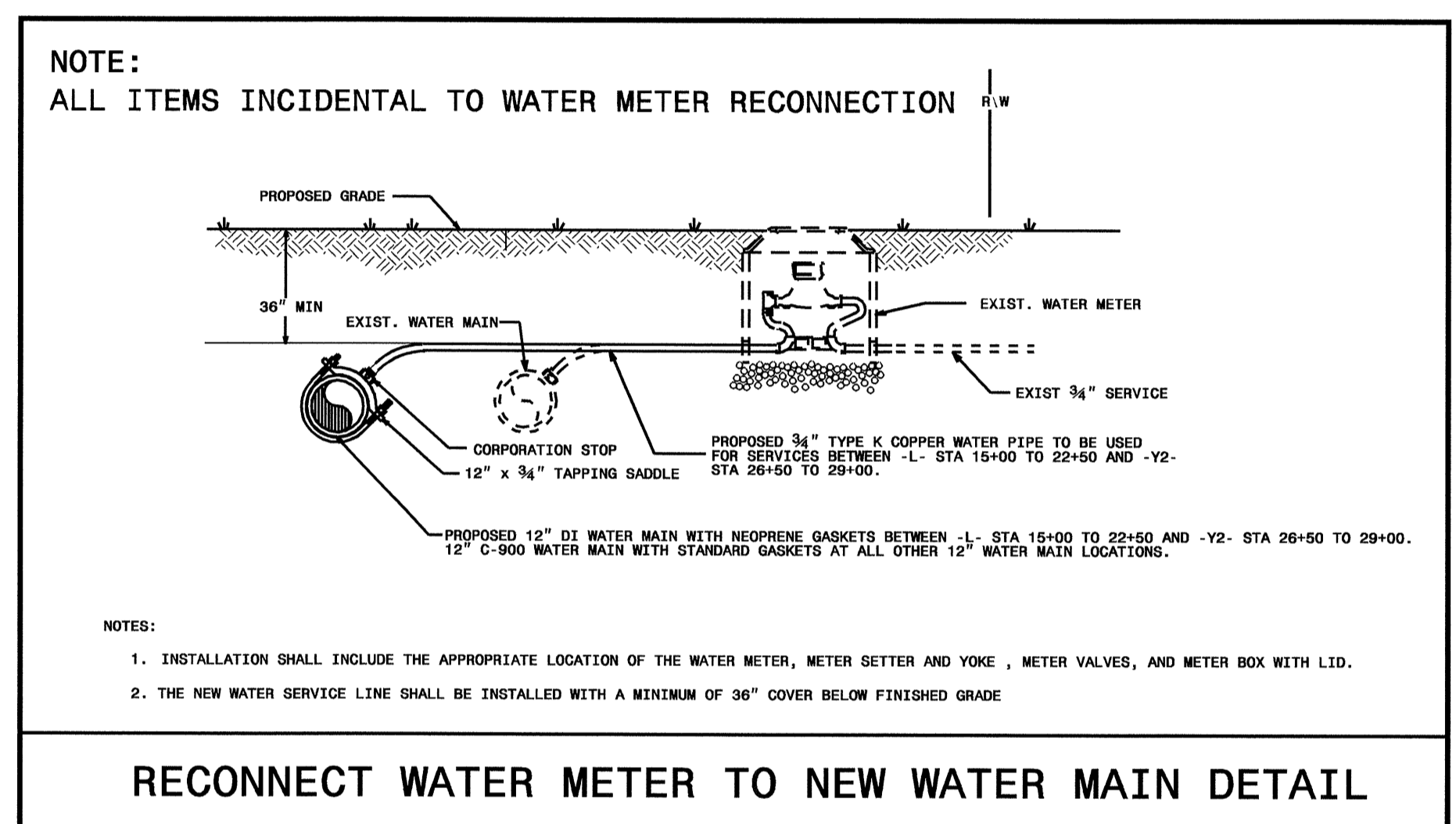
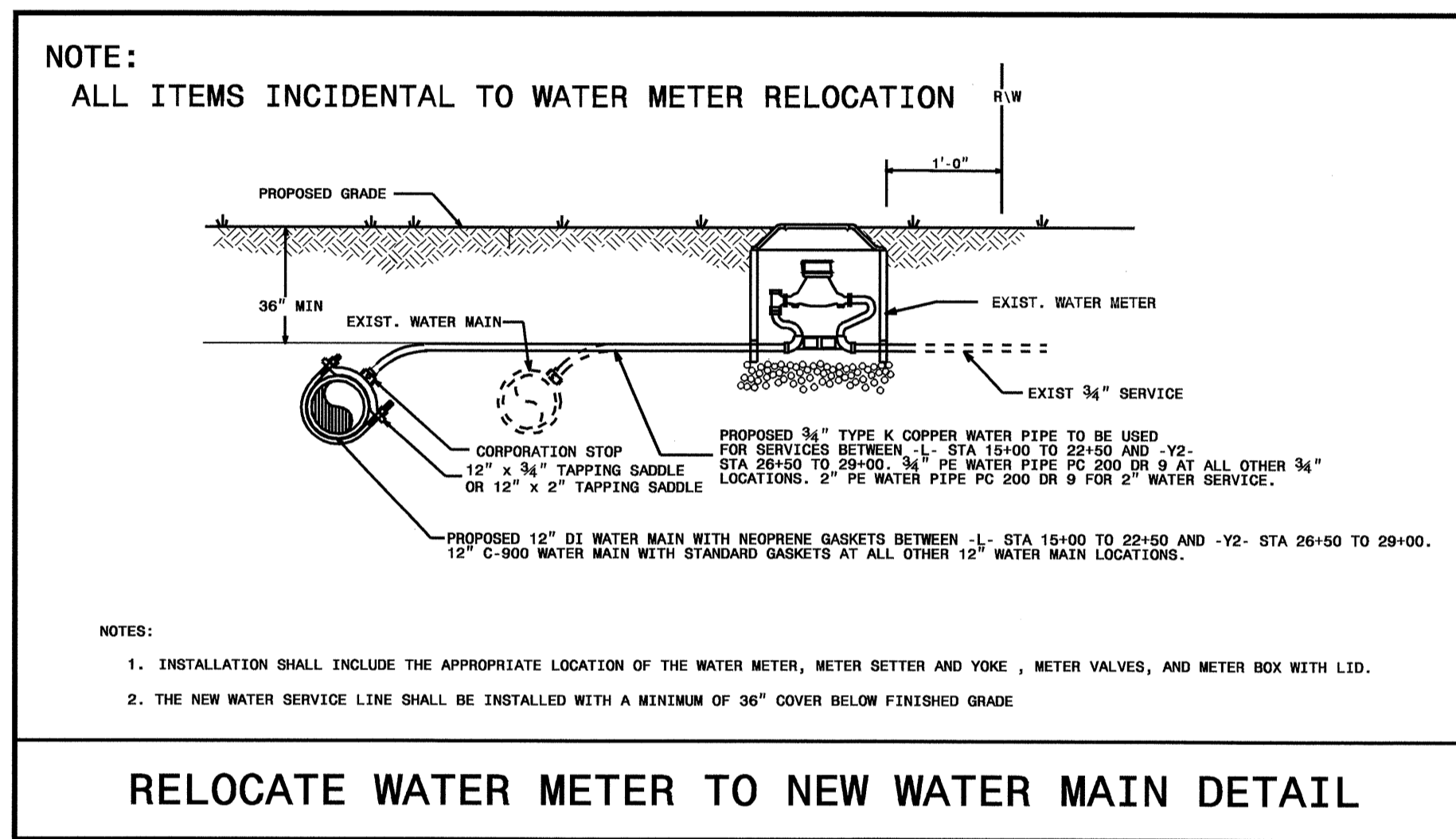
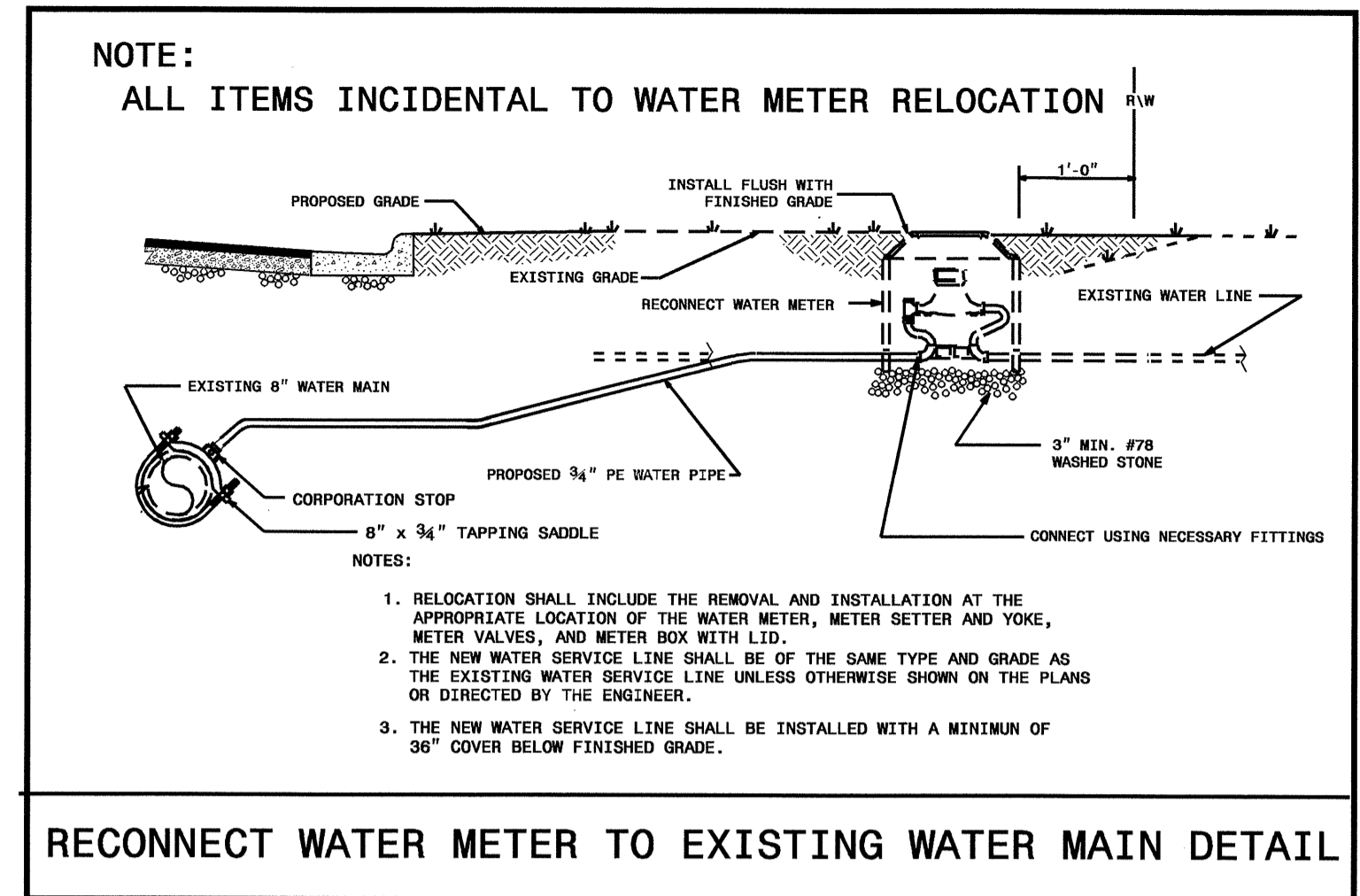
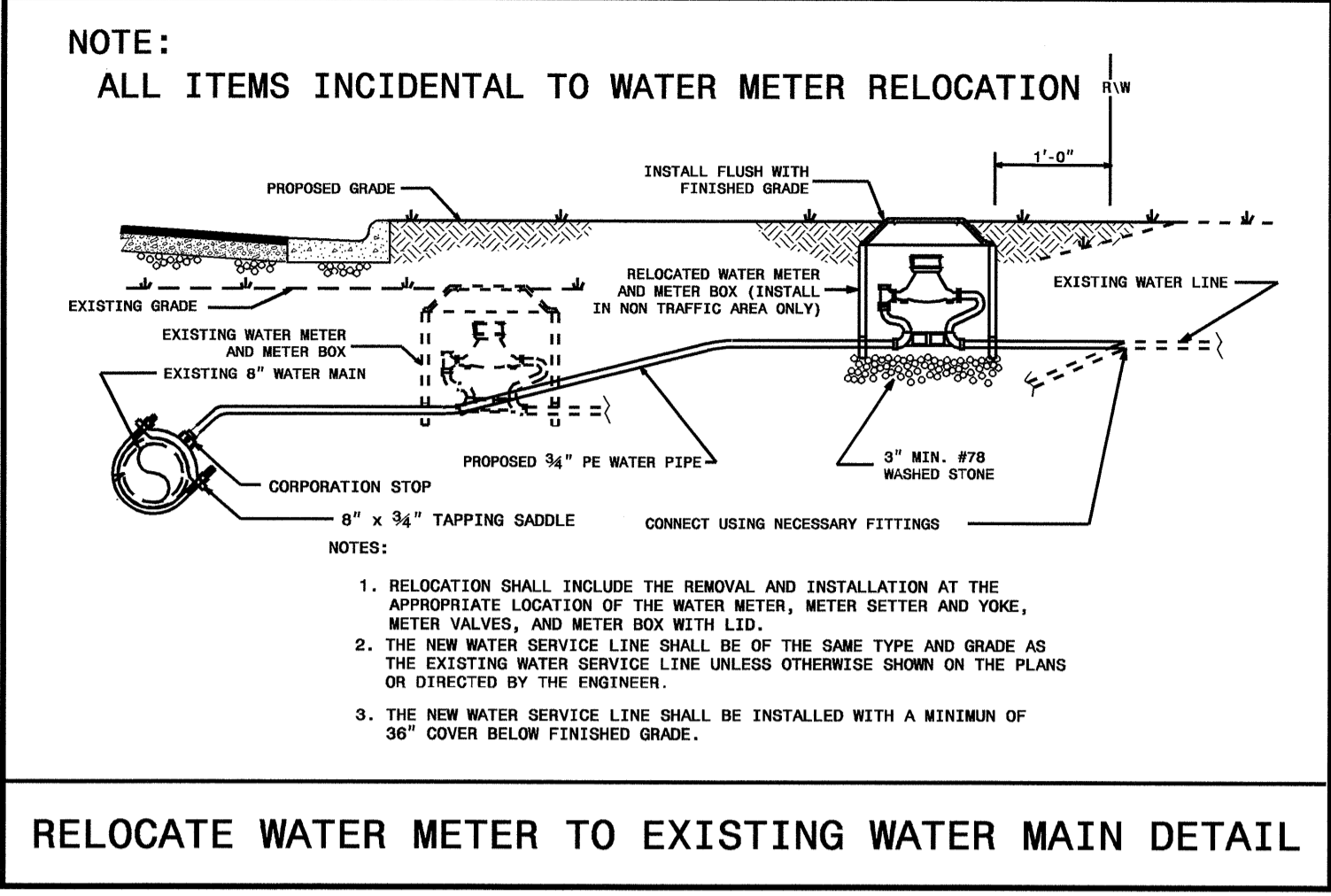
AOM  
 INVESTMENTS LLC,  
 a North Carolina  
 Ltd. Liability Co.  
 135 C STREET  
 FAYETTEVILLE NC  
 28301

SAMUEL ERNEST CAIN, JR.  
 1724 POWELL BLVD  
 WHITEVILLE NC 28472

5/14/09

24-SEP-2008 08:50  
 design\37972\proj\37972-ut.6.uc4.psh.dgn

### UTILITY CONSTRUCTION



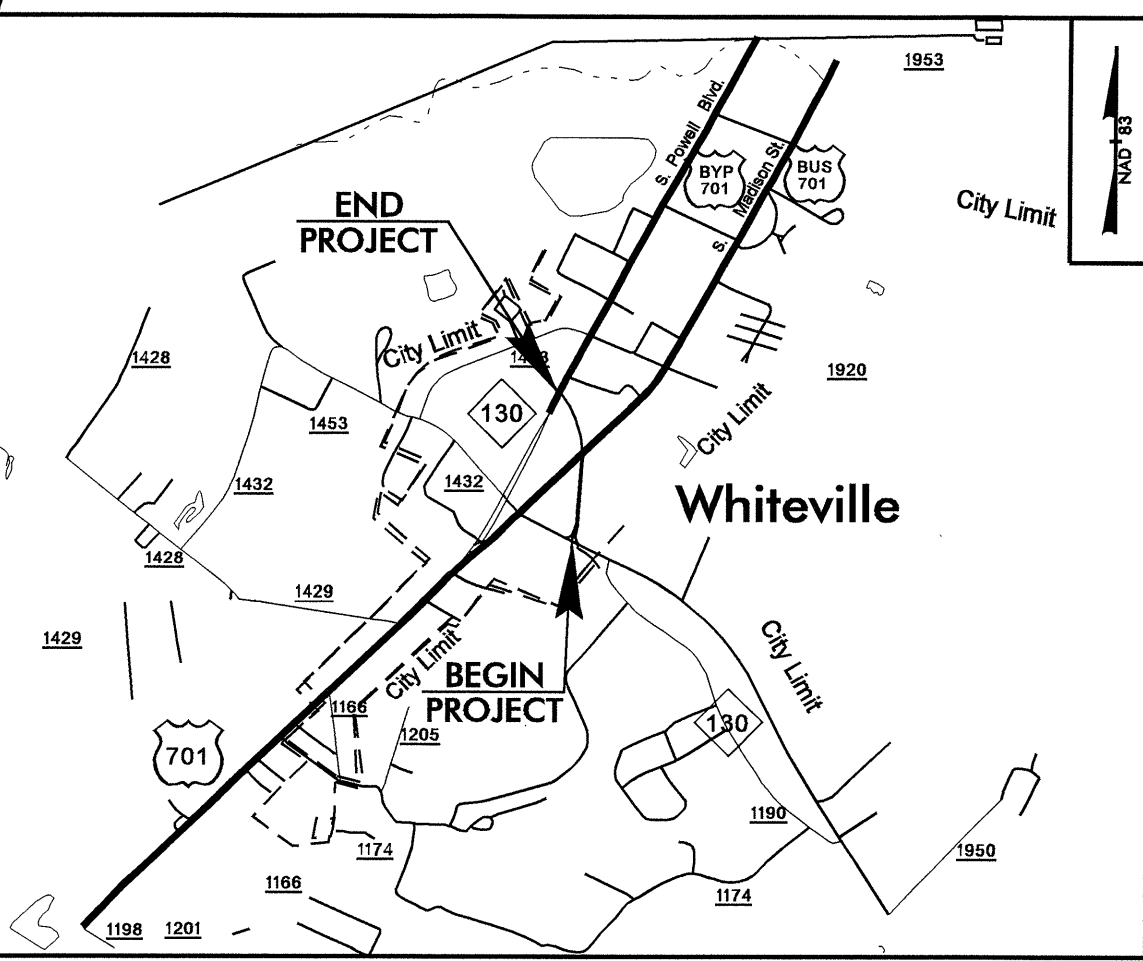
5/14/99  
 30-SEP-2008 16:24  
 37972.dwg  
 37972-Utilities-r-dj-ut-proj\37972-ut-udt.dgn  
 37972-Utilities-r-dj-ut-proj\37972-ut-udt.dgn

STATE OF NORTH CAROLINA  
DIVISION OF HIGHWAYS

**UTILITY BY OTHERS PLANS  
COLUMBUS COUNTY**

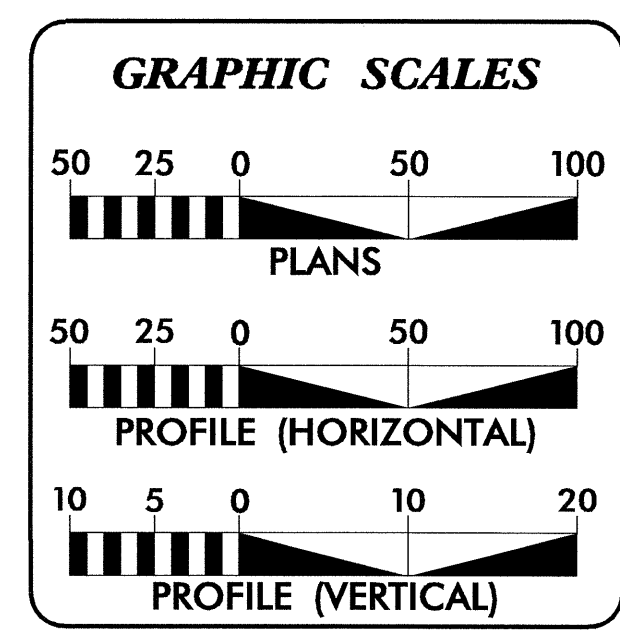
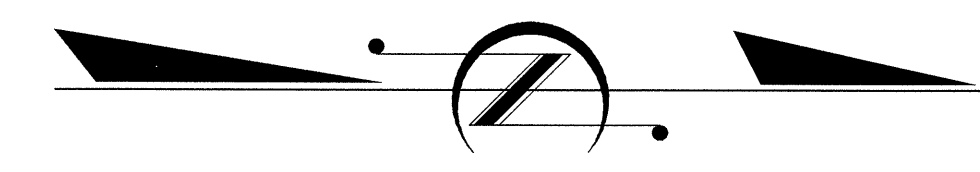
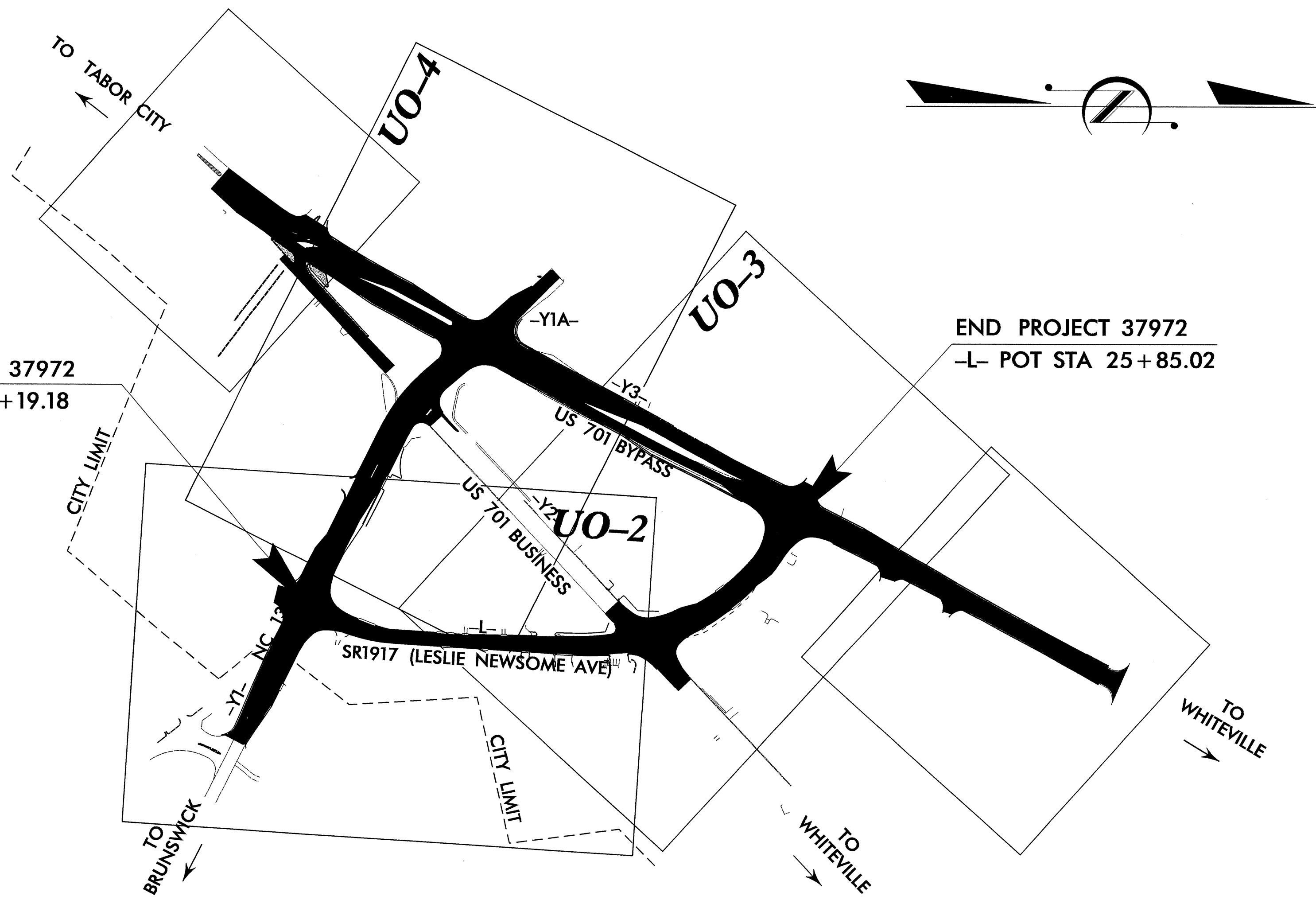
**LOCATION: SR 1917 FROM NC HIGHWAY 130 TO US 701 BYPASS, NC 130 FROM JUST EAST OF SR 1917 TO US 701 BYPASS, AND US 701 BYPASS FROM SOUTH OF NC 130 TO JUST NORTH OF SR 1917 EXTENSION.**

**TYPE OF WORK: UTILITIES BY OTHERS**



VICINITY MAP

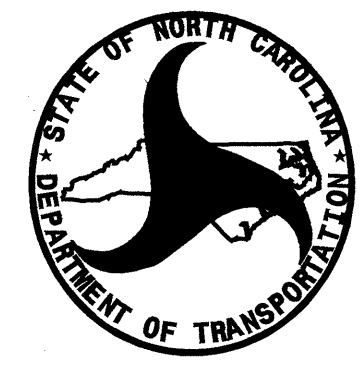
**TIP PROJECT: 37972**



**INDEX OF SHEETS**

SHEET NO.	DESCRIPTION
UO-1	TITLE SHEET
UO-2 THRU UO-4	UTILITY BY OTHERS PLAN SHEETS

- UTILITY OWNERS ON PROJECT**
- (1) POWER DISTRIBUTION - PROGRESS ENERGY
  - (2) TELEPHONE - EMBARQ
  - (3) TIME WARNER CABLE - CABLE TV



PREPARED IN THE OFFICE OF:  
**DIVISION OF HIGHWAYS  
UTILITIES ENGINEERING  
SECTION**

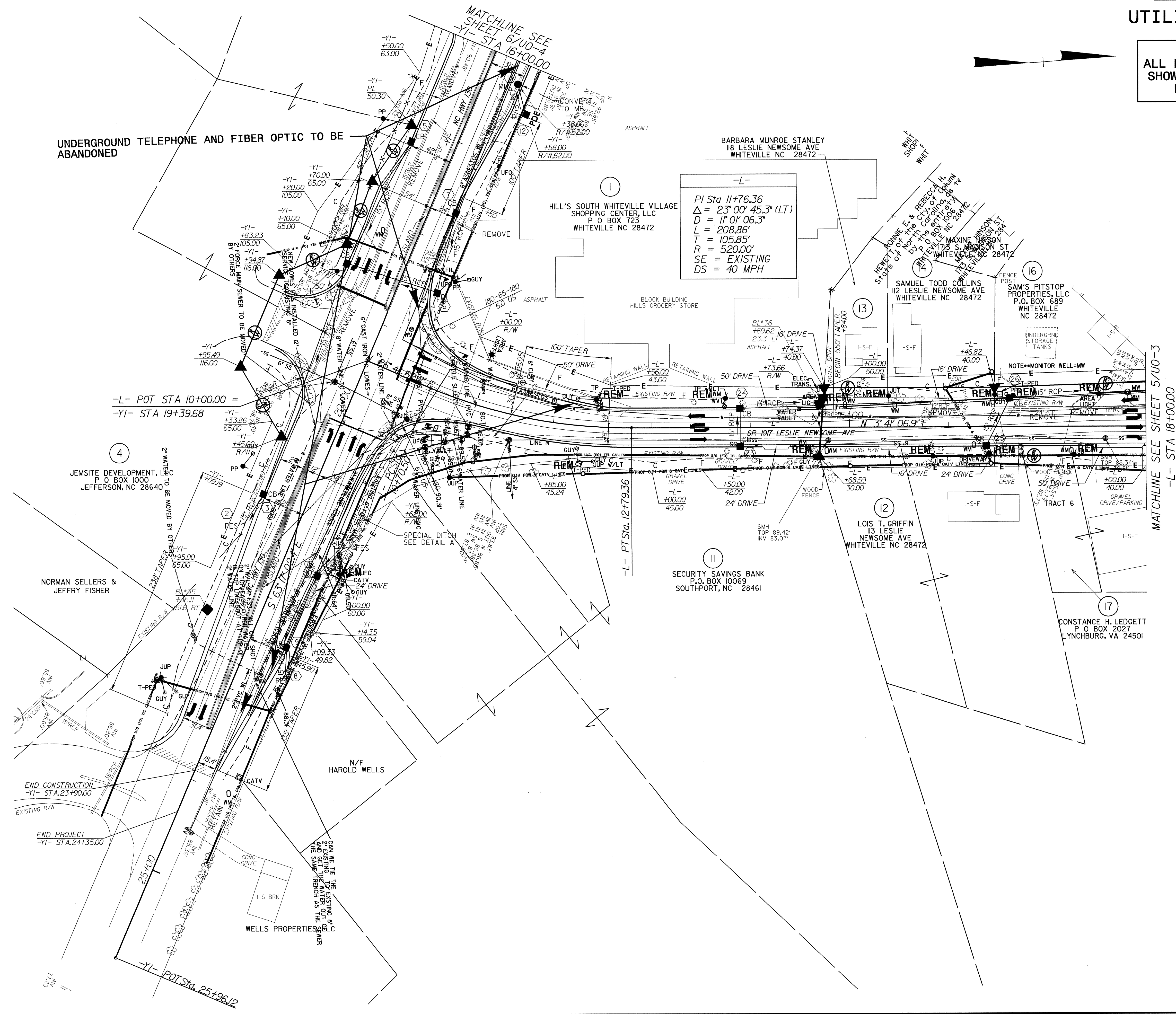
1591 MAIL SERVICES CENTER  
RALEIGH NC 27699-1591  
PHONE (919) 250-4128  
FAX (919) 250-4119

**Roger Worthington, P.E.** UTILITIES SECTION ENGINEER  
**R. B. Wilkins, P.E.** UTILITIES SQUAD LEADER PROJECT ENGINEER  
**John A. Nigro, P.E.** UTILITIES PROJECT DESIGNER

24-SEP-2008 09:13  
d:\37972\design\37972\utilities\rdy\_ut\proj\37972\_ut\_title\_uo1\_psh.dgn  
\$\$\$\$\$USERNAME\$\$\$\$\$

### UTILITIES BY OTHERS

**NOTE:**  
ALL PROPOSED UTILITY WORK  
SHOWN ON THIS SHEET WILL  
BE DONE BY OTHERS



5/14/09  
 24-SEP-2008 13:54  
 dest:\s\p\2008\37972\_ut\_4\_uo2\_psh.dgn  
 PS237493 9/24/2008 37972\_ut\_4\_uo2\_psh jnigro PS-Oce34dtbond

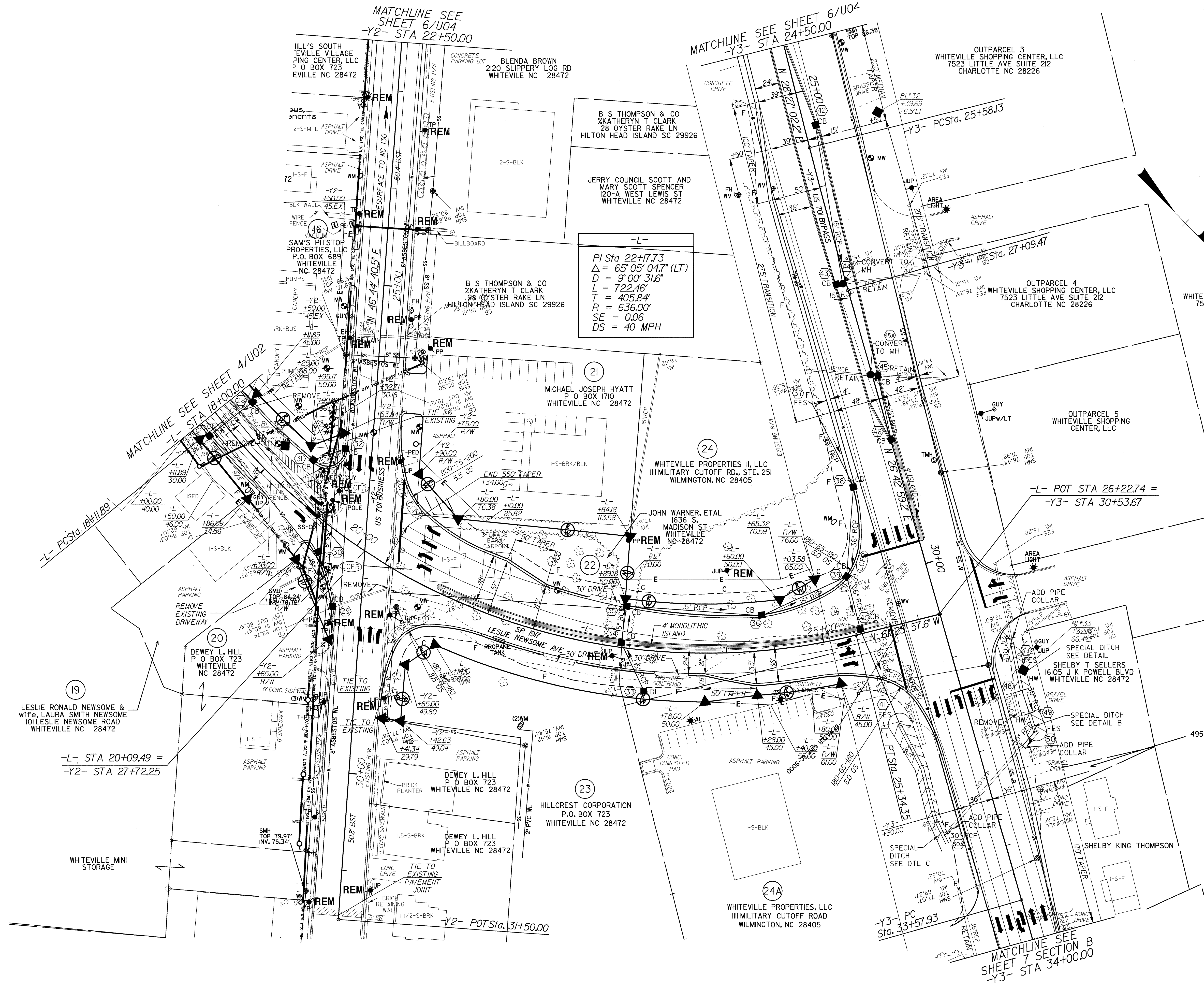
# UTILITIES BY OTHERS

**NOTE:**  
ALL PROPOSED UTILITY WORK  
SHOWN ON THIS SHEET WILL  
BE DONE BY OTHERS

-Y3-  
PI Sta 26+33.80  
 $\Delta = 1'44'03.0" (LT)$   
 $D = 1'08'45.3"$   
 $L = 151.34'$   
 $T = 75.67'$   
 $R = 5,000.00'$   
 $SE = EXISTING$

-L-  
PI Sta 22+17.73  
 $\Delta = 65'05'04.7" (LT)$   
 $D = 9'00'31.8"$   
 $L = 722.46'$   
 $T = 405.84'$   
 $R = 636.00'$   
 $SE = 0.06$   
 $DS = 40 MPH$

5/14/99  
 24-SEP-2008 13:55  
 d:\proj\37972\util\ps\37972\_ut\_5\_uo3\_psh.dgn  
 37972\_UO3\_PSH.dwg  
 37972\_UO3\_PSH.dwg



MATCHLINE SEE  
SHEET 7 SECTION B  
-Y3- STA 34+00.00

MATCHLINE SEE SHEET 4/UO2  
-L- STA 18+00.00

MATCHLINE SEE  
SHEET 6/UO4  
-Y2- STA 22+50.00

MATCHLINE SEE SHEET 6/UO4  
-Y3- STA 24+50.00

-L- STA 20+09.49 =  
-Y2- STA 27+72.25

-L- POT STA 26+22.74 =  
-Y3- STA 30+53.67

-Y2- POT Sta. 31+50.00

-Y3- PC  
Sta. 33+57.93

-Y3- PC Sta. 25+58.13

-Y3- POT Sta. 27+09.47

-Y3- POT Sta. 26+22.74 =  
-Y3- STA 30+53.67

-Y3- POT Sta. 26+22.74 =  
-Y3- STA 30+53.67

-Y3- POT Sta. 26+22.74 =  
-Y3- STA 30+53.67

-Y3- POT Sta. 26+22.74 =  
-Y3- STA 30+53.67

-Y3- POT Sta. 26+22.74 =  
-Y3- STA 30+53.67

-Y3- POT Sta. 26+22.74 =  
-Y3- STA 30+53.67

-Y3- POT Sta. 26+22.74 =  
-Y3- STA 30+53.67



