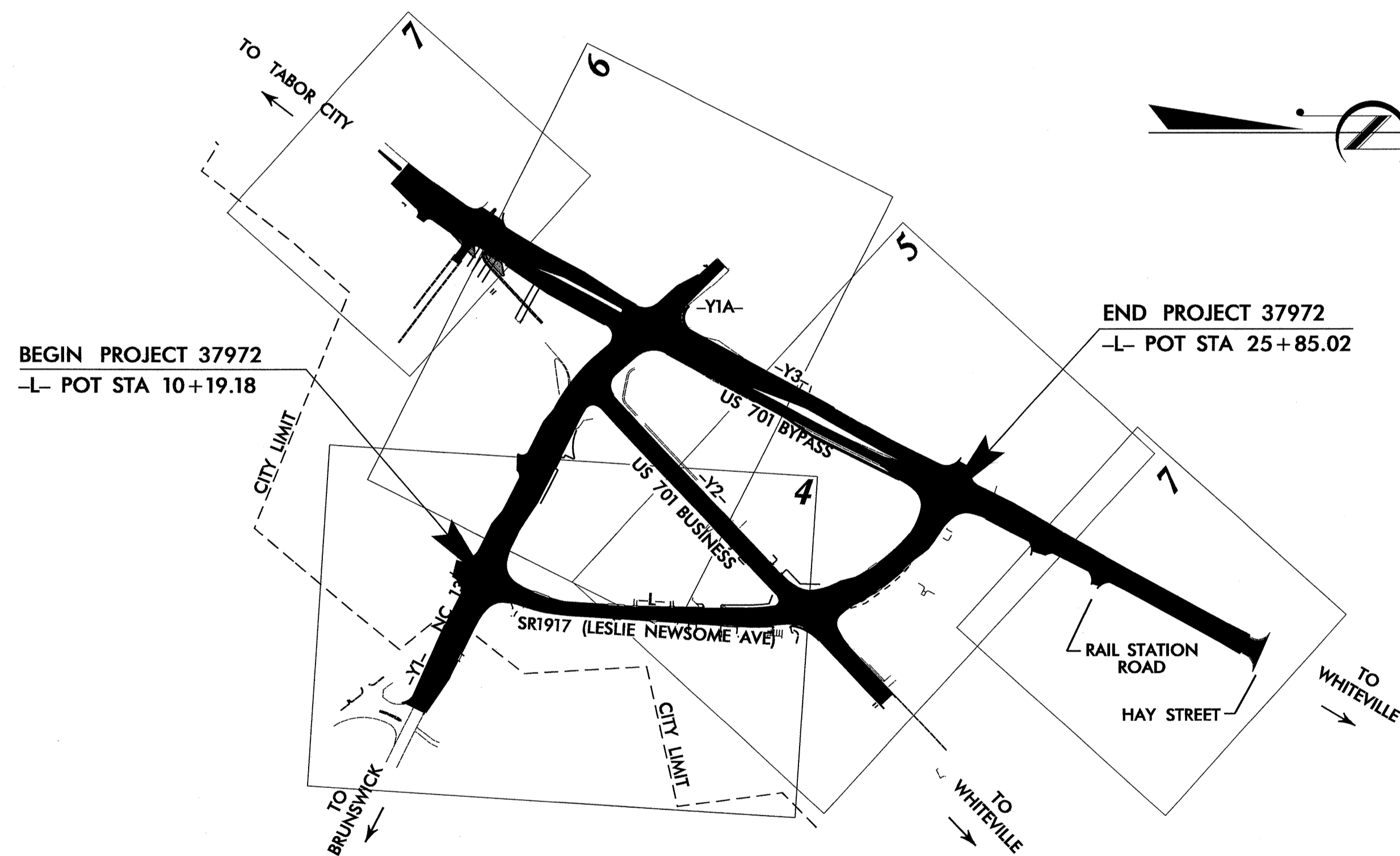


MA PROJECT: 37972

STATE OF NORTH CAROLINA  
 DIVISION OF HIGHWAYS  
 PLAN FOR PROPOSED  
 HIGHWAY EROSION CONTROL  
**COLUMBUS COUNTY**

**LOCATION: SR 1917 FROM NC HIGHWAY 130 TO US 701 BYPASS, NC 130 FROM JUST EAST OF SR 1917 TO US 701 BYPASS, AND US 701 BYPASS FROM SOUTH OF NC 130 TO JUST NORTH OF SR 1917 EXTENSION.**

**TYPE OF WORK: GRADING, PAVING, RESURFACING, DRAINAGE, WIDENING, AND SIGNALS**



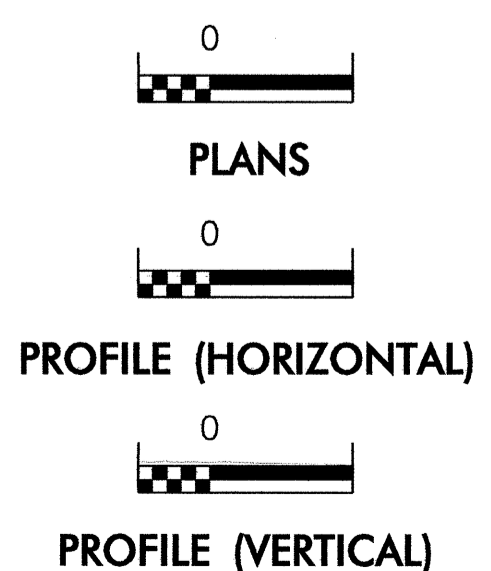
STATE	STATE PROJECT REFERENCE NO.	SHEET NO.	TOTAL SHEETS
N.C.	37972	EC-1	
STATE PROJ. NO.	F.A. PROJ. NO.	DESCRIPTION	

**EROSION AND SEDIMENT CONTROL MEASURES**

Std. #	Description	Symbol
1630.03	Temporary Silt Ditch	--- TSD ---
1630.05	Temporary Diversion	--- TD ---
1605.01	Temporary Silt Fence	
1606.01	Special Sediment Control Fence	--- X X X ---
1622.01	Temporary Berms and Slope Drains	--- B & S D ---
1630.01	Riser Basin	⊙
1630.01	Silt Basin Type B	▨
1633.01	Temporary Rock Silt Check Type-A	▨
1633.01	Temporary Rock Silt Check Type-B	▨
1633.01	Wattle	--- W ---
1634.01	Temporary Rock Sediment Dam Type-A	▨
1634.02	Temporary Rock Sediment Dam Type-B	▨
1635.01	Rock Pipe Inlet Sediment Trap Type-A	⊙
1635.02	Rock Pipe Inlet Sediment Trap Type-B	⊙
1630.04	Stilling Basin	▭
1630.06	Special Stilling Basin	▭
Rock Inlet Sediment Trap:		
1632.01	Type A	⊙
1632.02	Type B	⊙
1632.03	Type C	⊙
Skimmer Basin		▭
Tiered Skimmer Basin		▭
Infiltration Basin		▭

**THIS PROJECT CONTAINS EROSION CONTROL PLANS FOR CLEARING AND GRUBBING PHASE OF CONSTRUCTION.**

**GRAPHIC SCALE**



ROADSIDE ENVIRONMENTAL UNIT  
 DIVISION OF HIGHWAYS  
 STATE OF NORTH CAROLINA

Prepared In the Office of:  
**ROADSIDE ENVIRONMENTAL UNIT**  
 1 South Wilmington St.  
 Raleigh, NC 27611  
**2006 STANDARD SPECIFICATIONS**

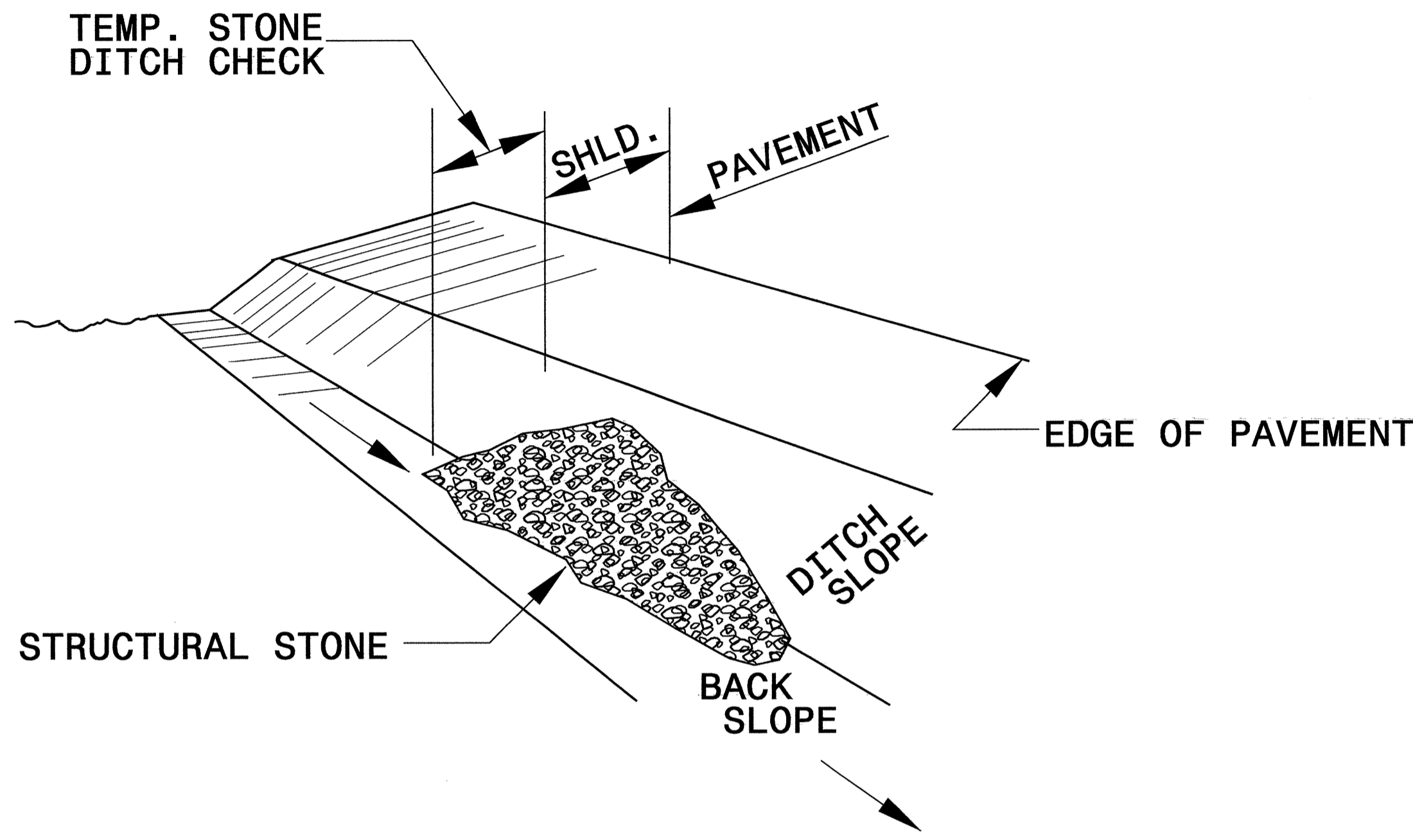
Roadway Standard Drawings  
 The following roadway english standards as appear in "Roadway Standard Drawings"- Roadway Design Unit - N. C. Department of Transportation - Raleigh, N. C., dated July 18, 2006 and the latest revision thereto are applicable to this project and by reference hereby are considered a part of these plans.

1605.01 Temporary Silt Fence	1632.02 Rock Inlet Sediment Trap Type B
1607.01 Gravel Construction Entrance	1632.03 Rock Inlet Sediment Trap Type C
1622.01 Temporary Berms and Slope Drains	1633.01 Temporary Rock Silt Check Type A
1630.03 Temporary Silt Ditch	1635.02 Rock Pipe Inlet Sediment Trap Type B
1630.05 Temporary Diversion	

2:130, 7/21/06, wht/te/ajl/1486023/72\_erosion control.pln/ma/37972.ec.tsh/dgn

PROJECT REFERENCE NO. 37972	SHEET NO. EC-2
RW SHEET NO.	
ROADWAY DESIGN ENGINEER	HYDRAULICS ENGINEER

# TEMPORARY ROCK SILT CHECK TYPE 'B' DETAIL

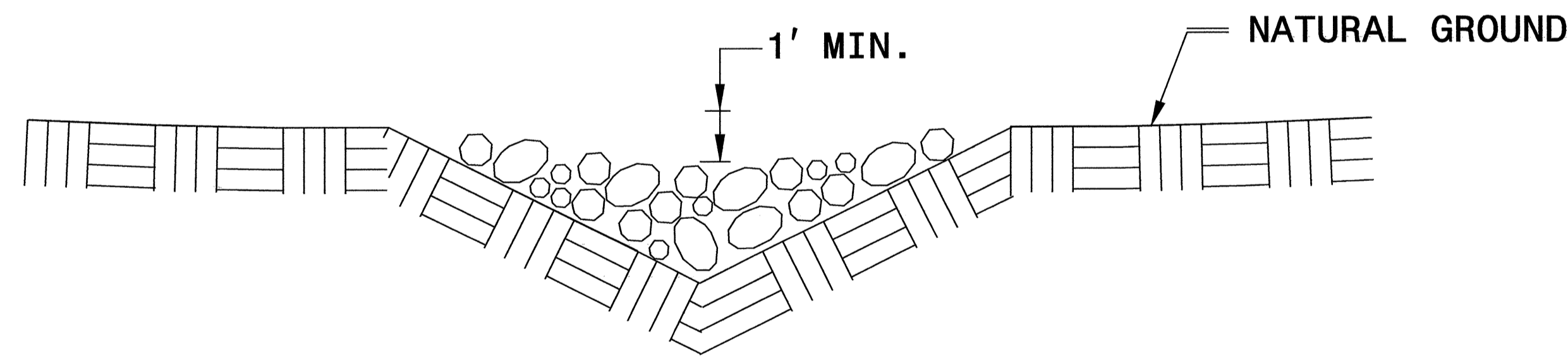


**ISOMETRIC VIEW**

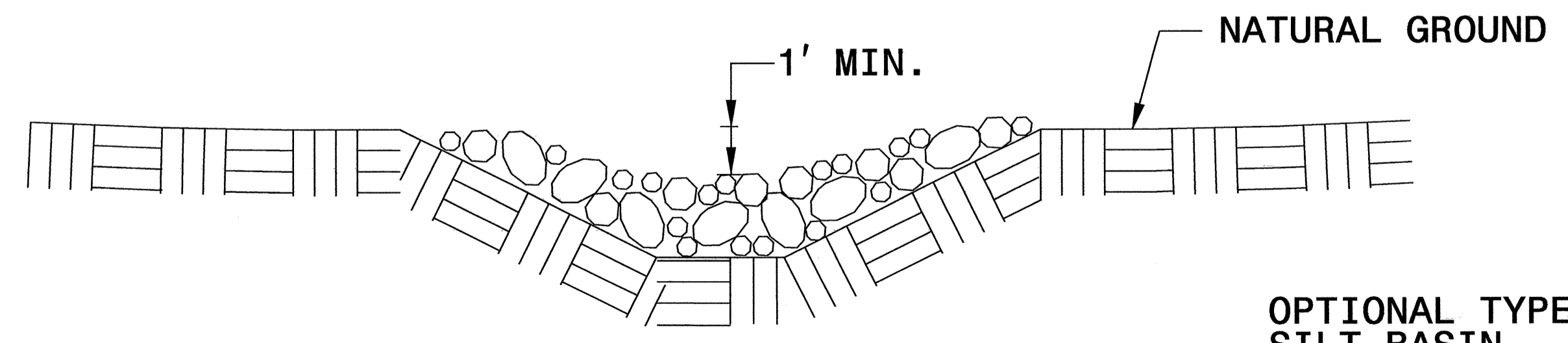
**NOTES:**

USE CLASS 'B' EROSION CONTROL STONE FOR STRUCTURAL STONE.

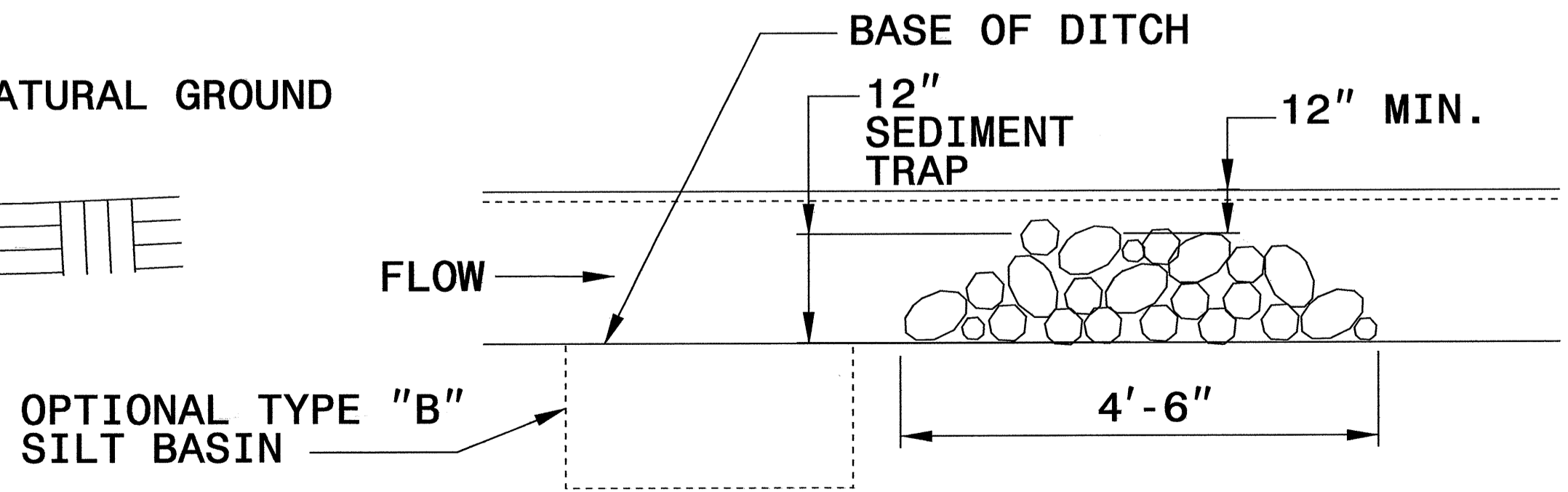
THE ENGINEER MAY DIRECT THE OPTION OF CLASS "A" STONE FOR SITES HAVING LESS THAN ONE (1) ACRE DRAINAGE AREA AND A DITCH GRADE LESS THAN 3%.



**CROSS SECTION VEE DITCH**



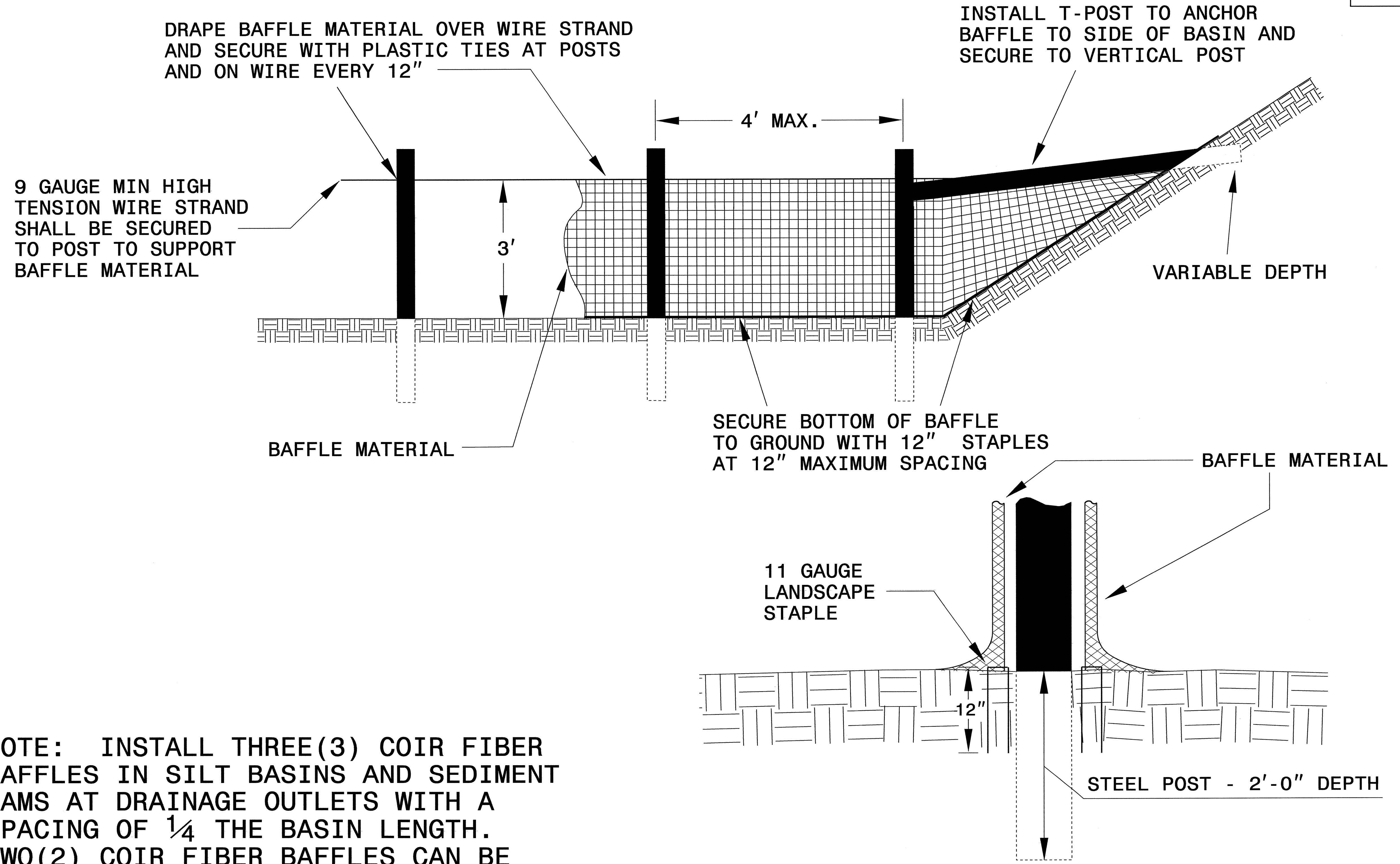
**CROSS SECTION TRAPEZOIDAL DITCH**



**ELEVATION VIEW**

PROJECT REFERENCE NO. 37972	SHEET NO. EC-2A
RW SHEET NO.	
ROADWAY DESIGN ENGINEER	HYDRAULICS ENGINEER

# COIR FIBER BAFFLE DETAIL

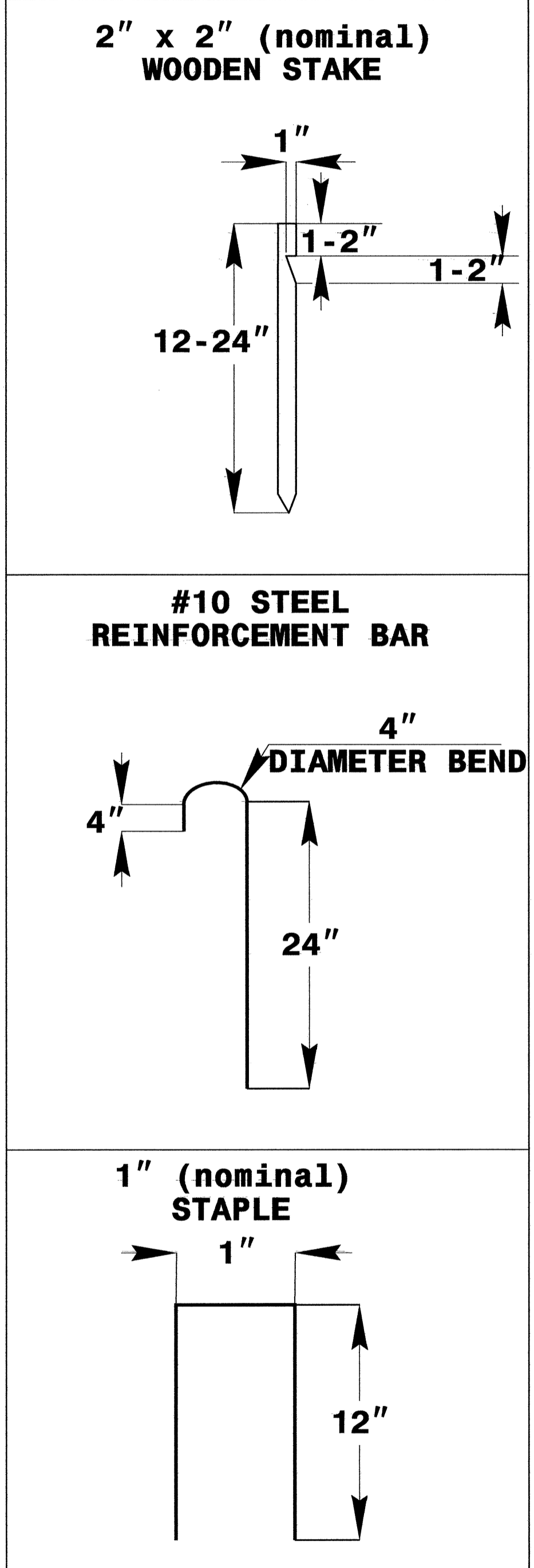
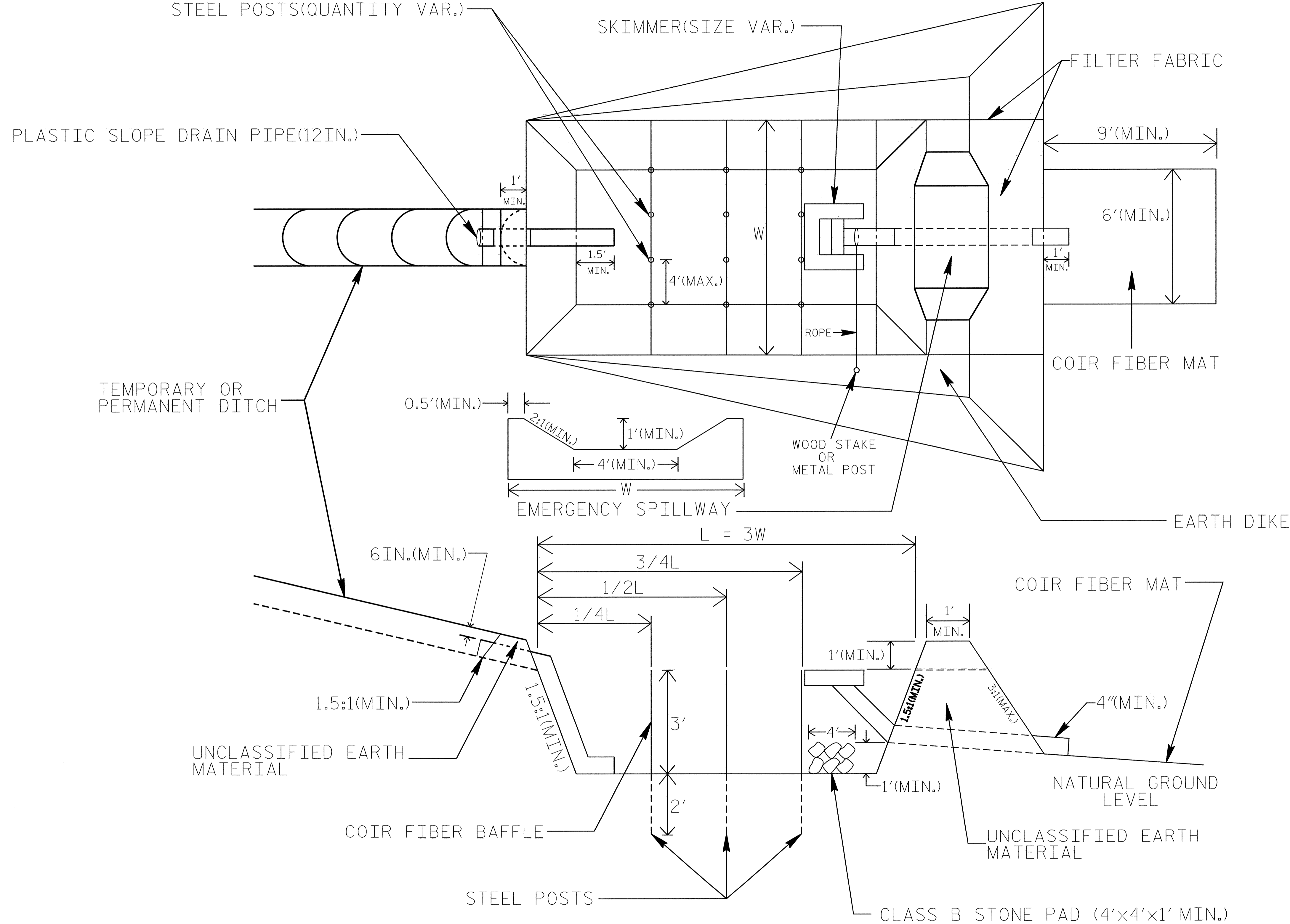


NOTE: INSTALL THREE(3) COIR FIBER BAFFLES IN SILT BASINS AND SEDIMENT DAMS AT DRAINAGE OUTLETS WITH A SPACING OF  $\frac{1}{4}$  THE BASIN LENGTH. TWO(2) COIR FIBER BAFFLES CAN BE INSTALLED IN SILT BASINS AND DAMS LESS THAN 20 FT. IN LENGTH WITH A SPACING OF  $\frac{1}{3}$  THE BASIN LENGTH.

BAFFLE MATERIAL SHALL BE SECURED TO THE BOTTOM AND SIDES OF BASIN USING 12" LANDSCAPE STAPLES

# SKIMMER BASIN WITH BAFFLES DETAIL

PROJECT REFERENCE NO. 37972	SHEET NO. EC-2B
RW SHEET NO.	
ROADWAY DESIGN ENGINEER	HYDRAULICS ENGINEER



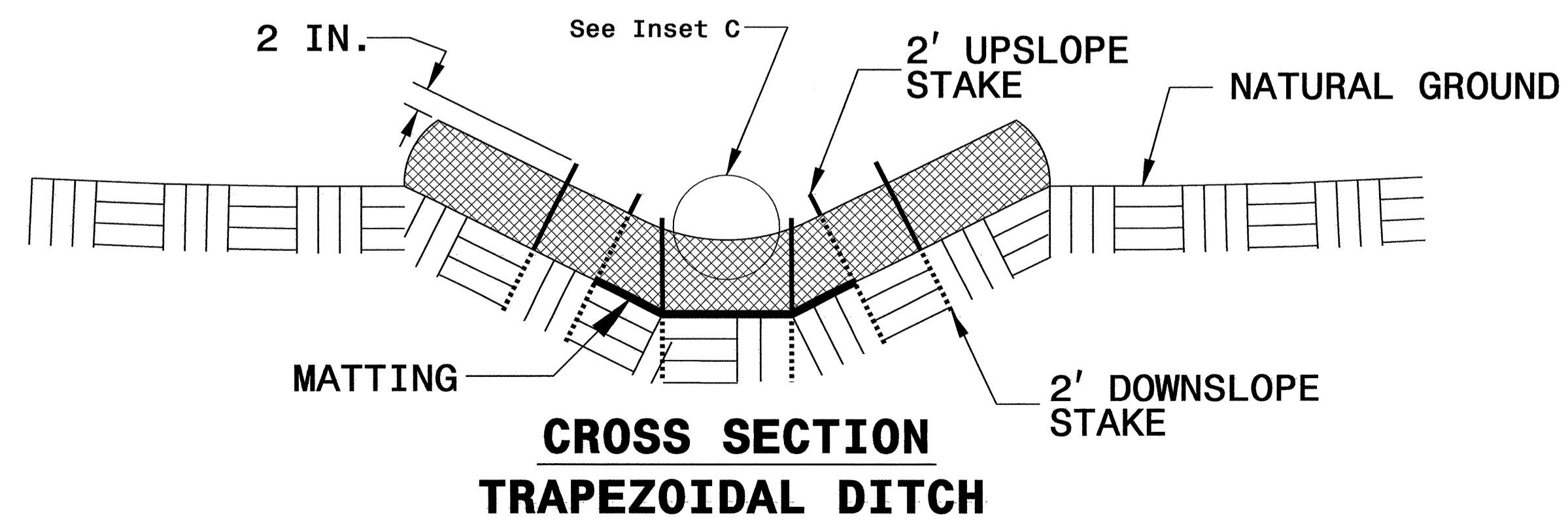
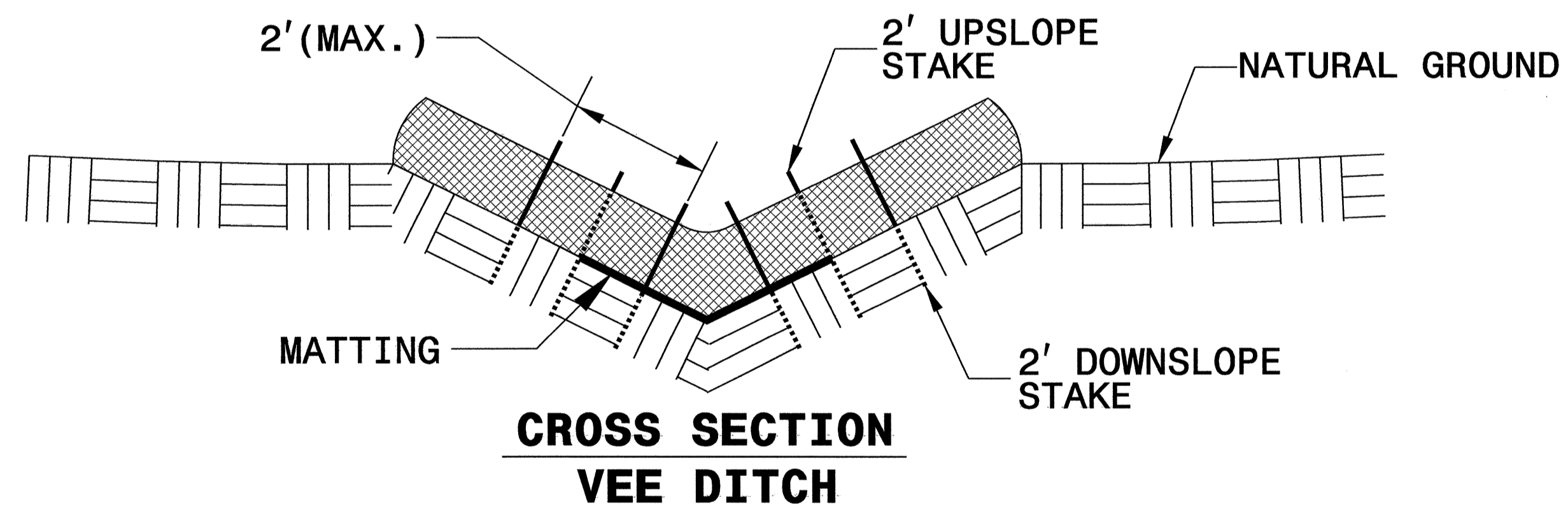
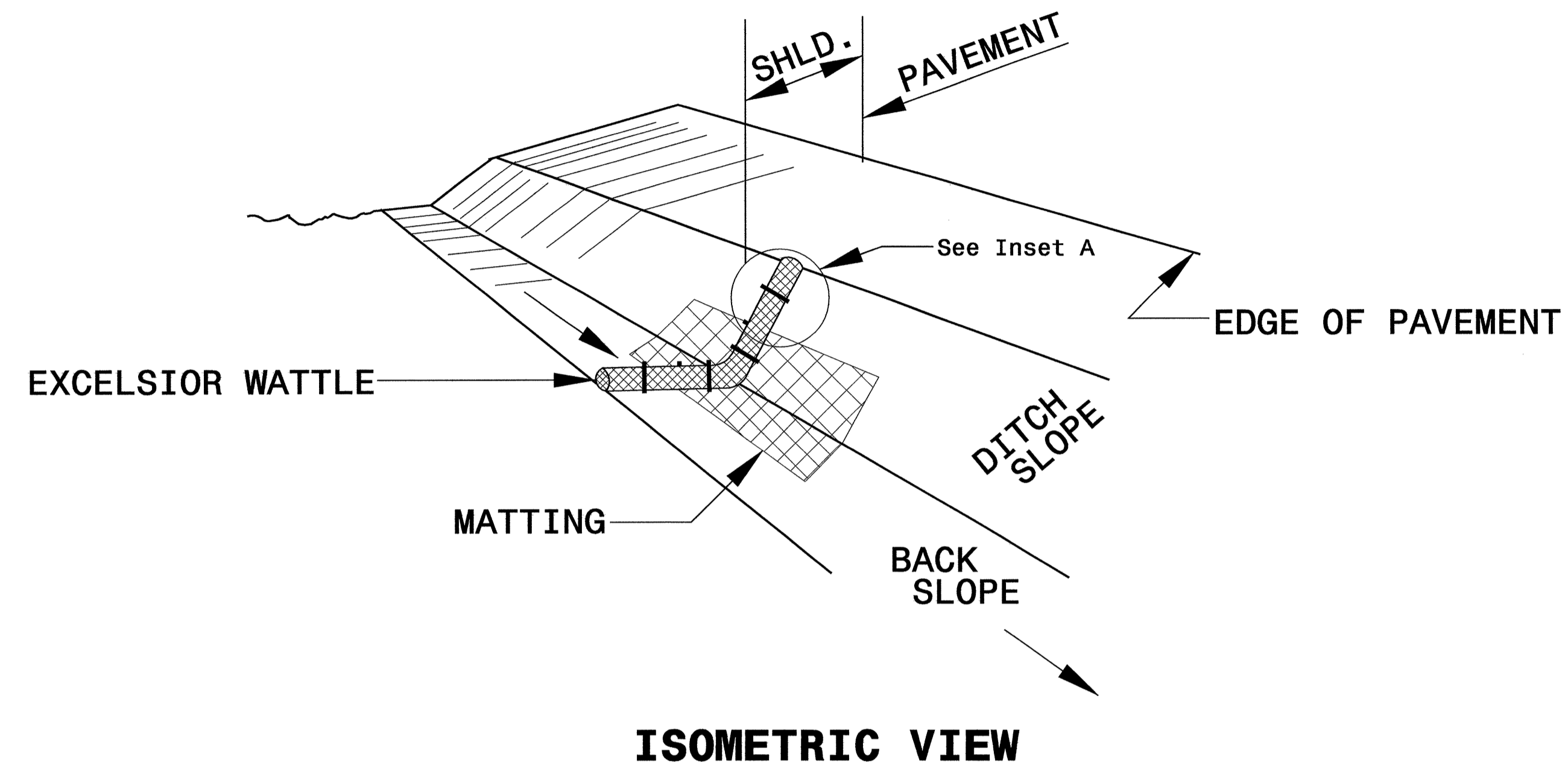
**NOTES**

1. SEED AND PLACE MATTING FOR EROSION CONTROL ON INTERIOR SIDESLOPES.
2. LIMIT EARTH DIKE HEIGHT TO 5 FT.
3. THE MINIMUM BASIN WIDTH SHALL BE 9 FT.
4. DETERMINE EMERGENCY SPILLWAY LENGTH (FT.) USING  $Q/0.8$ , WHERE Q IS FLOW RATE (CFS) INTO BASIN.

NOT TO SCALE

PROJECT REFERENCE NO. 37972	SHEET NO. EC-2C
RW SHEET NO.	
ROADWAY DESIGN ENGINEER	HYDRAULICS ENGINEER

# WATTLE WITH POLYACRYLAMIDE DETAIL



**NOTES:**

USE MINIMUM 12 IN. DIAMETER EXCELSIOR WATTLE.

USE 2 FT. WOODEN STAKES WITH A 2 IN. BY 2 IN. CROSS SECTION.

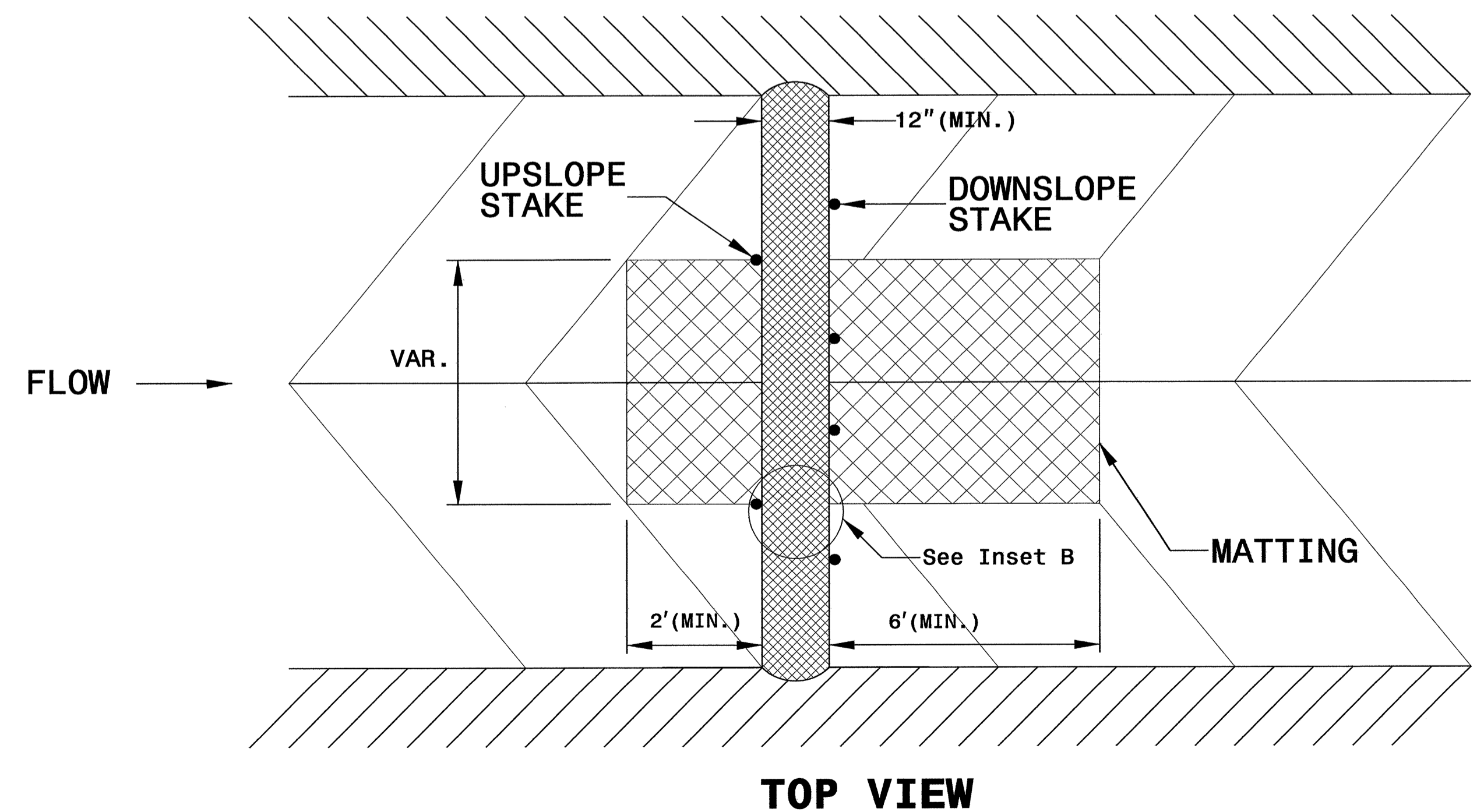
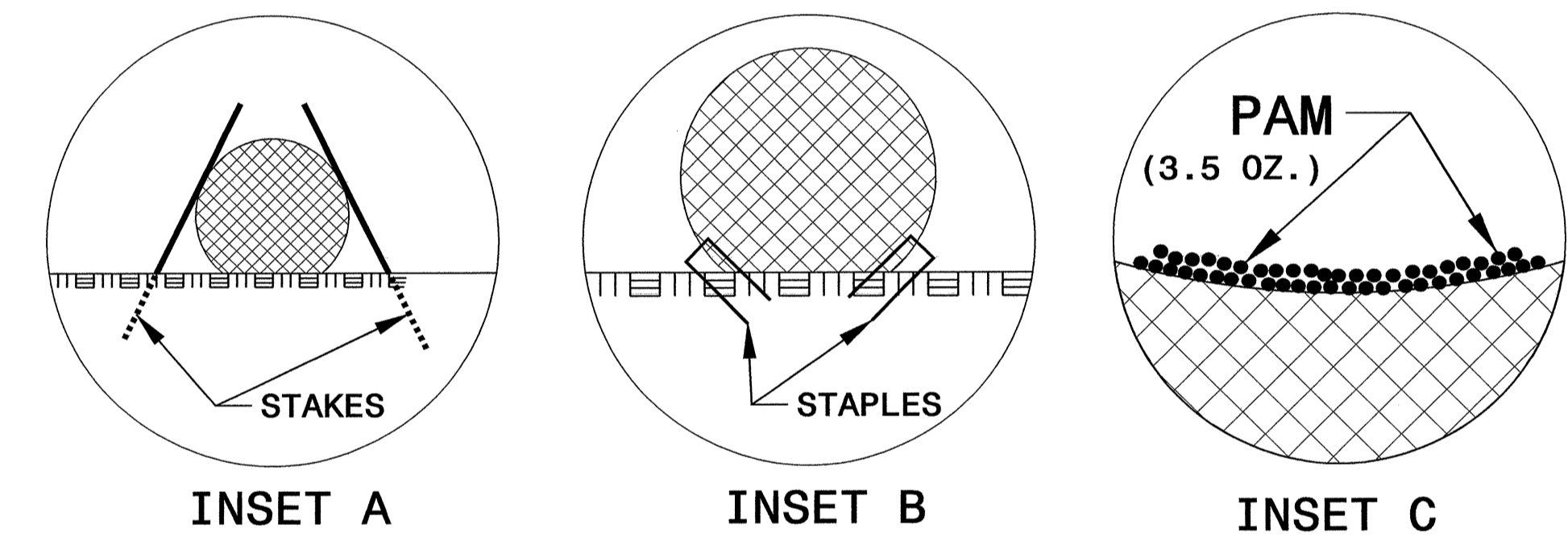
INSTALL A MINIMUM OF 2 UPSLOPE STAKES AND 4 DOWNSLOPE STAKES AT AN ANGLE TO WEDGE WATTLE TO BOTTOM OF DITCH.

PROVIDE STAPLES MADE OF 0.125 IN. DIAMETER STEEL WIRE FORMED INTO A U SHAPE NOT LESS THAN 12" IN LENGTH.

INSTALL STAPLES APPROXIMATELY EVERY 1 LINEAR FOOT ON BOTH SIDES OF WATTLE AND AT EACH END TO SECURE IT TO THE SOIL.

INSTALL MATTING IN ACCORDANCE WITH SECTION 1631 OF THE STANDARD SPECIFICATIONS.

INITIALLY APPLY 3.5 OUNCES OF ANIONIC OR NEUTRALLY CHARGED POLYACRYLAMIDE (PAM) OVER WATTLE WHERE WATER WILL FLOW AND AFTER EVERY RAINFALL EVENT THAT IS EQUAL TO OR EXCEEDS 0.25 IN.



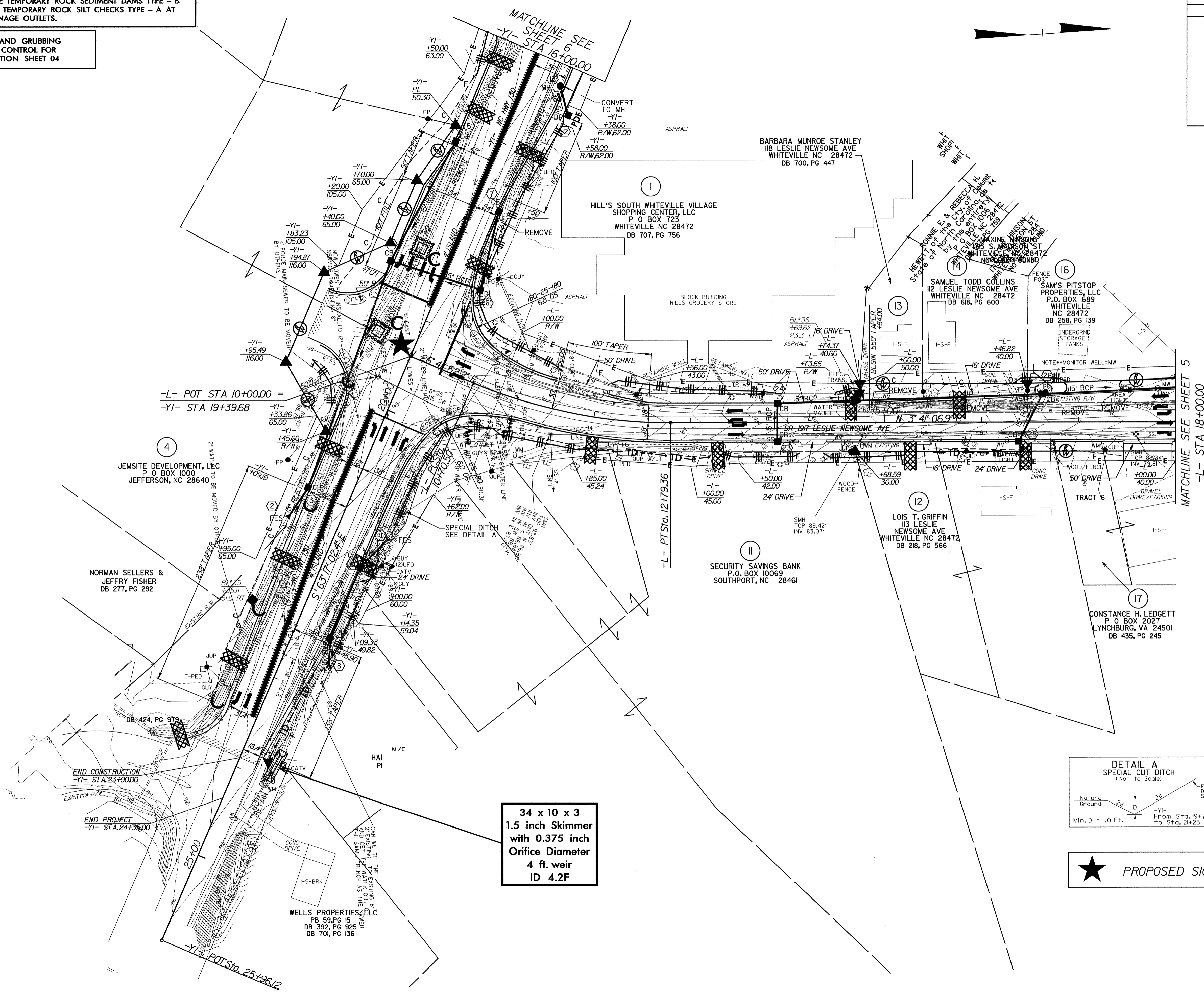


PROJECT REFERENCE NO.	SHEET NO.
37972	EC-04/CONST.04
RW SHEET NO.	
ROADWAY DESIGN ENGINEER	HYDRAULICS ENGINEER

NOTE:  
PLACE TEMPORARY ROCK SEDIMENT DAMS TYPE - B AND TEMPORARY ROCK SILT CHECKS TYPE - A AT DRAINAGE OUTLETS.

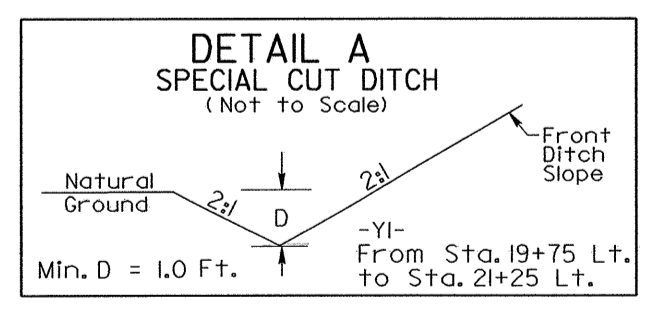
CLEARING AND GRUBBING  
EROSION CONTROL FOR  
CONSTRUCTION SHEET 04

REVISIONS



-L- POT STA 10+00.00 =  
-YI- STA 19+39.68

34 x 10 x 3  
1.5 inch Skimmer  
with 0.375 inch  
Orifice Diameter  
4 ft. weir  
ID 4.2F



★ PROPOSED SIGNAL

8/17/99

15-SEP-2008 6:58:37 AM  
d:\vme-37972\37972\whiteville\ec\37972\erosion control plans\37972.ec.s04.dgn  
AT: RAN\1221443

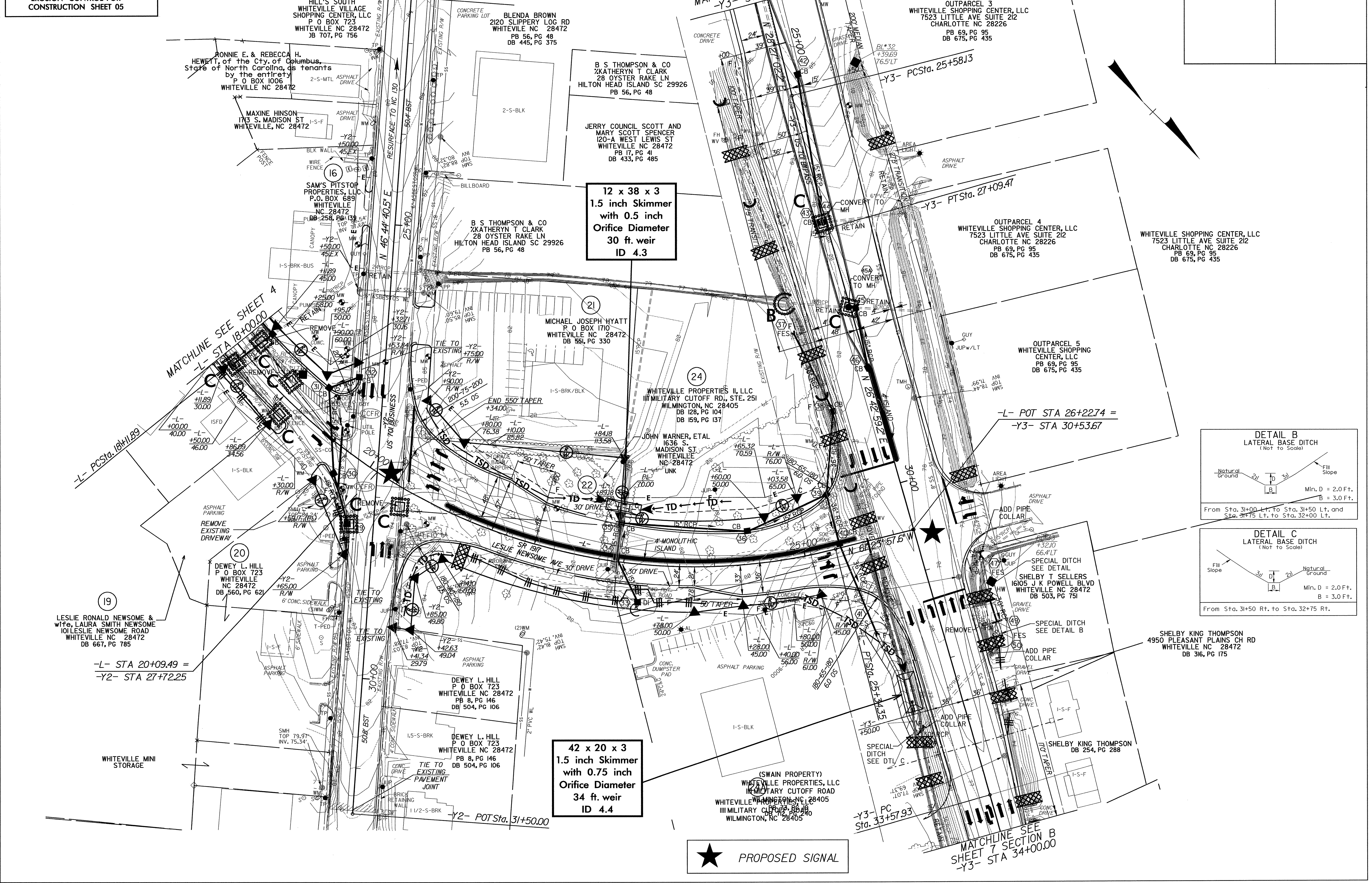
PROJECT REFERENCE NO.		SHEET NO.	
37972		EC-05/CONST.05	
RW SHEET NO.			
ROADWAY DESIGN ENGINEER		HYDRAULICS ENGINEER	

NOTE: PLACE TEMPORARY ROCK SEDIMENT DAMS TYPE - B AND TEMPORARY ROCK SILT CHECKS TYPE - A AT DRAINAGE OUTLETS.

CLEARING AND GRUBBING EROSION CONTROL FOR CONSTRUCTION SHEET 05

8/17/09

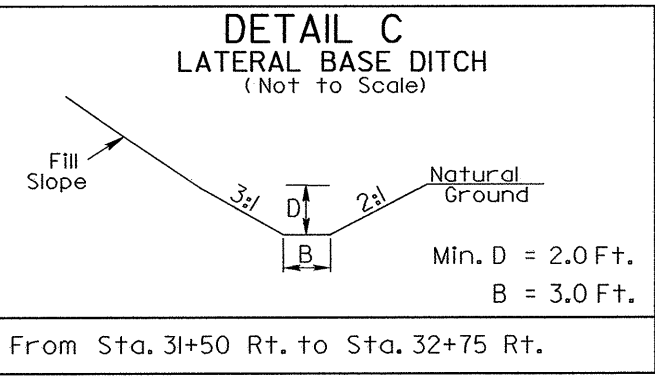
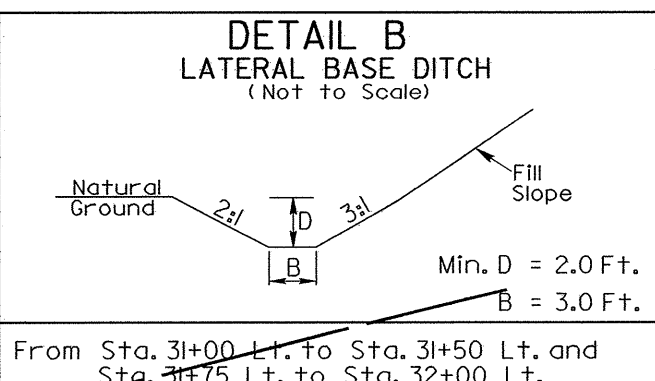
16-SEP-2008 09:34 d:\vme\_37972\_37972\_erosion\_control\_plans\37972.ec\_s05.dgn



12 x 38 x 3  
1.5 inch Skimmer  
with 0.5 inch  
Orifice Diameter  
30 ft. weir  
ID 4.3

42 x 20 x 3  
1.5 inch Skimmer  
with 0.75 inch  
Orifice Diameter  
34 ft. weir  
ID 4.4

★ PROPOSED SIGNAL



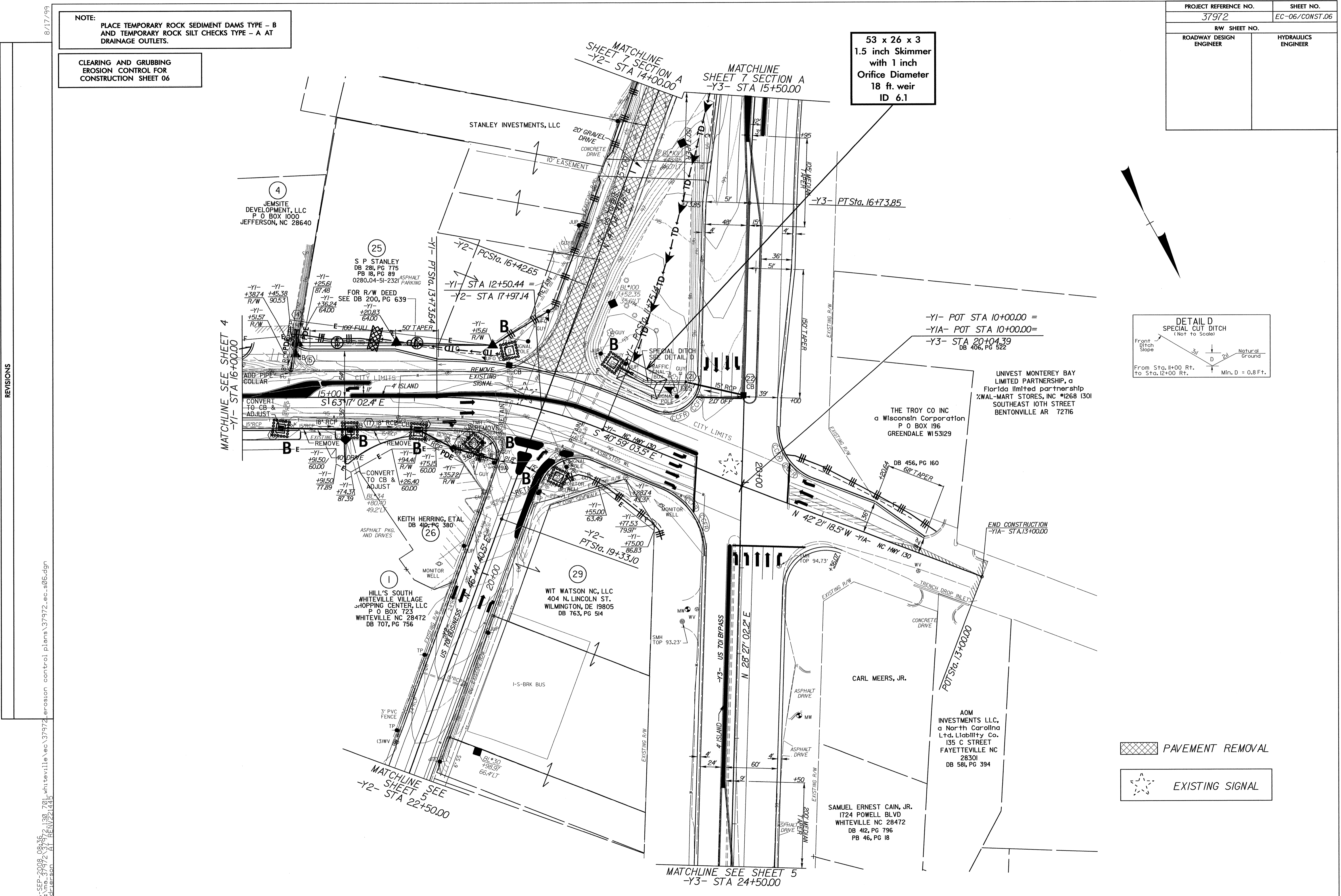
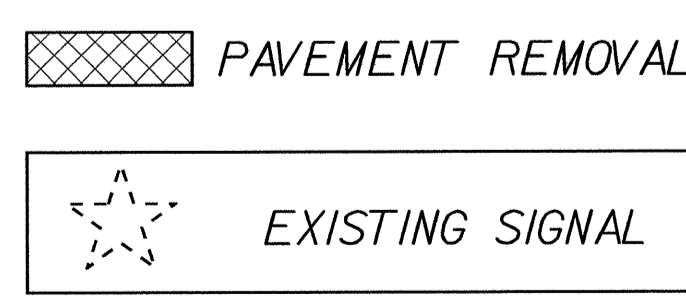
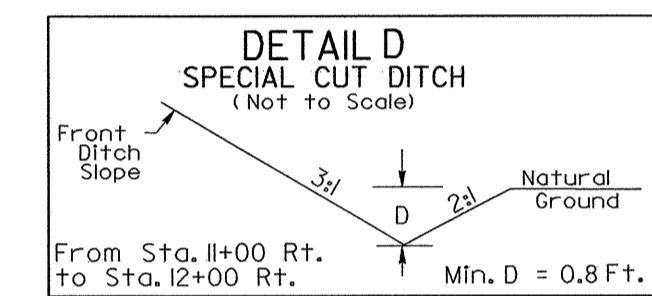


PROJECT REFERENCE NO.		SHEET NO.	
37972		EC-06/CONST.06	
RW SHEET NO.			
ROADWAY DESIGN ENGINEER		HYDRAULICS ENGINEER	

NOTE:  
PLACE TEMPORARY ROCK SEDIMENT DAMS TYPE - B  
AND TEMPORARY ROCK SILT CHECKS TYPE - A AT  
DRAINAGE OUTLETS.

CLEARING AND GRUBBING  
EROSION CONTROL FOR  
CONSTRUCTION SHEET 06

53 x 26 x 3  
1.5 inch Skimmer  
with 1 inch  
Orifice Diameter  
18 ft. weir  
ID 6.1



REVISIONS

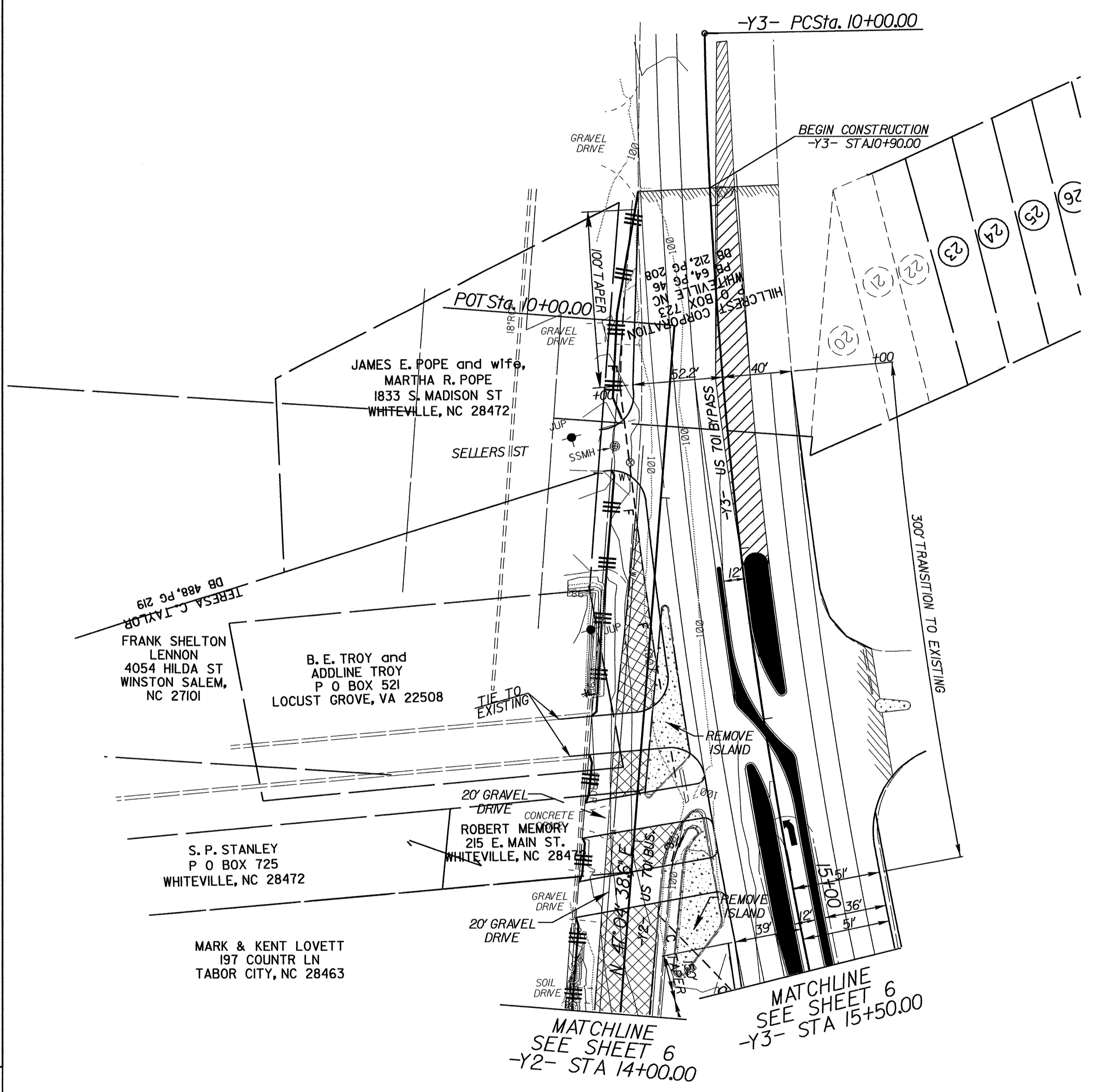
8/17/99  
16-SEP-2008 08:36  
di:\ms\_37972\37972\_130\_701\_whiteville\ec\37972\_erosion control\plans\37972\_ec\_s06.dgn  
adler-son AT BENV221445

PROJECT REFERENCE NO.	SHEET NO.
37972	EC-07/CONST.07
RW SHEET NO.	
ROADWAY DESIGN ENGINEER	HYDRAULICS ENGINEER

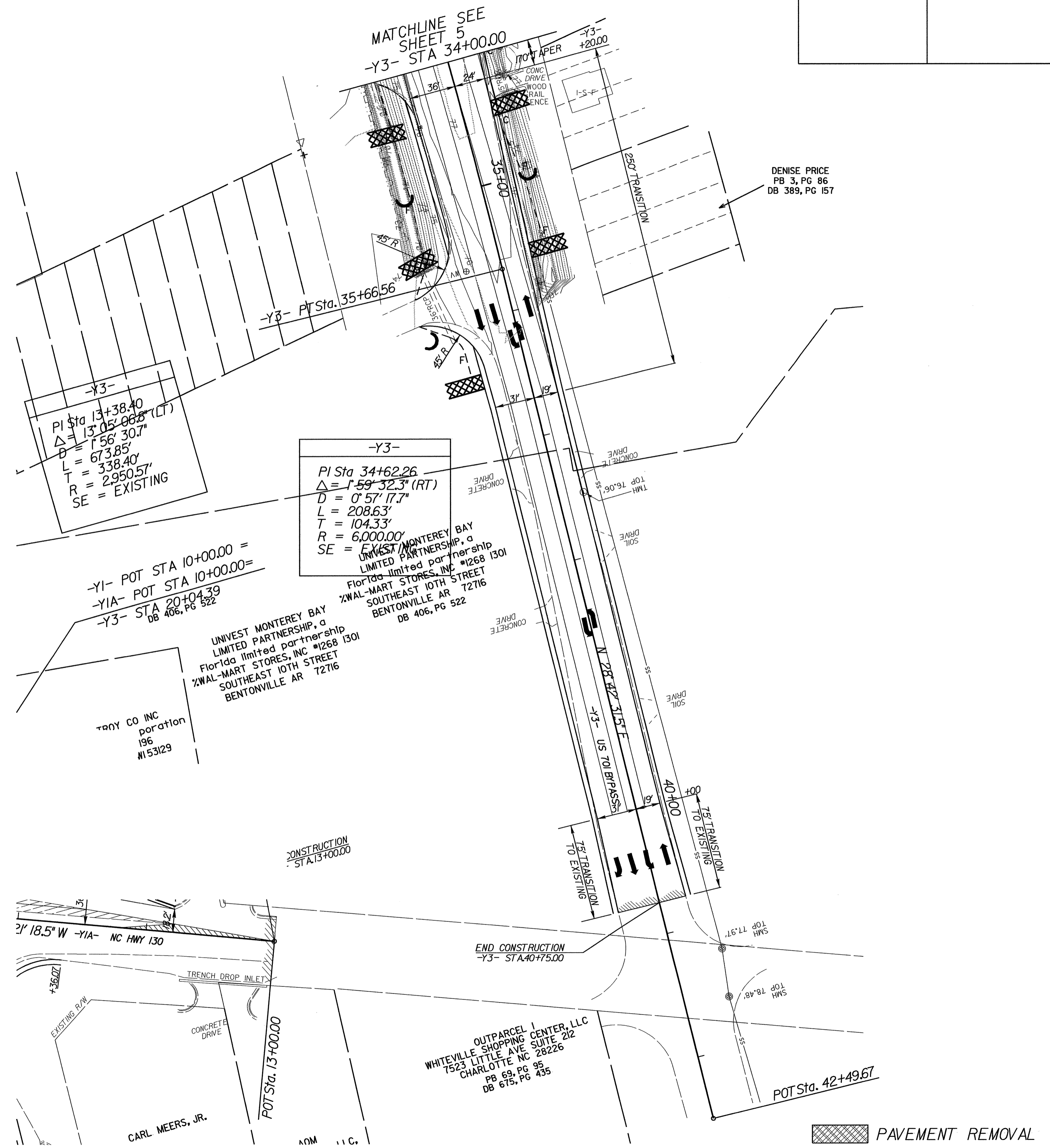
NOTE:  
PLACE TEMPORARY ROCK SEDIMENT DAMS TYPE - B  
AND TEMPORARY ROCK SILT CHECKS TYPE - A AT  
DRAINAGE OUTLETS.

CLEARING AND GRUBBING  
EROSION CONTROL FOR  
CONSTRUCTION SHEET 07

# SECTION A



# SECTION B



DENISE PRICE  
PB 3, PG 86  
DB 389, PG 157

PAVEMENT REMOVAL

REVISIONS

8/17/99  
16-SEP-2008 08:38  
dl.vms-37972\37972\ec-07\whiteville\ec\37972\_erosion control plans\37972\_ec-s07.dgn  
sd.ctarson AT RENY221435

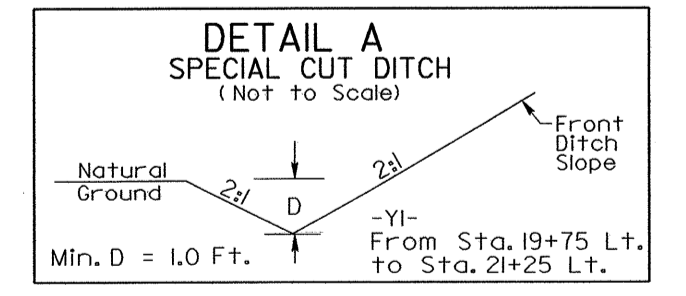
PROJECT REFERENCE NO.	SHEET NO.
37972	EC-08/CONST.04
R/W SHEET NO.	HYDRAULICS ENGINEER
ROADWAY DESIGN ENGINEER	

8/17/99  
 16-SEP-2008 08:39  
 c:\mo\_37972\130\_701\_whiteville.ec\37972\_erosion\_control\_plans\37972.ec.s08.dgn  
 AT REN221445

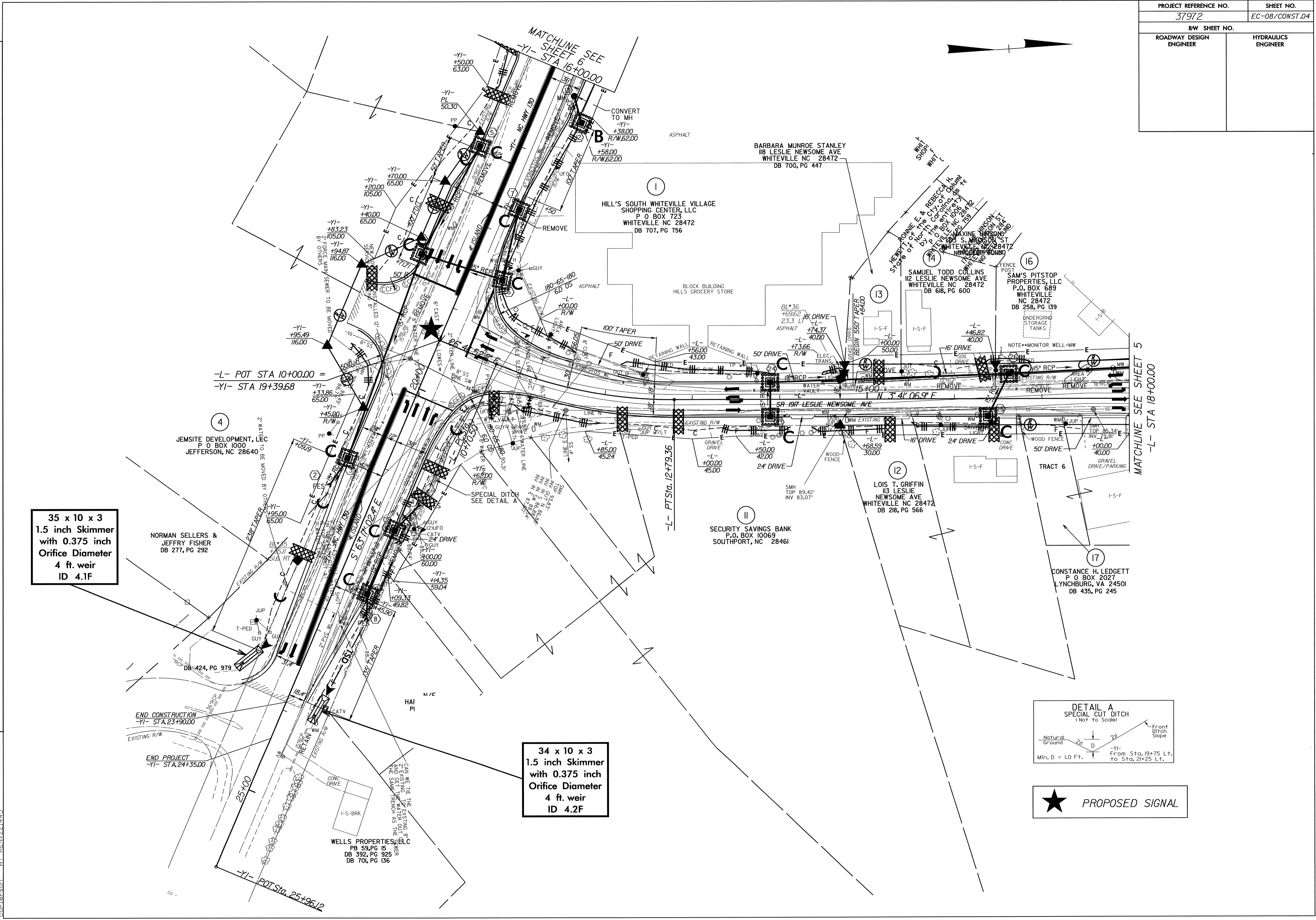
REVISIONS

**35 x 10 x 3**  
**1.5 inch Skimmer**  
**with 0.375 inch**  
**Orifice Diameter**  
**4 ft. weir**  
**ID 4.1F**

**34 x 10 x 3**  
**1.5 inch Skimmer**  
**with 0.375 inch**  
**Orifice Diameter**  
**4 ft. weir**  
**ID 4.2F**

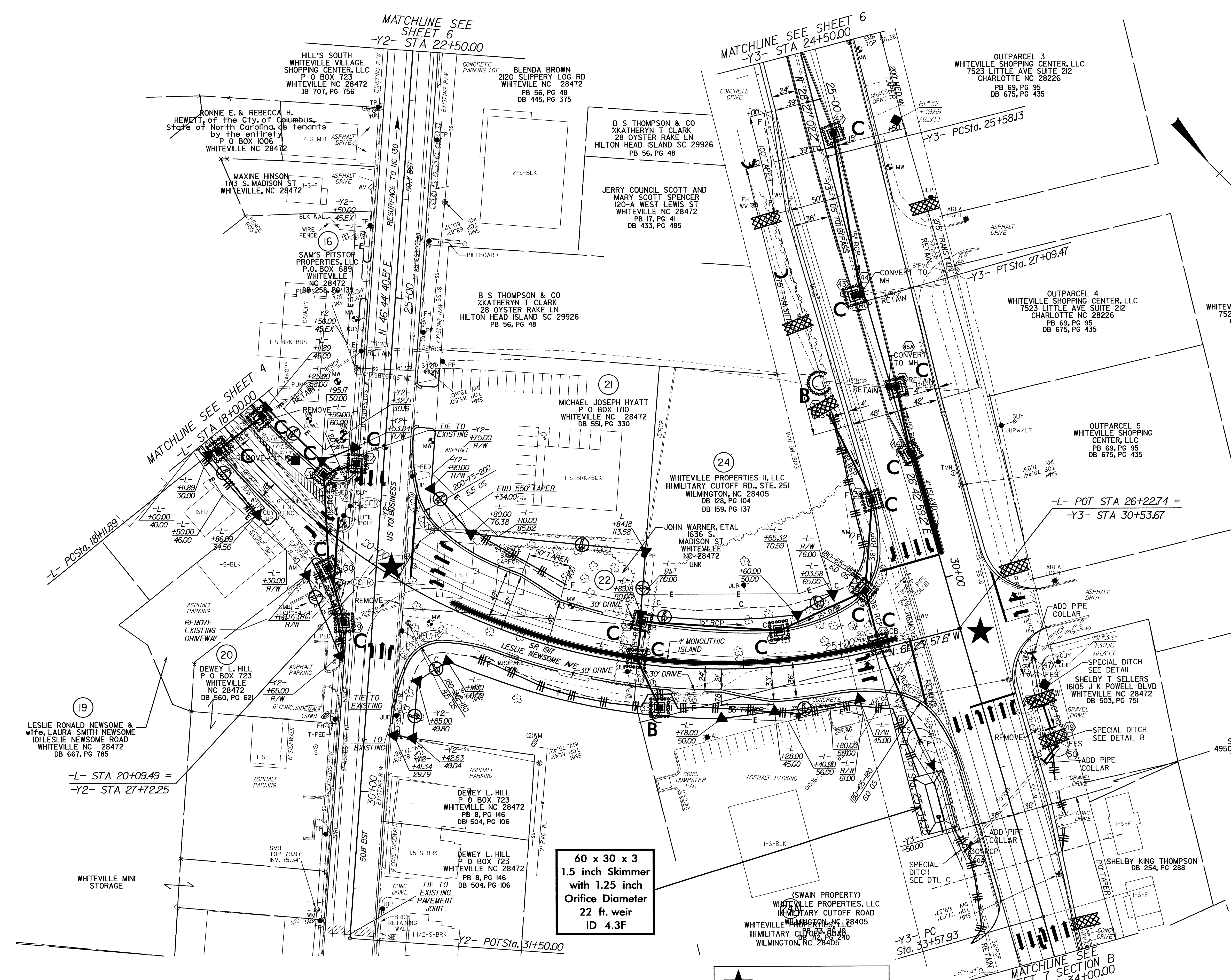


★ PROPOSED SIGNAL



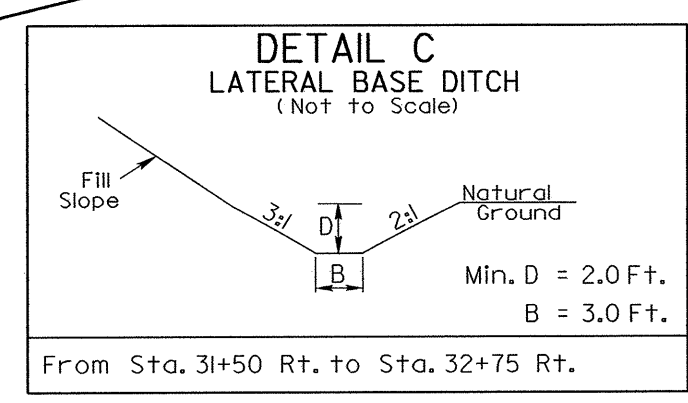
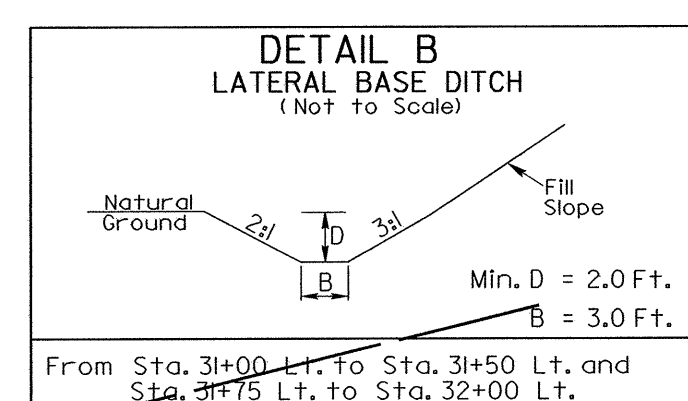
PROJECT REFERENCE NO.	SHEET NO.
37972	EC-09/CONST.05
RW SHEET NO.	
ROADWAY DESIGN ENGINEER	HYDRAULICS ENGINEER

8/17/99  
 REVISIONS  
 16-SEP-2008 08:40  
 df:\ms-37972\37972.ec-09\er-09\er-09.dgn  
 16-SEP-2008 08:40  
 df:\ms-37972\37972.ec-09\er-09\er-09.dgn  
 16-SEP-2008 08:40  
 df:\ms-37972\37972.ec-09\er-09\er-09.dgn



**60 x 30 x 3**  
**1.5 inch Skimmer**  
**with 1.25 inch**  
**Orifice Diameter**  
**22 ft. weir**  
**ID 4.3F**

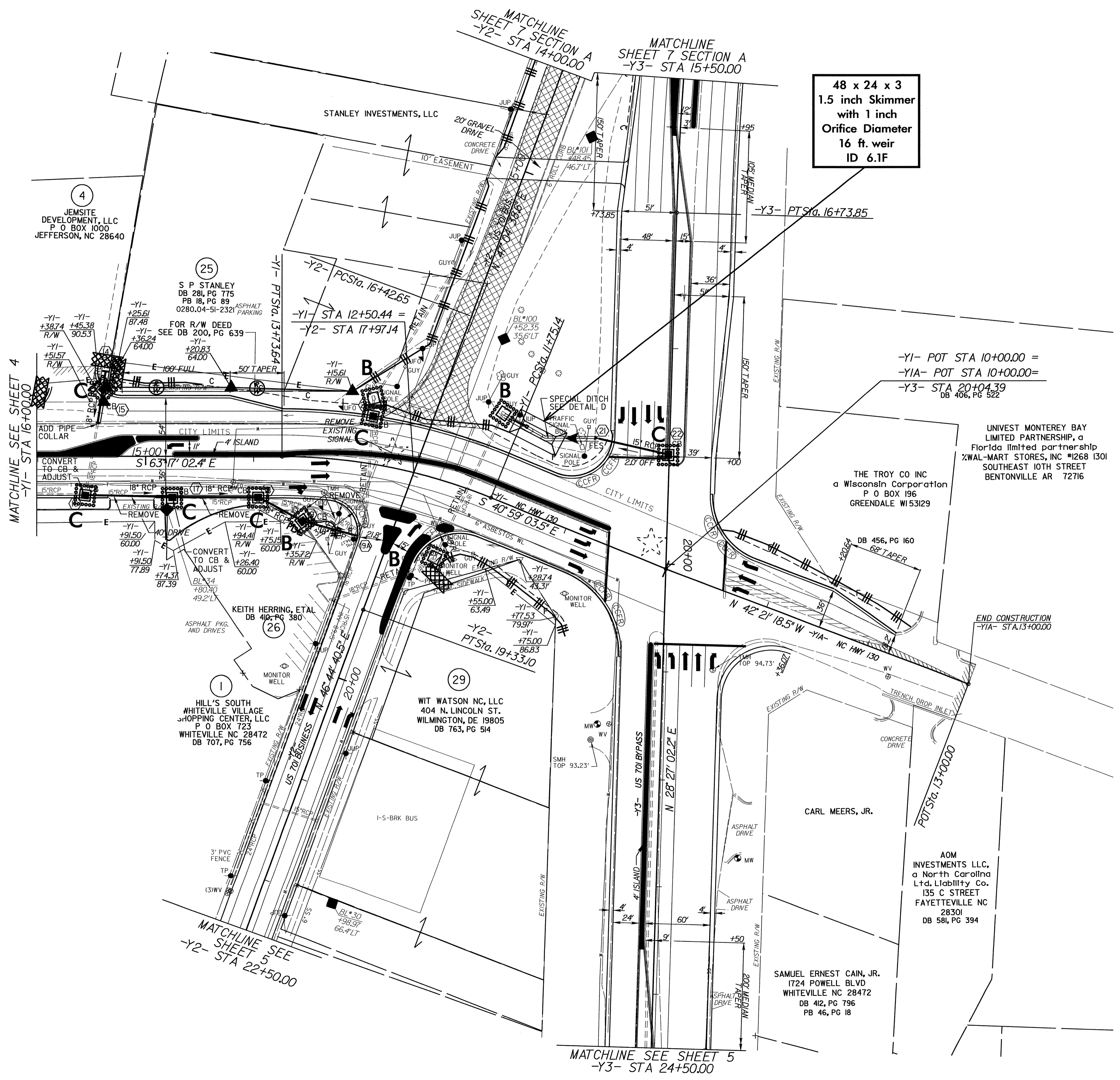
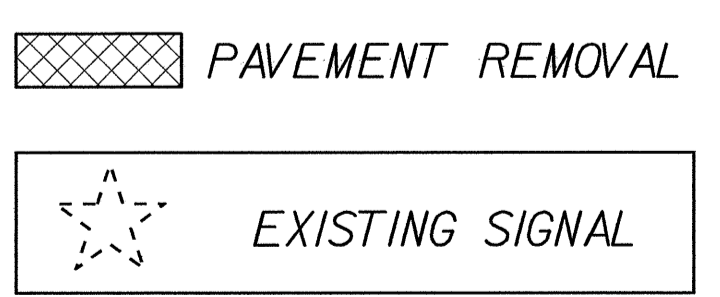
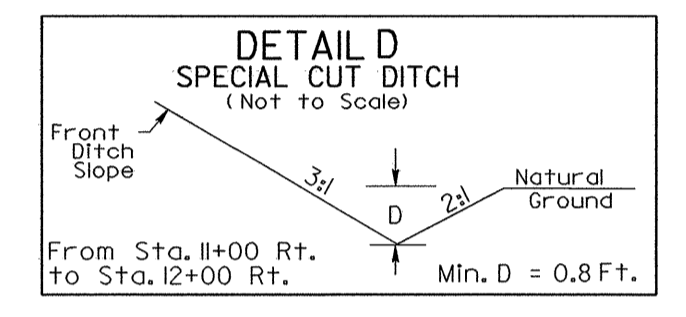
★ PROPOSED SIGNAL



MATCHLINE SEE  
 SHEET 7 SECTION B  
 -Y3- STA 34+00.00

PROJECT REFERENCE NO.	SHEET NO.
37972	EC-10/CONST.06
RW SHEET NO.	
ROADWAY DESIGN ENGINEER	HYDRAULICS ENGINEER

48 x 24 x 3  
1.5 inch Skimmer  
with 1 inch  
Orifice Diameter  
16 ft. weir  
ID 6.1F

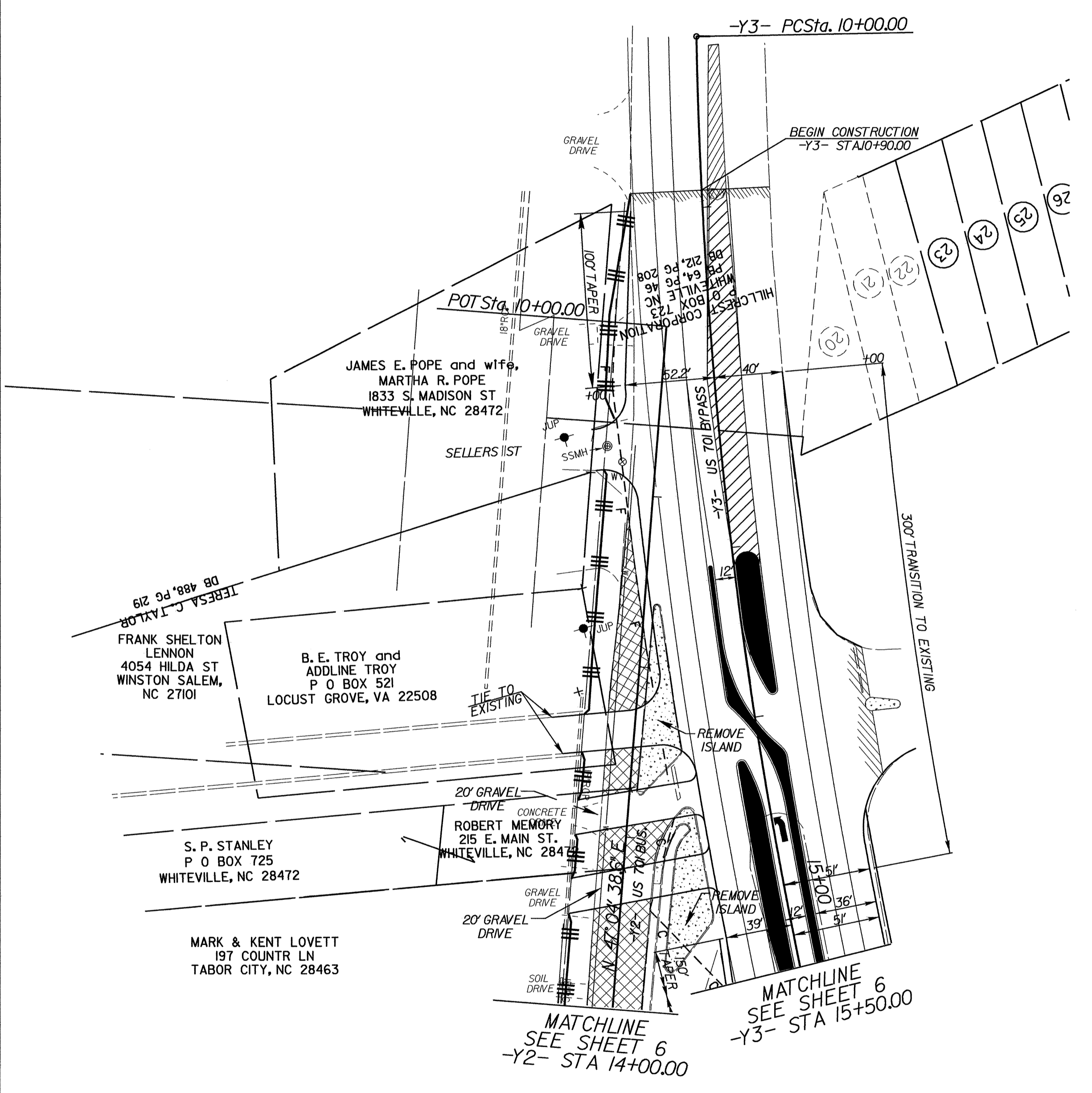


REVISIONS

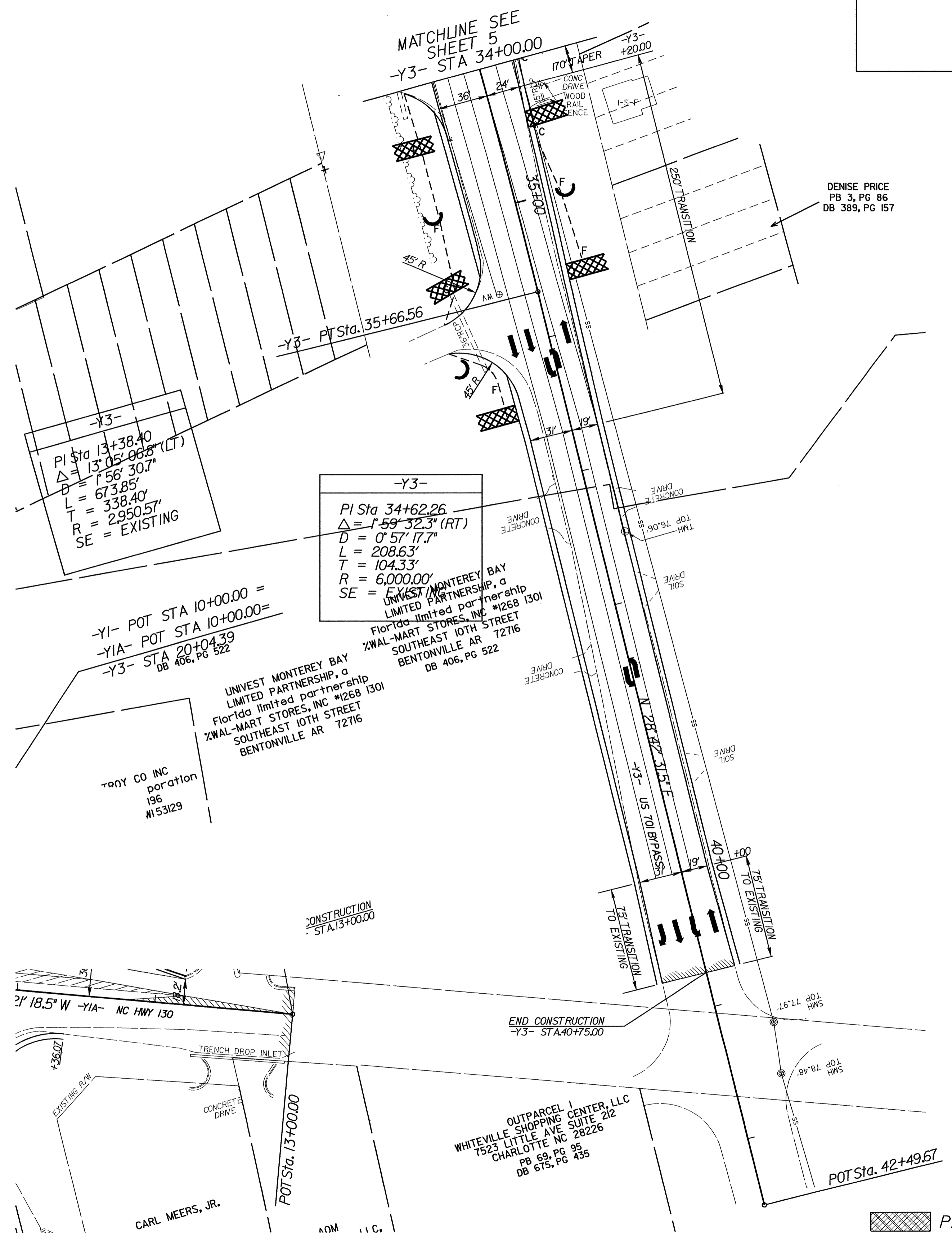
8/17/99  
16-SEP-2008 08:41  
d:\vme-37972\37972.ec\10\whiteville\ec\37972\_erosion control.plm\37972.ec.s10.dgn  
AT: [unreadable]

PROJECT REFERENCE NO.	SHEET NO.
37972	EC-II/CONST.07
RW SHEET NO.	
ROADWAY DESIGN ENGINEER	HYDRAULICS ENGINEER

# SECTION A



# SECTION B



DENISE PRICE  
PB 3, PG 86  
DB 389, PG 157

PAVEMENT REMOVAL

REVISIONS

8/17/99  
16-SEP-2009 08:42  
d:\ma\_37972\37972.ec\37972.ec.s11.dgn  
c:\pelson\_81\REN221415