

09/08/09

T.I.P. NO.	SHEET NO.
B-4080	UO-1

STATE OF NORTH CAROLINA  
DIVISION OF HIGHWAYS

**UTILITY BY OTHERS PLANS  
COLUMBUS COUNTY**

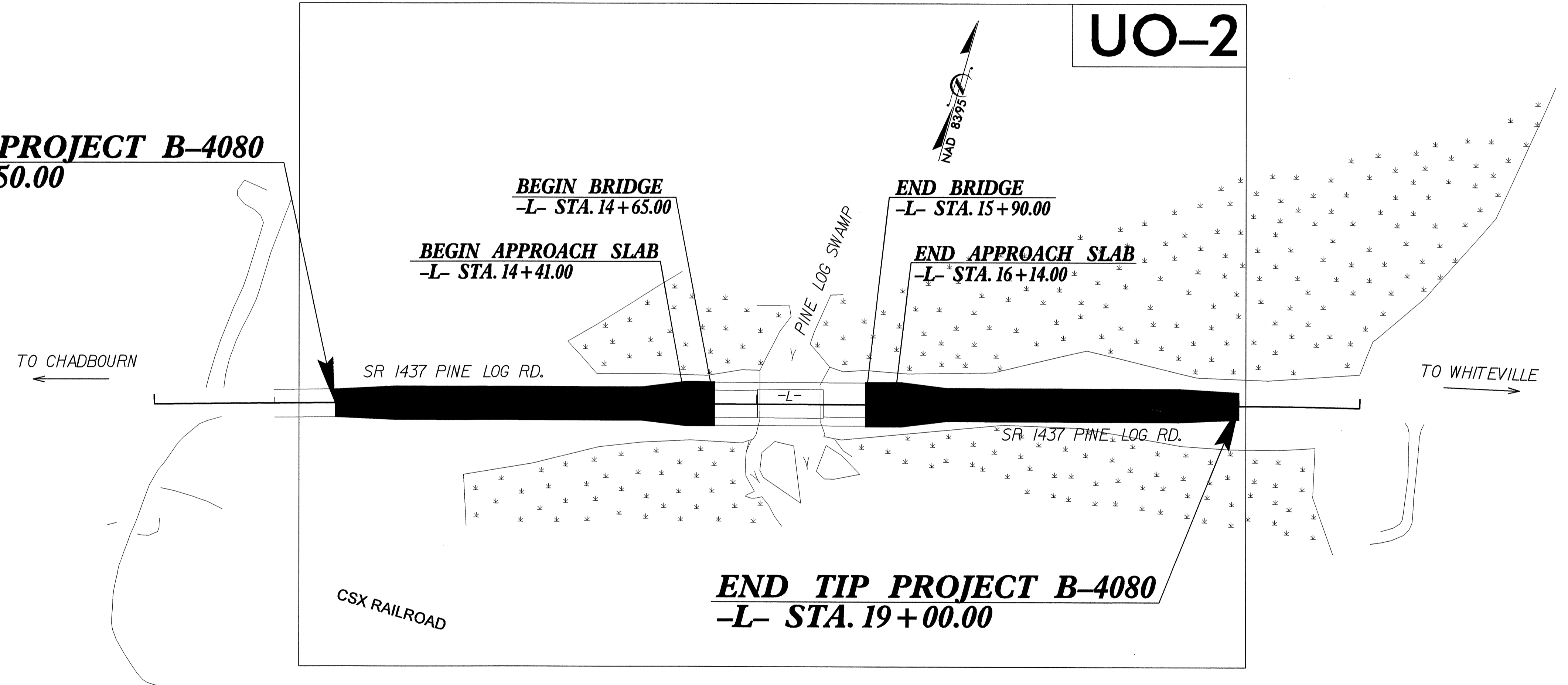
LOCATION: BRIDGE NO. 148 OVER PINE LOG SWAMP ON SR 1347

TYPE OF WORK: UTILITY BY OTHERS

TIP PROJECT: B-4080

CONTRACT: C201970

**BEGIN TIP PROJECT B-4080**  
**-L- STA. 11+50.00**



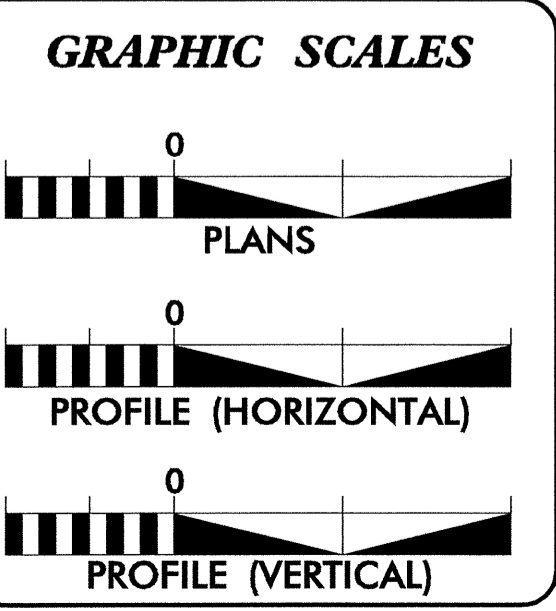
**BEGIN BRIDGE**  
**-L- STA. 14+65.00**

**END BRIDGE**  
**-L- STA. 15+90.00**

**BEGIN APPROACH SLAB**  
**-L- STA. 14+41.00**

**END APPROACH SLAB**  
**-L- STA. 16+14.00**

**END TIP PROJECT B-4080**  
**-L- STA. 19+00.00**

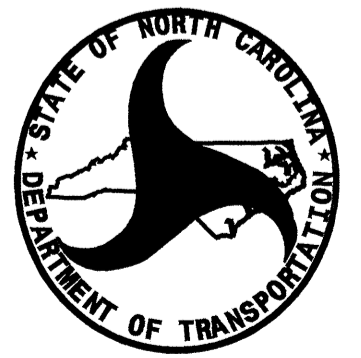


**INDEX OF SHEETS**

SHEET NO.	DESCRIPTION
UO-1	TITLE SHEET
UO-2	UTILITY BY OTHERS PLAN SHEET

**UTILITY OWNERS ON PROJECT**

(1) EMBARQ
------------



PREPARED IN THE OFFICE OF:  
**DIVISION OF HIGHWAYS  
DESIGN SERVICES  
UTILITY SECTION**

1591 MAIL SERVICES CENTER  
RALEIGH, NC 27699-1591  
PHONE (919) 250-4128  
FAX (919) 250-4119

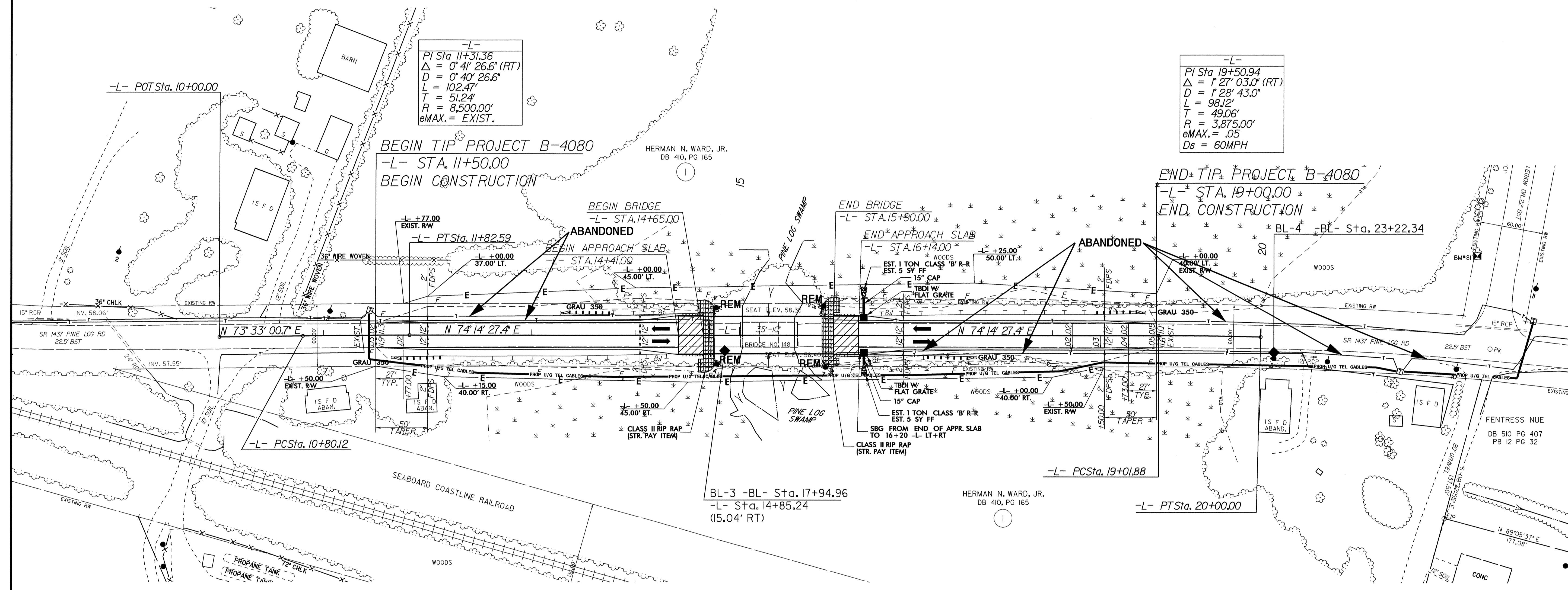
**Roger Worthington, P.E.** UTILITIES SECTION ENGINEER  
**R. B. WILKINS, P.E.** UTILITIES SQUAD LEADER PROJECT ENGINEER  
**MICHAEL R. BRIGHT** UTILITIES PROJECT DESIGNER

I7-JUL-2008 10:18  
F:\Utilities\CDY\ut\proj\b-4080-ut\_title\_uo1\_psh.dgn  
\$\$\$\$\$USERNAME\$\$\$\$\$

UTILITIES BY OTHERS

NOTE:  
 ALL PROPOSED UTILITY WORK  
 SHOWN ON THIS SHEET WILL  
 BE DONE BY OTHERS

5/14/09  
 r:\utilities\chick\p\B-4080-ut\_4\_uo2\_psh.dgn  
 17-JUL-2008 10:08  
 r:\utilities\chick\p\B-4080-ut\_4\_uo2\_psh.dgn



-L-  
 PI Sta 11+31.36  
 $\Delta = 0^\circ 41' 26.6''$  (RT)  
 $D = 0^\circ 40' 26.6''$   
 $L = 102.47'$   
 $T = 51.24'$   
 $R = 8,500.00'$   
 $eMAX. = EXIST.$

-L-  
 PI Sta 19+50.94  
 $\Delta = 1^\circ 27' 03.0''$  (RT)  
 $D = 1^\circ 28' 43.0''$   
 $L = 98.12'$   
 $T = 49.06'$   
 $R = 3,875.00'$   
 $eMAX. = .05$   
 $Ds = 60MPH$

BEGIN TIP PROJECT B-4080  
 -L- STA. 11+50.00  
 BEGIN CONSTRUCTION

END TIP PROJECT B-4080  
 -L- STA. 19+00.00  
 END CONSTRUCTION

BEGIN BRIDGE  
 -L- STA. 14+65.00  
 ABANDONED

END BRIDGE  
 -L- STA. 15+90.00  
 END APPROACH SLAB  
 -L- STA. 16+40.00

BL-3 -BL- Sta. 17+94.96  
 -L- Sta. 14+85.24  
 (15.04' RT)

HERMAN N. WARD, JR.  
 DB 410, PG 165

FENTRESS NUE  
 DB 510 PG 407  
 PB 12 PG 32